



**MIDWEST SURVEYS**  
 LOGGING - PERFORATING - CONSULTING SERVICES  
 P.O. Box 68, Osawatomie, KS 66064  
 913 / 755 - 2128

**GAMMA RAY / NEUTRON / CCL**

File No. \_\_\_\_\_

Company **RJ Enterprises**

Well **Norman Unit No. 18-1**

Field **Davis / Bronson**

County **Allen** State **Kansas**

Location **169' FSL & 894' FFL**  
**SE-SW-SE-SE**

Other Services Perforate

Sec. 3 Twp. 24S Rge. 21E Elevation NA

Permanent Datum GL Log Measured From GL Drilling Measured From GL

Date **06-07-2013**

Run Number **One**

Depth Diller **702.0**

Depth Logger **696.2**

Bottom Logged Interval **695.2**

Top Log Interval **20.0**

Fluid Level **Full**

Type Fluid **Water**

Density / Viscosity **NA**

Salinity - PPM Cl **NA**

Max Recorded Temp **NA**

Estimated Cement Top **0.0**

Equipment No. **102** Location **Osawatomie**

Recorded By **Gary Wondisch**

Witnessed By **Jason Kent**

BORE-HOLE RECORD				CASING RECORD			
RUN No.	BIT FROM	TO	SIZE	WGT. #	FROM	TO	
One	9.875"	20.0	7.00"	17.0 #	0.0	20.0	
Two	5.625"	20.0	2.875"	6.5 #	0.0	696.4	

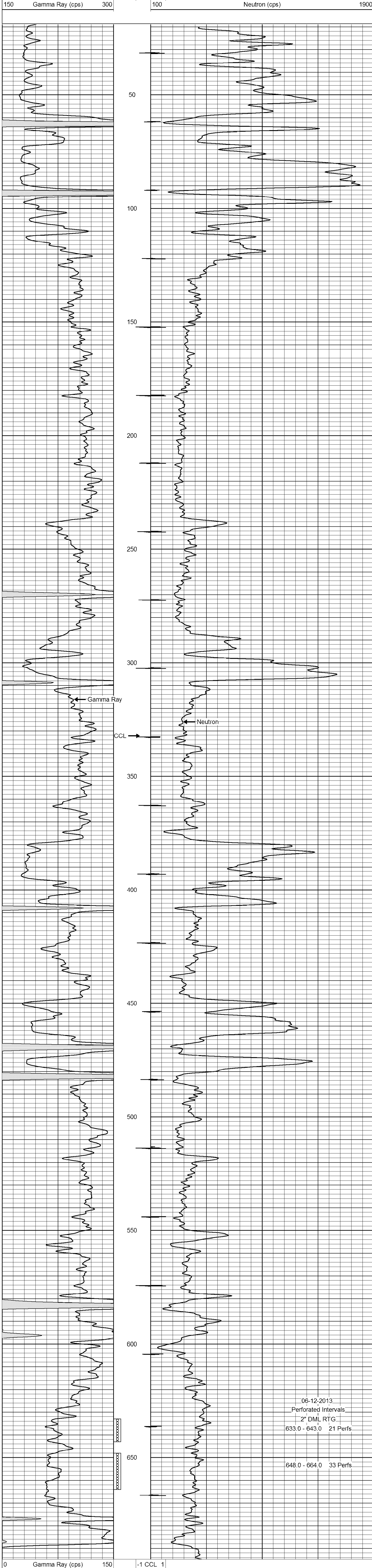
<<< Fold Here >>>

All interpretations are opinions based on inferences from electrical or other measurements and we cannot and do not guarantee the accuracy or correctness of any interpretation, and we shall not, except in the case of gross or willful negligence on our part, be liable or responsible for any loss, costs, damages, or expenses incurred or sustained by anyone resulting from any interpretation made by any of our officers, agents or employees. These interpretations are also subject to our general terms and conditions set out in our current Price Schedule.

Comments

Drilling Contractor :  
**RJ Enterprises**

Database File: **norman18i.db**  
 Dataset Pathname: **pass1**  
 Presentation Format: **gr-n-ccl**  
 Dataset Creation: **Fri Jun 07 11:45:40 2013 by Log SCH 111116**  
 Charted by: **Depth in Feet scaled 1:240**



06-12-2013  
 Perforated Intervals  
 2" DML RTG  
 633.0 - 643.0 21 Perfs  
 648.0 - 664.0 33 Perfs

BORE-HOLE RECORD				CASING RECORD			
RUN No.	BIT FROM	TO	SIZE	WGT. #	FROM	TO	
One	9.875"	20.0	7.00"	17.0 #	0.0	20.0	
Two	5.625"	20.0	2.875"	6.5 #	0.0	696.4	