



MIDWEST SURVEYS
 LOGGING - PERFORATING - CONSULTING SERVICES
 P.O. Box 68, Osawatomie, KS 66064
 913 / 765 - 2128

GAMMA RAY / NEUTRON / CCL

File No. _____

Company **RJ Enterprises**

Well **Norman Unit No. 12-1**

Field **Davis / Bronson**

County **Allen** State **Kansas**

Location **779' FSL & 137' FEL**

SE-NE-SW-SE

Sec. **3** Twp. **24S** Rge. **21E**

Permanent Datum **GL** Elevation **NA**

Log Measured From **GL**

Drilling Measured From **GL**

Date **06-07-2013**

Run Number **One**

Depth Diller **700.0**

Depth Logger **693.5**

Bottom Logged Interval **692.5**

Top Log Interval **20.0**

Fluid Level **Full**

Type Fluid **Water**

Density / Viscosity **NA**

Salinity - PPM/Cl **NA**

Max Recorded Temp **NA**

Estimated Cement Top **0.0**

Equipment No. **102** Location **Osawatomie**

Recorded By **Gary Windsch**

Witnessed By **Jason Kent**

BORE-HOLE RECORD				CASINGS RECORD			
RUN No.	BIT FROM	TO	SIZE	WGT.	FROM	TO	TO
One	9.875"	0.0	7.00"	17.0 #	0.0	20.0	20.0
Two	5.625"	20.0	2.875"	6.5 #	0.0	694.0	694.0

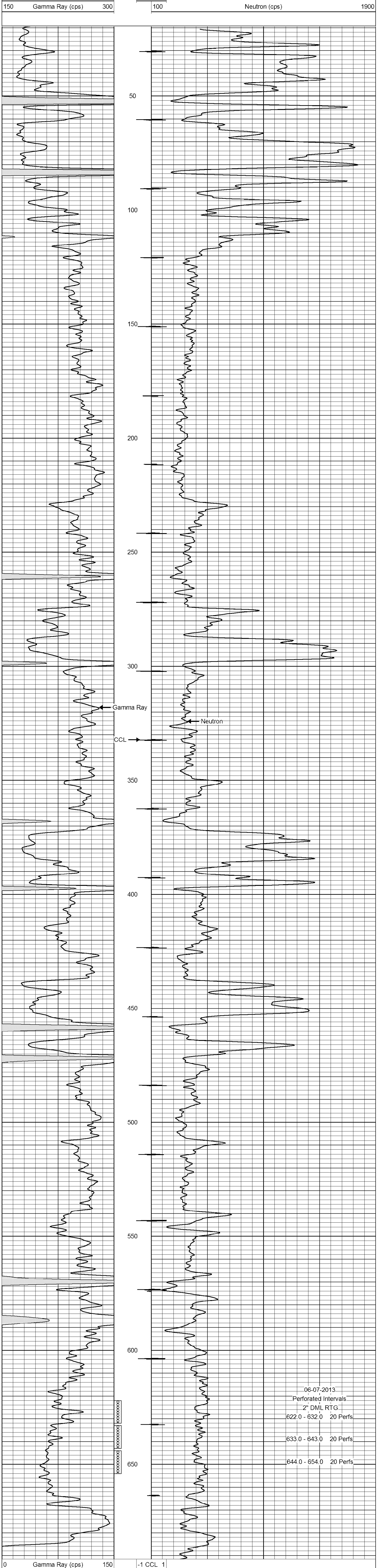
<<< Fold Here >>>

All interpretations are opinions based on inferences from electrical or other measurements and we cannot and do not guarantee the accuracy or correctness of any interpretation, and we shall not, except in the case of gross or willful negligence on our part, be liable or responsible for any loss, costs, damages, or expenses incurred or sustained by anyone resulting from any interpretation made by any of our officers, agents or employees. These interpretations are also subject to our general terms and conditions set out in our current Price Schedule.

Comments

Drilling Contractor :
RJ Enterprises

Database File: norman12i.db
 Dataset Pathname: pass1
 Presentation Format: gr-n-ccl
 Dataset Creation: Fri Jun 07 08:39:42 2013 by Log SCH 111116
 Charted by: Depth in Feet scaled 1:240



BORE-HOLE RECORD				CASINGS RECORD			
RUN No.	BIT FROM	TO	SIZE	WGT.	FROM	TO	TO
One	9.875"	0.0	7.00"	17.0 #	0.0	20.0	20.0
Two	5.625"	20.0	2.875"	6.5 #	0.0	694.0	694.0