



**MIDWEST SURVEYS**  
 LOGGING - PERFORATING - CONSULTING SERVICES  
 P.O. Box 68, Osawatomie, KS 66064  
 913 / 755 - 2128

**GAMMA RAY / NEUTRON / CCL**

File No. \_\_\_\_\_

Company **RJ Enterprises**  
 Well **Norman Unit No. 10-1**  
 Field **Davis / Bronson**  
 County **Allen** State **Kansas**

Location **1359' FSL & 820' FEL**  
**SE-SW-NE-SE**

Sec. **3** Twp. **24S** Rge. **21E**  
 Permanent Datum **GL** Elevation **NA**  
 Log Measured From **GL** K.B. NA  
 Drilling Measured From **GL** D.F. NA  
 G.L. NA

Date	06-12-2013
Run Number	One
Depth Diller	707.0
Depth Logger	695.0
Bottom Logged Interval	694.0
Top Log Interval	20.0
Fluid Level	Full
Type Fluid	Water
Density / Viscosity	NA
Salinity - PPM Cl	NA
Max Recorded Temp	NA
Estimated Cement Top	0.0
Equipment No.	102
Location	Osawatomie
Recorded By	Gary Windisch
Witnessed By	Jason Kent

BORE-HOLE RECORD		CASING RECORD	
RUN No.	BIT FROM TO	SIZE FROM TO	WGT. FROM TO
One	9.875" 0.0 20.0	7.00" 7.00" 0.0	17.0 # 0.0
Two	5.625" 20.0 707.0	2.875" 6.5 # 0.0	0.0 695.0

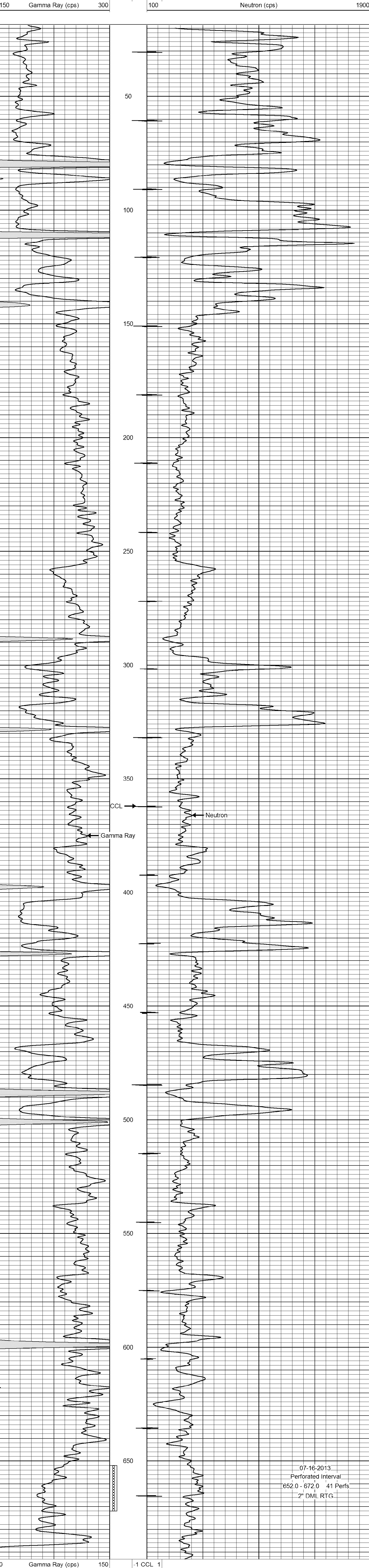
<<< Fold Here >>>

All interpretations are opinions based on inferences from electrical or other measurements and we cannot and do not guarantee the accuracy or correctness of any interpretation, and we shall not, except in the case of gross or willful negligence on our part, be liable or responsible for any loss, costs, damages, or expenses incurred or sustained by anyone resulting from any interpretation made by any of our officers, agents or employees. These interpretations are also subject to our general terms and conditions set out in our current Price Schedule.

**Comments**

Drilling Contractor :  
**RJ Enterprises**

Database File: norman10i.db  
 Dataset Pathname: pass1  
 Presentation Format: gr-n-ccl  
 Dataset Creation: Wed Jun 12 15:00:44 2013 by Log SCH 111116  
 Charted by: Depth in Feet scaled 1:240



07-16-2013  
 Perforated Interval  
 652.0 - 672.0 41 Perfs  
 2" DML RTG