

MIDWEST SURVEYS
 LOGGING - PERFORATING - CONSULTING SERVICES
 P. O. Box 88, Osawatomie, KS 68084
 913 / 755 - 2128

GAMMA RAY / NEUTRON / CCL

File No. _____

Company **Colt Energy, Inc**

Well **Lauber No.- 32**

Field **Big Sandy**

County **Woodson**

State **Kansas**

Location **165 FNL & 1930 FEL**

Other Services **NW-NE-NW-NE**

Perforate _____

Sec. 23 Top. 28S Ege. 14E

Permanent Datum _____

Log Measured From _____

Drilling Measured From _____

Date _____

Run Number _____

Depth Logger _____

Bottom Logged Interval _____

Top Log Interval _____

Fluid Level _____

Type Fluid _____

Density / Viscosity _____

Salinity - PPM Cl _____

Max. Recorded Temp _____

Estimated Cement Top _____

Equipment No. _____

Location _____

Recorded By _____

Witnessed By _____

Revised By _____

Checked By _____

Approved By _____

BOREHOLE RECORD	TO	SIZE	WGT	FROM	TO
One	42.0	8.33"	24.0#	0.0	42.0
Two	42.0	4.57"	10.5#	0.0	1350.95
					1345.95

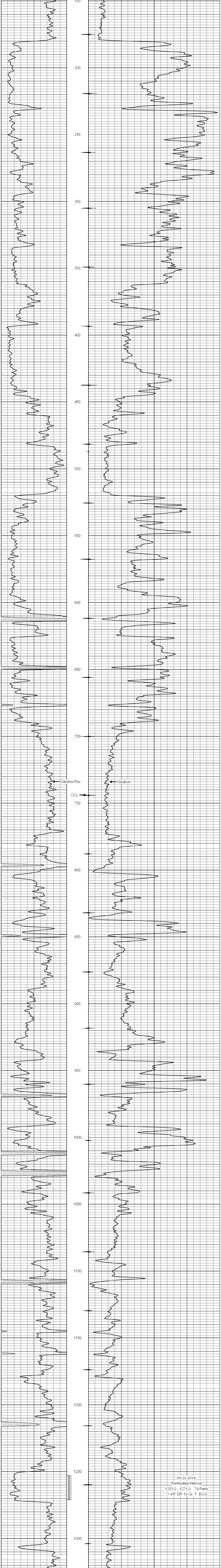
<<< Fold Here >>>

All interpretations are opinions based on inferences from electrical or other measurements and we cannot and do not guarantee the accuracy or correctness of any interpretation, and we shall not, except in the case of gross or willful negligence on our part, be liable or responsible for any loss, costs, damages, or expenses incurred or sustained by anyone resulting from any interpretation made by any of our officers, agents or employees. These interpretations are also subject to our general terms and conditions set out in our current Price Schedule.

Comments

Drilling Contractor :
Bar Drilling, LLC

Database File: lauber 32.db
 Dataset Pathname: pass1
 Presentation Format: gr-r-ccl
 Dataset Creation: Tue Sep 23 12:18:02 2014 by Log SCH 1111116
 Charted by: Depth in Feet scaled 1:240



0 Gamma Ray (cps) 150
 150 Gamma Ray (cps) 300
 -1 CCL 1
 10 Neutron (cps) 2100

09-23-2014
 Perforated Interval
 1253.0 - 1271.0 74 Perfs
 3 3/8" DP 19 Gr. T. ECC