



Pioneer Energy Services

Dual Induction Log

API No. 15-159-22,740-00-00
Company Mike Kelso Oil, Inc.
Well Warner #2
Field Chase-Silica
County Rice **State** Kansas
Location SE NE NW NW
 4785' FSL & 4033' FEL
Sec: 15 **Twp:** 20S **Rge:** 10W
Other Services
 CNL/CDL
 MEL

Permanent Datum Ground Level Elevation 1828
Log Measured From Kelly Bushing 8 Ft. Above Perm. Datum
Drilling Measured From Kelly Bushing
Elevation
 K.B. 1836
 D.F. 1828
 G.L. 1828

Date	6/3/2013
Run Number	One
Depth Driller	3490
Depth Logger	3488
Bottom Logged Interval	3487
Top Log Interval	250
Casing Driller	8.625 @ 263
Casing Logger	262
Bit Size	7.875
Type Fluid in Hole	Chemical
Salinity, ppm CL	5500
Density / Viscosity	9.1 56
pH / Fluid Loss	10.5 8.2
Source of Sample	Flowline
Rm @ Meas. Temp	0.50 @ 80
Rmf @ Meas. Temp	0.38 @ 80
Rmc @ Meas. Temp	0.68 @ 80
Source of Rmf / Rmc	Charts
Rm @ BHT	0.36 @ 111
Operating Rig Time	4 Hours
Max Rec. Temp. F	111
Equipment Number	10
Location	Hays
Recorded By	D. Kerr
Witnessed By	Jeff Lawler
	Steve Reed

<<< Fold Here >>>

All interpretations are opinions based on inferences from electrical or other measurements and we cannot and do not guarantee the accuracy or correctness of any interpretation, and we shall not, except in the case of gross or willful negligence on our part, be liable or responsible for any loss, costs, damages, or expenses incurred or sustained by anyone resulting from any interpretation made by any of our officers, agents or employees. These interpretations are also subject to our general terms and conditions set out in our current Price Schedule.

Comments

Thank you for using Log-Tech, Inc.
 (785) 625-3858
 Ellinwood KS, East to the Raymond Black Top,
 2 South to O RD, 1/4 East, South Into

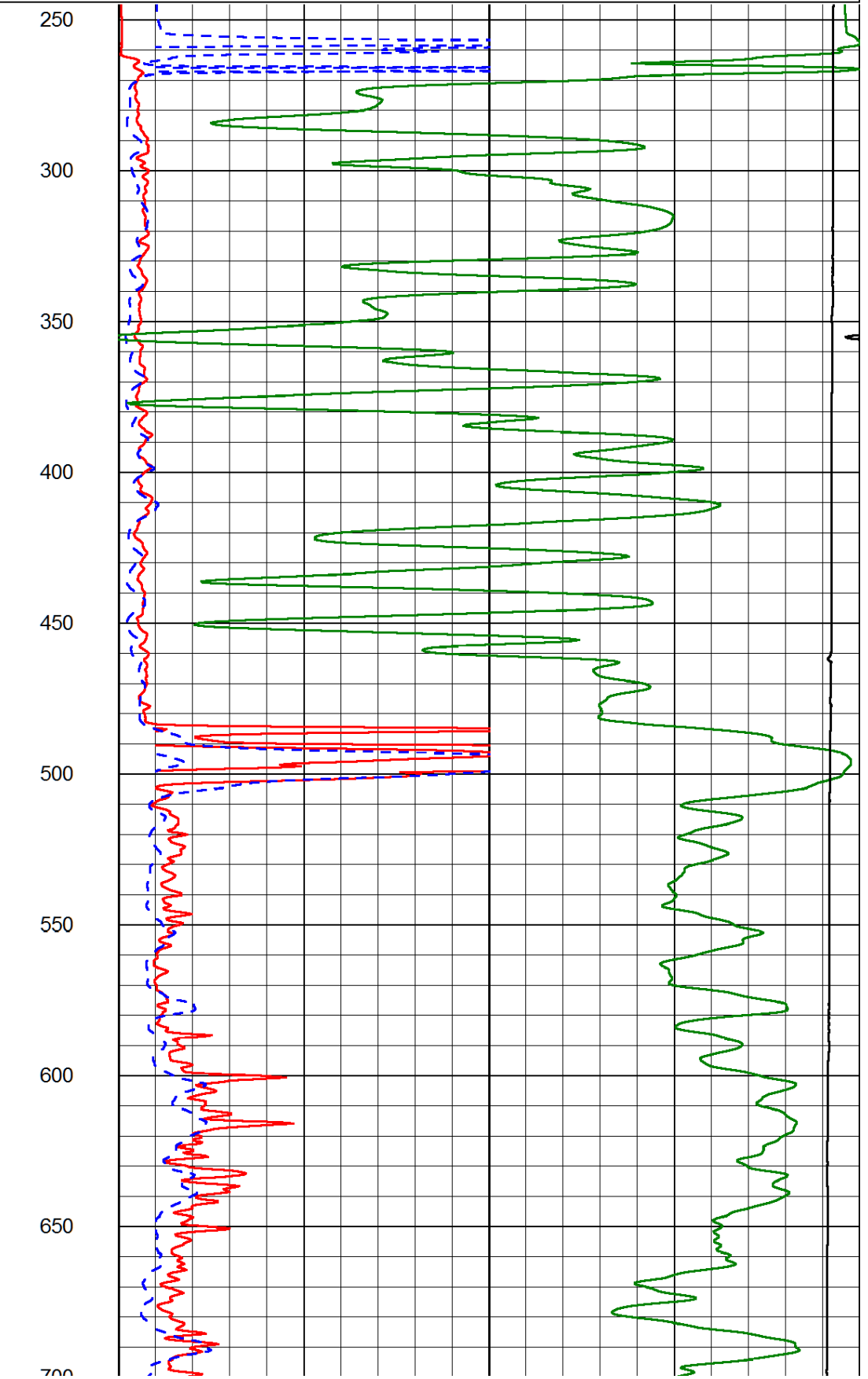
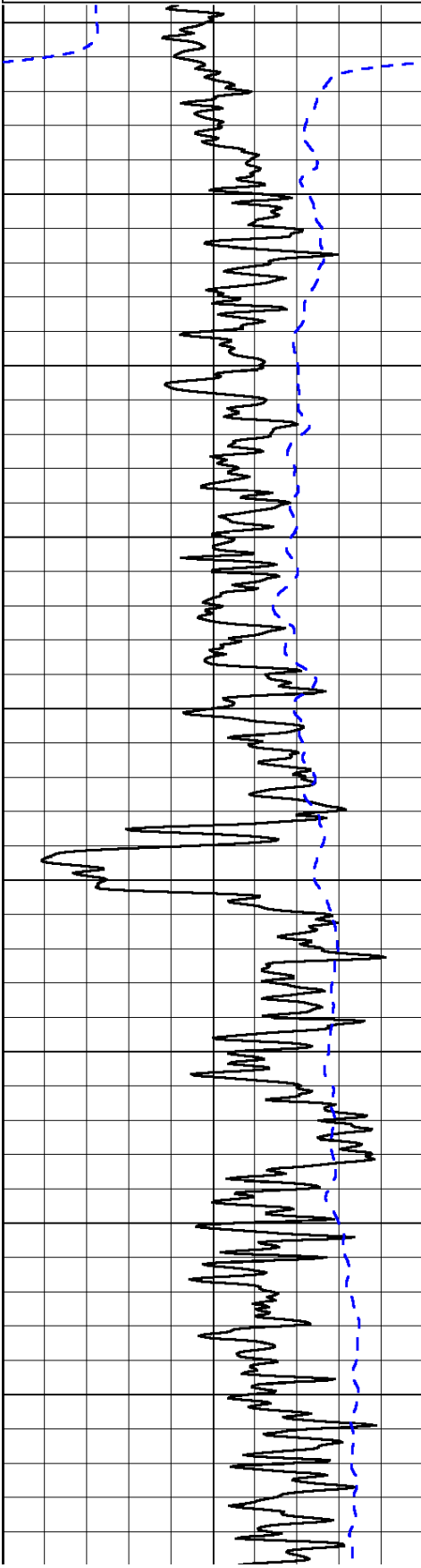
Database File: mikelsohd.db
 Dataset Pathname: DIL/mkstc
 Presentation Format: dil2in
 Dataset Creation: Mon Jun 03 21:37:07 2013
 Charted by: Depth in Feet scaled 1:600

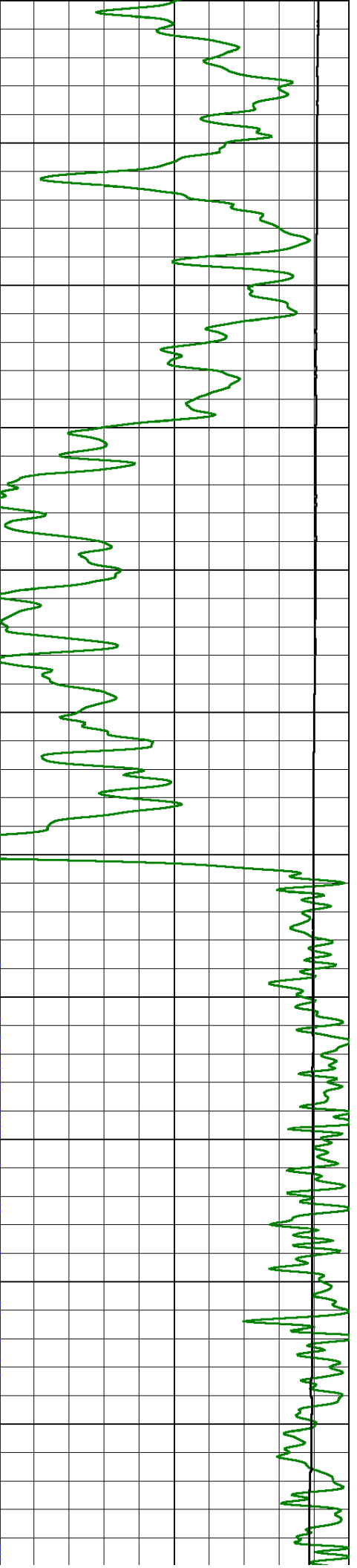
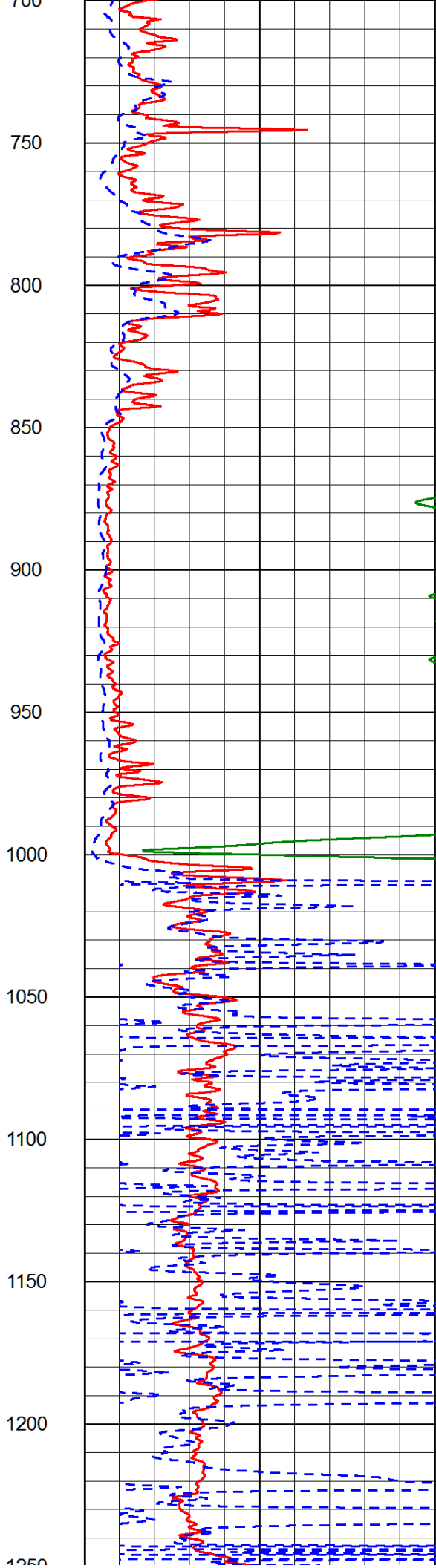
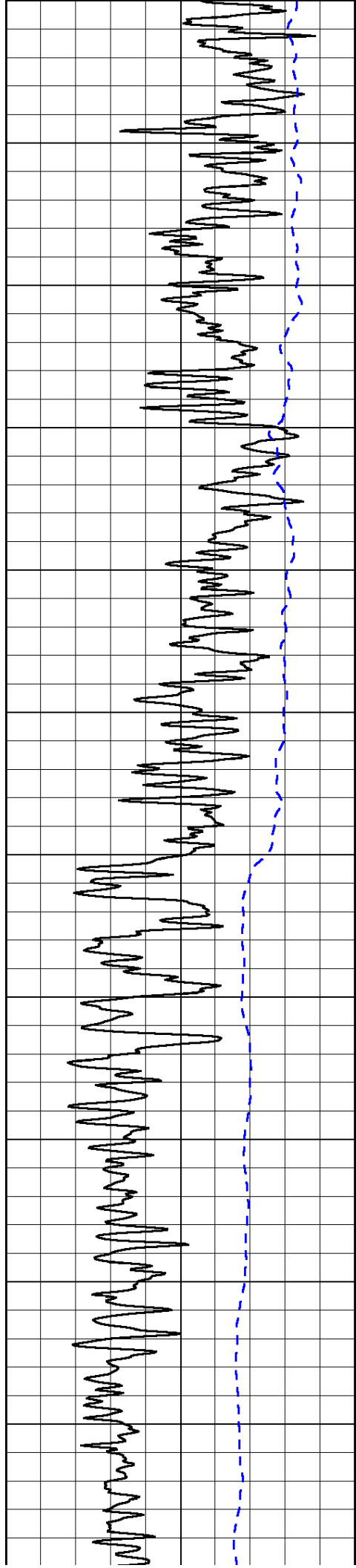
0	Gamma Ray (GAPI)	150
-200	SP (mV)	0

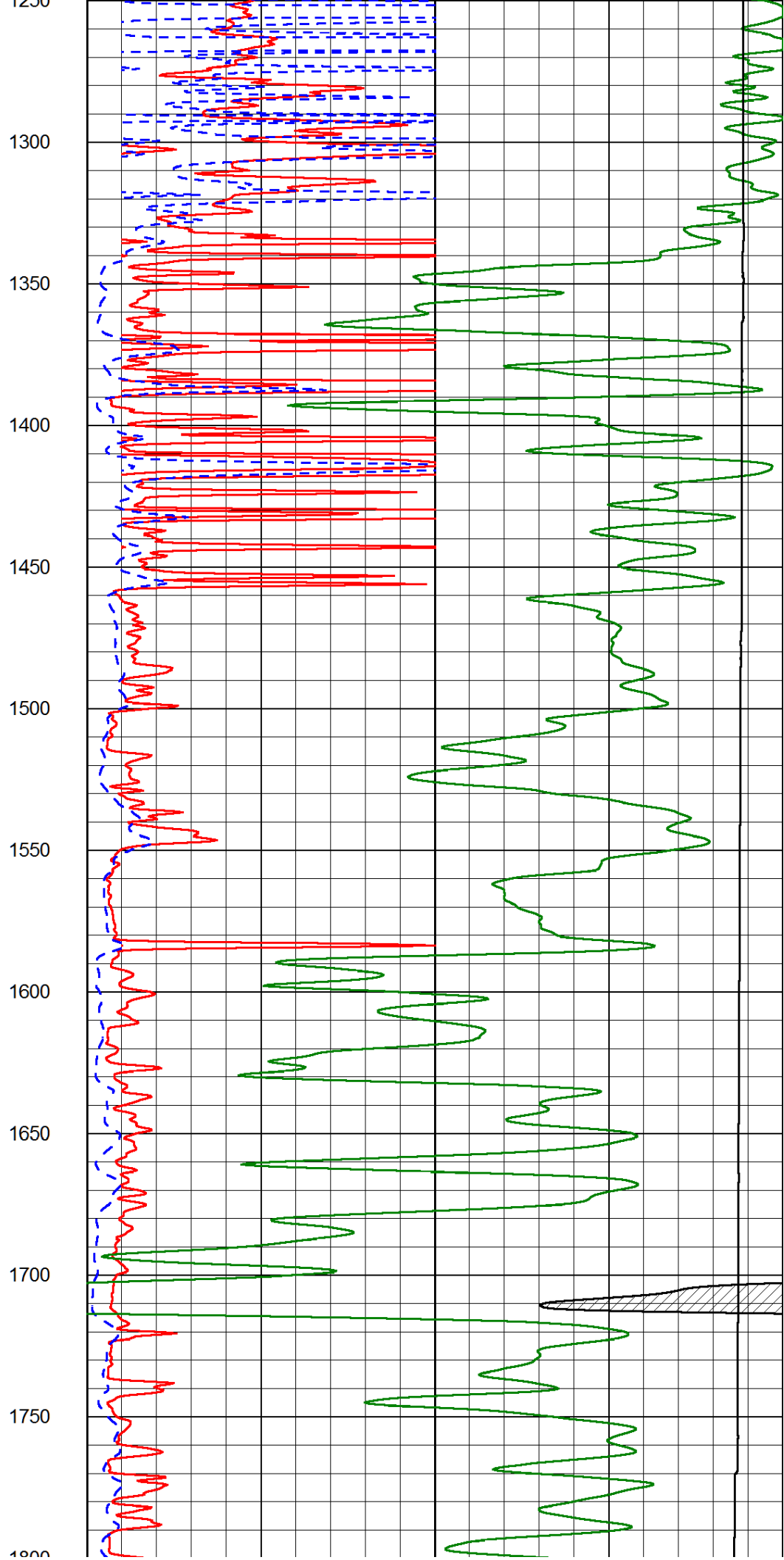
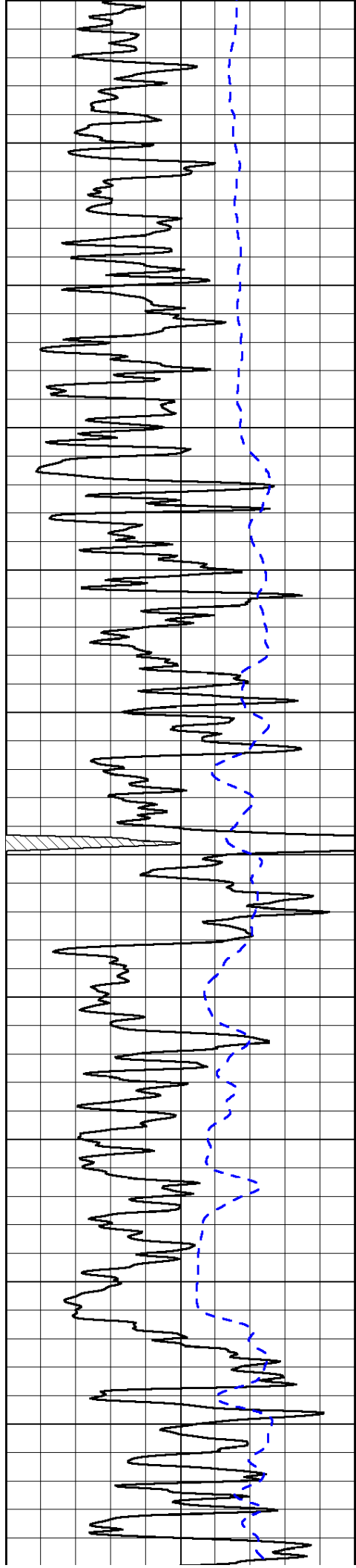
0	Shallow Resistivity (Ohm-m)	50
0	Deep Resistivity (Ohm-m)	50

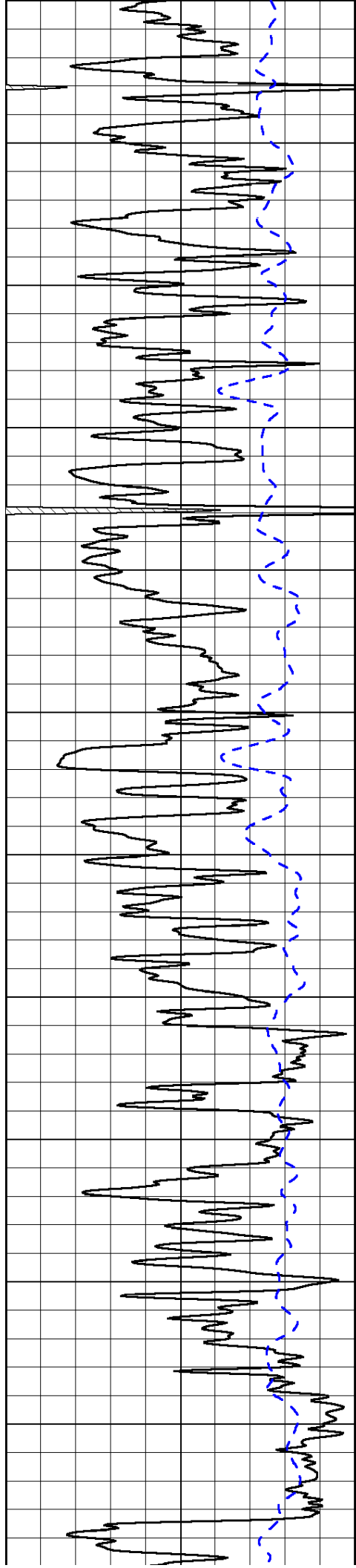
1000	Conductivity (Ohm-m)	0
15000	Line Tension (lb)	0

Shallow Resistivity		
50	(Ohm-m)	500
50 Deep Resistivity (Ohm-m) 500		

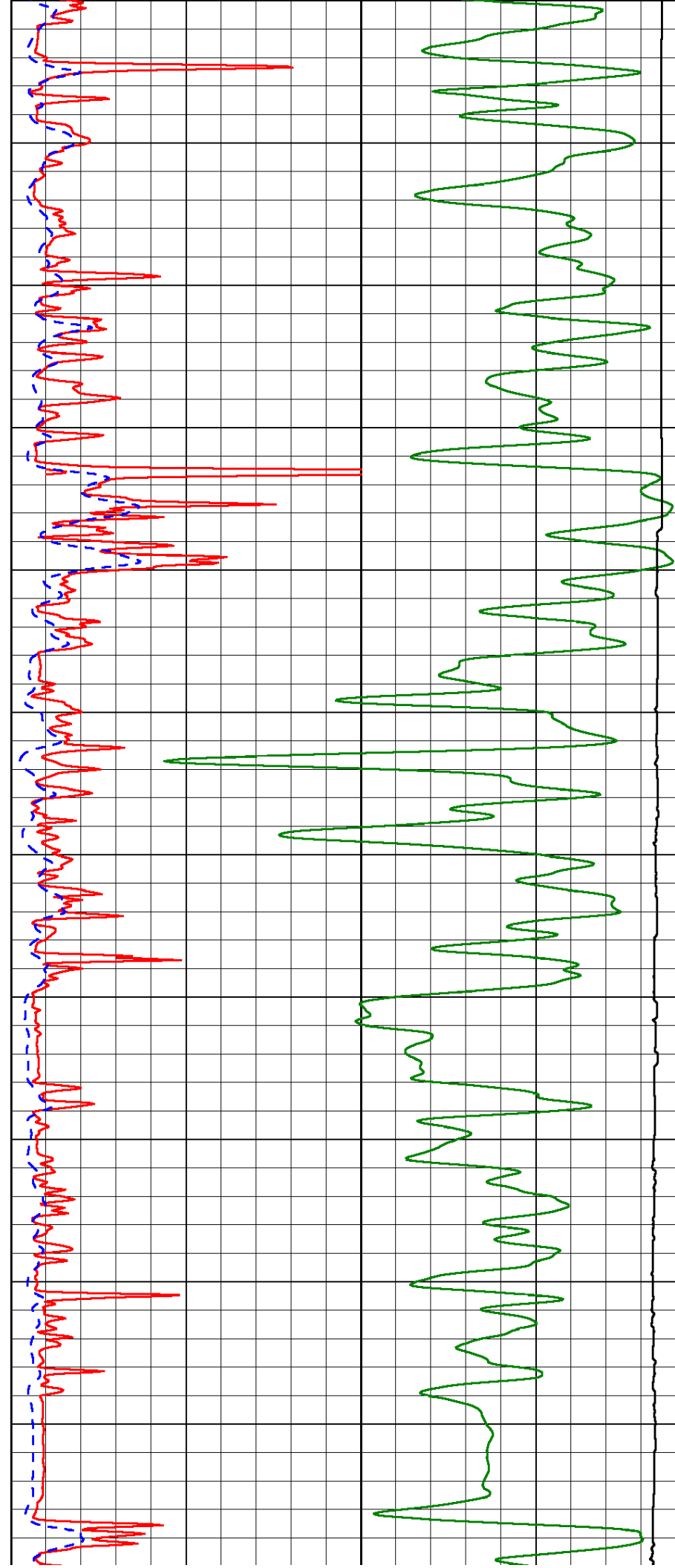


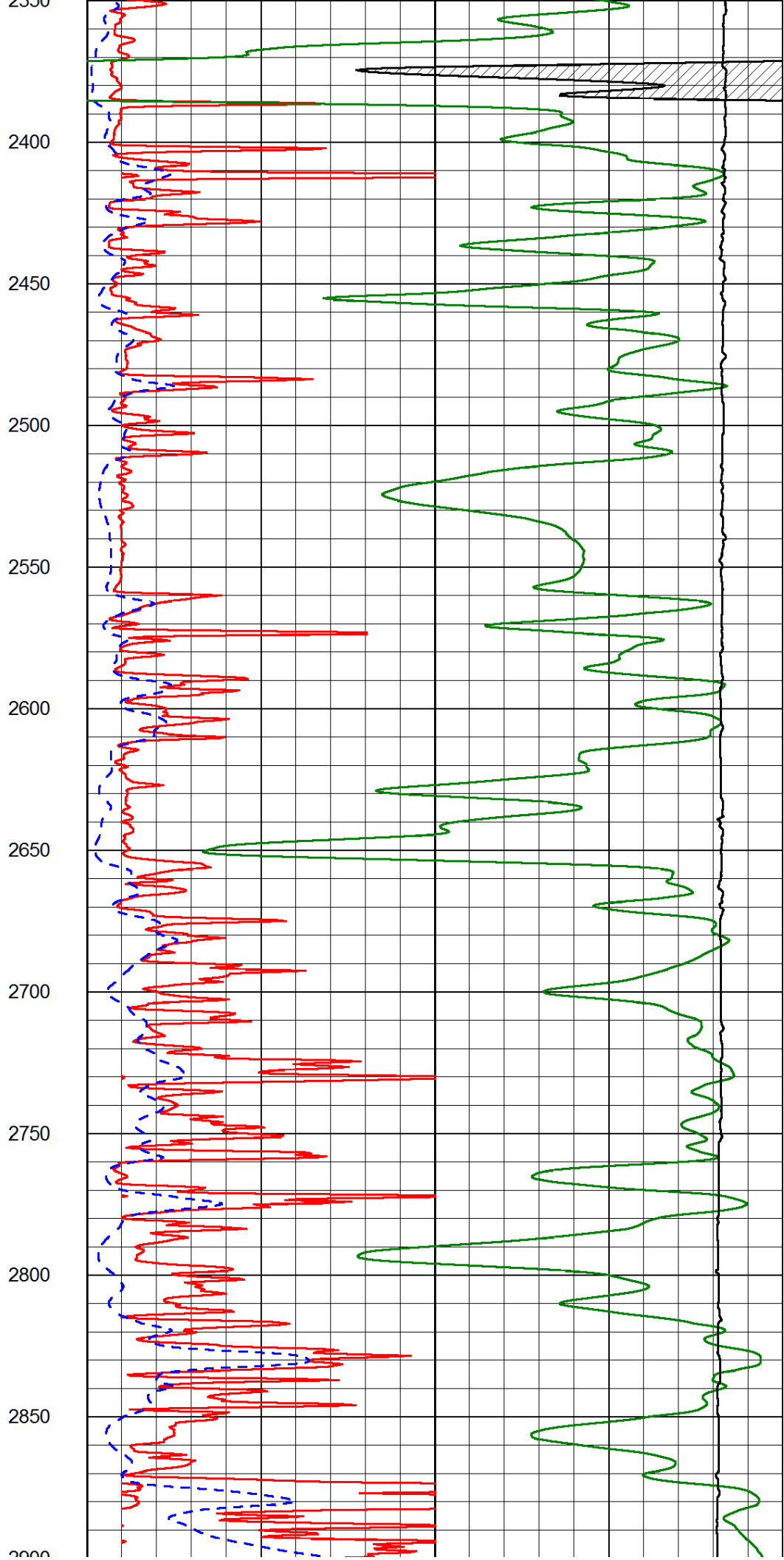
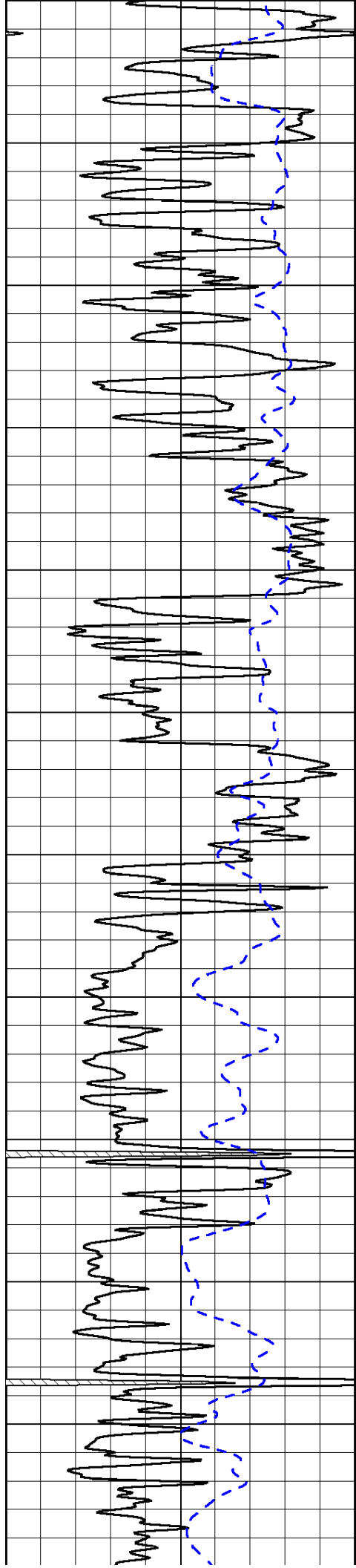


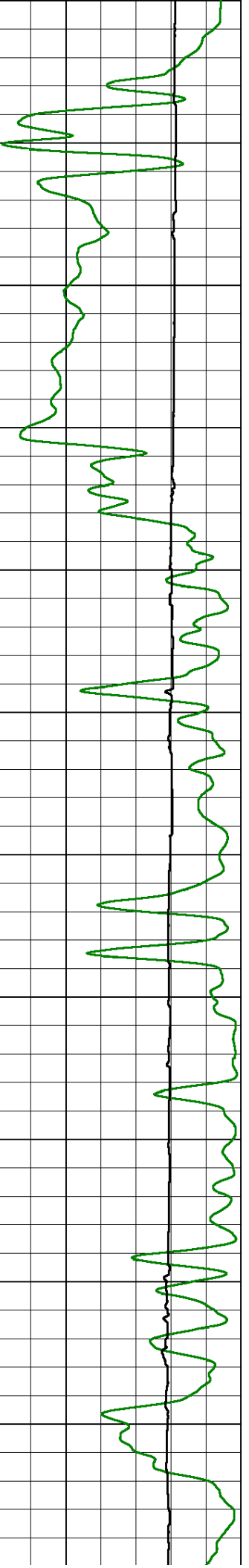
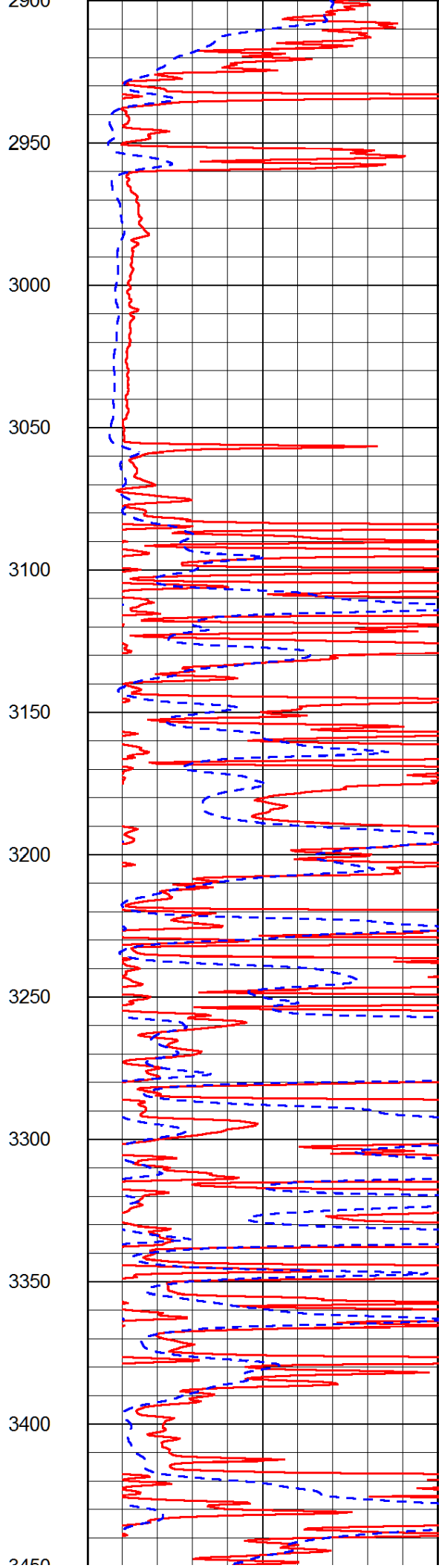
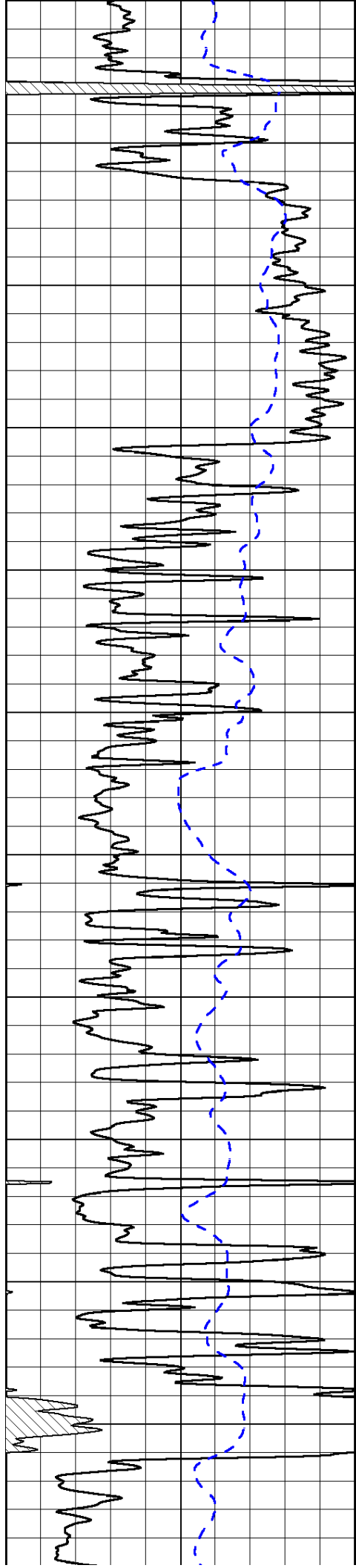


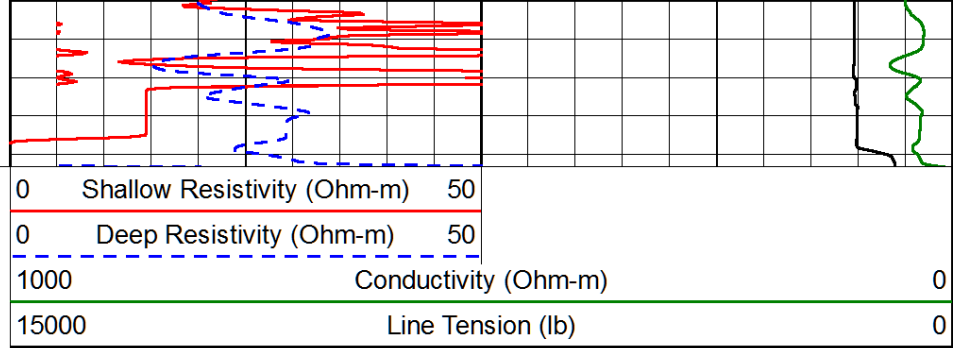
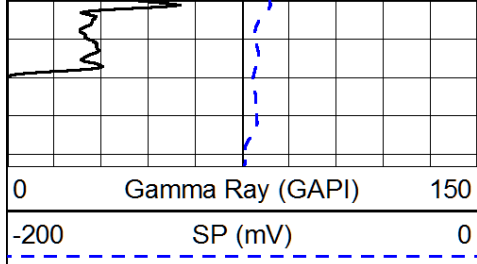


1800
1850
1900
1950
2000
2050
2100
2150
2200
2250
2300
2350



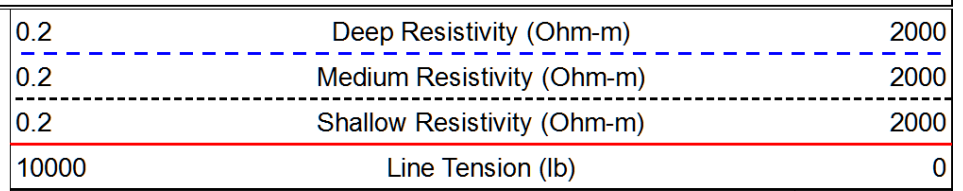
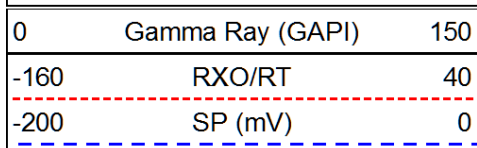




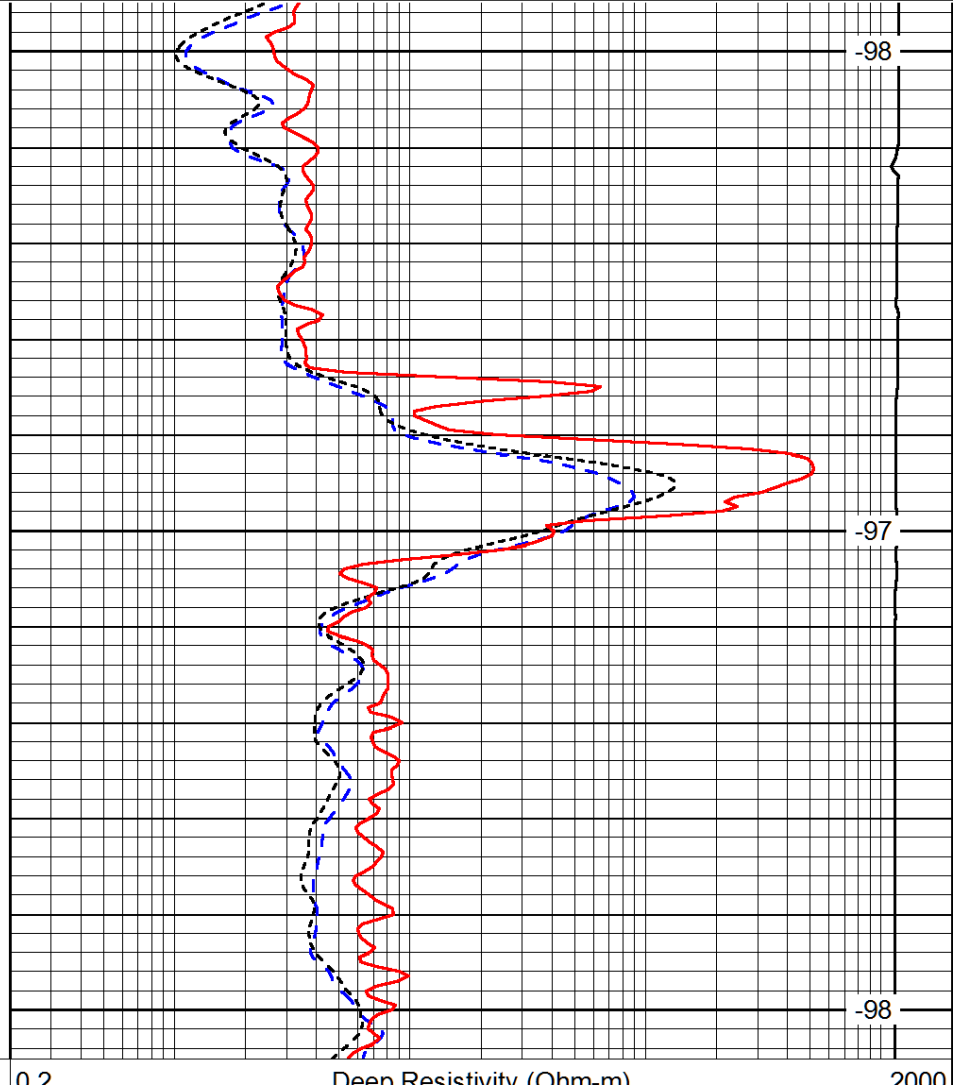
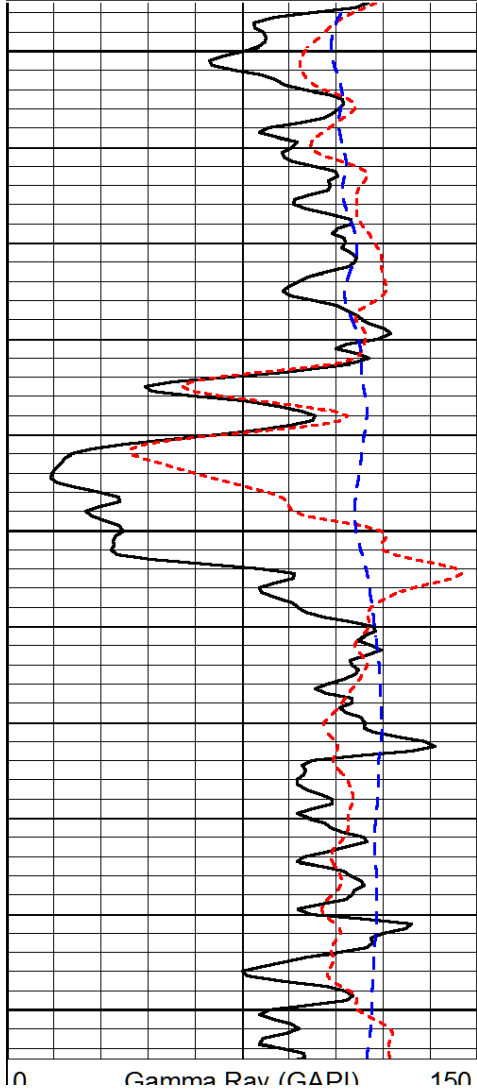


Shallow Resistivity		
50	(Ohm-m)	500
50	Deep Resistivity (Ohm-m)	500

Database File: mikelsohd.db
 Dataset Pathname: DIL/mkstk
 Presentation Format: dil
 Dataset Creation: Mon Jun 03 21:37:07 2013
 Charted by: Depth in Feet scaled 1:240



LSPD
(ft/min)



0	Gamma Ray (GAPI)	150
-160	RXO/RT	40
-200	SP (mV)	0

0.2	Deep Resistivity (Ohm-m)	2000
0.2	Medium Resistivity (Ohm-m)	2000
0.2	Shallow Resistivity (Ohm-m)	2000
10000	Line Tension (lb)	0

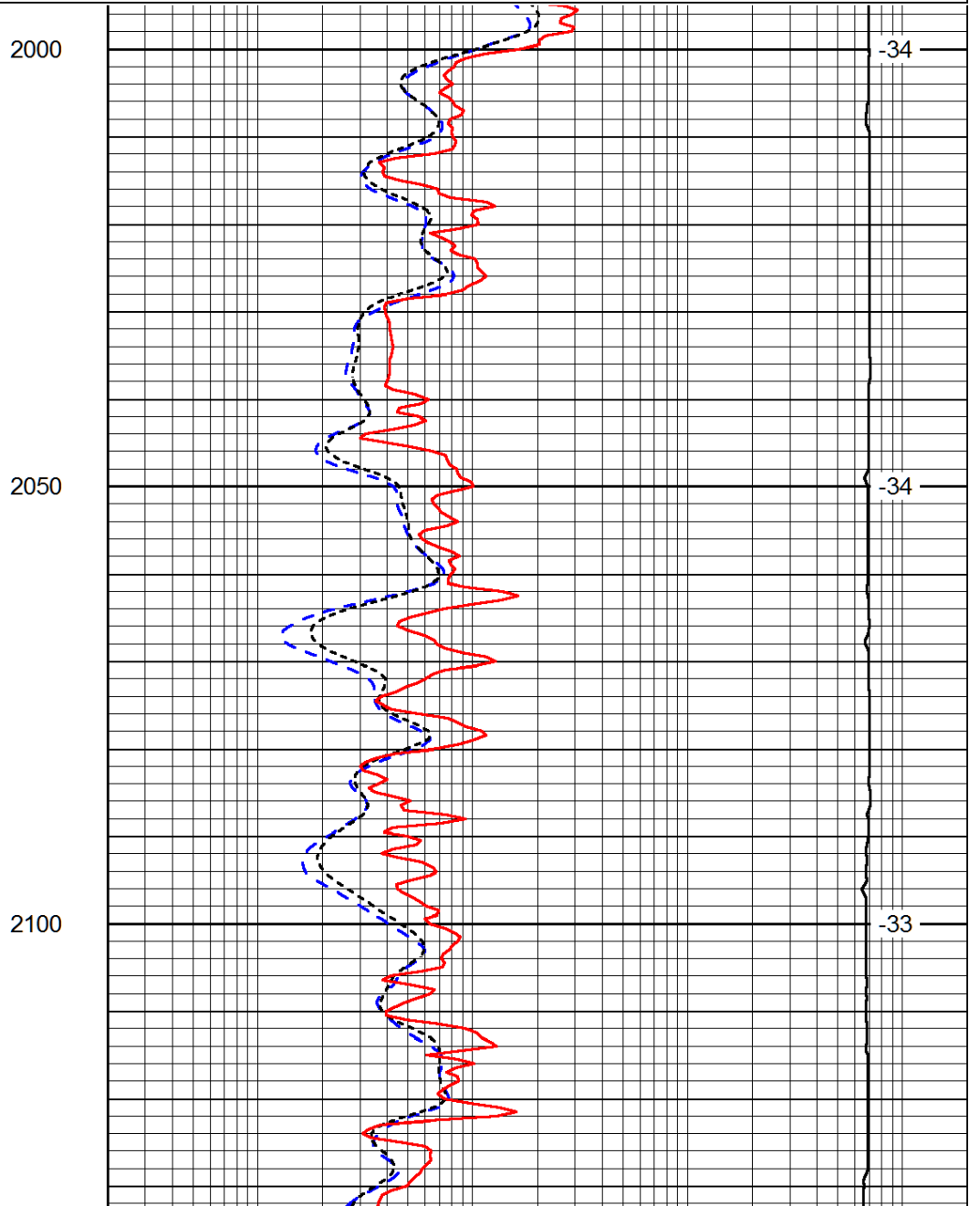
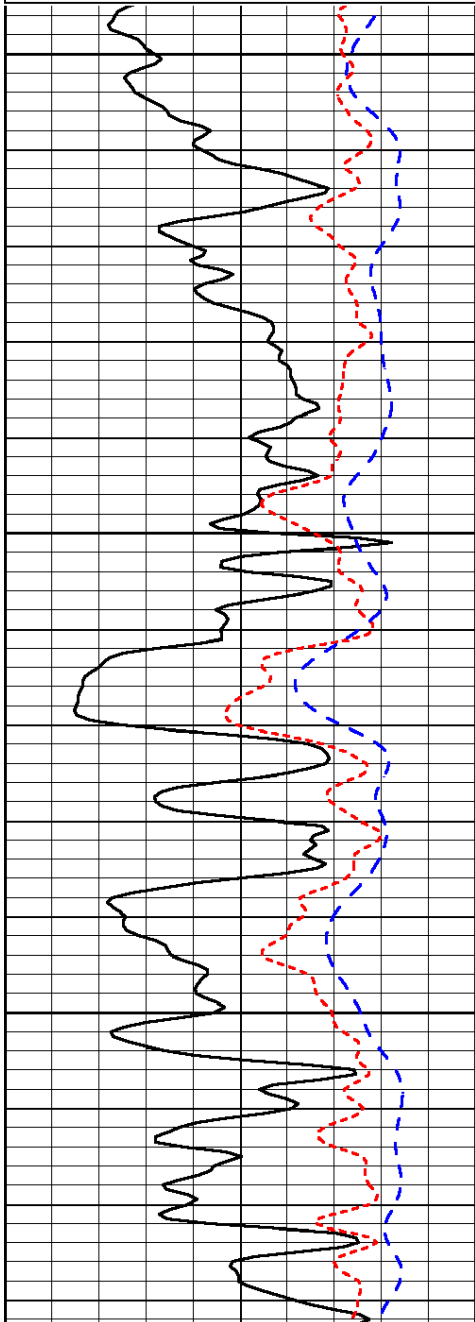
LSPD
(ft/min)

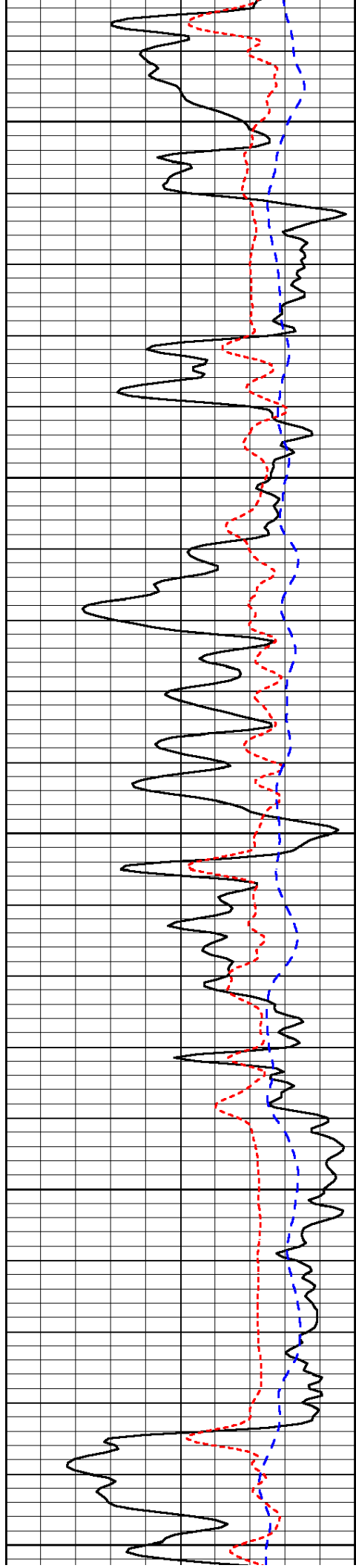
Database File: mikelsohd.db
 Dataset Pathname: DIL/mkstk
 Presentation Format: dil
 Dataset Creation: Mon Jun 03 21:37:07 2013
 Charted by: Depth in Feet scaled 1:240

0	Gamma Ray (GAPI)	150
-160	RXO/RT	40
-200	SP (mV)	0

0.2	Deep Resistivity (Ohm-m)	2000
0.2	Medium Resistivity (Ohm-m)	2000
0.2	Shallow Resistivity (Ohm-m)	2000
10000	Line Tension (lb)	0

LSPD
(ft/min)





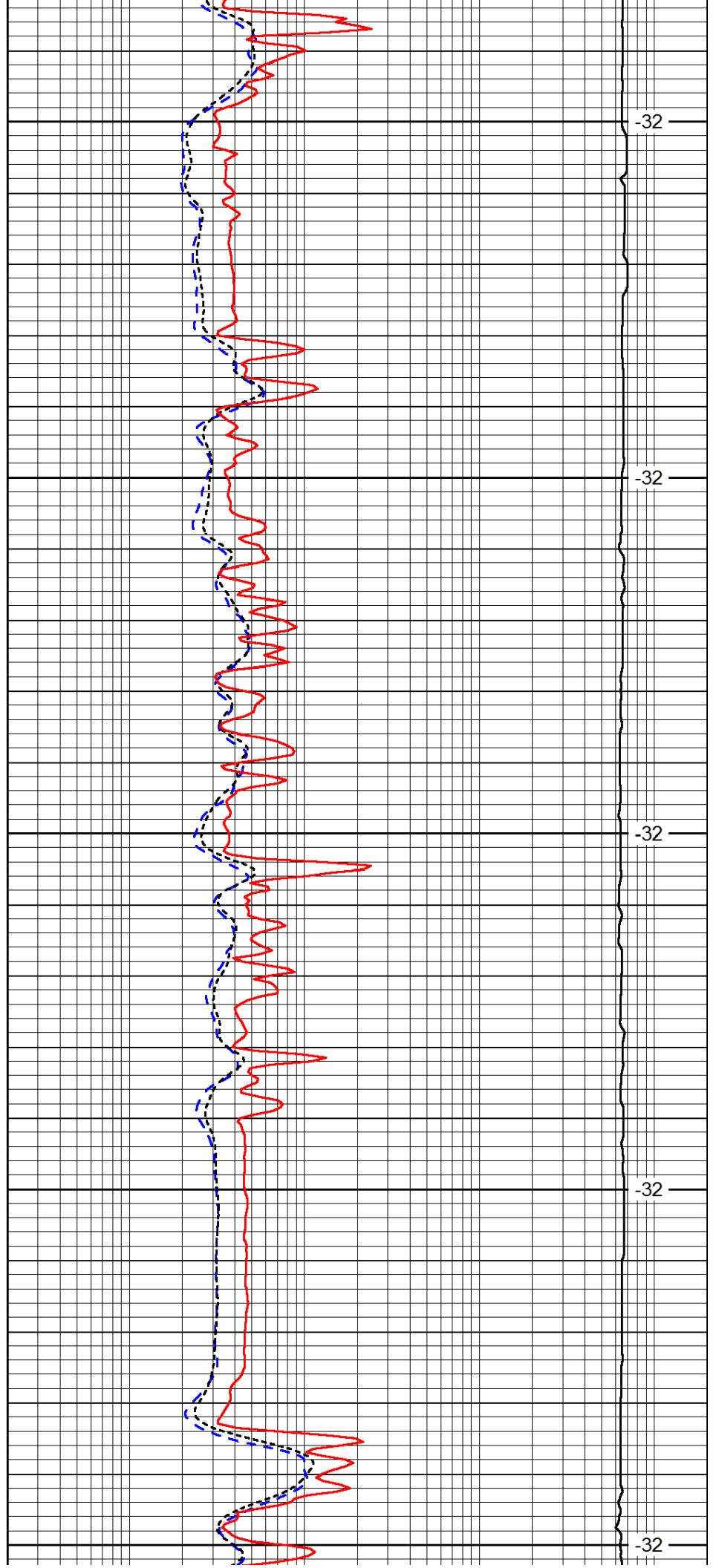
2150

2200

2250

2300

2350



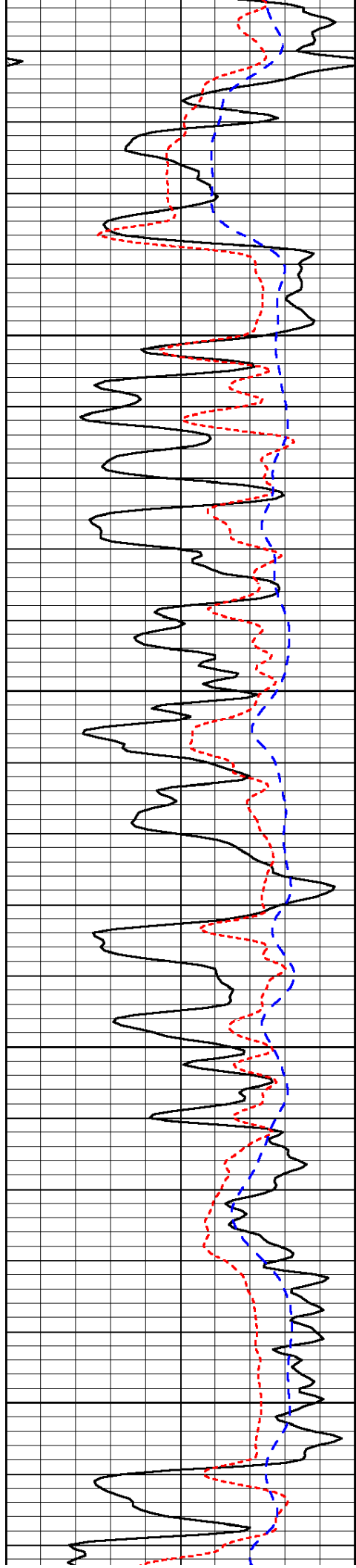
-32

-32

-32

-32

-32

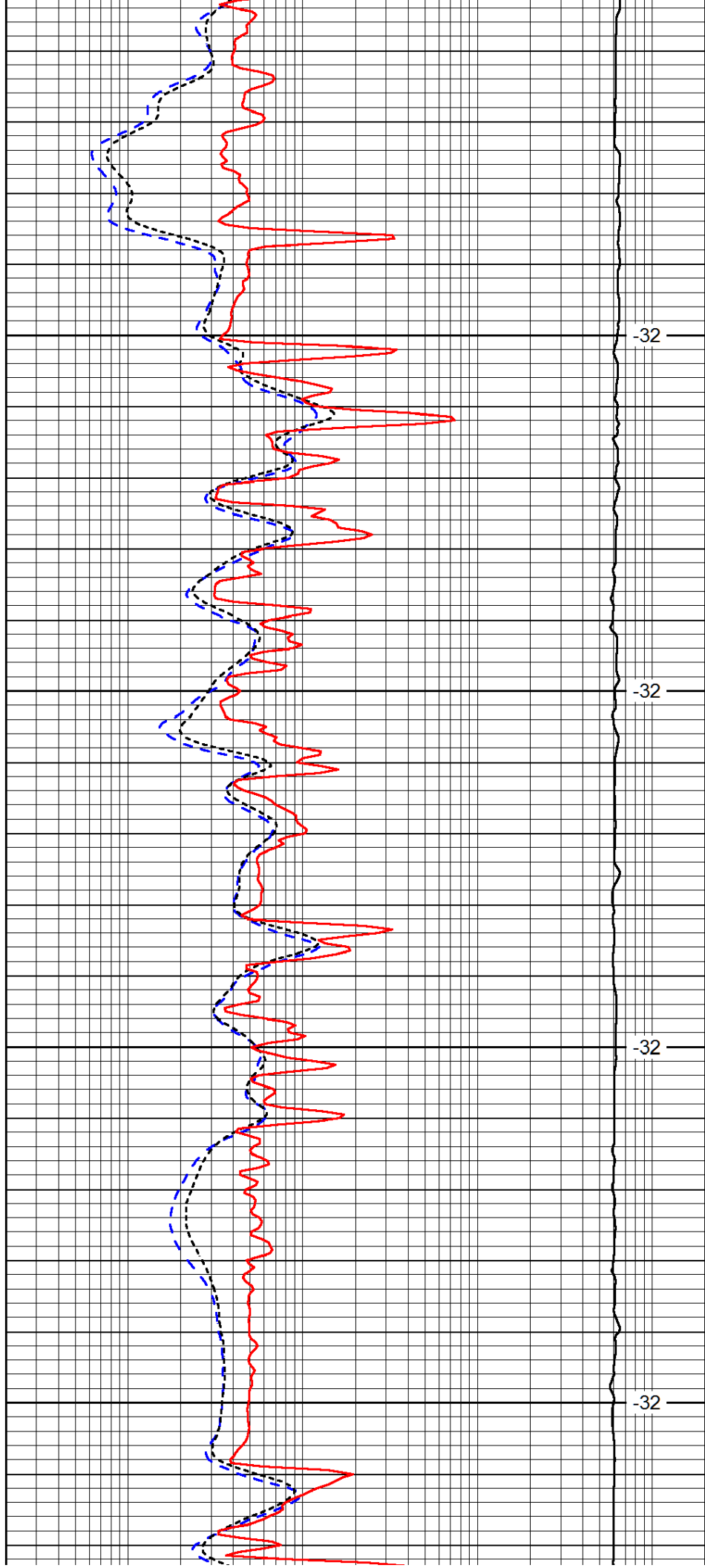


2400

2450

2500

2550

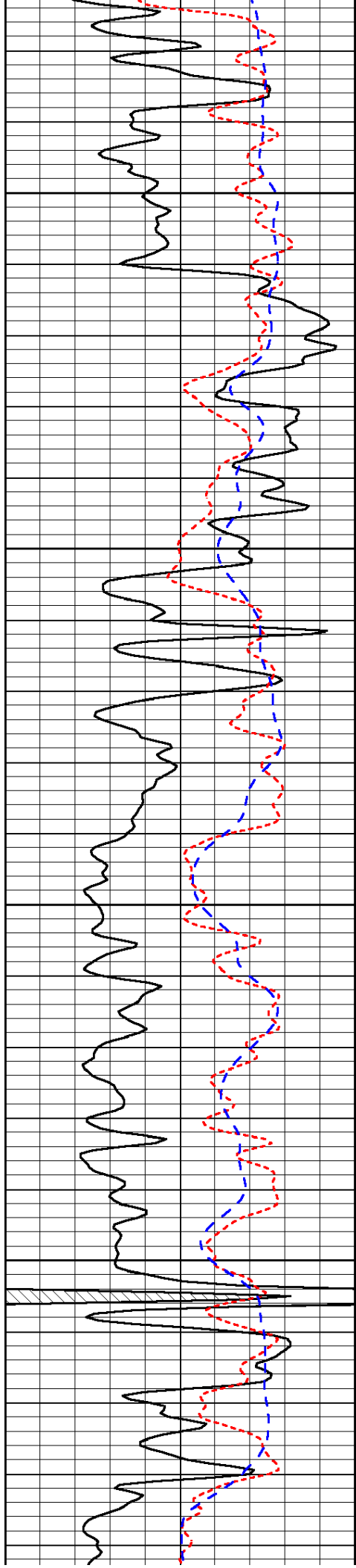


-32

-32

-32

-32

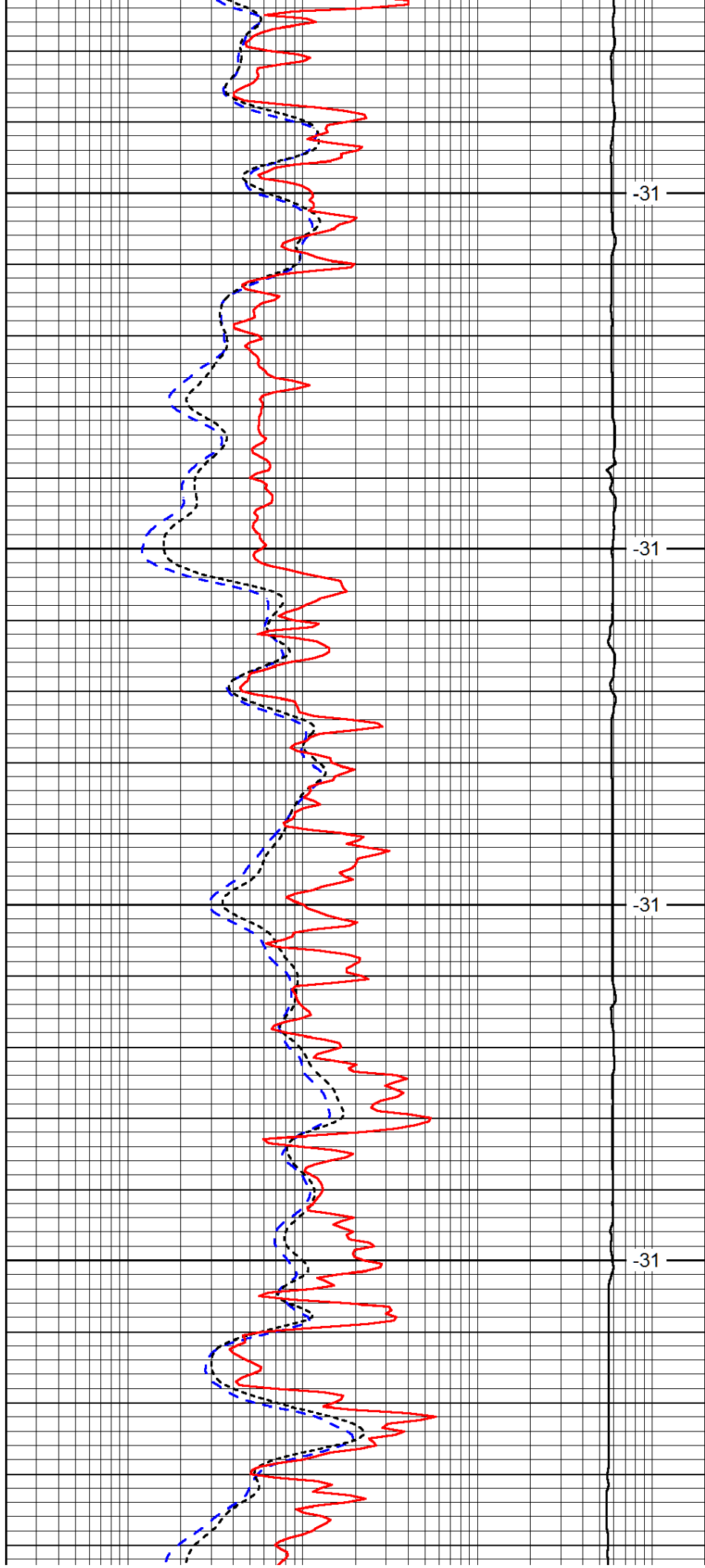


2600

2650

2700

2750

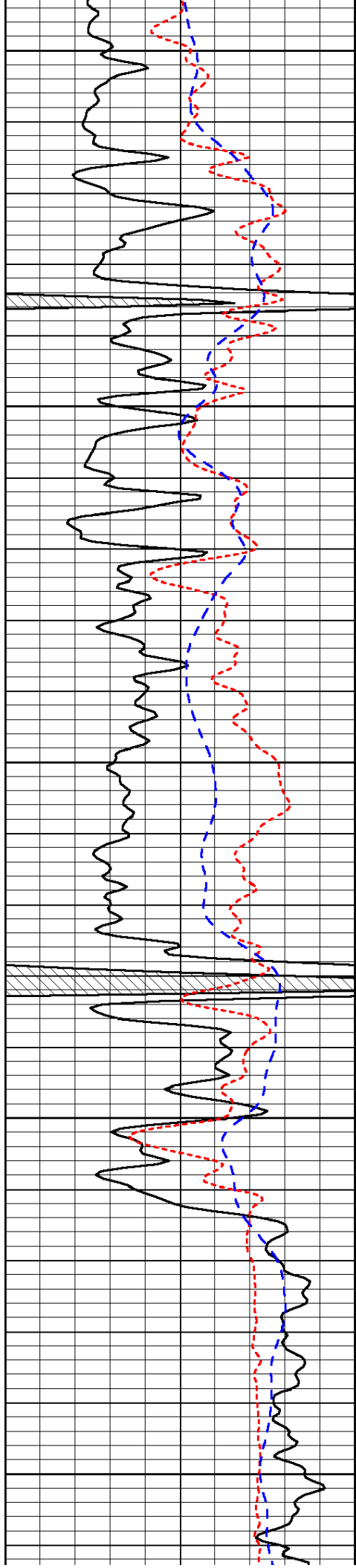


-31

-31

-31

-31



2800

2850

2900

2950

3000

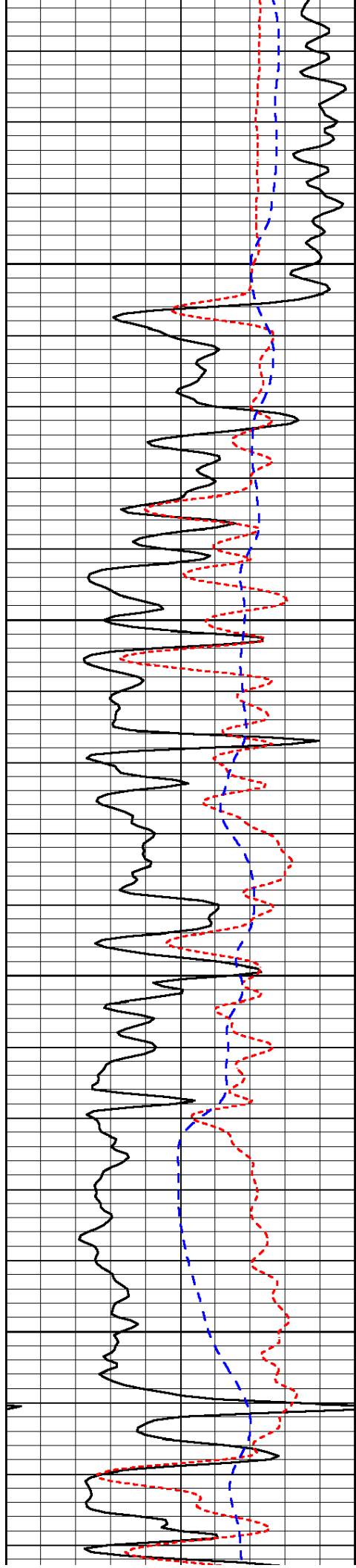
-31

-31

-30

-30

-29

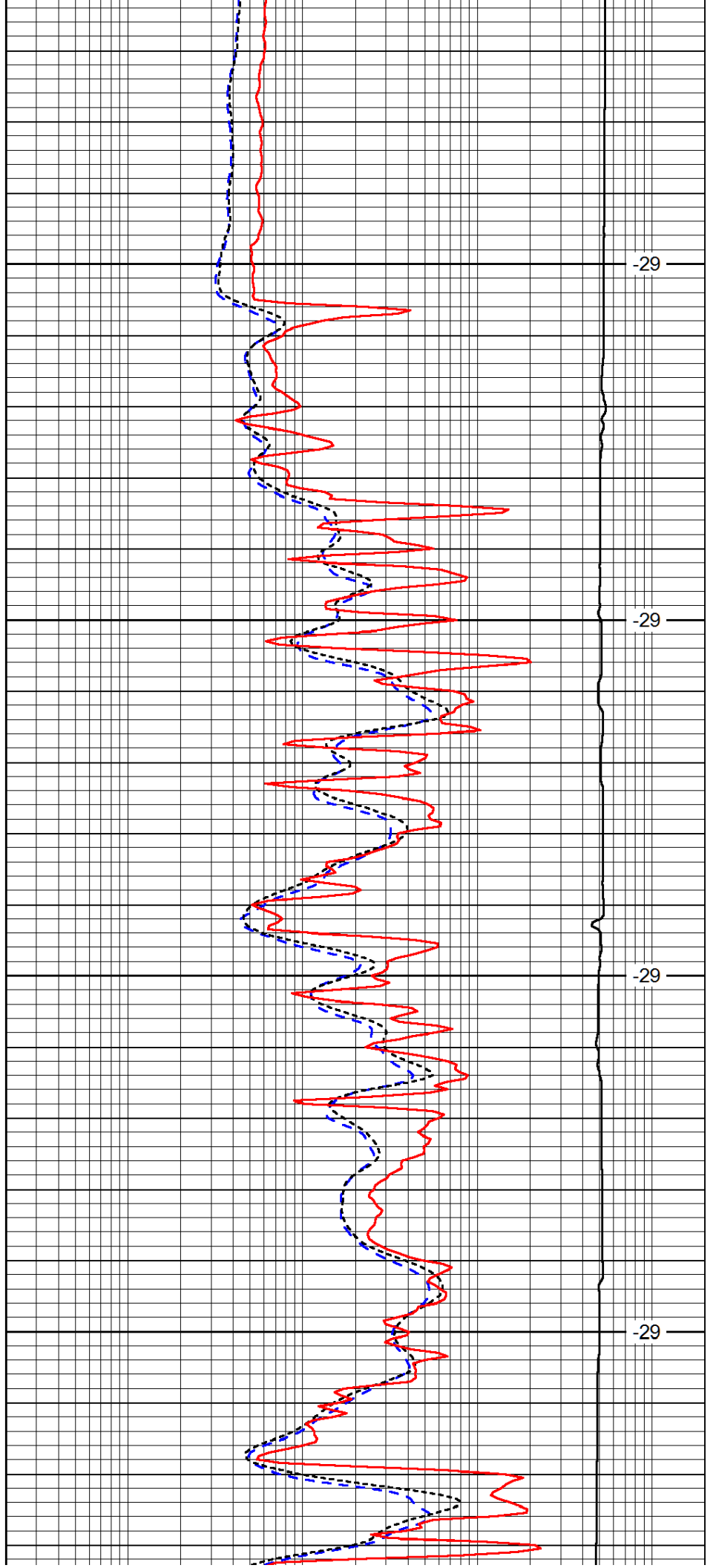


3050

3100

3150

3200

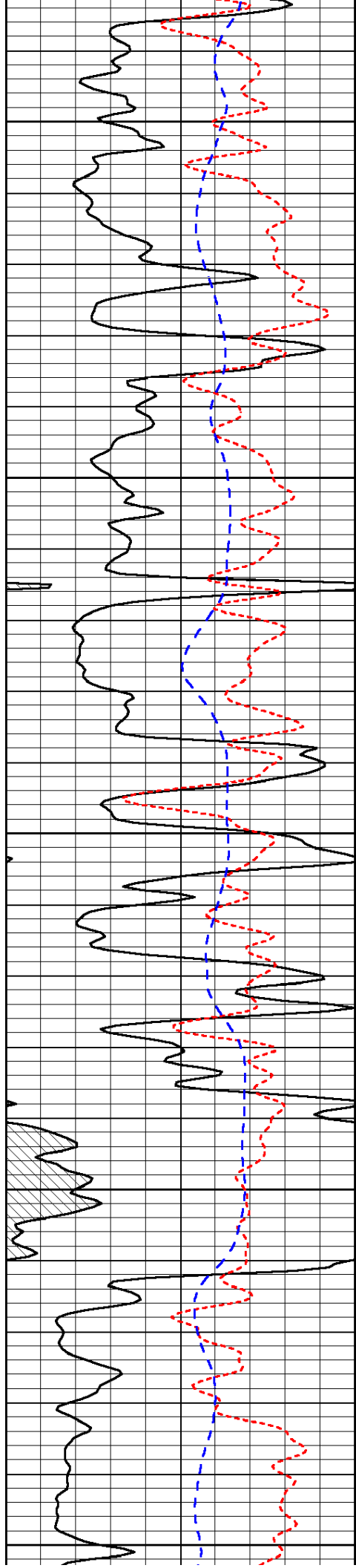


-29

-29

-29

-29



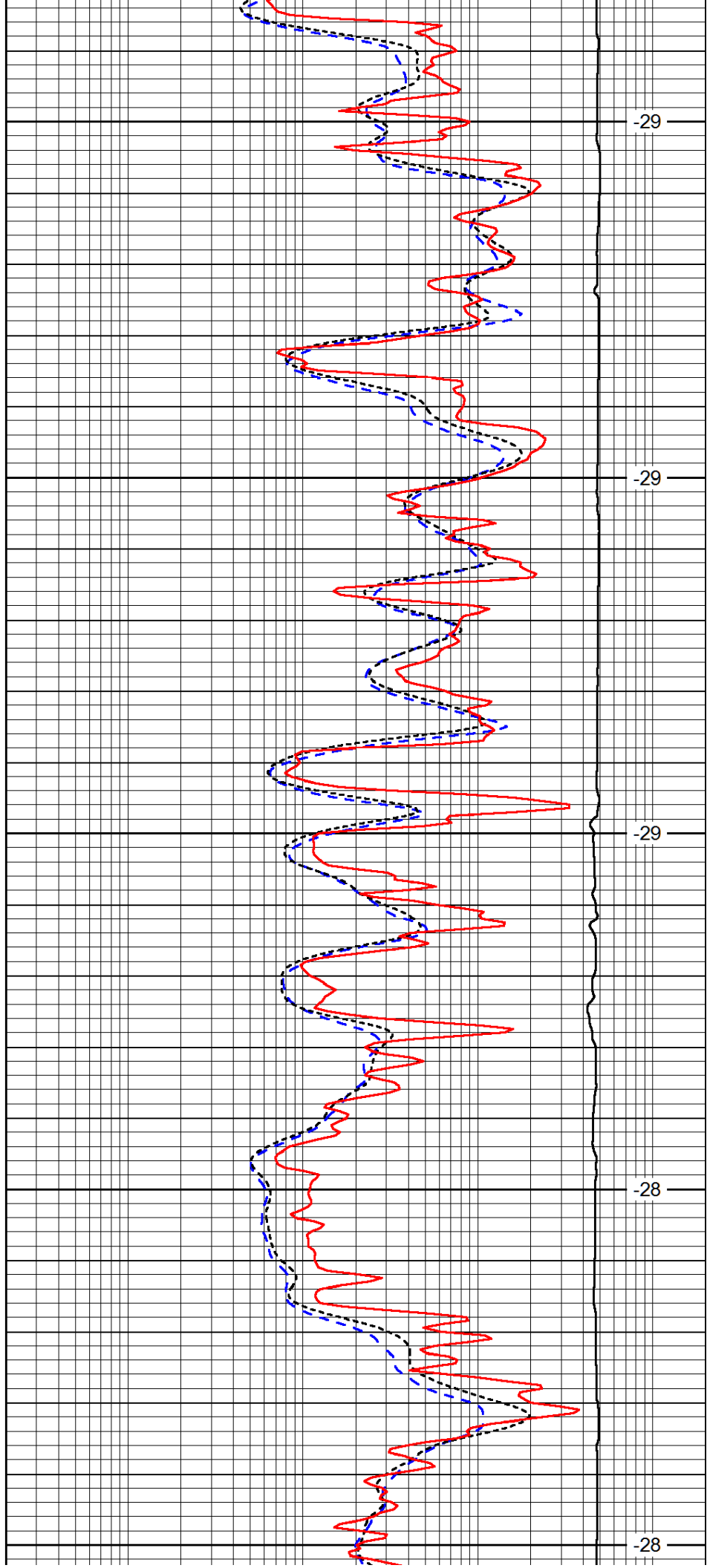
3250

3300

3350

3400

3450



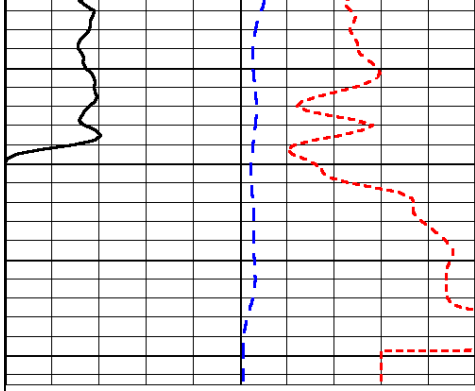
-29

-29

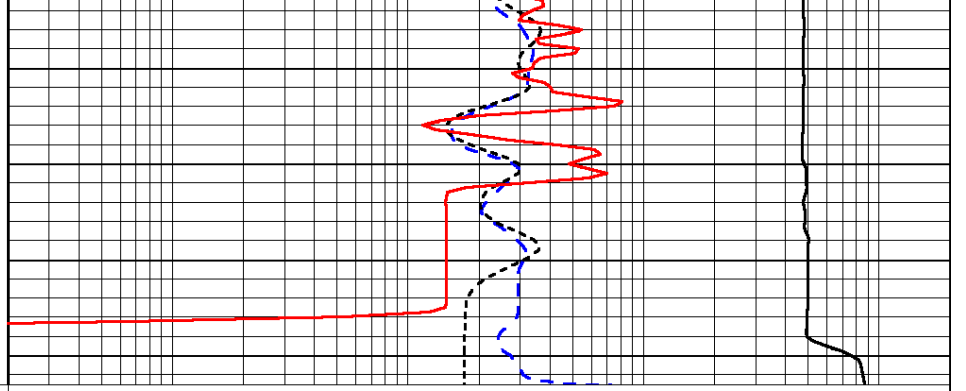
-29

-28

-28



0	Gamma Ray (GAPI)	150
-160	RXO/RT	40
-200	SP (mV)	0



0.2	Deep Resistivity (Ohm-m)	2000
0.2	Medium Resistivity (Ohm-m)	2000
0.2	Shallow Resistivity (Ohm-m)	2000
10000	Line Tension (lb)	0

LSPD
(ft/min)