



Pioneer Energy Services

Microresistivity Log

API No.	15-159-22,740-00-00	
Company	Mike Kelso Oil, Inc.	
Well	Warner #2	
Field	Chase-Silica	
County	Rice	State
Location	SE NE NW NW 4785' FSL & 4033' FEL	Kansas
Sec: 15	Twp: 20S	Rge: 10W
Permanent Datum	Ground Level	Elevation 1828
Log Measured From	Kelly Bushing	8 Ft. Above Perm. Datum
Drilling Measured From	Kelly Bushing	
		Other Services CNL/CDL DIL
		Elevation K.B. 1836 D.F. 1828 G.L. 1828

Date	6/3/2013
Run Number	Two
Depth Driller	3490
Depth Logger	3488
Bottom Logged Interval	3487
Top Log Interval	2000
Casing Driller	8.625 @ 263
Casing Logger	262
Bit Size	7.875
Type Fluid in Hole	Chemical
Salinity, ppm CL	5500
Density / Viscosity	9.1 56
pH / Fluid Loss	10.5 8.2
Source of Sample	Flowline
Rm @ Meas. Temp	0.50 @ 80
Rmf @ Meas. Temp	0.38 @ 80
Rmc @ Meas. Temp	0.68 @ 80
Source of Rmf / Rmc	Charts
Rm @ BHT	0.36 @ 111
Operating Rig Time	4 Hours
Max Rec. Temp. F	111
Equipment Number	10
Location	Hays
Recorded By	D. Kerr
Witnessed By	Jeff Lawler
	Steve Reed

<<< Fold Here >>>

All interpretations are opinions based on inferences from electrical or other measurements and we cannot and do not guarantee the accuracy or correctness of any interpretation, and we shall not, except in the case of gross or willful negligence on our part, be liable or responsible for any loss, costs, damages, or expenses incurred or sustained by anyone resulting from any interpretation made by any of our officers, agents or employees. These interpretations are also subject to our general terms and conditions set out in our current Price Schedule.

Comments

Thank you for using Log-Tech, Inc.
 (785) 625-3858

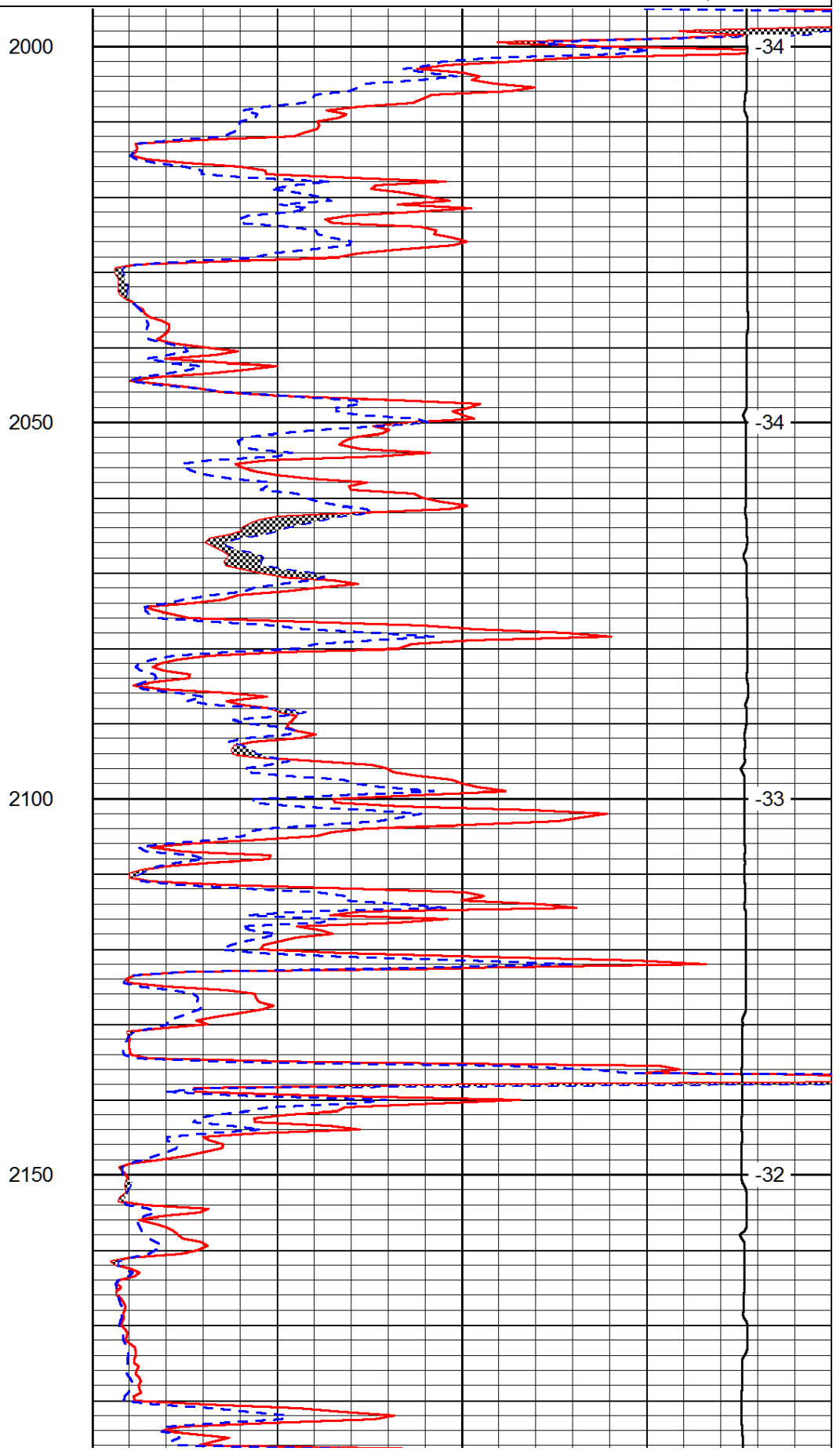
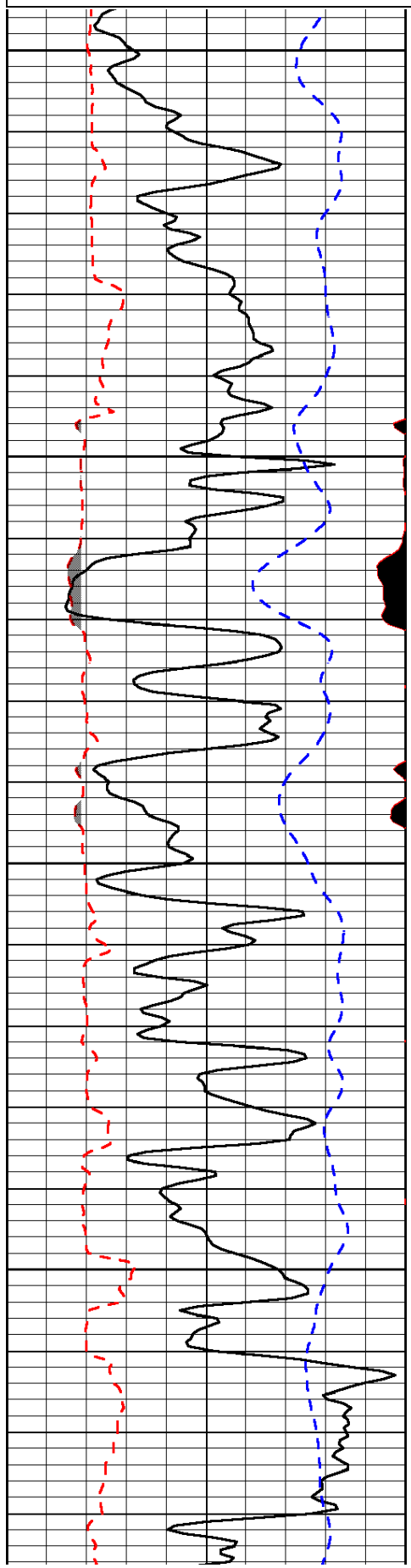
 Ellinwood KS, East to the Raymond Black Top,
 2 South to O RD, 1/4 East, South Into

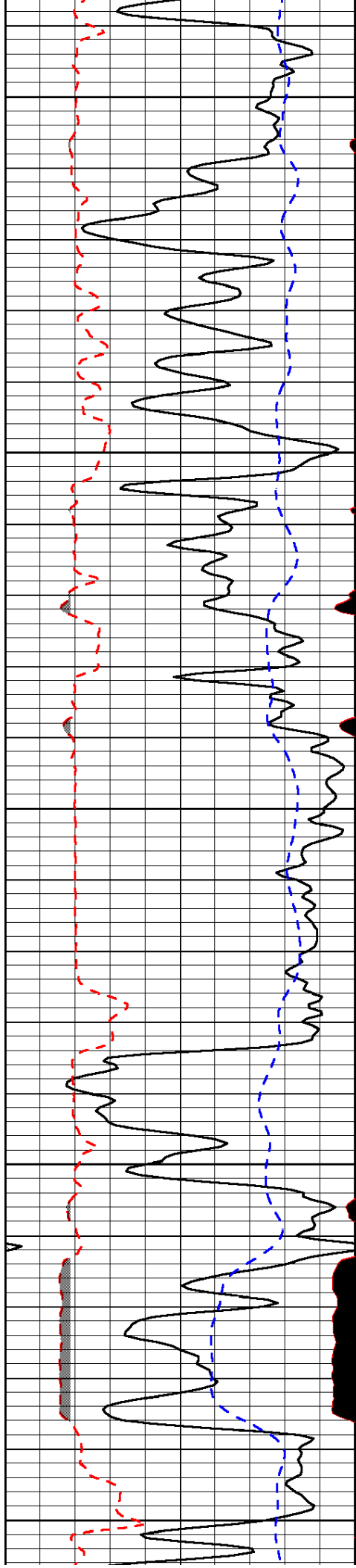
Database File: mikelsohd.db
 Dataset Pathname: DIL/mkstc
 Presentation Format: micro
 Dataset Creation: Mon Jun 03 21:37:07 2013
 Charted by: Depth in Feet scaled 1:240

0	Gamma Ray (GAPI)	150
6	MCAL (in)	16
2.875	Mud Cake (in)	7.875
-200	SP (mV)	0

0	Micro Inverse 1 X 1 (Ohm-m)	40
0	Micro Normal 2" (Ohm-m)	40
10000	Line Weight (lb)	0

LSPD
(ft/min)





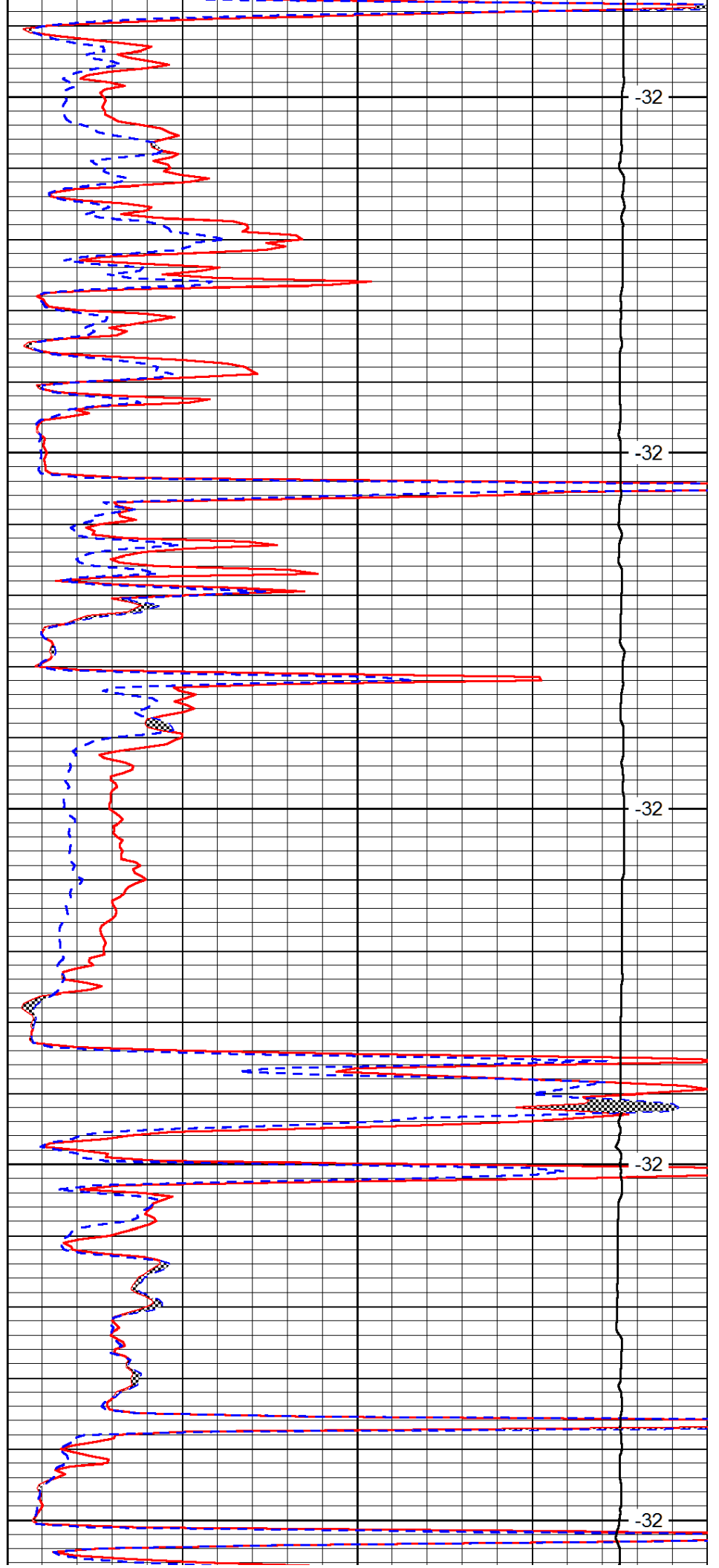
2200

2250

2300

2350

2400



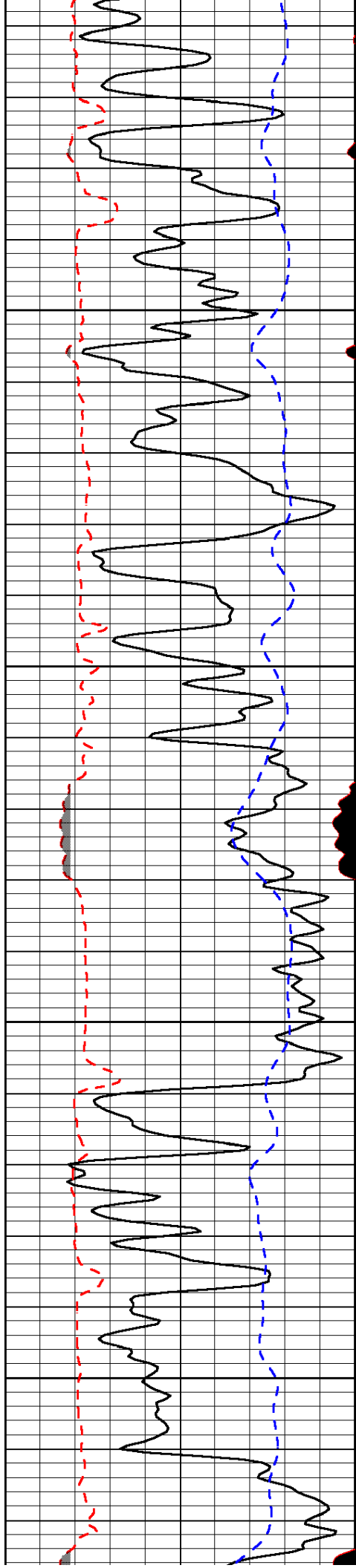
-32

-32

-32

-32

-32

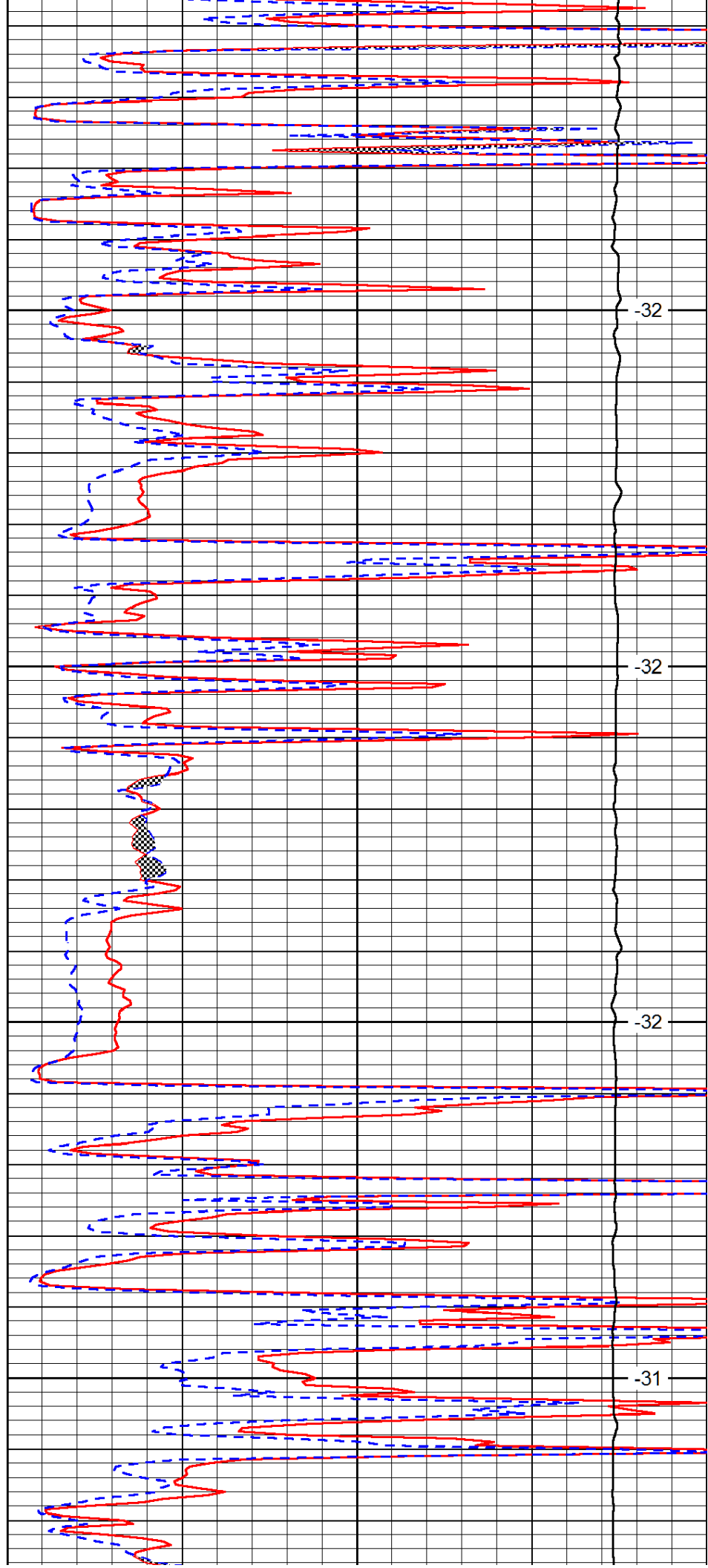


2450

2500

2550

2600

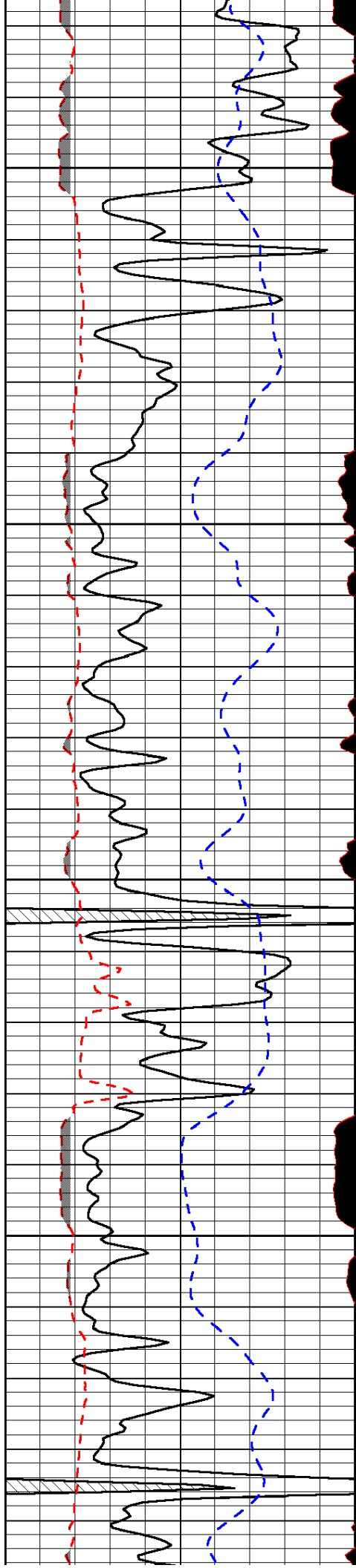


-32

-32

-32

-31

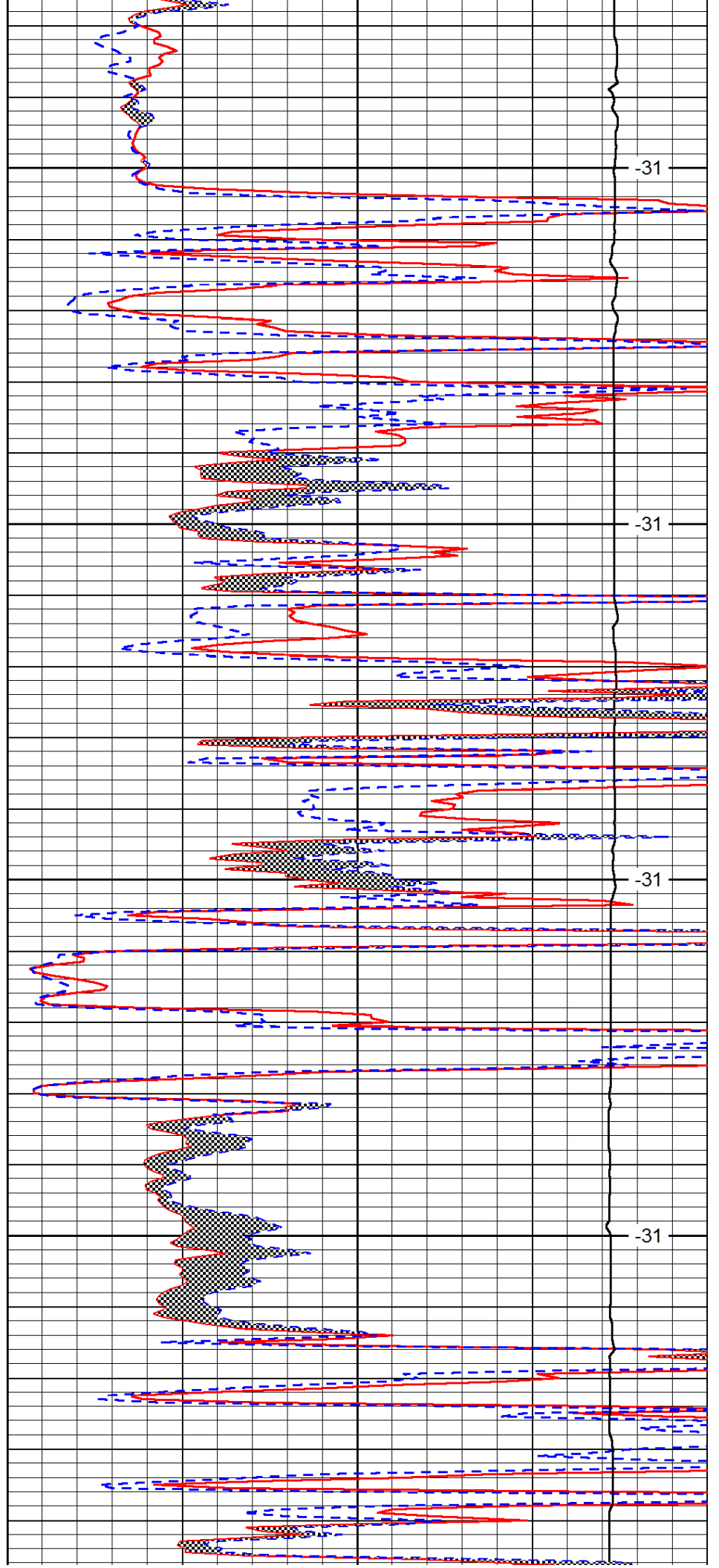


2650

2700

2750

2800

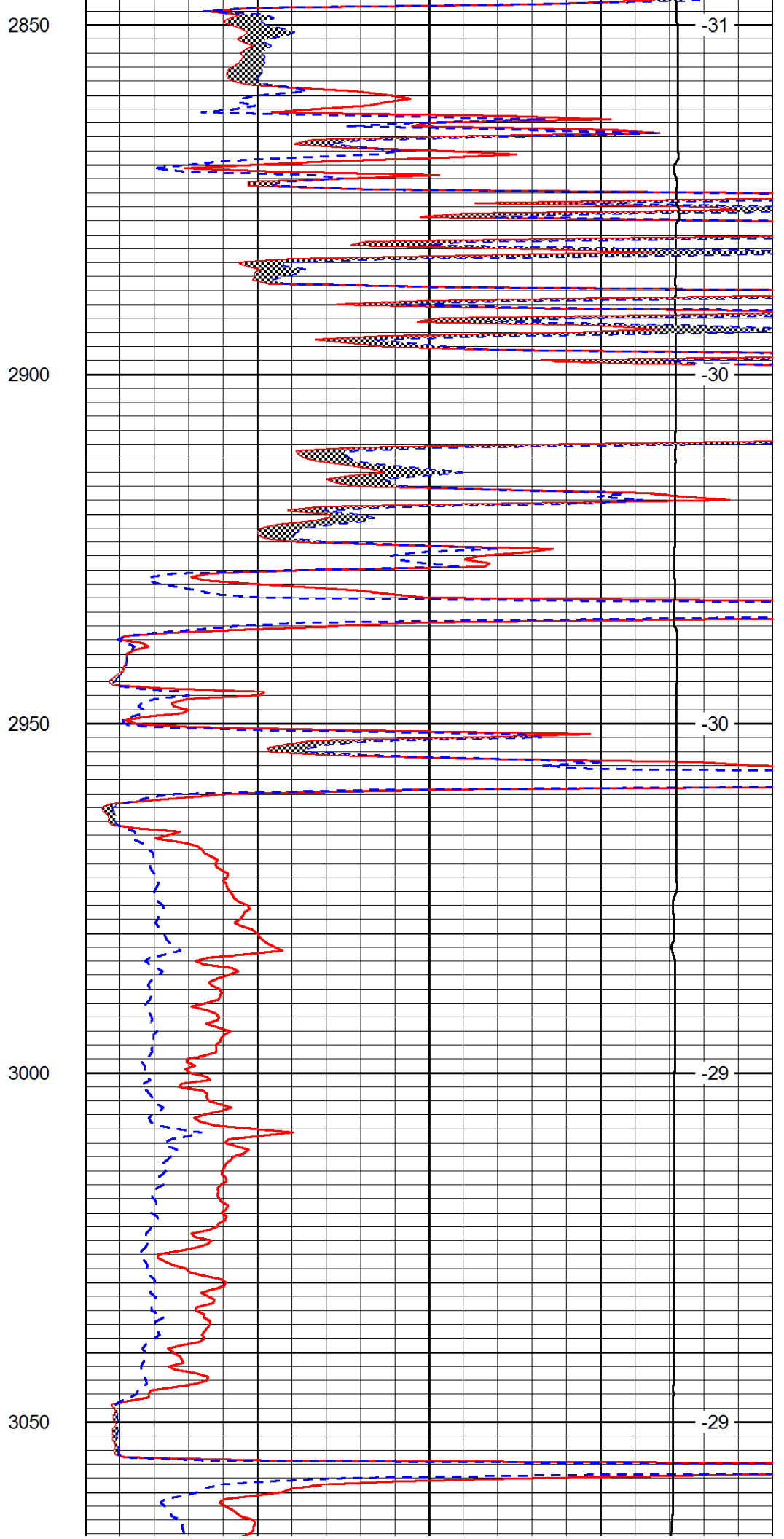
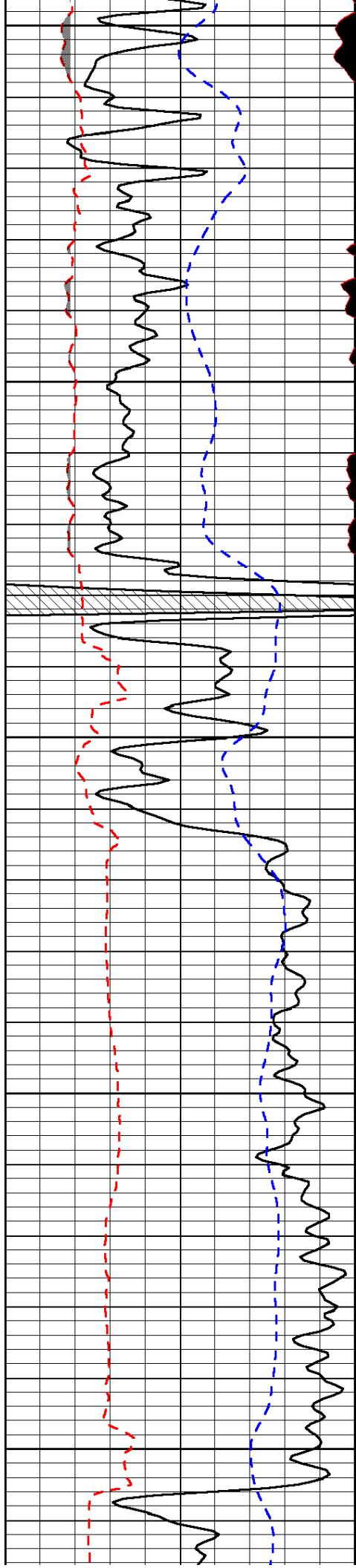


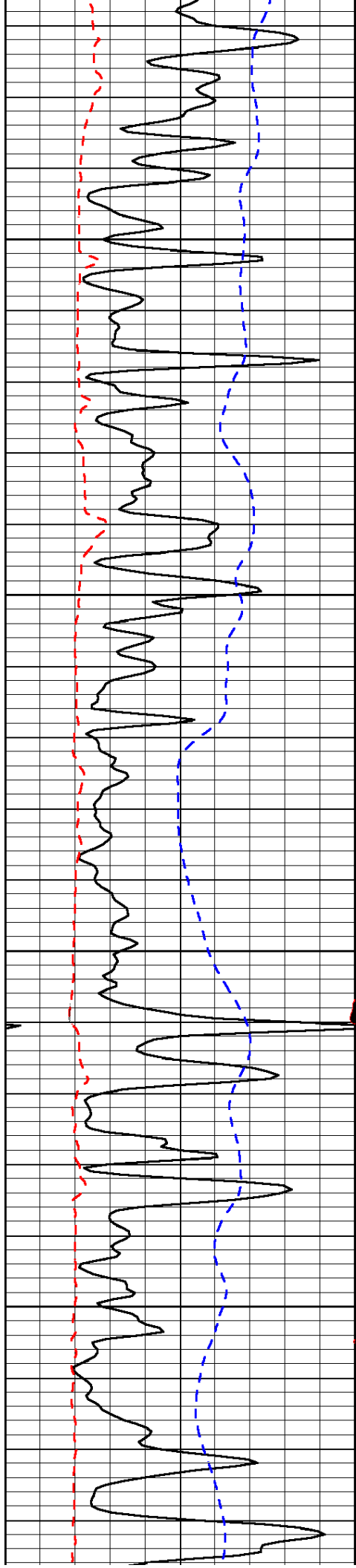
-31

-31

-31

-31



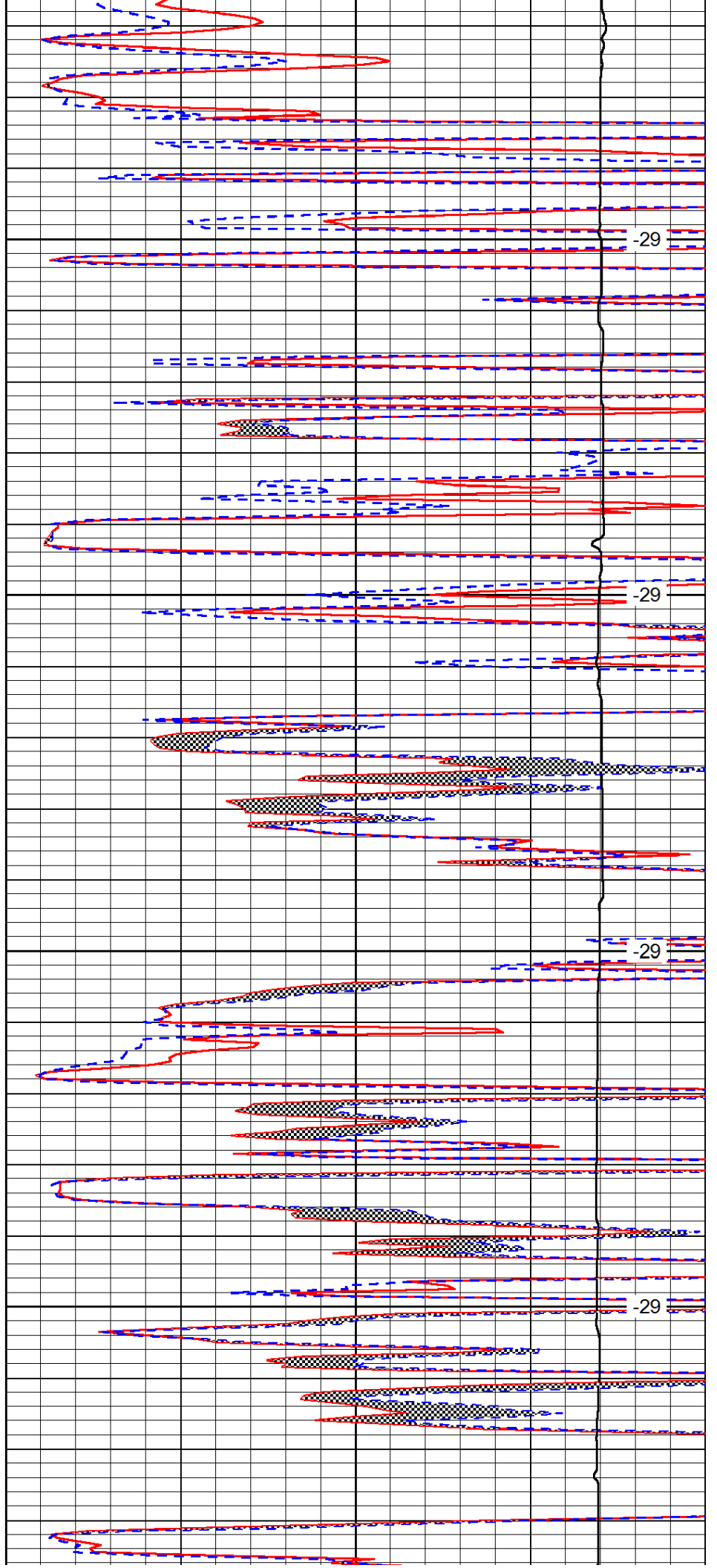


3100

3150

3200

3250

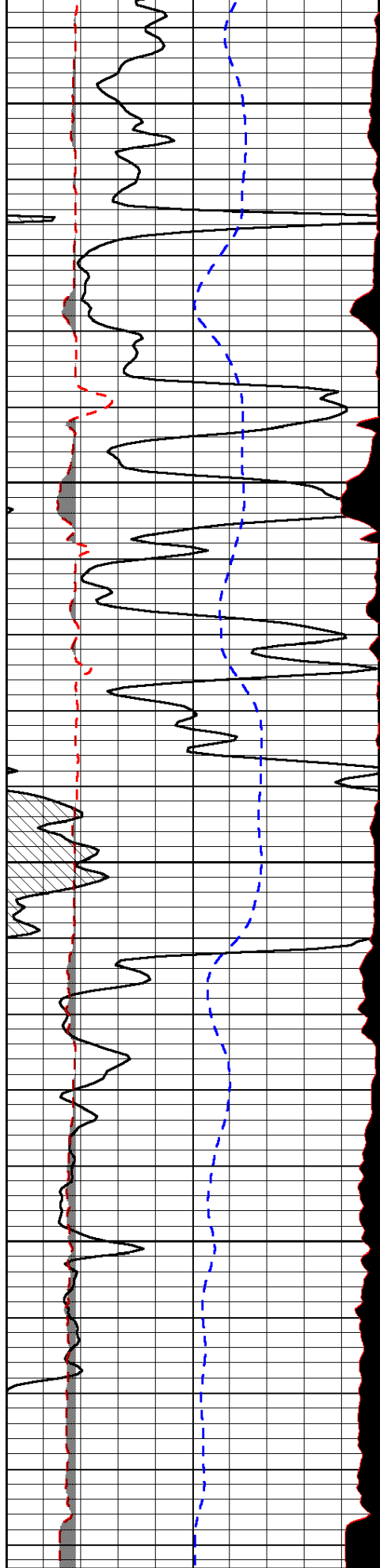


-29

-29

-29

-29



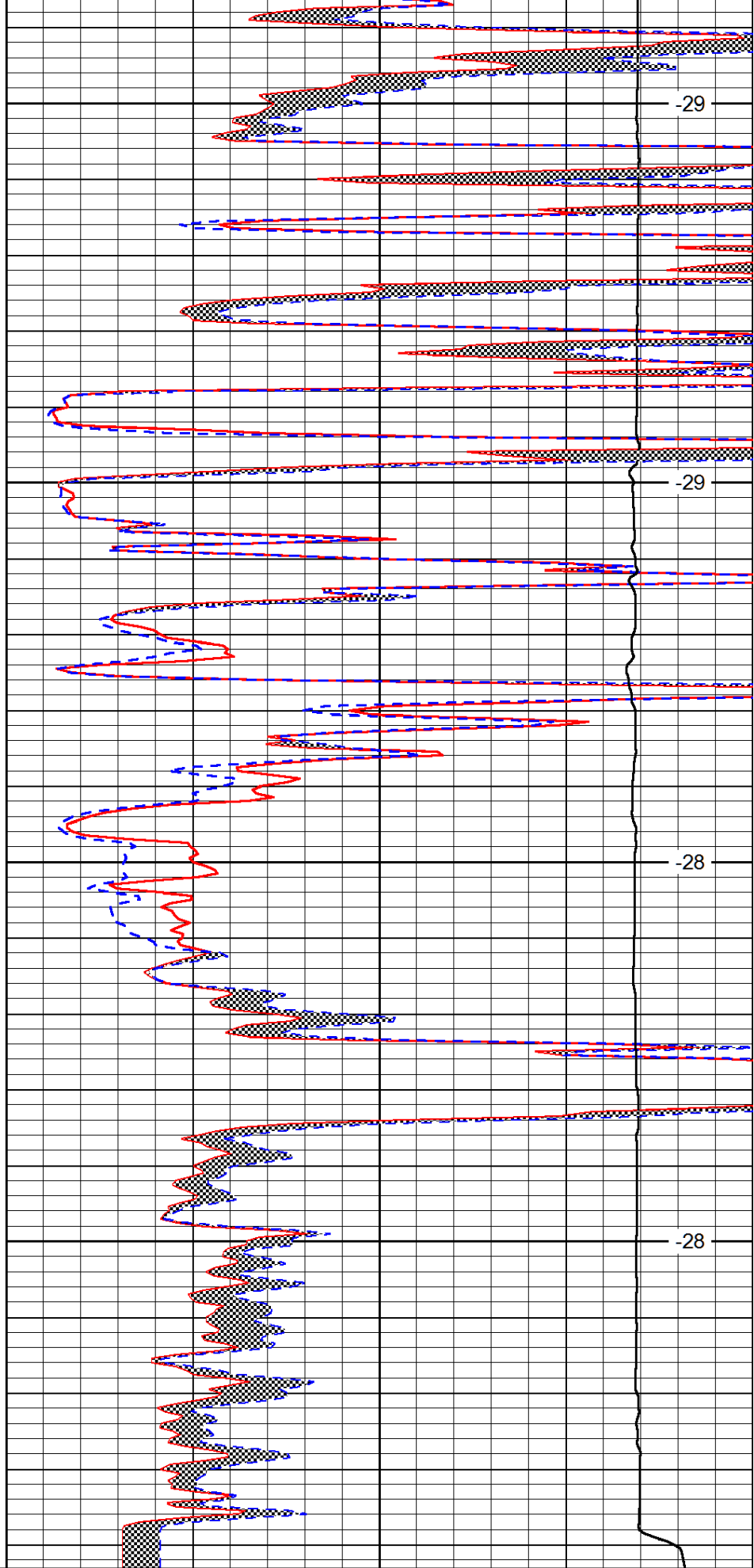
0	Gamma Ray (GAPI)	150
6	MCAL (in)	16
2.875	Mud Cake (in)	7.875

3300

3350

3400

3450



0	Micro Inverse 1 X 1 (Ohm-m)	40
0	Micro Normal 2" (Ohm-m)	40
10000	Line Weight (lb)	0

-29

-29

-28

-28

-200 SP (mV) 0

LSPD
(ft/min)