



Pioneer Energy Services

Dual Compensated Porosity Log

API No.	15-159-22,740-00-00	
Company	Mike Kelso Oil, Inc.	
Well	Warner #2	
Field	Chase-Silica	
County	Rice	State Kansas
Location	SE NE NW NW 4785' FSL & 4033' FEL	
	Sec: 15	Twp: 20S Rge: 10W
		Elevation 1828
		8 Ft. Above Perm. Datum
		Other Services DILMEL
		Elevation K.B. 1836 D.F. 1828 G.L. 1828

Permanent Datum	Ground Level	Elevation 1828
Log Measured From	Kelly Bushing	8 Ft. Above Perm. Datum
Drilling Measured From	Kelly Bushing	
Date	6/3/2013	

Run Number	One
Type Log	CNL / CDL
Depth Driller	3490
Depth Logger	3488
Bottom Logged Interval	3467
Top Logged Interval	2000
Type Fluid In Hole	Chemical
Salinity, PPM CL	5500
Density	9.1
Level	Full
Max. Rec. Temp. F	111
Operating Rig Time	4 Hours
Equipment -- Location	10 Days
Recorded By	D Kerr
Witnessed By	Jeff Lawler

Borehole Record		Casing Record				
Run No.	Bit From	To	Size	Wgt.	From	To
One	12.25	00	263	8.625	23#	00
Two	7.875	263	TD			263

<<< Fold Here >>>

All interpretations are opinions based on inferences from electrical or other measurements and we cannot and do not guarantee the accuracy or correctness of any interpretation, and we shall not, except in the case of gross or willful negligence on our part, be liable or responsible for any loss, costs, damages, or expenses incurred or sustained by anyone resulting from any interpretation made by any of our officers, agents or employees. These interpretations are also subject to our general terms and conditions set out in our current Price Schedule.

Comments

Thank you for using Log-Tech, Inc.
(785) 625-3858

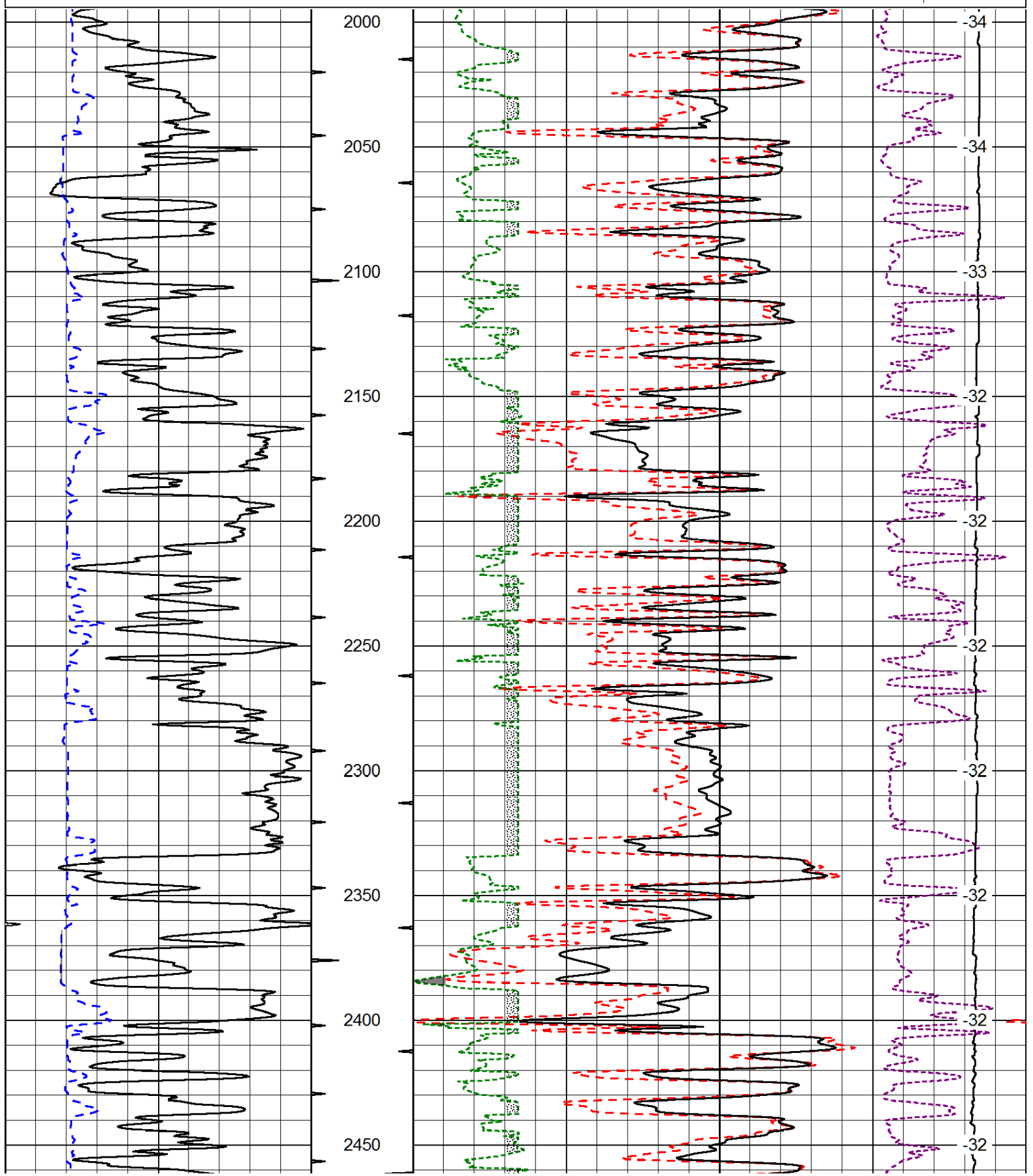
Ellinwood KS, East to the Raymond Black Top,
2 South to O RD, 1/4 East, South Into

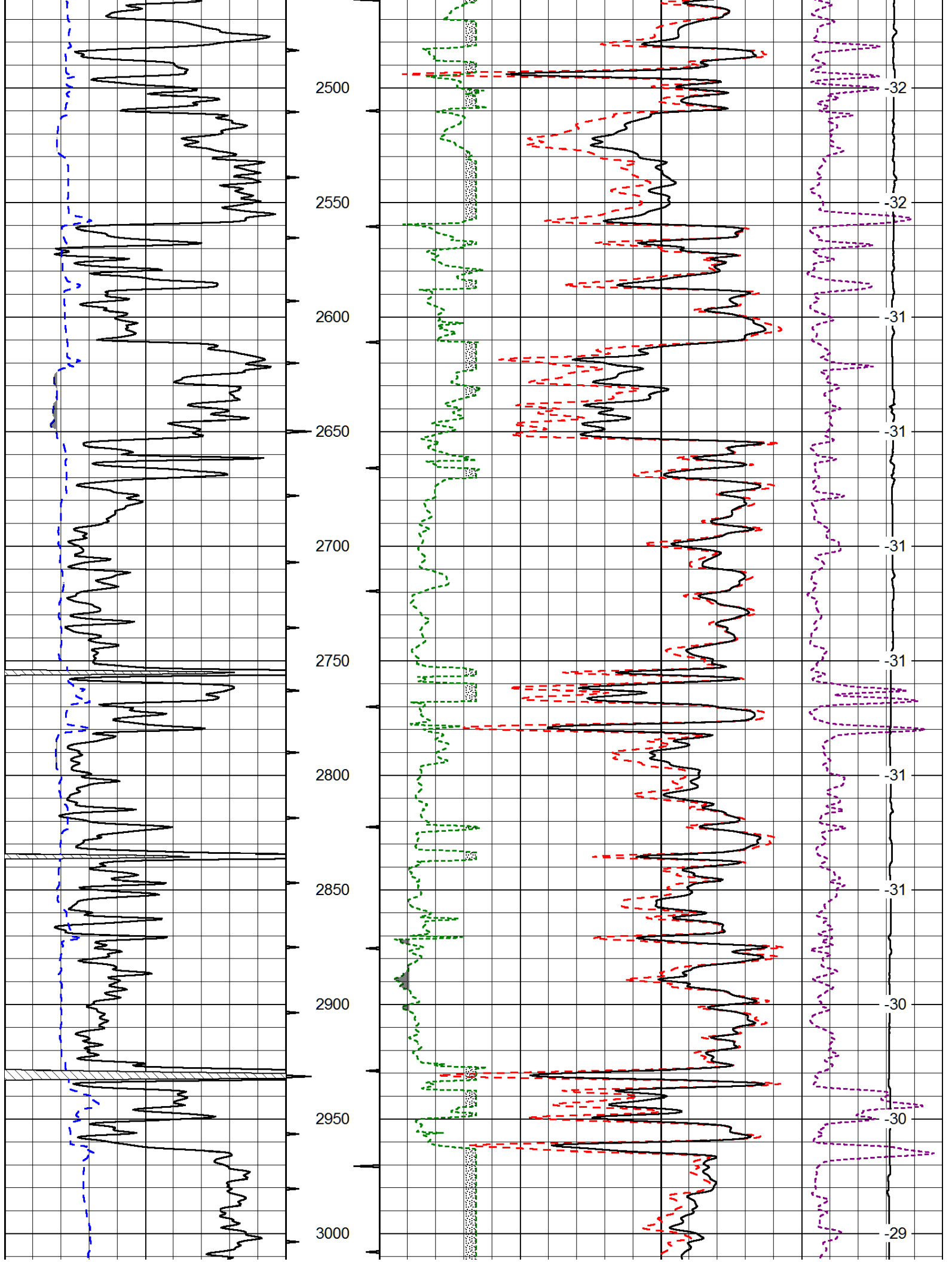
Database File: mikelsohd.db
 Dataset Pathname: DIL/mkst
 Presentation Format: cdl
 Dataset Creation: Mon Jun 03 21:37:07 2013
 Charted by: Depth in Feet scaled 1:600

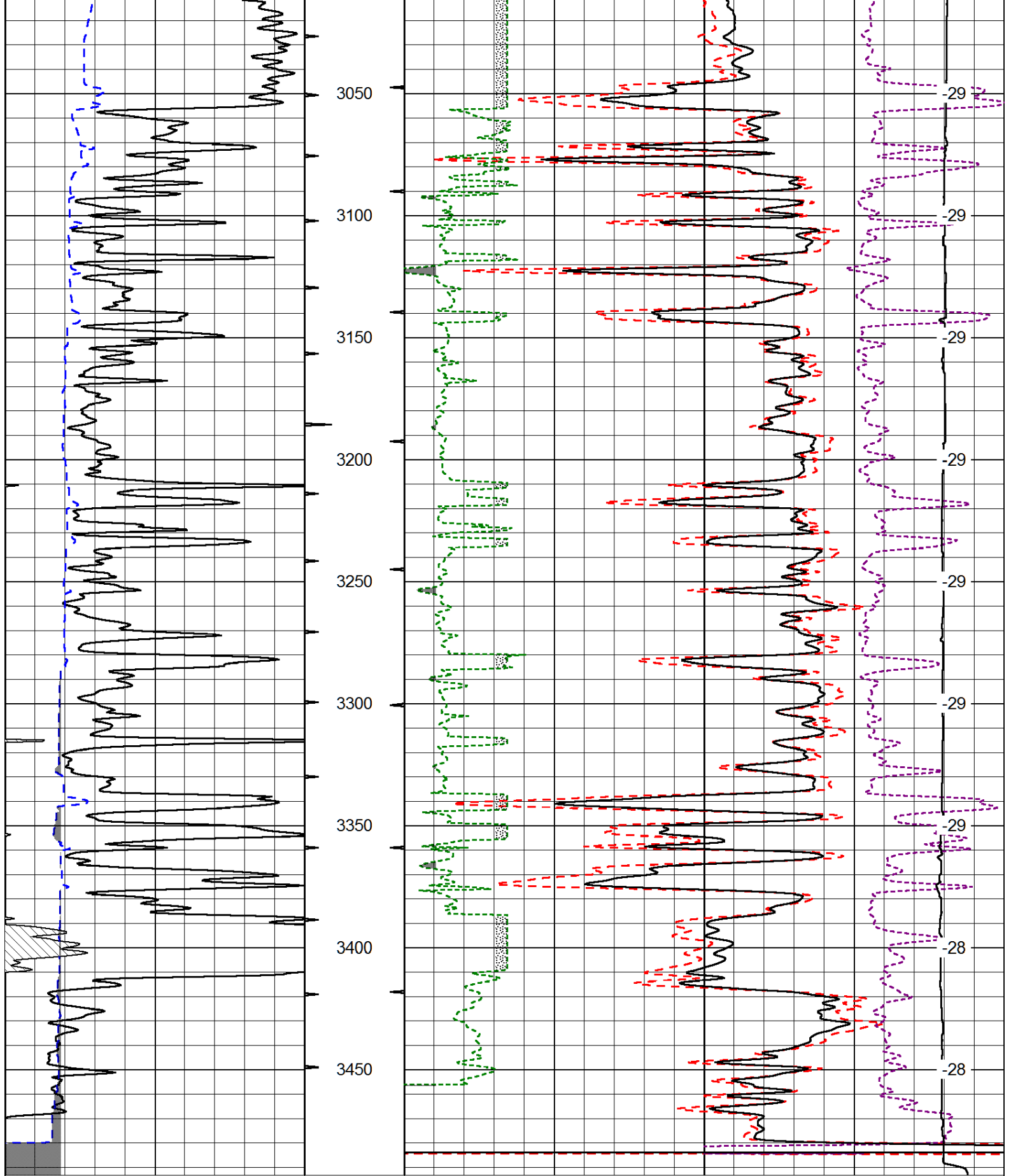
0	Gamma Ray (GAPI)	150
6	Caliper (in)	16

30	Compensated Density (pu)		-10
2	Bulk Density (g/cc)		3
15000	Line Tension (lb)		0
2.625	DGA (g/cc)	3.425	-0.25
	Correction (g/cc)		0.25

LSPD
(ft/min)







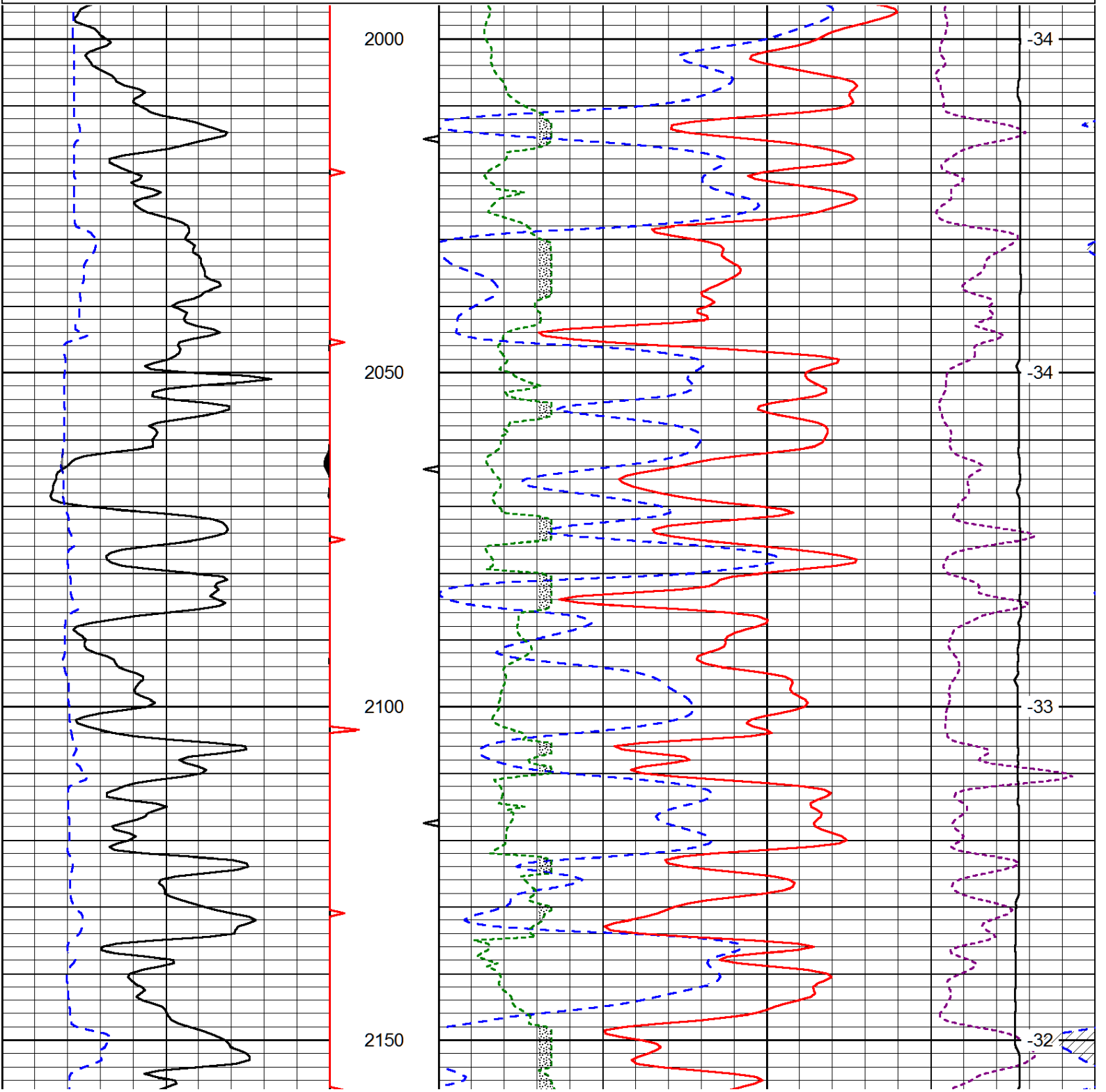
0	Gamma Ray (GAPI)	150
6	Caliper (in)	16

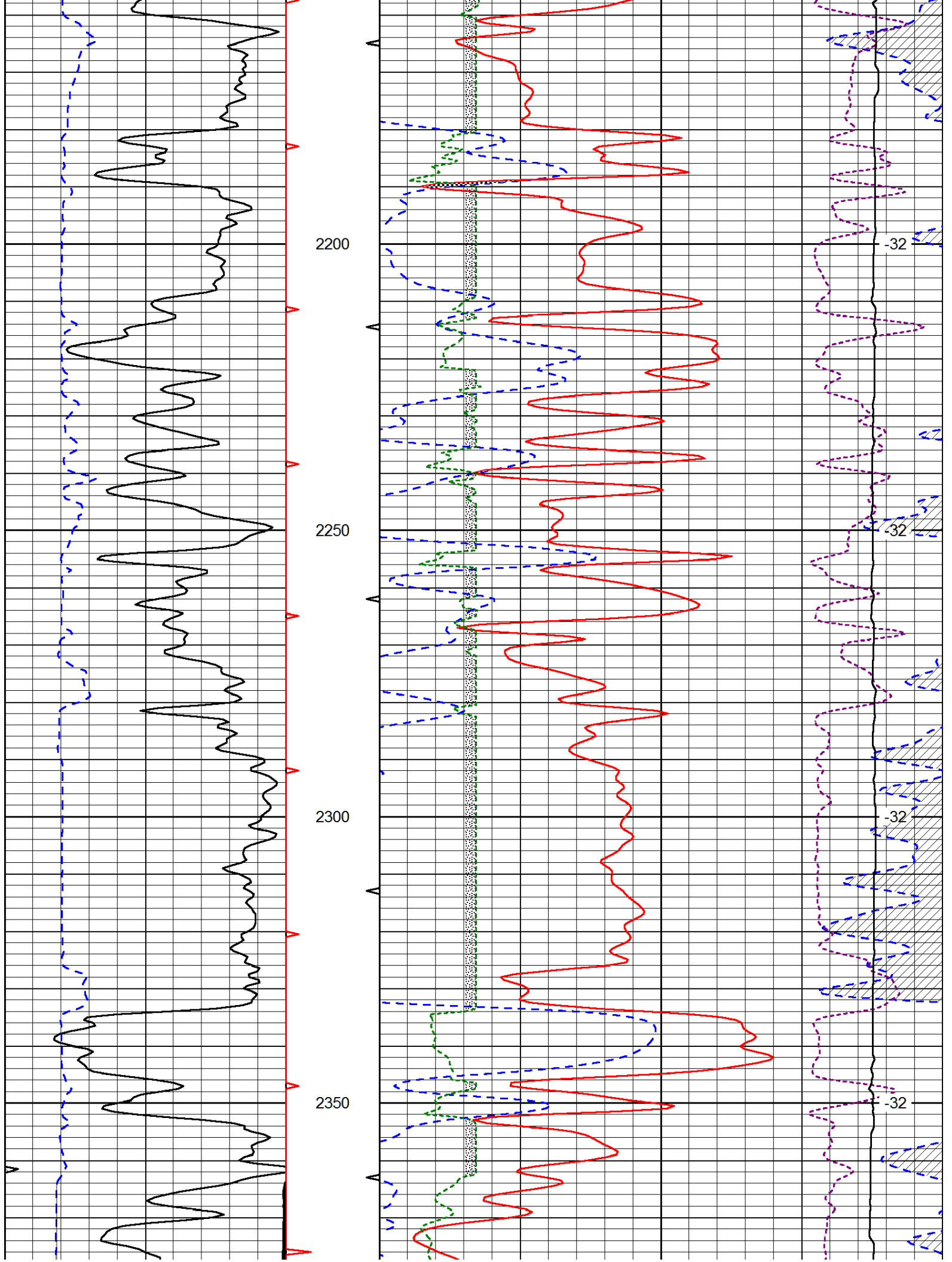
30	Compensated Density (pu)		-10	
2	Bulk Density (g/cc)		3	
15000	Line Tension (lb)		0	
2.625	DGA (g/cc)	3.425 -0.25	Correction (g/cc)	0.25

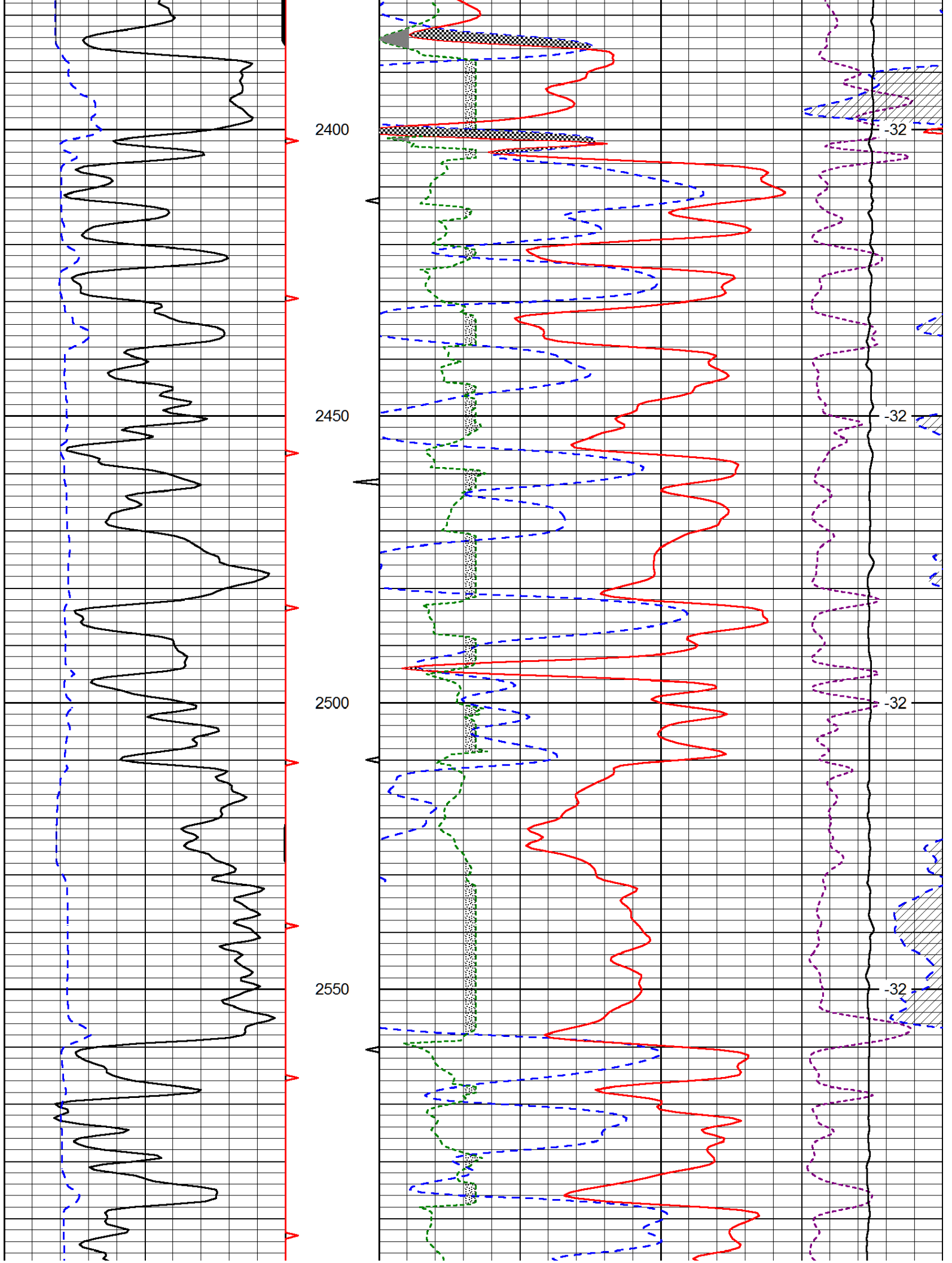
LSPD
(ft/min)

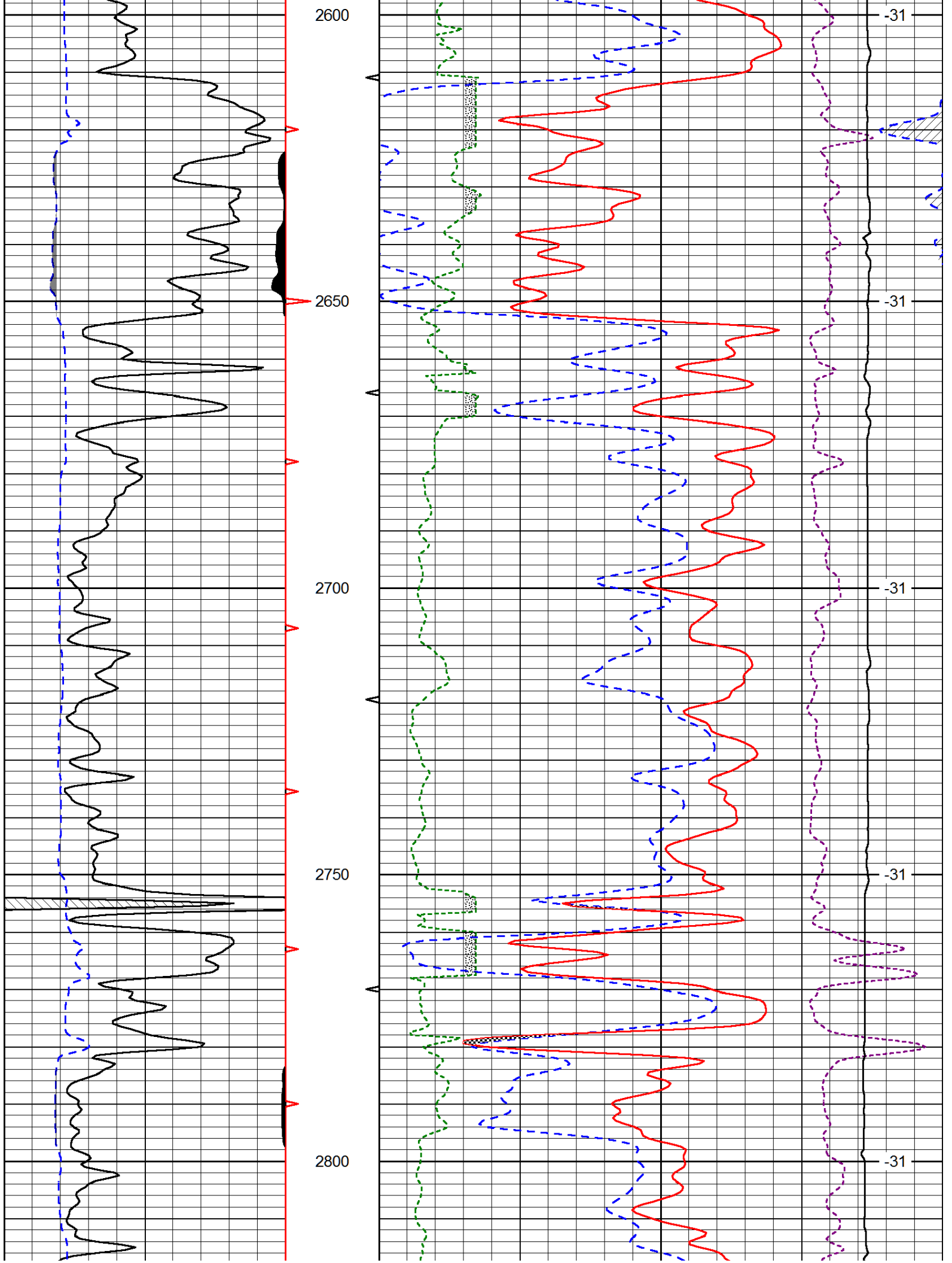
Database File: mikelsohd.db
 Dataset Pathname: DIL/mkstk
 Presentation Format: cndlspec
 Dataset Creation: Mon Jun 03 21:37:07 2013
 Charted by: Depth in Feet scaled 1:240

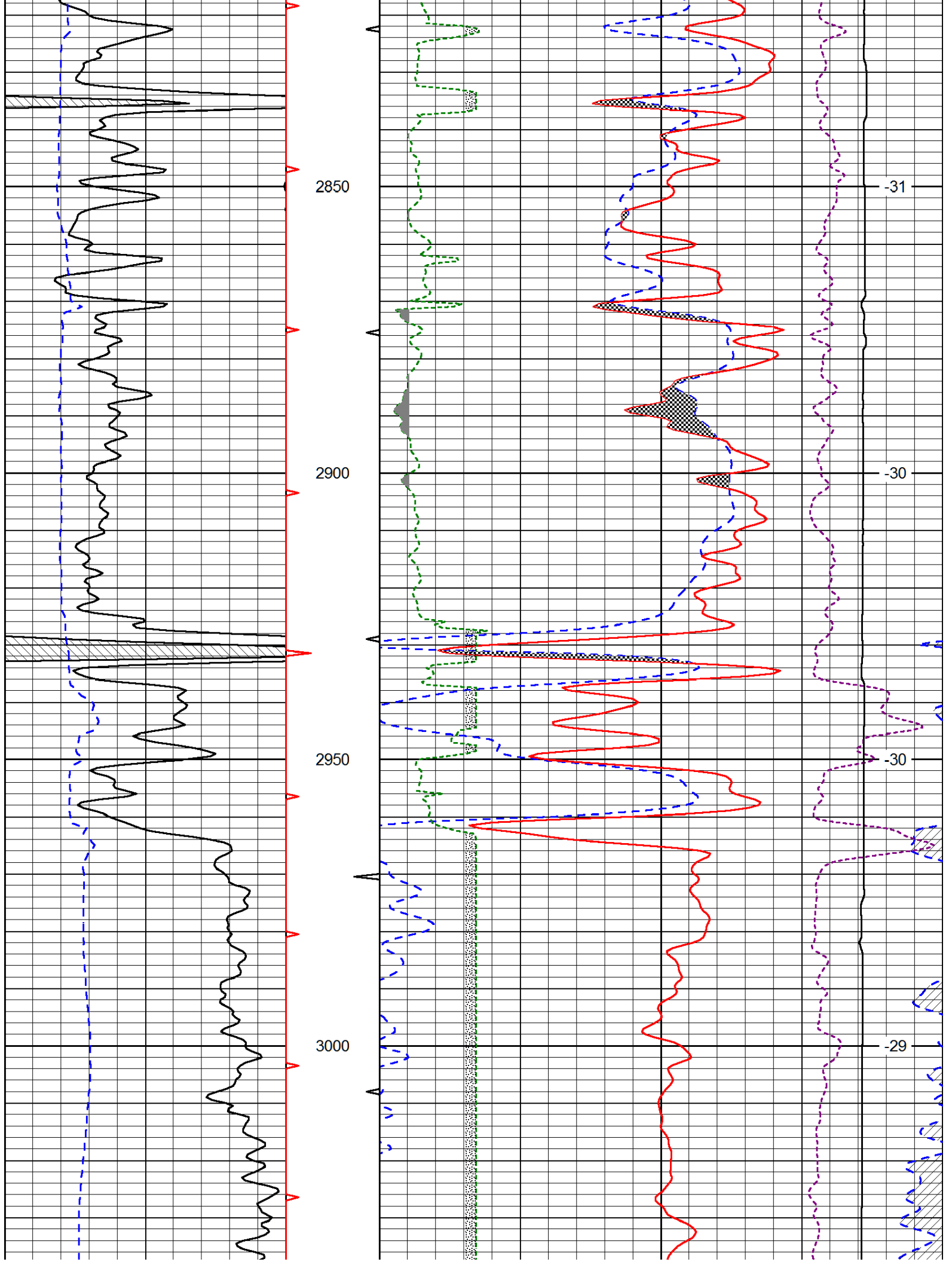
0	Gamma Ray (GAPI)	150	30	CNLS (pu)	-10
6	Caliper (in)	16	30	Compensated Density (2.71 ma) (pu)	-10
			2.625	DGA (g/cc)	3.425
				-0.25	Correction (g/cc)
			10000	Line Tension (lb)	0
					LSPD (ft/min)

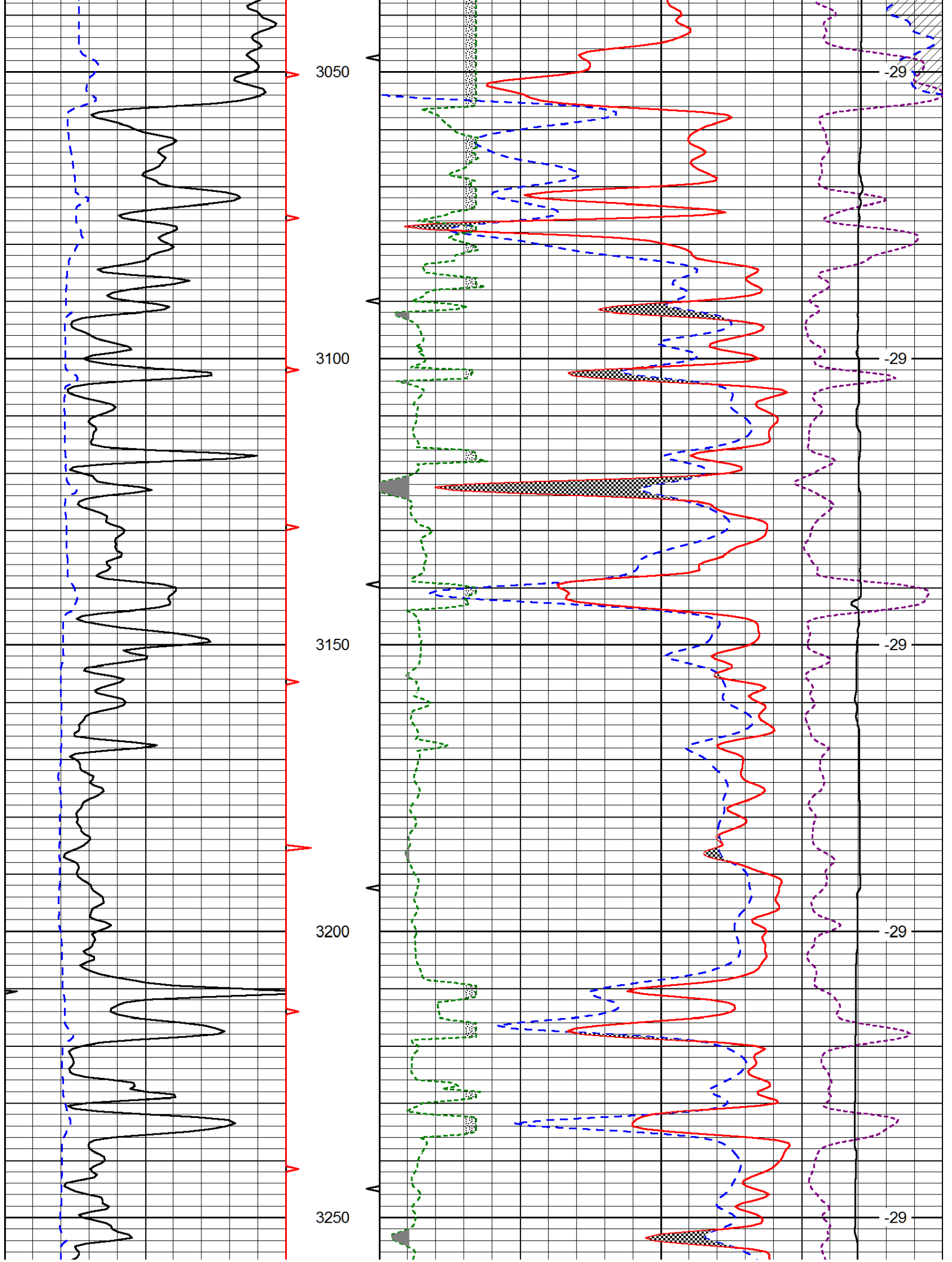


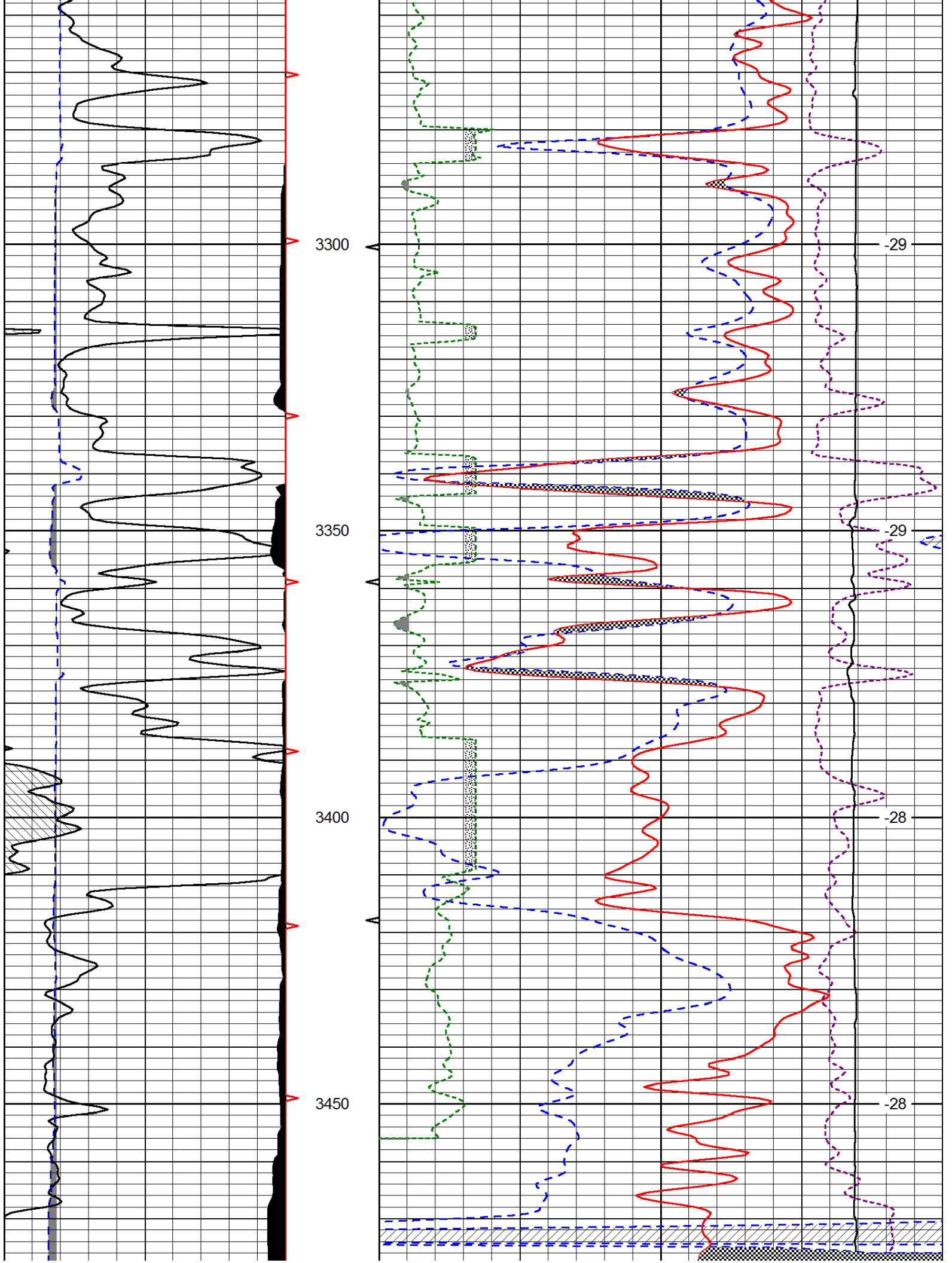


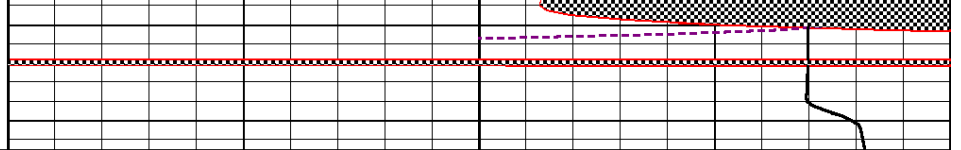
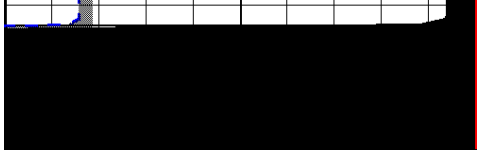












0	Gamma Ray (GAPI)	150
6	Caliper (in)	16

30	CNLS (pu)		-10
30	Compensated Density (2.71 ma) (pu)		-10
2.625	DGA (g/cc)	3.425	-0.25
			Correction (g/cc)
10000	Line Tension (lb)		0

LSPD (ft/min)
