

Company VESS OIL CORPORATION
Well AUGUSTA UNIT 8-63
Field AUGUSTA
Country U.S.A.
State/Prv KANSAS

Company VESS OIL CORPORATION
Well AUGUSTA UNIT TRACT 8 #63
Field AUGUSTA
Country U.S.A.
State/Prv KANSAS

Location 1500' FSL - 150' FEL
SEC. 10 **TWP.** 28S **RGE.** 4E
BUTLER COUNTY

Other Services PERFORATE

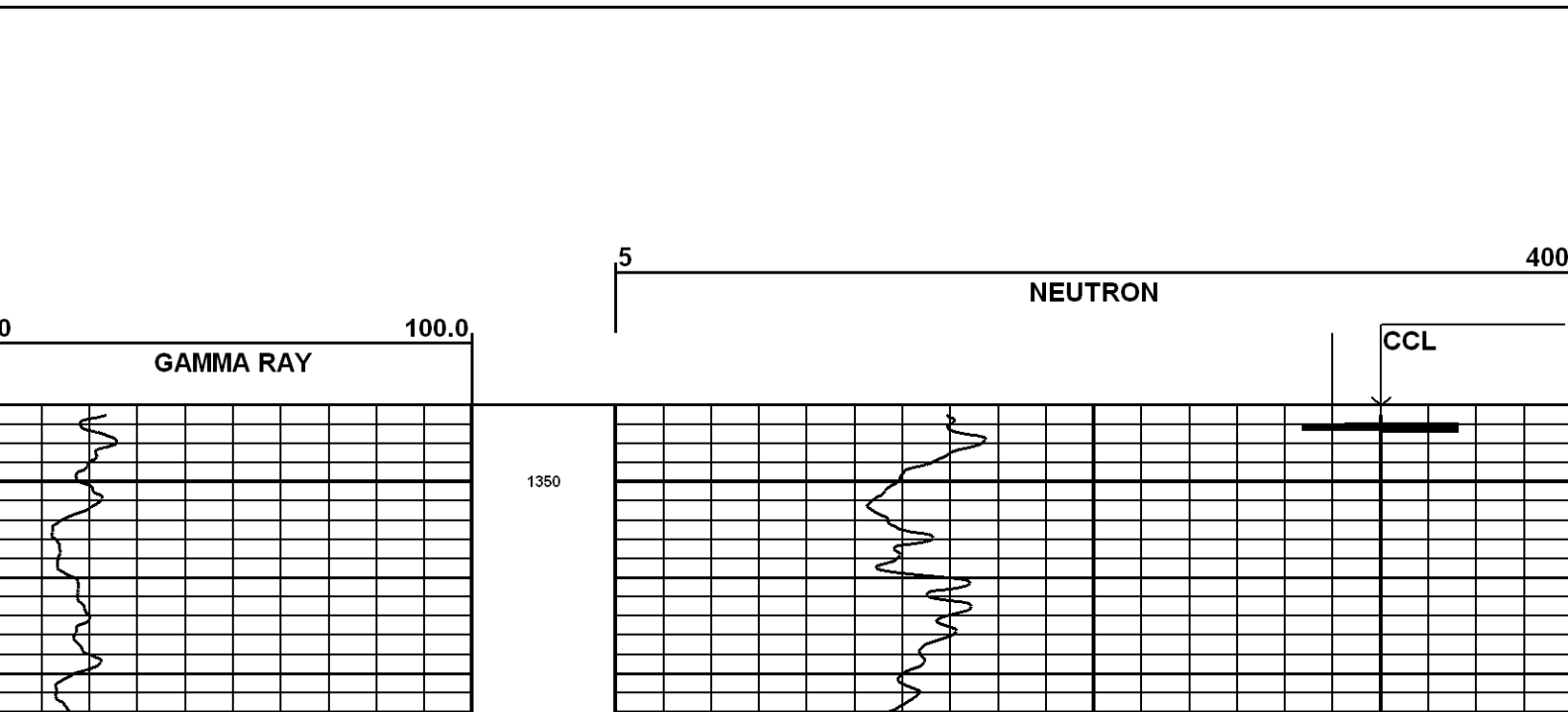
Permanent Datum GROUND LEVEL **Elevation** 1270
Log Measured From KELLY BUSHING
Drilling Measured From KELLY BUSHING

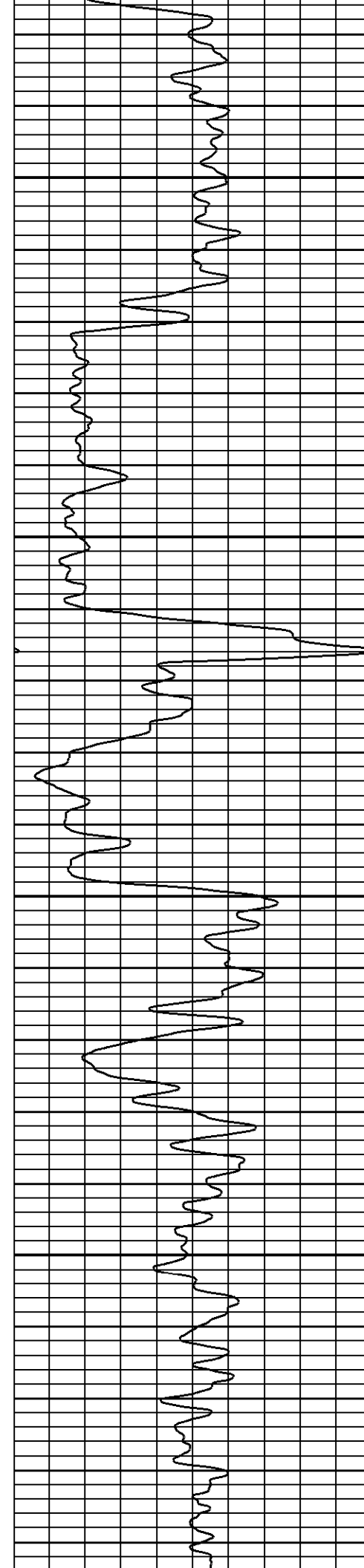
Elevation
K.B. 1276
G.L. 1270

Date	6-17-13						
Run Number	ONE						
Depth Driller	2582						
Depth Logger	2583						
Bottom Logged Interval	2582						
Top Log Interval	1400						
Open Hole Size	WATER						
Type Fluid							
Density / Viscosity							
Max. Well Deviation							
Estimated Cement Top							
Time Well Ready							
Time Logger on Bottom							
Equipment Number	103						
Location	ELDORADO						
Recorded By	SULLIVAN						
Witnessed By	CASEY COATS						
Borehole Record							
Run Number	Bit	From	To	Size	Weight	From	To
Casing Record	SIZE	WEIGHT	FROM	TO	Tubing Record		
Surface String							
Prot. String							
Production String	5 1/2	15.5	0	T.D.			
Liner							

RUN: Run #1 **START: 2575.25ft**
DIR: UP **STOP: 1331.50ft**
DATE: 06/17/13 **RES: 0.25ft**
TIME: 08:24:19 **SCALE: 5"/100'**

Run #1



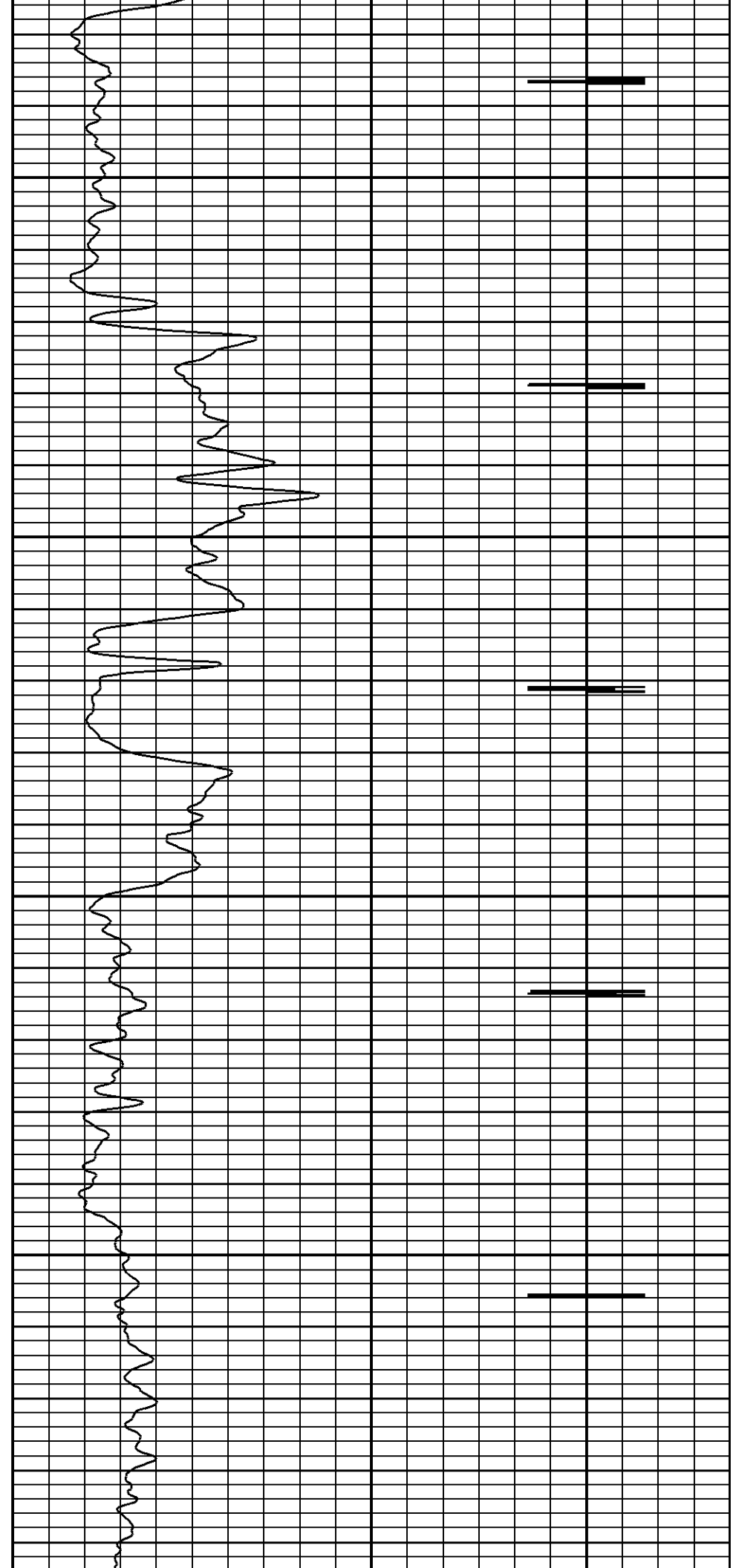


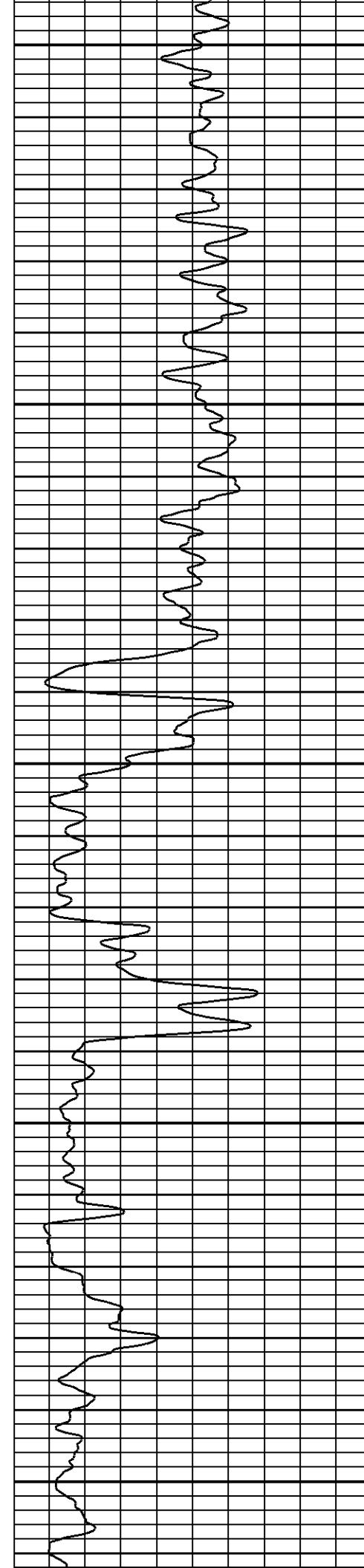
1400

1450

1500

1550





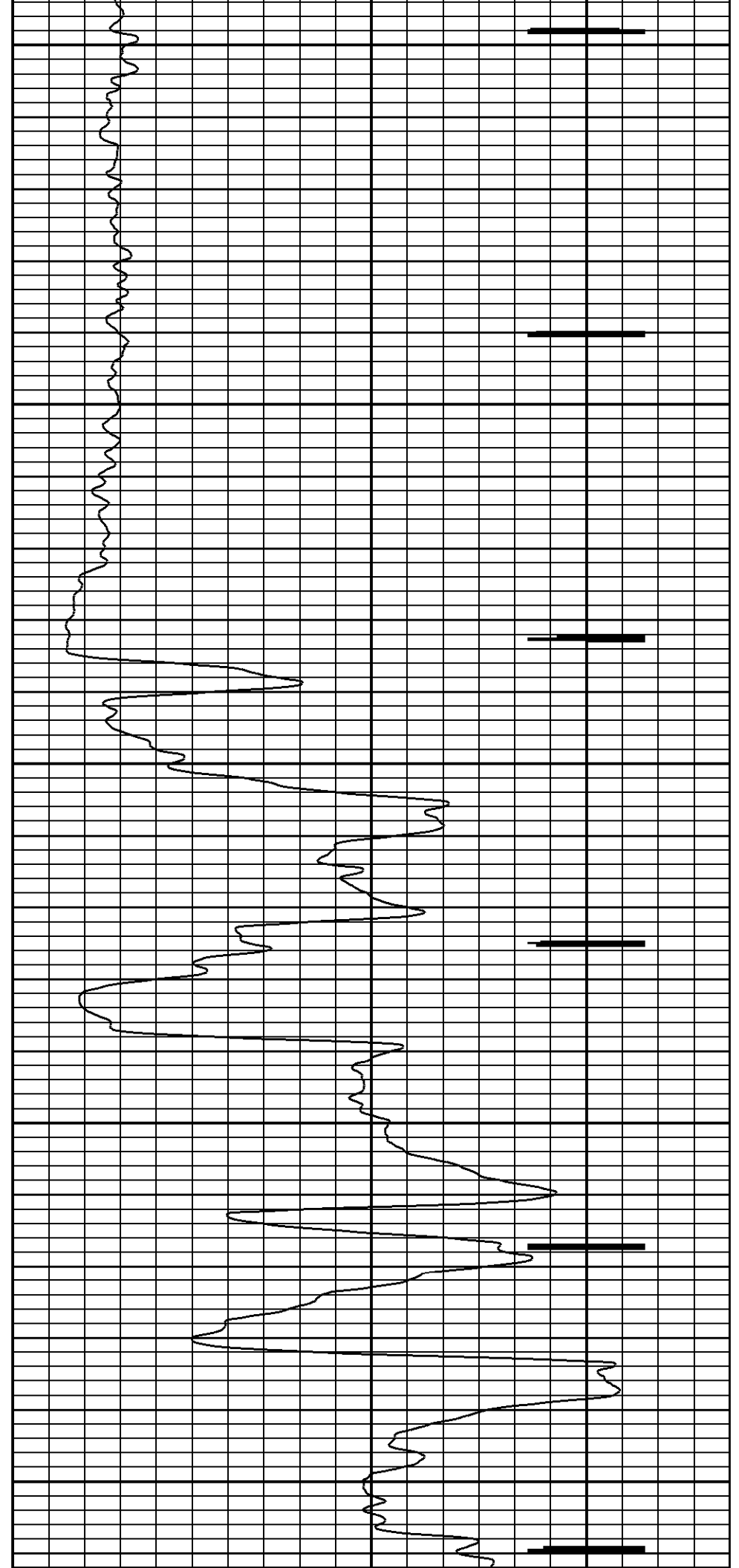
1600

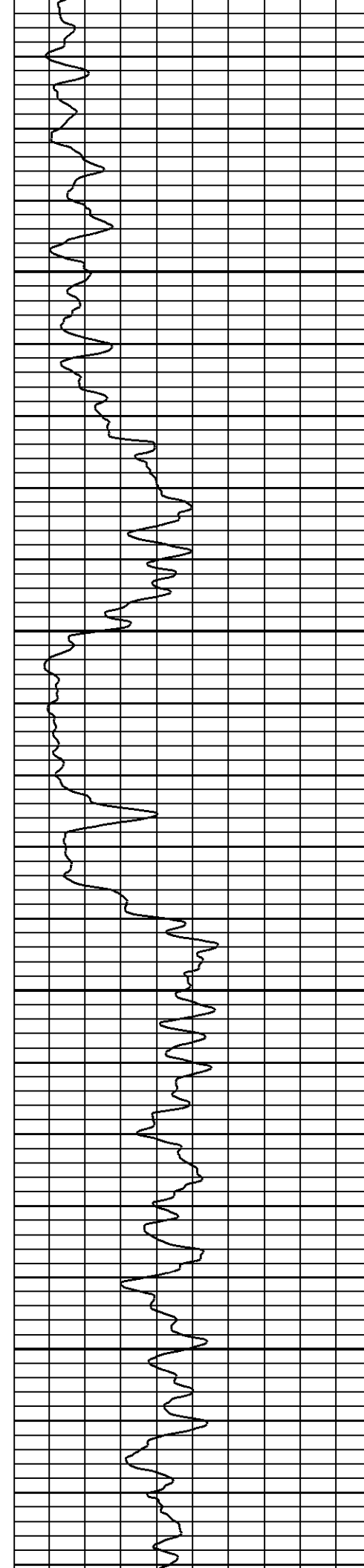
1650

1700

1750

1800



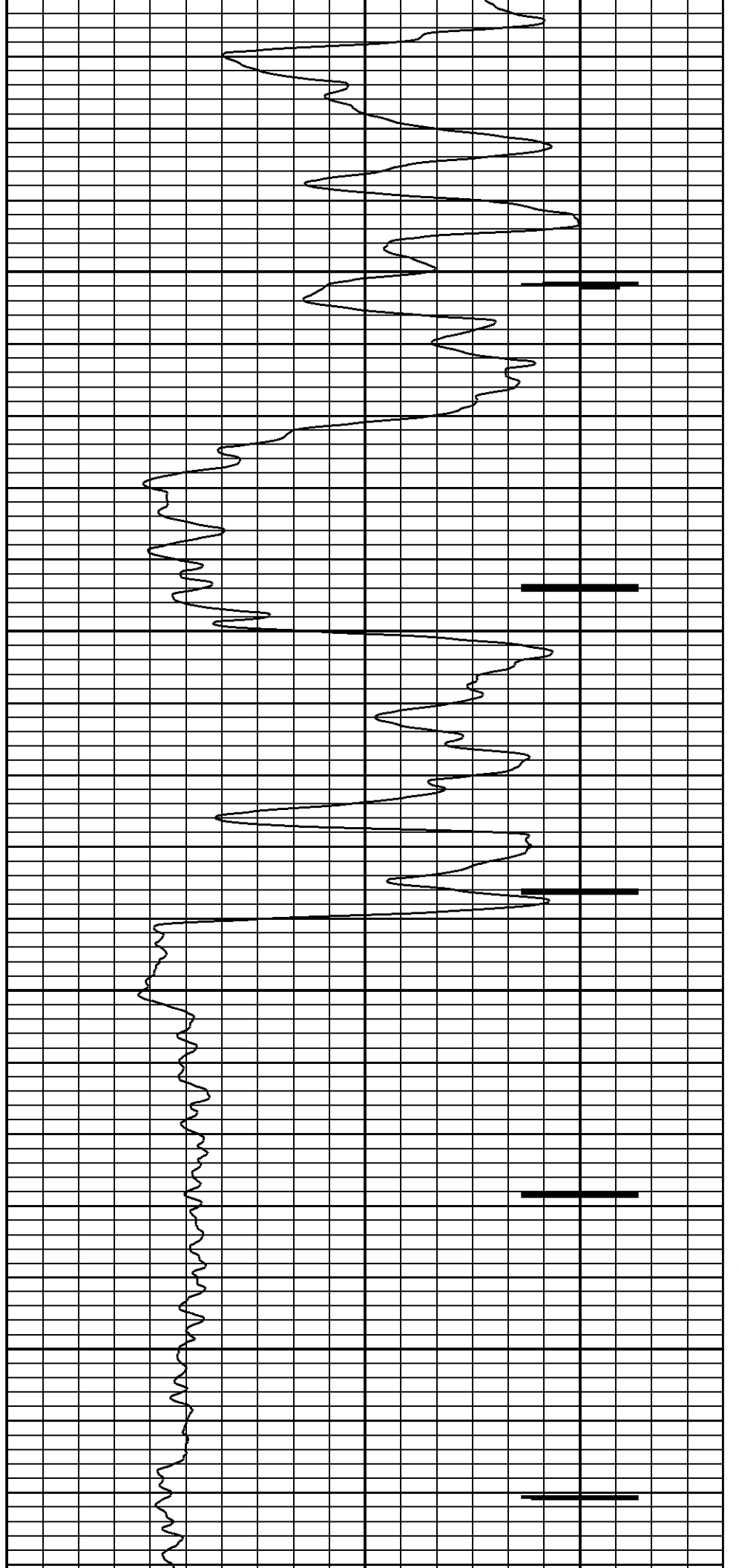


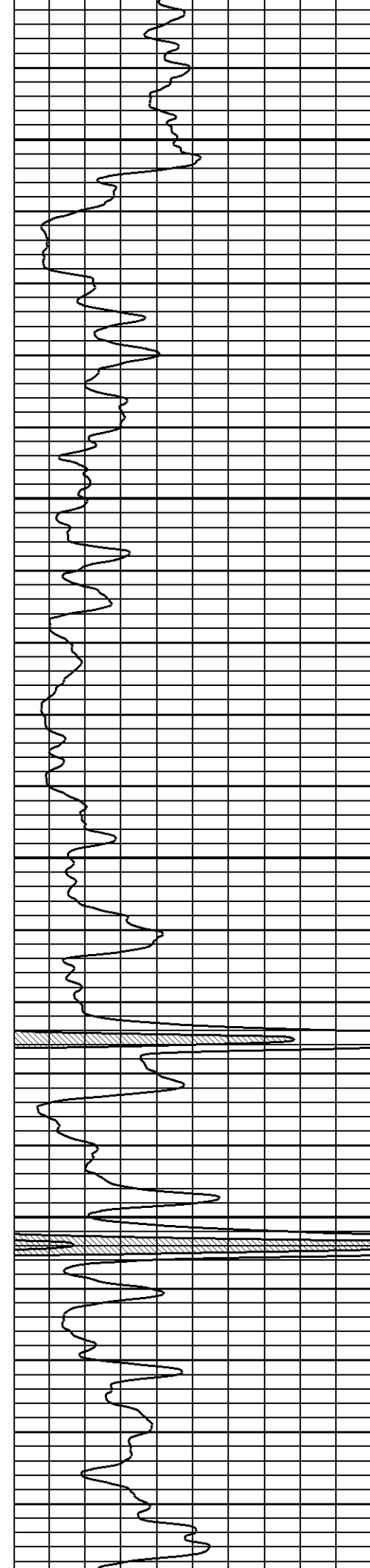
1850

1900

1950

2000



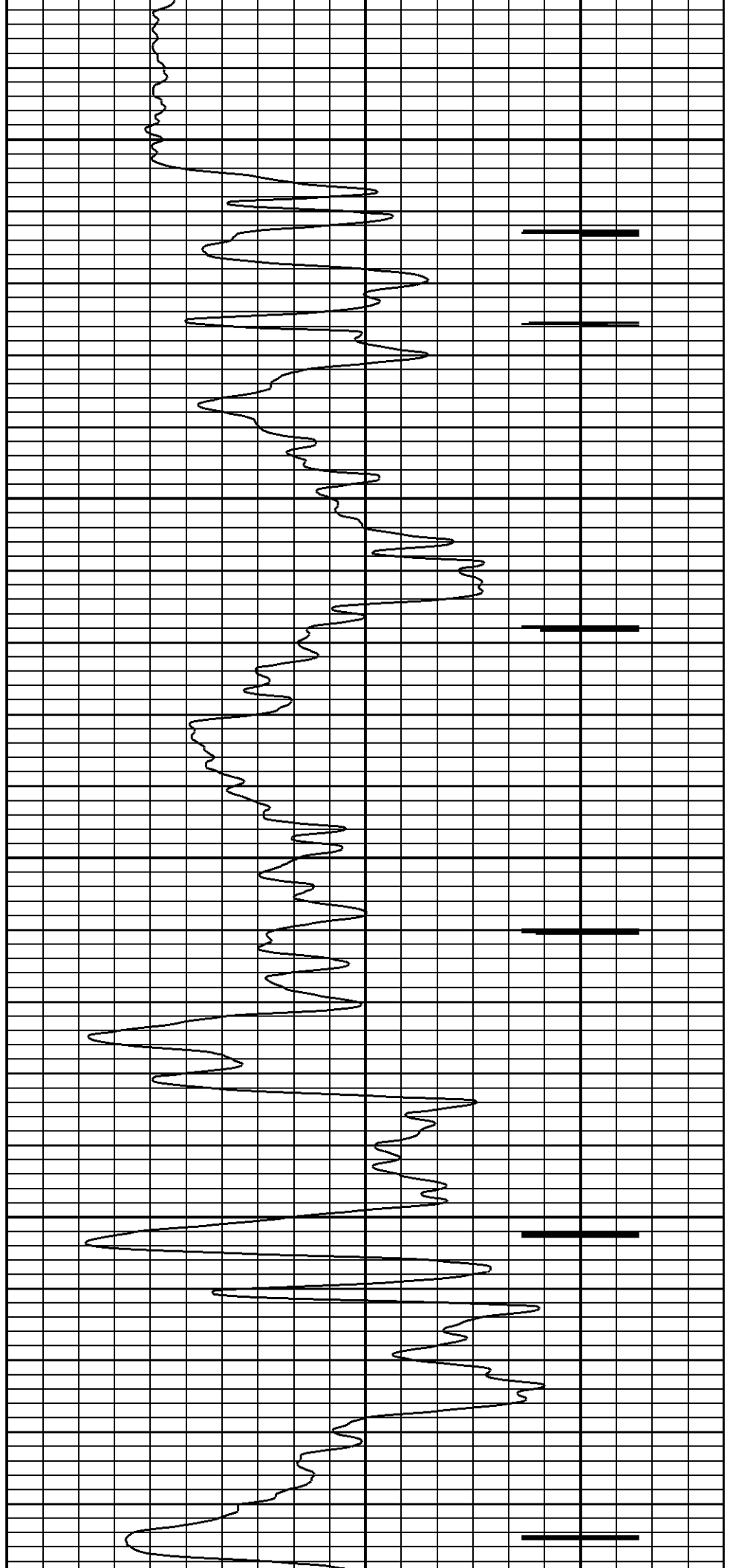


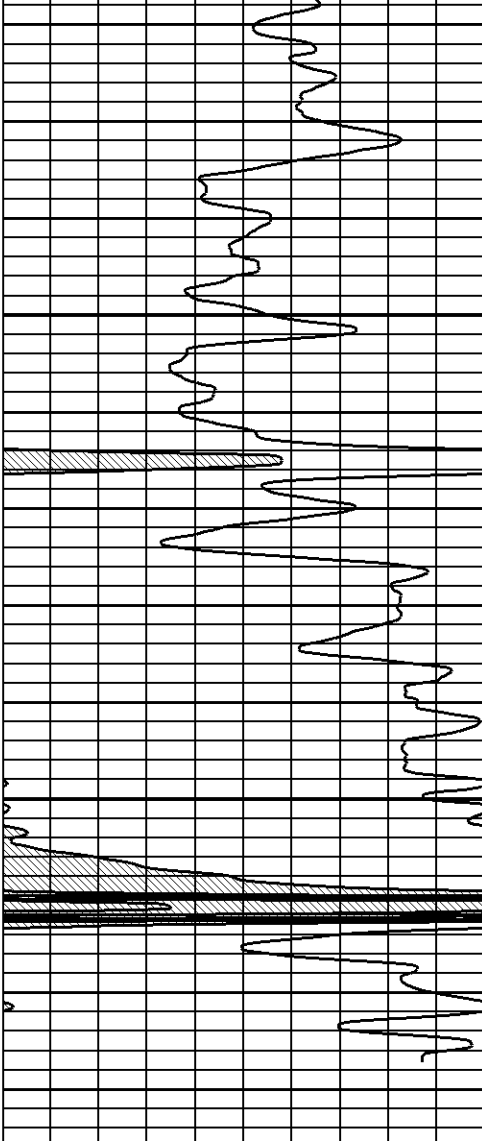
2050

2100

2150

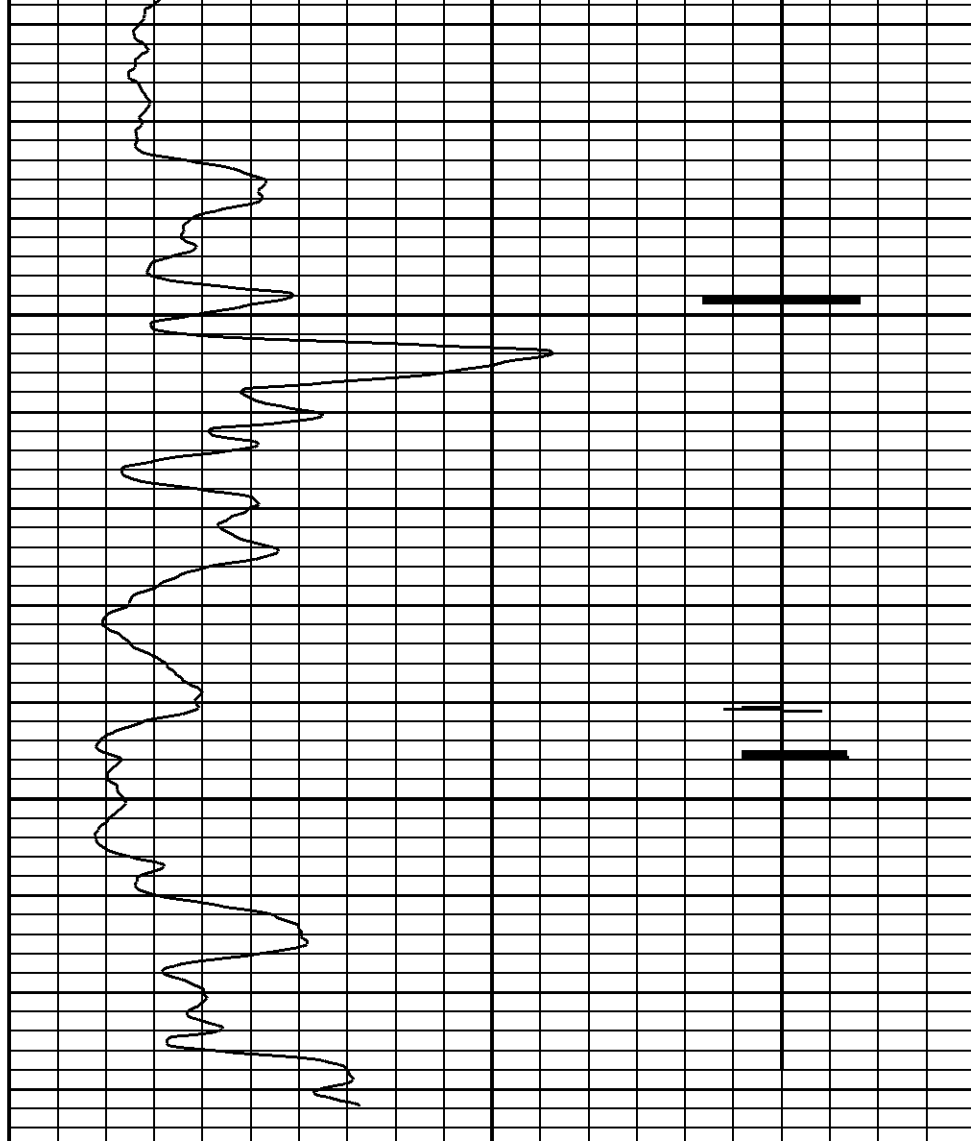
2200





2500

2550



CCL

0 100.0

GAMMA RAY

5 400

NEUTRON

RUN: Run #1
 DIR: UP
 DATE: 06/17/13
 TIME: 08:24:19

Run #1

START: 2575.25ft
 STOP: 1331.50ft
 RES: 0.25ft
 SCALE: 5"/100'

DYNA-LOG INC.

Company VESS OIL CORPORATION
 Well AUGUSTA UNIT 8-63
 Field AUGUSTA
 Country U.S.A. State/Prv KANSAS