



CHANUTE, KANSAS

**GAMMA RAY  
NEUTRON  
COMPLETION LOG**

Company **McFADDEN OIL CO.**  
Well **KOESTER #5A0**  
Field **MORAN**  
County **ALLEN** State **KANSAS**

Location: **5085 FSL & 2920 FEL**  
**NE NE NE NW**  
SEC 2 TWP 25S RGE 20E  
Permanent Datum **G.L.** Elevation **1091 FEET**  
Log Measured From **G.L.** Elevation **1091 FEET**  
Drilling Measured From **G.L.** Elevation **1091 FEET**

Date **7-15-2013**  
Run Number **1 NW**  
Depth Driller  
Depth Logger **888 Z'**

Top Log Interval **SURFACE**  
Bottom Logged Interval **FULL**  
Fluid Level

Type Fluid **WATER**  
Production Casings **2 7/8" @ 880.3'**  
Max. Recorded Temp  
Estimated Cement Top  
Calculated Cement Top  
Amount & Type Cement  
Amount & Type Admix  
Drilling Contractor **COMPANY TOOLS**  
Equipment Number **107**

Location  
Recorded By **UDEN, D.**  
Witnessed By **McFADDEN, L.**

<<< Fold Here >>>

All interpretations are opinions based on inferences from electrical or other measurements and we cannot and do not guarantee the accuracy or correctness of any interpretation, and we shall not, except in the case of gross or willful negligence on our part, be liable or responsible for any loss, costs, damages, or expenses incurred or sustained by anyone resulting from any interpretation made by any of our officers, agents or employees. These interpretations are also subject to our general terms and conditions set out in our current Price Schedule.

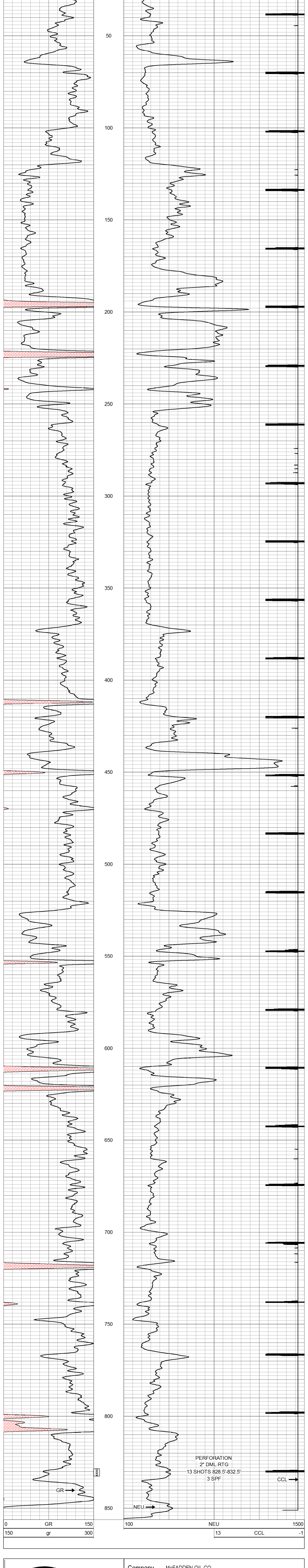
**Comments**

THANK YOU

Sensor	Offset (ft)	Schematic	Description	Len (ft)	OD (in)	WT (lb)
GR	7.59		GR-TITAN_169 (TIT169_001) Titan 1 11/16" Gamma Ray	4.75	1.69	20.00
CCL	5.05		CCL-TITAN_169 (TIT169) Titan 1 11/16" Logging CCL	1.83	1.69	7.50
NEU	0.63		NEU-TITAN_169 (TIT169_001) Titan 1 11/16" Neutron	4.33	1.69	20.00

Dataset: koester #5ao.db: field/well/run1/pass1  
Total Length: 10.92 ft  
Total Weight: 47.50 lb  
O.D.: 1.69 in

Database File: e:\koester #5ao.db  
Dataset Pathname: pass1  
Presentation Format: gr-n-ccl  
Dataset Creation: Mon Jul 15 10:57:41 2013 by Log Std Casedhole 07122  
Charted by:



Company **McFADDEN OIL CO.**  
Well **KOESTER #5A0**  
Field **MORAN**  
County **ALLEN** SEC. 2 TWP. 25S RGE. 20E  
State **KANSAS** Date **7-15-2013**