



**MIDWEST SURVEYS**  
 LOGGING - PERFORATING - CONSULTING SERVICES  
 P.O. Box 68, Osawatomie, KS 66064  
 913 / 755 - 2128

**GAMMA RAY / NEUTRON / CCL**

File No. Company **RJ Enterprises**  
 Well **Norman Unit No. 5-1**  
 Field **Davis - Bronson**  
 County **Allen** State **Kansas**

Location **2261' FSL & 1141' FEL**  
**SW-NW-NE-SE**

Sec. 3 Type 248 Rge. 21e Elevation NA  
 Permanent Datum GL  
 Log Measured From GL  
 Drilling Measured From GL

Date 05-13-2013  
 Run Number One  
 Depth Drier 716.0  
 Depth Logger 708.2  
 Bottom Logged Interval 20.0  
 Top Log Interval  
 Fluid Level Full

Type Fluid Water  
 Density / Viscosity NA  
 Salinity - PPM Cl NA  
 Max. Recorded Temp NA  
 Estimated Cement Top 0.0  
 Equipment No. Location 107 Osawatomie  
 Recorded By Steve Wandsch  
 Witnessed By Jason Kent

BORE-HOLE RECORD				CASING RECORD			
RUN	BIT	FROM	TO	SIZE	WGHT.	FROM	TO
One	9.875"	0.0	20.0	7.00"	17.0 #	0.0	20.0
Two	5.625"	20.0	716.0	2.875"	6.5 #	0.0	710.0

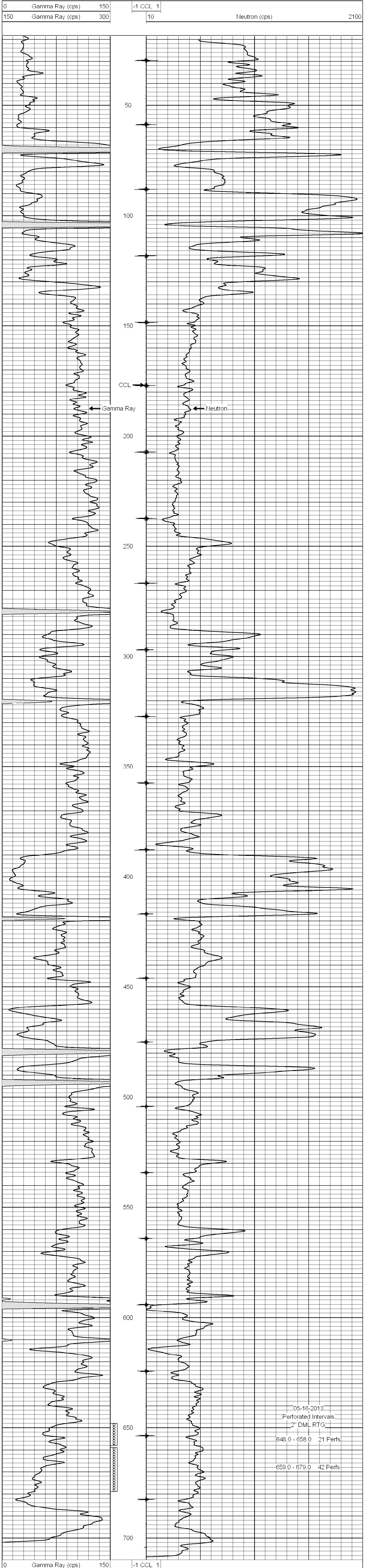
<<< Fold Here >>>

All interpretations are opinions based on inferences from electrical or other measurements and we cannot and do not guarantee the accuracy or correctness of any interpretation, and we shall not, except in the case of gross or willful negligence on our part, be liable or responsible for any loss, costs, damages, or expenses incurred or sustained by anyone resulting from any interpretation made by any of our officers, agents or employees. These interpretations are also subject to our general terms and conditions set out in our current Price Schedule.

Comments

Drilling Contractor :  
**RJ Enterprises**

Database File: norman5i.db  
 Dataset Pathname: pass1  
 Presentation Format: gr-n-ccl  
 Dataset Creation: Mon May 13 14:51:36 2013 by Log SCH 111116  
 Charted by: Depth in Feet scaled 1:240



05-16-2013  
 Perforated Intervals  
 2" DML RTG  
 648.0 - 658.0 21 Perfs  
 659.0 - 679.0 42 Perfs