



**MIDWEST SURVEYS**  
 LOGGING - PERFORATING - CONSULTING SERVICES  
 P.O. Box 68, Osawatomie, KS 66084  
 913 / 755 - 2128

**GAMMA RAY / NEUTRON / CCL**

File No. \_\_\_\_\_  
 Company **Colt Energy, LLC**  
 Well **Pendley No.-7**  
 Field **Big Sandy**  
 County **Woodson** State **Kansas**

Location **1860 FSL & 305 FEL**  
 NE-SE-NE-SE

Sec. 22 Twp. 28S Rge. 14E  
 Permanent Datum **GL** Elevation **921'**  
 Log Measured From **GL** K.B. **NA**  
 Drilling Measured From **GL** D.E. **NA**  
 G.L. **921'**

Date **10-18-2013**  
 Run Number **One**  
 Depth Driller **1448.0**  
 Depth Logger **1397.0**  
 Bottom Logged Interval **1386.0**  
 Top Log Interval **20.0**  
 Fluid Level **Full**

Type Fluid	Water				
Density / Viscosity	NA				
Salinity - PPM Cl	NA				
Max. Record Temp	NA				
Estimated Cement Top	0.0				
Equipment No.	107				
Location	Cambridge				
Recorded By	Steve Winkfish				
Witnessed By	John Arntman				
BOREHOLE RECORD					
NO	TO	SIZE	WGT	FROM	TO
One	40.0	8.625"	25.0#	0.0	40.0
Two	40.0	1448.0	4.507"	10.5#	1373.5
			Set	AI	1373.5

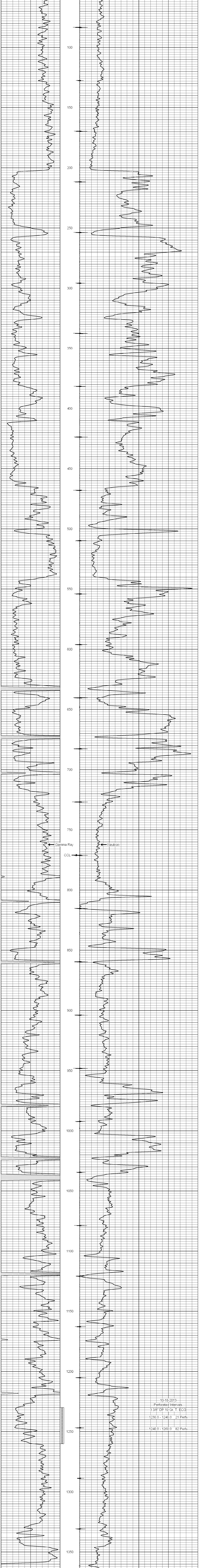
<<< Fold Here >>>

All interpretations are opinions based on inferences from electrical or other measurements and we cannot and do not guarantee the accuracy or correctness of any interpretation, and we shall not, except in the case of gross or willful negligence on our part, be liable or responsible for any loss, costs, damages, or expenses incurred or sustained by anyone resulting from any interpretation made by any of our officers, agents or employees. These interpretations are also subject to our general terms and conditions set out in our current Price Schedule.

**Comments**

Drilling Contractor :  
 Rig "6" Drilling

Database File: pendley7.db  
 Dataset Pathname: pass1  
 Presentation Format: gr-n-cc  
 Dataset Creation: Fri Oct 18 09:24:06 2013 by Log SCH 111116  
 Charted by: Depth in Feet scaled 1:240



10-18-2013  
 Perforated Intervals  
 3 3/8" DP 19 Gr. T. ECG  
 1230.0 - 1240.0 21 Perfs  
 1240.0 - 1260.0 82 Perfs