



MIDWEST SURVEYS
 LOGGING - PERFORATING - CONSULTING SERVICES
 P.O. Box 88, Osawatomie, KS 68084
 913 / 755 - 2128

GAMMA RAY / NEUTRON / CCL

File No. _____

Company **Colt Energy, Inc.**

Well **Pendley No -14**

Field **Big Sandy**

County **Woodson**

State **Kansas**

Location **2475 FSL & 605 FEL**

Location **NE-NE-NESE**

Other Services
Perforate

Sec. 22 Twp. 28S Rge. 14E Elevation

Permanent Datum GL 929

Log Measured From GL

Drilling Measured From GL 929

Date 10-20-2014

Run Number One

Depth Logger 1390.8

Bottom Logged Interval 1399.8

Top Log Interval 20.0

Fluid Level Full

Type Fluid Water

Density / Viscosity NA

Salinity - PPM Cl NA

Max Recorded Temp NA

Equipment Comment Top

Equipment No. 102

Location Osawatomie

Recorded By Gary Windish

Witnessed By John Arntman

BOREHOLE RECORD

CASING RECORD

Run No. BIT FROM TO

One 12.25' 42.5' 42.5'

Time 6.75' 42.5' 1408.0'

SIZE WGT FROM TO

8.50" 24.0# 0.0' 42.5'

4.50" 10.5# 0.0' 1373.9'

Bit No. Ser. AI

1399.9'

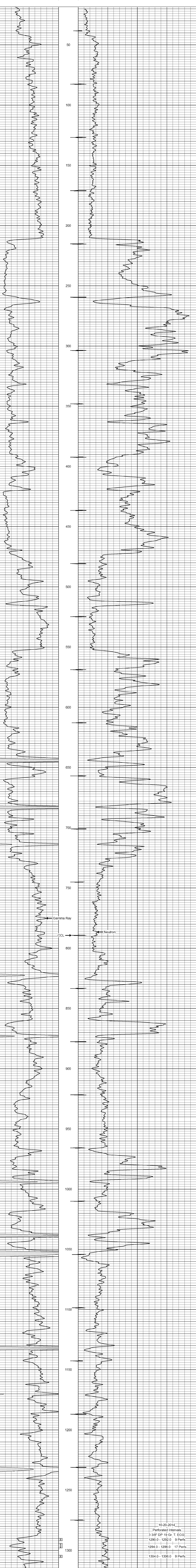
<<< Fold Here >>>

All interpretations are opinions based on inferences from electrical or other measurements and we cannot and do not guarantee the accuracy or correctness of any interpretation, and we shall not, except in the case of gross or willful negligence on our part, be liable or responsible for any loss, costs, damages, or expenses incurred or sustained by anyone resulting from any interpretation made by any of our officers, agents or employees. These interpretations are also subject to our general terms and conditions set out in our current Price Schedule.

Comments

Drilling Contractor :
Bar Drilling, LLC.

Database File: pendley14.db
 Dataset Pathname: pass1
 Presentation Format: gr-n-cl
 Dataset Creator: Mon Oct 20 14:54:30 2014 by Log SCH 111116
 Charted by: Depth in Feet scaled 1.240



10-20-2014
 Perforated Intervals
 3 3/8" DP 19 Gr. T. ECG
 1290.0 - 1292.0 9 Perfs
 1294.0 - 1296.0 17 Perfs
 1304.0 - 1306.0 9 Perfs