



Pioneer Energy Services

Sonic Cement Bond Log

15-203-20191-00-00

Company **SDOCO, LLC.**
 Well **Rees Ranch No. 7-19**
 Field **Wildcat**
 County **Wichita** State **Kansas**

Location **1320' FNL & 1735' FEL
W2-E2-W2-NE**

Sec: **19** Twp: **19S** Rge: **35W**

Permanent Datum **Ground Level** Elevation **3177**
 Log Measured From **Kelly Bushing** 11 Ft. Above Perm. Datum
 Drilling Measured From **Kelly Bushing**

Other Services
Perforate
Elevation
K.B. 3188
D.F. 3187
G.L. 3177

Run Number	One	
Date Survey	10/23/2012	
Date Cementing	10/14/2012	
Type Cementing Operation	Primary	
Depth Driller	5265	
Depth Logger	4771	
Logged Interval	4769 to 2650	to
Casing Driller	5.5 @ T.D.	@
Float Collar -- D.V. Tool		2850
Squeeze Depth		
Amount & Type Cement		
Amount & Type Admix		
Type Fluid In Hole	Water	
Fluid Level	500	
Salinity PPM CL		
Weight lb/gal -- Vis.		
Approx. Logged Cement Top		
Calculated Cement Top		
Max. Hole Temperature	117	
Tool No.	D-1	
Spacing Recorded	3-5	
Equipment -- Location	72 Hays	
Recorded By	K. Ladrigan	
Witnessed By	Ray Bivens	

<<< Fold Here >>>

All interpretations are opinions based on inferences from electrical or other measurements and we cannot and do not guarantee the accuracy or correctness of any interpretation, and we shall not, except in the case of gross or willful negligence on our part, be liable or responsible for any loss, costs, damages, or expenses incurred or sustained by anyone resulting from any interpretation made by any of our officers, agents or employees. These interpretations are also subject to our general terms and conditions set out in our current Price Schedule.

Comments

Thank you for using Pioneer Energy Services, Inc. 785.625.3858

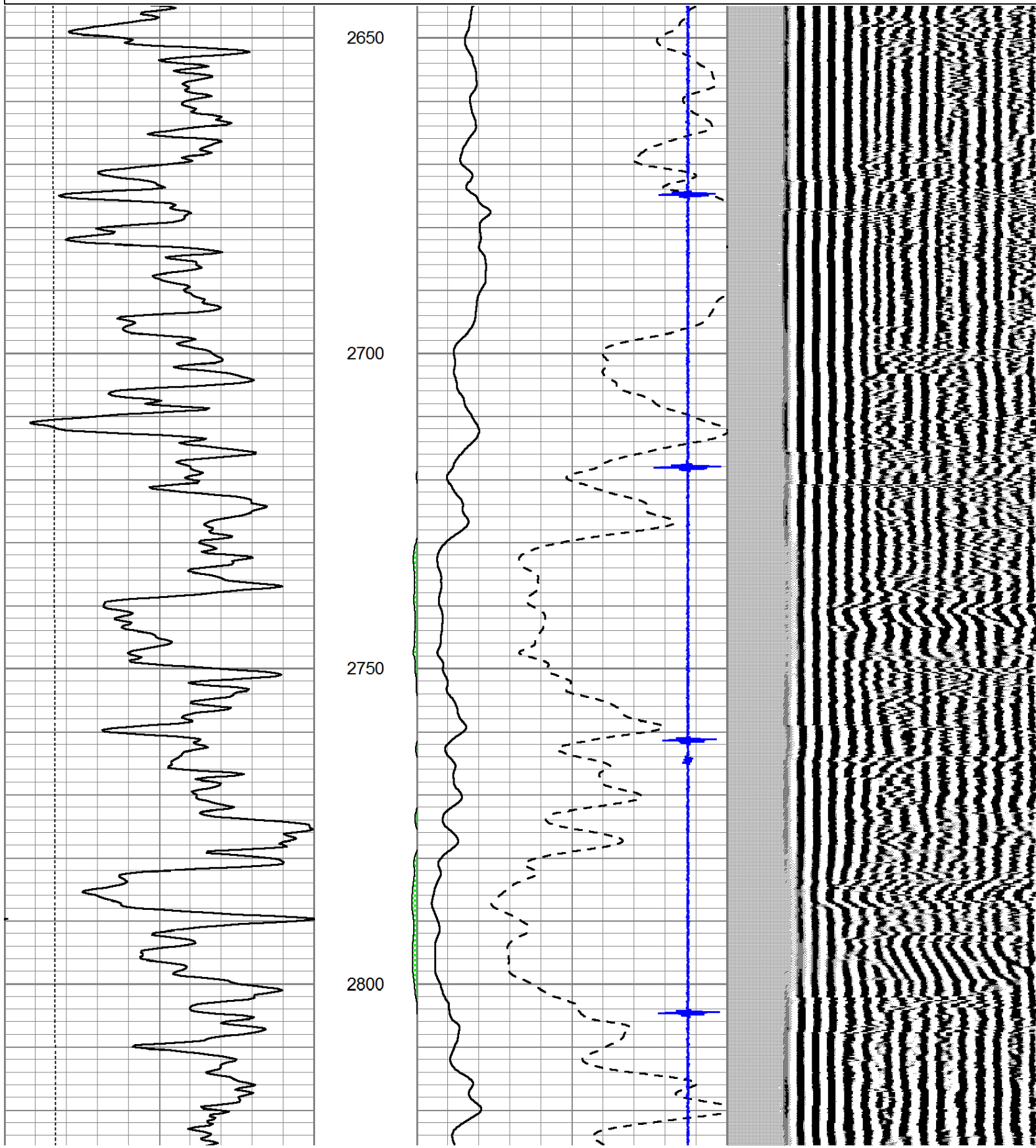
Marienthal, KS., 6 South on 20 Road
Southwest Into.

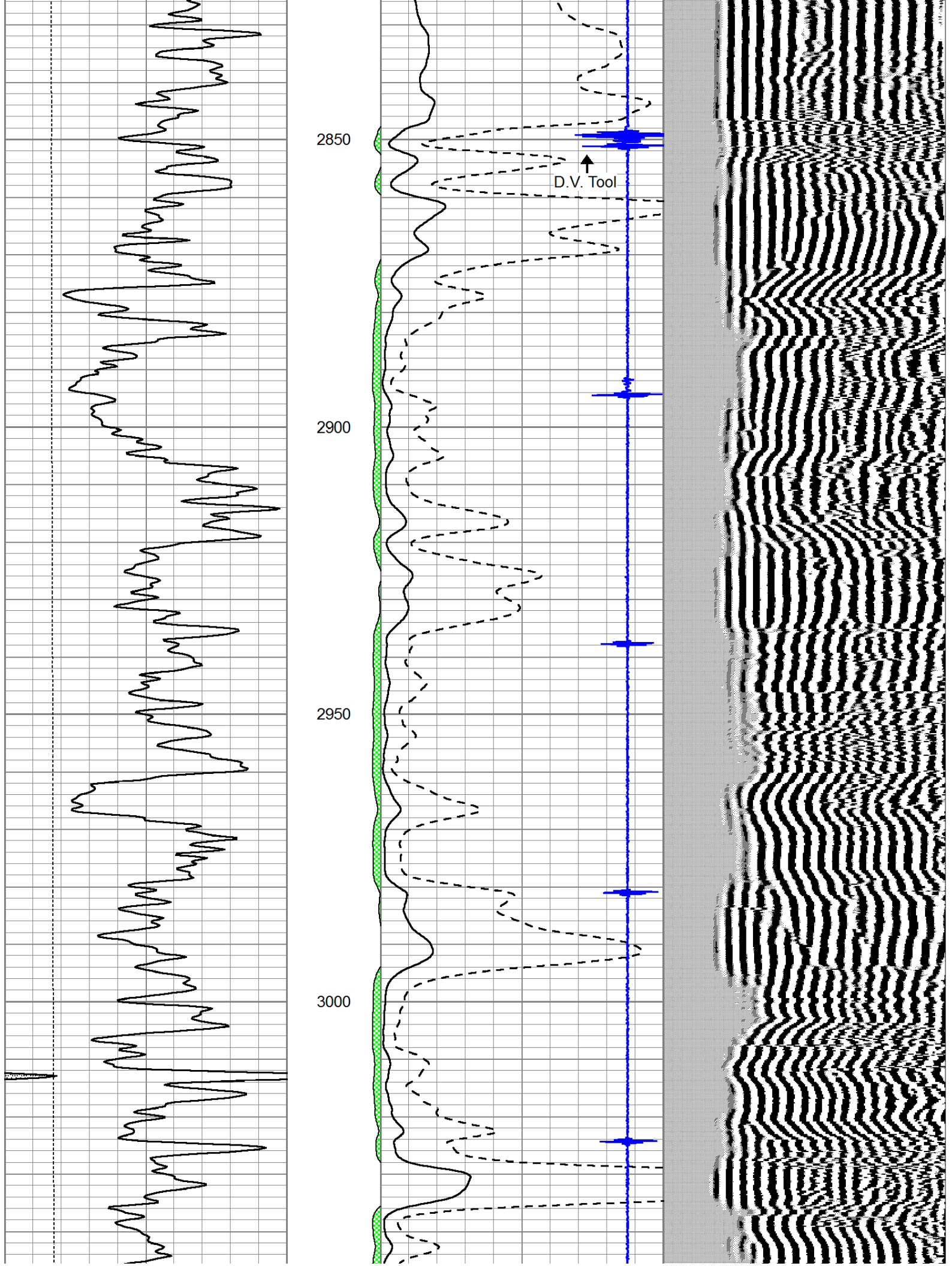


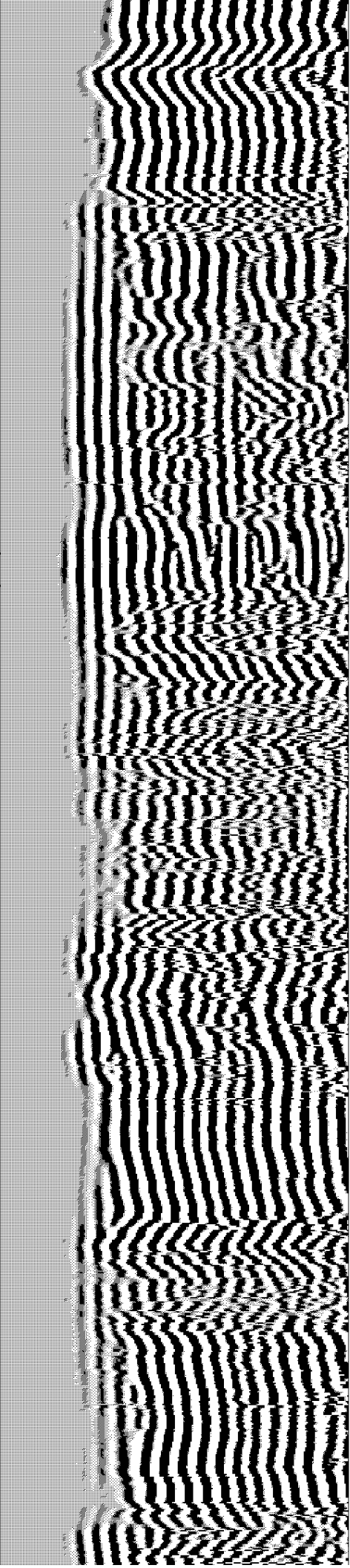
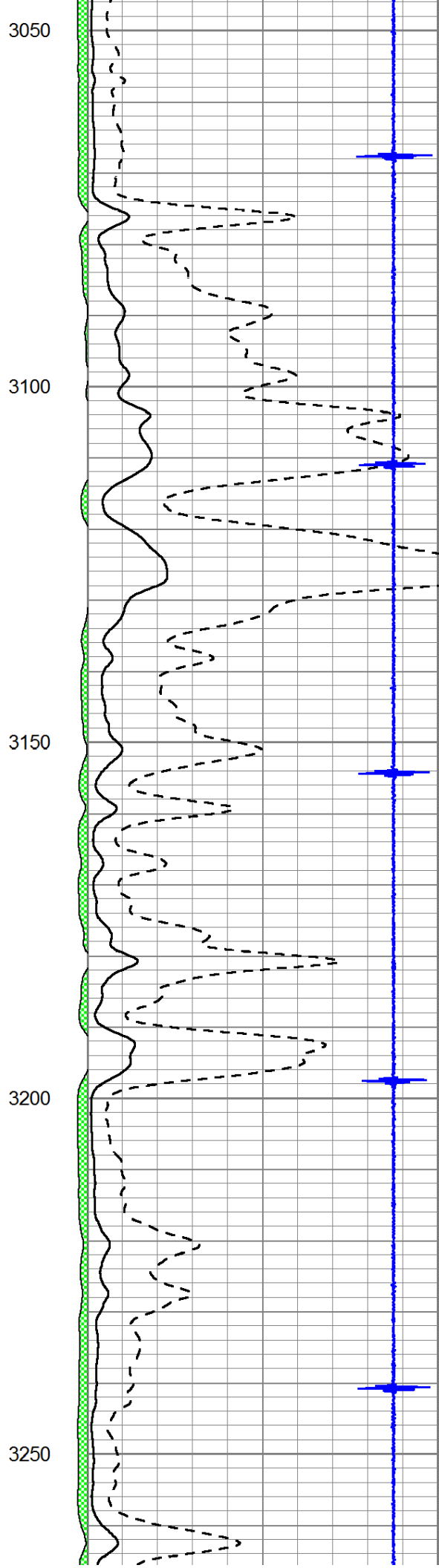
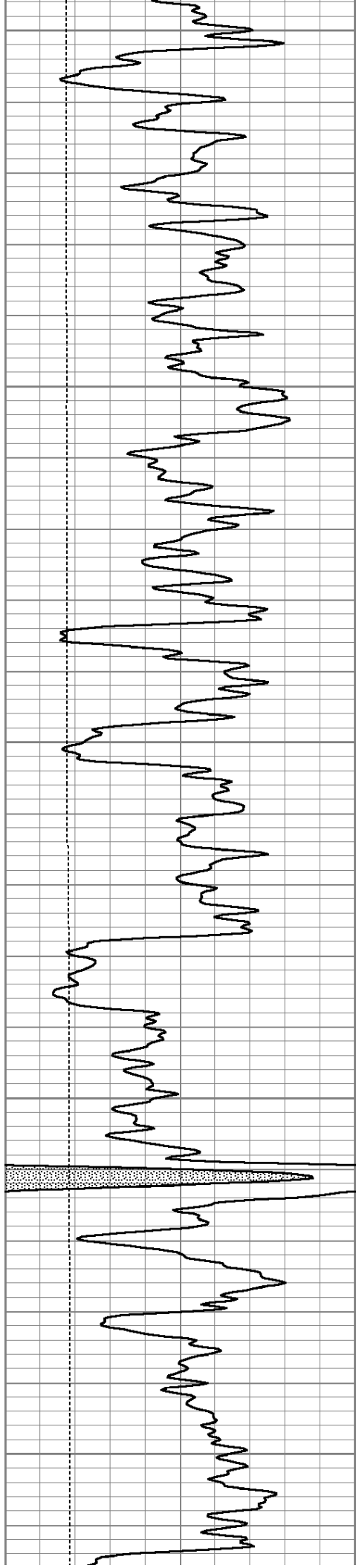
Main Pass

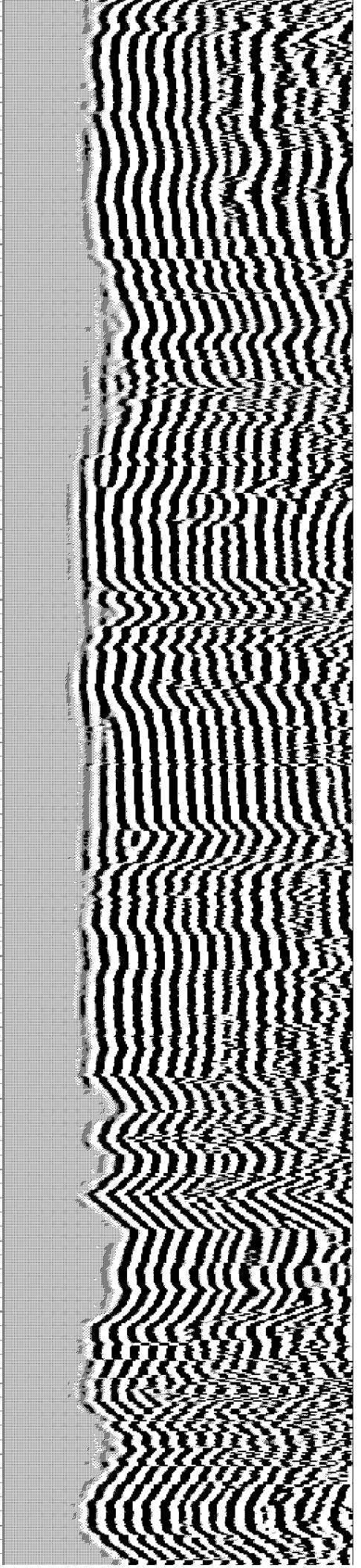
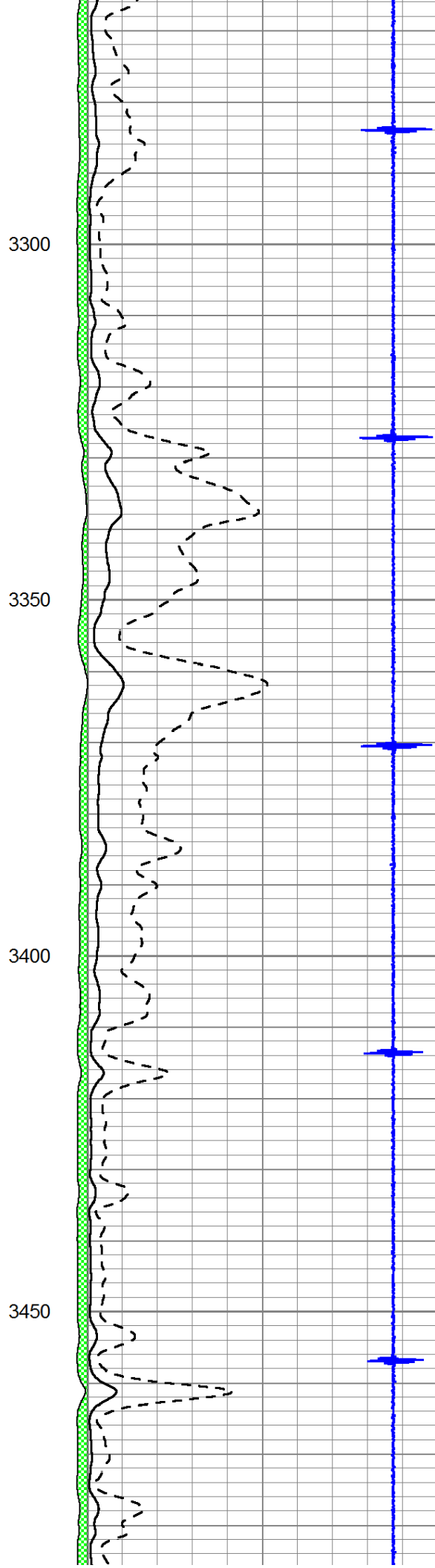
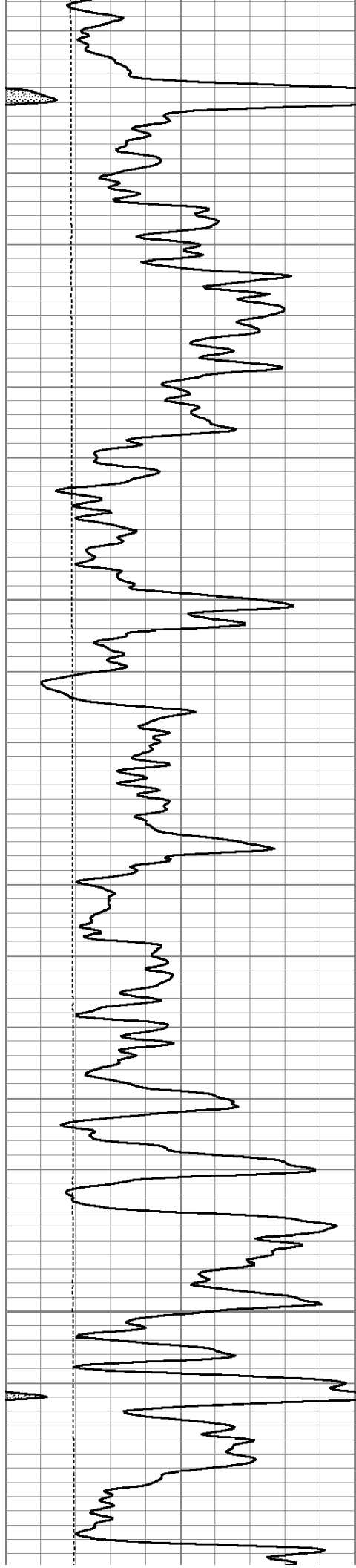
Database File: sdoco-reesranch7-19.db
 Dataset Pathname: ReesRanch/grcbl/pass3
 Presentation Format: cldig
 Dataset Creation: Tue Oct 23 11:29:57 2012 by Log SCH 111116
 Charted by: Depth in Feet scaled 1:240

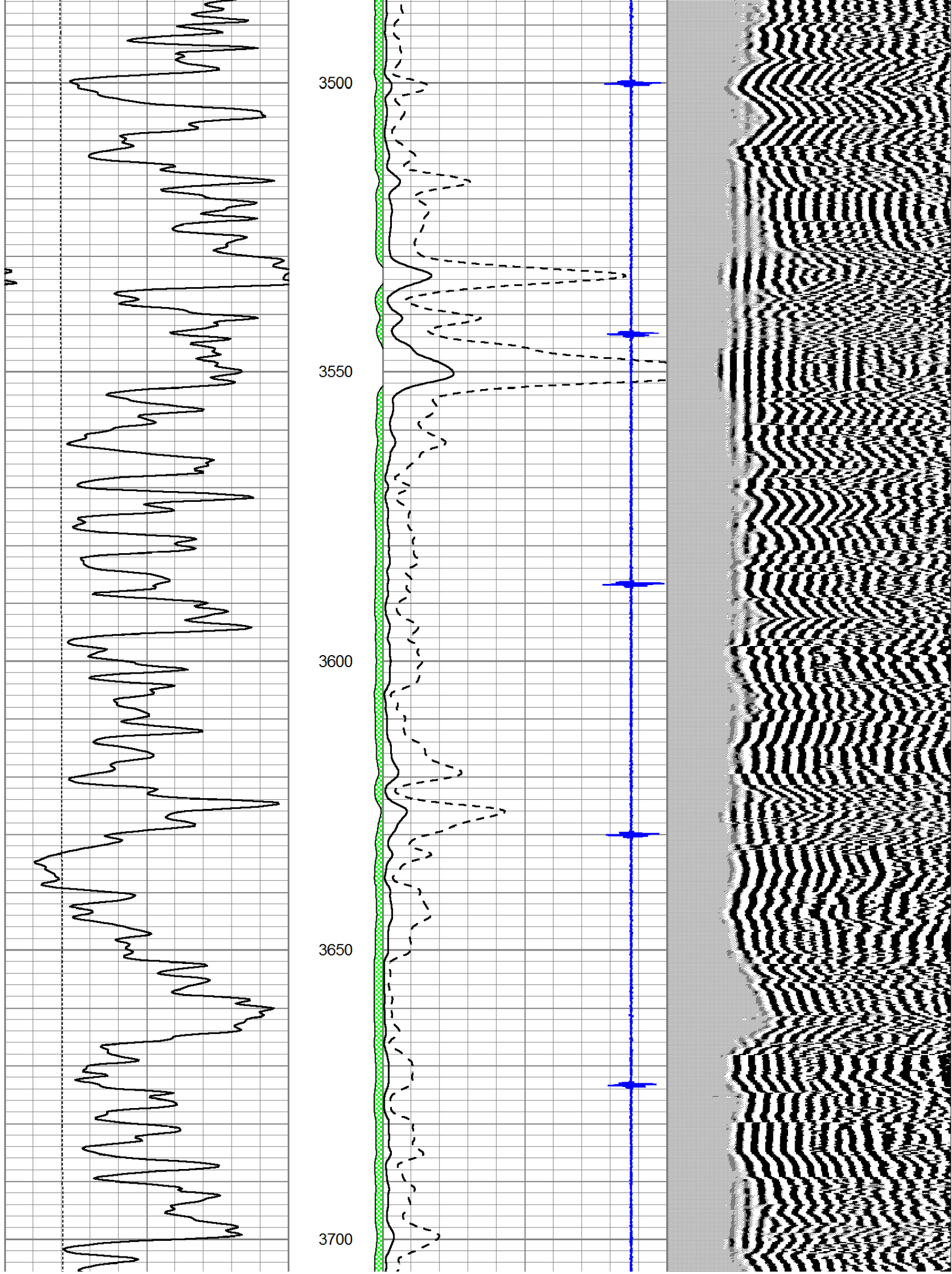
0	GR (GAPI)	150	AMP3	0	Amplitude (mV)	100	200	Variable Density	1200
0	LTEN (lb)	5000	(mV)	0	Amplified Amplitude (mV)	20			
			-100 10	7	Collar Locator	-1			

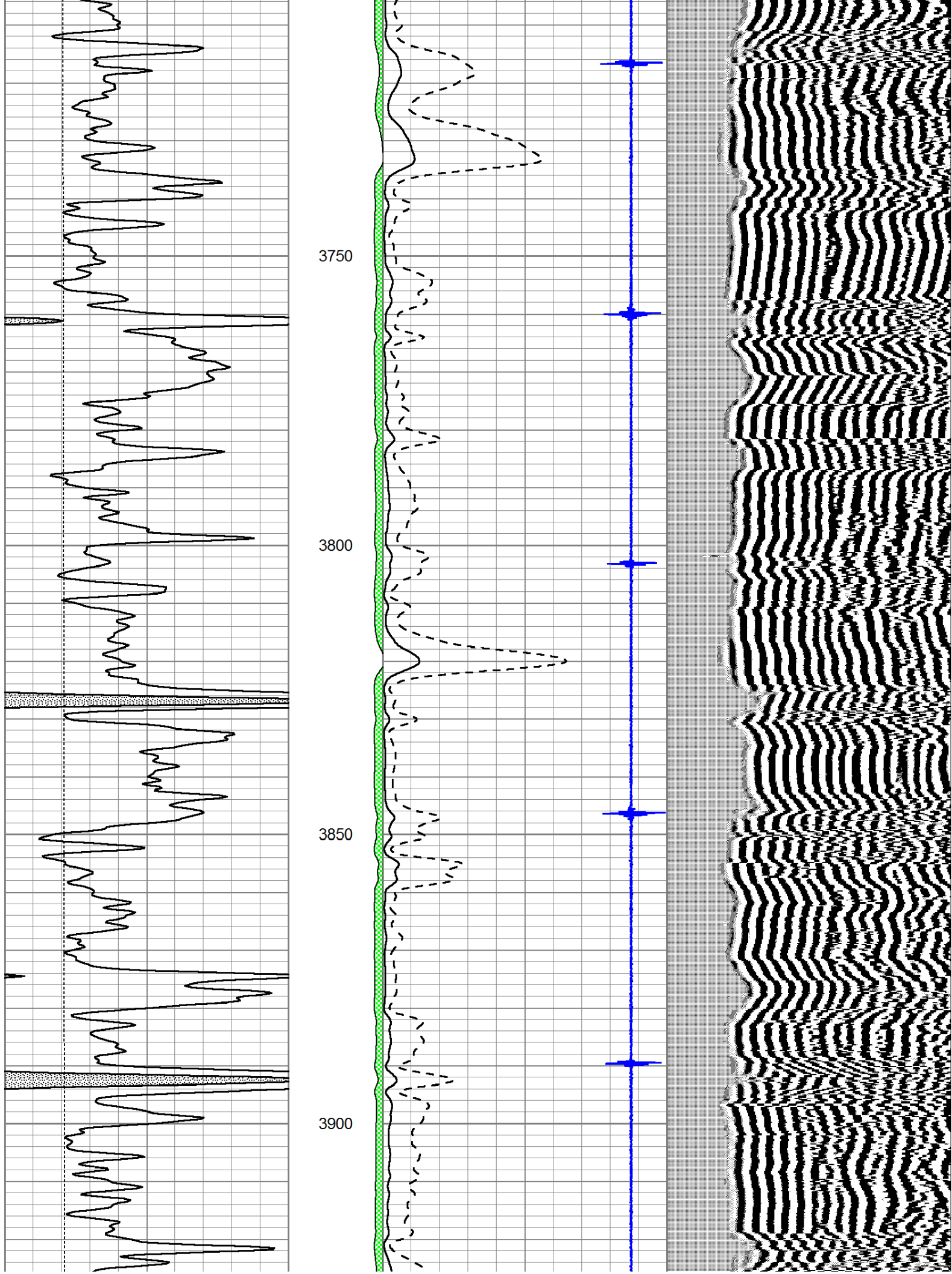


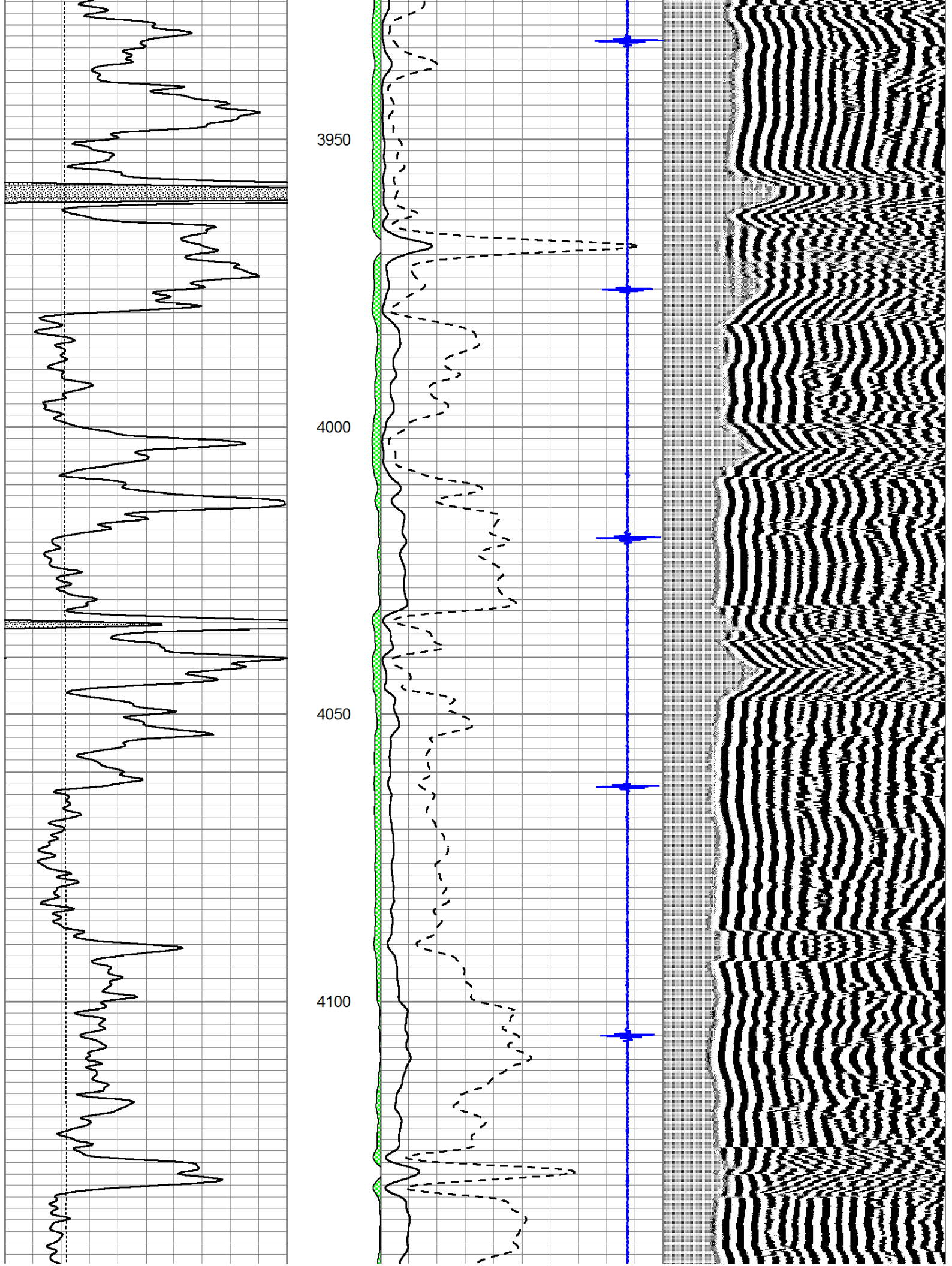


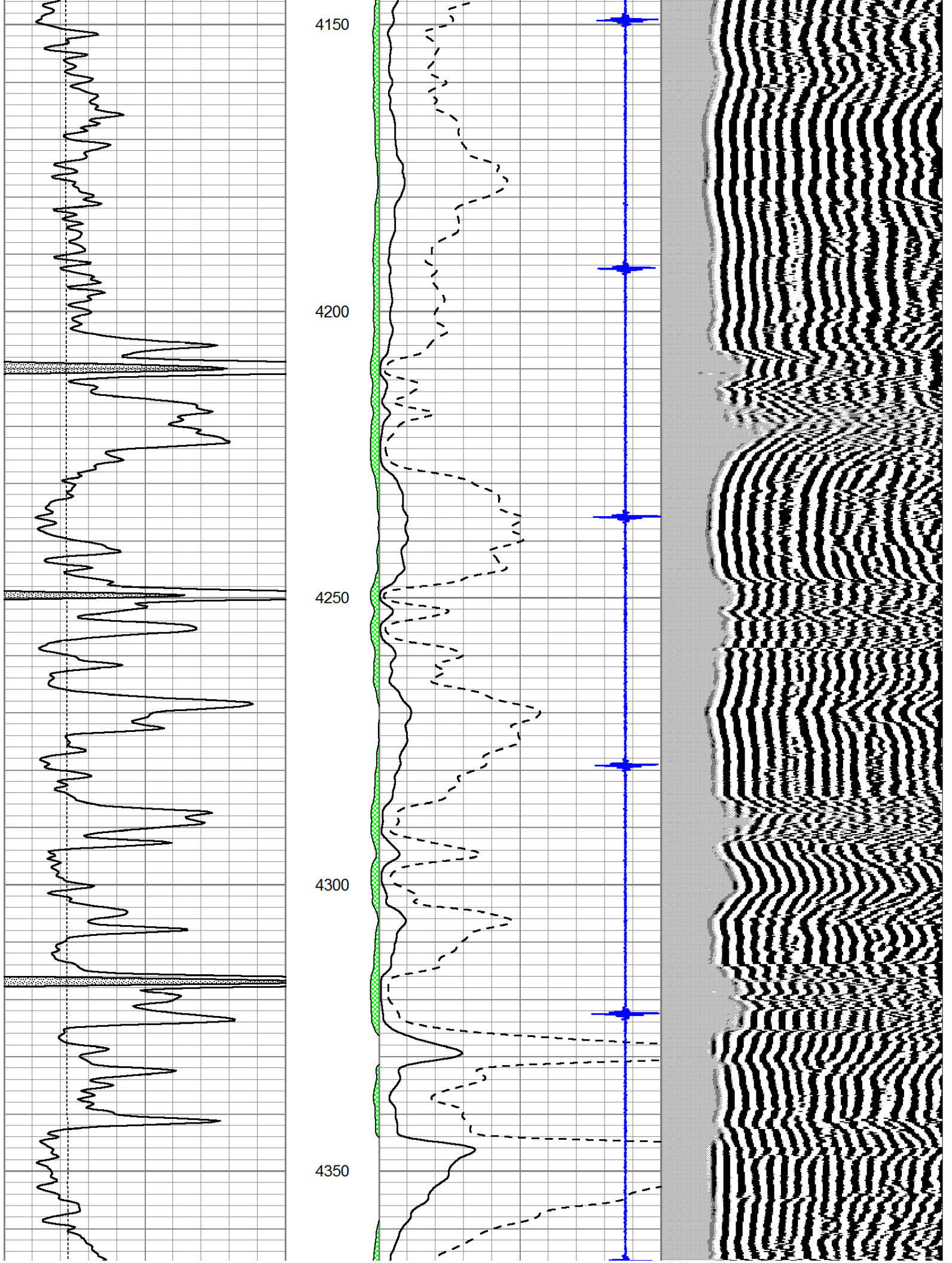


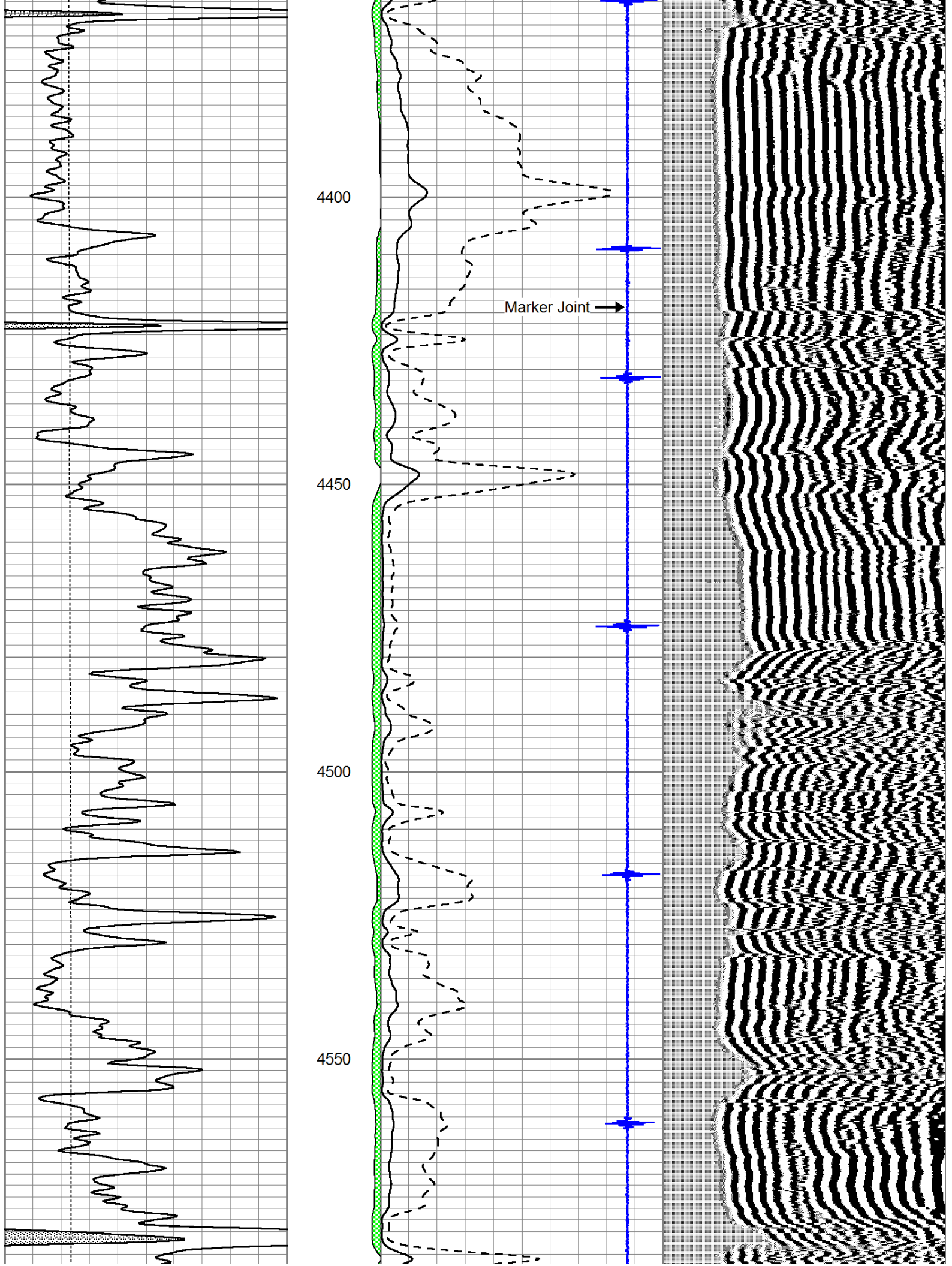


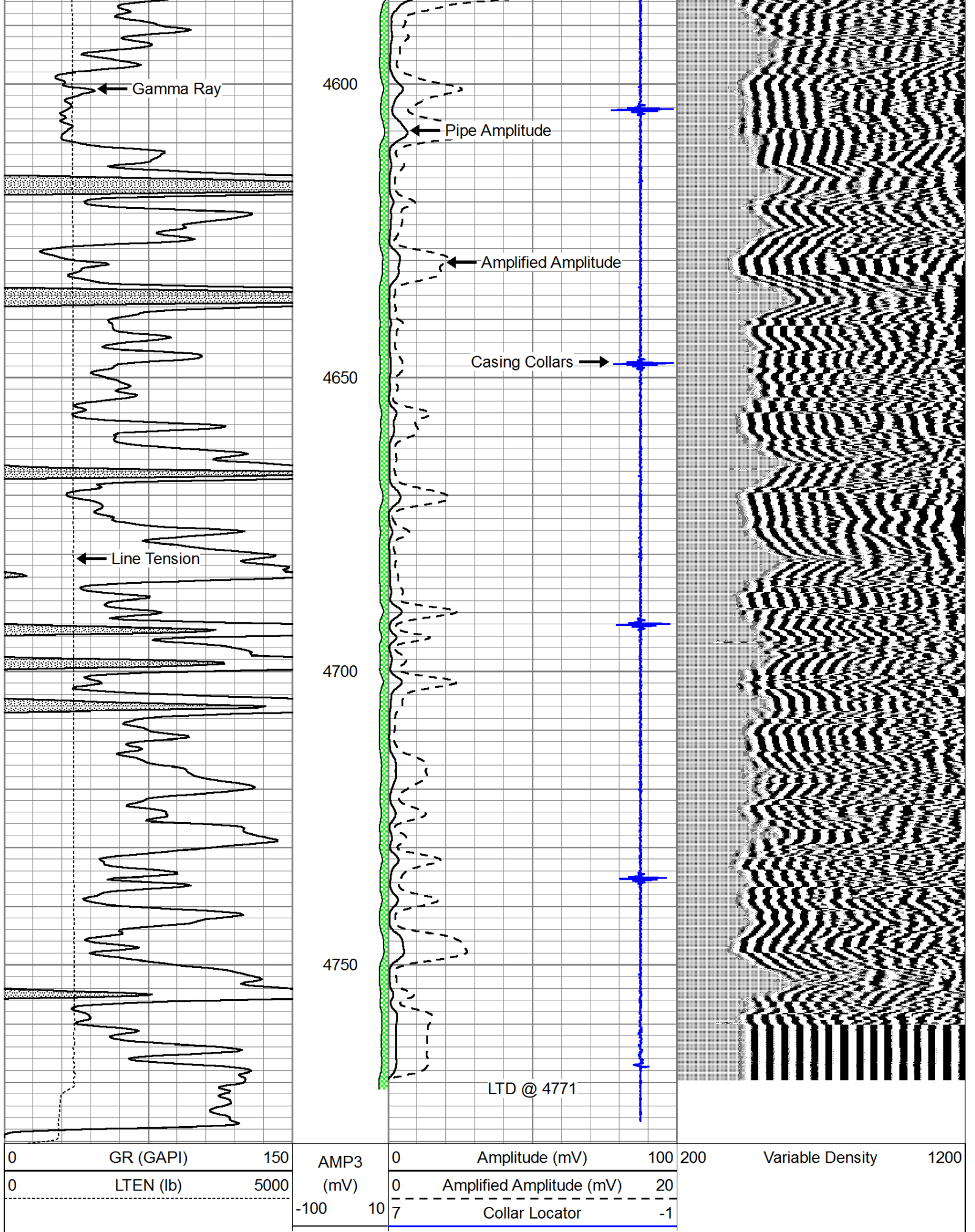










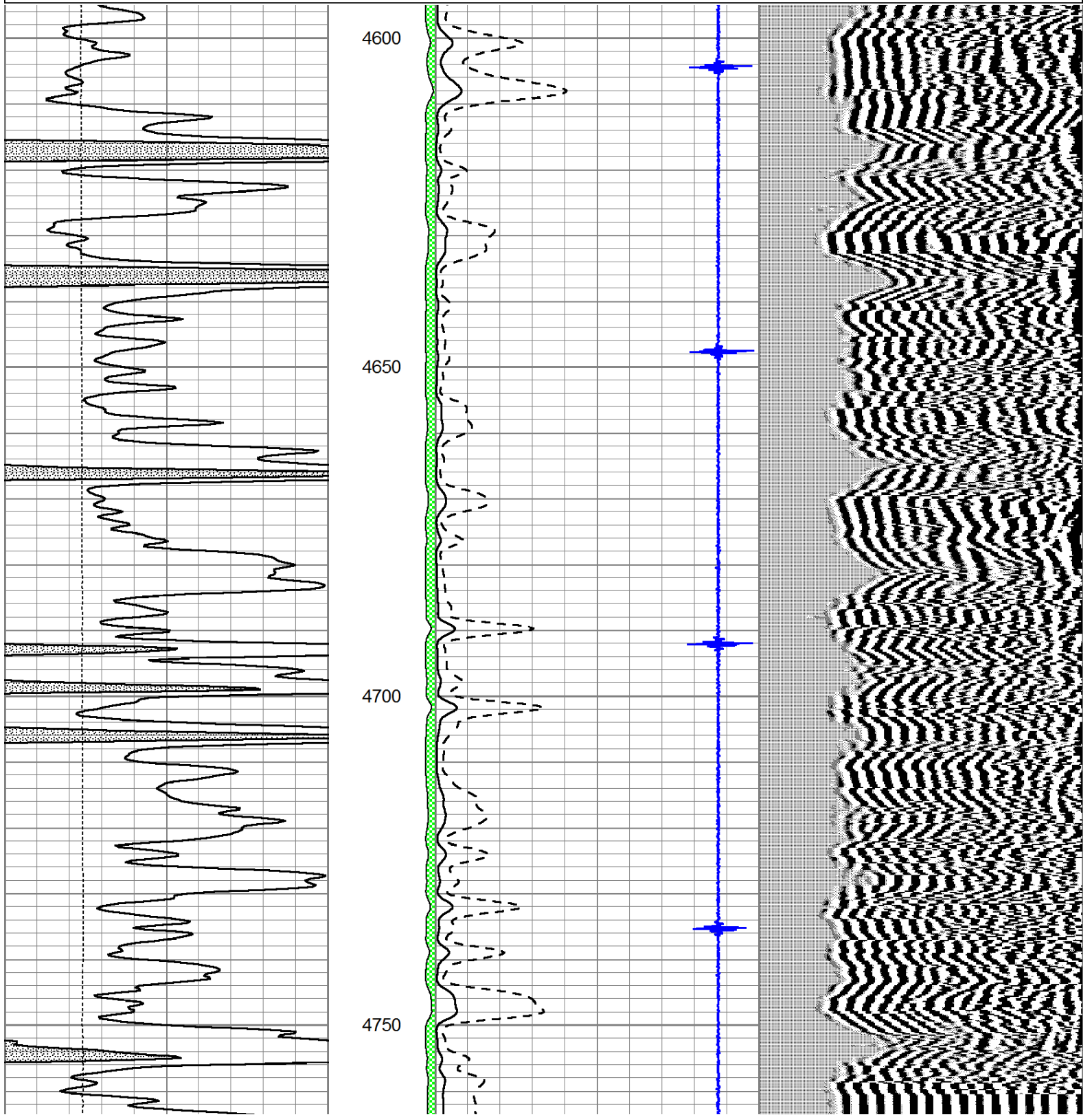


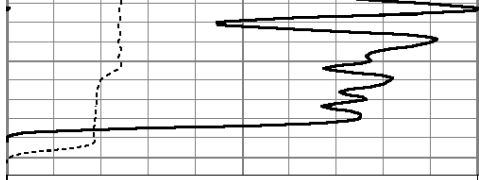
Repeat Section

Pioneer Energy Services

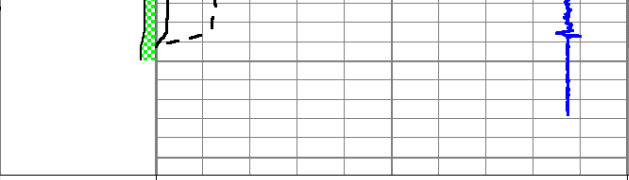
Database File: sdoco-reesranch7-19.db
 Dataset Pathname: ReesRanch/grcbl/pass2
 Presentation Format: cldig
 Dataset Creation: Tue Oct 23 11:25:50 2012 by Log SCH 111116
 Charted by: Depth in Feet scaled 1:240

0	GR (GAPI)	150	AMP3	0	Amplitude (mV)	100	200	Variable Density	1200
0	LLEN (lb)	5000	(mV)	0	Amplified Amplitude (mV)	20			
			-100 10	7	Collar Locator	-1			





0	GR (GAPI)	150
0	LTEN (lb)	5000



AMP3	0	Amplitude (mV)	100
(mV)	0	Amplified Amplitude (mV)	20



200	Variable Density	1200
-----	------------------	------

-100	10
------	----

7	Collar Locator	-1
---	----------------	----