



**COMPLETION
& PRODUCTION
SERVICES CO.**

**MICRO
LOG**

Company L.D. DRILLING, INC.
Well FB #1-21
Field WILDCAT
County BARTON State KANSAS

Company L.D. DRILLING, INC.
Well FB #1-21
Field WILDCAT
County BARTON
State KANSAS

Location: API #: 15-009-25826-00-00
633' FNL & 460' FEL
SW - NE - NE - NE
SEC 21 TWP 18S RGE 14W
Permanent Datum GROUND LEVEL Elevation 1926
Log Measured From KELLY BUSHING 5' A.G.L.
Drilling Measured From KELLY BUSHING
Other Services
CNL/CDL
DIL/SONIC
Elevation
K.B. 1931
D.F. 1929
G.L. 1926

Date	4/11/13		
Run Number	TWMO		
Depth Driller	3550		
Depth Logger	3552		
Bottom Logged Interval	3550		
Top Log Interval	2800		
Casing Driller	892		
Casing Logger	894		
Bit Size	7.875		
Type Fluid in Hole	CHEMICAL MUD		
Density / Viscosity	9.5 / 59	CHLORIDES 7.000	
pH / Fluid Loss	8.5 / 9.2		
Source of Sample	FLOWLINE		
Rim @ Meas. Temp	0.70 @ 78F		
Rmf @ Meas. Temp	0.53 @ 78F		
Rmc @ Meas. Temp	0.84 @ 78F		
Source of Rmf / Rmc	MEASURED		
Rim @ BHT	0.49 @ 112F		
Time Circulation Stopped	2 HOURS		
Time Logger on Bottom			
Maximum Recorded Temperature	112F		
Equipment Number	860		
Location	HAYS, KS.		
Recorded By	IAN MABB		
Witnessed By	KIM SHOEMAKER		

<<< Fold Here >>>

All interpretations are opinions based on inferences from electrical or other measurements and we cannot and do not guarantee the accuracy or correctness of any interpretation, and we shall not, except in the case of gross or willful negligence on our part, be liable or responsible for any loss, costs, damages, or expenses incurred or sustained by anyone resulting from any interpretation made by any of our officers, agents or employees. These interpretations are also subject to our general terms and conditions set out in our current Price Schedule.

Comments

**NABORS COMPLETION & PRODUCTION CO.
785-628-6395
THANK YOU FOR YOUR BUSINESS**

DIRECTIONS: HWY 281 & HWY 4 - 3 1/2 MILES SOUTH ON BOYD BLACKTOP TO RD. 80 - 1 WEST - 1/4 SOUTH - WEST INTO

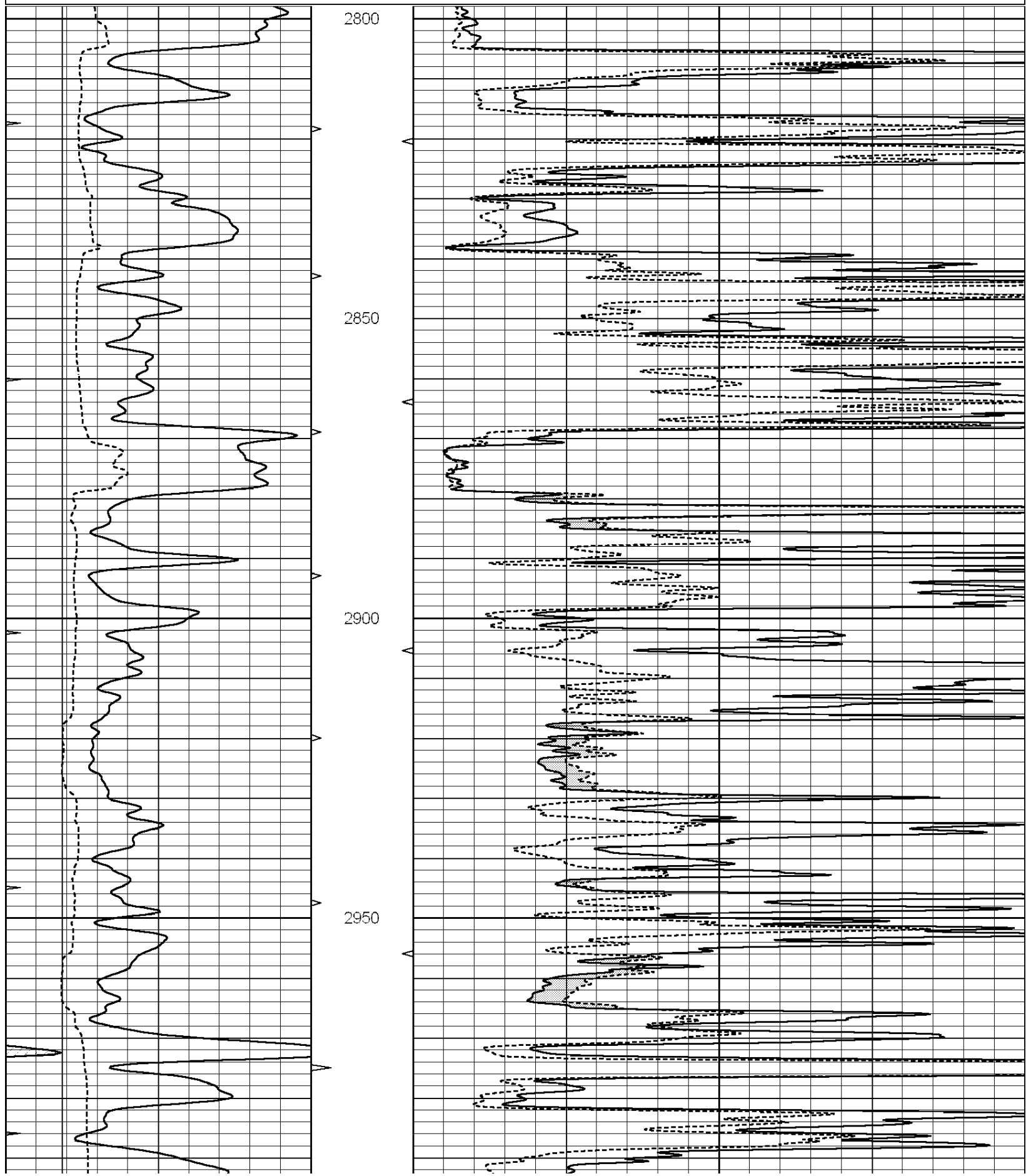
Database File: 010983ddn.db
Dataset Pathname: pass13.4.2
Presentation Format: _micro
Dataset Creation: Thu Apr 11 23:45:48 2013

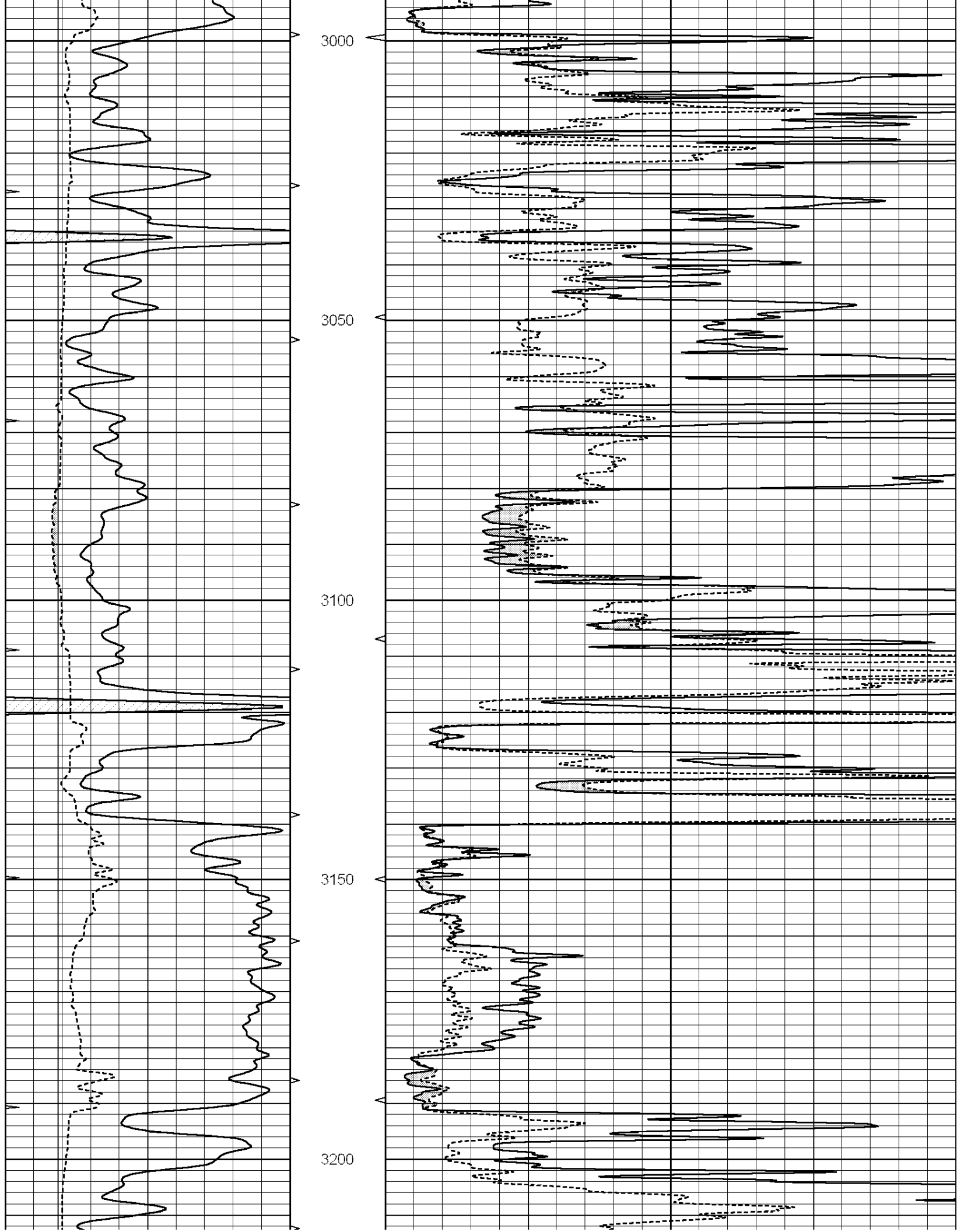
Charted by:

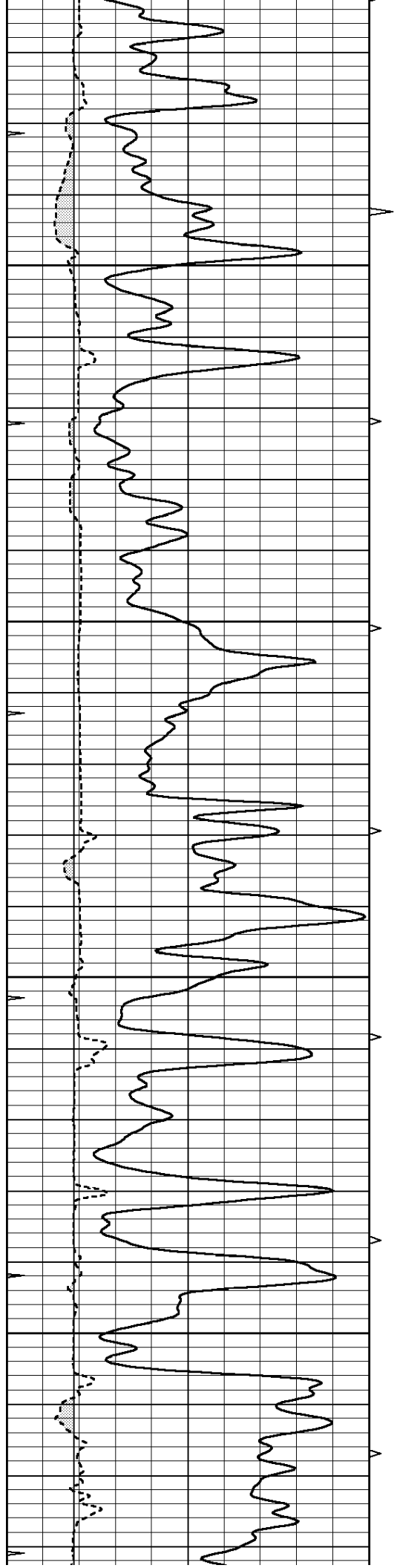
Depth in Feet scaled 1:240

0	GAMMA RAY (GAPI)	150
6	MELCAL (in)	16
0	MINMK	20

0	MEL1.5 (Ohm-m)	40
0	MEL2.0 (Ohm-m)	40





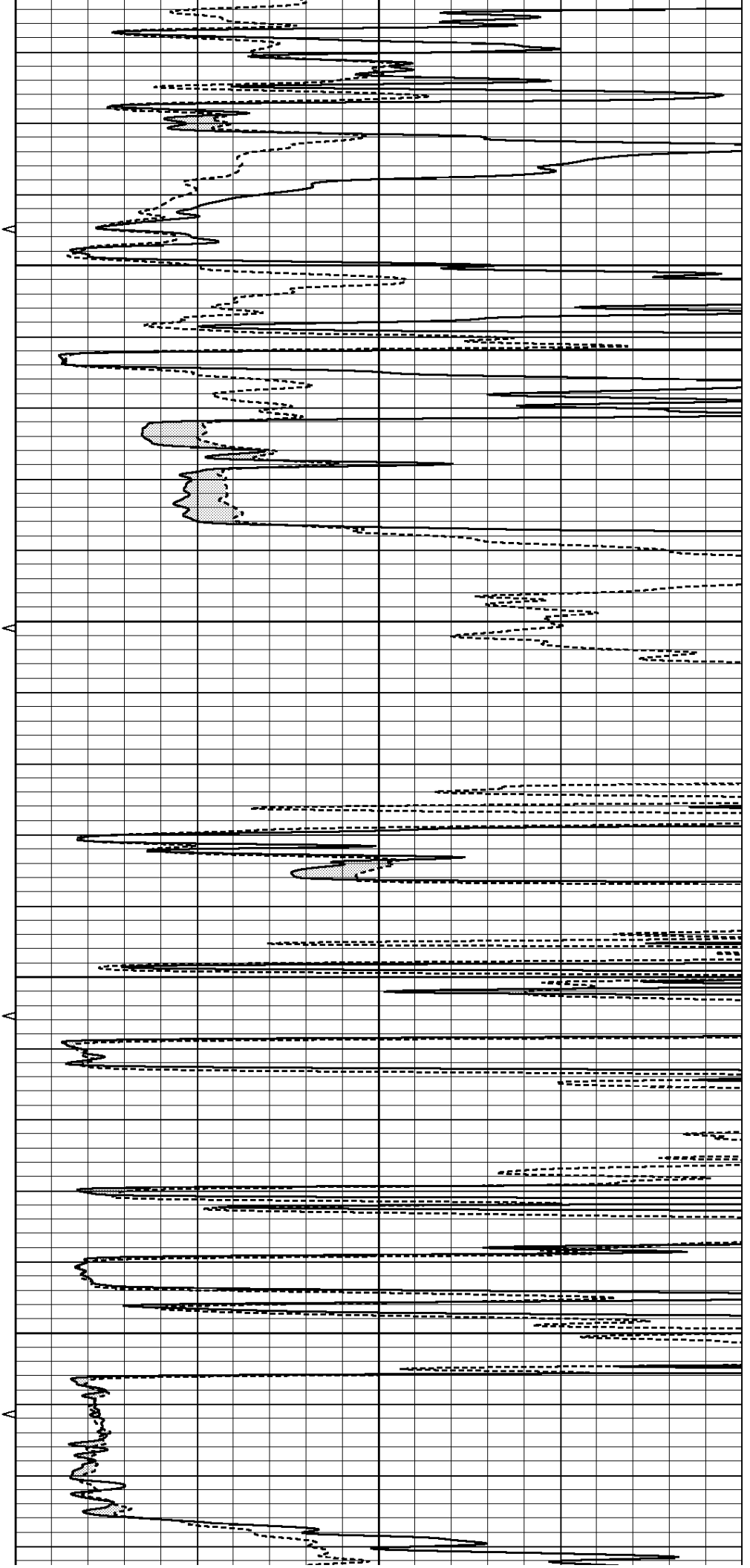


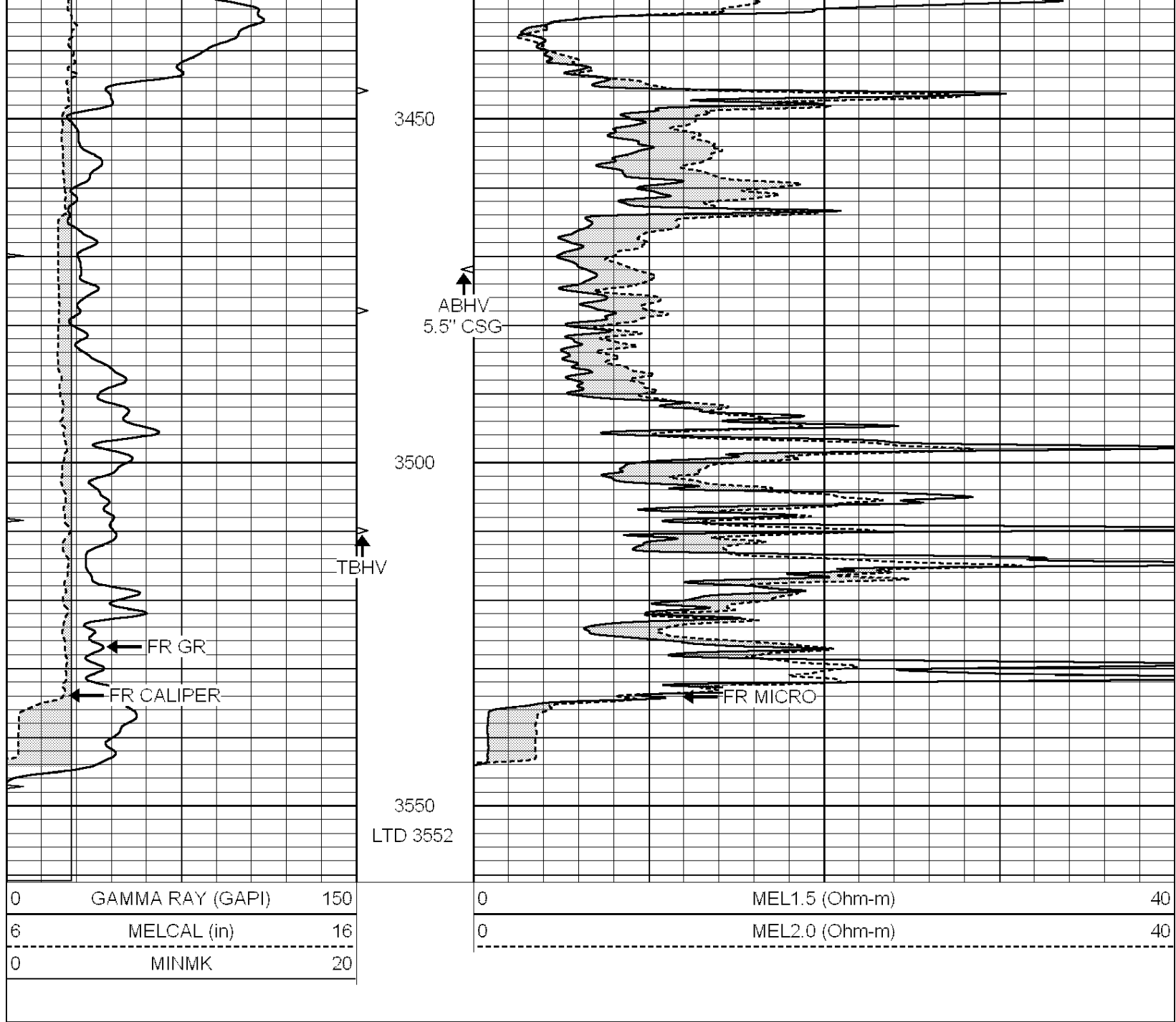
3250

3300

3350

3400





0	GAMMA RAY (GAPI)	150
6	MELCAL (in)	16
<hr/>		
0	MINMK	20

0	MEL1.5 (Ohm-m)	40
0	MEL2.0 (Ohm-m)	40
<hr/>		



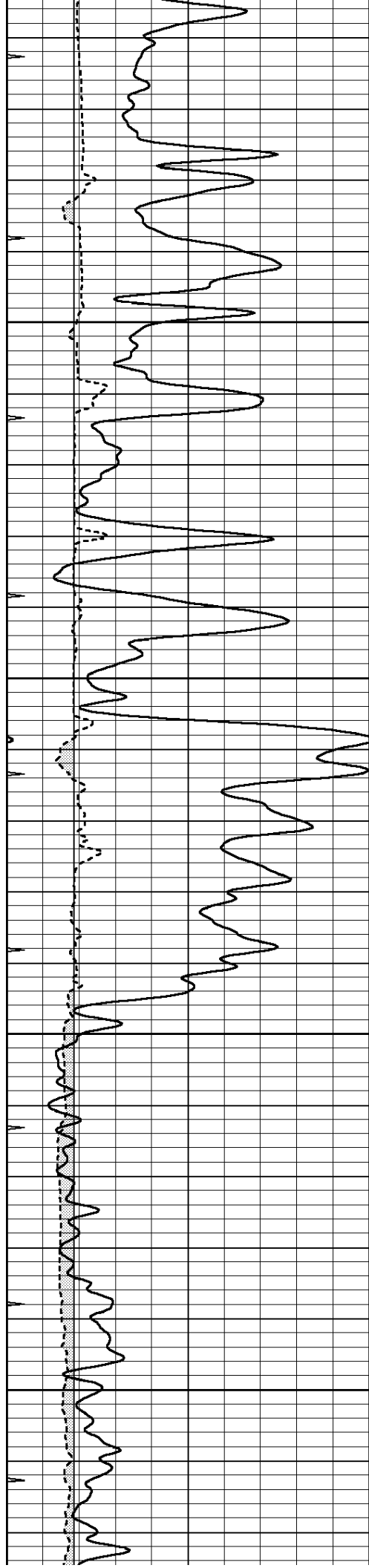
REPEAT SECTION

Database File: 010983ddn.db
 Dataset Pathname: pass12.2
 Presentation Format: _micro
 Dataset Creation: Thu Apr 11 23:15:54 2013 by Calc Open-Cased 090629
 Charted by: Depth in Feet scaled 1:240

0	GAMMA RAY (GAPI)	150
6	MELCAL (in)	16
<hr/>		
0	MINMK	20

0	MEL1.5 (Ohm-m)	40
0	MEL2.0 (Ohm-m)	40
<hr/>		



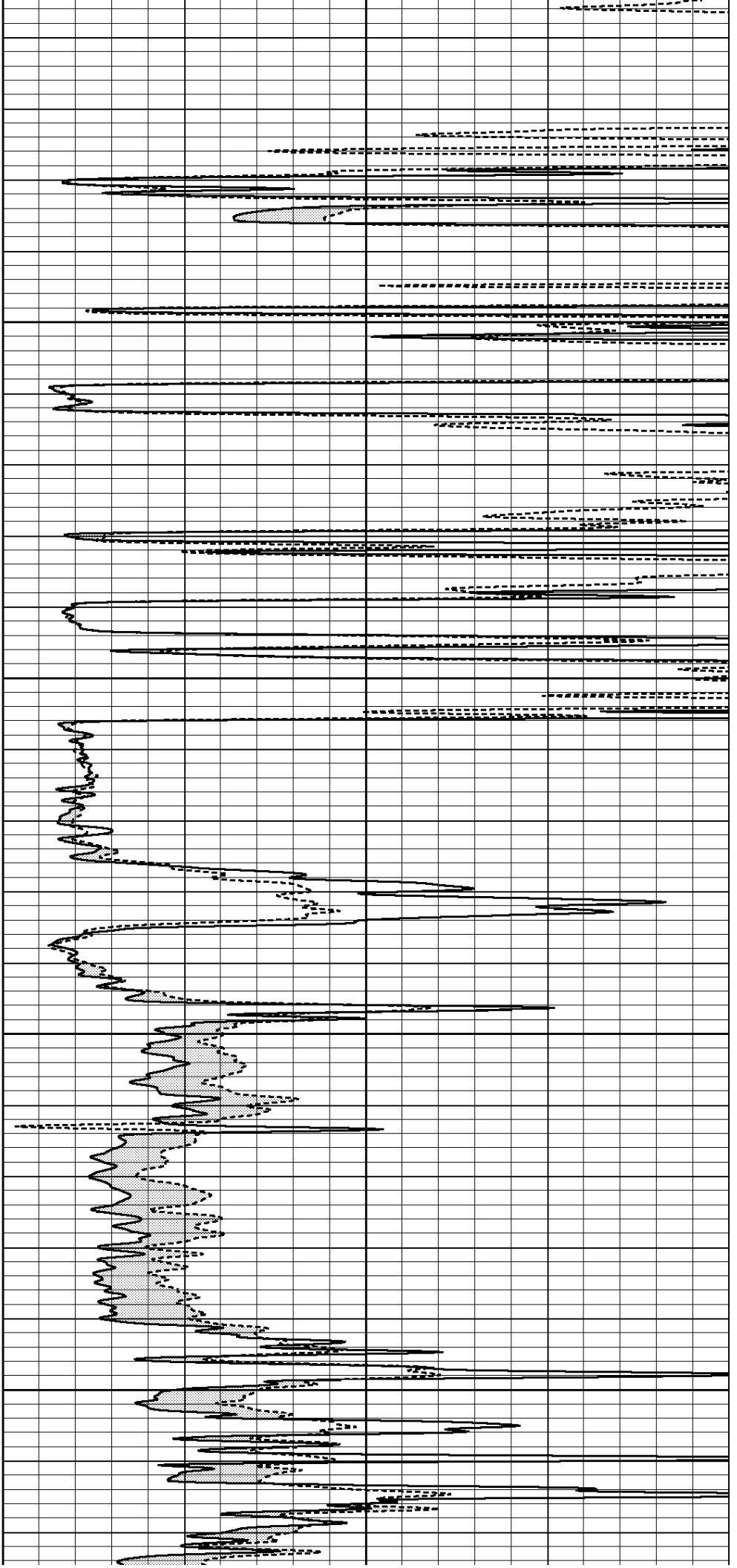


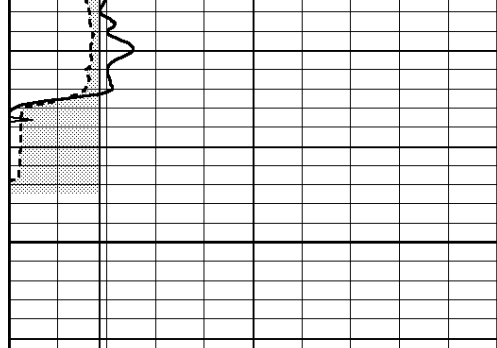
3350

3400

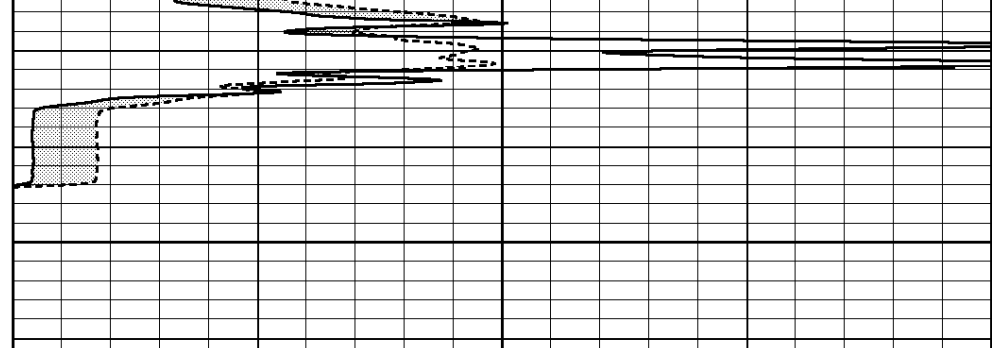
3450

3500





3550



0	GAMMA RAY (GAPI)	150
6	MELCAL (in)	16
0	MINMK	20

0	MEL1.5 (Ohm-m)	40
0	MEL2.0 (Ohm-m)	40

Calibration Report

Database File: 010983ddn.db
 Dataset Pathname: pass13.4.2
 Dataset Creation: Thu Apr 11 23:45:48 2013

MICRO Calibration Report

Serial Number:	Micro1	
Tool Model:	ProbeL	
Performed:	Tue Mar 26 03:04:19 2013	
Caliper Calibration:	Gain=2.096	Offset=1.126
References	Low Cal	High Cal
Readings	8.300	12.000
	3.327	5.092
1.5" Calibration:	Gain=90.000	Offset=-1.000
References	Low Cal	High Cal
Readings	0.000	20.000
	0.019	0.681
2" Calibration:	Gain=100.000	Offset=-3.000
References	Low Cal	High Cal
Readings	0.000	20.000
	0.008	0.791

Gamma Ray Calibration Report

Serial Number:	GR5	
Tool Model:	OPEN	
Performed:	Tue Mar 26 03:22:48 2013	
Calibrator Value:	1.0	GAPI
Background Reading:	0.0	cps
Calibrator Reading:	1.0	cps
Sensitivity:	2.6000	GAPI/cps