



**COMPLETION
& PRODUCTION
SERVICES CO.**

**SONIC
LOG**

Company L.D. DRILLING, INC.
Well FB #1-21
Field WILDCAT
County BARTON State KANSAS

Company L.D. DRILLING, INC.
Well FB #1-21
Field WILDCAT
County BARTON
State KANSAS

Location: API #: 15-009-25826-00-00
633' FNL & 460' FEL
SW - NE - NE - NE
SEC 21 TWP 18S RGE 14W
GROUND LEVEL Elevation 1926
Log Measured From KELLY BUSHING 5' A.G.L.
Drilling Measured From KELLY BUSHING
Other Services
CNL/CDL
DIL/MEL
Elevation
K.B. 1931
D.F. 1929
G.L. 1926

Date	4/11/13		
Run Number	TWAO		
Depth Driller	3550		
Depth Logger	3552		
Bottom Logged Interval	3542		
Top Log Interval	850		
Casing Driller	892		
Casing Logger	894		
Bit Size	7.875		
Type Fluid in Hole	CHEMICAL MUD		
Density / Viscosity	9.5 / 59	CHLORIDES 7.000	
pH / Fluid Loss	8.5 / 9.2		
Source of Sample	FLOWLINE		
Rim @ Meas. Temp	0.70 @ 78F		
Rmf @ Meas. Temp	0.53 @ 78F		
Rmc @ Meas. Temp	0.84 @ 78F		
Source of Rmf / Rmc	MEASURED		
Rim @ BHT	0.49 @ 112F		
Time Circulation Stopped	2 HOURS		
Time Logger on Bottom			
Maximum Recorded Temperature	112F		
Equipment Number	860		
Location	HAYS, KS.		
Recorded By	IAN MABB		
Witnessed By	KIM SHOEMAKER		

<<< Fold Here >>>

All interpretations are opinions based on inferences from electrical or other measurements and we cannot and do not guarantee the accuracy or correctness of any interpretation, and we shall not, except in the case of gross or willful negligence on our part, be liable or responsible for any loss, costs, damages, or expenses incurred or sustained by anyone resulting from any interpretation made by any of our officers, agents or employees. These interpretations are also subject to our general terms and conditions set out in our current Price Schedule.

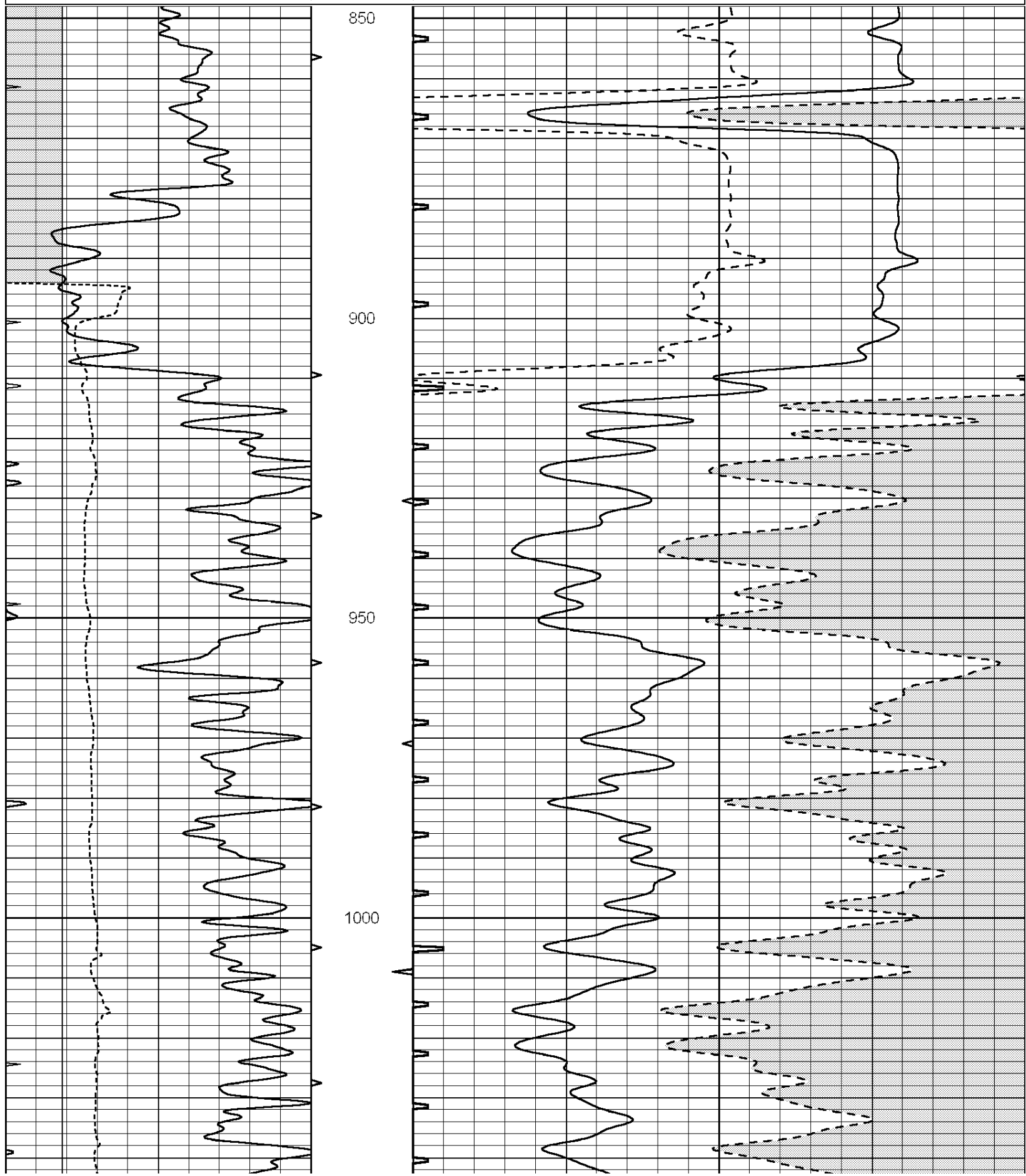
Comments

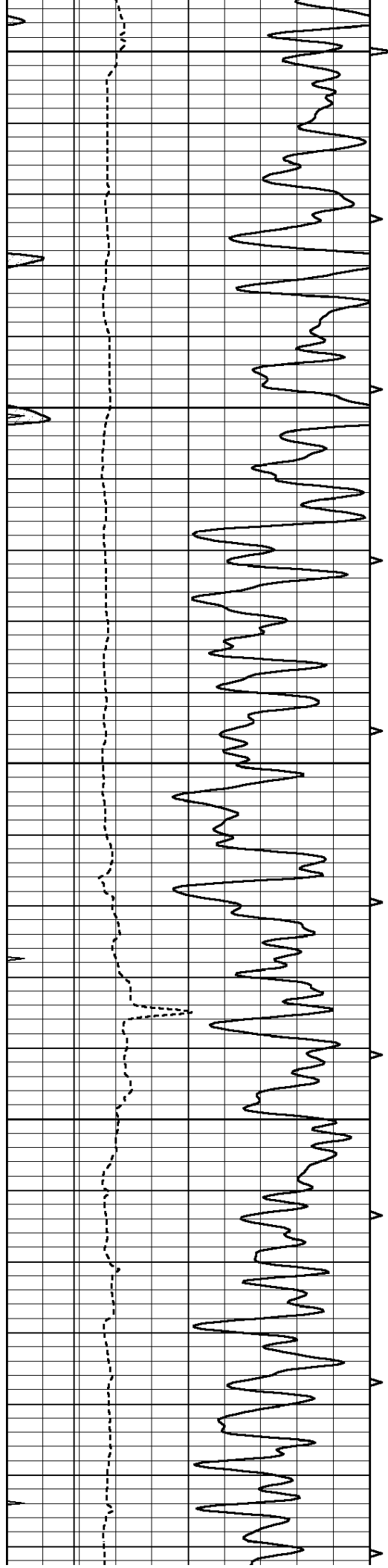
**NABORS COMPLETION & PRODUCTION CO.
785-628-6395
THANK YOU FOR YOUR BUSINESS**

DIRECTIONS: HWY 281 & HWY 4 - 3 1/2 MILES SOUTH ON BOYD BLACKTOP TO RD. 80 - 1 WEST - 1/4 SOUTH - WEST INTO

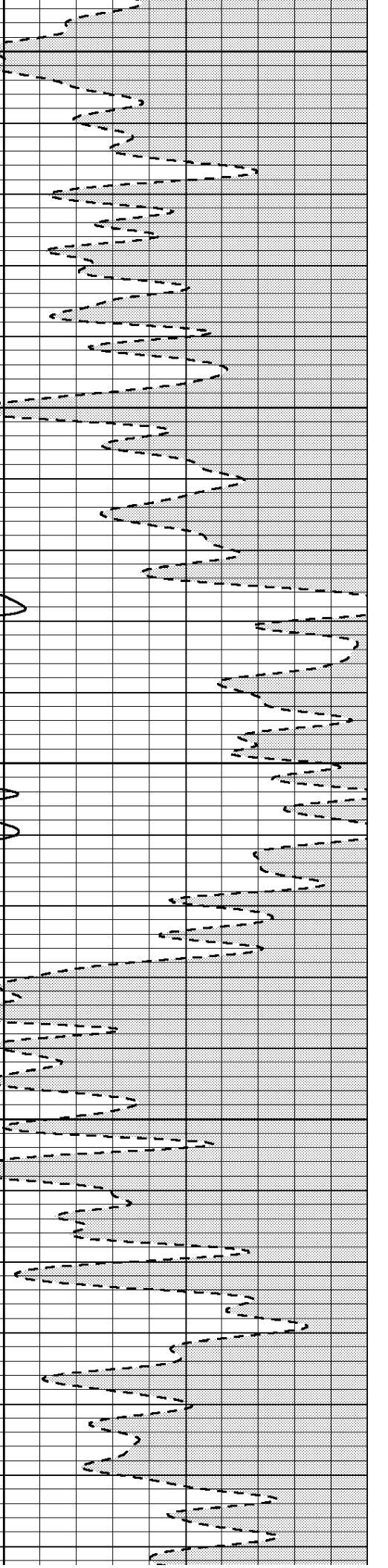
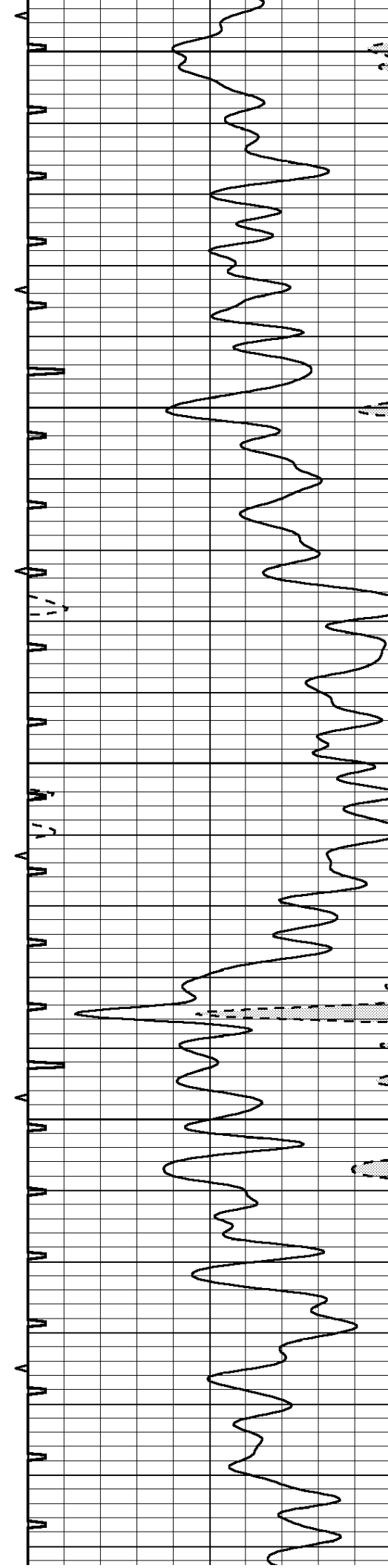
Database File: 010983ddn.db
Dataset Pathname: pass13.6
Presentation Format: slt
Dataset Creation: Fri Apr 12 00:17:07 2013

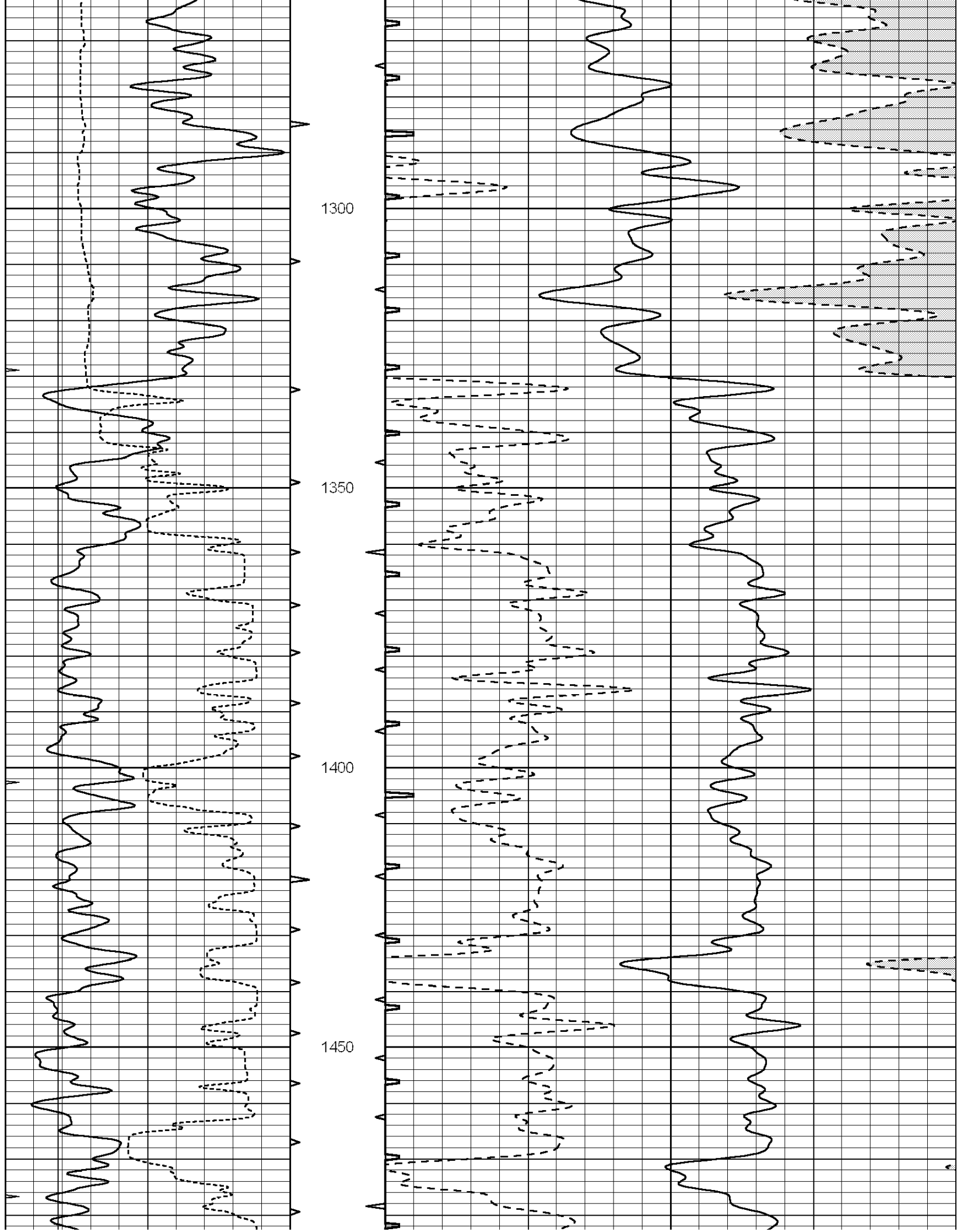
0	GAMMA RAY (GAPI)	150	ABHV	140	DELTA TIME (usec/ft)	40
6	MELCAL (in)	16	10 (ft3)	0 30	SONIC POROSITY (pu)	-10
0	MINMK	20	TBHV	0	ITT (msec)	20
			0 (ft3)	10		

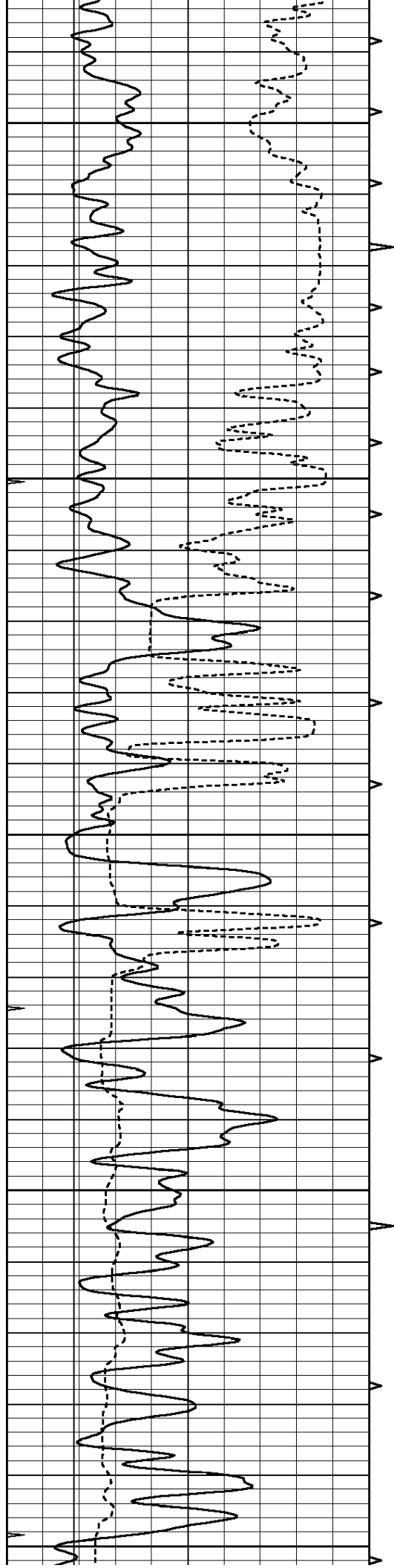




1050
1100
1150
1200
1250







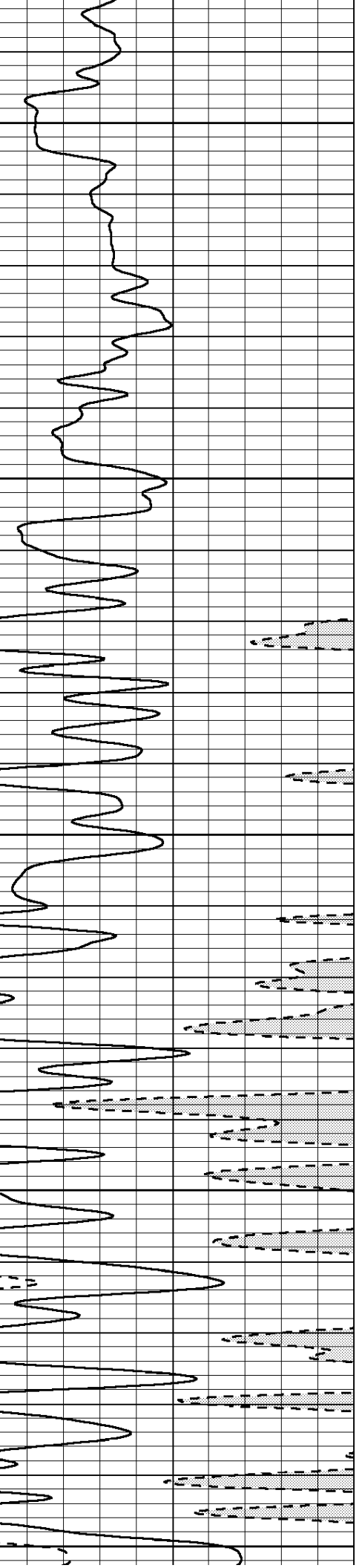
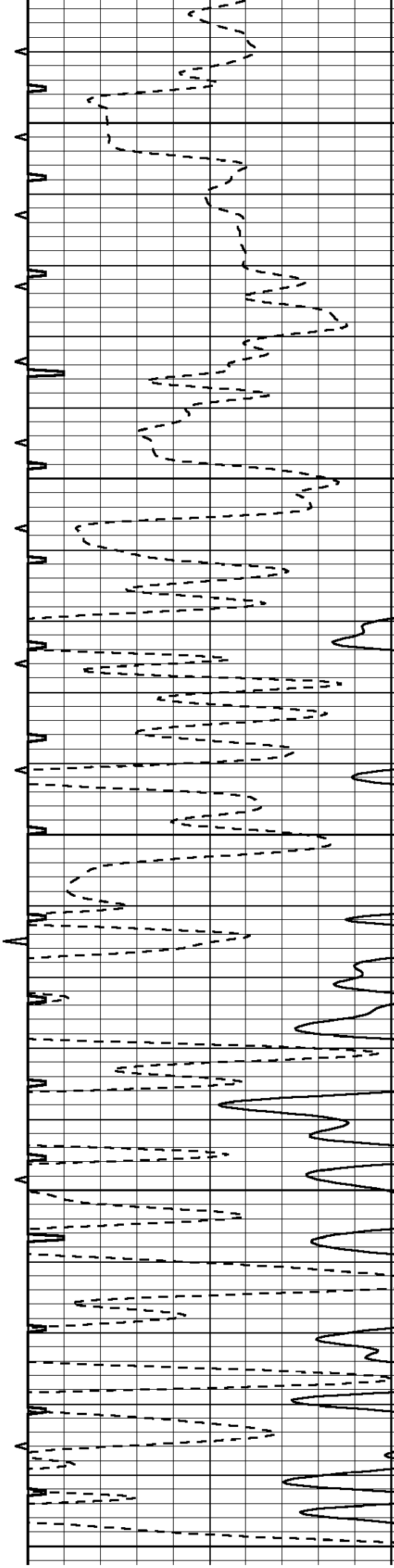
1500

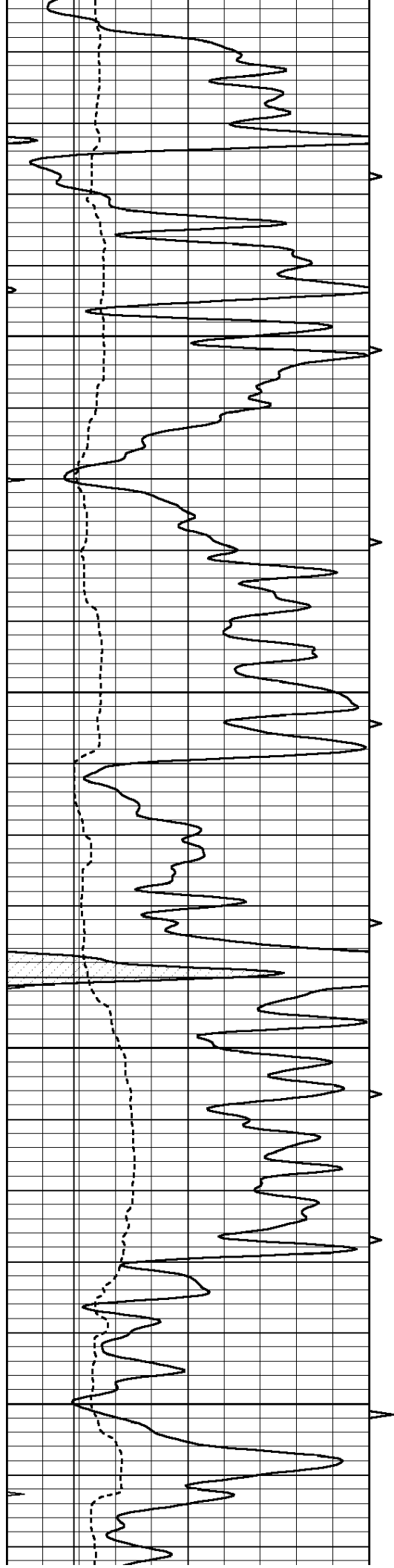
1550

1600

1650

1700



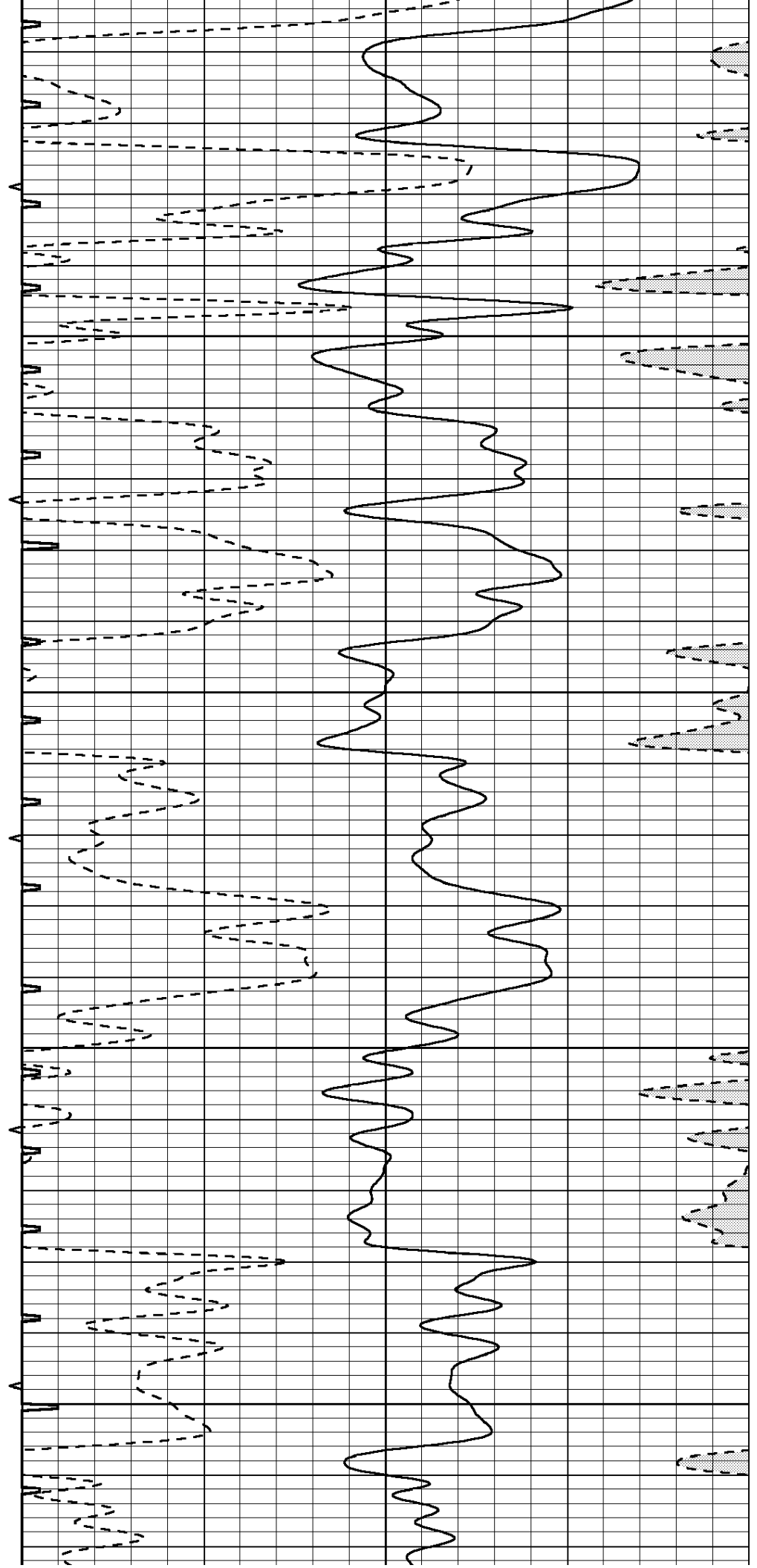


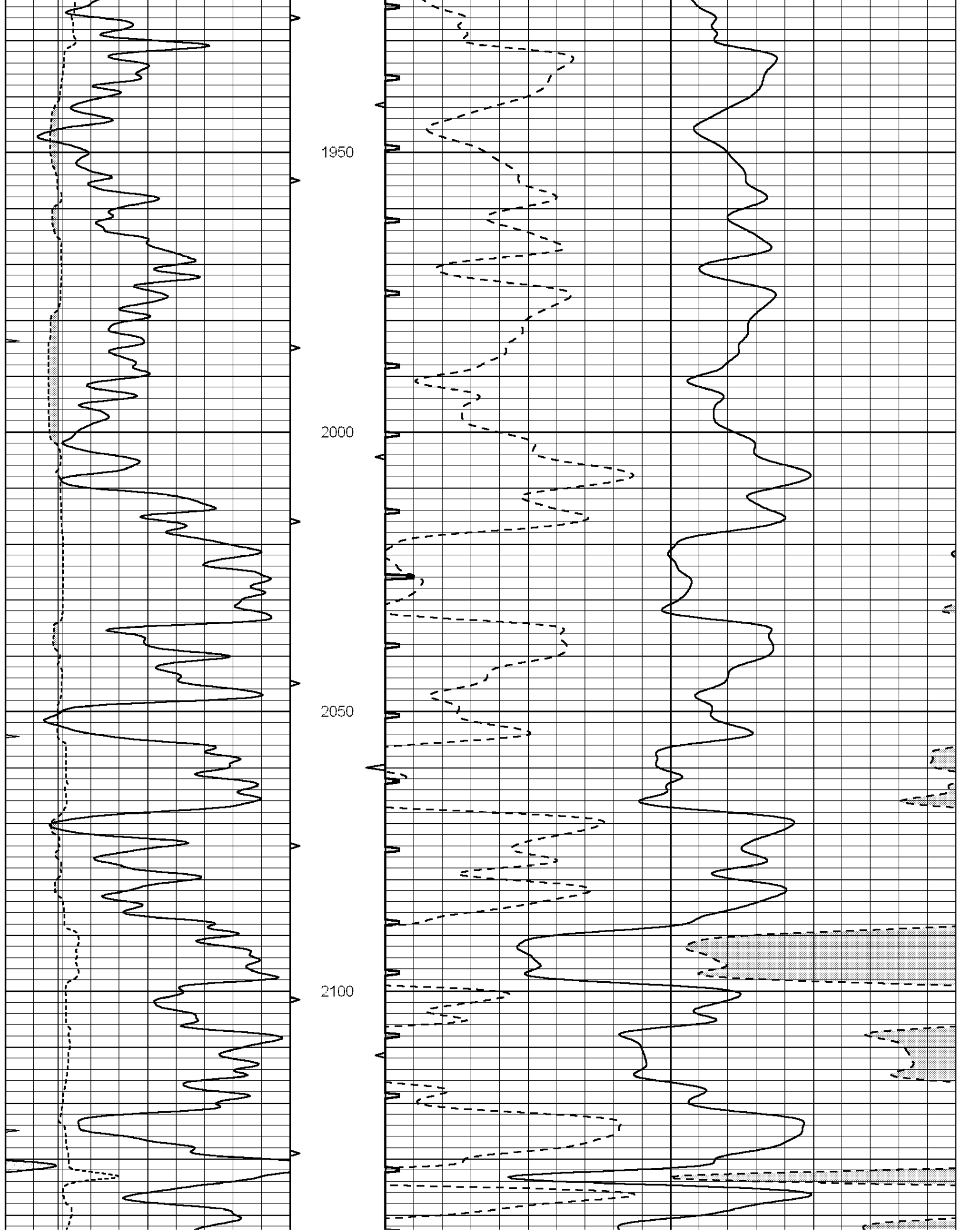
1750

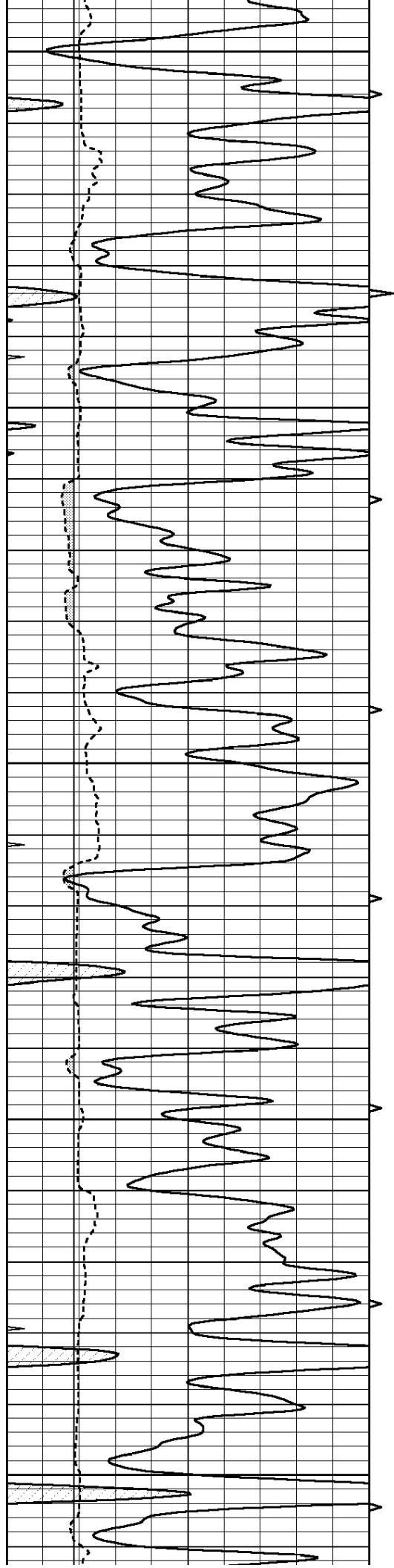
1800

1850

1900







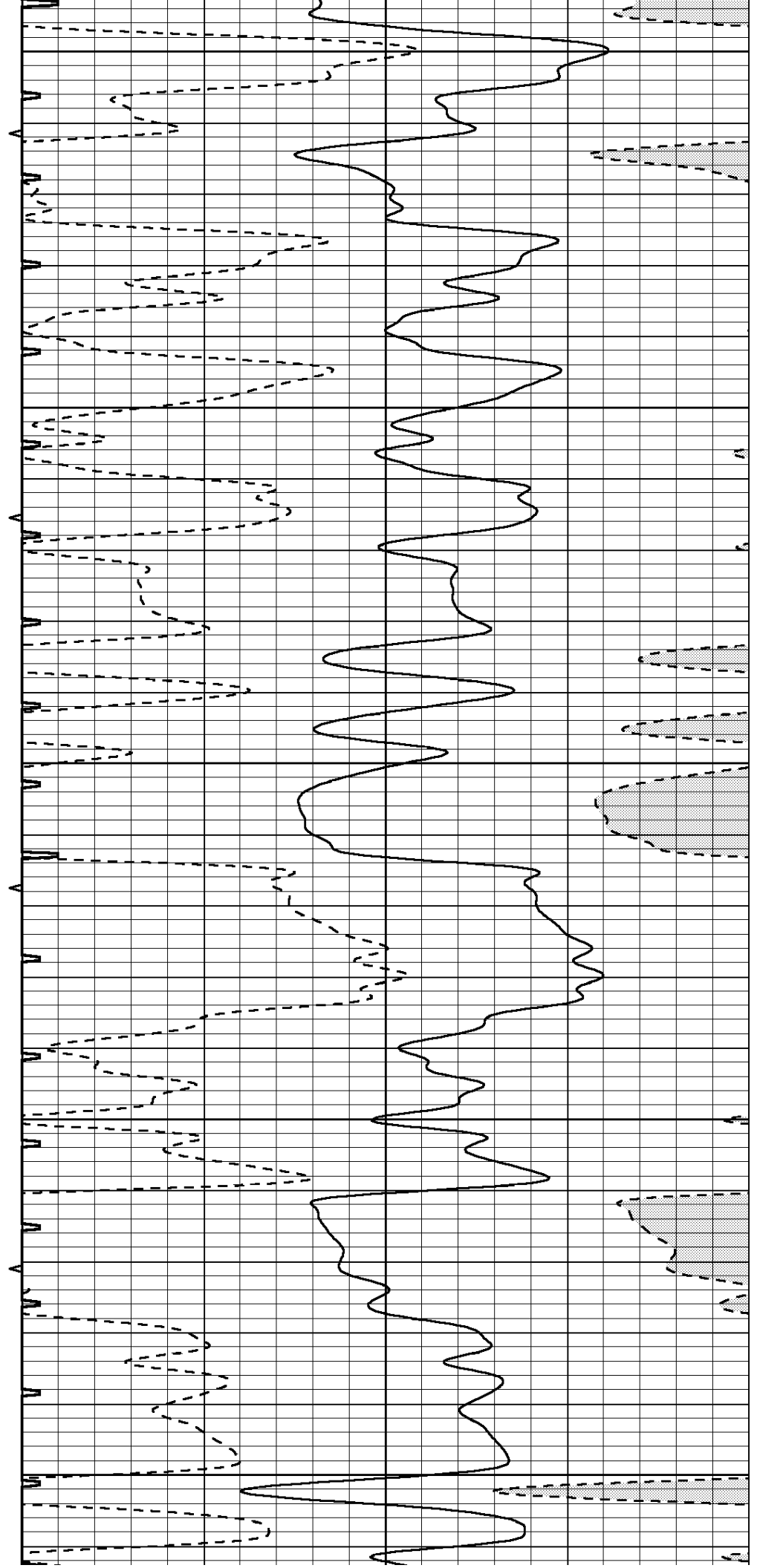
2150

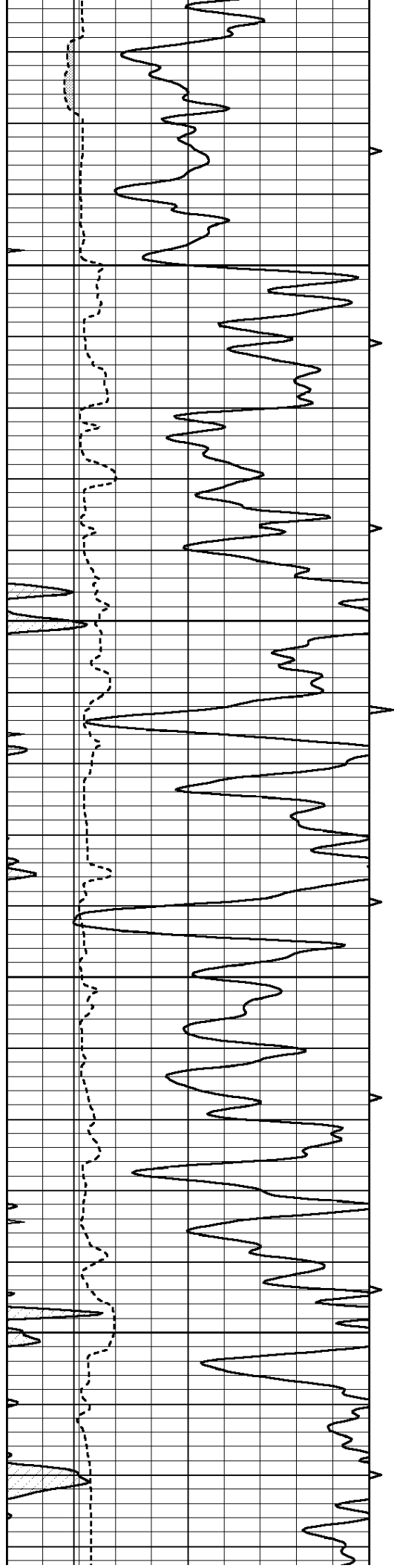
2200

2250

2300

2350



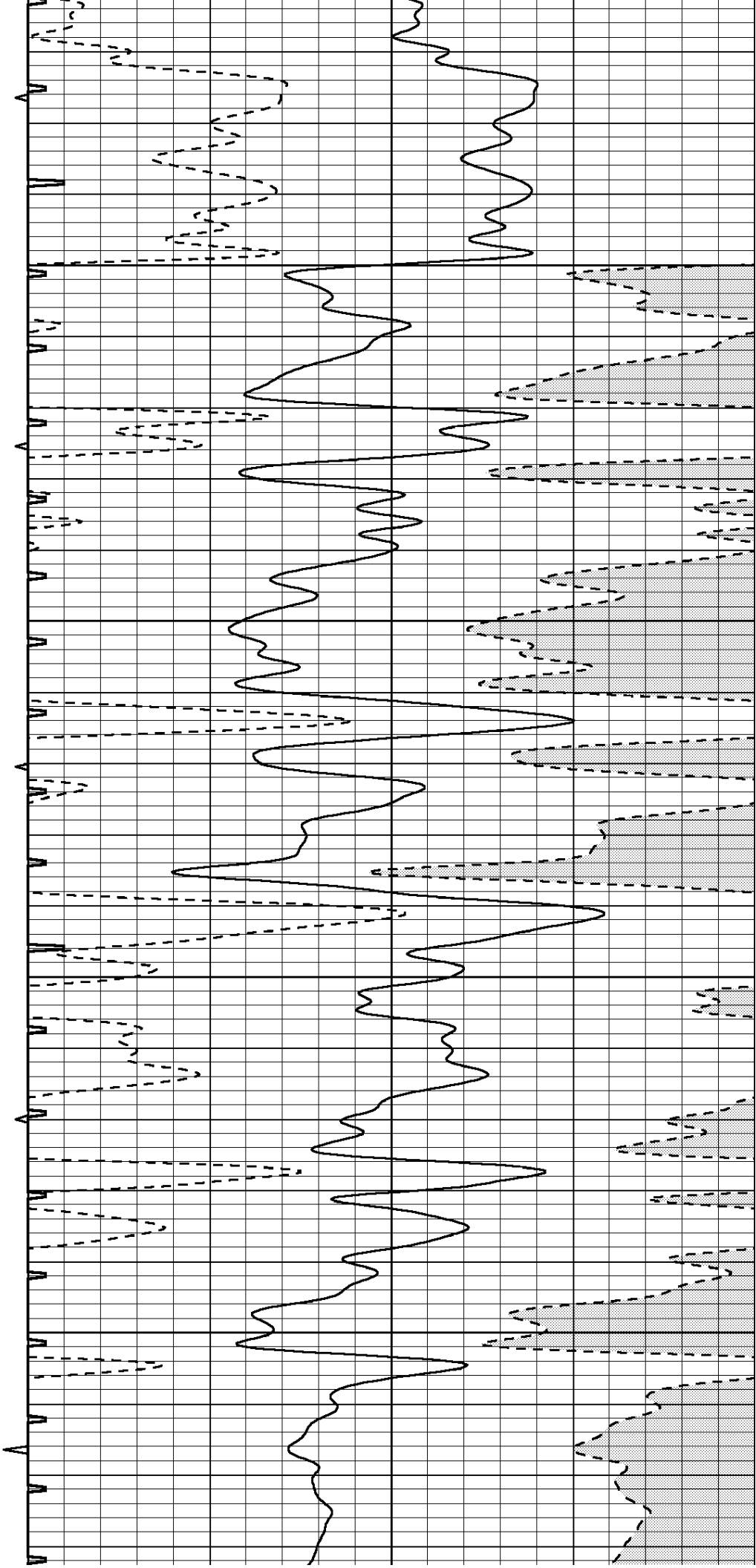


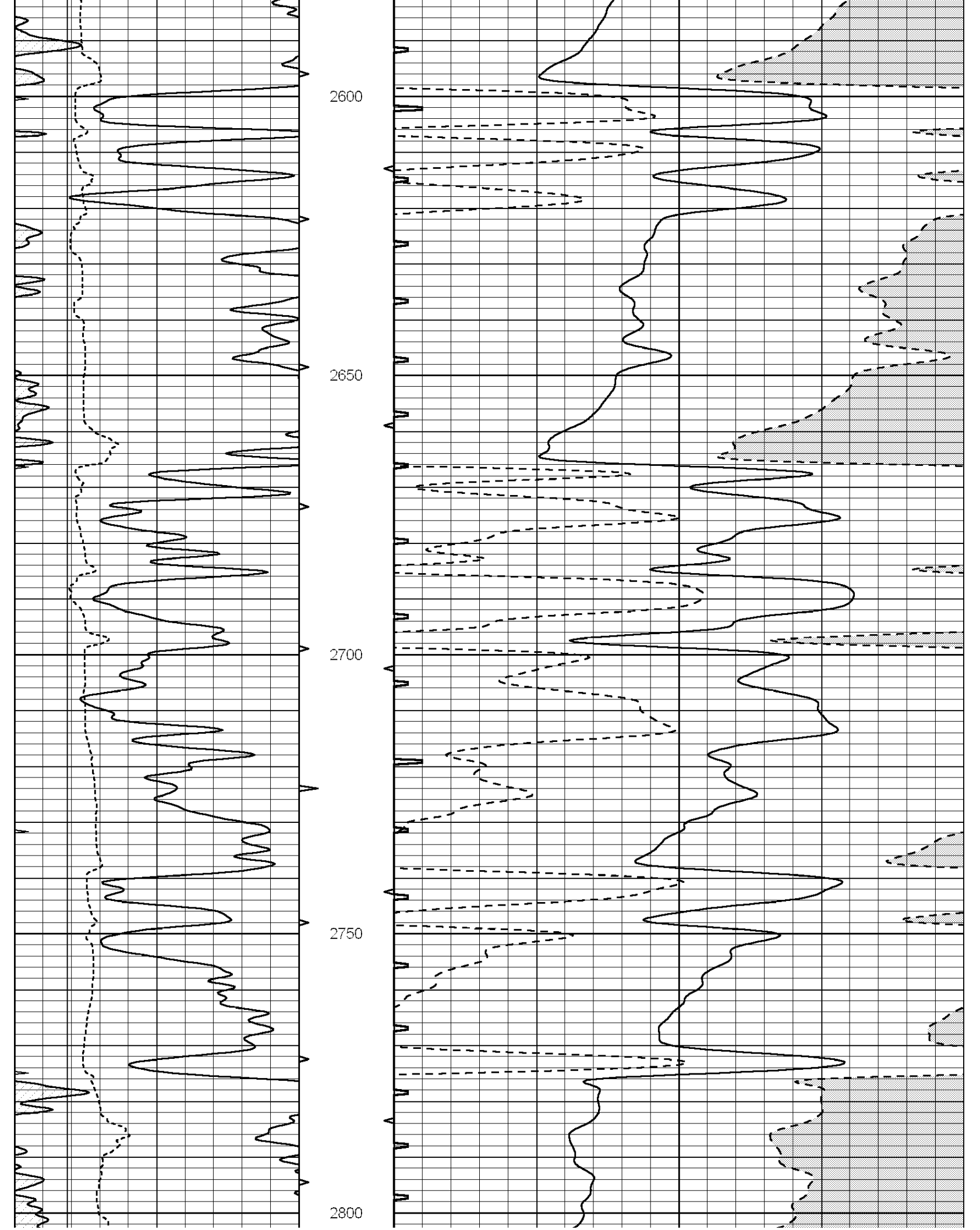
2400

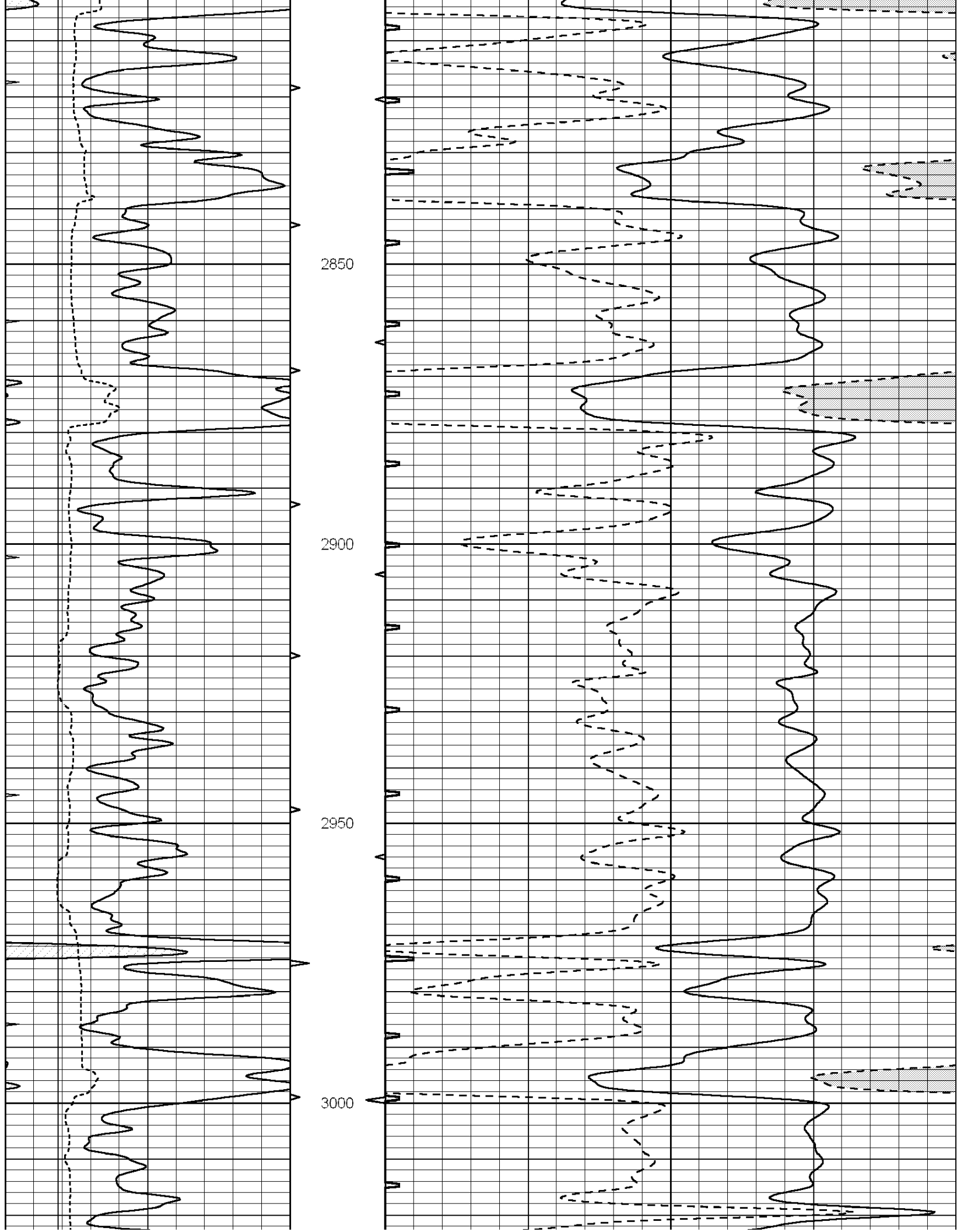
2450

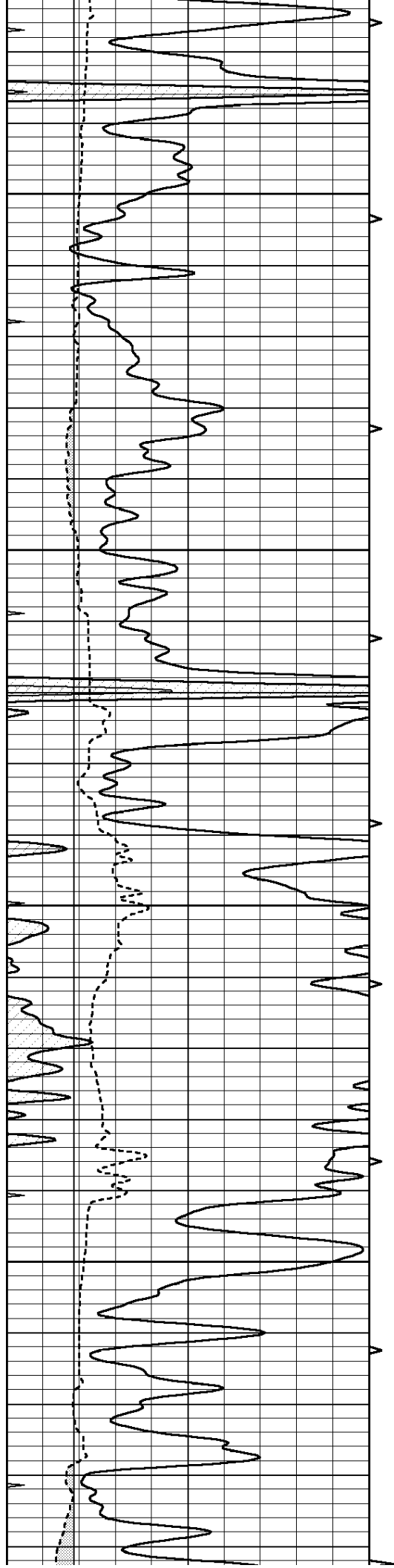
2500

2550







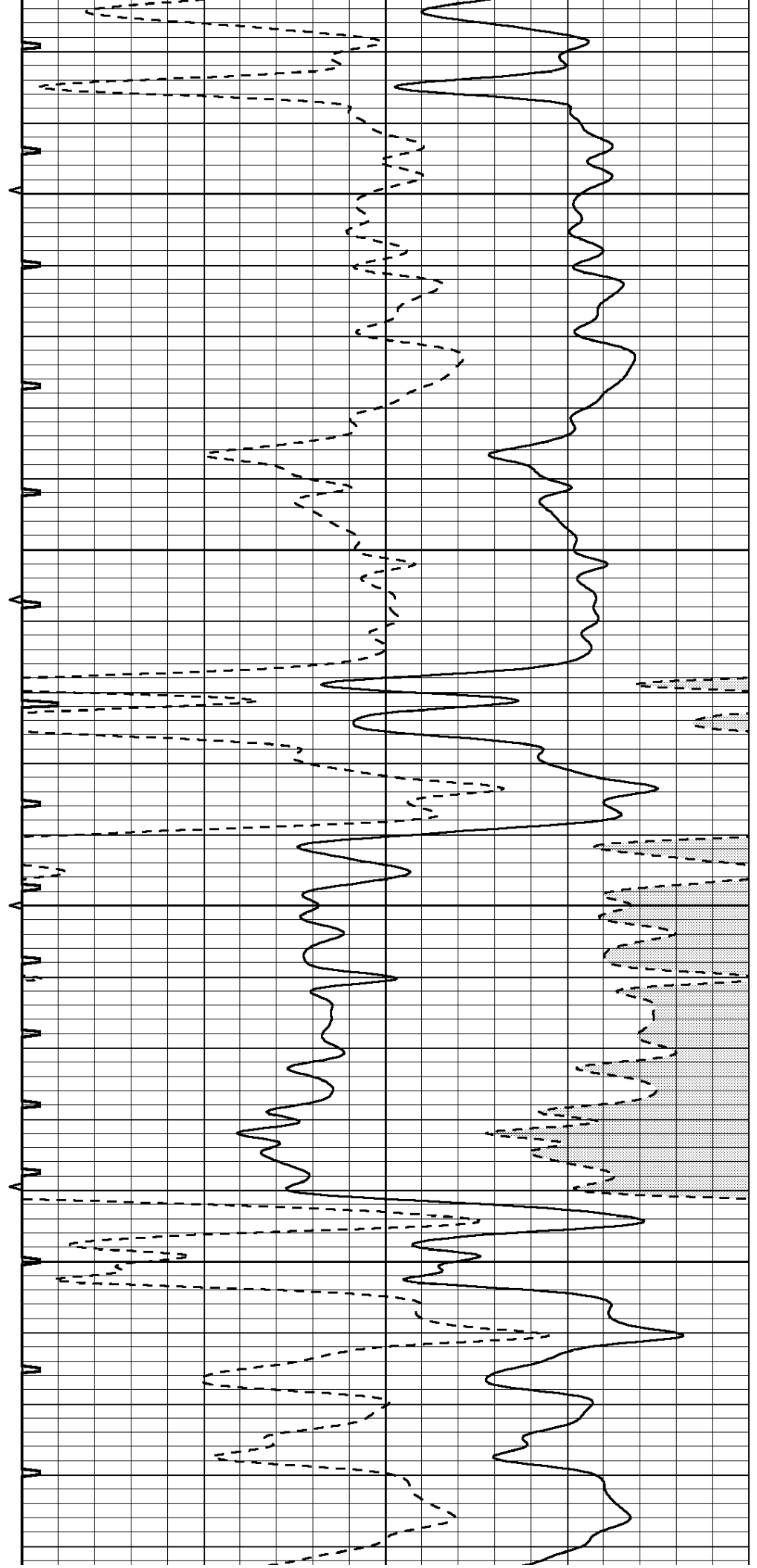


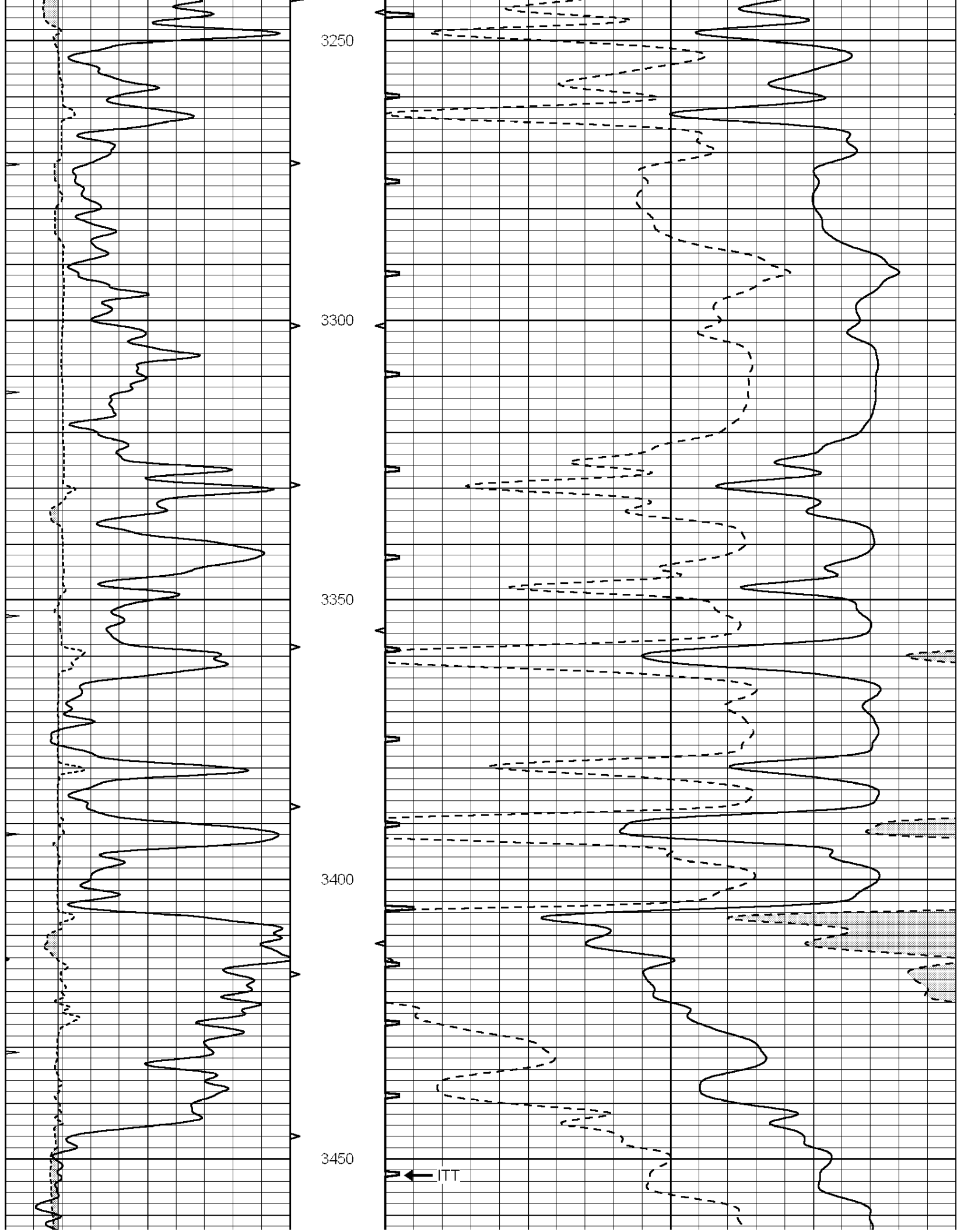
3050

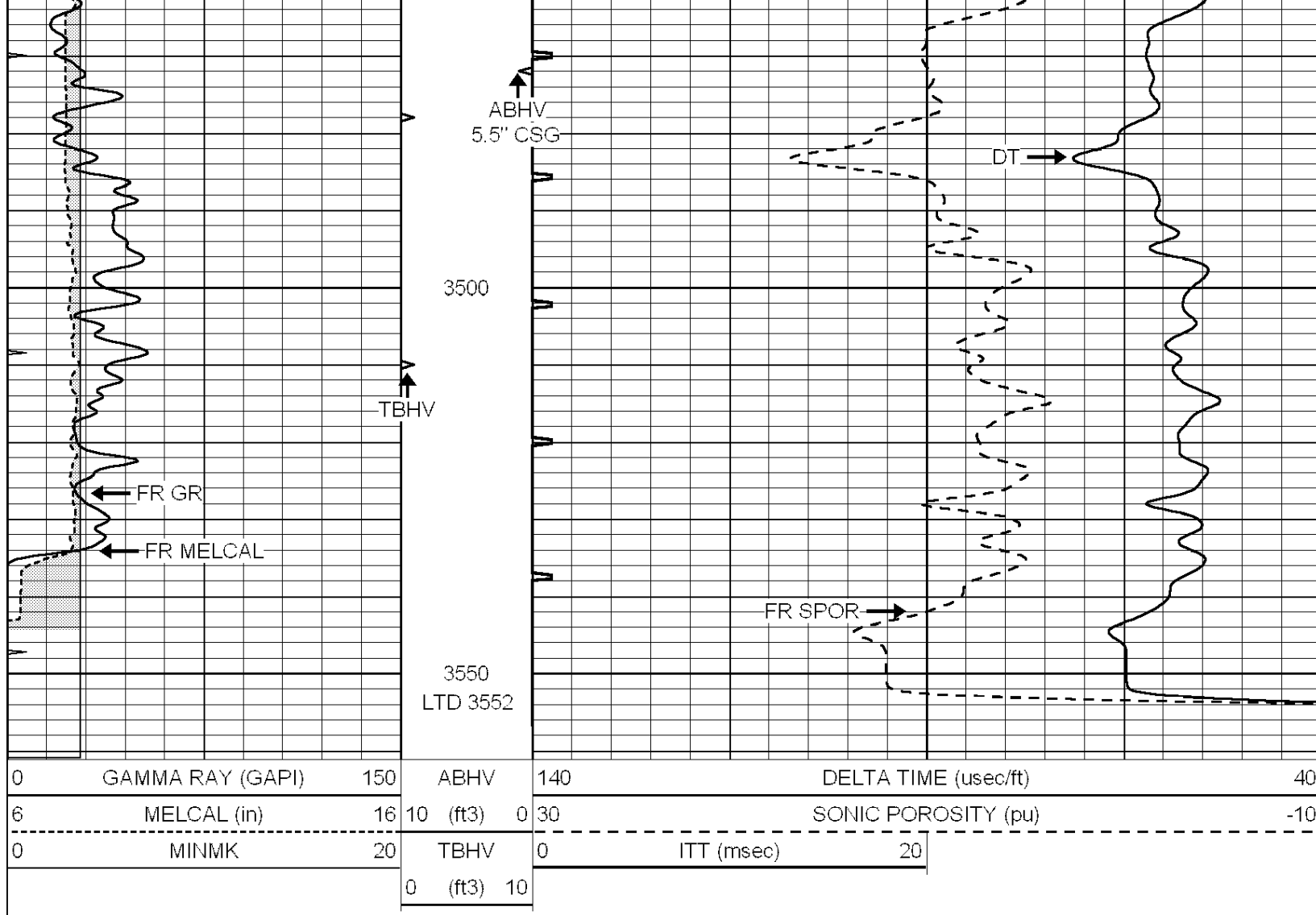
3100

3150

3200



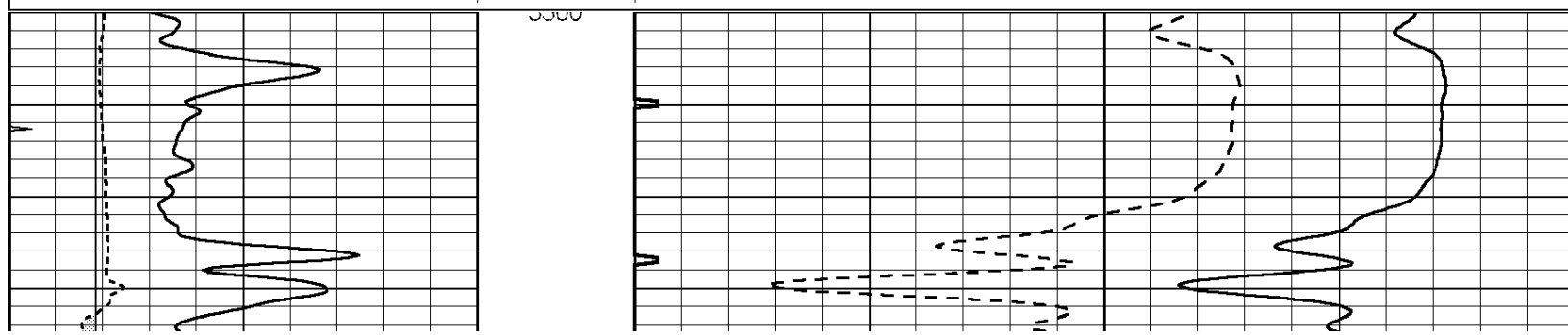


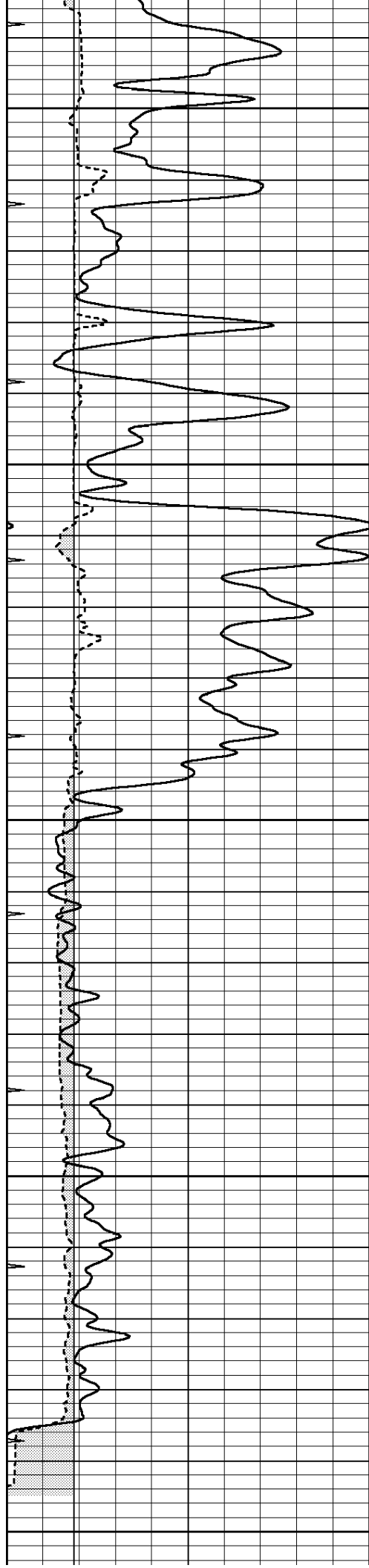


REPEAT SECTION

Database File: 010983ddn.db
 Dataset Pathname: pass12.2
 Presentation Format: slt
 Dataset Creation: Thu Apr 11 23:15:54 2013 by Calc Open-Cased 090629
 Charted by: Depth in Feet scaled 1:240

0	GAMMA RAY (GAPI)	150	ABHV	140	DELTA TIME (usec/ft)	40
6	MELCAL (in)	16	10 (ft3) 0	30	SONIC POROSITY (pu)	-10
0	MINMK	20	TBHV	0	ITT (msec)	20
			0 (ft3) 10			





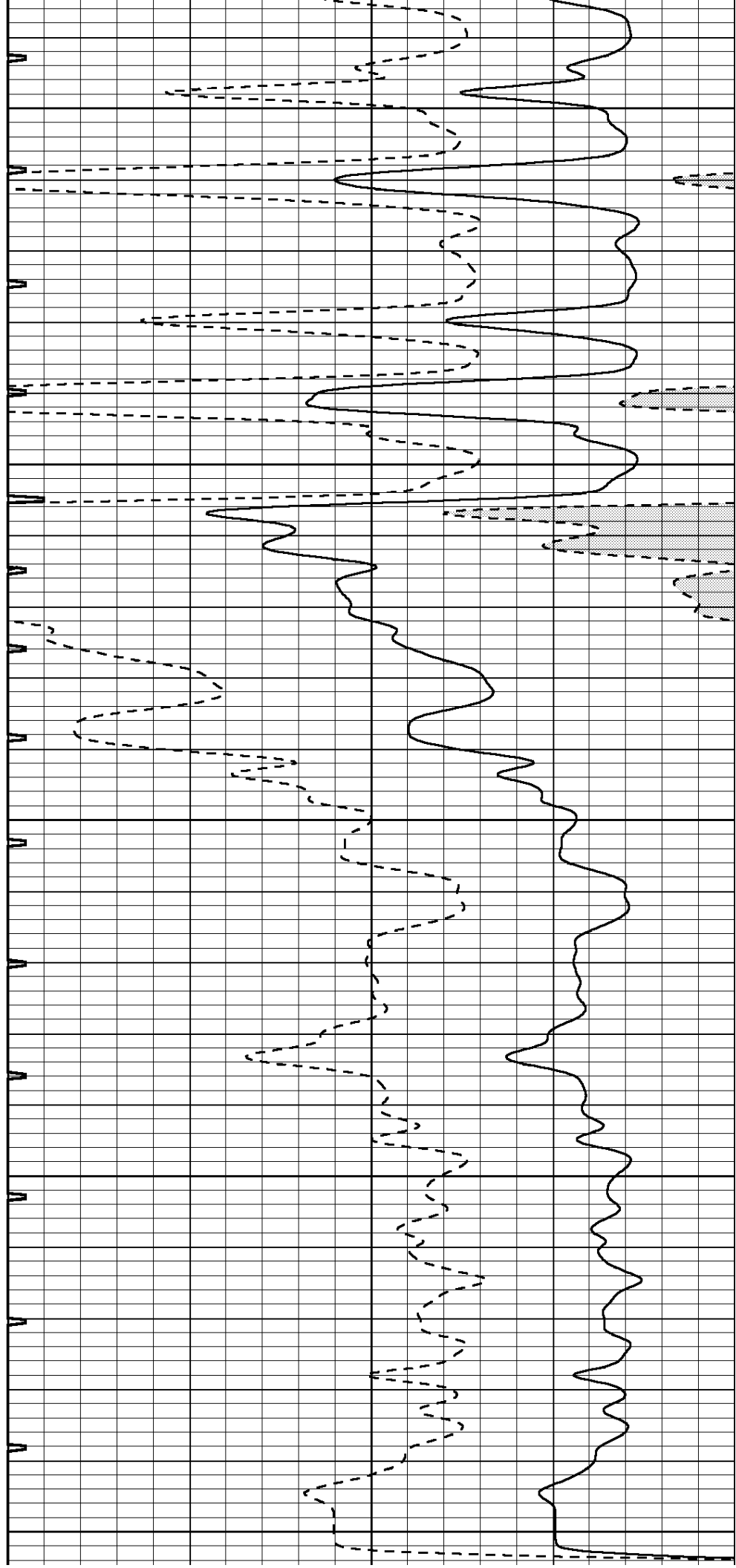
3350

3400

3450

3500

3550



0	GAMMA RAY (GAPI)	150	ABHV	140	DELTA TIME (usec/ft)		40
6	MELCAL (in)	16	10 (ft3) 0	30	SONIC POROSITY (pu)		-10
0	MINMK	20	TBHV	0	ITT (msec)	20	
			0 (ft3) 10				