



Pioneer Energy Services

## Dual Compensated Porosity Log

API No.	15-185-23,805-00-00		
Company	L.D. Drilling, Inc.		
Well	Mary Ann #1-14		
Field	Wildcat		
County	Stafford	State	Kansas
Location	1526' FSL 1369' FEL		
	Sec: 14	Twp: 23S	Rge: 13W
			Elevation 1874
			K.B. 1879
			D.F. 1874
			G.L. 1874

Permanent Datum	Ground Level	Elevation 1874
Log Measured From	Kelly Bushing	5 Ft. Above Perm. Datum
Drilling Measured From	Kelly Bushing	

Date	4/23/2013
Run Number	One
Type Log	CNL / CDL
Depth Driller	4000
Depth Logger	4002
Bottom Logged Interval	3981
Top Logged Interval	2800
Type Fluid In Hole	Chemical
Salinity, PPM CL	8000
Density	8.9
Level	Full
Max. Rec. Temp. F	116
Operating Rig Time	4 Hours
Equipment -- Location	15   Hays
Recorded By	D Kerr
Witnessed By	Kim Shoemaker

Borehole Record				Casing Record			
Run No.	Bit	From	To	Size	Wgt.	From	To
One	12.25	00	347	8.625	23#	00	347
Two	7.875	347	TD				

<<< Fold Here >>>

All interpretations are opinions based on inferences from electrical or other measurements and we cannot and do not guarantee the accuracy or correctness of any interpretation, and we shall not, except in the case of gross or willful negligence on our part, be liable or responsible for any loss, costs, damages, or expenses incurred or sustained by anyone resulting from any interpretation made by any of our officers, agents or employees. These interpretations are also subject to our general terms and conditions set out in our current Price Schedule.

### Comments

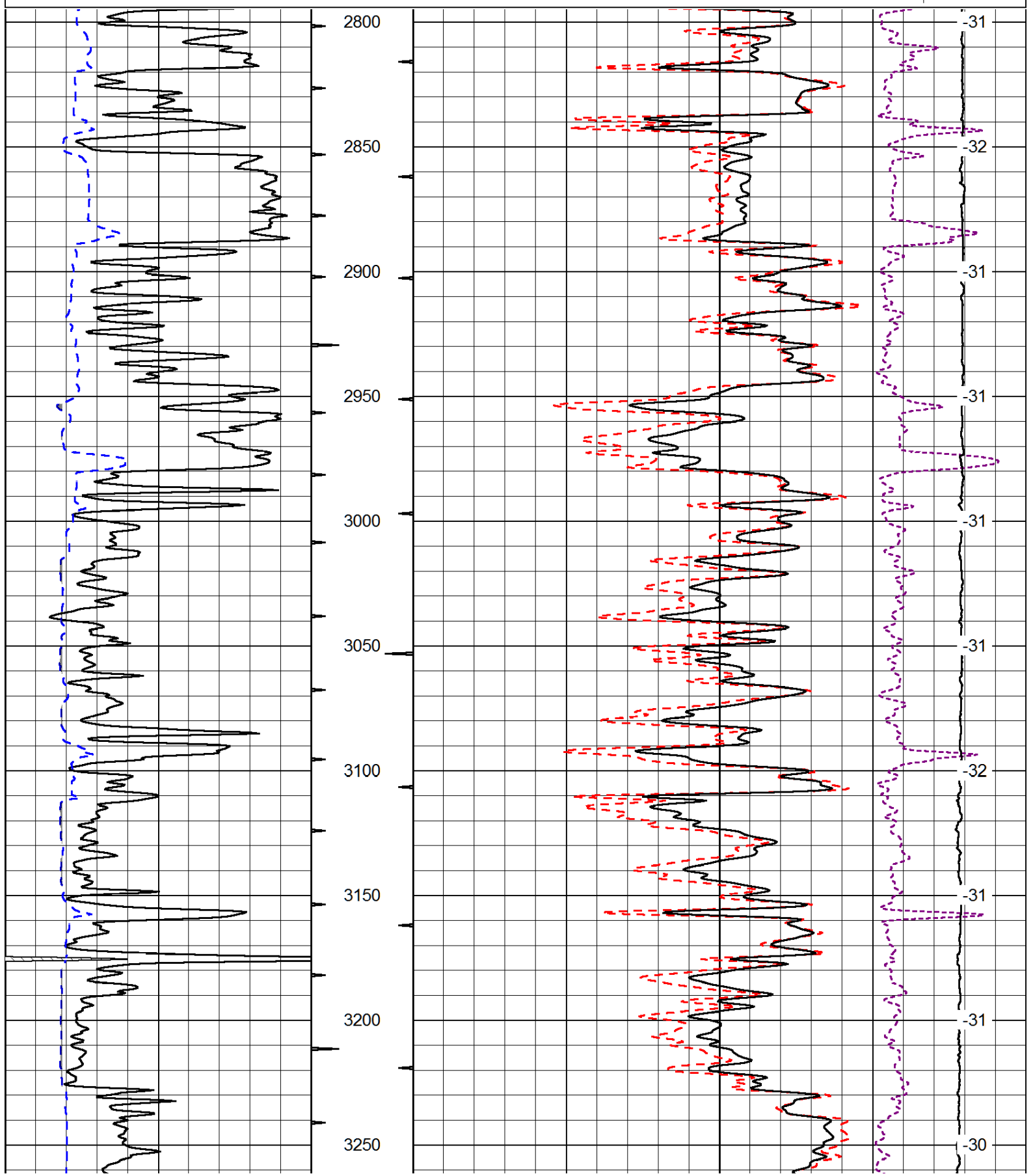
Thank you for using Log-Tech, Inc.  
(785) 625-3858

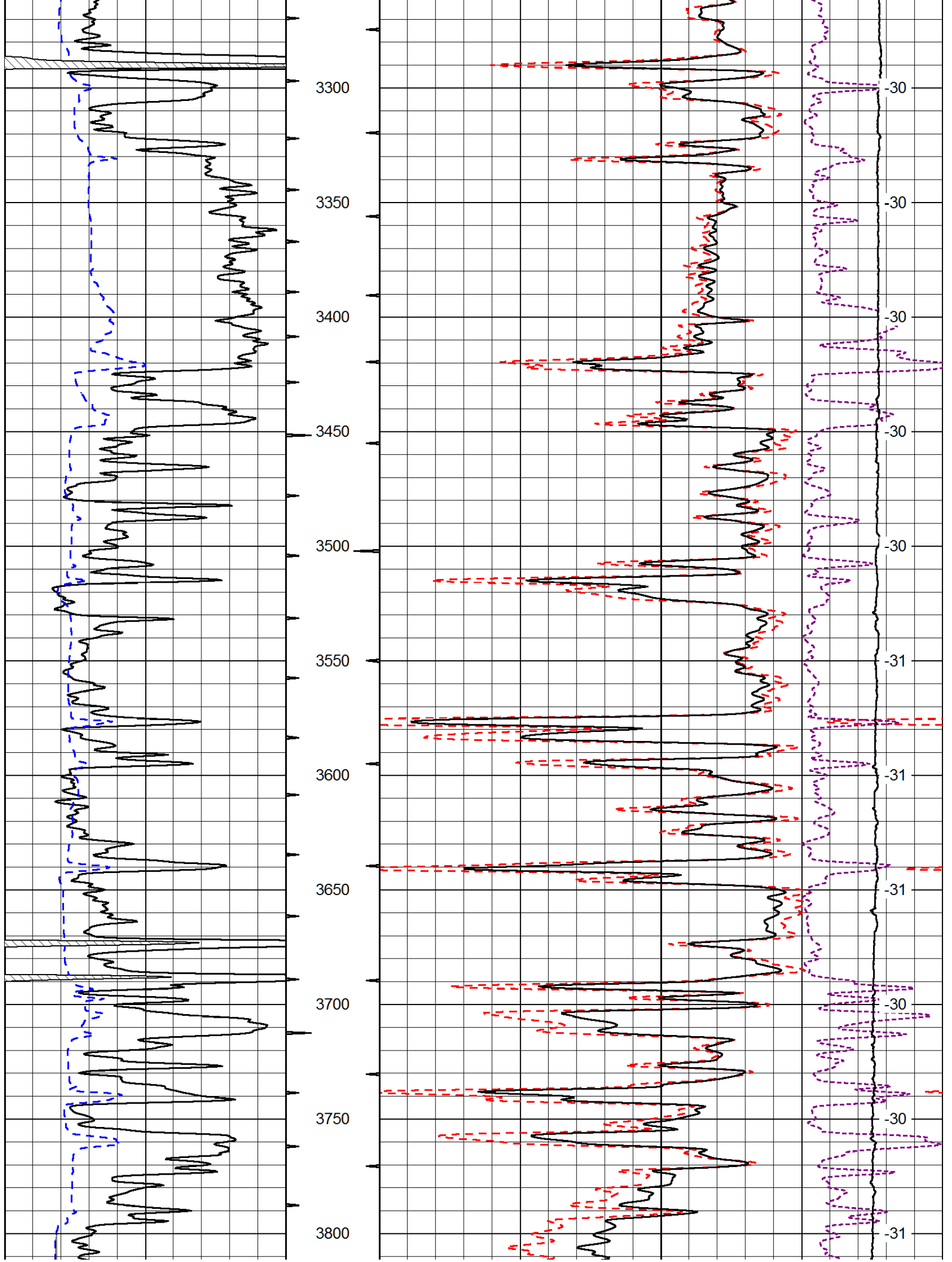
St. John KS, North to 70 RD,  
2 East, 1 South, 1/2 West, North Into

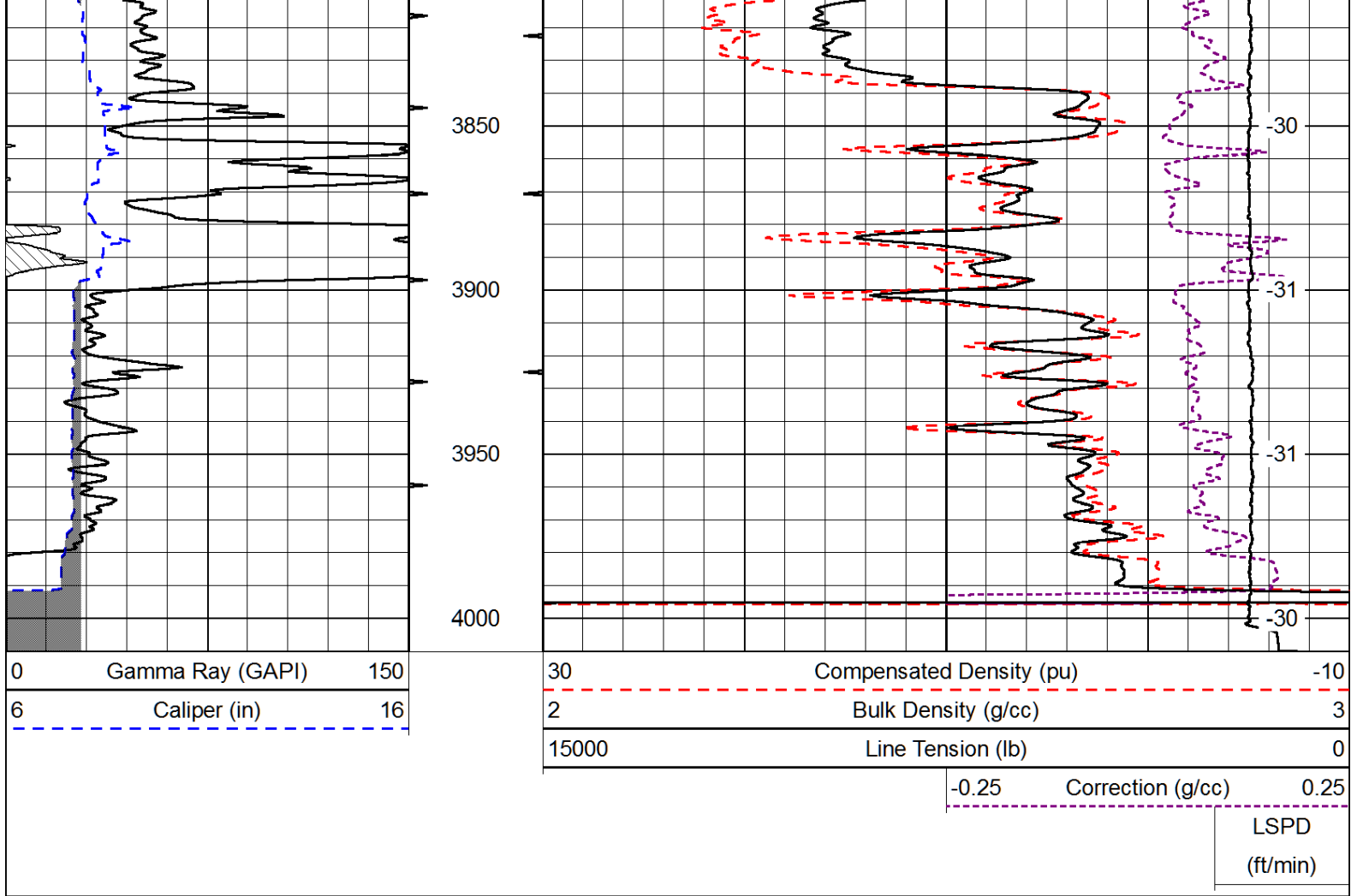
Database File: Id\_maryann\_1\_14hd.db  
 Dataset Pathname: DIL/ldstk  
 Presentation Format: cdl  
 Dataset Creation: Tue Apr 23 16:29:36 2013  
 Charted by: Depth in Feet scaled 1:600

0	Gamma Ray (GAPI)	150
6	Caliper (in)	16

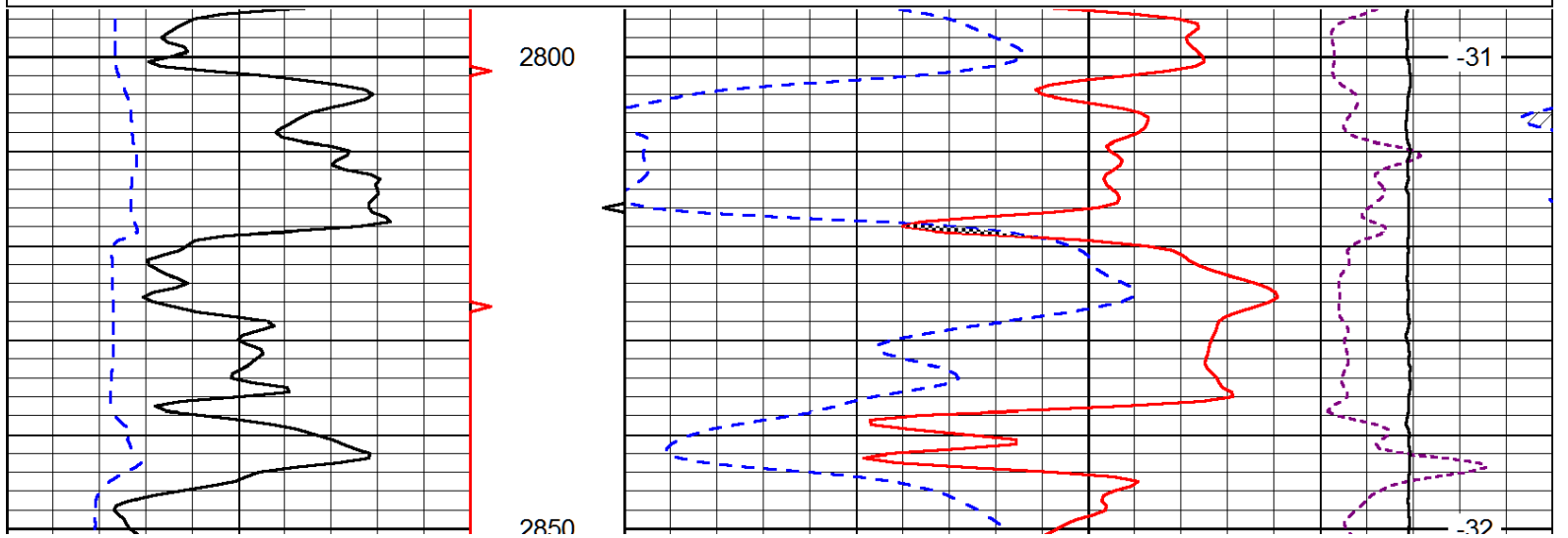
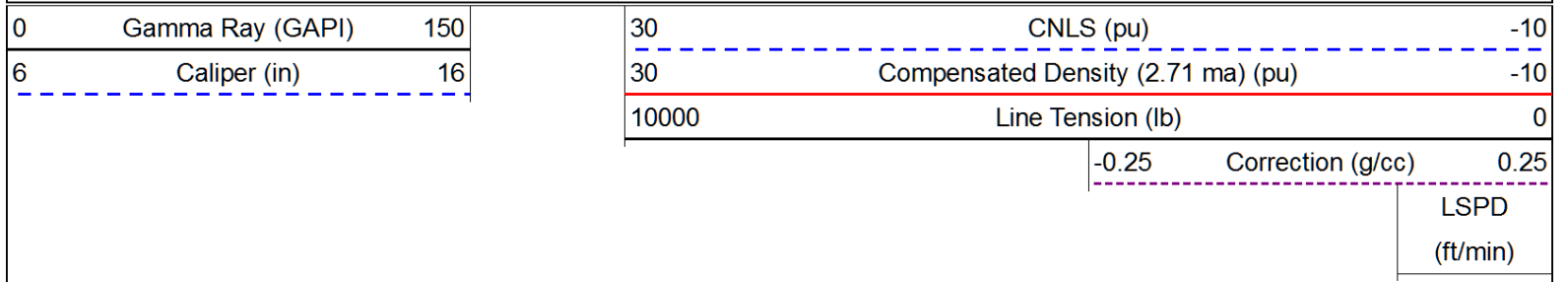
30	Compensated Density (pu)	-10
2	Bulk Density (g/cc)	3
15000	Line Tension (lb)	0
-0.25	Correction (g/cc)	0.25
		LSPD (ft/min)

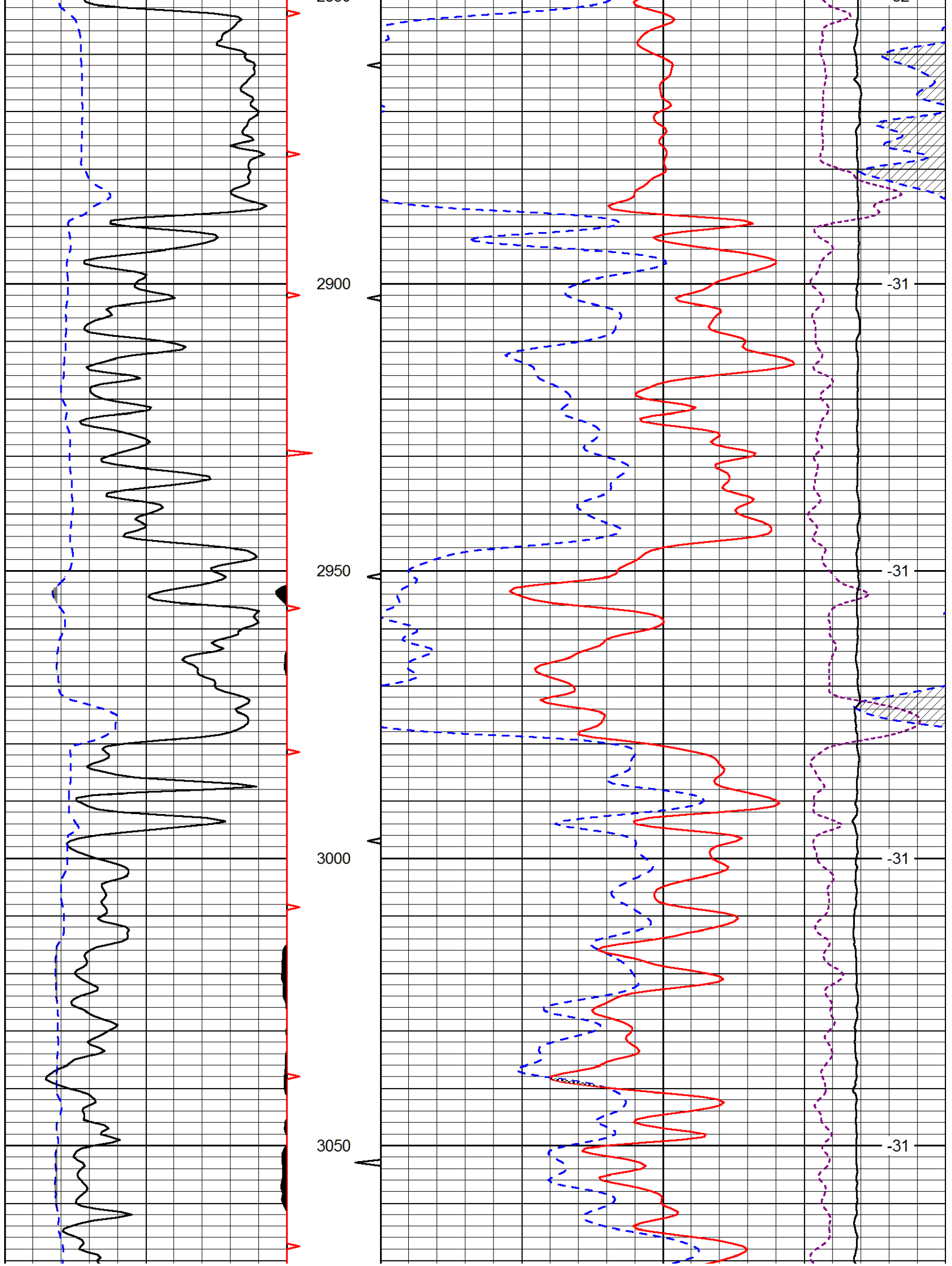


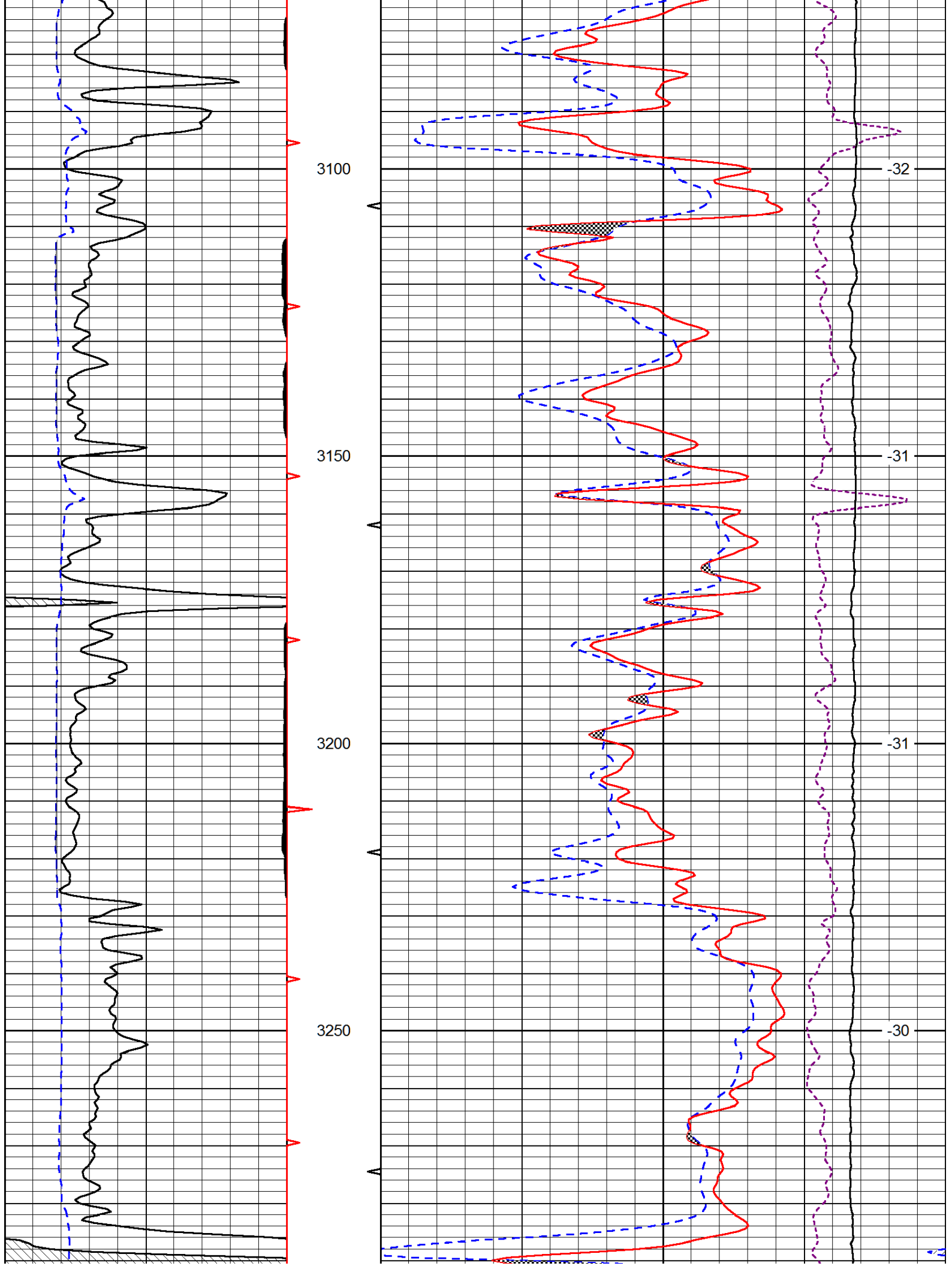


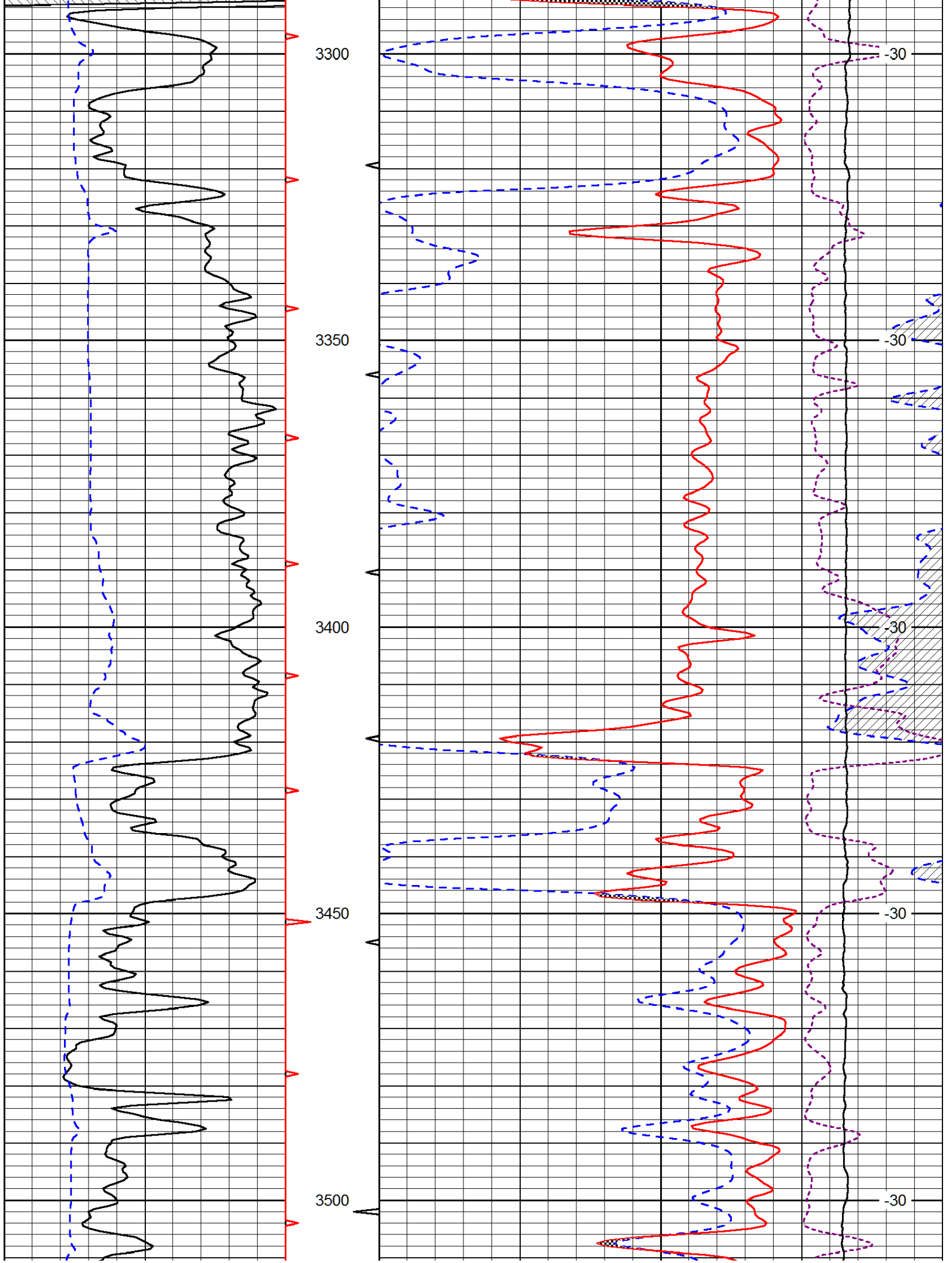


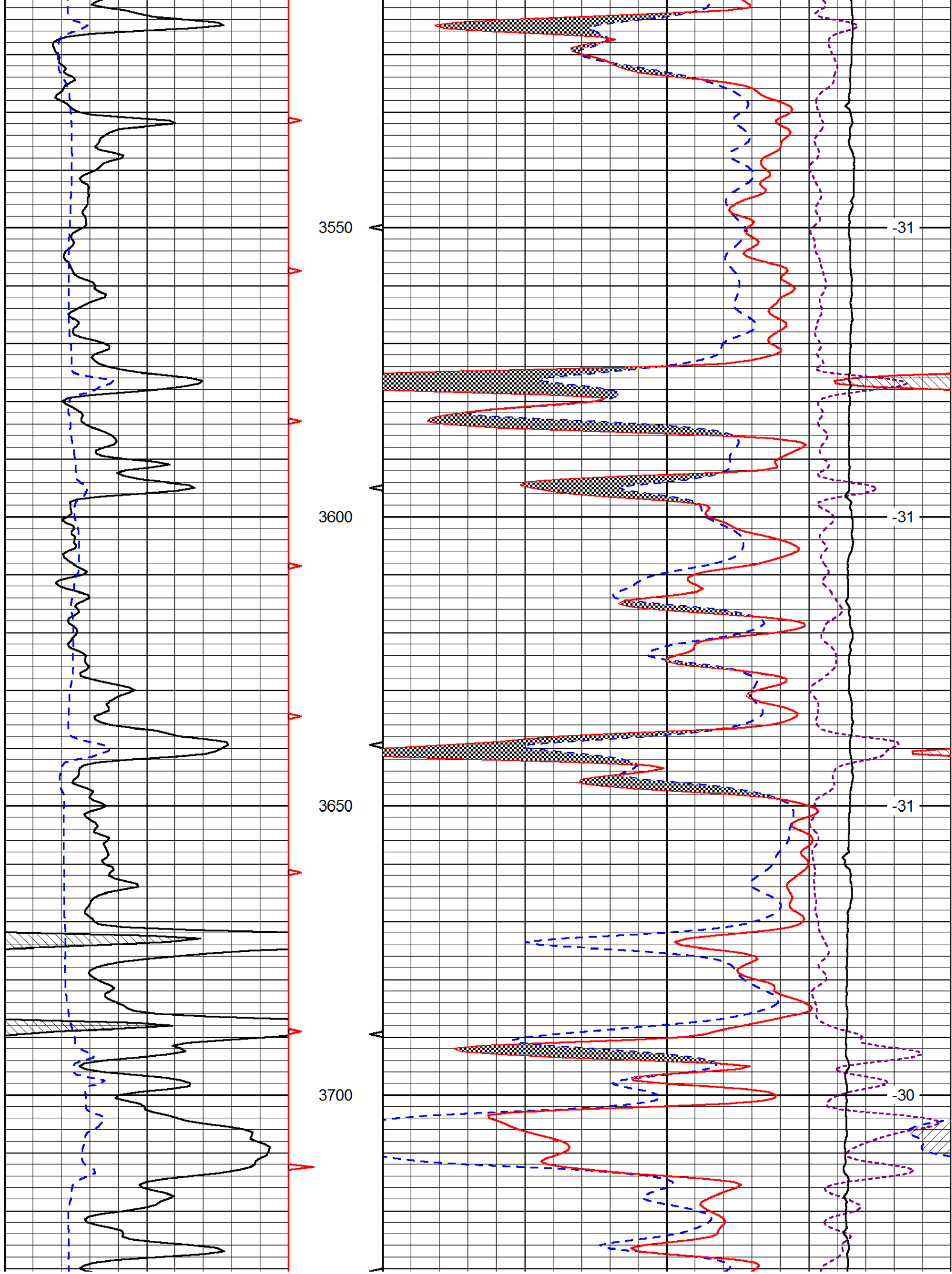
Database File: Id\_maryann\_1\_14hd.db  
 Dataset Pathname: DIL/ldstk  
 Presentation Format: cndlspec  
 Dataset Creation: Tue Apr 23 16:29:36 2013  
 Charted by: Depth in Feet scaled 1:240



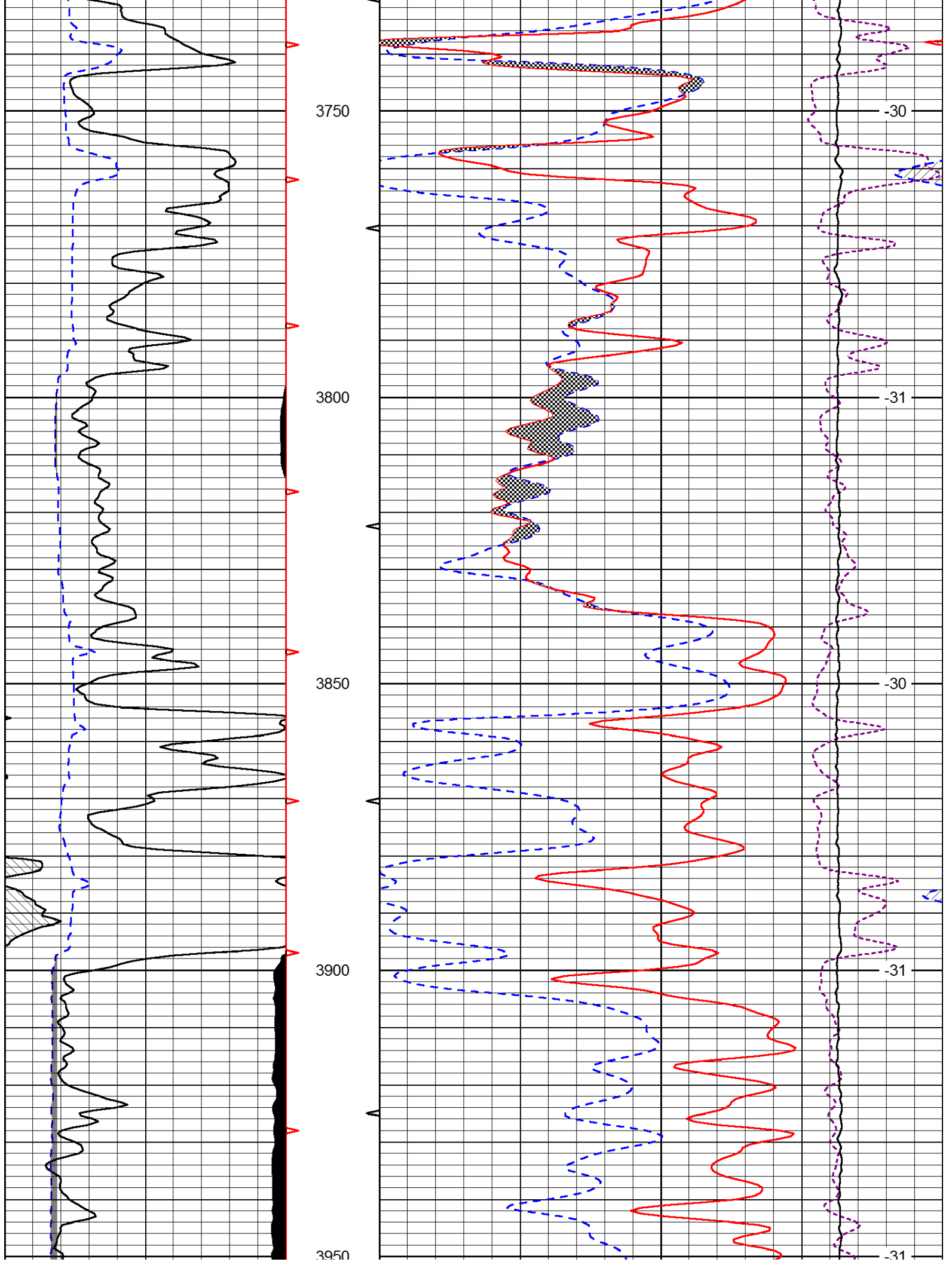


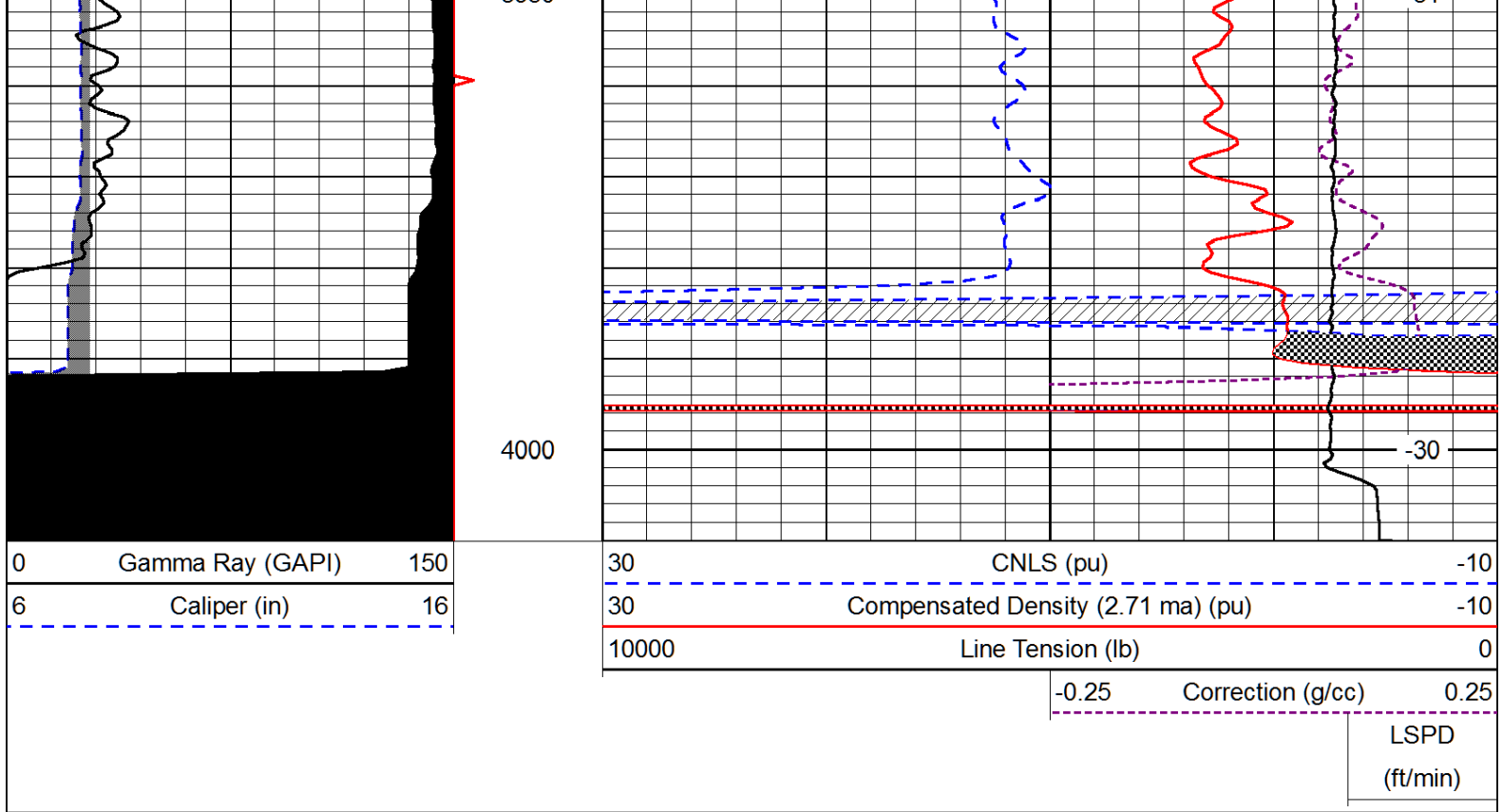








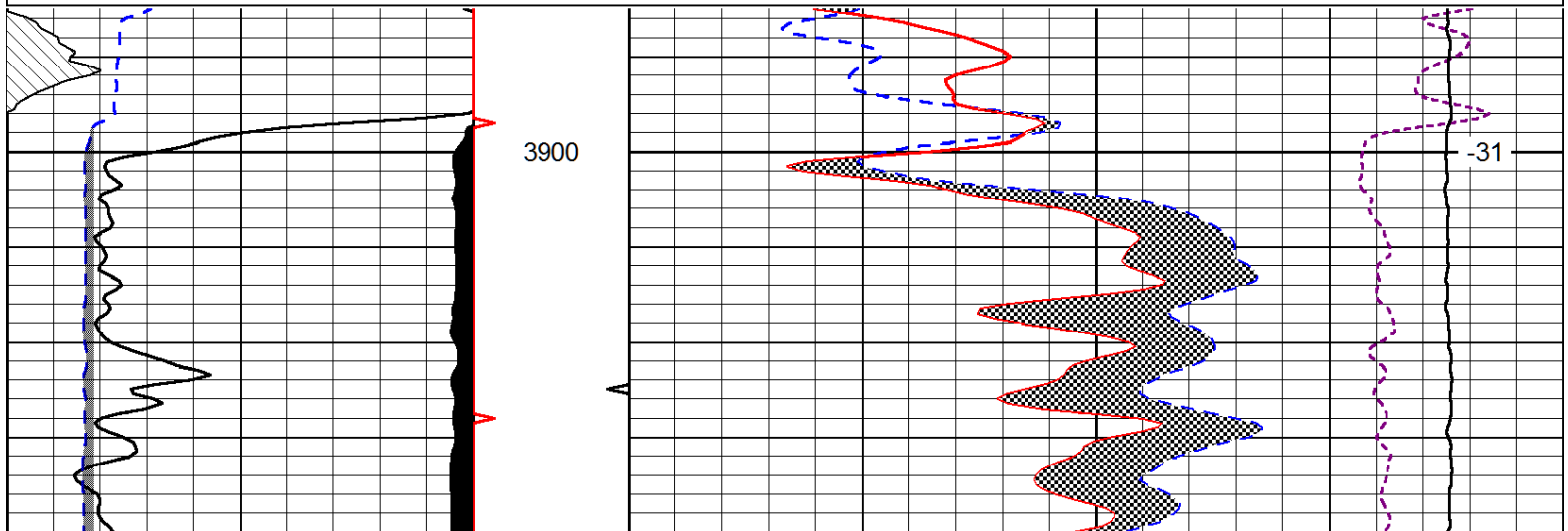
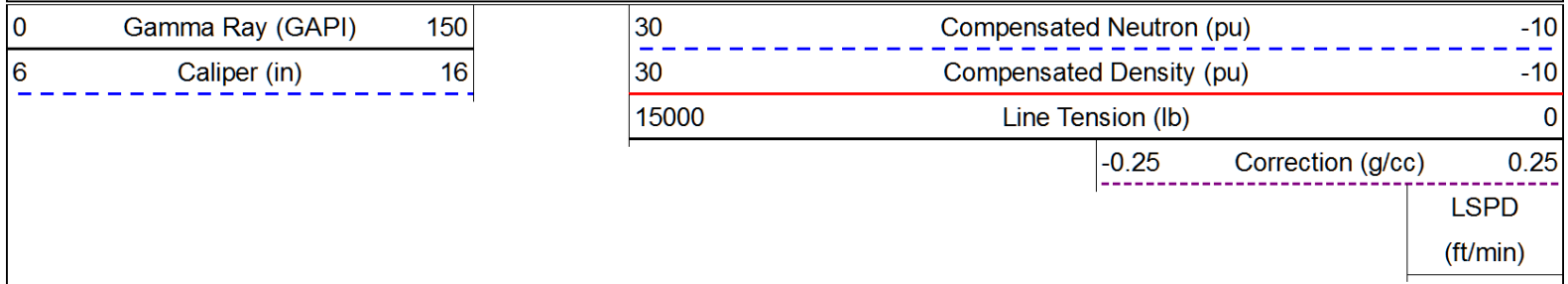


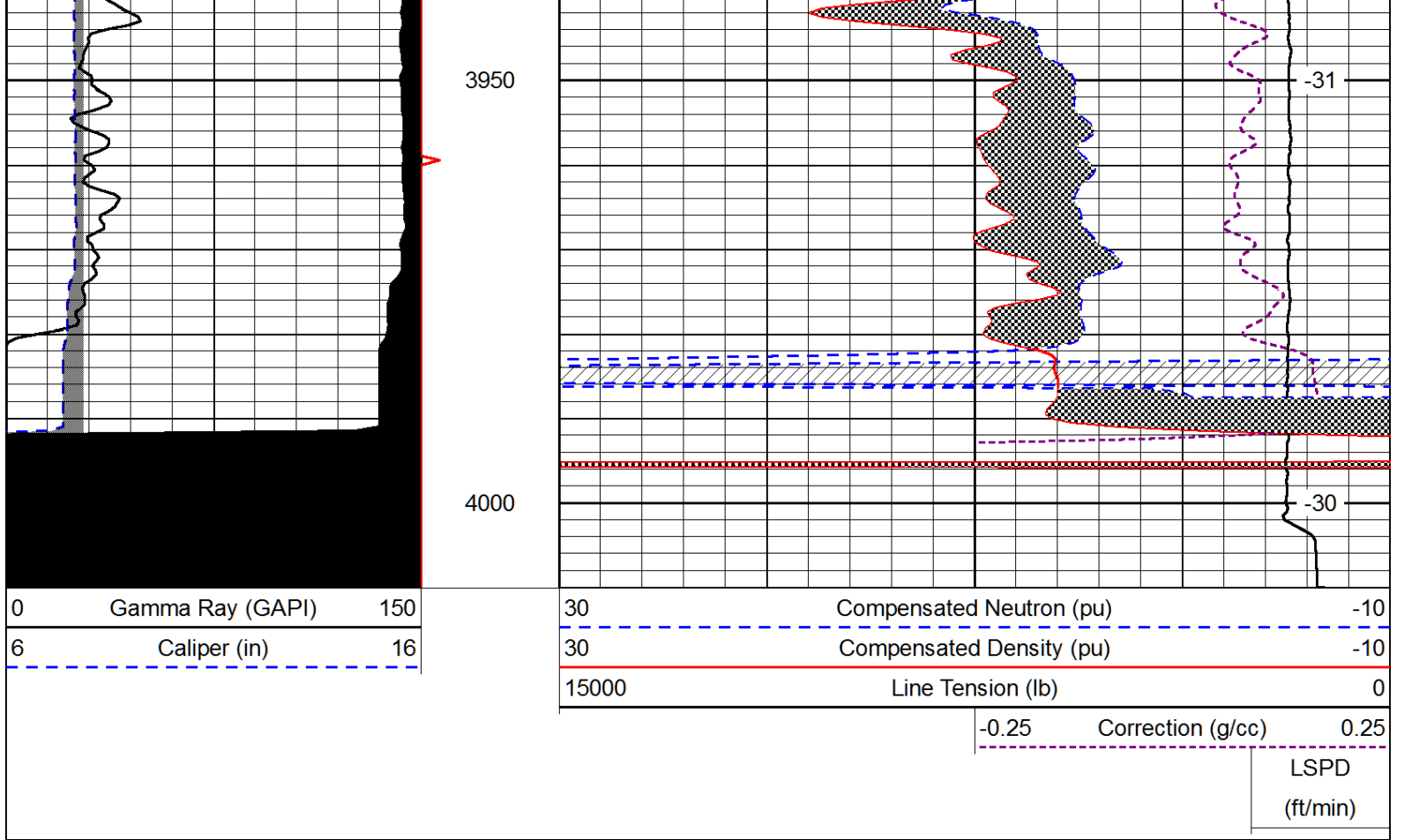




# Dolomite Matrix (2.83)

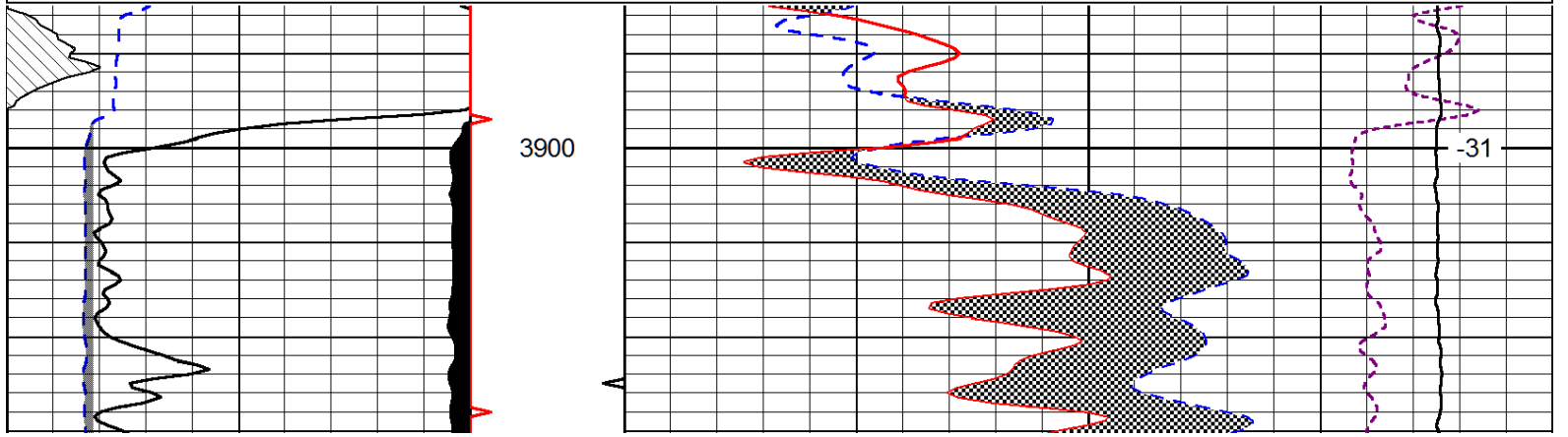
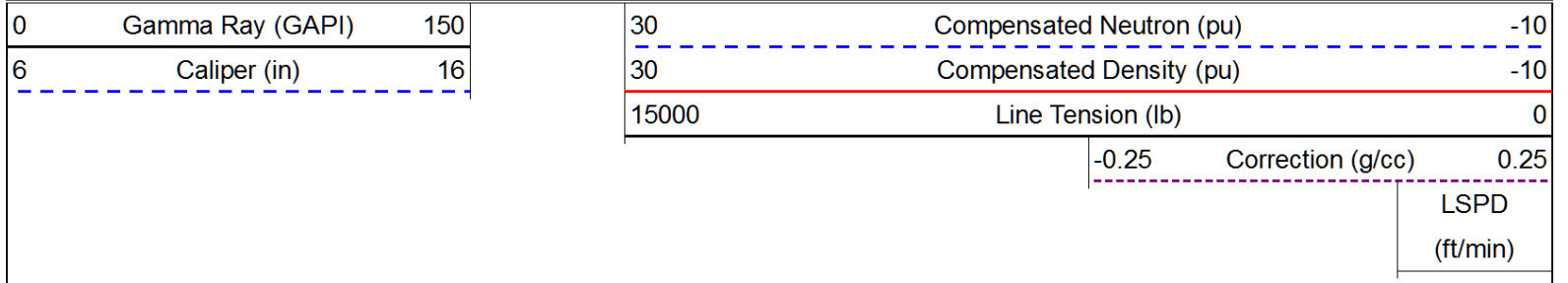
Database File: Id\_maryann\_1\_14hd.db  
 Dataset Pathname: DIL/lddol283  
 Presentation Format: cndldol  
 Dataset Creation: Tue Apr 23 16:29:35 2013  
 Charted by: Depth in Feet scaled 1:240

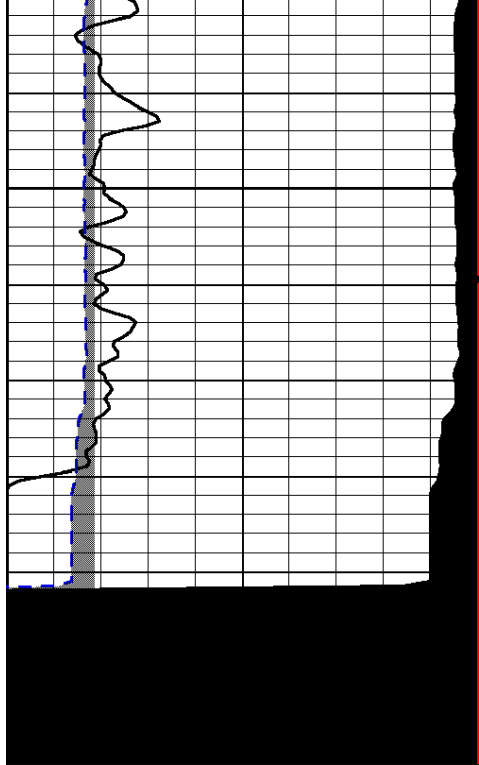





# Dolomite Matrix (2.87)

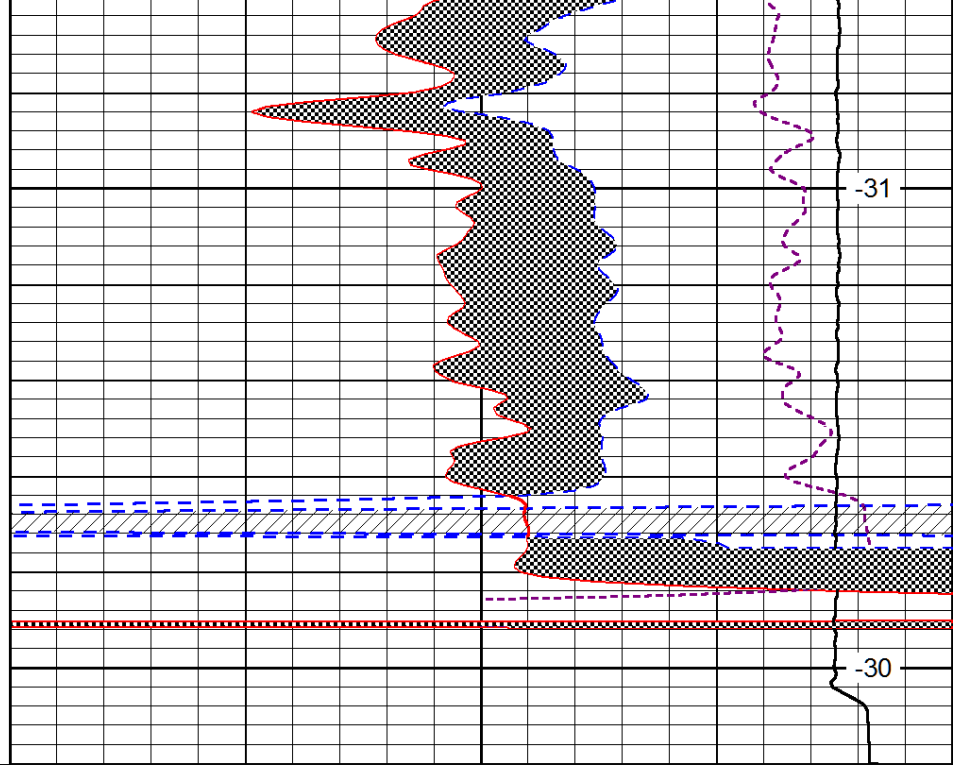
Database File: Id\_maryann\_1\_14hd.db  
 Dataset Pathname: DIL/lddol287  
 Presentation Format: cndldol  
 Dataset Creation: Tue Apr 23 16:29:36 2013  
 Charted by: Depth in Feet scaled 1:240





3950

4000



-31

-30

0	Gamma Ray (GAPI)	150
6	Caliper (in)	16

30	Compensated Neutron (pu)	-10
30	Compensated Density (pu)	-10
15000	Line Tension (lb)	0

-0.25	Correction (g/cc)	0.25
LSPD (ft/min)		