



Pioneer Energy Services

Microresistivity Log

API No.	15-185-23,805-00-00		
Company	L.D. Drilling, Inc.		
Well	Mary Ann #1-14		
Field	Wildcat		
County	Stafford	State	Kansas
Location	1526' FSL 1369' FEL		
Sec: 14	Twp: 23S	Rge: 13W	Other Services CNL/CDL DIL

Permanent Datum	Ground Level	Elevation	1874
Log Measured From	Kelly Bushing	5	Ft. Above Perm. Datum
Drilling Measured From	Kelly Bushing		
Date	4/23/2013		
Run Number	Two		
Depth Driller	4000		
Depth Logger	4002		
Bottom Logged Interval	4001		
Top Log Interval	2800		
Casing Driller	8.625 @ 347		
Casing Logger	345		
Bit Size	7.875		
Type Fluid in Hole	Chemical		
Salinity, ppm CL	8000		
Density / Viscosity	8.9	55	
pH / Fluid Loss	9.5	10.8	
Source of Sample	Flowline		
Rm @ Meas. Temp	.35	@	58
Rmf @ Meas. Temp	.26	@	58
Rmc @ Meas. Temp	.47	@	58
Source of Rmf / Rmc	Charts		
Rm @ BHT	.18	@	116
Operating Rig Time	4 Hours		
Max Rec. Temp. F	116		
Equipment Number	15		
Location	Hays		
Recorded By	D.Kerr		
Witnessed By	Kim Shoemaker		

<<< Fold Here >>>

All interpretations are opinions based on inferences from electrical or other measurements and we cannot and do not guarantee the accuracy or correctness of any interpretation, and we shall not, except in the case of gross or willful negligence on our part, be liable or responsible for any loss, costs, damages, or expenses incurred or sustained by anyone resulting from any interpretation made by any of our officers, agents or employees. These interpretations are also subject to our general terms and conditions set out in our current Price Schedule.

Comments

Thank you for using Log-Tech, Inc.
(785) 625-3858

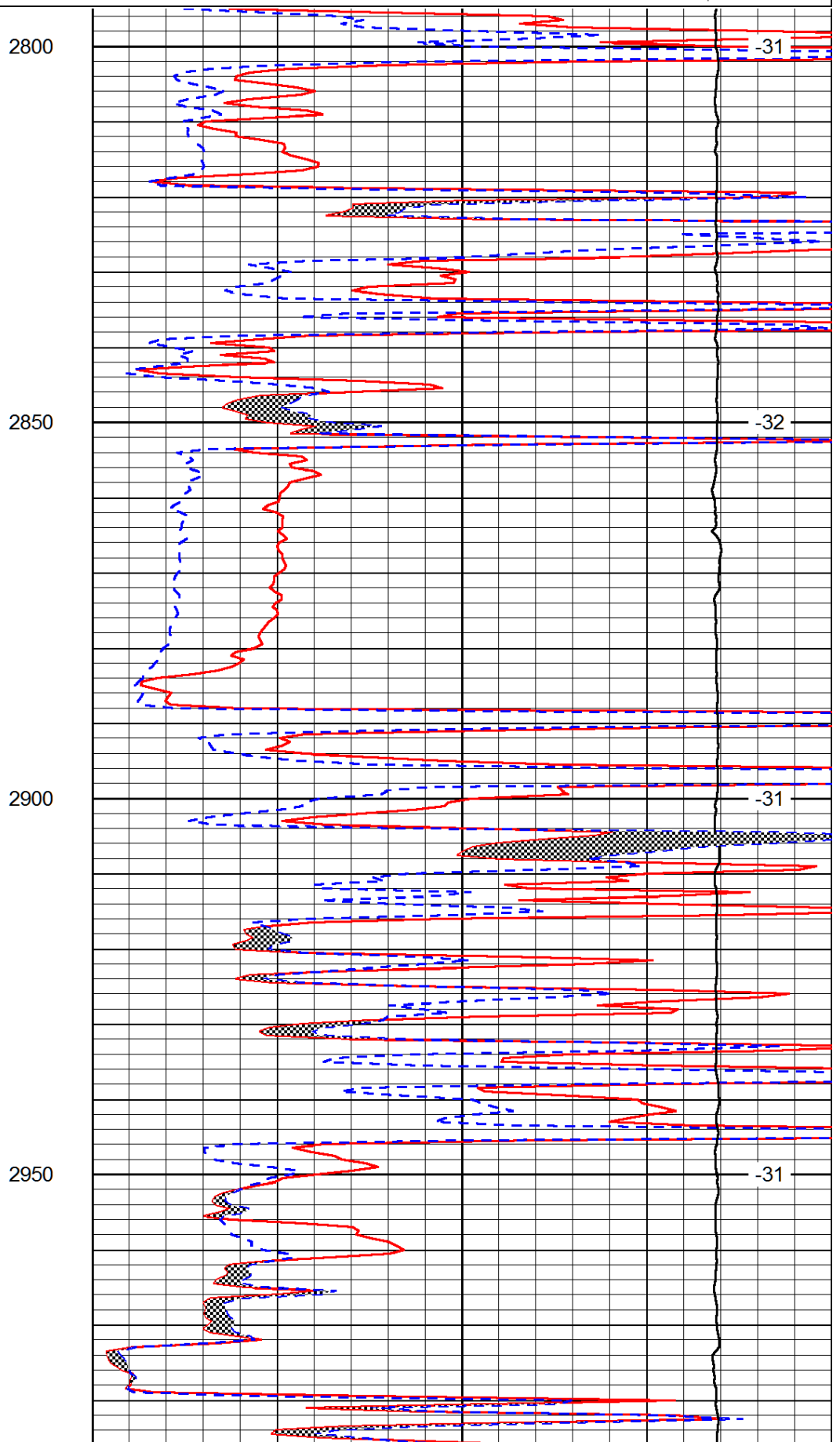
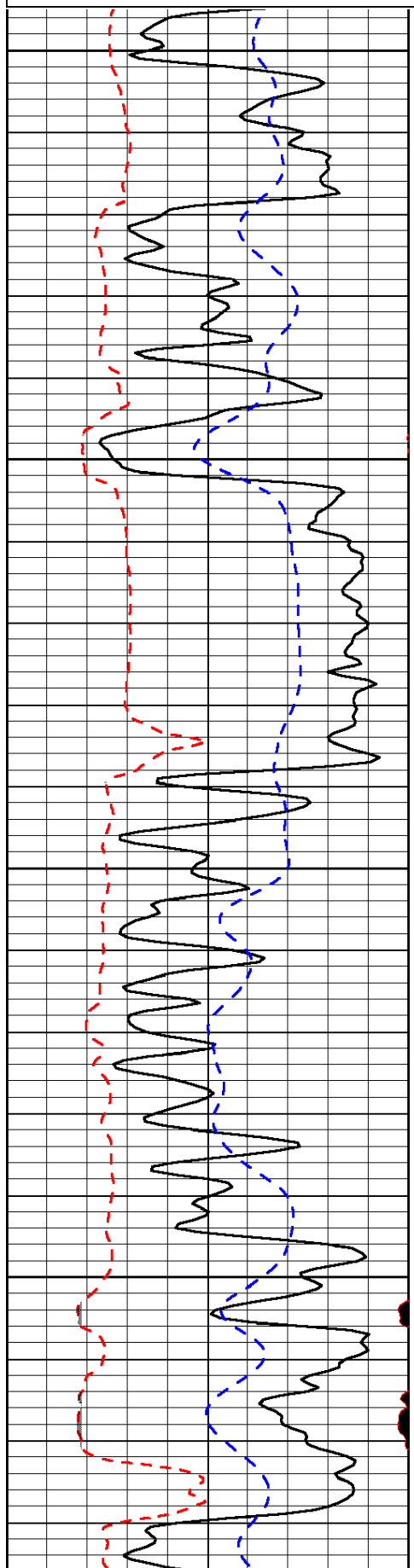
St.John KS, North to 70 RD,
2 East, 1 South, 1/2 West, North Into

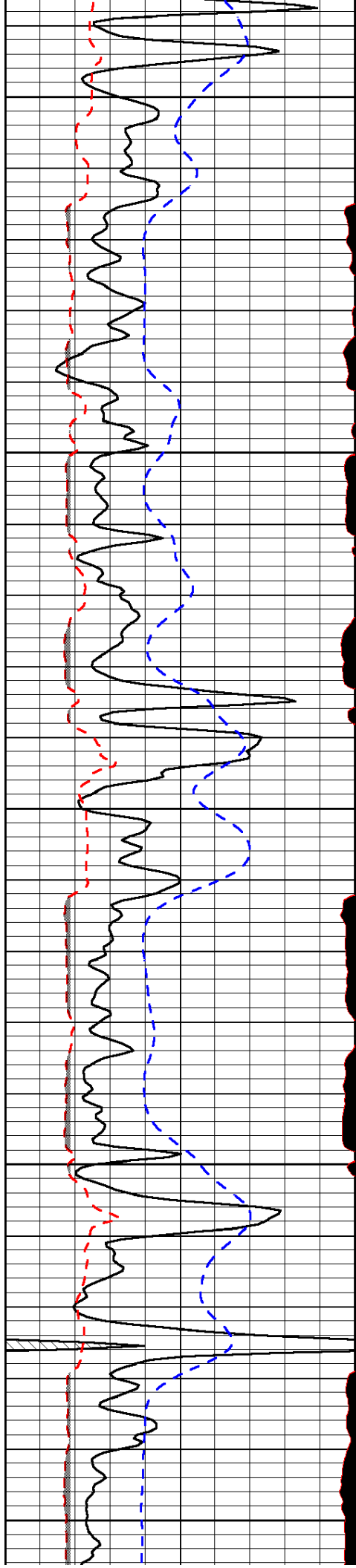
Database File: Id_maryann_1_14hd.db
 Dataset Pathname: DIL/ldstk
 Presentation Format: micro
 Dataset Creation: Tue Apr 23 16:29:36 2013
 Charted by: Depth in Feet scaled 1:240

0	Gamma Ray (GAPI)	150
6	MCAL (in)	16
2.875	Mud Cake (in)	7.875
-200	SP (mV)	0

0	Micro Inverse 1 X 1 (Ohm-m)	40
0	Micro Normal 2" (Ohm-m)	40
10000	Line Weight (lb)	0

LSPD
(ft/min)





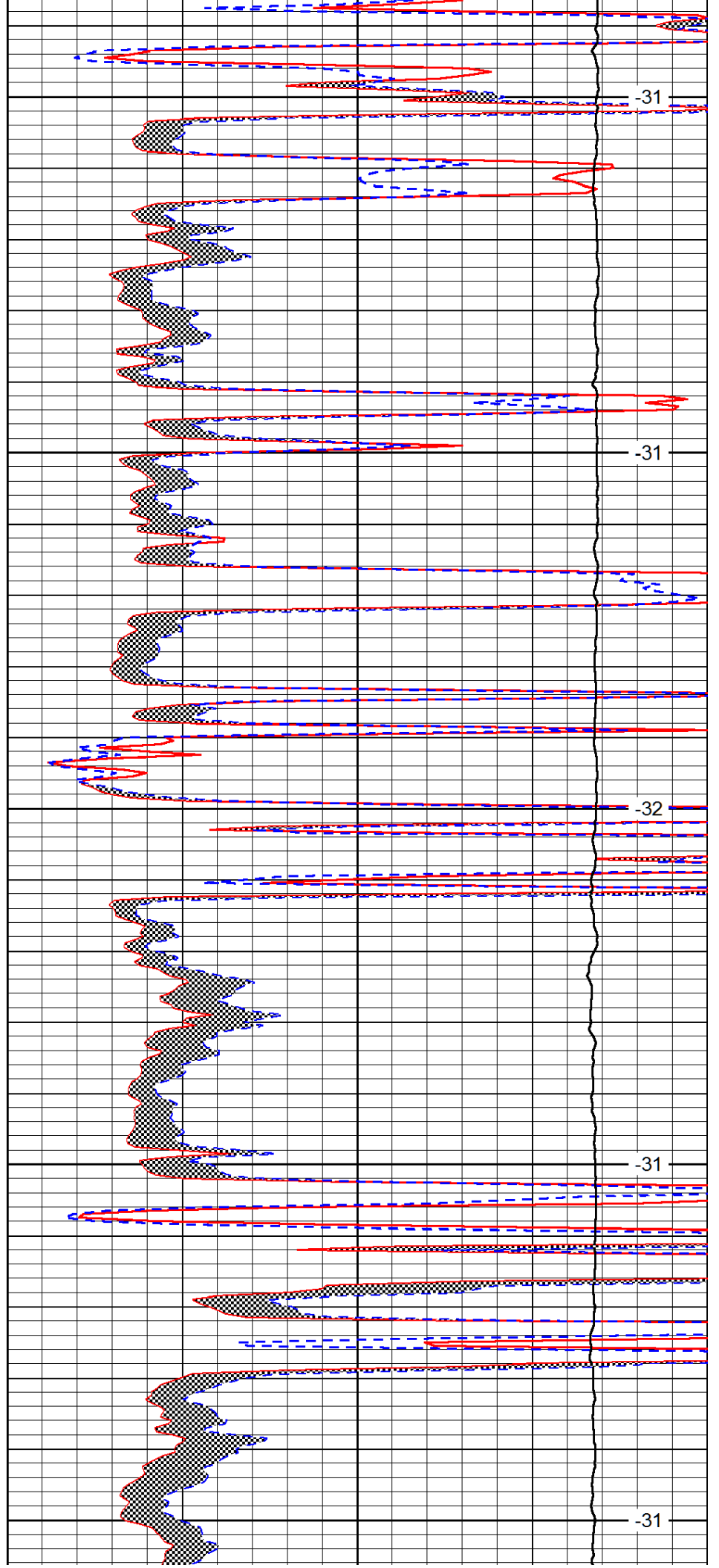
3000

3050

3100

3150

3200



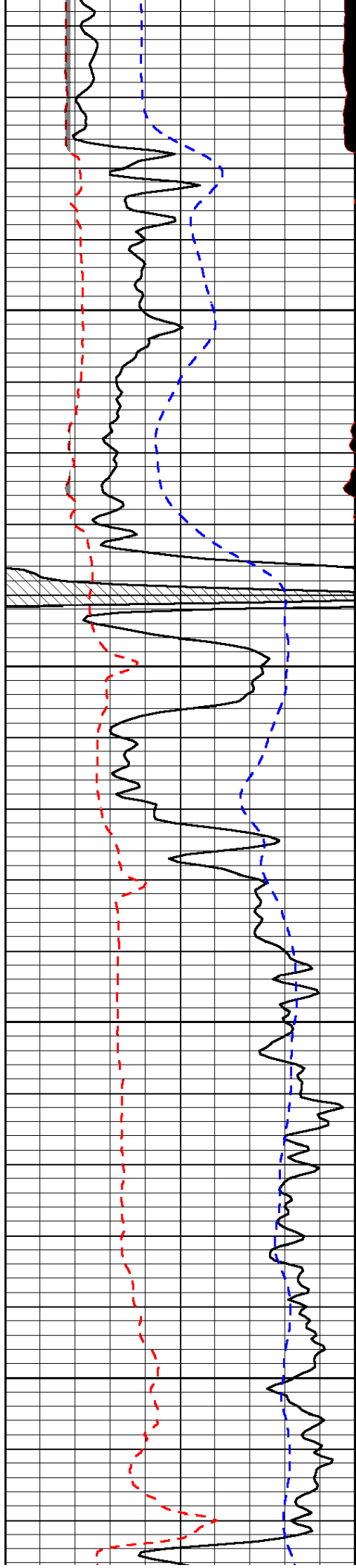
-31

-31

-32

-31

-31

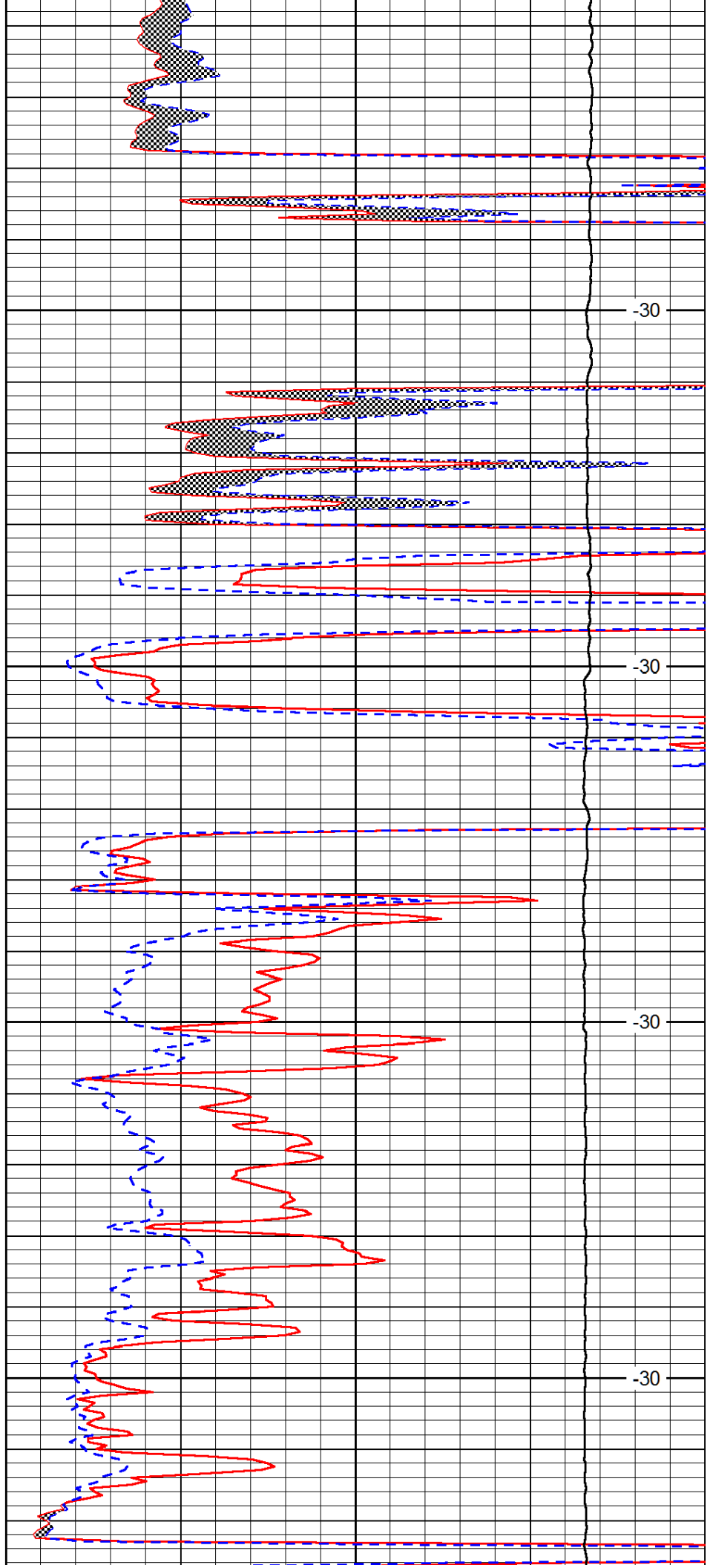


3250

3300

3350

3400

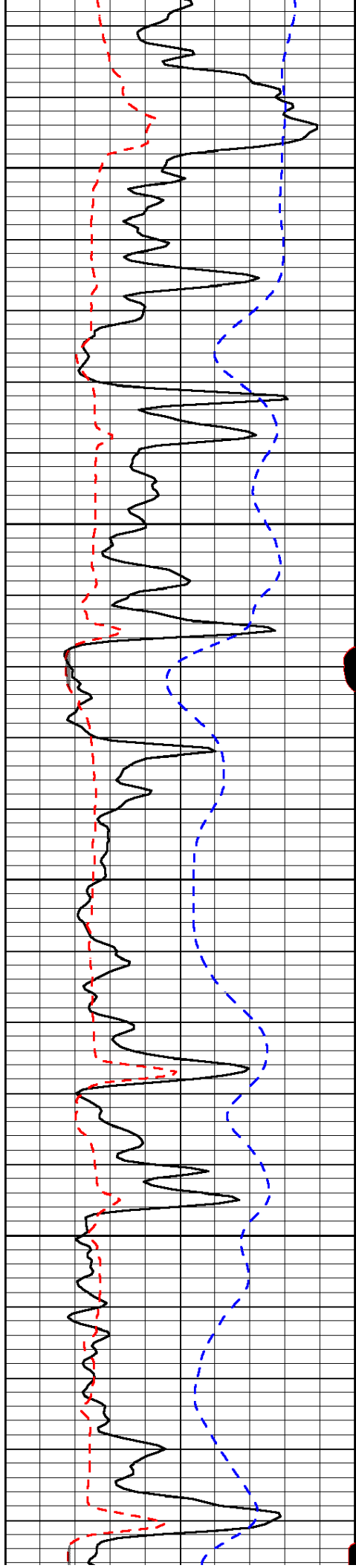


-30

-30

-30

-30

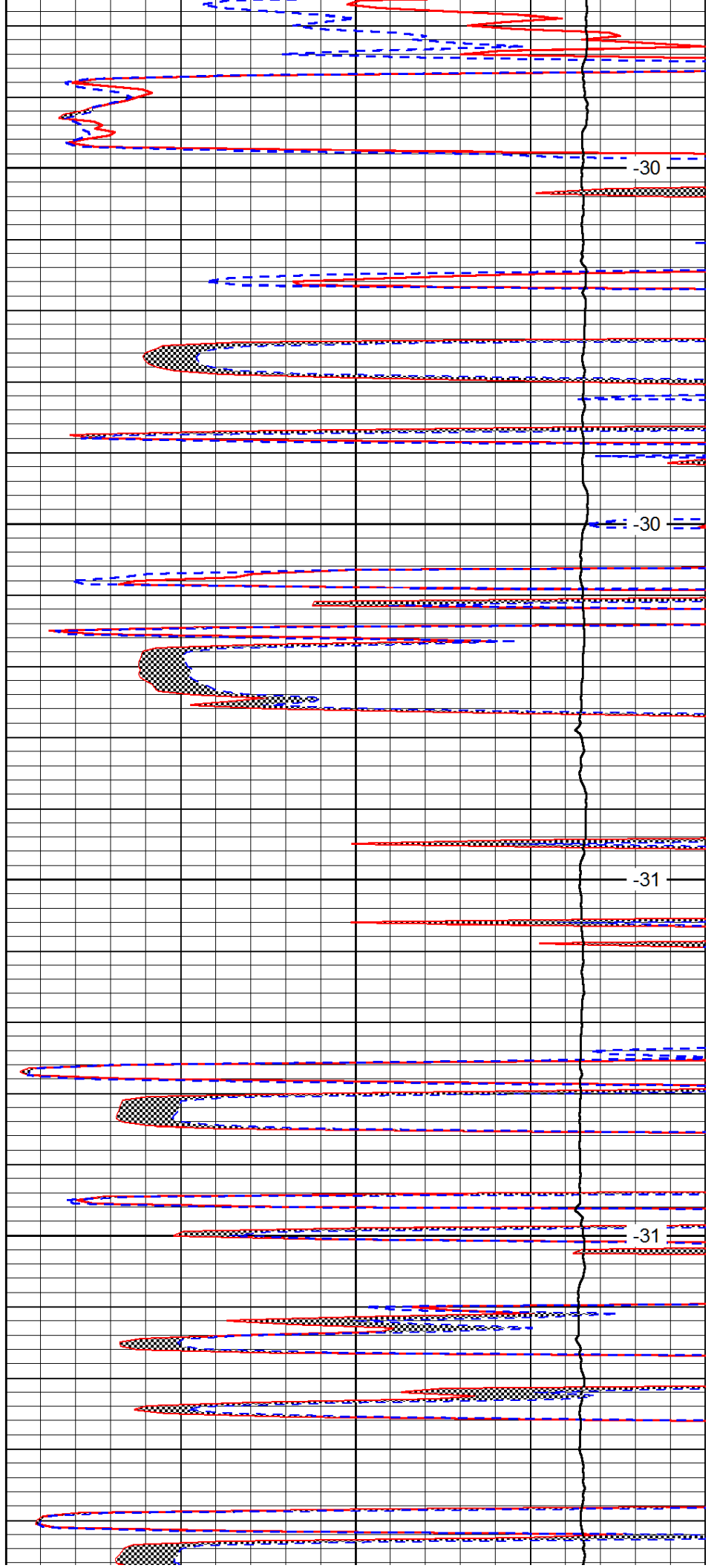


3450

3500

3550

3600

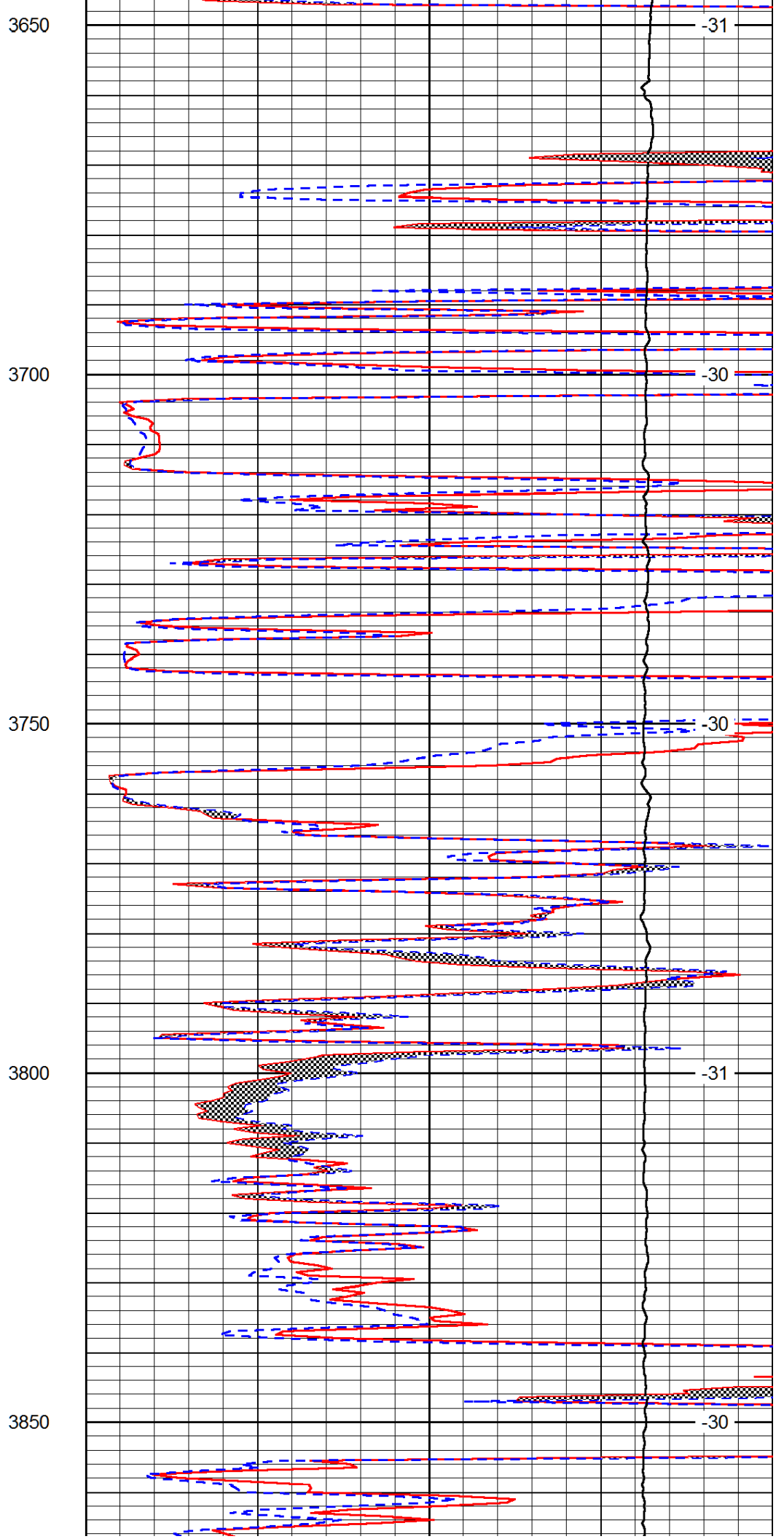
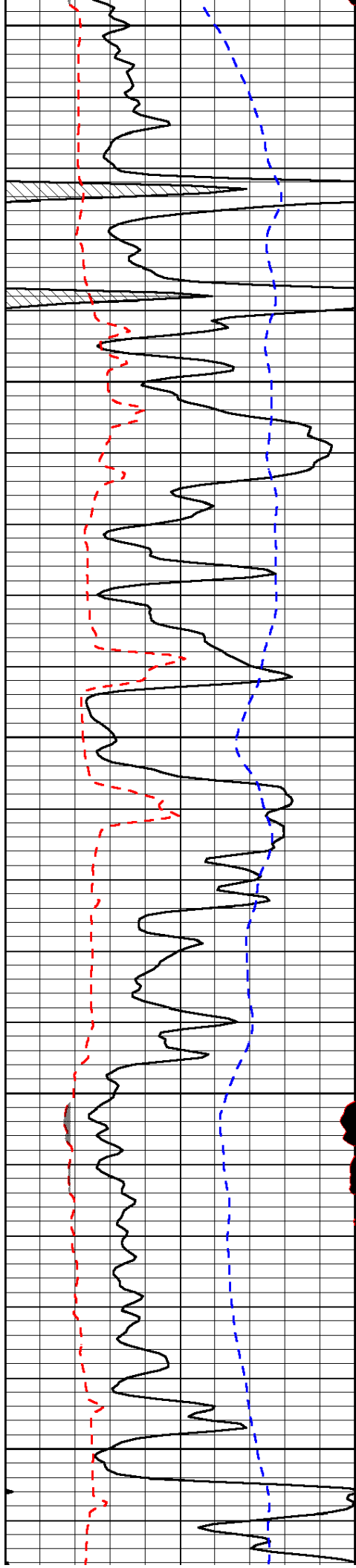


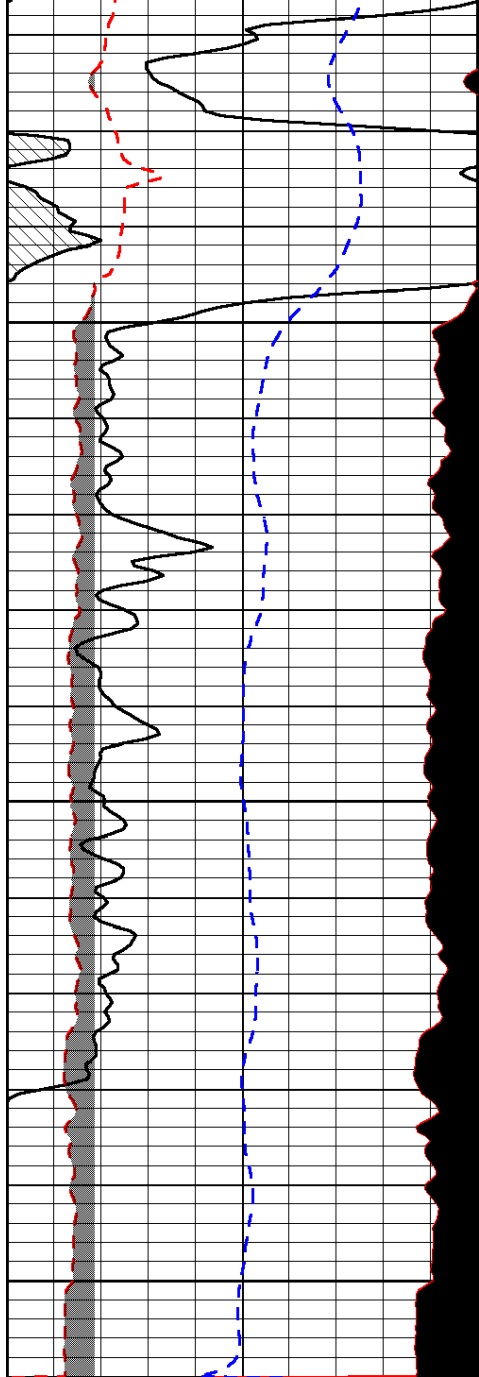
-30

-30

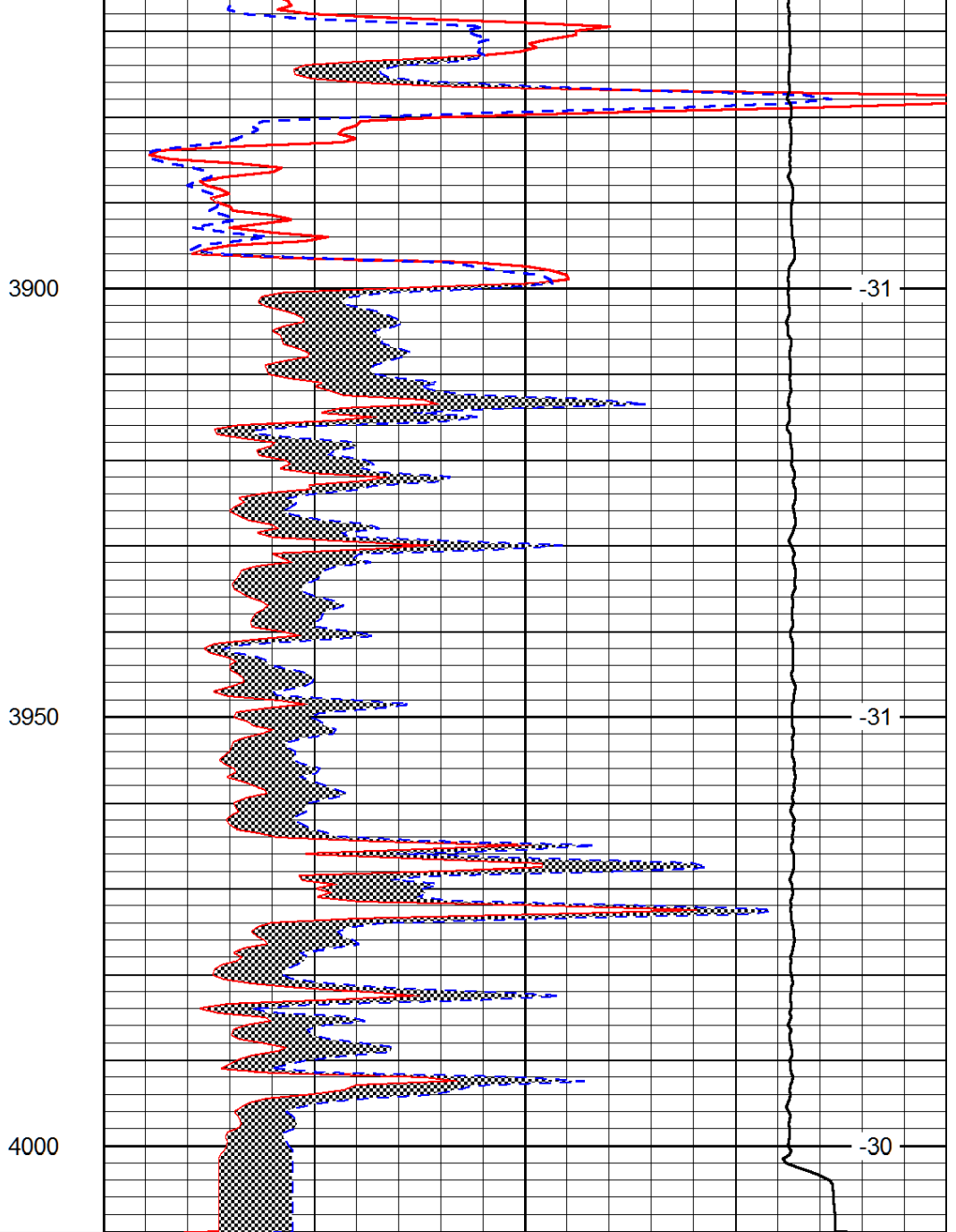
-31

-31





0	Gamma Ray (GAPI)	150
6	MCAL (in)	16
2.875	Mud Cake (in)	7.875
-200	SP (mV)	0



0	Micro Inverse 1 X 1 (Ohm-m)	40
0	Micro Normal 2" (Ohm-m)	40
10000	Line Weight (lb)	0

LSPD
(ft/min)