



Pioneer Energy Services

Dual Compensated Porosity Log

15-185-23,816-00-00

API No.	15-185-23,816-00-00		
Company	H&D Exploration, LLC		
Well	Fritzemeier #1		
Field	Wildcat		
County	Stafford	State	Kansas
Location	W2 NE NE NE 330' FNL & 425' FEL		
Sec: 20	Twp: 25S	Rge: 12W	Elevation 1874
Log Measured From	Kelly Bushing	10 Ft. Above Perm. Datum	K.B. 1884
Drilling Measured From	Kelly Bushing		D.F. 1874
			G.L. 1874

Date	7/1/2013		
Run Number	One		
Type Log	CNL / CDL		
Depth Driller	4240		
Depth Logger	4239		
Bottom Logged Interval	4218		
Top Logged Interval	2800		
Type Fluid In Hole	Chemical		
Salinity, PPM CL	8000		
Density Level	9.4		
Max. Rec. Temp. F	118		
Operating Rig Time	4 Hours		
Equipment -- Location	108	Hays	
Recorded By	J. Long		
Witnessed By	Josh Austin		

Borehole Record				Casing Record			
Run No.	Bit	From	To	Size	Wgt.	From	To
1	12.25	00	717	8.625	24#	00	717
2	7.875	717	4240				

<<< Fold Here >>>

All interpretations are opinions based on inferences from electrical or other measurements and we cannot and do not guarantee the accuracy or correctness of any interpretation, and we shall not, except in the case of gross or willful negligence on our part, be liable or responsible for any loss, costs, damages, or expenses incurred or sustained by anyone resulting from any interpretation made by any of our officers, agents or employees. These interpretations are also subject to our general terms and conditions set out in our current Price Schedule.

Comments

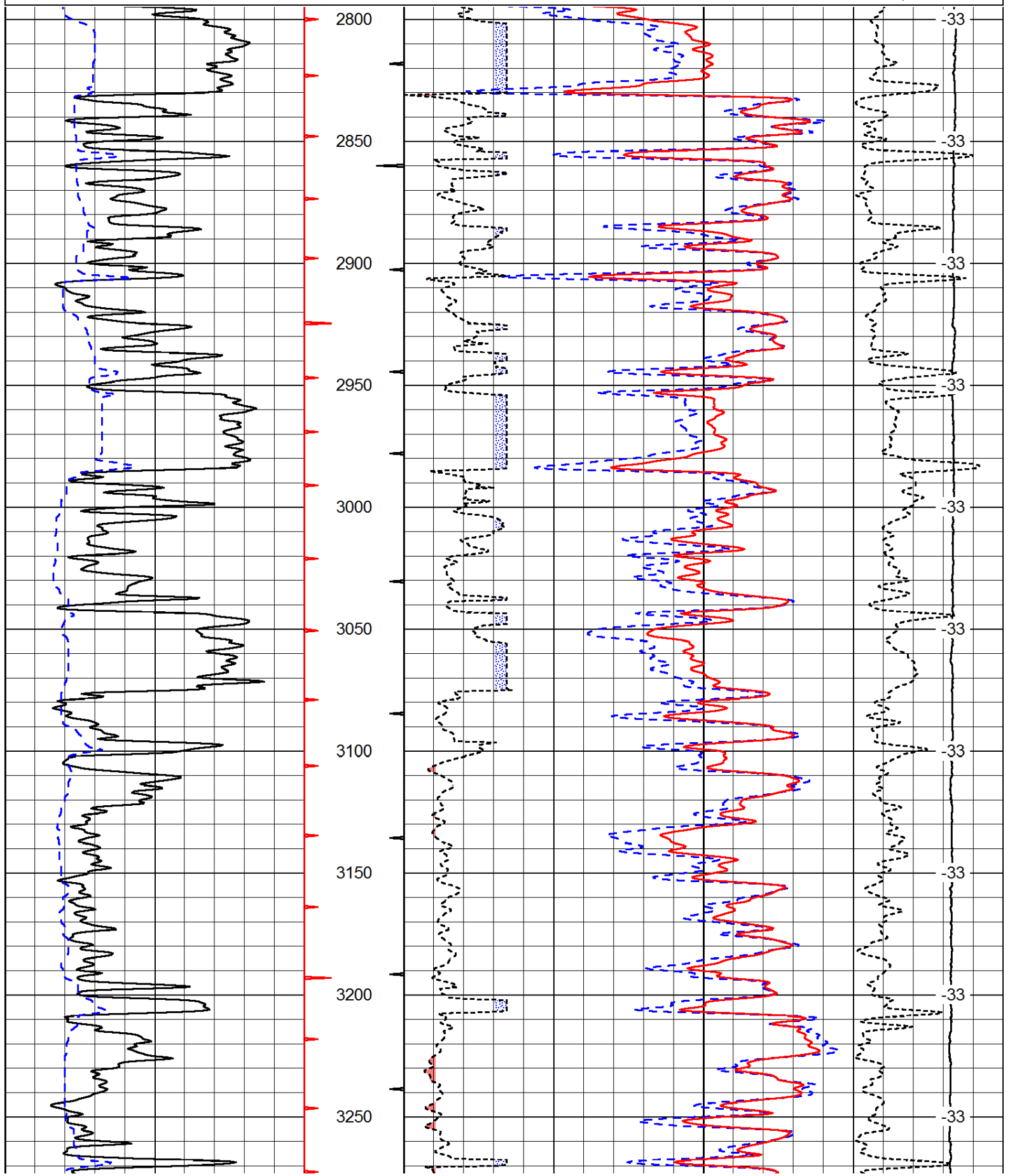
Thank you for using Pioneer Energy Services
www.pioneerenergy.com
 785 625 3858

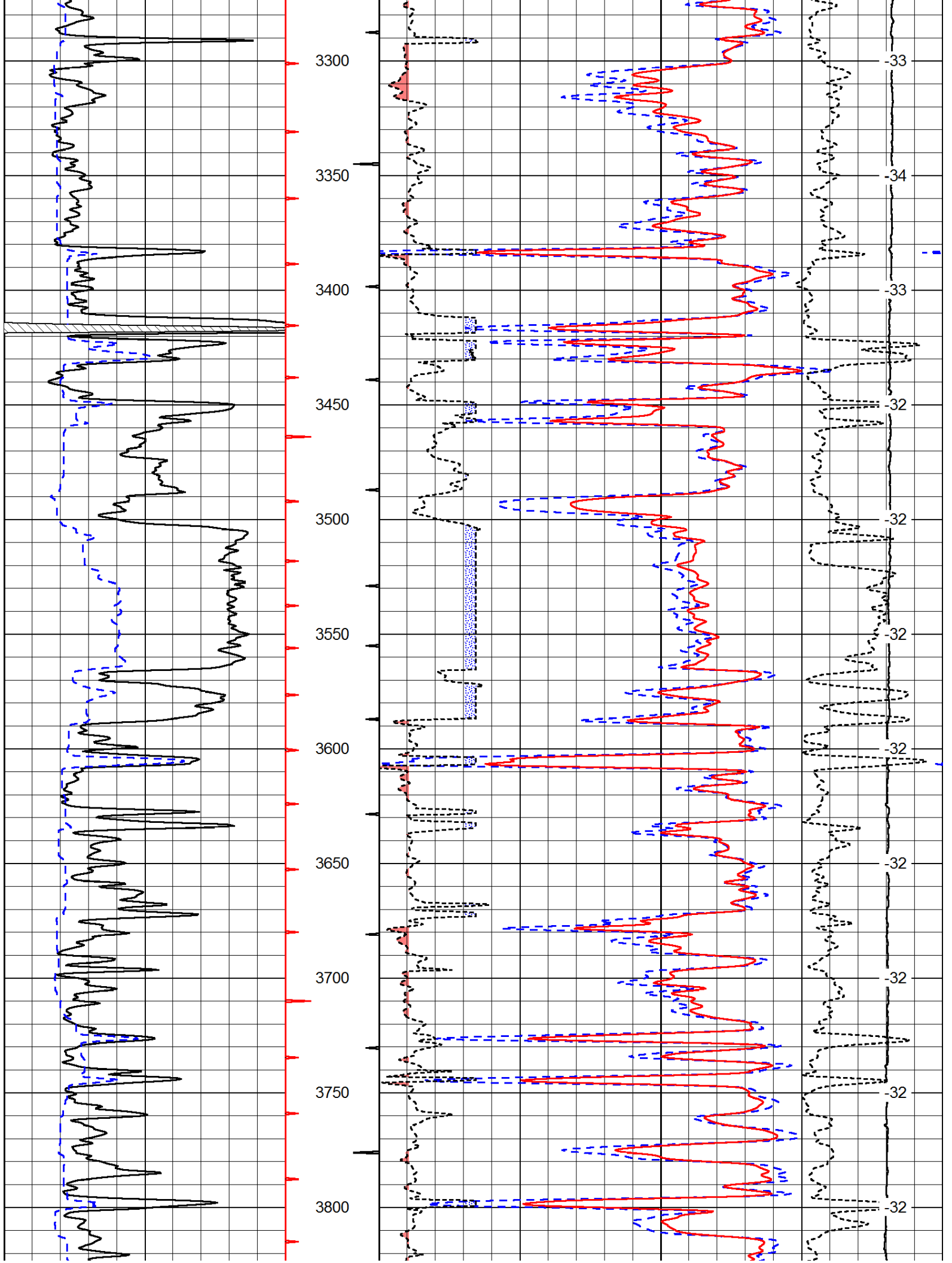
 Stafford, 6 South to 60 Road, 3 West, South Into

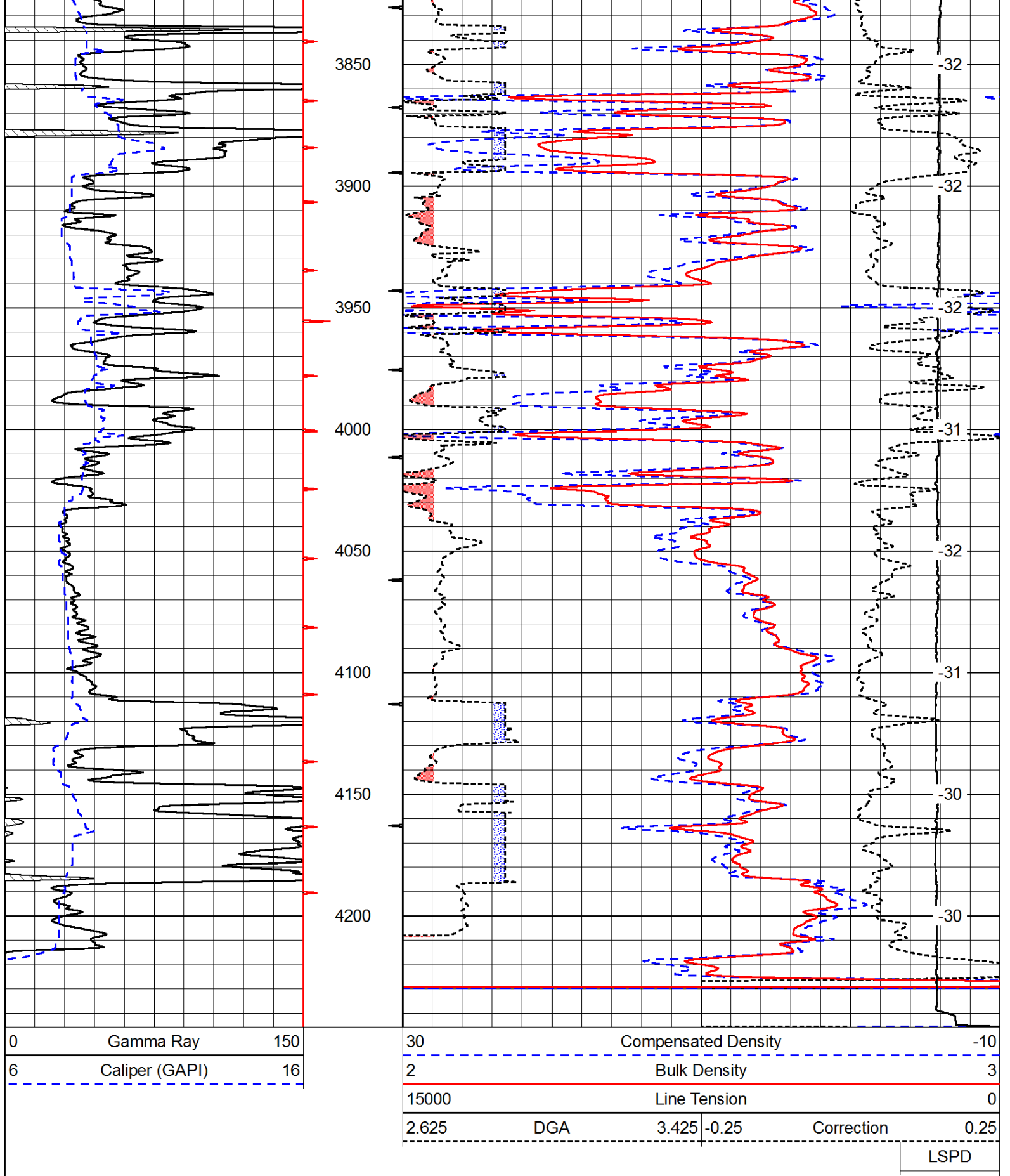
Database File: c:\warrior\data\h&d_fritzemeier # 1\h&d_fritzemeier_1hd.db
 Dataset Pathname: dil/hdstck
 Presentation Format: cdl
 Dataset Creation: Mon Jul 01 03:32:16 2013
 Charted by: Depth in Feet scaled 1:600

0	Gamma Ray	150
6	Caliper (GAPI)	16

30	Compensated Density		-10
2	Bulk Density		3
15000	Line Tension		0
2.625	DGA	3.425	-0.25
			Correction
			0.25
LSPD			





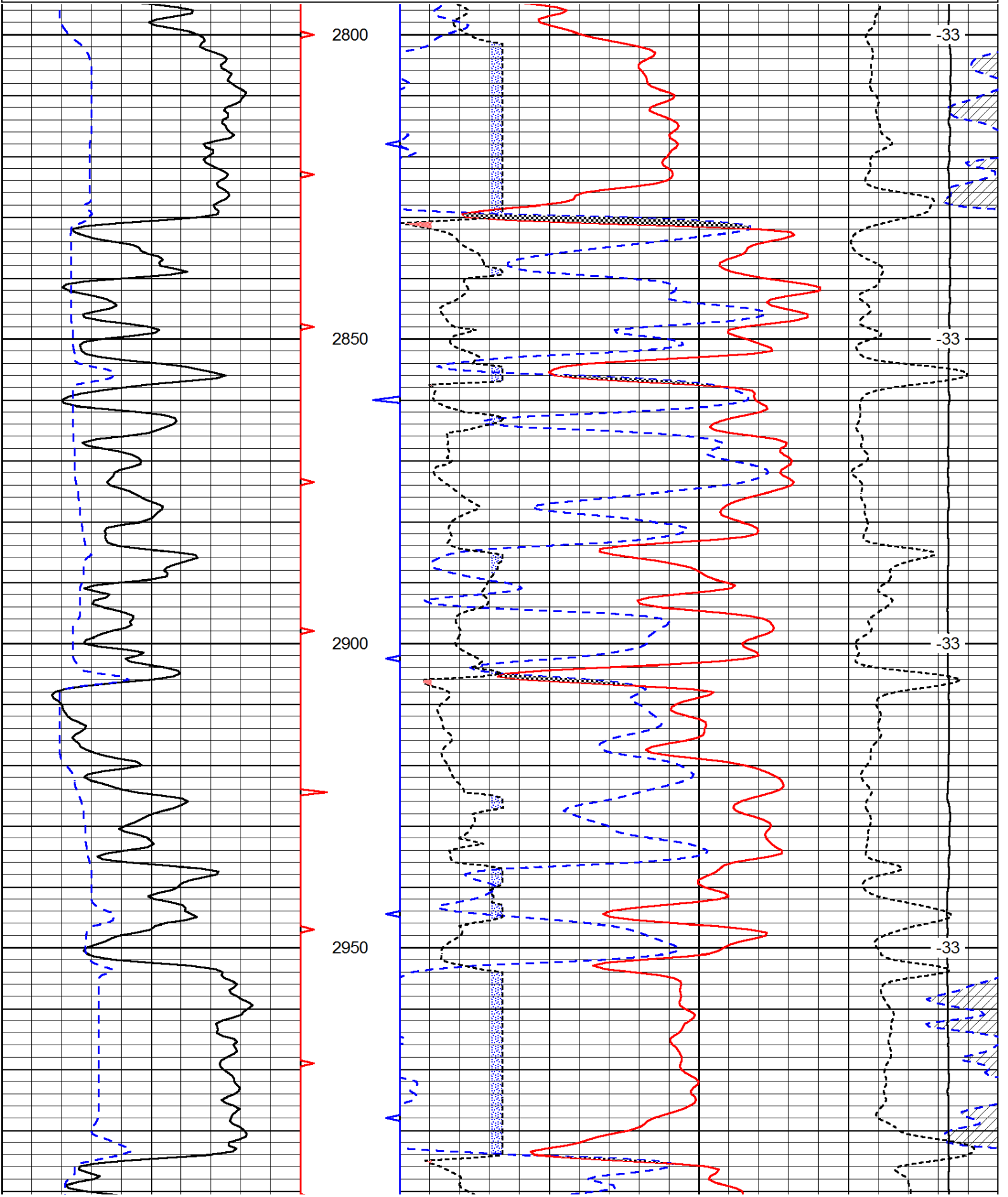


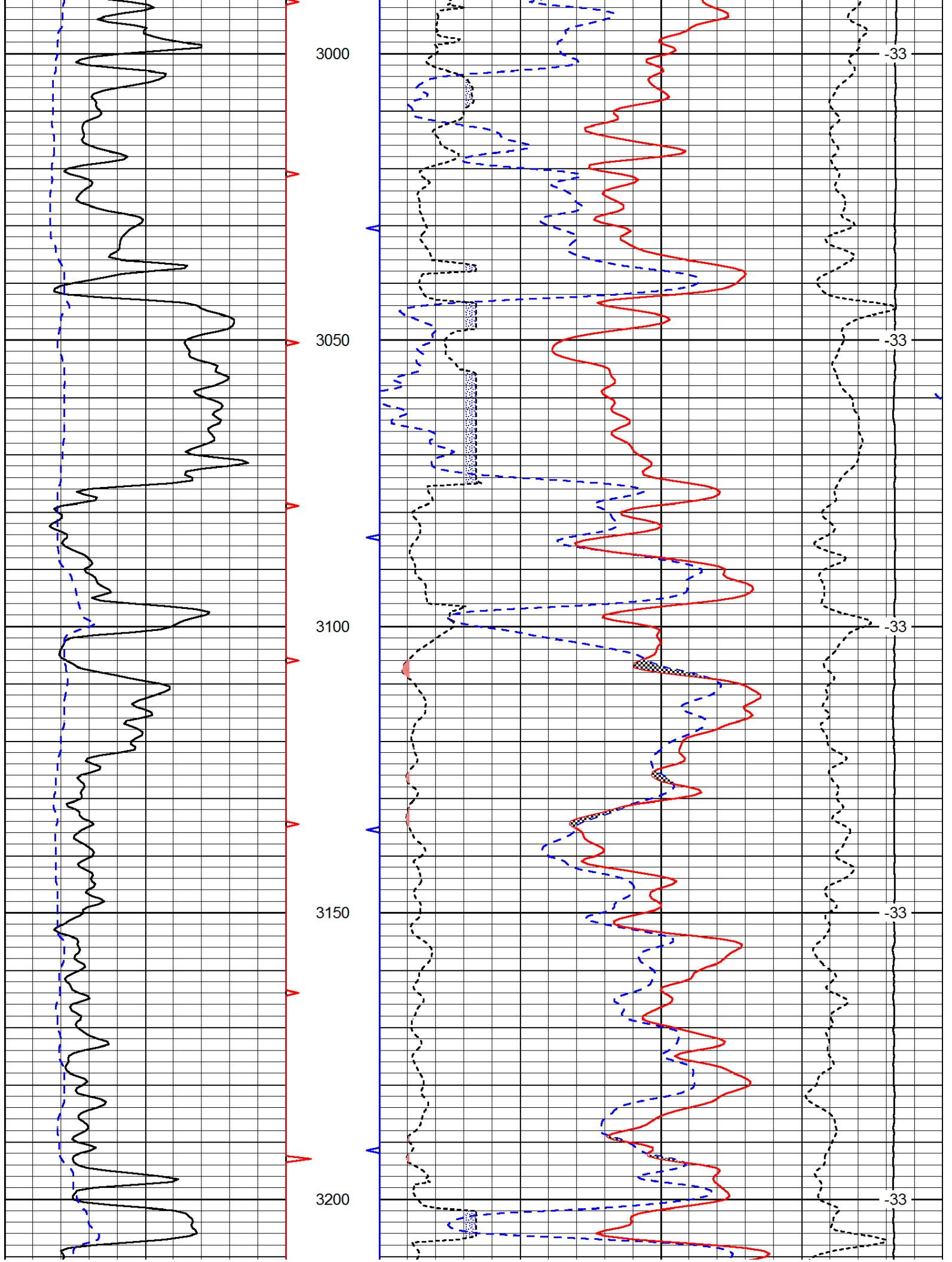
Database File: c:\warrior\data\h&d_fritzemeier # 1\h&d_fritzemeier_1hd.db
 Dataset Pathname: dil/hdstck
 Presentation Format: cndlspec
 Dataset Creation: Mon Jul 01 03:32:16 2013
 Charted by: Depth in Feet scaled 1:240

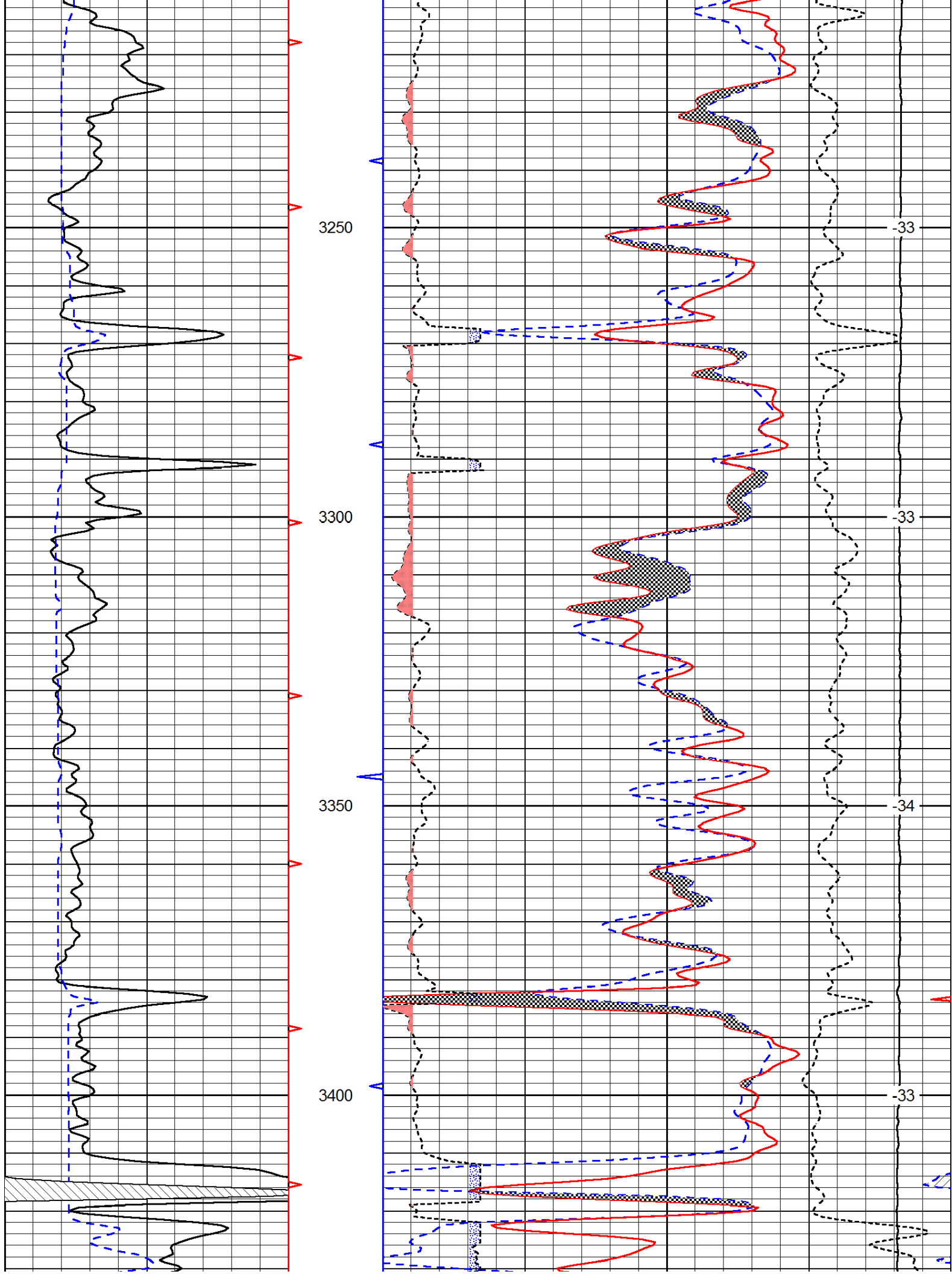
0 Gamma Ray 150
6 Caliper (GAPI) 16

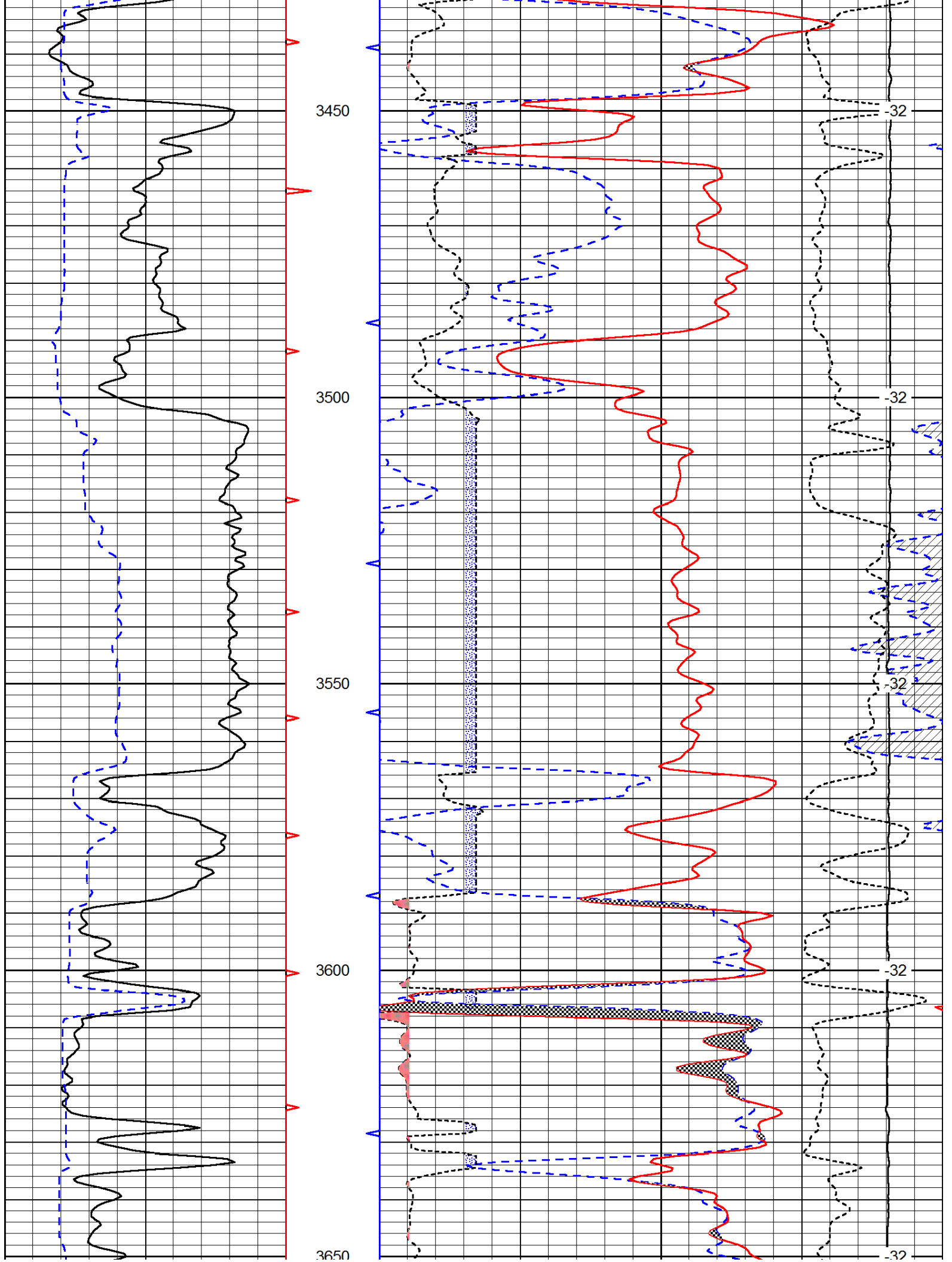
30 Compensated Neutron (Limestone) -10
30 Compensated Density (Limestone) -10
2.625 DGA 3.425 -0.25 Correction 0.25
15000 Line Tension 0

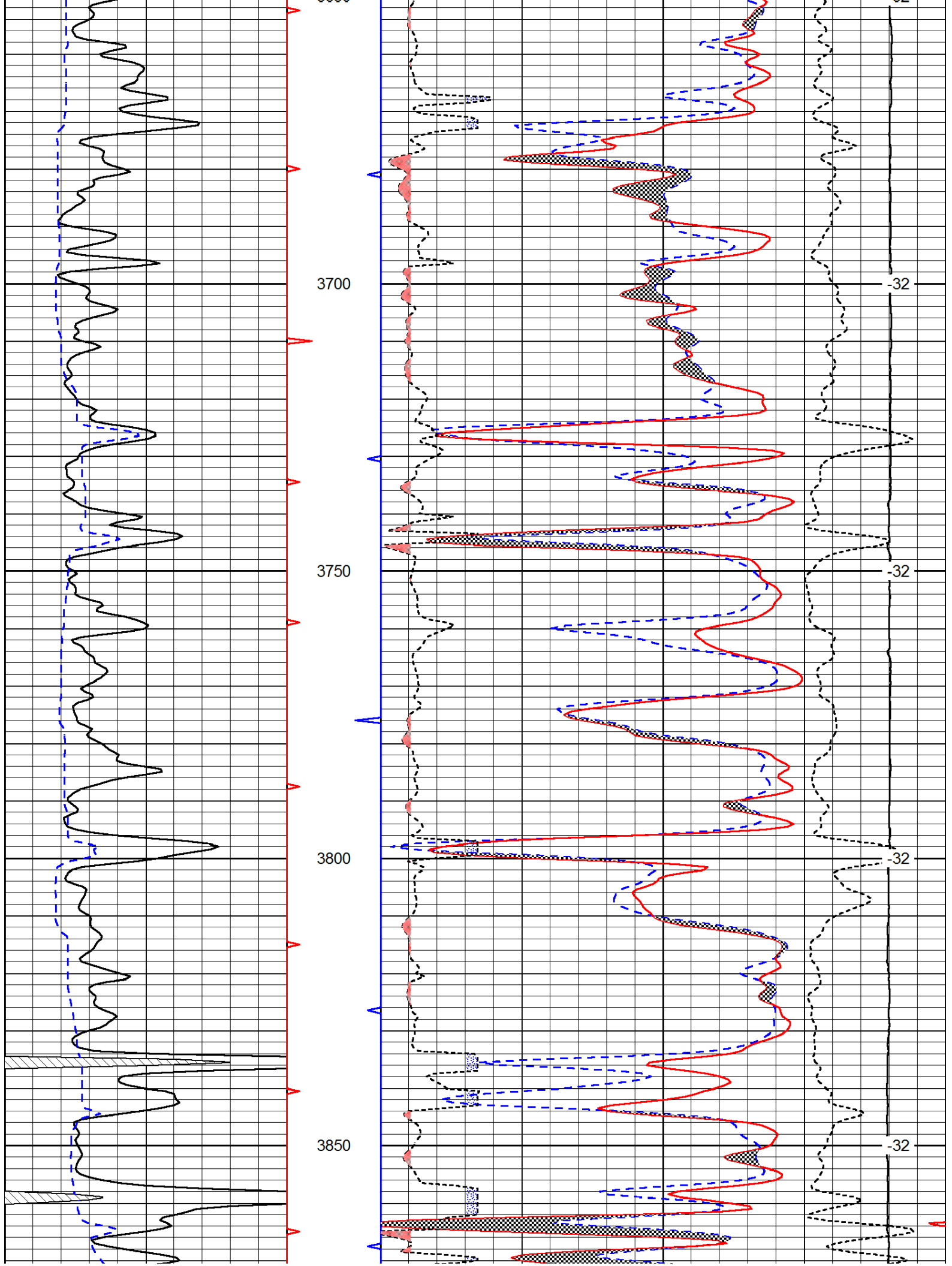
LSPD

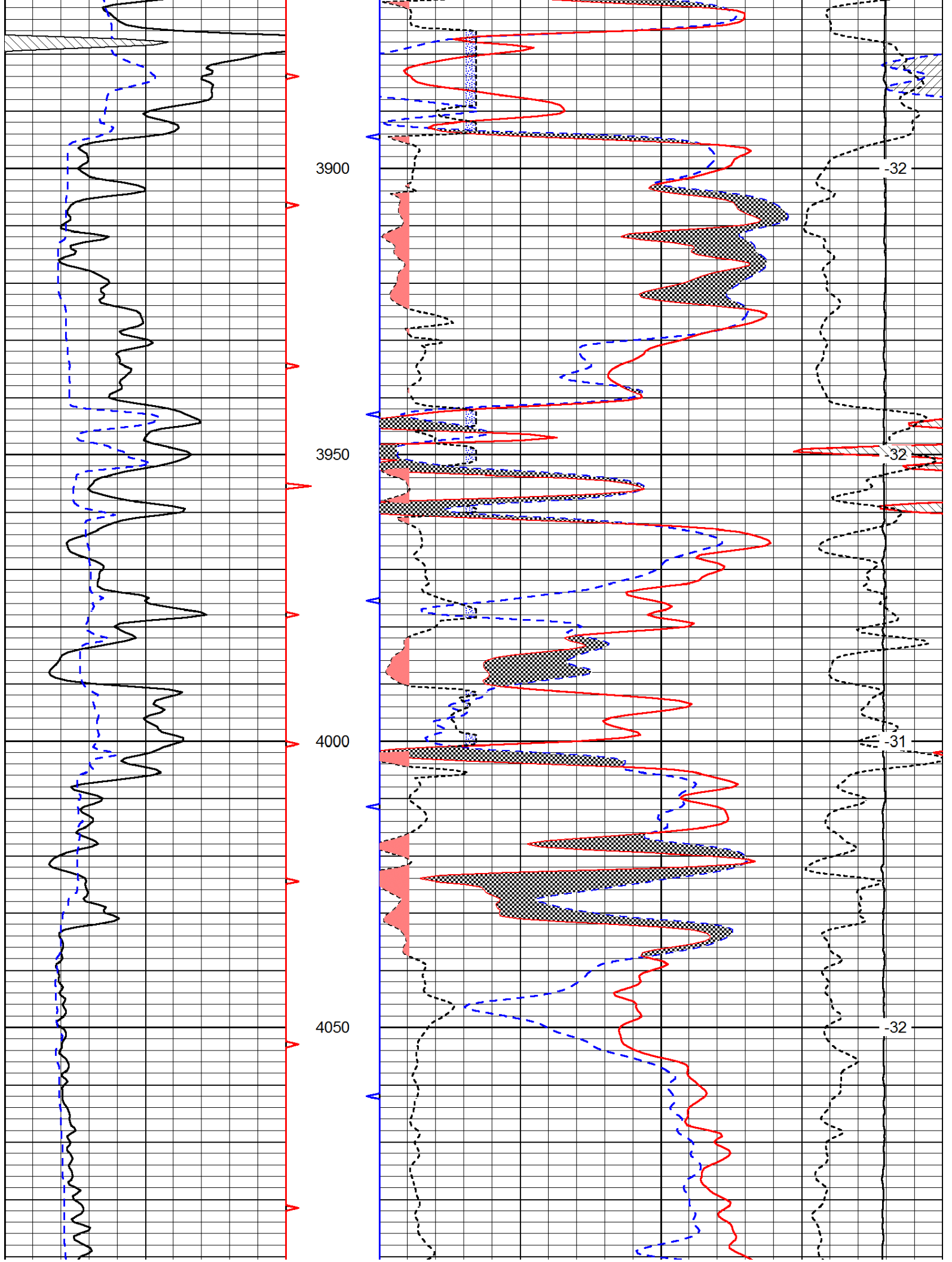


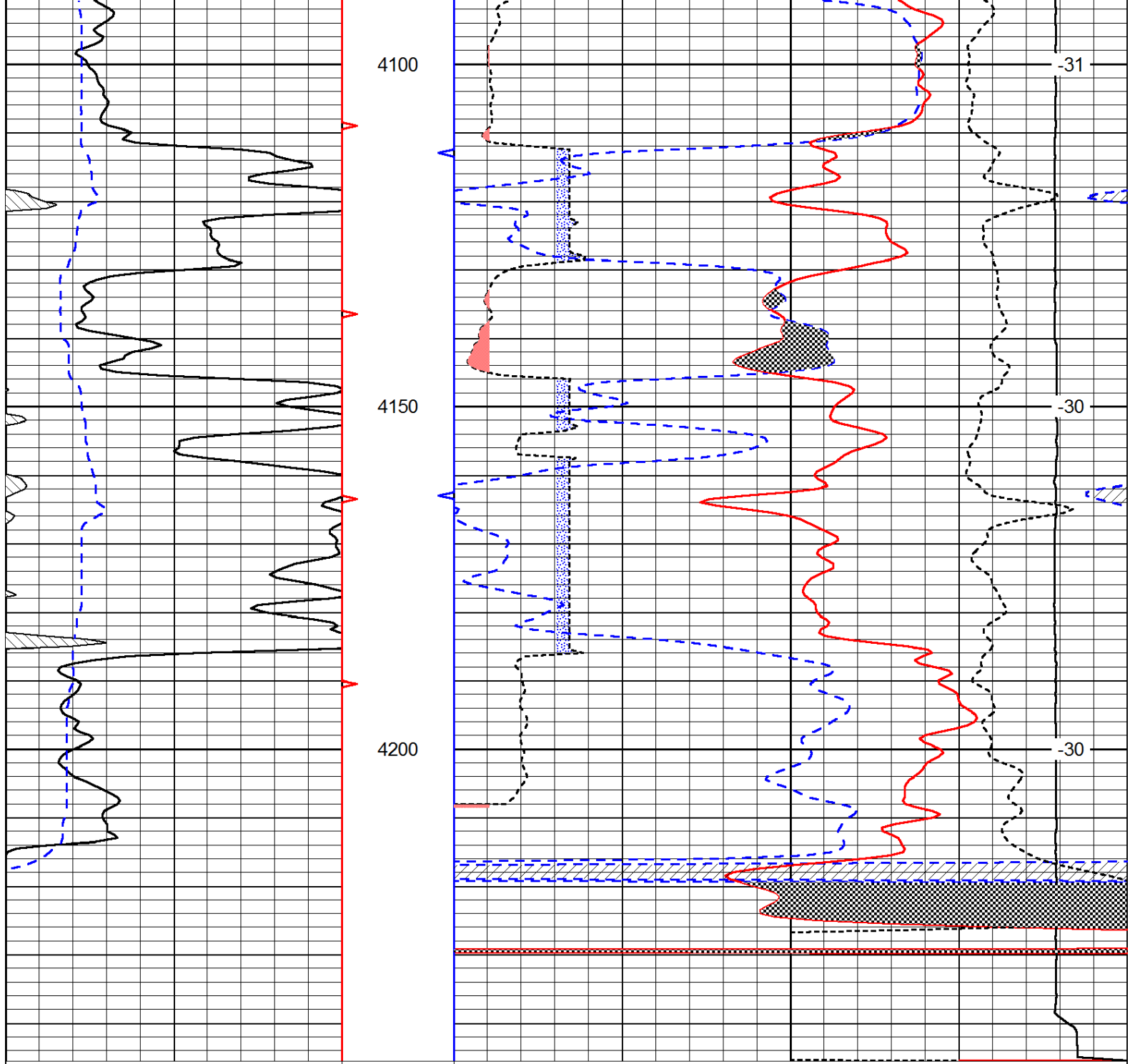












0	Gamma Ray	150
6	Caliper (GAPI)	16

30	Compensated Neutron (Limestone)	-10		
30	Compensated Density (Limestone)	-10		
2.625	DGA	3.425 -0.25	Correction	0.25
15000	Line Tension		0	

LSPD