



Pioneer Energy Services

Borehole Compensated Sonic Log

15-039-21,161-00-00

API No.

Company **Murfin Drilling Company, Inc.**
 Well **Phillips "A" No. 1-22**
 Field **None**
 County **Decatur** State **Kansas**

Location **1,800' FNL & 1,800' FEL**
 Sec: **22** Twp: **4 S** Rge: **30 W**

Other Services
 CNL/CDL
 MEL/DIL

Elevation
 K.B. 2743
 D.F. G.L. 2738

Date	10/18/2012
Run Number	Two
Type Log	BHC Sonic
Depth Driller	4450
Depth Logger	4451
Bottom Logged Interval	4440
Top Logged Interval	200
Type Fluid In Hole	Chemical
Salinity, PPM CL	1,000
Density Level	9.1
Level	Full
Max. Rec. Temp. F	121
Operating Rig Time	5 Hours
Equipment -- Location	15 Days
Recorded By	D Kerr
Witnessed By	Rocky Milford

Borehole Record		Casing Record					
Run No.	Bit	From	To	Size	Wgt.	From	To
1	12.25	00	221	8.625	24#	00	221
2	7.875	221	4450				

<<< Fold Here >>>

All interpretations are opinions based on inferences from electrical or other measurements and we cannot and do not guarantee the accuracy or correctness of any interpretation, and we shall not, except in the case of gross or willful negligence on our part, be liable or responsible for any loss, costs, damages, or expenses incurred or sustained by anyone resulting from any interpretation made by any of our officers, agents or employees. These interpretations are also subject to our general terms and conditions set out in our current Price Schedule.

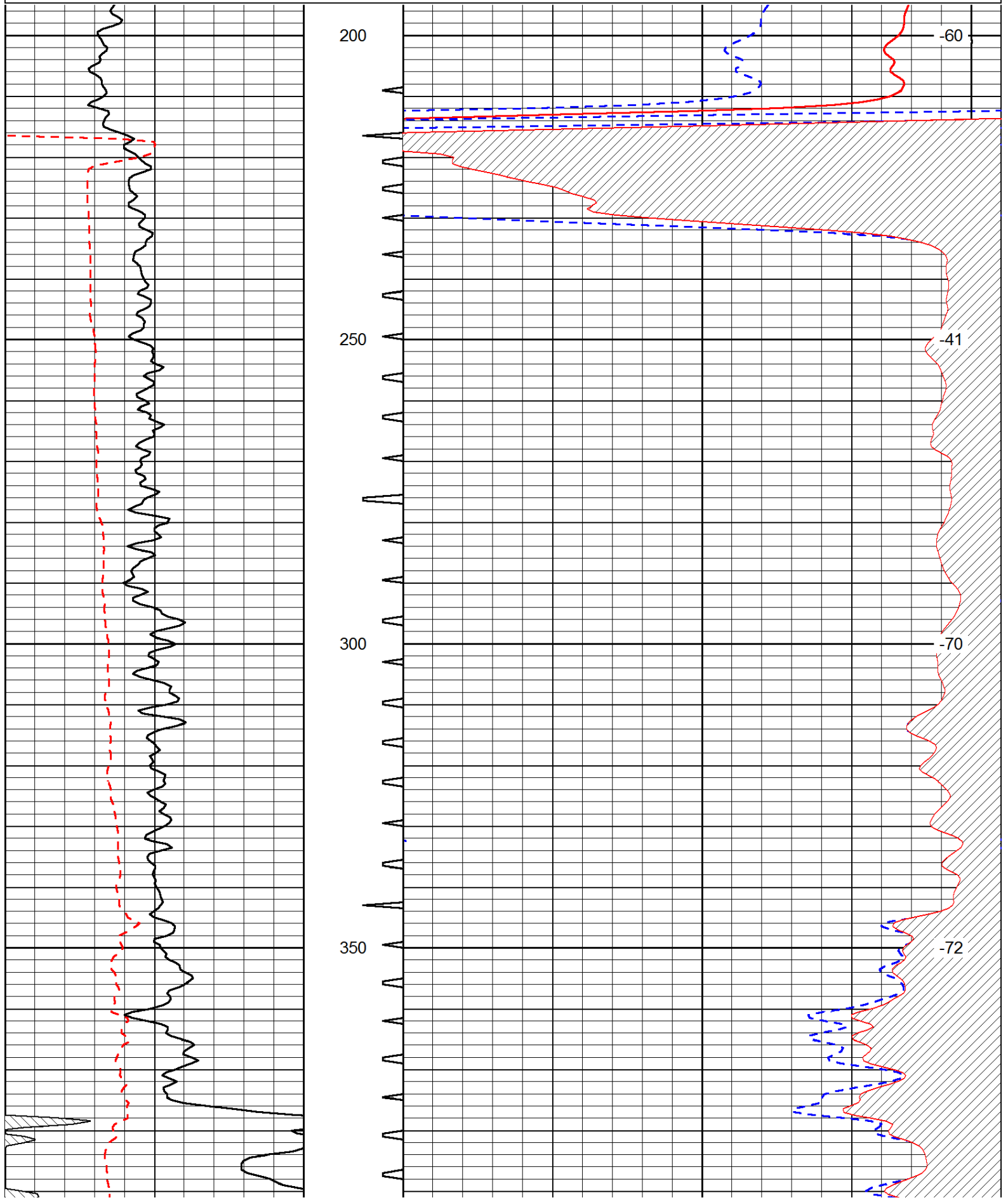
Comments

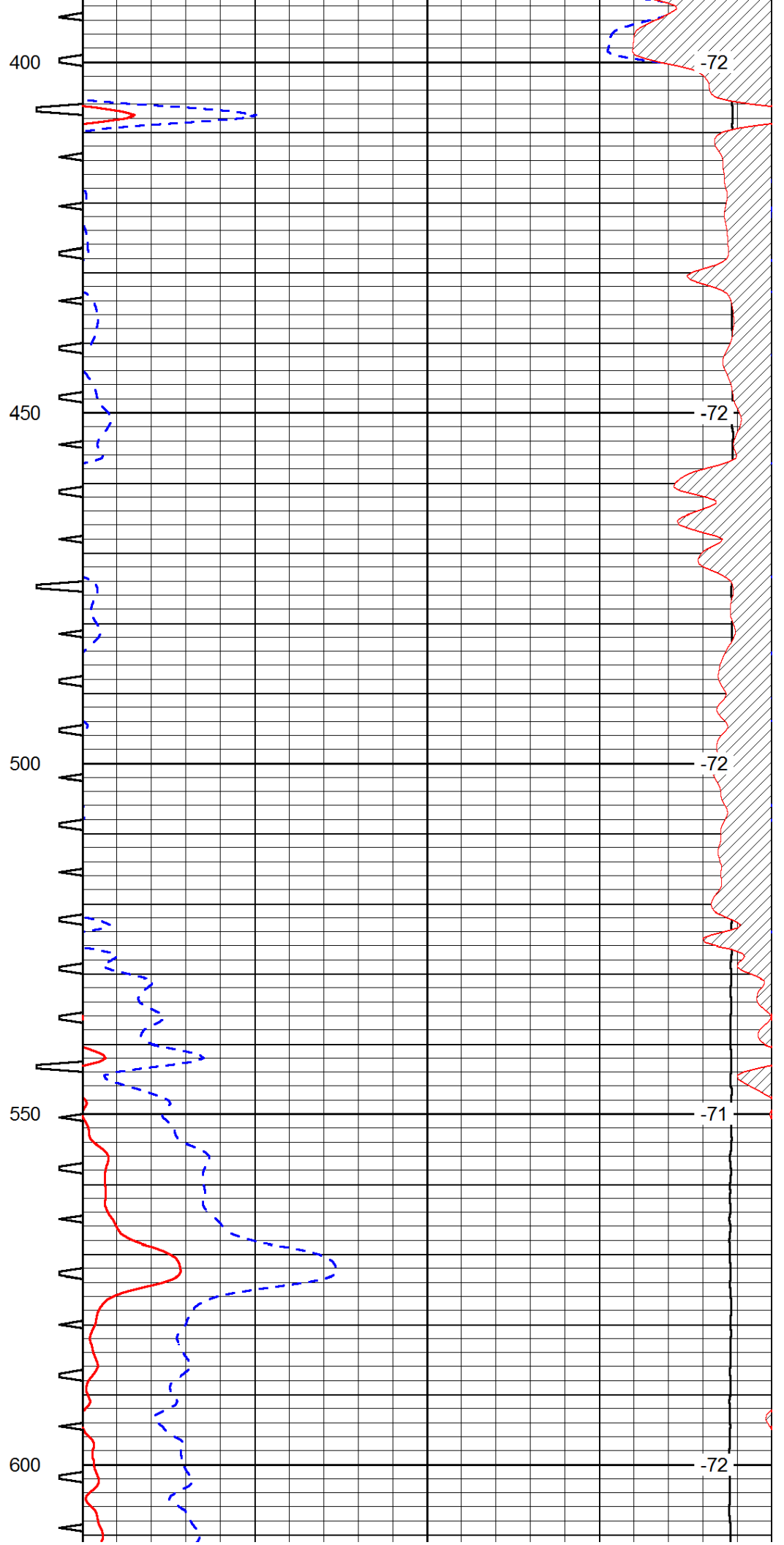
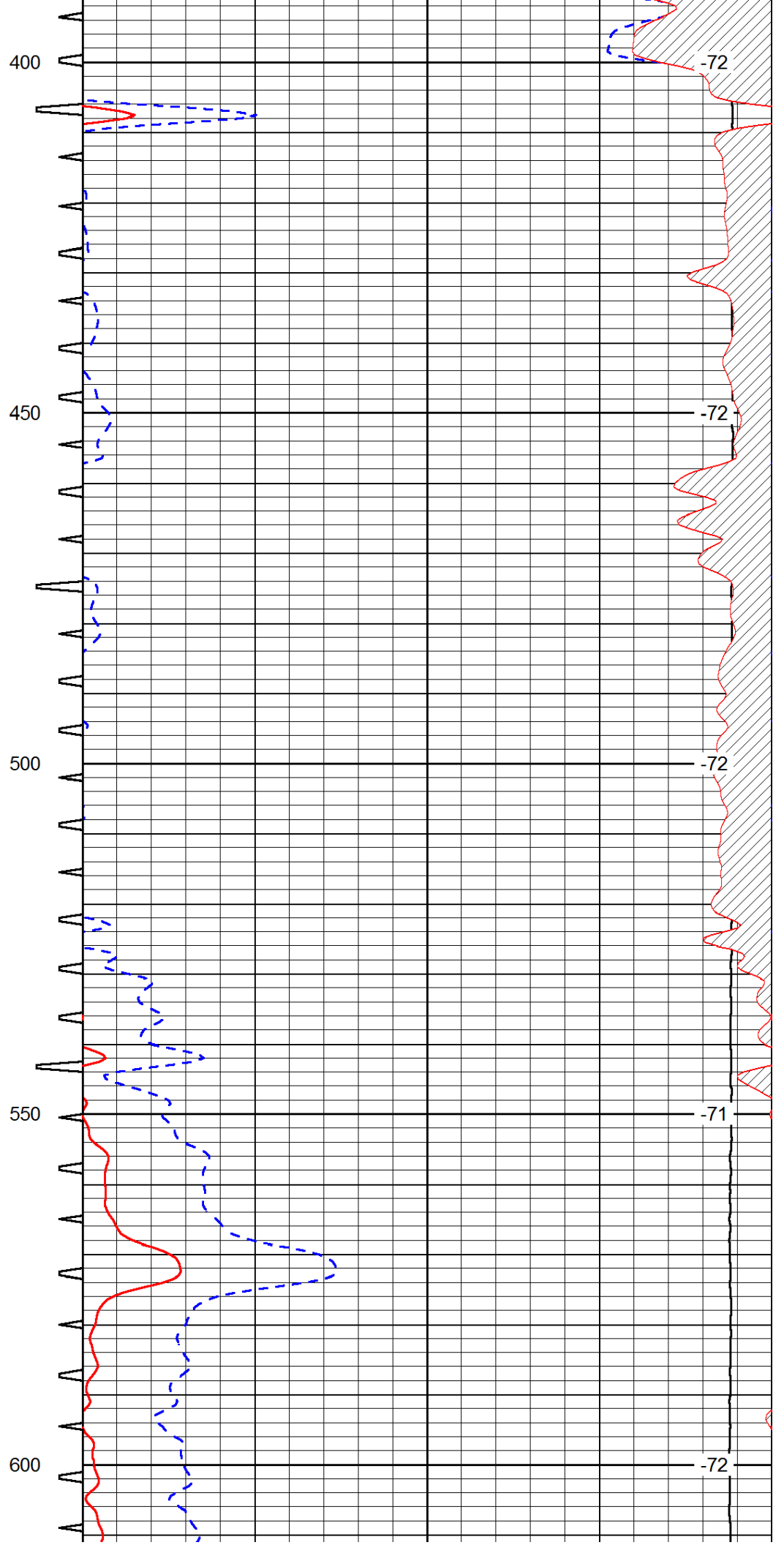
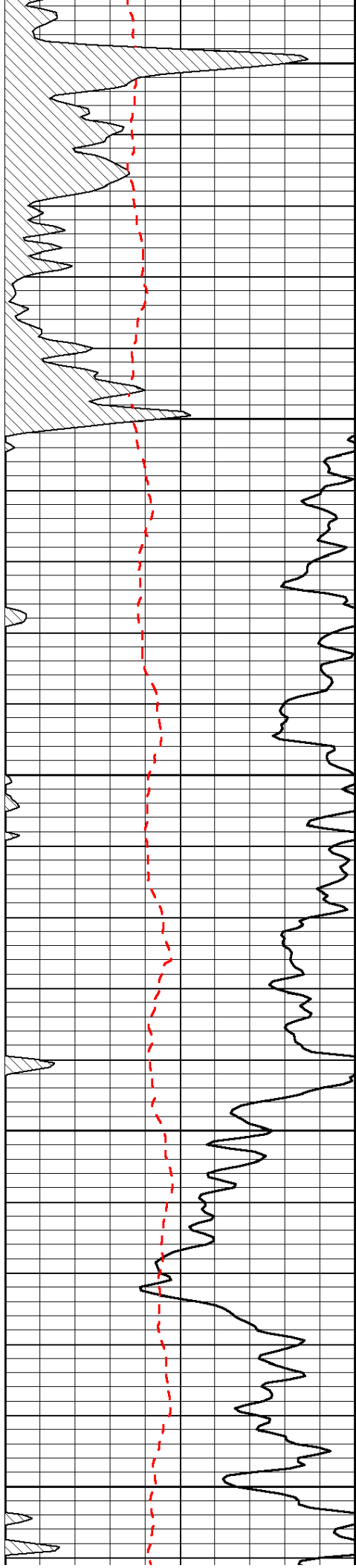
Thank you for using Pioneer Energy Services
 www.pioneerres.com
 785 625 3858
 Selden KS, East to Hwy Junction 83 & Hwy 23,
 7 1/2 North to 11 S Rd., 8 West, 1 3/4 North,
 East Into, 1 Mile Into

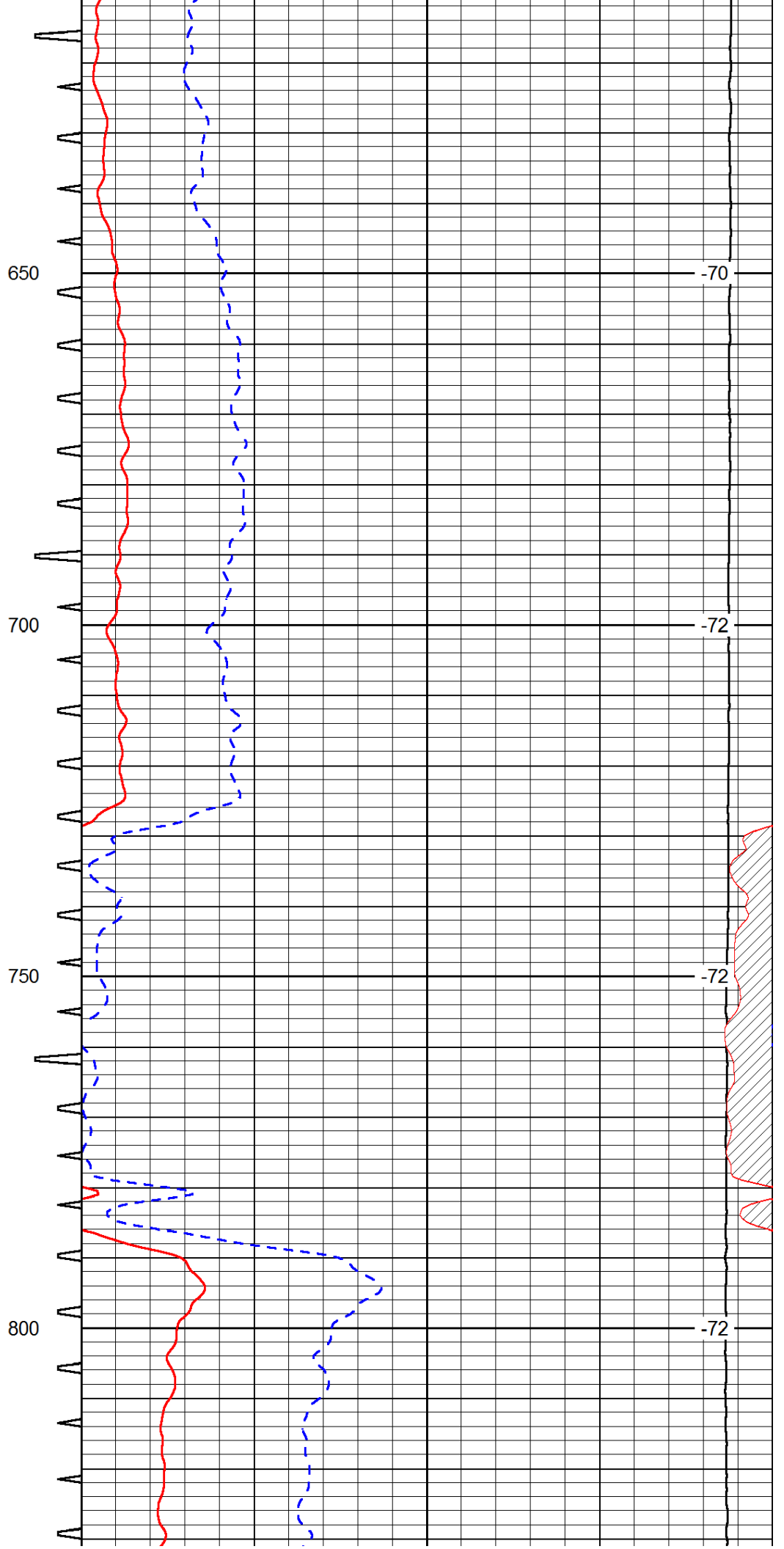
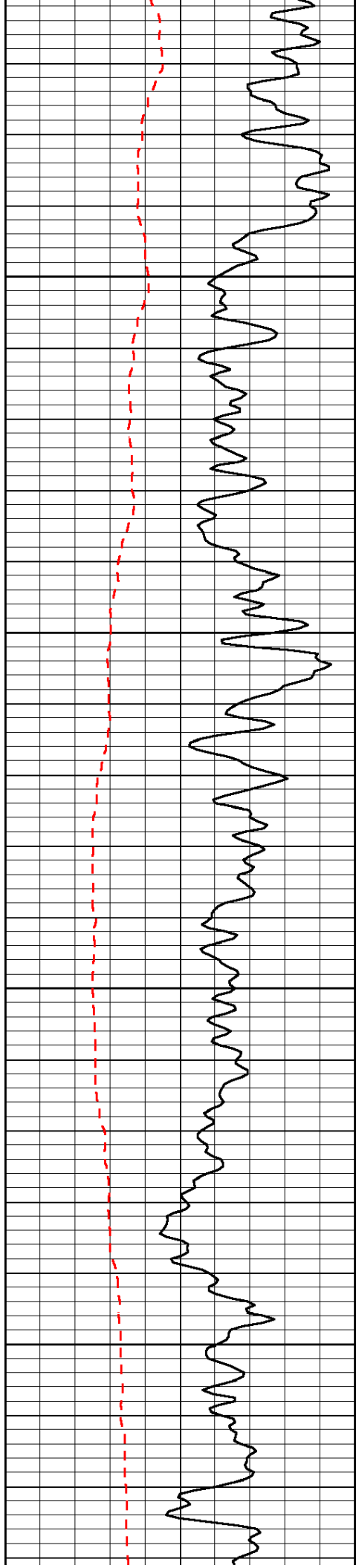
Database File: c:\warrior\data\murfin_phillips 'a' #1-22\murfin_phillips_1-22hd.db
 Dataset Pathname: DIL\murfstk
 Presentation Format: sonic
 Dataset Creation: Fri Oct 19 00:08:57 2012
 Charted by: Depth in Feet scaled 1:240

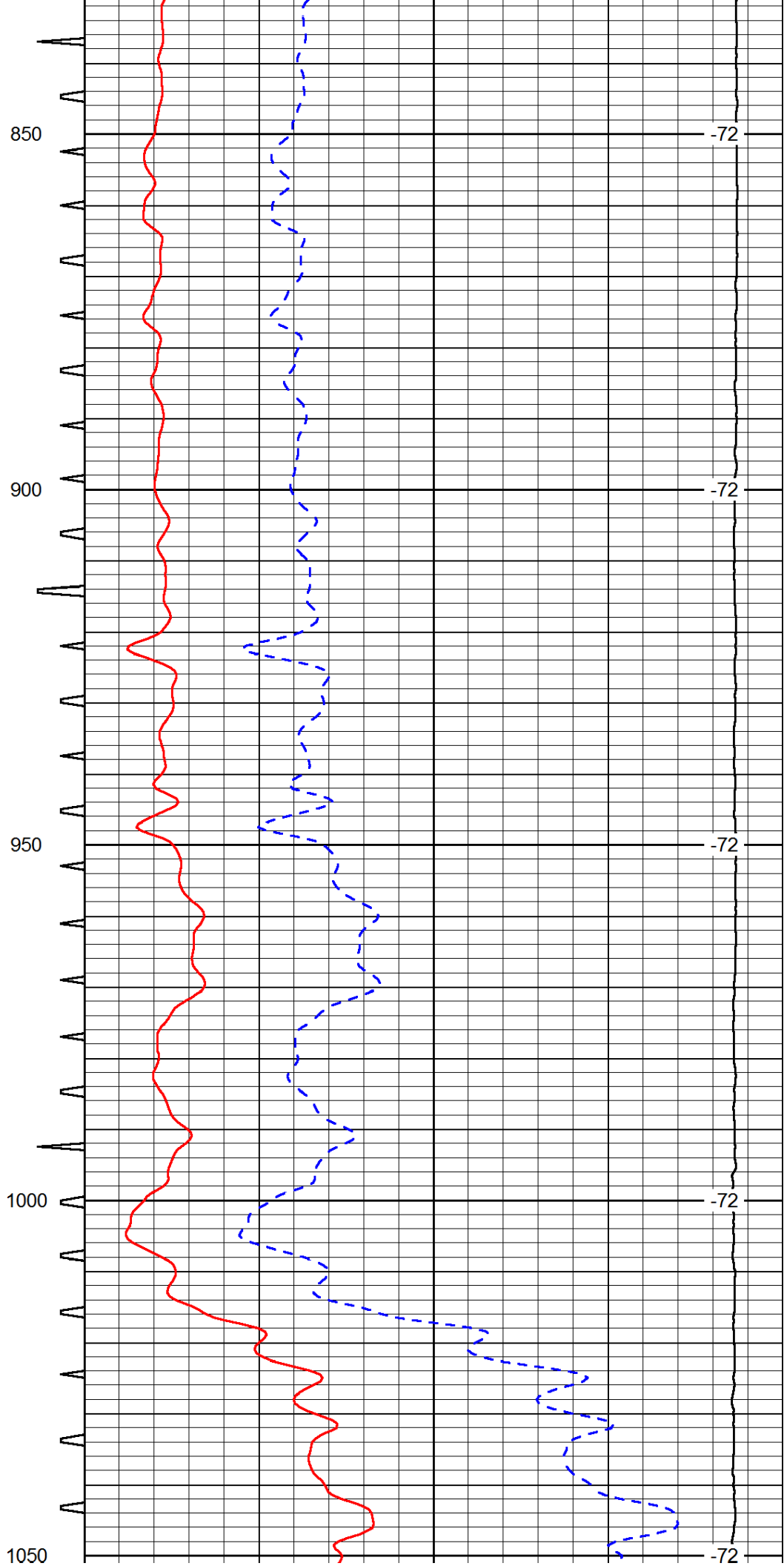
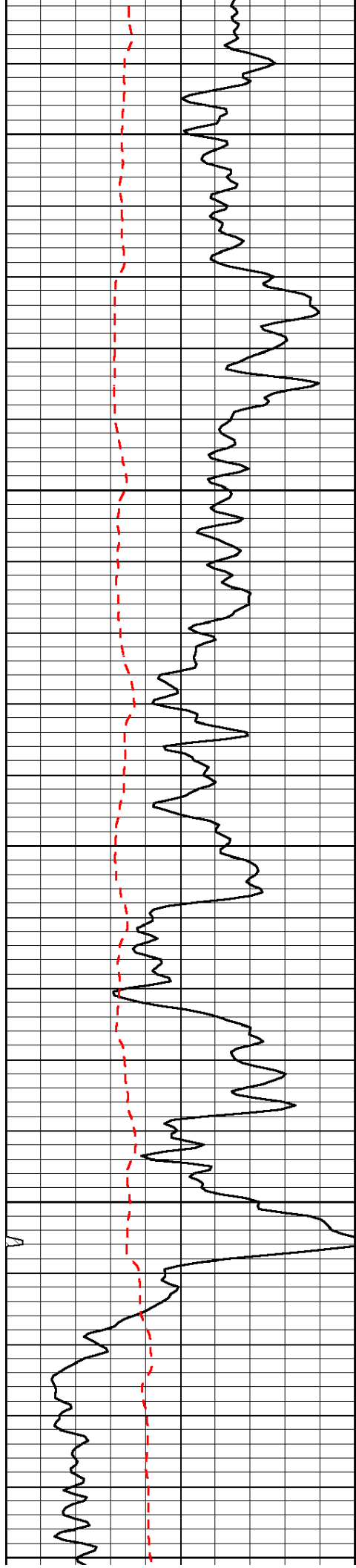
0	Gamma Ray	150	Sonic Int	140	Delta Time (usec/ft)	40
150	Gamma Ray	300	5	0	SPOR	-10
6	Caliper (GAPI)	16		15000	LTEN (lb)	0

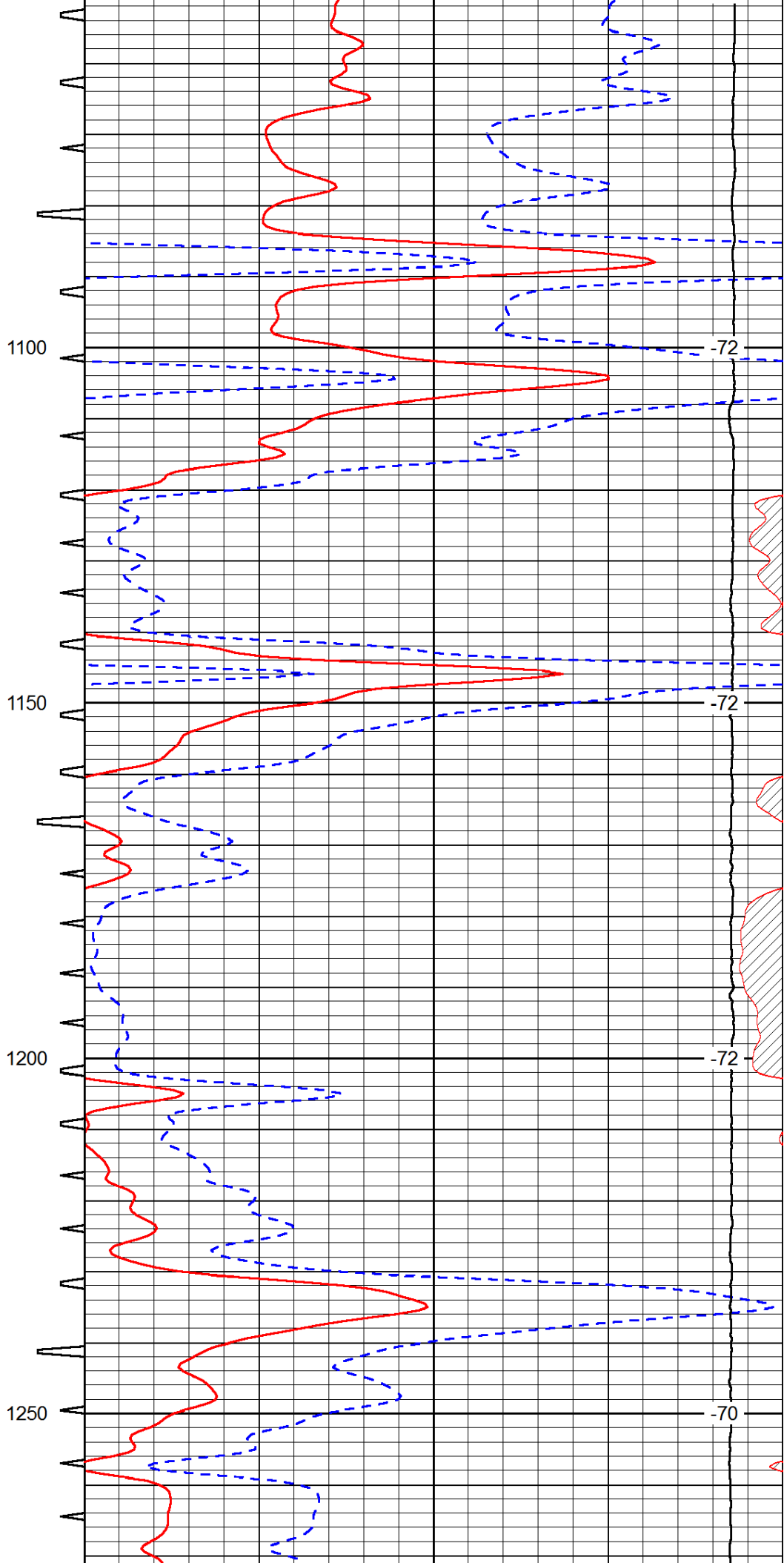
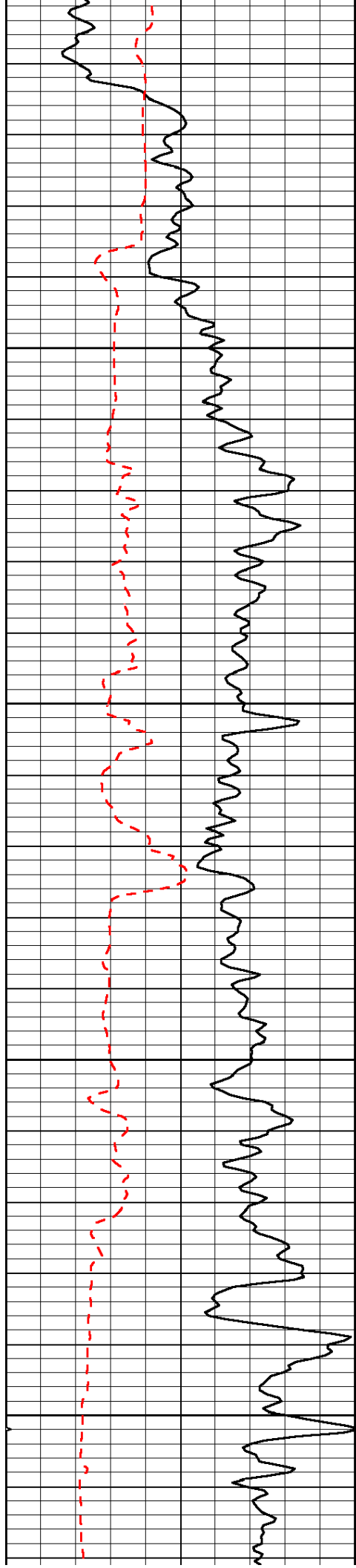
LSPD

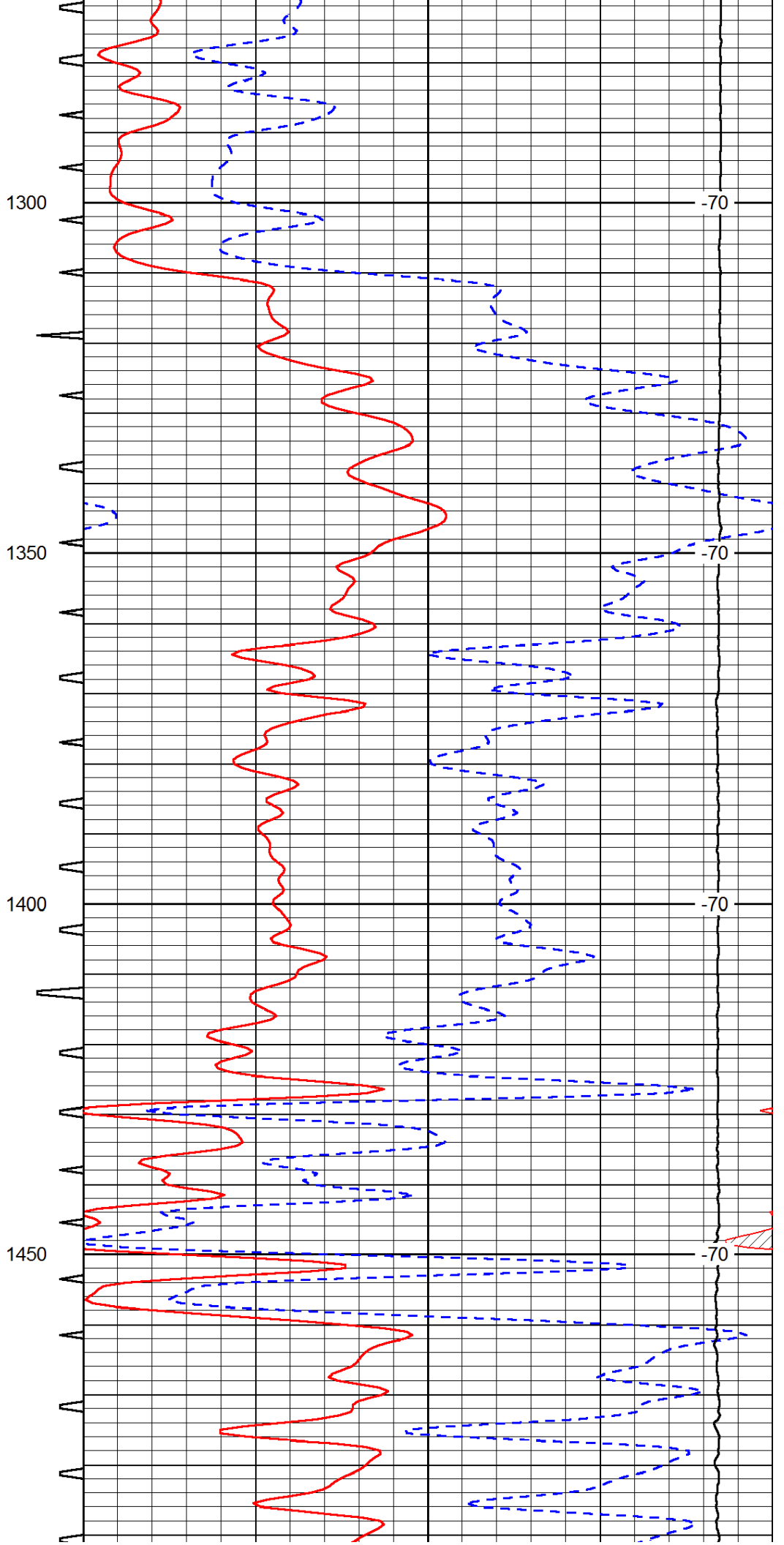
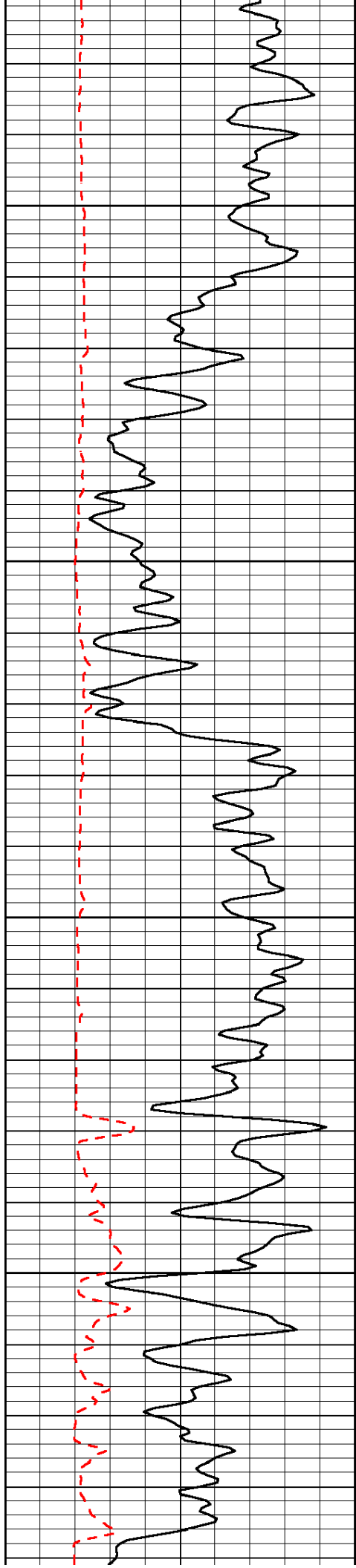


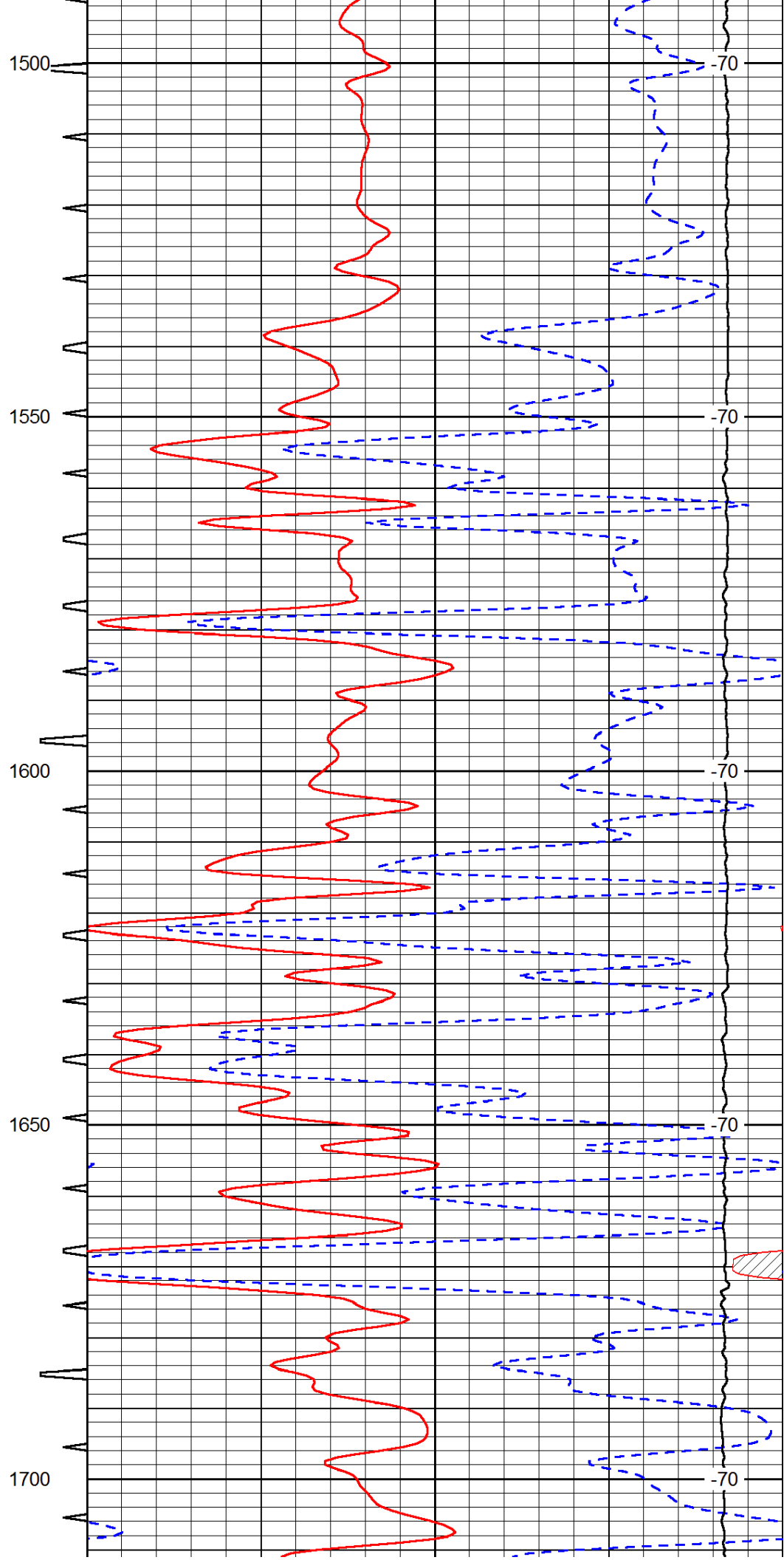
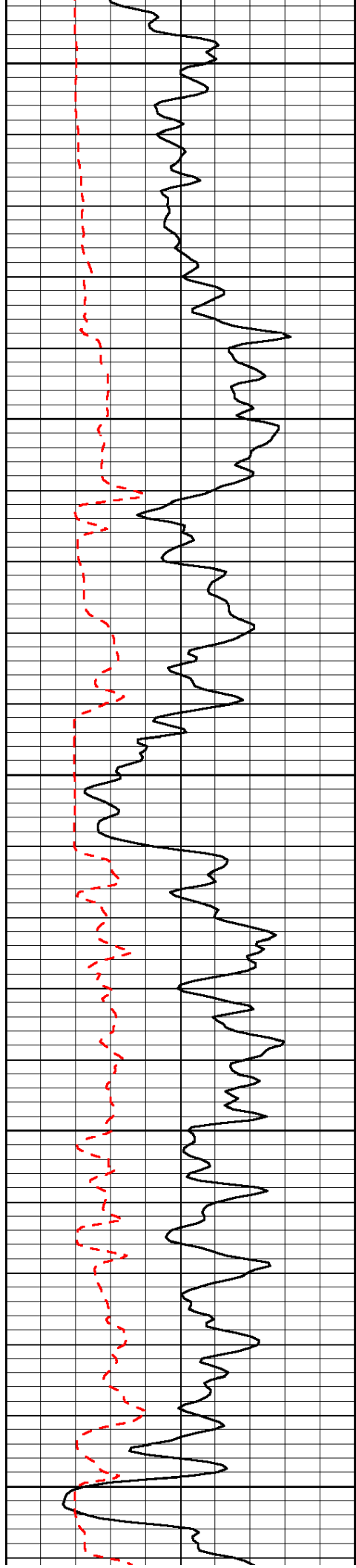


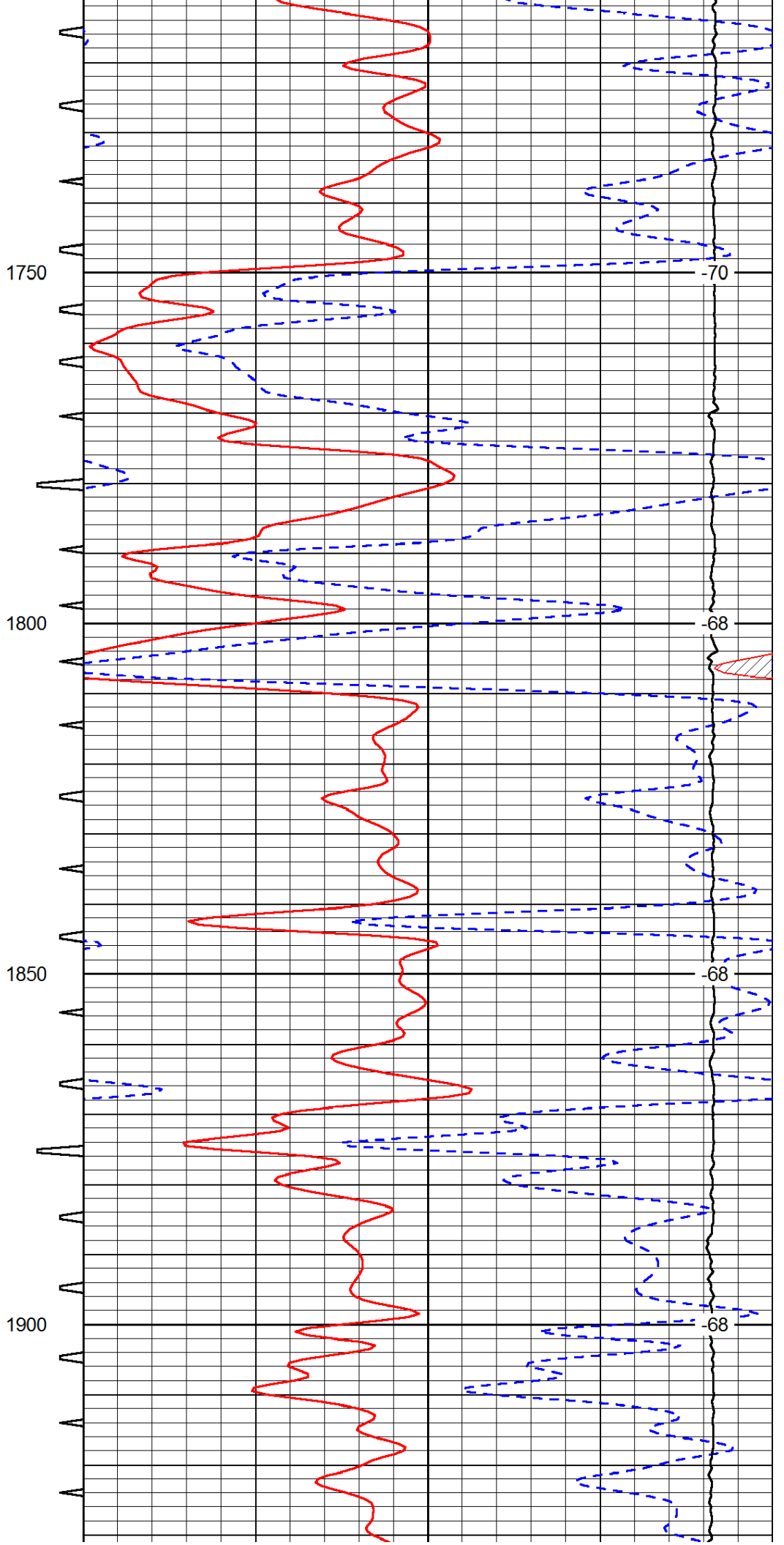
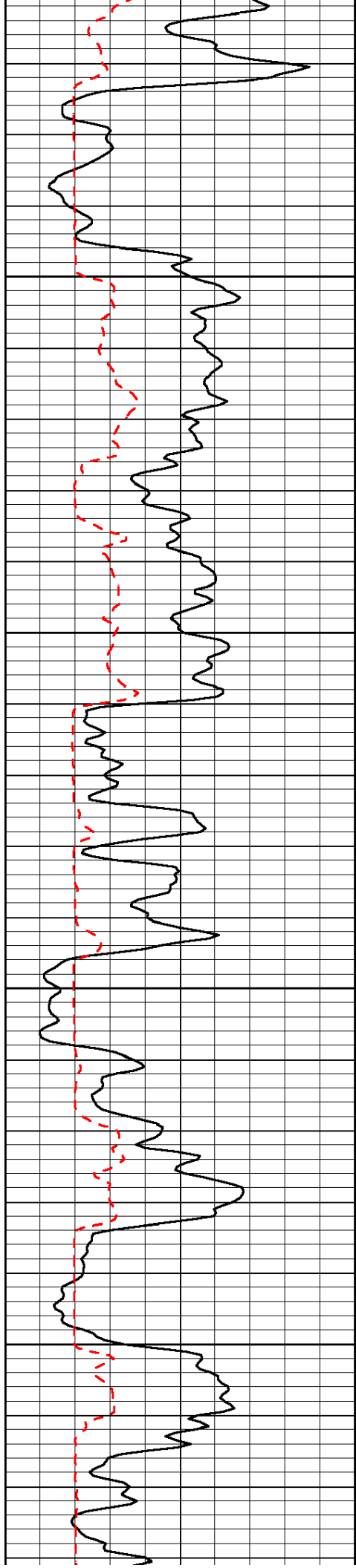


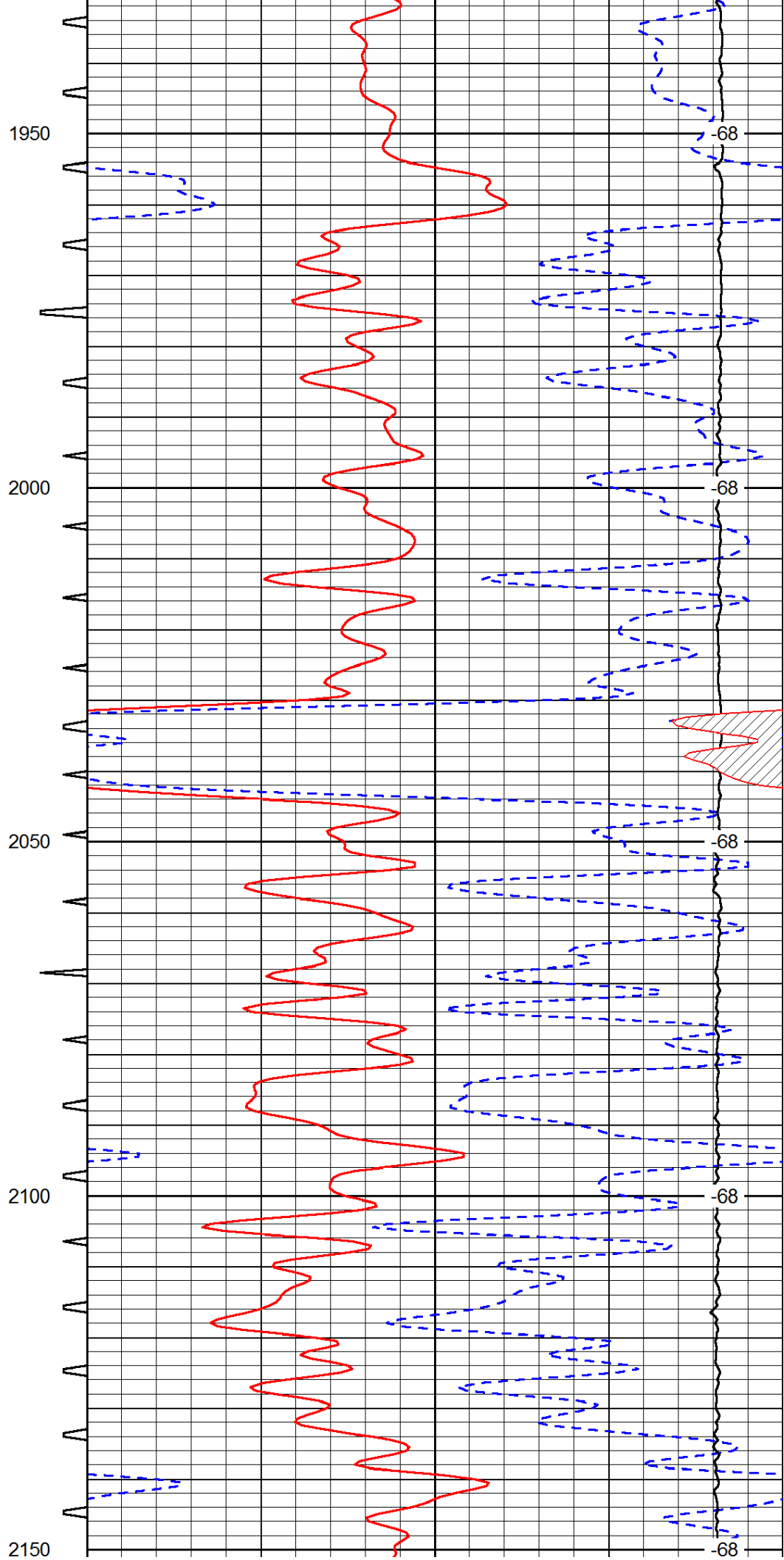
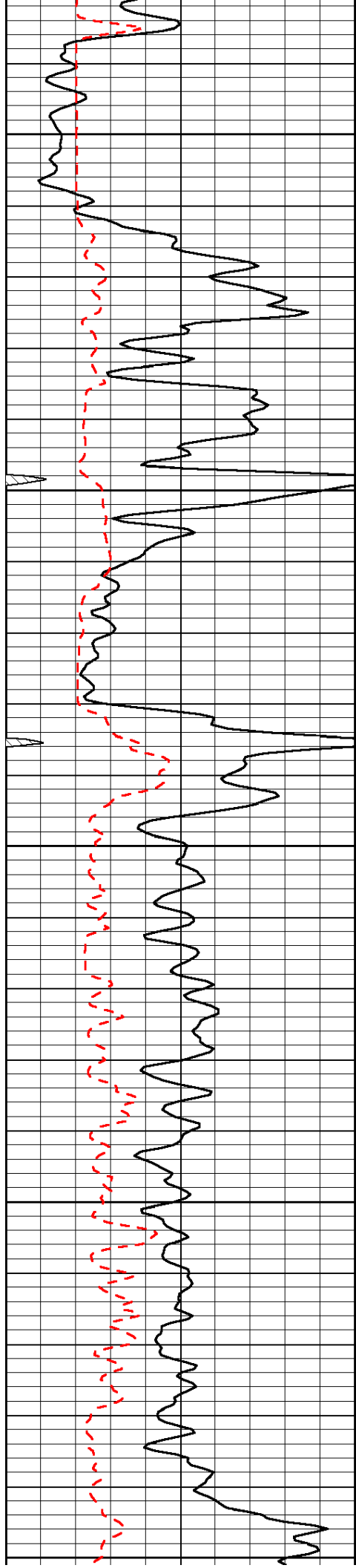


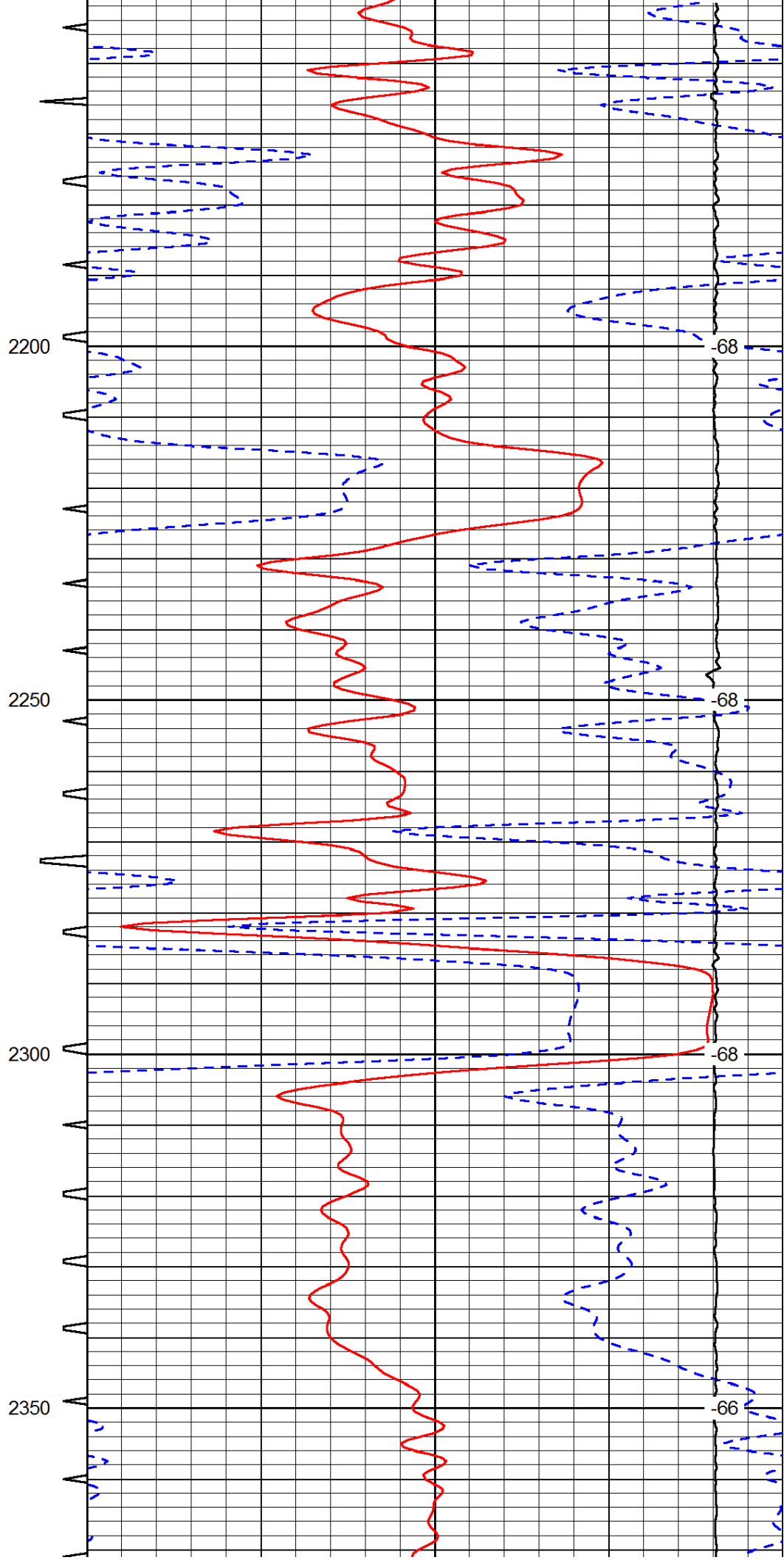
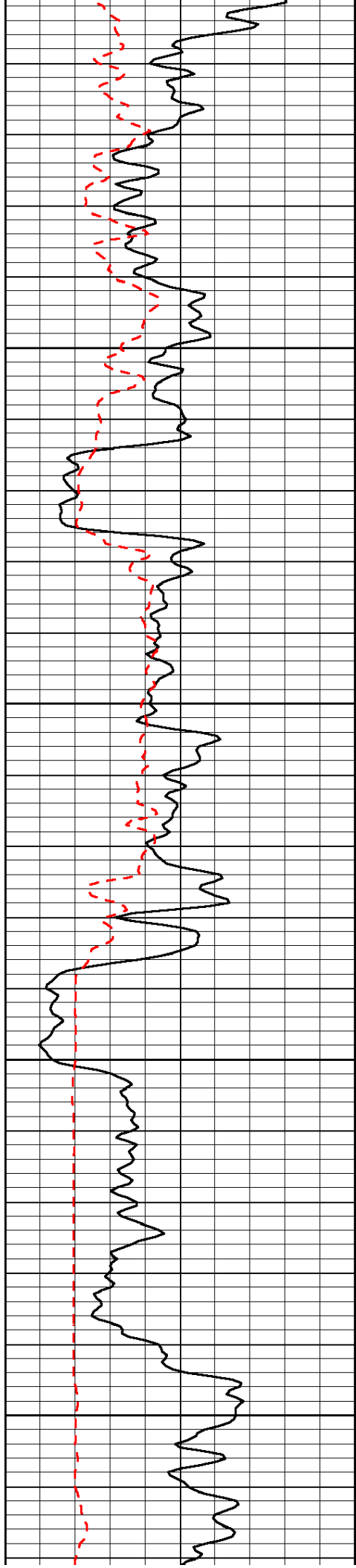


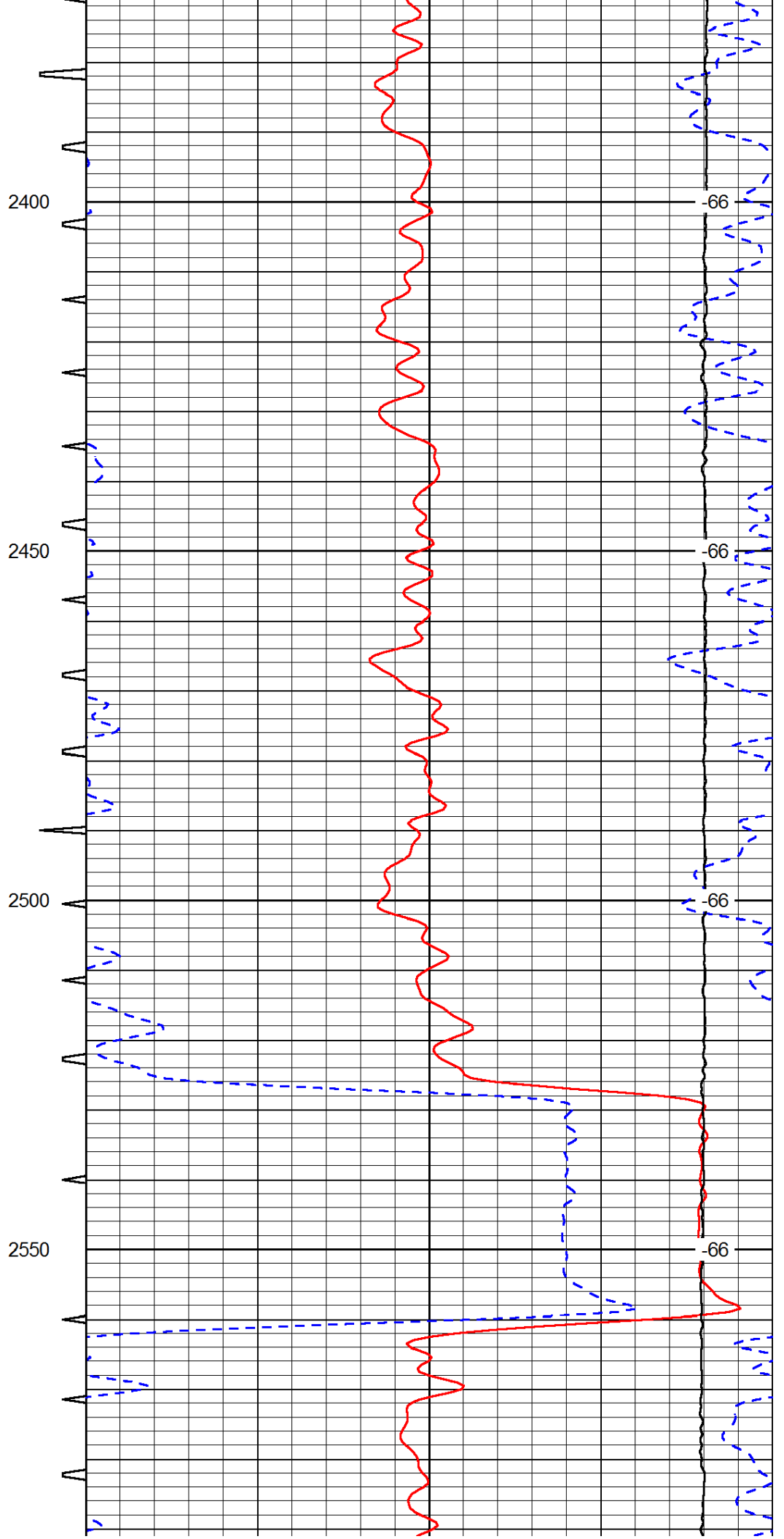
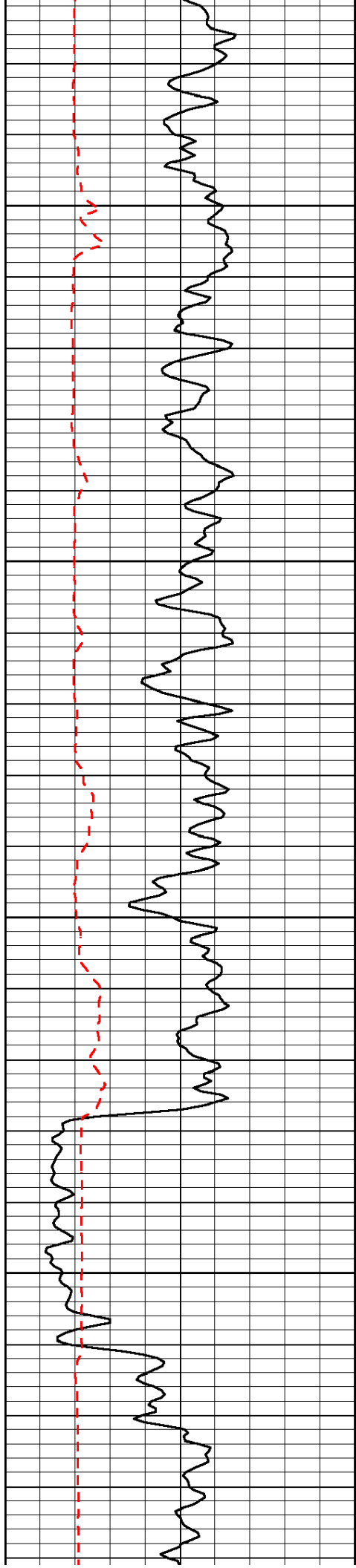


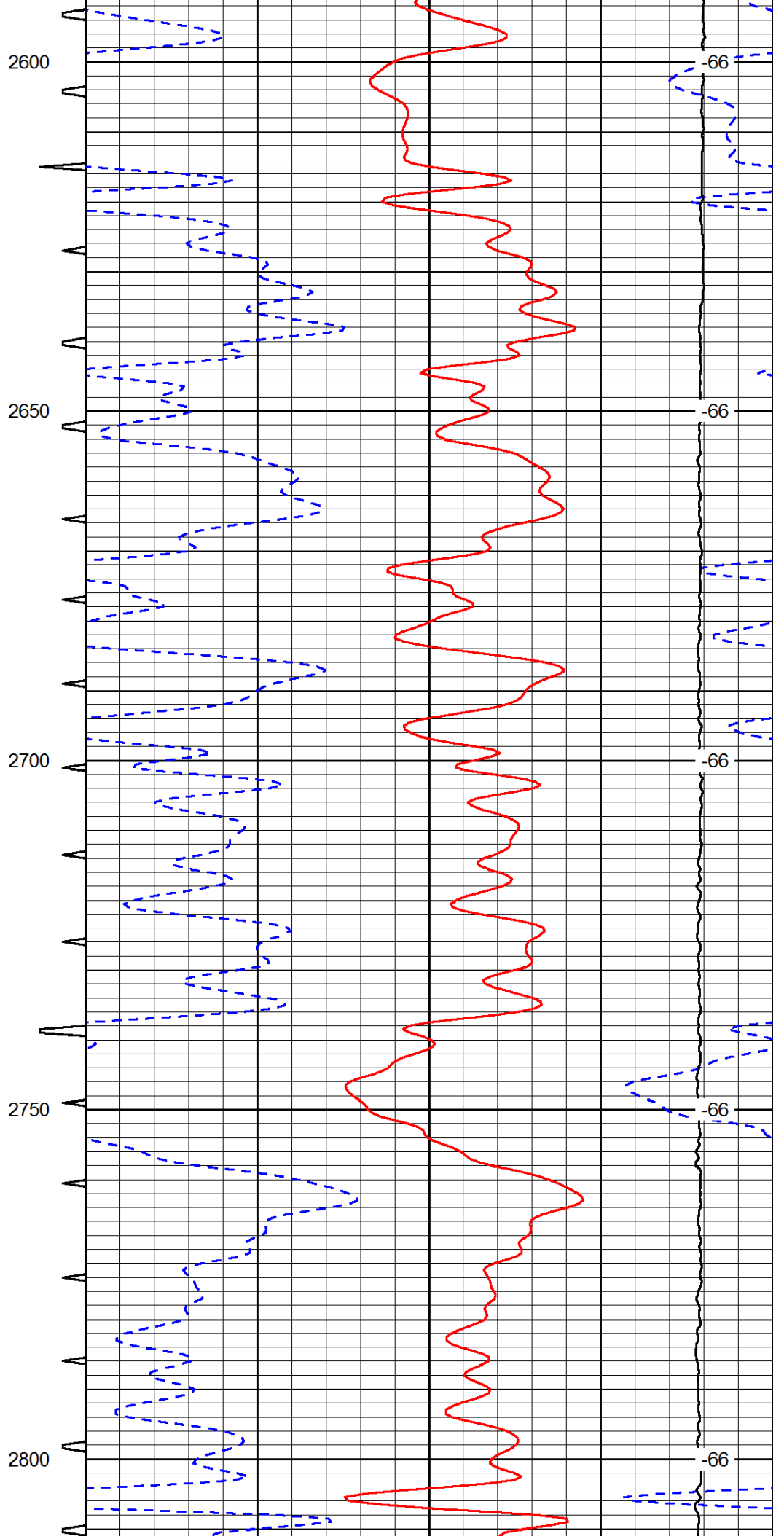
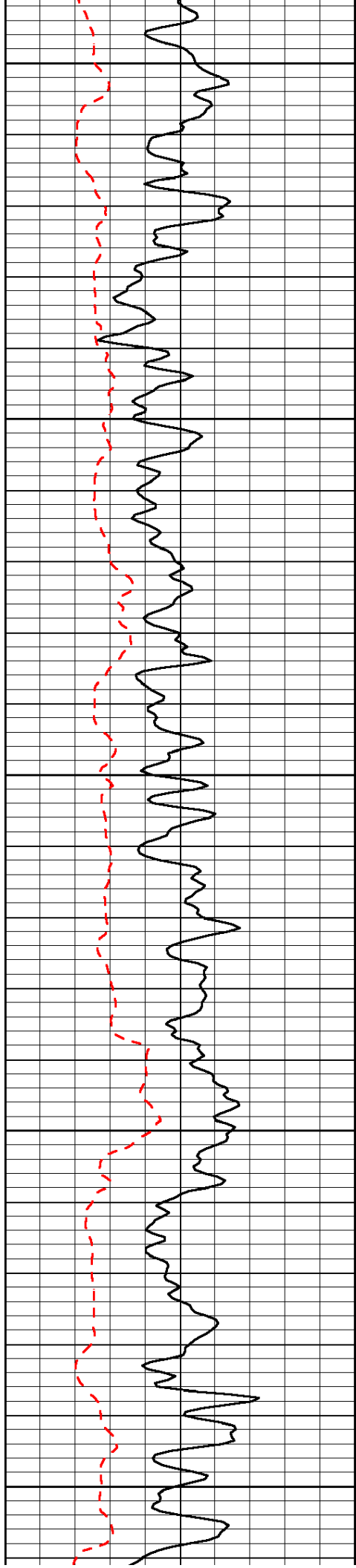


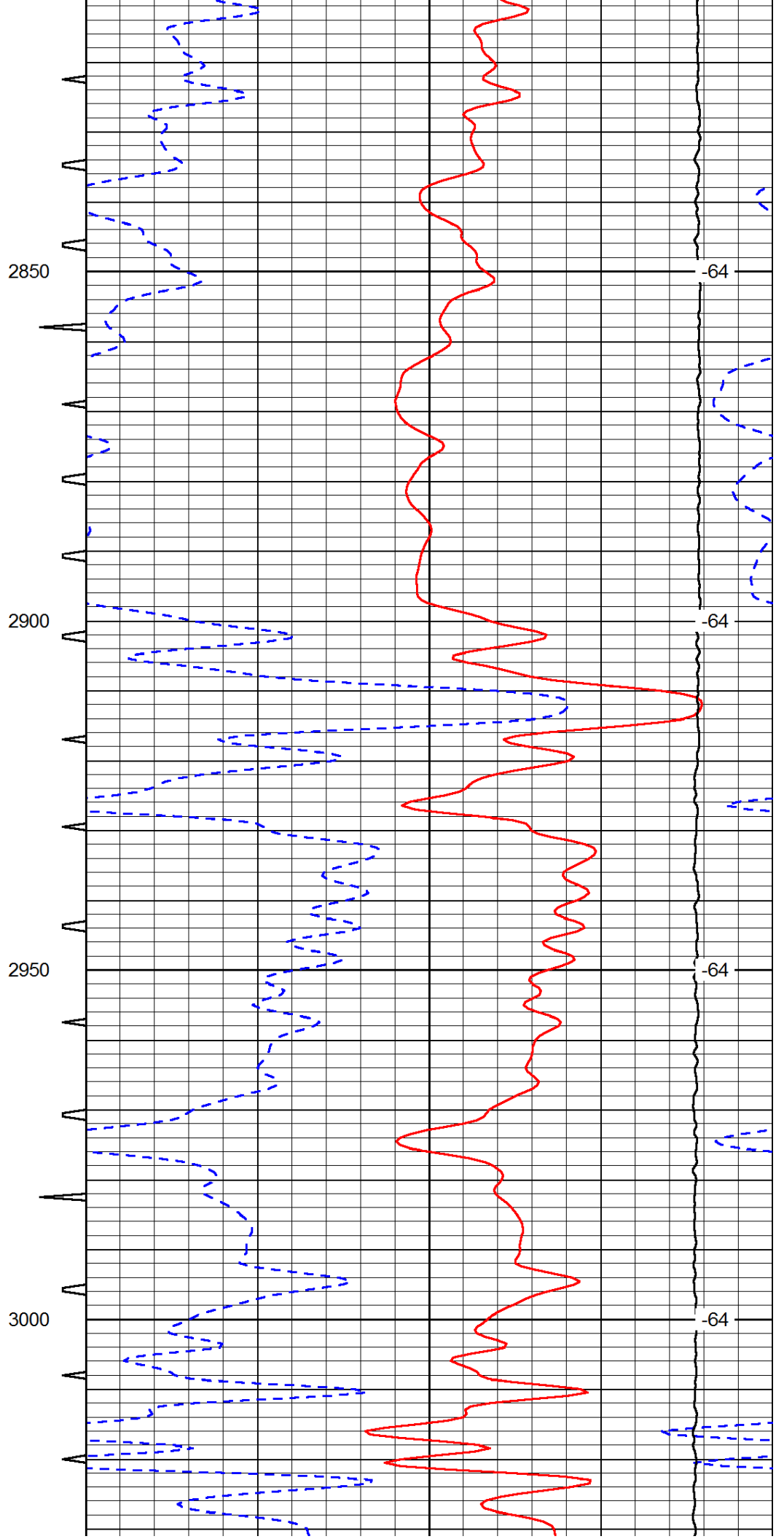
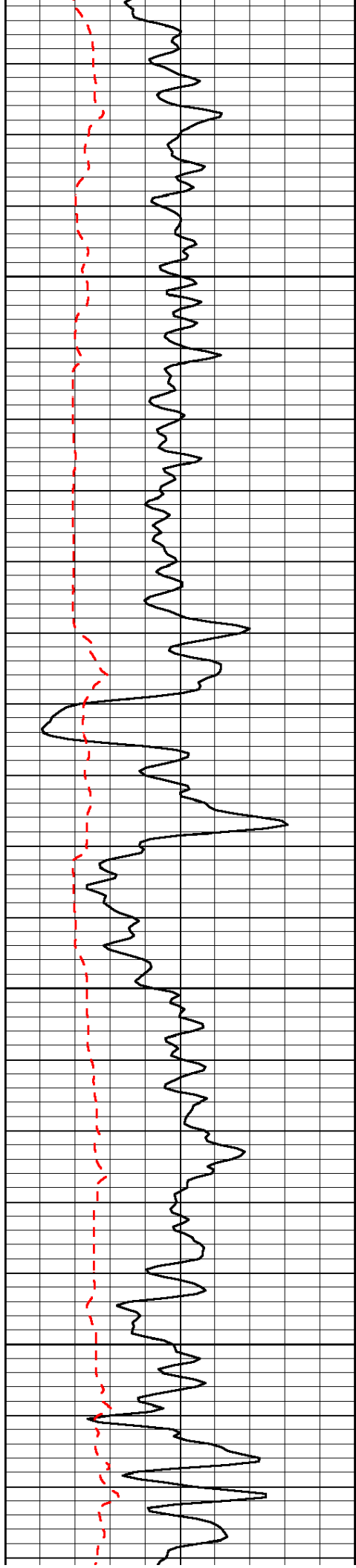


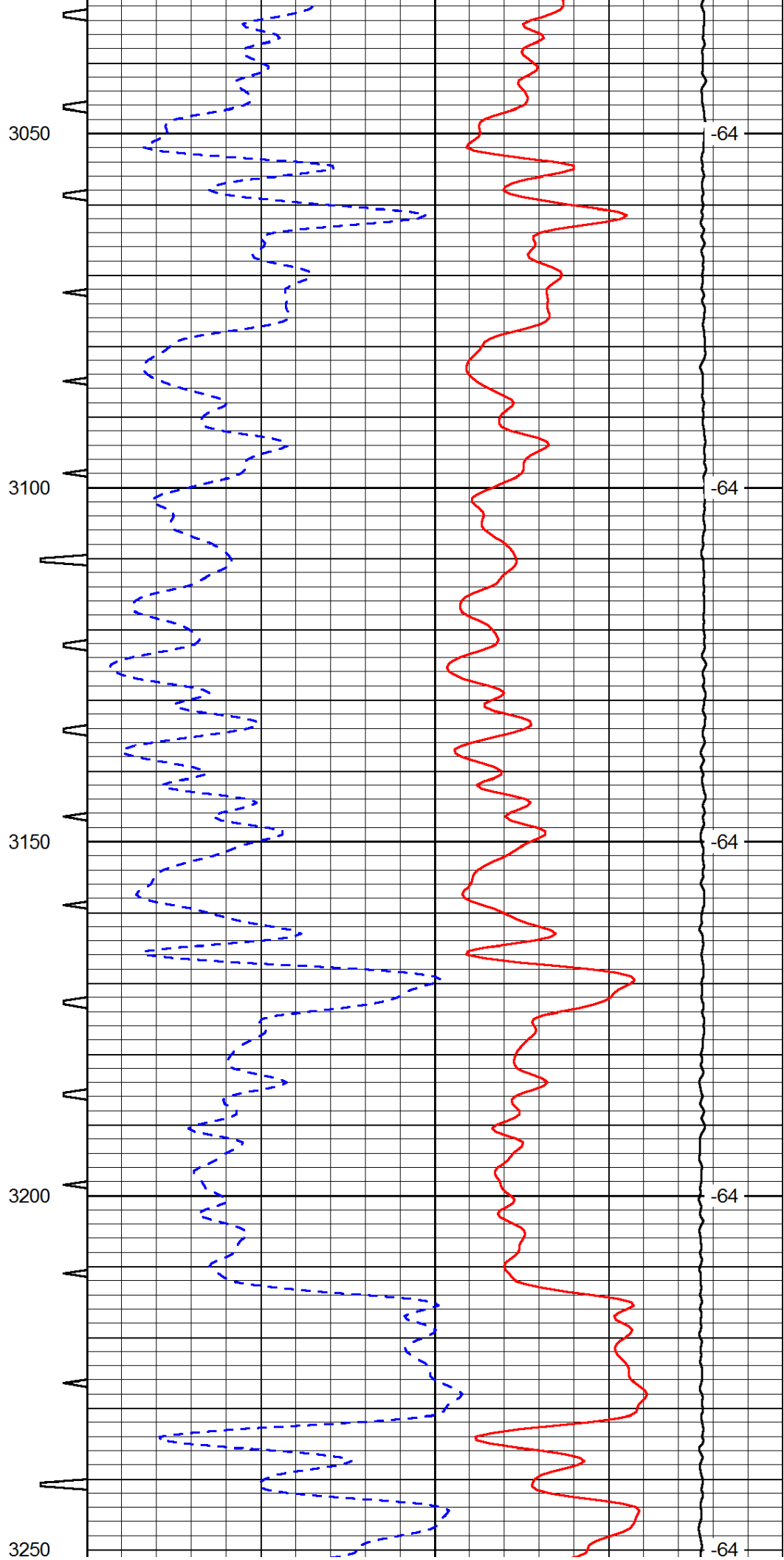
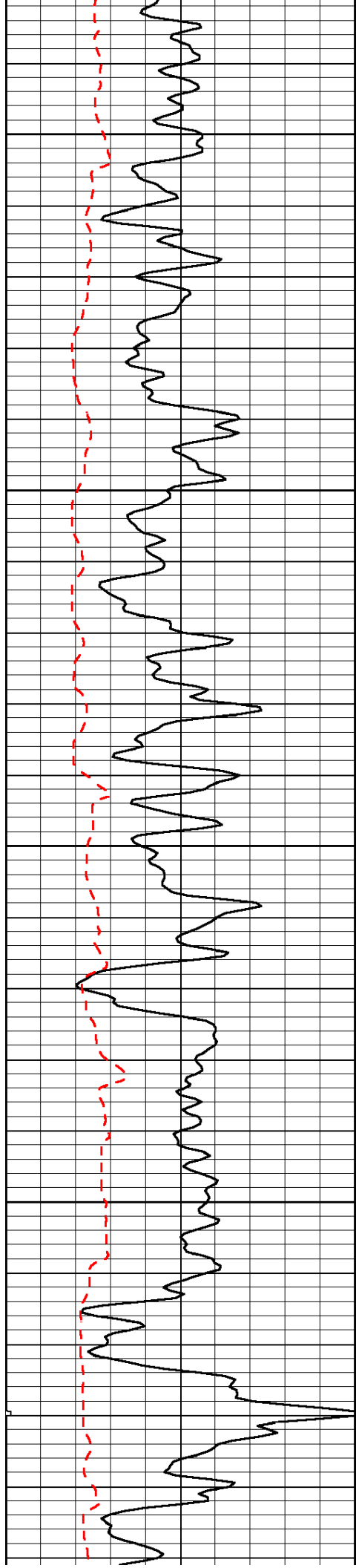


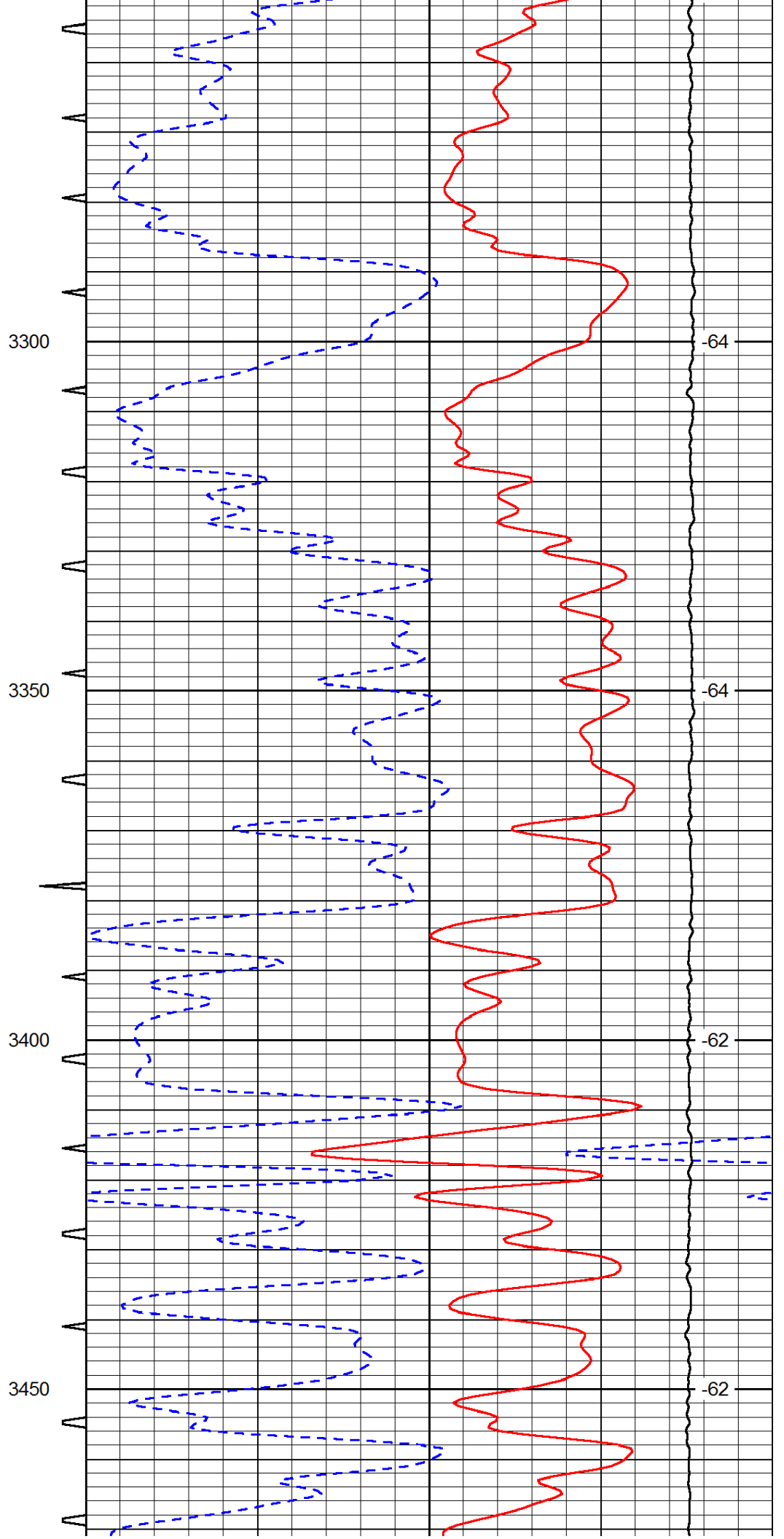
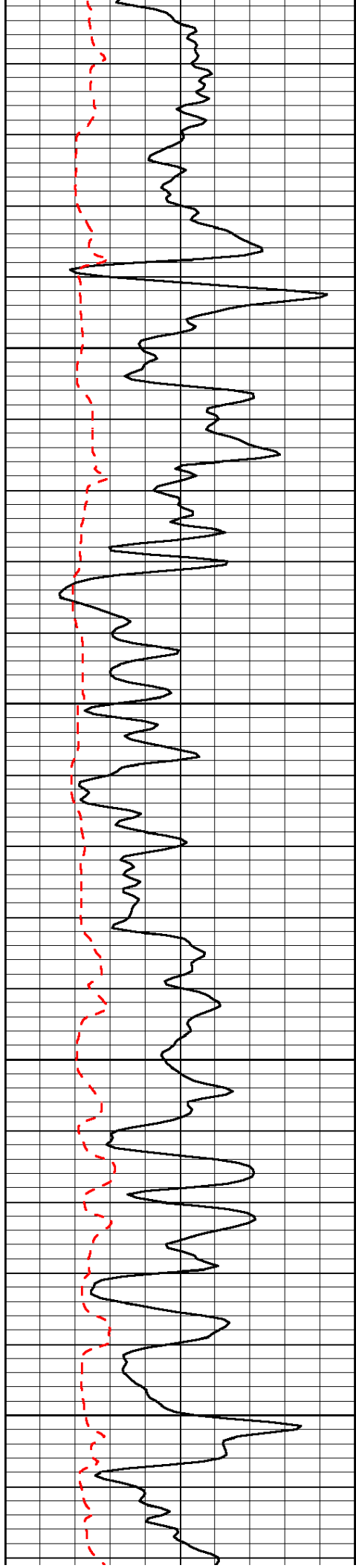


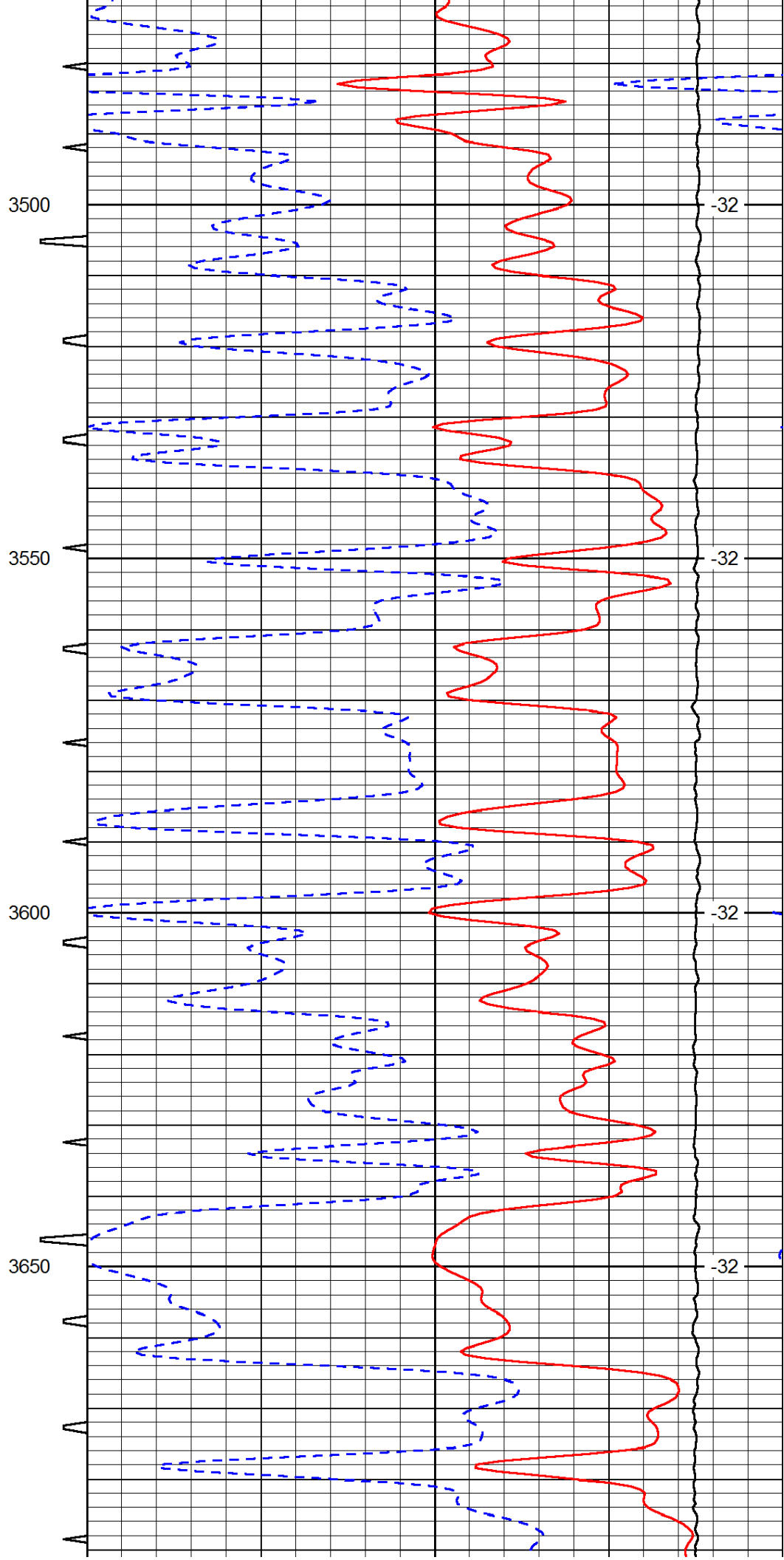
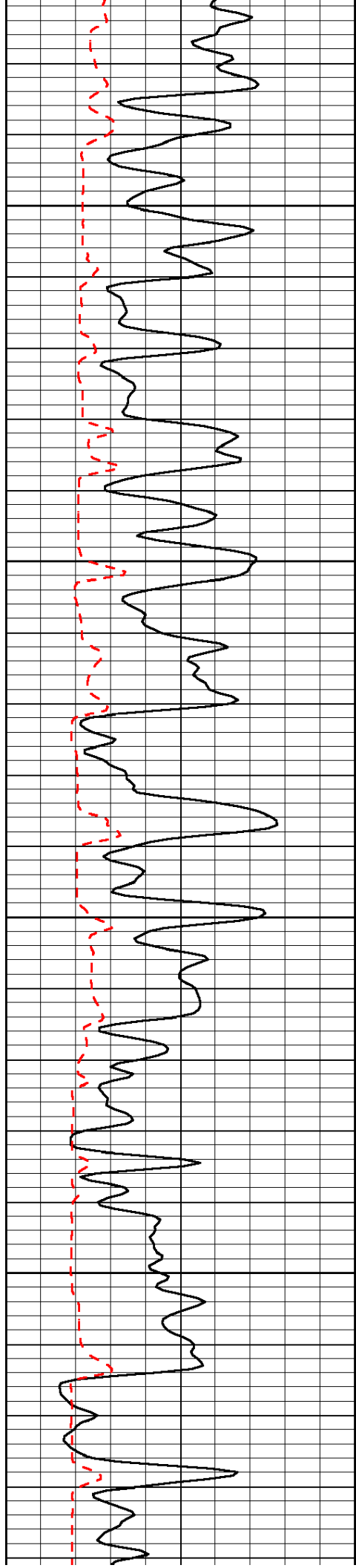


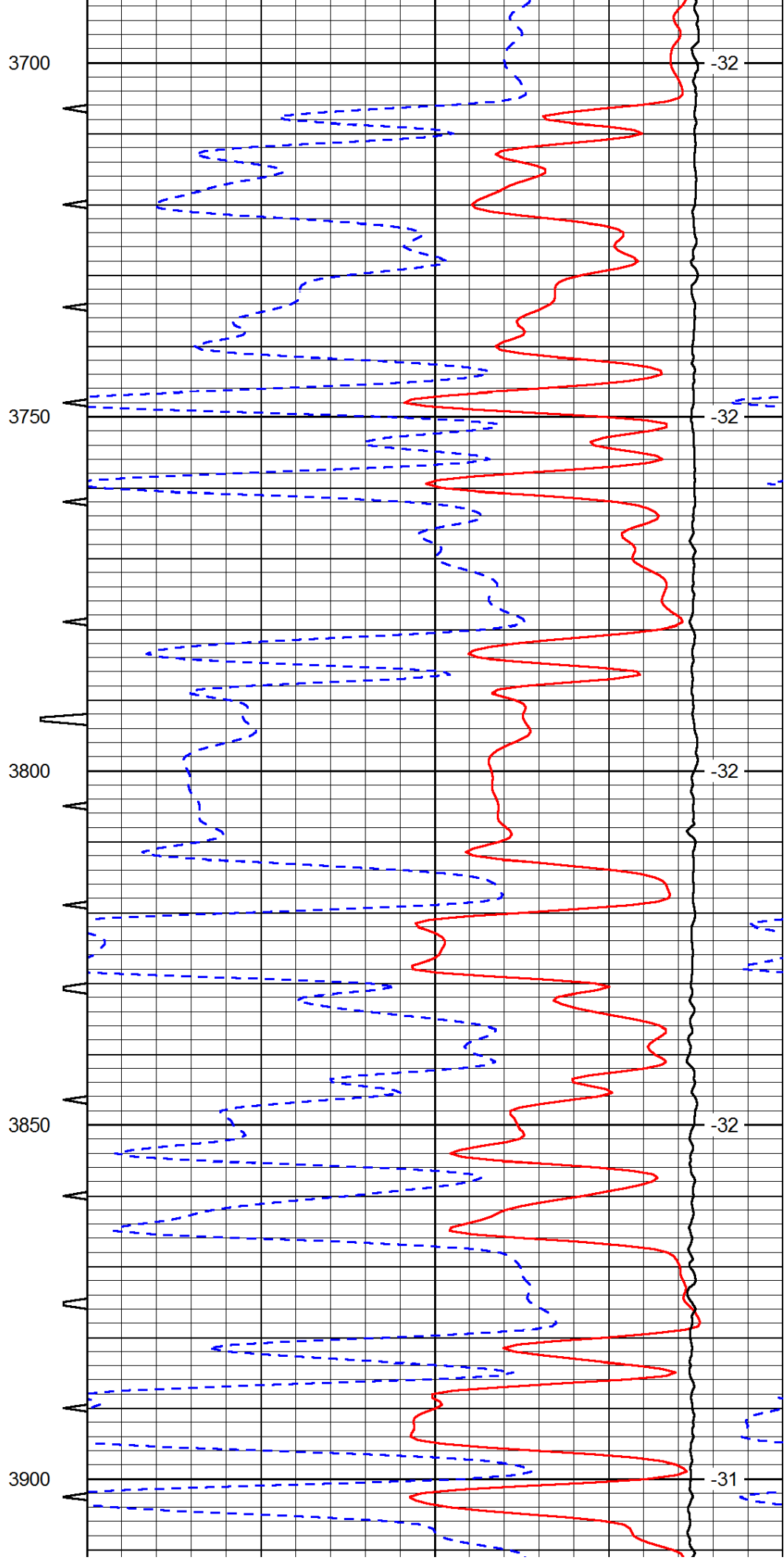
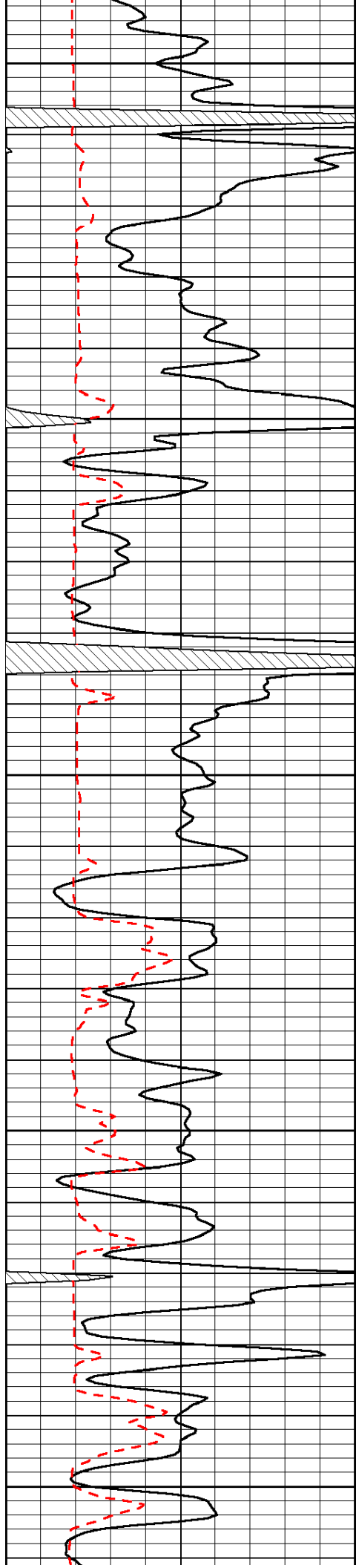


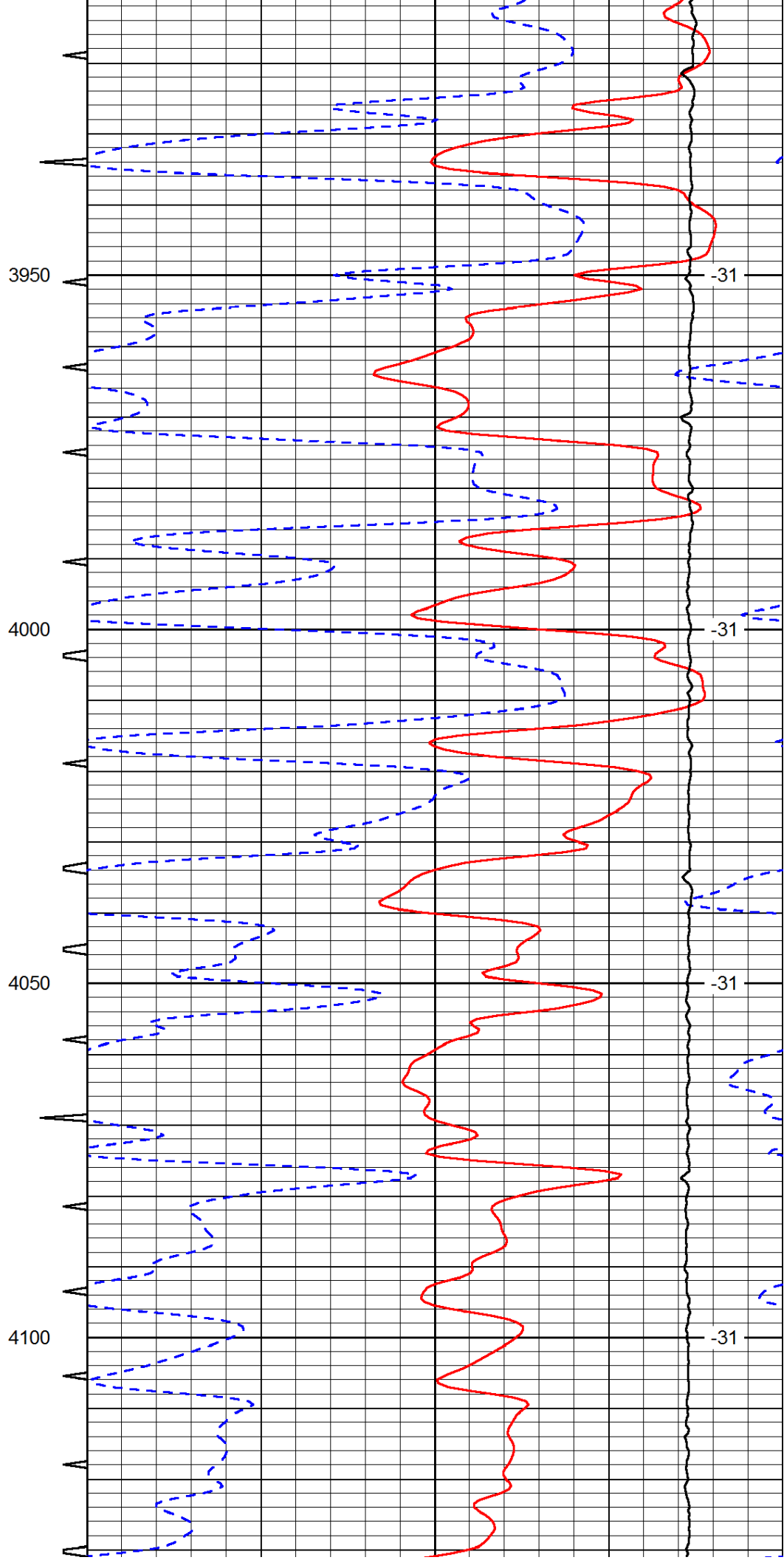
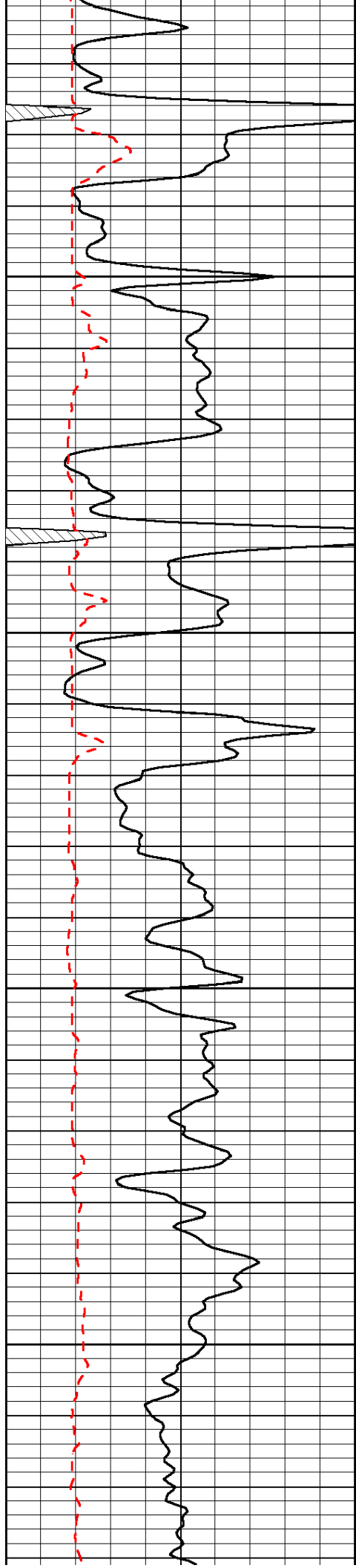


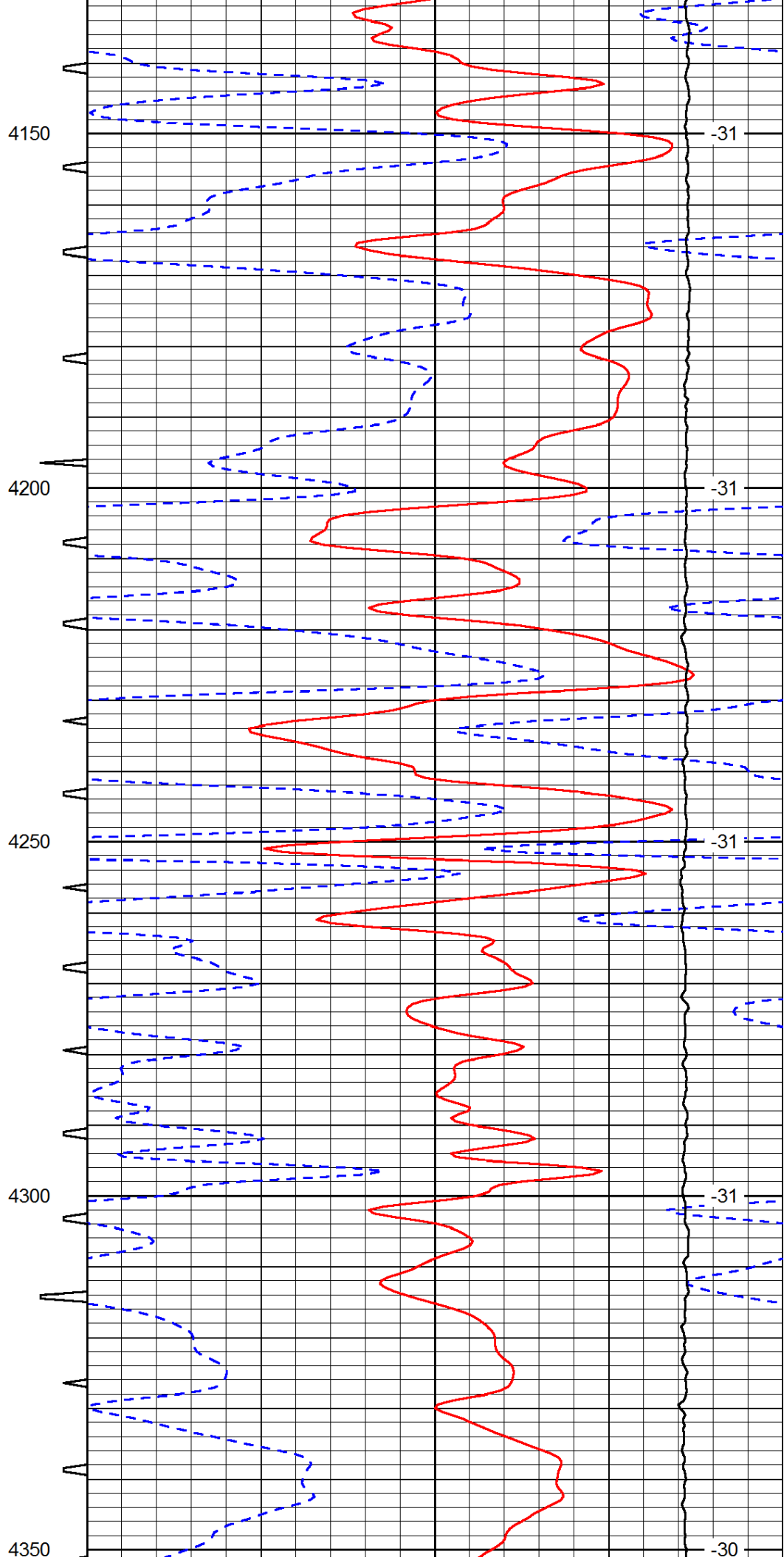
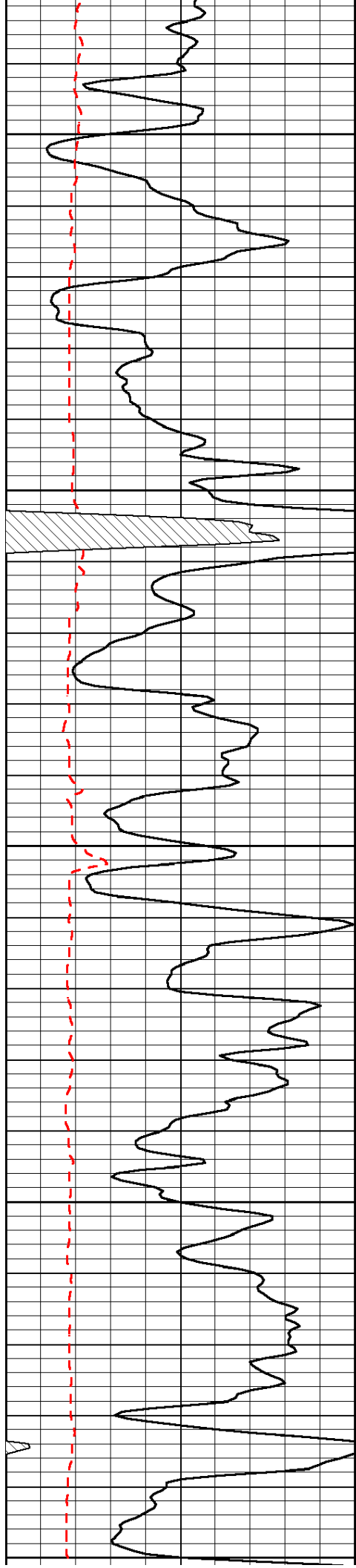


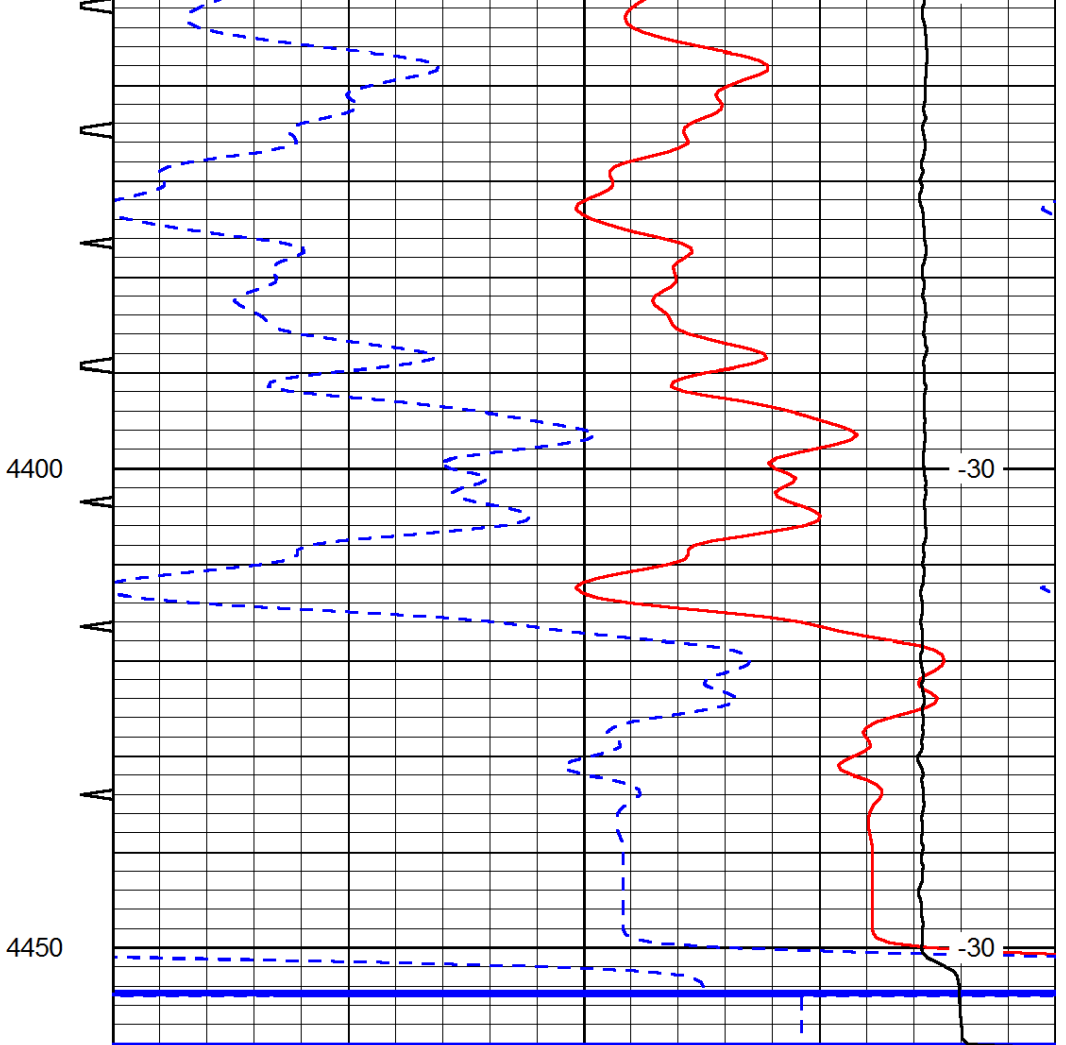
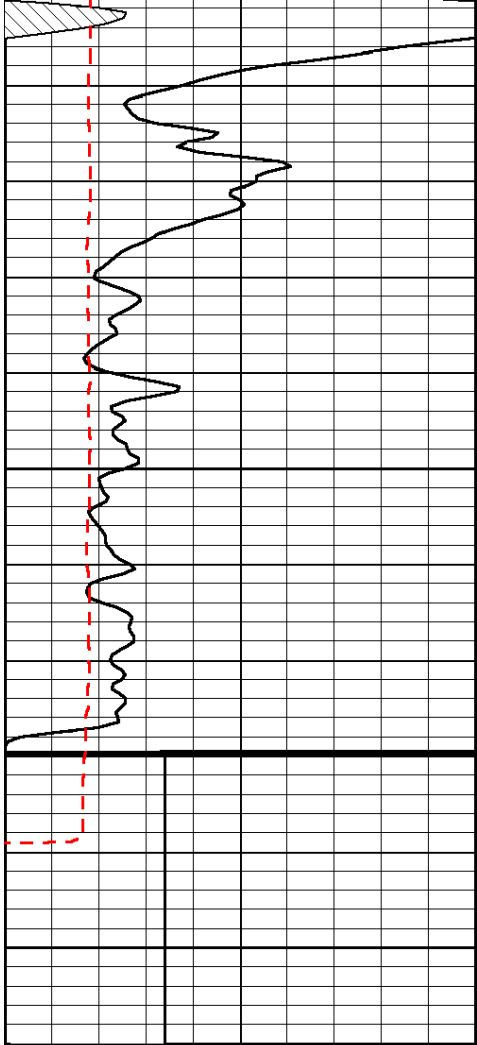












0	Gamma Ray	150	Sonic Int	140	Delta Time (usec/ft)	40
150	Gamma Ray	300	5	0	SPOR	-10
6	Caliper (GAPI)	16		15000	LTEN (lb)	0

LSPD