



Pioneer Energy Services

Dual Compensated Porosity Log

15-039-21,161-00-00

API No.

Company **Murfin Drilling Company, Inc.**
 Well **Phillips "A" No. 1-22**
 Field **None**
 County **Decatur** State **Kansas**

Location **1,800' FNL & 1,800' FEL**
 Sec: **22** Twp: **4 S** Rge: **30 W**

Other Services
DIL
MEI/BHCS

Permanent Datum **Ground Level** Elevation **2738**
 Log Measured From **Kelly Bushing** 5 Ft. Above Perm. Datum
 Drilling Measured From **Kelly Bushing**

Elevation
K.B. 2743
D.F.
G.L. 2738

Date	10/18/2012						
Run Number	One						
Type Log	CNL / CDL						
Depth Driller	4450						
Depth Logger	4451						
Bottom Logged Interval	4430						
Top Logged Interval	3500						
Type Fluid In Hole	Chemical						
Salinity, PPM CL	1,000						
Density Level	9.1						
Max. Rec. Temp. F	Full						
Operating Rig Time	121						
Equipment -- Location	5 Hours						
Recorded By	15 Hays						
Witnessed By	D Kerr						
	Rocky Milford						
Borehole Record		Casing Record					
Run No.	Bit	From	To	Size	Wgt.	From	To
1	12.25	00	221	8.625	24#	00	221
2	7.875	221	4450				

<<< Fold Here >>>

All interpretations are opinions based on inferences from electrical or other measurements and we cannot and do not guarantee the accuracy or correctness of any interpretation, and we shall not, except in the case of gross or willful negligence on our part, be liable or responsible for any loss, costs, damages, or expenses incurred or sustained by anyone resulting from any interpretation made by any of our officers, agents or employees. These interpretations are also subject to our general terms and conditions set out in our current Price Schedule.

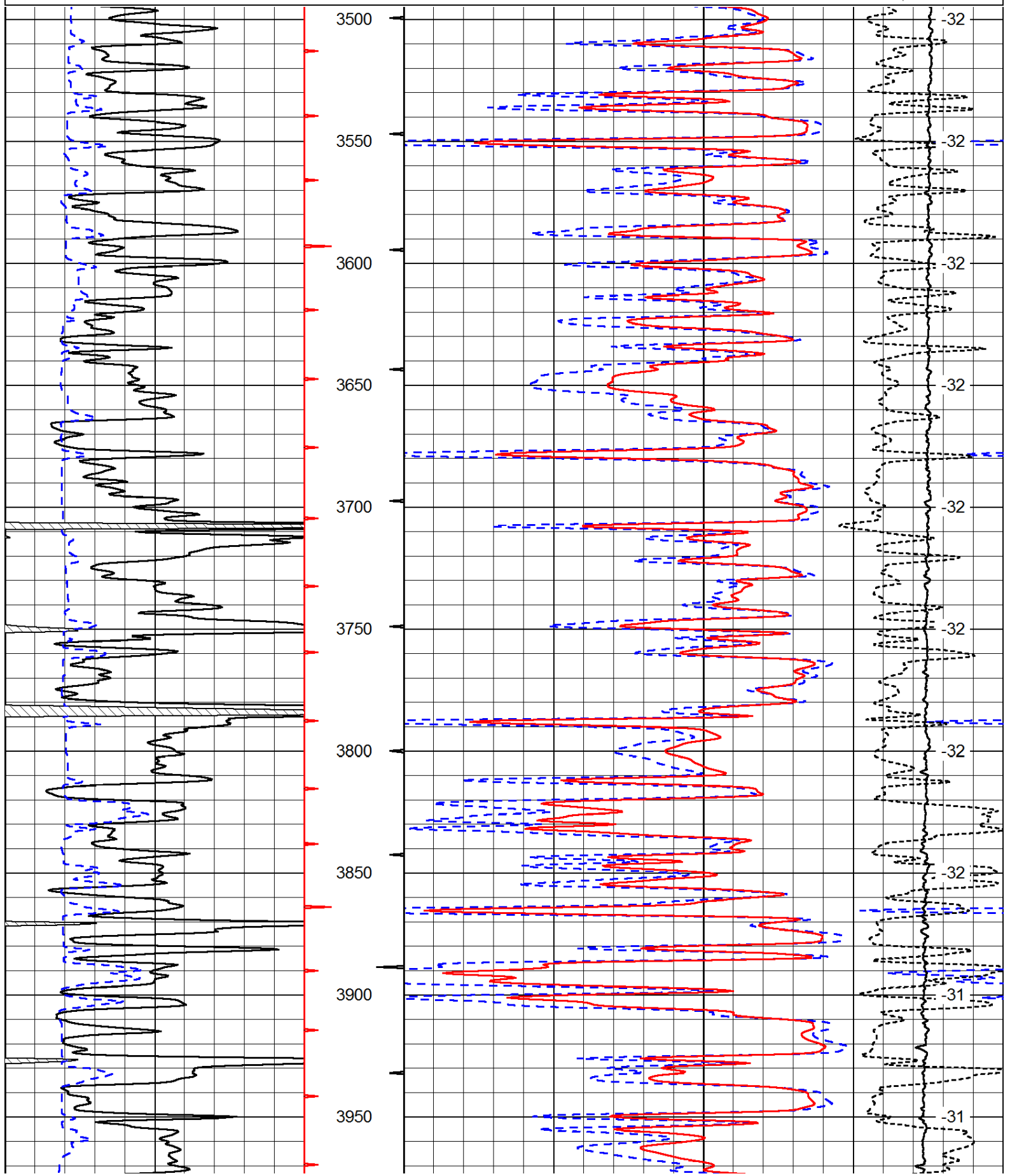
Comments

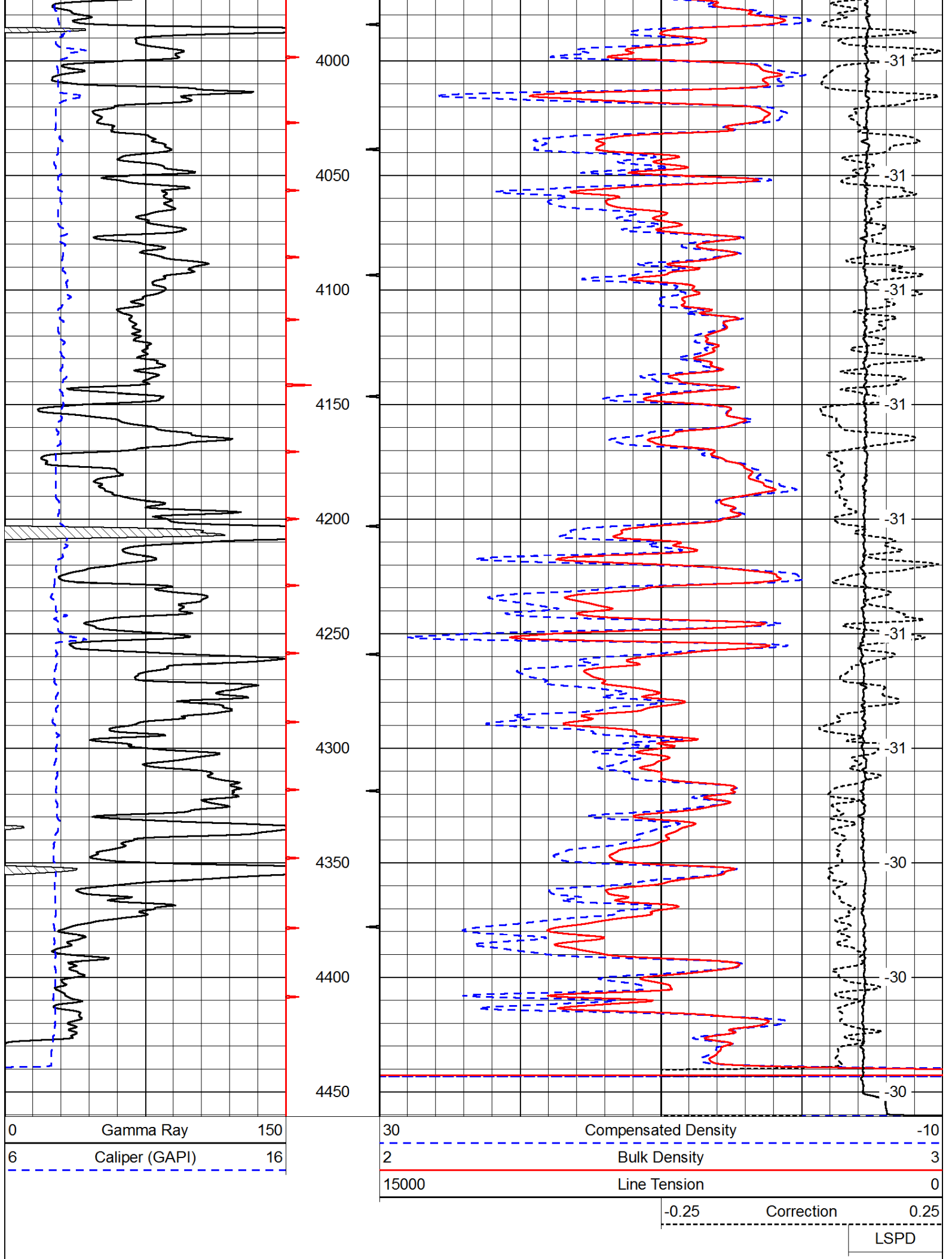
Thank you for using Pioneer Energy Services
 www.pioneer.com
 785 625 3858
 Selden KS, East to Hwy Junction 83 & Hwy 23,
 7 1/2 North to 11 S Rd., 8 West, 1 3/4 North,
 East Into, 1 Mile Into

Database File: c:\warrior\data\murfin_phillips 'a' #1-22\murfin_phillips_1-22hd.db
 Dataset Pathname: DIL\murfstk
 Presentation Format: cdl
 Dataset Creation: Fri Oct 19 00:08:57 2012
 Charted by: Depth in Feet scaled 1:600

0	Gamma Ray	150
6	Caliper (GAPI)	16

30	Compensated Density	-10
2	Bulk Density	3
15000	Line Tension	0
-0.25	Correction	0.25
		LSPD





Database File: c:\warrior\data\murfin_phillips 'a' #1-22\murfin_phillips_1-22hd.db
 Dataset Pathname: DIL/murfstk
 Presentation Format: cndlspec
 Dataset Creation: Fri Oct 19 00:08:57 2012
 Charted by: Depth in Feet scaled 1:240

0	Gamma Ray	150	30	Compensated Neutron (Limestone)	-10
6	Caliper (GAPI)	16	30	Compensated Density (Limestone)	-10
			15000	Line Tension	0
				-0.25	Correction
					0.25
					LSPD

