



**COMPLETION  
& PRODUCTION  
SERVICES CO.**

**MICRO  
LOG**

Company ABERCROMBIE ENERGY, LLC.  
Well MOORE #1-9  
Field WILDCAT  
County SCOTT  
State KANSAS

Company ABERCROMBIE ENERGY, LLC.  
Well MOORE #1-9  
Field WILDCAT  
County SCOTT State KANSAS

Location: API # : 15-171-20918-0000  
1800' FSL & 1390' FEL  
SEC 9 TWP 20S RGE 34W  
Permanent Datum GROUND LEVEL Elevation 3059  
Log Measured From KELLY BUSHING 10' A.G.L.  
Drilling Measured From KELLY BUSHING  
Other Services  
CDL/CNL/PE  
DIL/SONIC  
Elevation  
K.B. 3069  
D.F. 3067  
G.L. 3059

Date	11/14/12
Run Number	TWO
Depth Driller	4982
Depth Logger	4982
Bottom Logged Interval	4960
Top Log Interval	3600
Casing Driller	8 5/8"@301'
Casing Logger	303
Bit Size	7 7/8"
Type Fluid in Hole	CHEMICAL MUD
Density / Viscosity	9.3/48
pH / Fluid Loss	9.0/10.4
Source of Sample	FLOWLINE
Rim @ Meas. Temp	.500@90F
Rmf @ Meas. Temp	.375@90F
Rmc @ Meas. Temp	.600@90F
Source of Rmf / Rmc	MEASUREMENT
Rim @ BHT	.360@125F
Time Circulation Stopped	4.5 HOURS
Time Logger on Bottom	7:00 A.M.
Maximum Recorded Temperature	125F
Equipment Number	4854
Location	HAYS, KANSAS
Recorded By	JEFF LUEBBERS
Witnessed By	WES HANSEN

<<< Fold Here >>>

All interpretations are opinions based on inferences from electrical or other measurements and we cannot and do not guarantee the accuracy or correctness of any interpretation, and we shall not, except in the case of gross or willful negligence on our part, be liable or responsible for any loss, costs, damages, or expenses incurred or sustained by anyone resulting from any interpretation made by any of our officers, agents or employees. These interpretations are also subject to our general terms and conditions set out in our current Price Schedule.

**Comments**

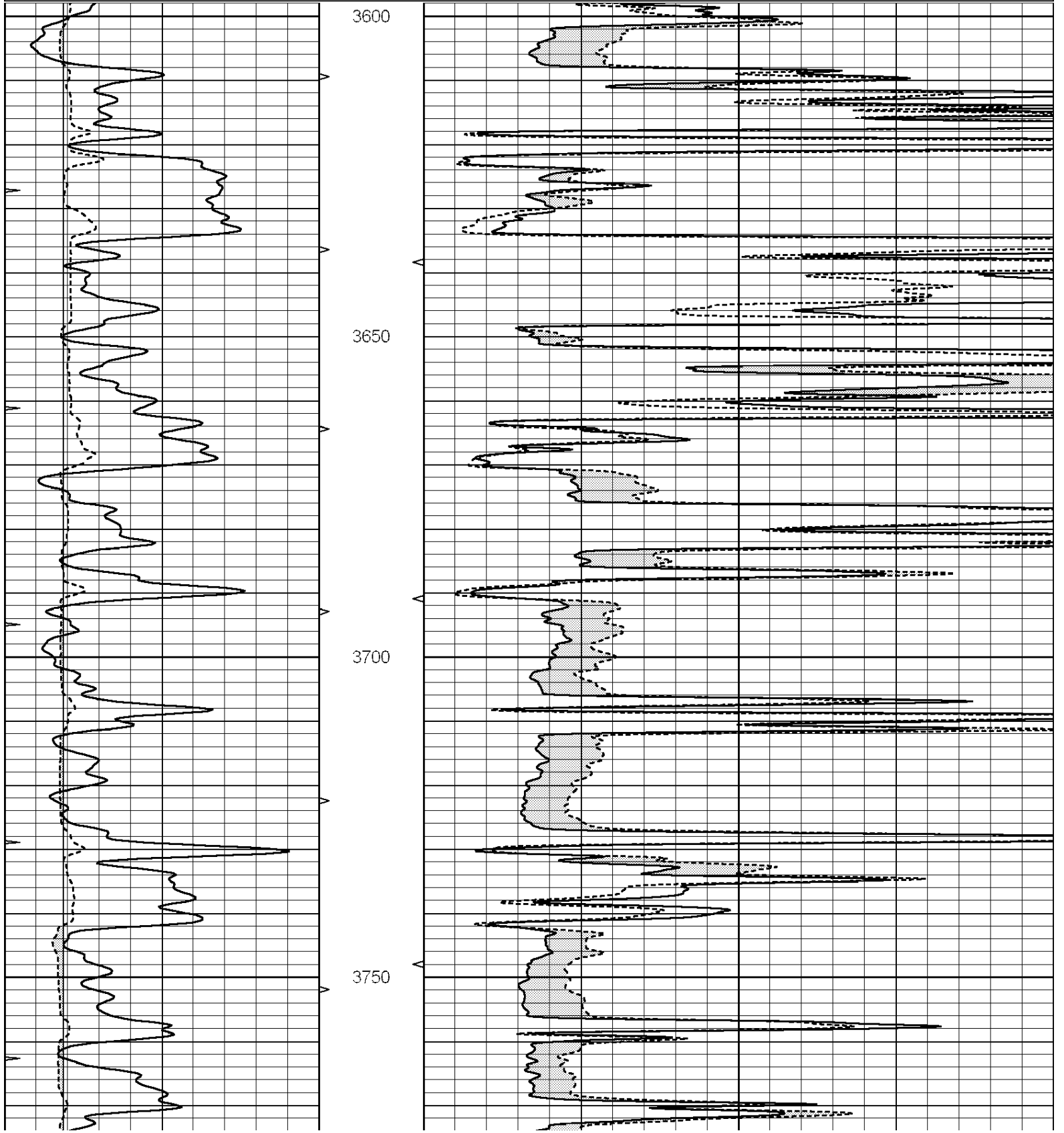
THANK YOU FOR USING "NABORS" HAYS, KANSAS (785) 628-6395  
DIRECTIONS  
MODOC, KS. & HWY 96, 11S.ON "CHEROKEE RD.", 1/2W., 1/2 N. @ORANGE POST, E. INTO

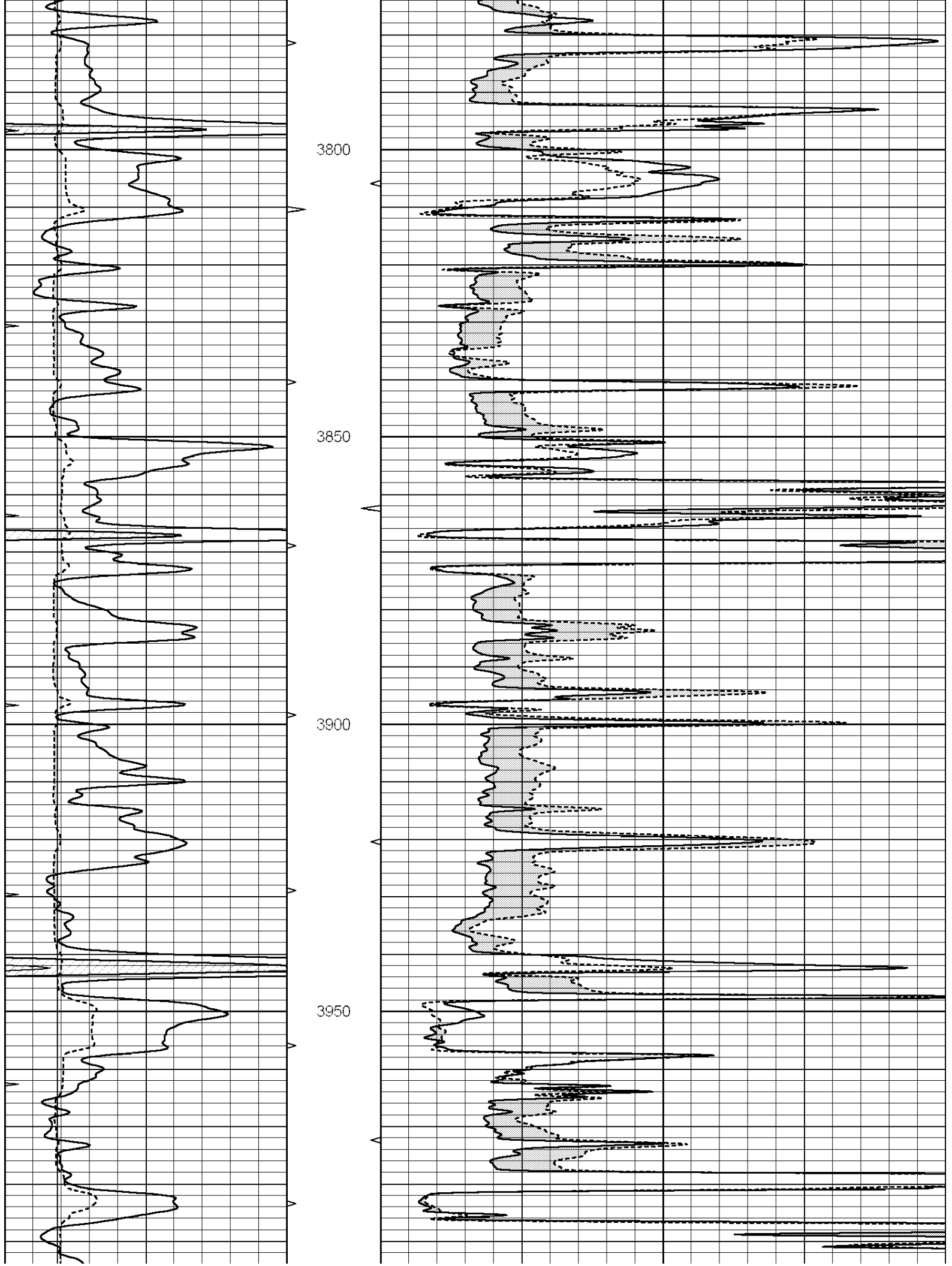


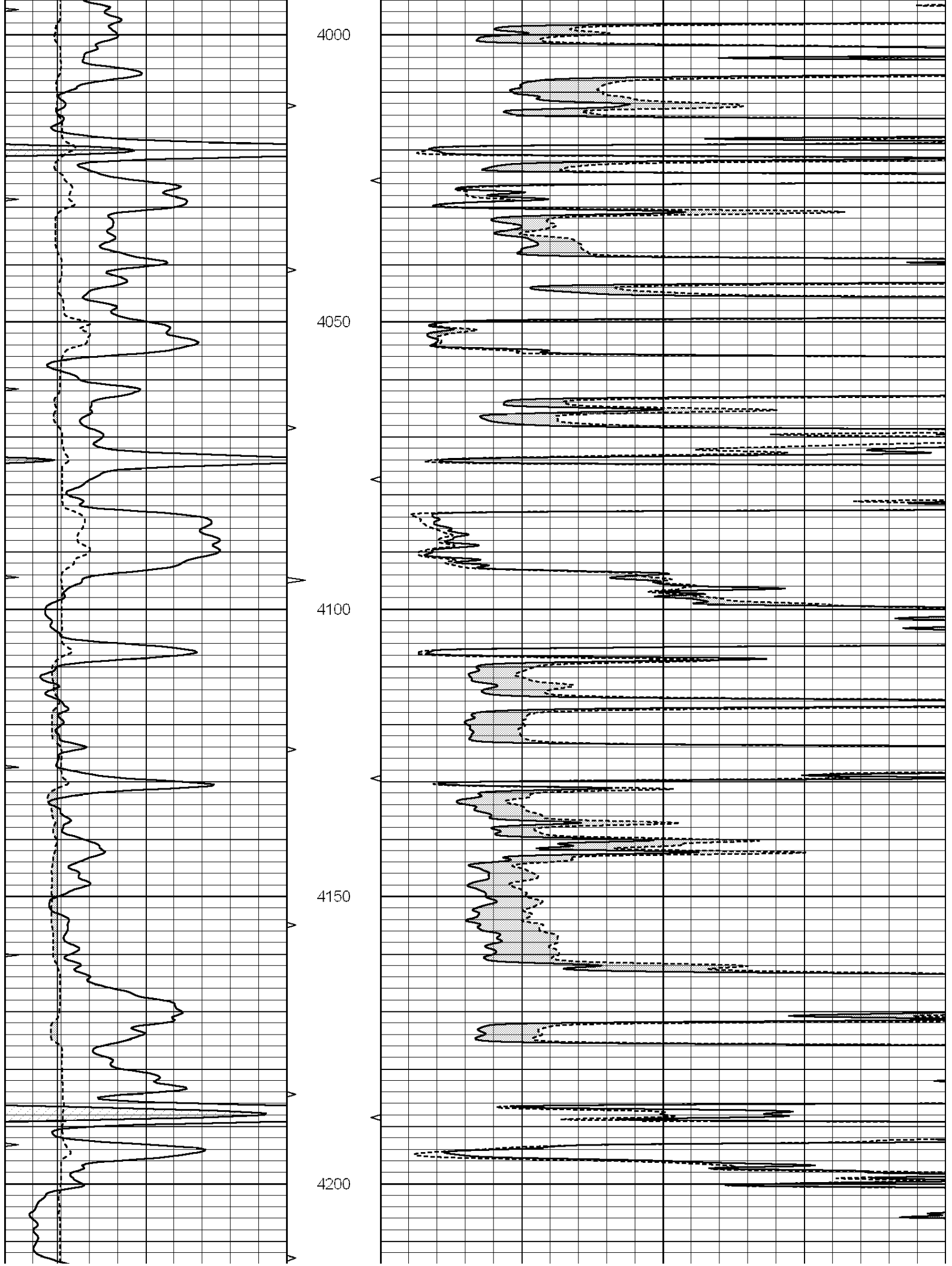
**MAIN SECTION**

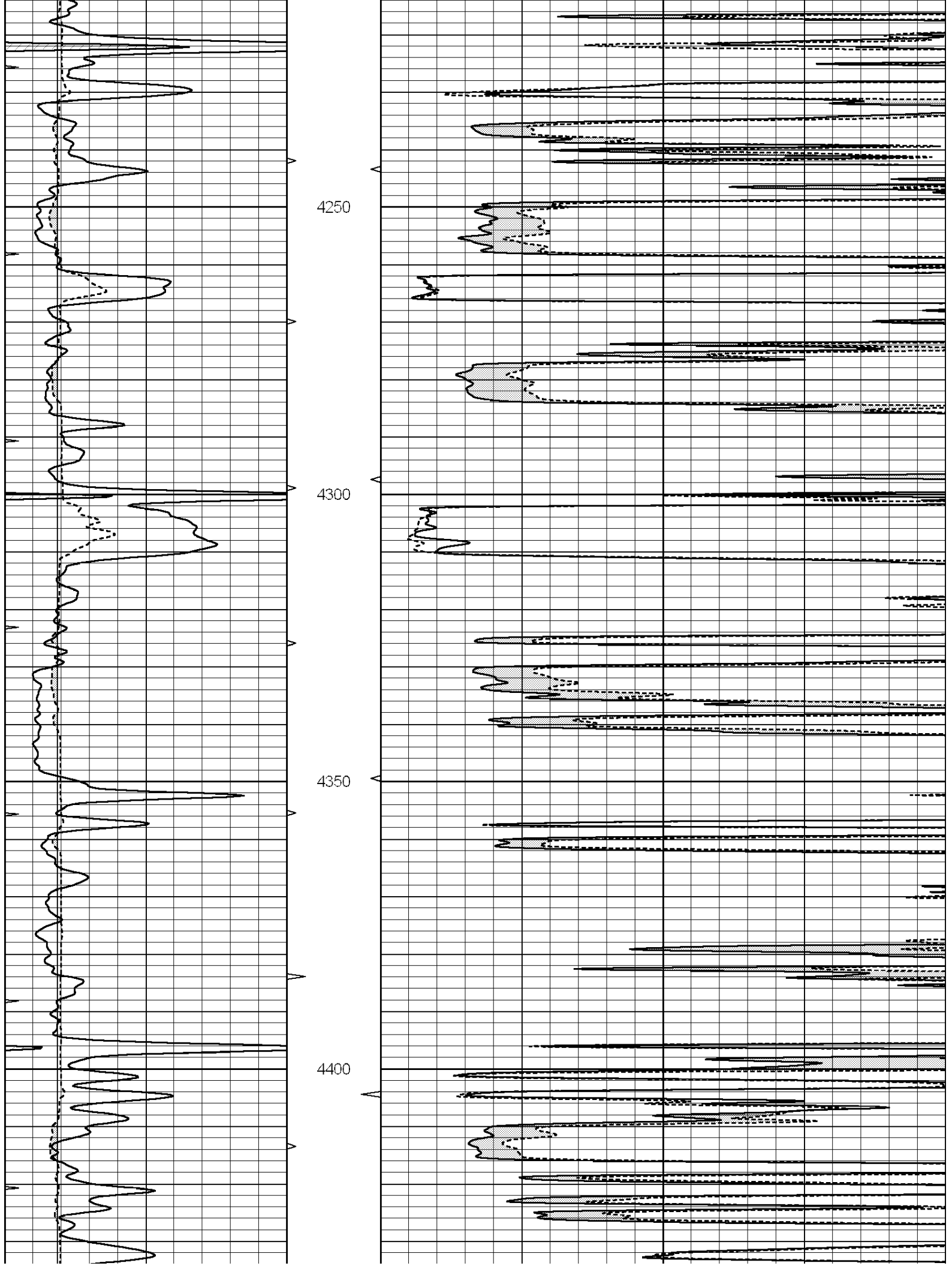
Database File: 010012pe.db  
 Dataset Pathname: pass6.1  
 Presentation Format: micro  
 Dataset Creation: Wed Nov 14 10:42:17 2012  
 Charted by: Depth in Feet scaled 1:240

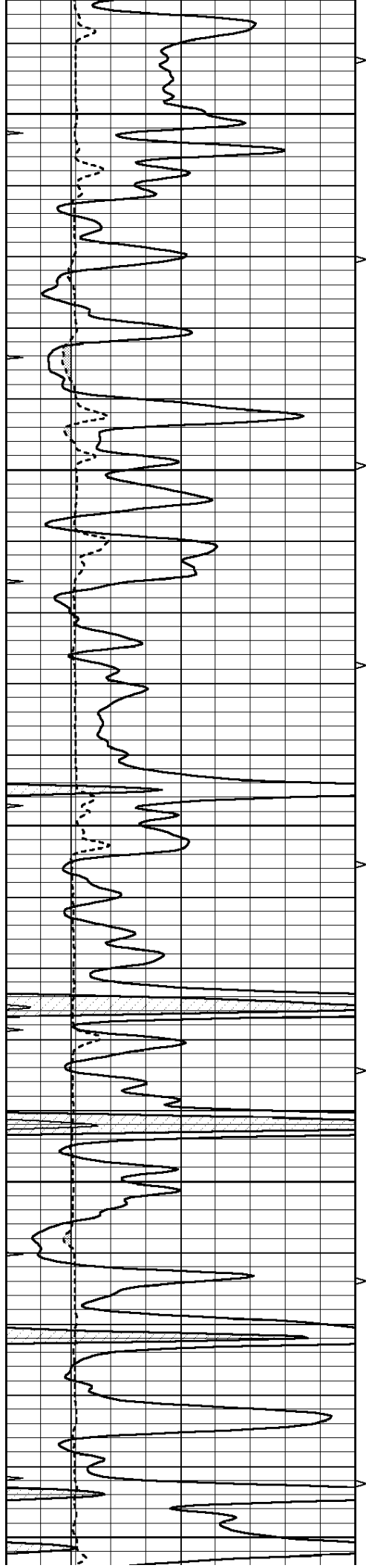
0	GAMMA RAY (GAPI)	150	ABHV	0	MEL1.5 (Ohm-m)	20
6	CALIPER (in)	16	10 (ft3)	0	MEL2.0 (Ohm-m)	20
0	MINMK	20	TBHV			
			0 (ft3)	10		











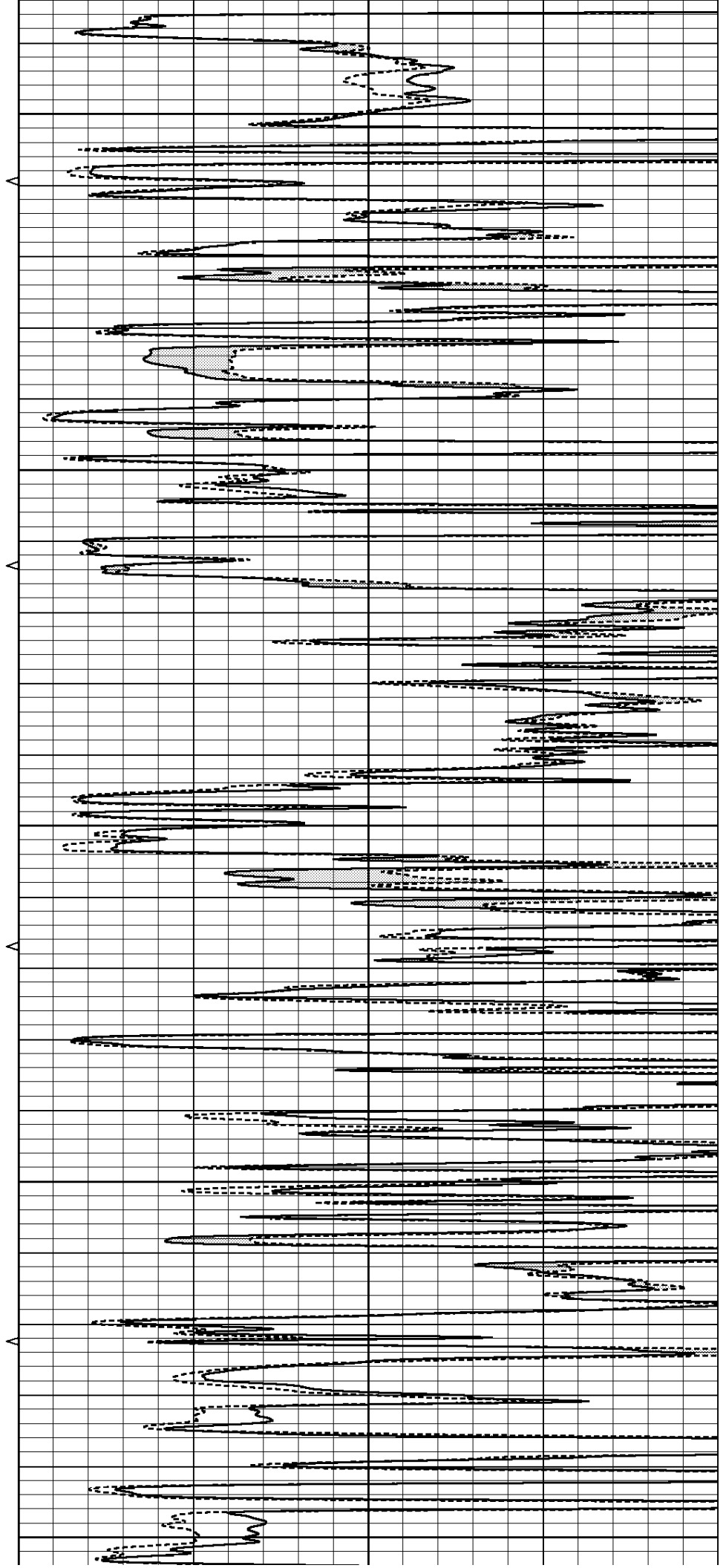
4450

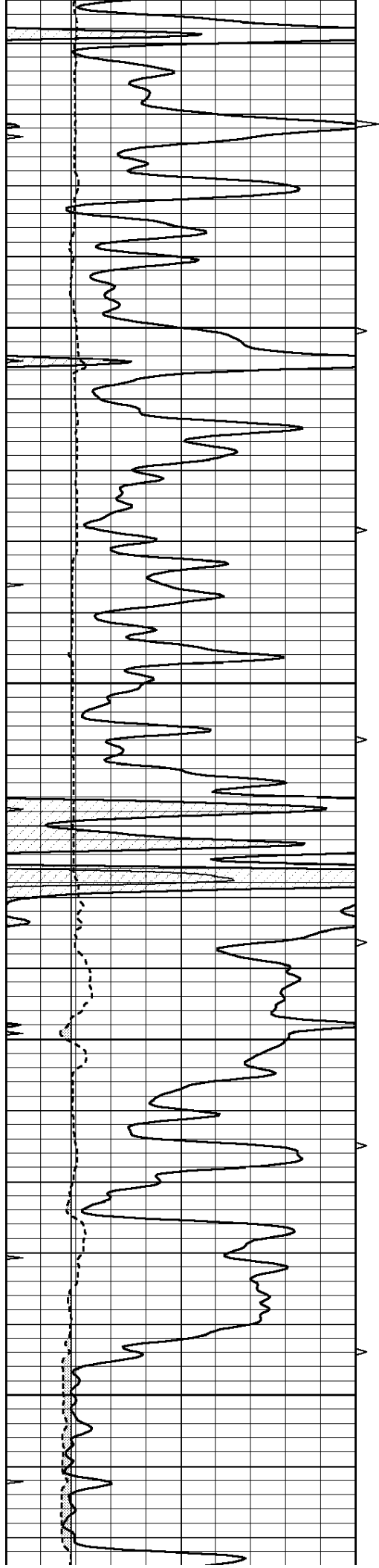
4500

4550

4600

4650



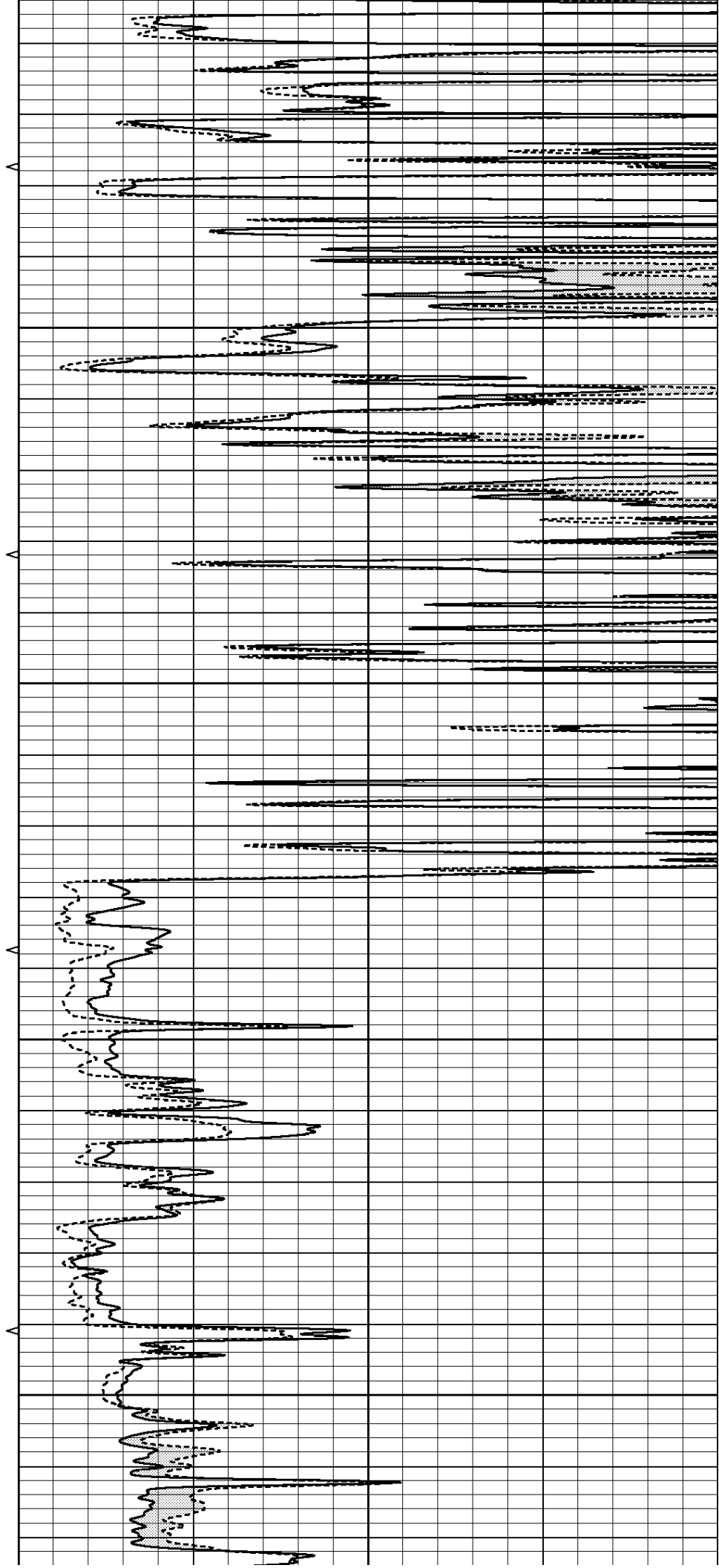


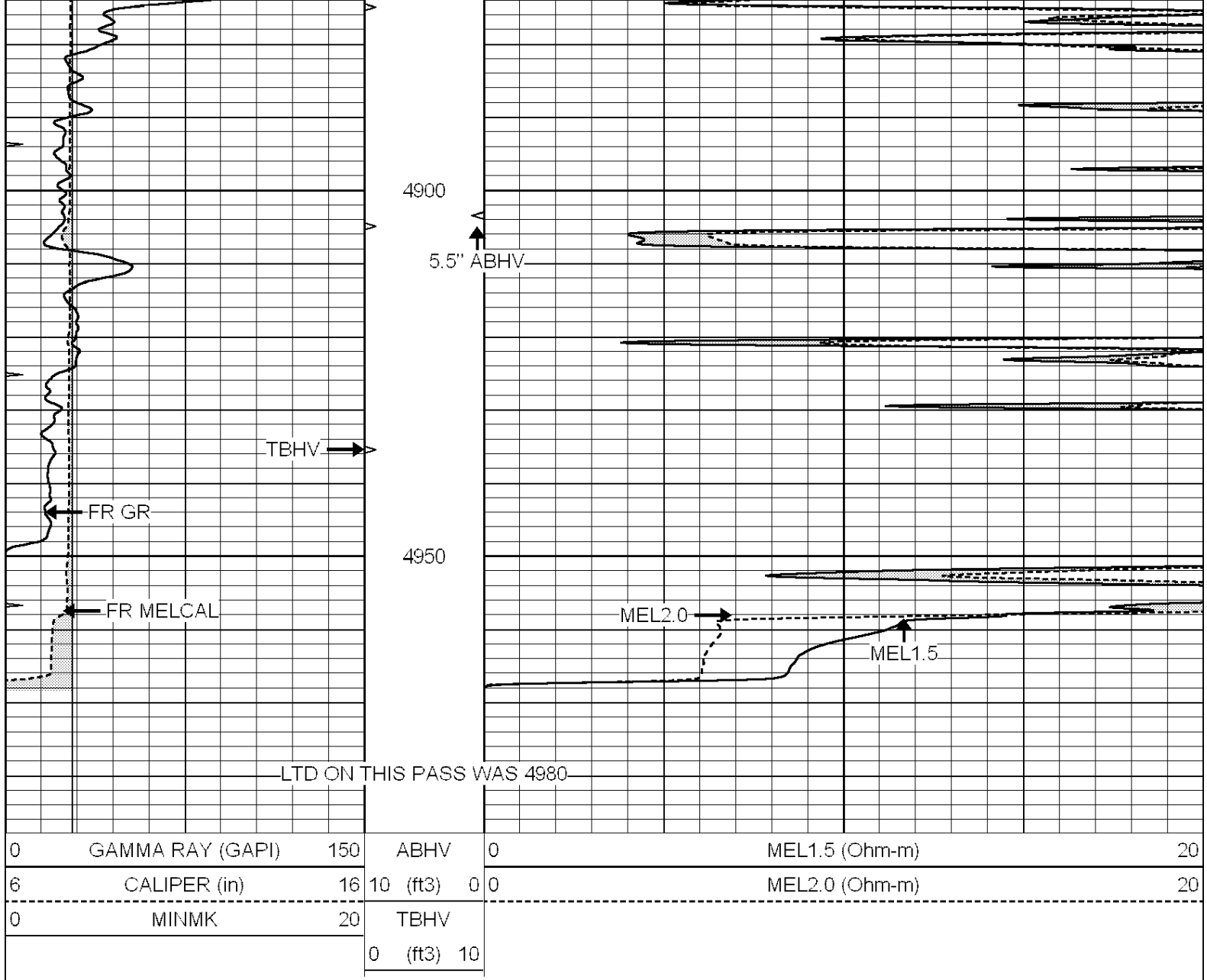
4700

4750

4800

4850

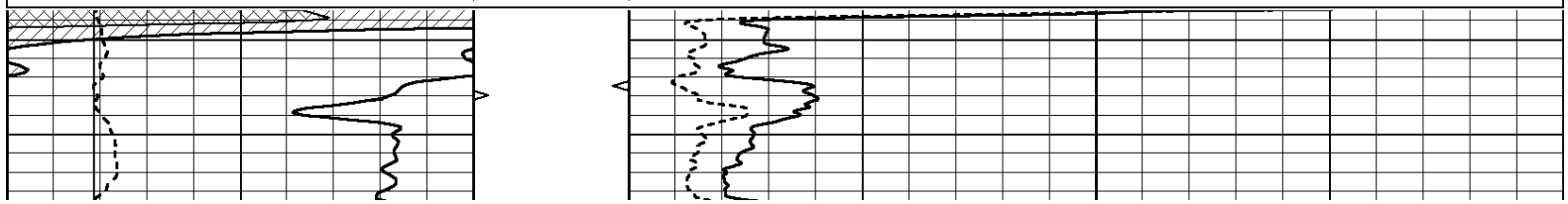




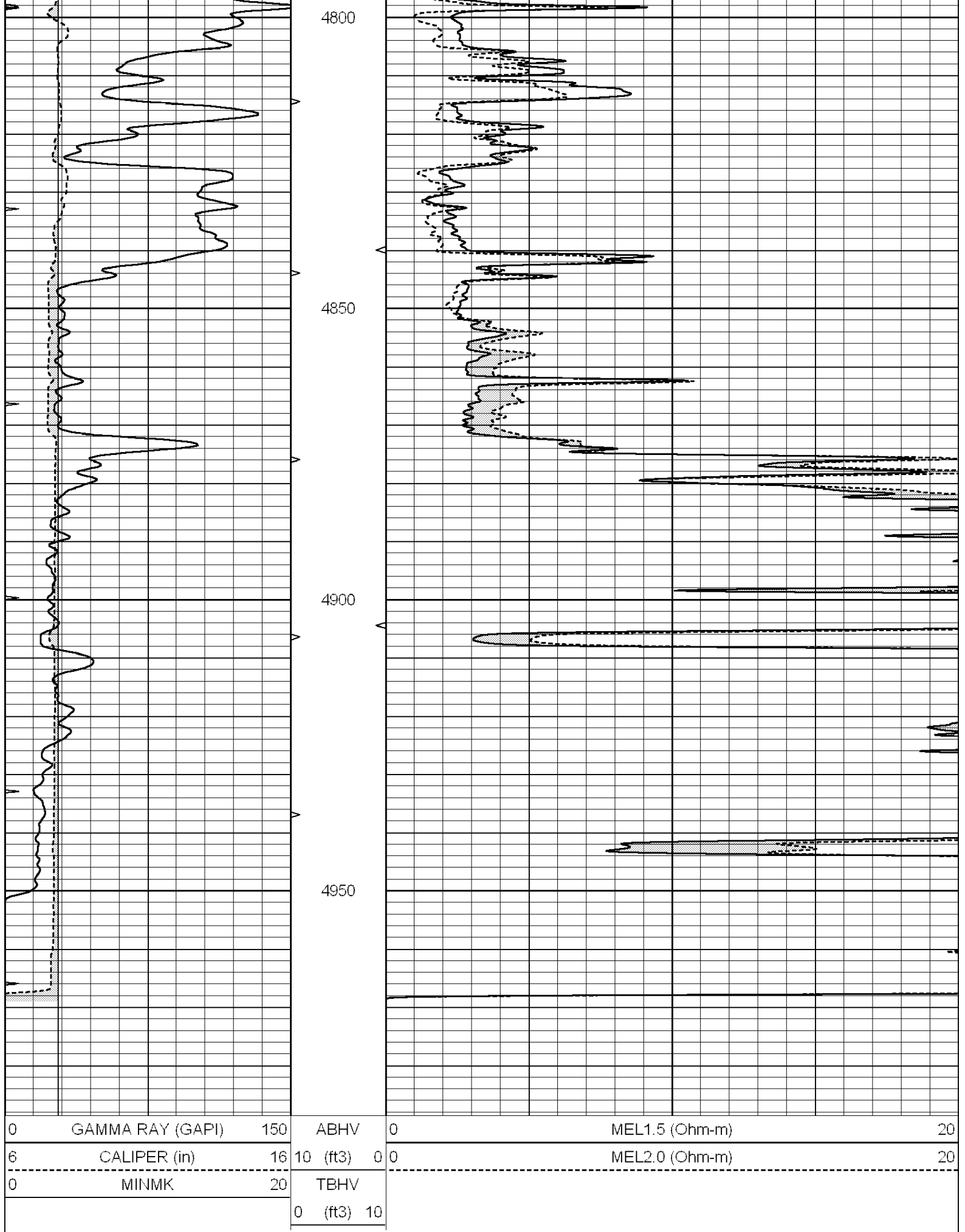
# REPEAT SECTION

Database File: 010012pe.db  
 Dataset Pathname: pass5.3  
 Presentation Format: micro  
 Dataset Creation: Wed Nov 14 10:55:36 2012  
 Charted by: Depth in Feet scaled 1:240

0	GAMMA RAY (GAPI)	150	ABHV	0	MEL1.5 (Ohm-m)	20
6	CALIPER (in)	16	10 (ft3)	0	MEL2.0 (Ohm-m)	20
0	MINMK	20	TBHV			
			0 (ft3)	10		







Calibration Report

Database File: 010012pe.db  
 Dataset Pathname: pass6.1  
 Dataset Creation: Wed Nov 14 10:42:17 2012

MICRO Calibration Report

Serial Number: 2  
 Tool Model: PROBE  
 Performed: Mon Nov 12 13:35:11 2012

Caliper Calibration:	Gain=3.929	Offset=3.858
	Low Cal	High Cal
References	8.300	15.000
Readings	1.130	2.835

1.5" Calibration:	Gain=25.000	Offset=0.000
	Low Cal	High Cal
References	0.000	20.000
Readings	0.065	1.210

2" Calibration:	Gain=40.000	Offset=-0.600
	Low Cal	High Cal
References	0.000	20.000
Readings	0.012	1.043

Gamma Ray Calibration Report

Serial Number: GR4  
 Tool Model: OPEN  
 Performed: Mon Nov 12 14:12:55 2012

Calibrator Value:	200.0	GAPI
Background Reading:	0.0	cps
Calibrator Reading:	189.0	cps
Sensitivity:	1.5000	GAPI/cps