



**COMPLETION  
& PRODUCTION  
SERVICES CO.**

**COMPENSATED  
DENSITY / NEUTRON  
PE LOG**

Company ABERCROMBIE ENERGY, LLC.  
Well MOORE #1-9  
Field WILDCAT  
County SCOTT  
State KANSAS

Company ABERCROMBIE ENERGY, LLC.  
Well MOORE #1-9  
Field WILDCAT  
County SCOTT State KANSAS

Location: API # : 15-171-20918-0000  
1800' FSL & 1390' FEL  
SEC 9 TWP 20S RGE 34W  
Permanent Datum GROUND LEVEL Elevation 3059  
Log Measured From KELLY BUSHING 10' A.G.L.  
Drilling Measured From KELLY BUSHING  
Other Services  
DIL/MEL  
SONIC  
Elevation  
K.B. 3069  
D.F. 3067  
G.L. 3059

Date	11/14/12
Run Number	ONE
Depth Driller	4982
Depth Logger	4982
Bottom Logged Interval	4958
Top Log Interval	3600
Casing Driller	8 5/8"@301'
Casing Logger	303
Bit Size	7 7/8"
Type Fluid in Hole	CHEMICAL MUD
Density / Viscosity	9.3/48
pH / Fluid Loss	9.0/10.4
Source of Sample	FLOWLINE
Rim @ Meas. Temp	.500@90F
Rmf @ Meas. Temp	.375@90F
Rmc @ Meas. Temp	.600@90F
Source of Rmf / Rmc	MEASUREMENT
Rim @ BHT	.360@125F
Time Circulation Stopped	2.5 HOURS
Time Logger on Bottom	7:00 A.M.
Maximum Recorded Temperature	125F
Equipment Number	4854
Location	HAYS, KANSAS
Recorded By	JEFF LUEBBERS
Witnessed By	WES HANSEN

<<< Fold Here >>>

All interpretations are opinions based on inferences from electrical or other measurements and we cannot and do not guarantee the accuracy or correctness of any interpretation, and we shall not, except in the case of gross or willful negligence on our part, be liable or responsible for any loss, costs, damages, or expenses incurred or sustained by anyone resulting from any interpretation made by any of our officers, agents or employees. These interpretations are also subject to our general terms and conditions set out in our current Price Schedule.

**Comments**

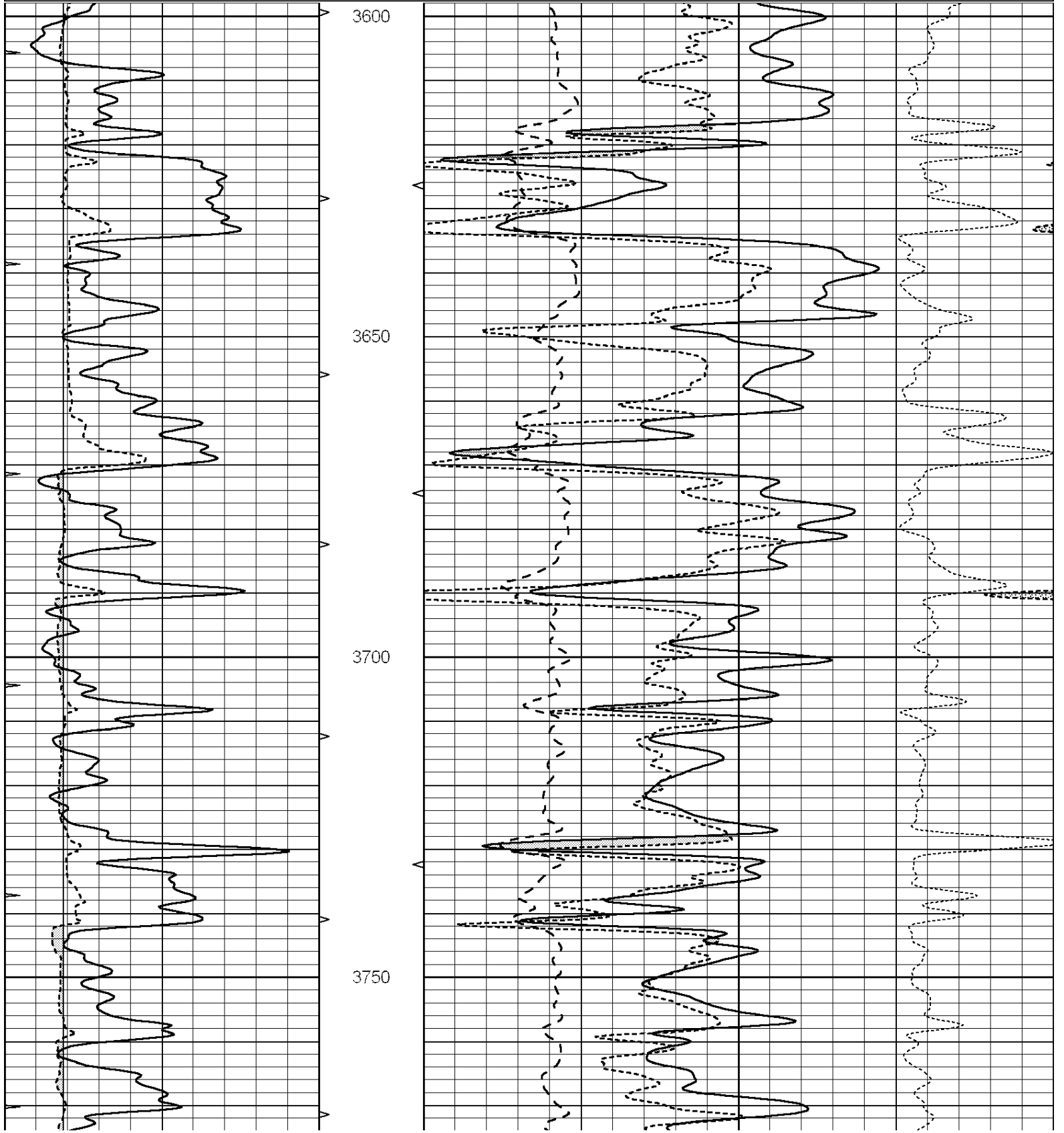
THANK YOU FOR USING "NABORS" HAYS, KANSAS (785) 628-6395  
DIRECTIONS  
MODOC, KS. & HWY 96, 11S.ON "CHEROKEE RD.", 1/2W., 1/2 N. @ORANGE POST, E. INTO

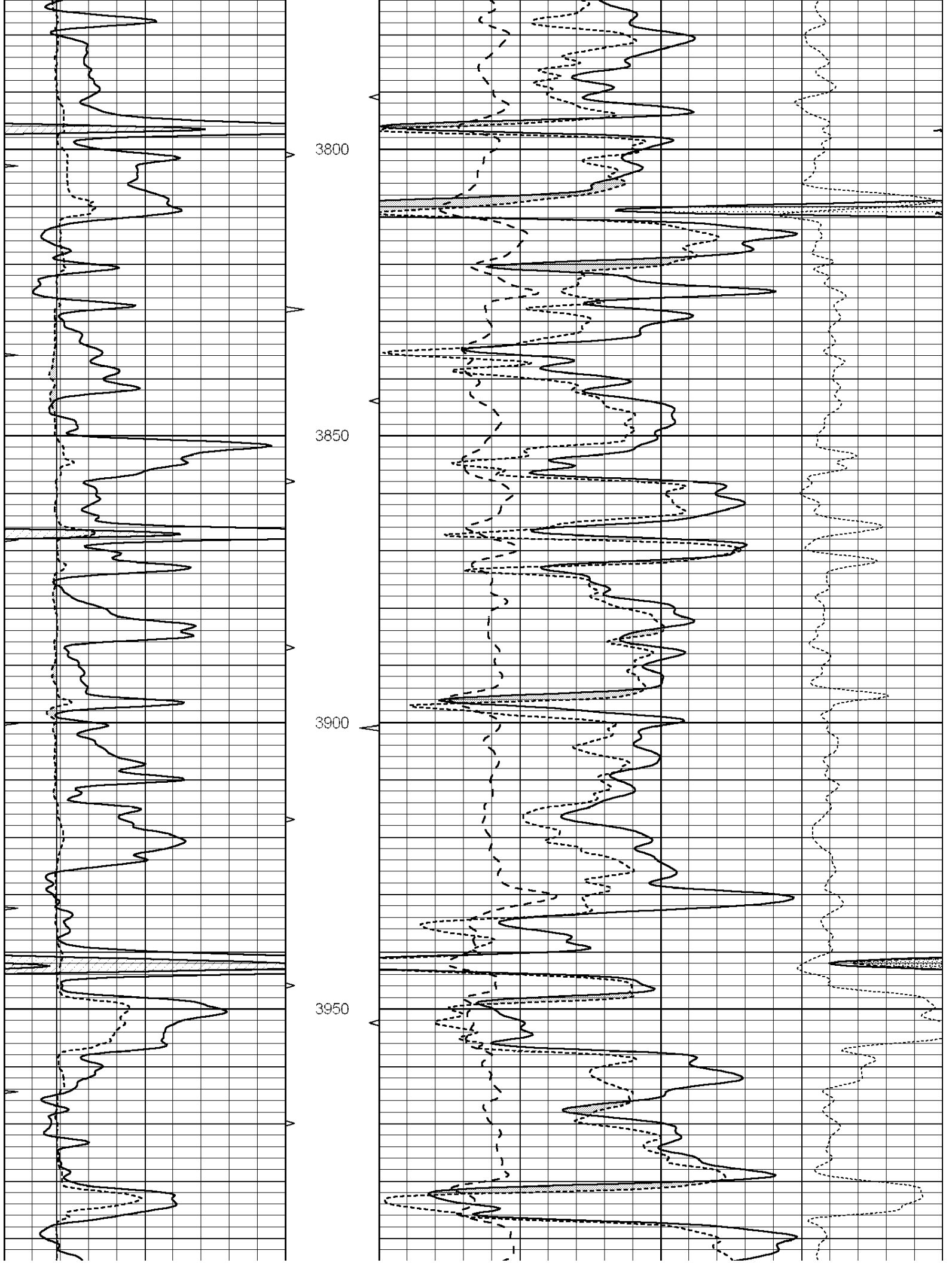


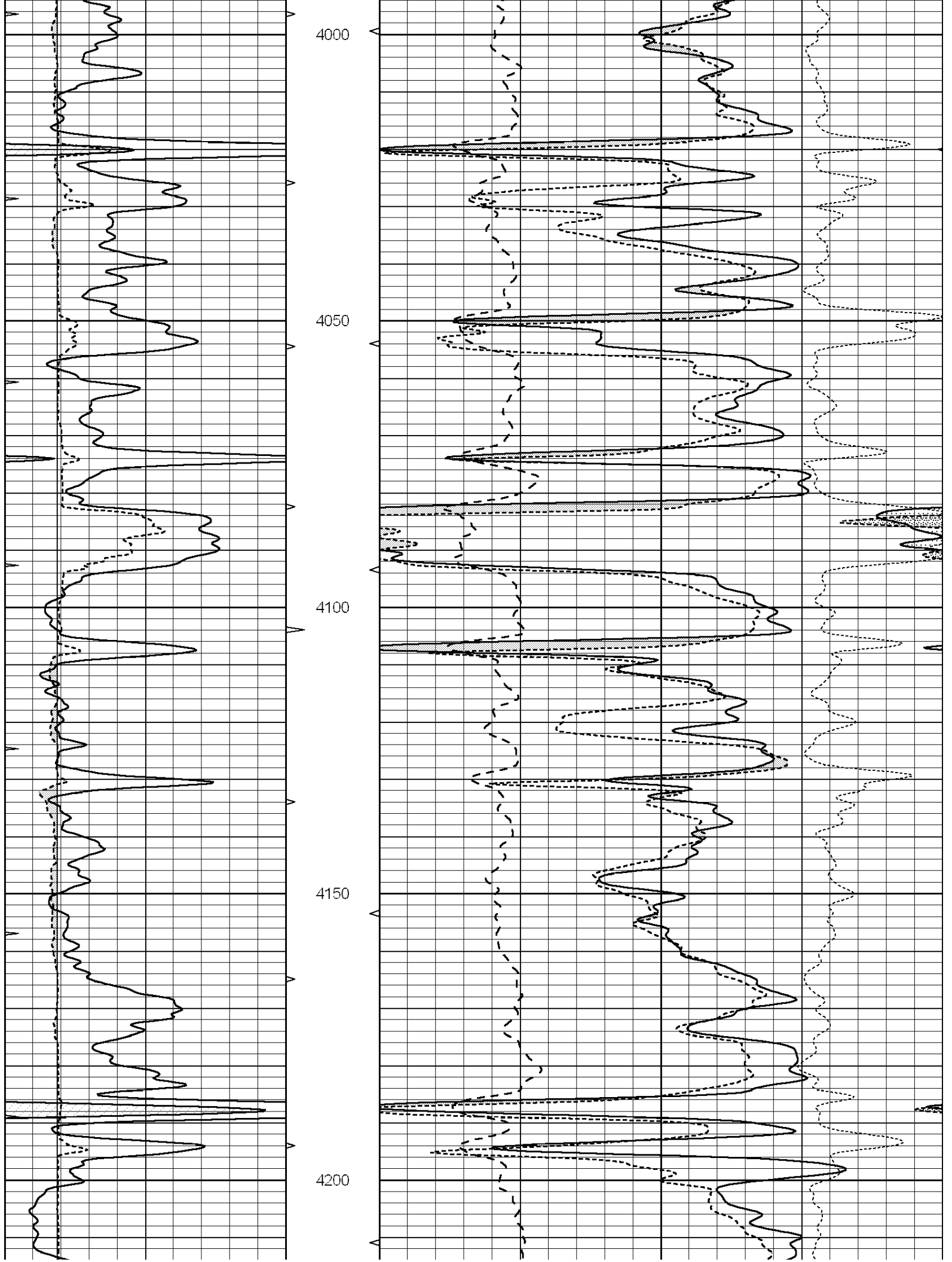
**MAIN SECTION**

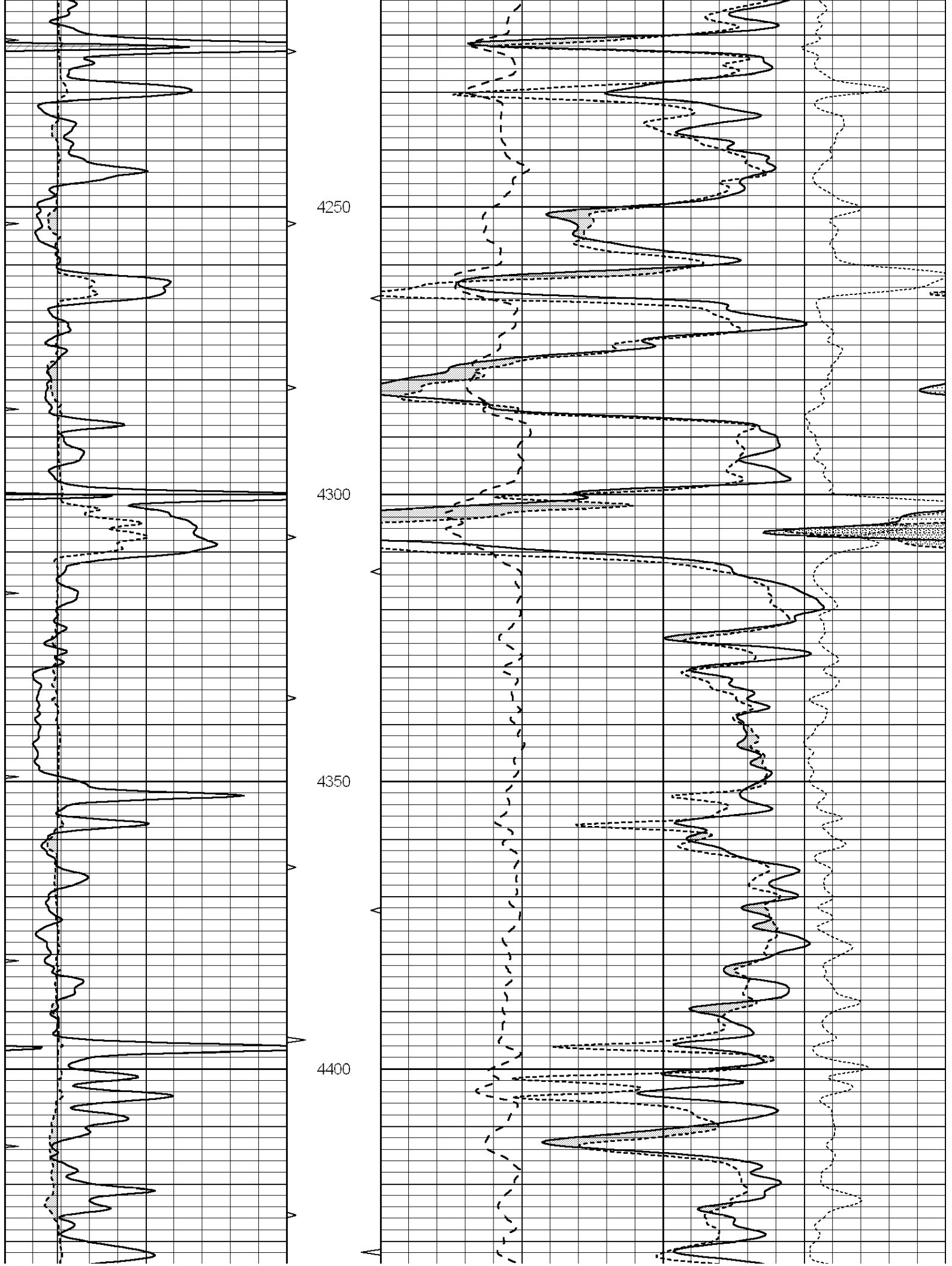
Database File: 010012pe.db  
 Dataset Pathname: pass3.8  
 Presentation Format: ldt\_neu  
 Dataset Creation: Wed Nov 14 09:03:16 2012 by Calc SOC 120430  
 Charted by: Depth in Feet scaled 1:240

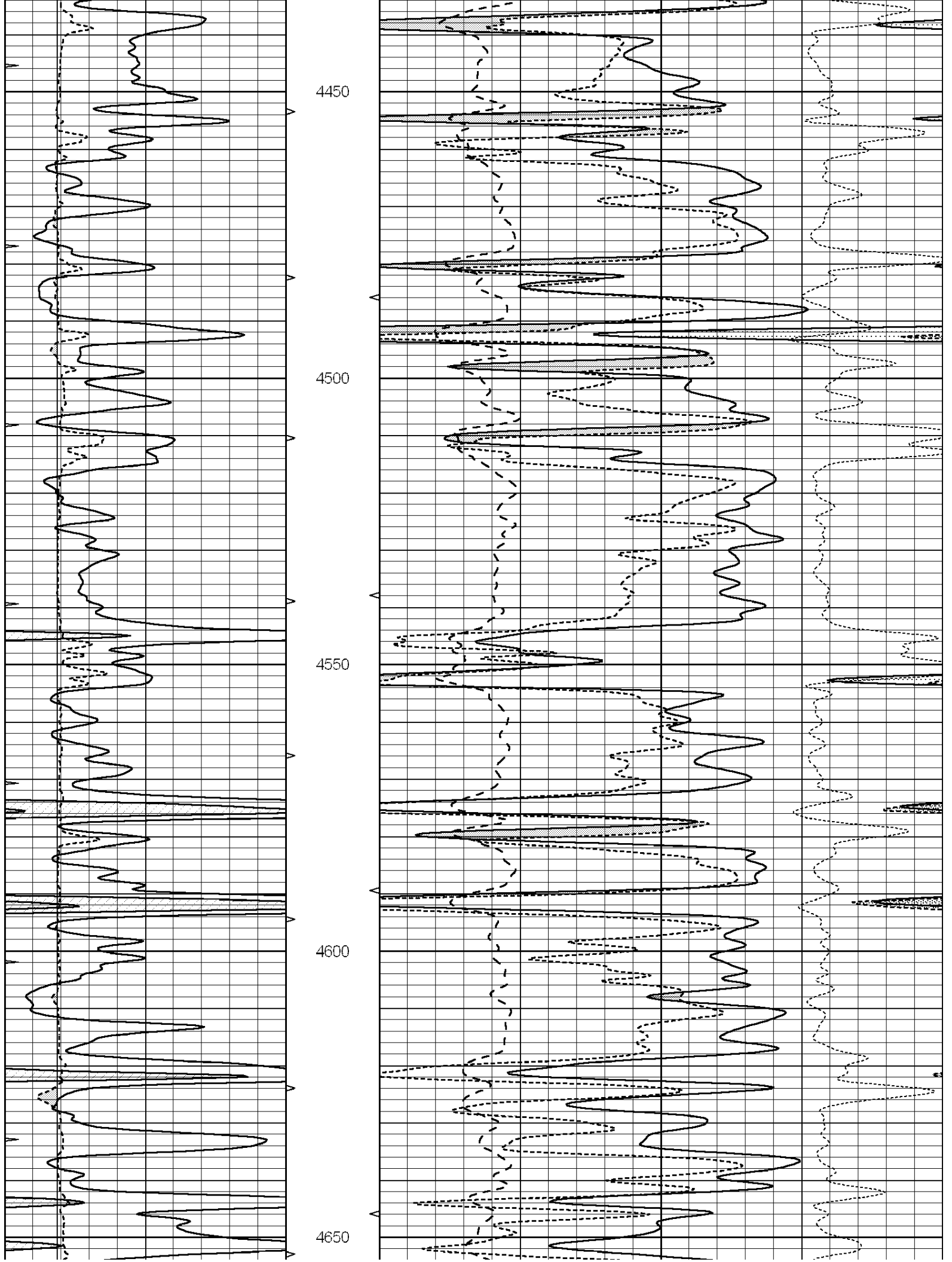
0	GAMMA RAY (GAPI)	150	ABHV	30	COMPENSATED DENSITY (pu)		-10
6	CALIPER (in)	16	10 (ft3)	0	COMPENSATED NEUTRON (pu)		-10
0	MINMK	20	TBHV	0	PE	10	-0.25 CORRECTION (g/cc) 0.25
			0 (ft3)	10			

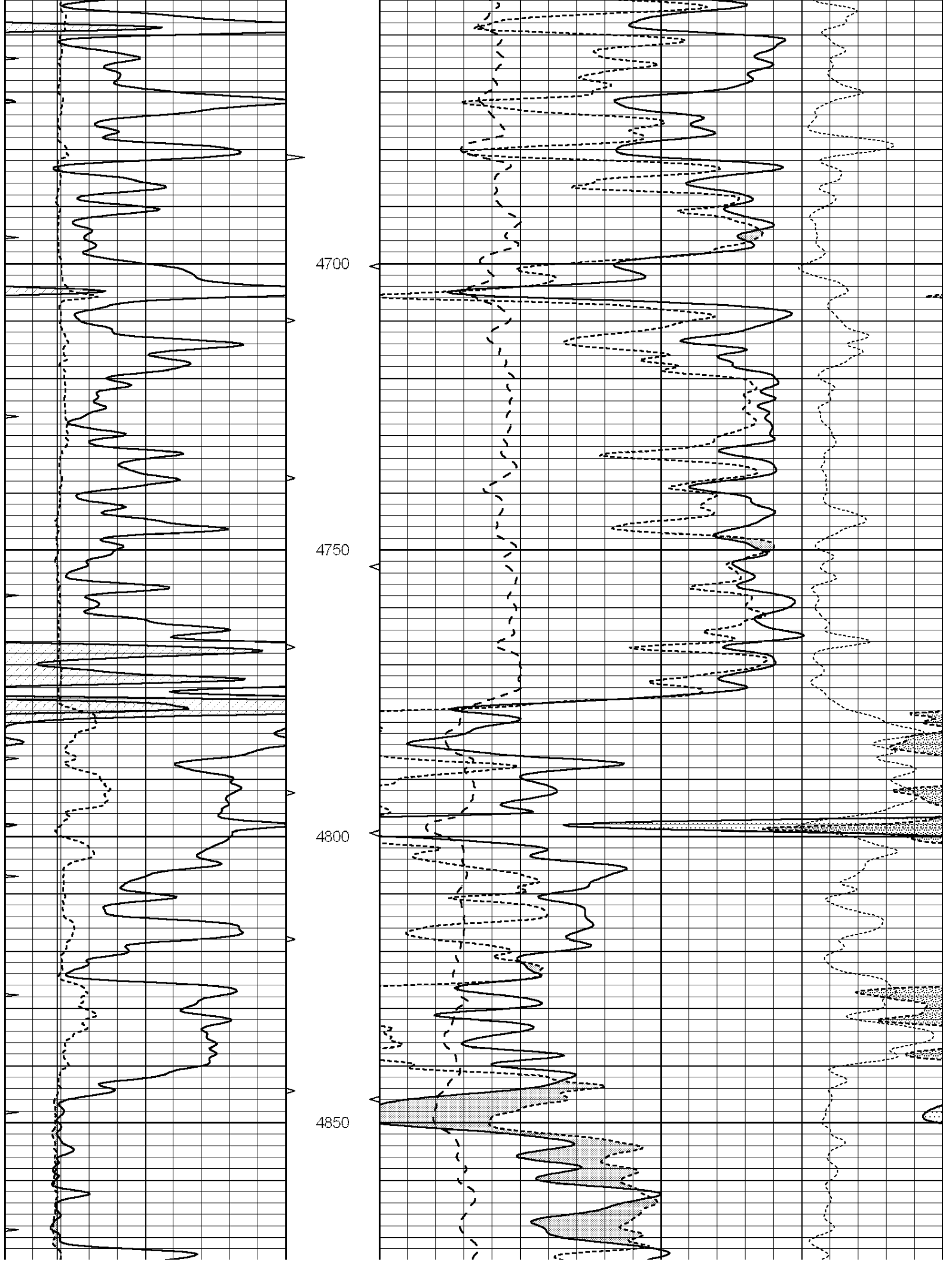


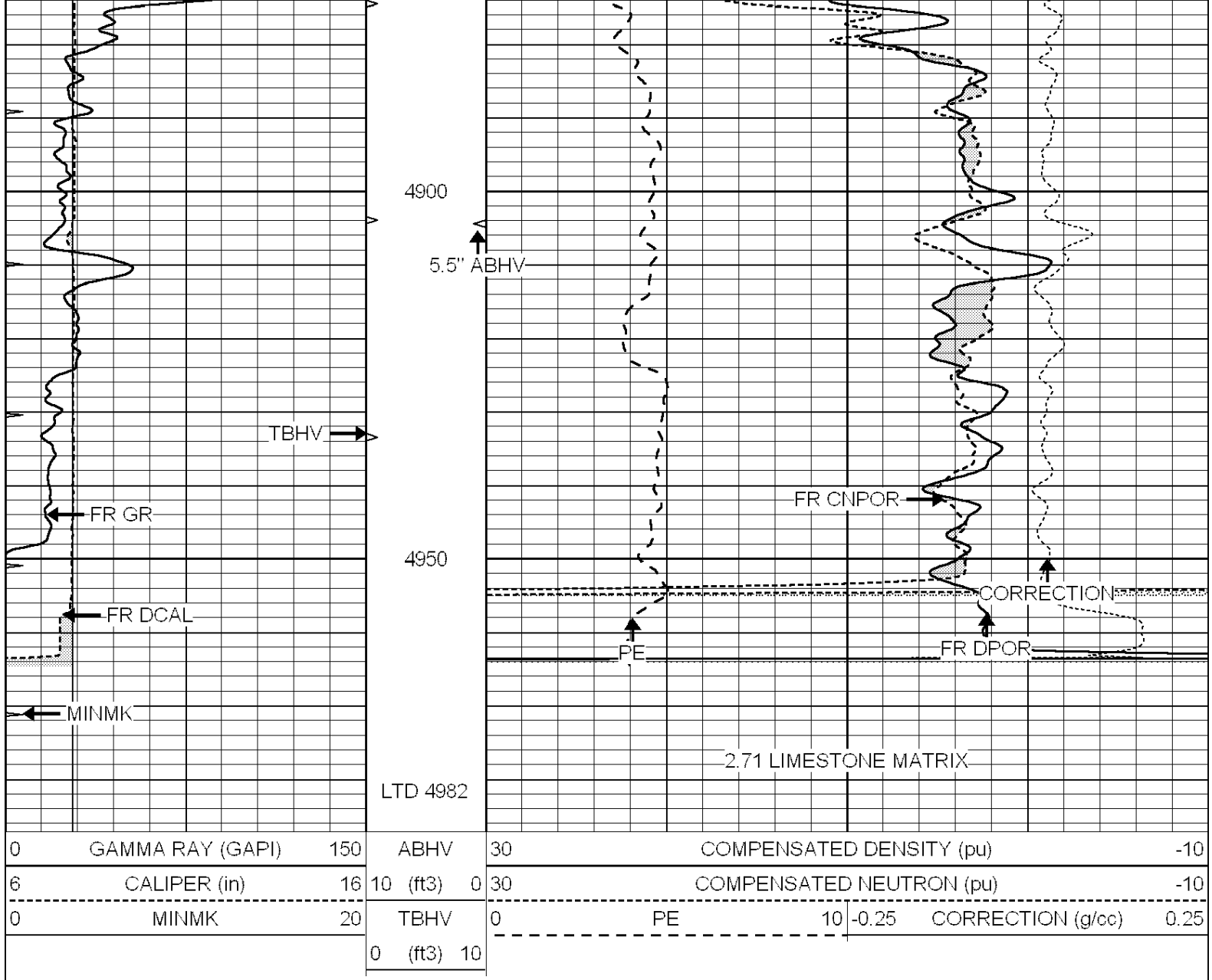










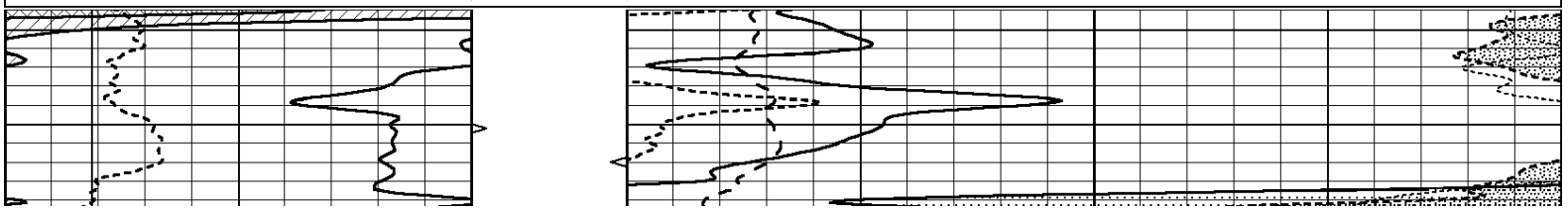


**COMPLETION  
& PRODUCTION  
SERVICES CO.**

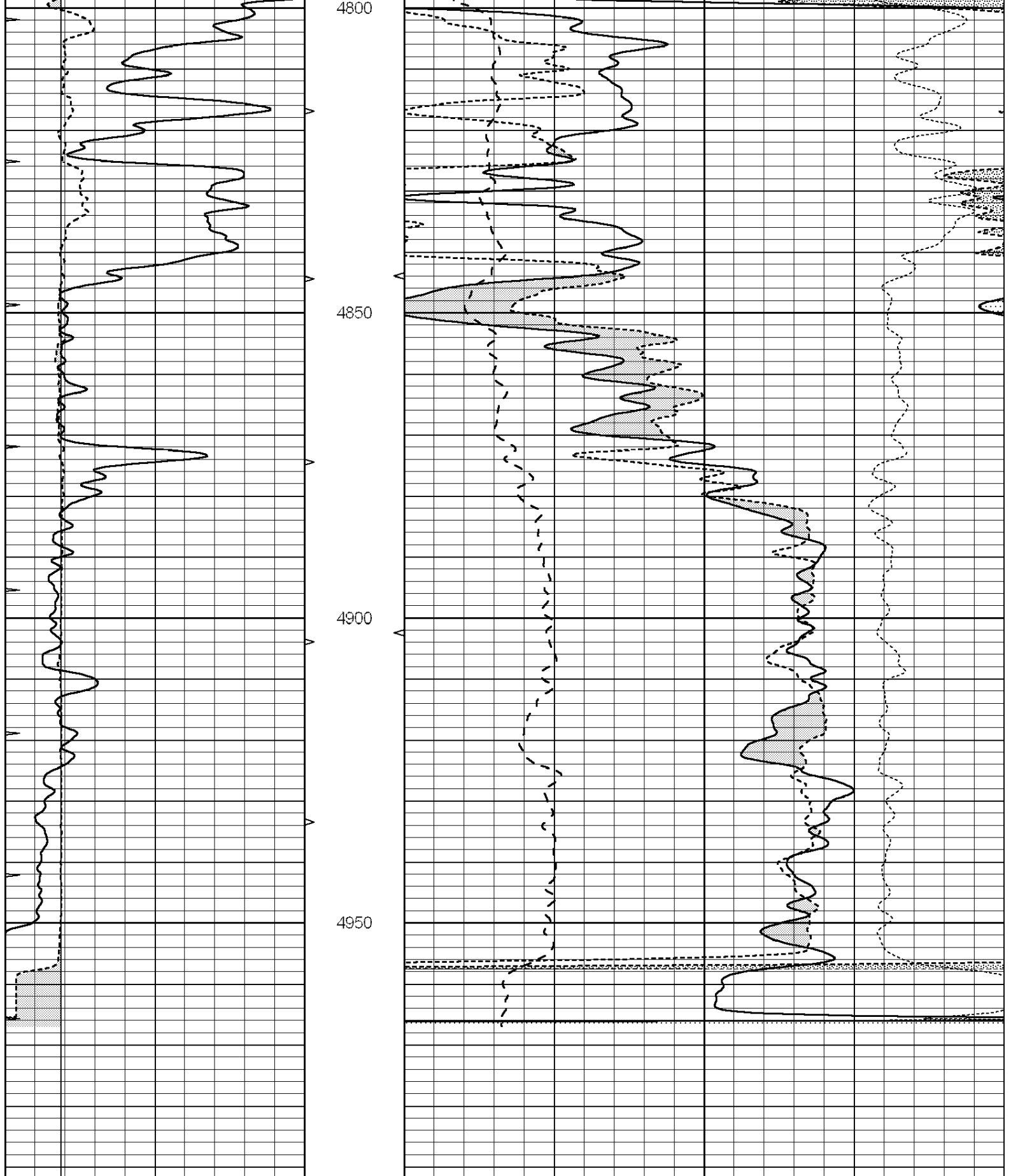
# REPEAT SECTION

Database File: 010012pe.db  
 Dataset Pathname: pass2.5  
 Presentation Format: ldt\_neu  
 Dataset Creation: Wed Nov 14 08:31:25 2012  
 Charted by: Depth in Feet scaled 1:240

0	GAMMA RAY (GAPI)	150	ABHV	30	COMPENSATED DENSITY (pu)	-10			
6	CALIPER (in)	16	10 (ft3)	0	30	COMPENSATED NEUTRON (pu)	-10		
0	MINMK	20	TBHV	0	PE	10	-0.25	CORRECTION (g/cc)	0.25
			0 (ft3)	10					







0	GAMMA RAY (GAPI)	150	ABHV	30	COMPENSATED DENSITY (pu)	-10			
6	CALIPER (in)	16	10 (ft3)	0	30	COMPENSATED NEUTRON (pu)	-10		
0	MINMK	20	TBHV	0	PE	10	-0.25	CORRECTION (g/cc)	0.25
			0 (ft3)	10					

Calibration Report

Database File: 010012pe.db  
 Dataset Pathname: pass3.8  
 Dataset Creation: Wed Nov 14 09:03:16 2012 by Calc SOC 120430

Dual Induction Calibration Report

Serial-Model: DIL3-GEAR  
 Performed: Sun Nov 11 00:57:13 2012

Loop:	Readings			References			Results	
	Air	Loop		Air	Loop		m	b
Deep	0.011	0.656	V	0.000	400.000	mmho/m	640.000	7.000
Medium	0.013	0.740	V	0.000	462.500	mmho/m	700.000	-11.000
Internal:	Zero	Cal		Zero	Cal		m	b
Deep	0.002	0.645	V	0.000	400.000	mmho/m	622.059	-1.071
Medium	0.007	0.740	V	0.000	462.500	mmho/m	631.393	-4.555

Litho Density Calibration Report  
 Serial: 006 Model: PRB  
 Performed Sun Aug 15 09:48:41 2010

Litho Density Calibration

	Background	Magnesium	Aluminum	Sandstone	
Window 1	1686.6	11612.8	3932.0	12718.8	cps
Window 2	1531.4	9204.7	3267.8	9851.9	cps
Window 3	1198.3	4733.6	1952.5	4920.6	cps
Window 4	317.3	321.2	325.9	303.6	cps
Long Space	0.0	7673.3	1736.4	8320.4	cps
Short Space	1.7	2548.5	1657.2	2628.8	cps
Rho		1.7100	2.5900	1.3800	g/cc
Pe			2.5700	1.5500	
Rib Angle	: 43.8	Rib Slope	: 0.961	Density/Spine Ratio	: 0.569
Spine Angle	: 73.8	Spine Slope	: 3.453	Spine Intercept	: -18.1

Caliper

	Readings	Reference	
Low Ref	3.5	6.5	
High Ref	5.5	15.0	
Gain:	4.4		Offset: -9.1

Compensated Neutron Calibration Report

Serial Number: 070808  
 Tool Model: Probe

PRE-SURVEY VERIFICATION

Detector	Readings	Measured	Target
Short Space	cps		
Long Space	cps	pu	pu

POST-SURVEY VERIFICATION

Detector	Readings	Measured	Target
Short Space	cps		
Long Space	cps	pu	pu

Gamma Ray Calibration Report

Serial Number: 070559  
Tool Model: OPEN\_GR  
Performed: Wed Sep 19 15:58:00 2012

Calibrator Value: 1.0 GAPI

Background Reading: 0.0 cps  
Calibrator Reading: 1.0 cps

Sensitivity: 0.3000 GAPI/cps