



**MIDWEST SURVEYS**  
 LOGGING - PERFORATING - CONSULTING SERVICES  
 P.O. Box 68, Osawatomie, KS 66064  
 913 / 755 - 2128

**GAMMA RAY / NEUTRON / CCL**

File No.

API # 15-207-28,387

Company **Haas Petroleum, LLC.**

Well **McColt No. 7-HP**

Field **Winterscheid**

County **Woodson** State **Kansas**

Location **300' FSL & 300' FEL  
SE-SE-SE-SE** Other Services  
**Perforate**

Sec. **35** Twp. **23s** Rge. **14e** Elevation  
 Permanent Datum **GL** Elevation **1110'** K.B. **1117'**  
 Log Measured From **GL** D.F. **NA**  
 Drilling Measured From **KB 7' From GL** G.L. **1110'**

Date	01-07-2013
Run Number	One
Depth Driller	1670.0
Depth Logger	1651.7
Bottom Logged Interval	1650.7
Top Log Interval	200.0
Fluid Level	Full
Type Fluid	Water
Density / Viscosity	NA
Salinity - PPM Cl	NA
Max Recorded Temp	NA
Estimated Cement Top	0.0
Equipment No.	102
Location	Osawatomie
Recorded By	Steve Windisch
Witnessed By	Mark Haas

RUN		BORE-HOLE RECORD				CASING RECORD	
No.	BIT	FROM	TO	SIZE	WGT.	FROM	TO
One	12.25"	0.0	40.0	8.625"	20.0 #	0.0	40.0
Two	6.75"	40.0	1670.0	4.50"	10.5 #	0.0	1654.0

<<< Fold Here >>>

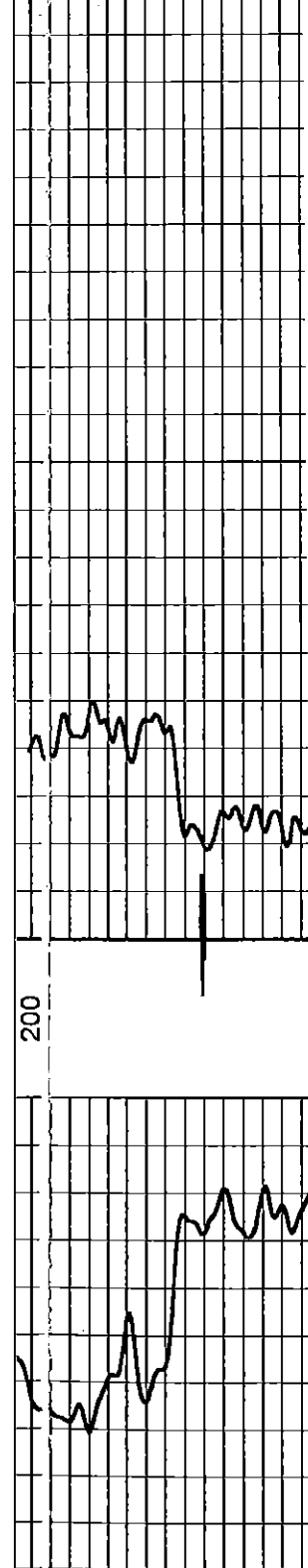
All interpretations are opinions based on inferences from electrical or other measurements and we cannot and do not guarantee the accuracy or correctness of any interpretation, and we shall not, except in the case of gross or willful negligence on our part, be liable or responsible for any loss, costs, damages, or expenses incurred or sustained by anyone resulting from any interpretation made by any of our officers, agents or employees. These interpretations are also subject to our general terms and conditions set out in our current Price Schedule.

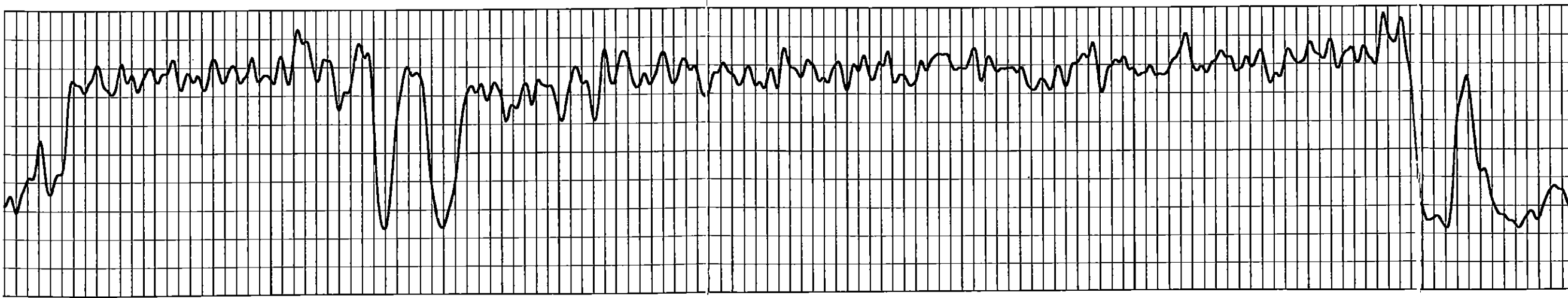
**Comments**

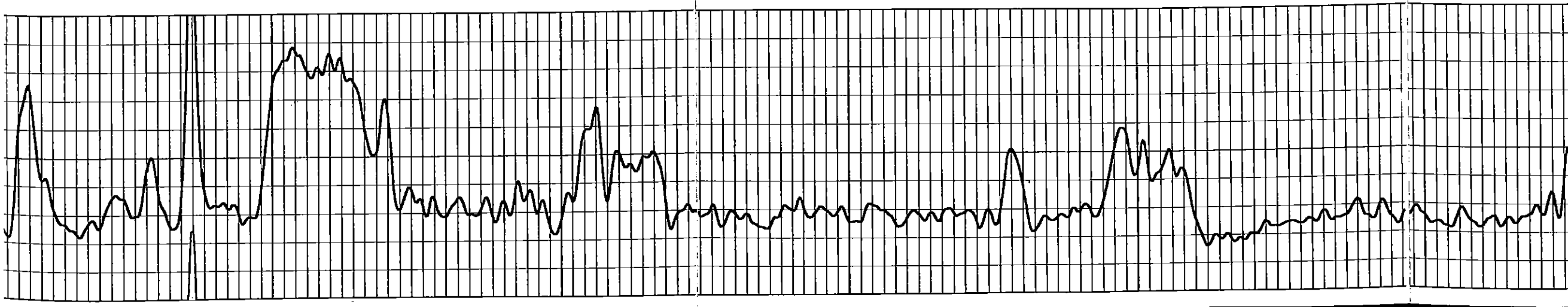
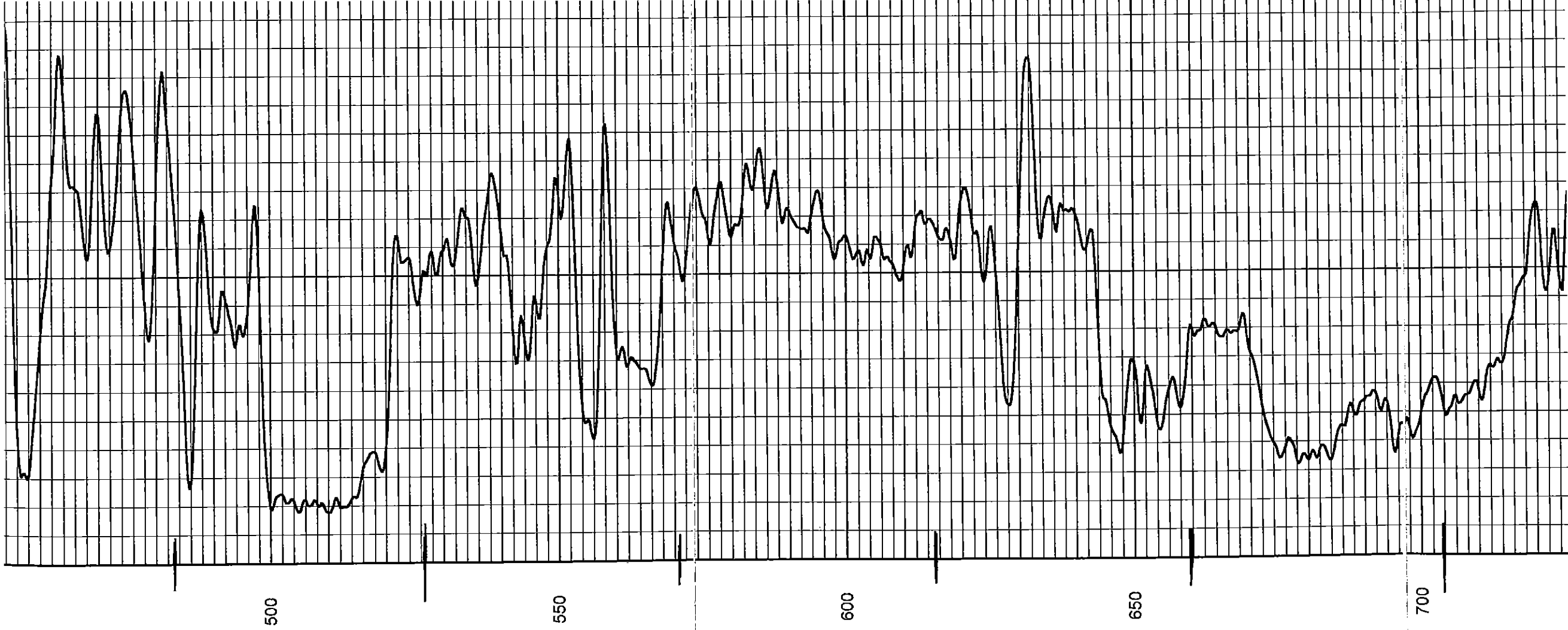
Drilling Contractor :  
 Sky Drilling Rig -3

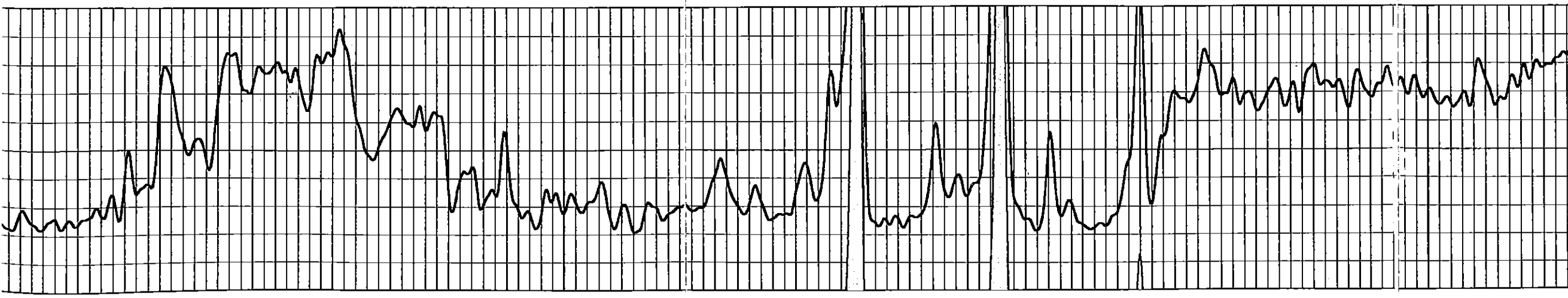
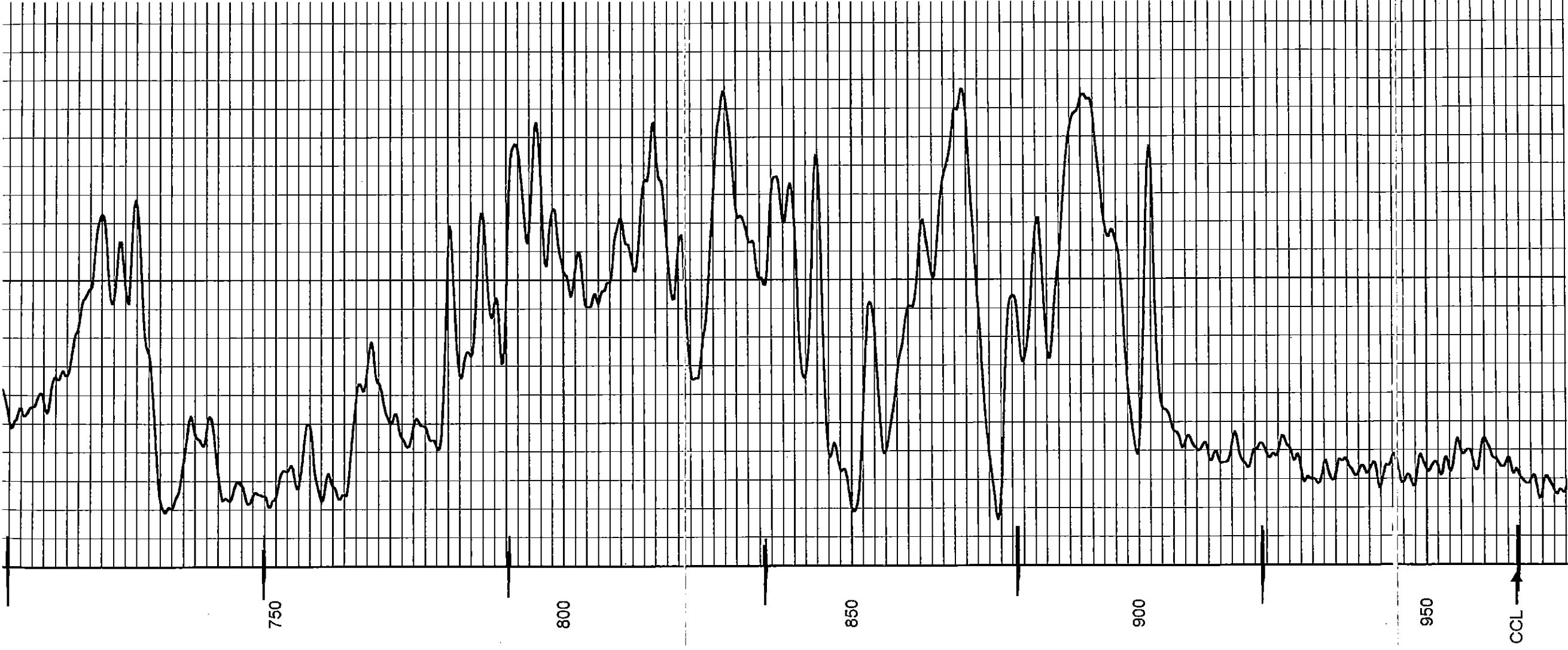
Database File: mcolt7.db  
 Dataset Pathname: pass1  
 Presentation Format: gr-n-ccl  
 Dataset Creation: Mon Jan 07 10:40:34 2013 by Log SCH 111116  
 Charted by: Depth in Feet scaled 1:240

0	Gamma Ray (cps)	150	Neutron (cps)	190C
150	Gamma Ray (cps)	300		









750

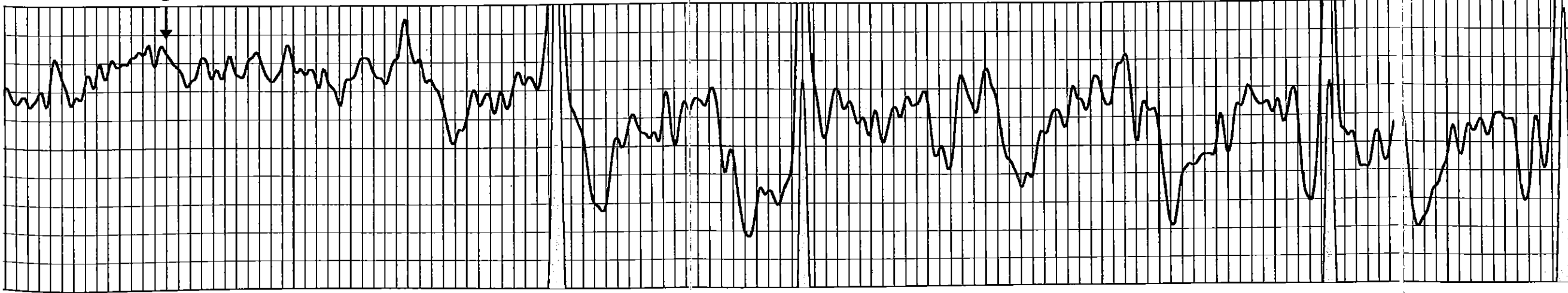
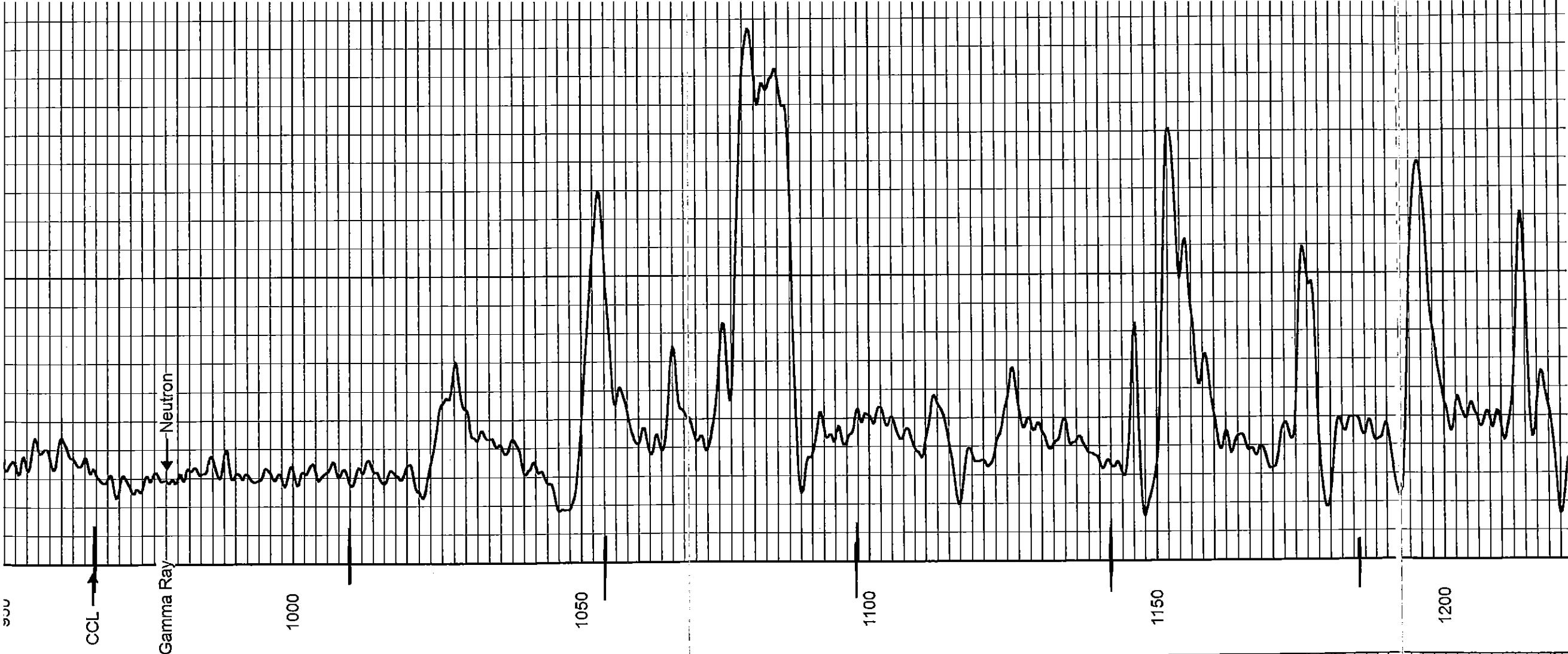
800

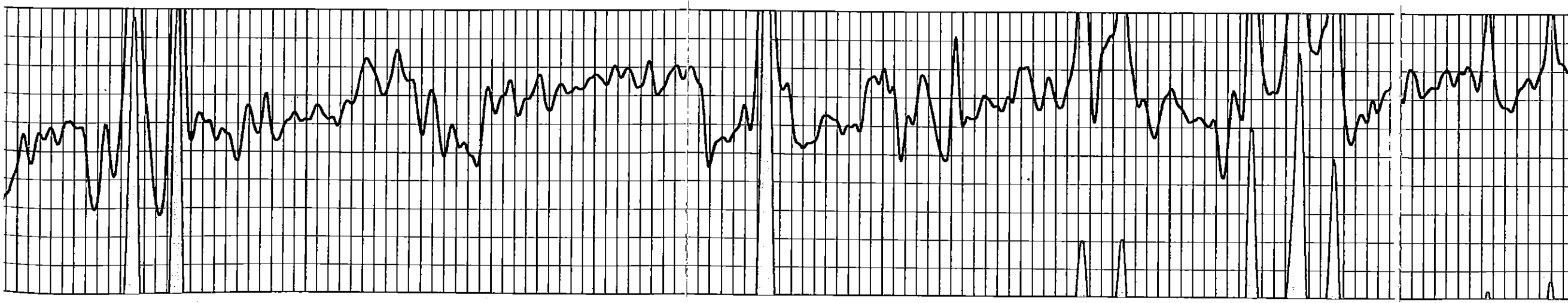
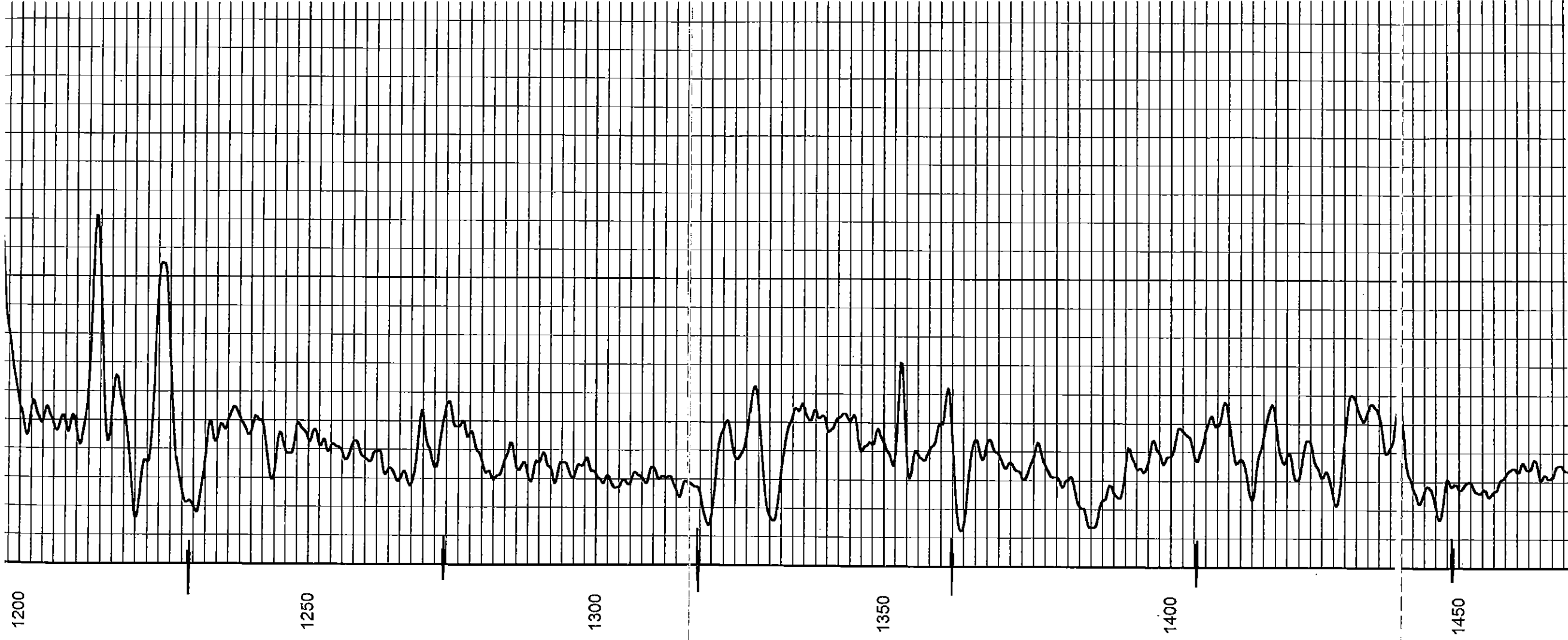
850

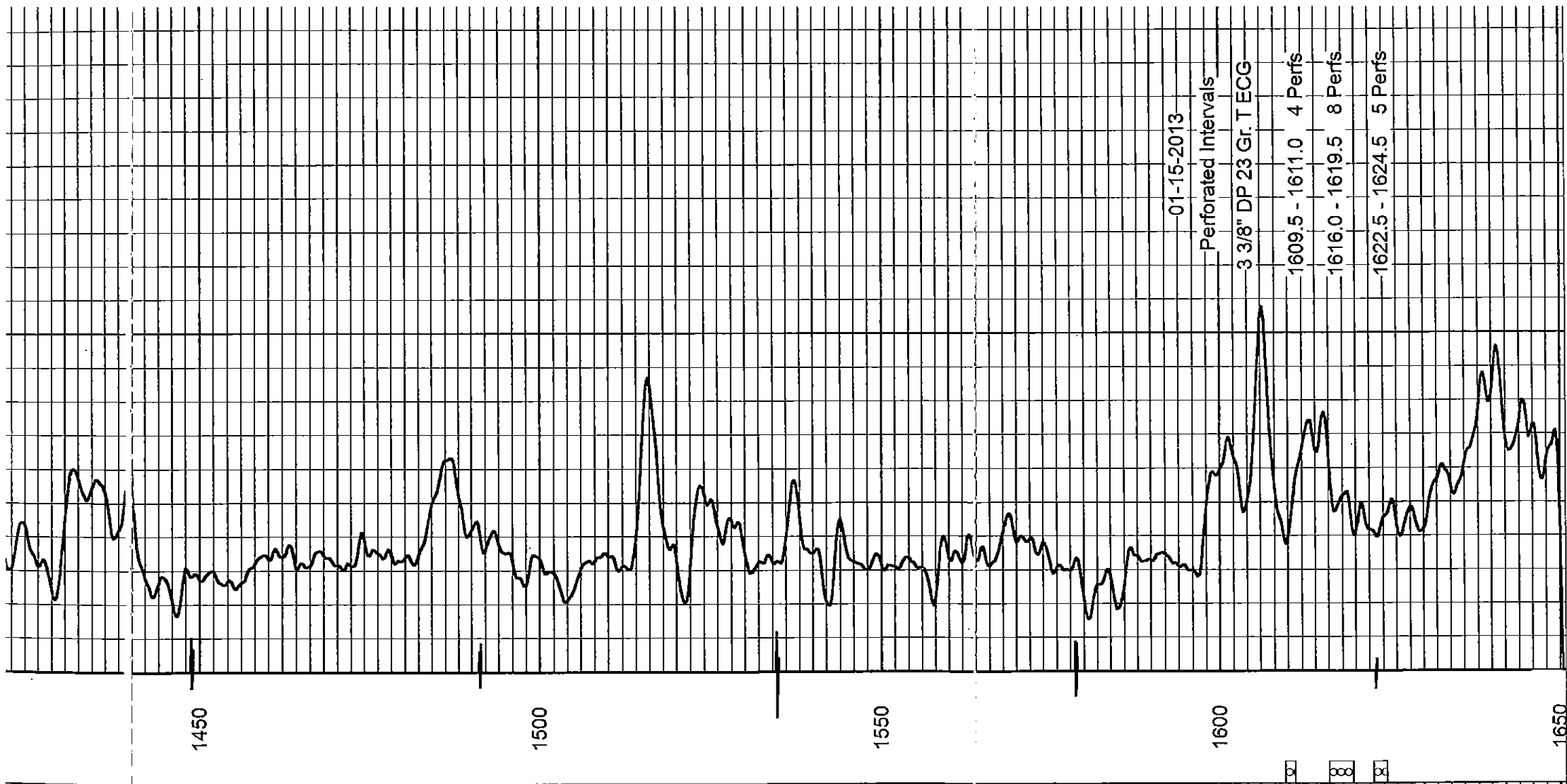
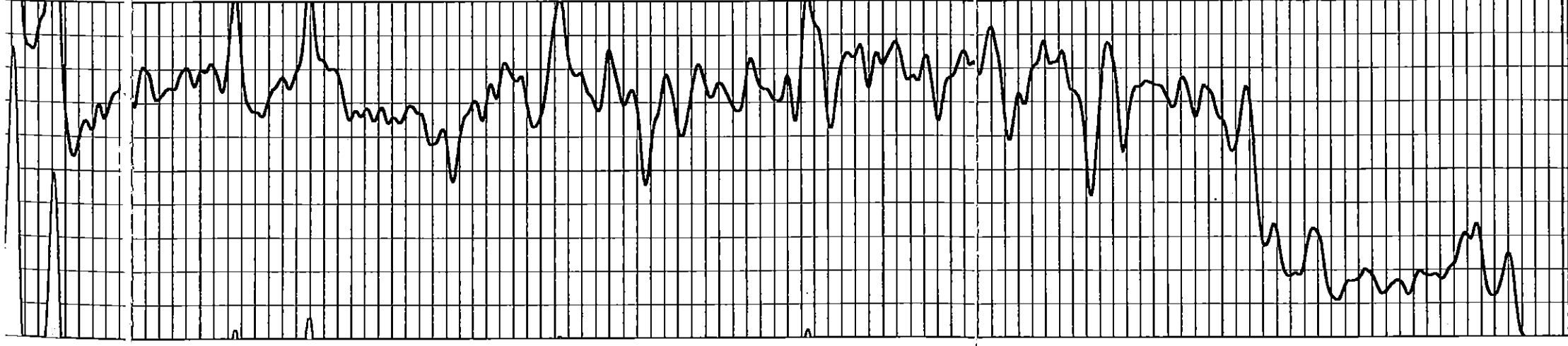
900

950

CCL







1450

1500

1550

1600

1650

01-15-2013

Perforated Intervals

3 3/8" DP 23 Gr. T ECG

□

□

□

1609.5 - 1611.0 4 Perfs

1616.0 - 1619.5 8 Perfs

1622.5 - 1624.5 5 Perfs