



**COMPLETION
& PRODUCTION
SERVICES CO.**

**COMPENSATED
DENSITY / NEUTRON
LOG**

Company CHARTER ENERGY, INC.
Well PRIEFERT TRUST #1
Field WILDCAT
County GOVE
State KANSAS

Company CHARTER ENERGY, INC.
Well PRIEFERT TRUST #1
Field WILDCAT
County GOVE State KANSAS

Location: API # : 15-063-22090-0000
553' FSL & 1304' FWL
SW - NW - NE - SE
SEC 21 TWP 13S RGE 29W
Permanent Datum GROUND LEVEL Elevation 2830
Log Measured From KELLY BUSHING 7' A.G.L.
Drilling Measured From KELLY BUSHING
Other Services
DIL
MEL/SON
Elevation
K.B. 2837
D.F. 2835
G.L. 2830

Date	3/6/13		
Run Number	ONE		
Depth Driller	4650		
Depth Logger	4651		
Bottom Logged Interval	4637		
Top Log Interval	3700		
Casing Driller	8 5/8" @ 233		
Casing Logger	230		
Bit Size	7 7/8"		
Type Fluid in Hole	CHEMICAL MUD	CHLORIDES 2500 PPM	
Density / Viscosity	9.5/57		
pH / Fluid Loss	9.0/7.0		
Source of Sample	FLOWLINE		
Rm @ Meas. Temp	.80 @ 66F		
Rmt @ Meas. Temp	.60 @ 66F		
Rmc @ Meas. Temp	.96 @ 66F		
Source of Rmf / Rmc	MEASUREMENT		
Rm @ BHT	.43 @ 122F		
Time Circulation Stopped	2 HOURS		
Time Logger on Bottom			
Maximum Recorded Temperature	122F		
Equipment Number	4010		
Location	HAYS, KANSAS		
Recorded By	JASON CAPPELLUCCI		
Witnessed By	KURT TALBOTT		

<<< Fold Here >>>

All interpretations are opinions based on inferences from electrical or other measurements and we cannot and do not guarantee the accuracy or correctness of any interpretation, and we shall not, except in the case of gross or willful negligence on our part, be liable or responsible for any loss, costs, damages, or expenses incurred or sustained by anyone resulting from any interpretation made by any of our officers, agents or employees. These interpretations are also subject to our general terms and conditions set out in our current Price Schedule.

Comments

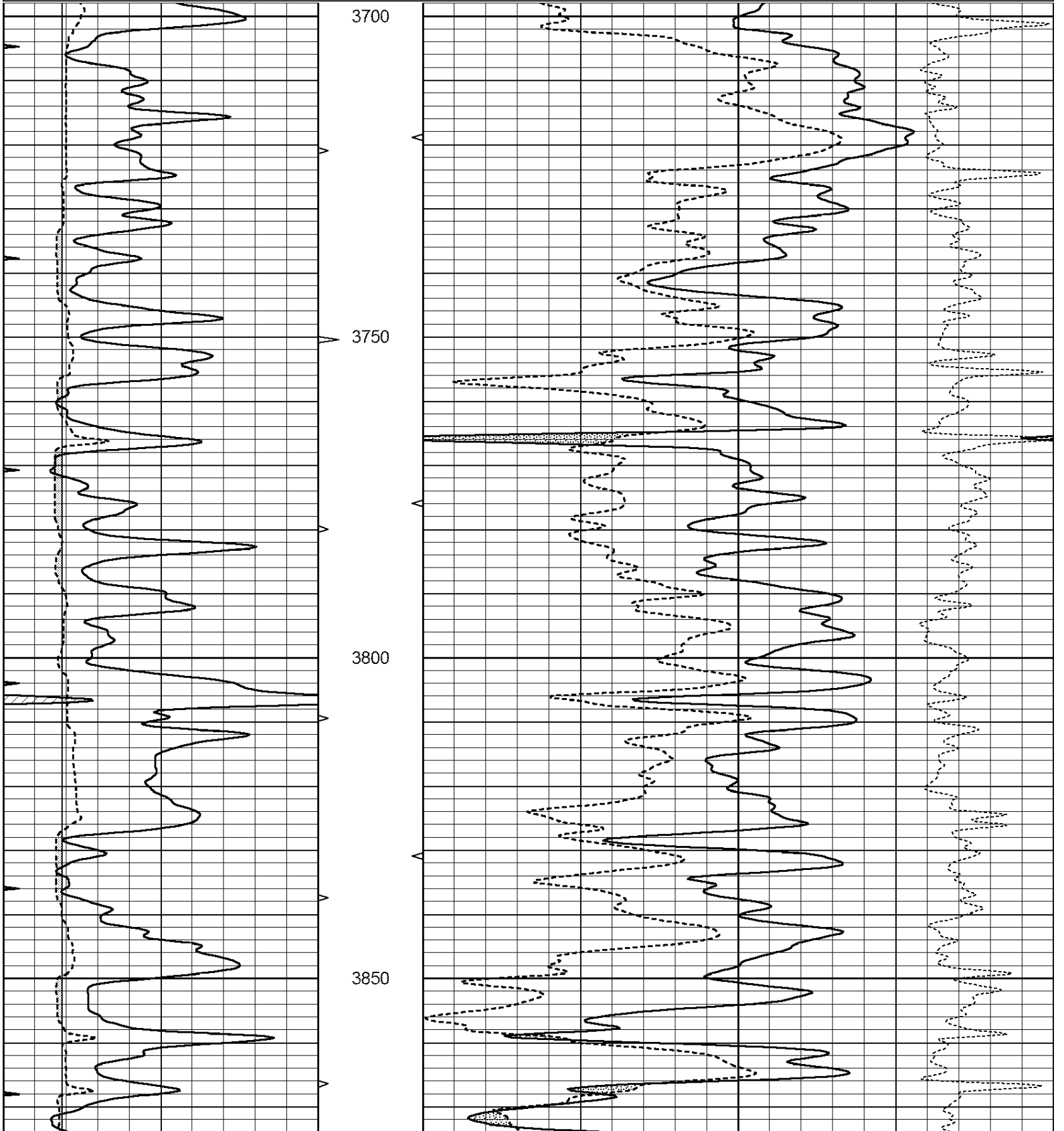
THANK YOU FOR USING NABORS HAYS, KANSAS (785) 628-6395
DIRECTIONS
GOVE, KS. - 4 S. TO RD. 0 - 2 1/2 W. - 1 MILE N. INTO

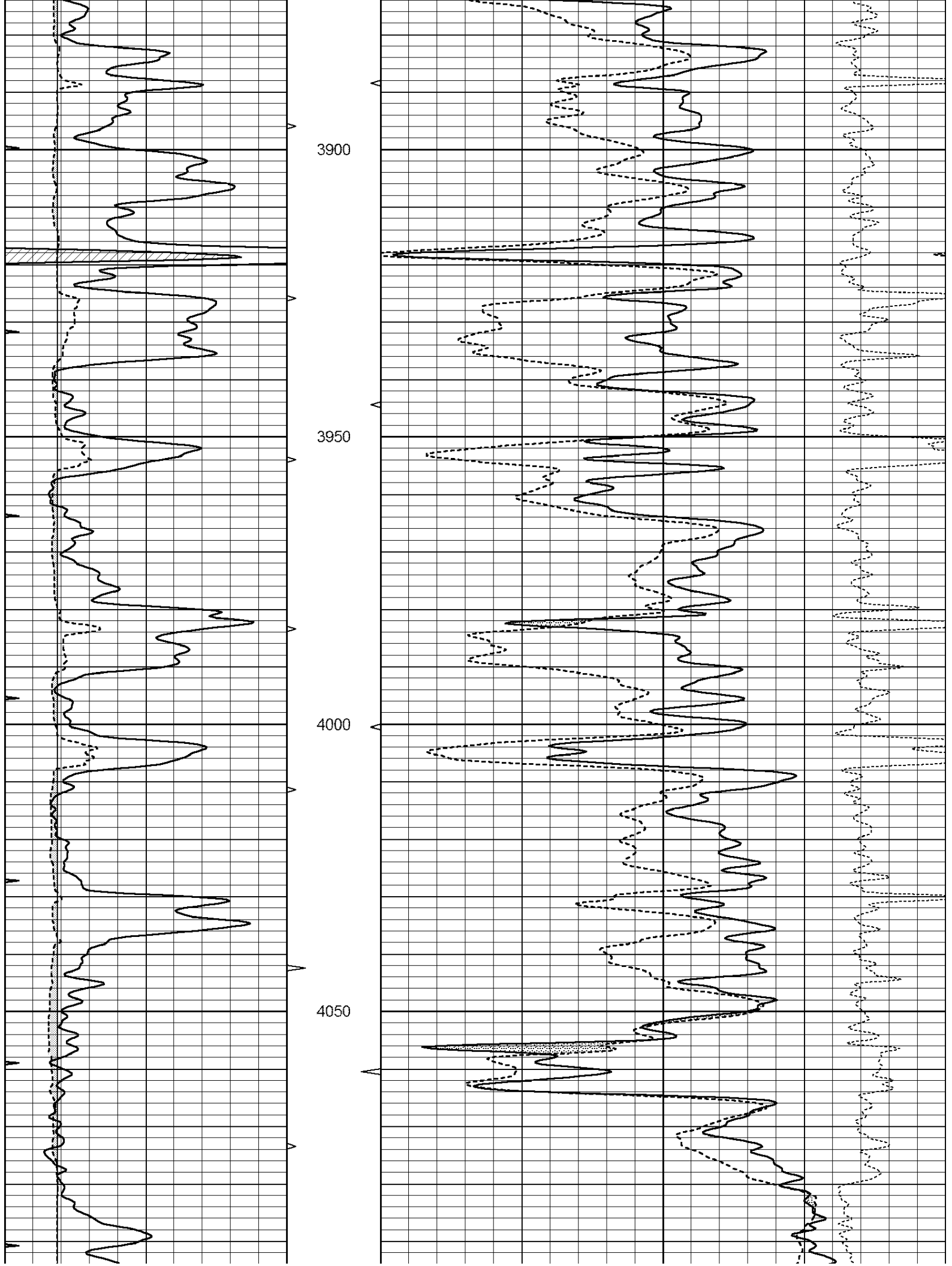


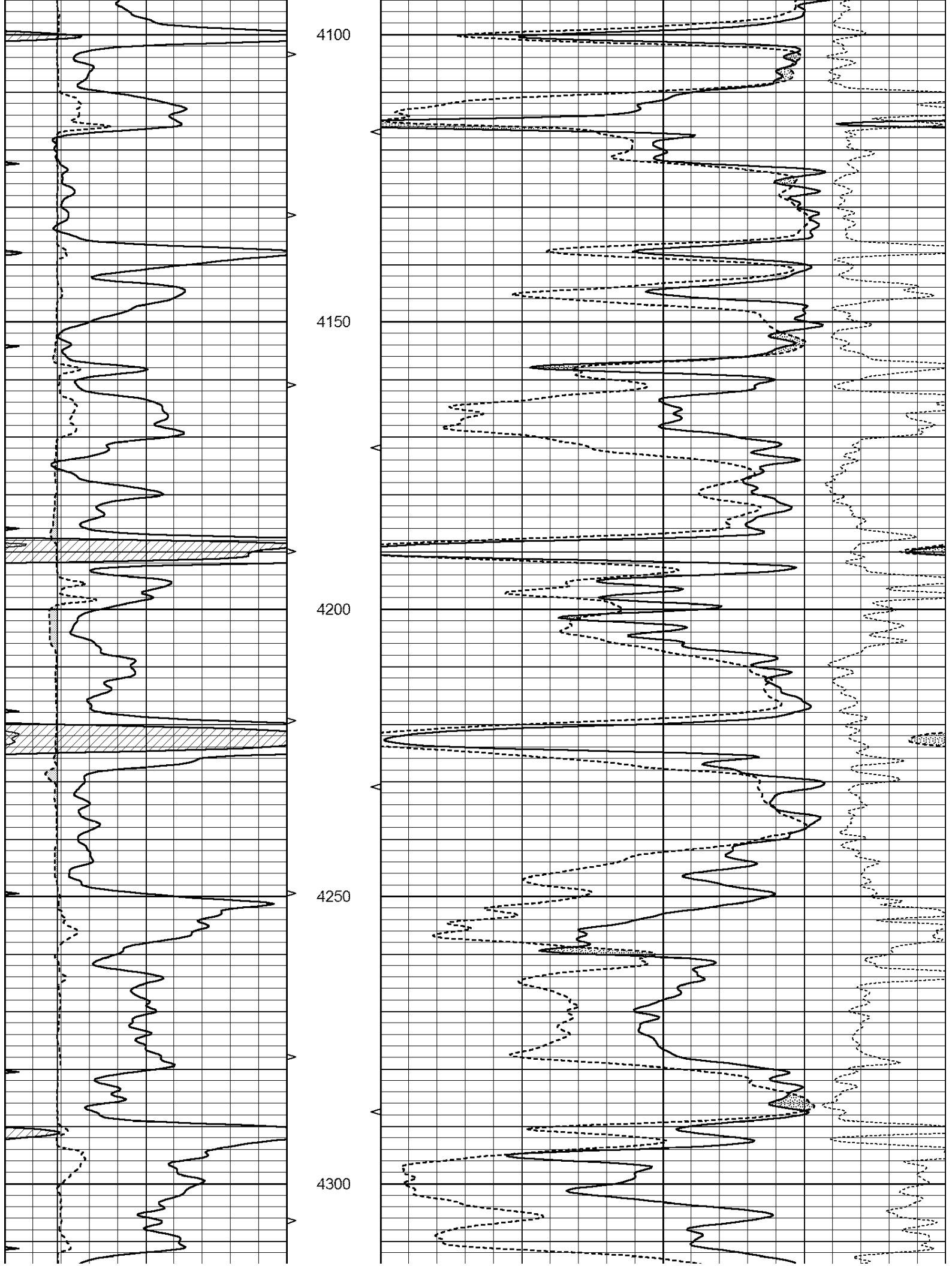
MAIN SECTION

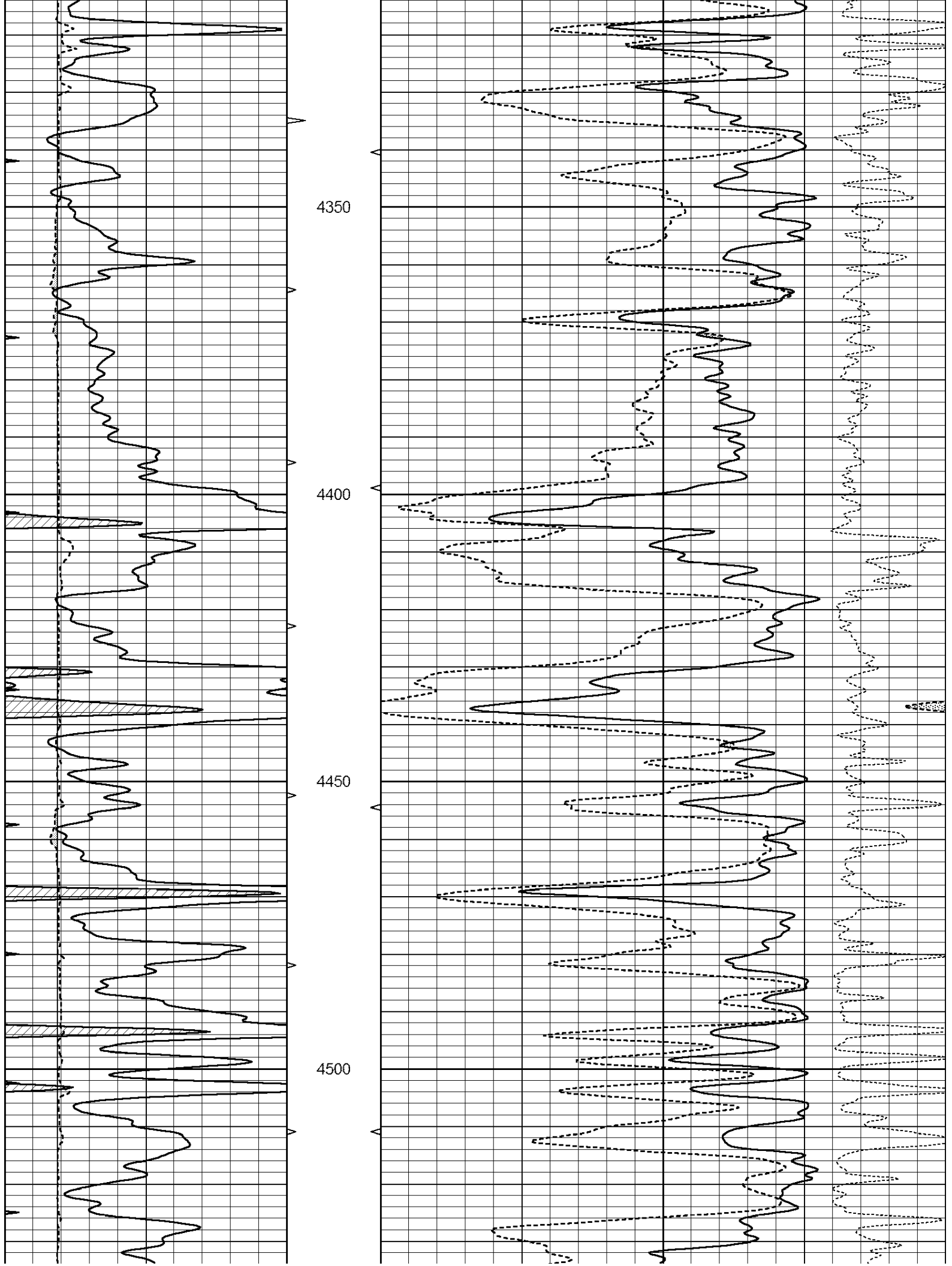
Database File: 010854ddn.db
 Dataset Pathname: pass3.4
 Presentation Format: den_neu
 Dataset Creation: Wed Mar 06 18:10:20 2013 by Calc Open-Cased 090629
 Charted by: Depth in Feet scaled 1:240

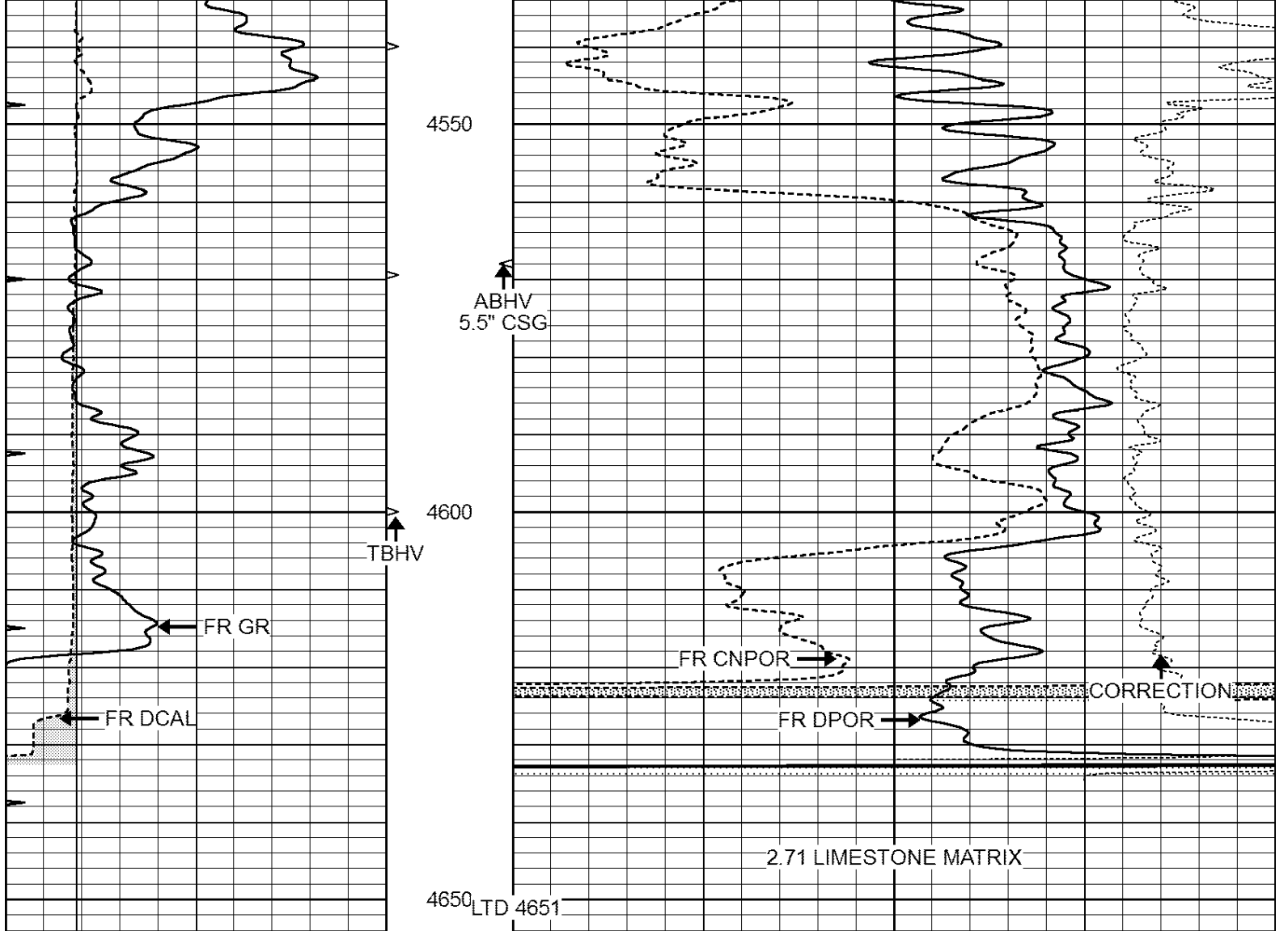
0	GAMMA RAY (GAPI)	150	ABHV	30	COMPENSATED DENSITY (pu)	-10
6	CALIPER (in)	16	10 (ft3)	0 30	COMPENSATED NEUTRON (pu)	-10
0	MINMK	20	TBHV		-0.25 CORRECTION (g/cc)	0.25
			0 (ft3)	10		











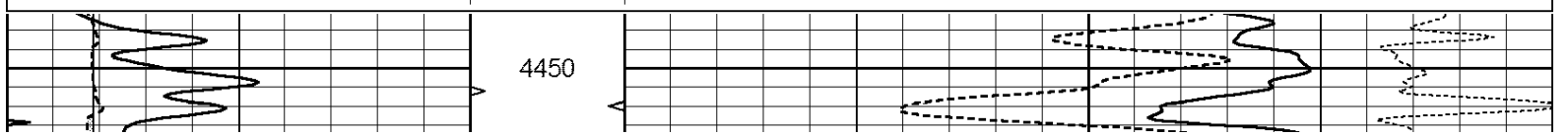
0	GAMMA RAY (GAPI)	150	ABHV	30	COMPENSATED DENSITY (pu)	-10
6	CALIPER (in)	16	10 (ft3)	0 30	COMPENSATED NEUTRON (pu)	-10
0	MINMK	20	TBHV		-0.25 CORRECTION (g/cc)	0.25
			0 (ft3)	10		

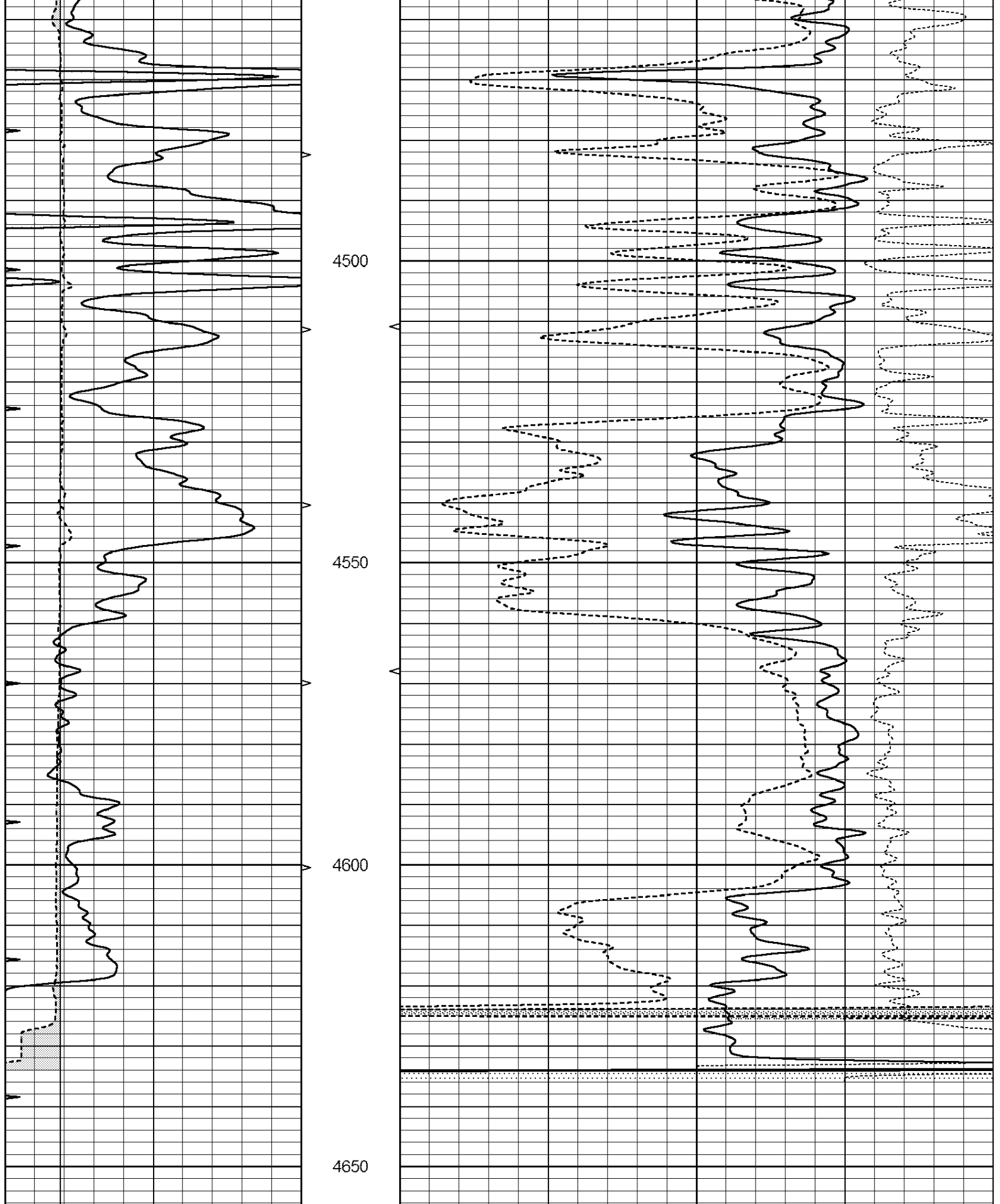


REPEAT SECTION

Database File: 010854ddn.db
 Dataset Pathname: pass2.2
 Presentation Format: den_neu
 Dataset Creation: Wed Mar 06 18:21:52 2013 by Calc Open-Cased 090629
 Charted by: Depth in Feet scaled 1:240

0	GAMMA RAY (GAPI)	150	ABHV	30	COMPENSATED DENSITY (pu)	-10
6	CALIPER (in)	16	10 (ft3)	0 30	COMPENSATED NEUTRON (pu)	-10
0	MINMK	20	TBHV		-0.25 CORRECTION (g/cc)	0.25
			0 (ft3)	10		





0	GAMMA RAY (GAPI)	150	ABHV	30	COMPENSATED DENSITY (pu)	-10	
6	CALIPER (in)	16	10 (ft3)	0 30	COMPENSATED NEUTRON (pu)	-10	
0	MINMK	20	TBHV		-0.25	CORRECTION (g/cc)	0.25
			0 (ft3)	10			

Calibration Report

Database File: 010854ddn.db
 Dataset Pathname: pass2.2
 Dataset Creation: Wed Mar 06 18:21:52 2013 by Calc Open-Cased 090629

Dual Induction Calibration Report

Serial-Model: PROBE8-DILG
 Surface Cal Performed: Fri Aug 01 06:33:19 2008
 Downhole Cal Performed: Mon Jul 28 11:08:27 2008
 After Survey Verification Performed: Mon Jul 28 11:08:27 2008

Surface Calibration

Loop:	Readings			References			Results	
	Air	Loop		Air	Loop		m	b
Deep	0.015	0.648	V	0.000	400.000	mmho/m	632.616	-9.730
Medium	0.029	0.796	V	0.000	464.000	mmho/m	605.049	-17.680
Internal:	Zero	Cal		Zero	Cal		m	b
Deep	0.017	0.657	V	0.000	400.000	mmho/m	625.153	-10.619
Medium	0.016	0.757	V	0.000	464.000	mmho/m	625.992	-9.739

Downhole Calibration

	Readings			References			Results	
	Zero	Cal		Zero	Cal		m'	b'
Deep	0.000	0.000	mmho/m	2.011	405.777	mmho/m	1.000	0.000
Medium	0.000	0.000	mmho/m	7.590	503.393	mmho/m	1.000	0.000
LL3		7.500	V		1500.000	Ohm-m		
		0.000	V		20.000	Ohm-m		
		-7.200	V		3800.000	mmho-m		

After Survey Verification

	Readings			Targets			Results	
	Zero	Cal		Zero	Cal		m'	b'
Deep	0.000	0.000	mmho/m	0.000	0.000	mmho/m	0.000	0.000
Medium	0.000	0.000	mmho/m	0.000	0.000	mmho/m	0.000	0.000
LL3		1.000	Ohm-m		1.000	Ohm-m		
		0.000	Ohm-m		0.000	Ohm-m		
		1.000	mmho-m		1.000	mmho-m		

Compensated Density Calibration Report

Serial-Model: GEAR3-GEARHART
 Source / Verifier: 143 / 143
 Master Calibration Performed: Fri Jan 04 15:48:16 2013
 Before Survey Verification Performed:
 After Survey Verification Performed:

Master Calibration

	Density		Far Detector	Near Detector	
Magnesium	1.710	g/cc	935.36	501.55	cps
Aluminum	2.580	g/cc	209.32	357.01	cps
Spine Angle = 77.21			Density/Spine Ratio = 0.567		
	Size		Reading		
Small Ring	8.00	in	4.29	V	

Before Survey Verification

<u>Target</u>	<u>Measured</u>
g/cc	g/cc
g/cc	g/cc
g/cc	g/cc

After Survey Verification

<u>Target</u>	<u>Measured</u>
g/cc	g/cc
g/cc	g/cc
g/cc	g/cc

Compensated Neutron Calibration Report

Serial Number: 61
Tool Model: G

CALIBRATION

Detector	Readings	Target	Normalization
Short Space	1.00 cps	1.00 cps	1.0000
Long Space	1.00 cps	1.00 cps	1.0000

PRE-SURVEY VERIFICATION

	Detector	Readings	Measured	Target
1)	Short Space	cps		
	Long Space	cps	pu	pu
2)	Short Space	cps		
	Long Space	cps	pu	
3)	Short Space	cps		
	Long Space	cps	pu	

POST-SURVEY VERIFICATION

	Detector	Readings	Measured	Target
1)	Short Space	cps		
	Long Space	cps	pu	pu
2)	Short Space	cps		
	Long Space	cps	pu	pu
3)	Short Space	cps		
	Long Space	cps	pu	pu

Gamma Ray Calibration Report

Serial Number: #8
Tool Model: OPEN
Performed: Mon Jun 13 16:56:43 2011

Calibrator Value: 150.0 GAPI

Background Reading: 0.0 cps
Calibrator Reading: 175.0 cps

Sensitivity: 0.8371 GAPI/cps