



**COMPLETION
& PRODUCTION
SERVICES CO.**

**SONIC
LOG**

Company CHARTER ENERGY, INC.
Well PRIEFERT TRUST #1
Field WILDCAT
County GOVE
State KANSAS

Company CHARTER ENERGY, INC.
Well PRIEFERT TRUST #1
Field WILDCAT
County GOVE State KANSAS

Location: API # : 15-063-22090-0000
553' FSL & 1304' FWL
SW - NW - NE - SE
SEC 21 TWP 13S RGE 29W
Permanent Datum GROUND LEVEL Elevation 2830
Log Measured From KELLY BUSHING 7' A.G.L.
Drilling Measured From KELLY BUSHING
Other Services
CDL/CNL
DIL/MEL
Elevation
K.B. 2837
D.F. 2835
G.L. 2830

Date	3/6/13		
Run Number	TWO		
Depth Driller	4650		
Depth Logger	4651		
Bottom Logged Interval	4641		
Top Log Interval	200		
Casing Driller	8 5/8" @ 233		
Casing Logger	230		
Bit Size	7 7/8"		
Type Fluid in Hole	CHEMICAL MUD	CHLORIDES 2500 PPM	
Density / Viscosity	9.5/57		
pH / Fluid Loss	9.07/ 0		
Source of Sample	FLOWLINE		
Rm @ Meas. Temp	.80 @ 66F		
Rmt @ Meas. Temp	.60 @ 66F		
Rmc @ Meas. Temp	.96 @ 66F		
Source of Rmf / Rmc	MEASUREMENT		
Rm @ BHT	.43 @ 122F		
Time Circulation Stopped	2 HOURS		
Time Logger on Bottom			
Maximum Recorded Temperature	122F		
Equipment Number	4010		
Location	HAYS, KANSAS		
Recorded By	JASON CAPPELLUCCI		
Witnessed By	KURT TALBOTT		

<<< Fold Here >>>

All interpretations are opinions based on inferences from electrical or other measurements and we cannot and do not guarantee the accuracy or correctness of any interpretation, and we shall not, except in the case of gross or willful negligence on our part, be liable or responsible for any loss, costs, damages, or expenses incurred or sustained by anyone resulting from any interpretation made by any of our officers, agents or employees. These interpretations are also subject to our general terms and conditions set out in our current Price Schedule.

Comments

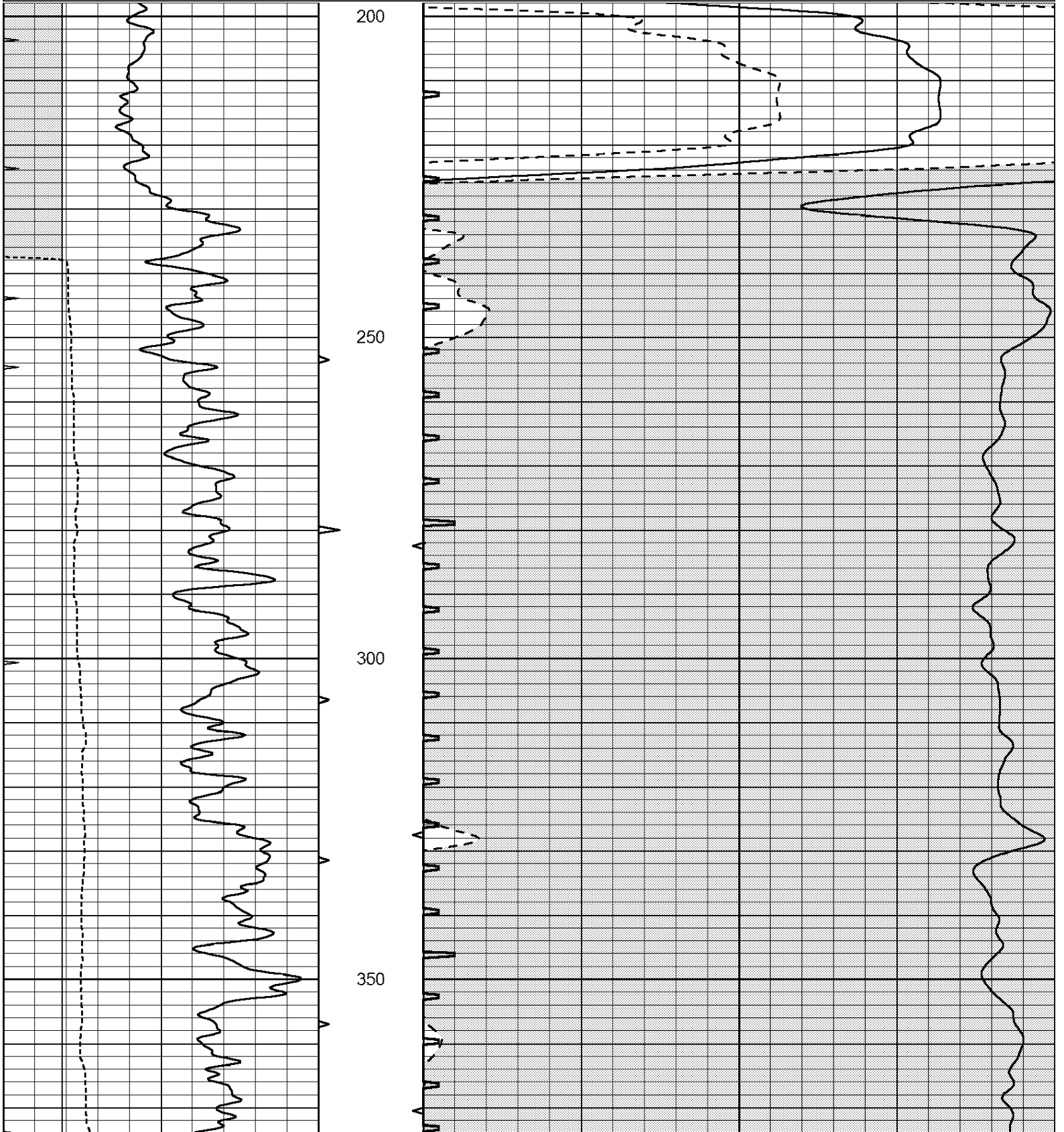
THANK YOU FOR USING NABORS HAYS, KANSAS (785) 628-6395
DIRECTIONS
GOVE, KS. - 4 S. TO RD. 0 - 2 1/2 W. - 1 MILE N. INTO

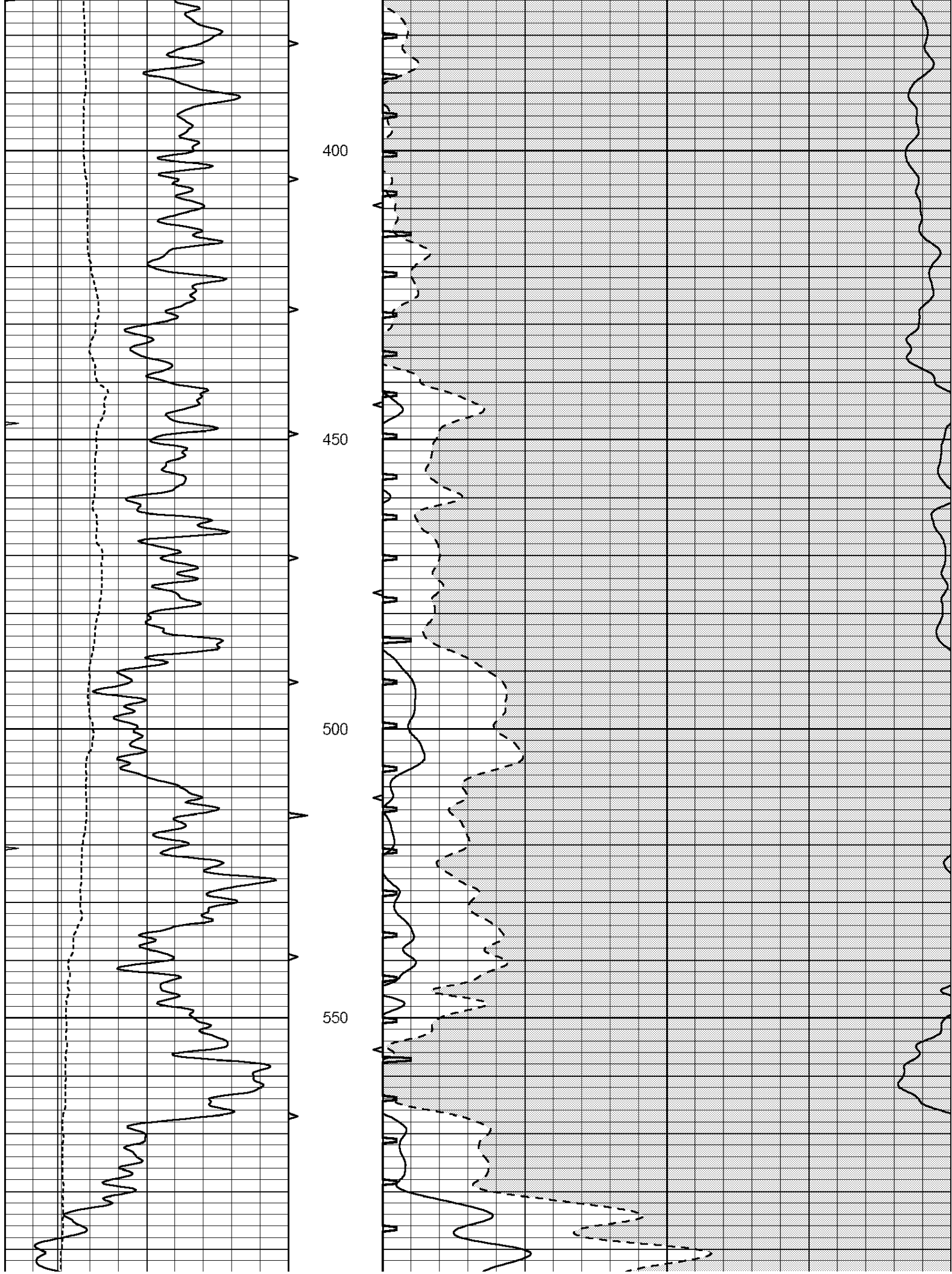


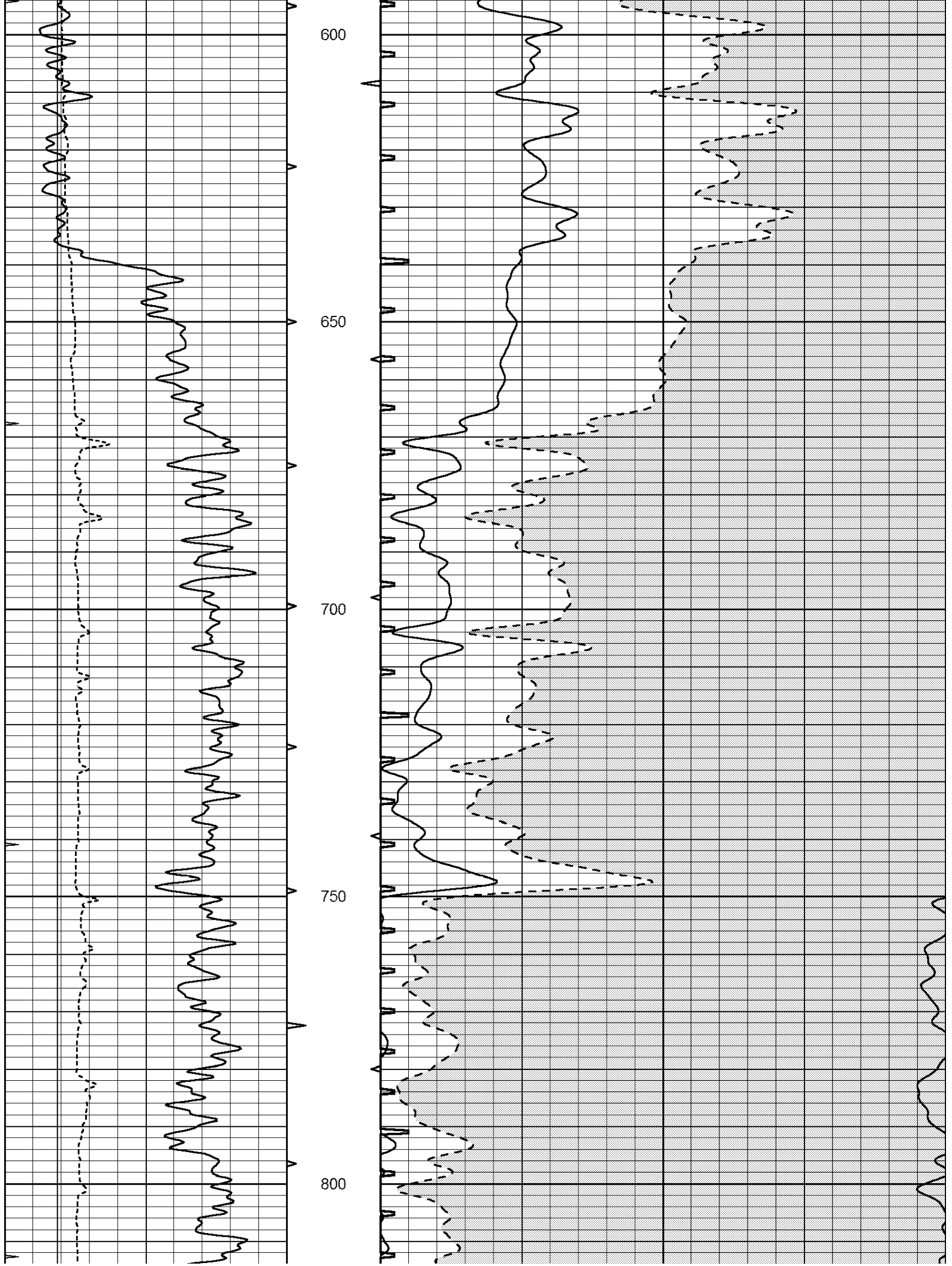
MAIN SECTION

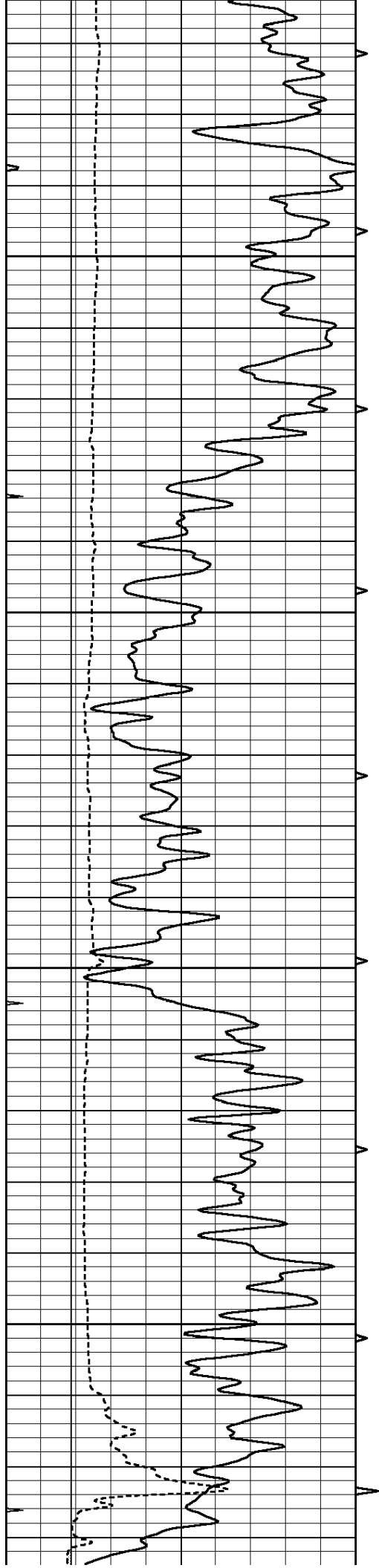
Database File: 010854ddn.db
 Dataset Pathname: pass6.2
 Presentation Format: _slt
 Dataset Creation: Wed Mar 06 21:32:54 2013 by Calc Open-Cased 090629
 Charted by: Depth in Feet scaled 1:240

0	GAMMA RAY (GAPI)	150	ABHV	140	DELTA TIME (usec/ft)	40
6	CALIPER (in)	16	10 (ft3) 0	30	SONIC POROSITY (pu)	-10
0	MINMK	20	TBHV	0	ITT (msec)	20
			0 (ft3) 10			







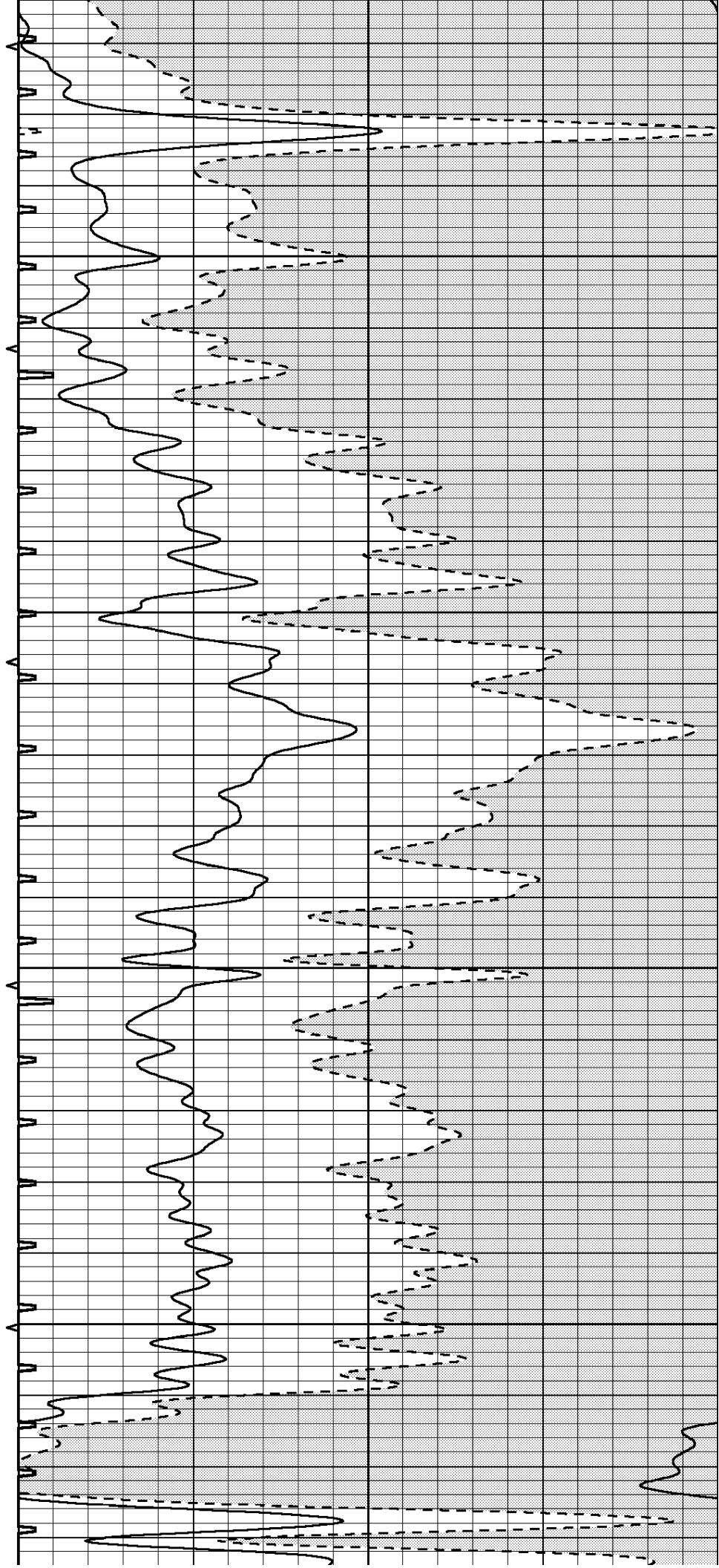


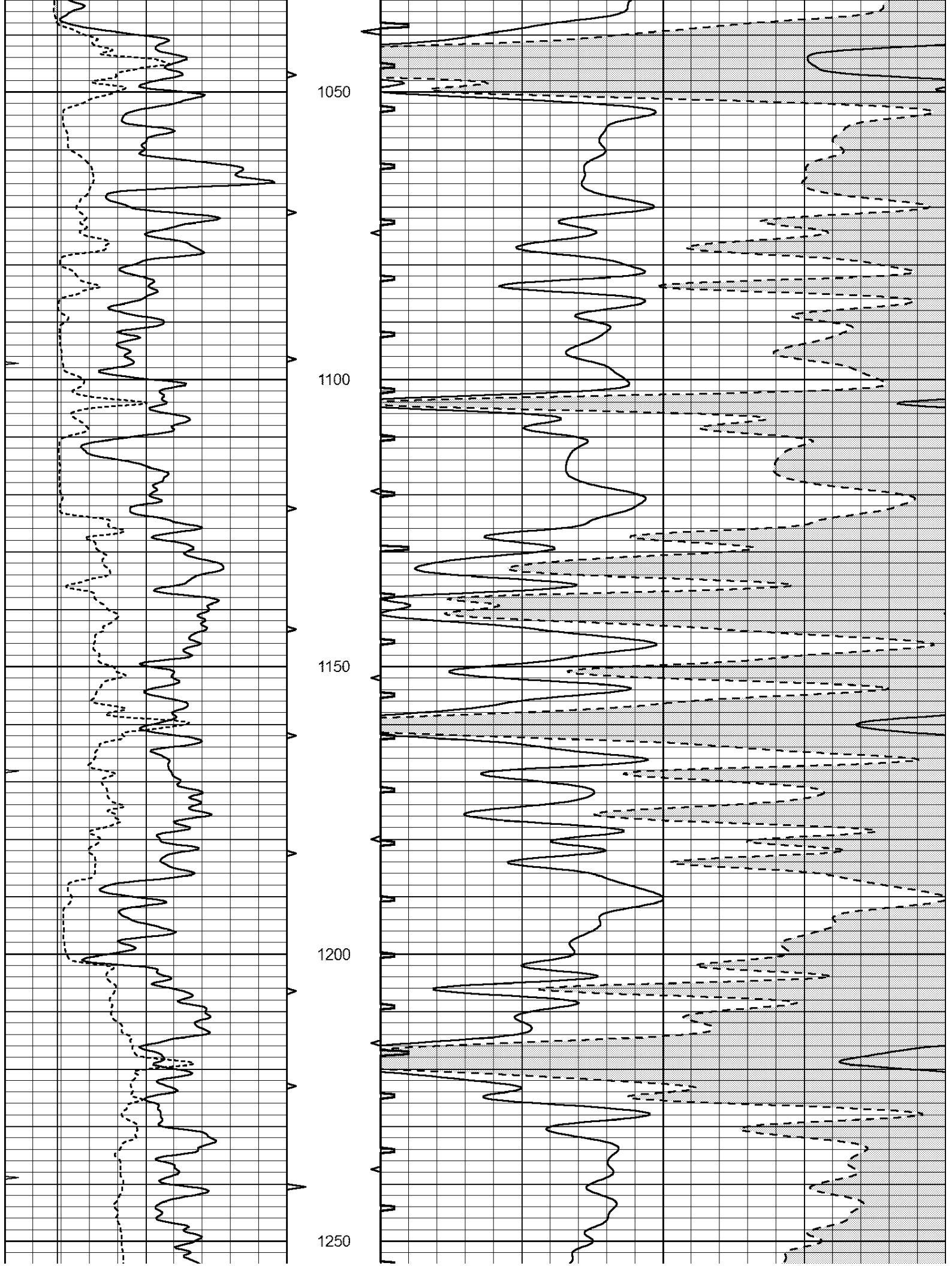
850

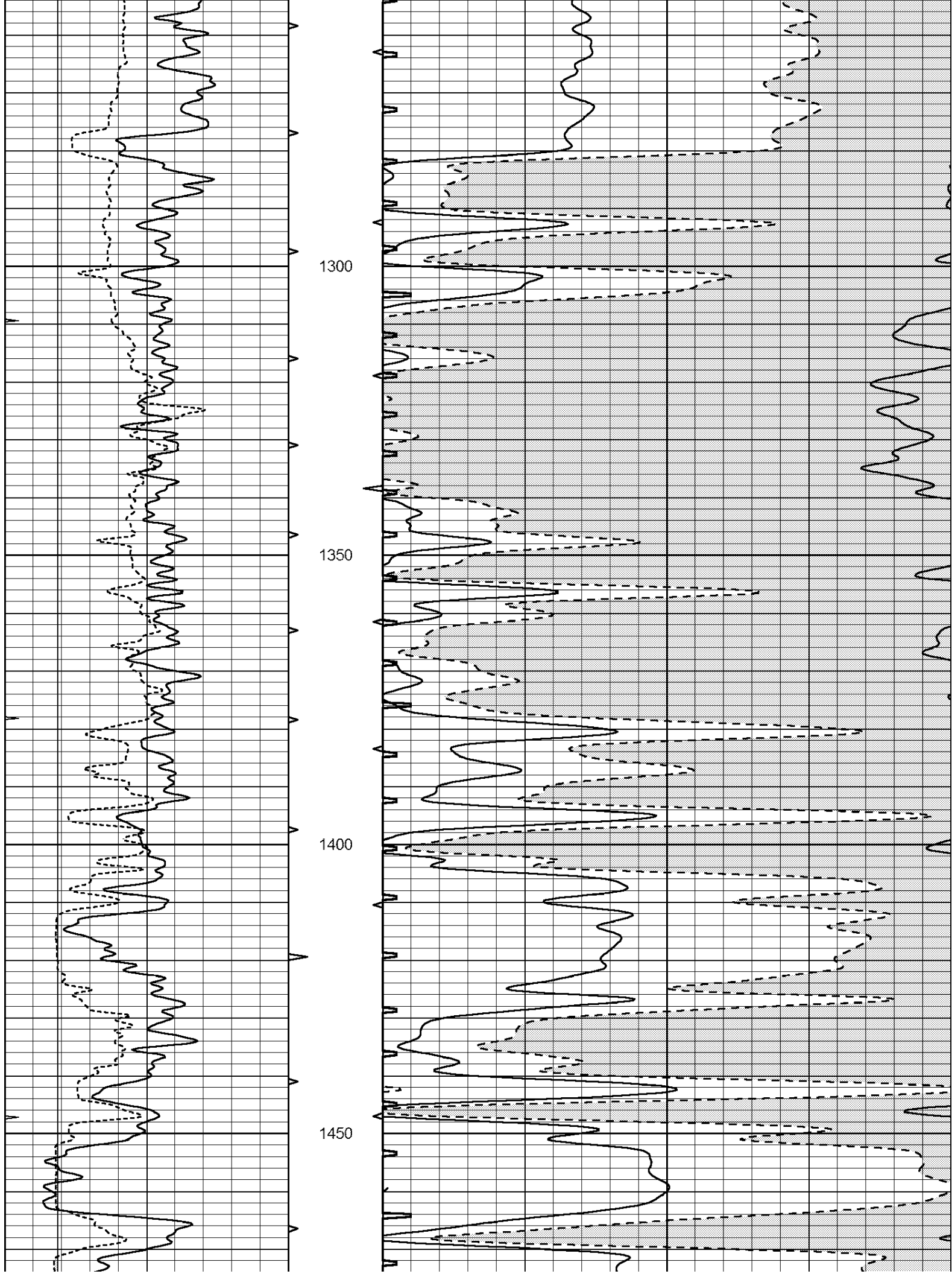
900

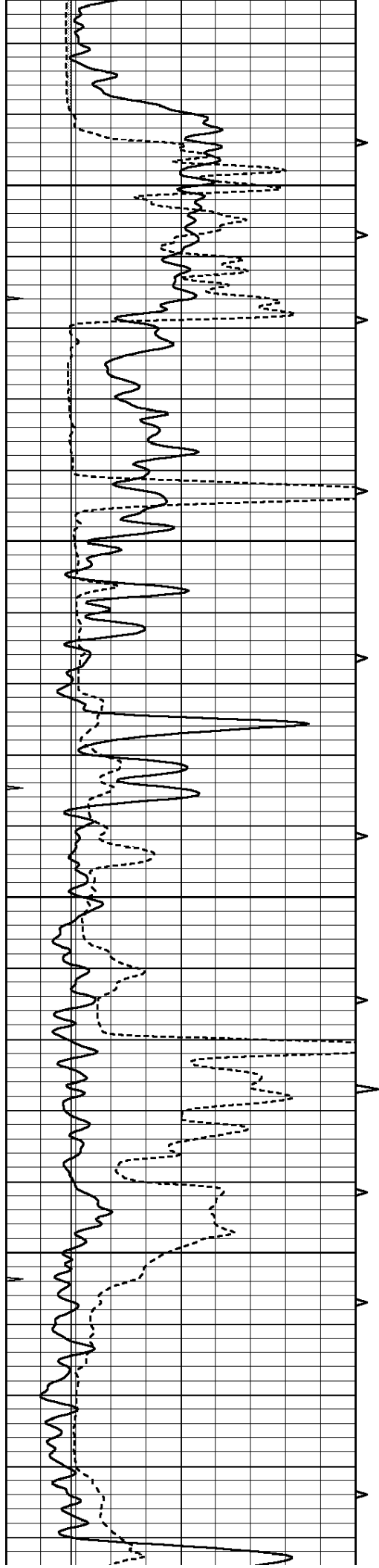
950

1000







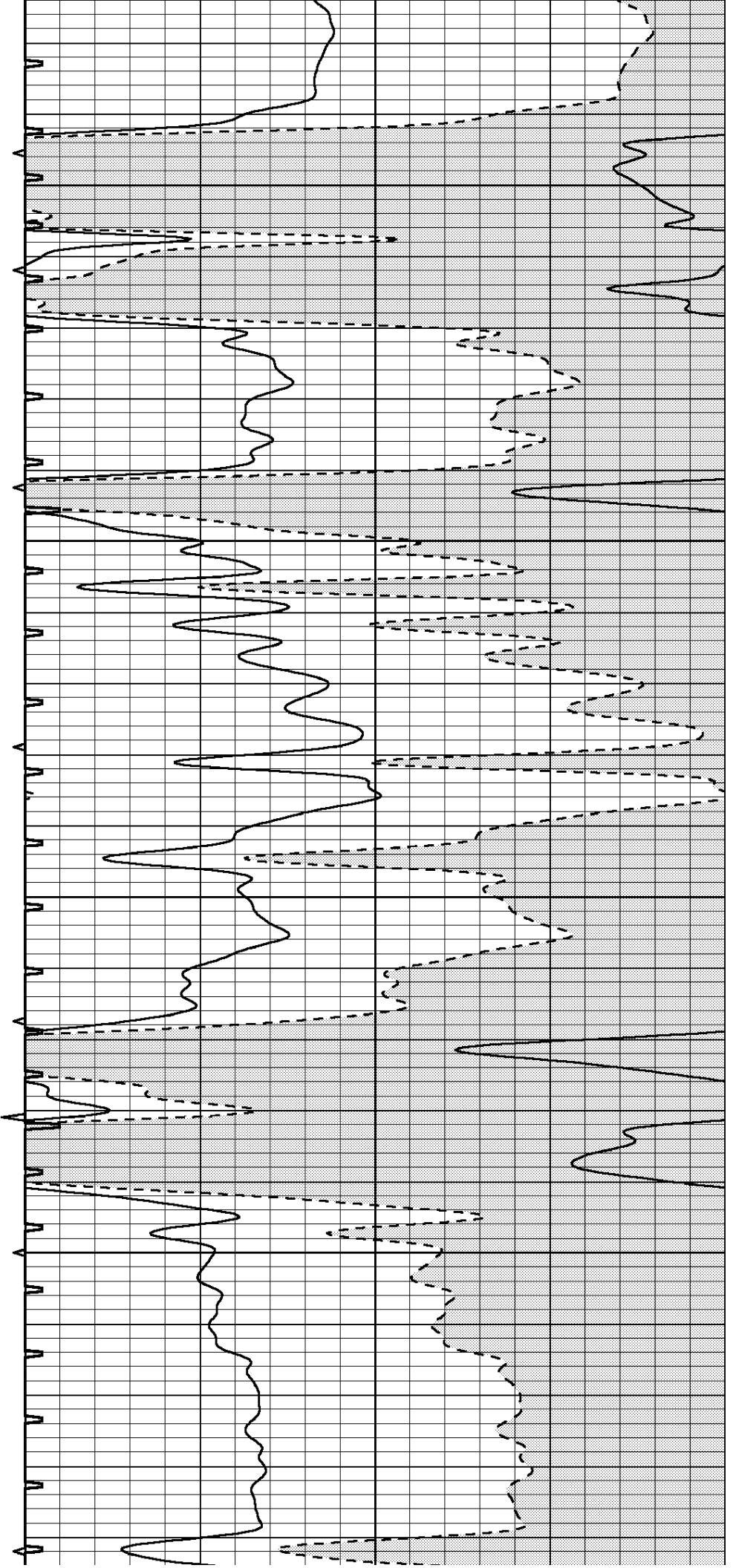


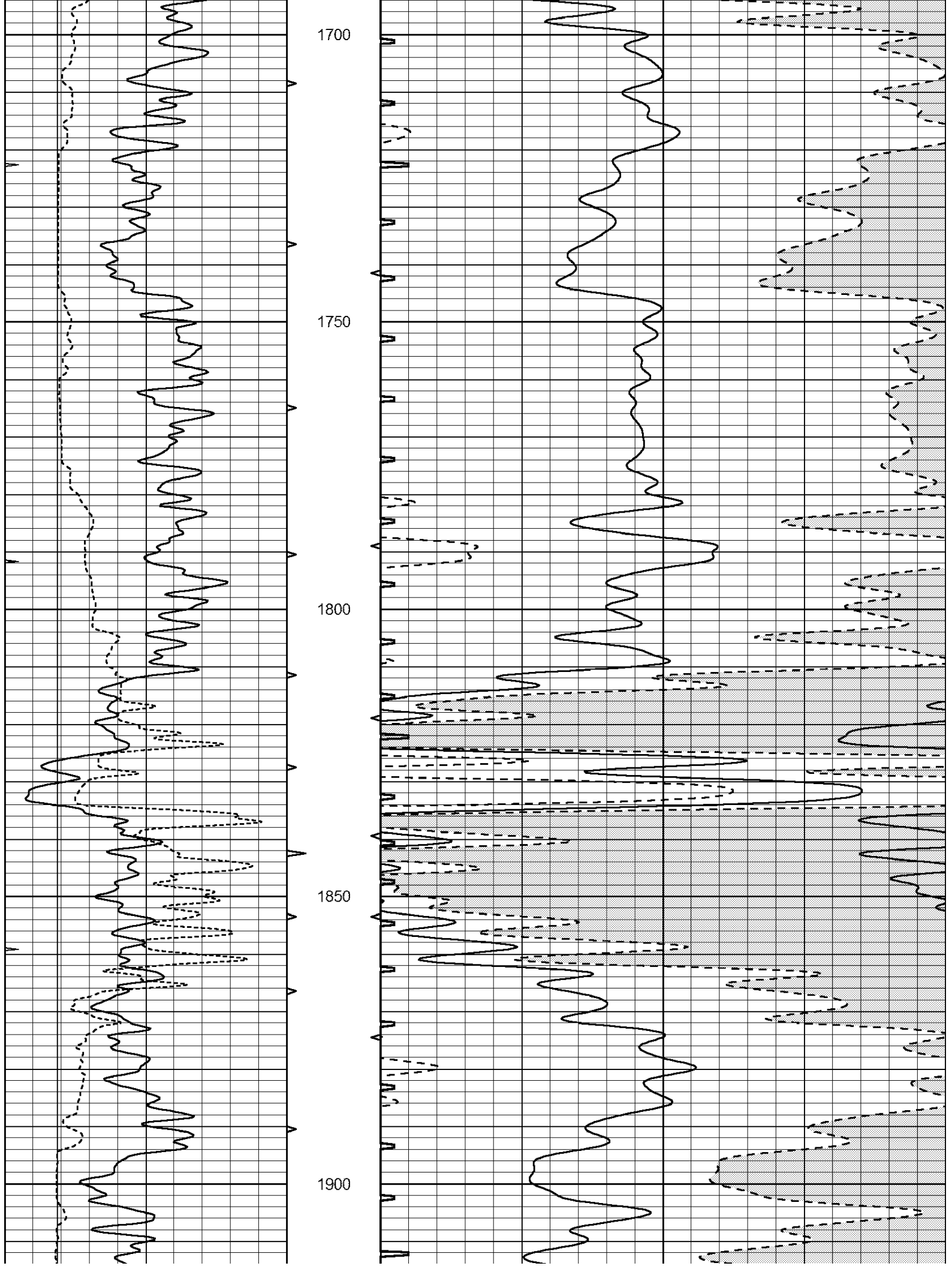
1500

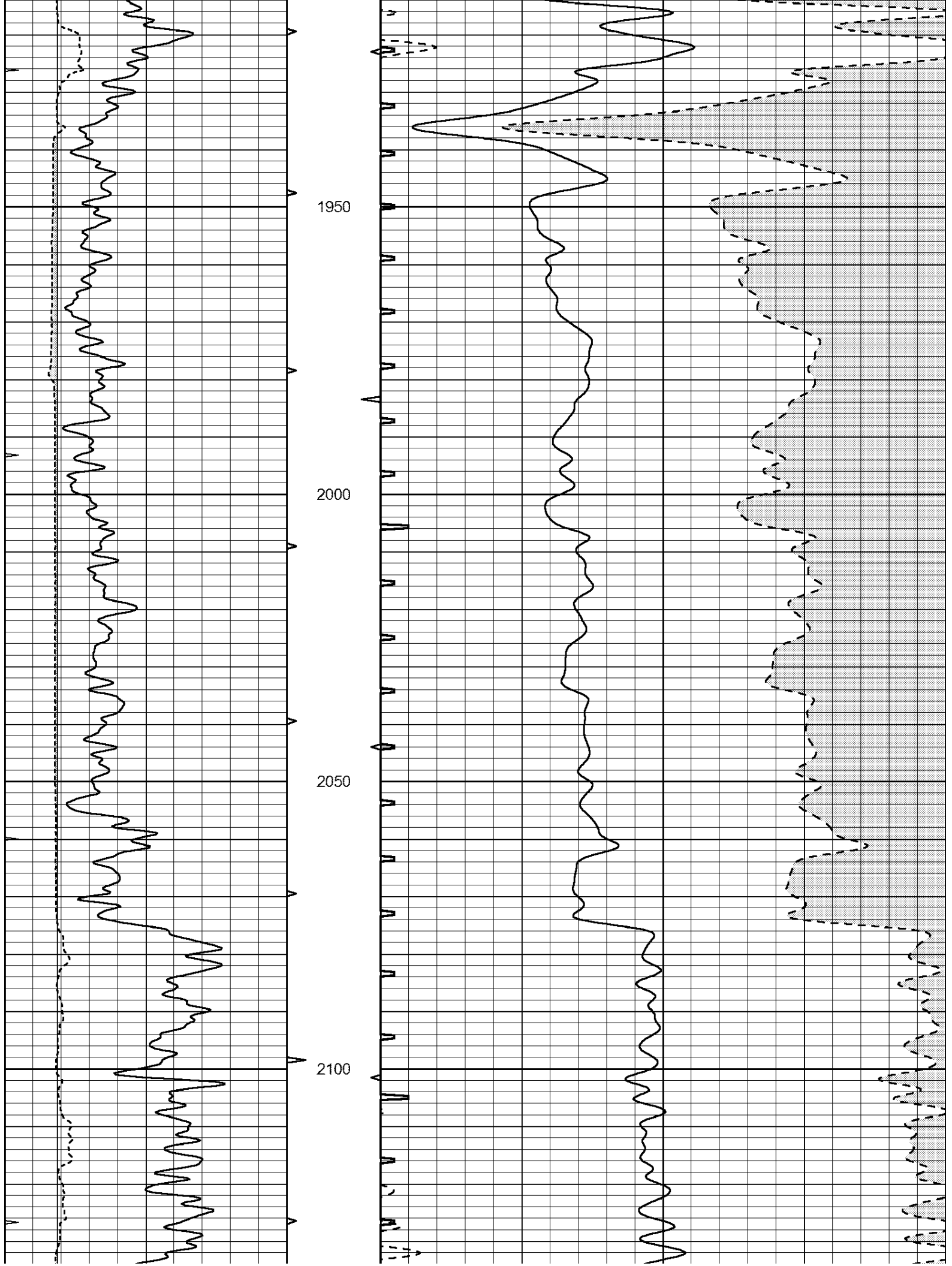
1550

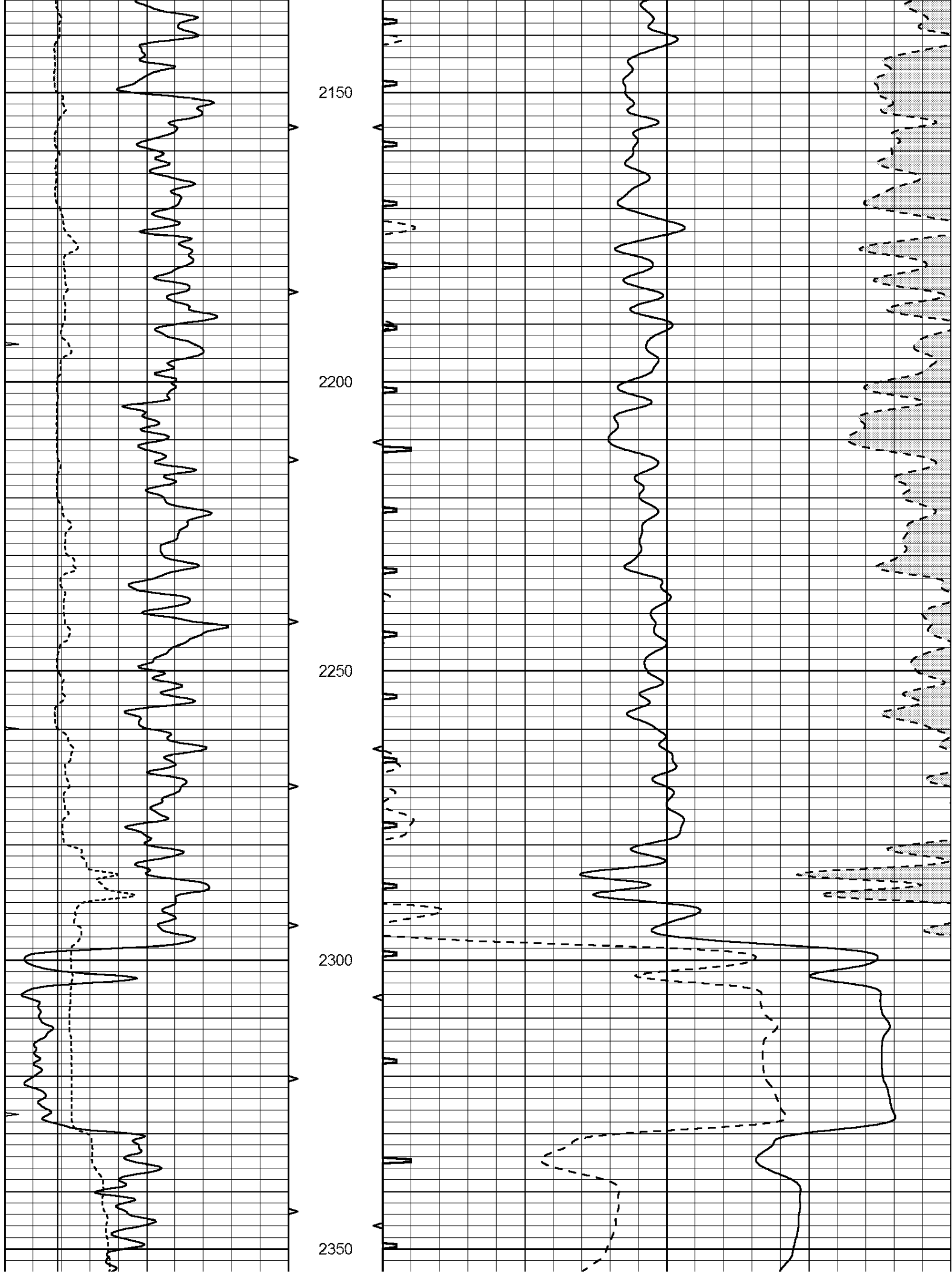
1600

1650

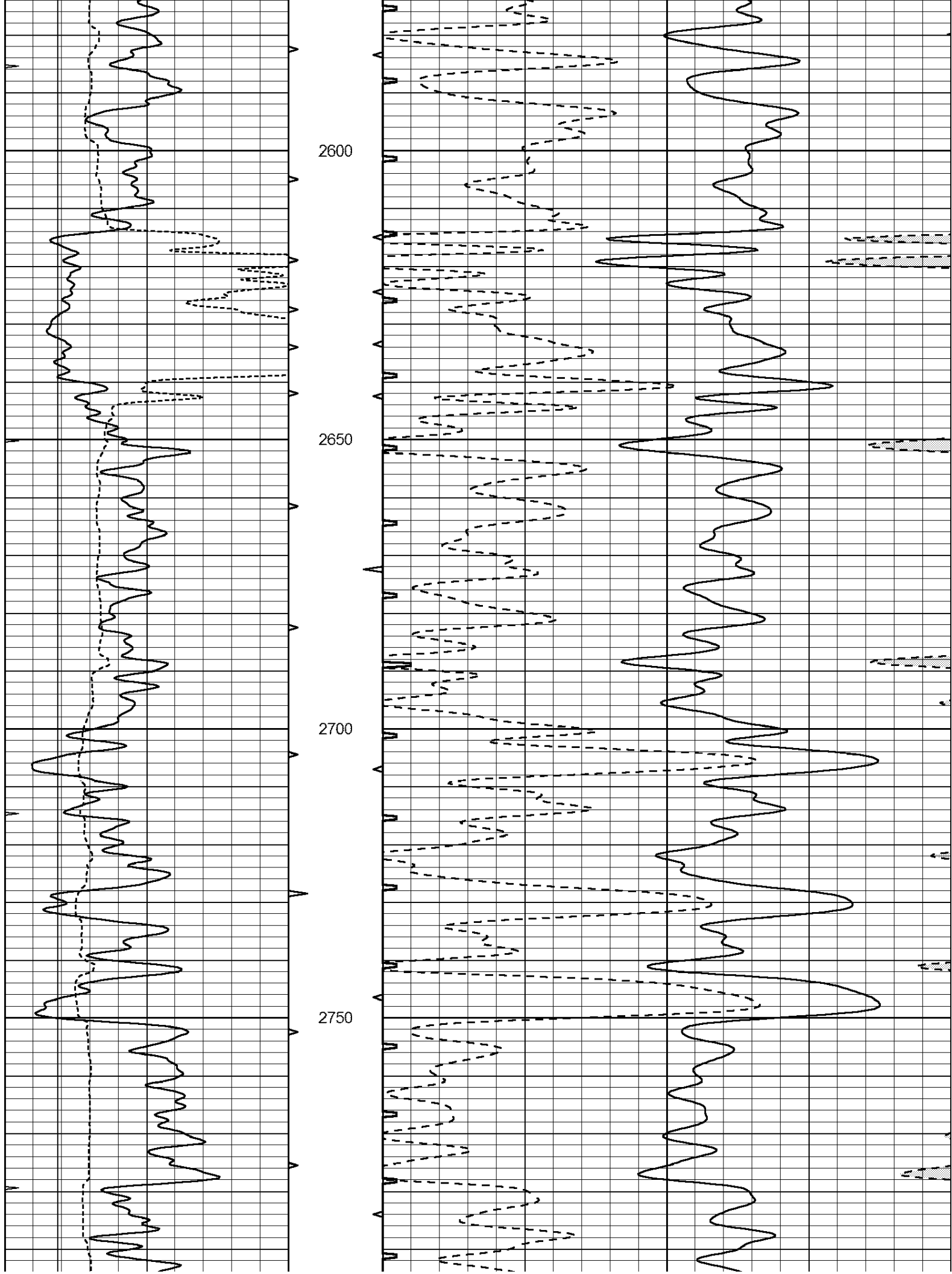


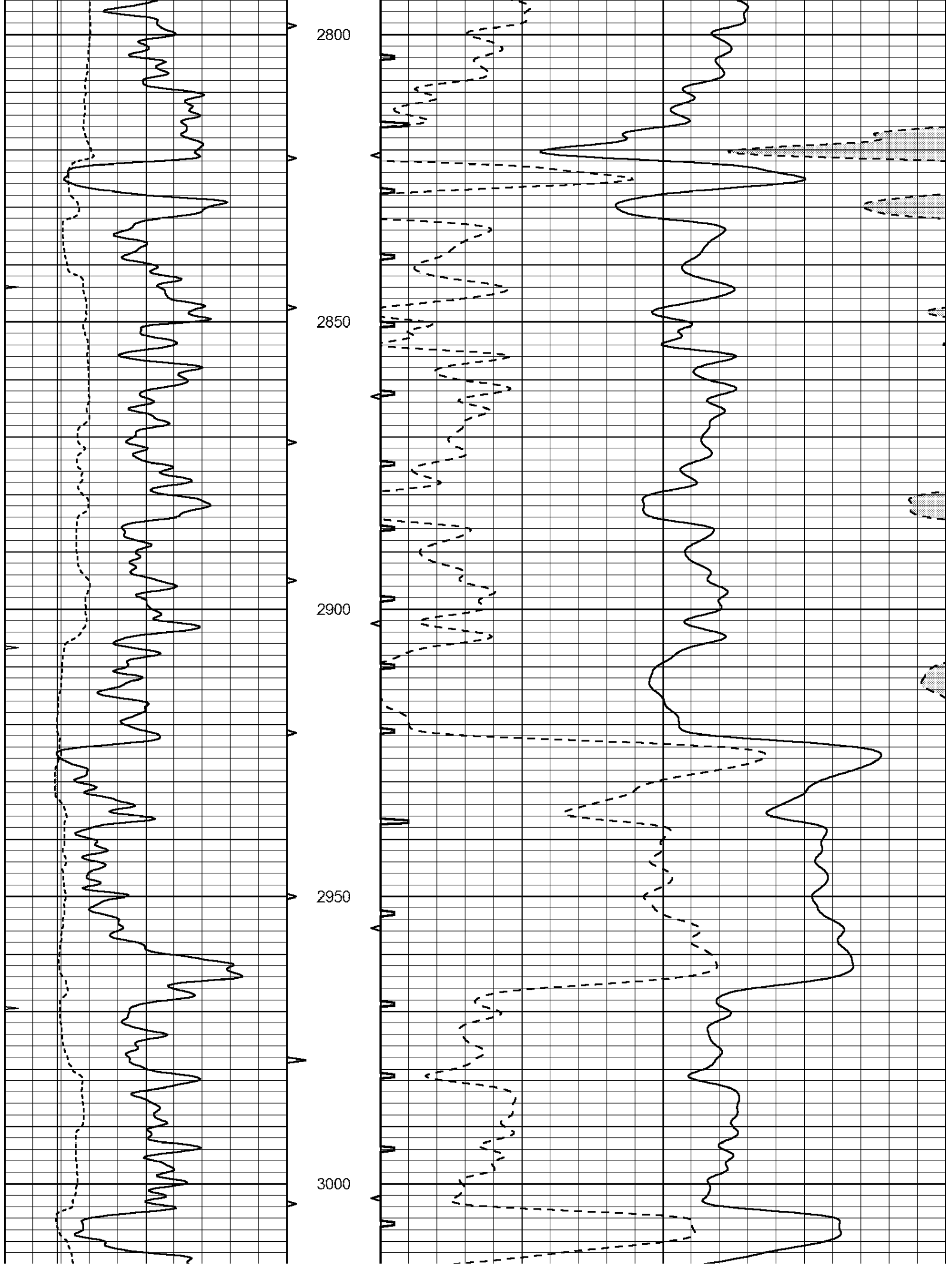


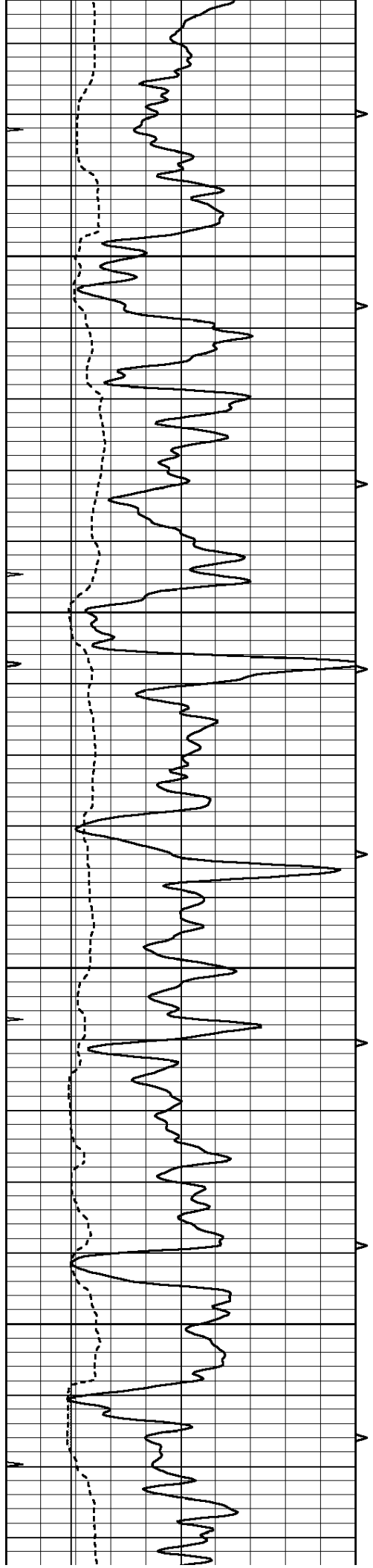










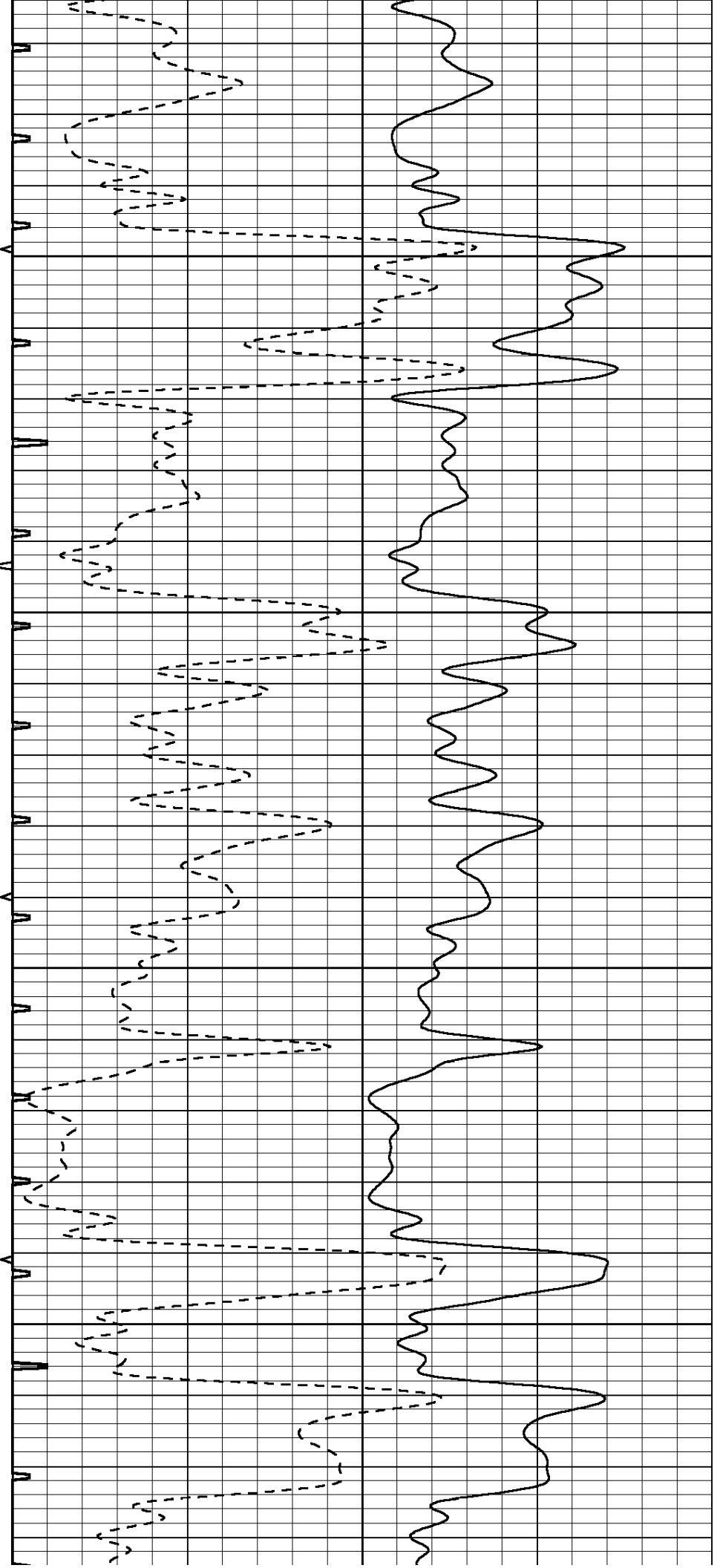


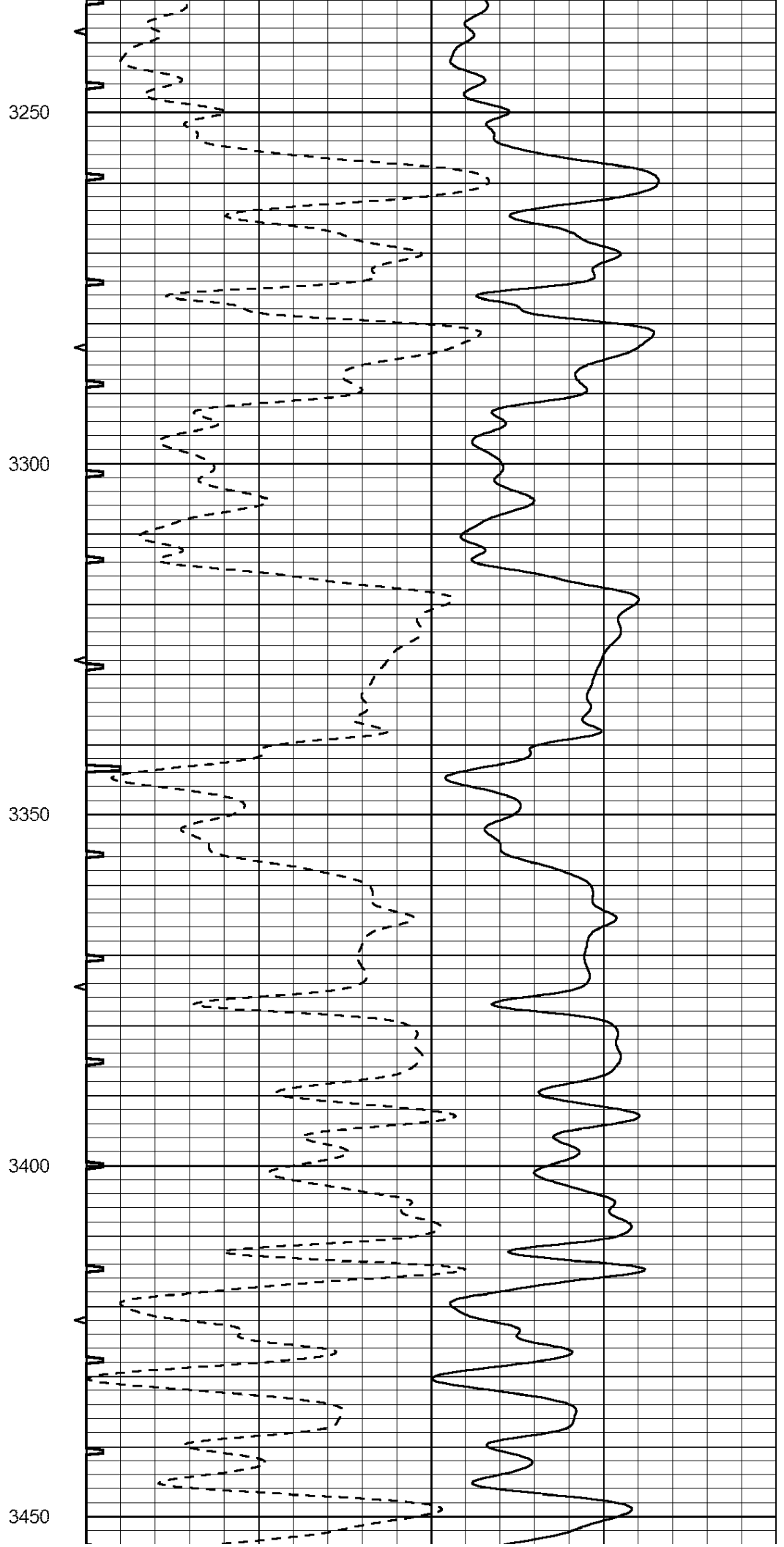
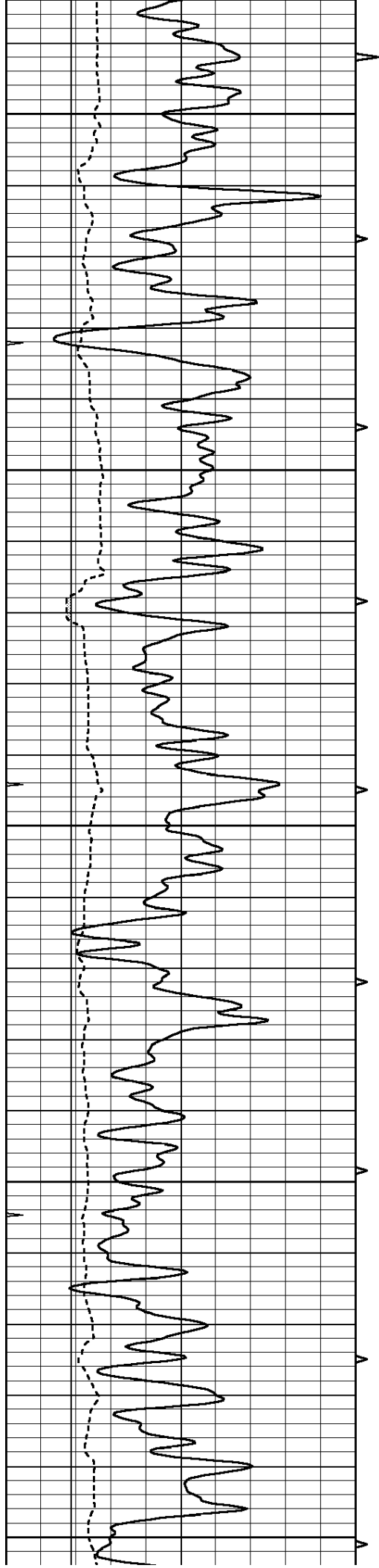
3050

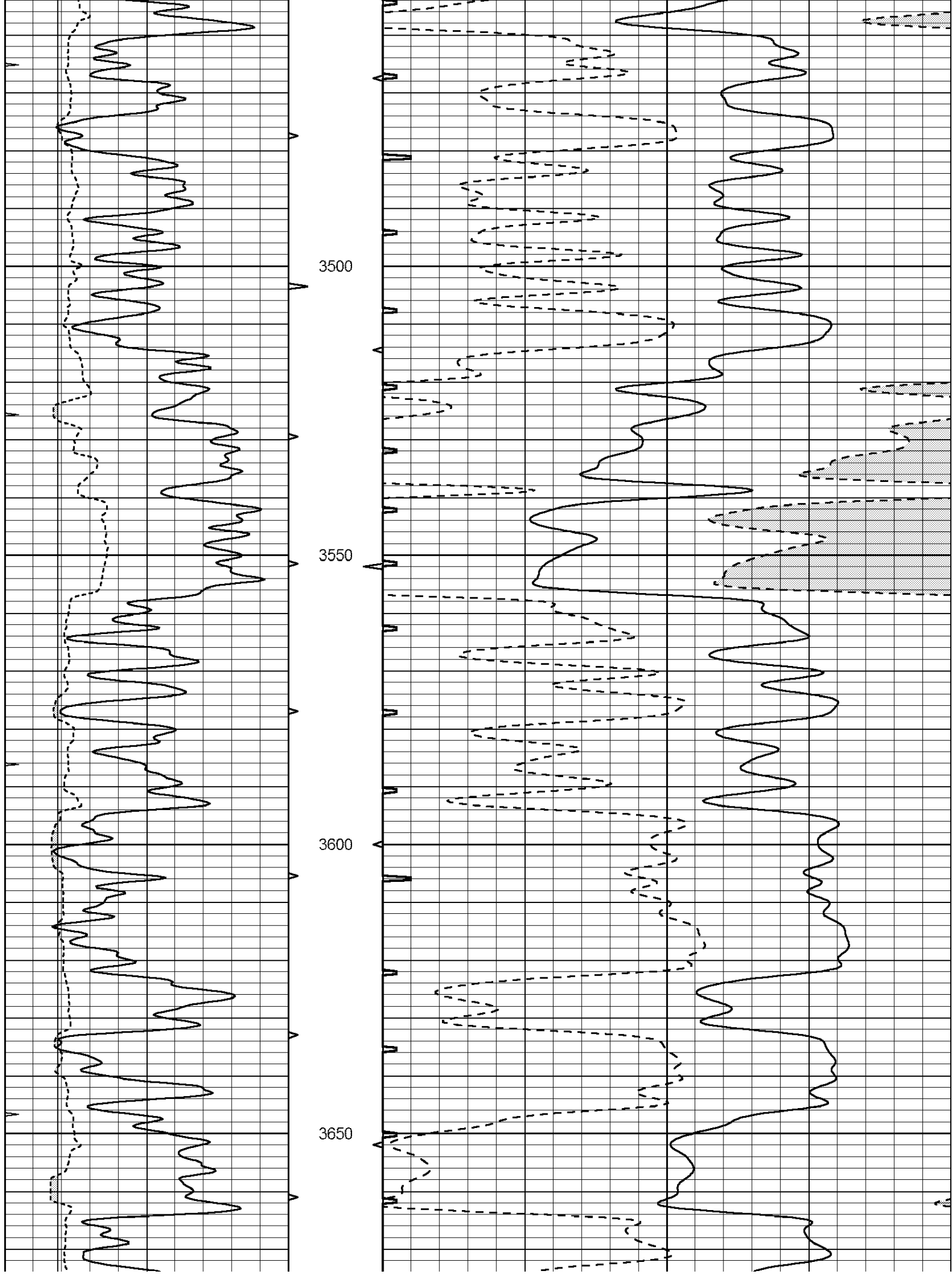
3100

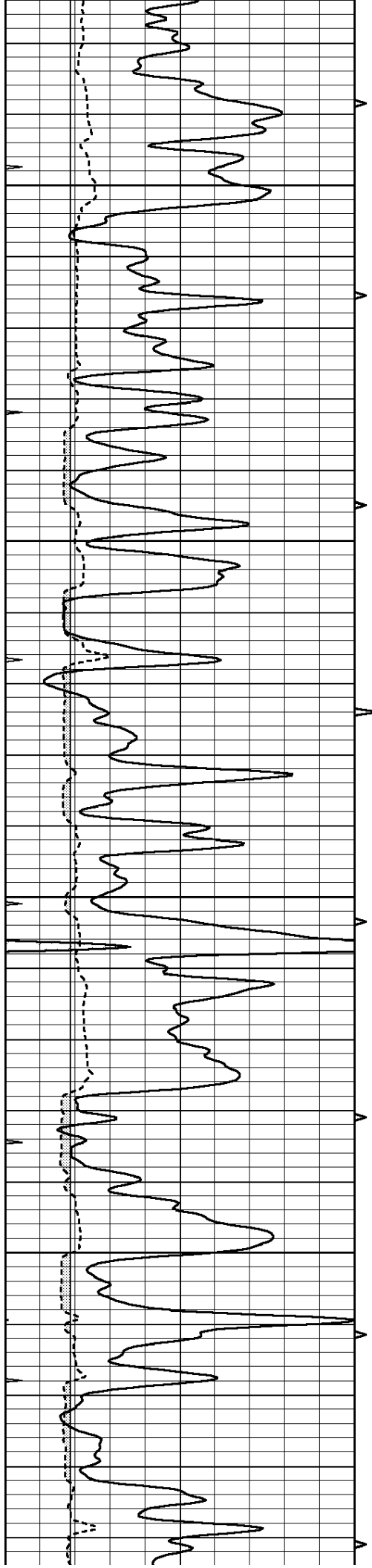
3150

3200







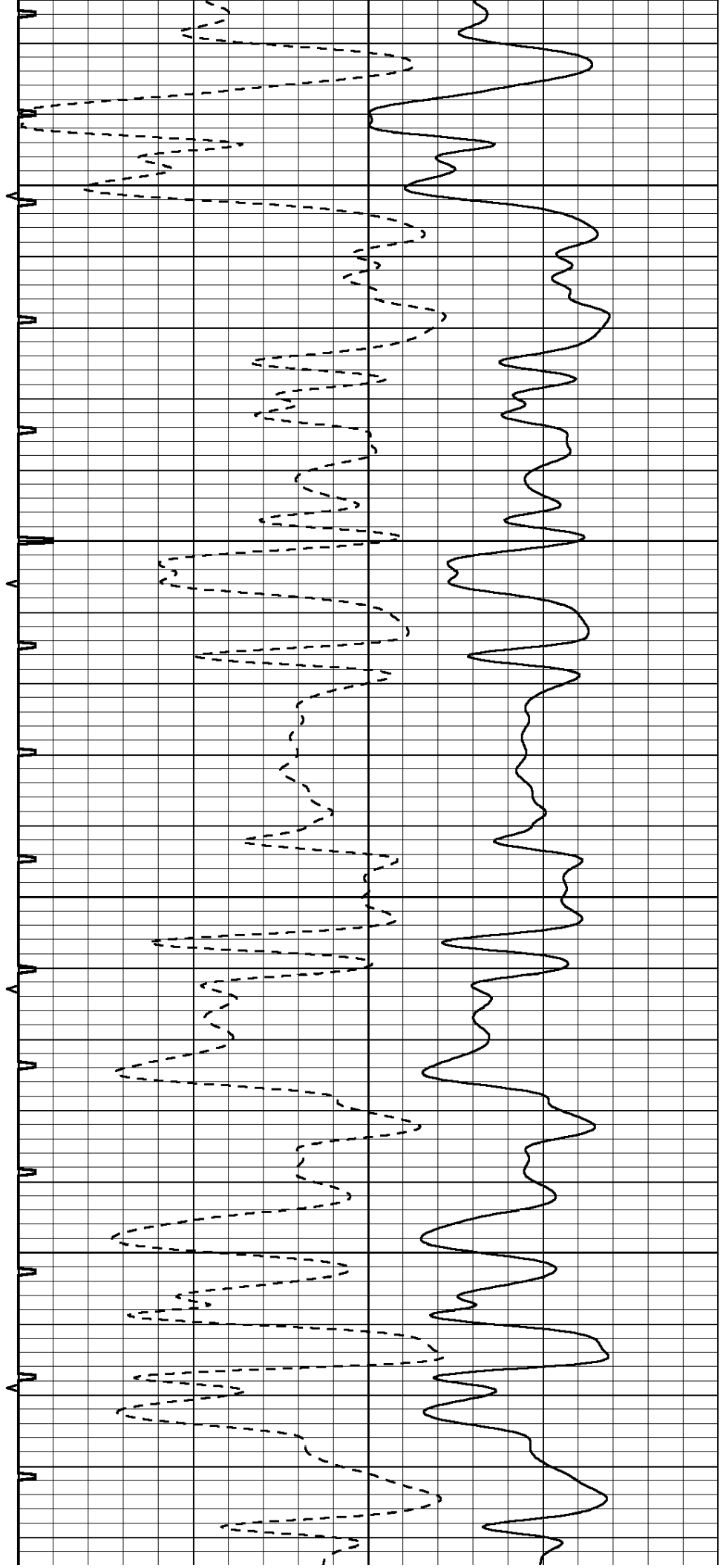


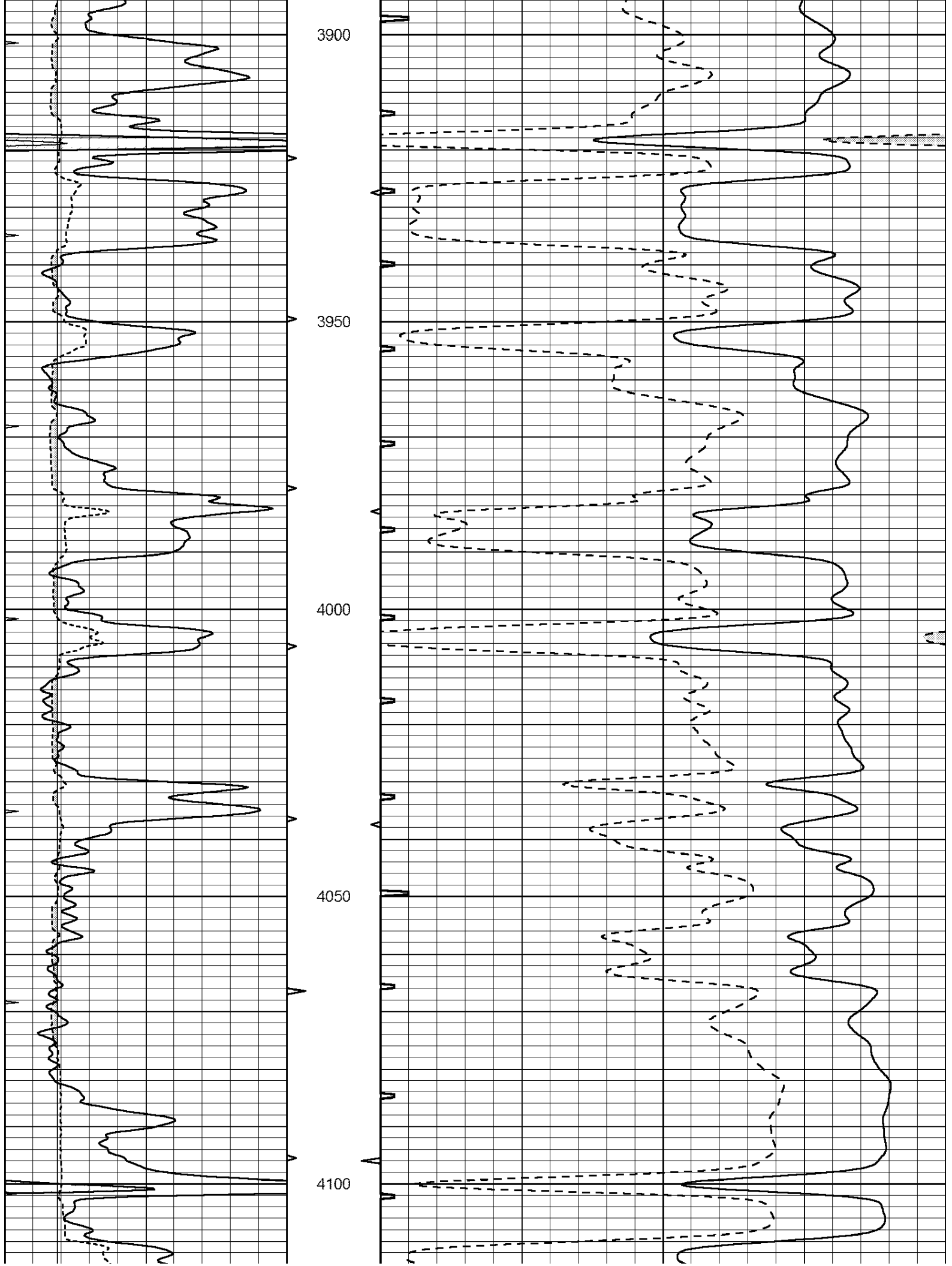
3700

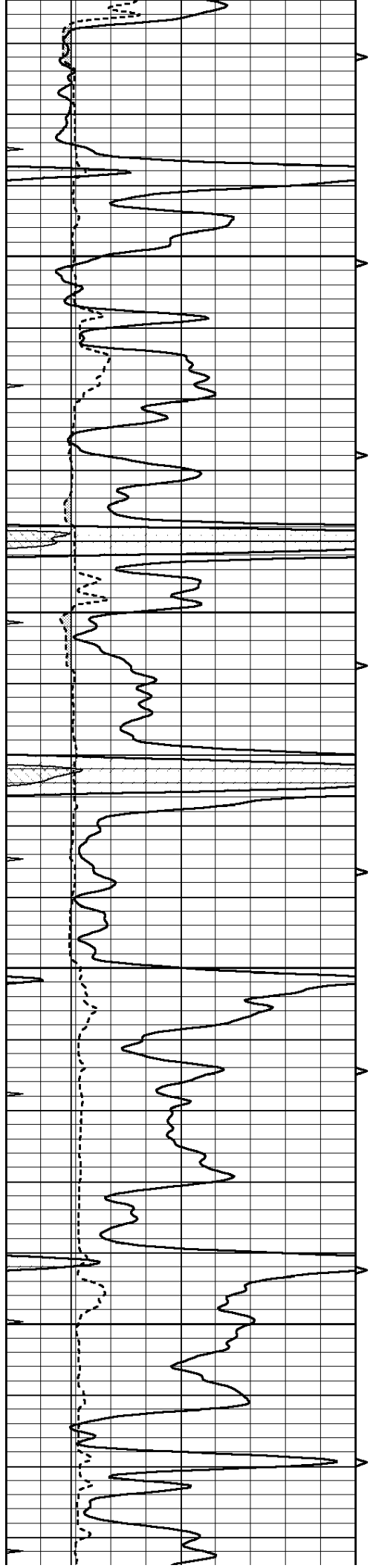
3750

3800

3850





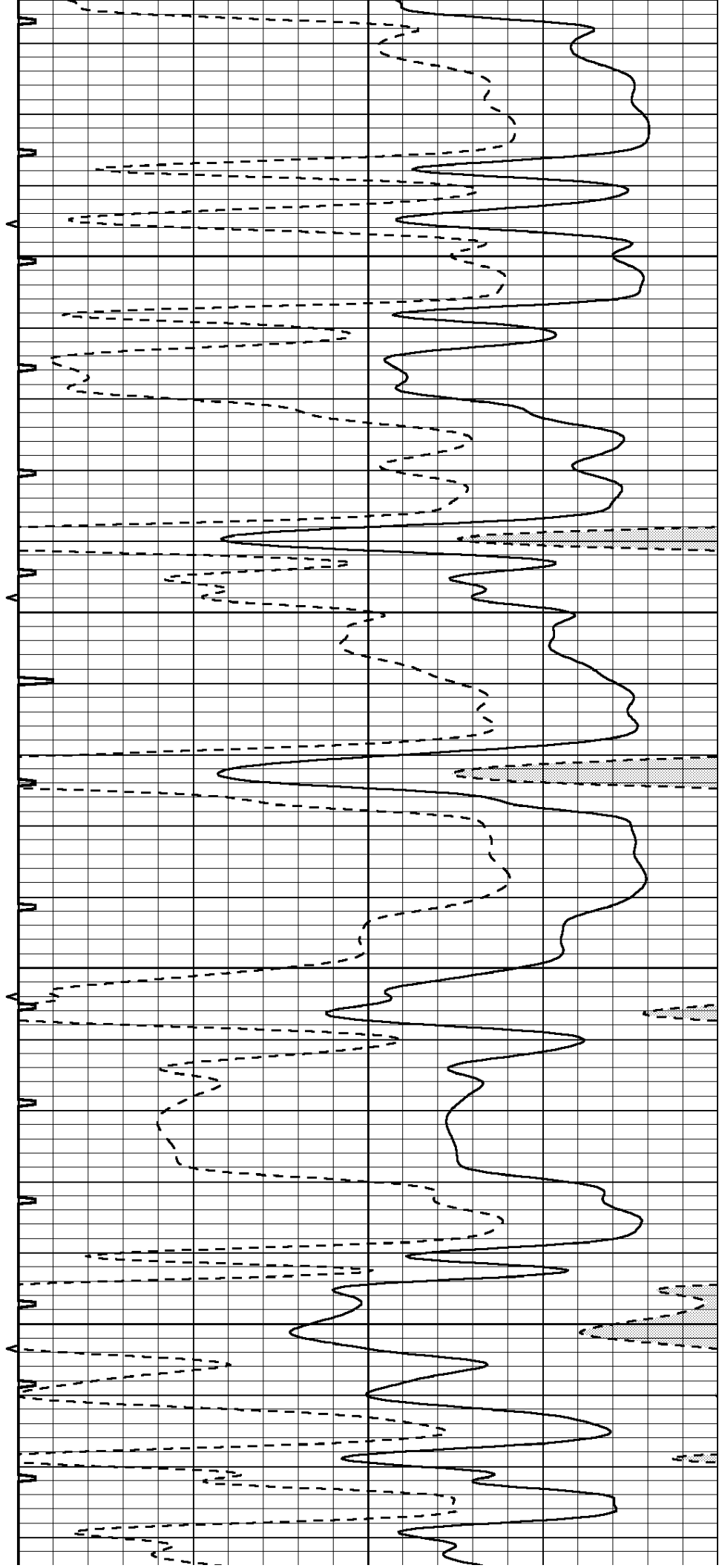


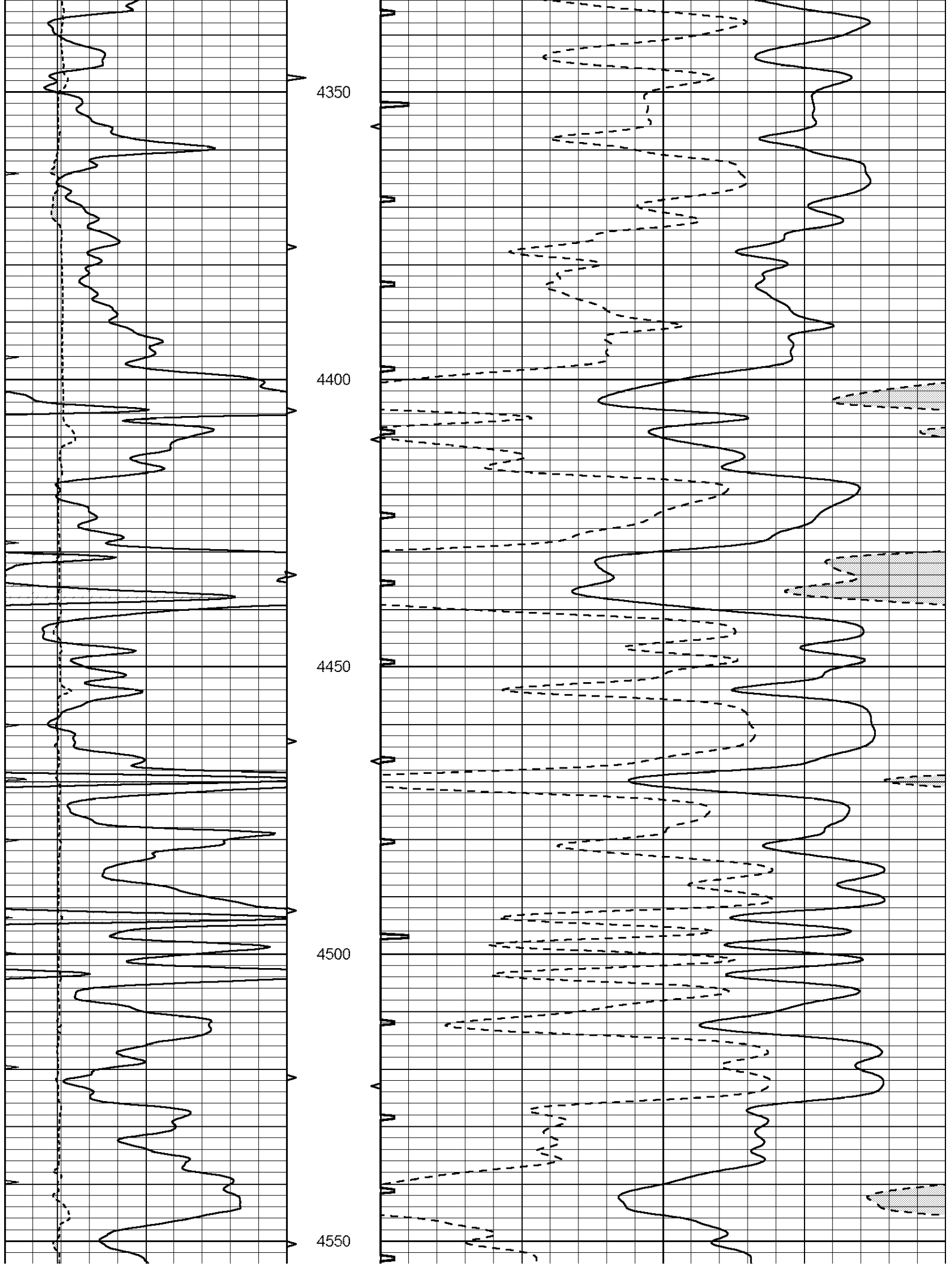
4150

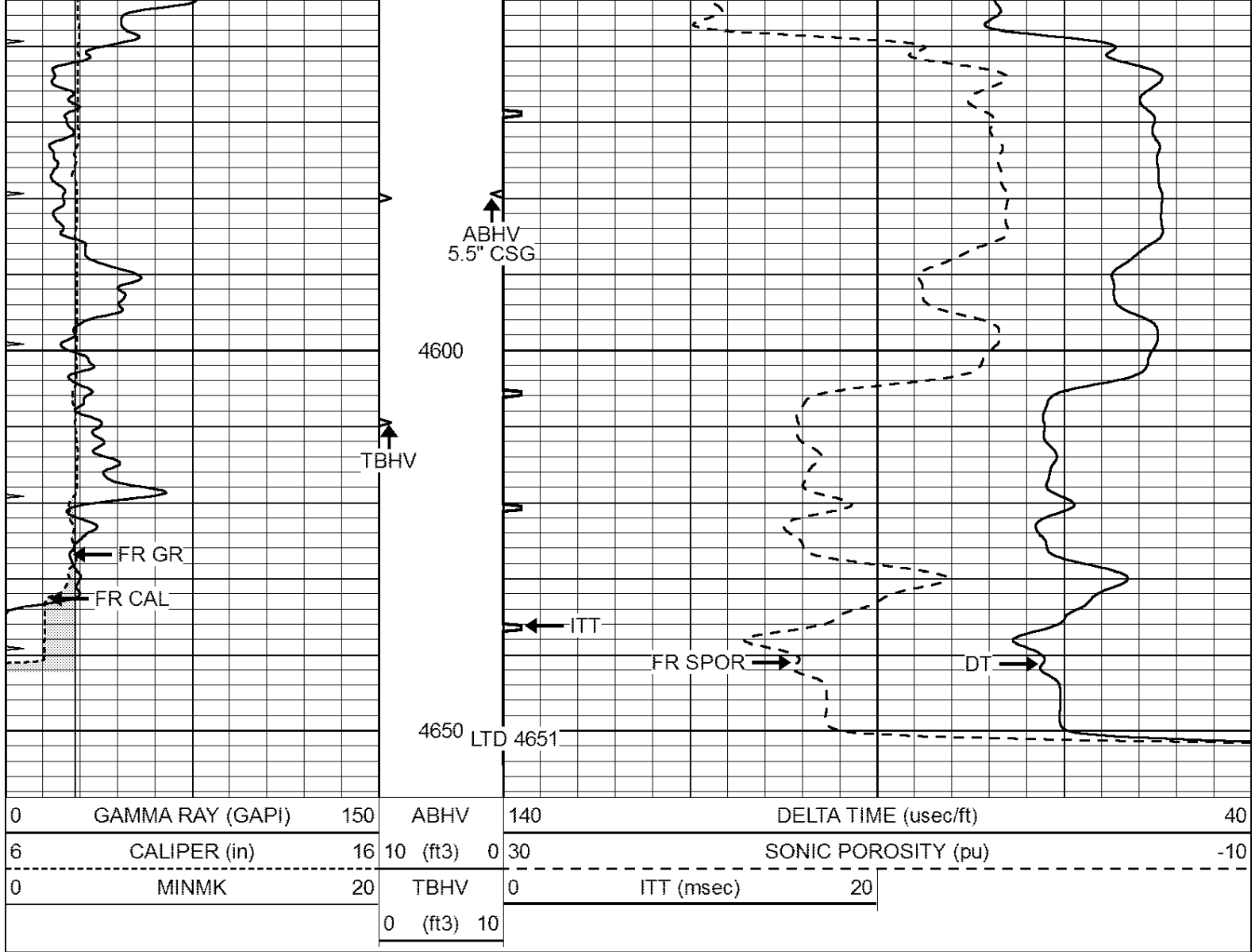
4200

4250

4300



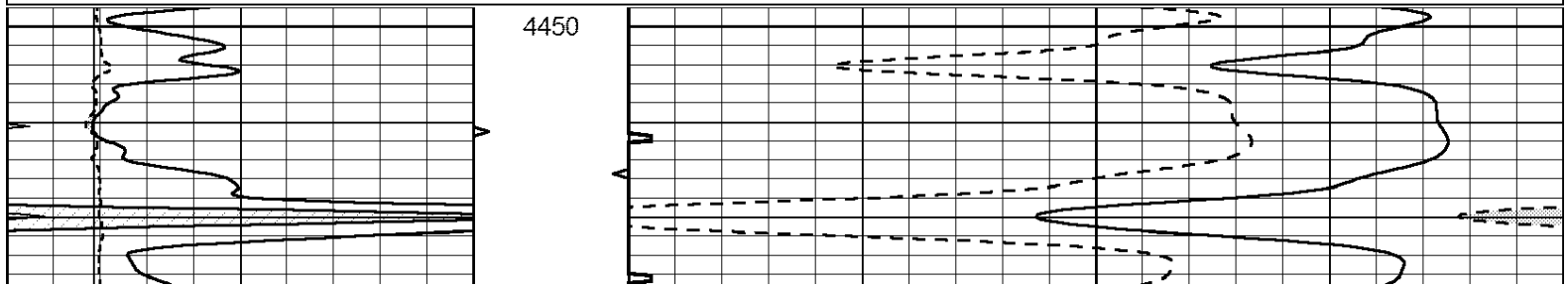


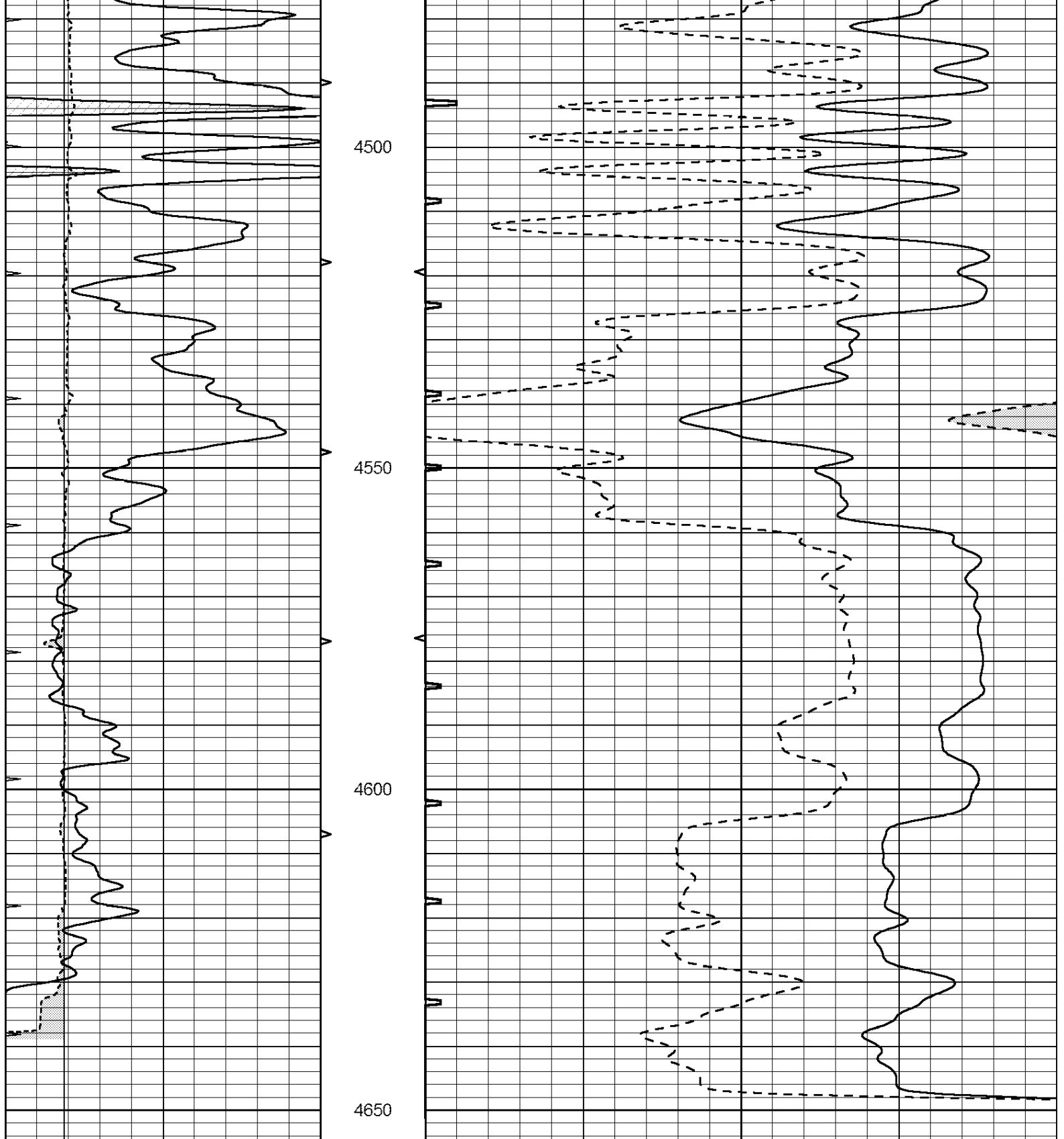


REPEAT SECTION

Database File: 010854ddn.db
 Dataset Pathname: pass5.1
 Presentation Format: _slt
 Dataset Creation: Wed Mar 06 20:37:43 2013 by Calc Open-Cased 090629
 Charted by: Depth in Feet scaled 1:240

0	GAMMA RAY (GAPI)	150	ABHV	140	DELTA TIME (usec/ft)	40
6	CALIPER (in)	16	10 (ft3)	0 30	SONIC POROSITY (pu)	-10
0	MINMK	20	TBHV	0	ITT (msec)	20
			0 (ft3)	10		





0	GAMMA RAY (GAPI)	150	ABHV	140	DELTA TIME (usec/ft)	40
6	CALIPER (in)	16	10 (ft3) 0	30	SONIC POROSITY (pu)	-10
0	MINMK	20	TBHV	0	ITT (msec)	20
			0 (ft3) 10			