



Pioneer Energy Services

Borehole Compensated Sonic Log

15-153-20,906-00-00

API No.

Company **Murfin Drilling Company, Inc**
 Well **Sramek # 'B' 1-11**
 Field **Wildcat**
 County **Rawlins** State **Kansas**

Location **NW NE NE SW
2405' FSL & 2000' FWL**
 Sec: **11** Twp: **3 S** Rge: **36 W**

Other Services
CNL/CDL
MEL/DIL

Permanent Datum **Ground Level** Elevation **3242**
 Log Measured From **Kelly Bushing** **10 Ft. Above Perm. Datum**
 Drilling Measured From **Kelly Bushing**

Elevation
K.B. 3252
D.F.
G.L. 3242

Date	9/9/2012	
Run Number	Two	
Type Log	BHC Sonic	
Depth Driller	4950	
Depth Logger	4954	
Bottom Logged Interval	4943	
Top Logged Interval	300	
Type Fluid In Hole	Chemical	
Salinity, PPM CL	1000	
Density	9.3	
Level	Full	
Max. Rec. Temp. F	126	
Operating Rig Time	5 Hours	
Equipment -- Location	108 Hays	
Recorded By	D Kerr	
Witnessed By	Wes Hansen	

Borehole Record				Casing Record			
Run No.	Bit	From	To	Size	Wgt.	From	To
1	12.25	00	302	8.625	24#	00	302
2	7.875	302	4950				

<<< Fold Here >>>

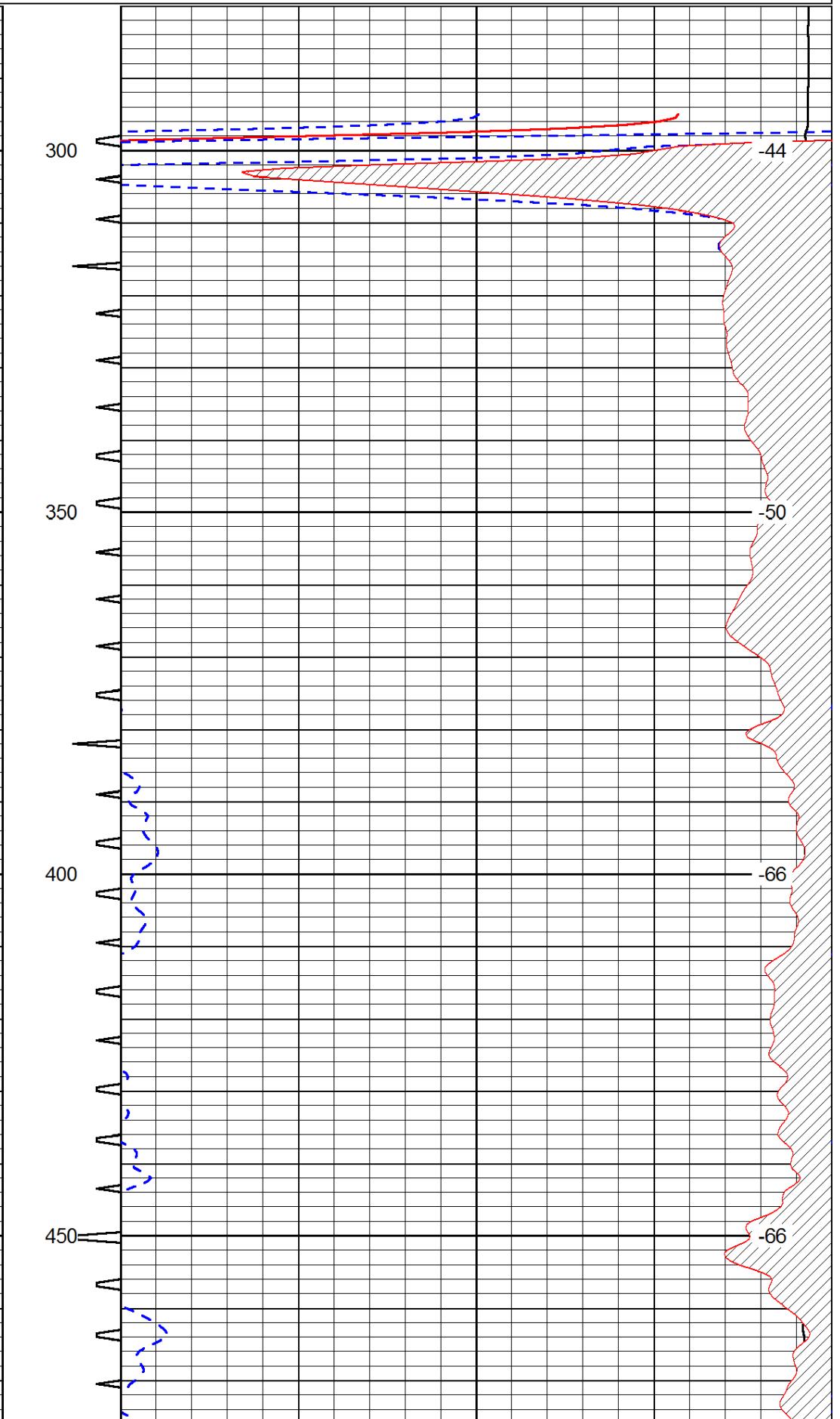
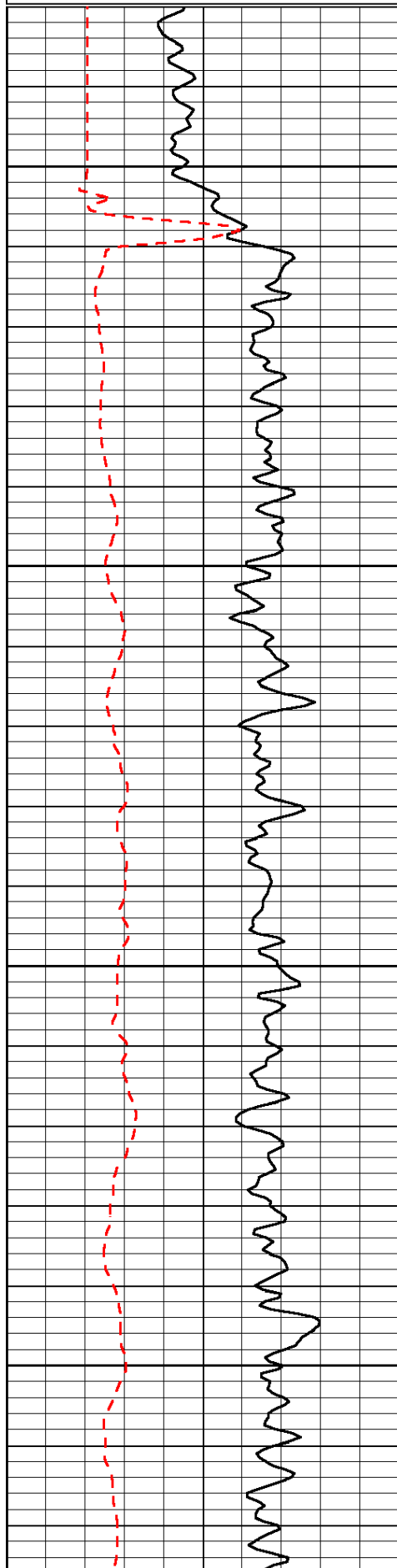
All interpretations are opinions based on inferences from electrical or other measurements and we cannot and do not guarantee the accuracy or correctness of any interpretation, and we shall not, except in the case of gross or willful negligence on our part, be liable or responsible for any loss, costs, damages, or expenses incurred or sustained by anyone resulting from any interpretation made by any of our officers, agents or employees. These interpretations are also subject to our general terms and conditions set out in our current Price Schedule.

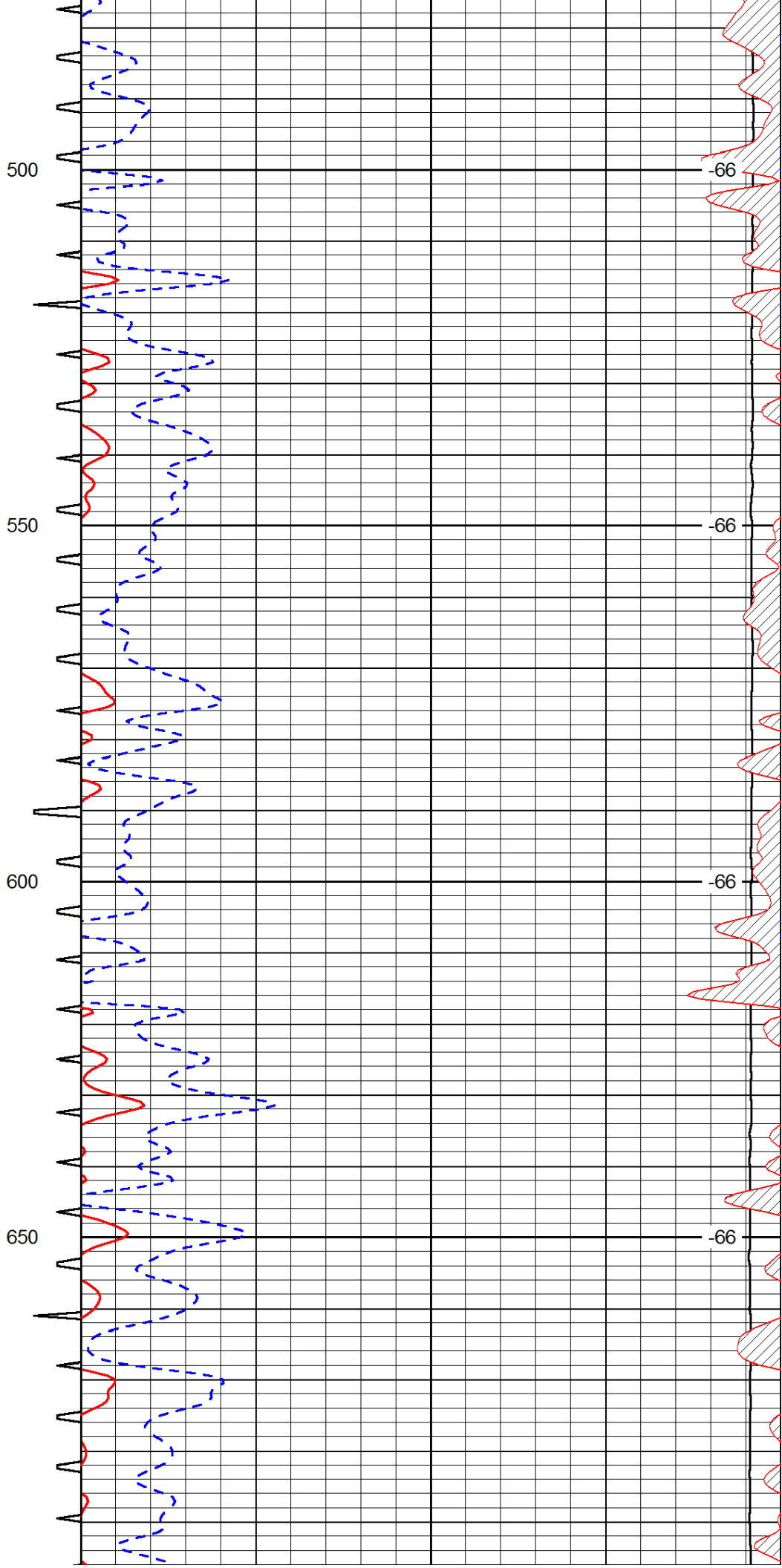
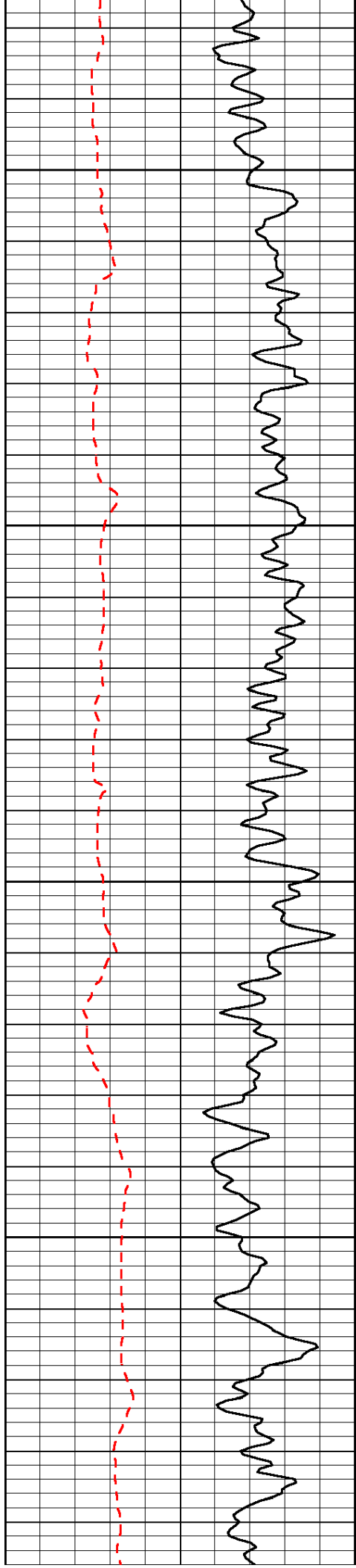
Comments

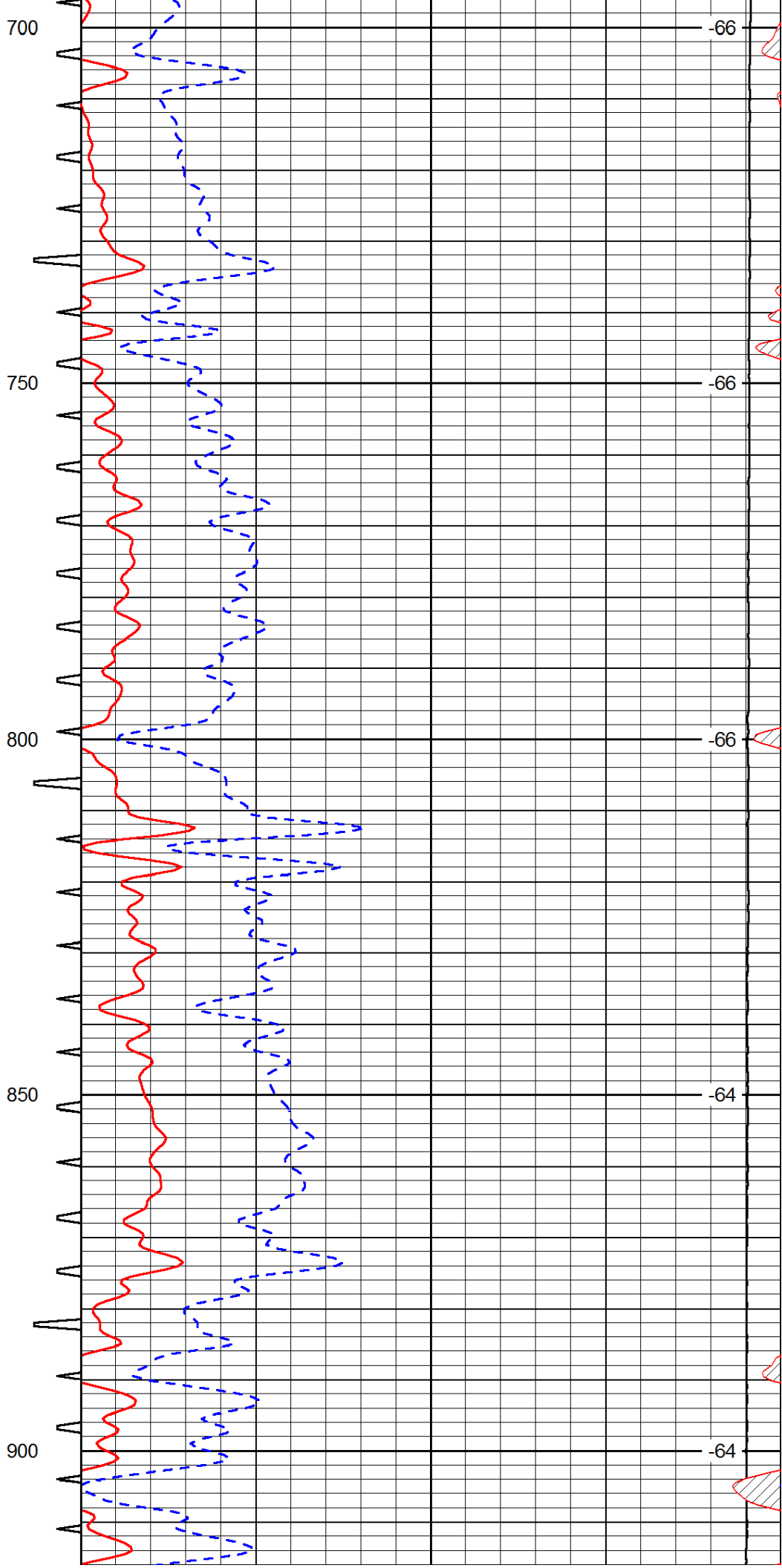
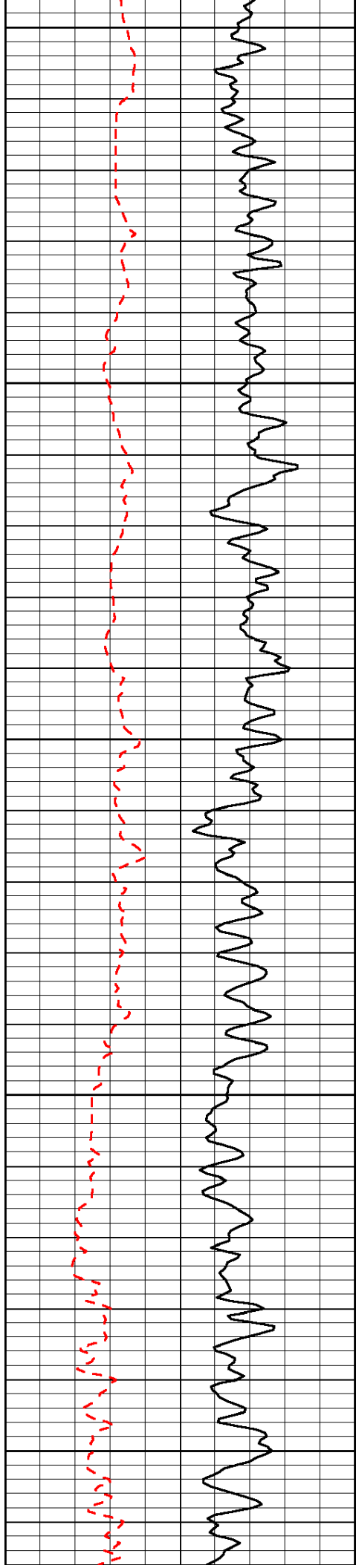
Thank you for using Pioneer Energy Services
www.pioneerenergy.com
 785 625 3858

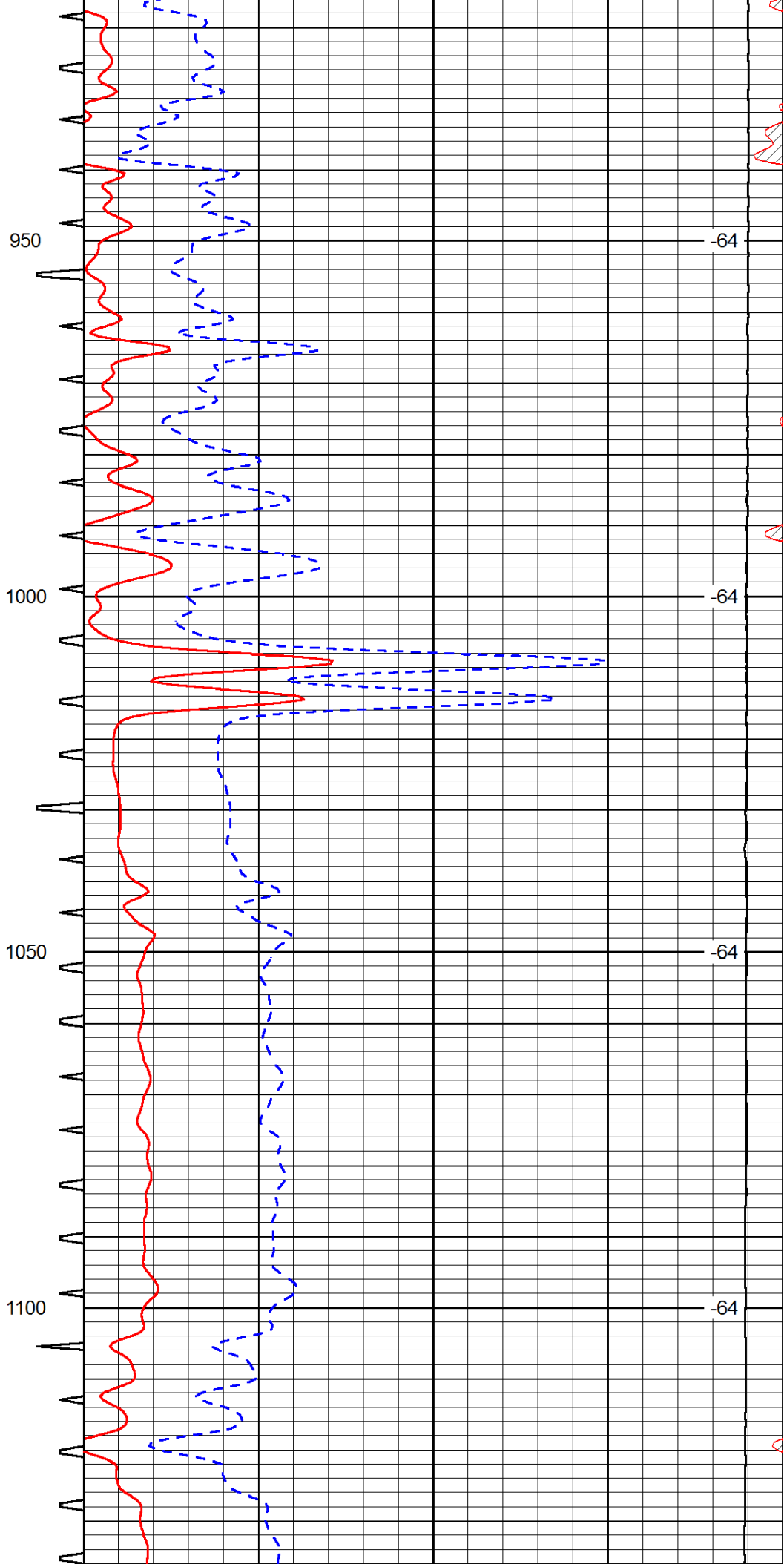
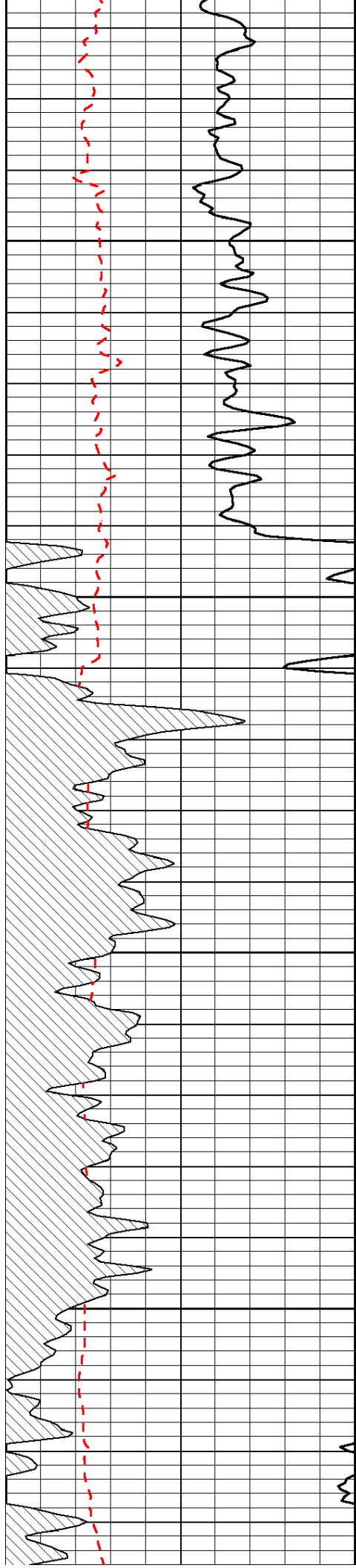
Atwood KS, 15 West to RD 5,
 1 North, 3/4 East, North Into

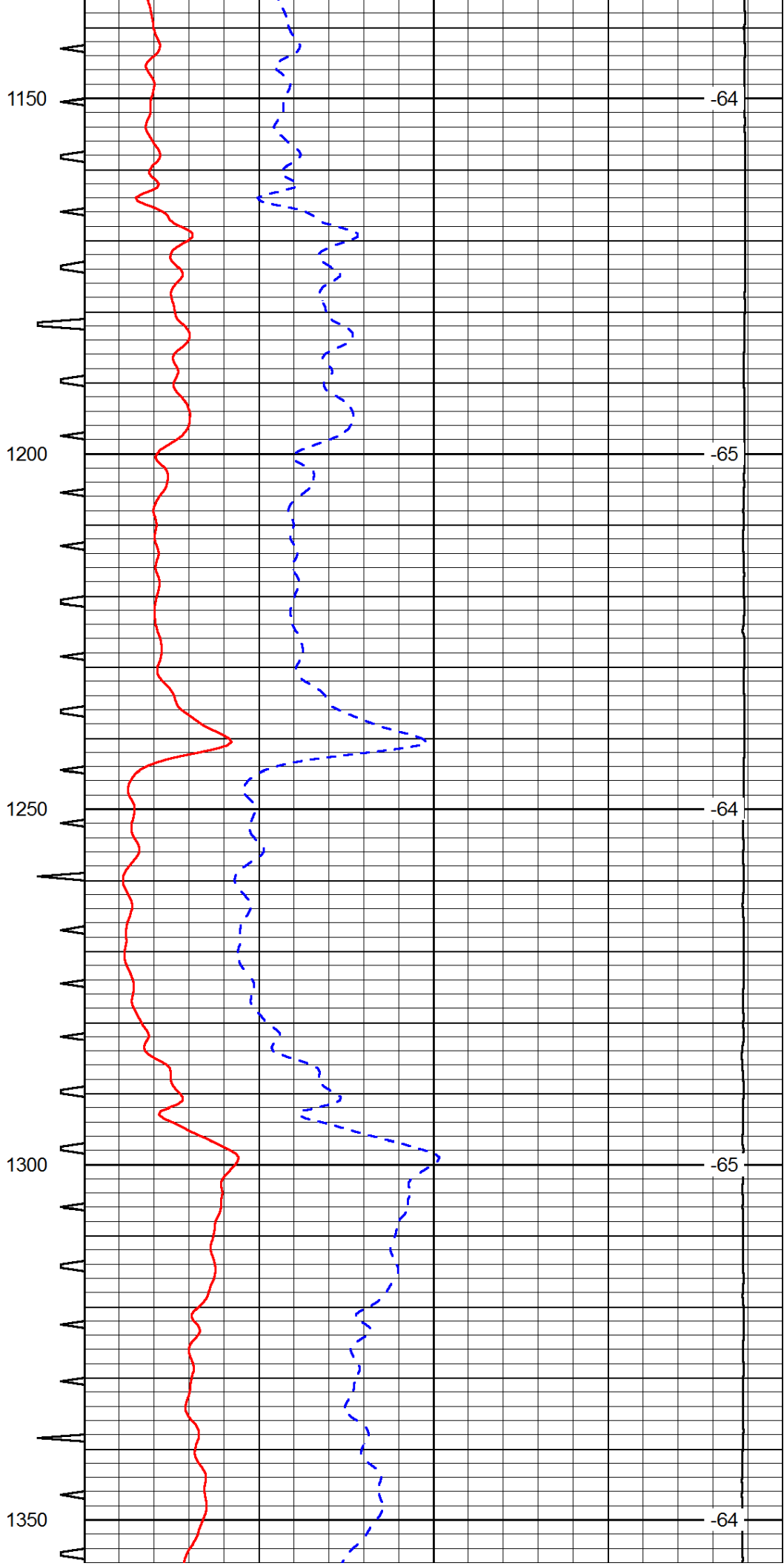
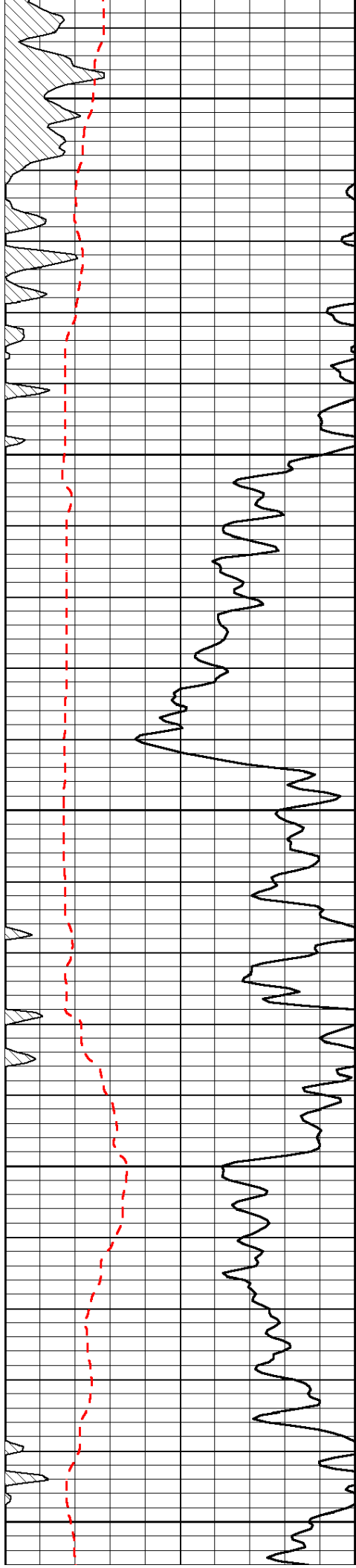
0	Gamma Ray	150	Sonic Int	140	Delta Time (usec/ft)	40
150	Gamma Ray	300	5	0	SPOR	-10
6	Caliper (GAPI)	16		15000	LTEN (lb)	0
						LSPD

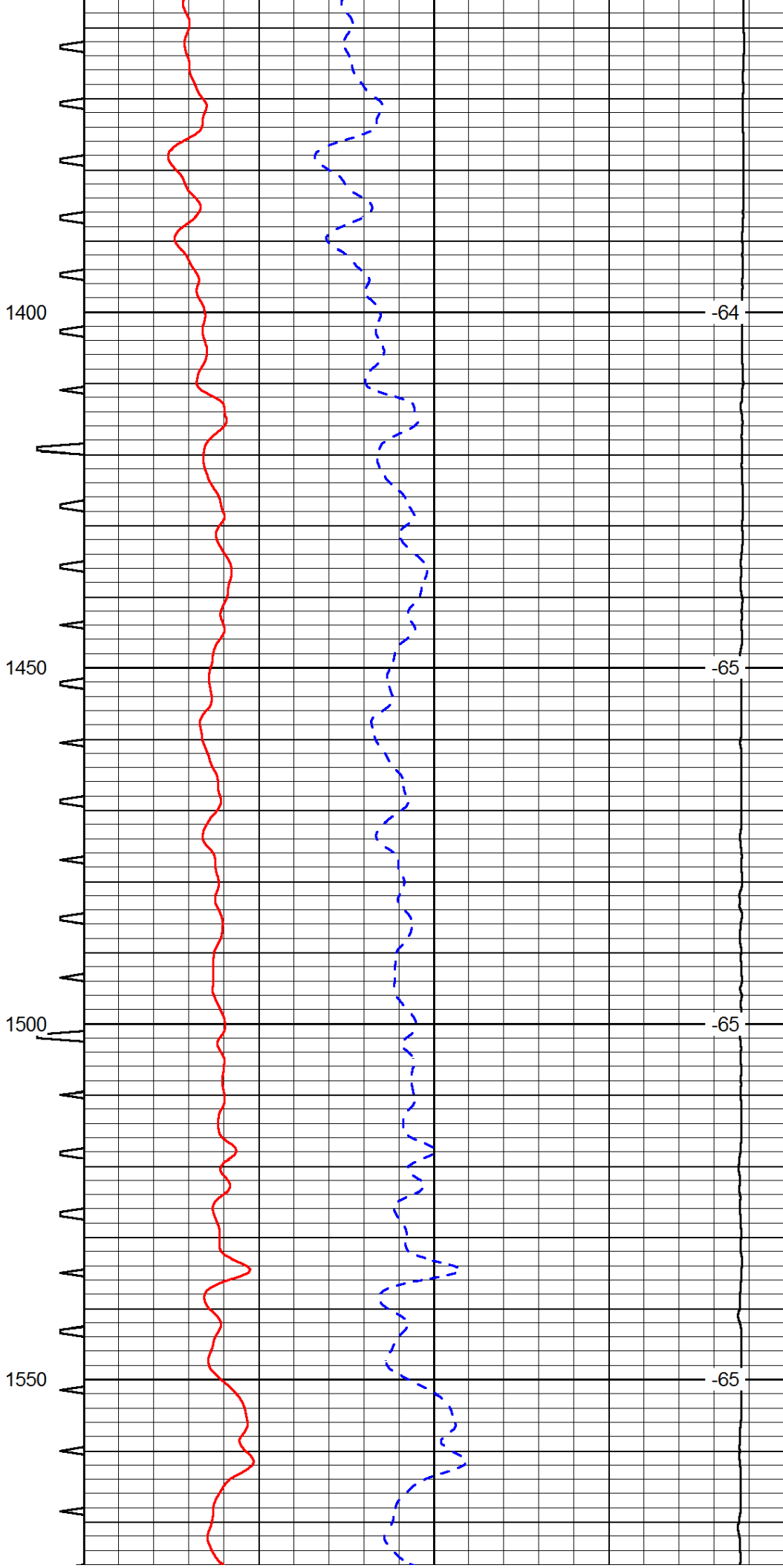
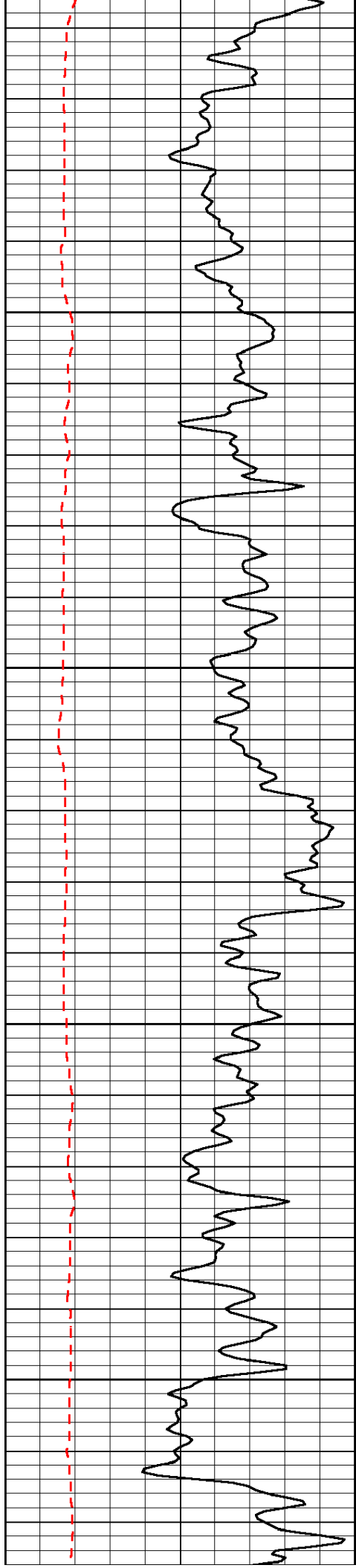


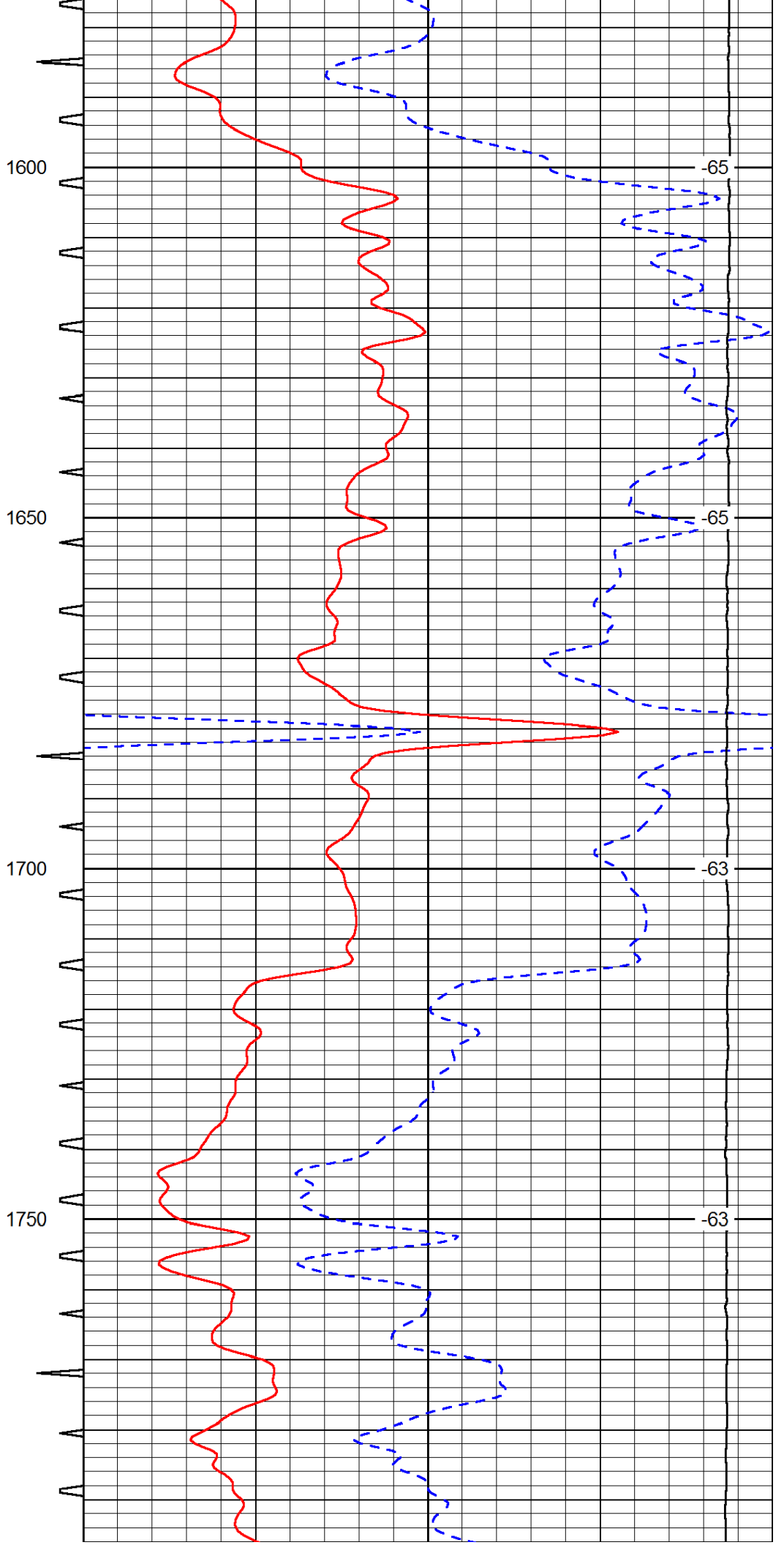
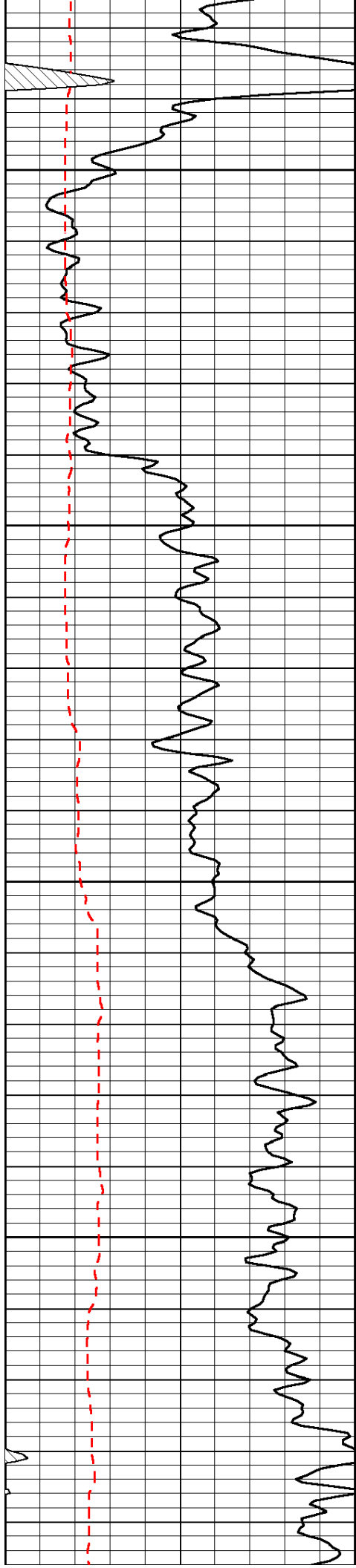


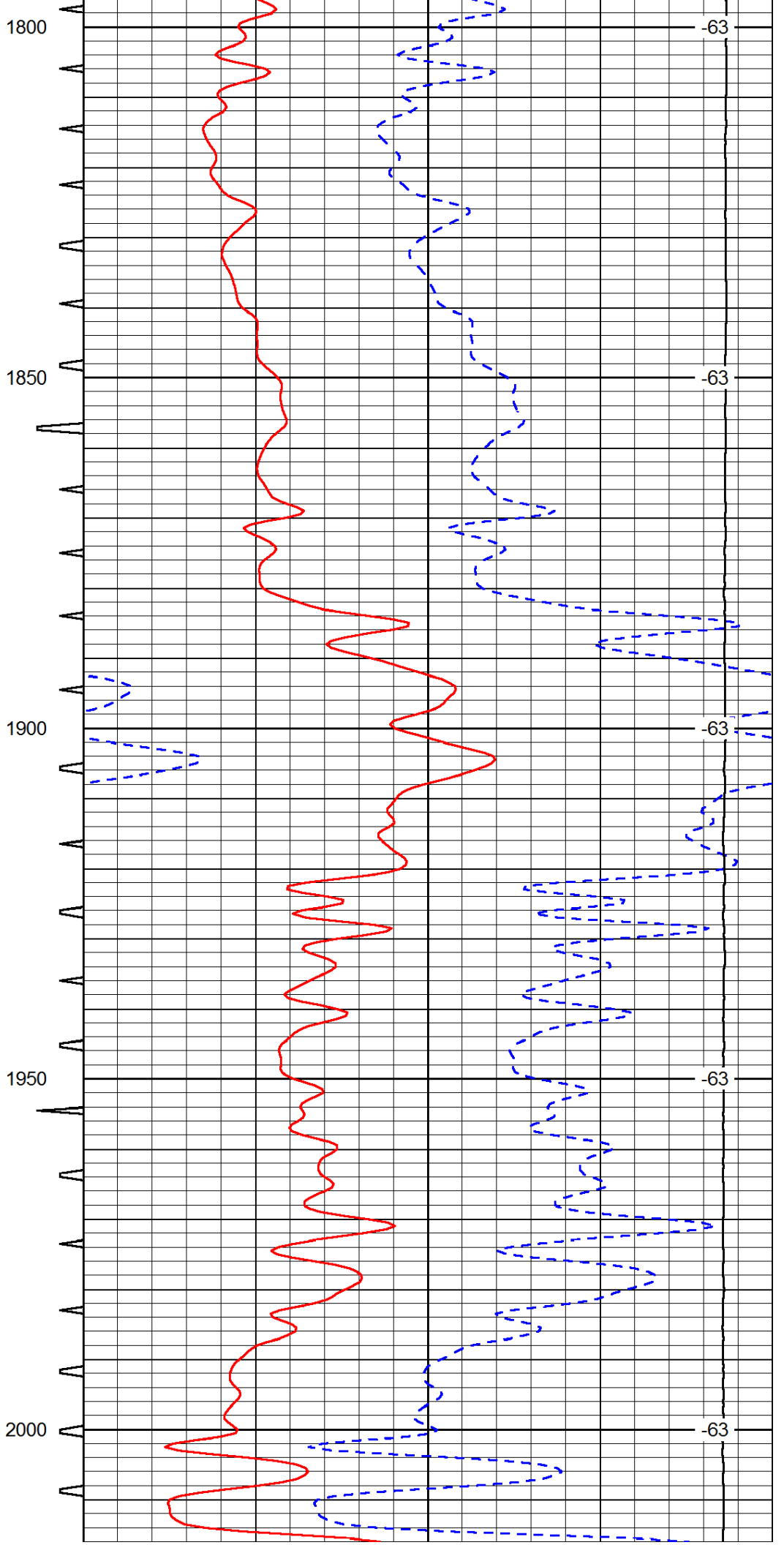
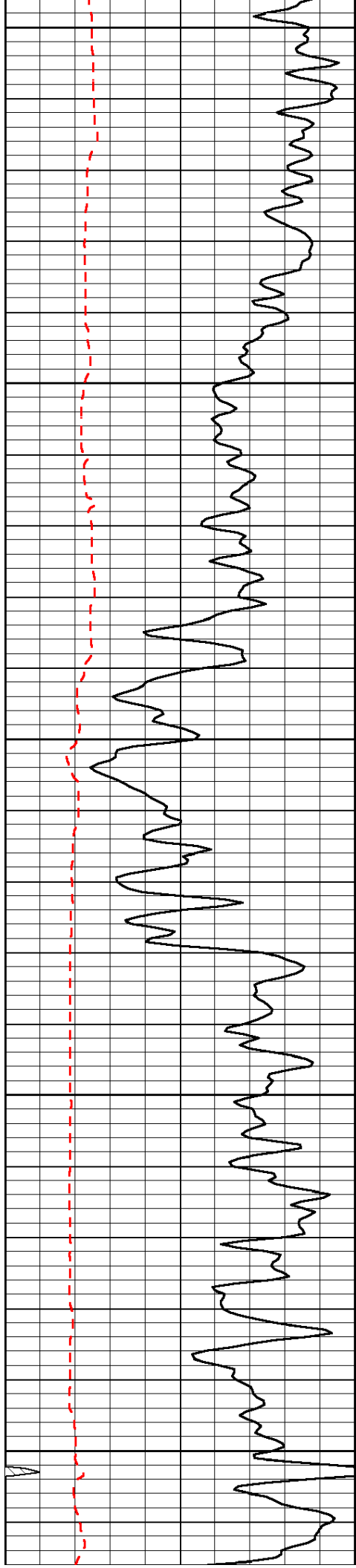


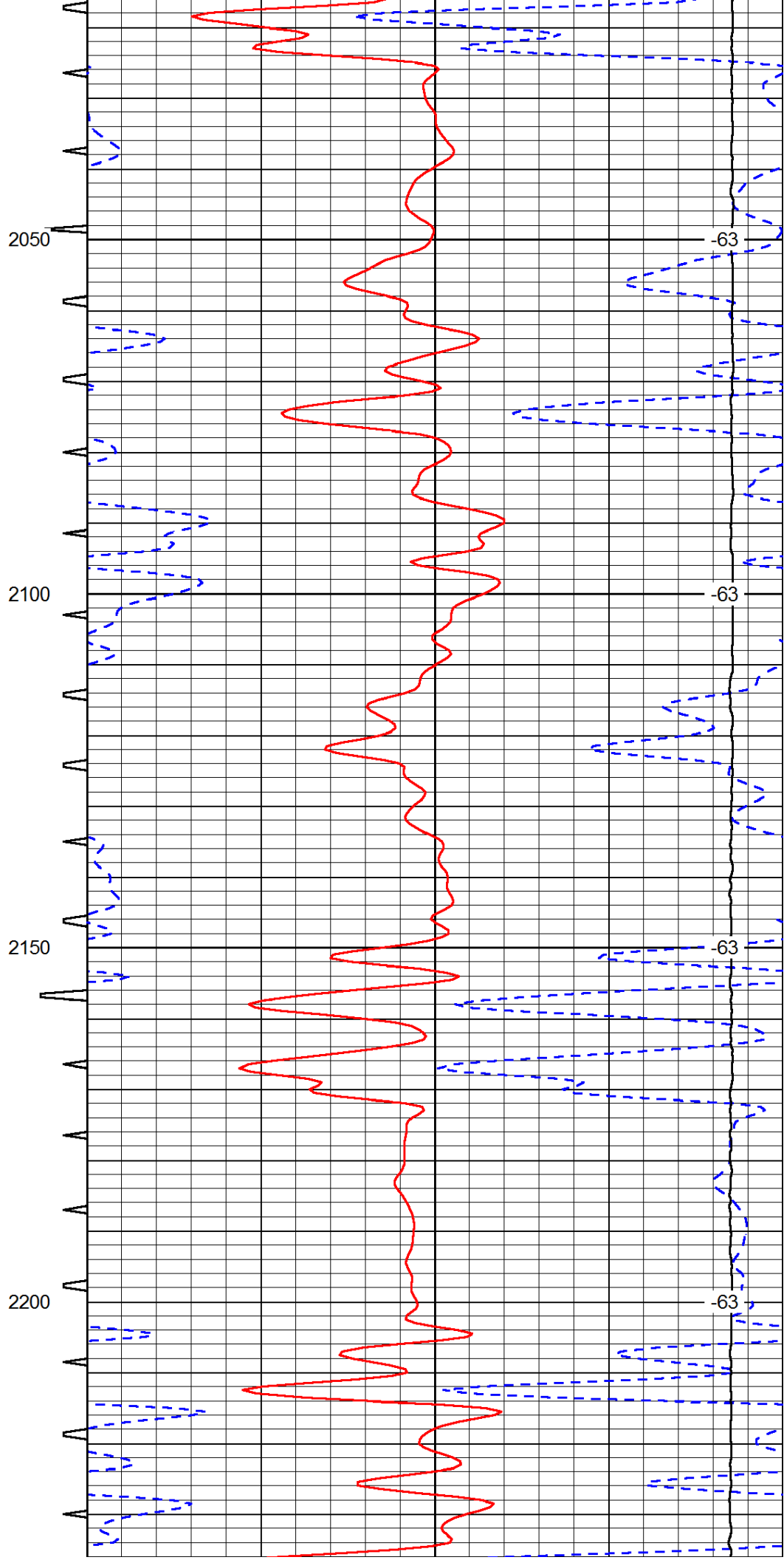
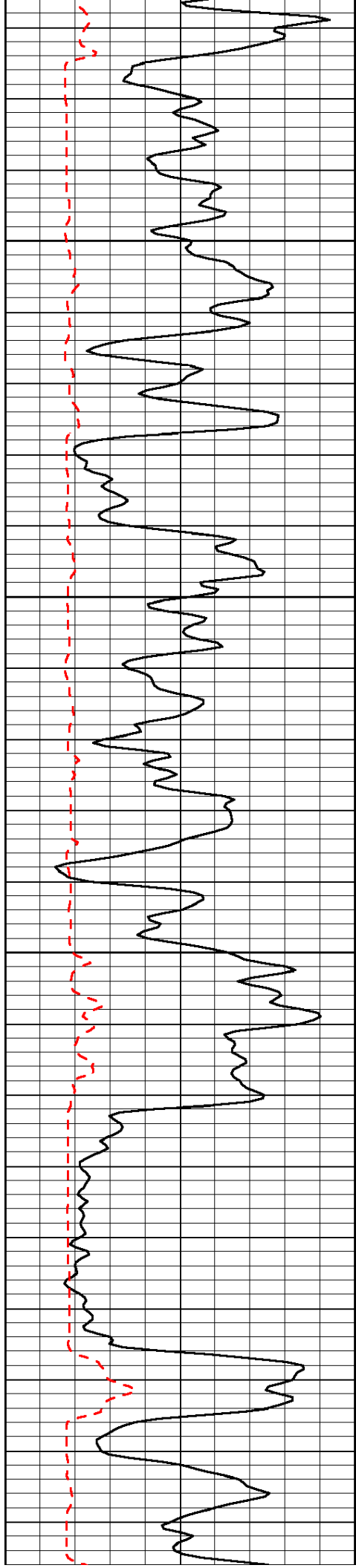


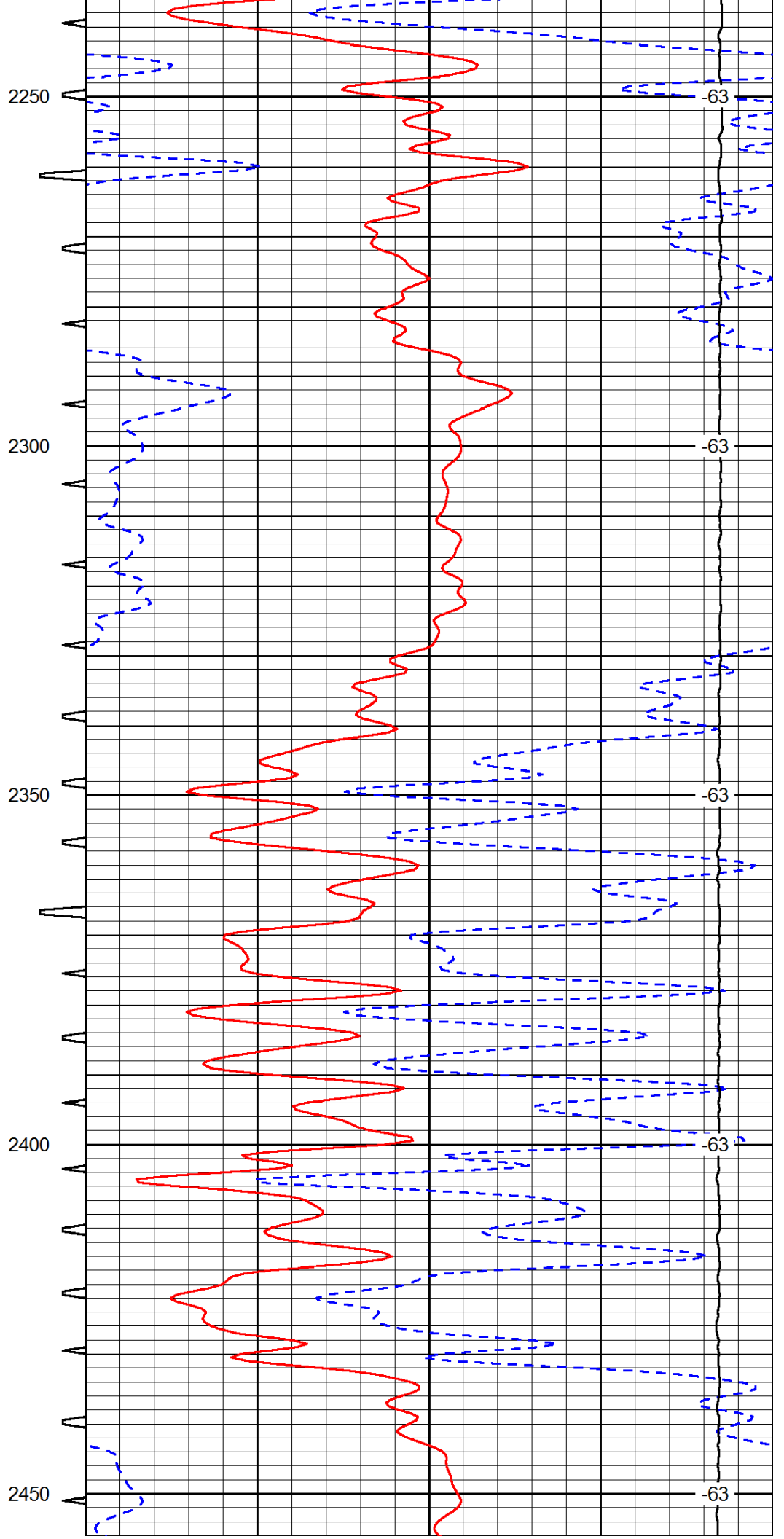
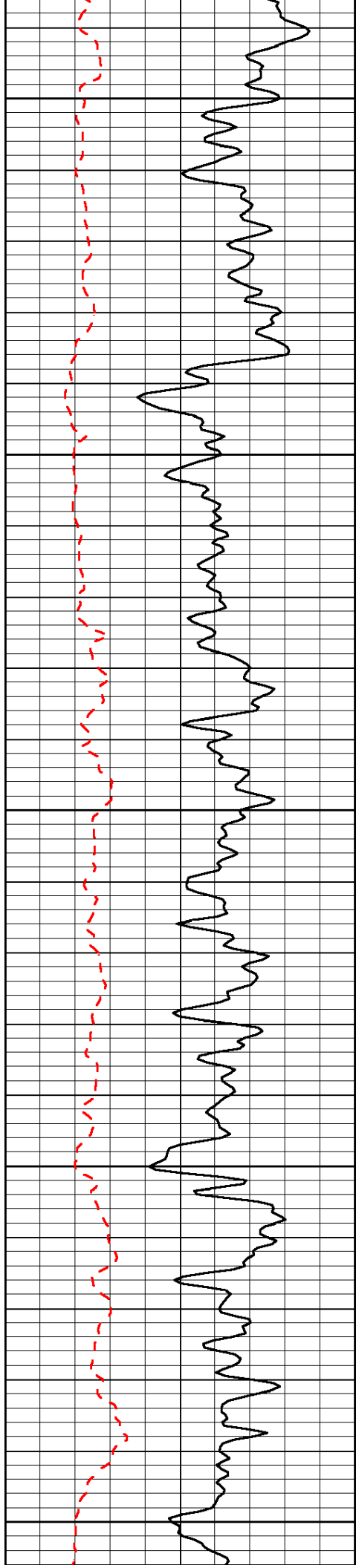


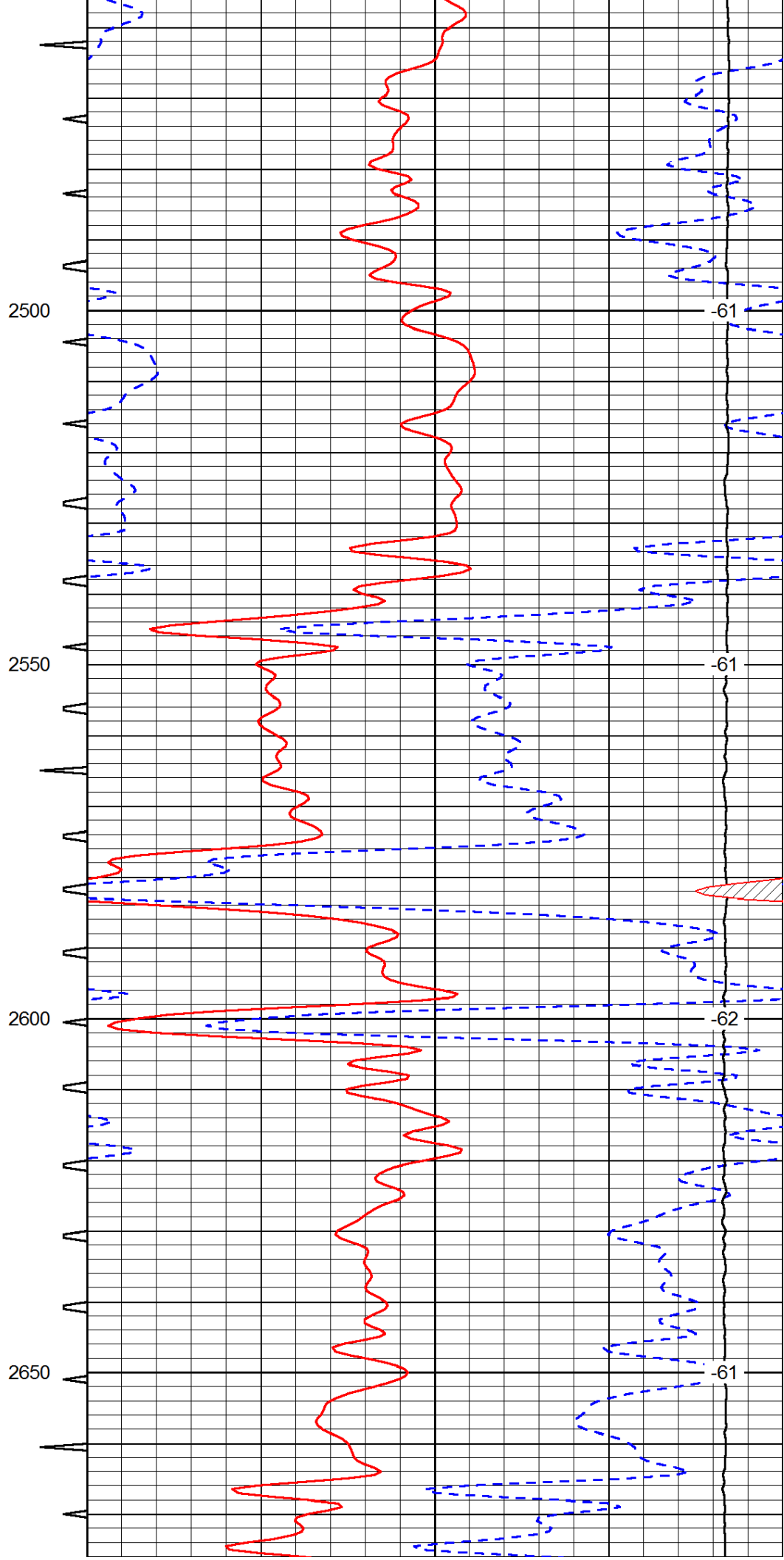
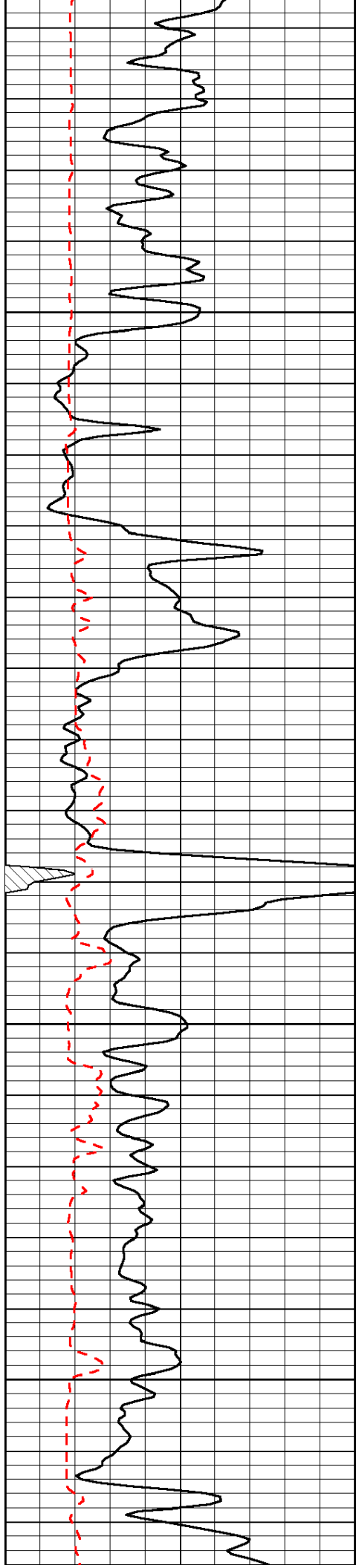


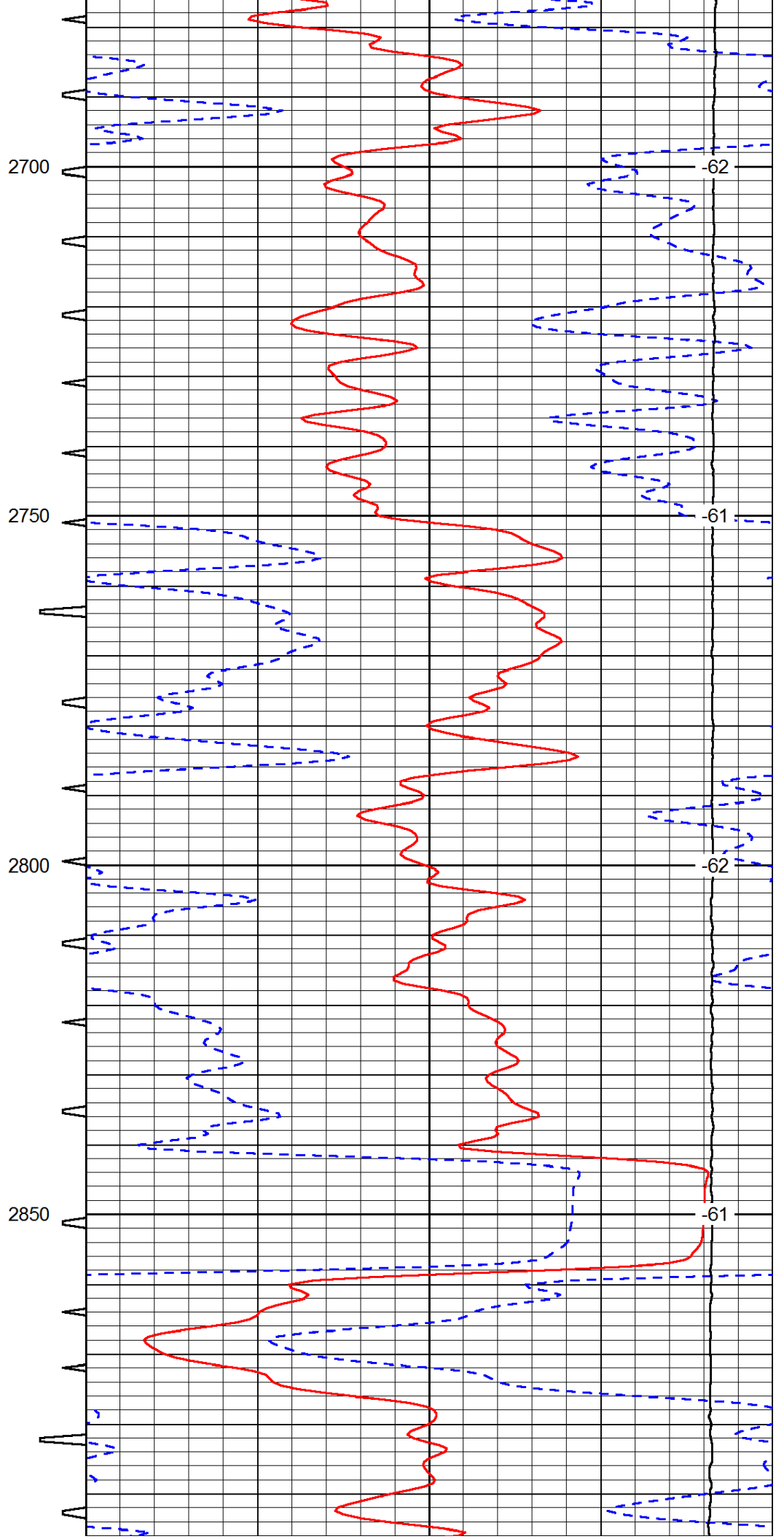
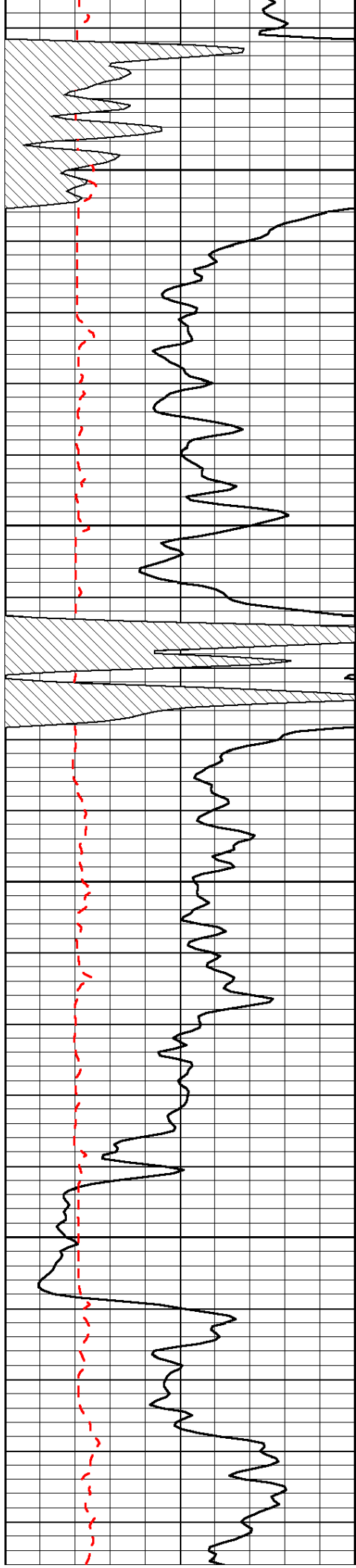


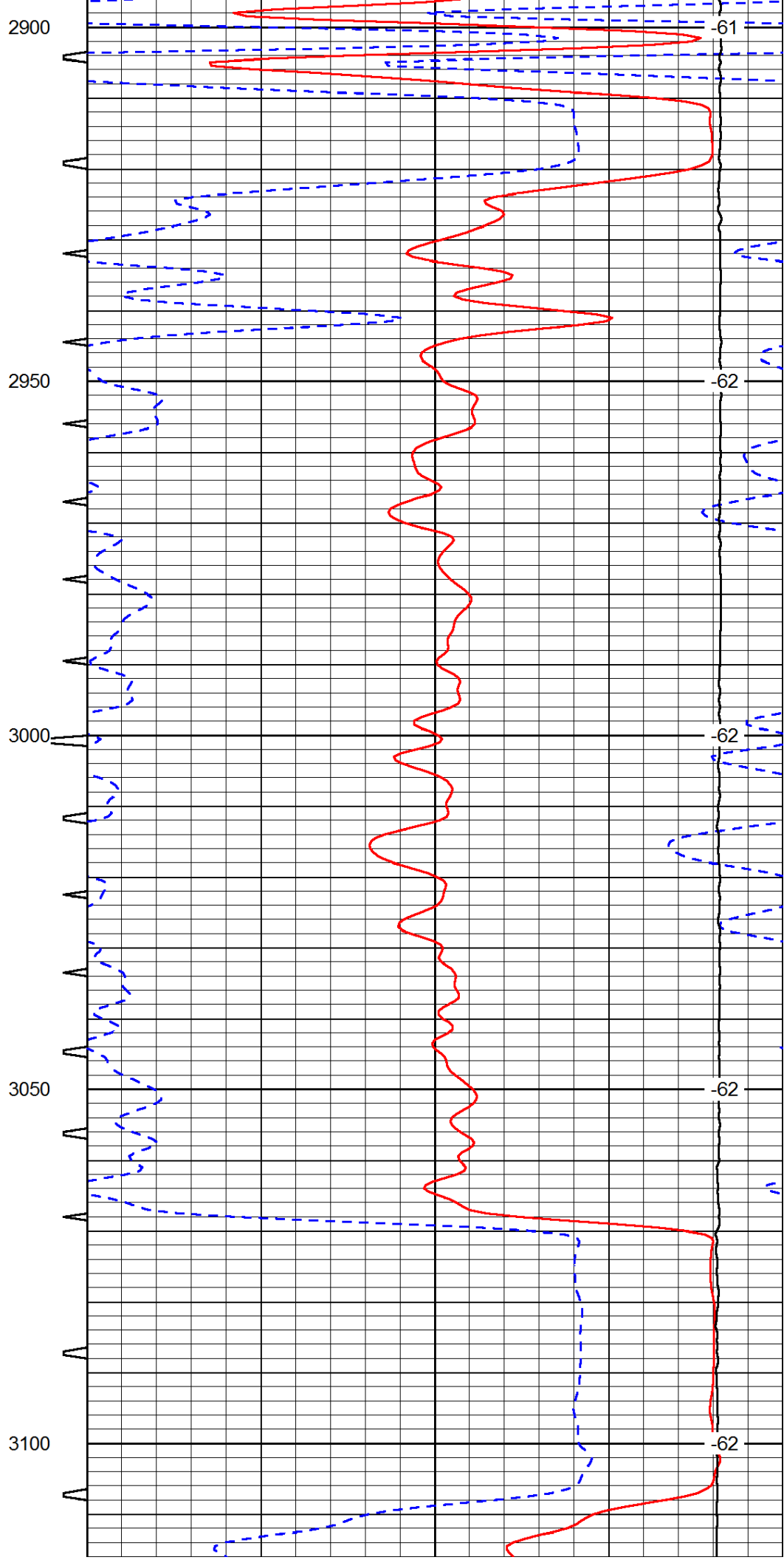
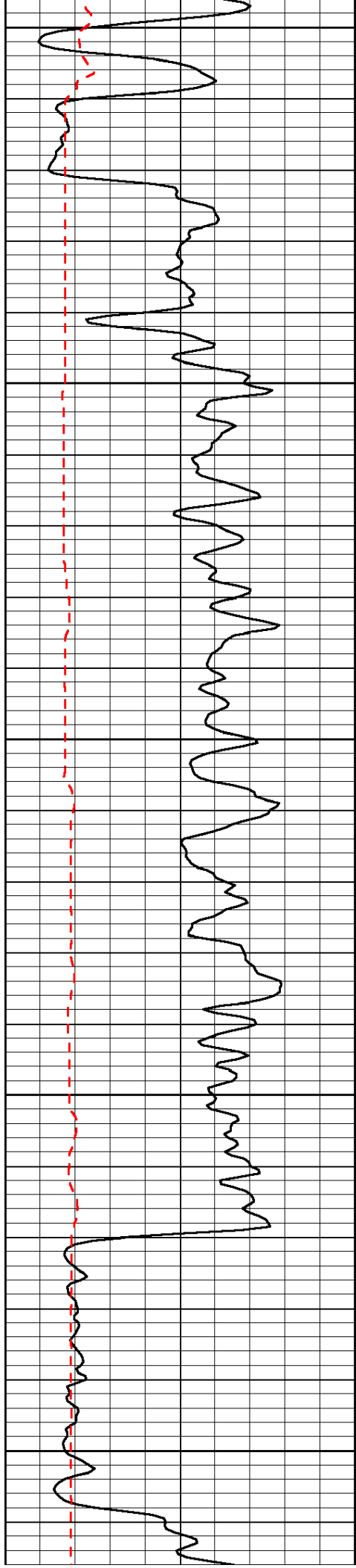


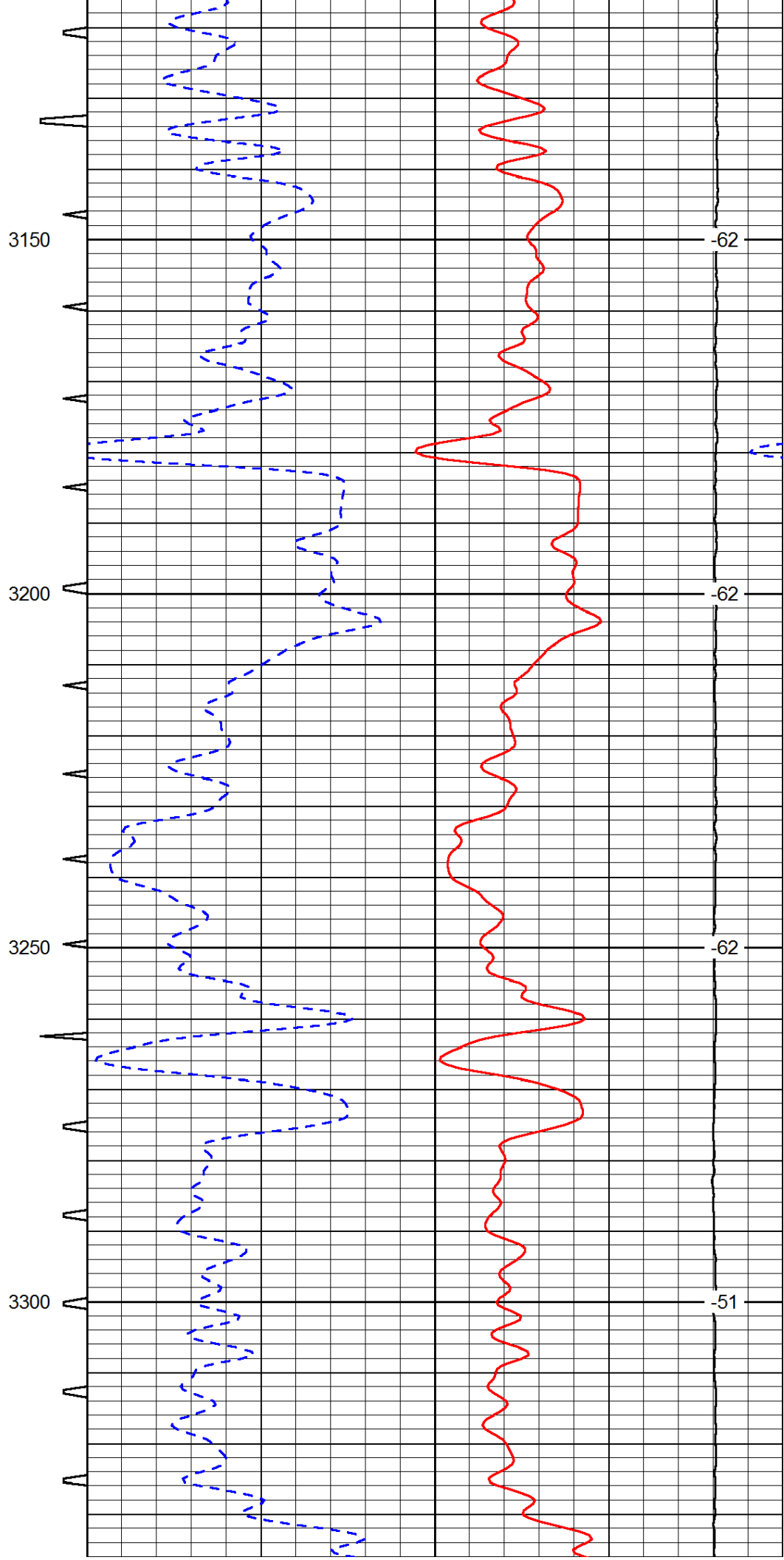
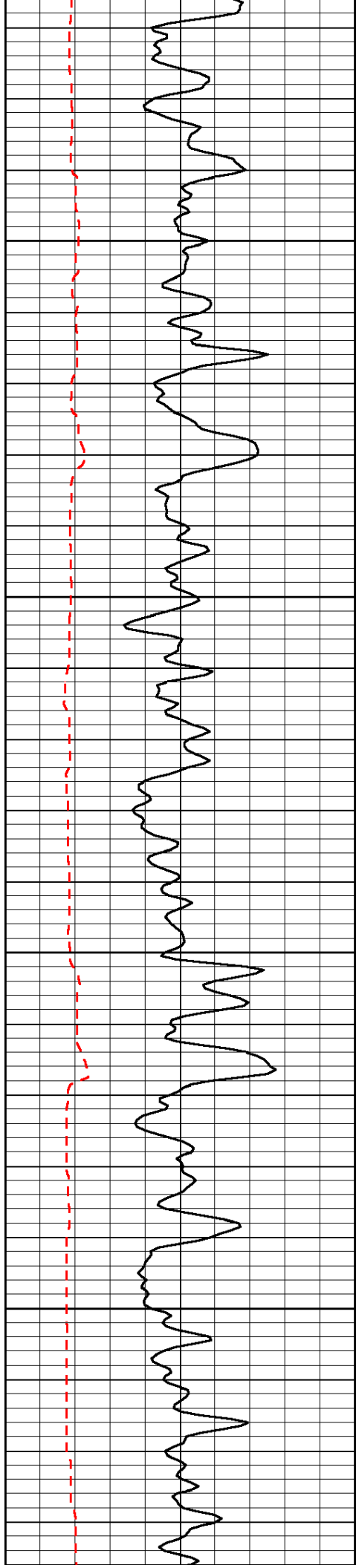


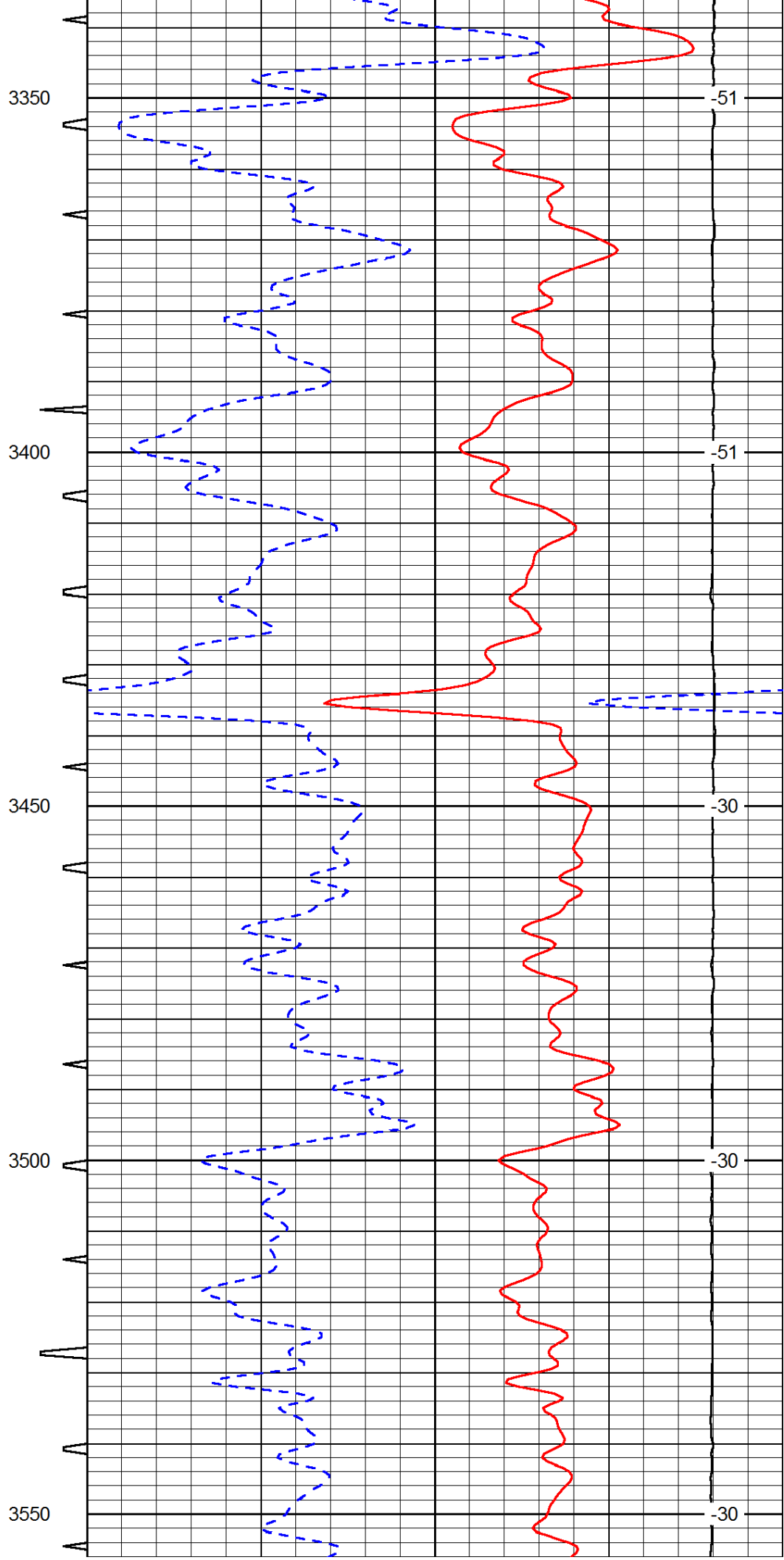
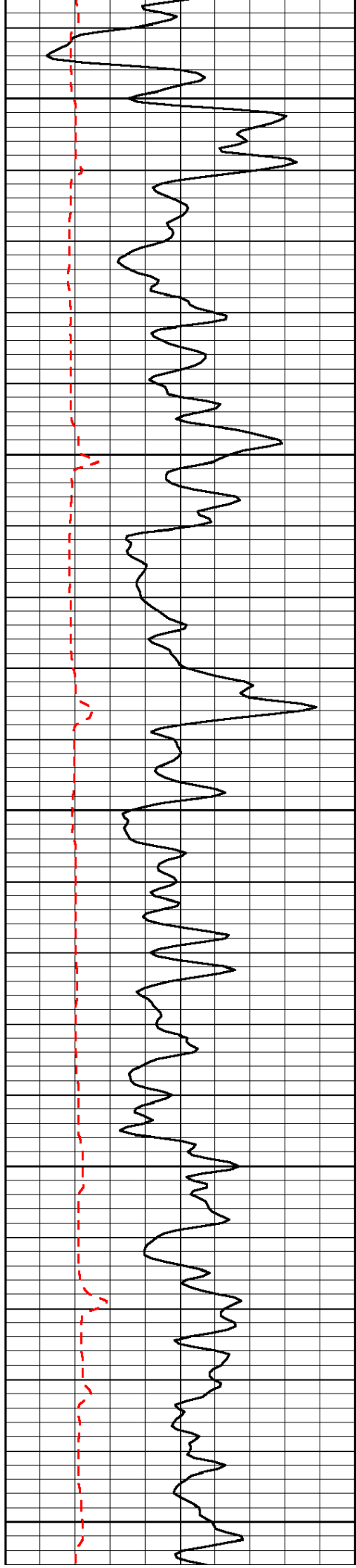


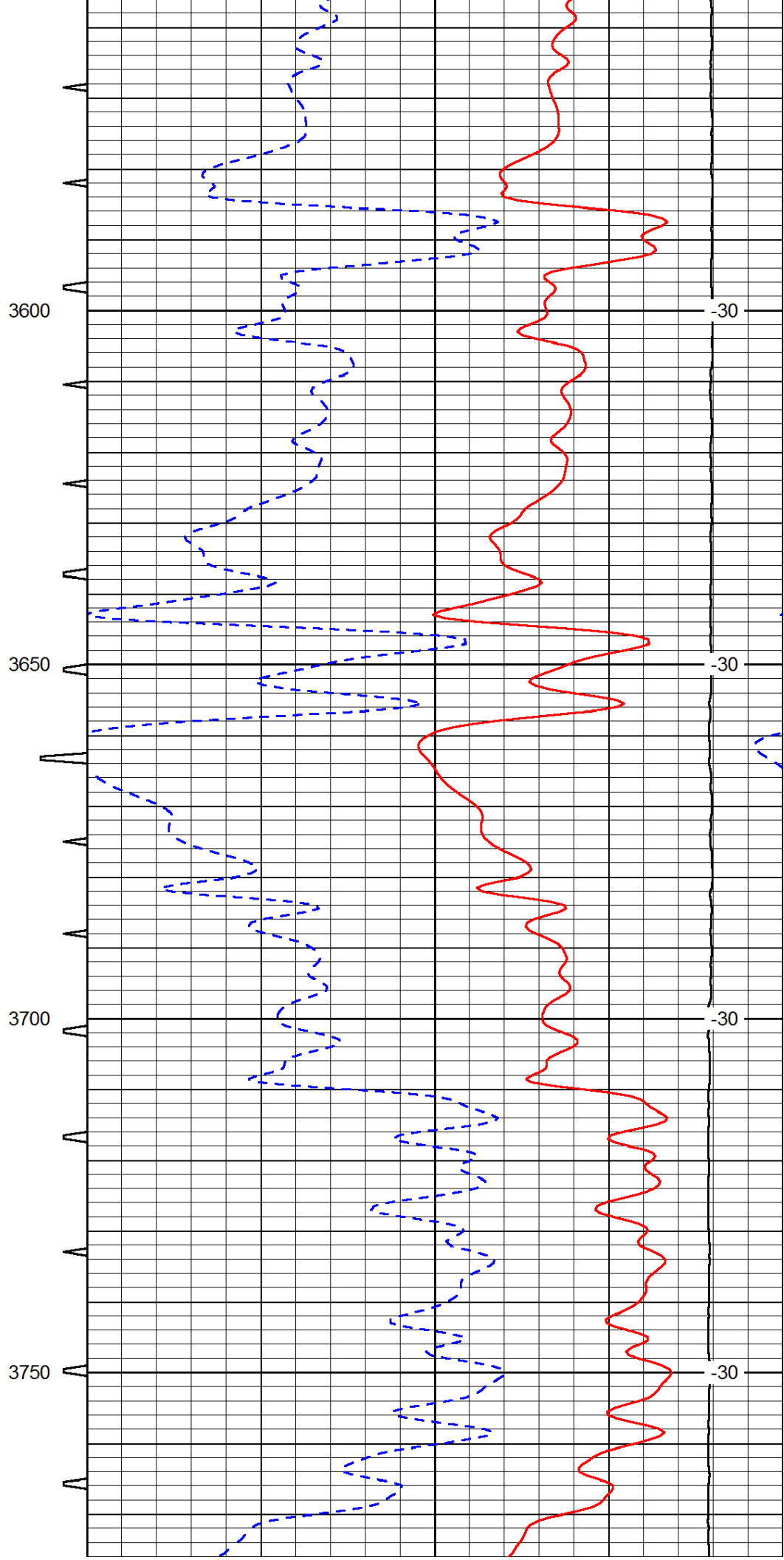
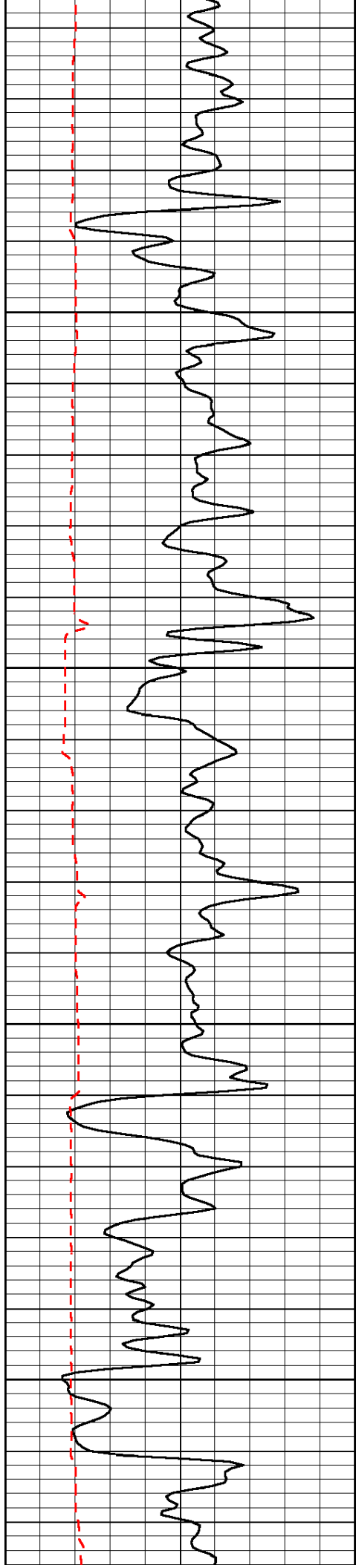


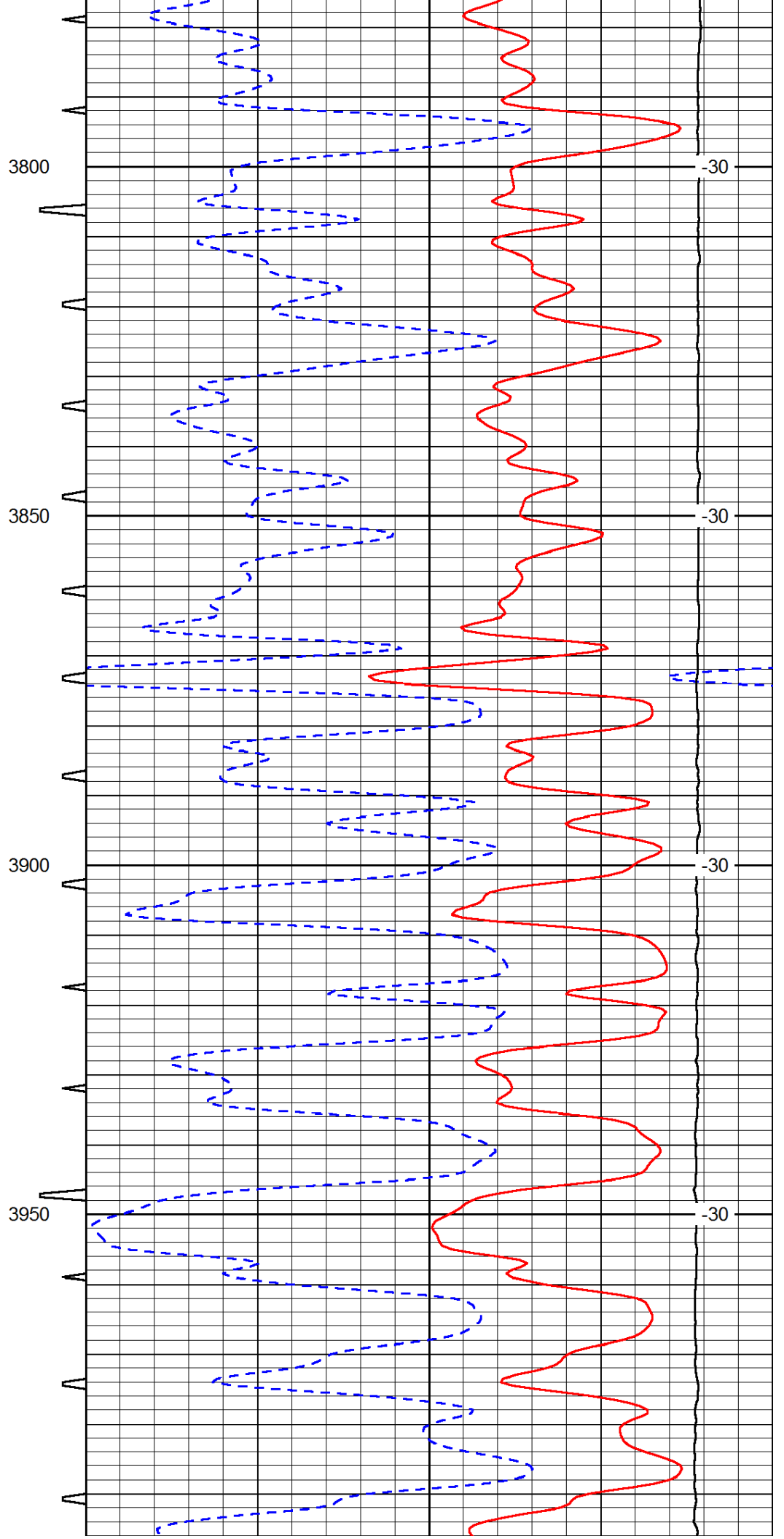
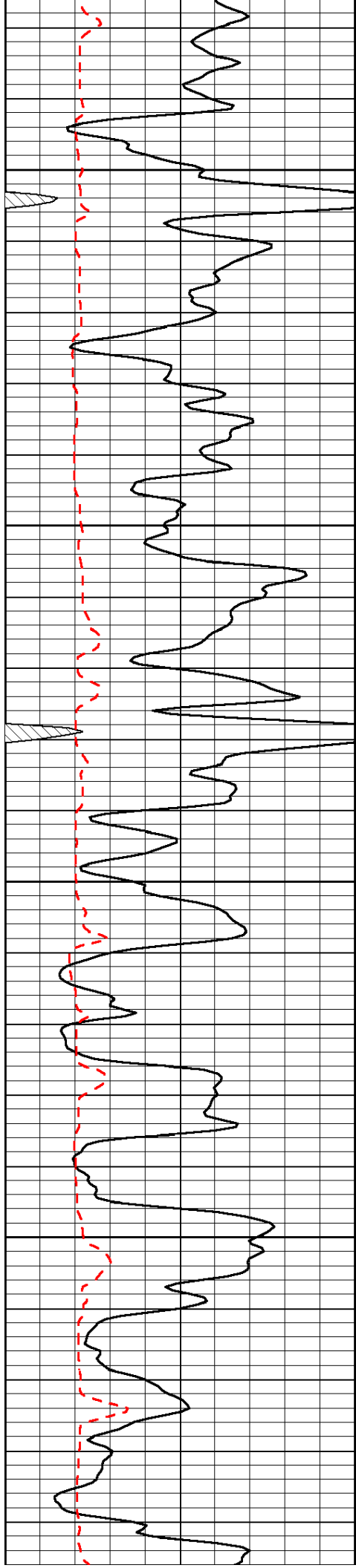


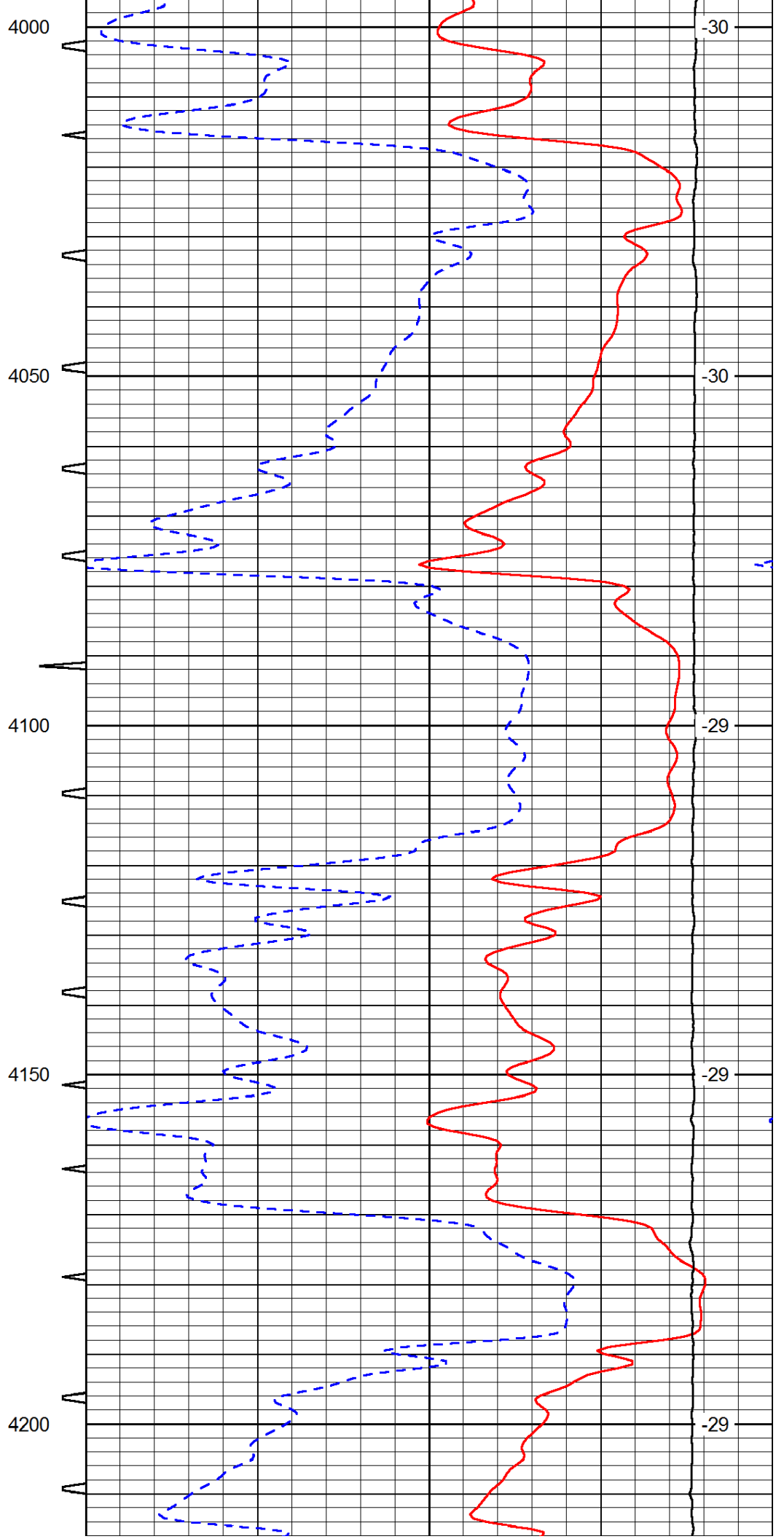
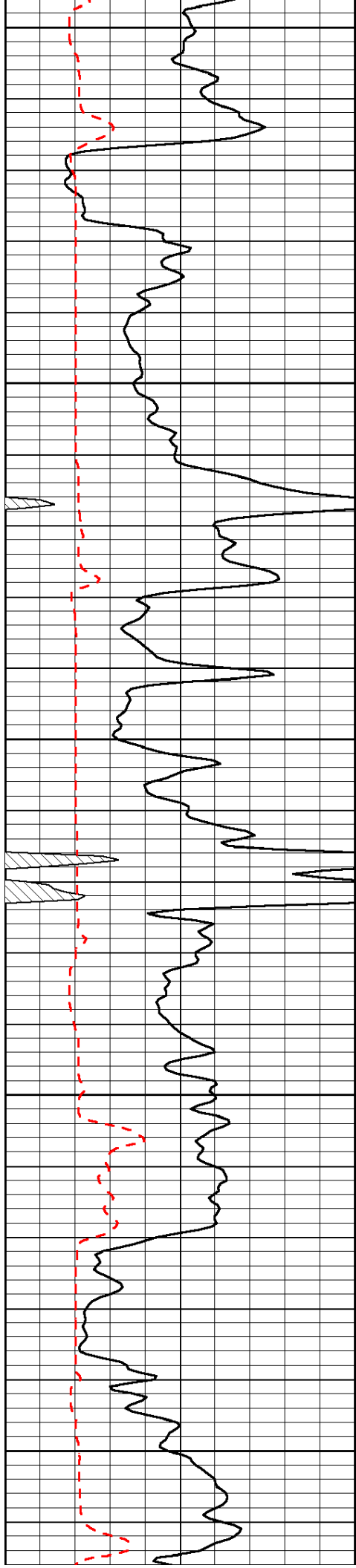


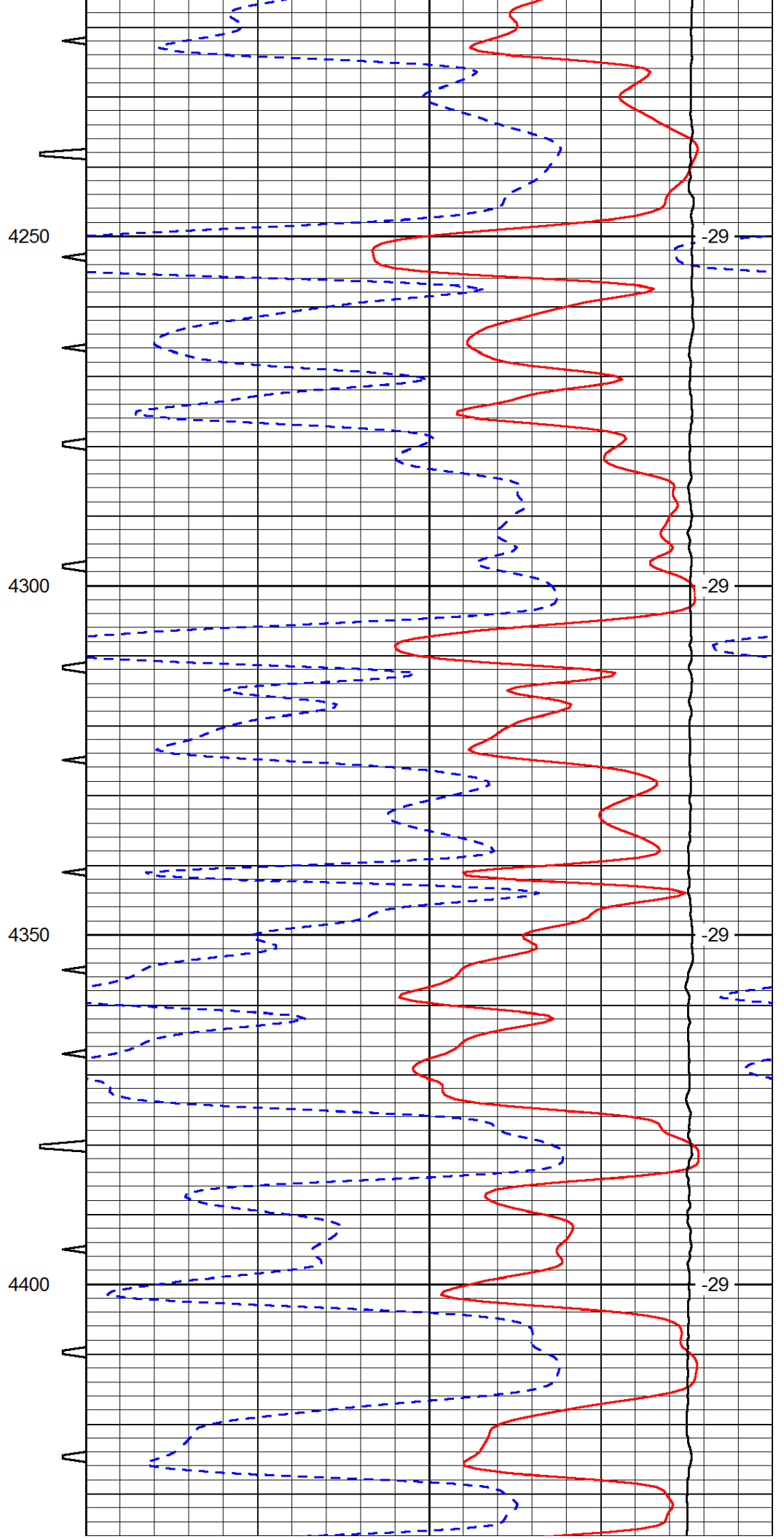
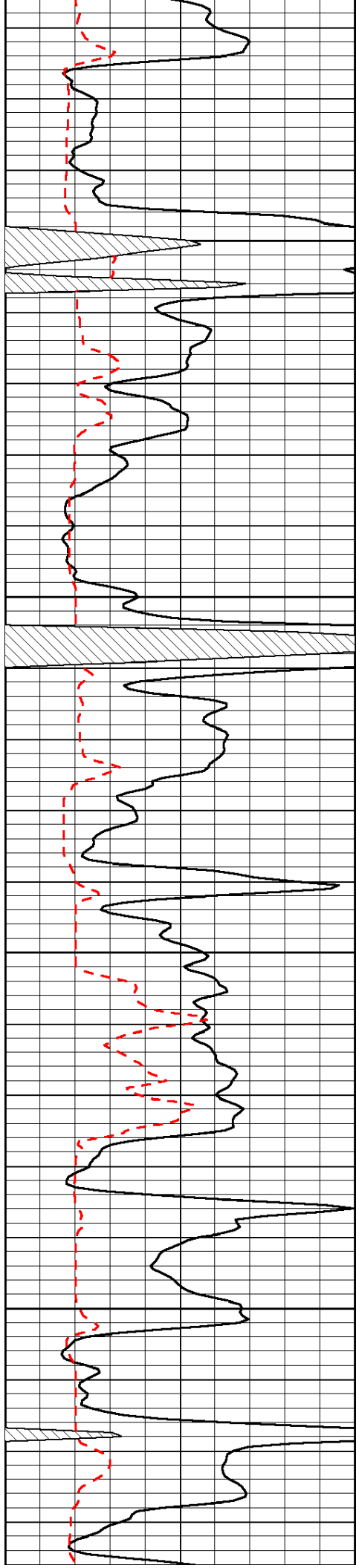


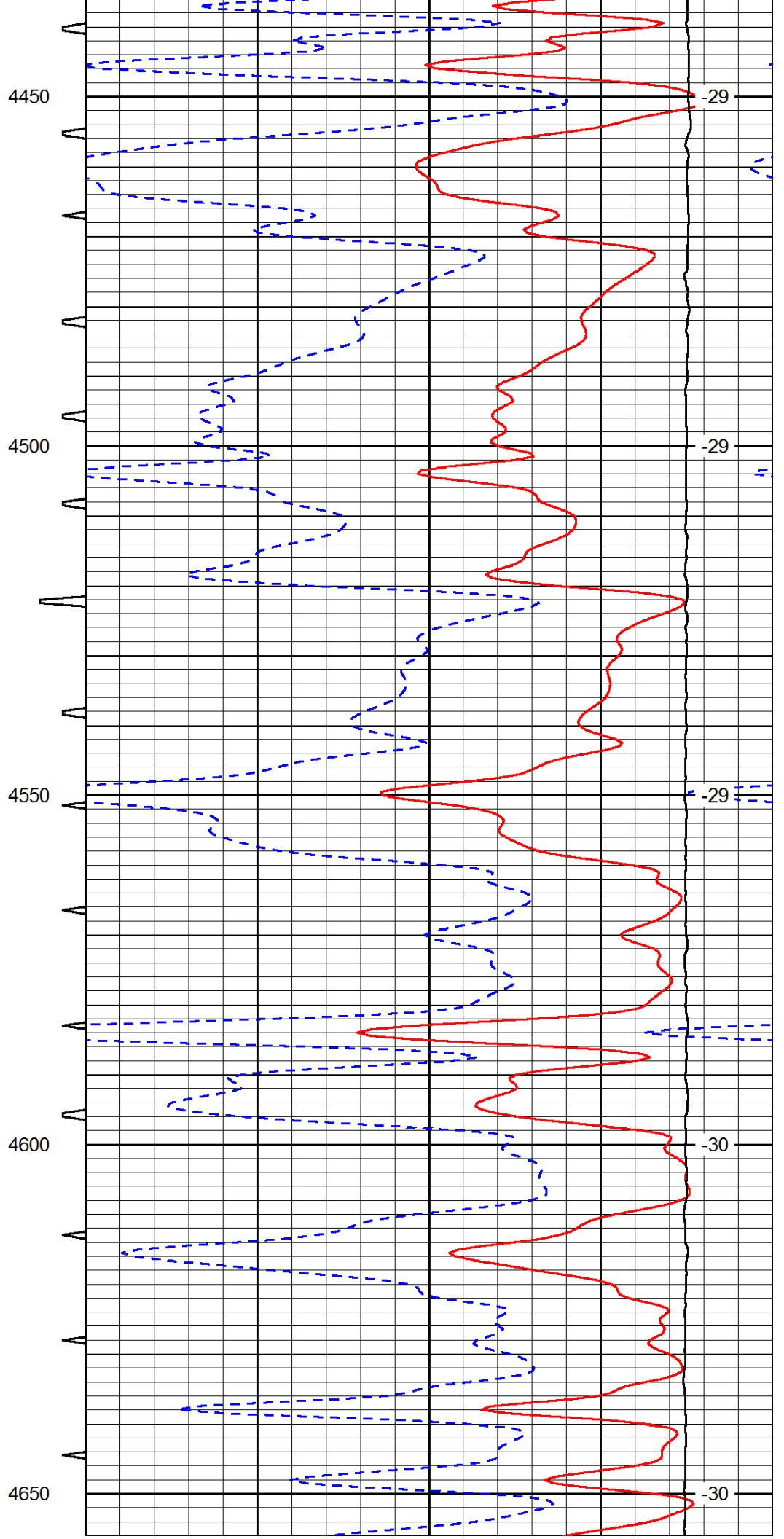
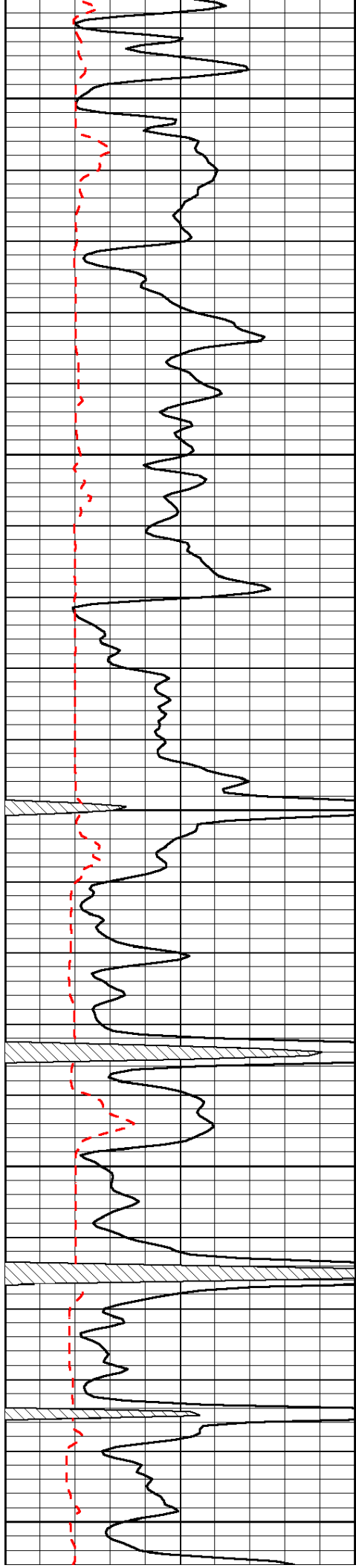


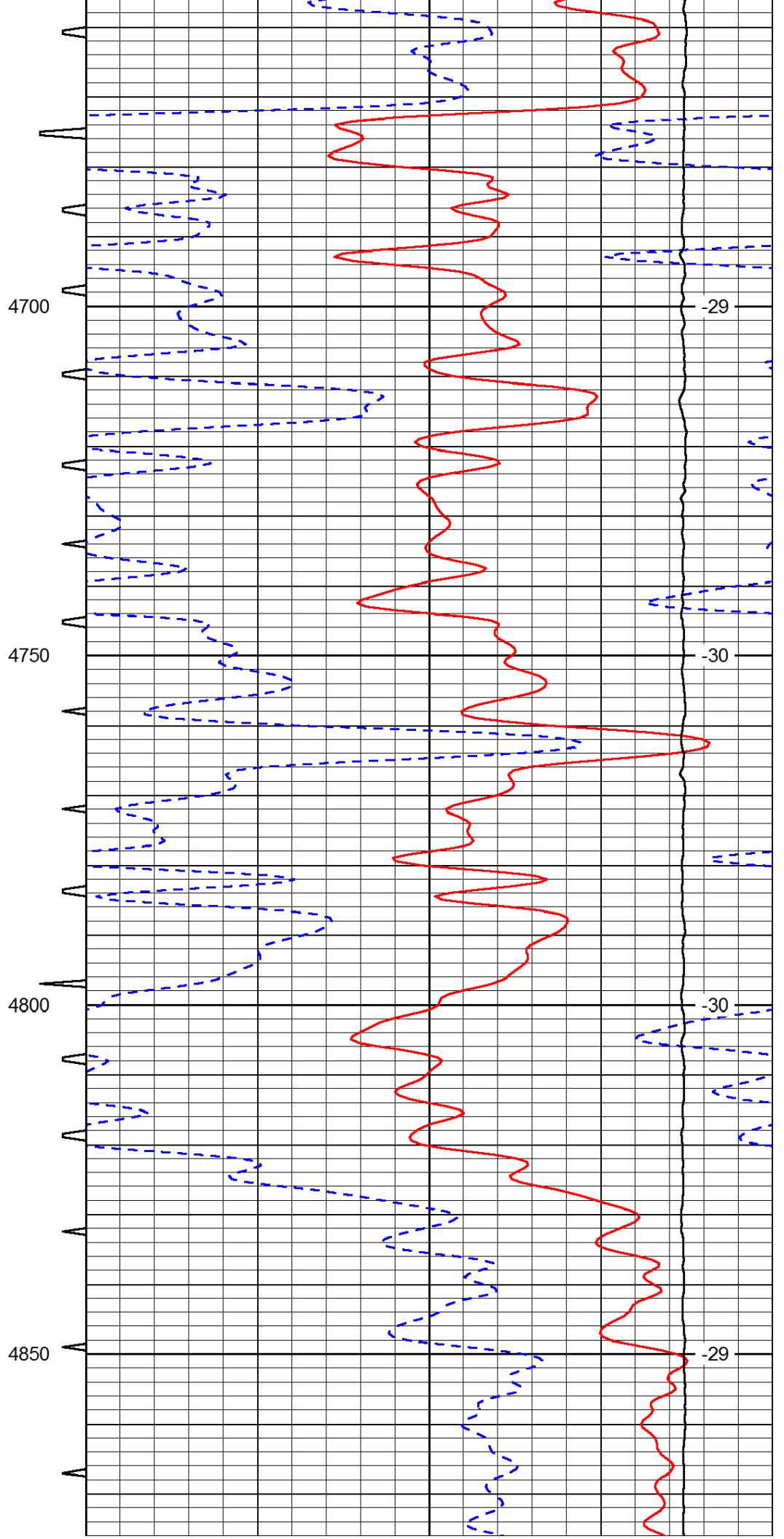
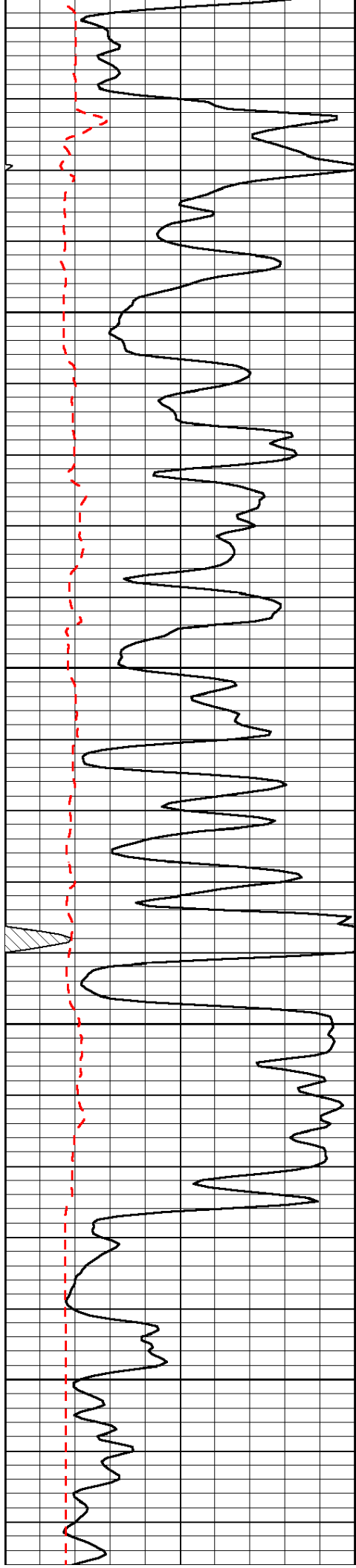


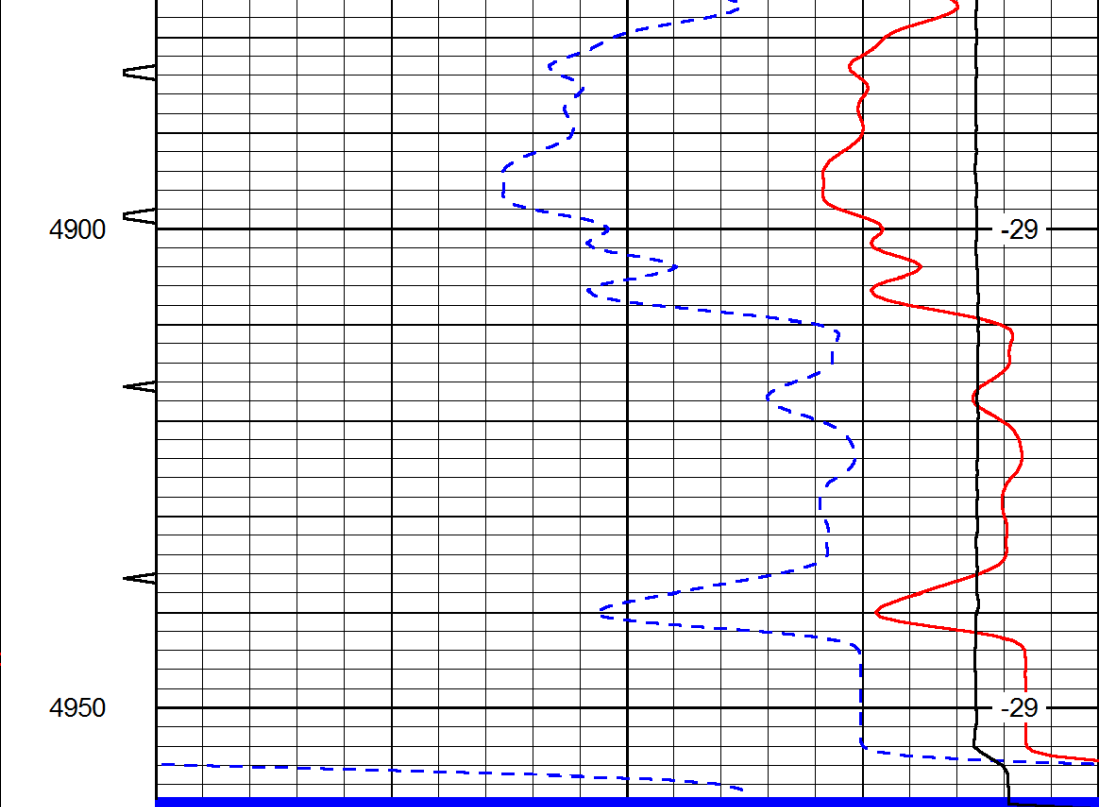
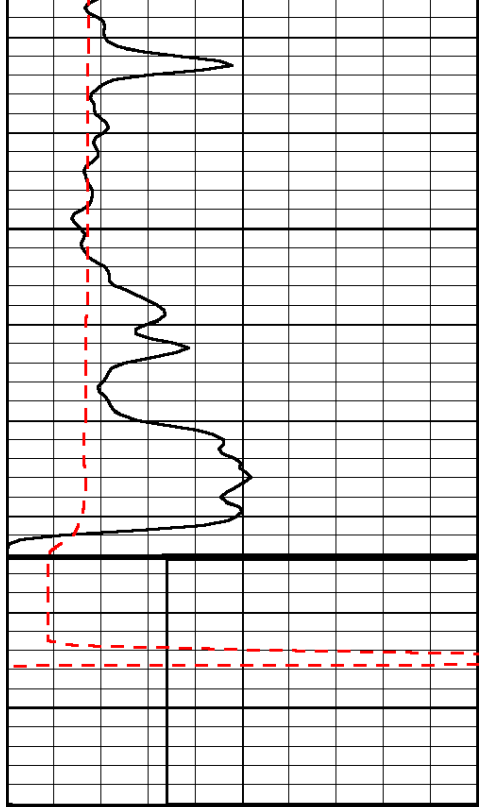












0	Gamma Ray	150	Sonic Int	140	Delta Time (usec/ft)	40
150	Gamma Ray	300	5	0	SPOR	-10
6	Caliper (GAPI)	16		15000	LTEN (lb)	0
LSPD						