



Pioneer Energy Services

Microresistivity Log

15-153-20,906-00-00

API No.

Company **Murfin Drilling Company, Inc**
 Well **Sramek # 'B' 1-11**
 Field **Wildcat**
 County **Rawlins** State **Kansas**

Location
 NW NE NE SW
 2405' FSL & 2000' FWL

Sec: 11 Twp: 3 S Rge: 36 W

Other Services
 CNL/CDL
 DIL/BHCS

Elevation

K.B. 3252
 D.F. 3242
 G.L. 3242

Permanent Datum Ground Level Elevation 3242
 Log Measured From Kelly Bushing 10 Ft. Above Perm. Datum
 Drilling Measured From Kelly Bushing

Date	9/9/2012	
Run Number	Two	
Depth Driller	4950	
Depth Logger	4954	
Bottom Logged Interval	4953	
Top Log Interval	3450	
Casing Driller	8.625 @ 302	
Casing Logger	302	
Bit Size	7.875	
Type Fluid in Hole	Chemical	
Salinity, ppm CL	1000	
Density / Viscosity	9.3 69	
pH / Fluid Loss	6.4 10.5	
Source of Sample	Flowline	
Rm @ Meas. Temp	1.20 @ 80	
Rmf @ Meas. Temp	.90 @ 80	
Rmc @ Meas. Temp	1.62 @ 80	
Source of Rmf / Rmc	Charts	
Rm @ BHT	.75 @ 126	
Operating Rig Time	5 Hours	
Max Rec. Temp. F	126	
Equipment Number	108	
Location	Hays	
Recorded By	D. Kerr	
Witnessed By	Wes Hansen	

<<< Fold Here >>>

All interpretations are opinions based on inferences from electrical or other measurements and we cannot and do not guarantee the accuracy or correctness of any interpretation, and we shall not, except in the case of gross or willful negligence on our part, be liable or responsible for any loss, costs, damages, or expenses incurred or sustained by anyone resulting from any interpretation made by any of our officers, agents or employees. These interpretations are also subject to our general terms and conditions set out in our current Price Schedule.

Comments

Thank you for using Pioneer Energy Services
www.pioneerenergy.com
 785 625 3858

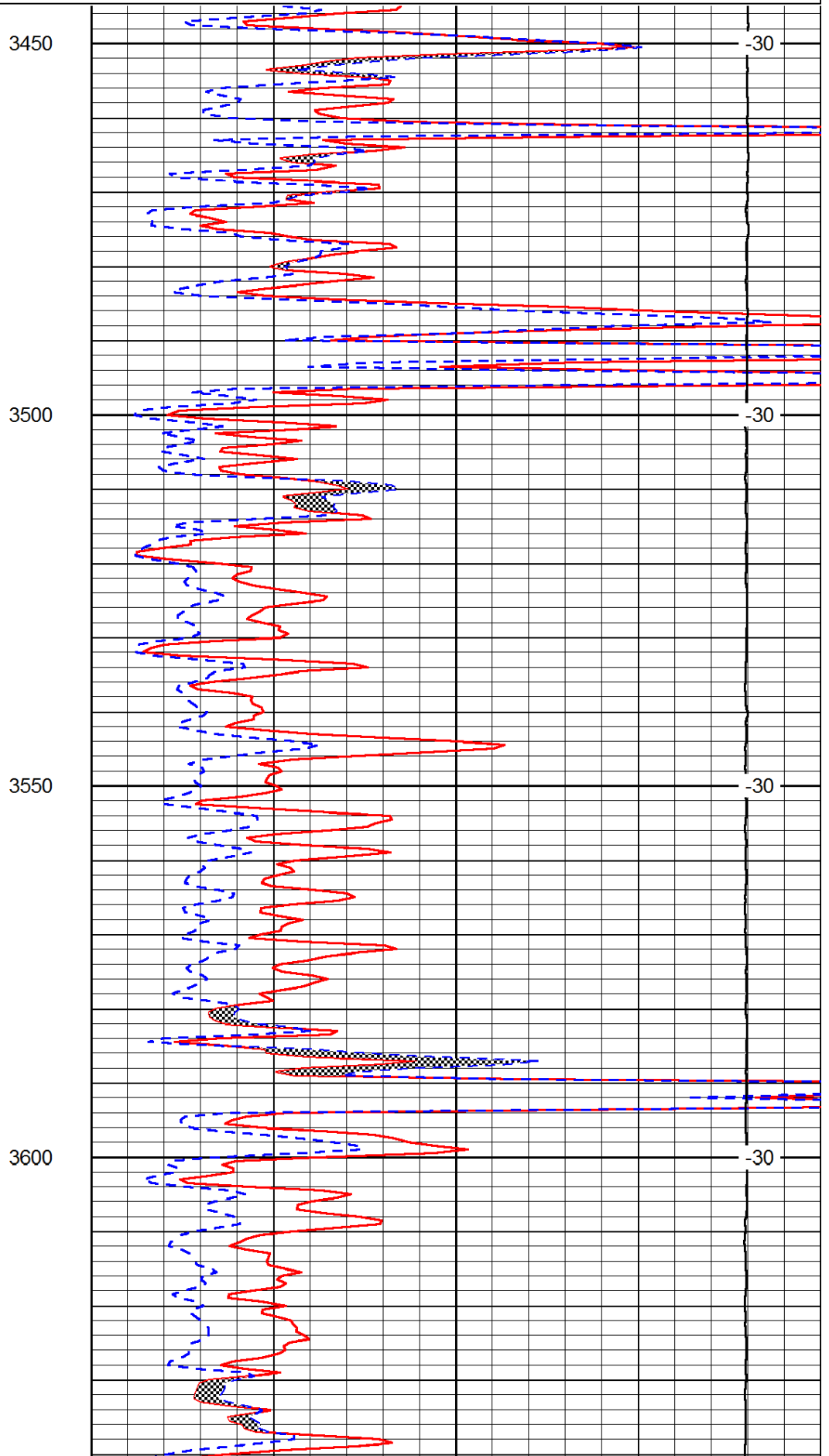
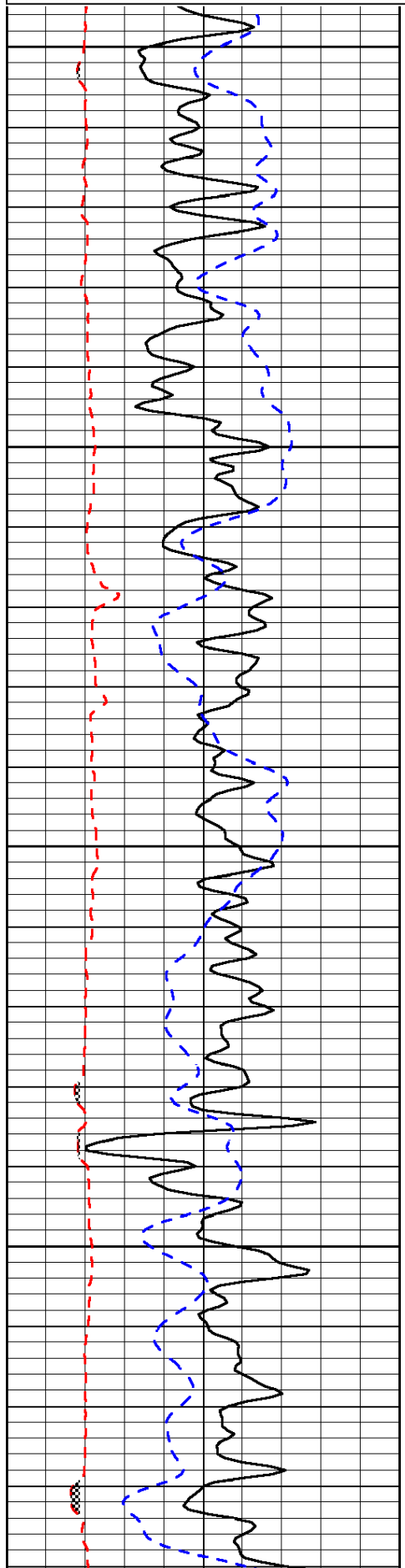
Atwood KS, 15 West to RD 5,
 1 North, 3/4 East, North Into

Database File: c:\warrior\data\murfin_sramek 'b' #1-11\murfin_sramek_1_11hd.db
 Dataset Pathname: DIL\murfstk
 Presentation Format: micro
 Dataset Creation: Sun Sep 09 19:10:42 2012
 Charted by: Depth in Feet scaled 1:240

0	Gamma Ray	150
6	Micro Log Caliper (GAPI)	16
-200	SP (mV)	0

0	Micro Inverse 1 X 1	40
0	Micro Normal 2"	40
15000	Line Weight	0

LSPD



3450

-30

3500

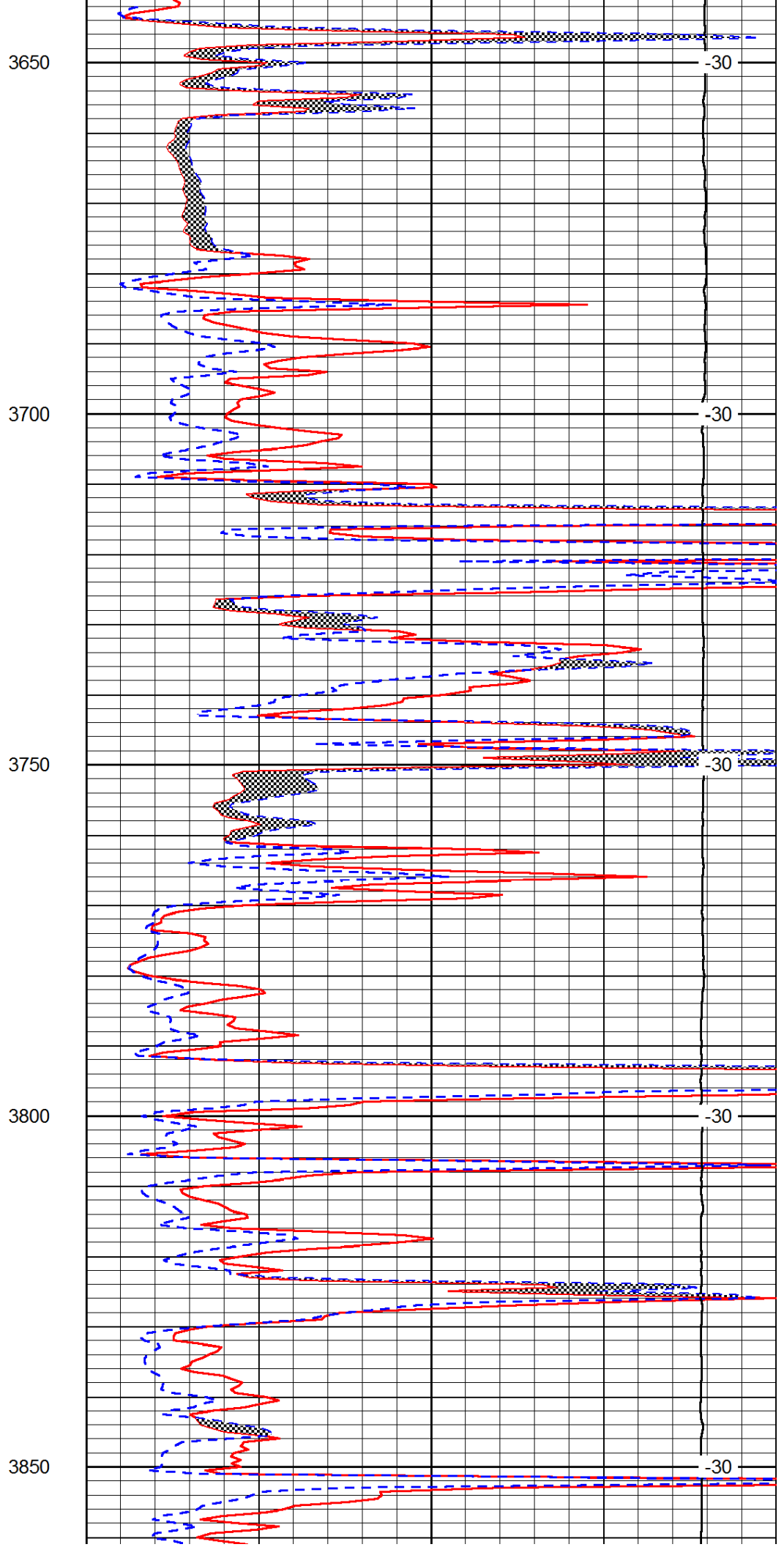
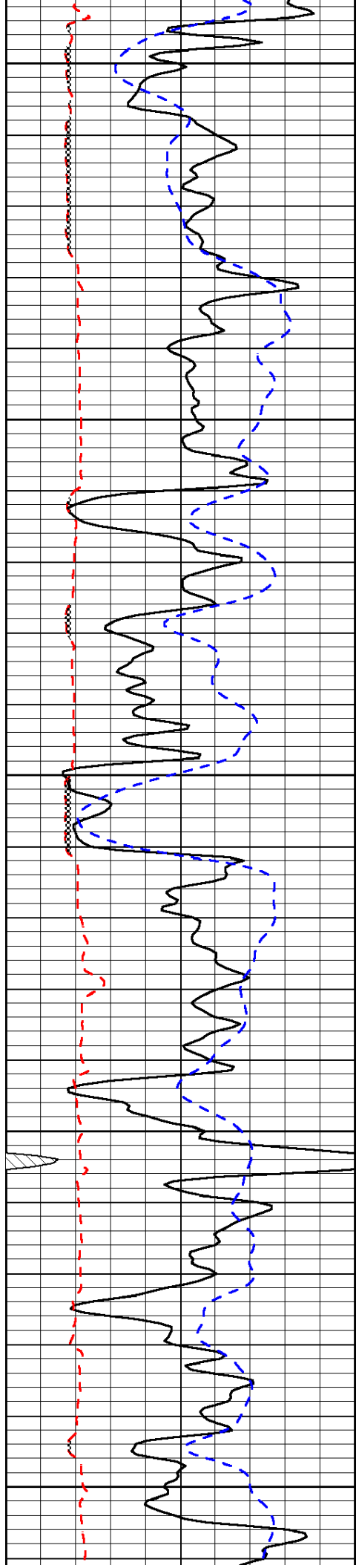
-30

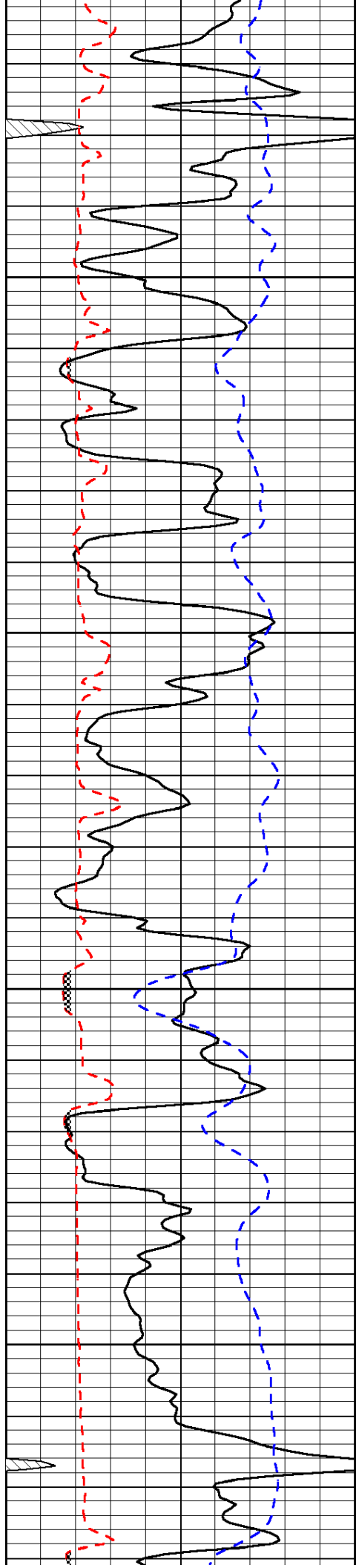
3550

-30

3600

-30



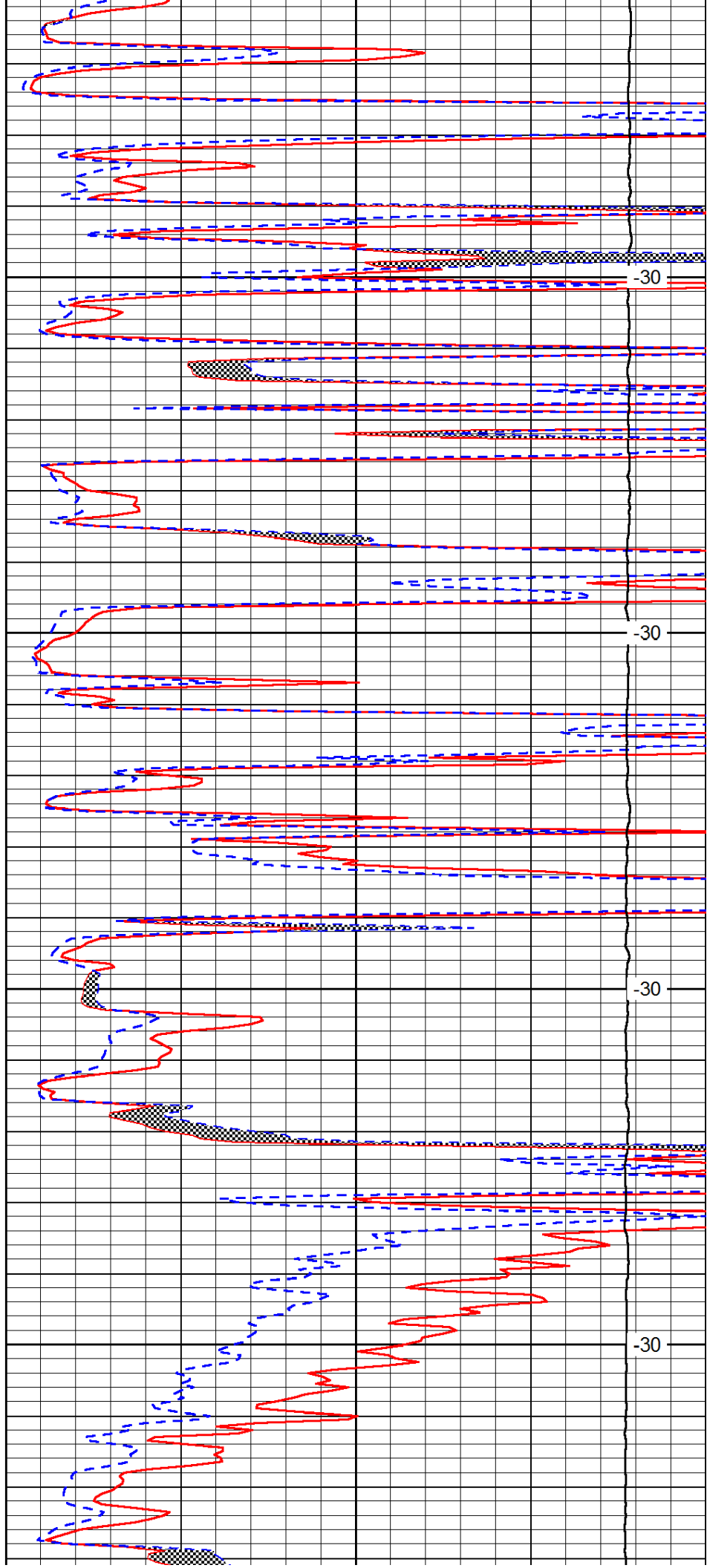


3900

3950

4000

4050

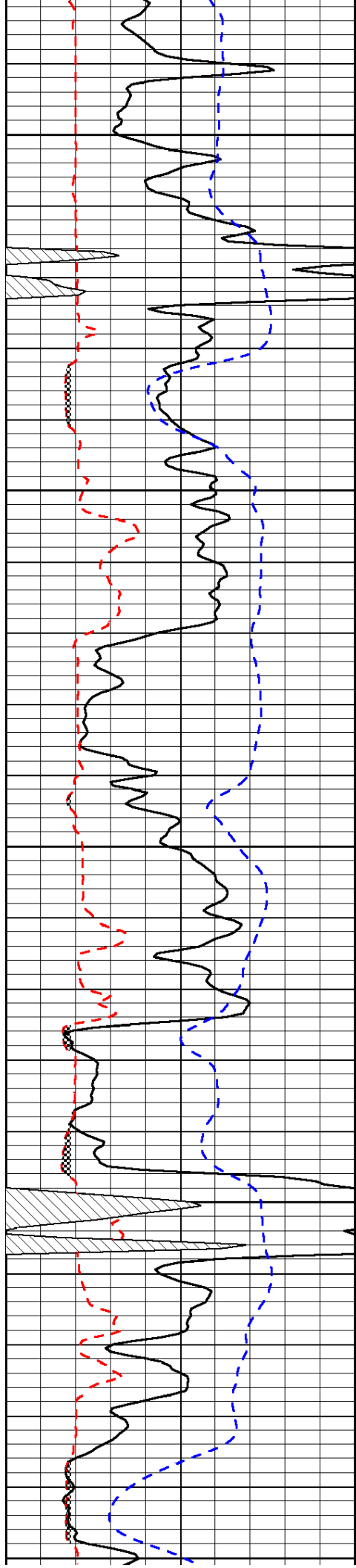


-30

-30

-30

-30



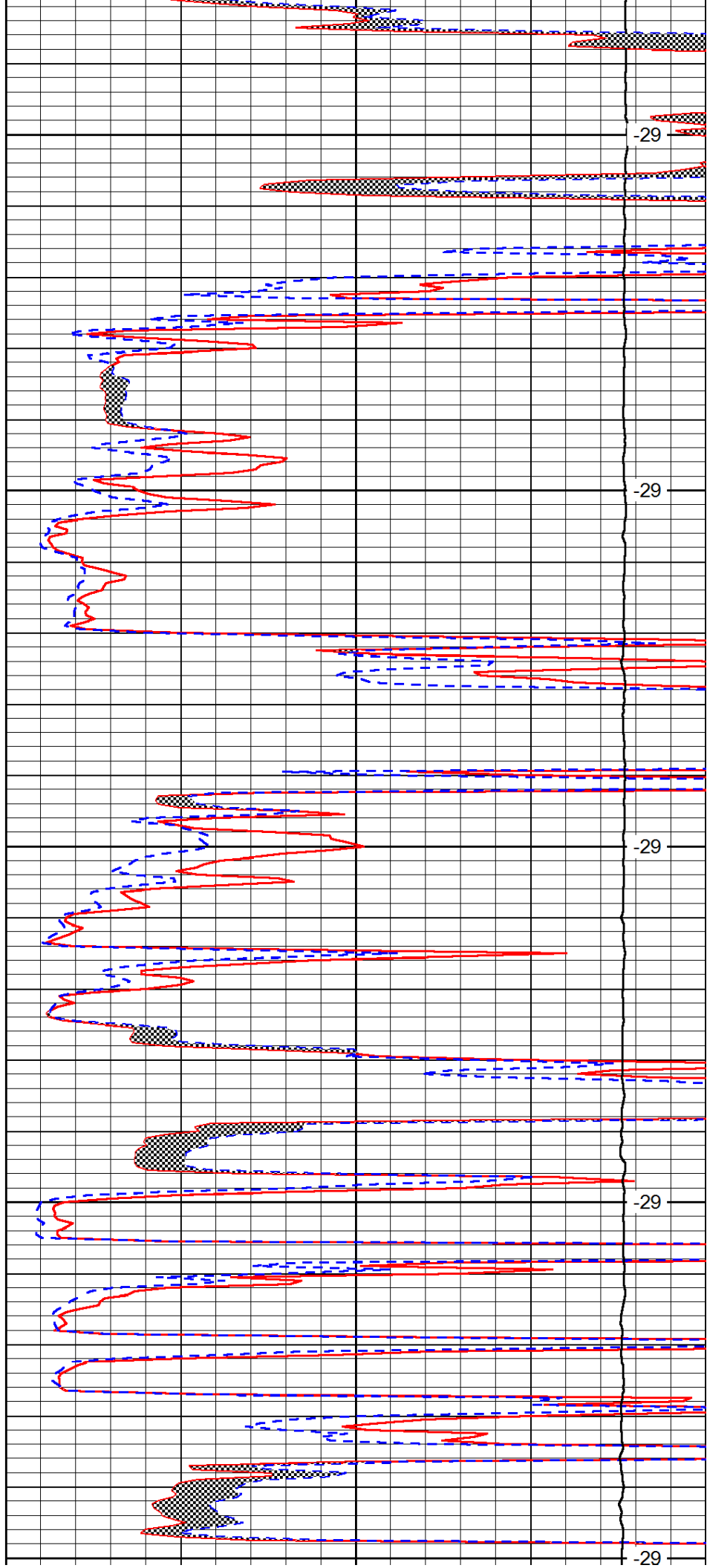
4100

4150

4200

4250

4300



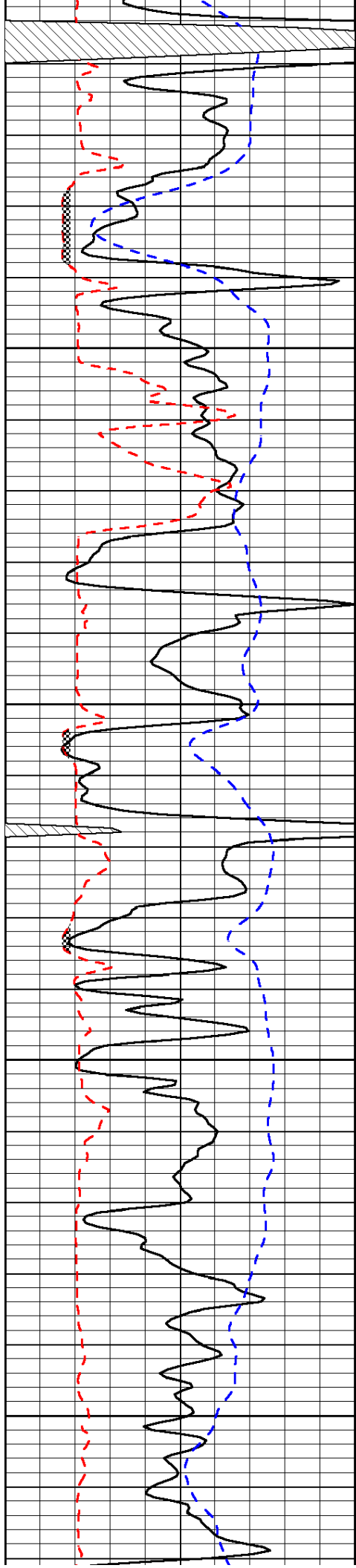
-29

-29

-29

-29

-29

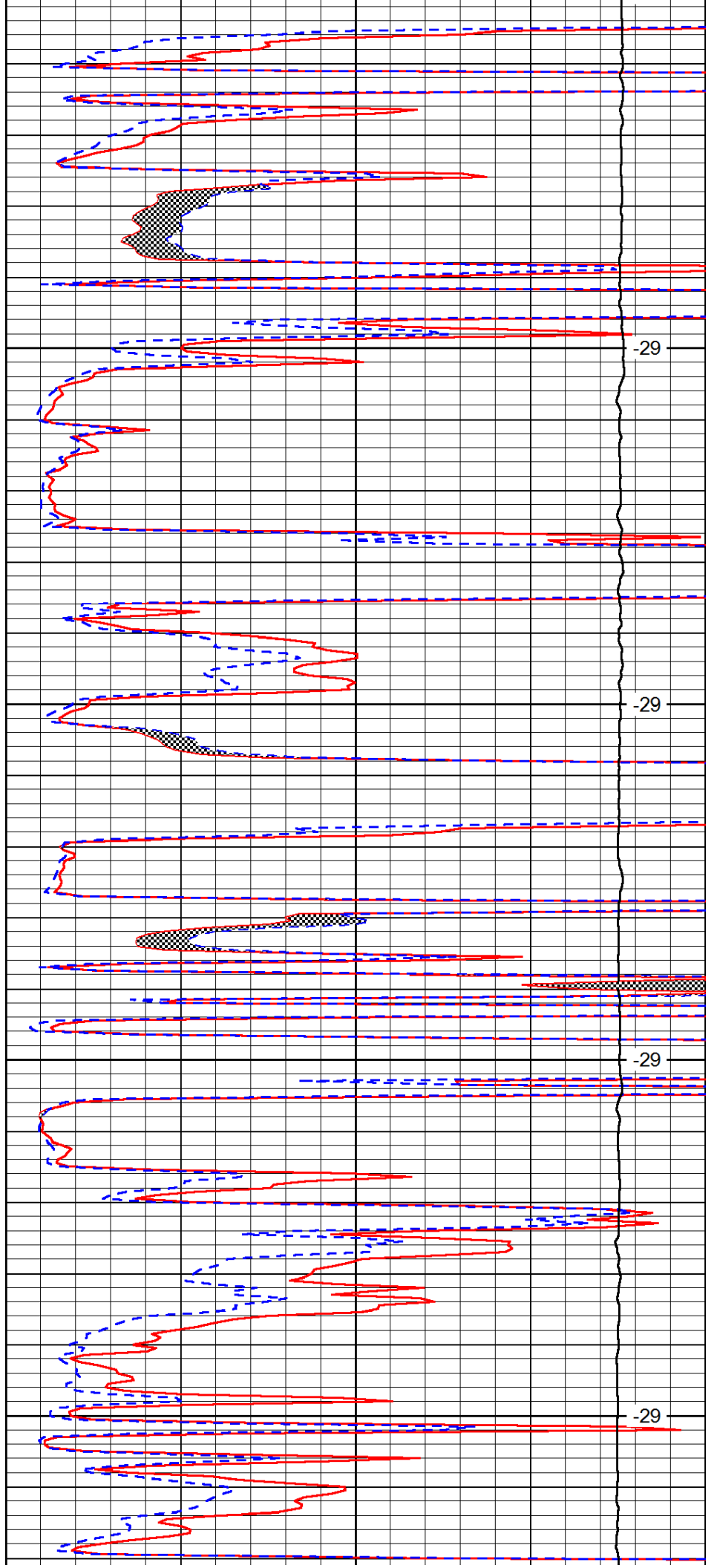


4350

4400

4450

4500

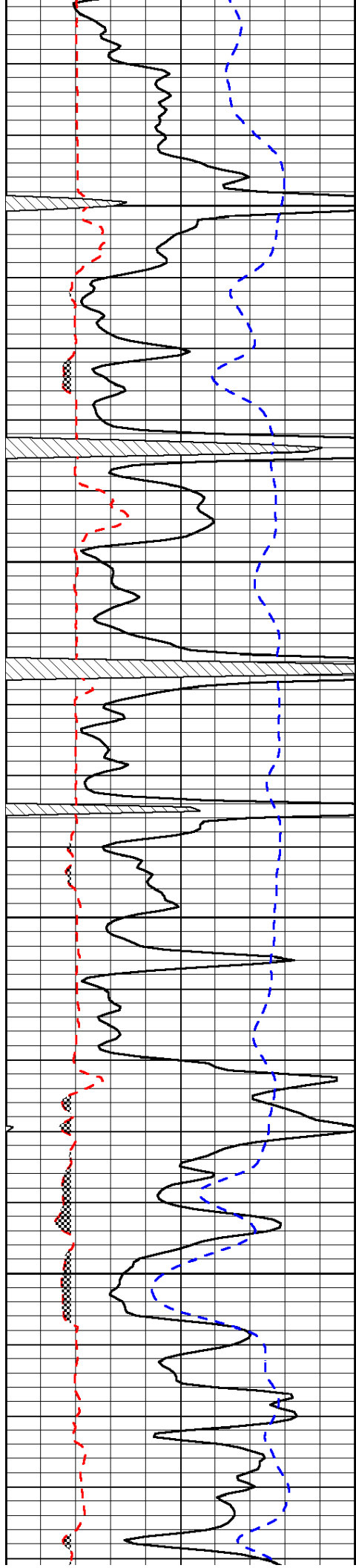


-29

-29

-29

-29

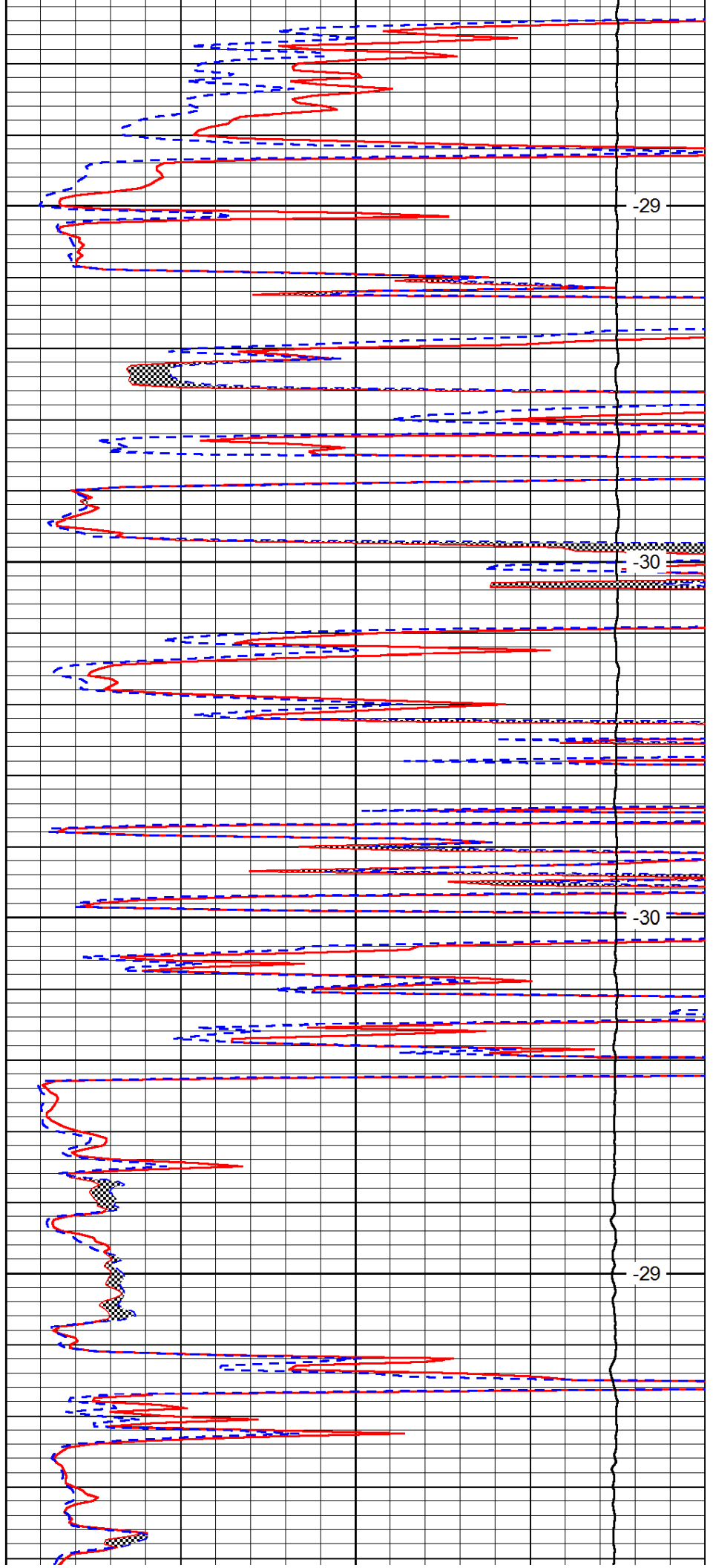


4550

4600

4650

4700

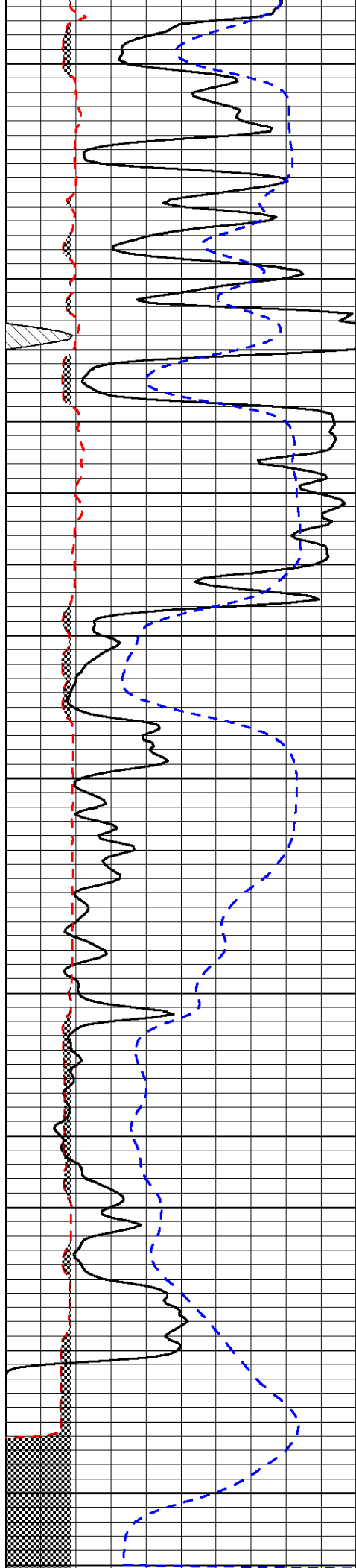


-29

-30

-30

-29



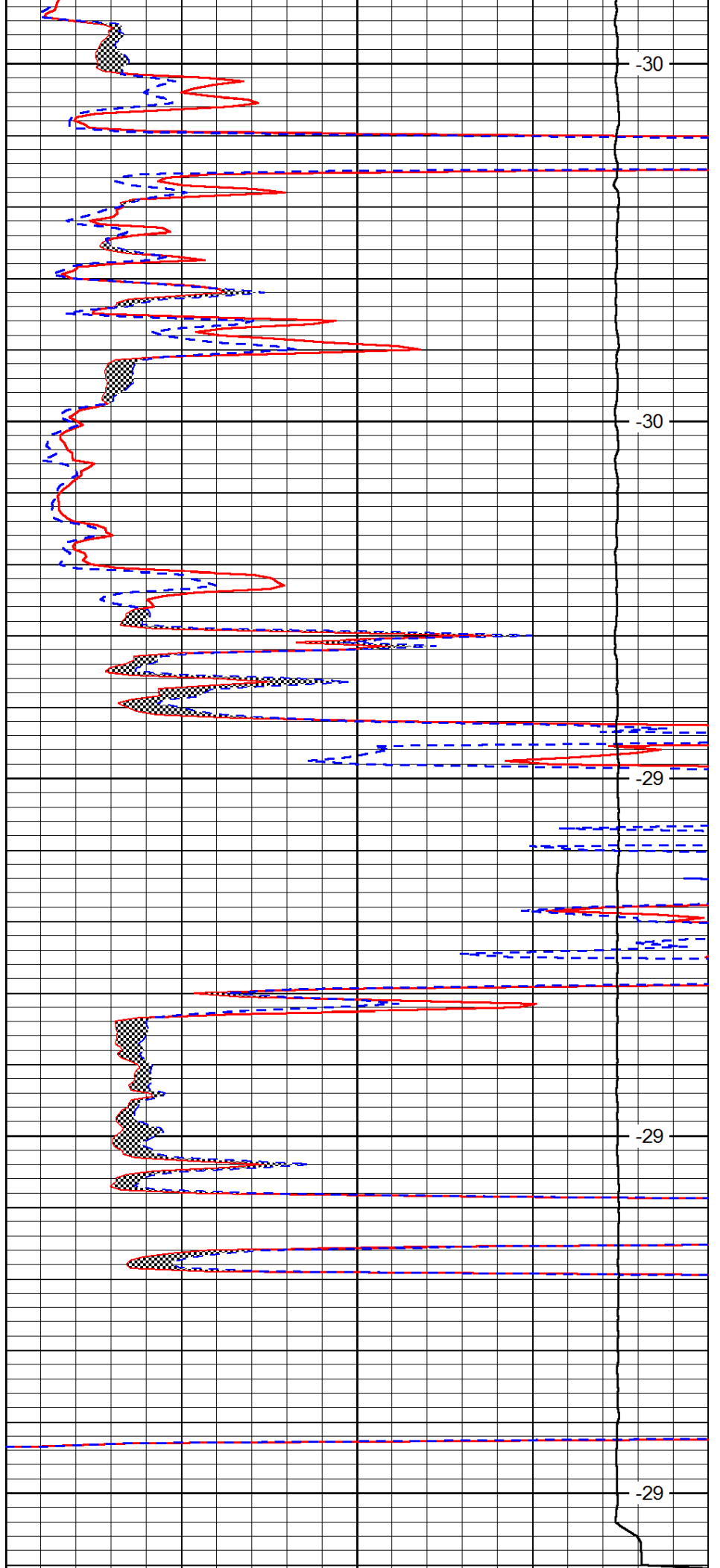
4750

4800

4850

4900

4950



-30

-30

-29

-29

-29

0	Gamma Ray	150
6	Micro Log Caliper (GAPI)	16
-200	SP (mV)	0

0	Micro Inverse 1 X 1	40
0	Micro Normal 2"	40
15000	Line Weight	0

LSPD