



Pioneer Energy Services

Microresistivity Log

15-171-20905-00-00

API No.

Company **Murfin Drilling Company, Inc.**

Well **Welch #1-18**

Field

County **Scott**

State

Kansas

Location

990' FSL & 1015' FWL

Other Services
CNL/CDL
DIL/BHCS

Sec: 18

Twp: 16S

Rge: 32W

Elevation

K.B. 2966
D.F. 2955
G.L. 2955

Permanent Datum
Ground Level

2955

Log Measured From
Kelly Busing

11 Ft. Above Perm. Datum

Drilling Measured From
Kelly Busing

Date

9/10/2012

Run Number

Two

Depth Driller

4715

Depth Logger

4717

Bottom Logged Interval

4716

Top Log Interval

3600

Casing Driller

8.625 @ 222

Casing Logger

222

Bit Size

7.875

Type Fluid in Hole

Chemical

Salinity, ppm CL

4800

Density / Viscosity

9.2 67

pH / Fluid Loss

10.5 6.5

Source of Sample

Flowline

Rm @ Meas. Temp

0.70 @ 60

Rmf @ Meas. Temp

0.53 @ 60

Rmc @ Meas. Temp

0.95 @ 60

Source of Rmf / Rmc

Charts

Rm @ BHT

0.34 @ 125

Operating Rig Time

6 Hours

Max Rec. Temp. F

125

Equipment Number

91

Location

Hays

Recorded By

D. Schmidt

Witnessed By

Tom Funk

<<< Fold Here >>>

All interpretations are opinions based on inferences from electrical or other measurements and we cannot and do not guarantee the accuracy or correctness of any interpretation, and we shall not, except in the case of gross or willful negligence on our part, be liable or responsible for any loss, costs, damages, or expenses incurred or sustained by anyone resulting from any interpretation made by any of our officers, agents or employees. These interpretations are also subject to our general terms and conditions set out in our current Price Schedule.

Comments

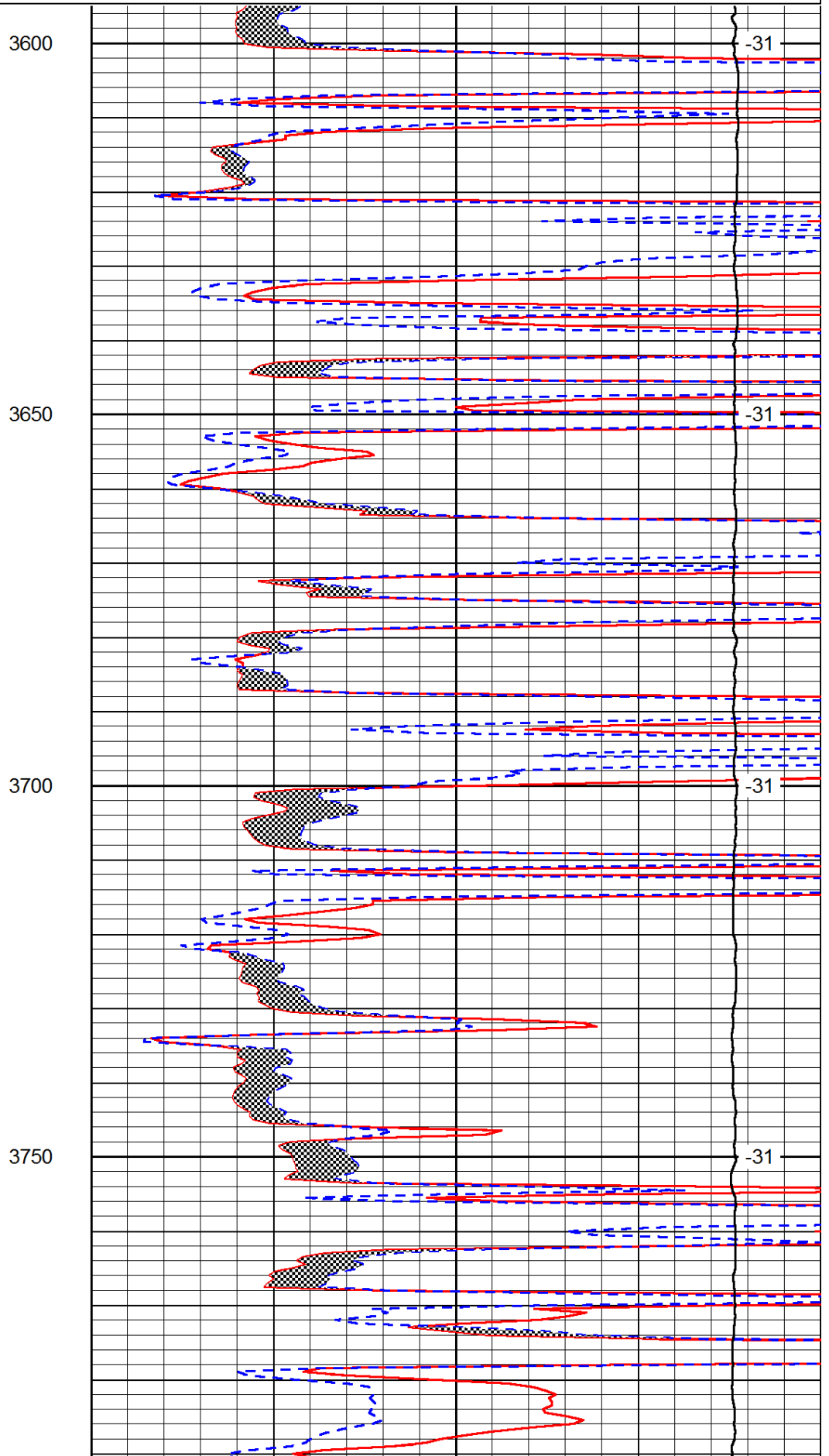
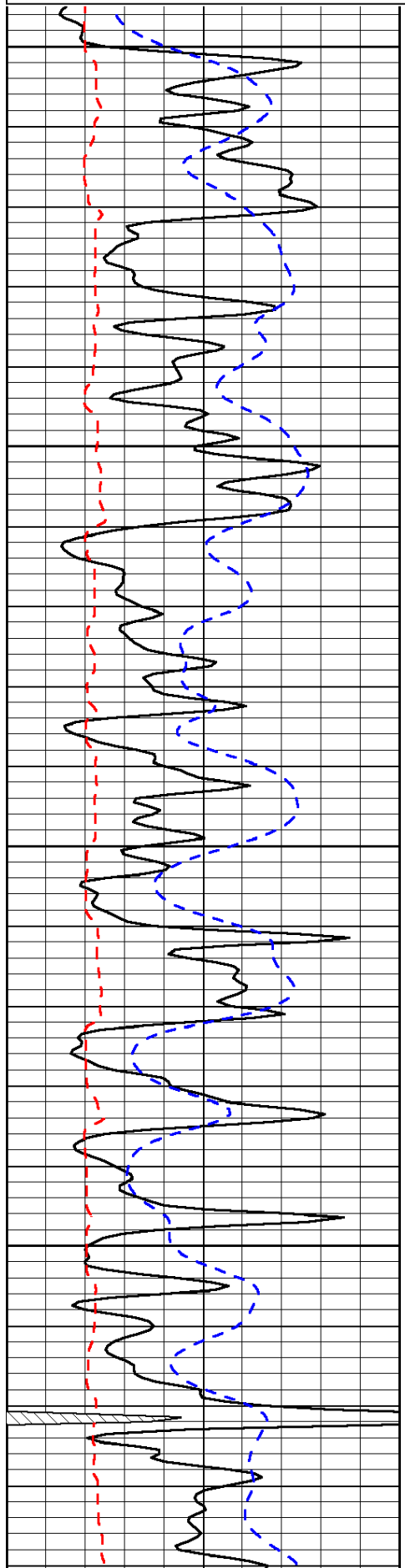
Thank you for using Pioneer Energy Services
www.pioneerres.com
 785 625 3858
 Hwy 4 & 83 junction,
 4.7 North to 270 Rd, 1 1/2 West,
 N&W to location

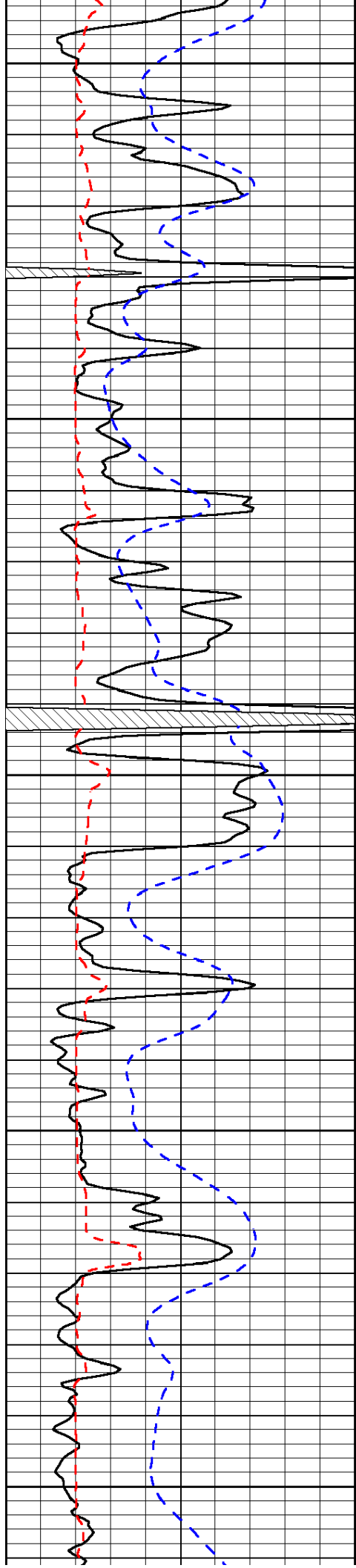
Database File: c:\warrior\data\murfin_welch #1-18\murfin_091012hd.db
 Dataset Pathname: dil/mrfstack
 Presentation Format: micro
 Dataset Creation: Mon Sep 10 10:24:29 2012
 Charted by: Depth in Feet scaled 1:240

0	Gamma Ray	150
6	Micro Log Caliper (GAPI)	16
-200	SP (mV)	0

0	Micro Inverse 1 X 1	40
0	Micro Normal 2"	40
15000	Line Weight	0

LSPD





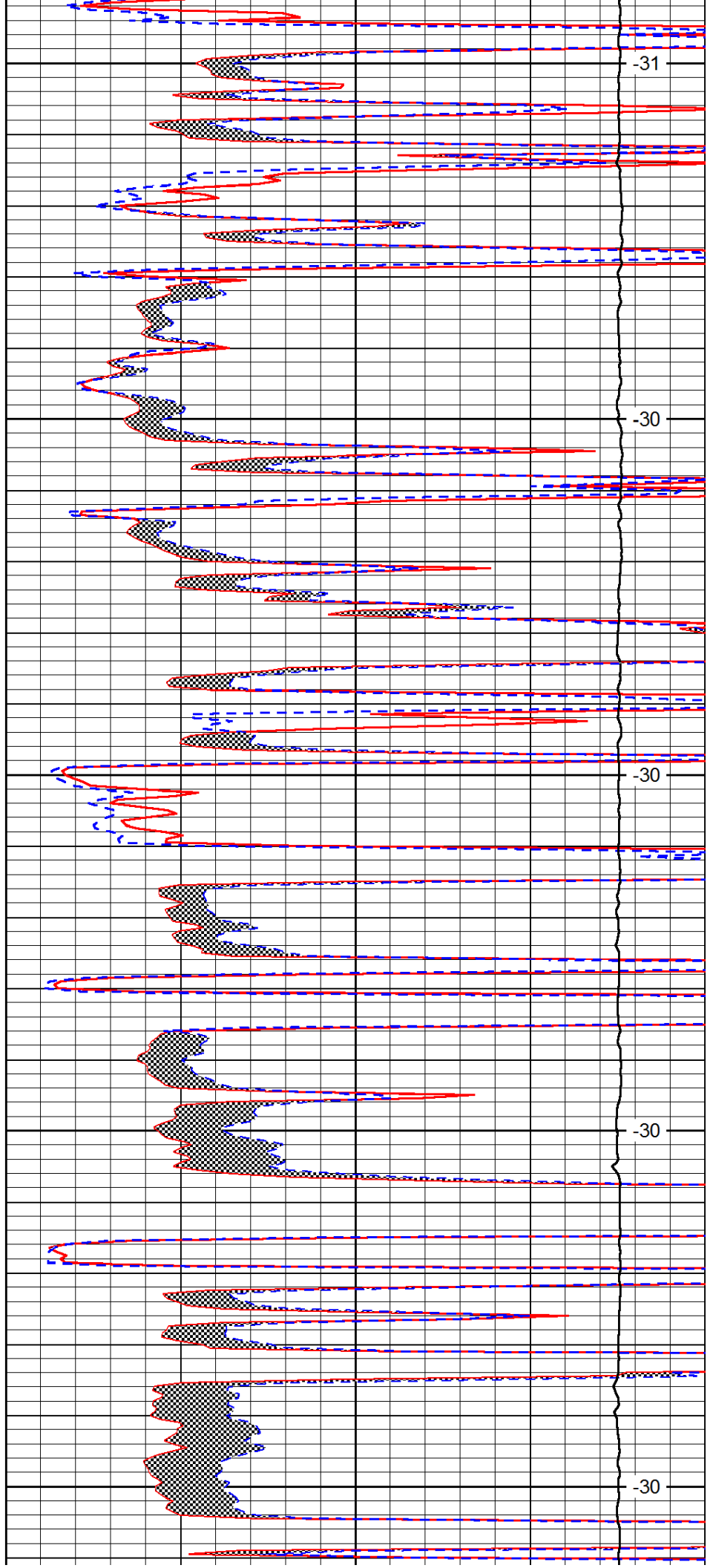
3800

3850

3900

3950

4000



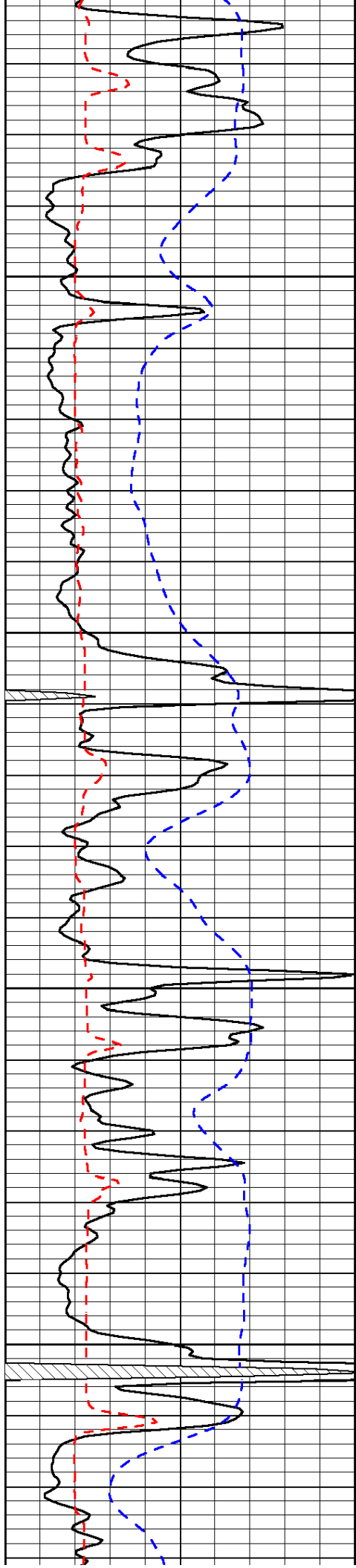
-31

-30

-30

-30

-30

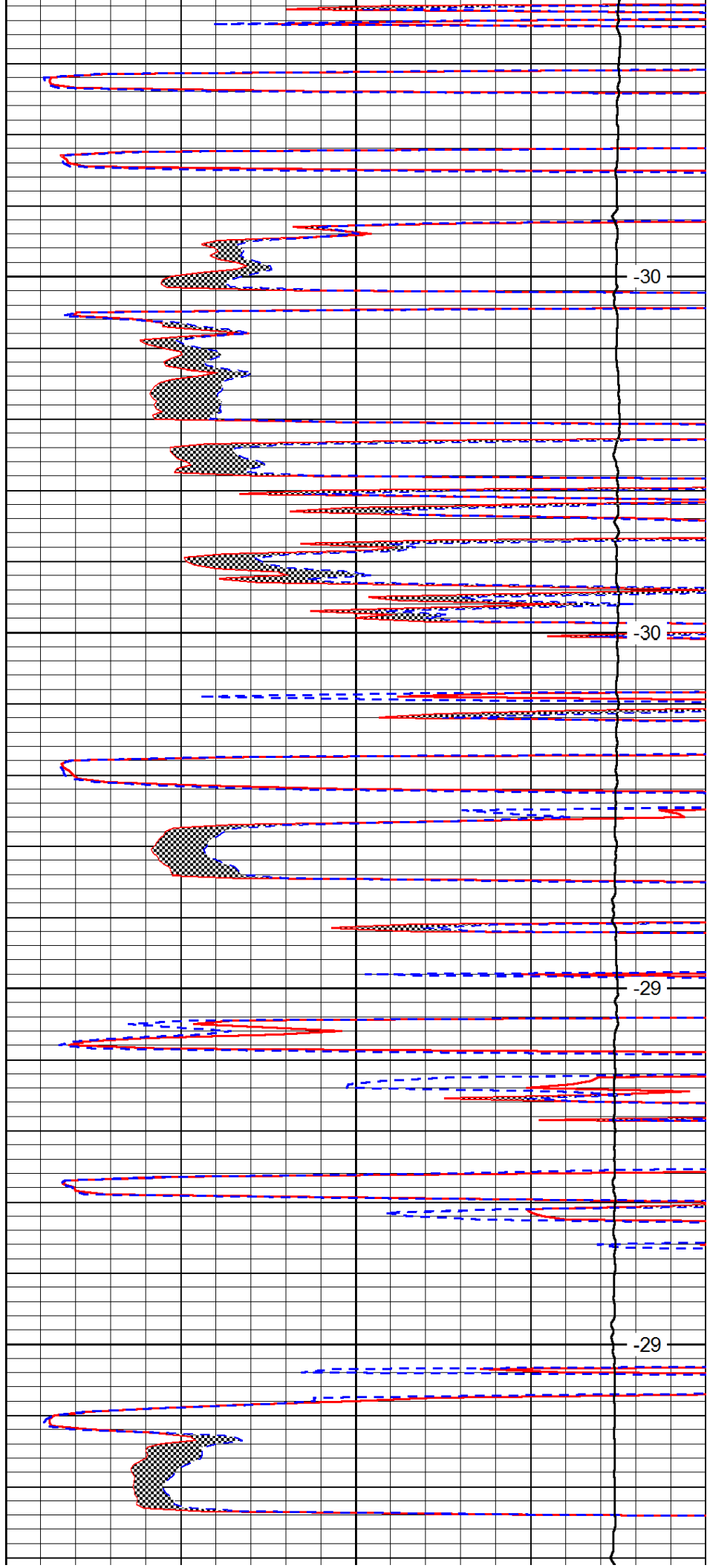


4050

4100

4150

4200

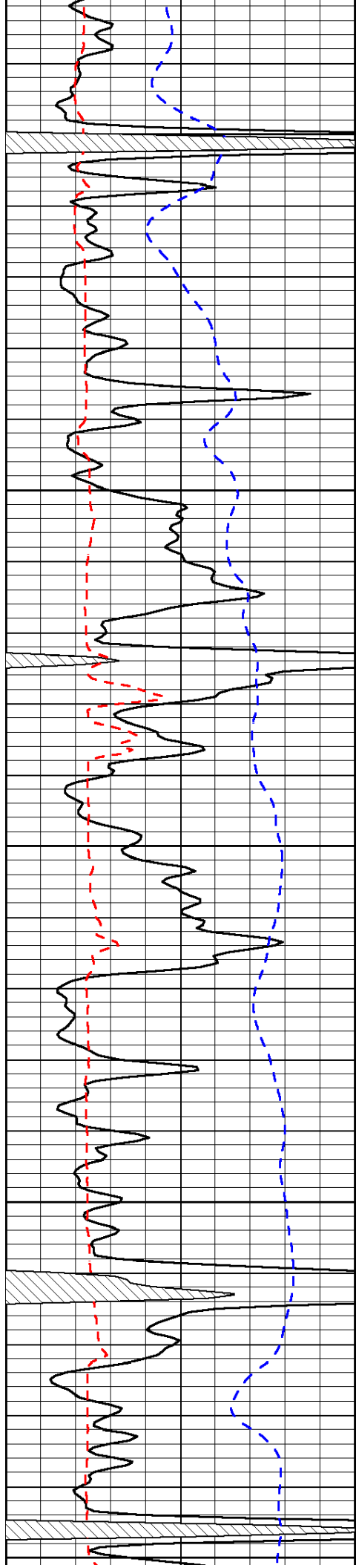


-30

-30

-29

-29



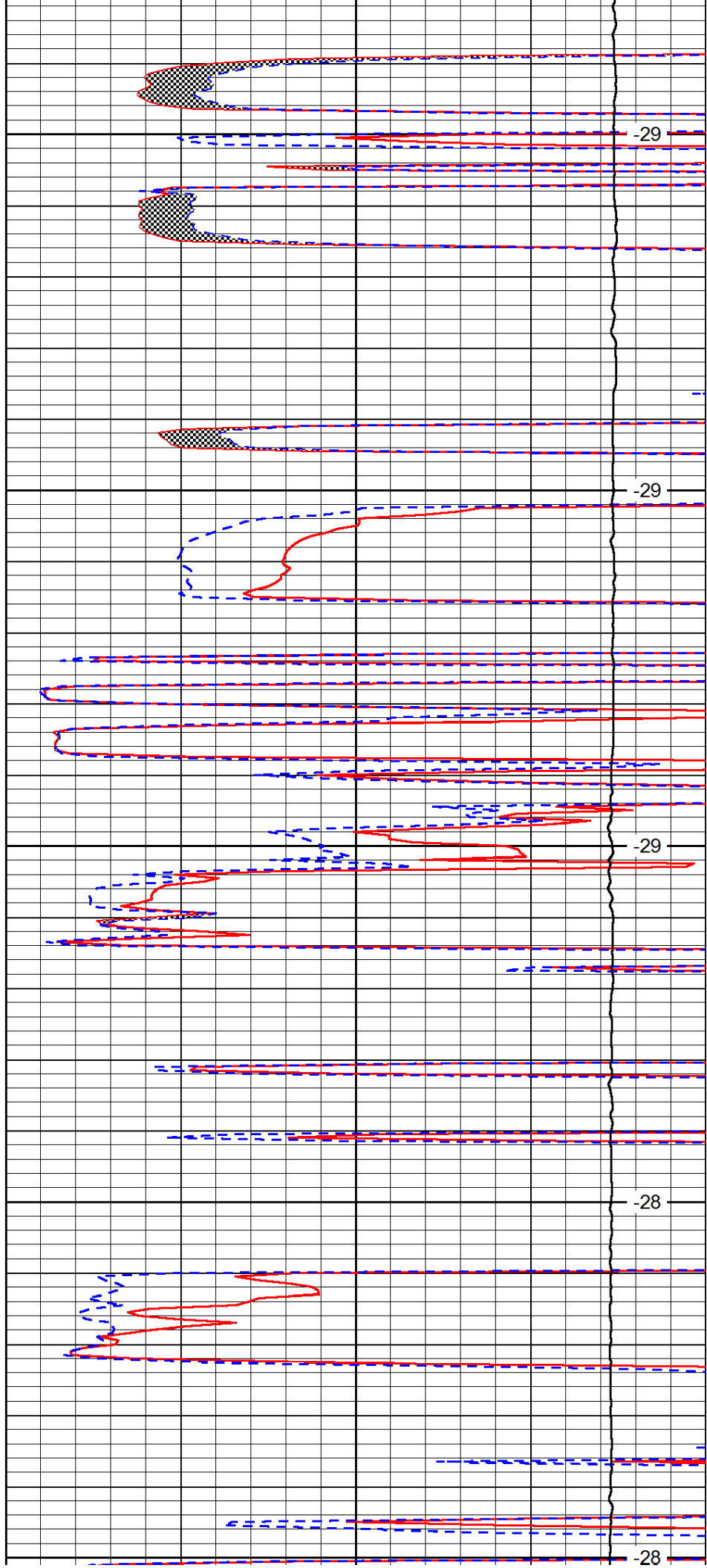
4250

4300

4350

4400

4450



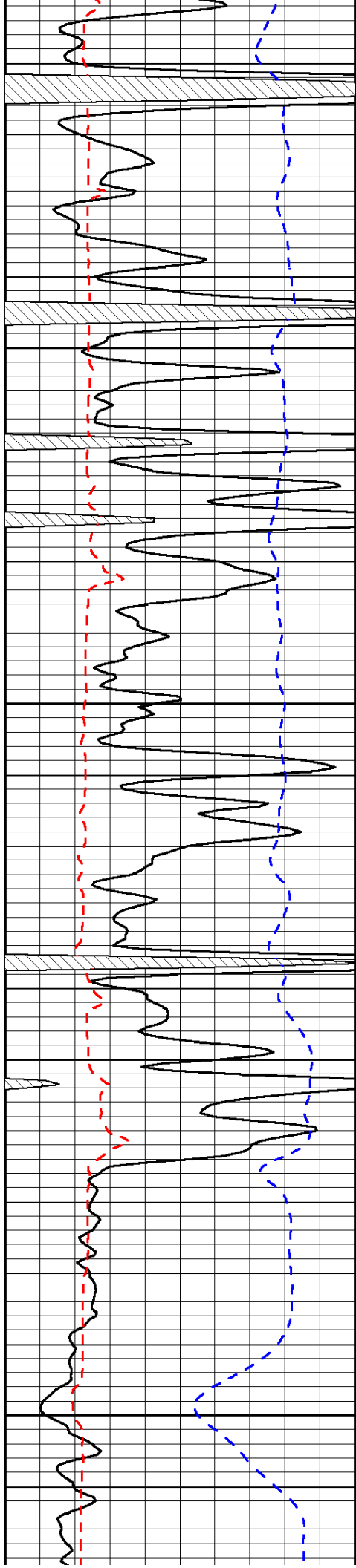
-29

-29

-29

-28

-28

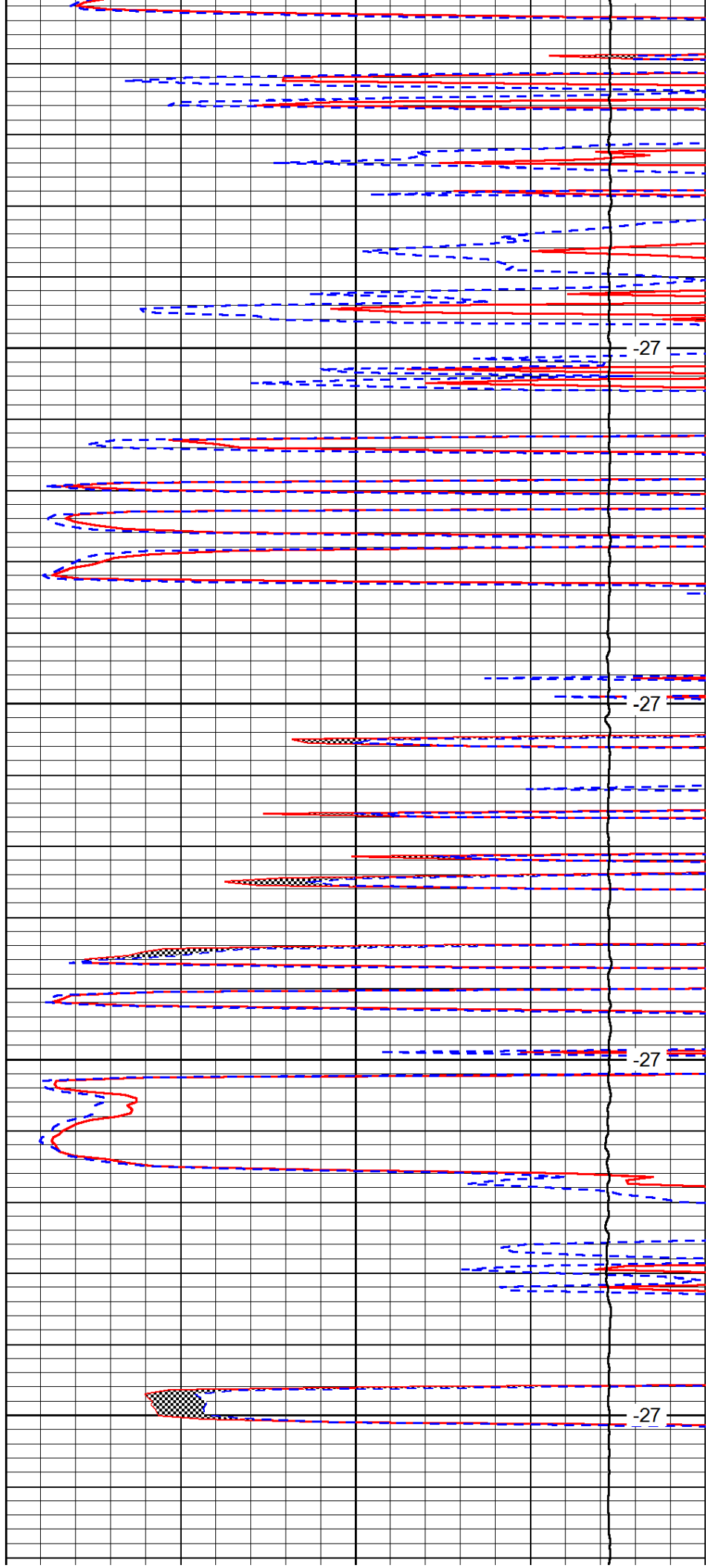


4500

4550

4600

4650

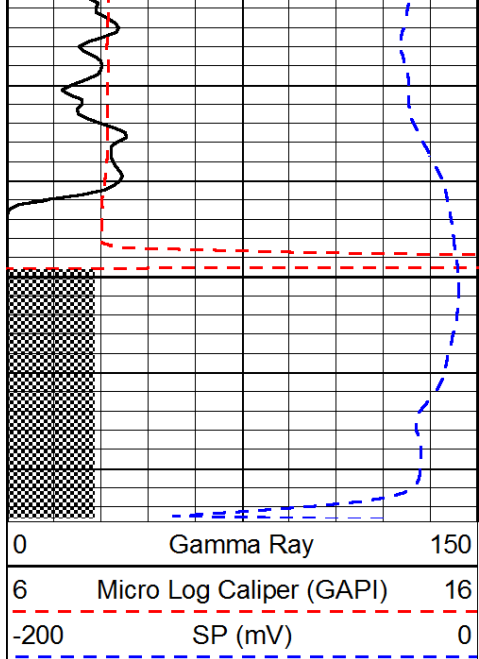


-27

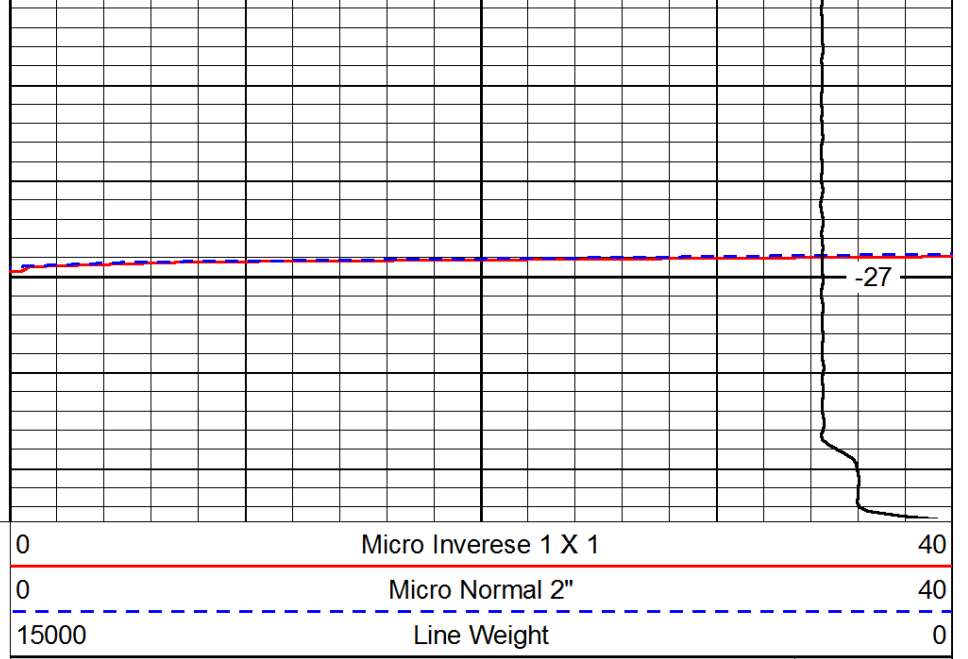
-27

-27

-27



4700



-27

LSPD