

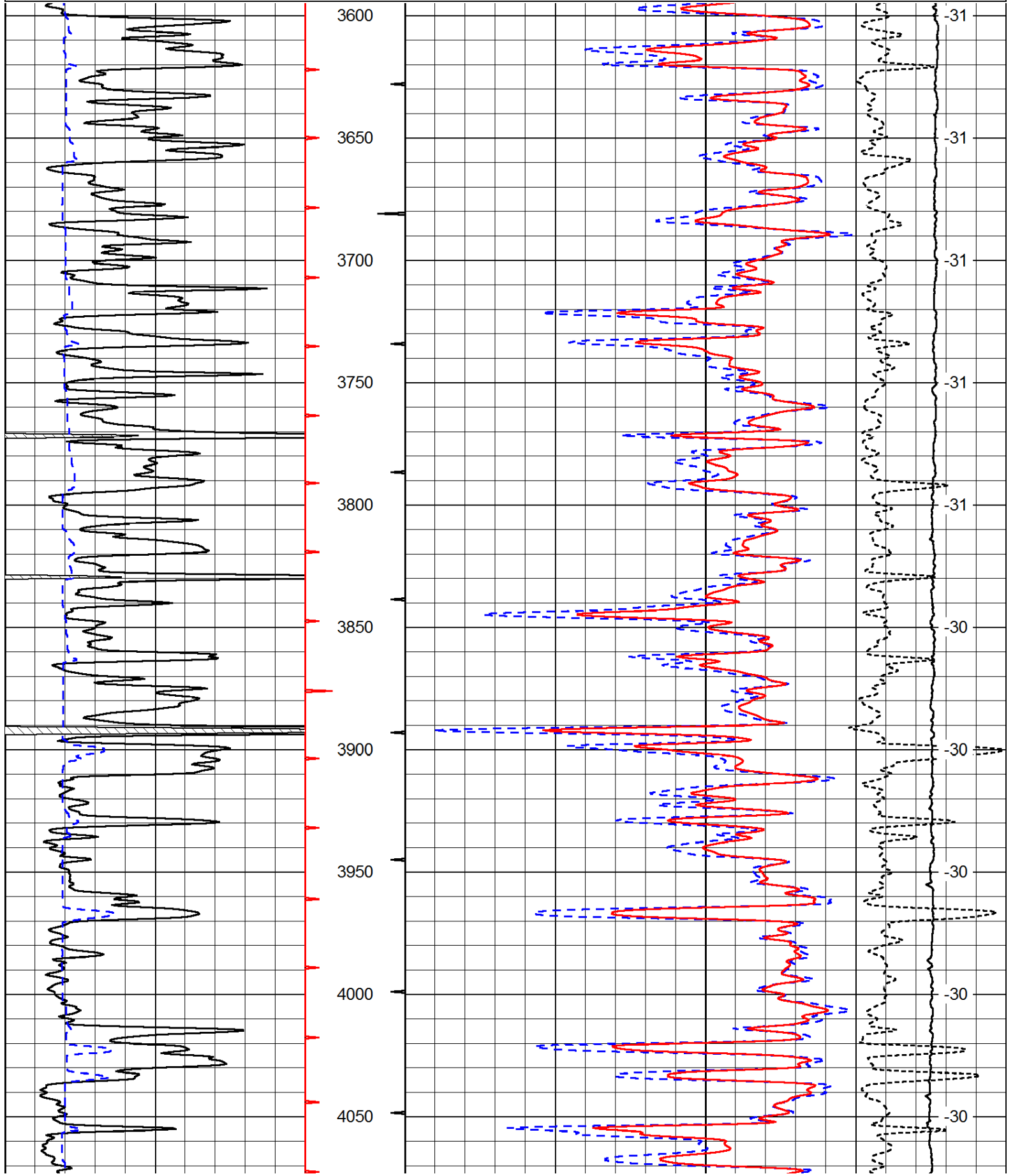


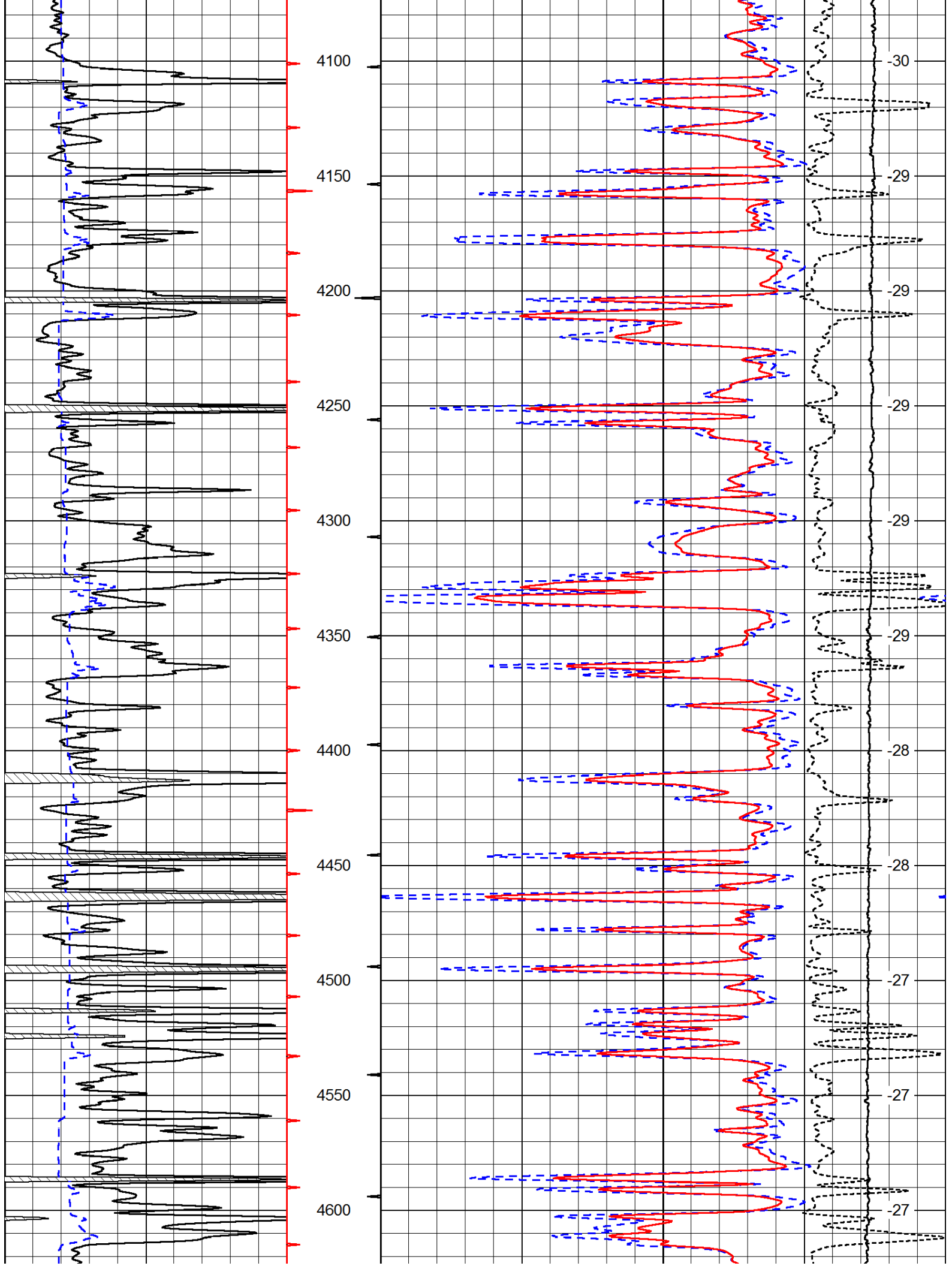
Pioneer Energy Services

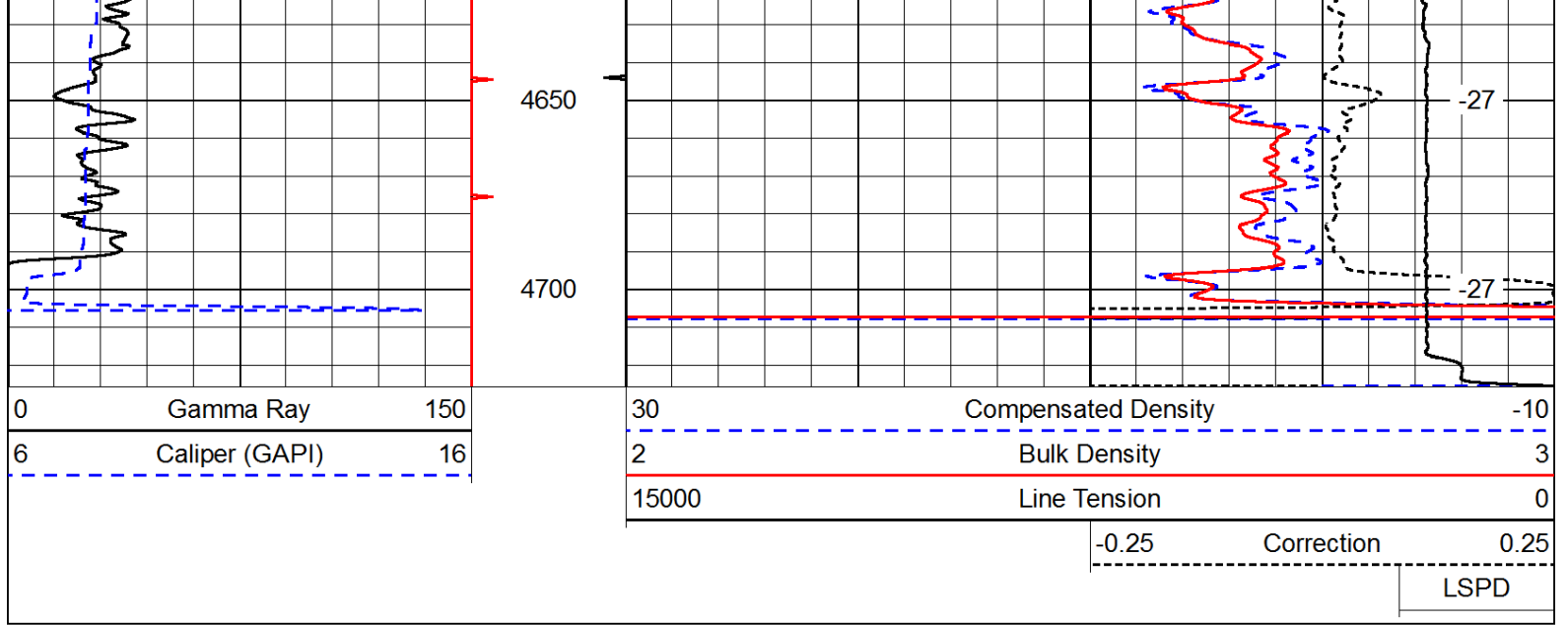
<<< Fold Here >>>
All interpretations are opinions based on inferences from electrical or other measurements and we cannot and do not guarantee the accuracy or correctness of any interpretation, and we shall not, except in the case of gross or willful negligence on our part, be liable or responsible for any loss, costs, damages, or expenses incurred or sustained by anyone resulting from any interpretation made by any of our officers, agents or employees. These interpretations are also subject to our general terms and conditions set out in our current Price Schedule.
Comments
<p>Thank you for using Pioneer Energy Services www.pioneeres.com 785 625 3858 Hwy 4 & 83 junction, 4.7 North to 270 Rd, 1 1/2 West, N&W to location</p>

Database File: c:\warrior\data\murfin_welch #1-18\murfin_091012hd.db
Dataset Pathname: dil\mrfstack
Presentation Format: cdl
Dataset Creation: Mon Sep 10 10:24:29 2012
Charted by: Depth in Feet scaled 1:600

Charted by: Depth in Feet scaled 1:600					
0	Gamma Ray	150	30	Compensated Density	-10
6	Caliper (GAPI)	16	2	Bulk Density	3
			15000	Line Tension	0
			-0.25 Correction 0.25		
			LSPD		







Database File: c:\warrior\data\murfin_welch #1-18\murfin_091012hd.db
Dataset Pathname: dil/mrfstack
Presentation Format: cndlspec
Dataset Creation: Mon Sep 10 10:24:29 2012
Charted by: Depth in Feet scaled 1:240

