



Pioneer Energy Services

Microresistivity Log

15-069-20,393-00-00

API No.

Company **Falcon Exploration, Inc.**

Well **James Koehn No.1-31(NW)**

Field

County **Gray**

State

Kansas

Location

**E/2 SW SE NW1/4
2310' FNL & 1670' FWL**

Sec: **31**

Twp: **28S**

Rge: **30W**

Other Services
CNL/CDL
DIL/BHCS

Elevation

K.B. 2842
D.F.
G.L. 2829

Permanent Datum
Log Measured From
Drilling Measured From

Ground Level
Kelly Bushing
From Kelly Bushing

Elevation 2829
13 Ft. Above Perm. Datum

Date

9/19/2012

Run Number

Two

Depth Driller

5550

Depth Logger

5549

Bottom Logged Interval

5548

Top Log Interval

2600

Casing Driller

8.625 @ 1863

Casing Logger

1856

Bit Size

7.875

Type Fluid in Hole

Chemical

Salinity,ppm CL

4.800

Density / Viscosity

9.05 63

pH / Fluid Loss

10.0 8.8

Source of Sample

Flowline

Rm @ Meas. Temp

.44 @ 67

Rmf @ Meas. Temp

.33 @ 67

Rmc @ Meas. Temp

.59 @ 67

Source of Rmf / Rmc

Charts

Rm @ BHT

.22 @ 132

Operating Rig Time

6 Hours

Max Rec. Temp. F

132

Equipment Number

17

Location

Hays

Recorded By

C. Desaire

Witnessed By

Dave Williams

<<< Fold Here >>>

All interpretations are opinions based on inferences from electrical or other measurements and we cannot and do not guarantee the accuracy or correctness of any interpretation, and we shall not, except in the case of gross or willful negligence on our part, be liable or responsible for any loss, costs, damages, or expenses incurred or sustained by anyone resulting from any interpretation made by any of our officers, agents or employees. These interpretations are also subject to our general terms and conditions set out in our current Price Schedule.

Comments

Thank you for using Pioneer Energy Services
www.pioneerenergy.com
785 625 3858

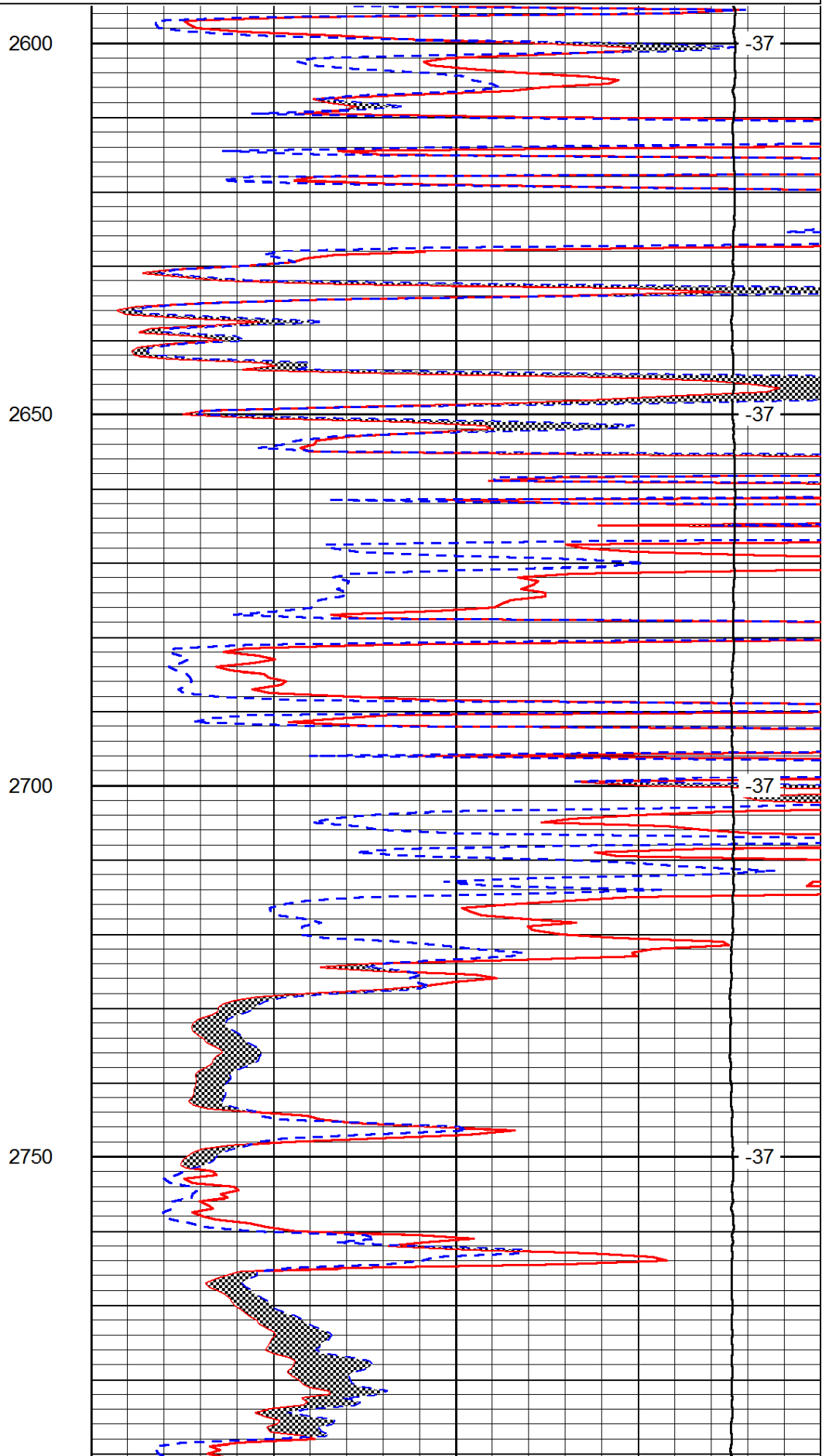
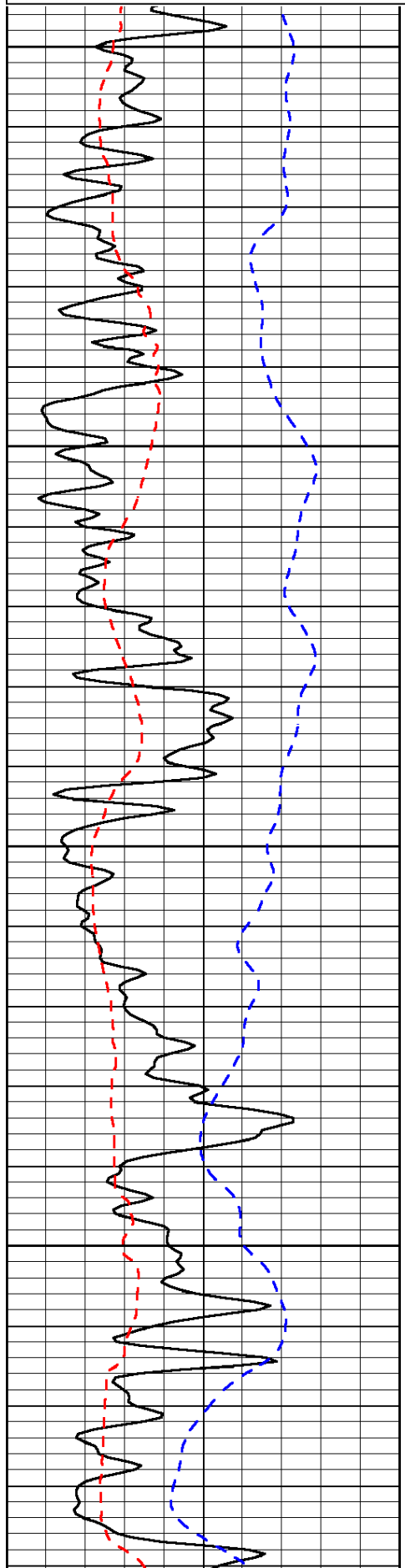
Montezuma KS, W to Hwy 144,
5 W, 1/2 N, E Into

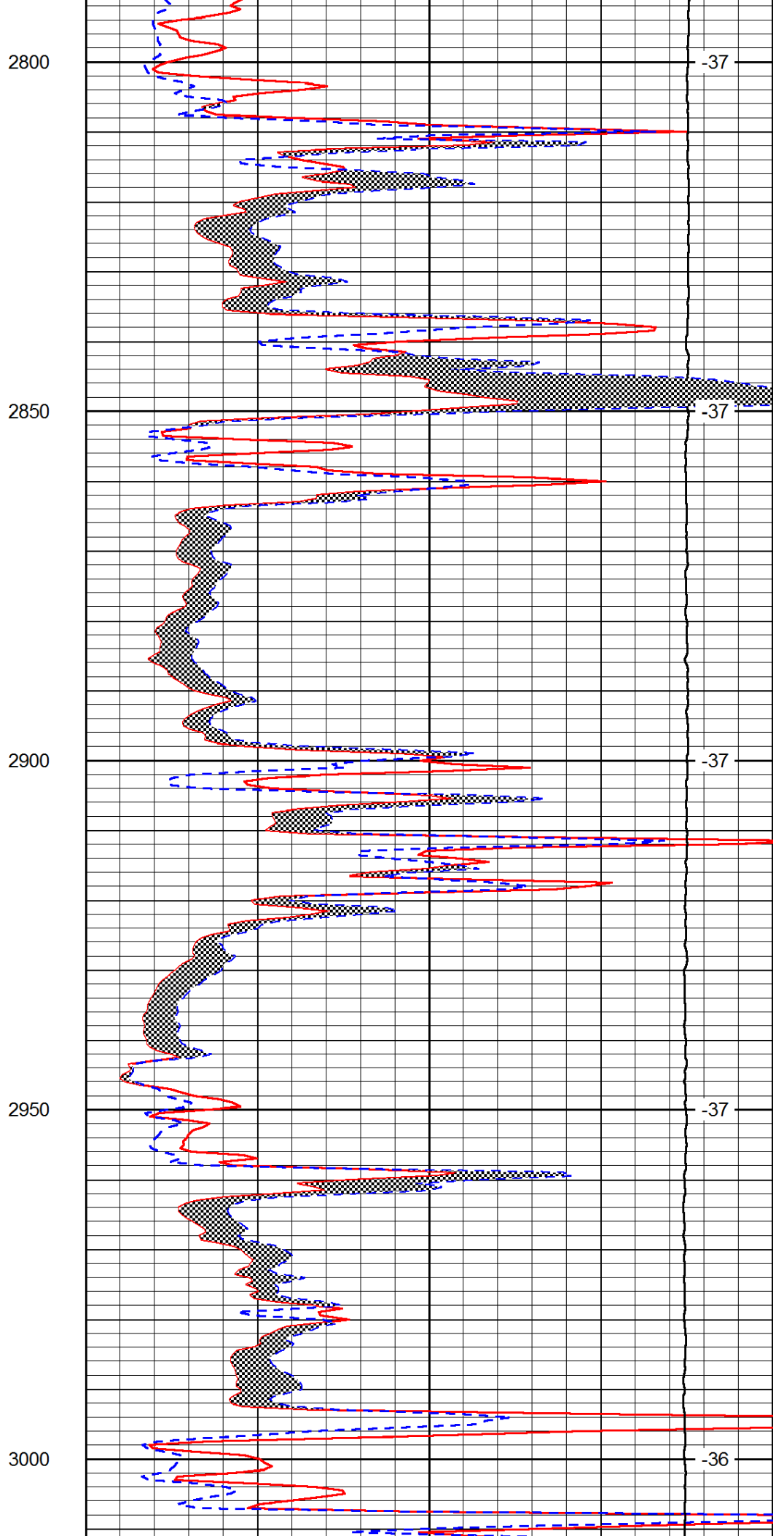
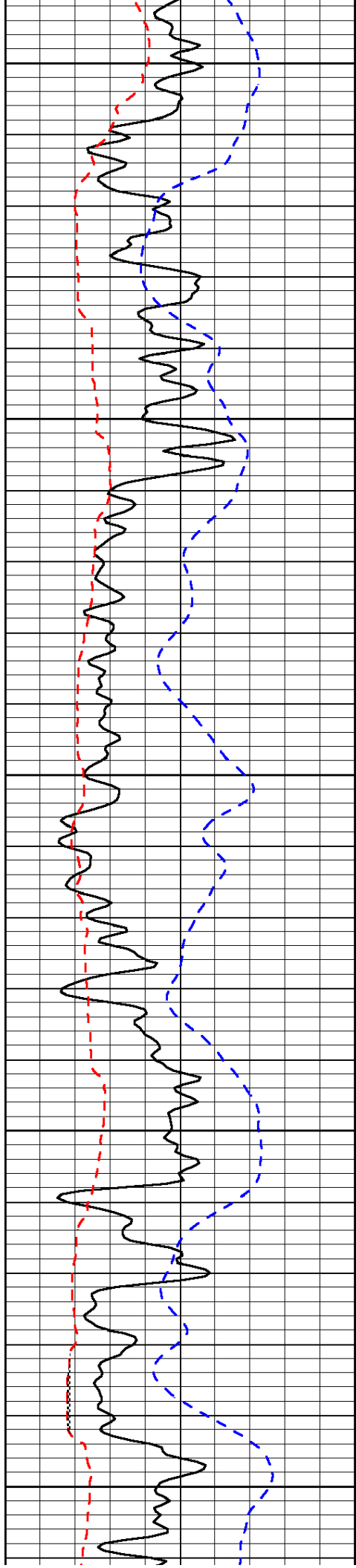
Database File: c:\warrior\data\falcon_james koehn #1-31(nw)\falhd.db
Dataset Pathname: dil/falstk
Presentation Format: micro
Dataset Creation: Wed Sep 19 09:43:39 2012
Charted by: Depth in Feet scaled 1:240

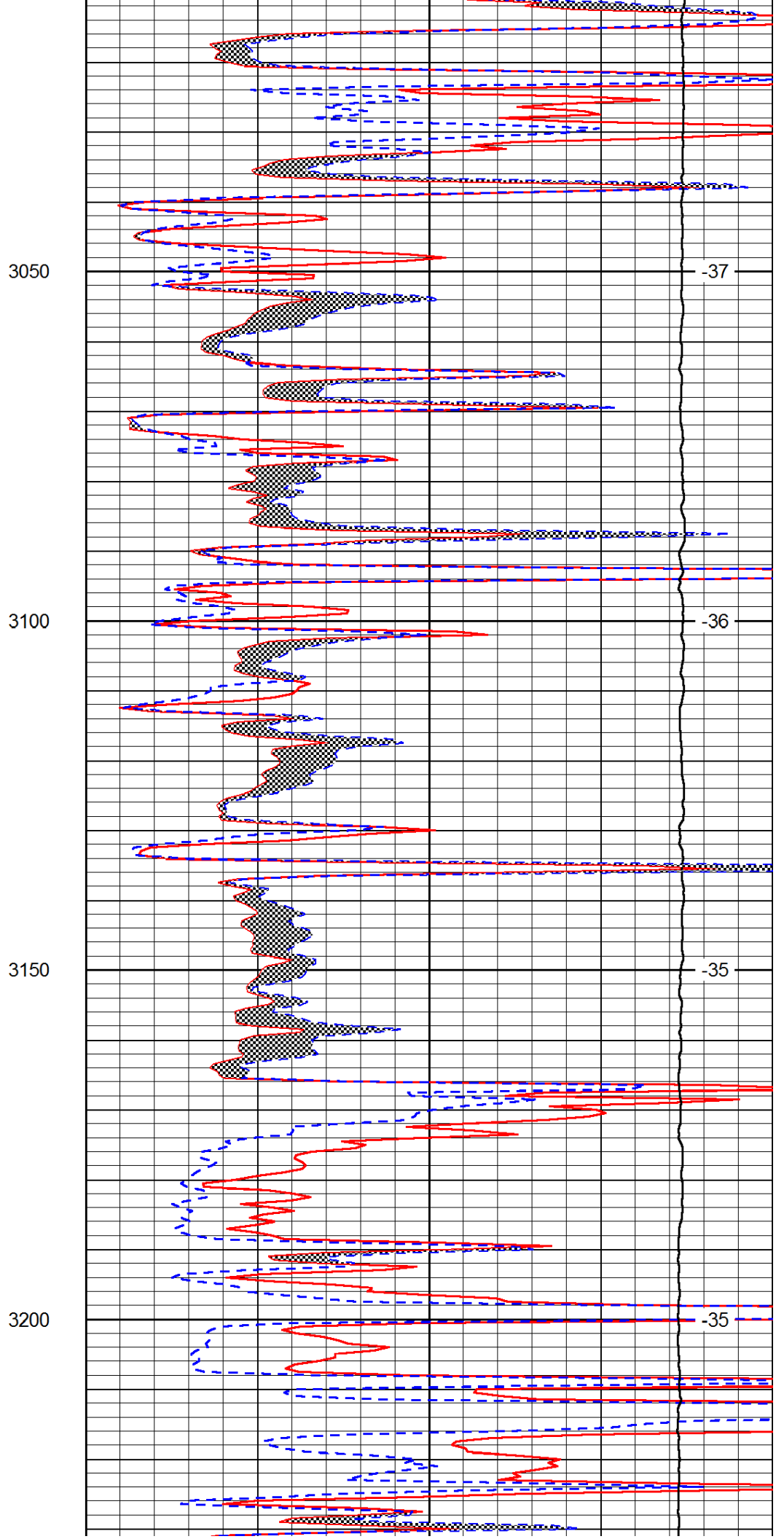
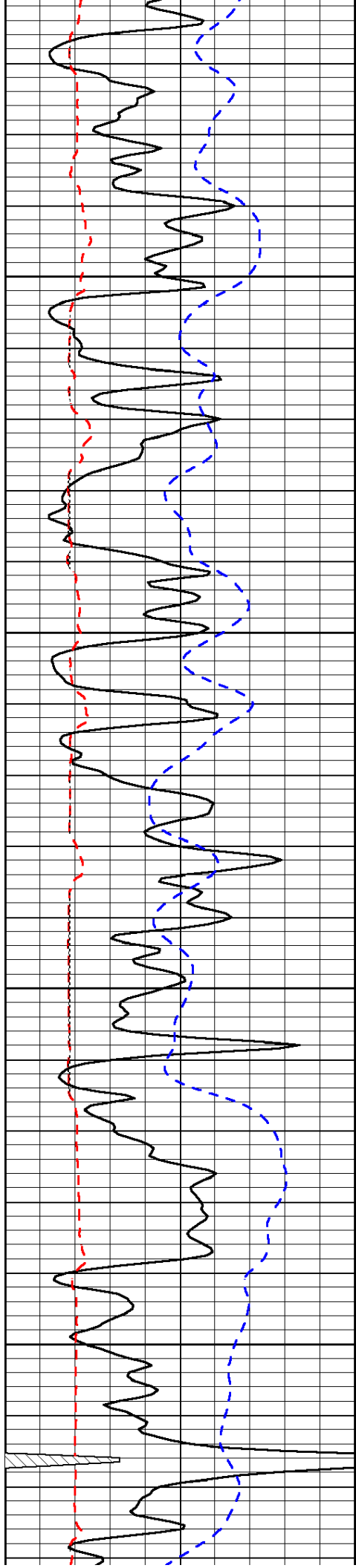
0	Gamma Ray	150
6	Micro Log Caliper (GAPI)	16
-200	SP (mV)	0

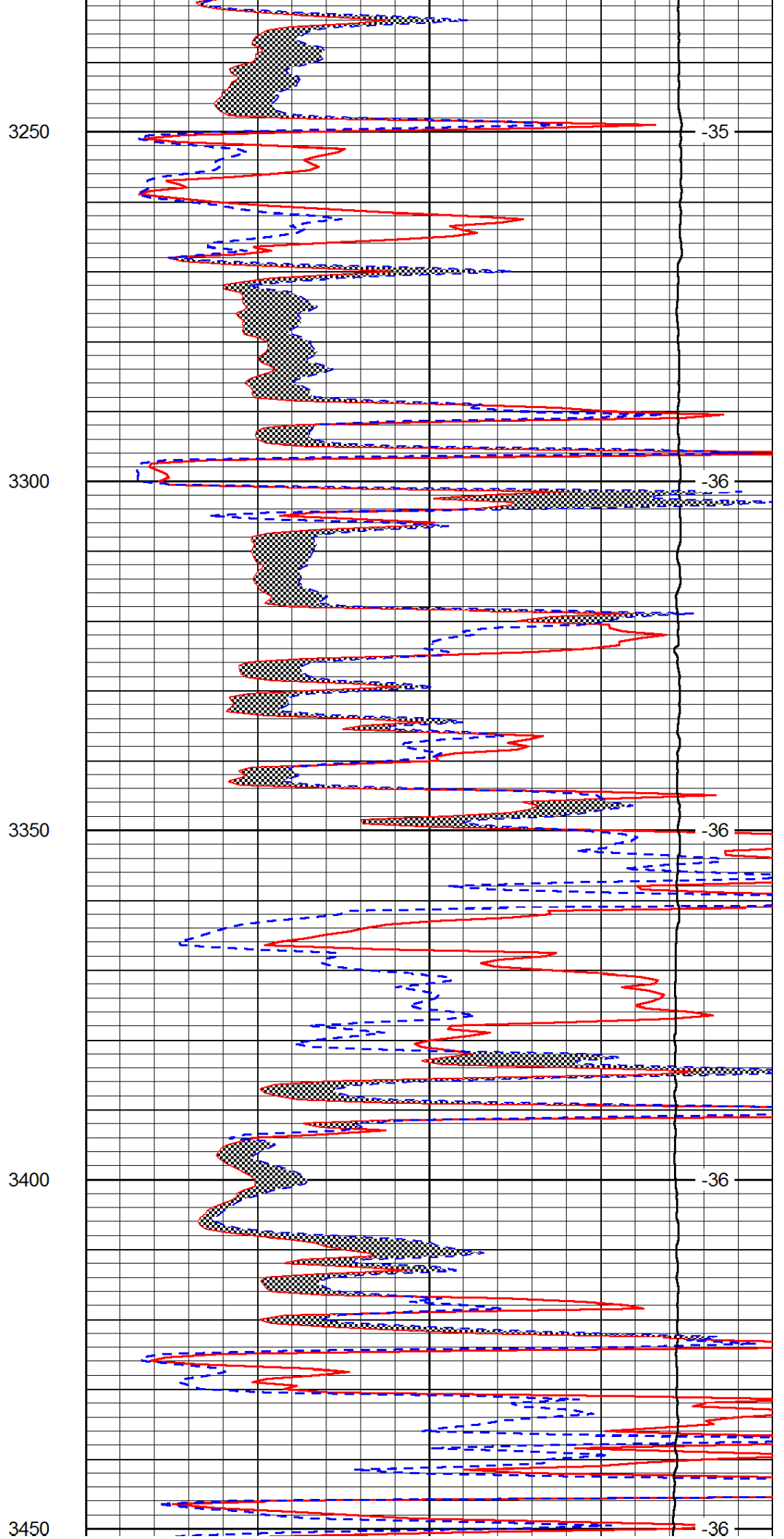
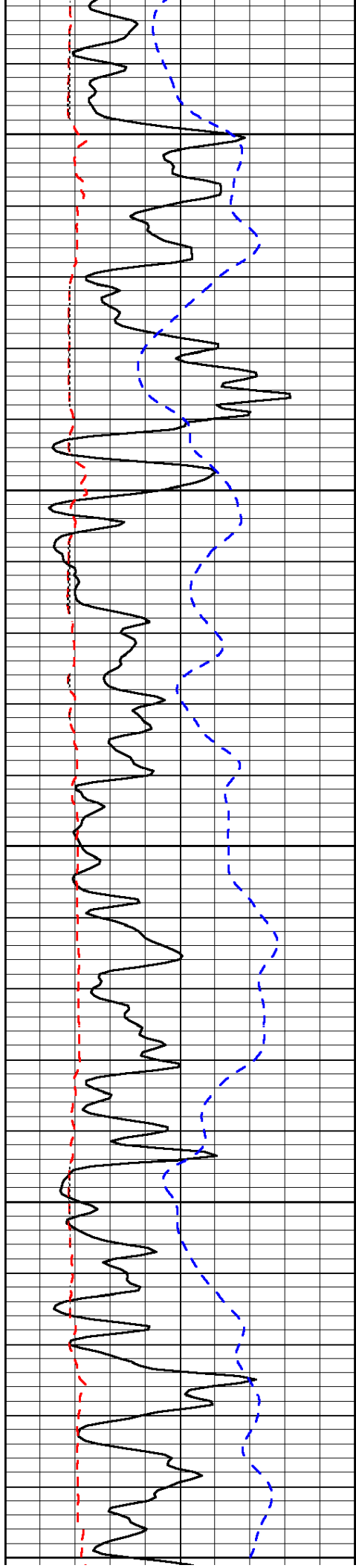
0	Micro Inverse 1 X 1	40
0	Micro Normal 2"	40
15000	Line Weight	0

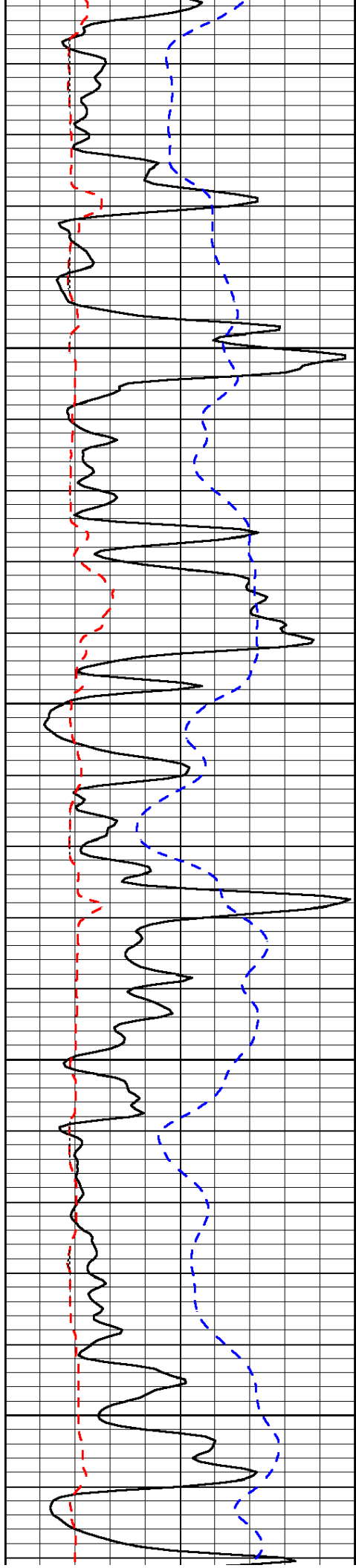
LSPD









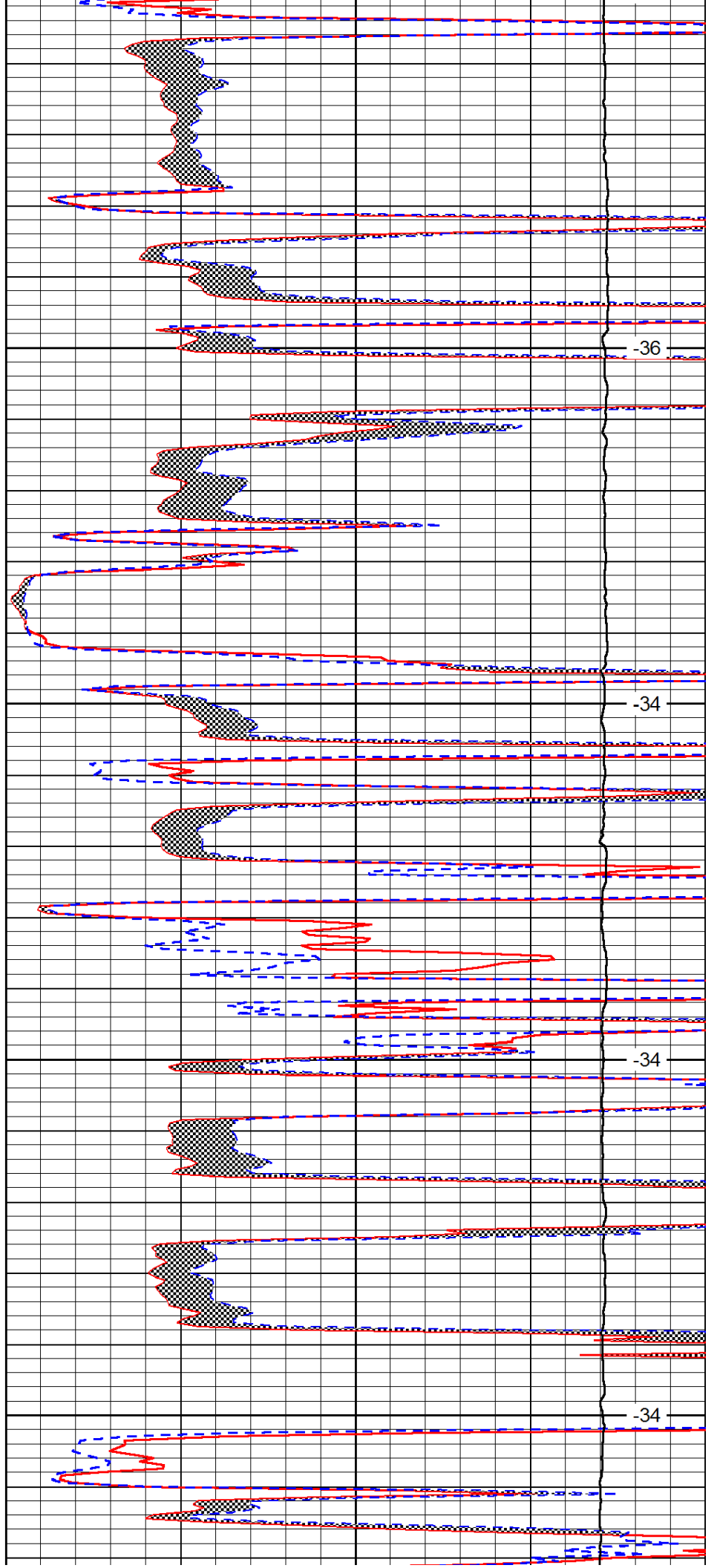


3500

3550

3600

3650

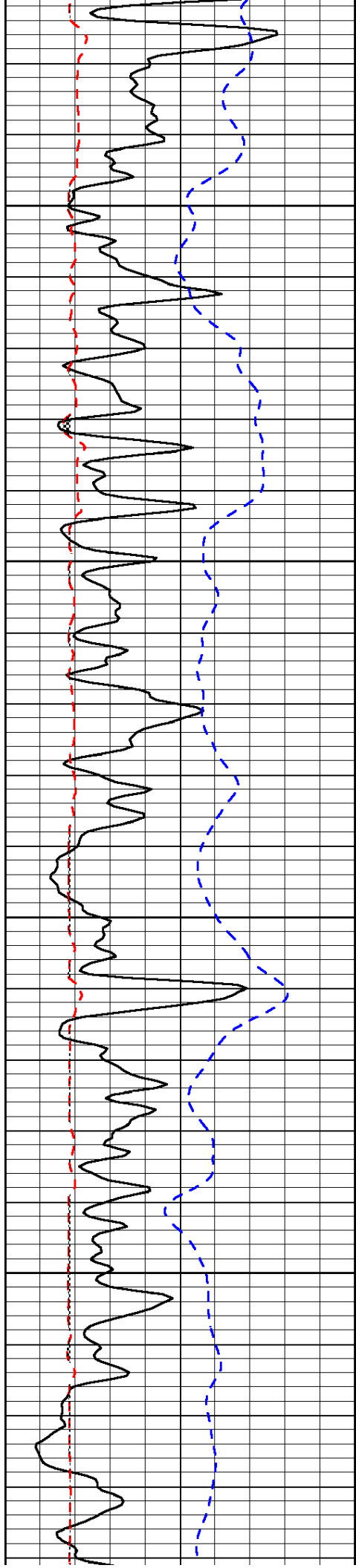


-36

-34

-34

-34

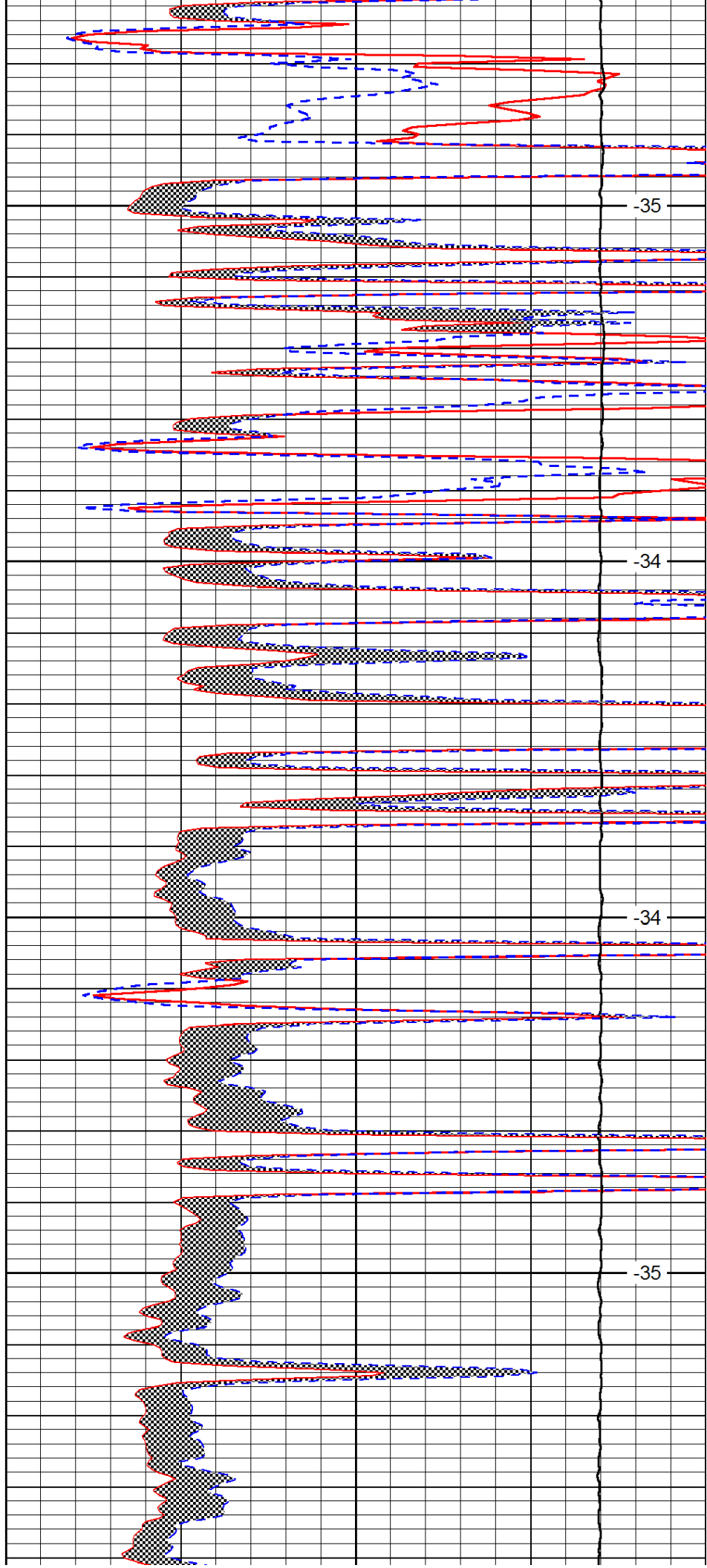


3700

3750

3800

3850

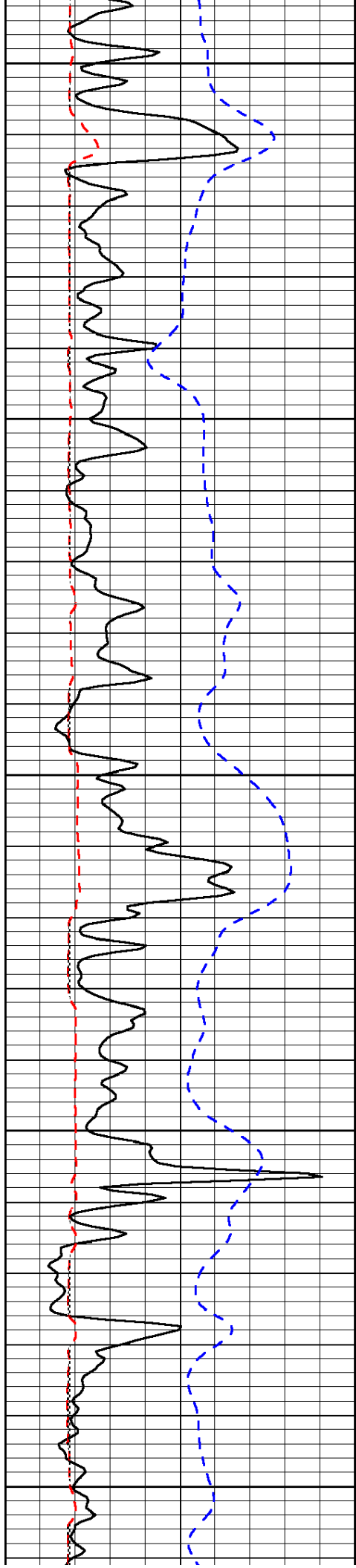


-35

-34

-34

-35



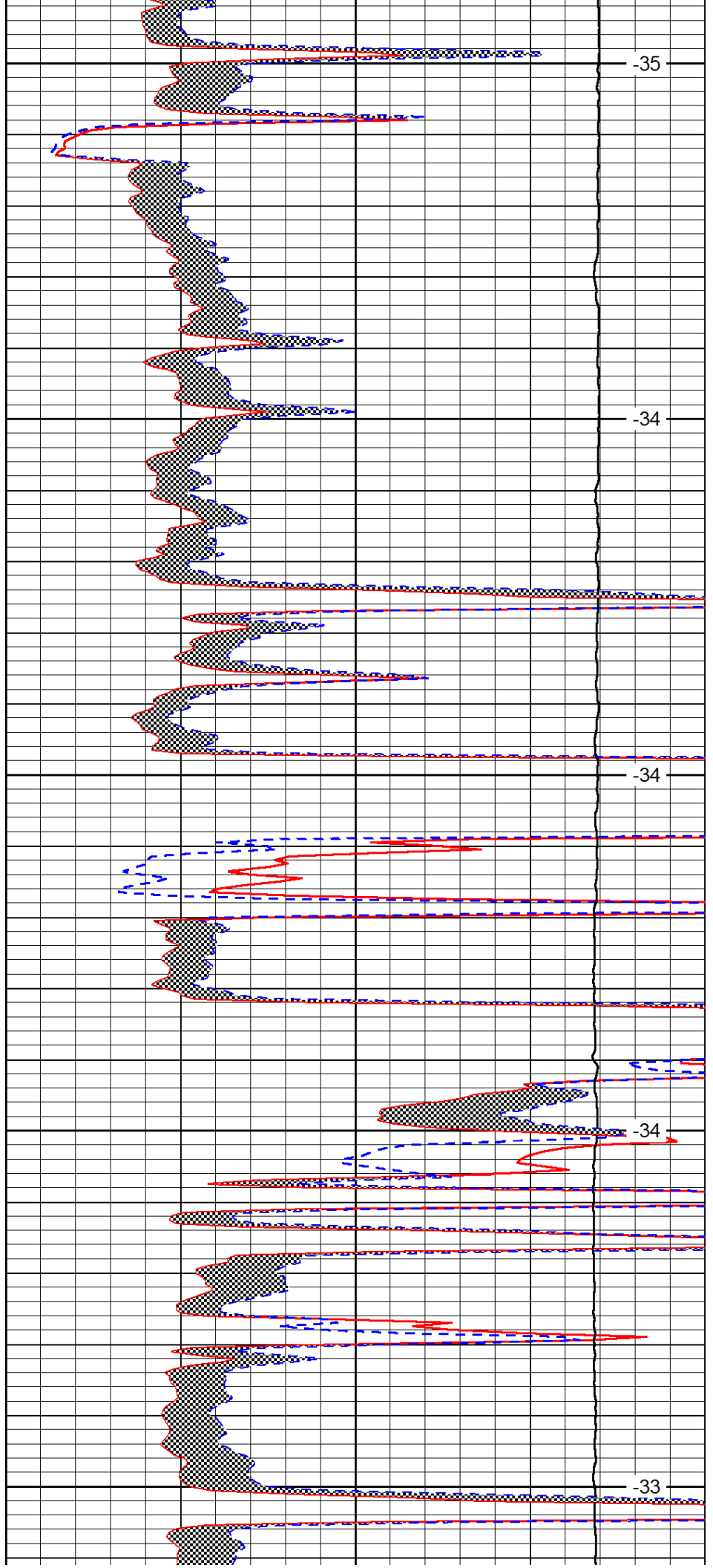
3900

3950

4000

4050

4100



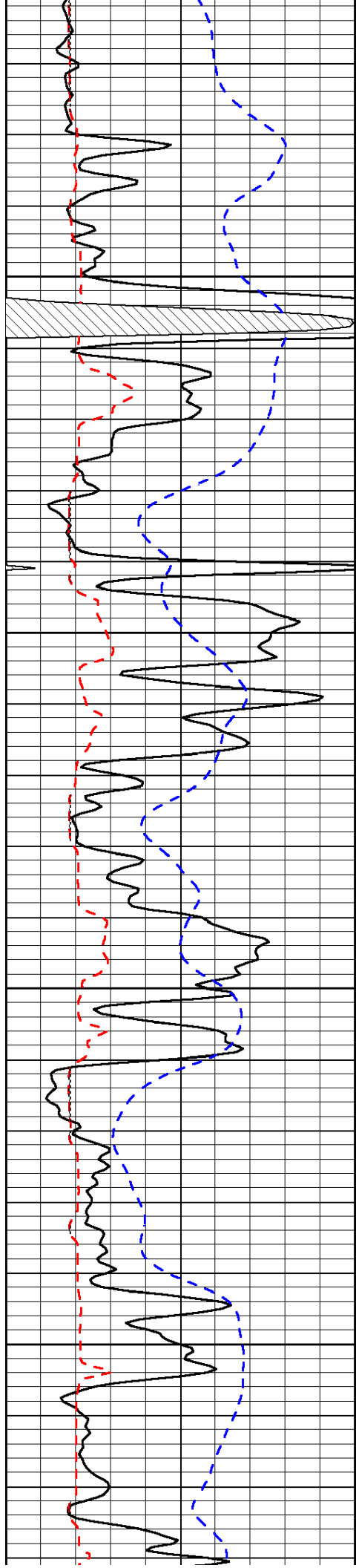
-35

-34

-34

-34

-33

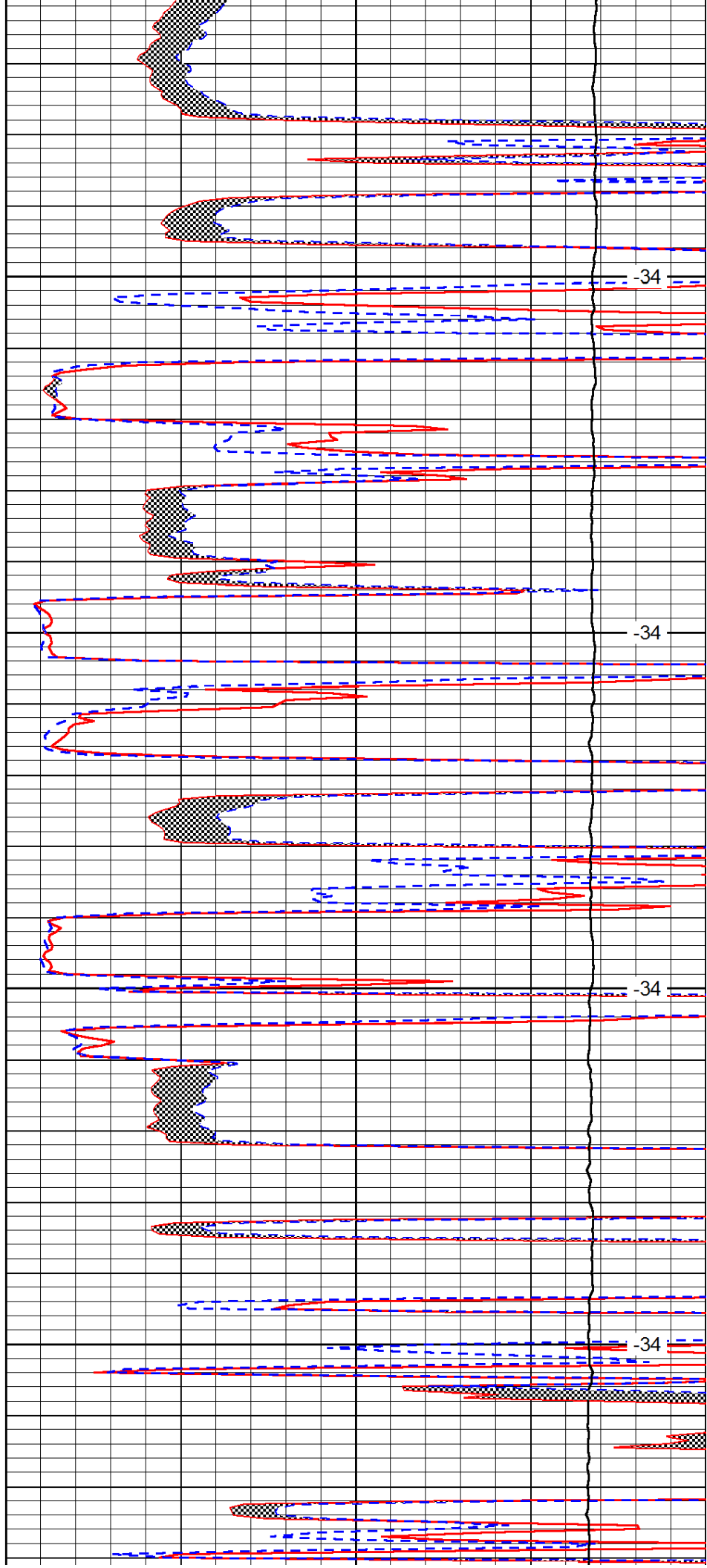


4150

4200

4250

4300

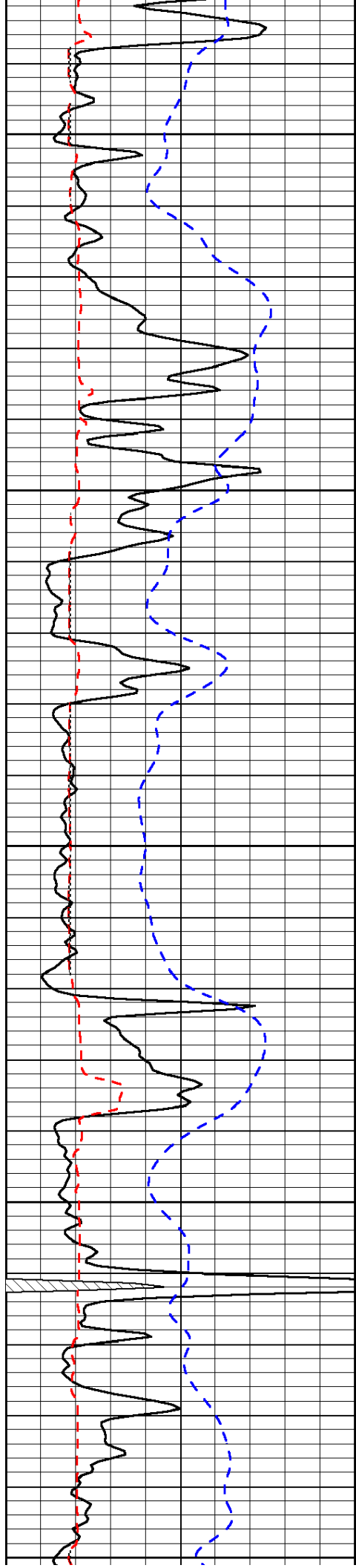


-34

-34

-34

-34



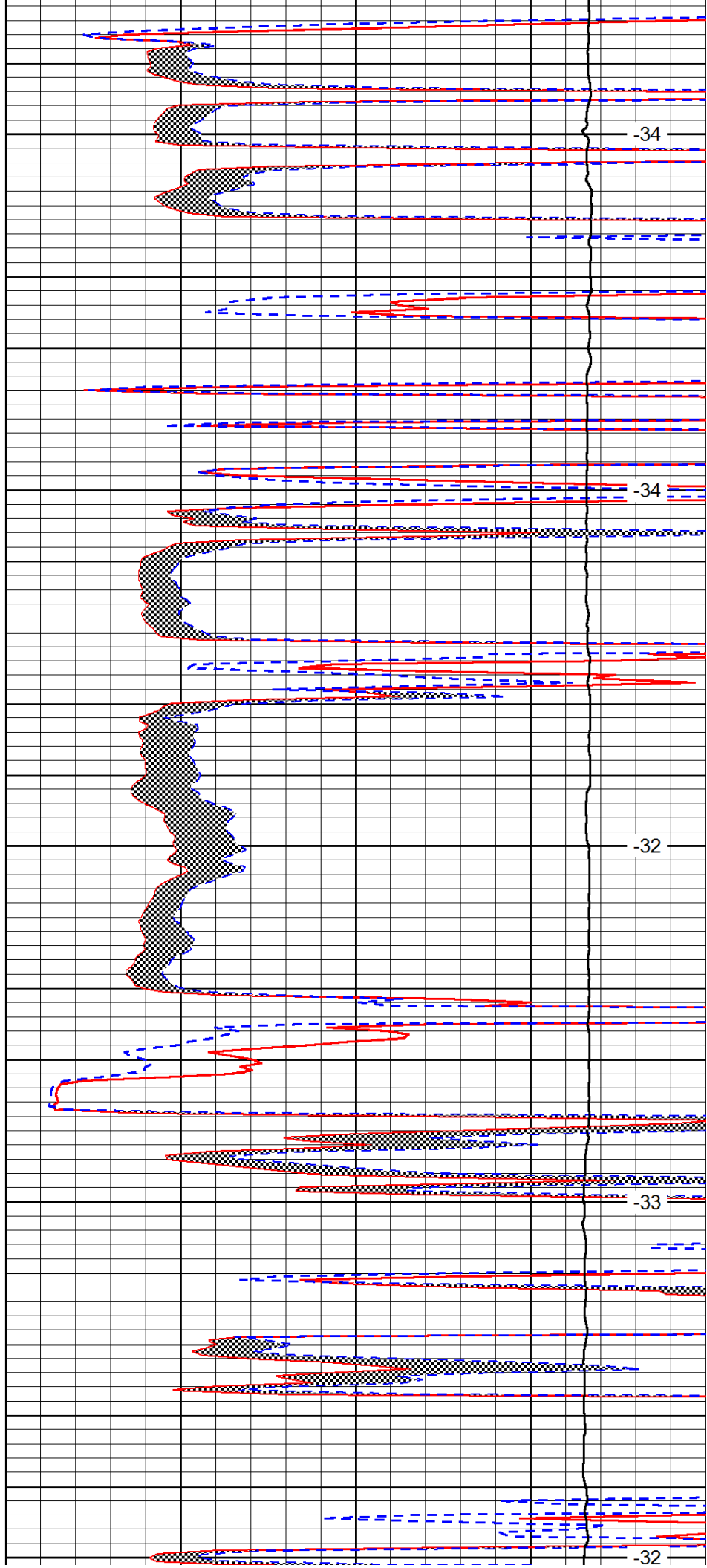
4350

4400

4450

4500

4550



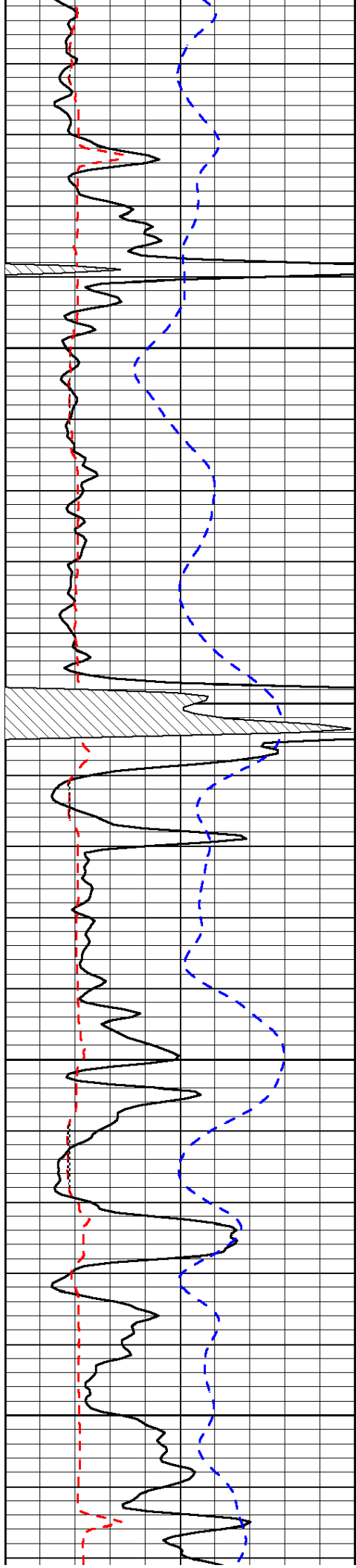
-34

-34

-32

-33

-32

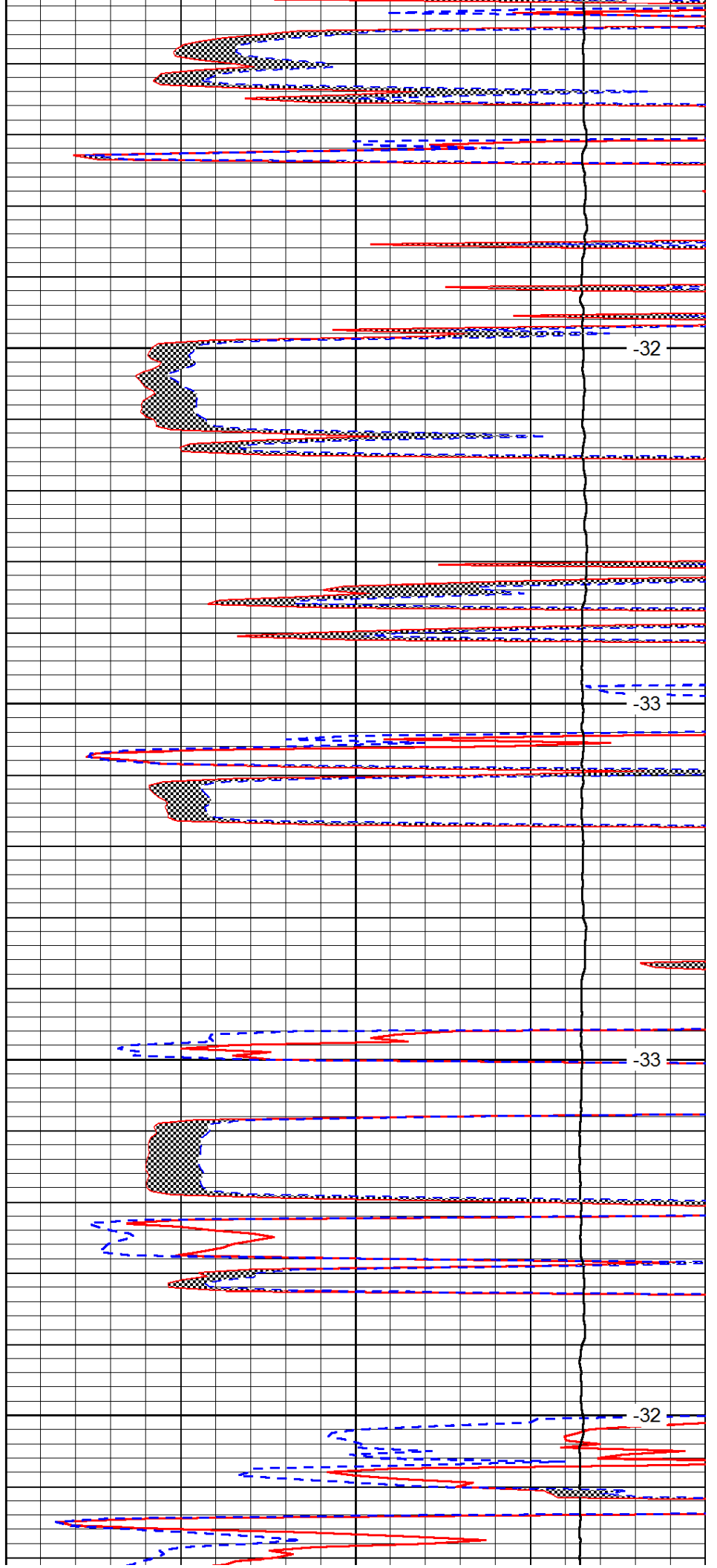


4600

4650

4700

4750

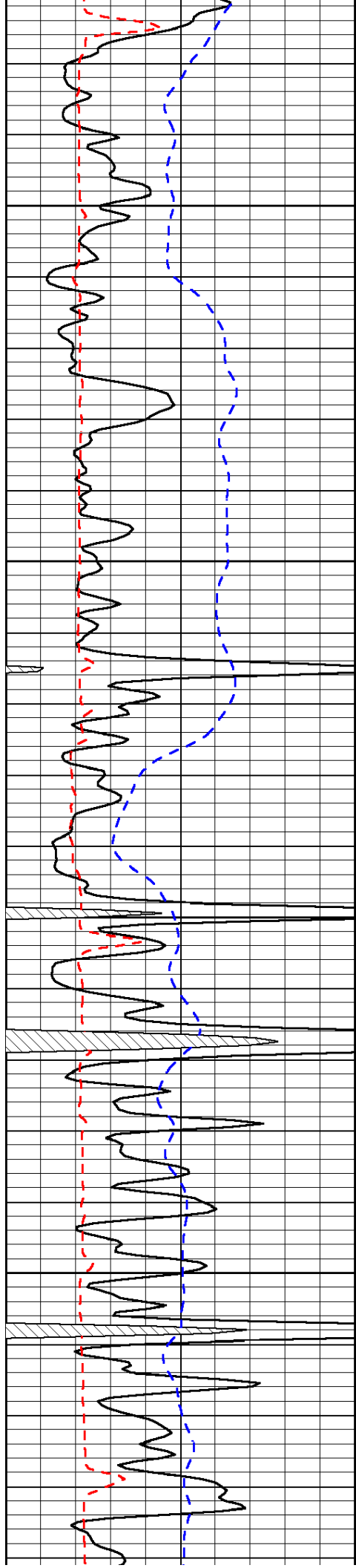


-32

-33

-33

-32

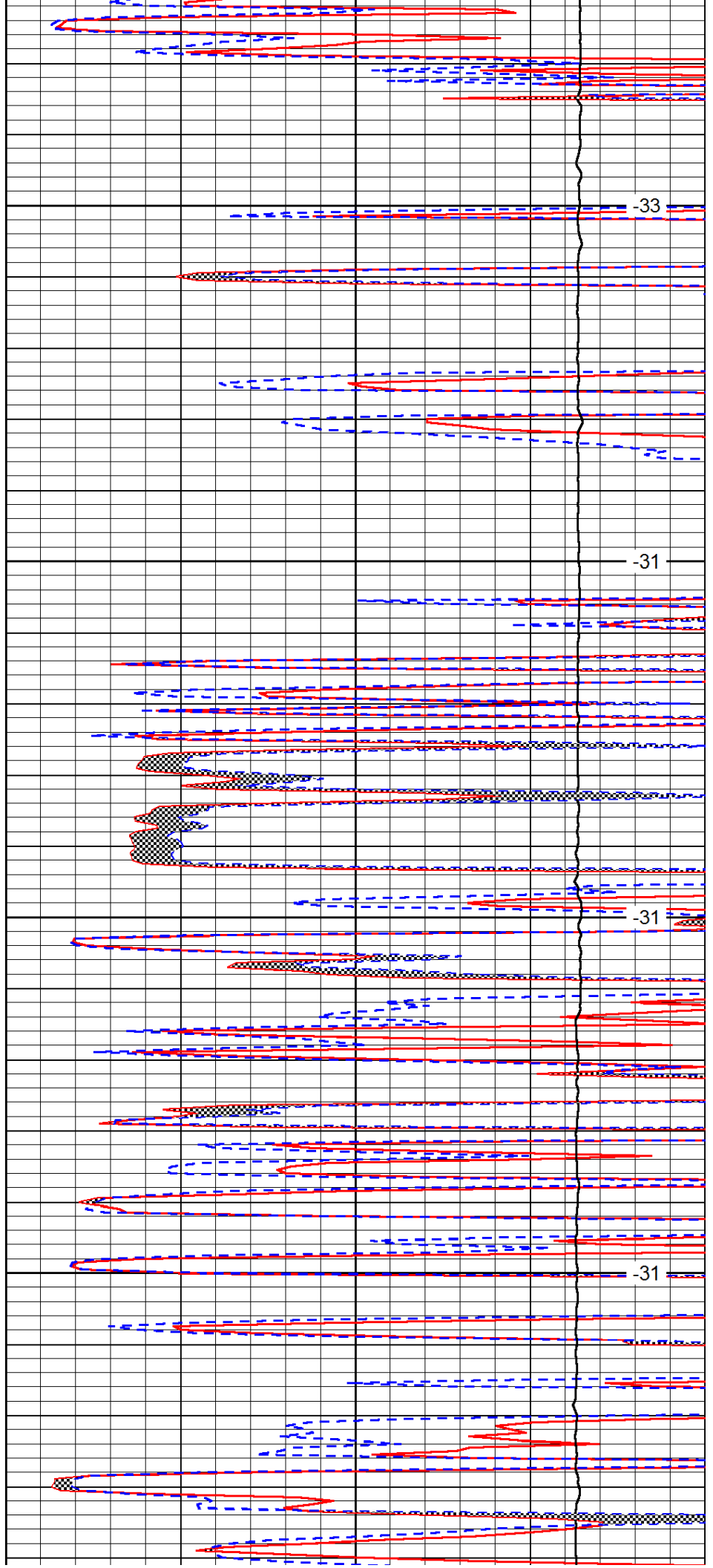


4800

4850

4900

4950

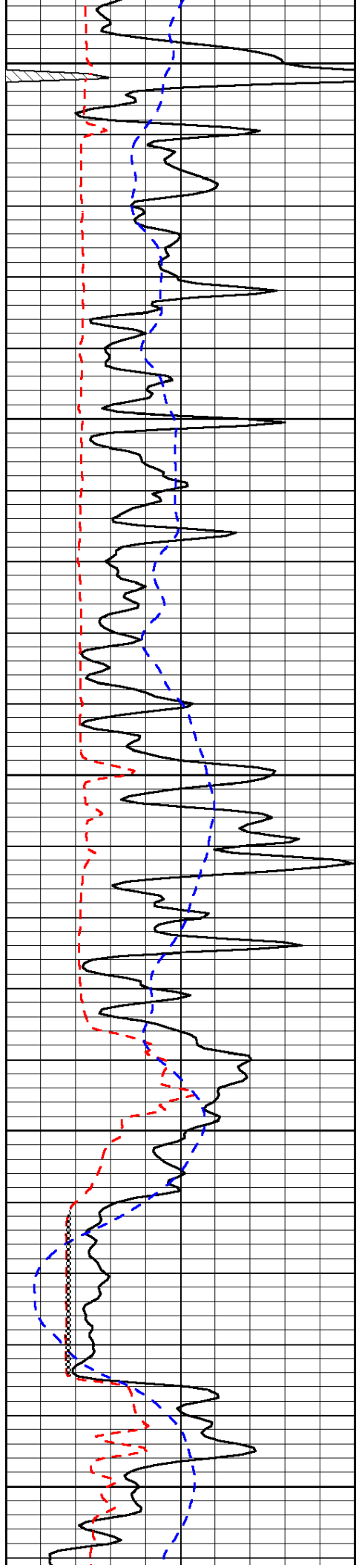


-33

-31

-31

-31



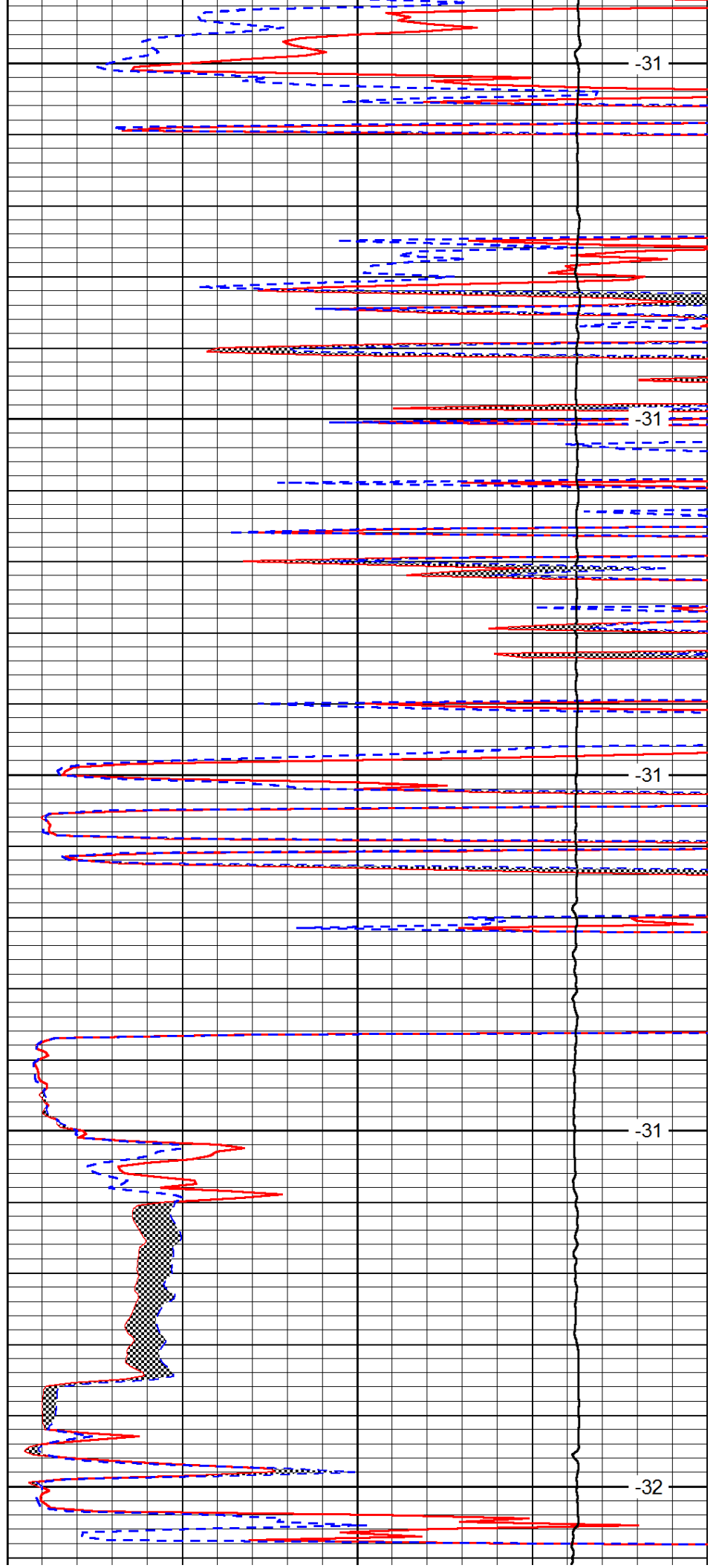
5000

5050

5100

5150

5200



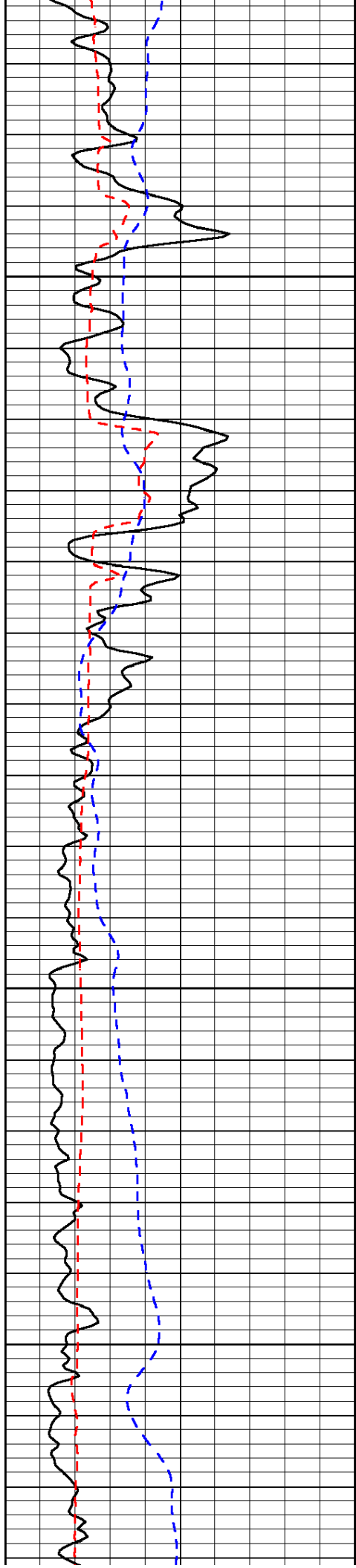
-31

-31

-31

-31

-32

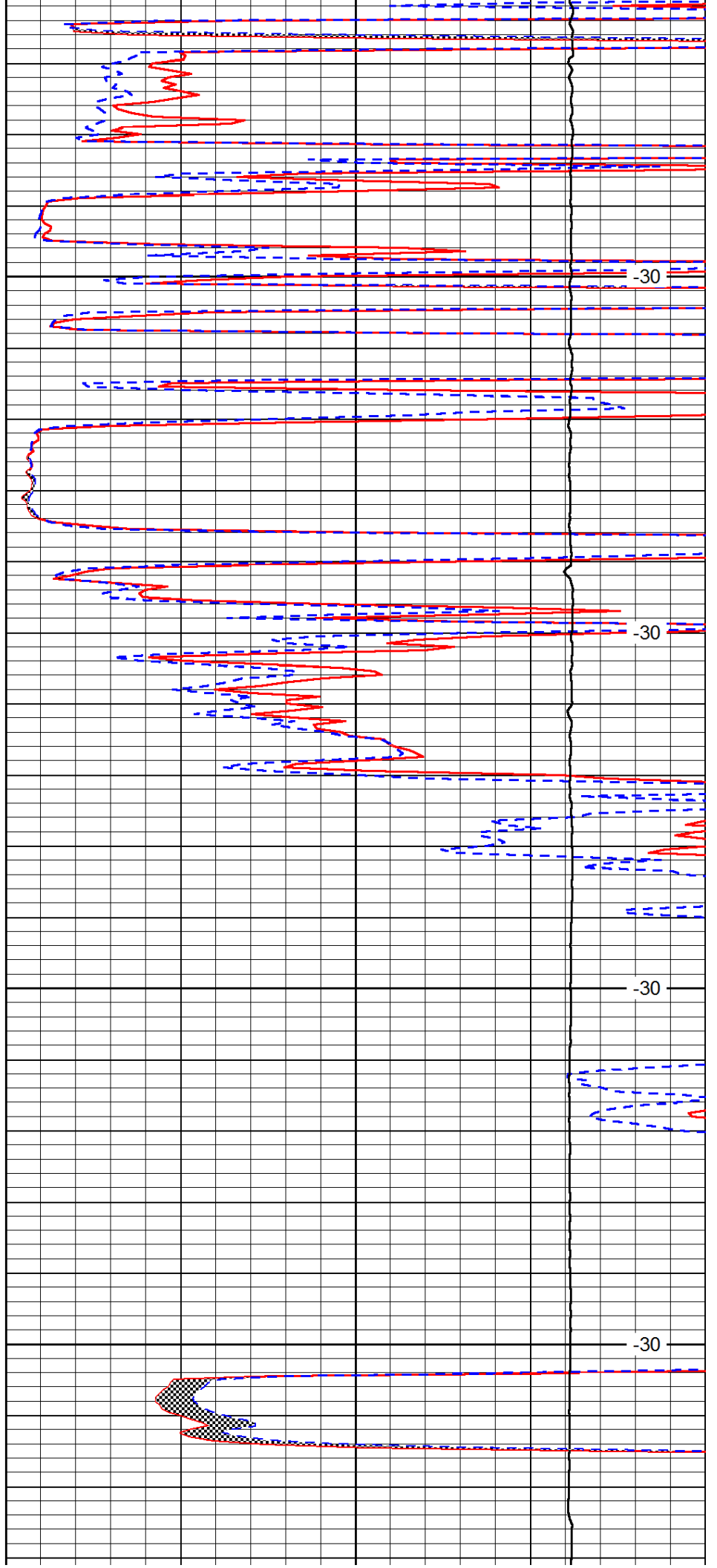


5250

5300

5350

5400

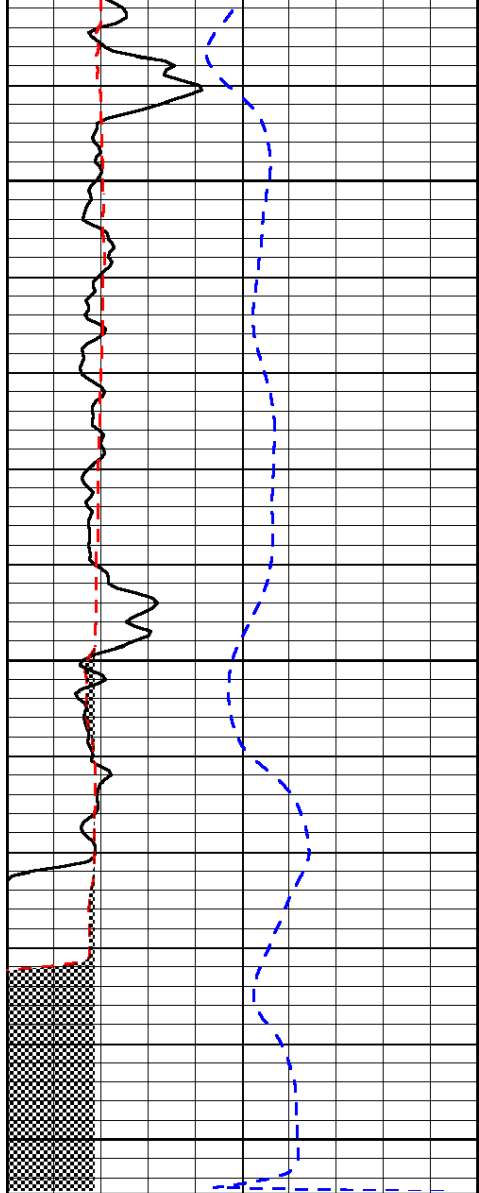


-30

-30

-30

-30

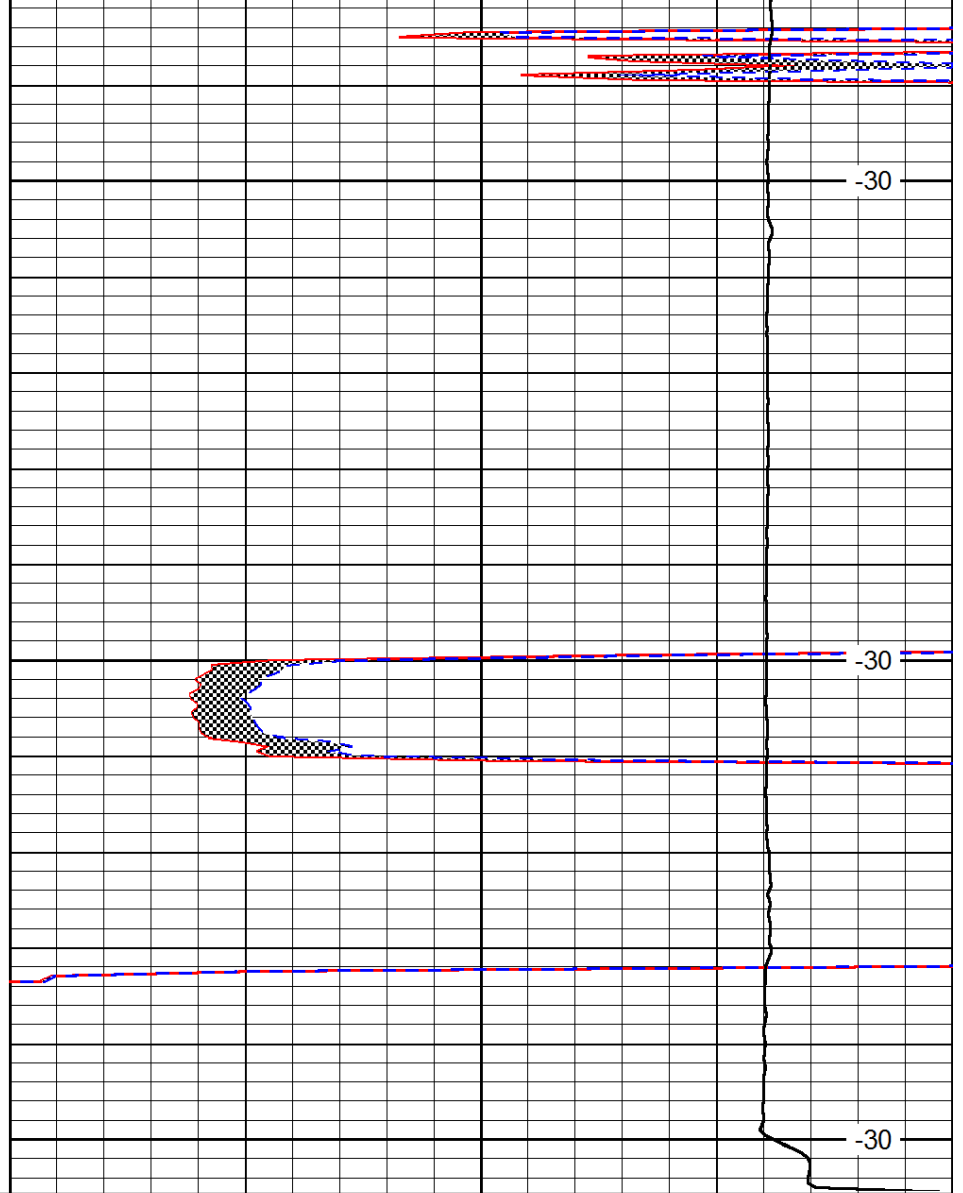


0	Gamma Ray	150
6	Micro Log Caliper (GAPI)	16
-200	SP (mV)	0

5450

5500

5550



0	Micro Inverse 1 X 1	40
0	Micro Normal 2''	40
15000	Line Weight	0

LSPD