



Pioneer Energy Services

Borehole Compensated Sonic Log

15-069-20,393-00-00

API No.	15-069-20,393-00-00		
Company	Falcon Exploration, Inc.		
Well	James Koehn No.1-31(NW)		
Field	Gray		
County	Gray		
State	Kansas		
Location	E/2 SW SE NW1/4 2310' FNL & 1670' FWL		
Sec: 31	Twp: 28S	Rge: 30W	Elevation 2829
Permanent Datum	Ground Level	Kelly Bushing	13 Ft. Above Perm. Datum
Log Measured From	Kelly Bushing		
Drilling Measured From	Kelly Bushing		
Date	9/19/2012		
Run Number	Two		
Type Log	BHC Sonic		
Depth Driller	5550		
Depth Logger	5549		
Bottom Logged Interval	5538		
Top Logged Interval	1850		
Type Fluid In Hole	Chemical		
Salinity, PPM CL	4,800		
Density	9.05		
Level	Full		
Max. Rec. Temp. F	132		
Operating Rig Time	6 Hours		
Equipment -- Location	17 Hays		
Recorded By	C. Desaire		
Witnessed By	Dave Williams		

Borehole Record				Casing Record			
Run No.	Bit	From	To	Size	Wgt.	From	To
1	12.25	00	1863	8.625	24#	00	1863
2	7.875	1863	5550				

<<< Fold Here >>>

All interpretations are opinions based on inferences from electrical or other measurements and we cannot and do not guarantee the accuracy or correctness of any interpretation, and we shall not, except in the case of gross or willful negligence on our part, be liable or responsible for any loss, costs, damages, or expenses incurred or sustained by anyone resulting from any interpretation made by any of our officers, agents or employees. These interpretations are also subject to our general terms and conditions set out in our current Price Schedule.

Comments

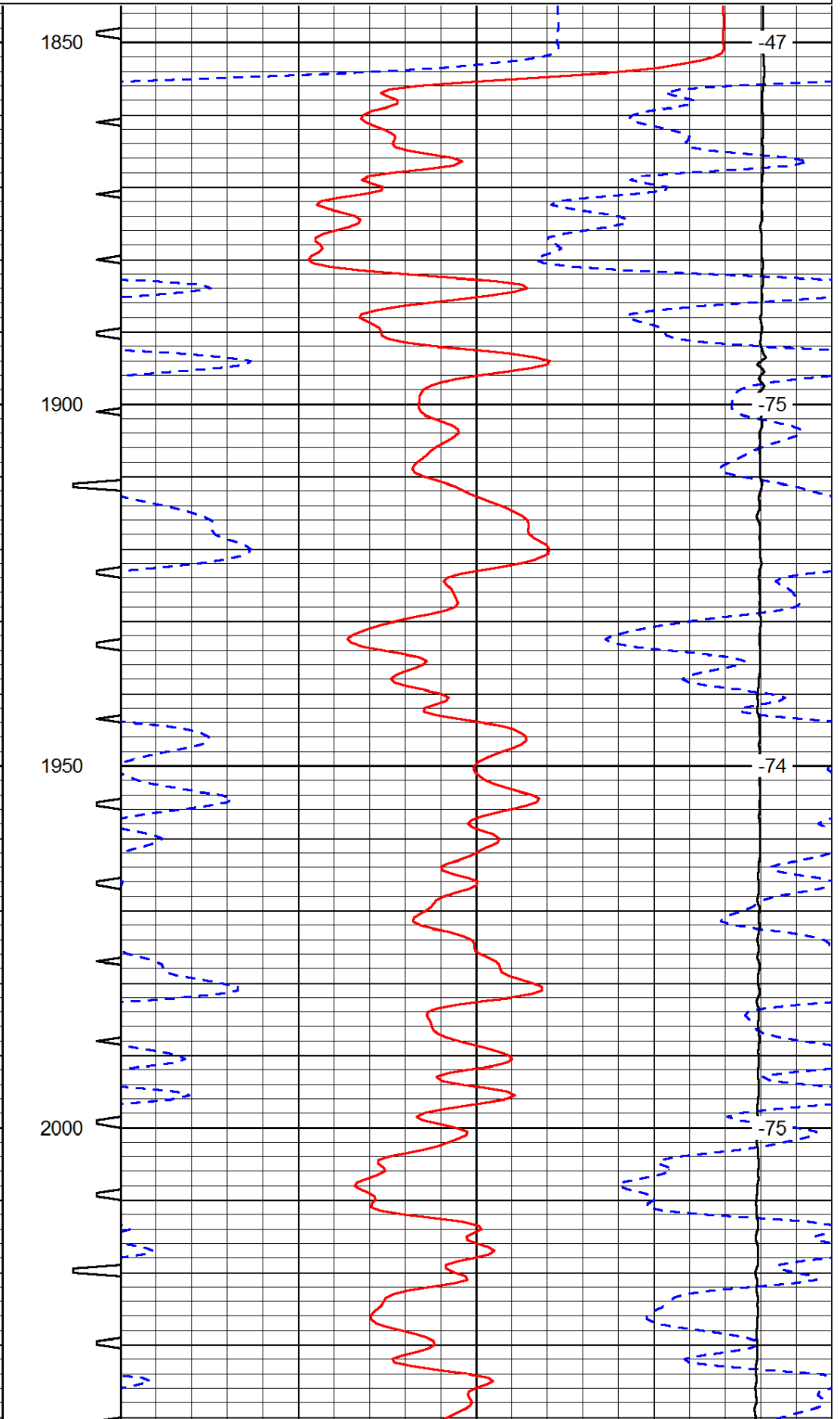
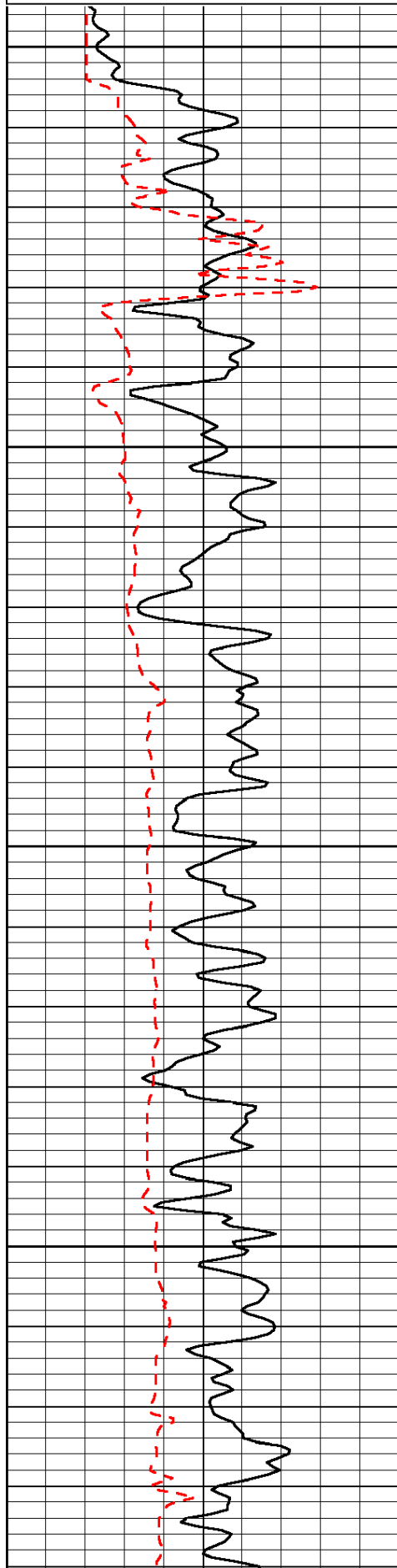
Thank you for using Pioneer Energy Services
www.pioneerenergy.com
 785 625 3858

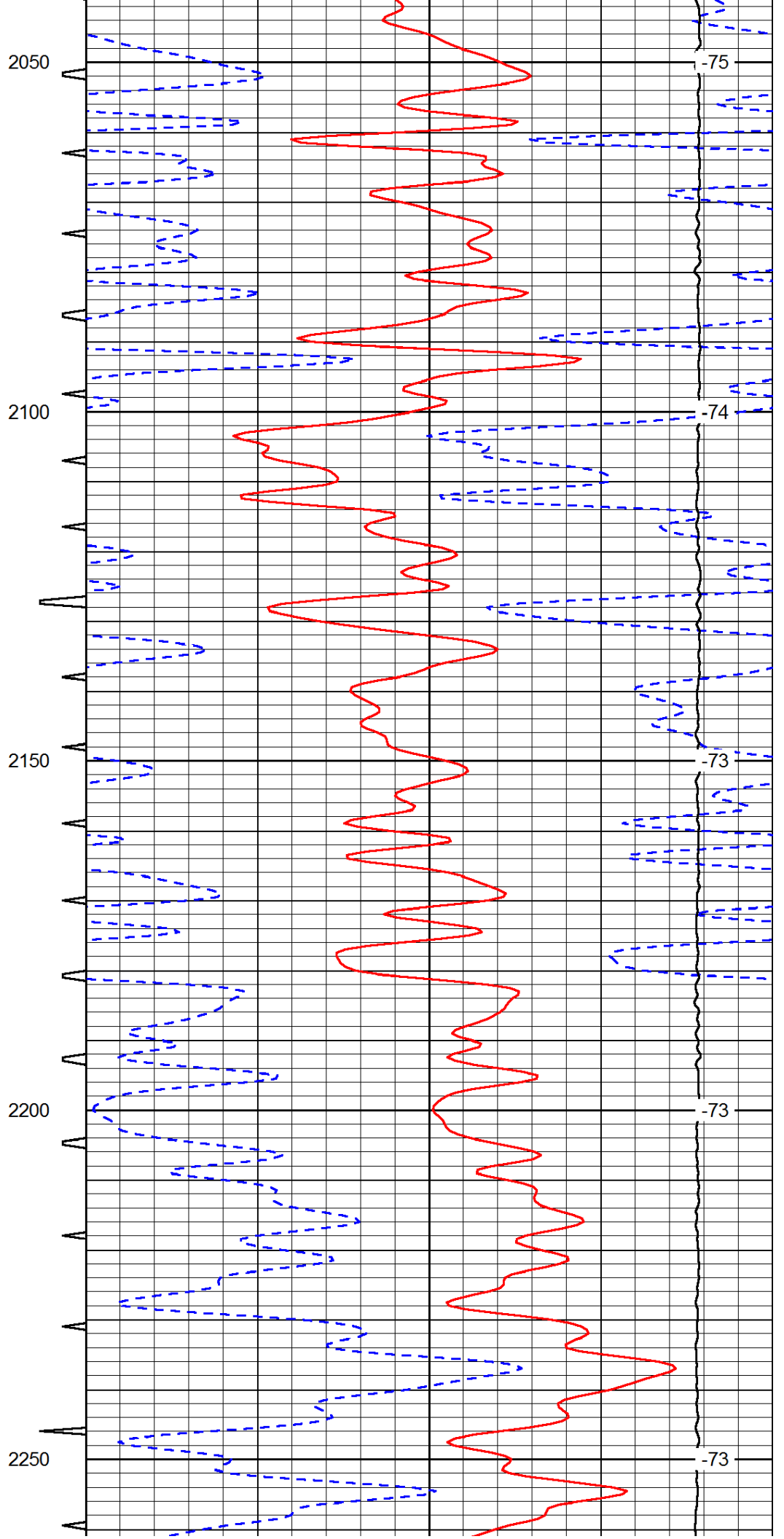
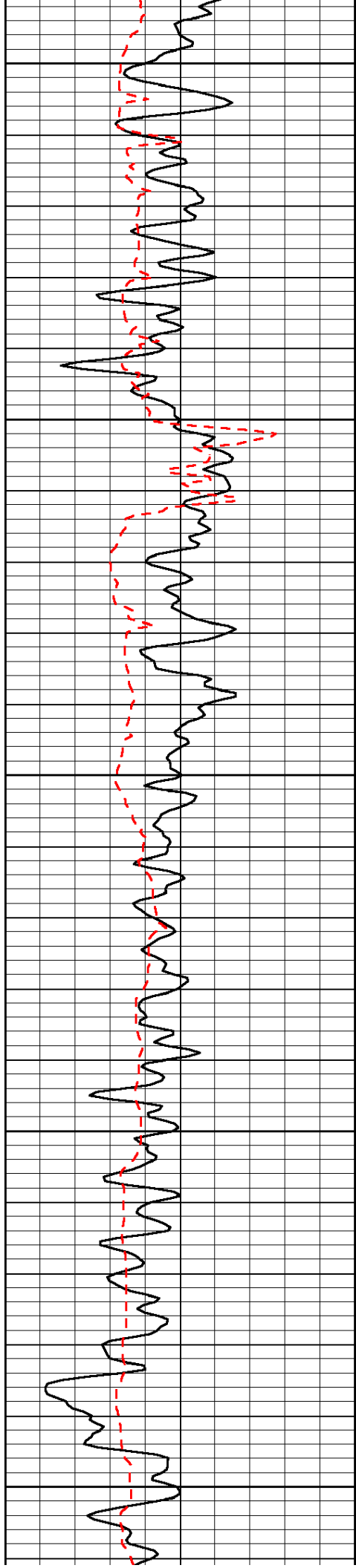
 Montezuma KS, W to Hwy 144,
 5 W, 1/2 N, E Into

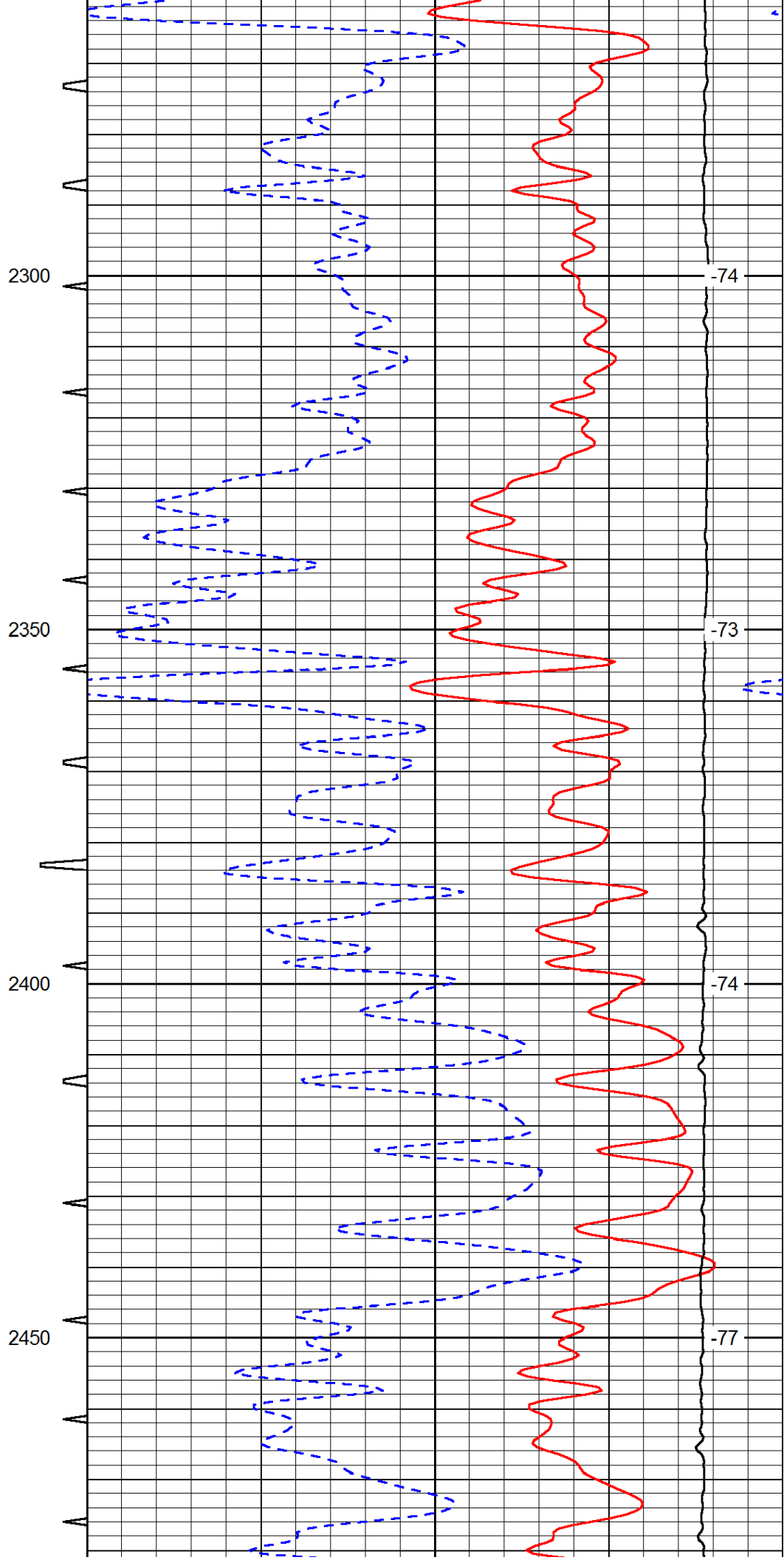
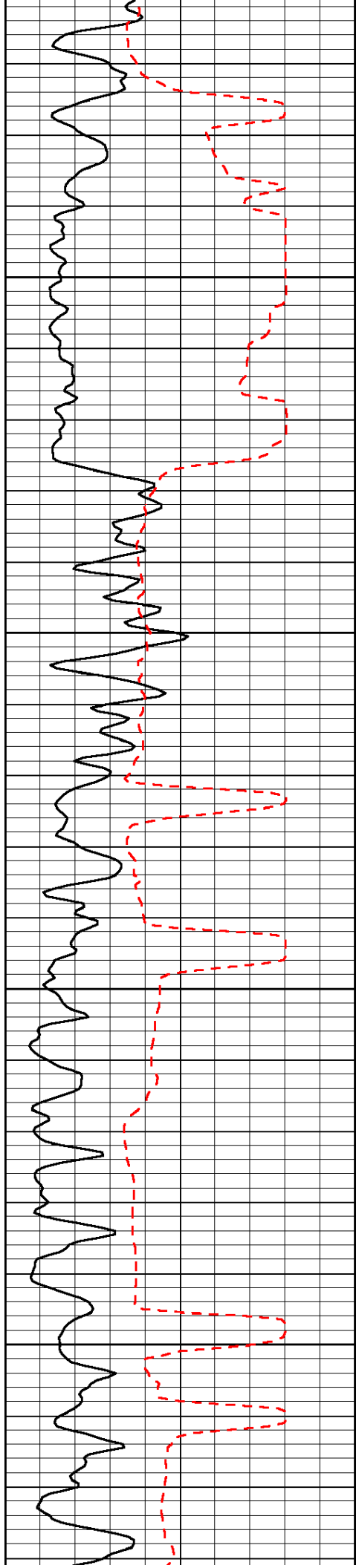
Database File: c:\warrior\data\falcon_james koehn #1-31(nw)\falhd.db
 Dataset Pathname: dil/falstk
 Presentation Format: sonic
 Dataset Creation: Wed Sep 19 09:43:39 2012
 Charted by: Depth in Feet scaled 1:240

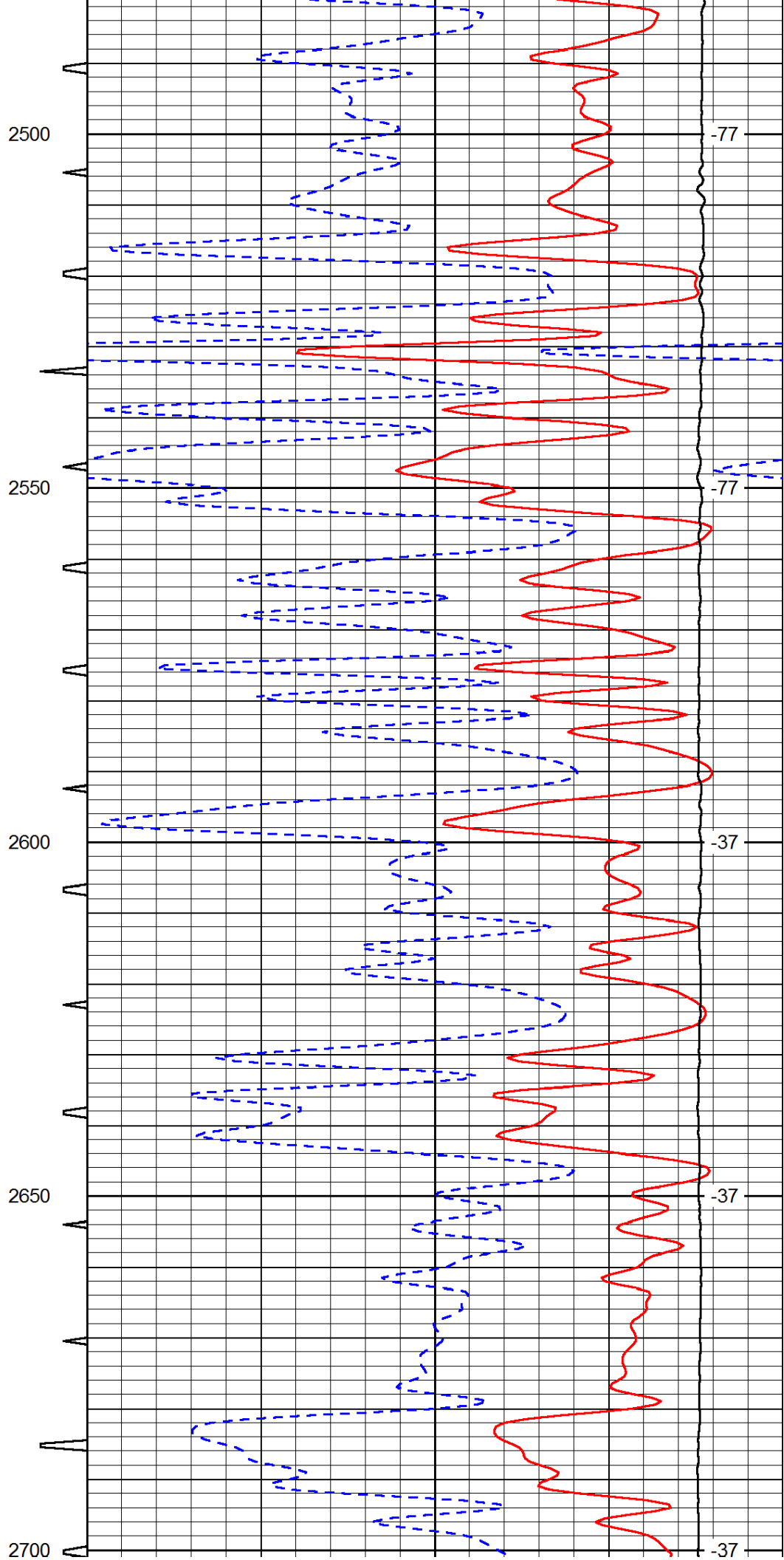
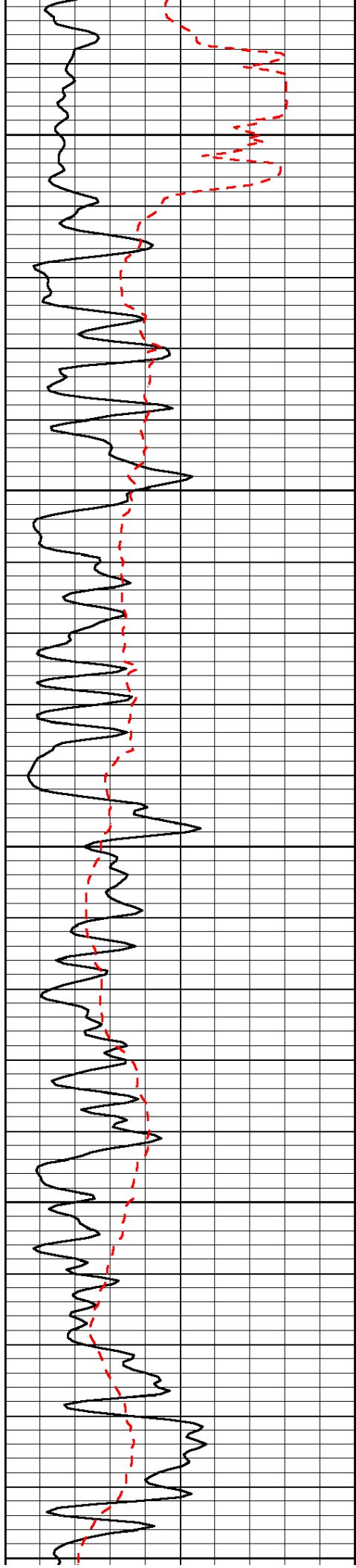
0	Gamma Ray	150	Sonic Int	140	Delta Time (usec/ft)	40
150	Gamma Ray	300	5	0	SPOR	-10
6	Caliper (GAPI)	16		15000	LTEN (lb)	0

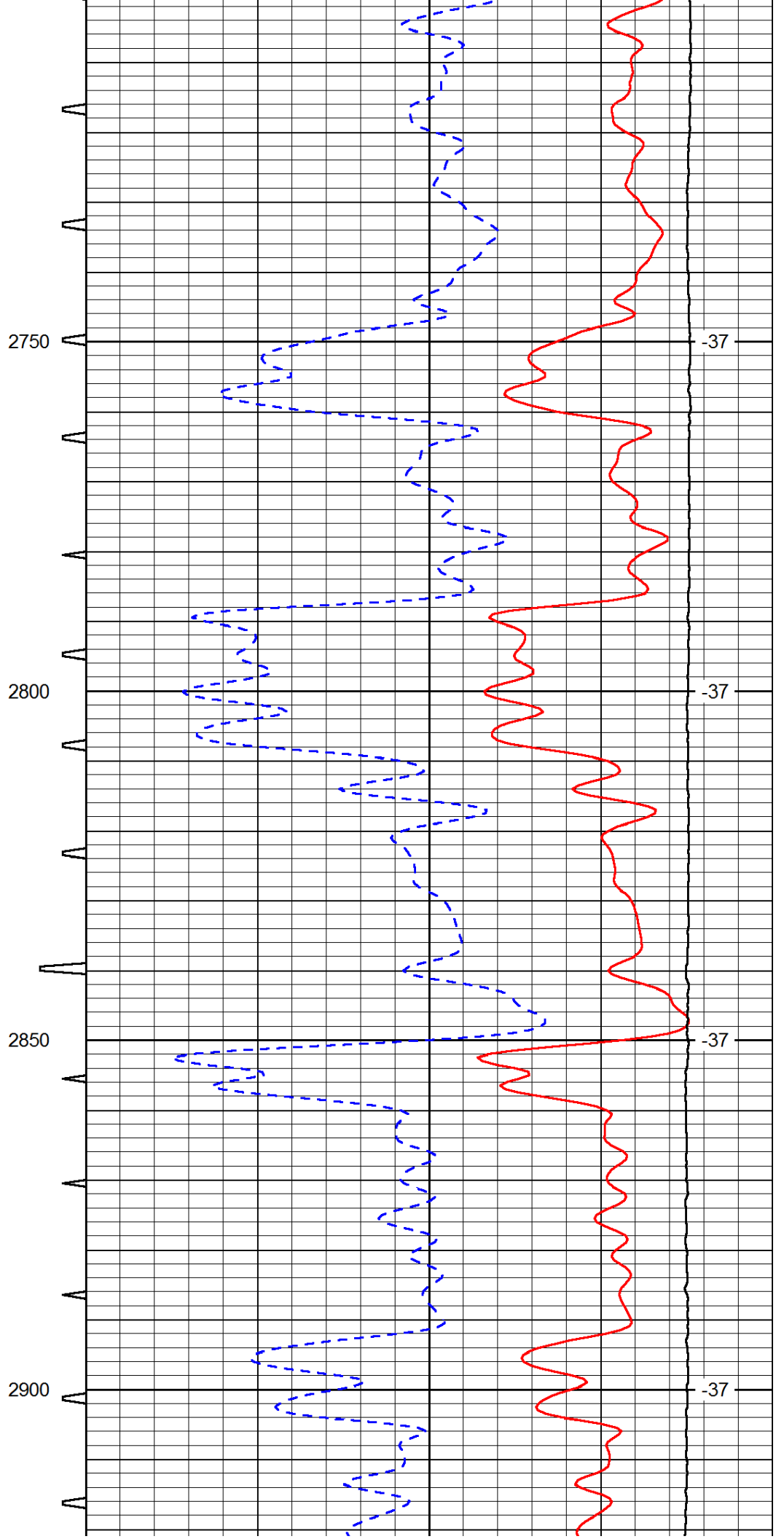
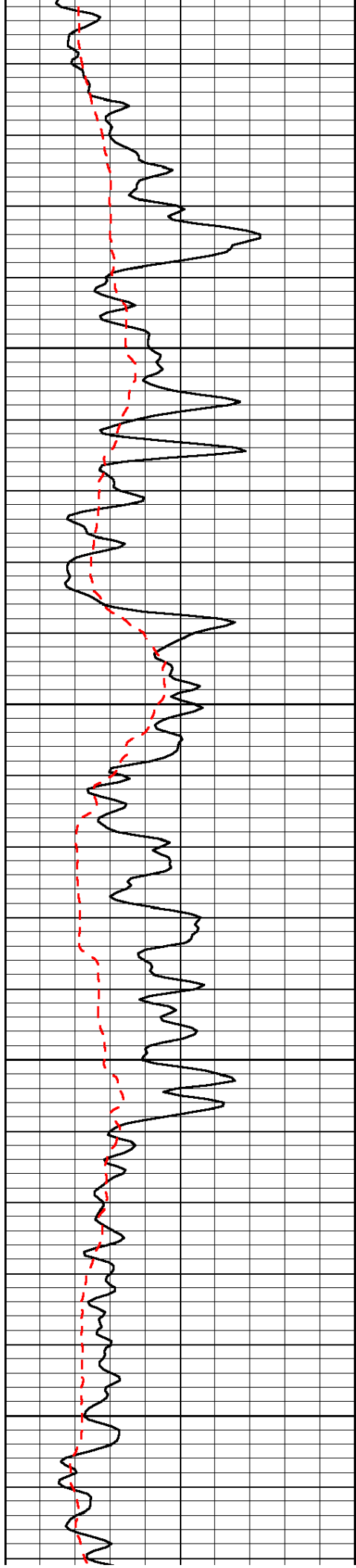
LSPD

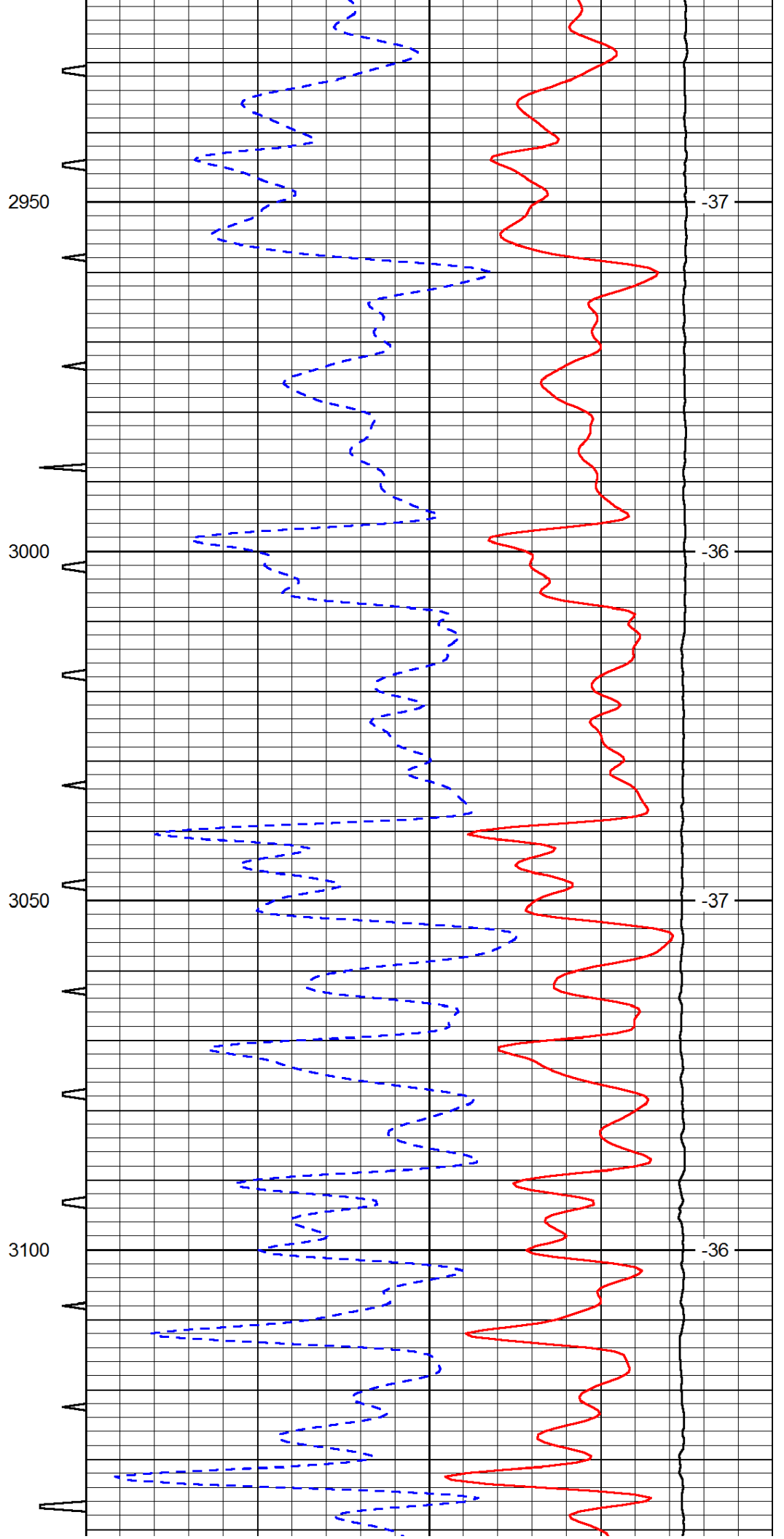
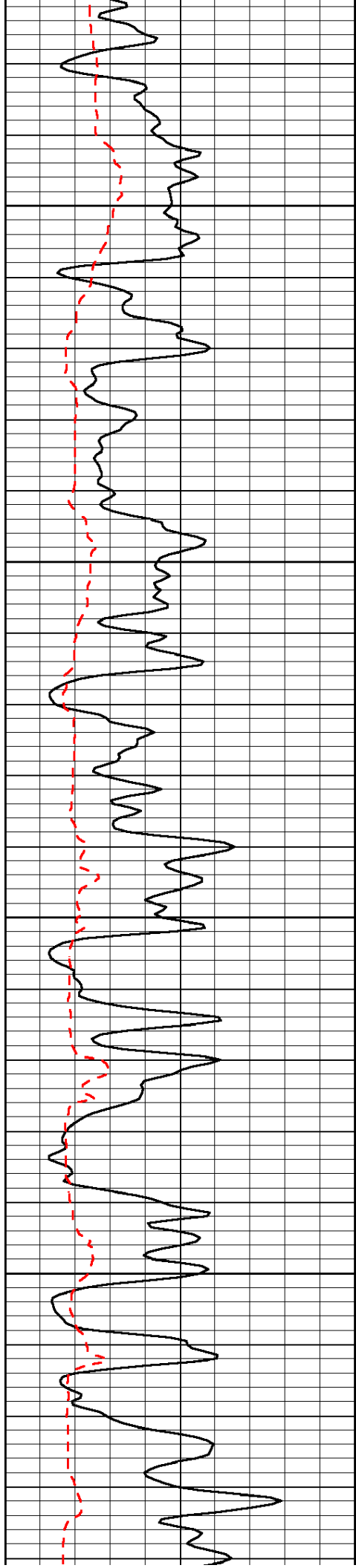


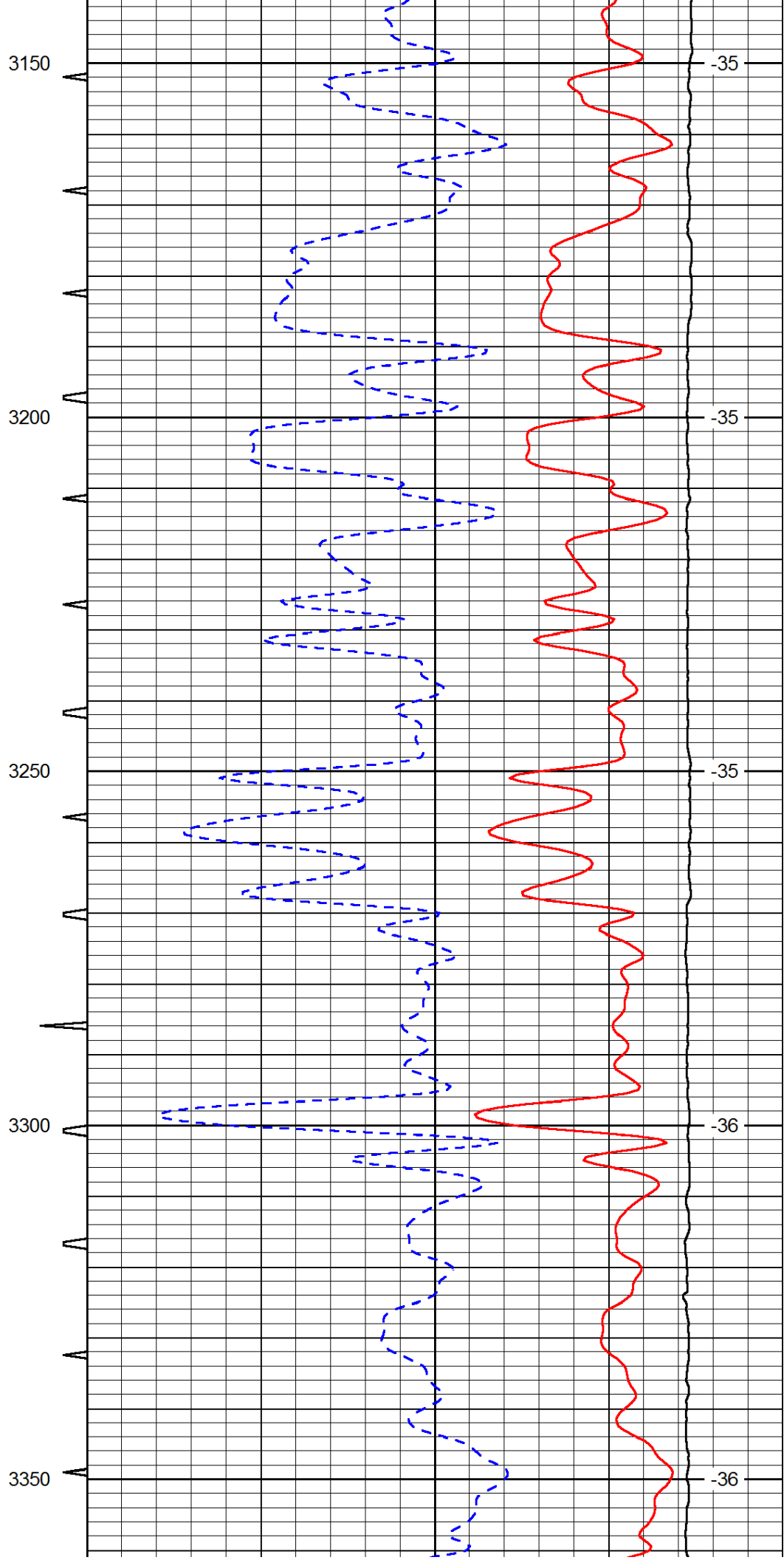
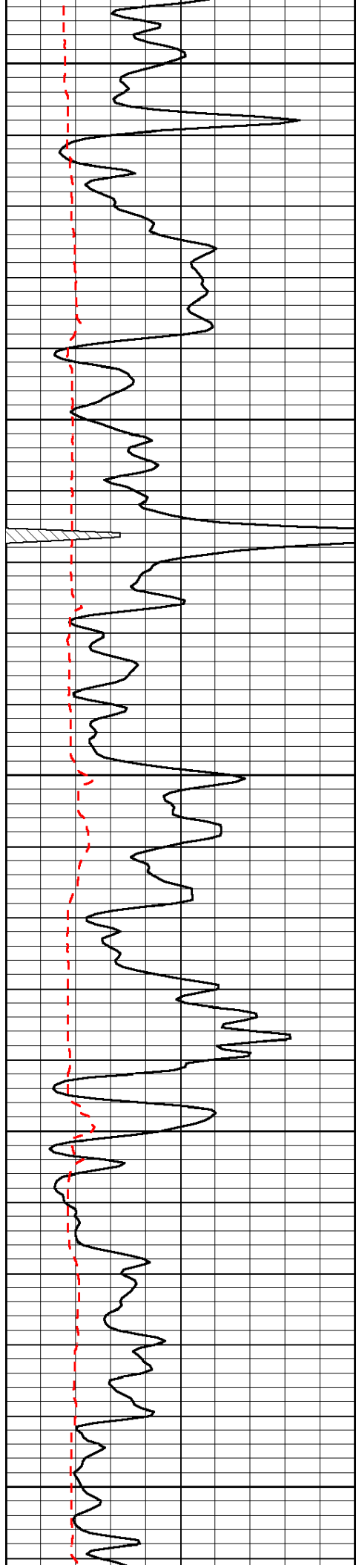


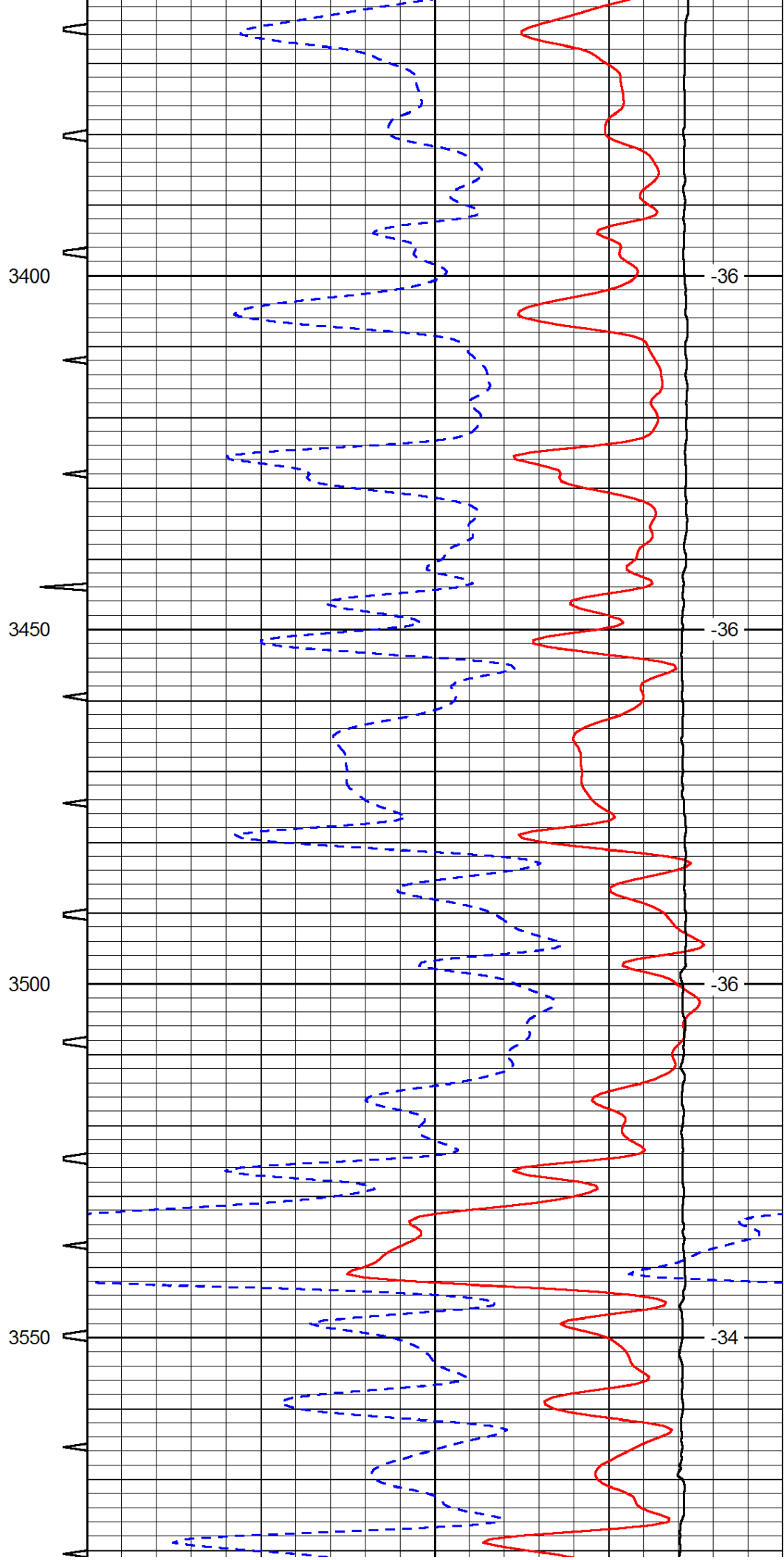
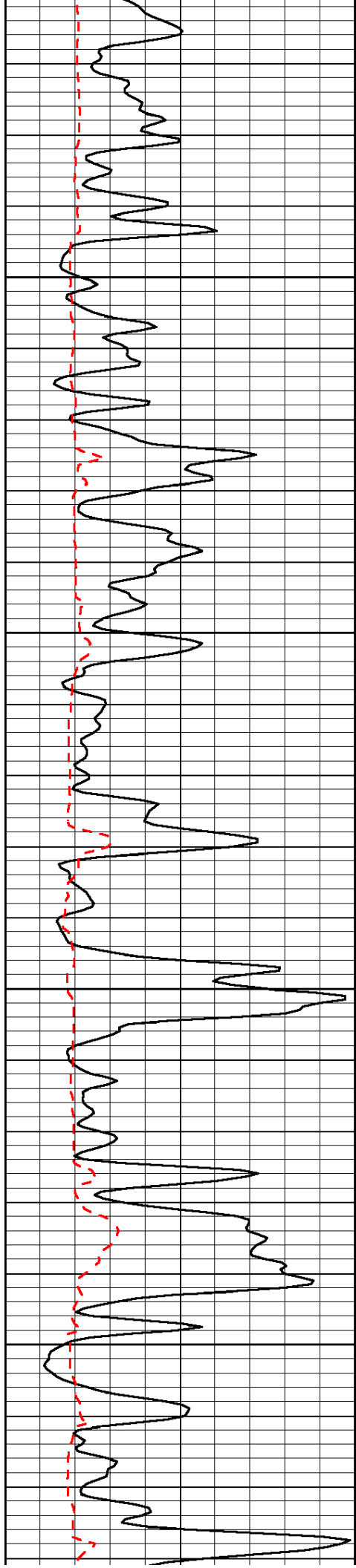


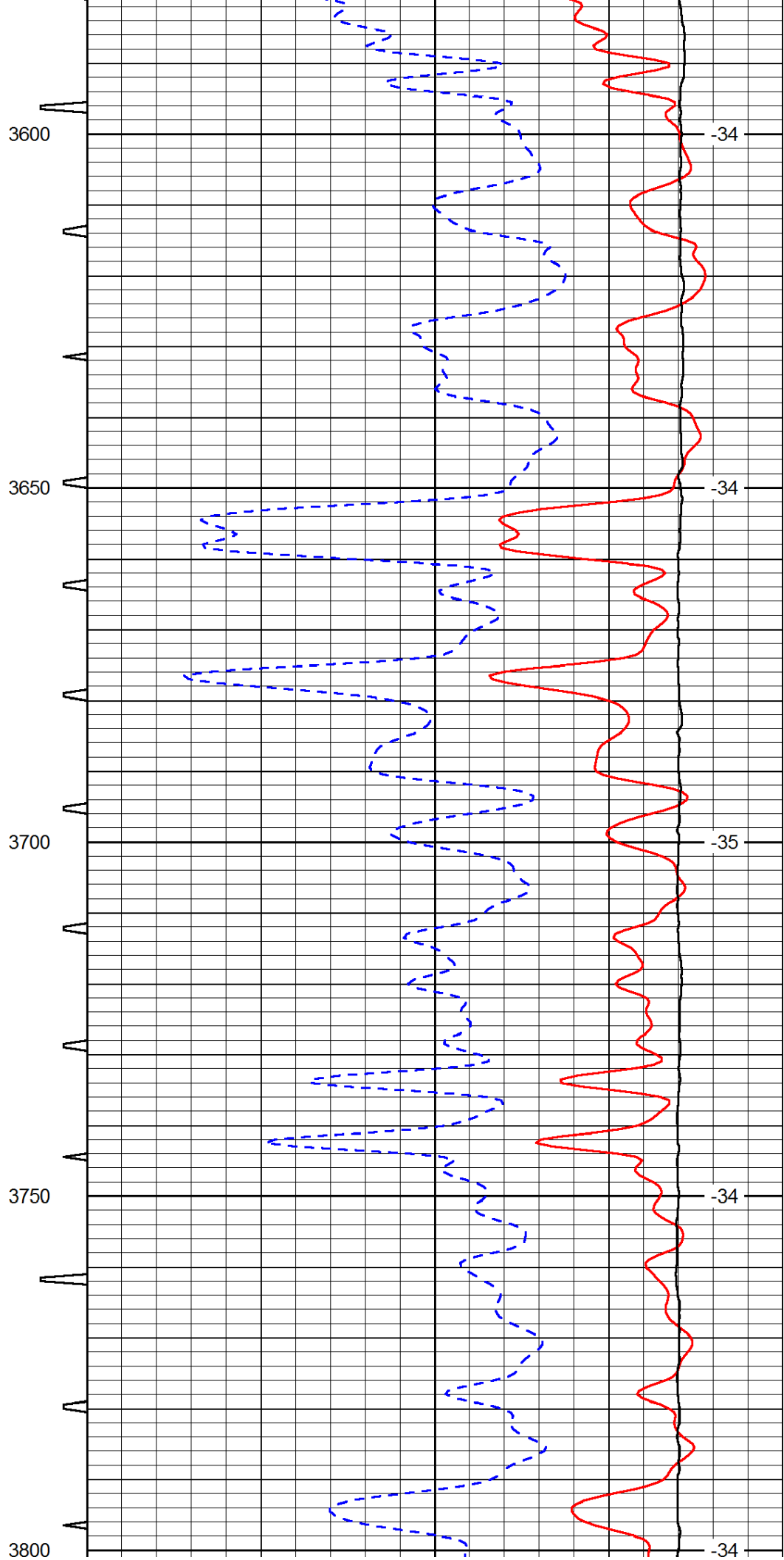
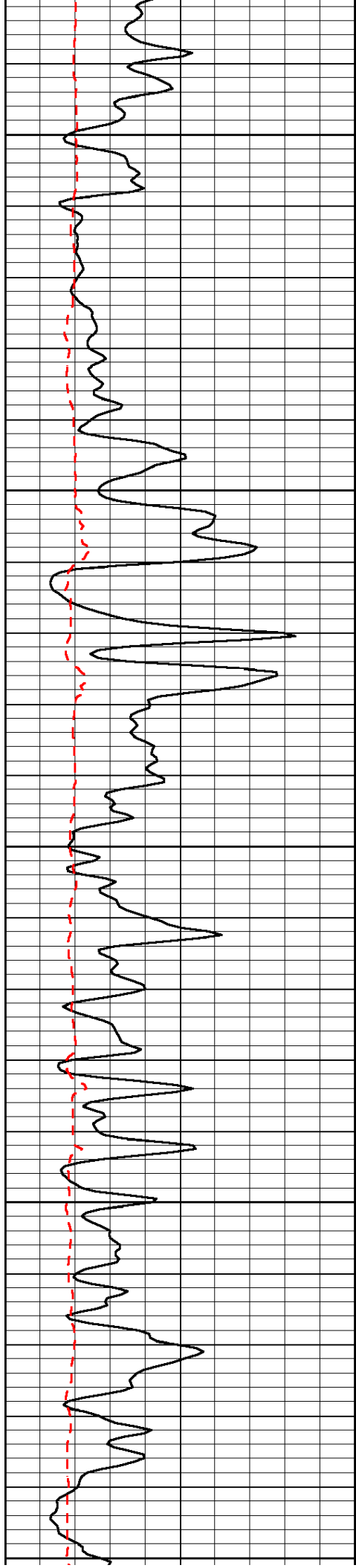


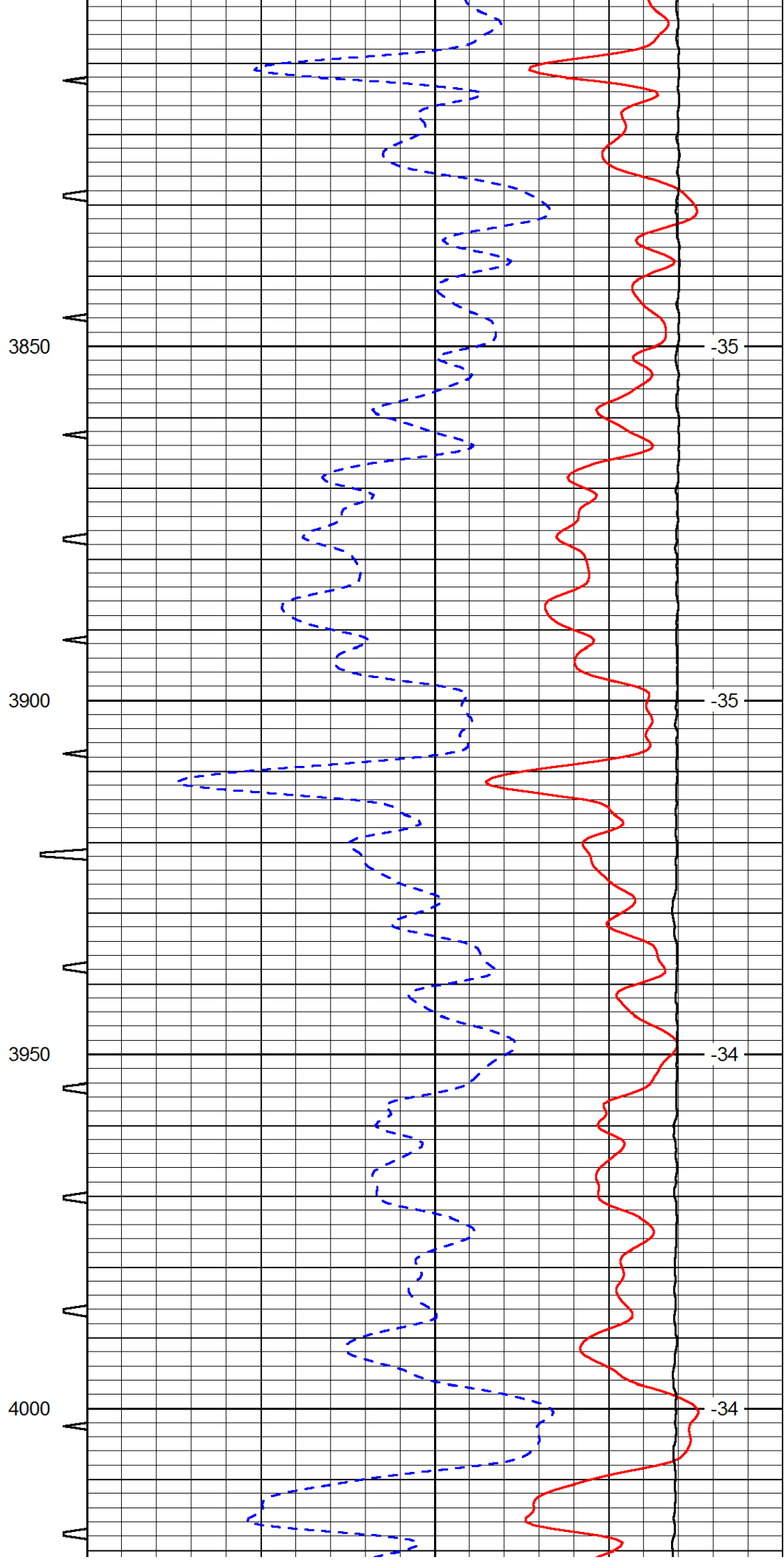
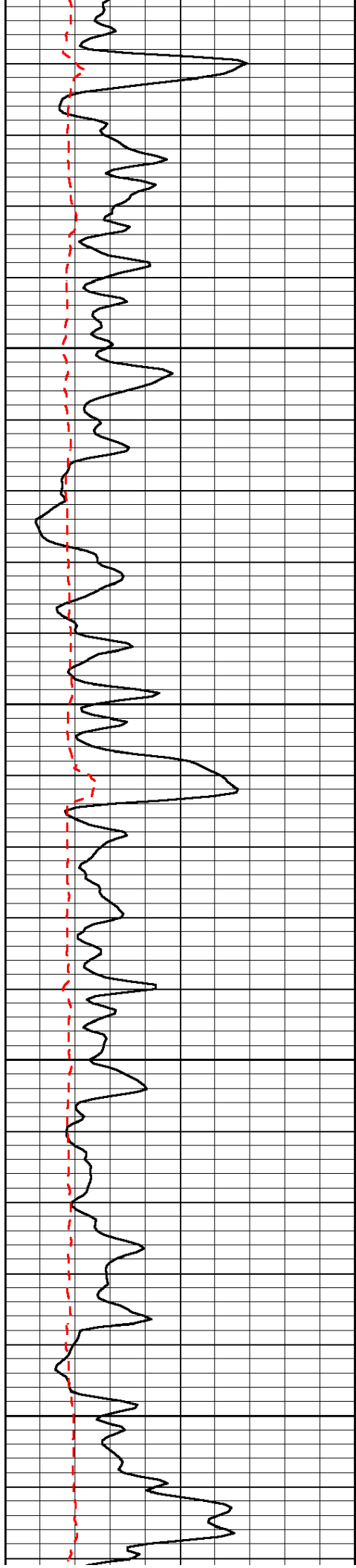


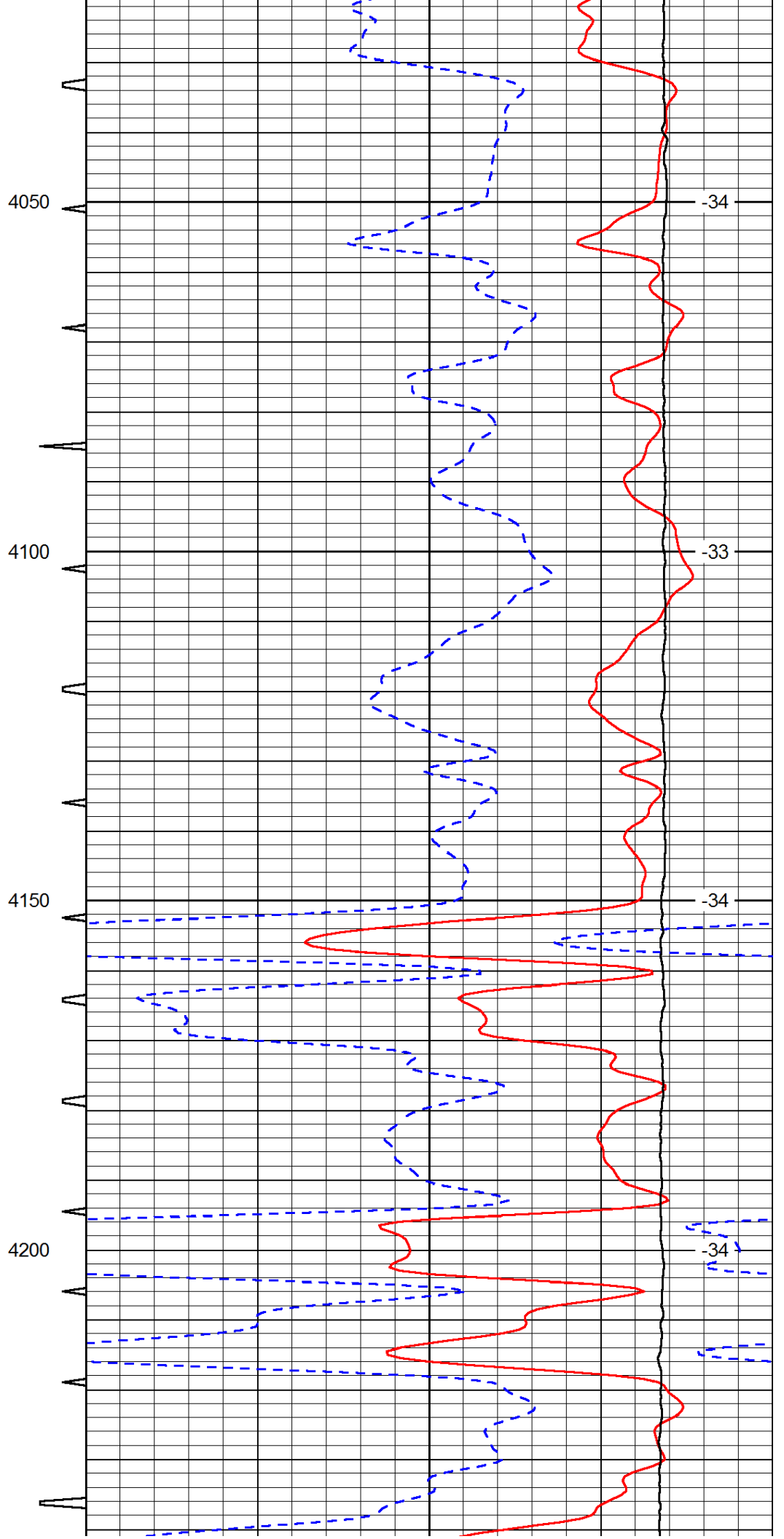
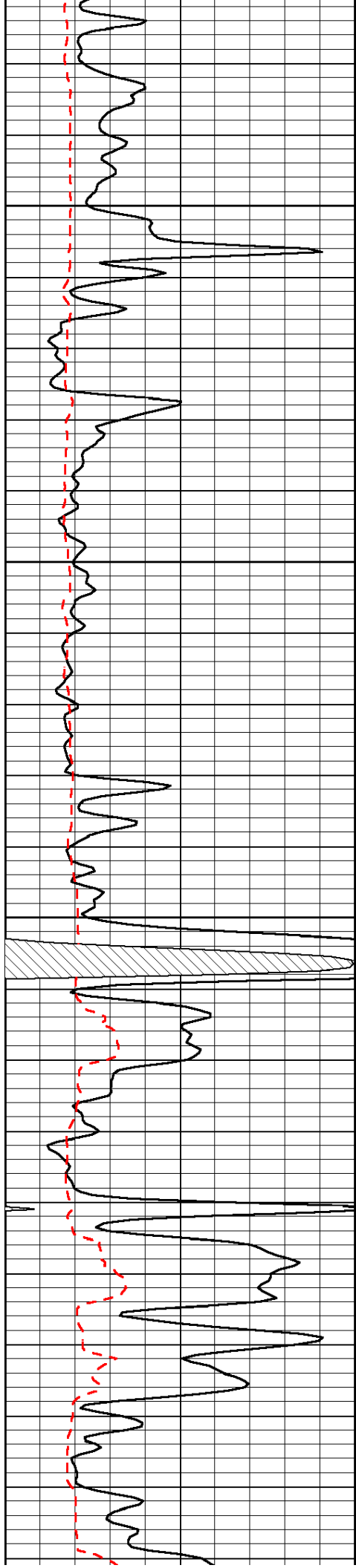


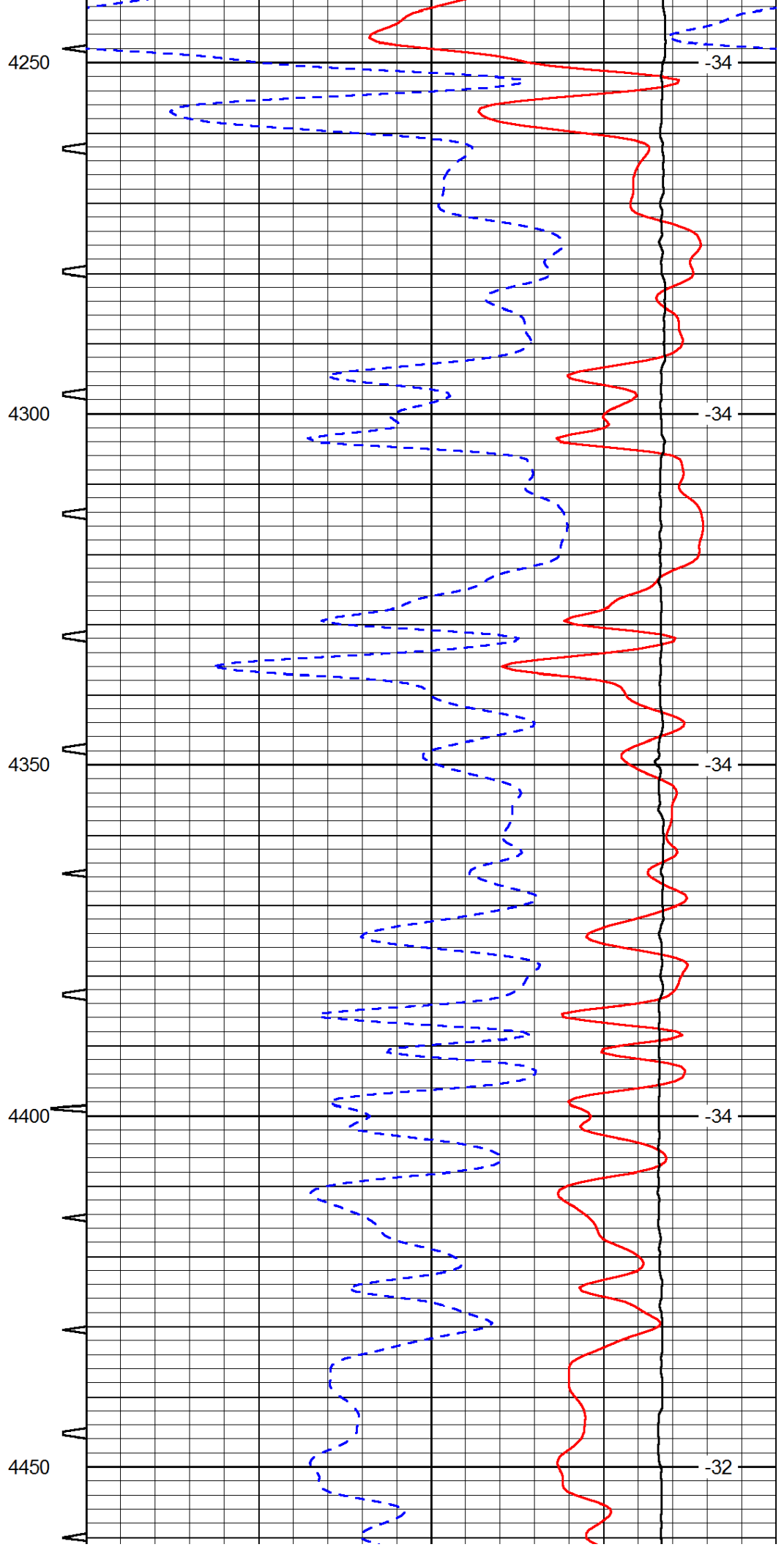
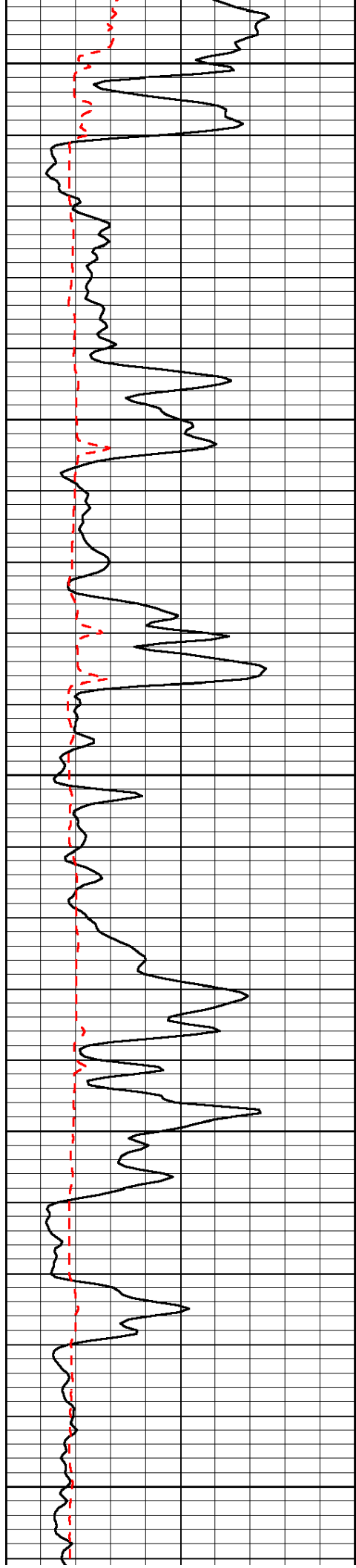


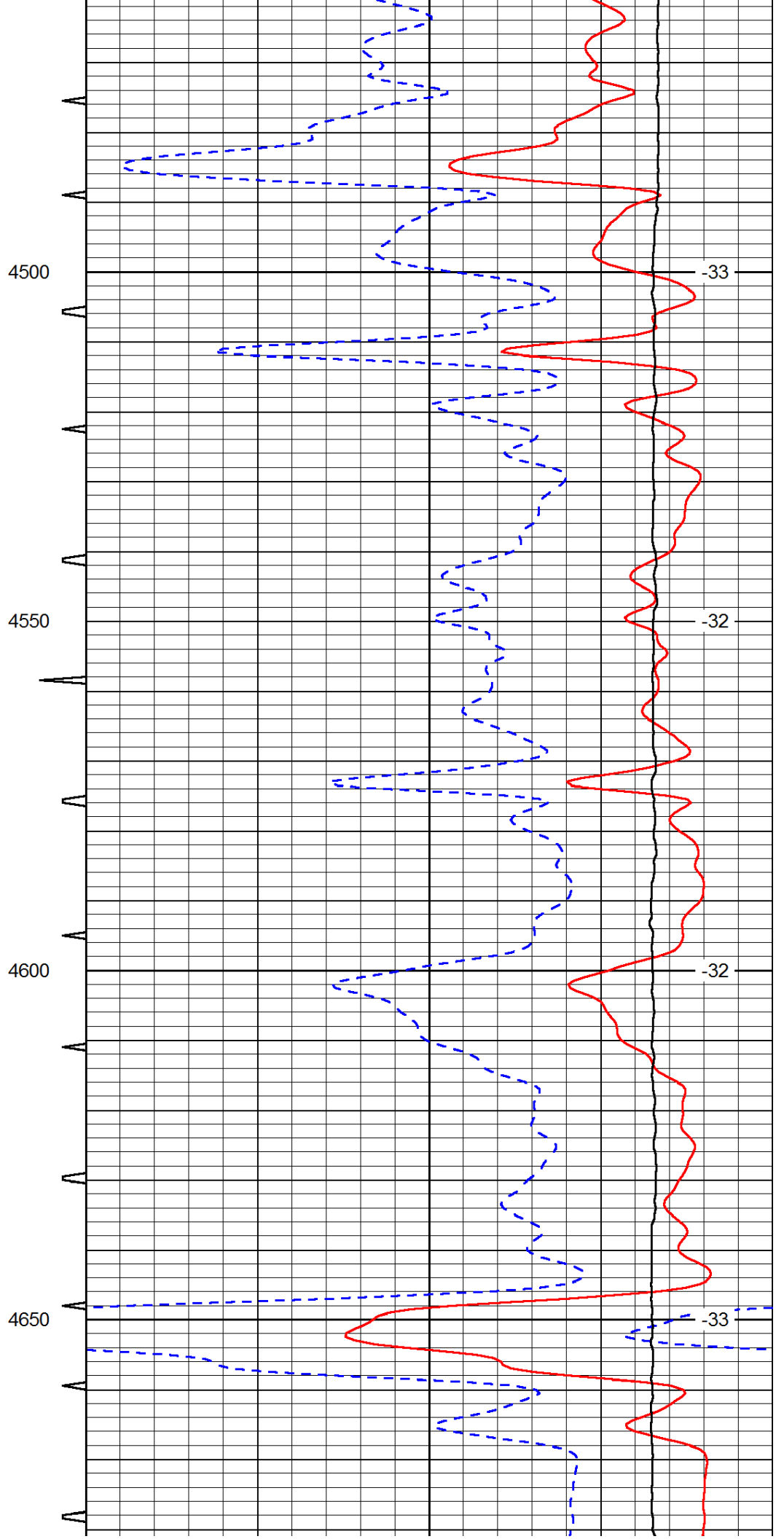
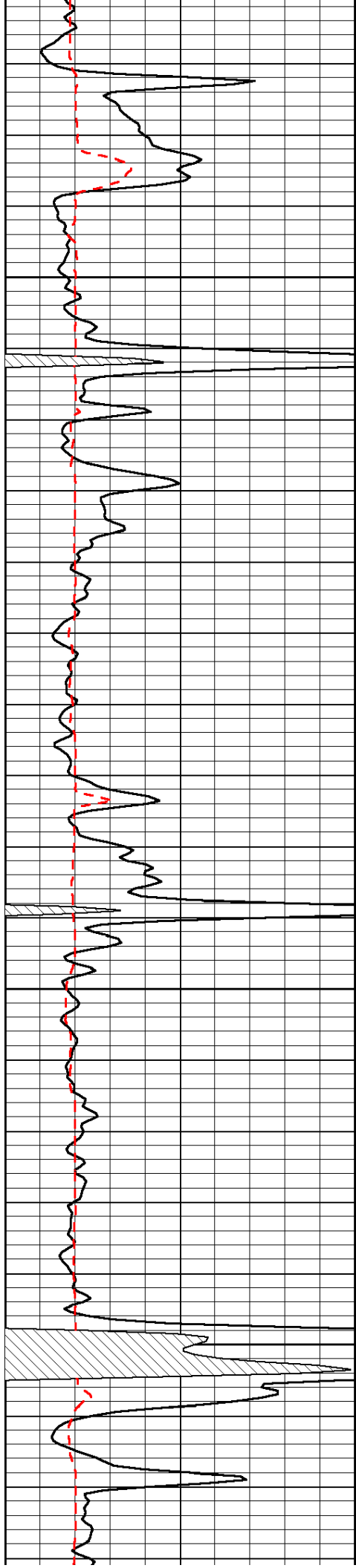


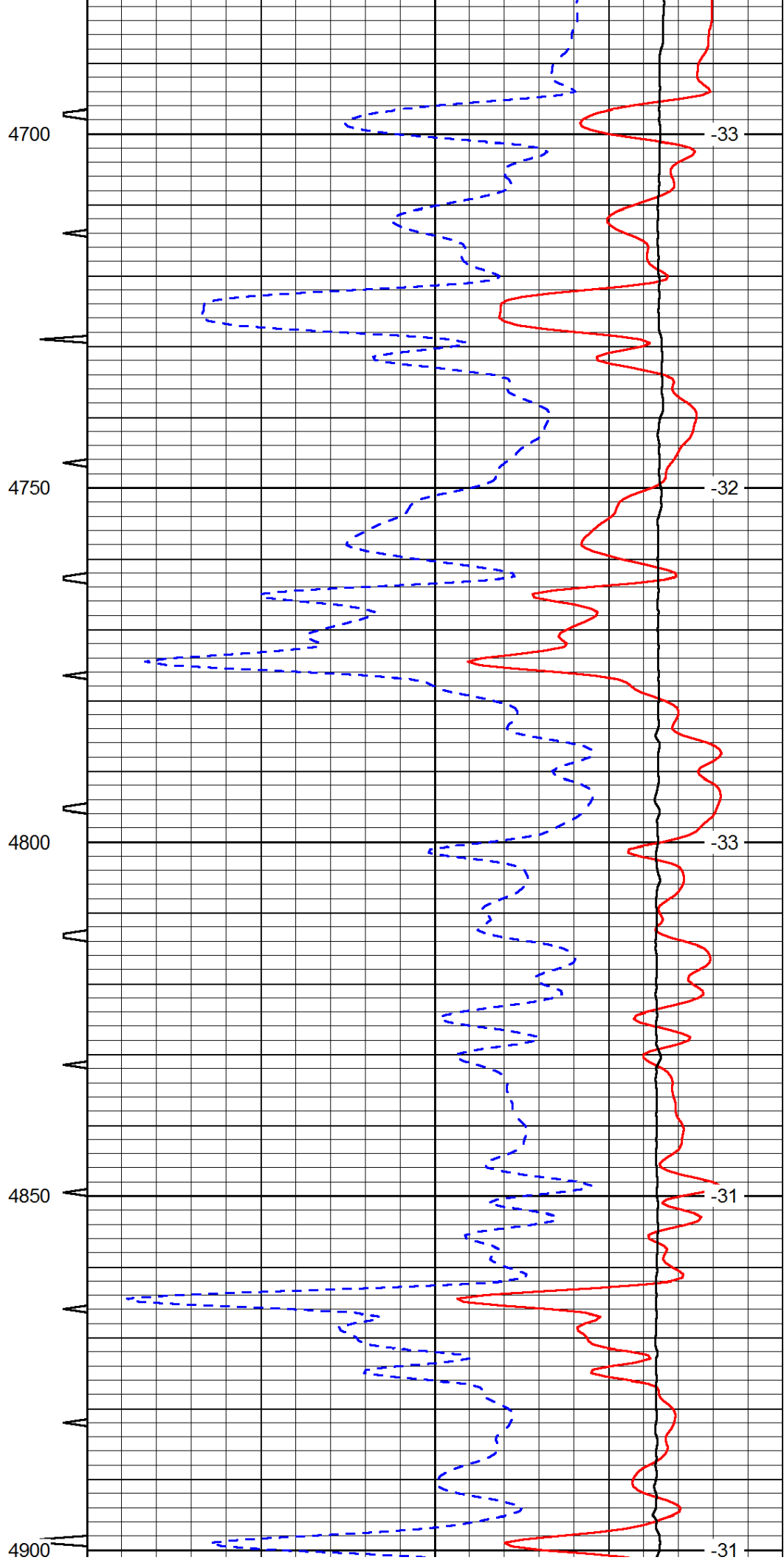
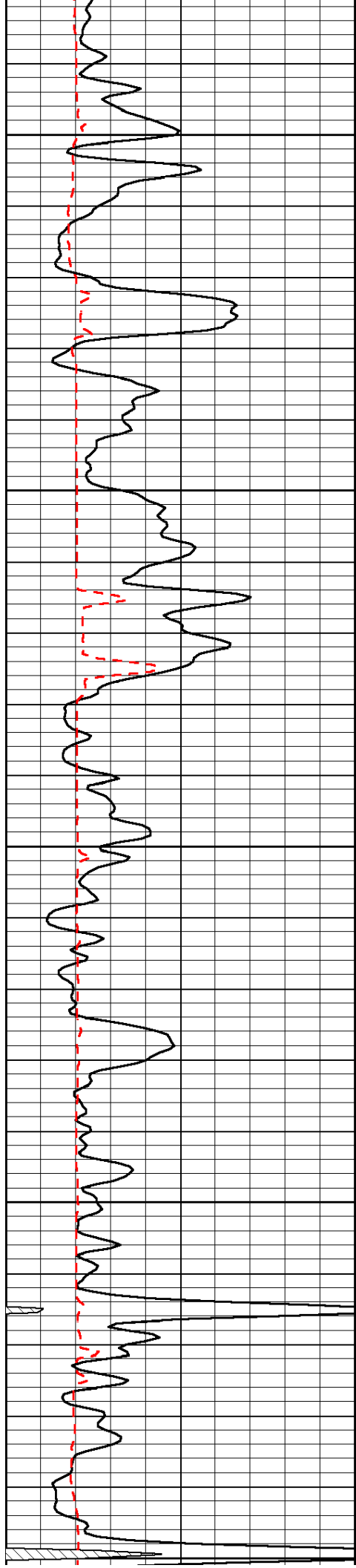


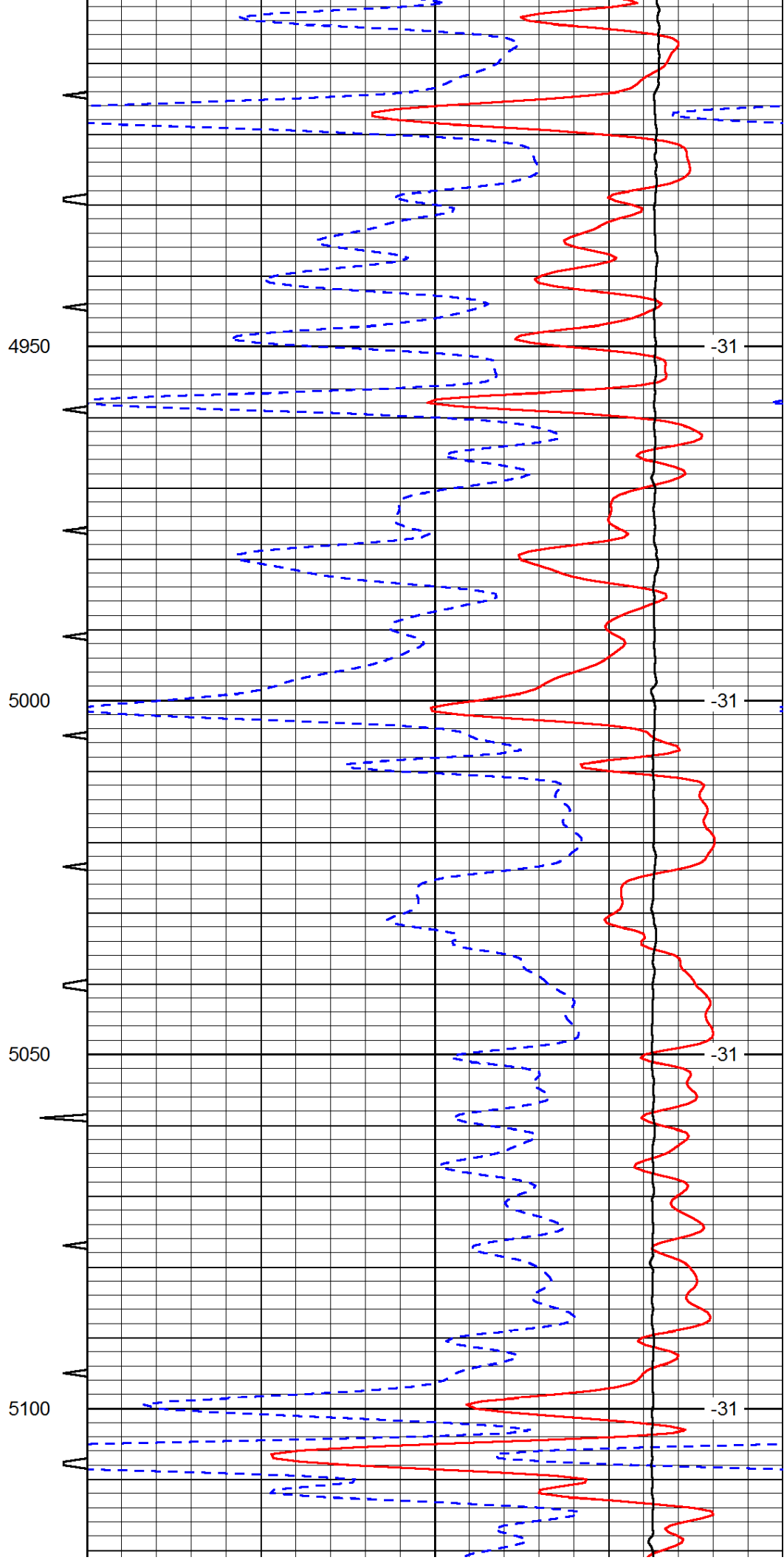
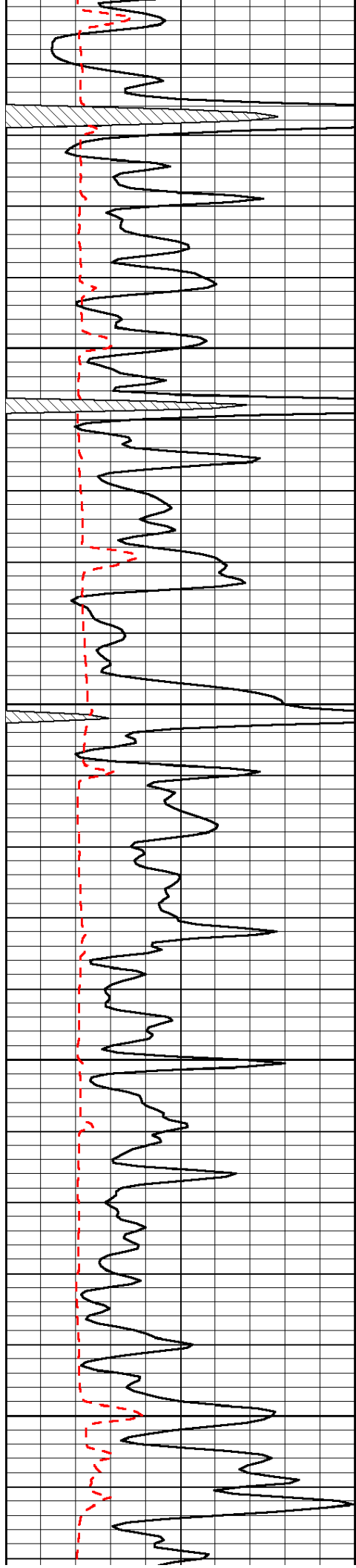


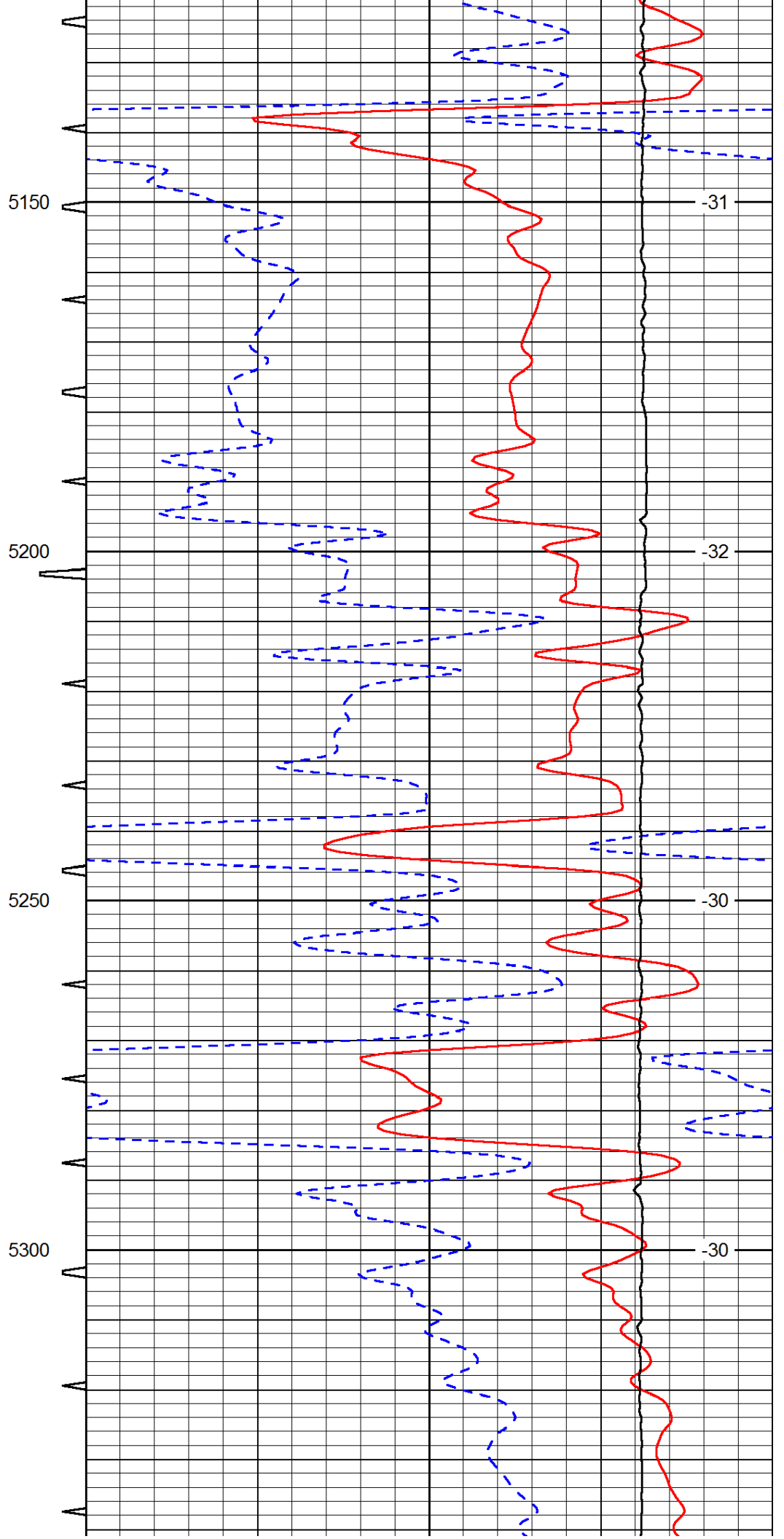
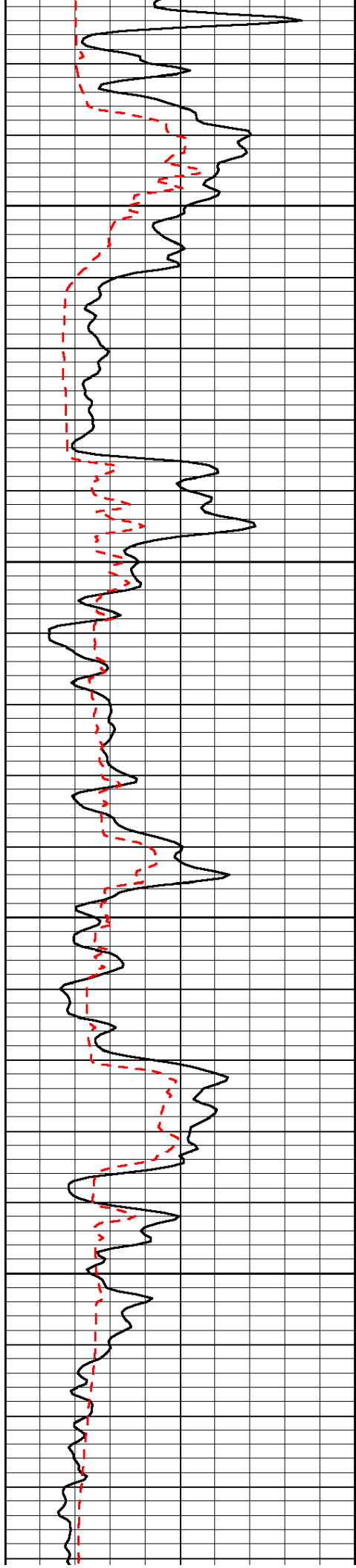


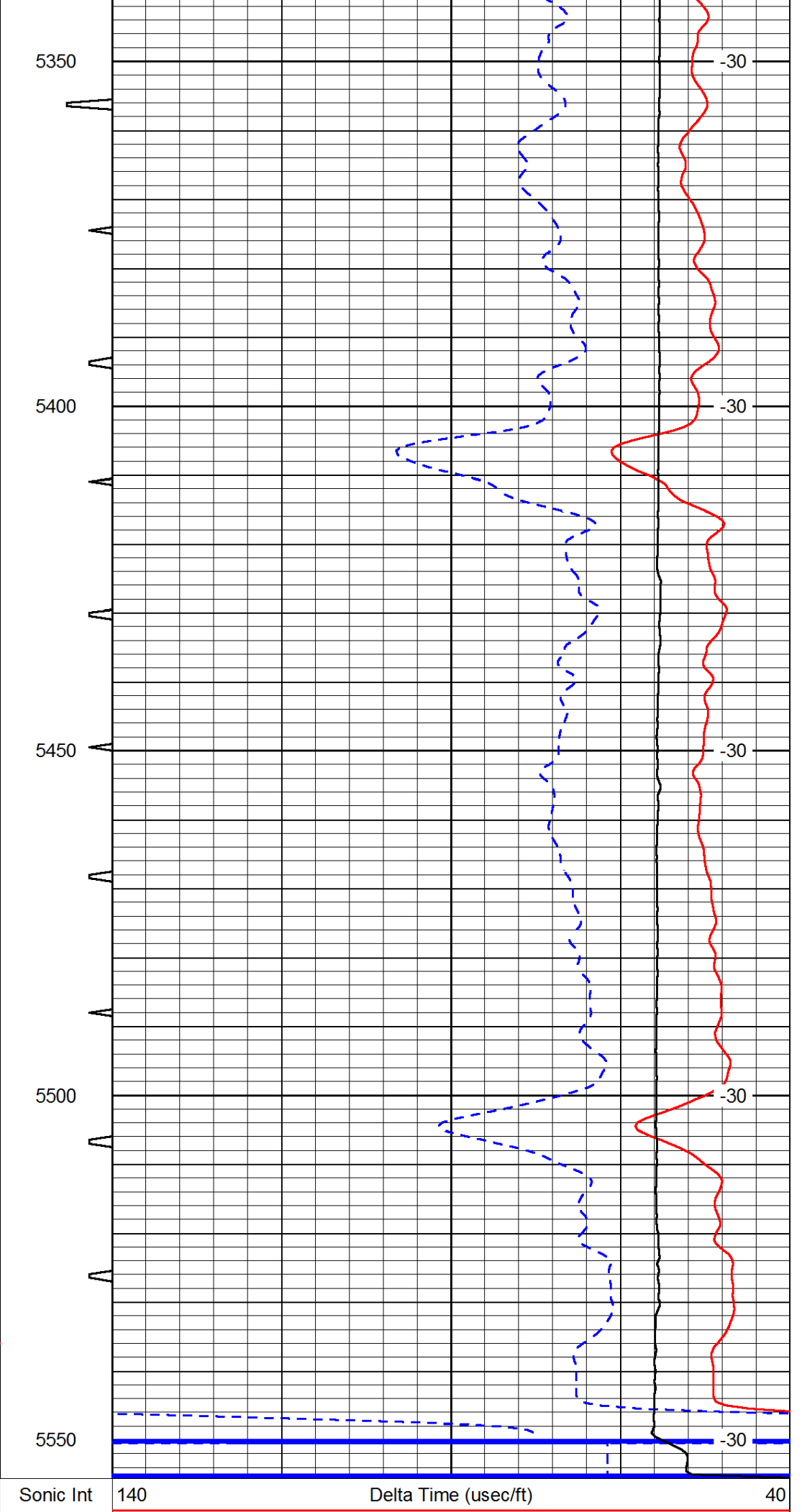
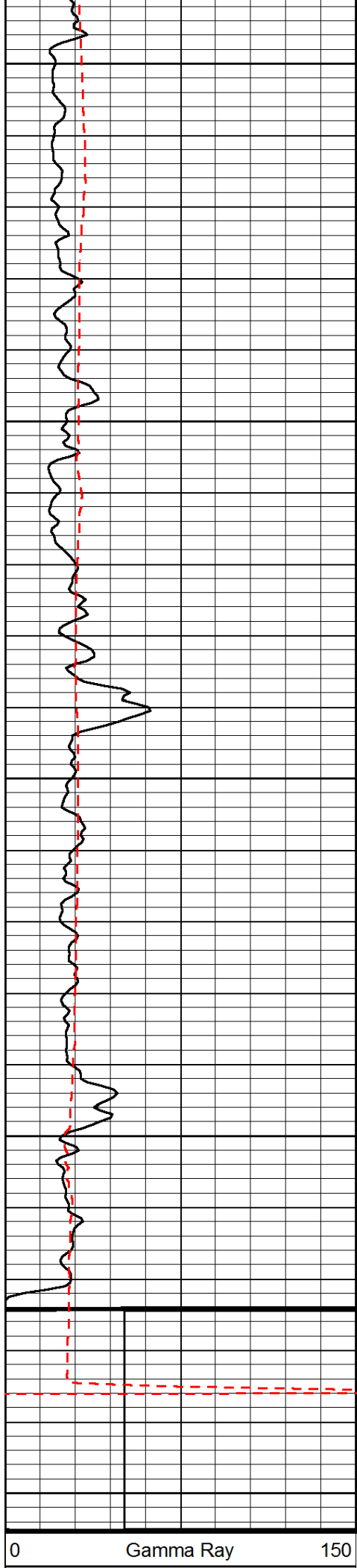












150	Gamma Ray	300	5	0	30	SPOR	-10
6	Caliper (GAPI)	16			15000	LTEN (lb)	0
							LSPD