



Pioneer Energy Services

Dual Induction Log

API No.	15-055-22,179-00-00	
Company	Murfin Drilling Company, Inc.	
Well	Marabelle No. 1-4	
Field	Wildcat	
County	Finney	State
		Kansas
Location	1100' FSL & 1000' FEL	
Sec: 4	Twp: 21 S	Rge: 34 W
Permanent Datum	Ground Level	Elevation 2983
Log Measured From	Kelly Bushing	11 Ft. Above Perm. Datum
Drilling Measured From	Kelly Bushing	
		Other Services CNL/CDL MEL/BHCS
		Elevation K.B. 2994 D.F. 2983 G.L. 2983

Date	9/25/2012
Run Number	One
Depth Driller	4900
Depth Logger	4902
Bottom Logged Interval	4901
Top Log Interval	00
Casing Driller	8.625 @ 229
Casing Logger	225
Bit Size	7.875
Type Fluid in Hole	Chemical
Salinity, ppm CL	5000
Density / Viscosity	9.4 56
pH / Fluid Loss	9.5 8.8
Source of Sample	Flowline
Rm @ Meas. Temp	.55 @ 70
Rmf @ Meas. Temp	.41 @ 70
Rmc @ Meas. Temp	.74 @ 70
Source of Rmf / Rmc	Charts
Rm @ BHT	.31 @ 125
Operating Rig Time	5 Hours
Max Rec. Temp. F	125
Equipment Number	15
Location	Hays
Recorded By	D.Kerr
Witnessed By	Jeff Christian

<<< Fold Here >>>

All interpretations are opinions based on inferences from electrical or other measurements and we cannot and do not guarantee the accuracy or correctness of any interpretation, and we shall not, except in the case of gross or willful negligence on our part, be liable or responsible for any loss, costs, damages, or expenses incurred or sustained by anyone resulting from any interpretation made by any of our officers, agents or employees. These interpretations are also subject to our general terms and conditions set out in our current Price Schedule.

Comments

Thank you for using Log-Tech, Inc.
 (785) 625-3858

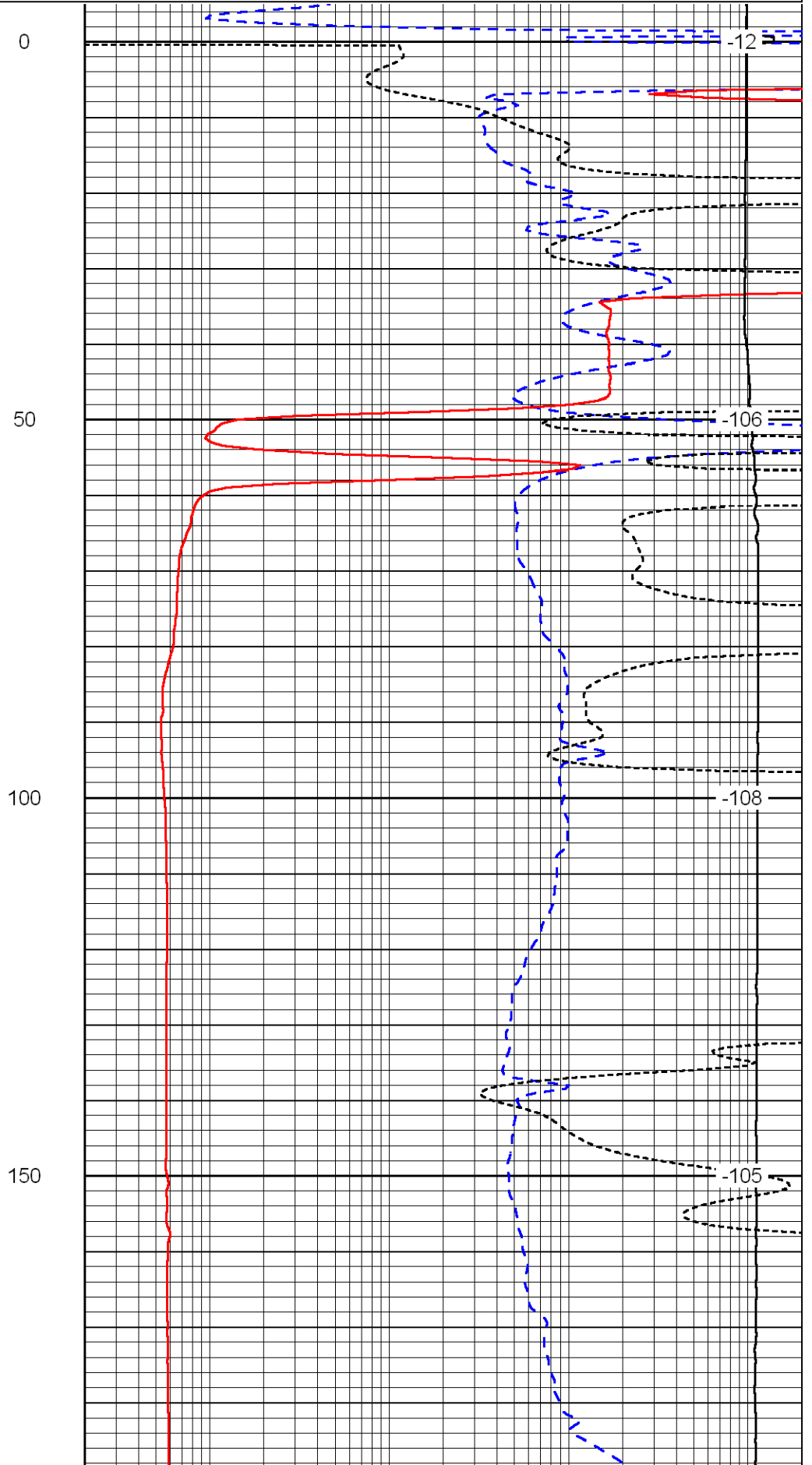
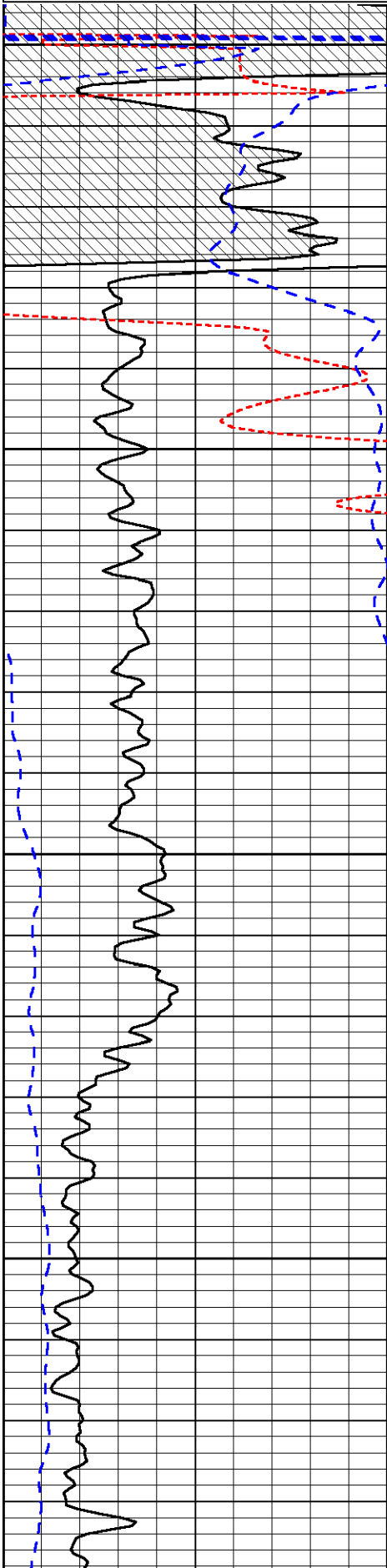
 Scott City KS, South to the Finney-Scott County Line,
 8 1/2 West, 3/4 South, West Into

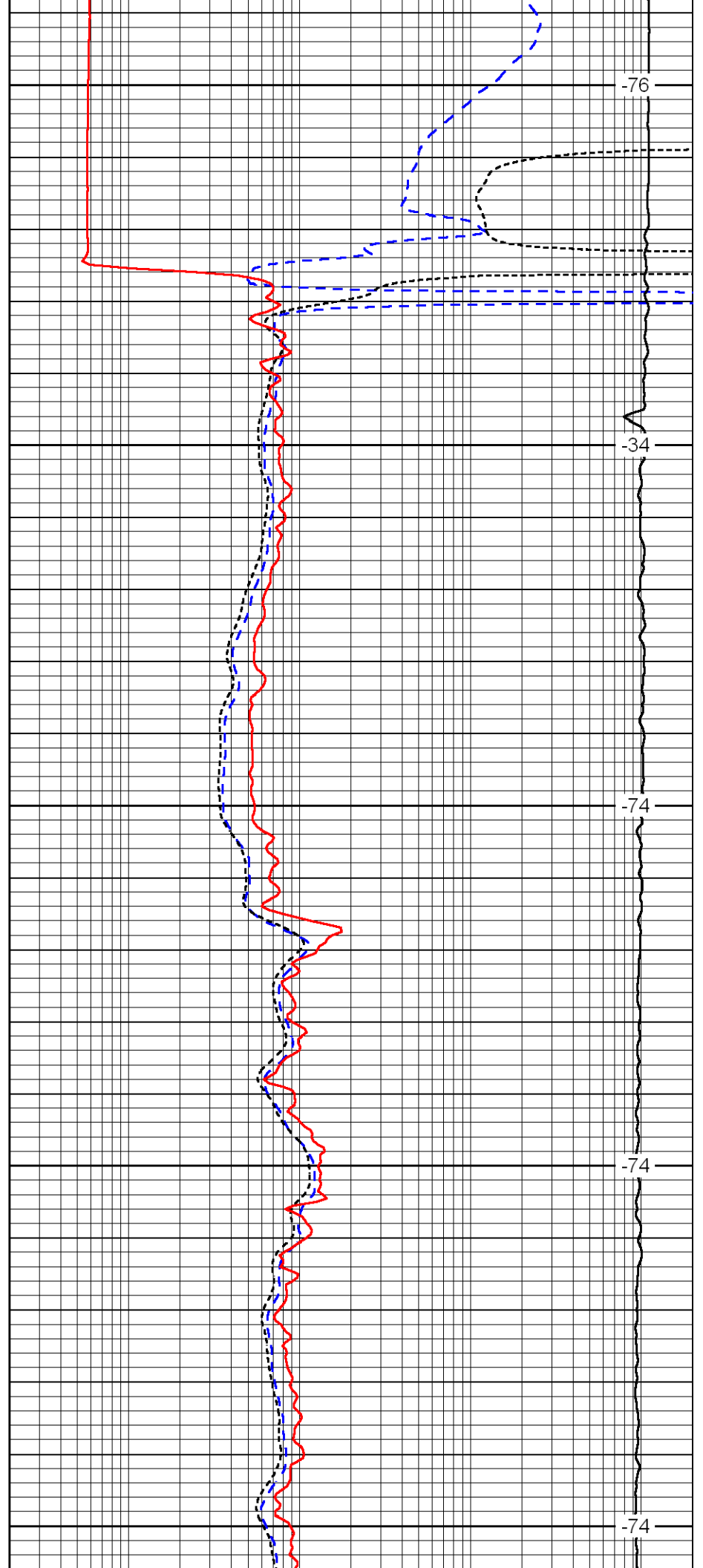
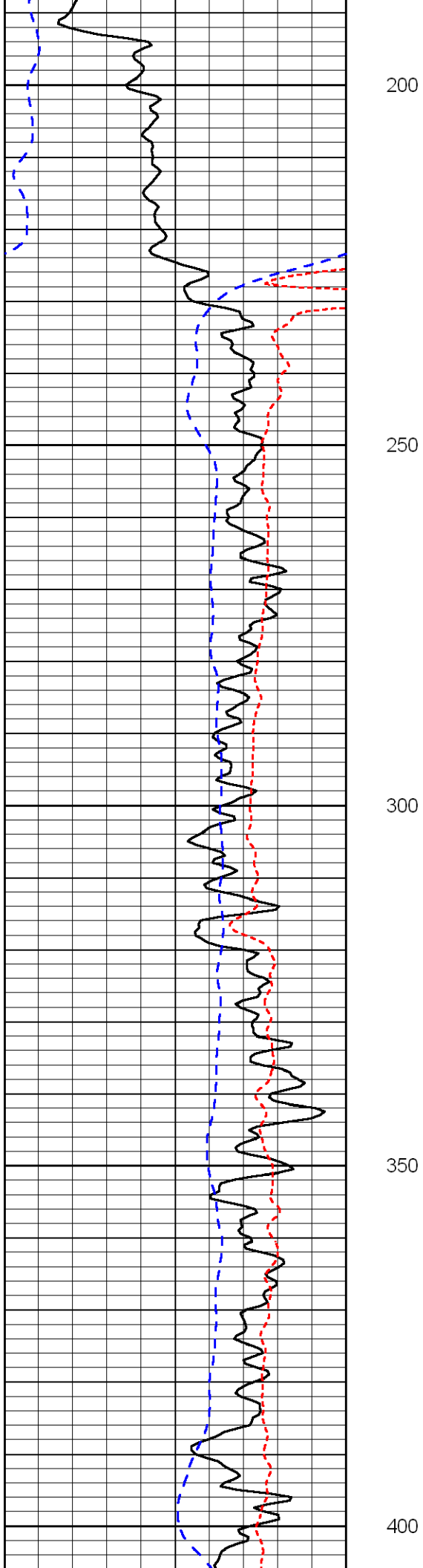
Database File:	murfin_marabelle_1_4hd.db
Dataset Pathname:	DIL/murfstk
Presentation Format:	dil
Dataset Creation:	Tue Sep 25 22:34:15 2012
Charted by:	Depth in Feet scaled 1:240

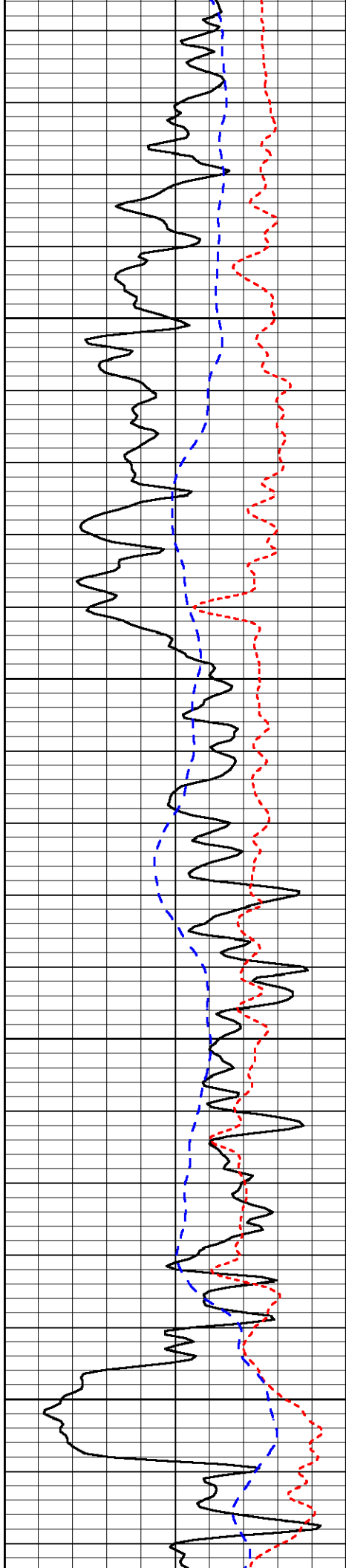
0	Gamma Ray	150
-160	RXO/RT	40
-200	SP	0

0.2	Deep Resistivity	2000
0.2	Medium Resistivity	2000
0.2	Shallow Resistivity	2000
10000	Line Tension	0

LSPD





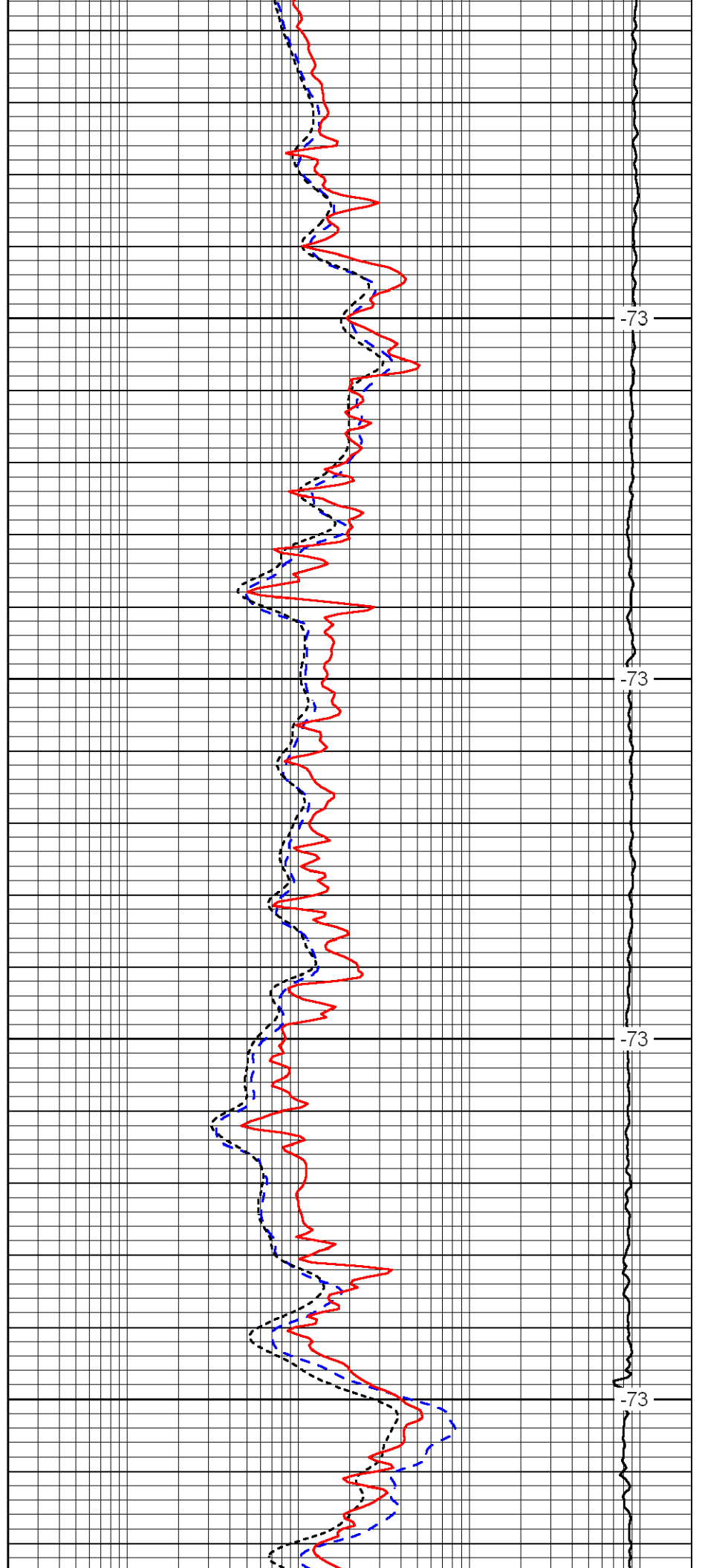


450

500

550

600

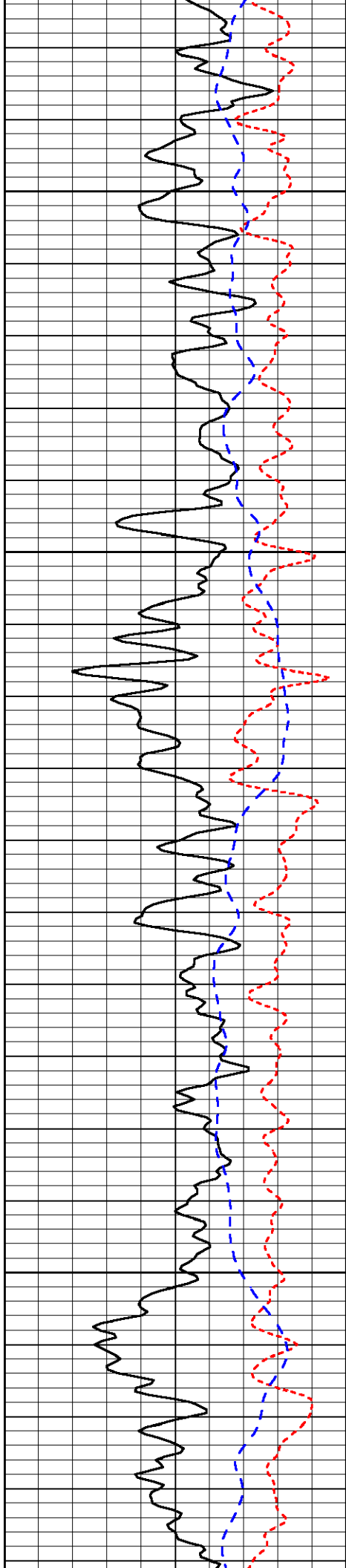


-73

-73

-73

-73

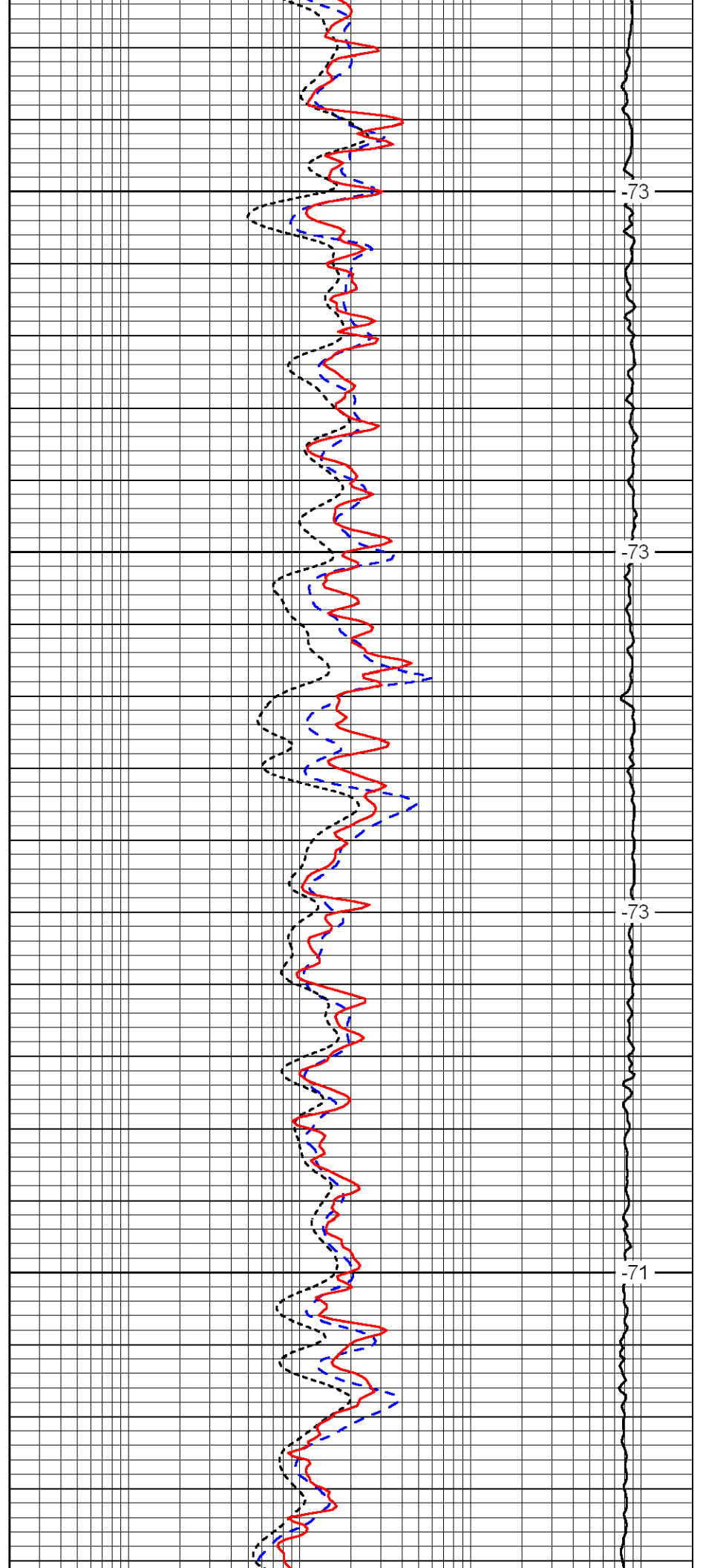


650

700

750

800

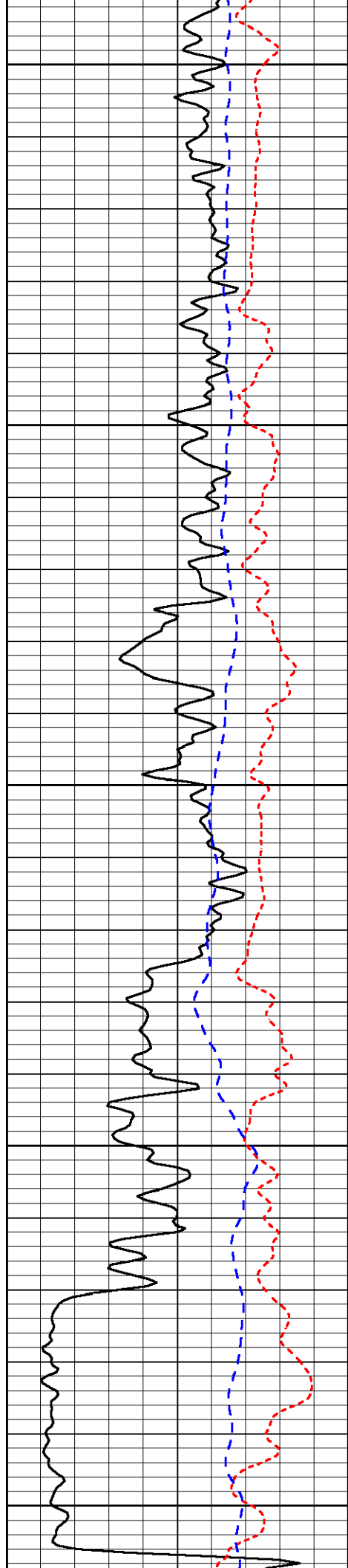


-73

-73

-73

-71



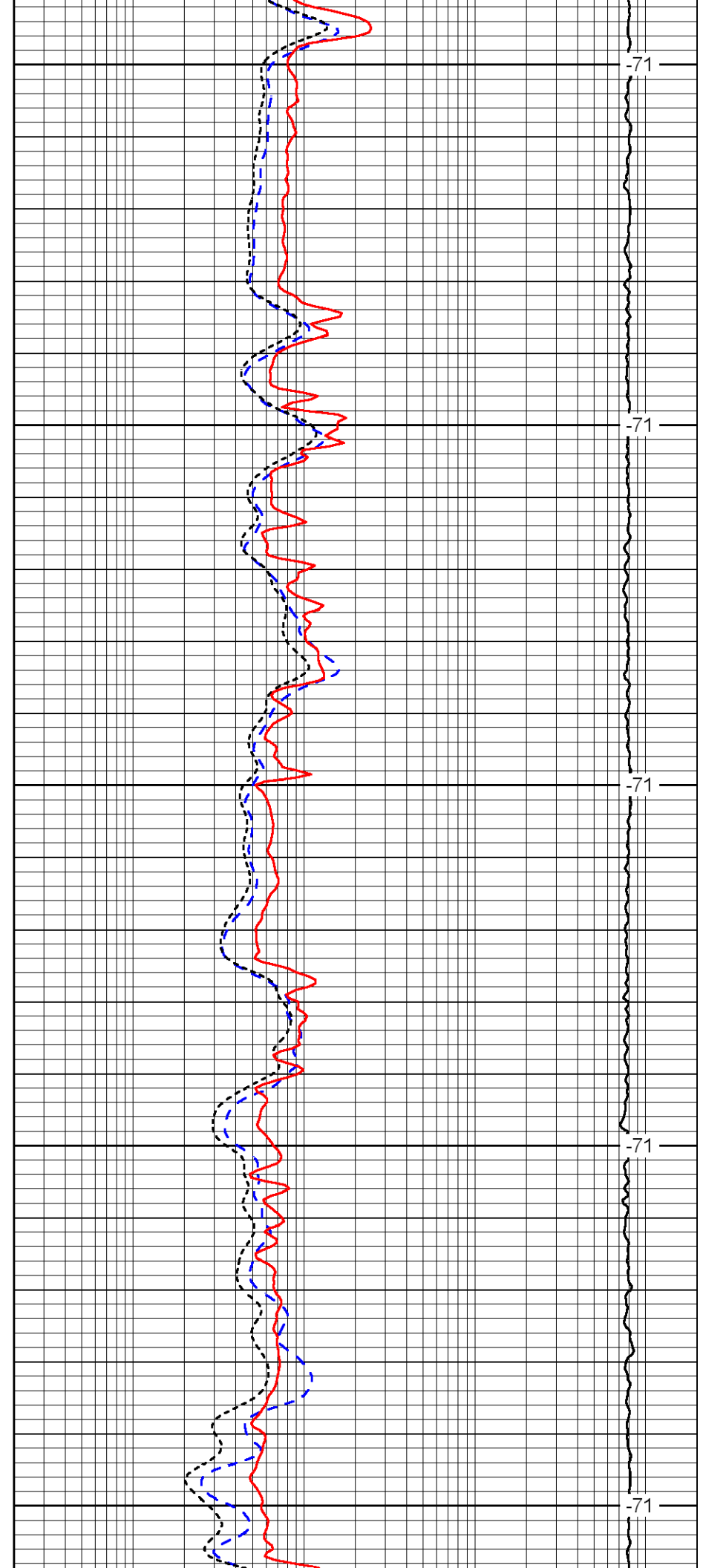
850

900

950

1000

1050



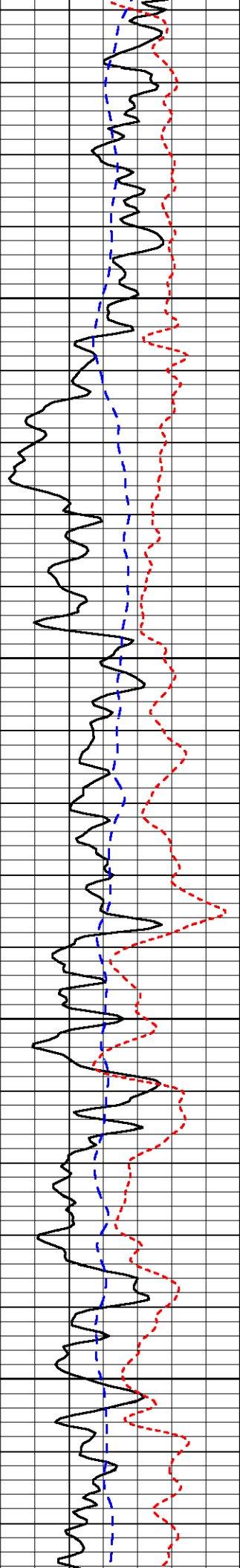
-71

-71

-71

-71

-71

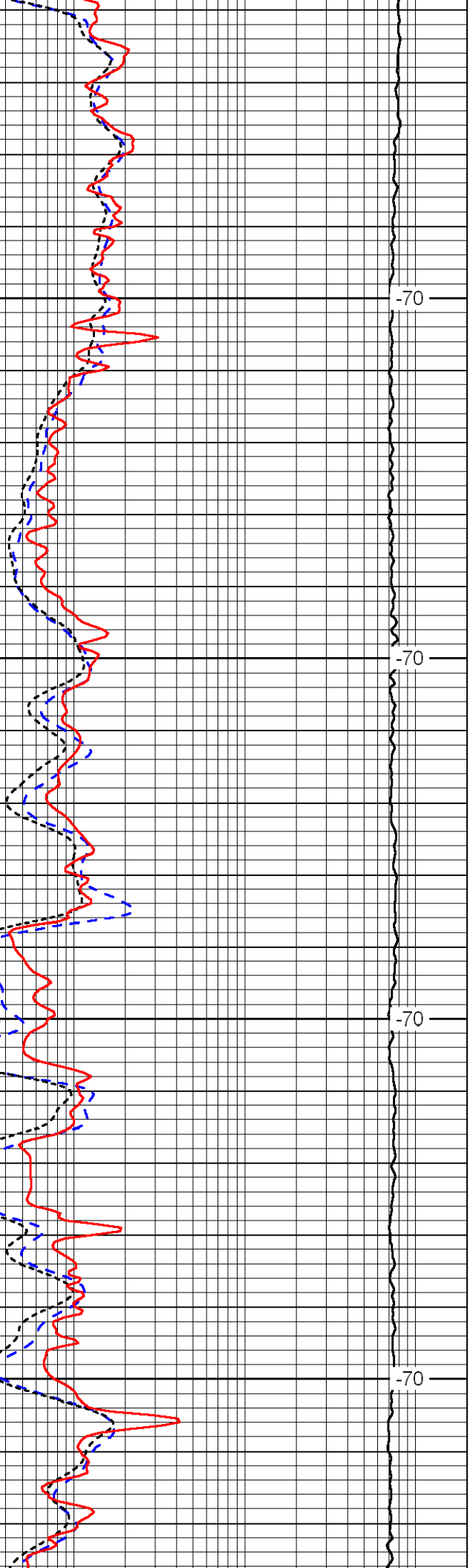


1100

1150

1200

1250

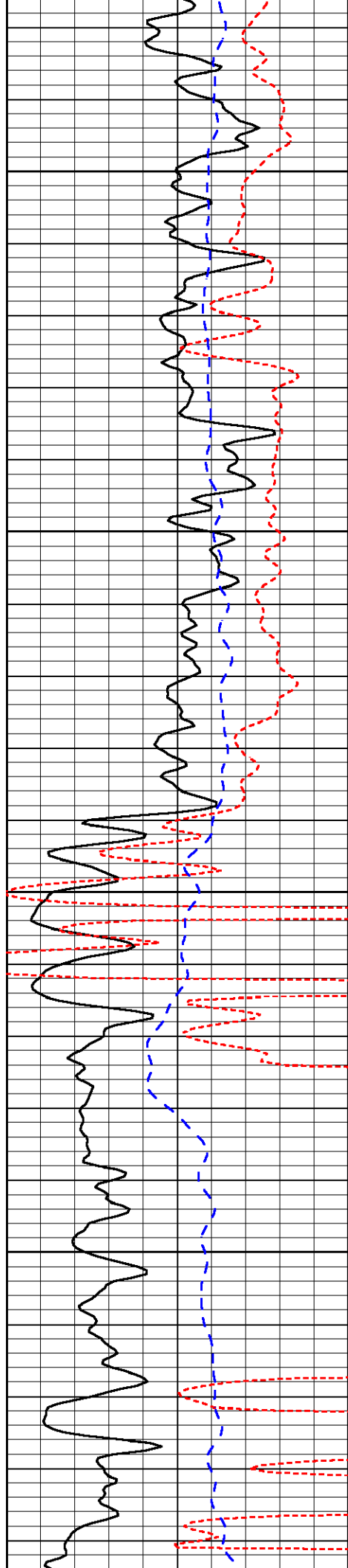


-70

-70

-70

-70

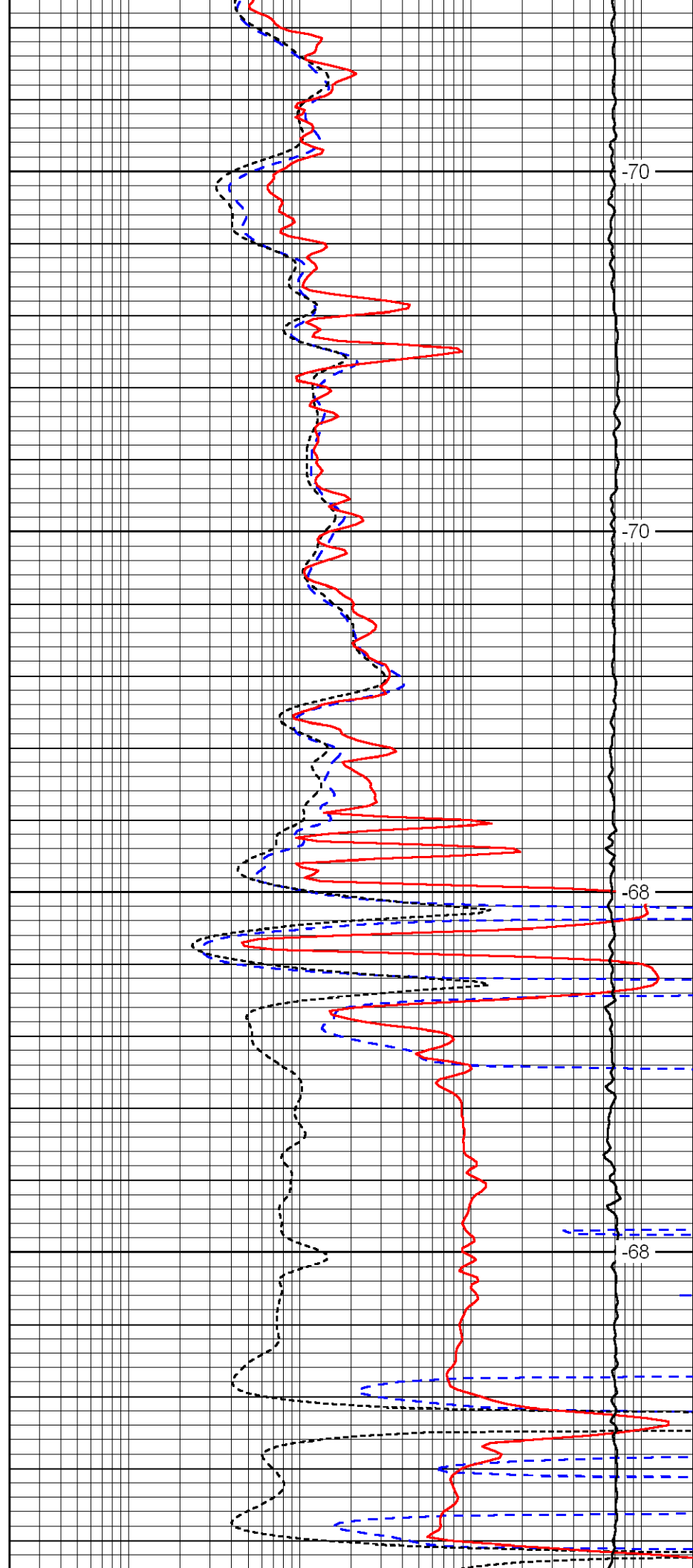


1300

1350

1400

1450

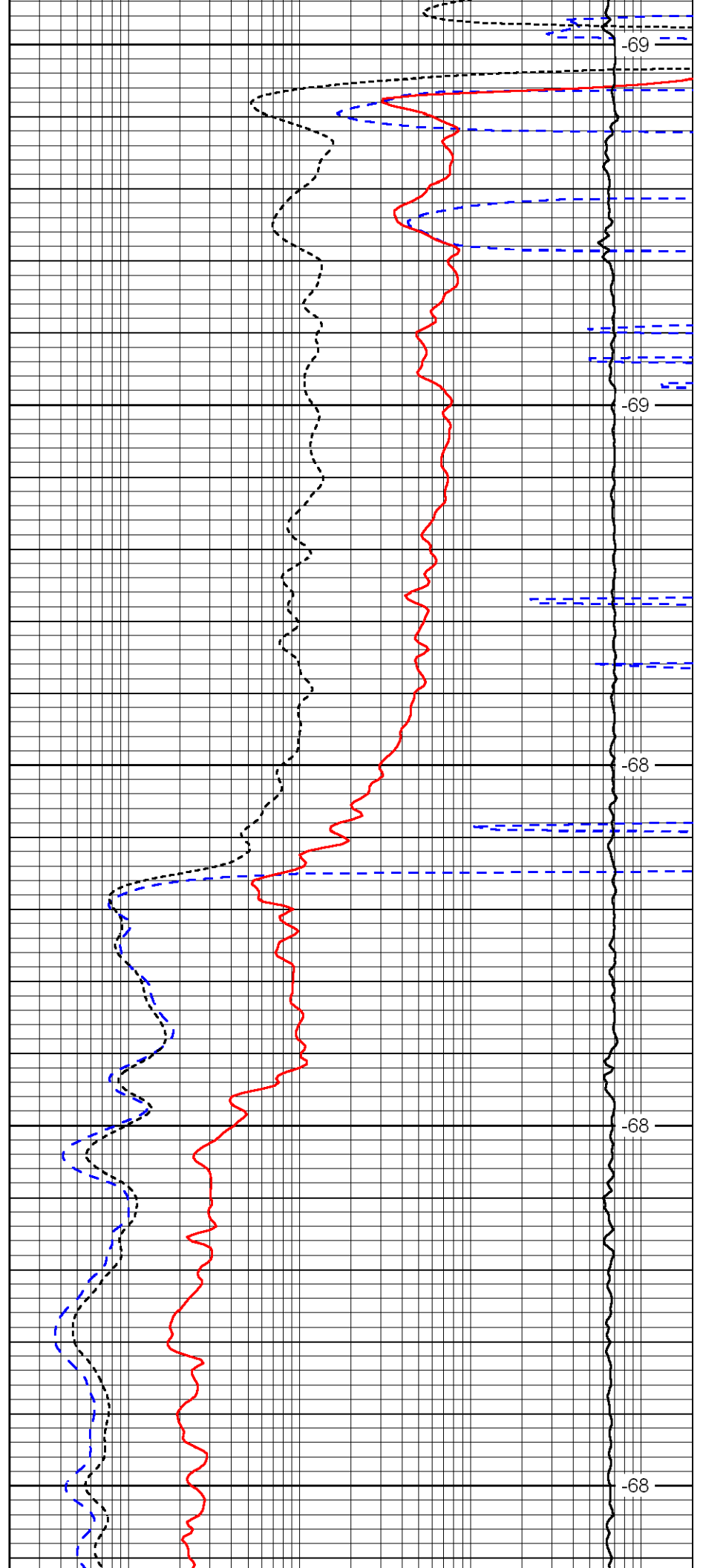
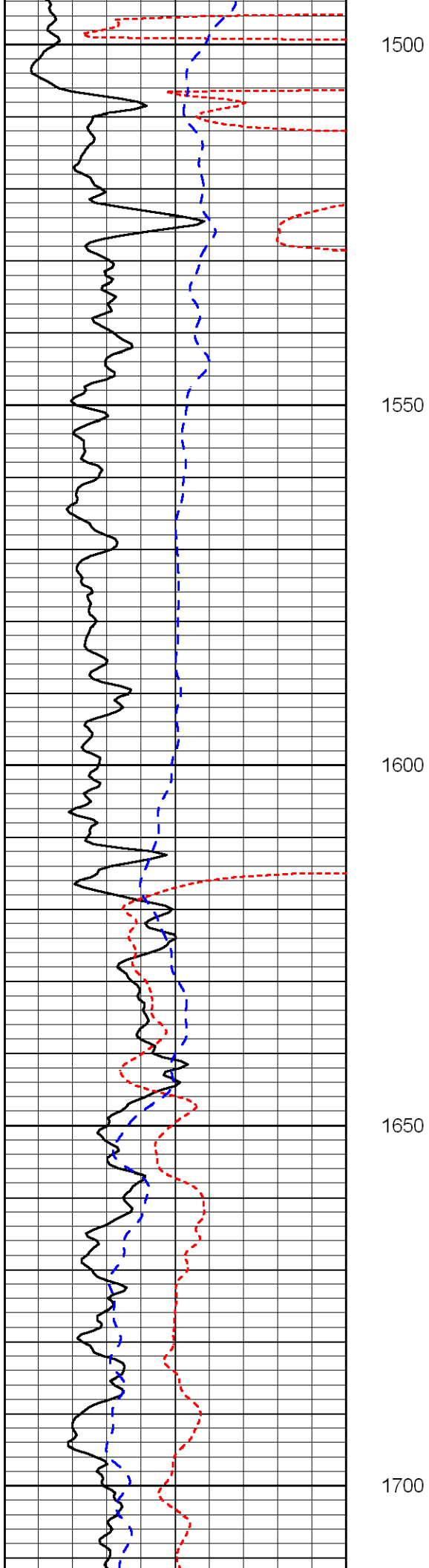


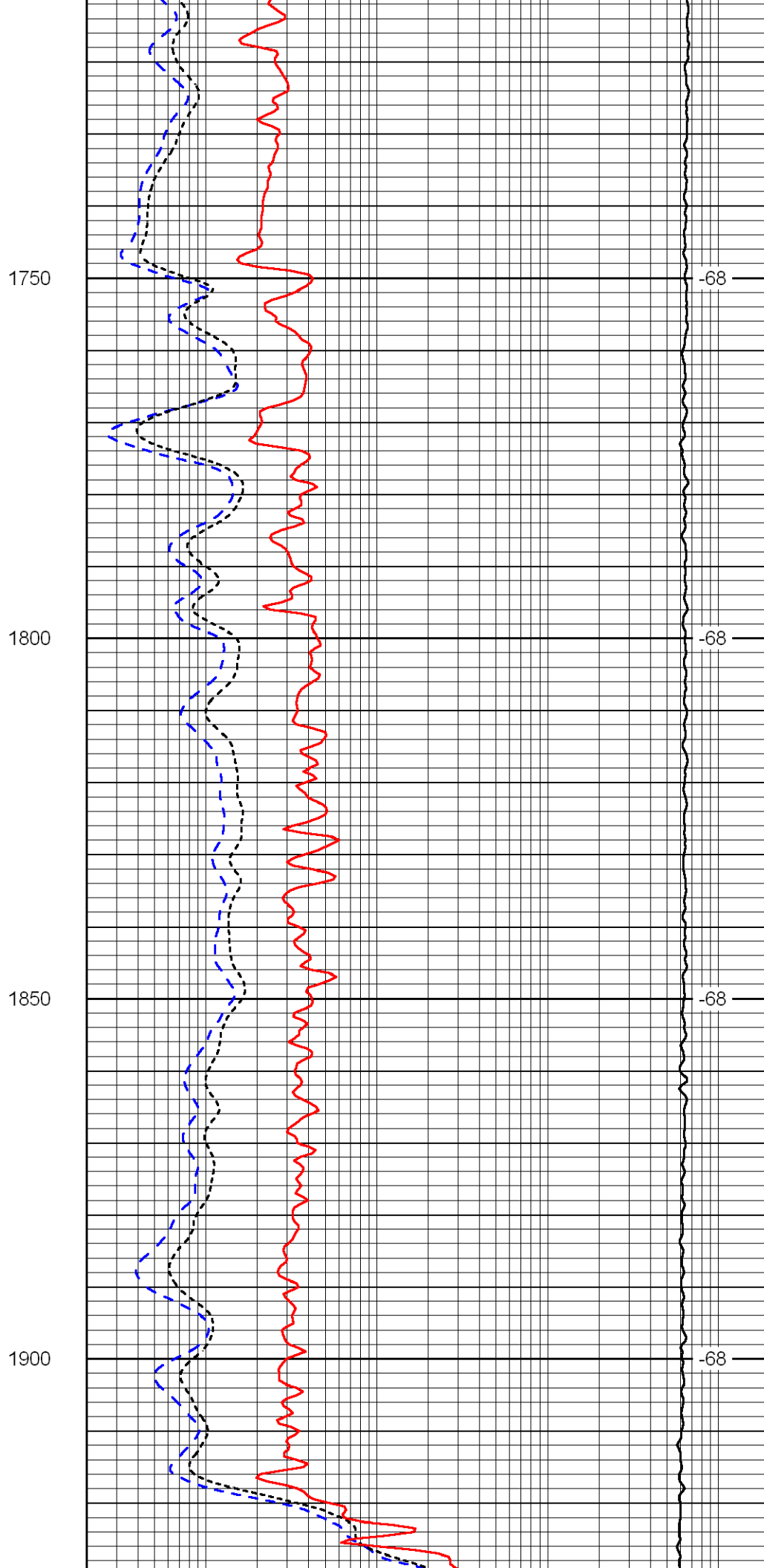
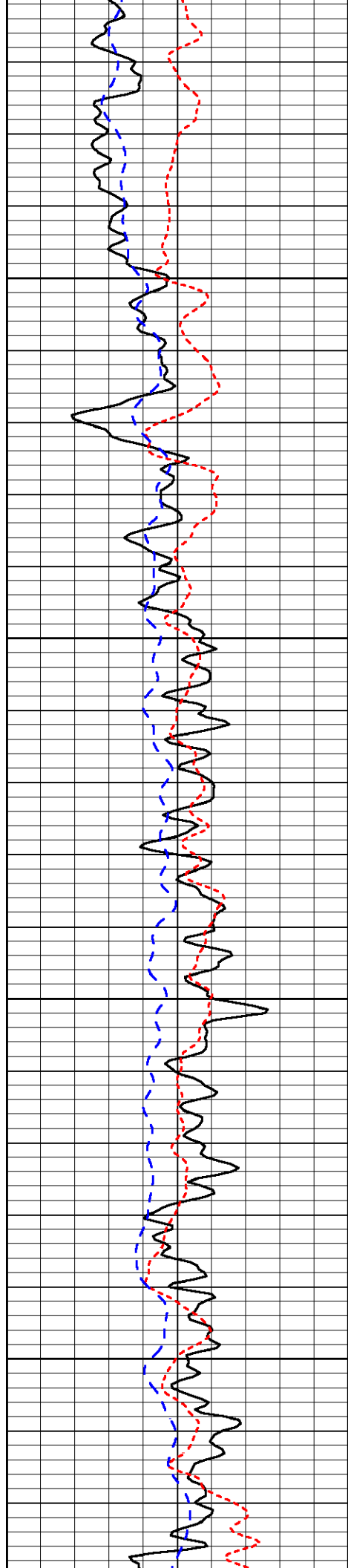
-70

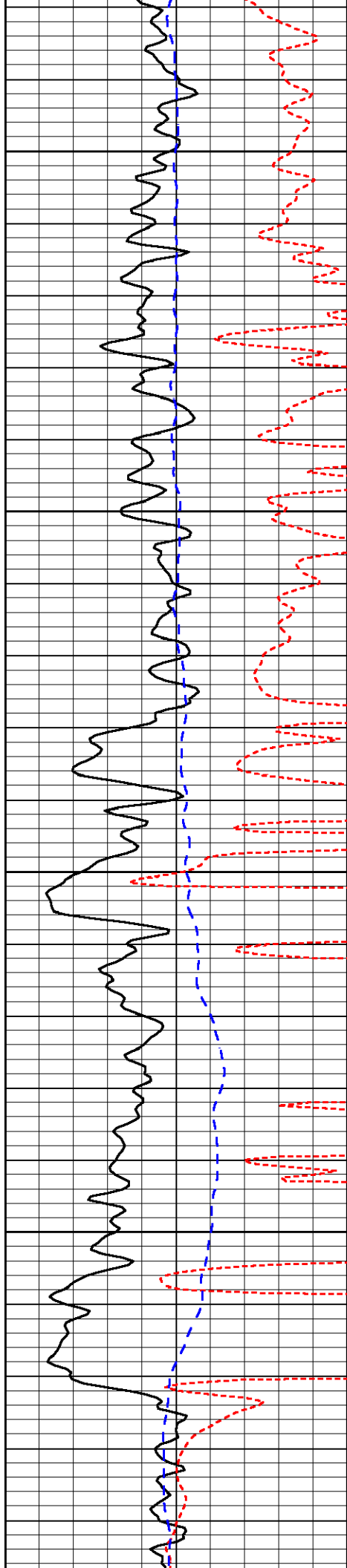
-70

-68

-68





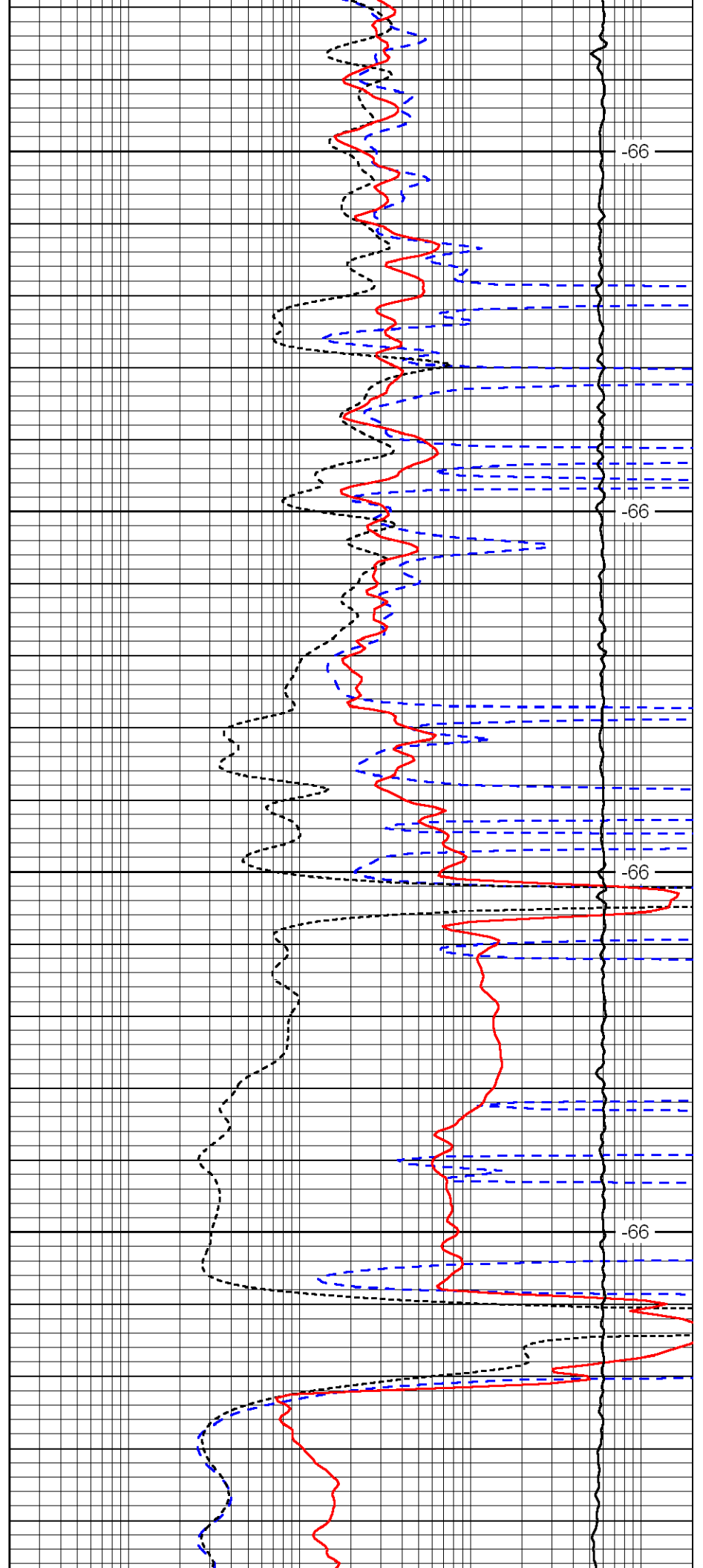


1950

2000

2050

2100

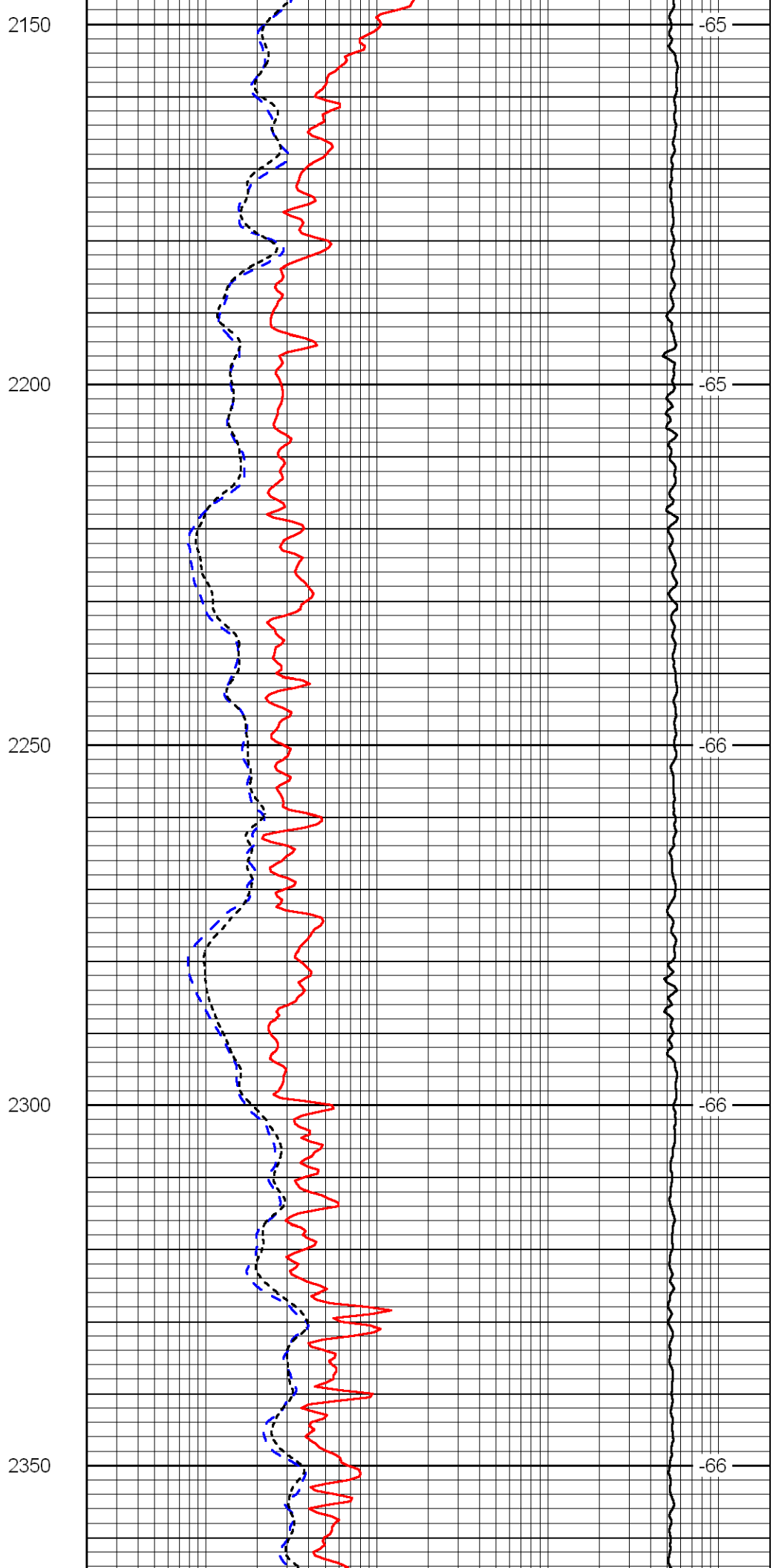
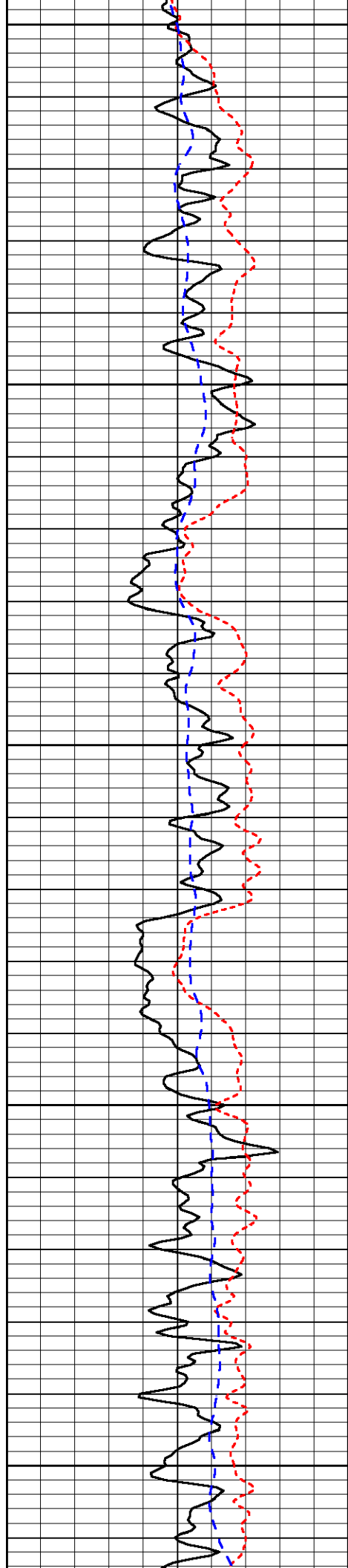


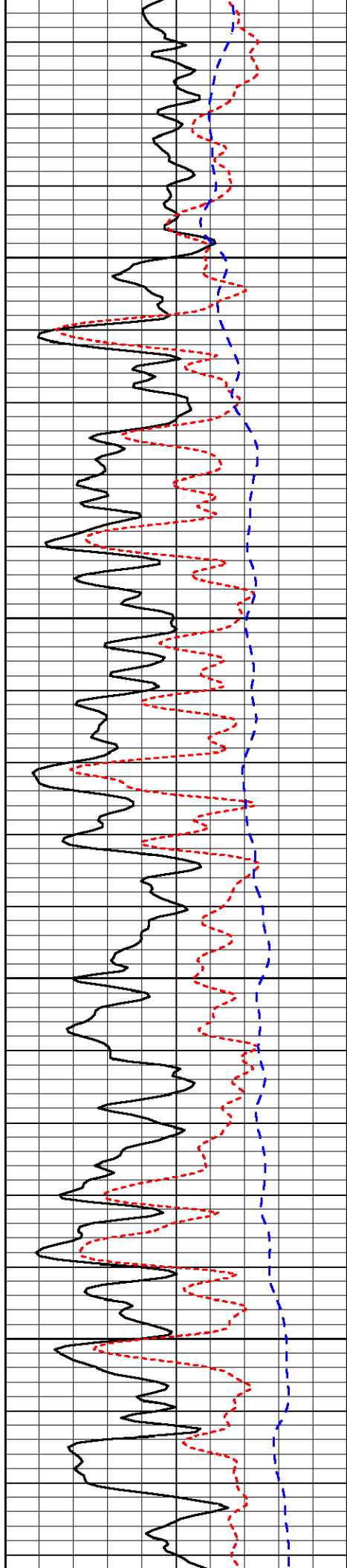
-66

-66

-66

-66



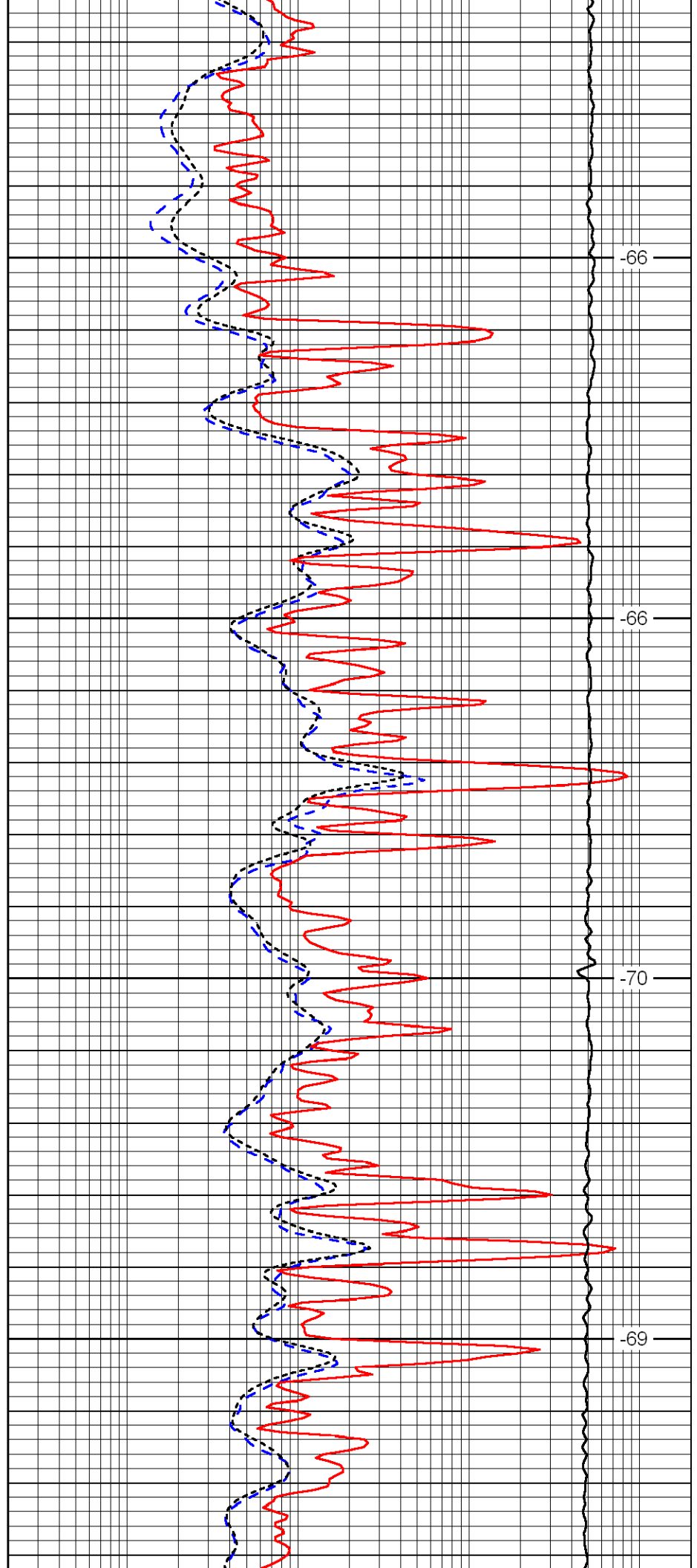


2400

2450

2500

2550

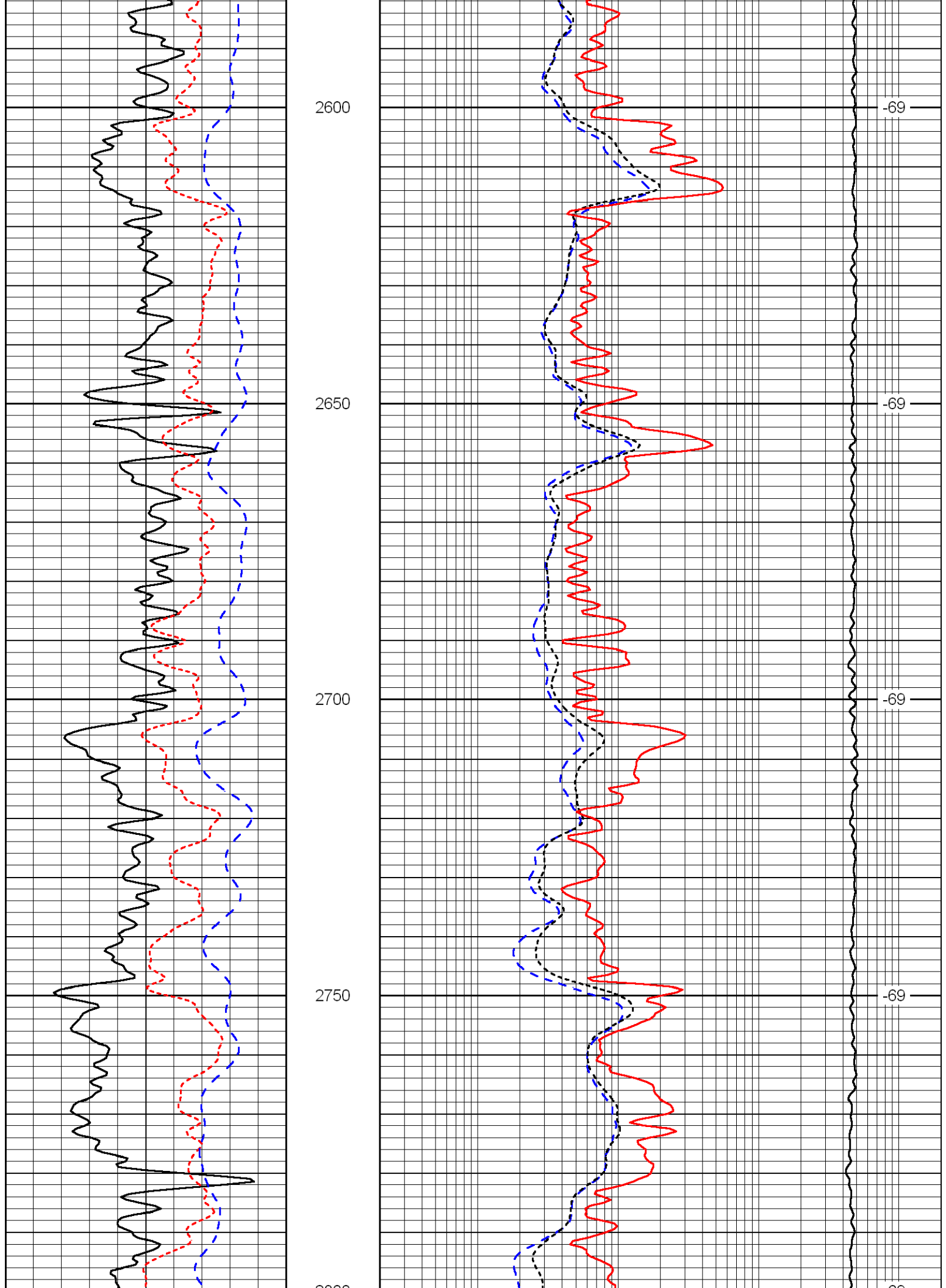


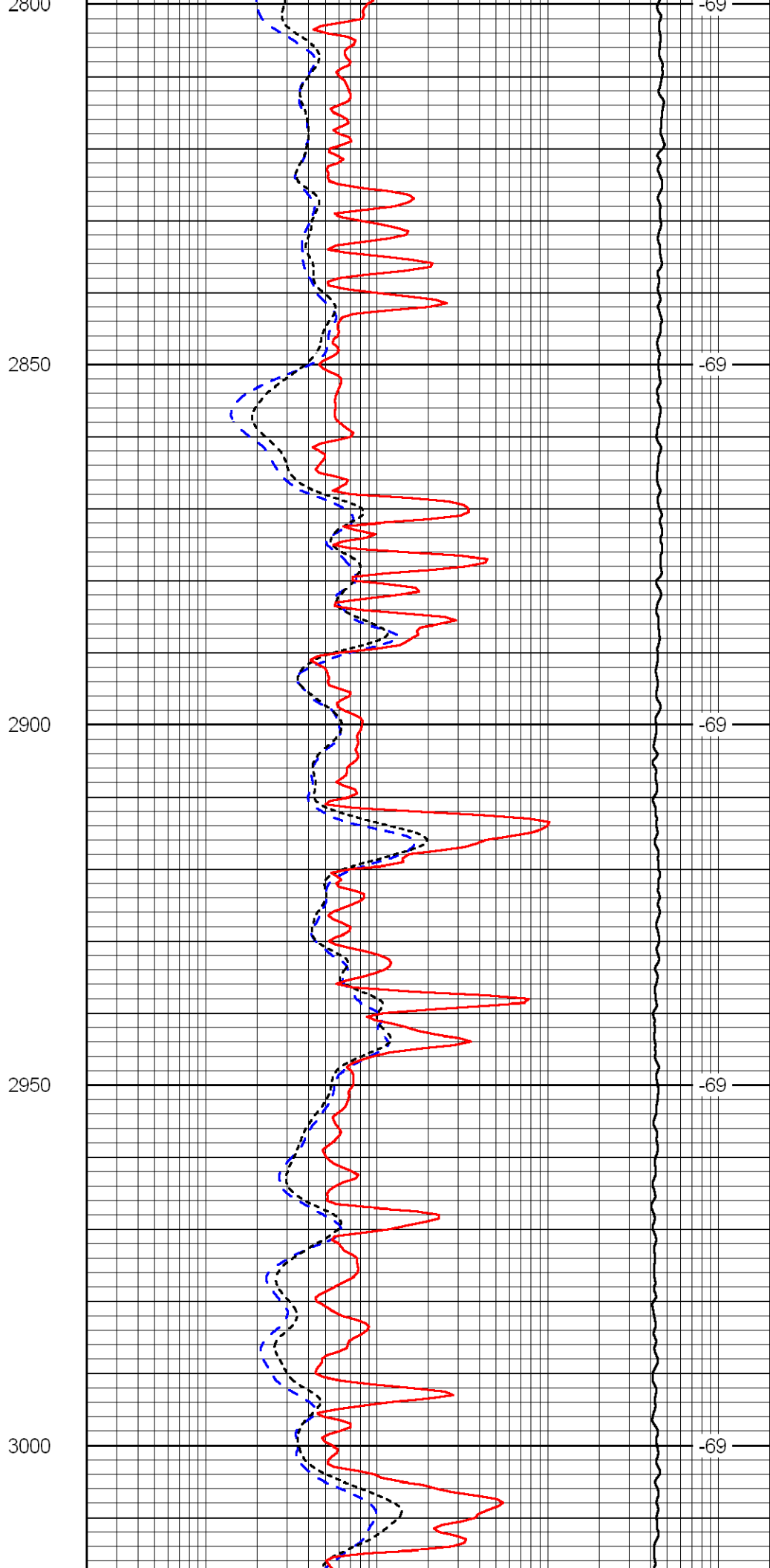
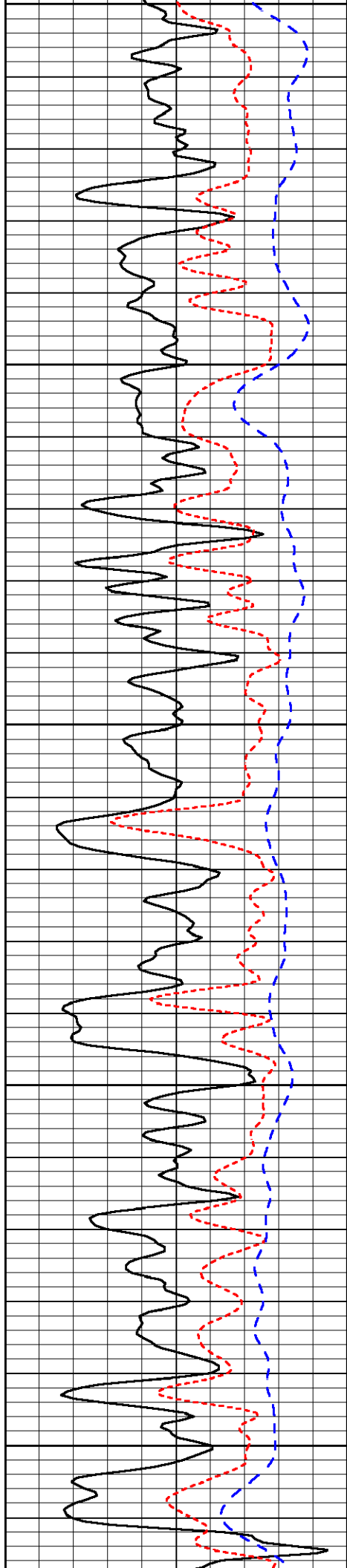
-66

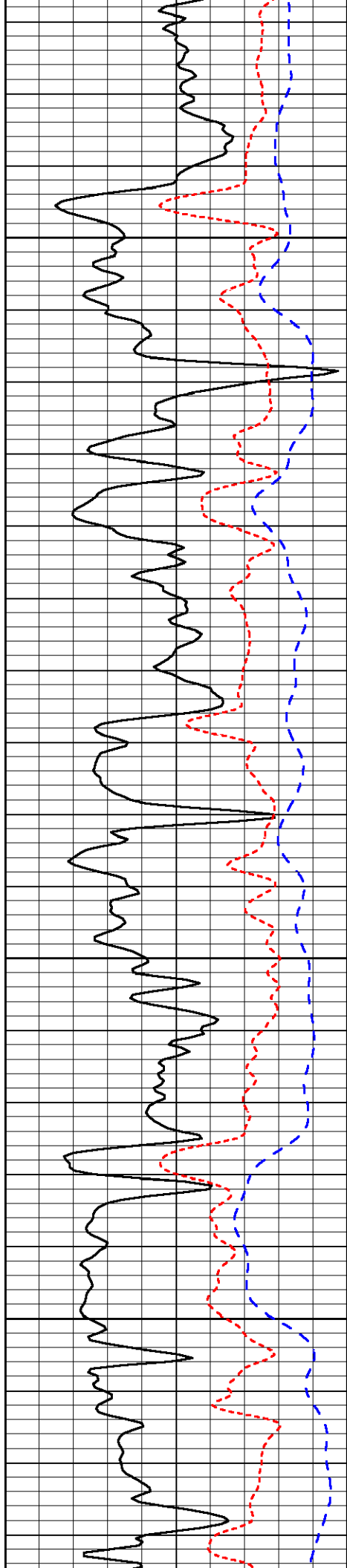
-66

-70

-69





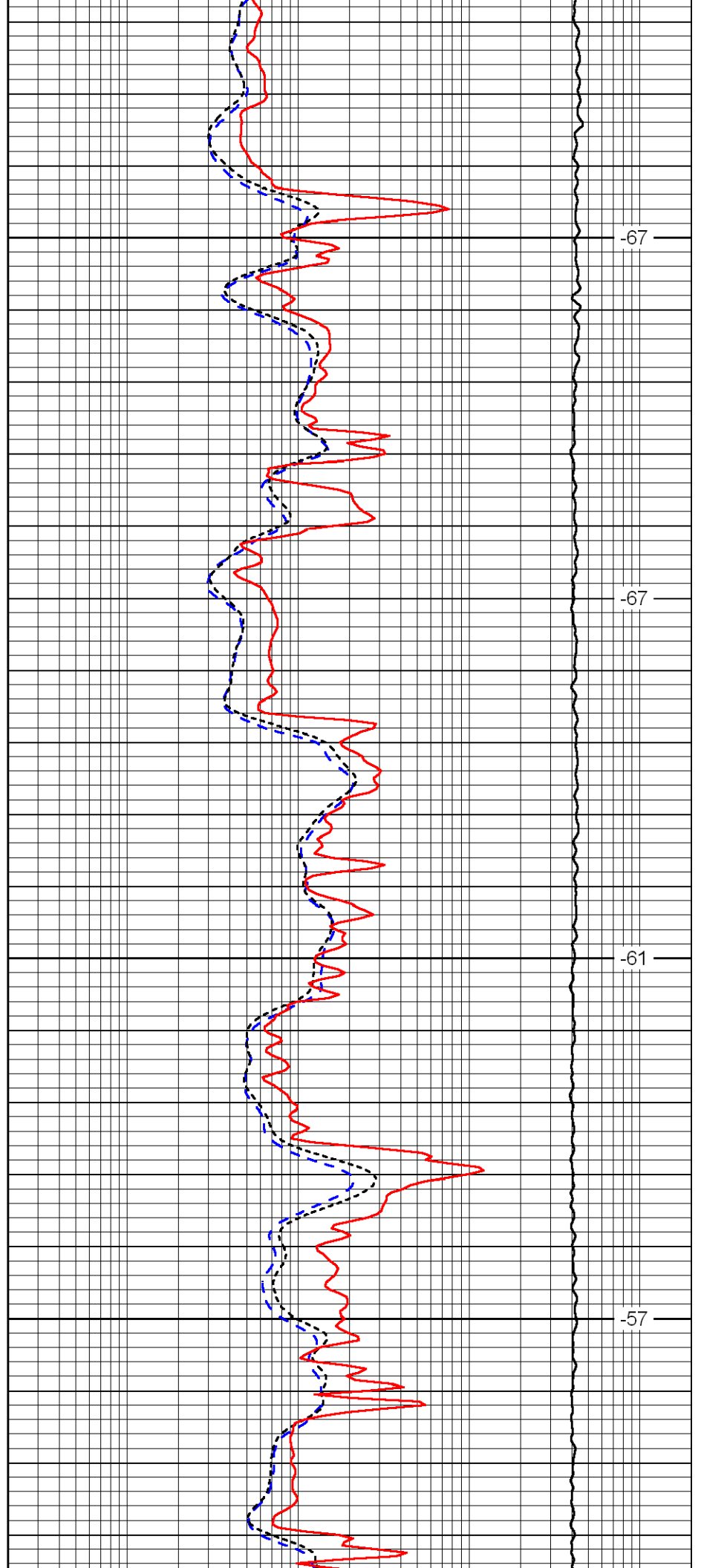


3050

3100

3150

3200

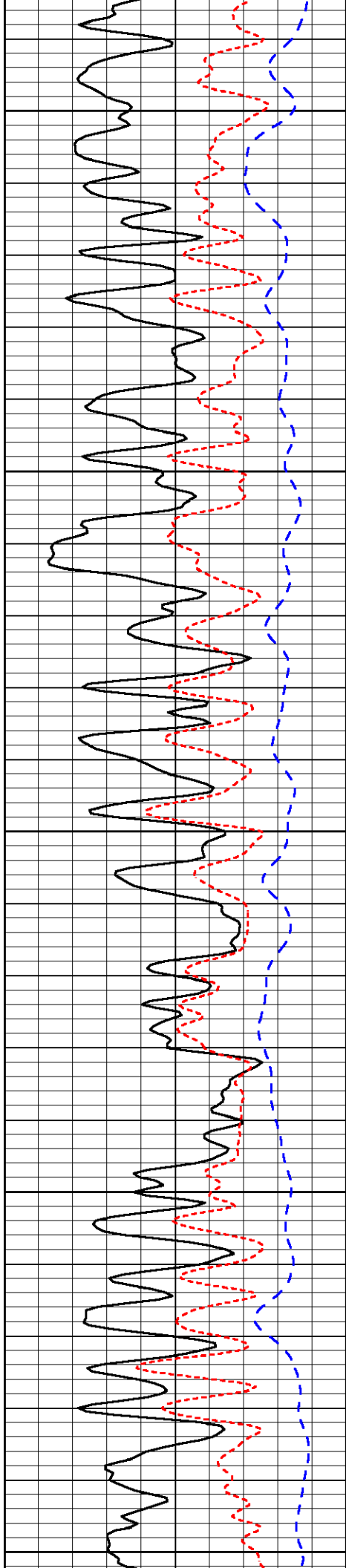


-67

-67

-61

-57



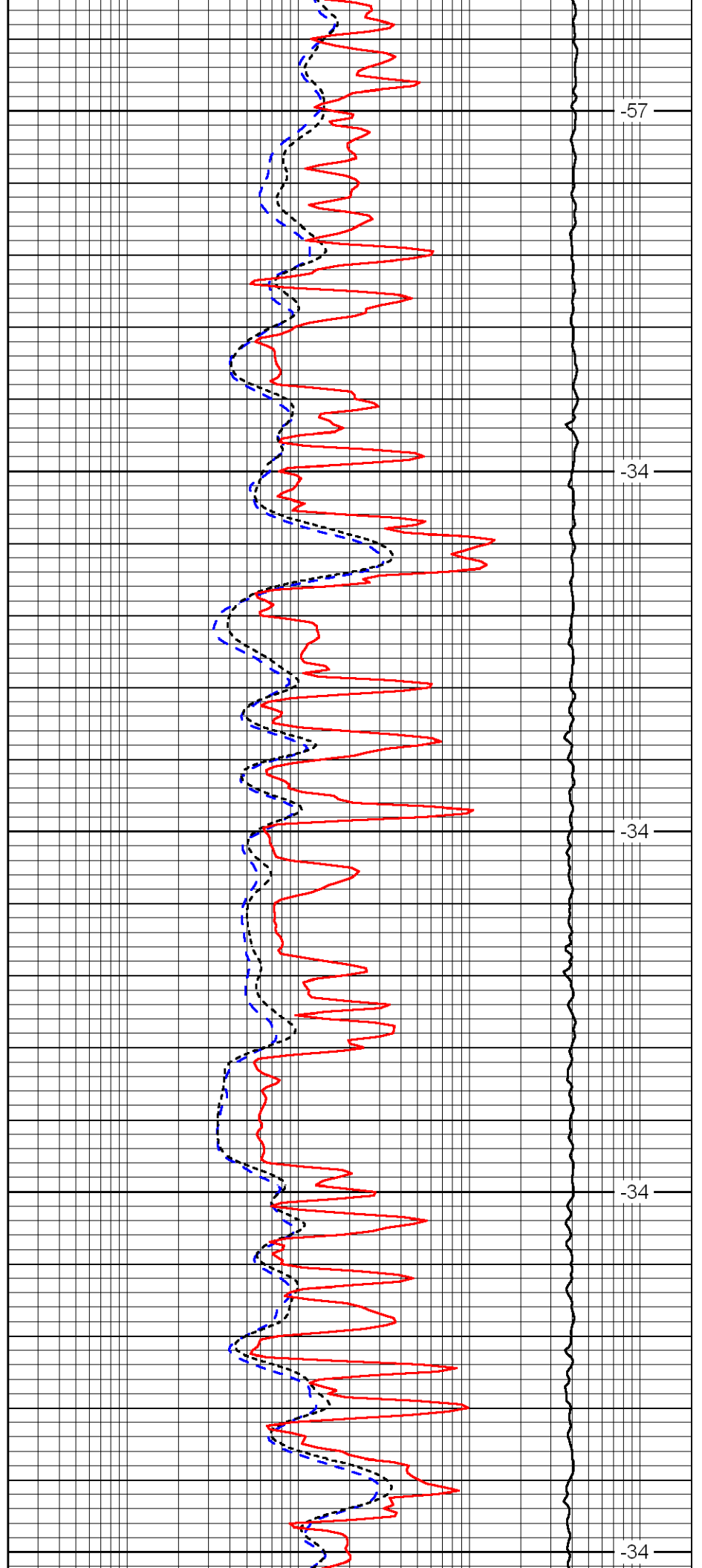
3250

3300

3350

3400

3450



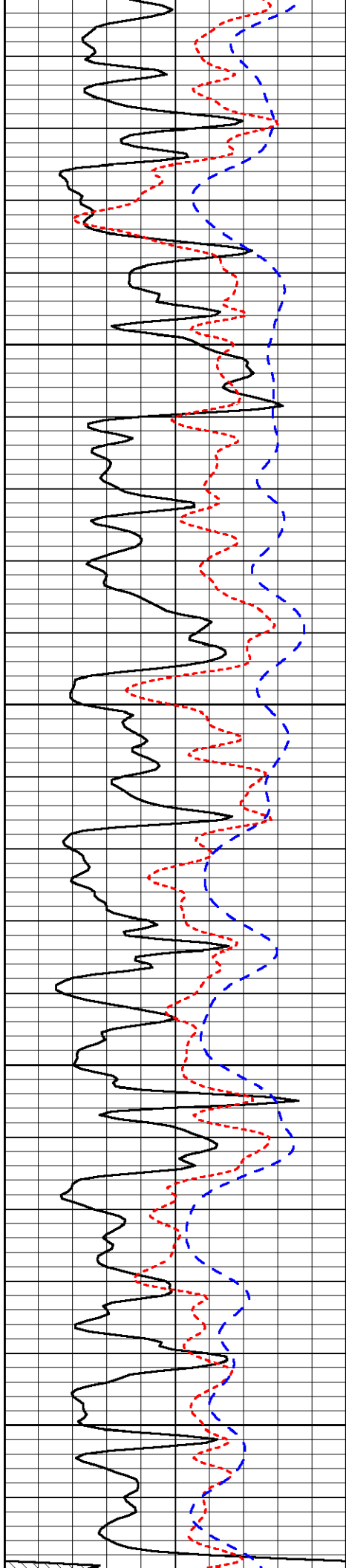
-57

-34

-34

-34

-34

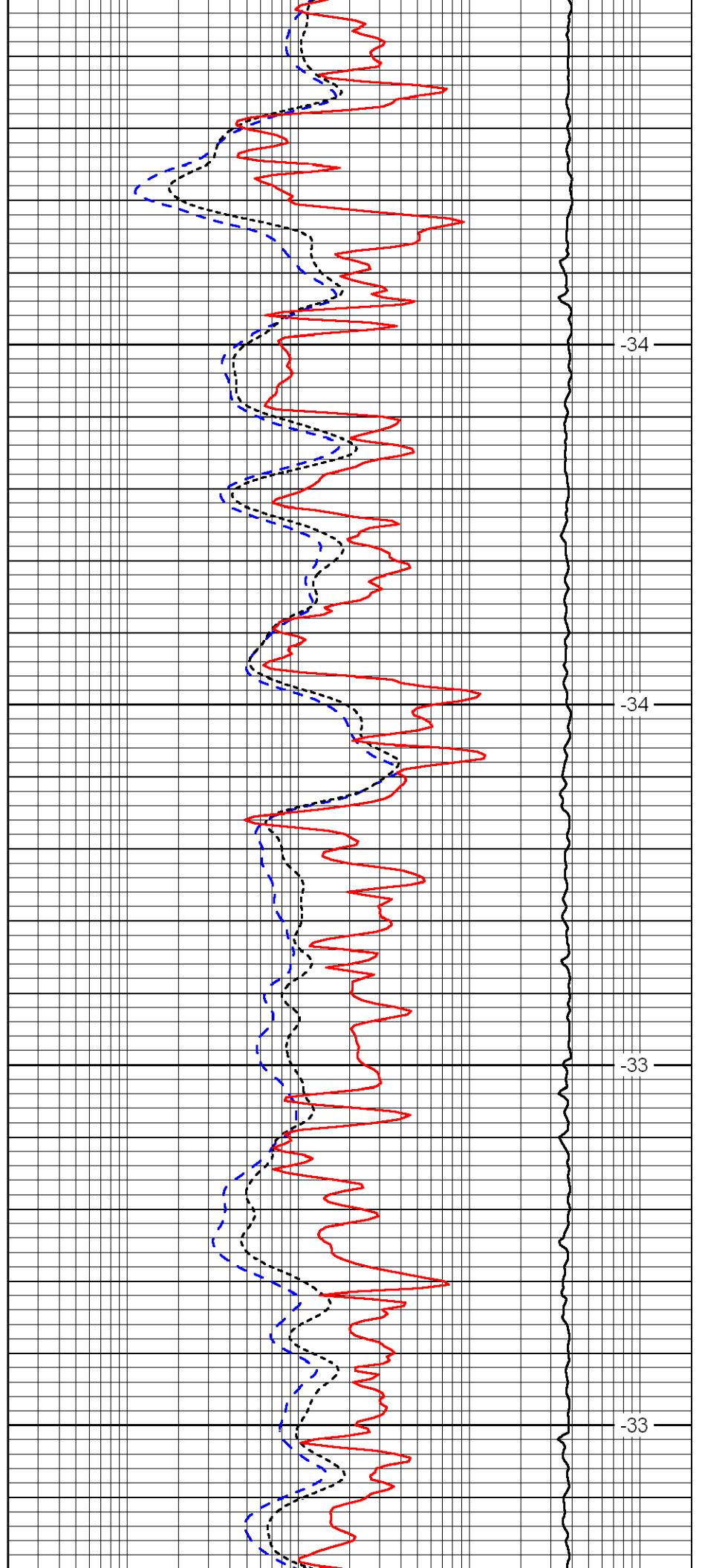


3500

3550

3600

3650

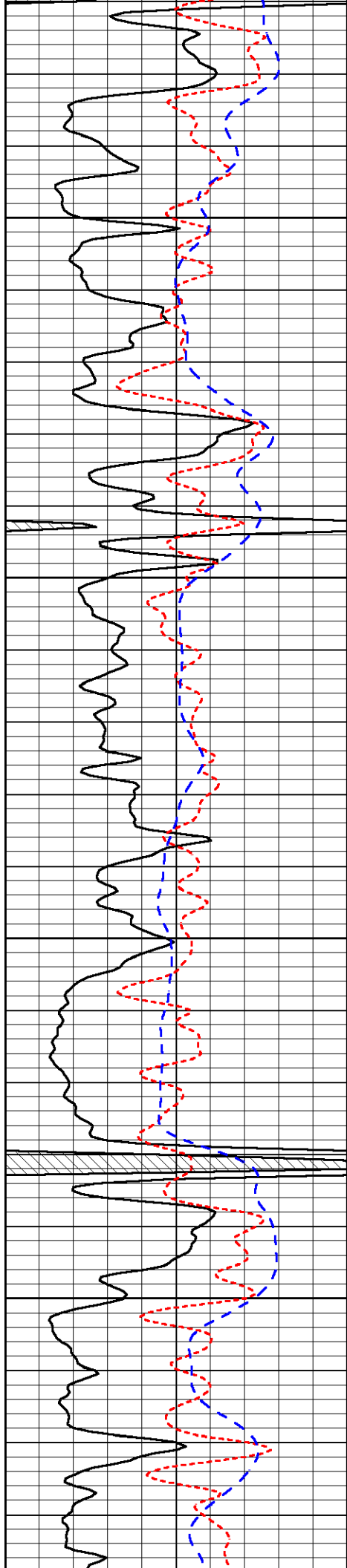


-34

-34

-33

-33

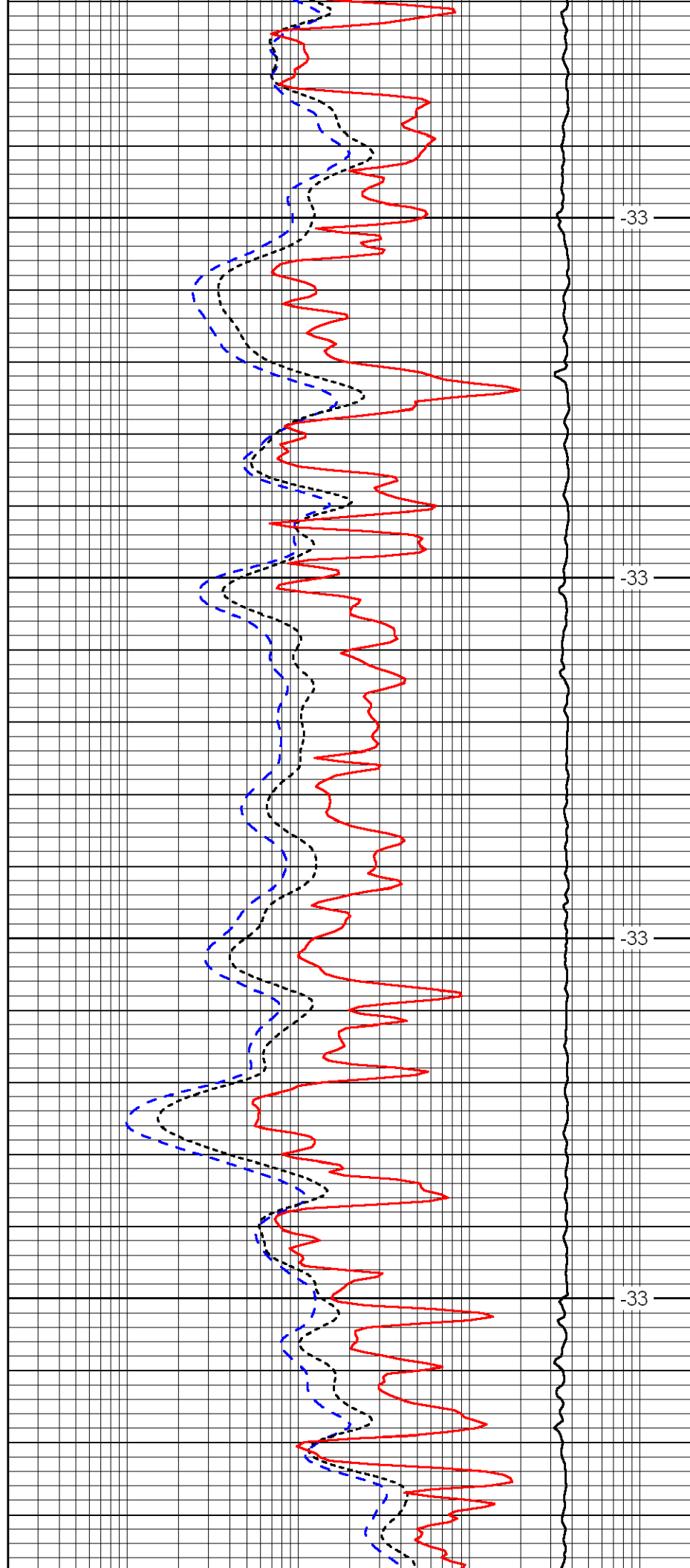


3700

3750

3800

3850

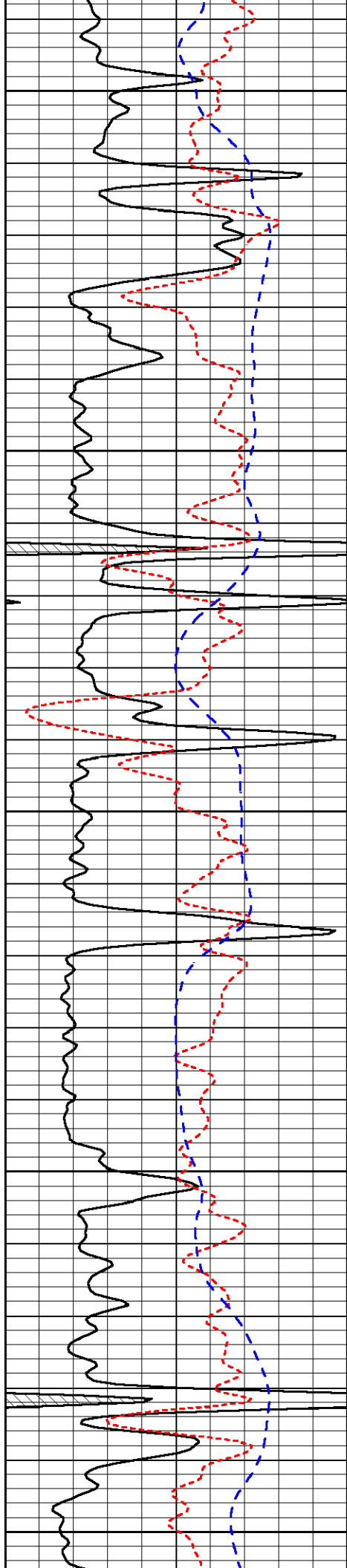


-33

-33

-33

-33



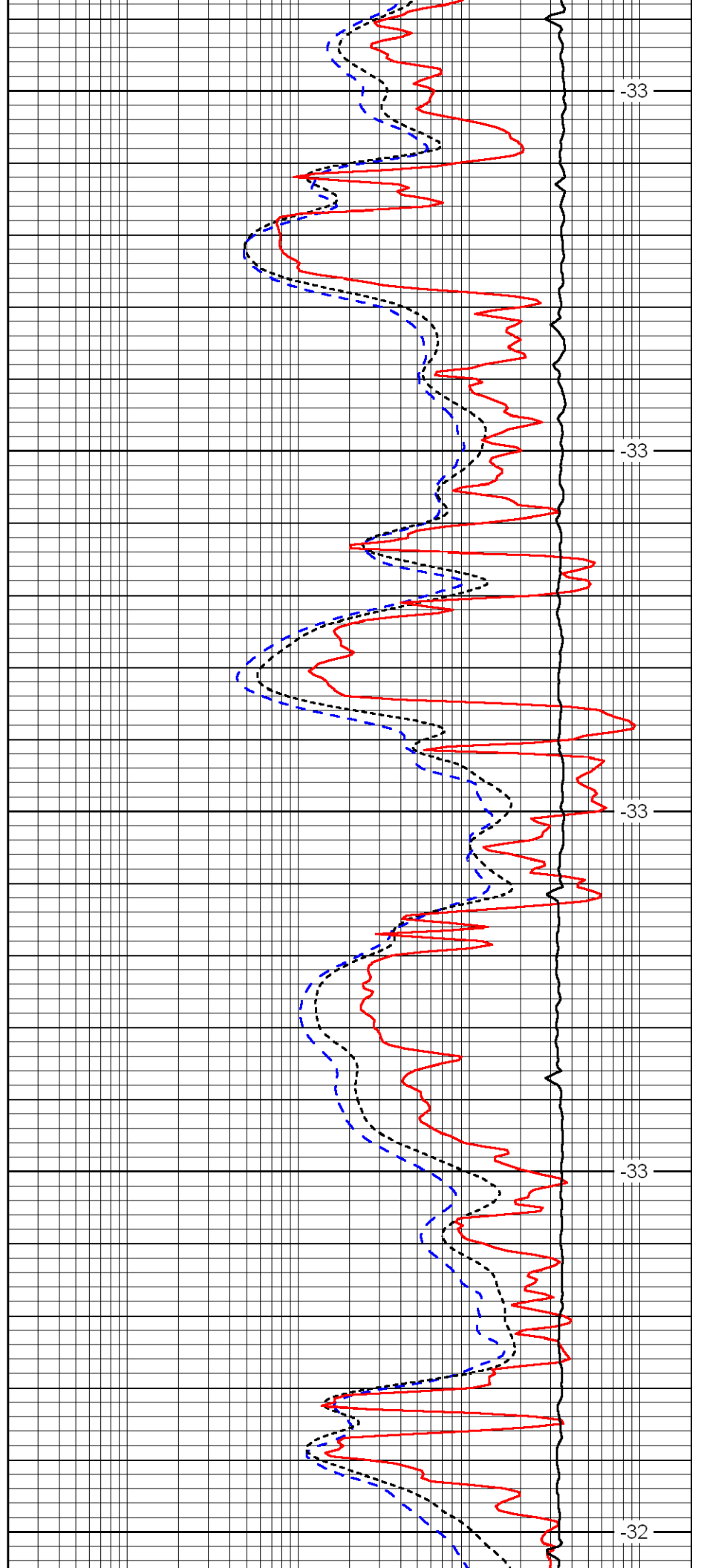
3900

3950

4000

4050

4100



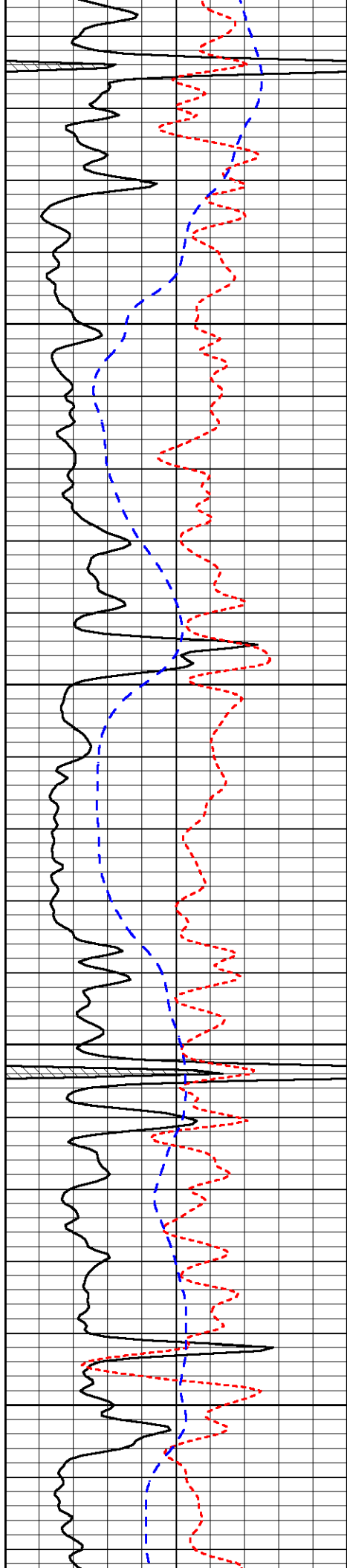
-33

-33

-33

-33

-32

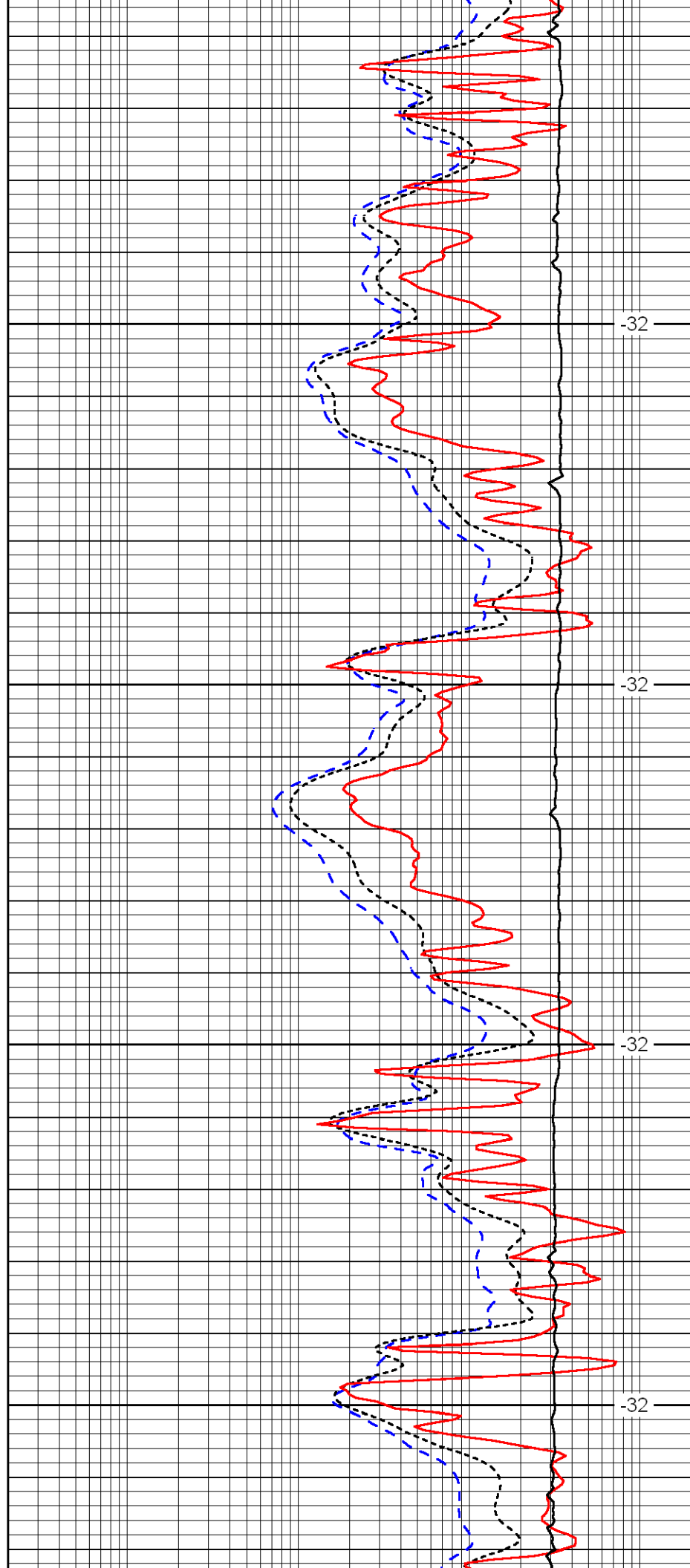


4150

4200

4250

4300

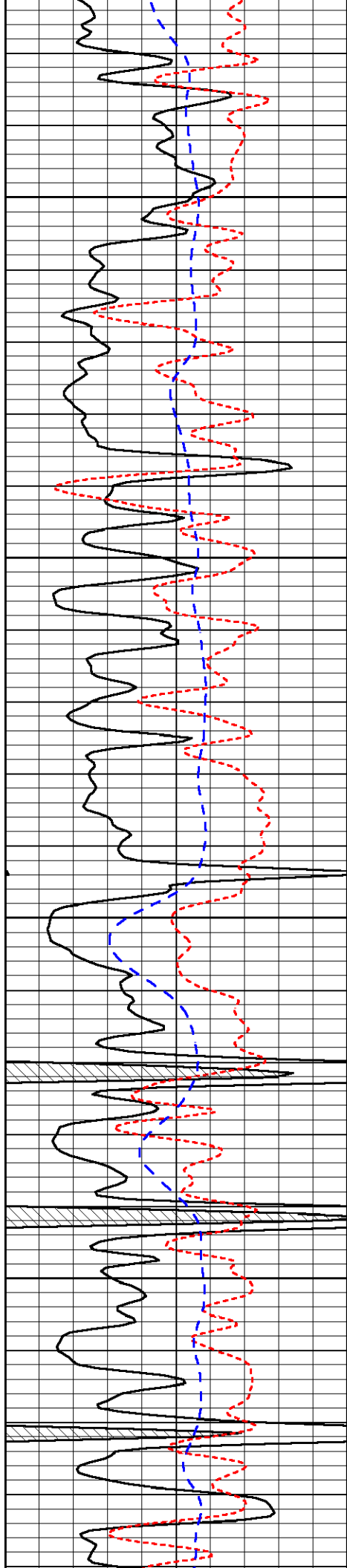


-32

-32

-32

-32

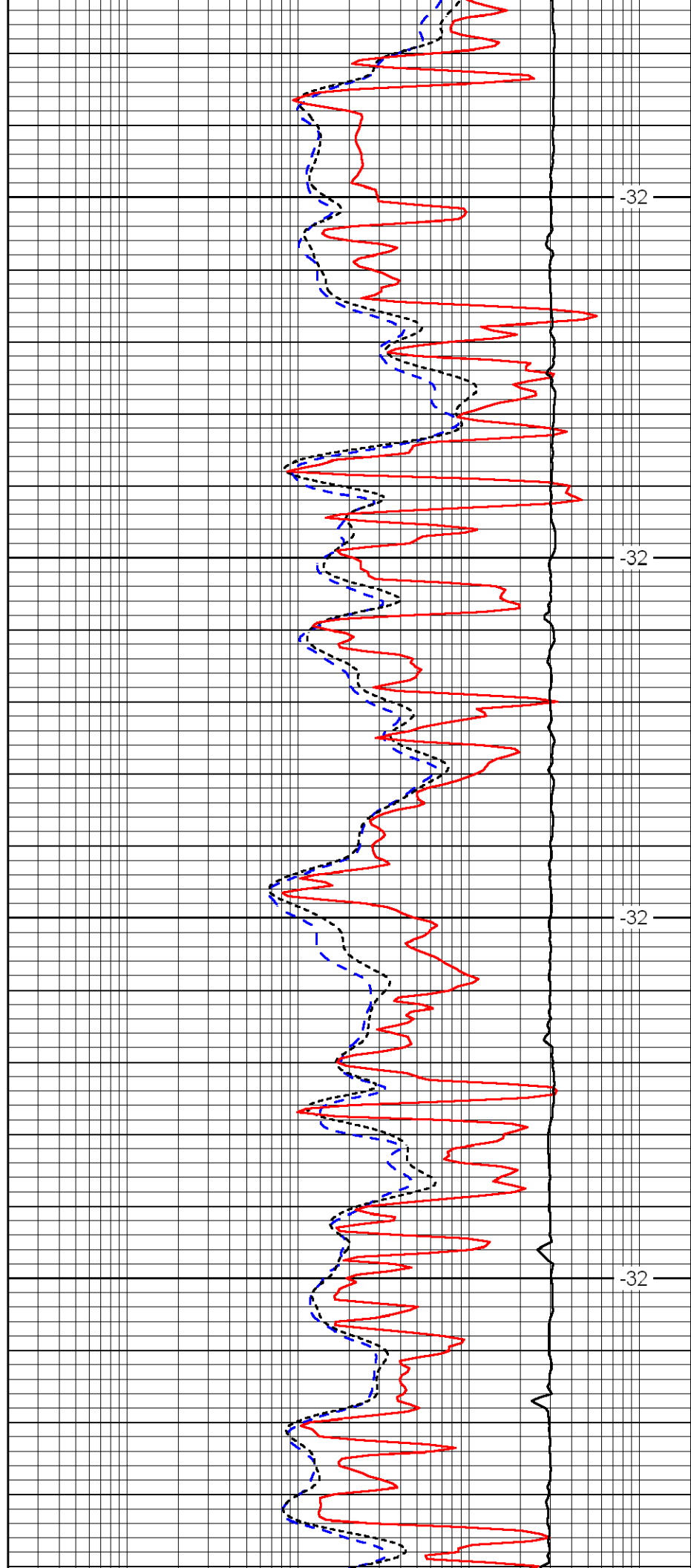


4350

4400

4450

4500

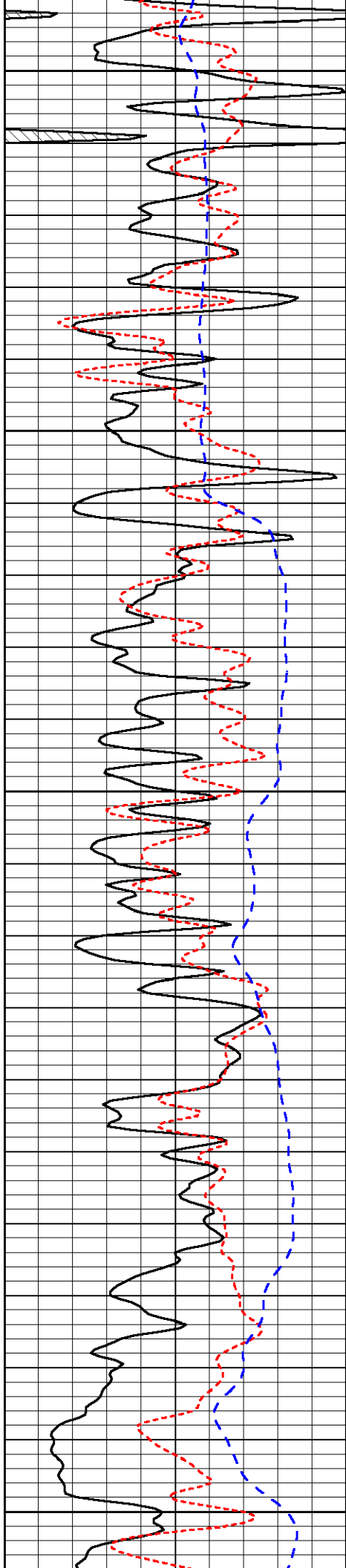


-32

-32

-32

-32



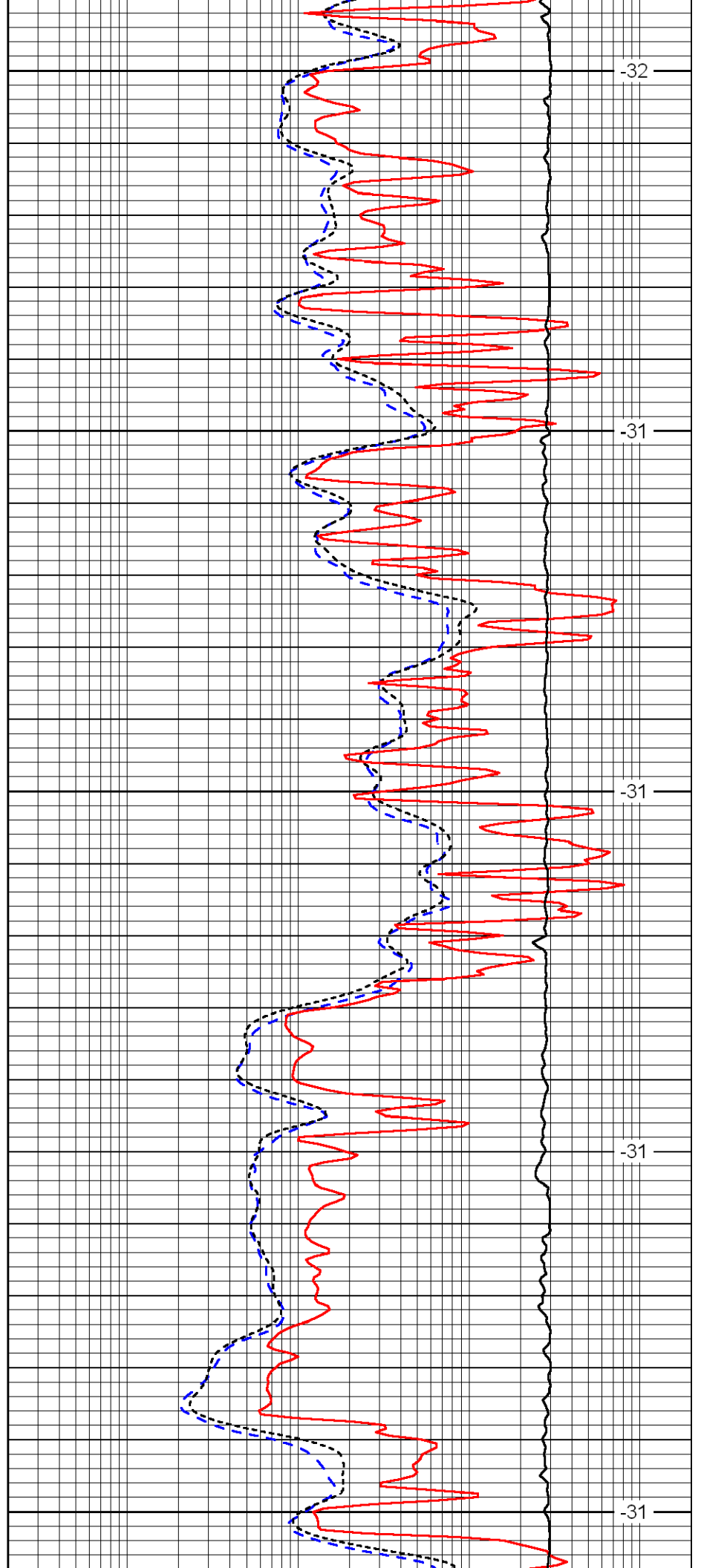
4550

4600

4650

4700

4750



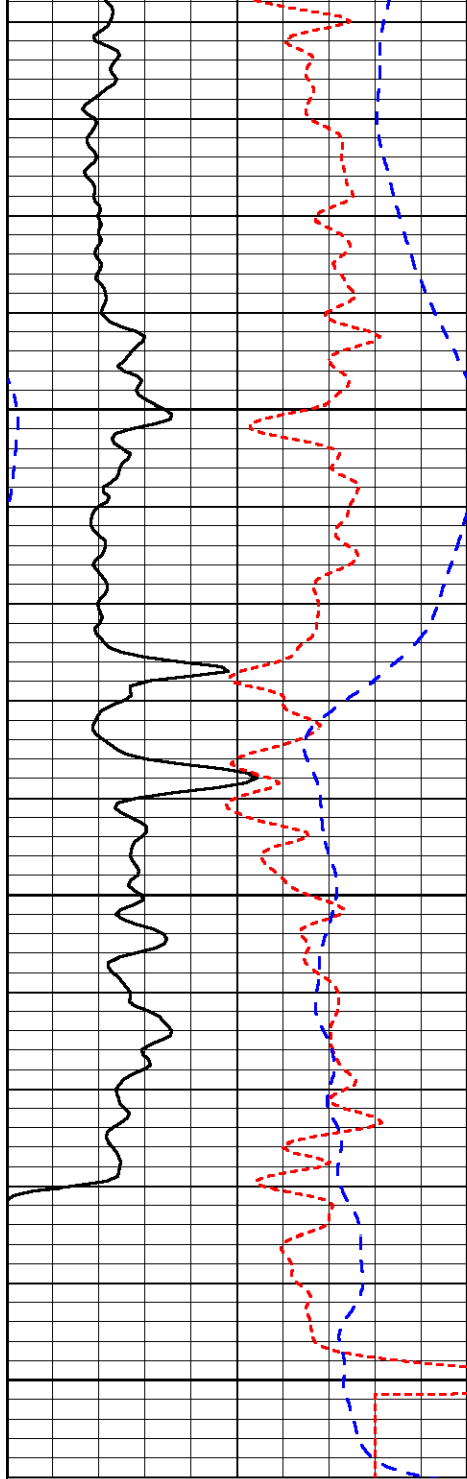
-32

-31

-31

-31

-31

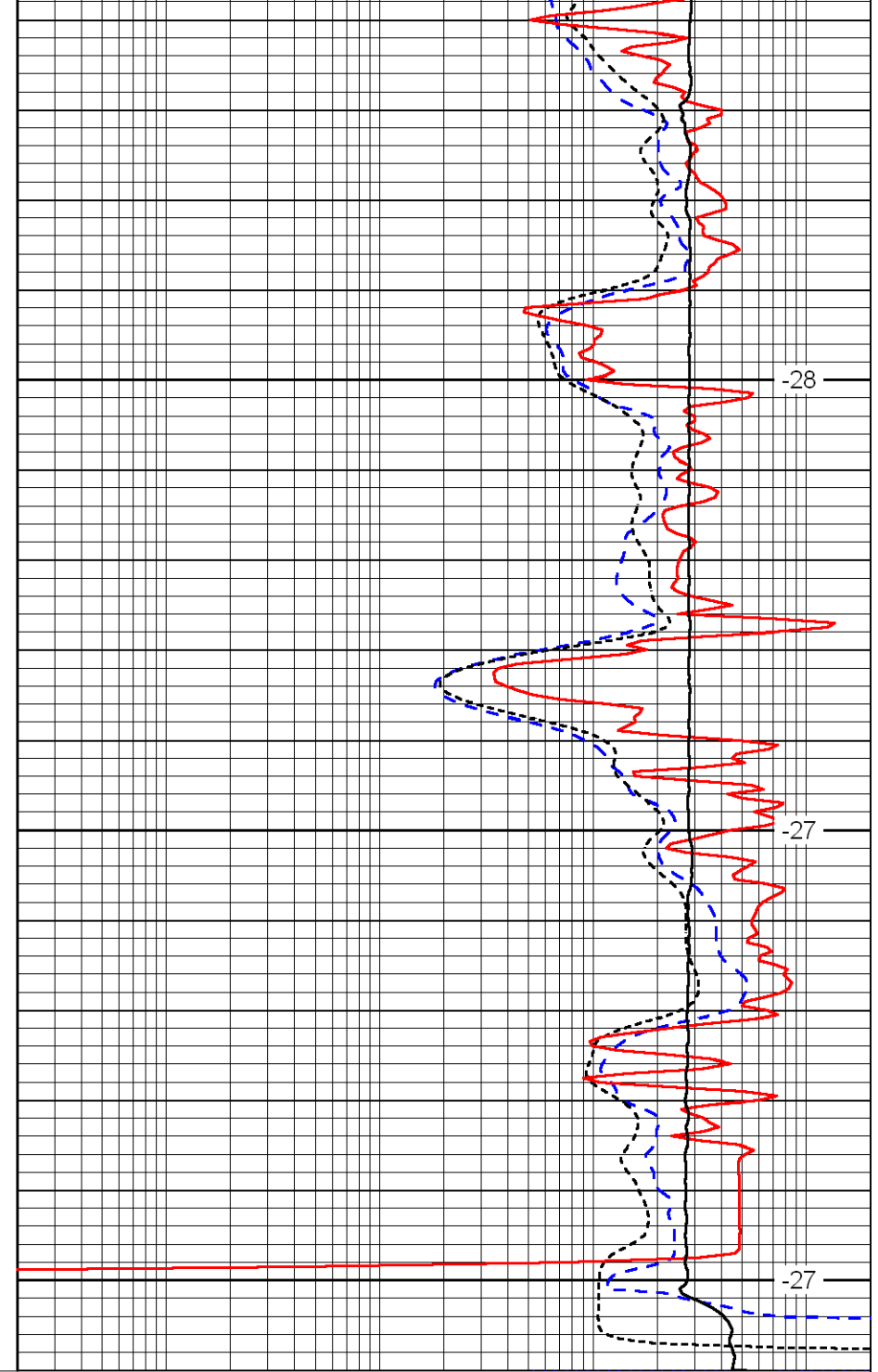


0	Gamma Ray	150
-160	RXO/RT	40
-200	SP	0

4800

4850

4900



0.2	Deep Resistivity	2000
0.2	Medium Resistivity	2000
0.2	Shallow Resistivity	2000
10000	Line Tension	0

LSPD