



Pioneer Energy Services

Microresistivity Log

API No.	15-055-22,179-00-00	
Company	Murfin Drilling Company, Inc.	
Well	Marabelle No. 1-4	
Field	Wildcat	
County	Finney	State
		Kansas
Location	1100' FSL & 1000' FEL	
Sec: 4	Twp: 21 S	Rge: 34 W
Permanent Datum	Ground Level	Elevation 2983
Log Measured From	Kelly Bushing	11 Ft. Above Perm. Datum
Drilling Measured From	Kelly Bushing	
		Other Services CNL/CDL DIL/BHCS
		Elevation K.B. 2994 D.F. G.L. 2983

Date	9/25/2012
Run Number	Two
Depth Driller	4900
Depth Logger	4902
Bottom Logged Interval	4901
Top Log Interval	3450
Casing Driller	8.625 @ 229
Casing Logger	225
Bit Size	7.875
Type Fluid in Hole	Chemical
Salinity, ppm CL	5000
Density / Viscosity	9.4 56
pH / Fluid Loss	9.5 8.8
Source of Sample	Flowline
Rm @ Meas. Temp	.55 @ 70
Rmf @ Meas. Temp	.41 @ 70
Rmc @ Meas. Temp	.74 @ 70
Source of Rmf / Rmc	Charts
Rm @ BHT	.31 @ 125
Operating Rig Time	5 Hours
Max Rec. Temp. F	125
Equipment Number	15
Location	Hays
Recorded By	D.Kerr
Witnessed By	Jeff Christian

<<< Fold Here >>>

All interpretations are opinions based on inferences from electrical or other measurements and we cannot and do not guarantee the accuracy or correctness of any interpretation, and we shall not, except in the case of gross or willful negligence on our part, be liable or responsible for any loss, costs, damages, or expenses incurred or sustained by anyone resulting from any interpretation made by any of our officers, agents or employees. These interpretations are also subject to our general terms and conditions set out in our current Price Schedule.

Comments

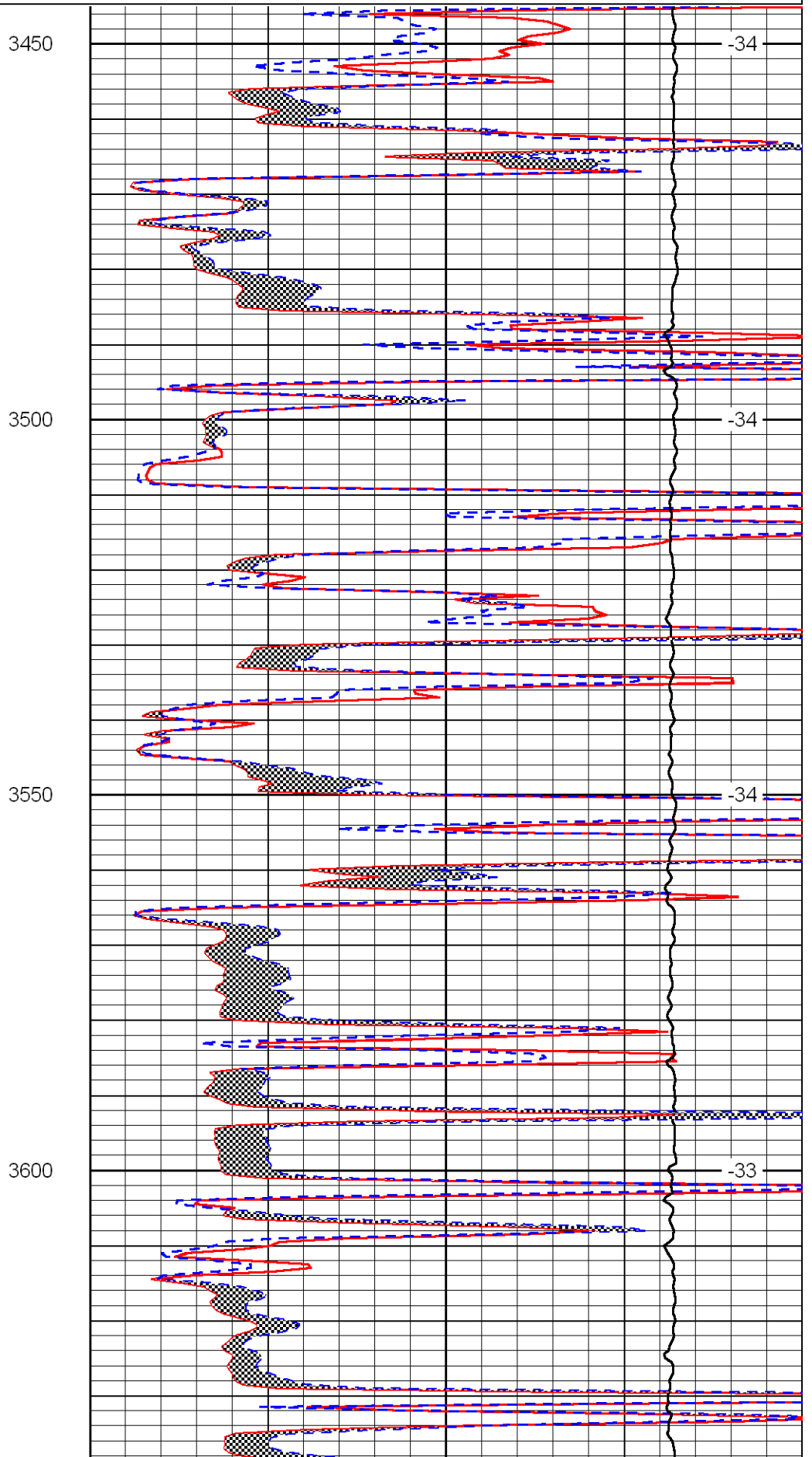
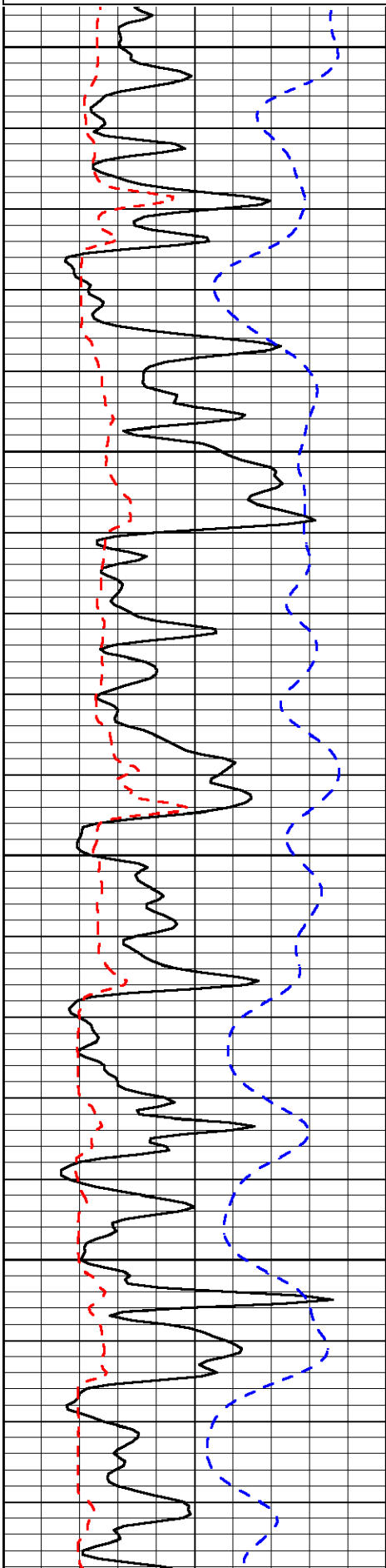
Thank you for using Log-Tech, Inc.
(785) 625-3858

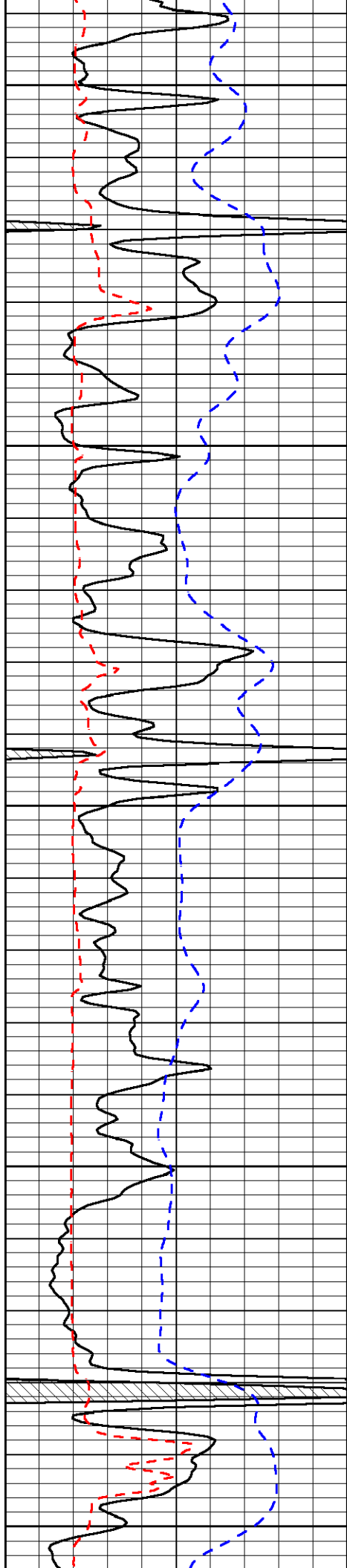
Scott City KS, South to the Finney-Scott County Line,
8 1/2 West, 3/4 South, West Into

Database File: murfin_marabelle_1_4hd.db
 Dataset Pathname: DIL/murfstk
 Presentation Format: micro
 Dataset Creation: Tue Sep 25 22:34:15 2012
 Charted by: Depth in Feet scaled 1:240

0	Gamma Ray	150
6	MCAL (GAPI)	16
2.875	Mud Cake (GAPI)	7.875
-200	SP	0

0	Micro Inverse 1 X 1	40
0	Micro Normal 2"	40
10000	Line Weight	0
	LSPD	





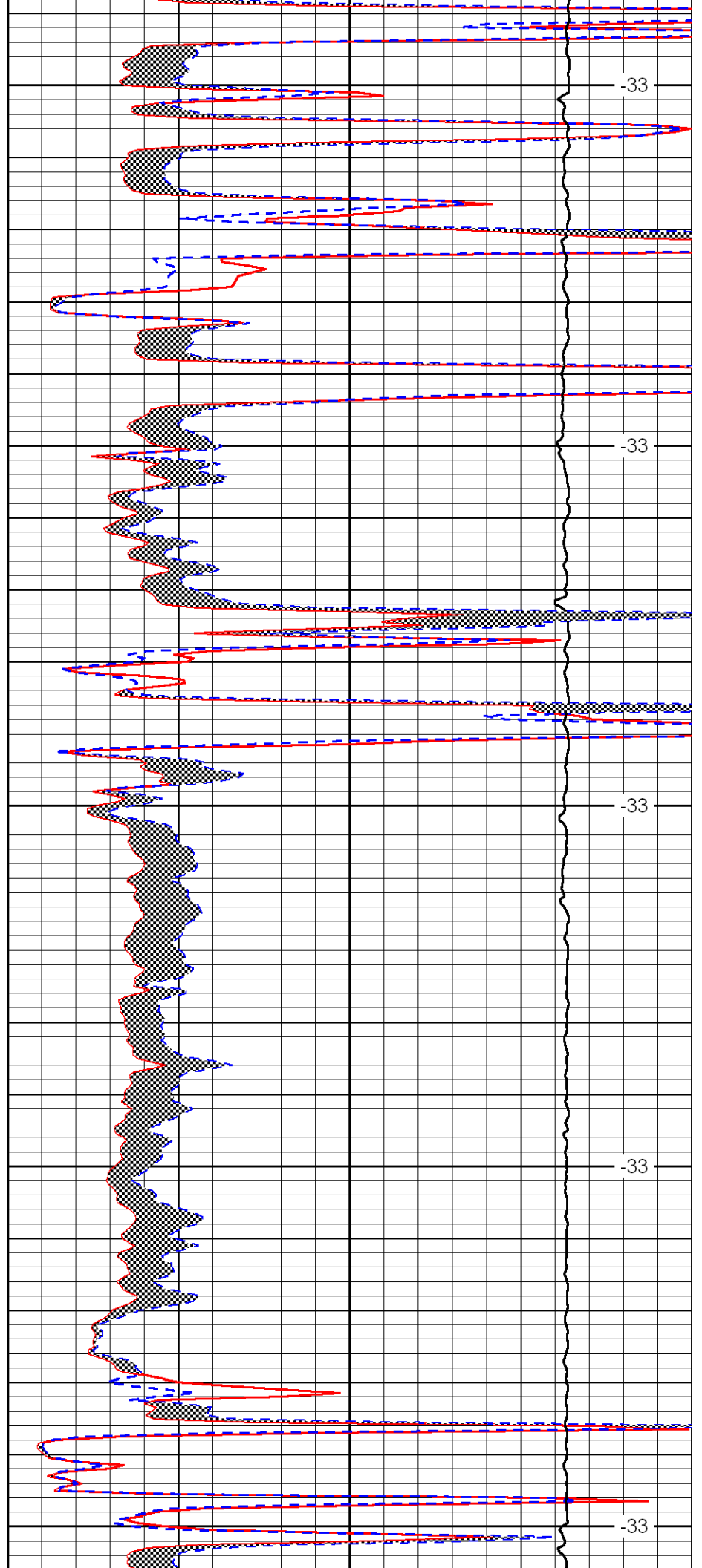
3650

3700

3750

3800

3850



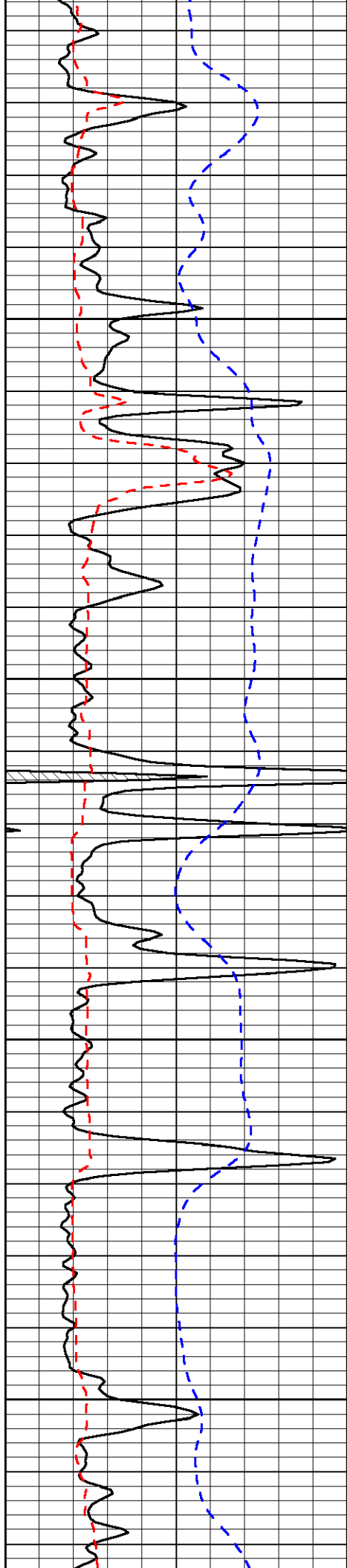
-33

-33

-33

-33

-33

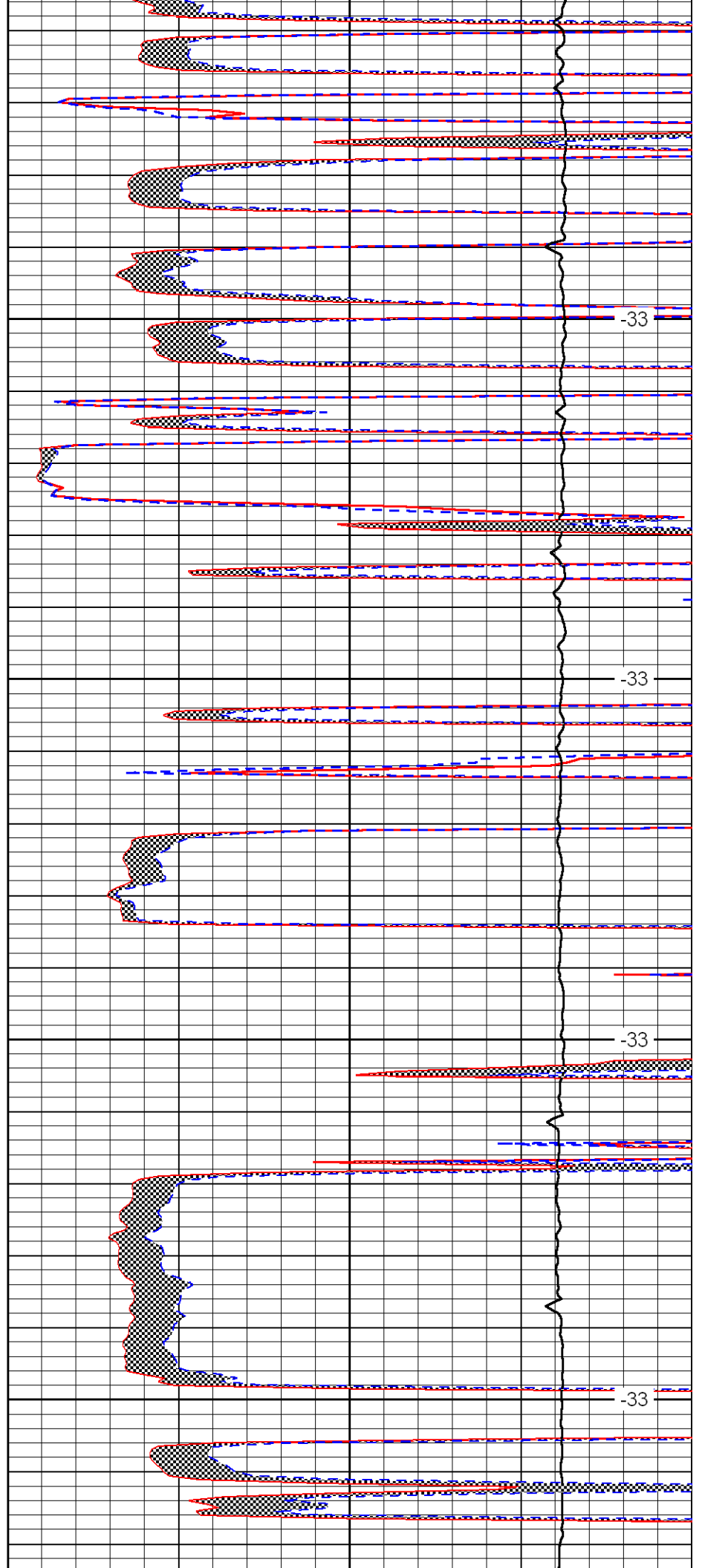


3900

3950

4000

4050

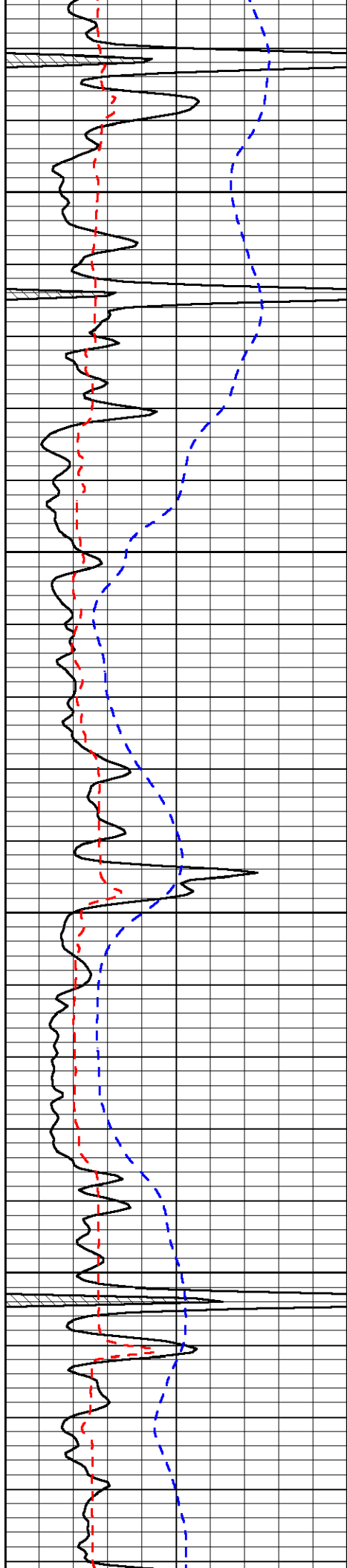


-33

-33

-33

-33

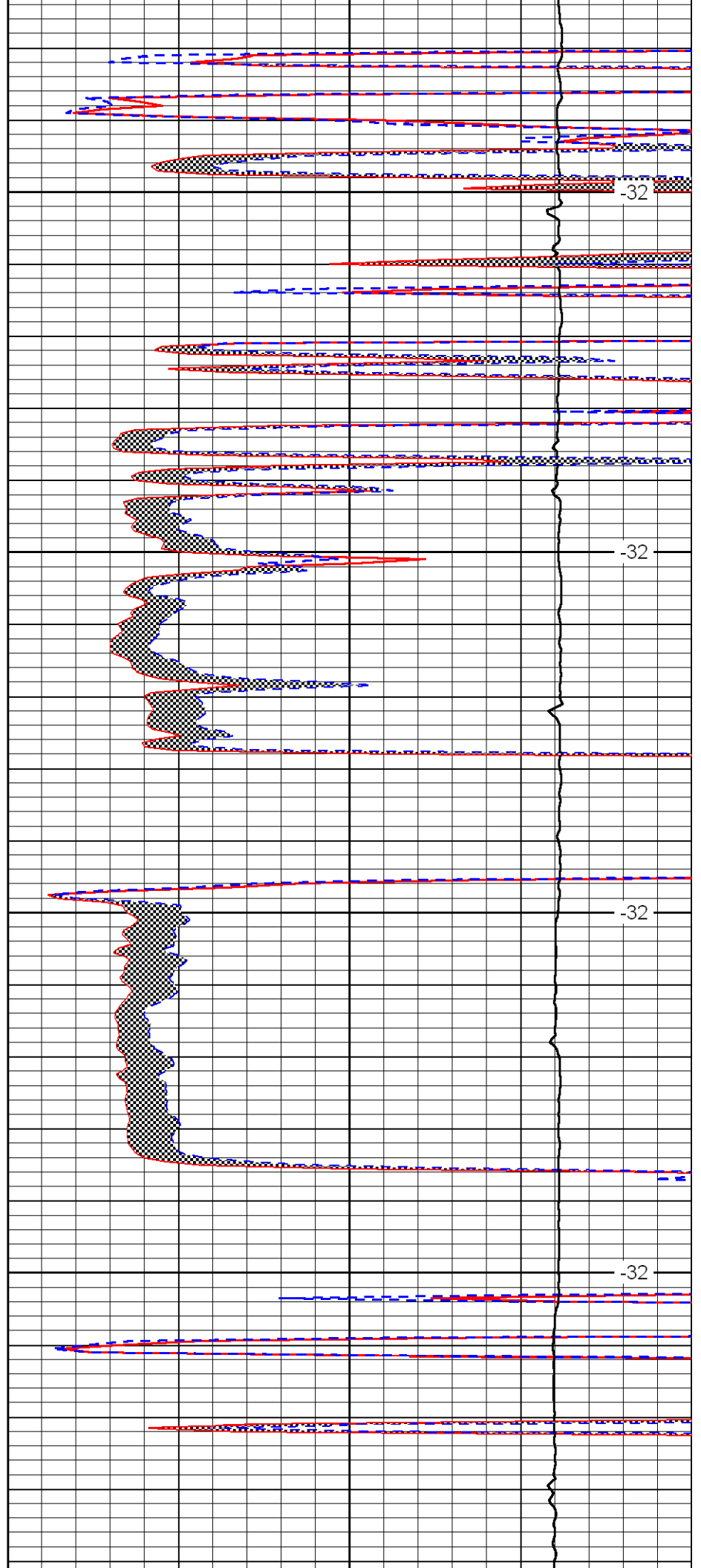


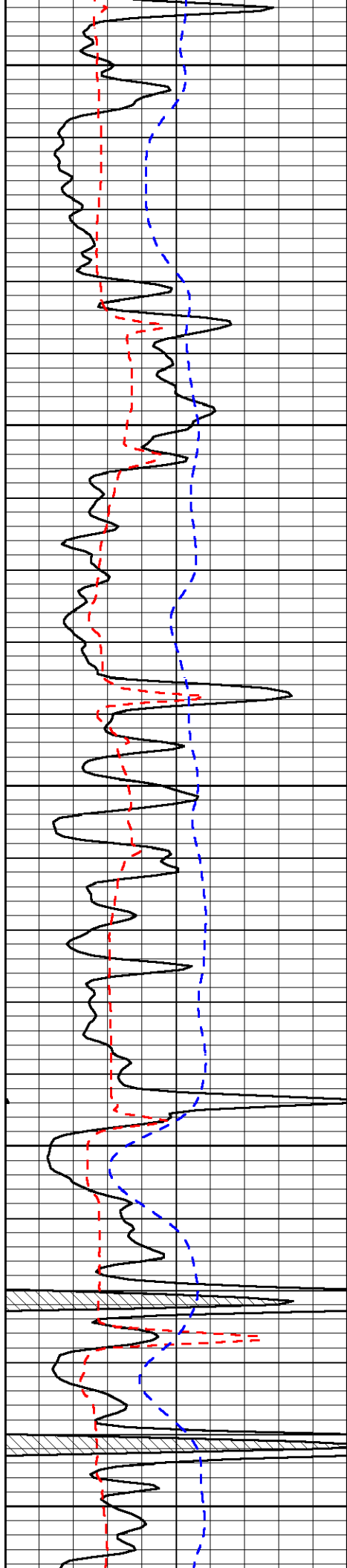
4100

4150

4200

4250





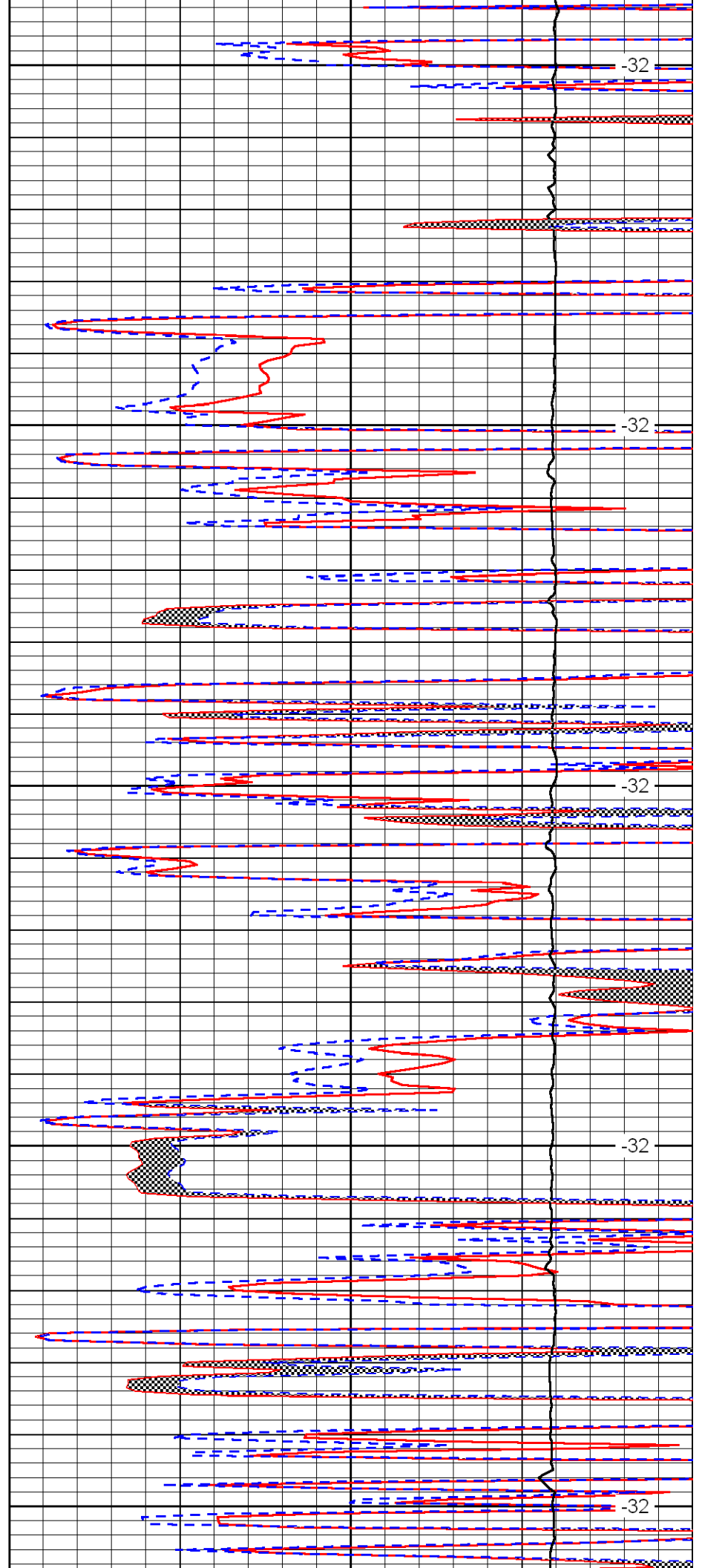
4300

4350

4400

4450

4500



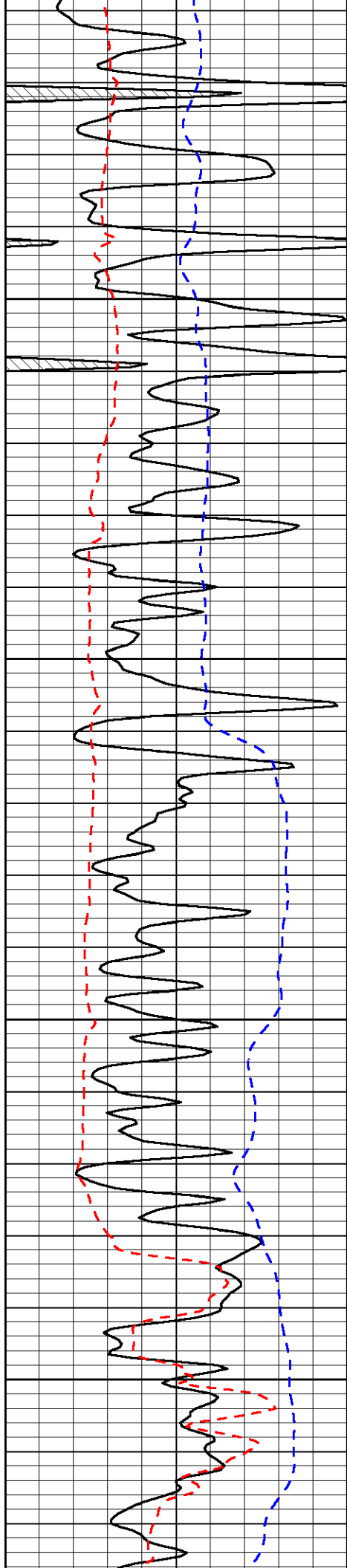
-32

-32

-32

-32

-32

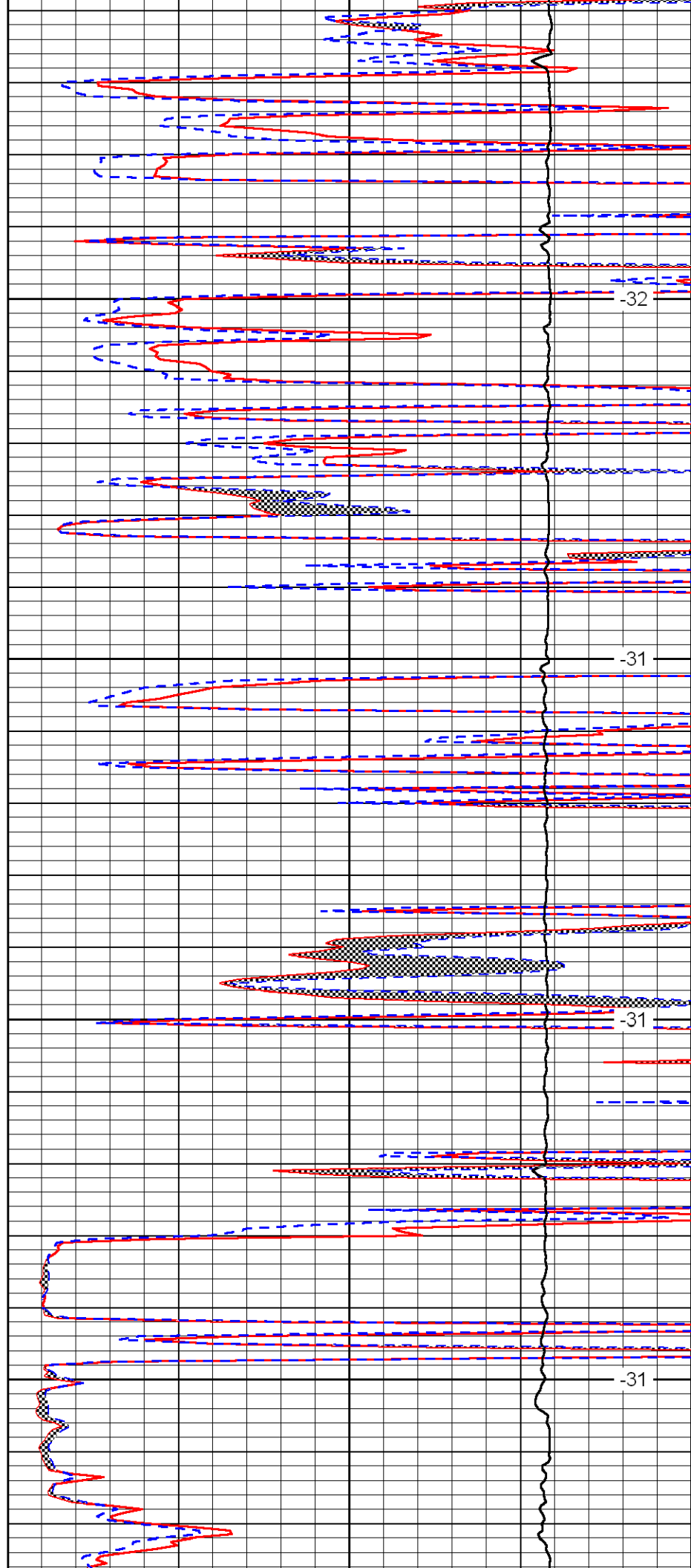


4550

4600

4650

4700

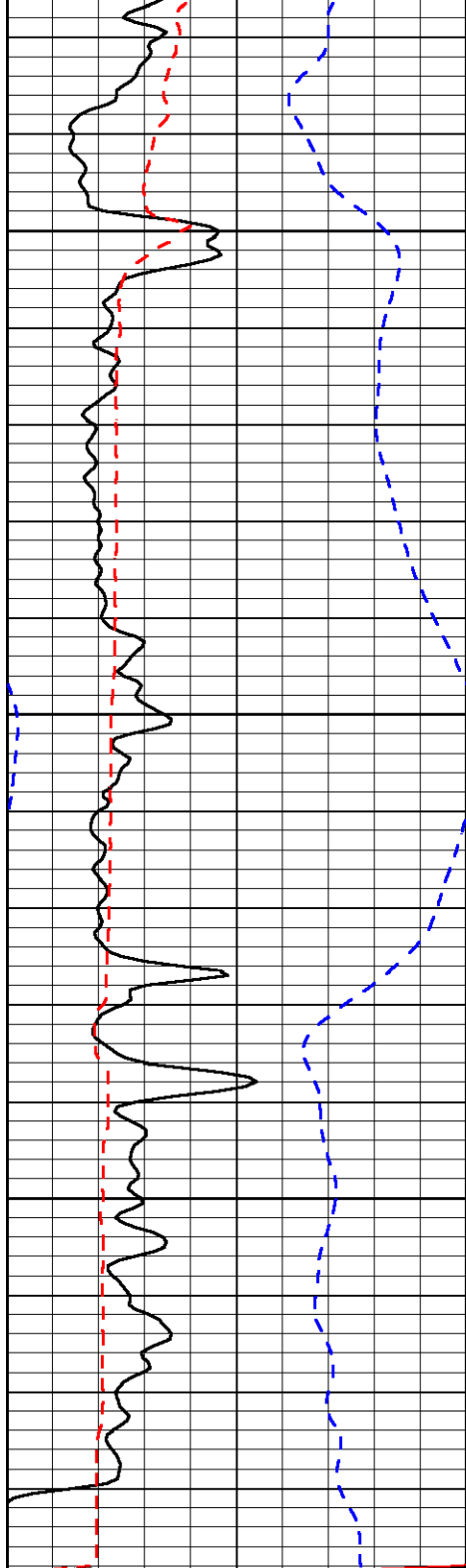


-32

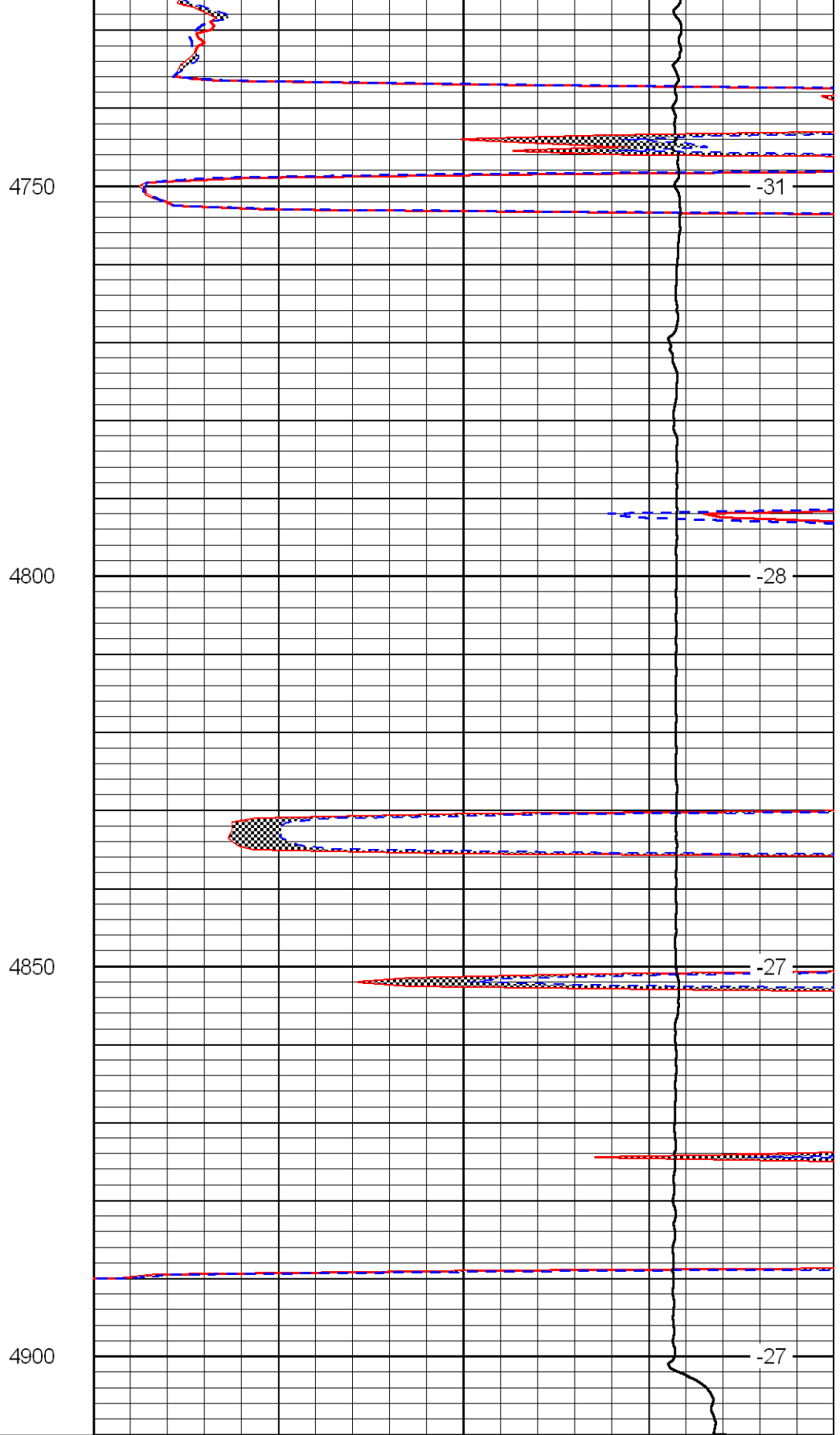
-31

-31

-31



0	Gamma Ray	150
6	MCAL (GAPI)	16
2.875	Mud Cake (GAPI)	7.875
-200	SP	0



0	Micro Inverse 1 X 1	40
0	Micro Normal 2''	40
10000	Line Weight	0
		LSPD