

**MIDWEST SURVEYS**  
 LOGGING - PERFORATING - CONSULTING SERVICES  
 P.O. Box 88, Osawatomie, KS 66064  
 913 / 735 - 2128

**GAMMA RAY / NEUTRON / CCL**

File No. Company  
 Haas Petroleum, LLC.

Well Massey No. 2-HP  
 Field Winterscheid

County Woodson State Kansas

Location 2475 FSU & 2310' FEL  
 N2-NW-NE

Sec. 35 Twp. 23S Rge. 14E  
 Permian Datum Top. 23S  
 Log Measured From GB 4' From GL  
 Drilling Measured From KB 4' From GL

Date 11-06-2012  
 Run Number One  
 Depth Driller 1710.4  
 Depth Logger 1700.4  
 Bottom Logged Interval 200.0  
 Top Log Interval 200.0  
 Fluid Level Full

Perforate  
 Other Services

Elevation 1115'  
 KB 1119'  
 O.F. N/A  
 O.L. 1115'

Stemmy / Viscosity NA  
 Density / PPM Cl NA  
 Max. Record Temp NA  
 Estimated Cement Top 0.0

Equipment No. 102 Location Shawnee  
 Recorder By Steve Winkson

Witnessed By Mark Haas

BORE-HOLE RECORD  
 RUN BIT FROM TO SIZE  
 1225' 0.0 4.00  
 1710' 0.75' 4.00

CASINGS RECORD  
 VCGI FROM TO TO  
 200# 0.0 8525' 4.00  
 10.5# 1710.0 4.50' 10.5# 0.0  
 1742.5

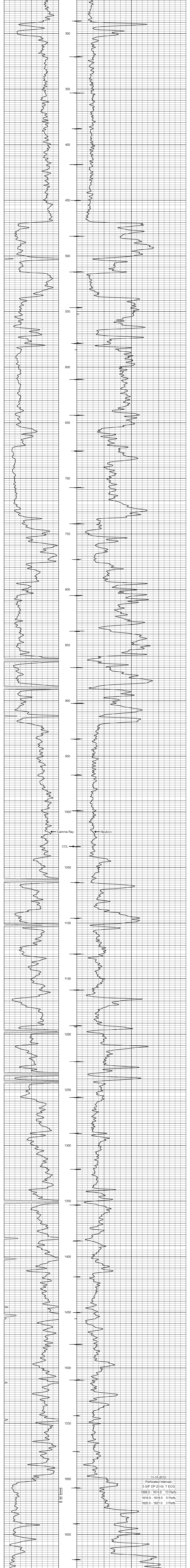
<<< Fold Here >>>

All interpretations are opinions based on inferences from electrical or other measurements and we cannot and do not guarantee the accuracy or correctness of any interpretation, and we shall not, except in the case of gross or willful negligence on our part, be liable or responsible for any loss, costs, damages, or expenses incurred or sustained by anyone resulting from any interpretation made by any of our officers, agents or employees. These interpretations are also subject to our general terms and conditions set out in our current Price Schedule.

Comments

Drilling Contractor :  
 Skyy Drilling Rig -2

Database File: massey2.db  
 Dataset Pathname: pass1  
 Presentation Format: gr-n-cl  
 Dataset Creation: Tue Nov 06 12:36:45 2012 by Log SCH 111116  
 Charted by: Depth in Feet scaled 1:240



11-15-2012  
 Perforated Intervals  
 3 3/8" DP 23 Gr. T ECG  
 1608.0 - 1614.0 13 Perfs  
 1616.0 - 1618.0 5 Perfs  
 1620.0 - 1621.0 3 Perfs