

MIDWEST SURVEYS
 LOGGING - PERFORATING - CONSULTING SERVICES
 P.O. Box 686, Osawatomie, KS 66064
 913 / 755 - 2128

GAMMA RAY / NEUTRON / CCL

File No. _____
 Company: **Haas Petroleum, LLC.**
 Well: **Massey No. 91-HP**
 Field: **Winterscheid**
 County: **Woodson** State: **Kansas**

Location: **685' T-SL & 3950' FEL**
 Other Services: _____
 Petrofate: _____

AP # 15-207-28,293
 Sec. 35 Twp. 23S Rge. 14E
 Permit/Datum: GL Elevation: 1146'
 Log Measured From: KB 1153'
 Drilling Measured From: KB 7' From GL Elevation: 1146'

Date: _____
 Run Number: 1735.0
 Depth Logger: 1735.0
 Bottom Logged Interval: 1734.0 - 200.0
 Log Interval: 200.0
 Fluid Level: _____

Type Fluid: _____
 Density / Specific Gravity: NA
 Sample / PPM Cl: NA
 Max Recorded Temp: NA
 Estimated Cement Top: 0.0
 Equipment No.: 122
 Location: Osawatomie
 Recorded By: Steve Winterscheid
 Witnessed By: Mark Haas

BORE-HOLE RECORD
 RUN NO. BIT FROM TO SIZE WGT. FROM TO
 1225 0.0 40.0 8.525 20.0# 0.0
 One 0.15 40.0 1750.0 4.50 10.5# 0.0

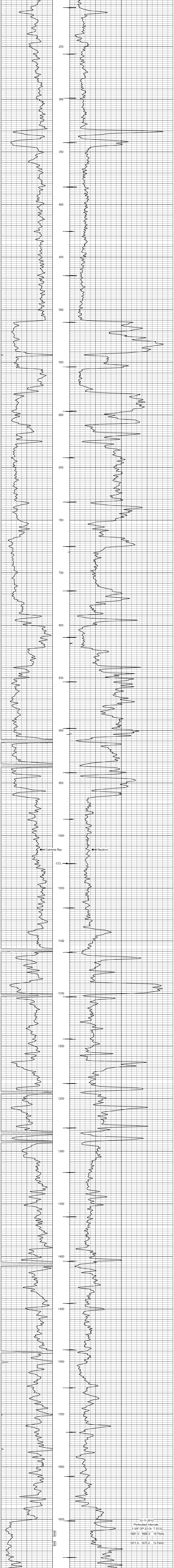
CASING RECORD
 TO 40.0
 1750.0

<<< Fold Here >>>

All interpretations are opinions based on inferences from electrical or other measurements and we cannot and do not guarantee the accuracy or correctness of any interpretation, and we shall not, except in the case of gross or willful negligence on our part, be liable or responsible for any loss, costs, damages, or expenses incurred or sustained by anyone resulting from any interpretation made by any of our officers, agents or employees. These interpretations are also subject to our general terms and conditions set out in our current Price Schedule.

Comments
 Drilling Contractor :
 Skyy Drilling Rig -3

Database File: massey91.db
 Dataset Pathname: pass1
 Presentation Format: gr-n-ccl
 Dataset Creation: Wed Dec 05 14:04:18 2012 by Log SCH 111116
 Charted by: Depth in Feet scaled 1.240



12-11-2012
 Perforated Intervals
 3 3/8" DP 23 Gr. T ECG
 1661.0 - 1666.0 16 Perfs
 1671.0 - 1675.0 13 Perfs