



ThruBit
A Schlumberger Company

**WAVEFORM SONIC
GAMMA RAY
MEMORY LOG**

Company ENCANA OIL & GAS (USA) INC.
Well KERR 1H-2
Field KERR
County NESS
State KANSAS

Company ENCANA OIL & GAS (USA) INC.
Well KERR 1H-2
Field KERR
County NESS
State KANSAS

Location: API #: 15-135-254490000
SHL: 249' FSL & 1989' FEL
PBHL: 330' FNL & 2275' FEL
SEC 1 TWP 20S RGE 25W
Permanent Datum G.L. Elevation 2358'
Log Measured From K.B. 14.1' ABOVE PERM DATUM
Drilling Measured From K.B.
Other Services
SONIC
Elevation
K.B. 2372.1'
D.F. 2372.1'
G.L. 2358'

Date	19 SEPTEMBER 2012
Run Number	ONE
Depth Driller	8806'
Depth Logger	8760'
Bottom Logged Interval	8750'
Top Log Interval	4862'
Casing Driller	7.0" @ 4864'
Casing Logger	4862'
Bit Size	6.125'
Type Fluid In Hole	WBM
Density / Viscosity	8.9 / 28
pH / Fluid Loss	10.0 / 90
Source of Sample	MUD PIT
Rm @ Meas. Temp	3.08 ohms @ 69 degf
Rmf @ Meas. Temp	2.31 ohms @ 69 degf
Rmc @ Meas. Temp	3.85 ohms @ 69 degf
Source of Rmf / Rmc	CALCULATED
Rm @ BHT	1.27 ohms @ 130 degf
Time Circulation Stopped	11:00 PM
Time Logger on Bottom	12:30 AM
Maximum Recorded Temperature	130 degf
Equipment Number	T004
Location	OKC, OK
Recorded By	DENGLER
Witnessed By	FRED SHEETS

<<< Fold Here >>>

The use of and reliance upon this recorded-data by the herein named company (and any of its affiliates, partners, representatives, agents, consultants and employees) is subject to the terms and conditions agreed upon between ThruBit LLC and the company, including: (a) Restrictions on use of the recorded-data; (b) Disclaimers and waivers of warranties and representations regarding company's use of and reliance upon the recorded-data; and (c) Customer's full and sole responsibility for any inference drawn or decision made in connection with the use of this recorded-data.

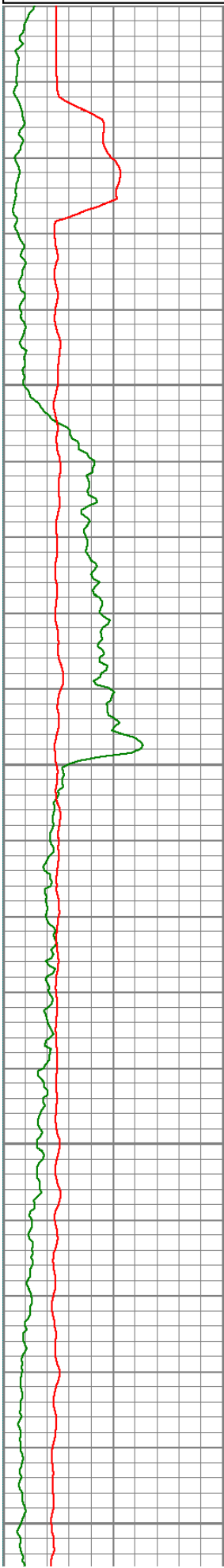
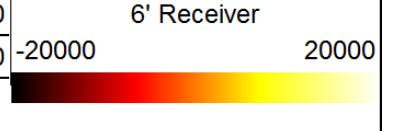
Comments

SERVICE: HORIZONTAL PUMP DOWN MEMORY BIT DEPTH: 8678' LOGGED TO: 4862'
ALL SCALES AND PRESENTATIONS PER CLIENT REQUEST
LIMESTONE MATRIX, 2.71 g/cc. USED FOR POROSITY MEASUREMENTS
TOOLSTING RAN WITH SMALL DE-CENTRALIZER, SWIVEL, KNUCKLES, SONIC CENTRALIZER AND NO STANDOFFS
TBHV REPRESENTS TOTAL BORHOLE VOLUME, ft3
ABHV REPRESENTS ANNULAR HOLE VOLUME, CALCULATED FOR 4.5" CSG., ft3
RIGMINDER USED TO ACQUIRE LOG DEPTH
LOG CORRELATED TO MWD GR
RIG: PRECISION 209
CREW: J. DENGLER, K. REED, J. JONES

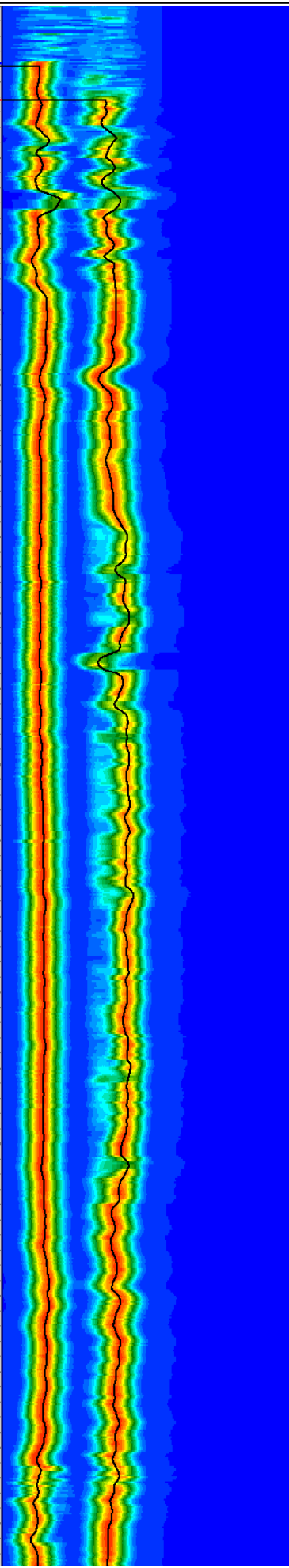
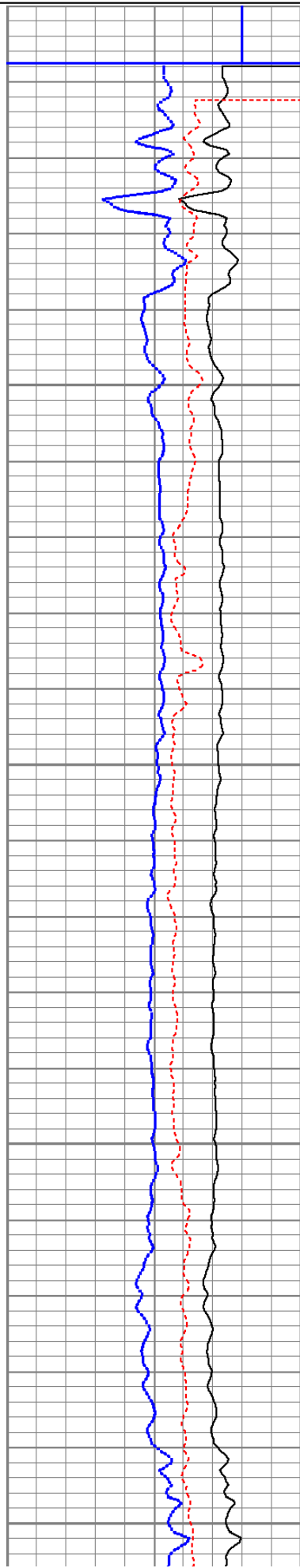
Database File:	encana_kerr_1h-2_sonic.db
Dataset Pathname:	SMNO/final
Presentation Format:	sonfst0
Dataset Creation:	Sun Sep 23 20:03:23 2012
Charted by:	Depth in Feet scaled 1:240

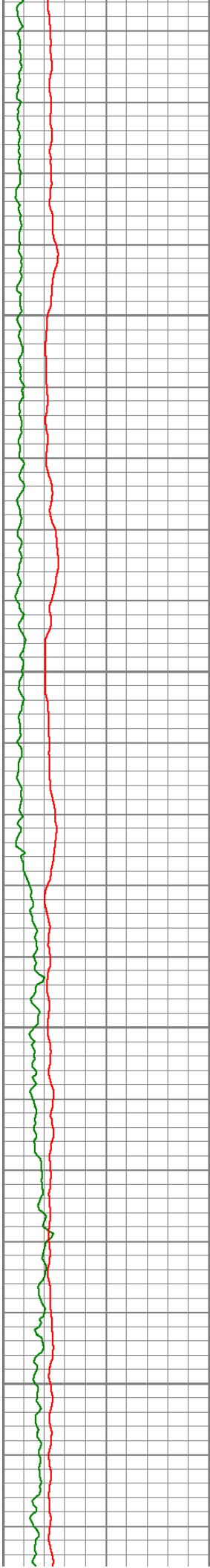
0	GR	150
4	DCAL (GAPI)	14

140	DTC (usec/ft)	40	40	DTS (usec/ft)	240
240	DTS (usec/ft)	40	40	DTC (usec/ft)	240
0.4	SPHI (pu)	-0.1			



4850
4900
4950
5000
5050



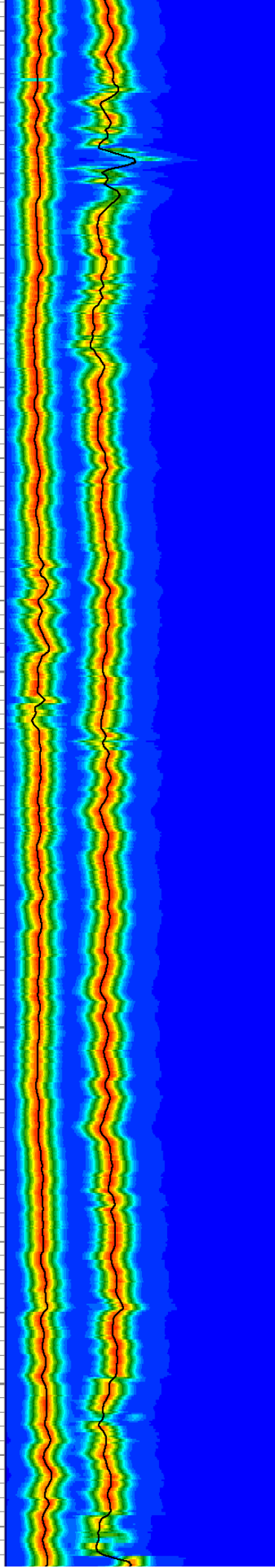
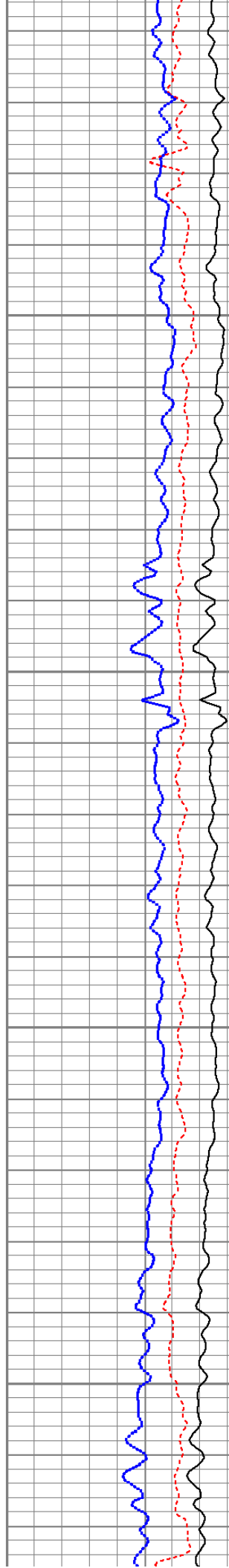


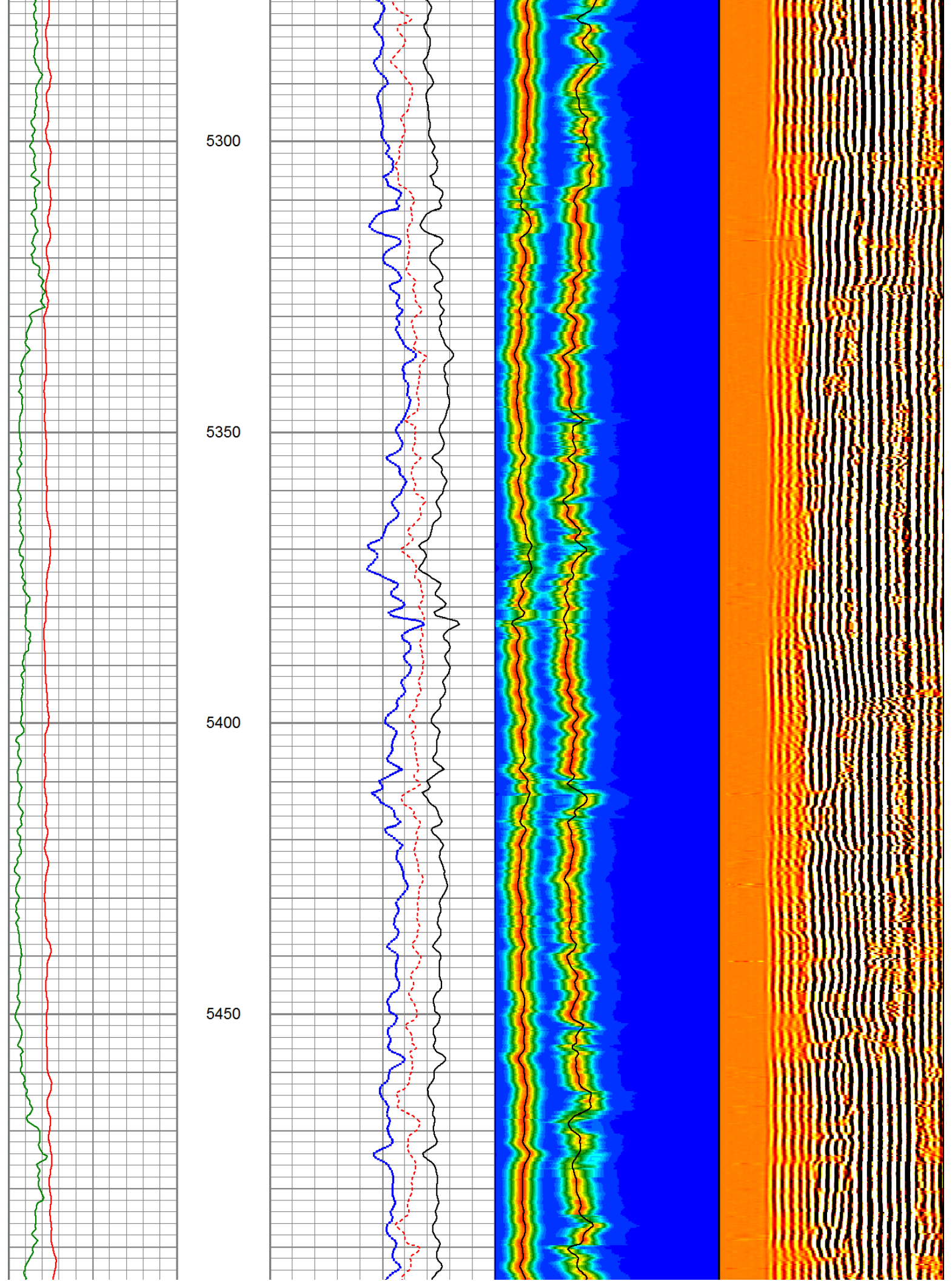
5100

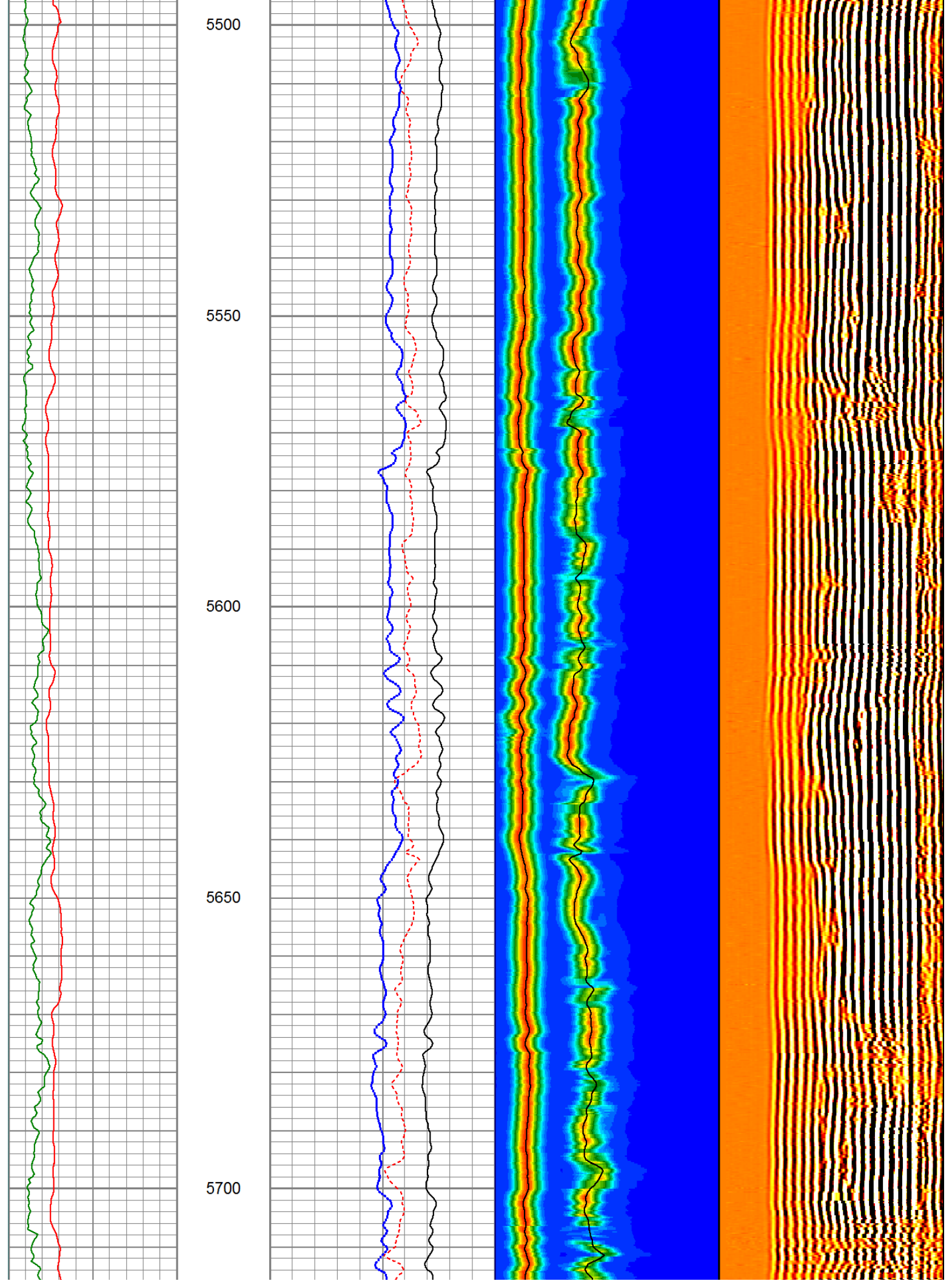
5150

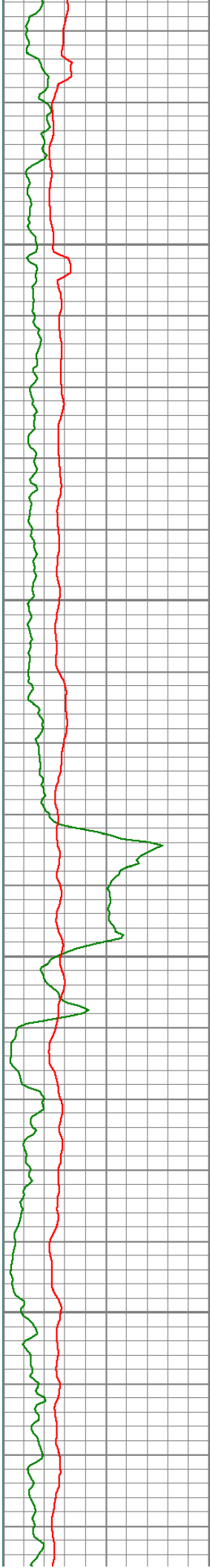
5200

5250







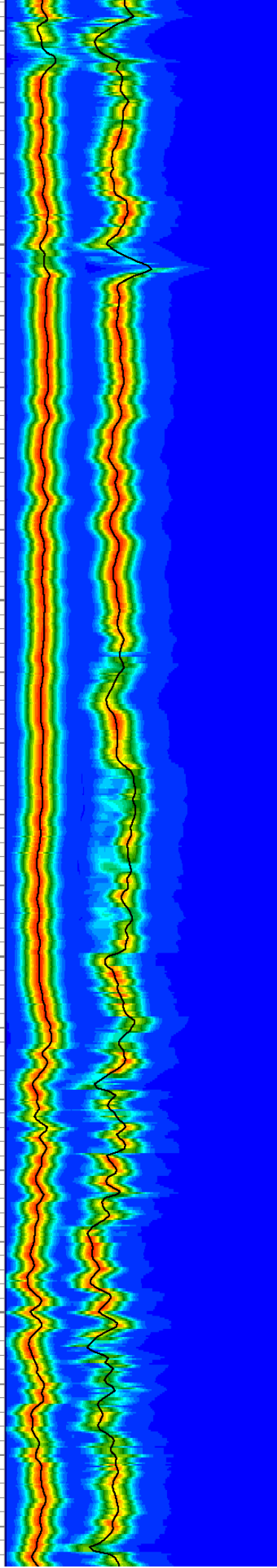
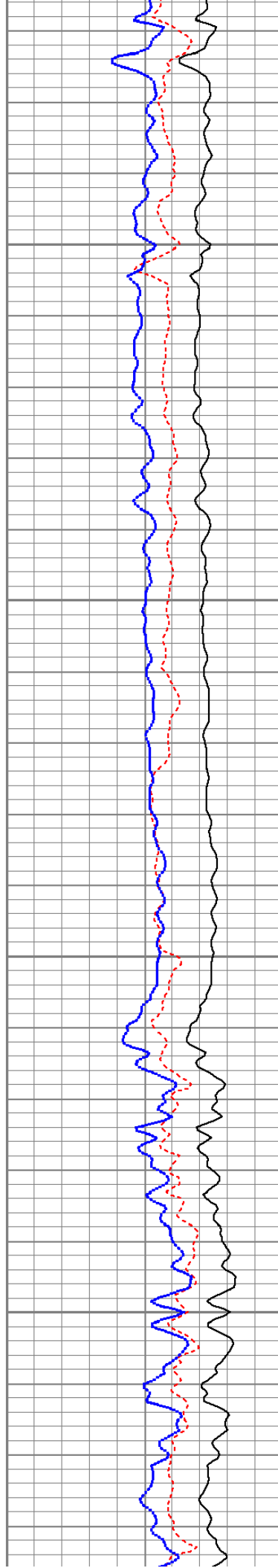


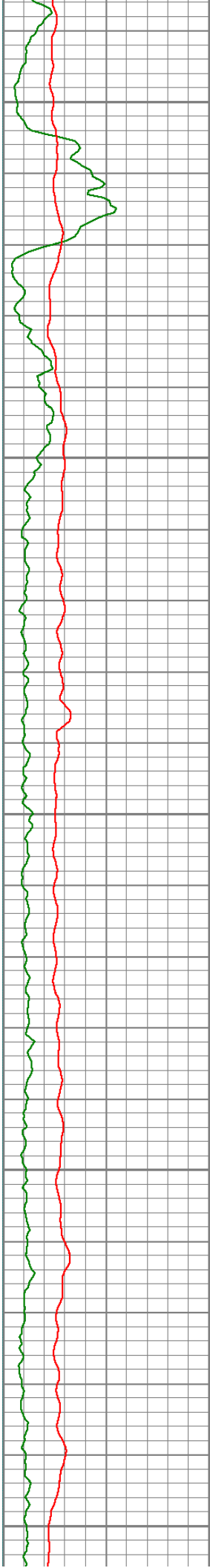
5750

5800

5850

5900





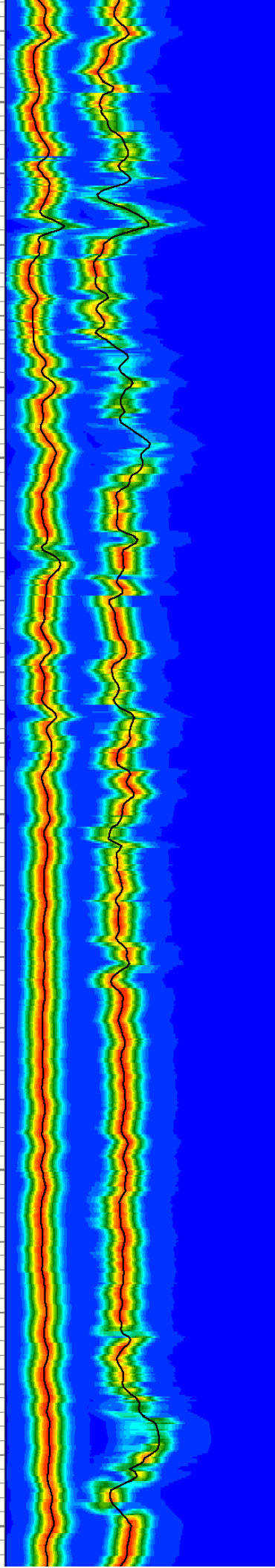
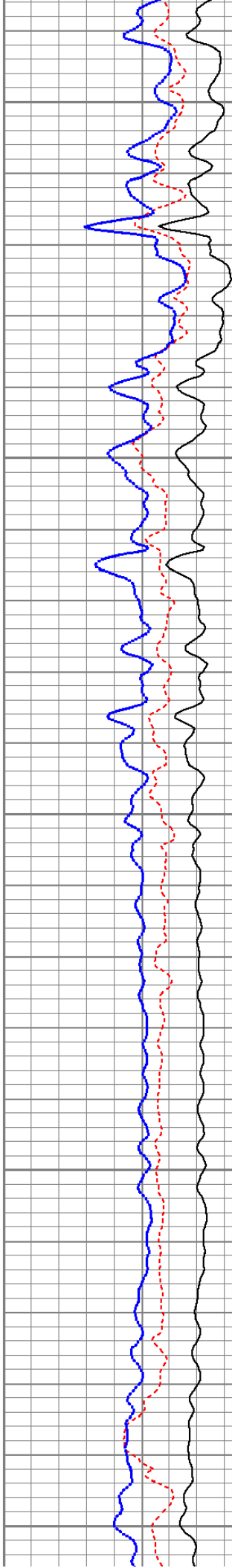
5950

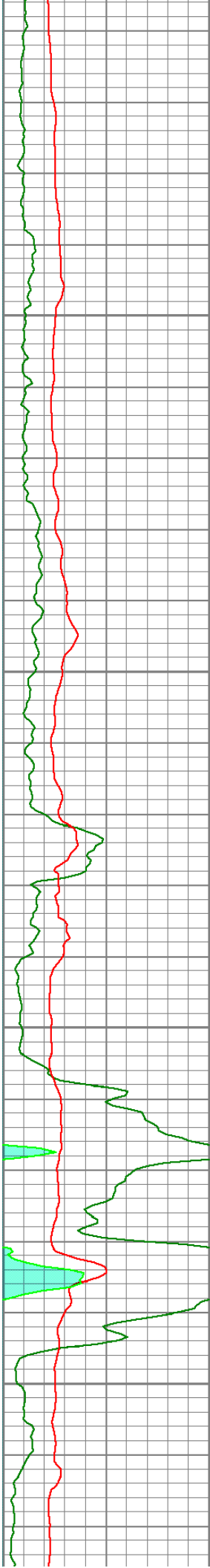
6000

6050

6100

6150



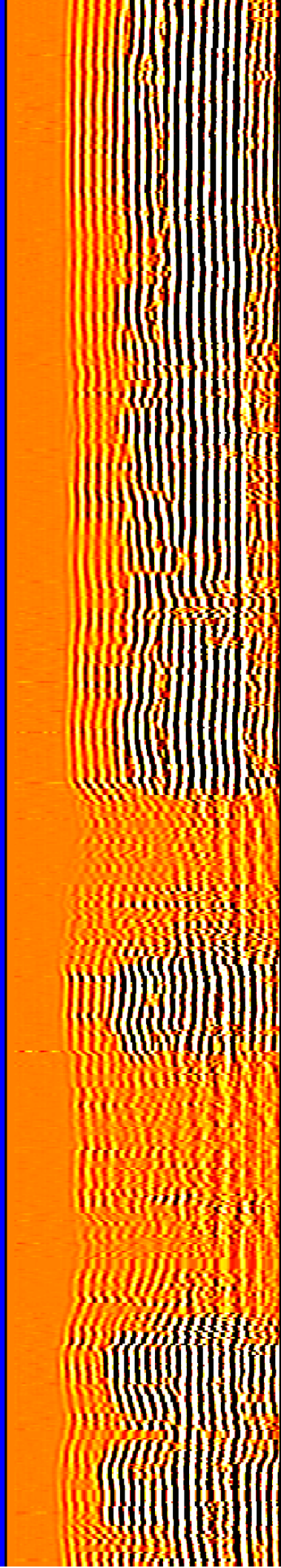
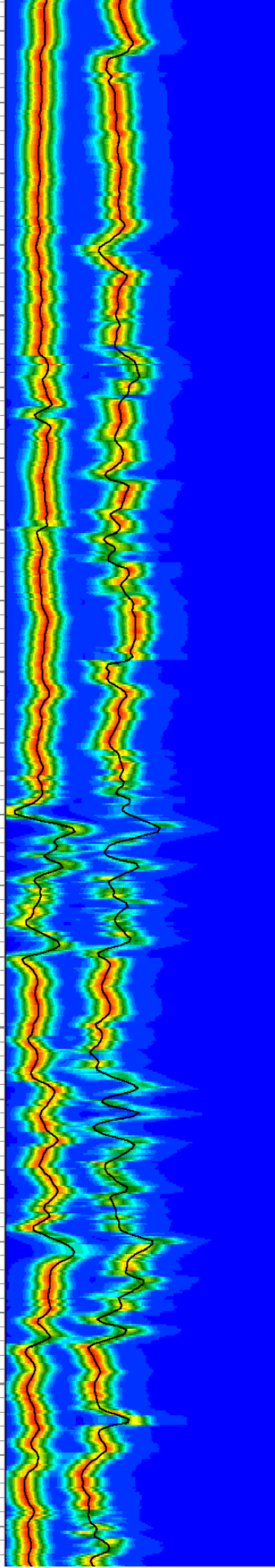
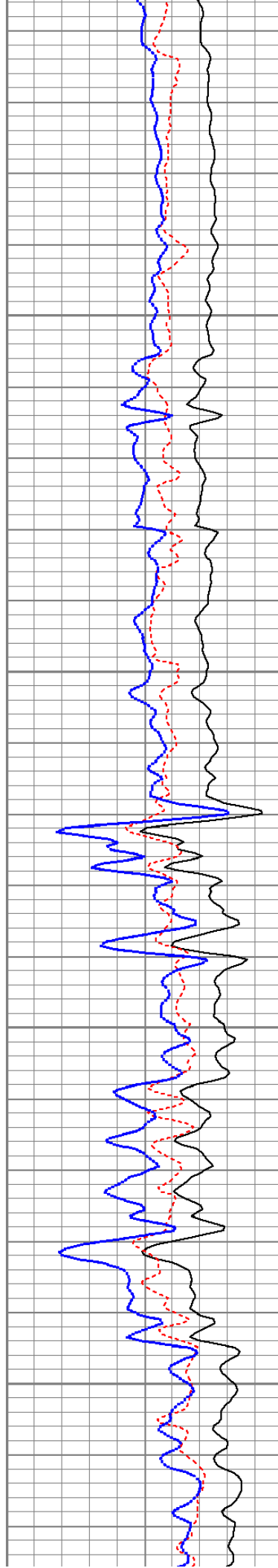


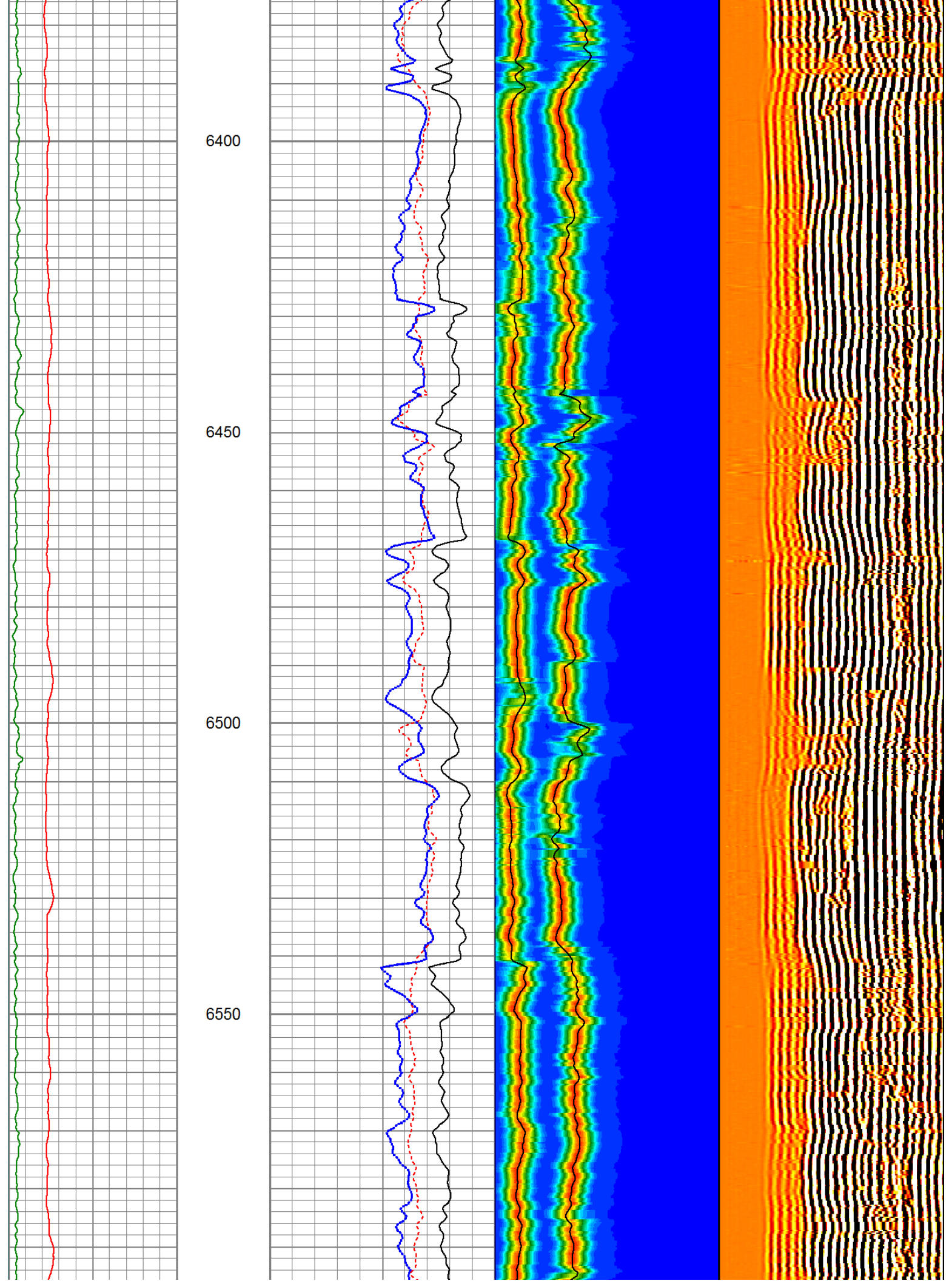
6200

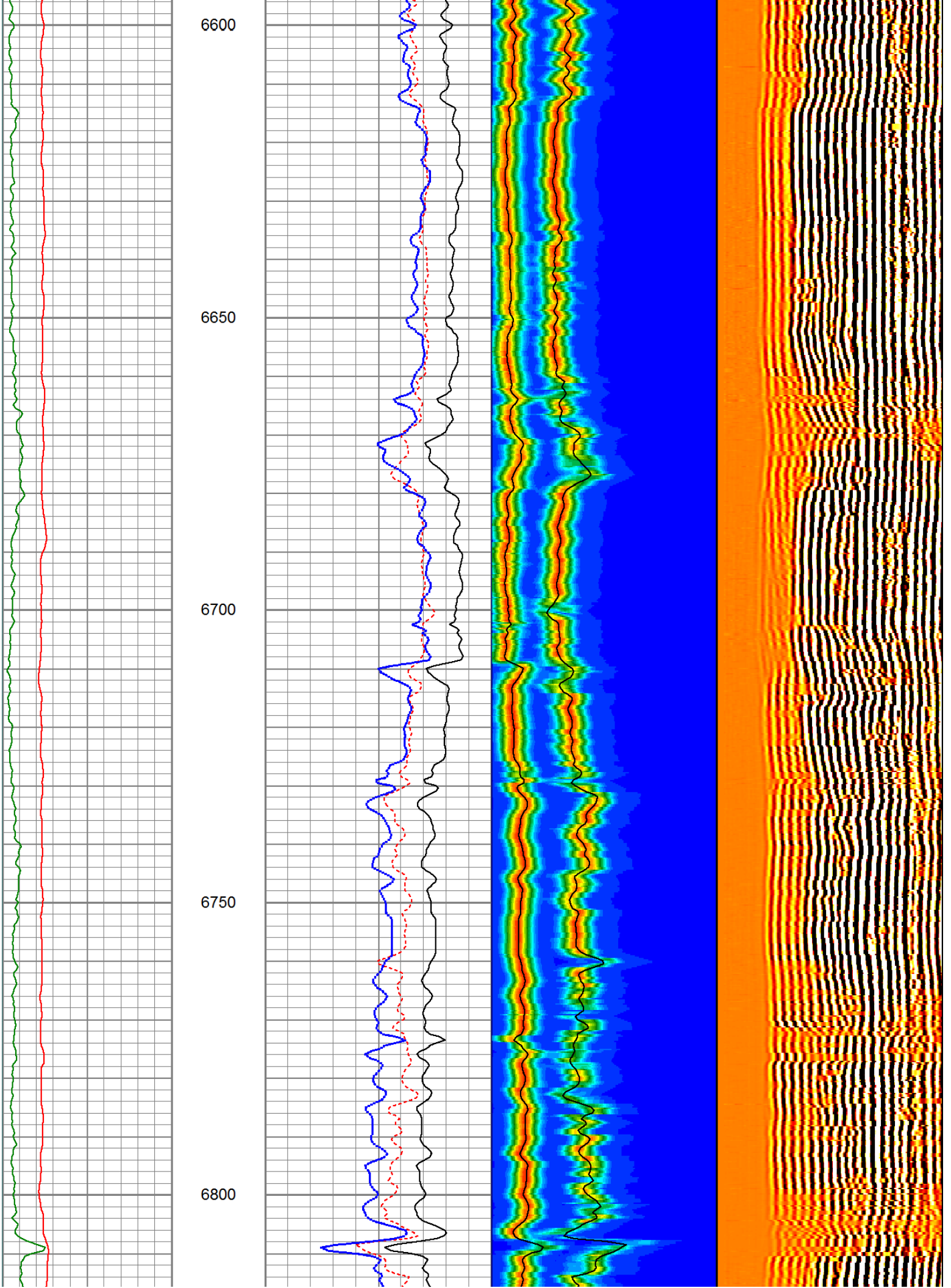
6250

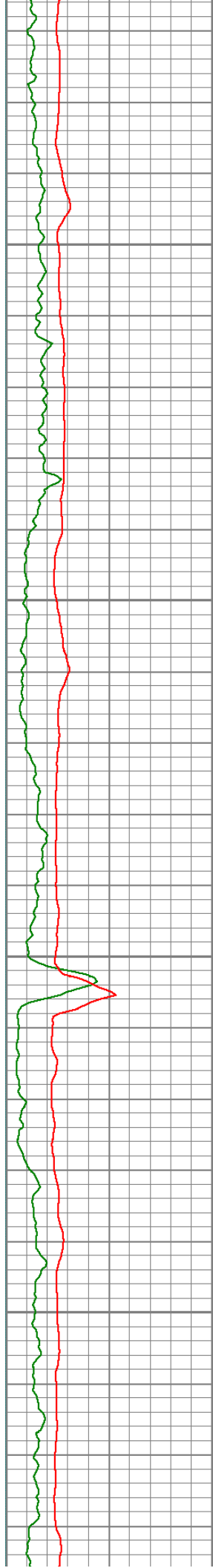
6300

6350







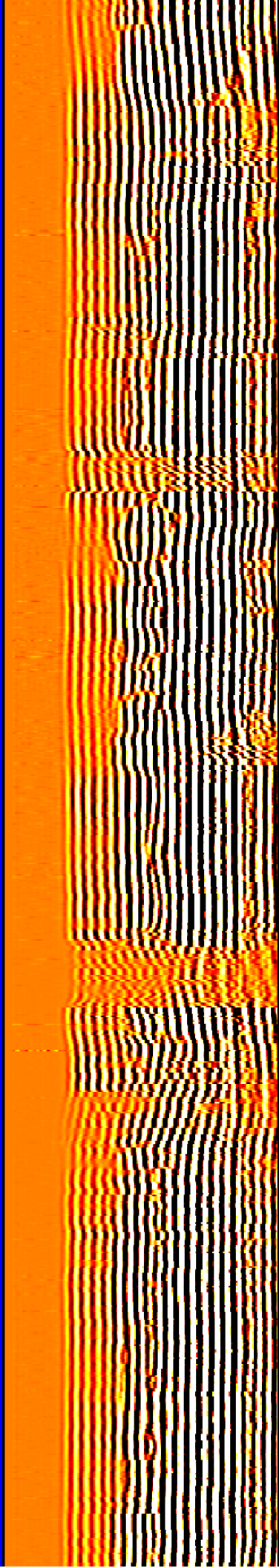
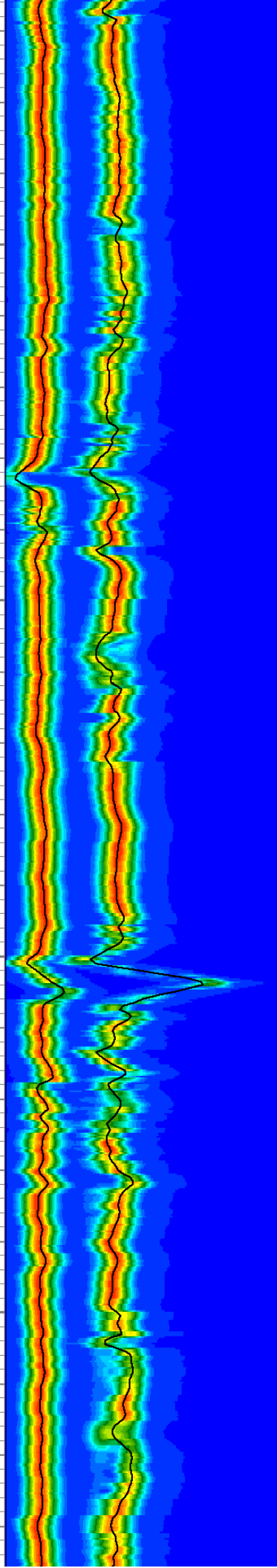
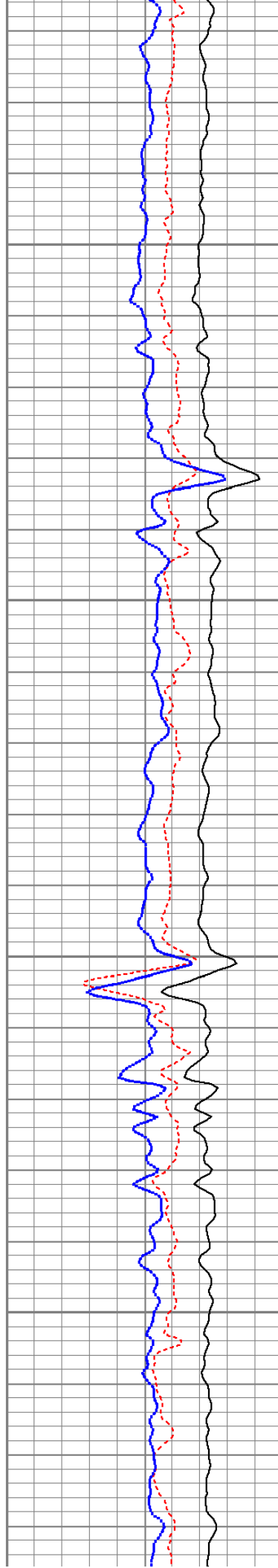


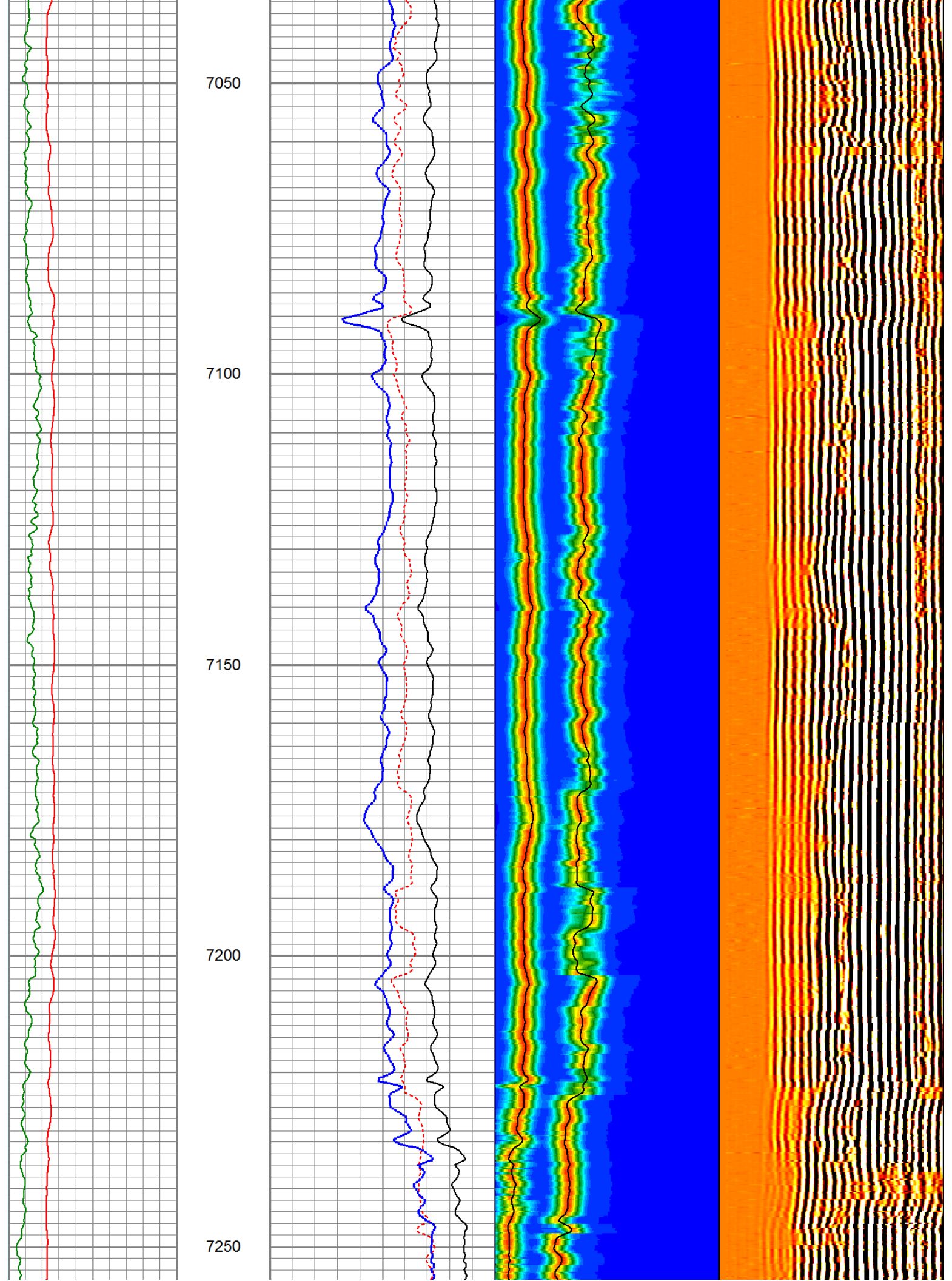
6850

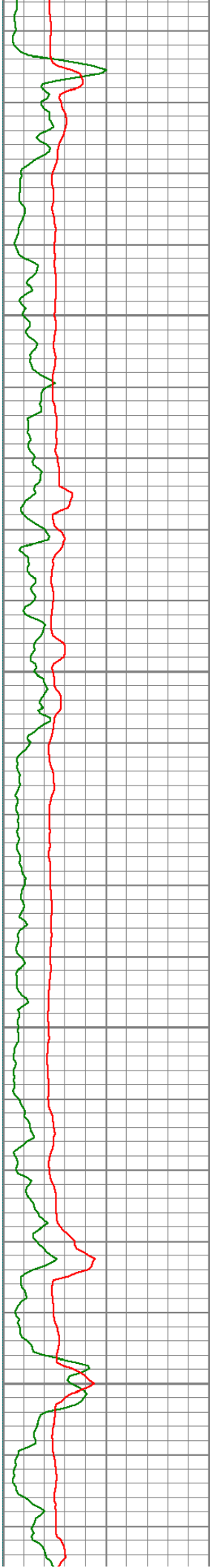
6900

6950

7000





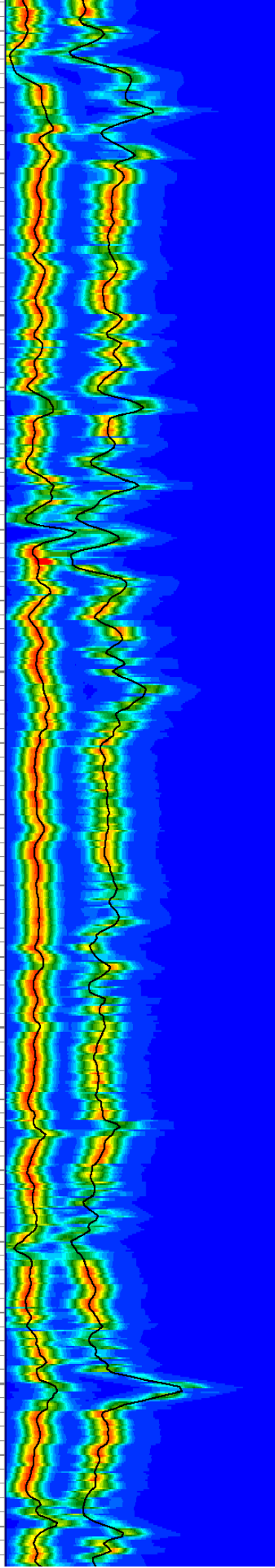
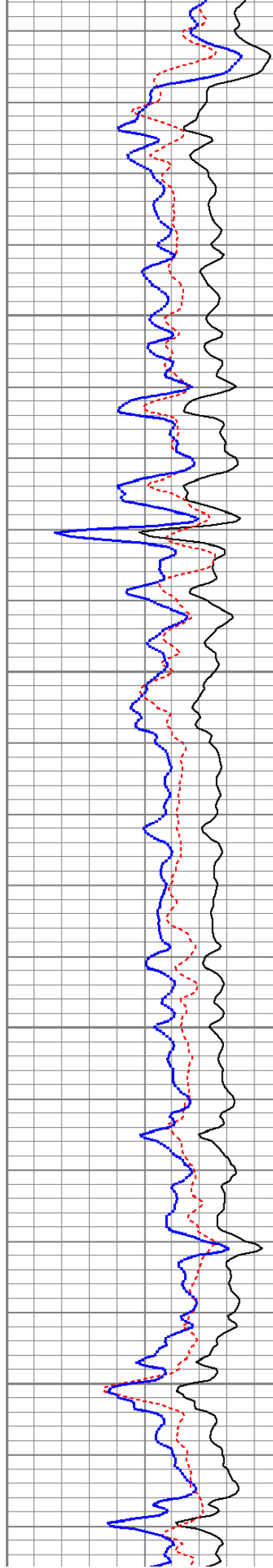


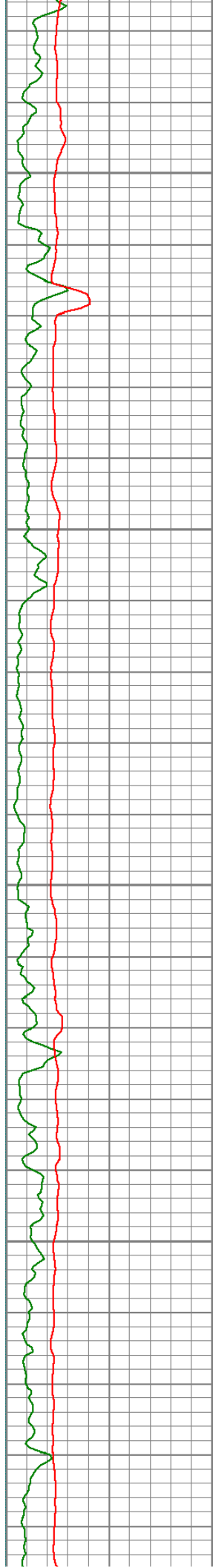
7300

7350

7400

7450



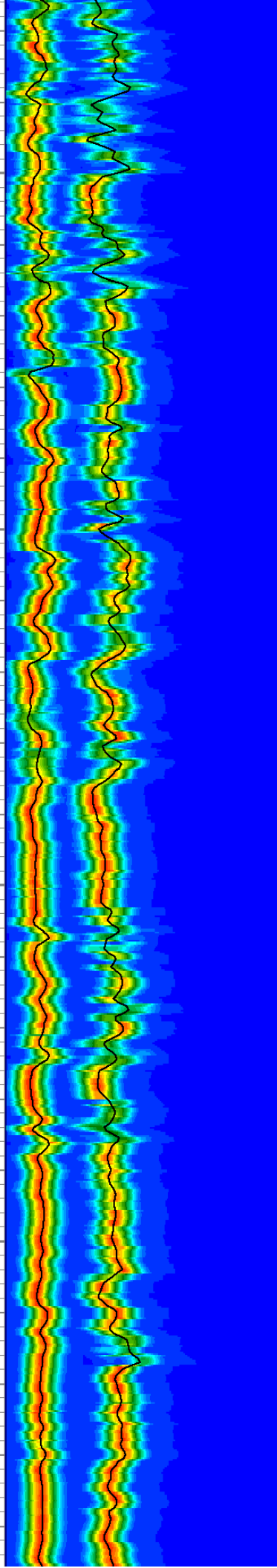
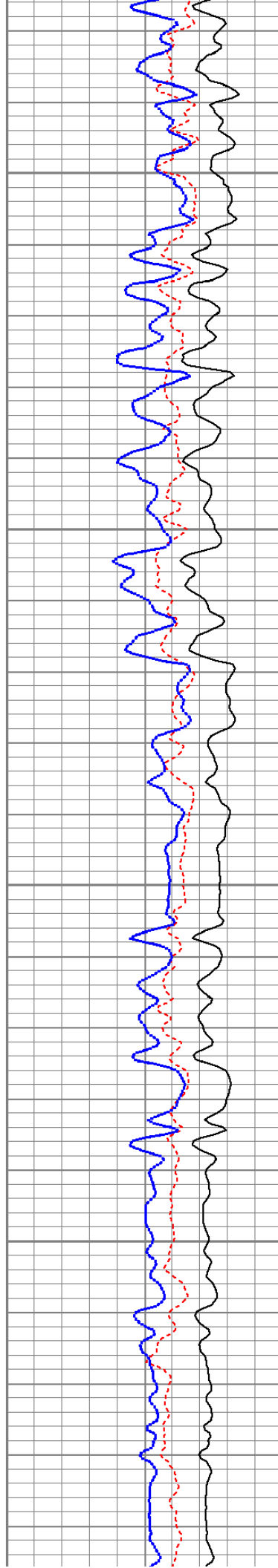


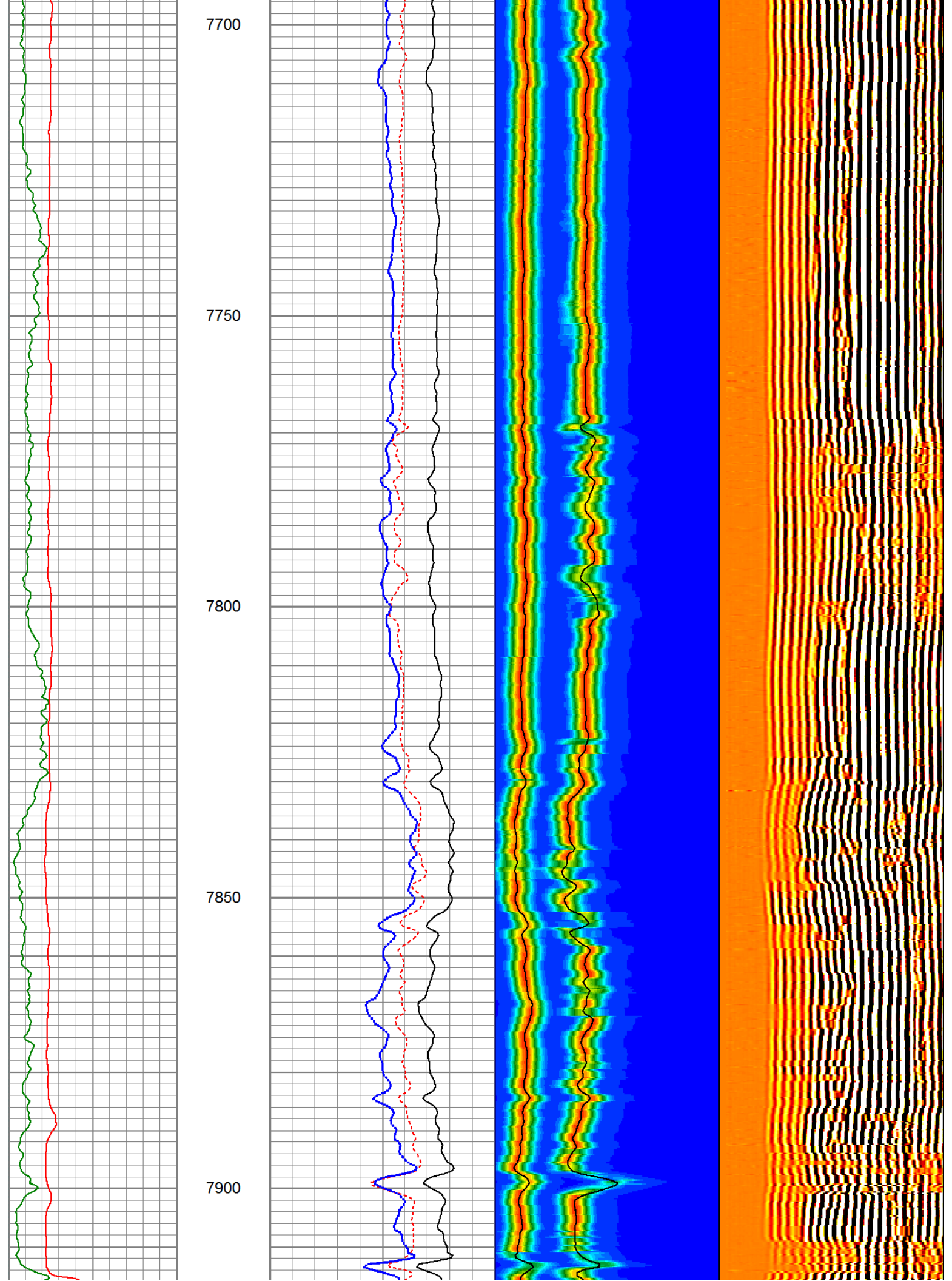
7500

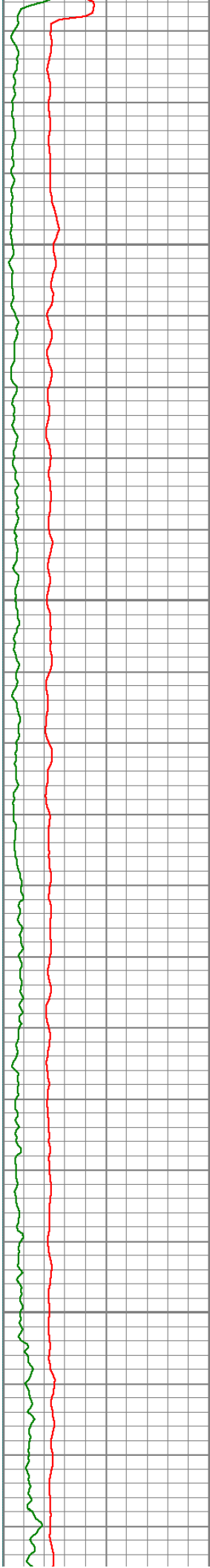
7550

7600

7650





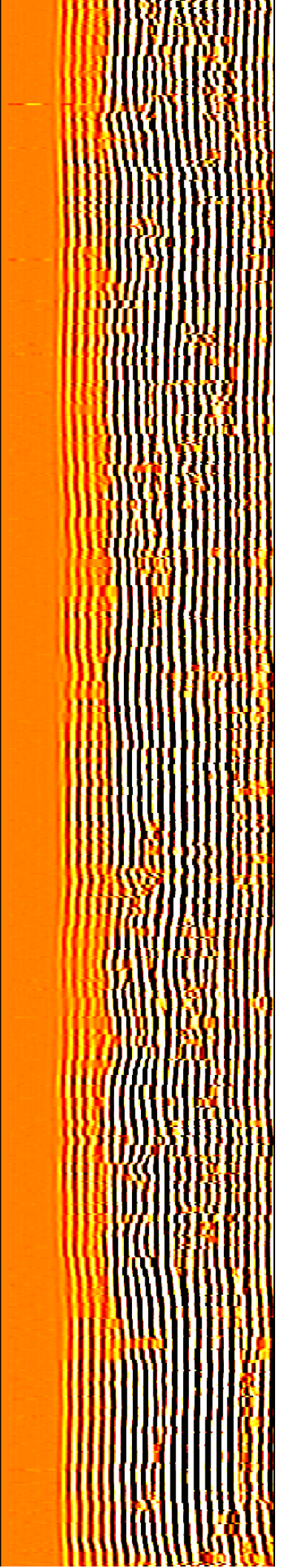
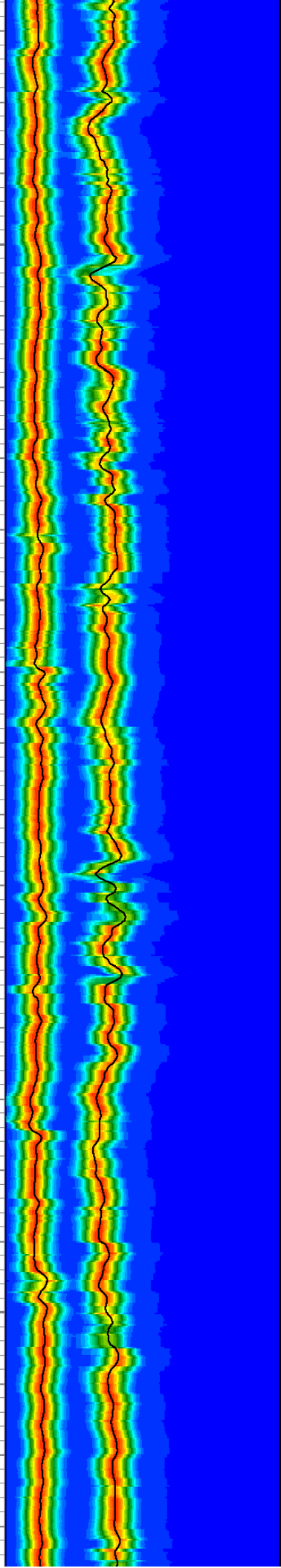
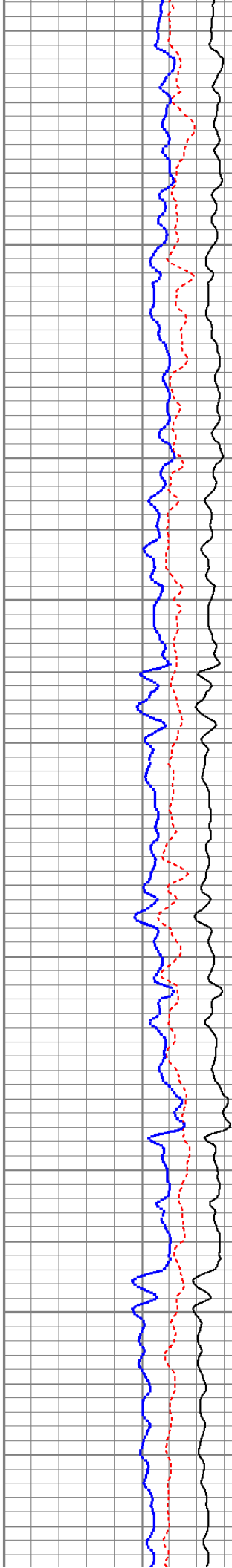


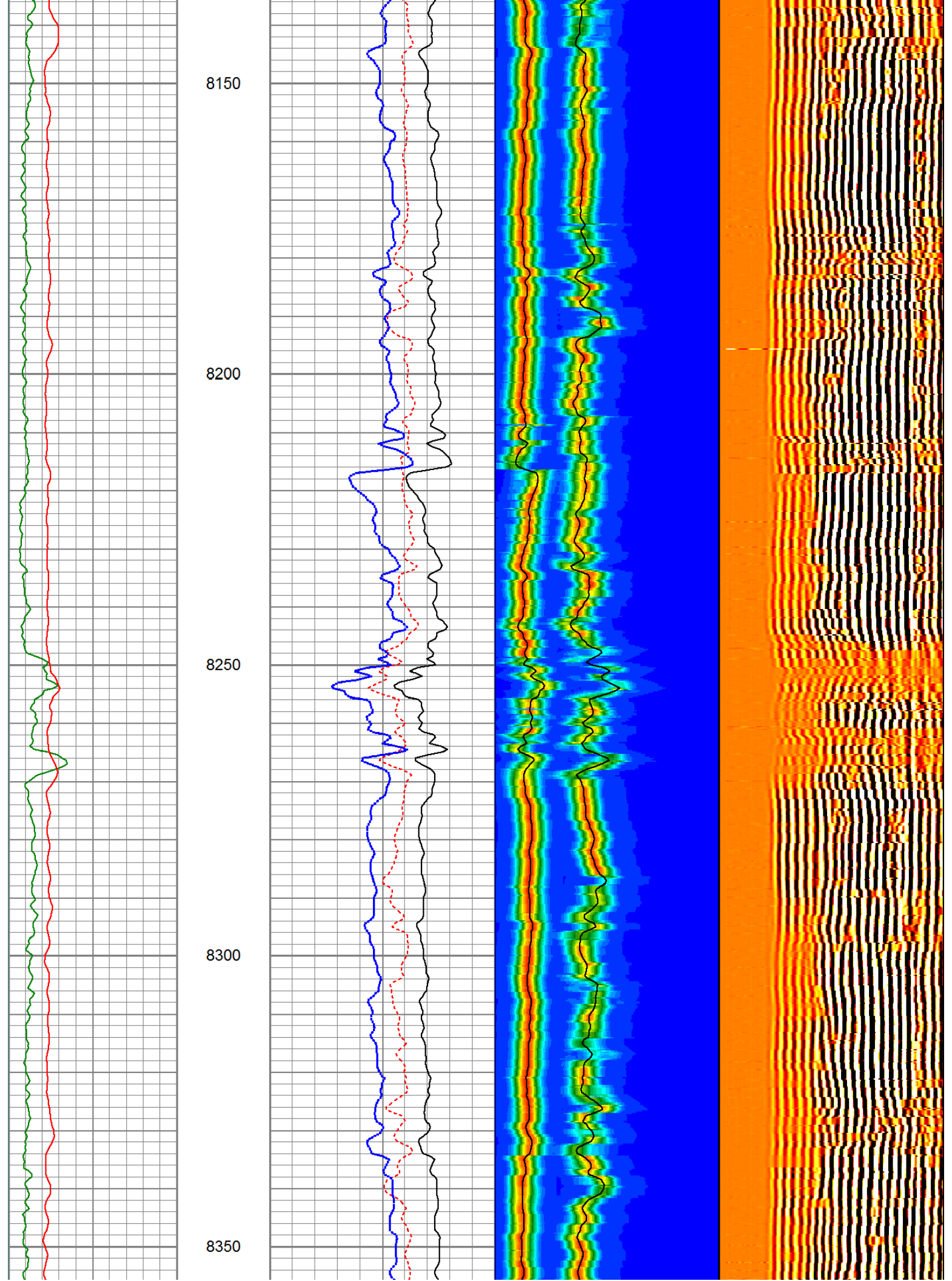
7950

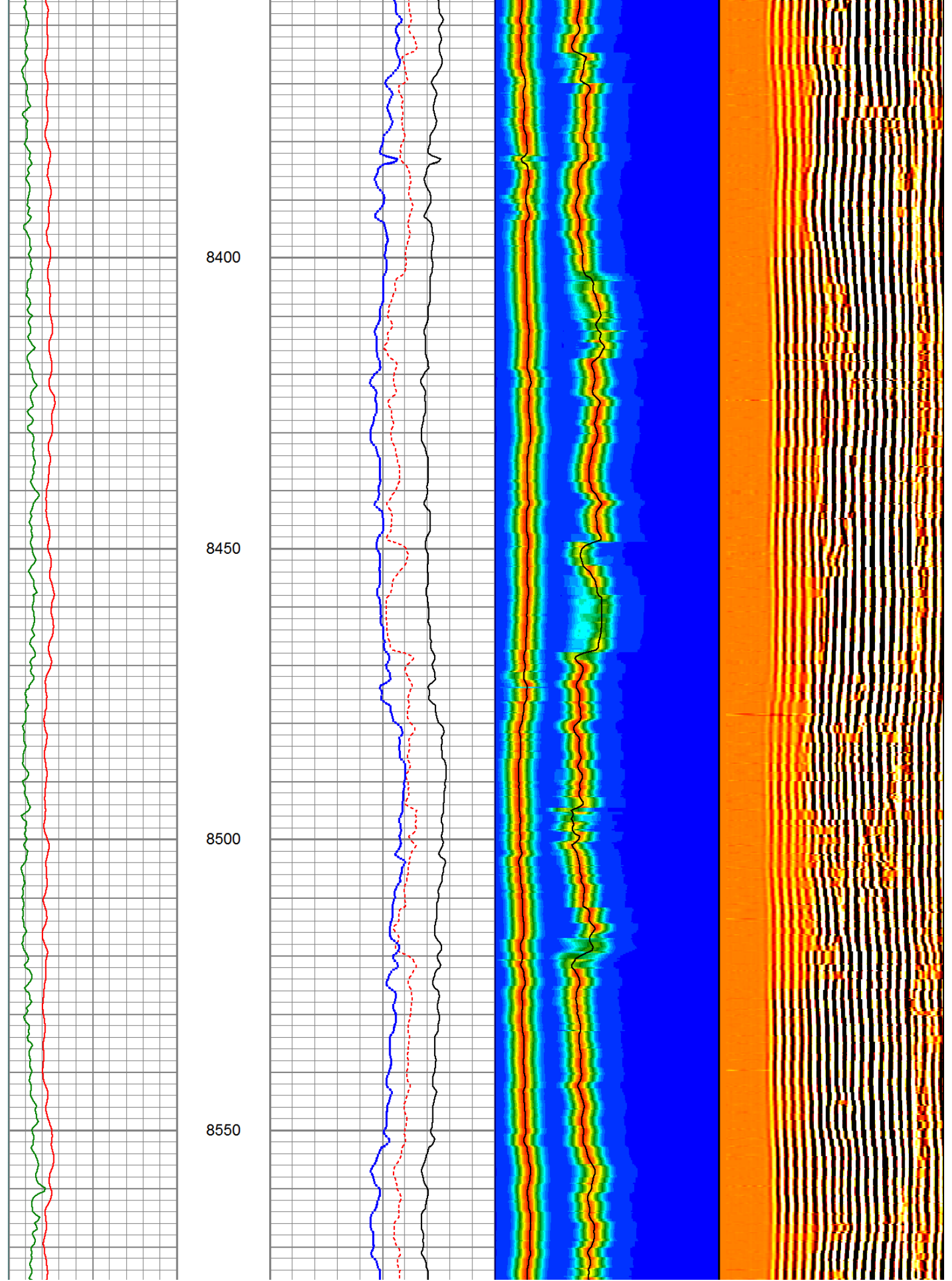
8000

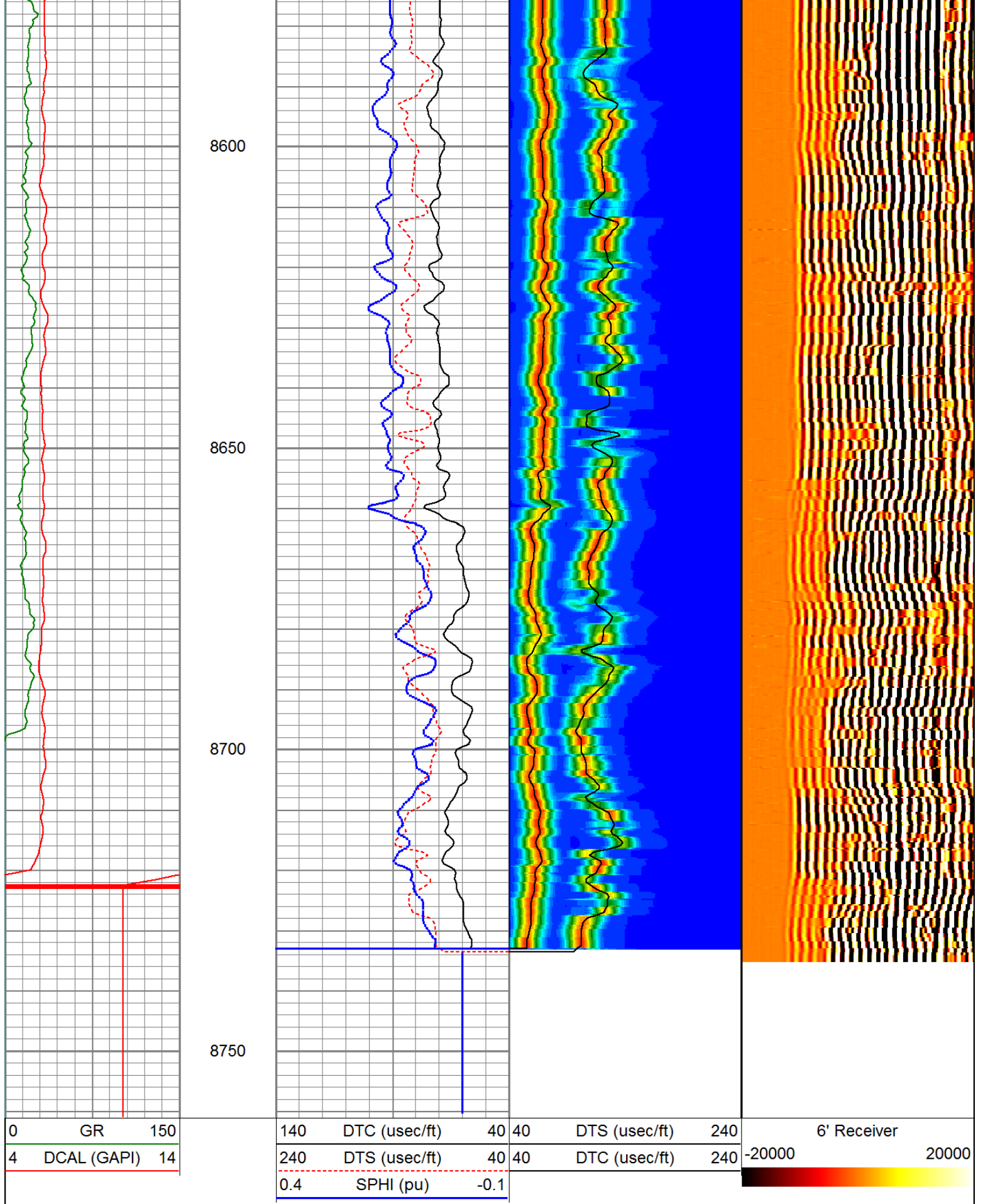
8050

8100









Company ENCANA OIL & GAS (USA) INC.

Well KERR 1H-2



MudBIL

A Schlumberger Company

Field

KERR

County

NESS

State

KANSAS