

MIDWEST SURVEYS
 LOGGING - PERFORATING - CONSULTING SERVICES
 P.O. Box 68, Osawatomie, KS 66064
 913.755.2128

GAMMA RAY / NEUTRON / CCL

File No: **Company Laymon Oil II LLC**
Well Section 35 No. 101-13

Field Vernon
County Woodson State **Kansas**

Location **3905 FSL & 3725 FEL**
NW-NW-SE-NW

Sec. 35 Type 23S Rge 16E Elevation NA
 Permian Datum GL
 Log Measured From GL
 Drilling Measured From 05-10-2013

Date Run Number One
 Depth Logger 1434.8

Bottom Logged Interval 1433.8
 Top Log Interval 200.0
 Fluid Level Full

Type Fluid Viner
 Density / Viscosity NA
 Salinity / PPM Cl NA
 Max Recorded Temp NA
 Estimated Cement Top 0.0

Equipment No. Location 107 Casawhome
 Recorded By Steve Winklich
 Witnessed By Mike Laymon

BORE-HOLE RECORD
 RUN No. BIT FROM TO SIZE CASING RECORD TO
 One 13.25" 0.0 40.0 8.625" 28.0# 0.0 43.0
 Two 6.75" 40.0 1440.0 4.50" 10.5# 0.0 1435.0

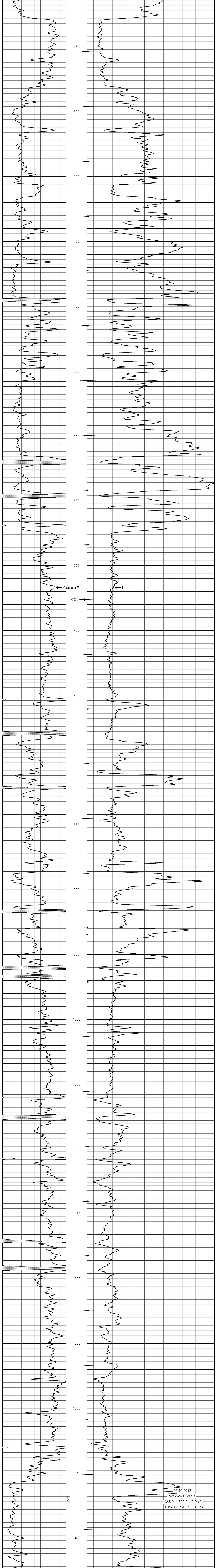
<<< Fold Here >>>

All interpretations are opinions based on inferences from electrical or other measurements and we cannot and do not guarantee the accuracy or correctness of any interpretation, and we shall not, except in the case of gross or willful negligence on our part, be liable or responsible for any loss, costs, damages, or expenses incurred or sustained by anyone resulting from any interpretation made by any of our officers, agents or employees. These interpretations are also subject to our general terms and conditions set out in our current Price Schedule.

Comments

Drilling Contractor :
Laymon Oil II LLC

Database File: section35 101-13.db
 Dataset Pathname: pass1
 Presentation Format: gr-n-ccl
 Dataset Creation: Mon Jun 10 10:11:05 2013 by Log SCH 111116
 Charted by: Depth in Feet scaled 1:240



06-10-2013
 Perforated Interval
 1368.0 - 1372.0 9 Perfs
 3 3/8" DP 19 Gr. T. ECG