



MIDWEST SURVEYS
 LOGGING - PERFORATING - CONSULTING SERVICES
 P.O. Box 66, OSAWATOMIE, KS 66064
 913.755.2128

GAMMA RAY / NEUTRON / CCL

File No:

Company: **RJ Enterprises**
 Well: **Stanley No. 10-A**
 Field: **Davis - Bronson**
 County: **Allen** State: **Kansas**

Location: **2805' FSL & 3465' FEL**
SE-SW-SE-NW

Sec. **34** Twp. **23S** Rge. **21E**
 Permian Datum: **GL** Elevation: **N/A**
 Log Measured From: **GL**
 Drilling Measured From: **GL**

Date: **05-24-2013**
 Run Number: **One**
 Depth Driller: **775.8**
 Depth Logger: **774.8**
 Bottom Logged Interval: **20.0**
 Fluid Level: **Full**

Run No.	BIT	FROM	TO	SIZE	WGT.	FROM	TO
One	9.875"	0.0	20.0	7.00"	17.0 #	0.0	20.0
Two	5.625"	20.0	734.0	2.875"	6.5 #	0.0	778.2

BORE-HOLE RECORD: Jason Kent
 CASINGS RECORD: Jason Kent

Type Fluid: **Water**
 Density / Viscosity: **NA**
 Salinity - PPM Cl: **NA**
 Max Recorded Temp: **NA**
 Estimated Cement Top: **0.0**
 Equipment No.: **107** Location: **Osawatimie**
 Recorded By: **Steve Winkisch**
 Witnessed By: **Jason Kent**

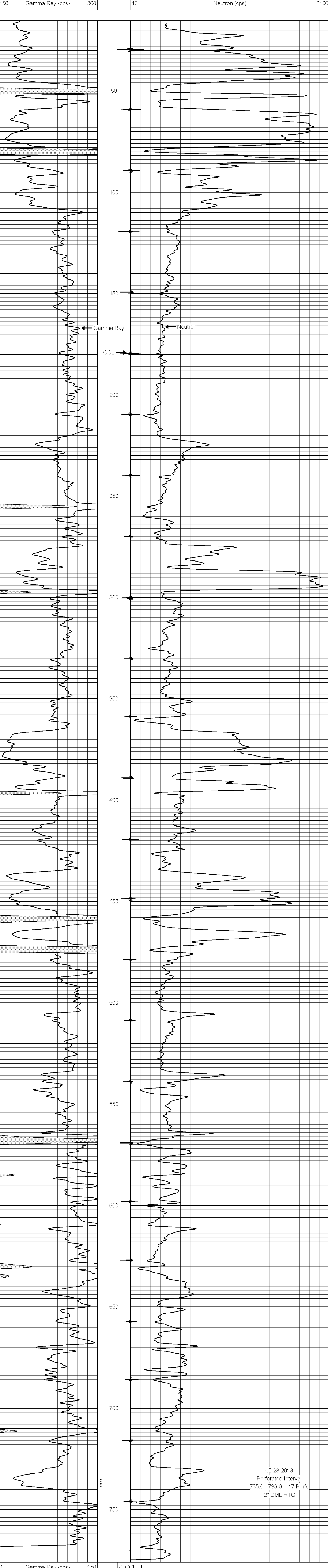
<<< Fold Here >>>

All interpretations are opinions based on inferences from electrical or other measurements and we cannot and do not guarantee the accuracy or correctness of any interpretation, and we shall not, except in the case of gross or willful negligence on our part, be liable or responsible for any loss, costs, damages, or expenses incurred or sustained by anyone resulting from any interpretation made by any of our officers, agents or employees. These interpretations are also subject to our general terms and conditions set out in our current Price Schedule.

Comments

Drilling Contractor :
RJ Enterprises

Database File: stanley10a.db
 Dataset Pathname: pass1
 Presentation Format: gr-n-ccl
 Dataset Creation: Fri May 24 13:22:48 2013 by Log SCH 111116
 Charted by: Depth in Feet scaled 1:240



05-28-2013
 Perforated Interval
 735.0 - 739.0 17 Perfs
 2" DML RTG

0 Gamma Ray (cps) 150
 150 Gamma Ray (cps) 300
 -1 CCL 1
 10 Neutron (cps) 2100