



**MIDWEST SURVEYS**  
 LOGGING - PERFORATING - CONSULTING SERVICES  
 P.O. Box 68, OSAWATOMIE, KS 66064  
 913.755.2128

**GAMMA RAY / NEUTRON / CCL**

File No. \_\_\_\_\_

Company **RJ Enterprises**  
 Well **Rife No. 11-A**  
 Field **Davis - Bronson**  
 County **Allen** State **Kansas**

Location **495' FSL & 4785' FEL**  
**NE-SW-SW-SW**

Sec 27 Typ 23s Rge 21e  
 Permit Datum GL Elevation N/A  
 Log Measured From GL  
 Drilling Measured From GL

Date \_\_\_\_\_  
 Run Number **05-24-2013**  
 Depth Driller **820.0**  
 Depth Logger **777.7**  
 Bottom Logged Interval **776.7**  
 Top Log Interval **20.0**  
 Fluid Level **Full**

BORE-HOLE RECORD				CASINGS RECORD			
RUN	BIT	FROM	TO	SIZE	WGT.	FROM	TO
No.	9.875"	0.0	20.0	7.00"	17.0 #	0.0	20.0
Two	5.625"	20.0	820.0	2.875"	6.5 #	0.0	780.3

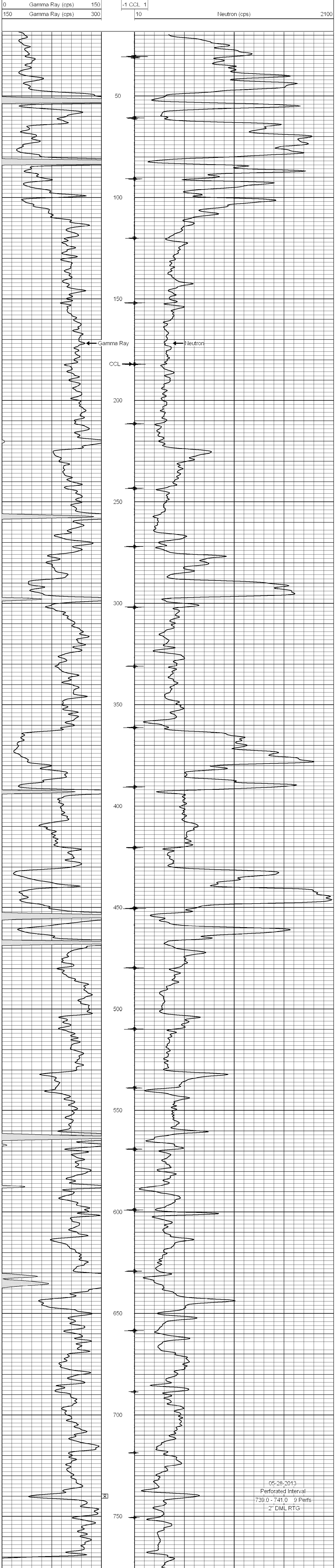
<< Fold Here >>

All interpretations are opinions based on inferences from electrical or other measurements and we cannot and do not guarantee the accuracy or correctness of any interpretation, and we shall not, except in the case of gross or willful negligence on our part, be liable or responsible for any loss, costs, damages, or expenses incurred or sustained by anyone resulting from any interpretation made by any of our officers, agents or employees. These interpretations are also subject to our general terms and conditions set out in our current Price Schedule.

**Comments**

Drilling Contractor :  
**RJ Enterprises**

Database File: rife11a.db  
 Dataset Pathname: pass1  
 Presentation Format: gr-n-ccl  
 Dataset Creation: Fri May 24 12:41:47 2013 by Log SCH 111116  
 Charted by: Depth in Feet scaled 1:240



05-28-2013  
 Perforated Interval  
 739.0 - 741.0 9 Perfs  
 2" DML RTG

