



**CEMENT BOND LOG**

GREAT BEND, KANSAS

Company **LASSO ENERGY, LLC.**  
 Well **NICHEPOR #1-32H**  
 Field  
 County **NESS**  
 State **KANSAS**

Company **LASSO ENERGY, LLC.**  
 Well **NICHEPOR #1-32H**  
 Field  
 County **NESS** State **KANSAS**

Location **200' FSL & 660' FEL**  
 SEC. **32** TWP. **17S** RGE. **23W**  
 Permanent Datum **GROUND LEVEL** Elevation **2344**  
 Log Measured From **KELLY BUSHING 23' AGL**  
 Drilling Measured From **KELLY BUSHING**  
 Other Services  
 Elevation  
 K.B. 2367  
 D.F.  
 G.L. 2344

Date	05-20-2014		
Run Number	ONE		
Depth Driller			
Depth Logger	4601		
Bottom Logged Interval	4600		
Top Log Interval	1400		
Open Hole Size	WATER/OIL		
Type Fluid			
Density / Viscosity			
Max. Recorded Temp.			
Estimated Cement Top	1600		
Time Well Ready			
Time Logger on Bottom			
Equipment Number	52		
Location	GREATB BEND		
Recorded By	LEE BRETZ		
Witnessed By	MR. MATT BURTON		
Borehole Record		Tubing Record	
Run Number	Bit	From	To
Casing Record	Size	Wgt/Ft	Top Bottom
Surface String	9 5/8"	0	890
Prot. String	7"	0	4930
Production String	4"	4662	8926
Liner			

<<< Fold Here >>>

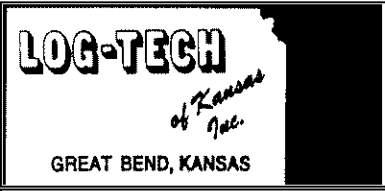
All interpretations are opinions based on inferences from electrical or other measurements and we cannot and do not guarantee the accuracy or correctness of any interpretation, and we shall not, except in the case of gross or willful negligence on our part, be liable or responsible for any loss, costs, damages, or expenses incurred or sustained by anyone resulting from any interpretation made by any of our officers, agents or employees. These interpretations are also subject to our general terms and conditions set out in our current Price Schedule.

**Comments**

**THANK YOU FOR USING LOG TECH OF KANSAS!**  
**(620)792-2167**

**DIRECTIONS**  
**NESS CITY, KS**  
**4 MILES NORTH TO RD. 170**  
**1 EAST 1 NORTH WEST INTO**

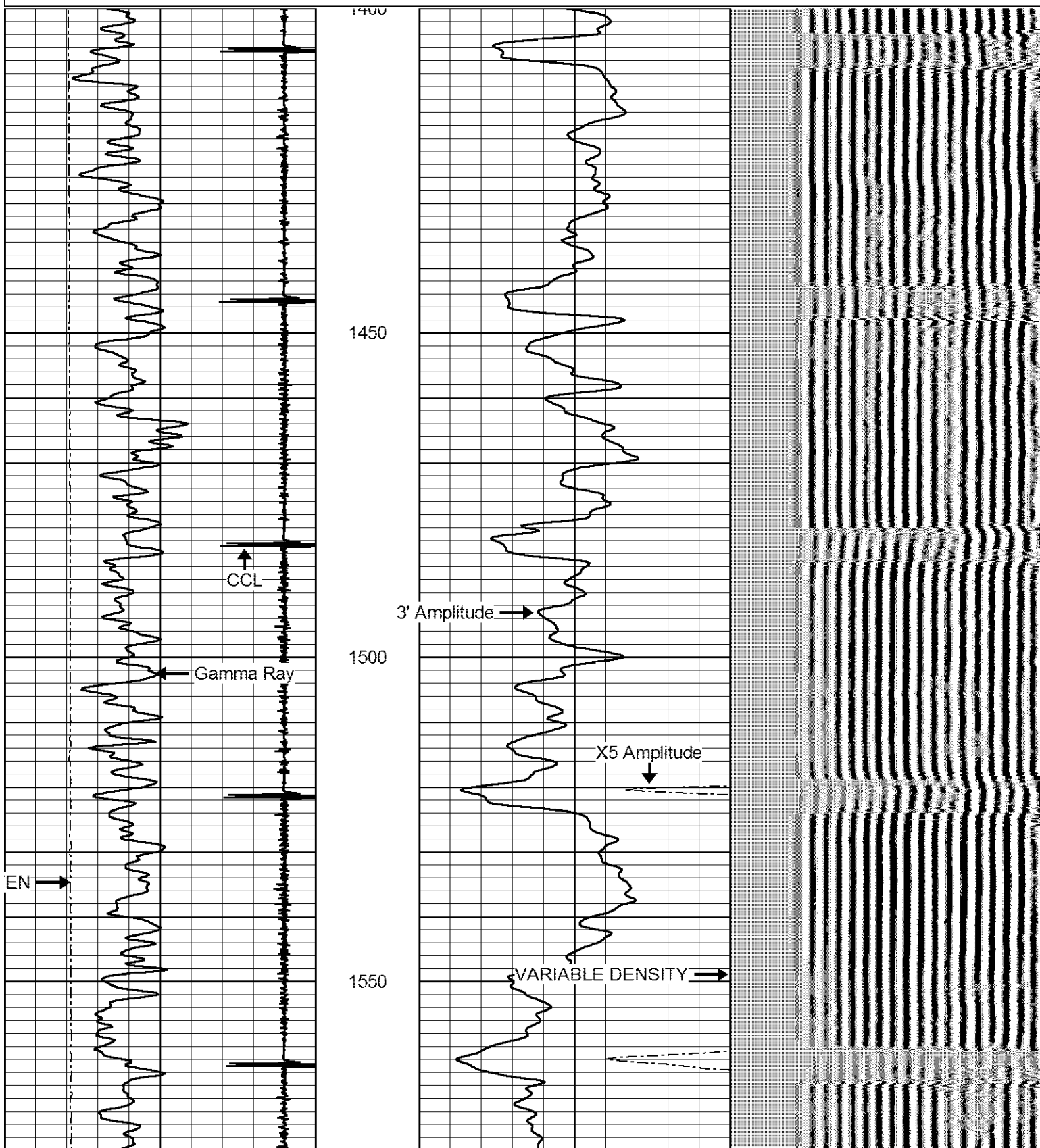
**CORRECTED -4.3' TO OPENHOLE LOG**

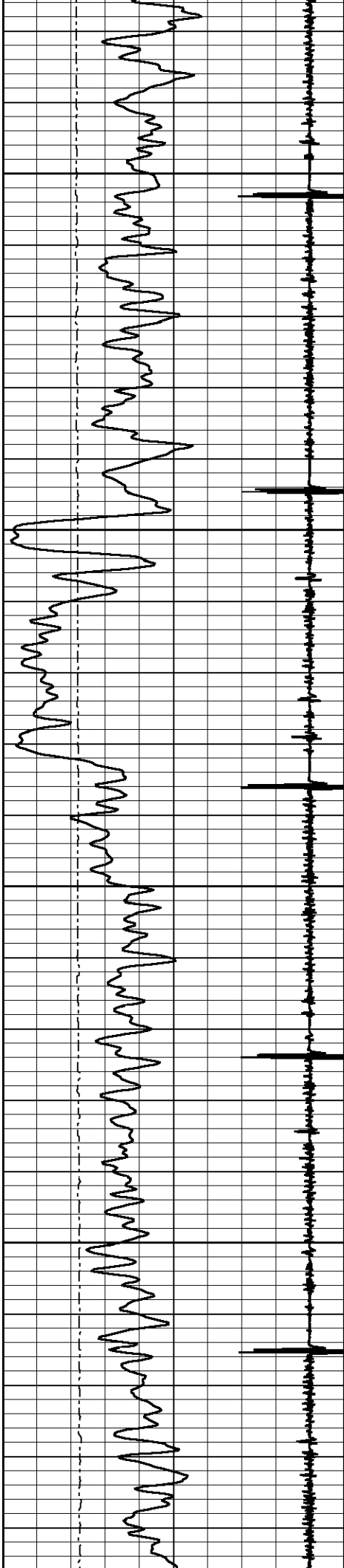


**MAIN PASS**

Database File: nichepor132h.db  
 Dataset Pathname: pass4  
 Presentation Format: cbl02  
 Dataset Creation: Tue May 20 11:00:33 2014 by Log 7.0 B1  
 Charted by: Depth in Feet scaled 1:240

9	Collar Locator	-1	0	Amplitude (mV)	100	200	VARIABLE DENSITY	1200
0	Gamma Ray (GAPI)	150	0	X5 Amplitude (mV)	20			
320	TT3 (usec)	120						
0	LTEN (lb)	2500						



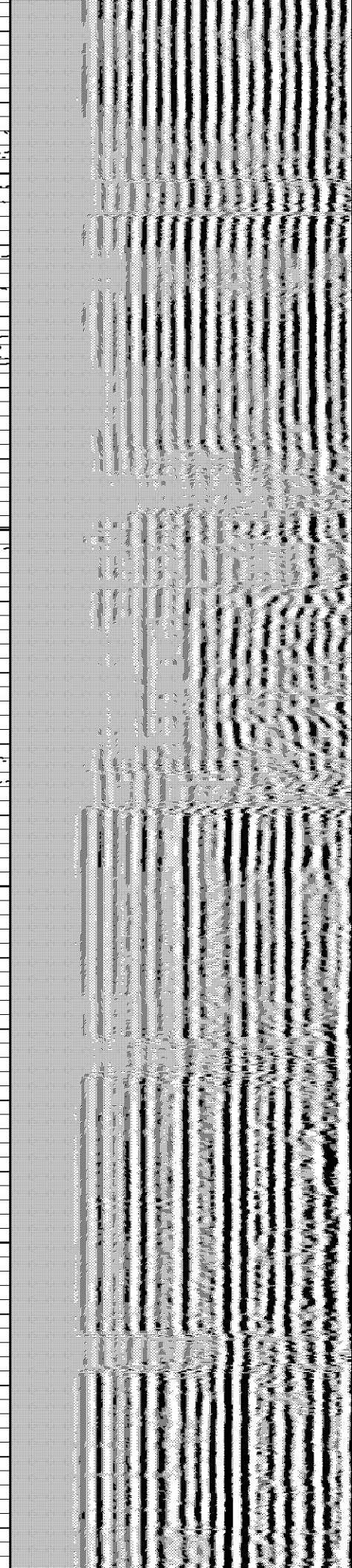
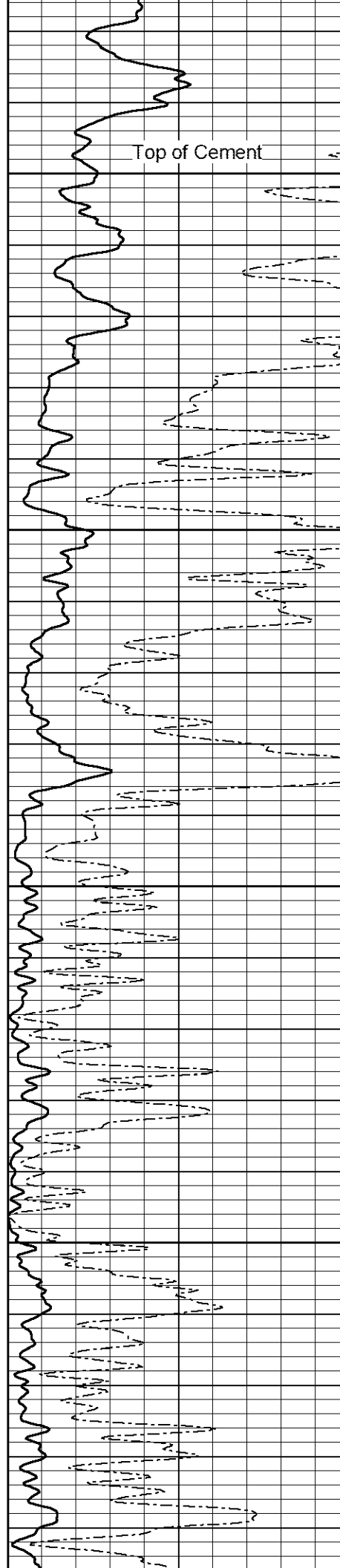


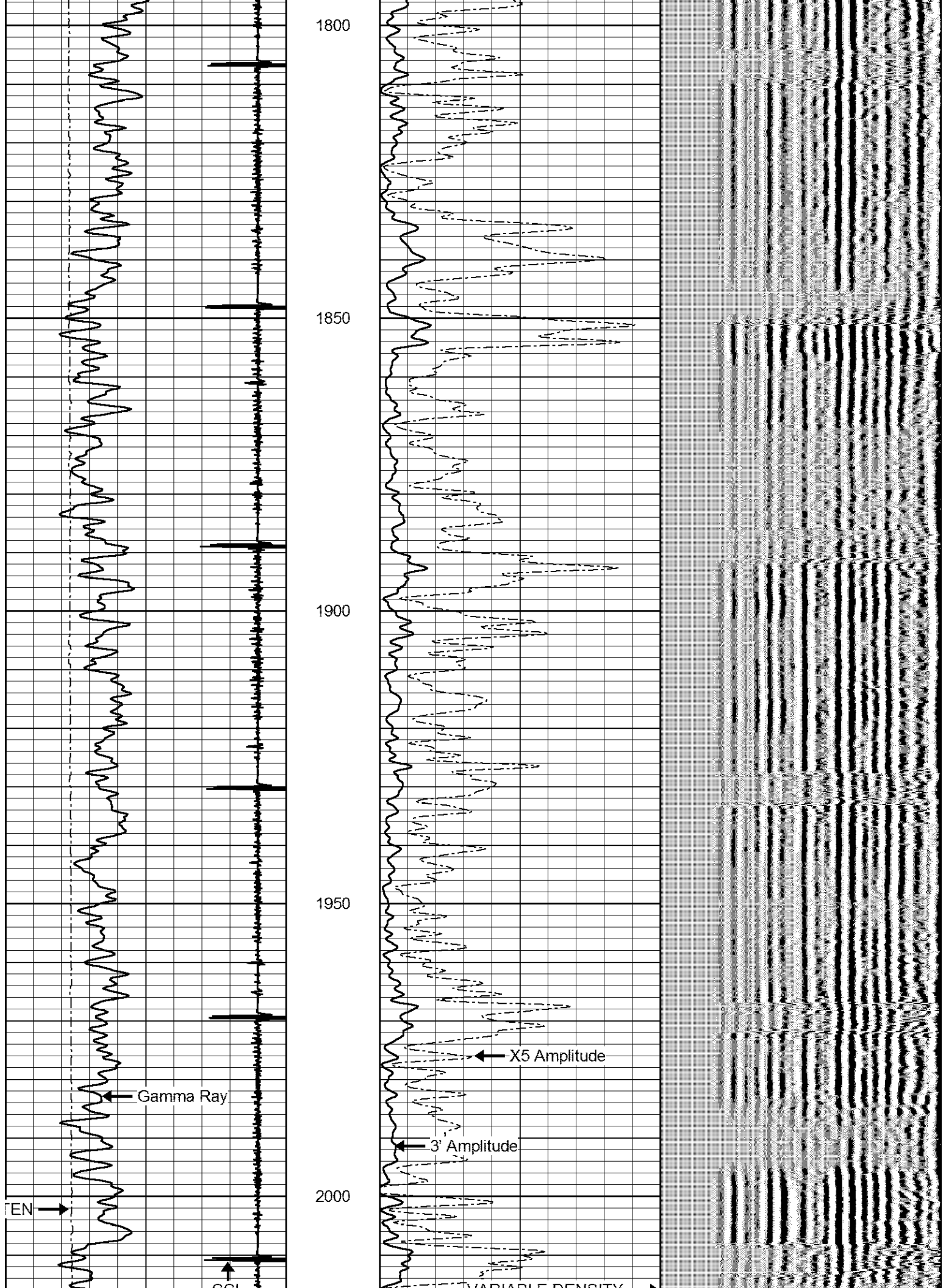
1600

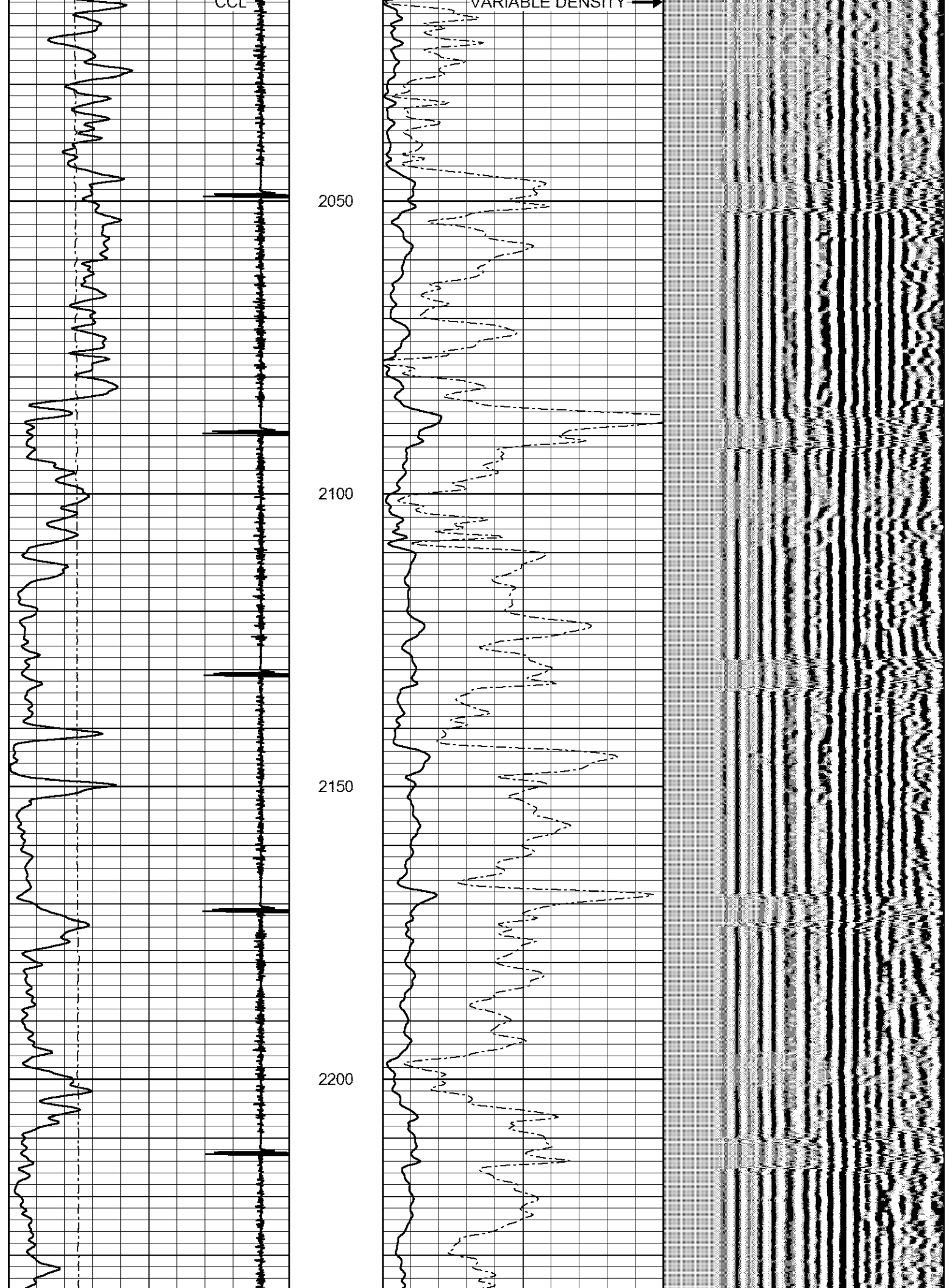
1650

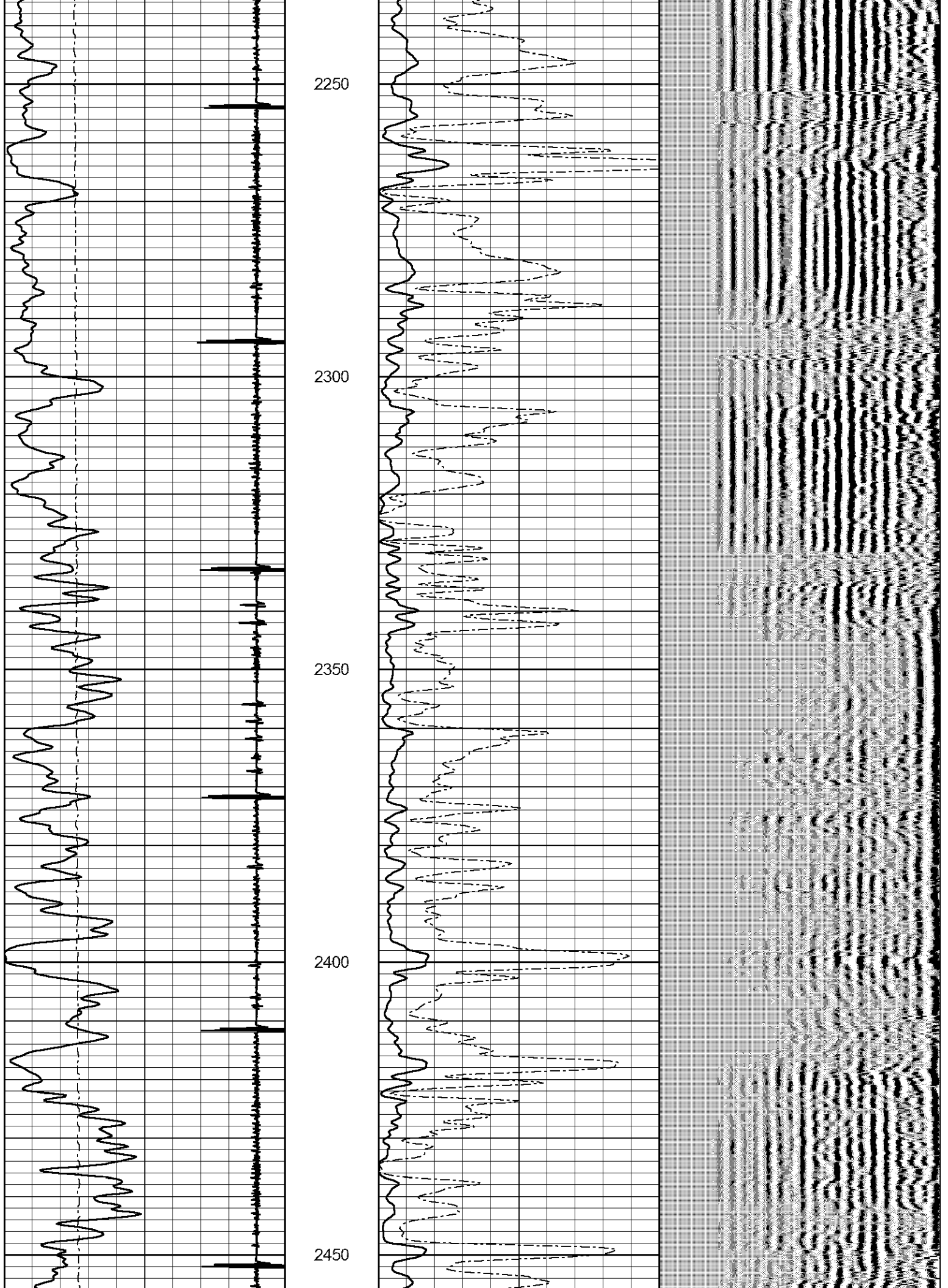
1700

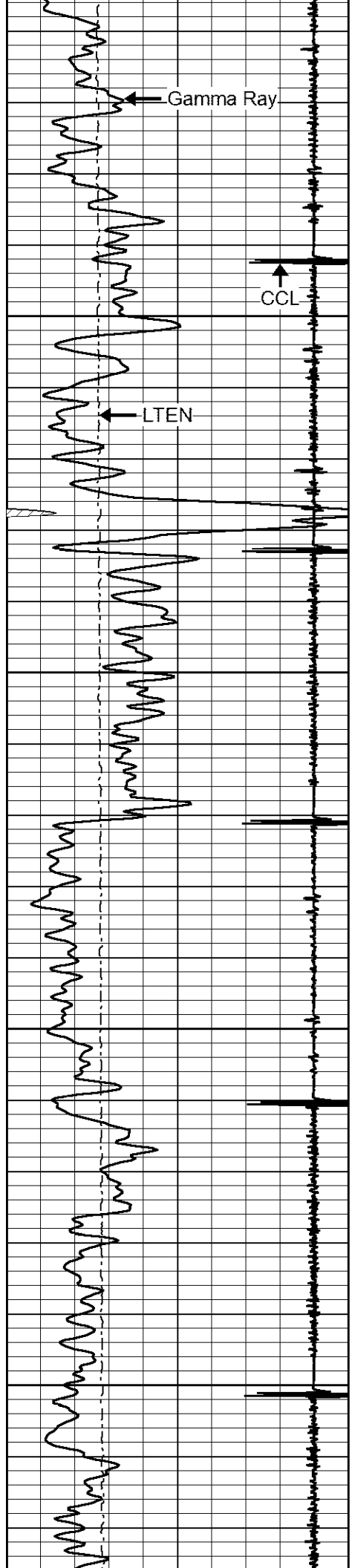
1750









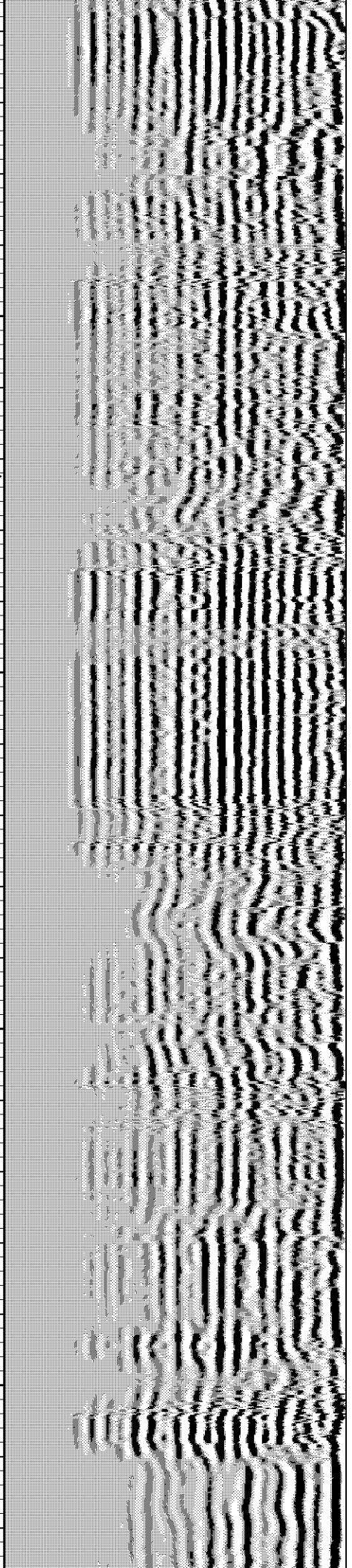
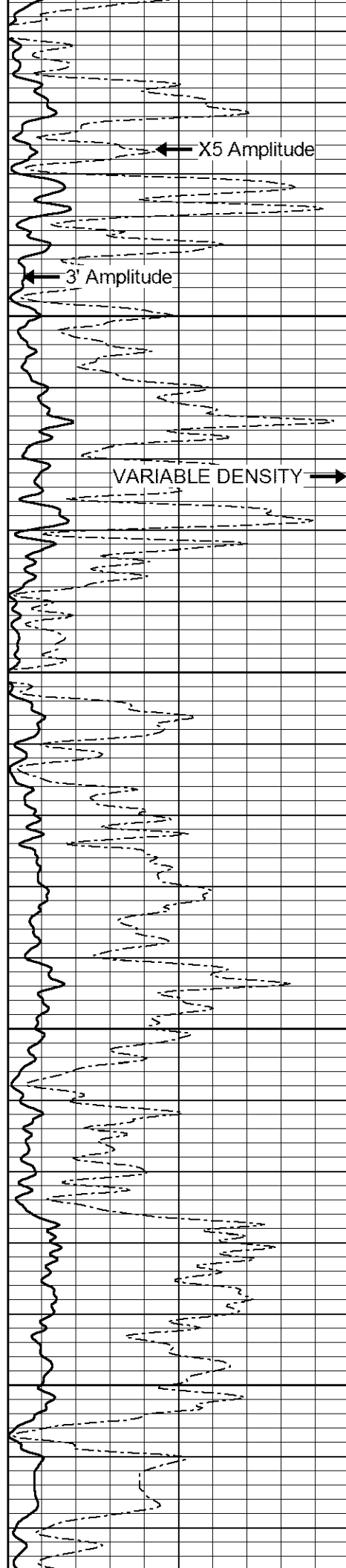


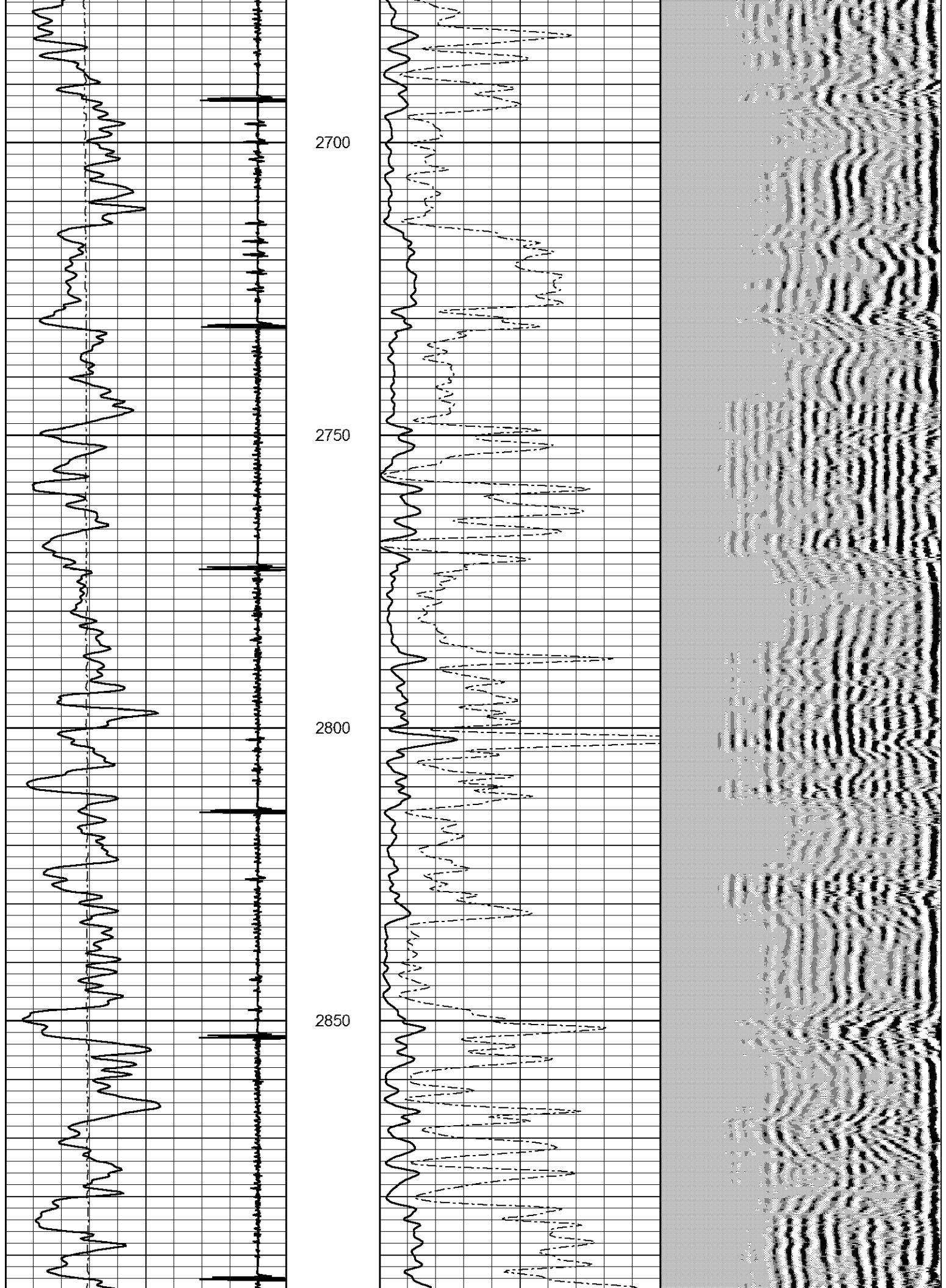
2500

2550

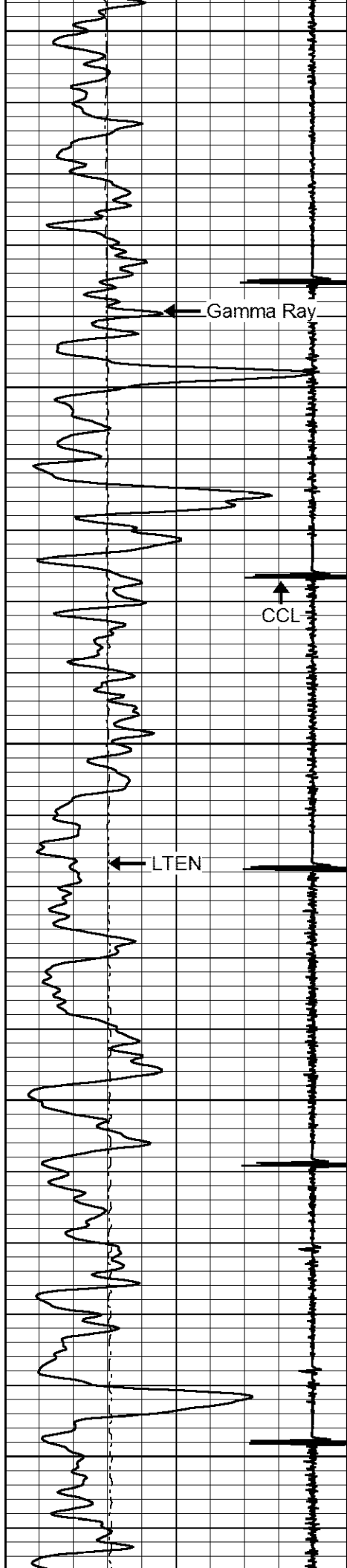
2600

2650









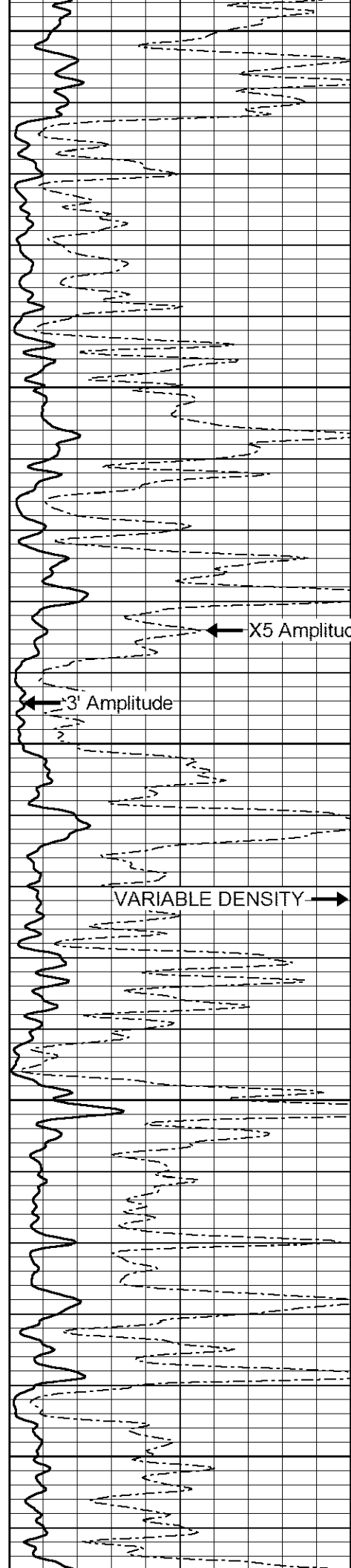
2900

2950

3000

3050

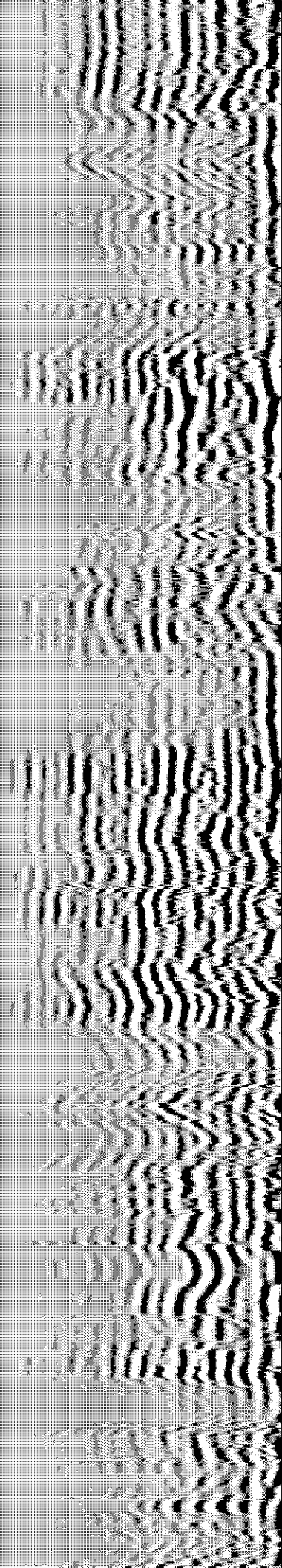
3100

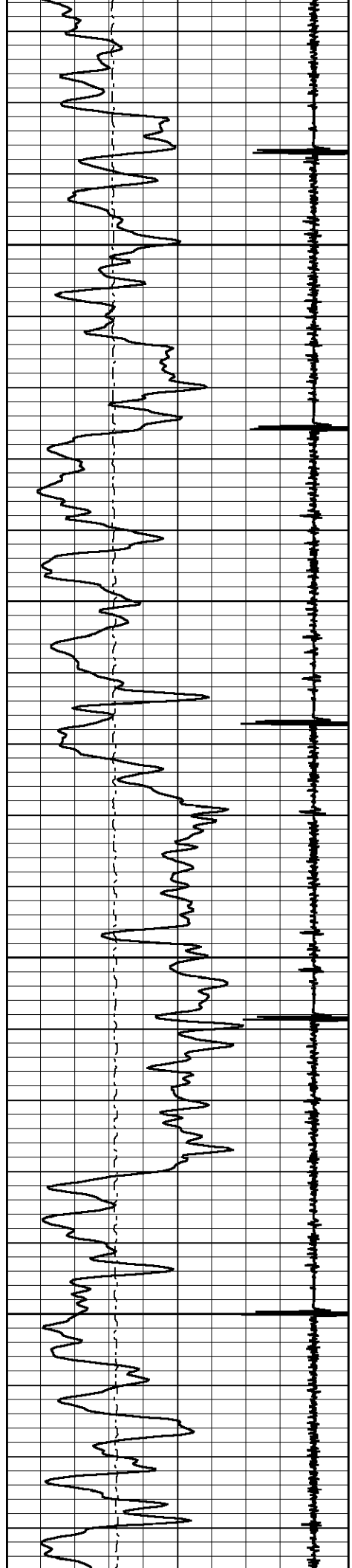


X5 Amplitude

3' Amplitude

VARIABLE DENSITY



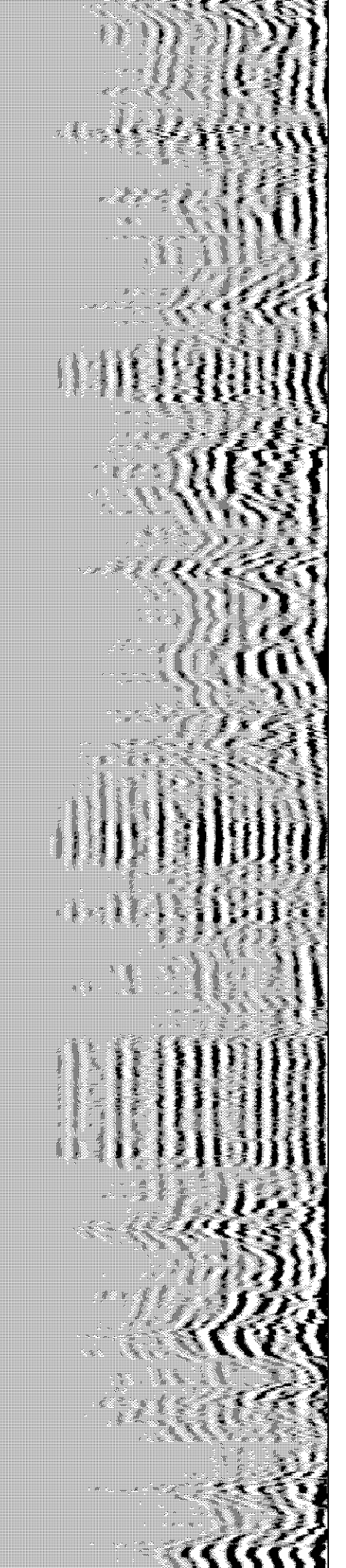
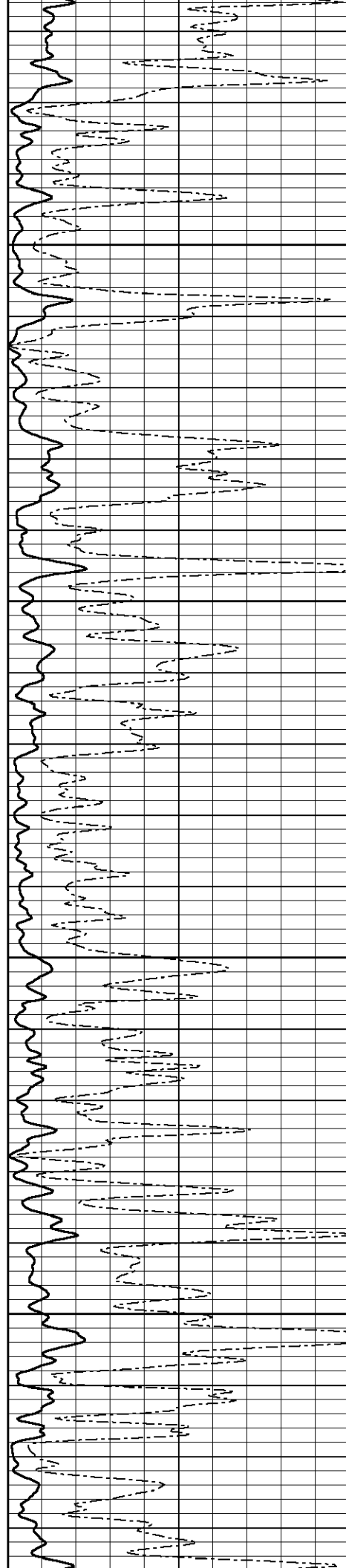


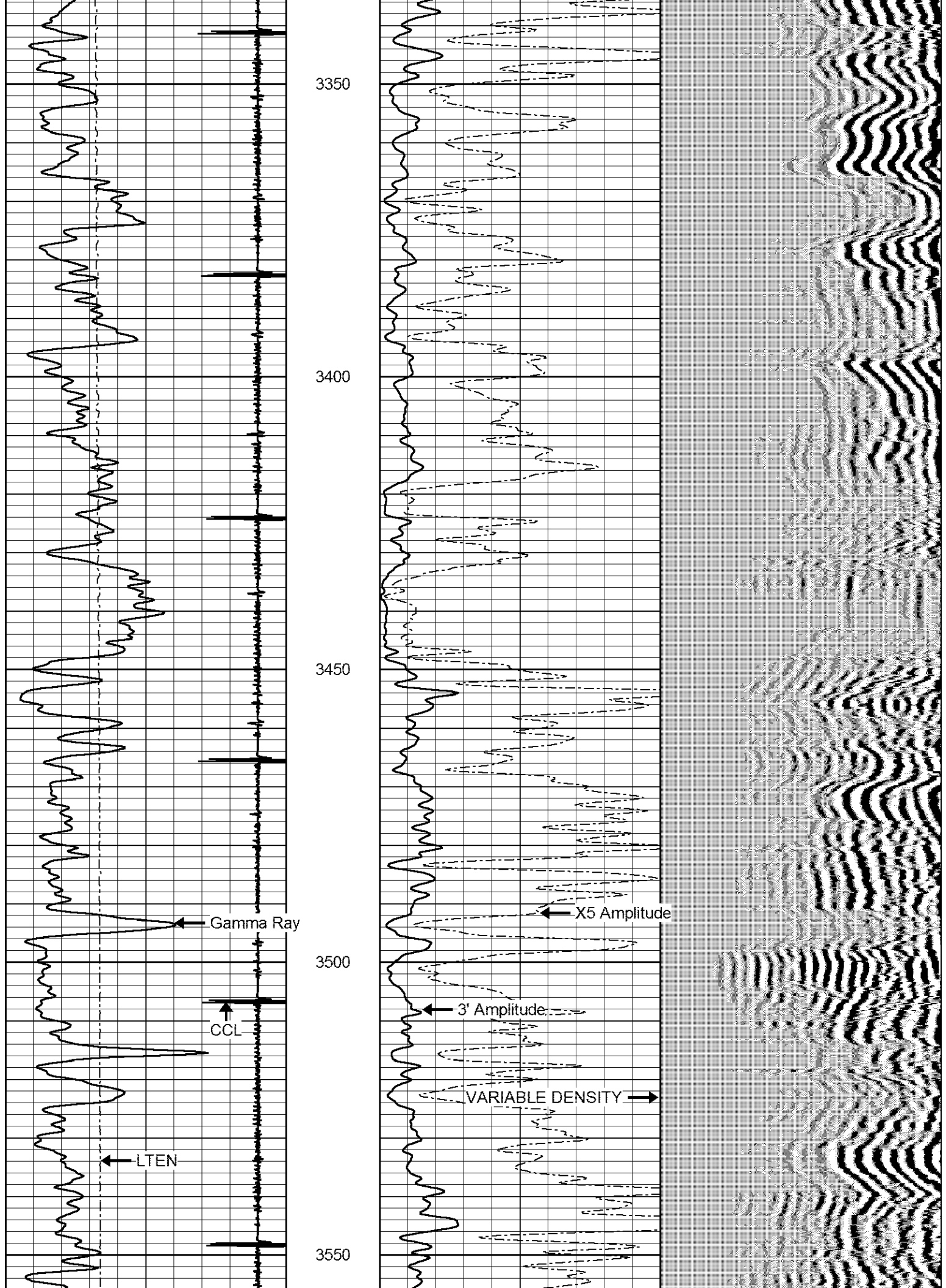
3150

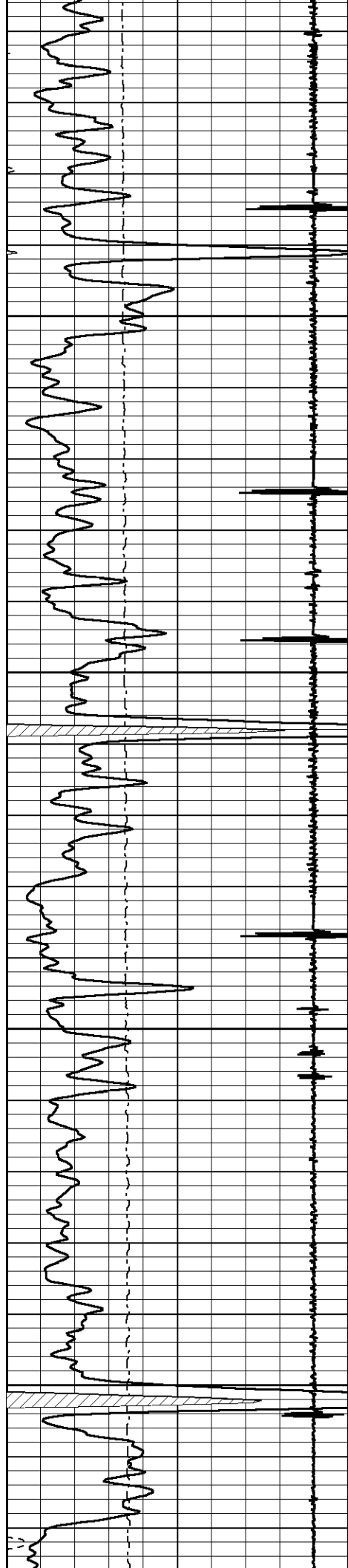
3200

3250

3300





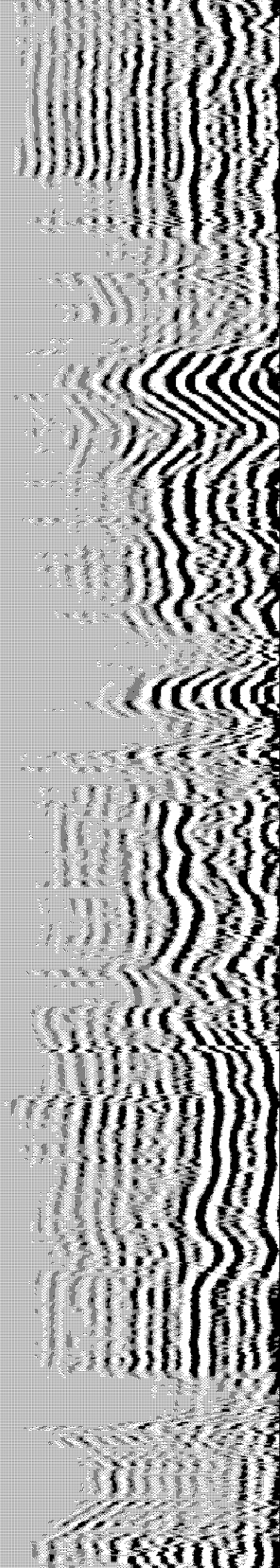
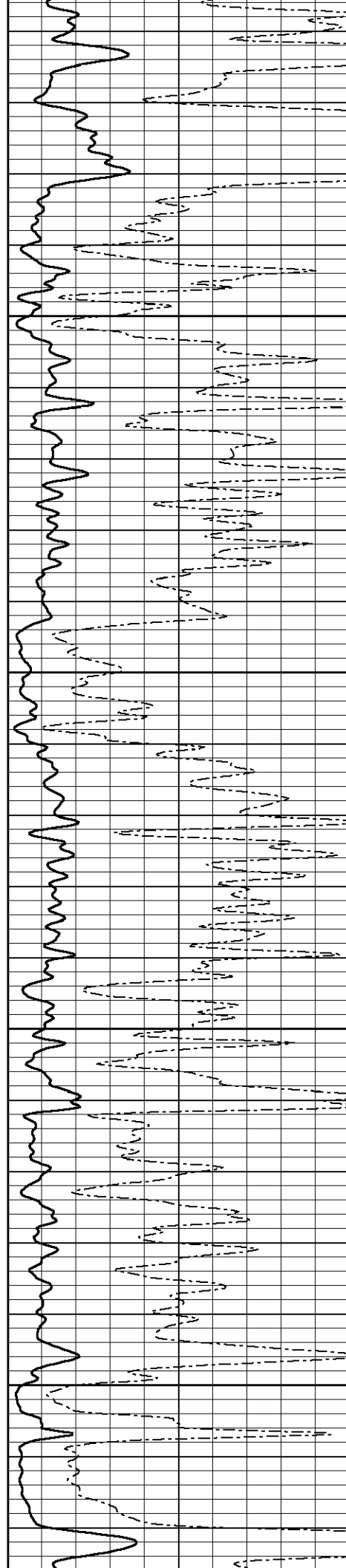


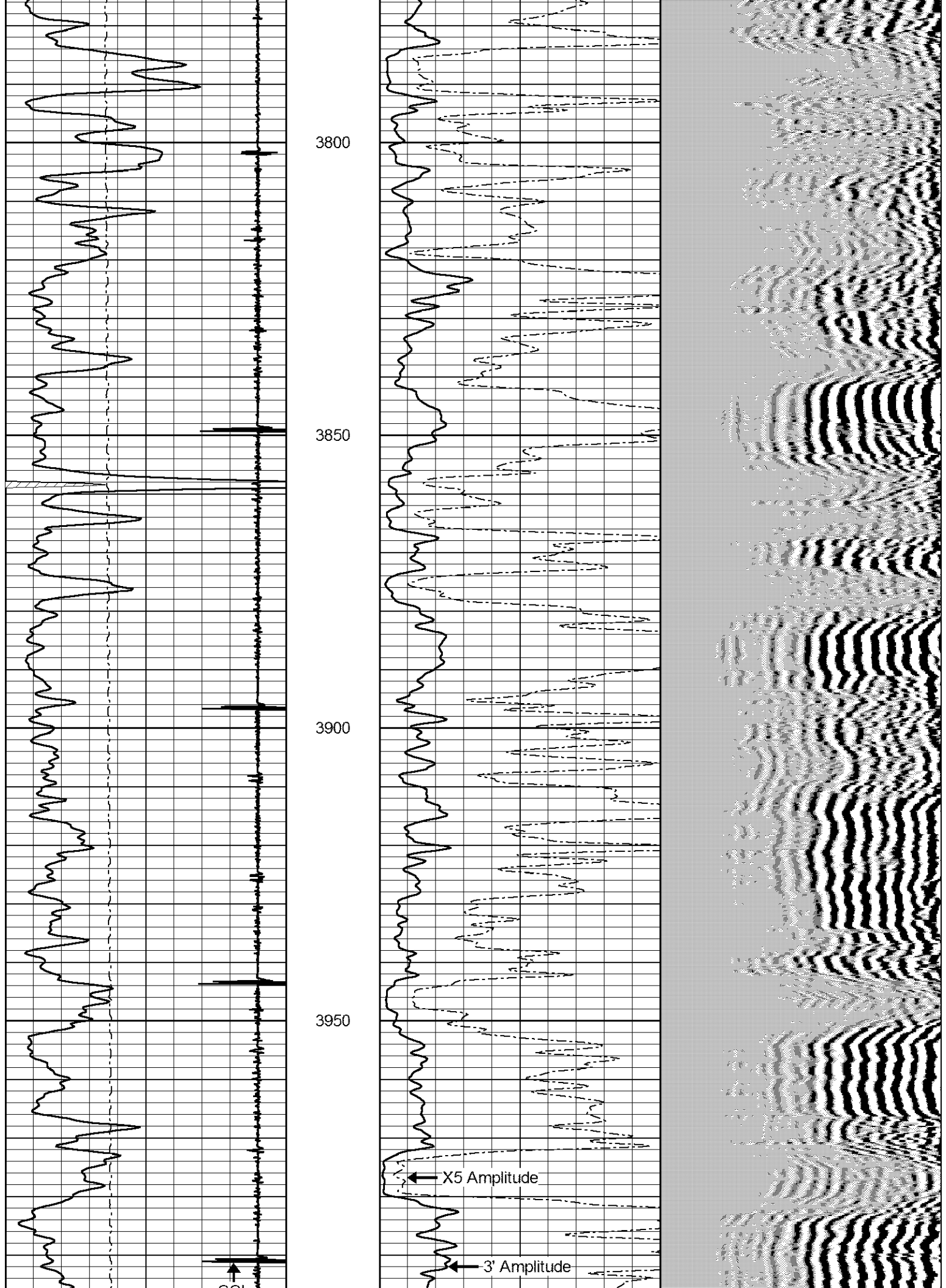
3600

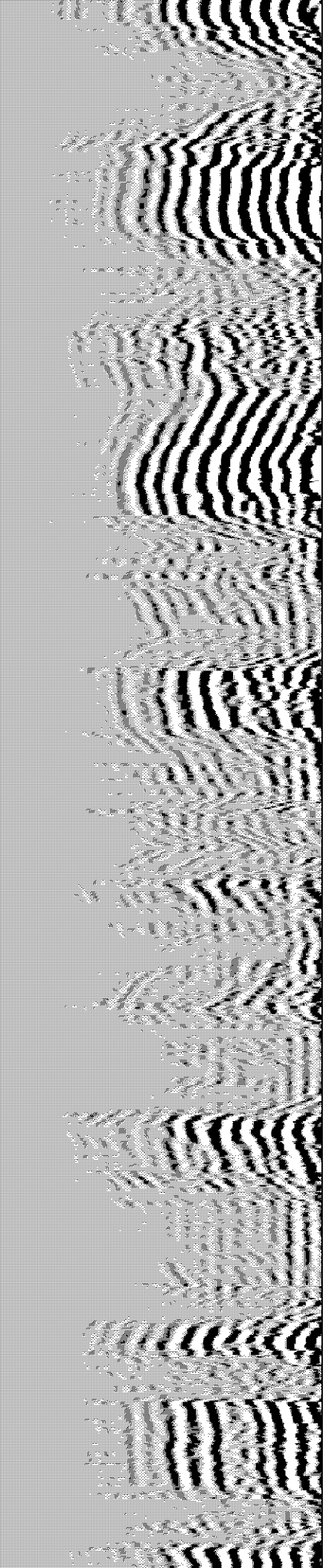
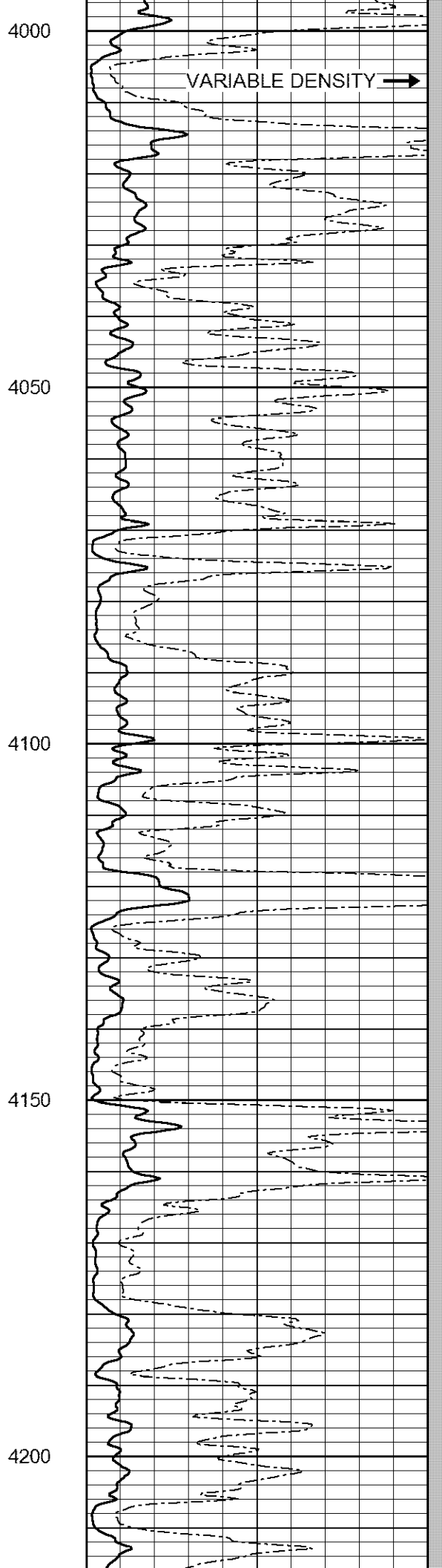
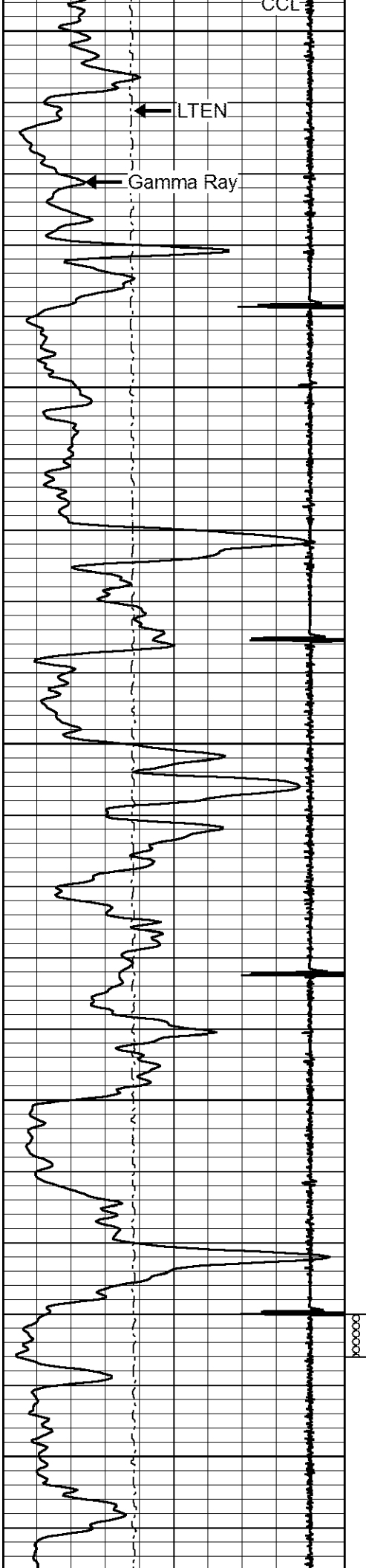
3650

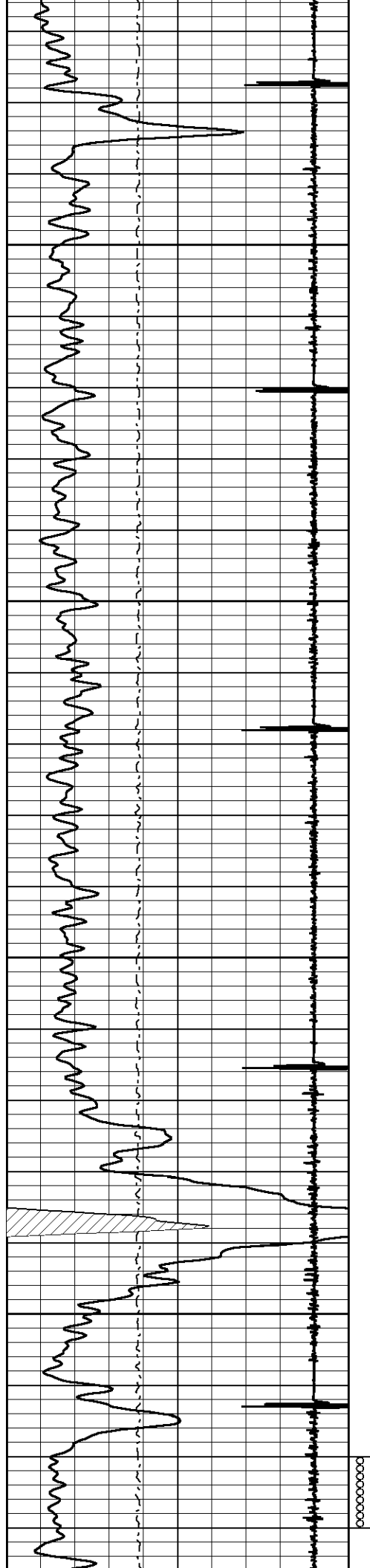
3700

3750







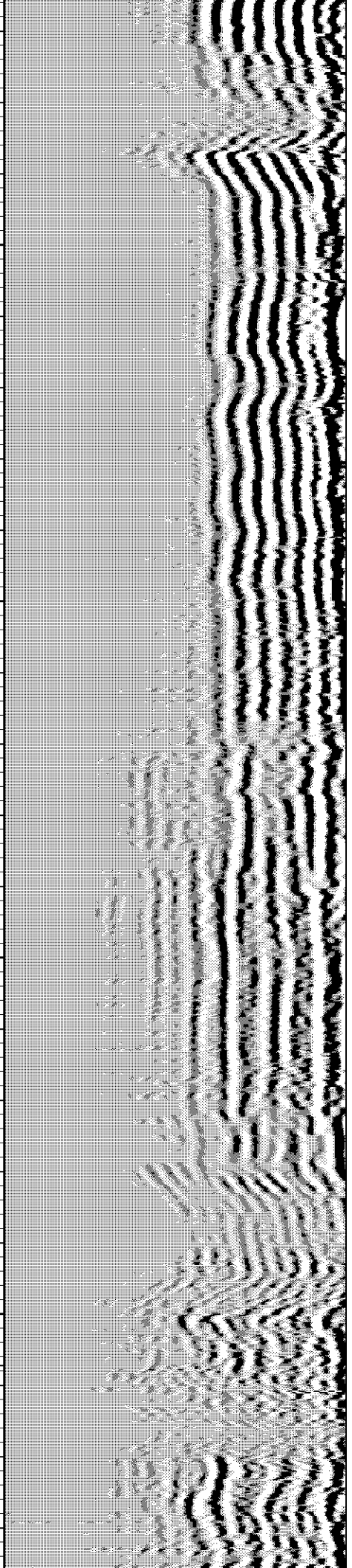
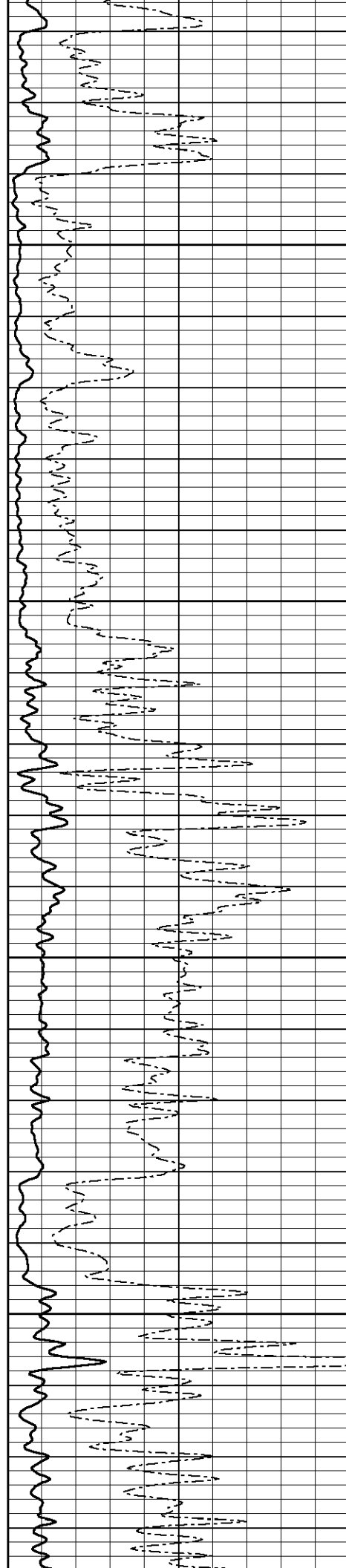


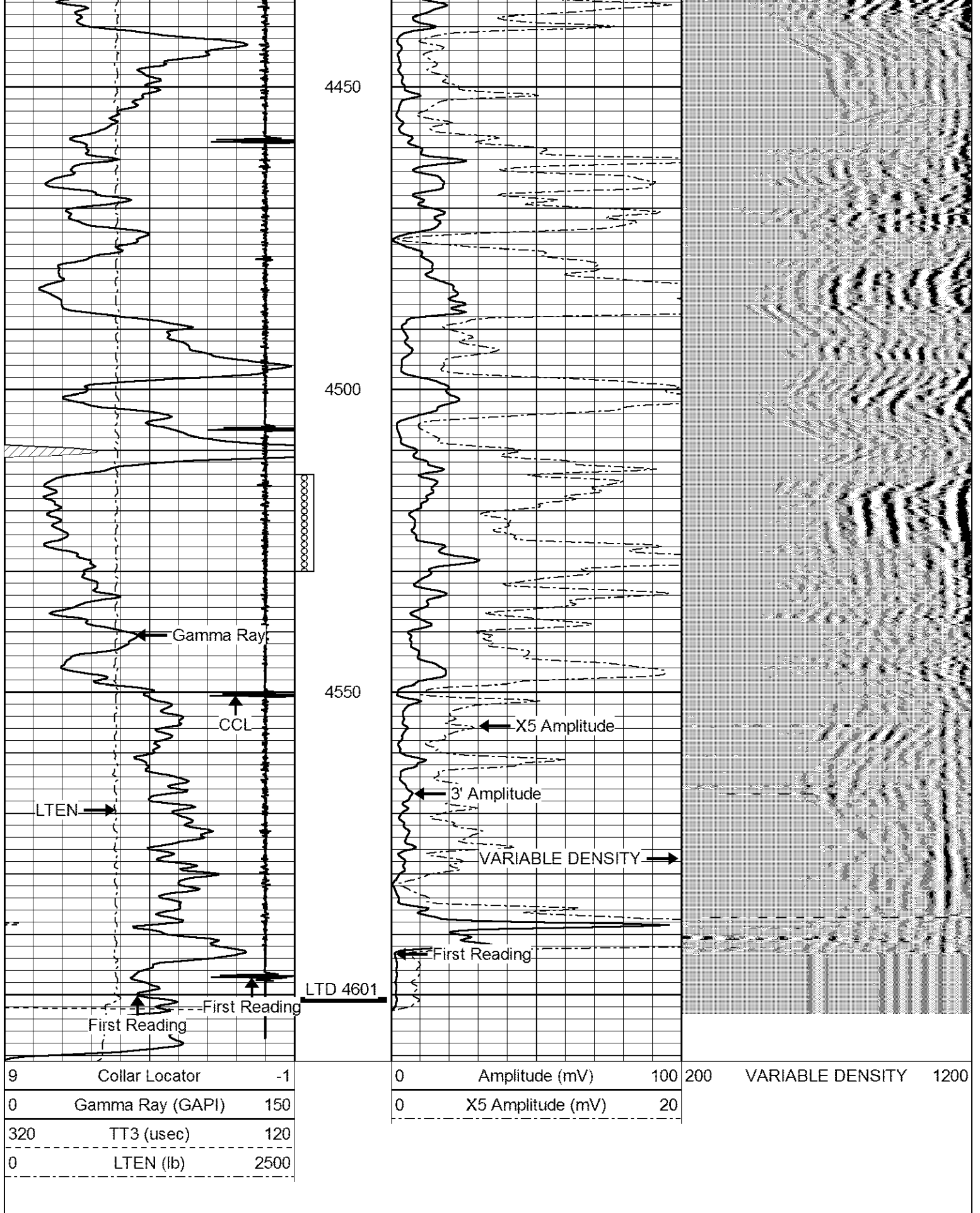
4250

4300

4350

4400





**LOG-TECH**

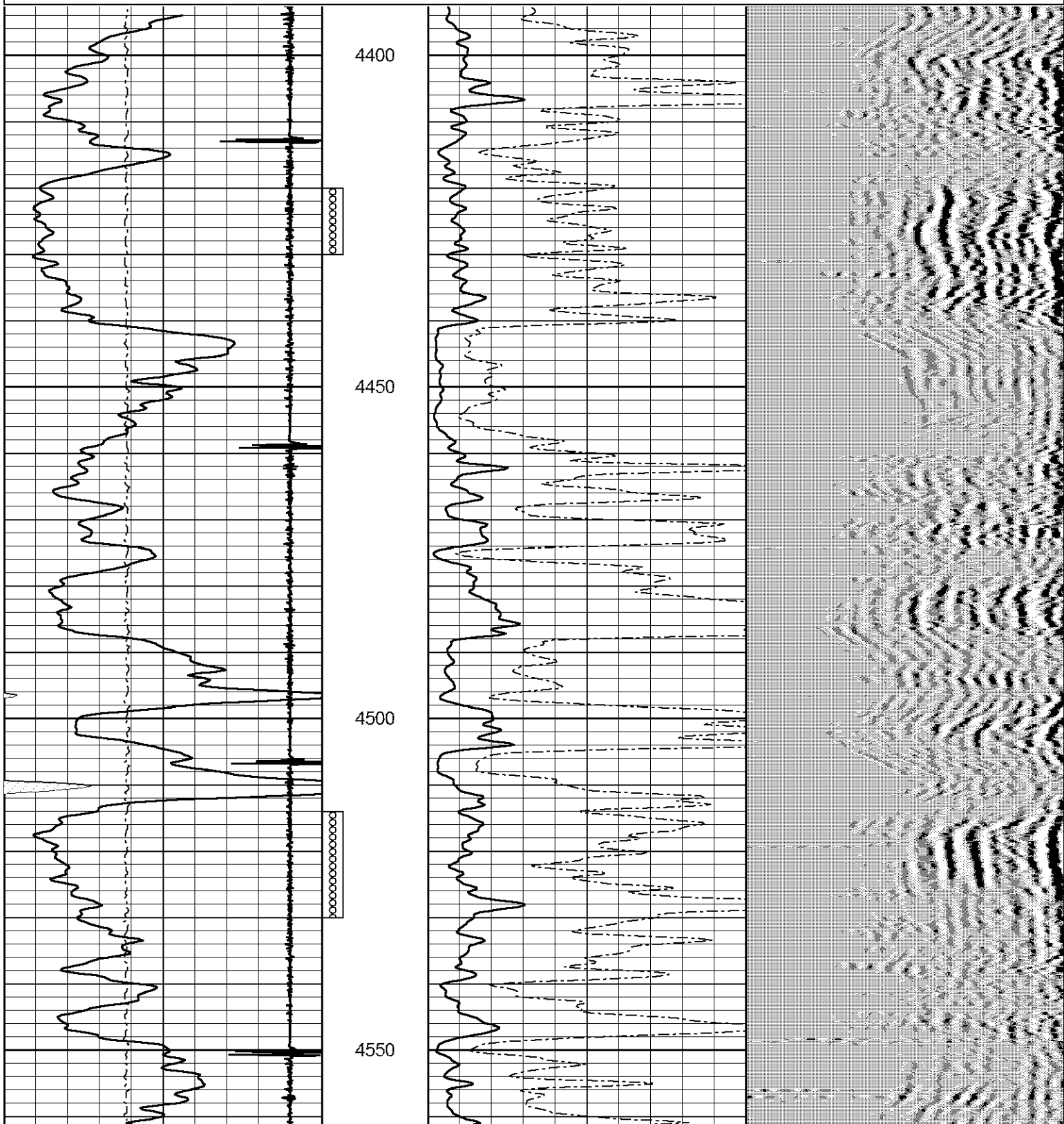
*of Kansas  
Inc.*

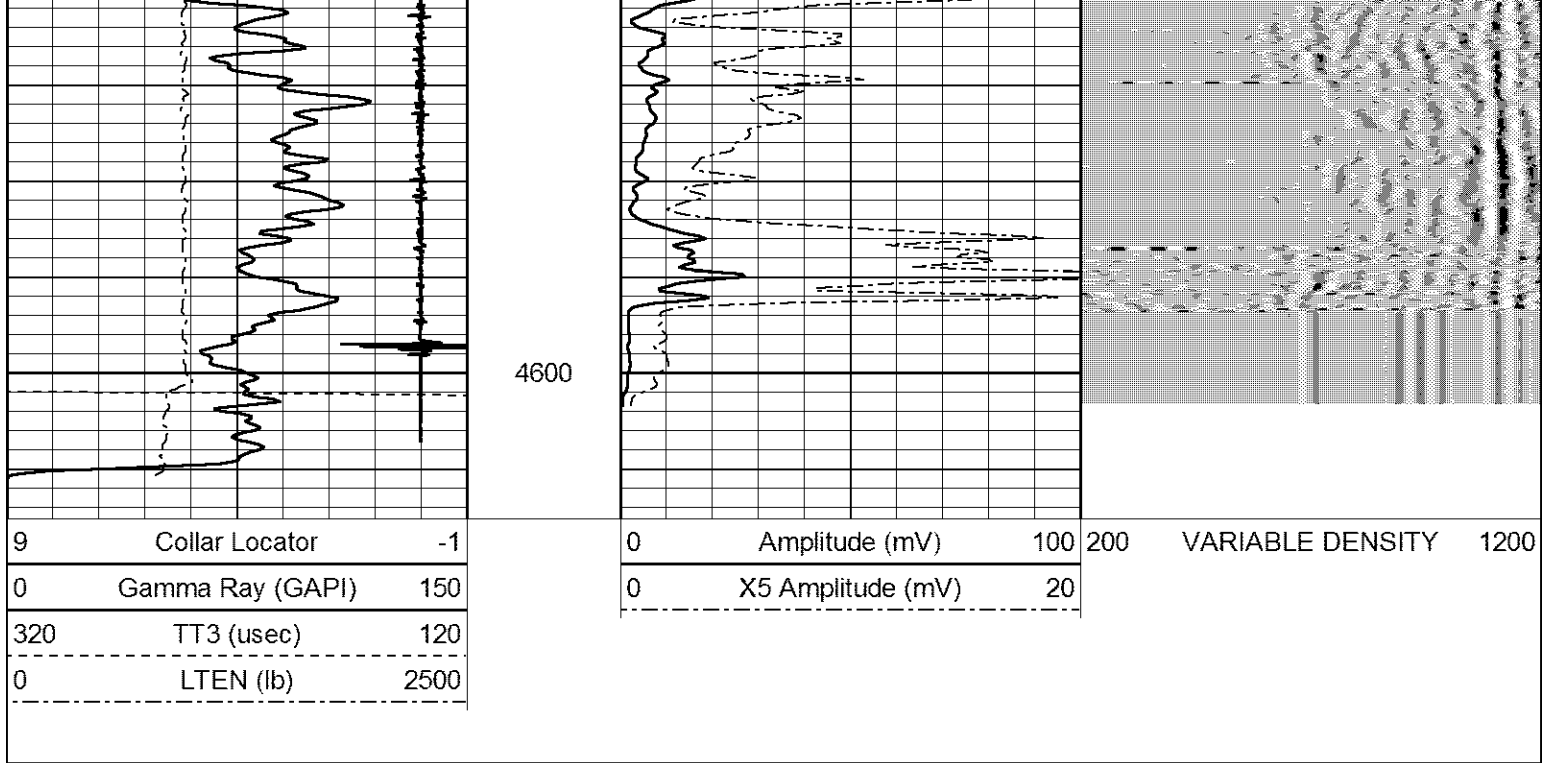
**REPEAT SECTION**



Database File: nichepor132h.db  
 Dataset Pathname: pass3  
 Presentation Format: cbl02  
 Dataset Creation: Tue May 20 10:52:27 2014 by Log 7.0 B1  
 Charted by: Depth in Feet scaled 1:240

9	Collar Locator	-1	0	Amplitude (mV)	100	200	VARIABLE DENSITY	1200
0	Gamma Ray (GAPI)	150	0	X5 Amplitude (mV)	20			
320	TT3 (usec)	120						
0	LTEN (lb)	2500						





Sensor	Offset (ft)	Schematic	Description	Len (ft)	OD (in)	Wt (lb)
			STNDRD Standard Cable Head	1.00	1.69	10.00
WVF3	8.76		CBL-probecbl (probecbl1) probe cbl	8.75	2.75	92.00
WVF5	7.76					

CCL	3.69			CCL-probe (cclpr) probe ccl	1.55	2.75	30.00
GR	0.90			GR-probegr (progr1) probe gamma ray	3.02	2.75	20.00

Dataset: nichepor132h.db: field/well/run1/pass4  
 Total Length: 14.32 ft  
 Total Weight: 152.00 lb  
 O.D.: 2.75 in