

Company	American Patriot Oil	Well	Lohmeyer #1	Field	Wildcat	County	Phillips	State	Kansas
Location:	SEC 6 TWP S5 RGE 20W	Location:	915 FSL & 415 FEL	API #:	00 147 20887	Other Services	DIL	MIL	
Perment Datum	KB 5 ASL	Elevation	1968'	K B 1672'	D F 1672'	G 1 1665'			
Ground Level	KB 5 ASL								
Dilling Measured From	KB 5 ASL								
Date	One	Run Number	3517	Depth Diller	3517	Bottom Logged Interval	3501'	Top Log Interval	8.500 @ 262'
Caseing Diller	7.75'	Bottom Logged Interval	3501'	Caseing Diller	7.75'	Bottom Logged Interval	3501'	Caseing Diller	7.75'
Time First in Hole	Chemical	Time First in Hole	9:21:50	Density / Viscosity	10.517 2	pH / Fluid Loss	1.48 @ 262'	Form @ Meas. Temp	1.12 @ 262'
Maximum Recorded Temperature	1120e9f	Maximum Recorded Temperature	1120e9f	Form @ Meas. Temp	1.12 @ 262'	Form @ Meas. Temp	1.12 @ 262'	Form @ Meas. Temp	1.12 @ 262'
Equipment Number	1045	Equipment Number	1045	Form @ Meas. Temp	1.12 @ 262'	Form @ Meas. Temp	1.12 @ 262'	Form @ Meas. Temp	1.12 @ 262'
Location By	Hays KS	Location By	Hays KS	Form @ Meas. Temp	1.12 @ 262'	Form @ Meas. Temp	1.12 @ 262'	Form @ Meas. Temp	1.12 @ 262'
Recorded By	Wt Randi Kuhn	Recorded By	Wt Randi Kuhn	Form @ Meas. Temp	1.12 @ 262'	Form @ Meas. Temp	1.12 @ 262'	Form @ Meas. Temp	1.12 @ 262'

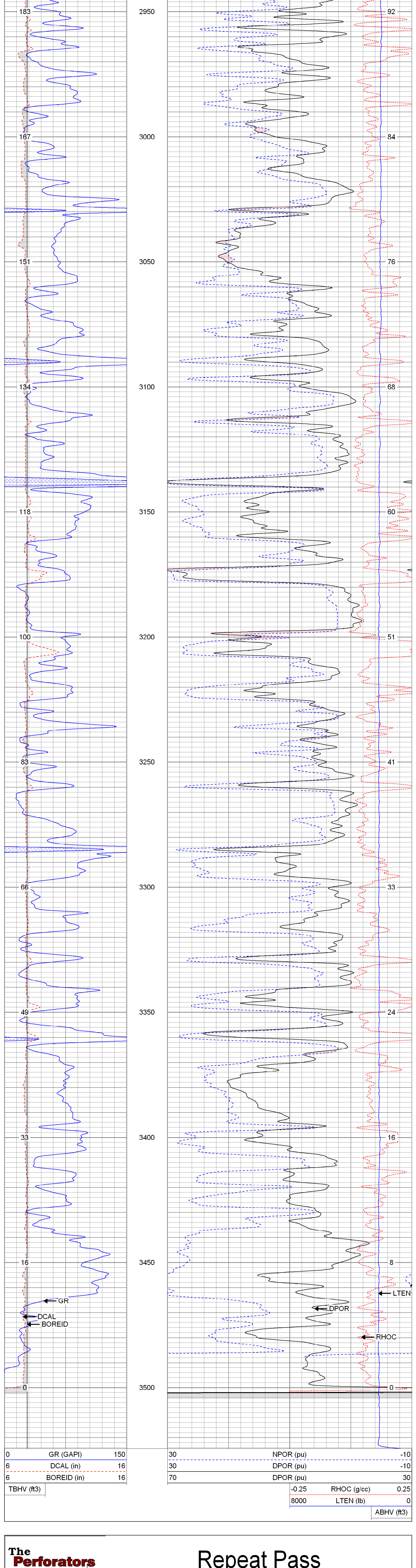
All interpretations are opinions based on inferences from electrical or other measurements and we cannot and do not guarantee the accuracy or correctness of any interpretation, and we shall not, except in the case of gross or willful negligence on our part, be liable or responsible for any loss, costs, damages, or expenses incurred or sustained by anyone resulting from any interpretation made by any of our officers, agents or employees. These interpretations are also subject to our general terms and conditions set out in our current Price Schedule.

Comments

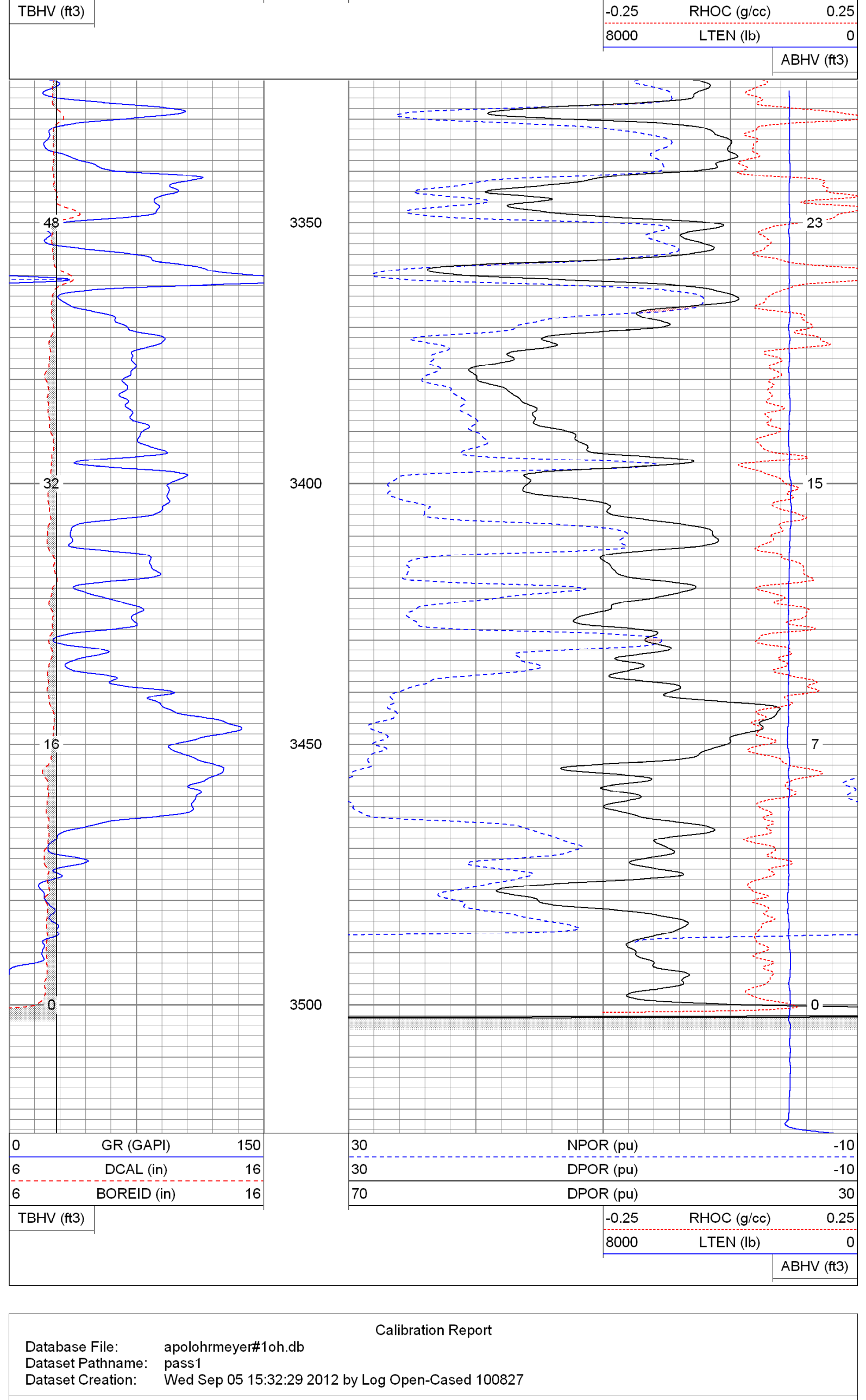
Thanks for using The Perforators LLC
785-621-4604

Main Pass

Database File: apolohmeyer#1oh.db
 Dataset Pathname: pass2.1
 Presentation Format: kcdnl
 Dataset Creation: Wed Sep 05 16:37:06 2012 by Calc Open-Cased 100827
 Charted by: Depth in Feet scaled 1:240



Database File: apolohmeyer#1oh.db
 Dataset Pathname: pass1.2
 Presentation Format: kcdnl
 Dataset Creation: Wed Sep 05 17:29:56 2012 by Calc Open-Cased 100827
 Charted by: Depth in Feet scaled 1:240



Calibration Report

Database File: apolohmeyer#1oh.db
 Dataset Pathname: pass1
 Dataset Creation: Wed Sep 05 15:32:29 2012 by Log Open-Cased 100827

Dual Induction Calibration Report

Serial-Model: 080522-Probe
 Surface Cal Performed: Tue Aug 28 14:15:03 2012
 Downhole Cal Performed: Tue Aug 28 14:15:06 2012
 After Survey Verification Performed: Tue Aug 28 14:15:08 2012

Surface Calibration		Readings		References		Results	
Loop:	Air	Loop	V	Air	Loop	m	b
Deep	0.000	0.639	V	0.000	400.000	626.539	-0.207
Medium	0.001	0.736	V	0.000	464.000	631.594	-0.848
Internal:	Zero	Cal		Zero	Cal	m	b
Deep	0.000	0.639	V	0.000	400.000	626.575	-0.168
Medium	0.001	0.736	V	0.000	464.000	631.625	-0.945

Downhole Calibration		Readings		References		Results	
	Zero	Cal	V	Zero	Cal	m'	b'
Deep	0.306	400.046	mmho/m	-0.038	399.939	1.001	-0.344
Medium	0.355	464.559	mmho/m	0.096	464.073	1.000	-0.258
LL3		7.250	V		750.000		
		-0.000	V		12.000		
		-7.360	V		3745.000		

Compensated Density Calibration Report

Serial-Model: 2501DHT-DHT
 Source / Verifier: Master Calibration Performed: Wed Sep 05 08:08:00 2012

Master Calibration		Density	Far Detector	Near Detector
Magnesium	2.680	g/cc	684.07	246.22
Aluminum	1.750	g/cc	128.12	163.12
Spine Angle = 76.19		Density/Spine Ratio = 0.539		
	Size	Reading		
Small Ring	7.65	in	6273.19	
Large Ring	14.00	in	10676.90	

Gamma Ray Calibration Report

Serial Number: 2001
 Tool Model: OH
 Performed: Wed Aug 29 08:26:23 2012
 Calibrator Value: 1.0 GAPI
 Background Reading: 0.0 cps
 Calibrator Reading: 1.0 cps
 Sensitivity: 0.2300 GAPI/cps

Neutron Calibration Report

Serial Number: 5108
 Tool Model: PROBE
 Performed: Mon Sep 03 08:08:04 2012
 Calibrator Value: 1 NAPI
 Calibrator Reading: 1 cps
 Sensitivity: 1 NAPI/cps

Sensor	Offset (ft)	Schematic	Description	Len (ft)	OD (in)	Wt (lb)
NEU	37.85		None	0.75	1.50	5.00
			NEU-PROBE (5108) Probe	4.92	3.63	85.00
GR	32.32		GR-OH (2001) 2001	3.56	3.25	40.00
LSD	23.78		CDL-DHT (2501DHT) Digital High Temp CDL Tool	9.69	4.00	201.00
DCAL	23.49					
SSD	23.24					
HEADVOLT	21.47					
CILD	10.60		DIL-Probe (080522) Probe Dual Induction	21.47	4.00	345.00
SP	10.60					
CILM	6.89					
RLL3	1.70					

Dataset: apolohmeyer#1oh.db; field/well/run1/pass1
 Total Length: 40.39 ft
 Total Weight: 676.00 lb
 O.D.: 4.00 in