



Pioneer Energy Services

Dual Compensated Porosity Log

API No. 15-051-26,400-00-00

Company: **Hertel Oil Company, LLC**
 Well: **Larry No. 1**
 Field: **Unnamed**
 County: **Ellis** State: **Kansas**

Location: **1635' FNL & 330' FEL**

Sec: **15** Twp: **15 S** Rge: **19 W**

Other Services: **DIL/MEL**

Permanent Datum: **Ground Level** Elevation 2004
 Log Measured From: **Kelly Bushing** 8 Ft. Above Perm. Datum
 Drilling Measured From: **Kelly Bushing**

Elevation: **K.B. 2012**
D.F. 2004
G.L. 2004

Date	10/9/2012	
Run Number	One	
Type Log	CNL / CDL	
Depth Driller	3700	
Depth Logger	3701	
Bottom Logged Interval	3680	
Top Logged Interval	2900	
Type Fluid In Hole	Chemical	
Salinity, PPM CL	4500	
Density	9.4	
Level	Full	
Max. Rec. Temp. F	113	
Operating Rig Time	3 1/2 Hours	
Equipment -- Location	15 Hays	
Recorded By	D.Kerr	
Witnessed By	Herb Deines	

Borehole Record		Casing Record				
Run No	Bit From	To	Size	Wgt. 23#	From	To
One	12.25	00	1219	8.625	00	1219
Two	7.875	1219	TD			

<<< Fold Here >>>

All interpretations are opinions based on inferences from electrical or other measurements and we cannot and do not guarantee the accuracy or correctness of any interpretation, and we shall not, except in the case of gross or willful negligence on our part, be liable or responsible for any loss, costs, damages, or expenses incurred or sustained by anyone resulting from any interpretation made by any of our officers, agents or employees. These interpretations are also subject to our general terms and conditions set out in our current Price Schedule.

Comments

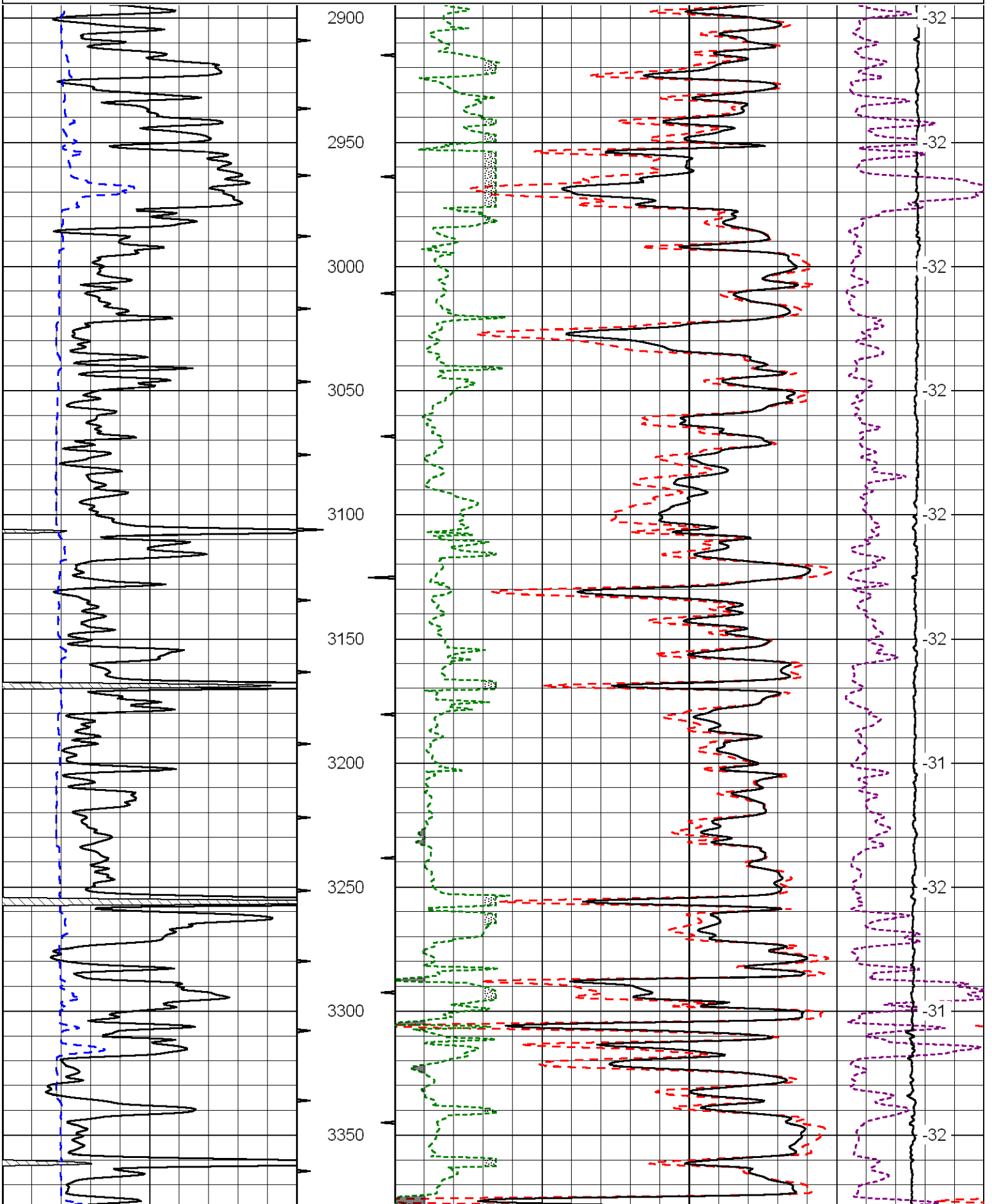
Thank you for using Log-Tech, Inc.
 (785) 625-3858

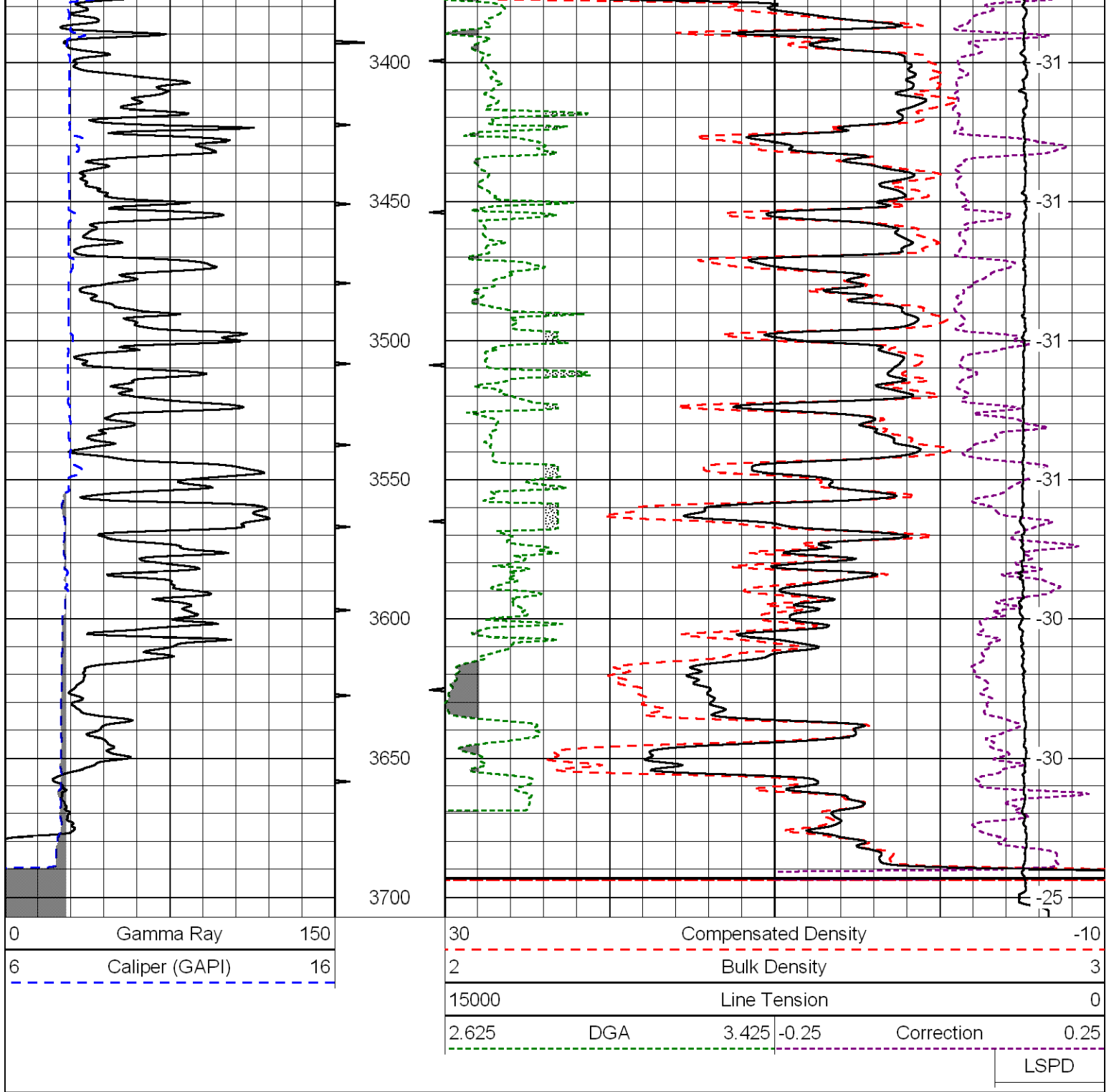
Antonino KS, 1 West,
 2 1/2 South, West North Into

Database File: hertel_larry_1hd.db
 Dataset Pathname: DIL/hertstk
 Presentation Format: cdl
 Dataset Creation: Tue Oct 09 07:53:06 2012
 Charted by: Depth in Feet scaled 1:600

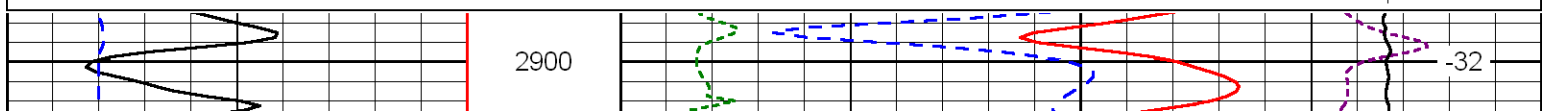
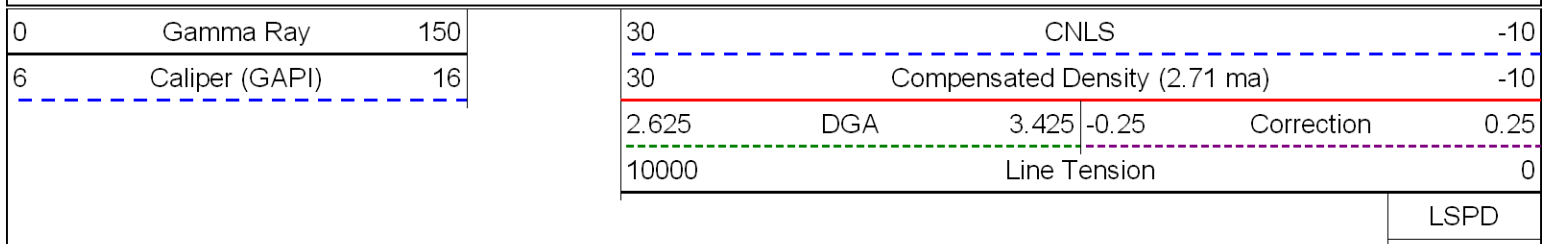
0	Gamma Ray	150
6	Caliper (GAPI)	16

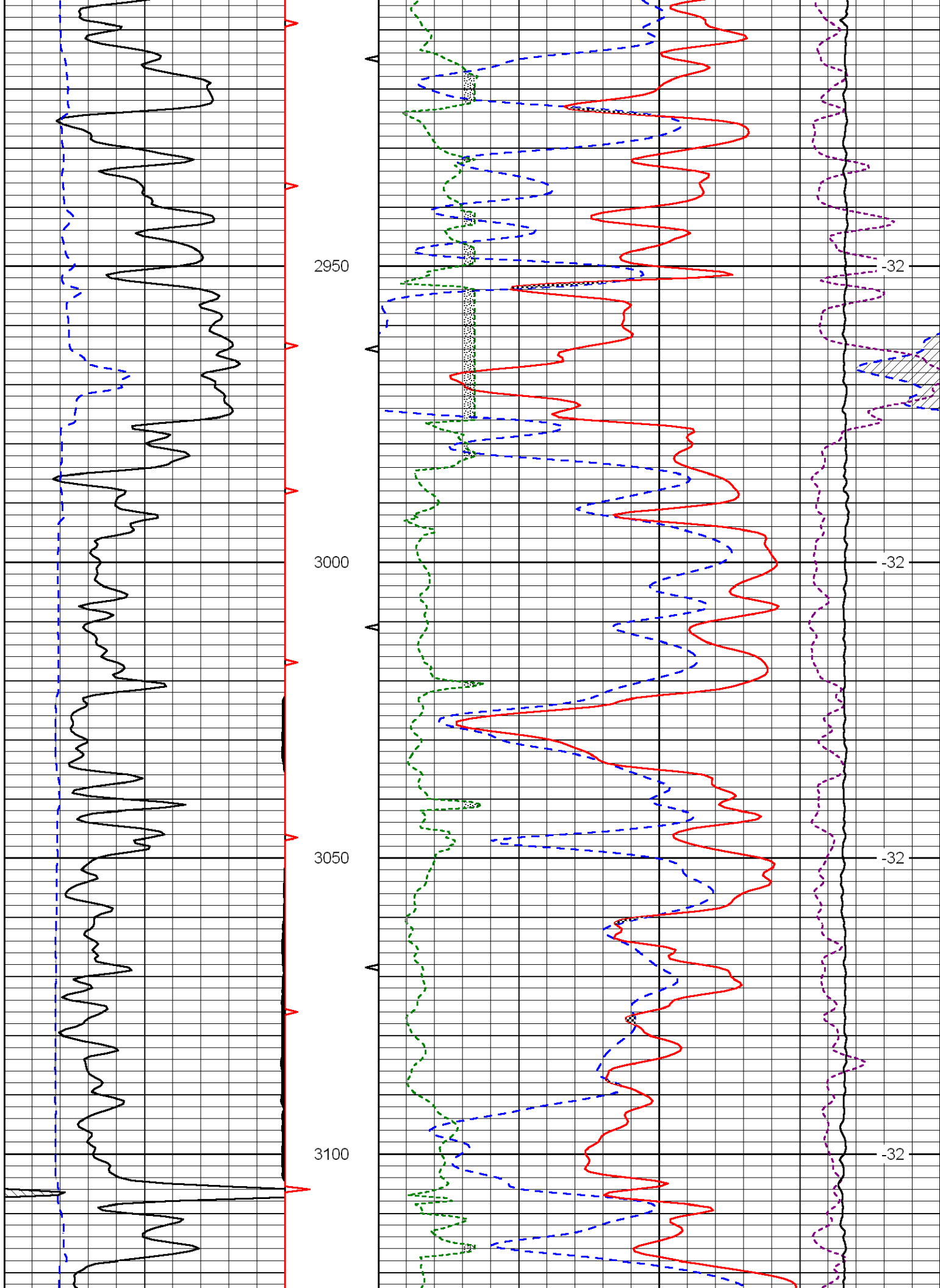
30	Compensated Density		-10
2	Bulk Density		3
15000	Line Tension		0
2.625	DGA	3.425	-0.25
Correction			0.25
LSPD			

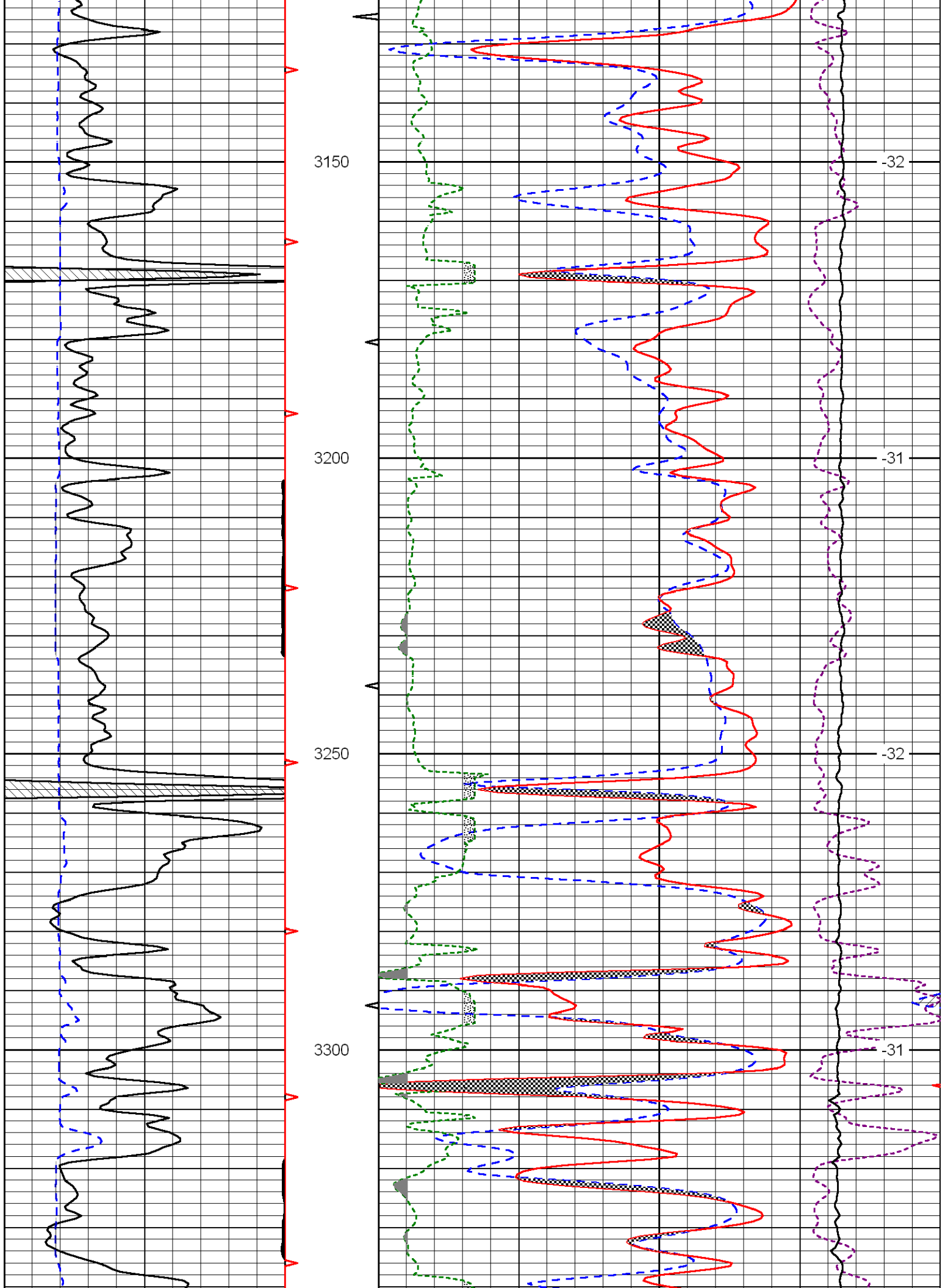


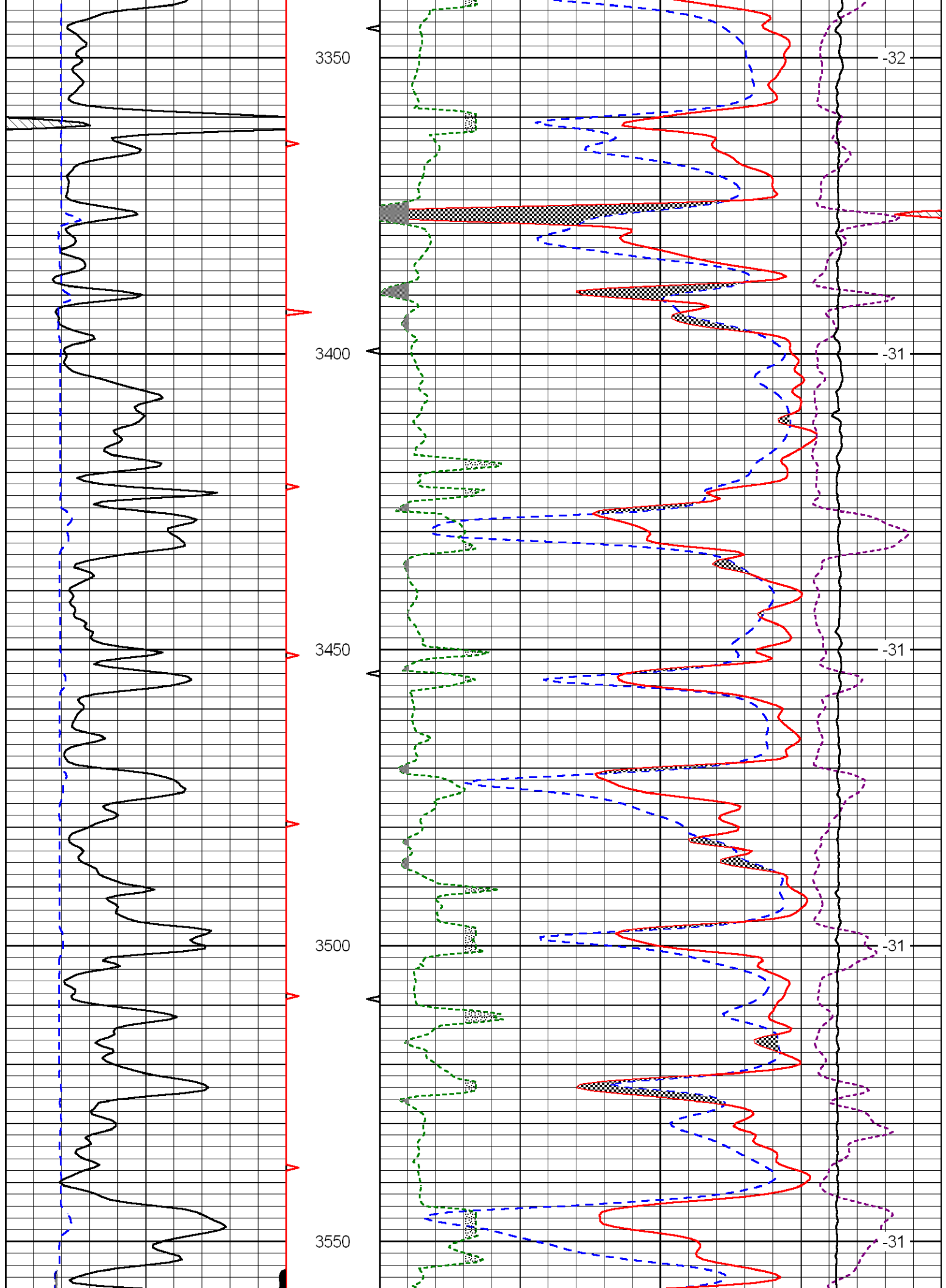


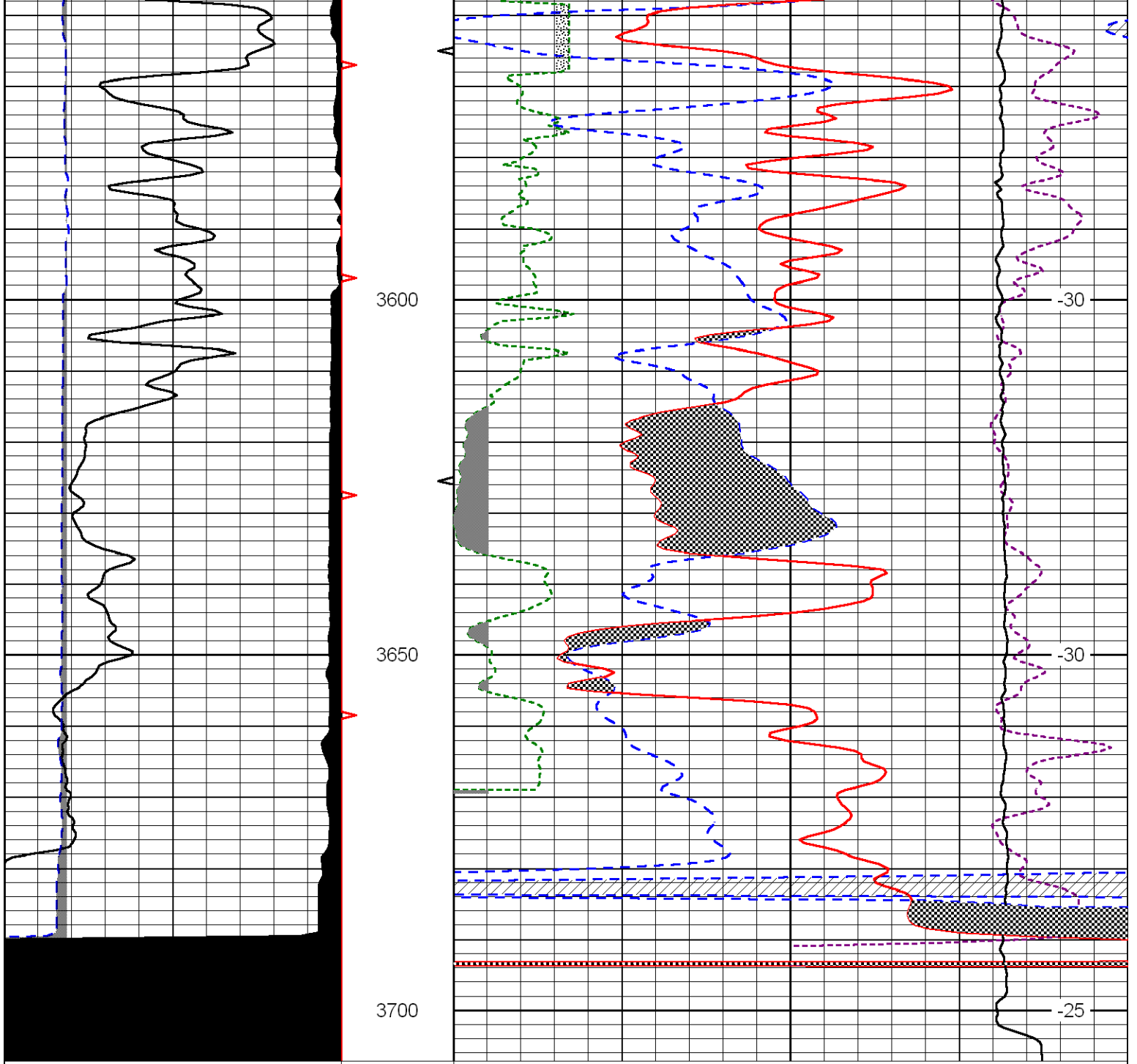
Database File: hertel_jarry_1hd.db
 Dataset Pathname: DIL/hertstk
 Presentation Format: cndlspec
 Dataset Creation: Tue Oct 09 07:53:06 2012
 Charted by: Depth in Feet scaled 1:240











0	Gamma Ray	150
6	Caliper (GAPI)	16

30	CNLS			-10	
30	Compensated Density (2.71 ma)			-10	
2.625	DGA	3.425	-0.25	Correction	0.25
10000	Line Tension			0	

LSPD