

Company	Lohrmeyer #1	County	Phillips	State	Kansas
Field	Wildcat	Location:	915 FSL & 415 FEL	Other Services	
Well	American Patriot Oil	SEC 6	TWP 5S	R3E 20W	Elevation
Field	Lohrmeyer #1	Fermant Datum	Ground Level	Elevation	1988
County	Phillips	Log Measured From	KB 5' AGL	K.B. 1973	
Drilling Measured From	KB	Bottom Logged Interval	3489'	D.F. 1972	
Date	10-12-12	Top Log Interval	2535'	C.L. 1988	
Run Number	019	Operator	WJF		
Depth	3624'	Operator State	KS		
Bottom Logged Interval	3489'	Density / Viscosity	111		
Top Log Interval	2535'	Max. Recorded Temp.	111		
Estimated Cement Top	446 RM				
Time Logger on Bottom	5:30 PM				
Equipment Number	1740				
Location	Phillips				
Recorded By	Casey Patterson				
Revised By	WJF				
Run Number	1	Size	10	Weight	From
Bit	10	Turning Record	From	Weight	To
Size	6.500	GP	0	Bottom	259
Production String					

All interpretations are opinions based on inferences from electrical or other measurements and we cannot and do not guarantee the accuracy or correctness of any interpretation, and we shall not, except in the case of gross or willful negligence on our part, be liable or responsible for any loss, costs, damages, or expenses incurred or sustained by anyone resulting from any interpretation made by any of our officers, agents or employees. These interpretations are also subject to our general terms and conditions set out in our current Price Schedule.

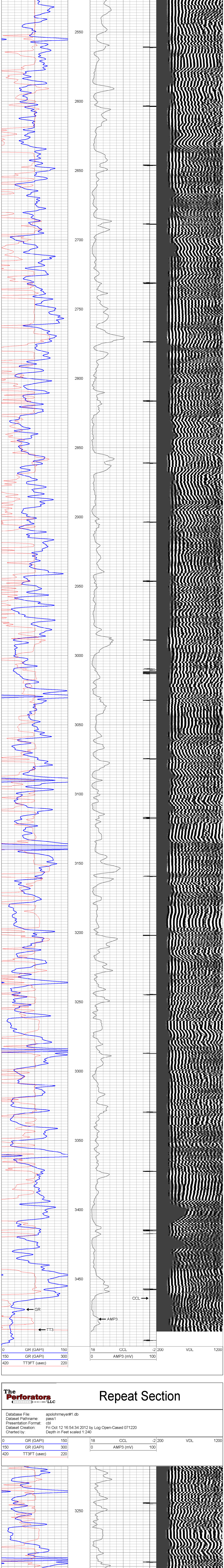
Comments

<<< Fold Here >>>

Main Pass

Database File: apolohrmeyer#1.db
 Dataset Pathname: pass2
 Presentation Format: cbl
 Dataset Creation: Fri Oct 12 17:04:13 2012 by Log Open-Cased 071220
 Charted by:

0	GR (GAPI)	150	18	CCL	-2	200	VDL	1200
150	GR (GAPI)	300	0	AMP3 (mV)	100			
420	TT3FT (usec)	220						

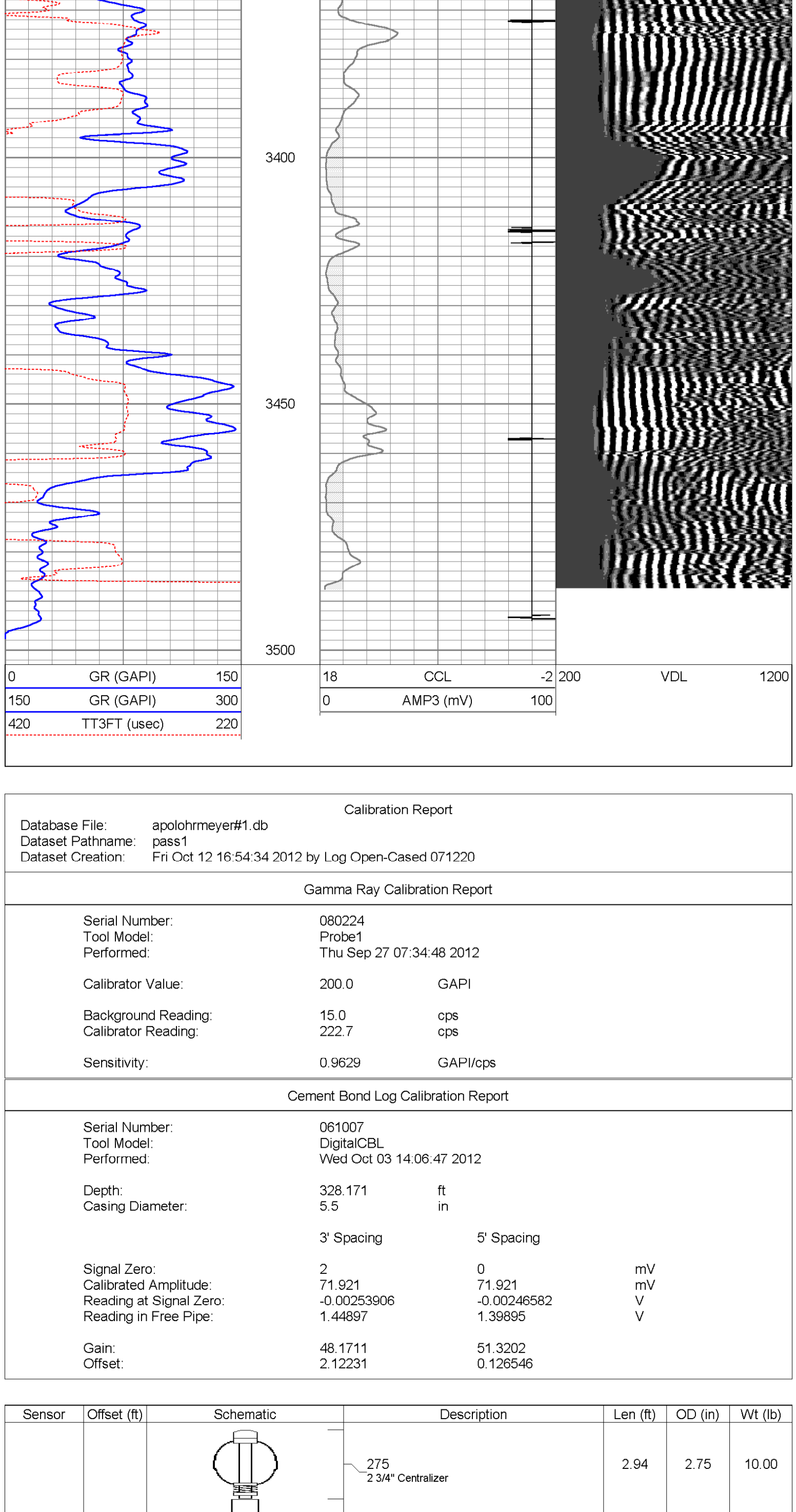


0	GR (GAPI)	150	18	CCL	-2	200	VDL	1200
150	GR (GAPI)	300	0	AMP3 (mV)	100			
420	TT3FT (usec)	220						

Repeat Section

Database File: apolohrmeyer#1.db
 Dataset Pathname: pass1
 Presentation Format: cbl
 Dataset Creation: Fri Oct 12 16:54:34 2012 by Log Open-Cased 071220
 Charted by:

0	GR (GAPI)	150	18	CCL	-2	200	VDL	1200
150	GR (GAPI)	300	0	AMP3 (mV)	100			
420	TT3FT (usec)	220						



0	GR (GAPI)	150	18	CCL	-2	200	VDL	1200
150	GR (GAPI)	300	0	AMP3 (mV)	100			
420	TT3FT (usec)	220						

Calibration Report

Database File: apolohrmeyer#1.db
 Dataset Pathname: pass1
 Dataset Creation: Fri Oct 12 16:54:34 2012 by Log Open-Cased 071220

Gamma Ray Calibration Report

Serial Number:	080224		
Tool Model:	Probe1		
Performed:	Thu Sep 27 07:34:48 2012		
Calibrator Value:	200.0	GAPI	
Background Reading:	15.0	cps	
Calibrator Reading:	222.7	cps	
Sensitivity:	0.9629	GAPI/cps	

Cement Bond Log Calibration Report

Serial Number:	061007		
Tool Model:	DigitalCBL		
Performed:	Wed Oct 03 14:06:47 2012		
Depth:	328.171	ft	
Casing Diameter:	5.5	in	
Signal Zero:	2	0	mV
Calibrated Amplitude:	71.921	71.921	mV
Reading at Signal Zero:	-0.00253906	-0.00246582	v
Reading in Free Pipe:	1.44897	1.39895	v
Gain:	48.1711	51.3202	
Offset:	2.12231	0.126546	

Sensor	Offset (ft)	Schematic	Description	Len (ft)	OD (in)	Wt (lb)
			275 2 3/4" Centralizer	2.94	2.75	10.00
WWF3	11.69		Probedig-DigitalCBL (061007)	8.77	2.75	92.00
WWF5	10.69		275 2 3/4" Centralizer	2.94	2.75	10.00
CCL	3.67		CCL-Probe (080224)	1.42	2.75	20.00
GR	2.30		GR-Probe1 (080224)	3.08	2.75	40.00

Dataset: apolohrmeyer#1.db; field/well/run1/pass1
 Total Length: 19.14 ft
 Total Weight: 172.00 lb
 O.D.: 2.75 in