



SUPERIOR
Hays,
Kansas

MICRO
LOG

Company VINCENT OIL CORPORATION
Well LOKKEN #1-29
Field WILDCAT
County FORD
State KANSAS

Company VINCENT OIL CORPORATION
Well LOKKEN #1-29
Field WILDCAT
County FORD State KANSAS

Location: API # : 15-057-20823-0000
820' FNL & 540' FEL
SEC 29 TWP 29S RGE 24W
Permanent Datum GROUND LEVEL Elevation 2564
Log Measured From KELLY BUSHING 10' A.G.L.
Drilling Measured From KELLY BUSHING
Other Services
CDL/CNL/PE
DIL/SONIC
Elevation
K.B. 2574
D.F. 2572
G.L. 2564

Date	8/2/12		
Run Number	TWO		
Depth Driller	5420		
Depth Logger	5420		
Bottom Logged Interval	5400		
Top Log Interval	4100		
Casing Driller	8 5/8"@644'		
Casing Logger	644		
Bit Size	7 7/8"		
Type Fluid in Hole	CHEMICAL MUD	CHLORIDES 9,400 PPM	
Density / Viscosity	8.9/55		
pH / Fluid Loss	9.0/14.8		
Source of Sample	FLOWLINE		
Rm @ Meas. Temp	.450@90F		
Rmt @ Meas. Temp	.338@90F		
Rmc @ Meas. Temp	.540@90F		
Source of Rmf / Rmc	MEASUREMENT		
Rm @ BHT	.314@129F		
Time Circulation Stopped	5.5 HOURS		
Time Logger on Bottom	6:45 A.M.		
Maximum Recorded Temperature	129F		
Equipment Number	4010		
Location	HAYS, KANSAS		
Recorded By	JEFF LUEBBERS		
Witnessed By	JIM HALL		

<<< Fold Here >>>

All interpretations are opinions based on inferences from electrical or other measurements and we cannot and do not guarantee the accuracy or correctness of any interpretation, and we shall not, except in the case of gross or willful negligence on our part, be liable or responsible for any loss, costs, damages, or expenses incurred or sustained by anyone resulting from any interpretation made by any of our officers, agents or employees. These interpretations are also subject to our general terms and conditions set out in our current Price Schedule.

Comments

THANK YOU FOR USING SUPERIOR WELL SERVICE HAYS, KANSAS (785) 628-6395
DIRECTIONS
BLOOM, KS. & HWY 54, W. ON HWY 54 TO "CLARK COUNTY RD.9", 2 1/2N., W. INTO

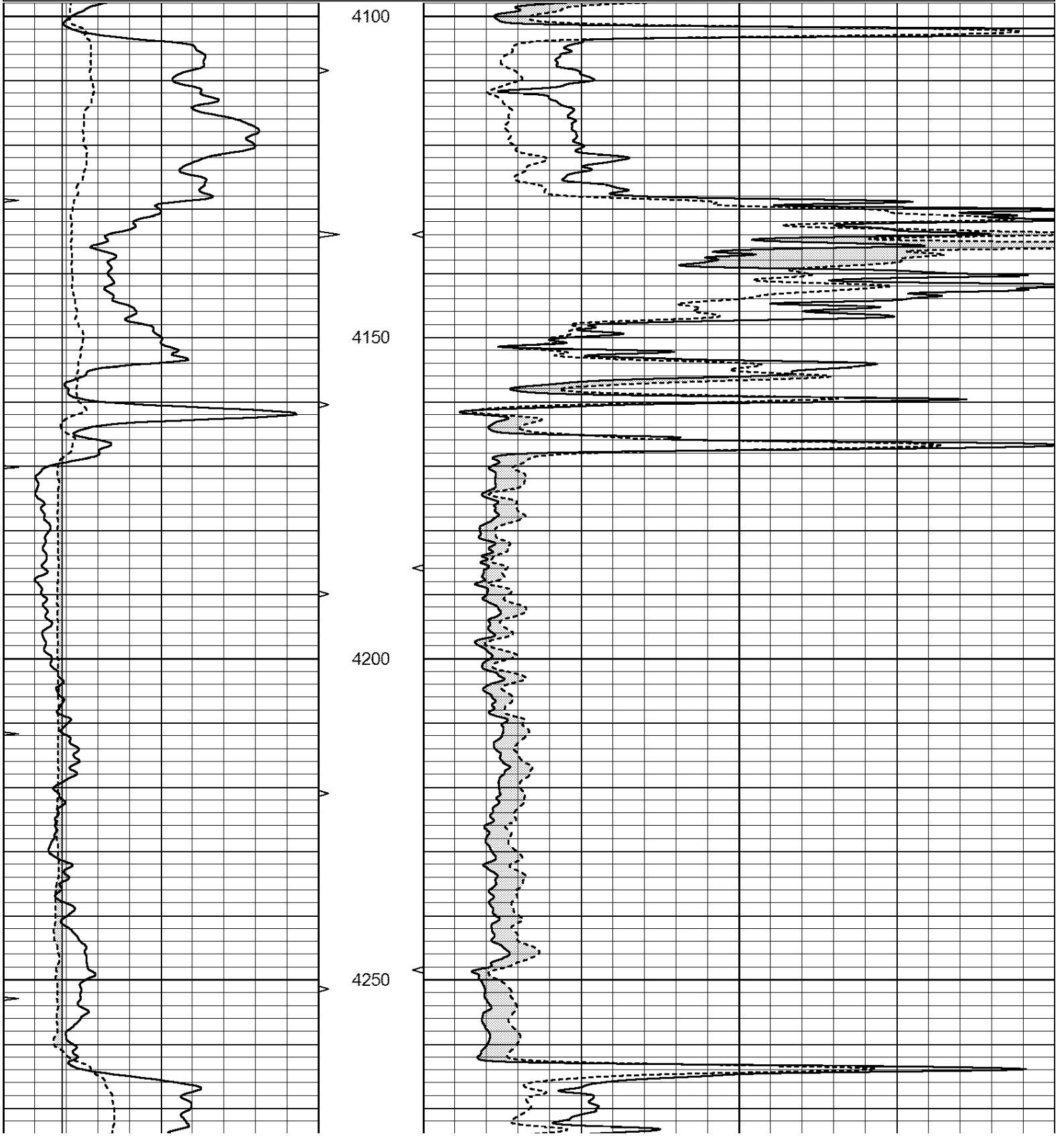


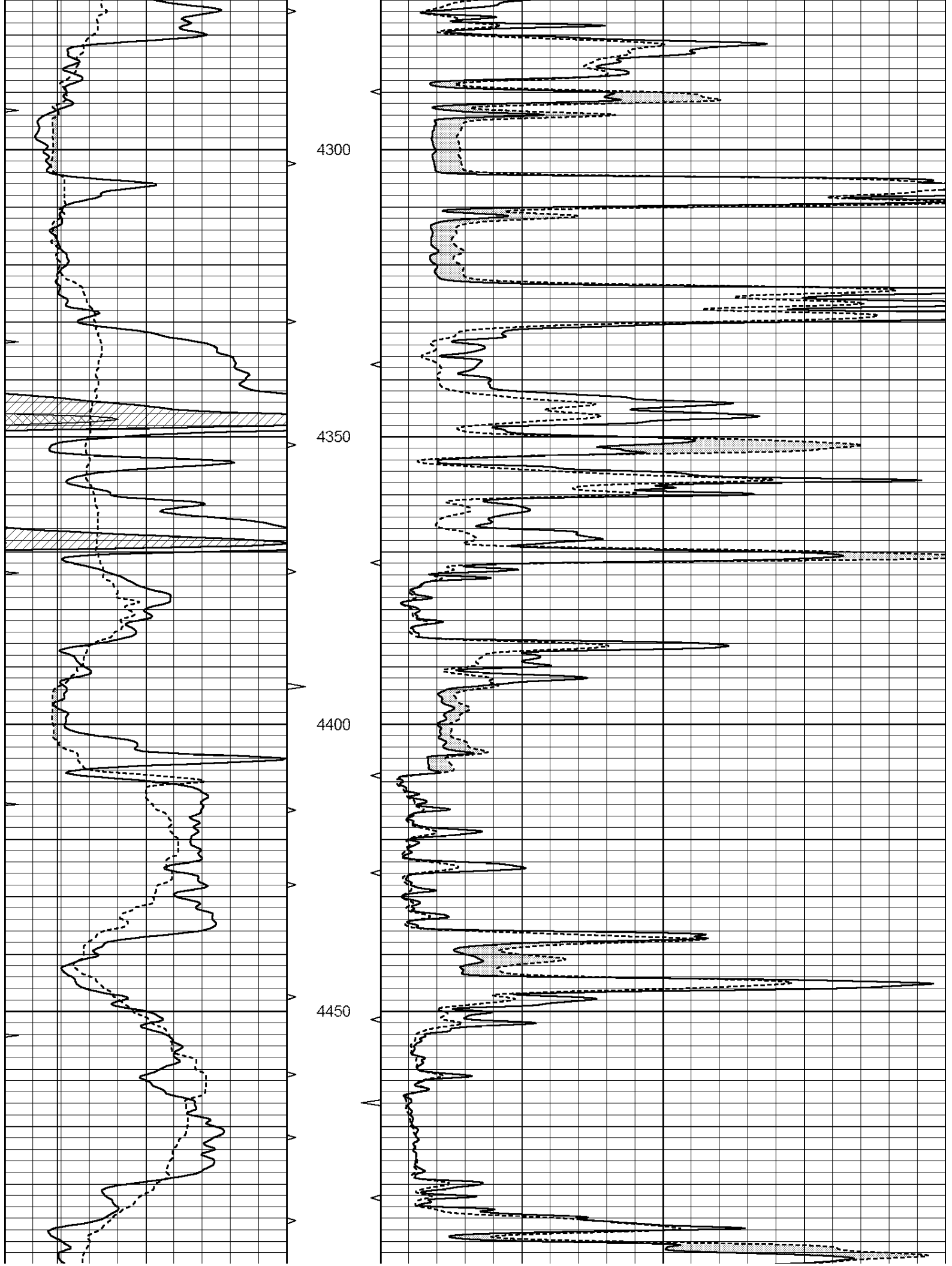
SUPERIOR
Hays,
Kansas

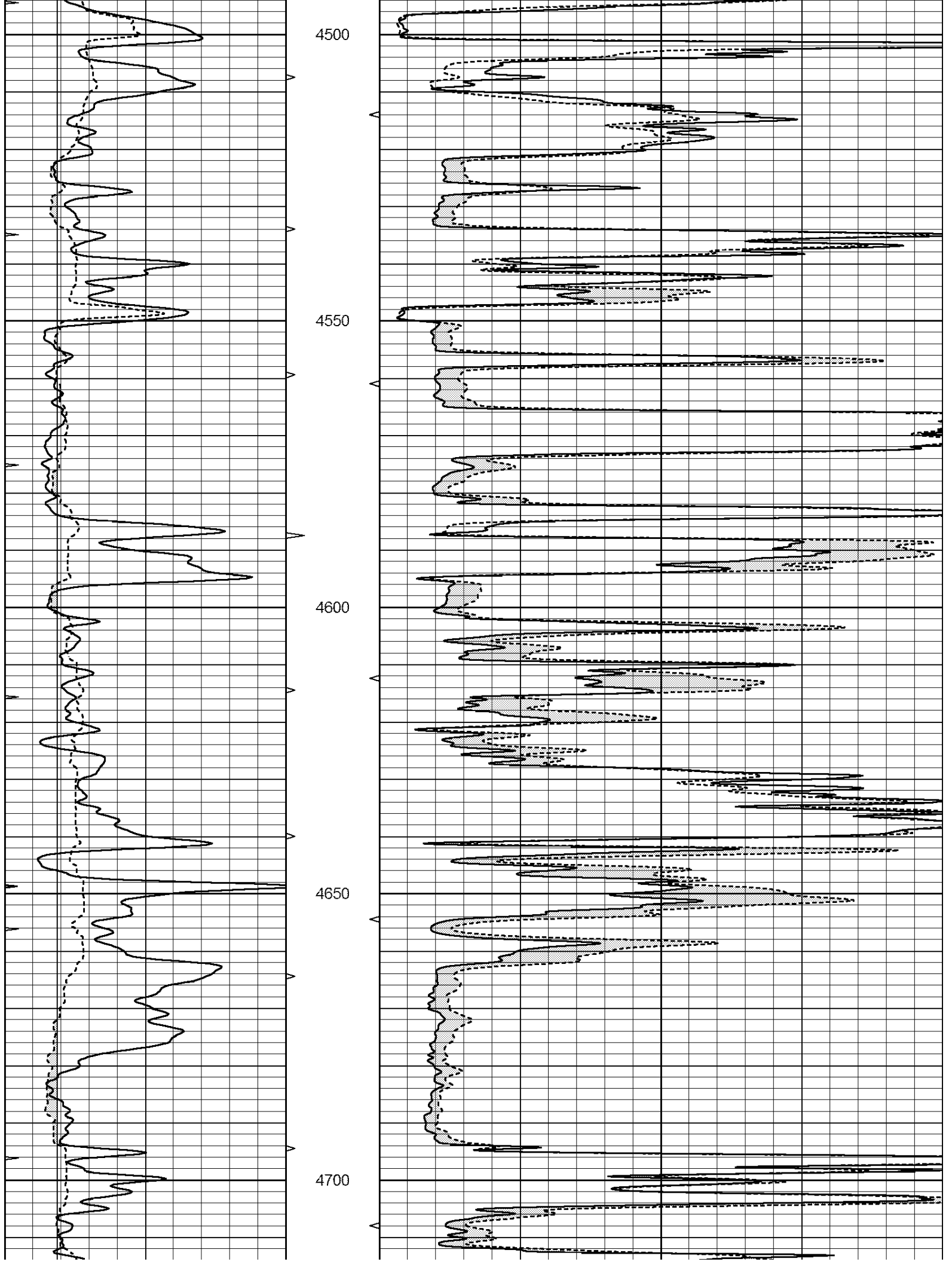
MAIN SECTION

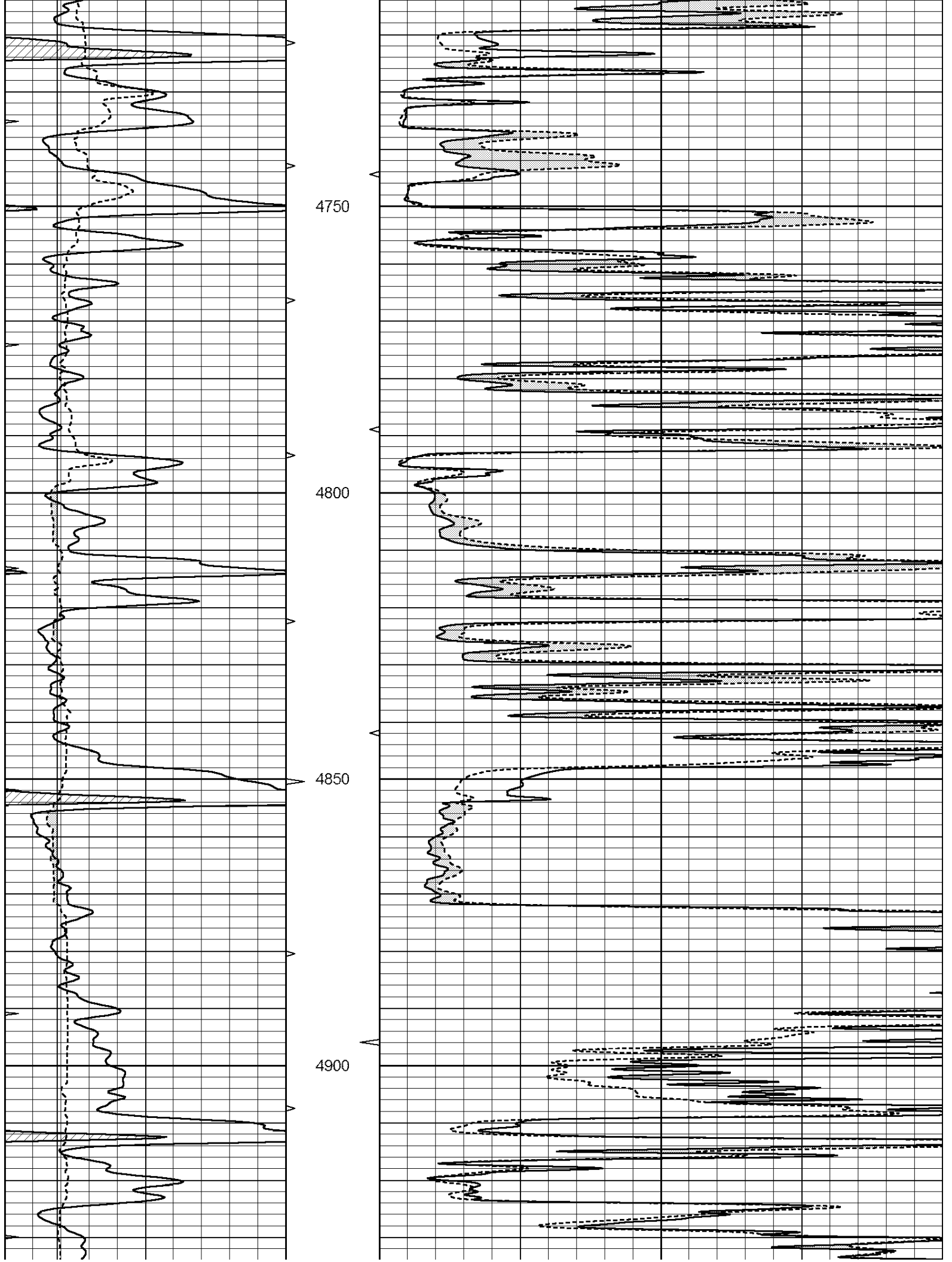
Database File: 409445pe.db
 Dataset Pathname: pass7.4
 Presentation Format: micro
 Dataset Creation: Thu Aug 02 10:55:36 2012
 Charted by: Depth in Feet scaled 1:240

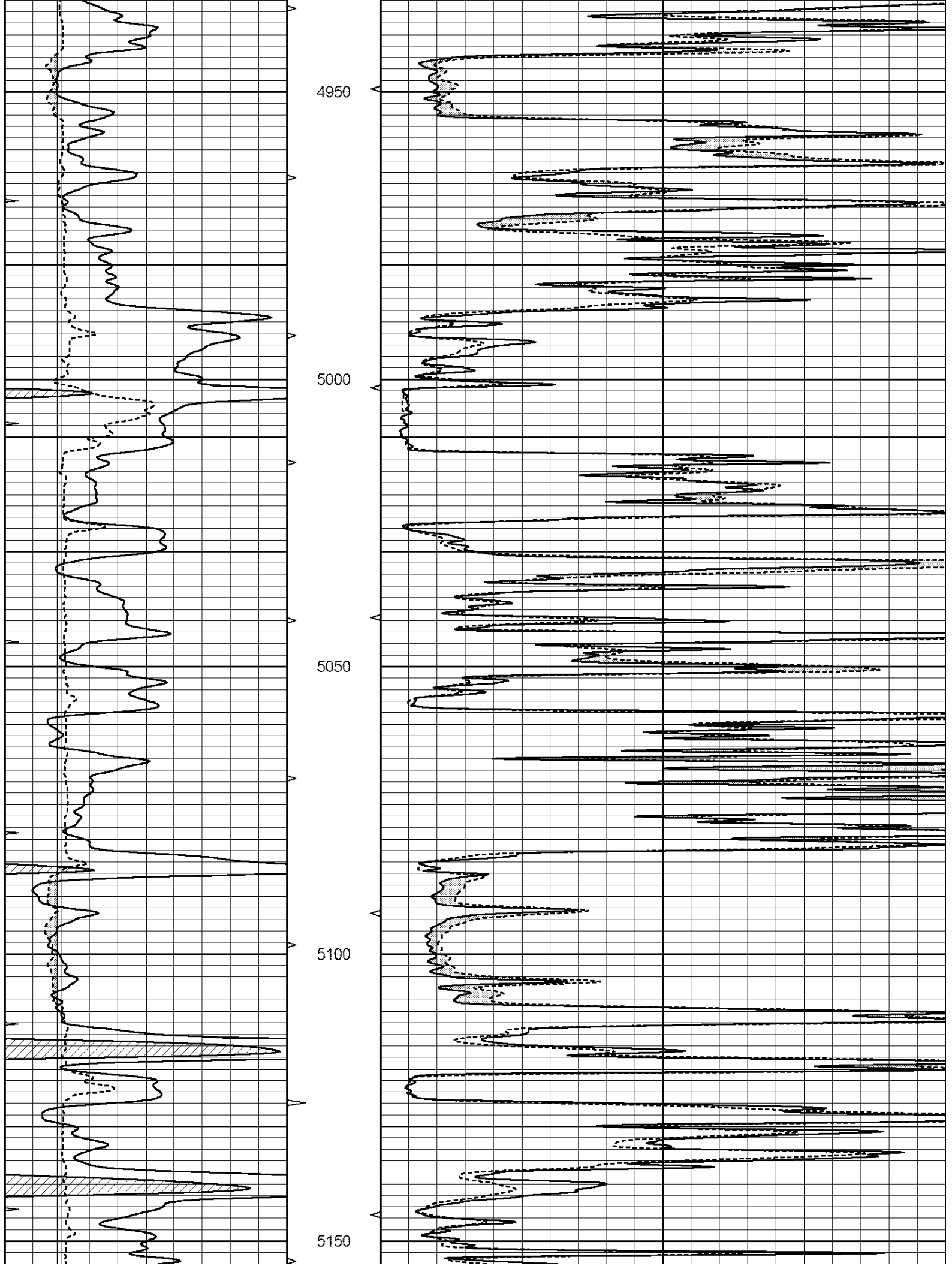
0	GAMMA RAY (GAPI)	150	ABHV	0	MEL1.5 (Ohm-m)	40
6	CALIPER (in)	16	10 (ft3)	0	MEL2.0 (Ohm-m)	40
0	MINMK	20	TBHV			
			0 (ft3)	10		

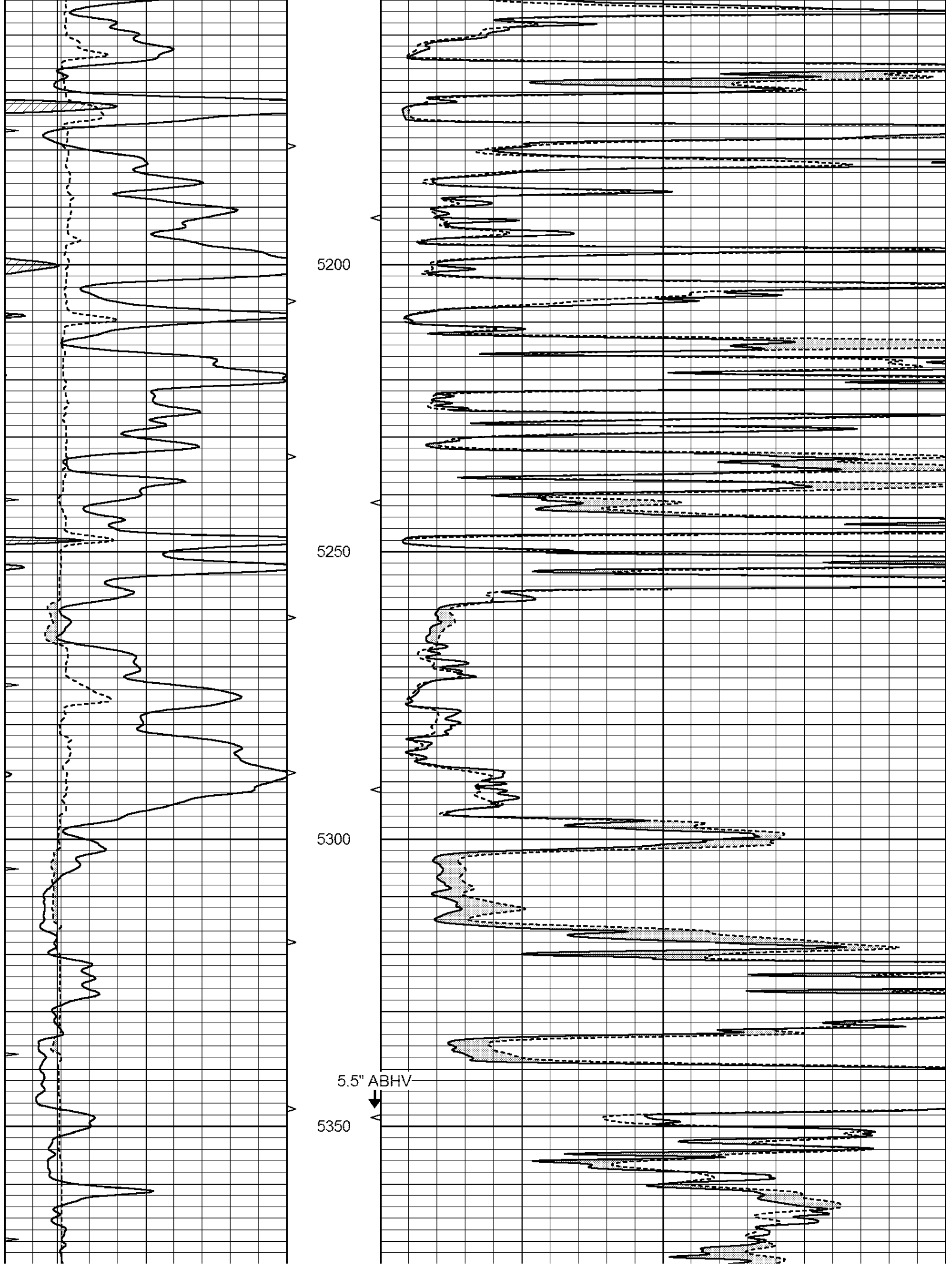












5200

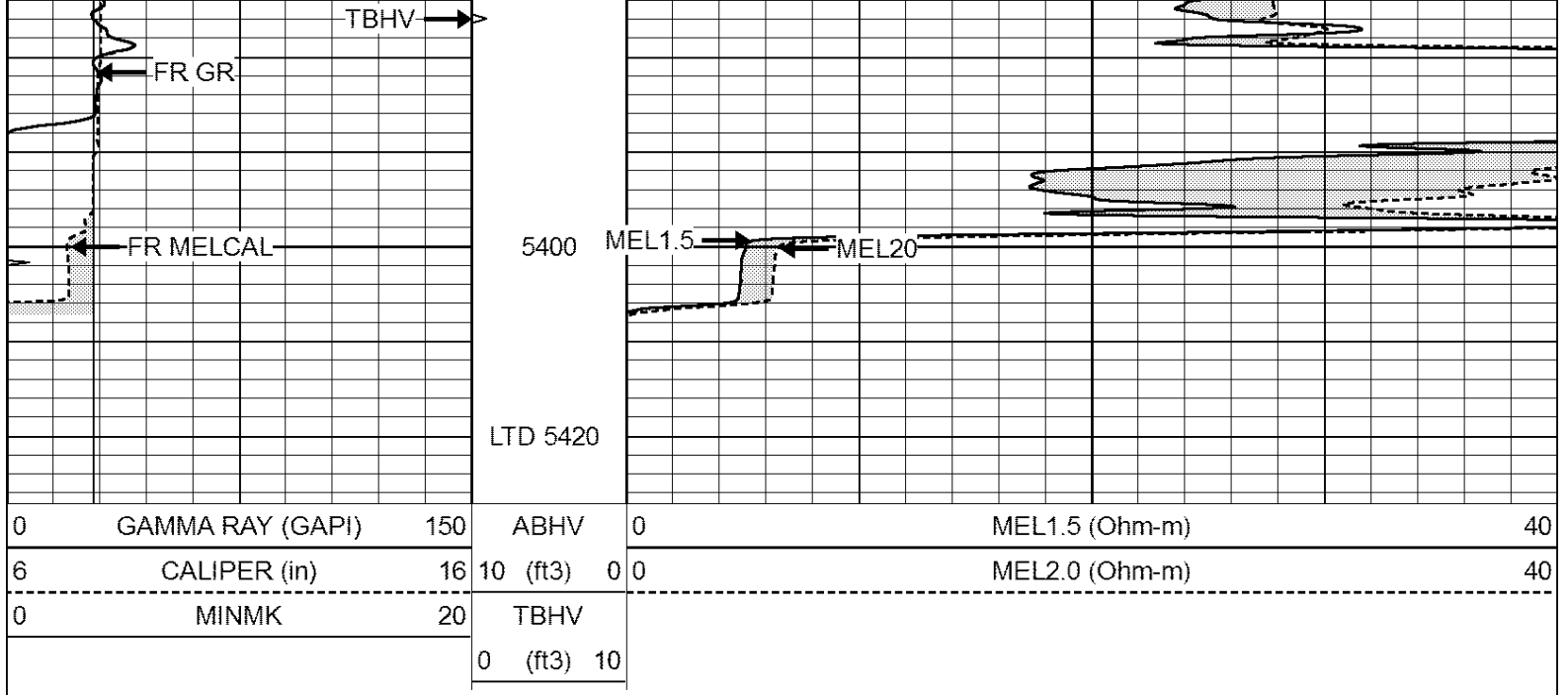
5250

5300

5350

5.5" ABHV



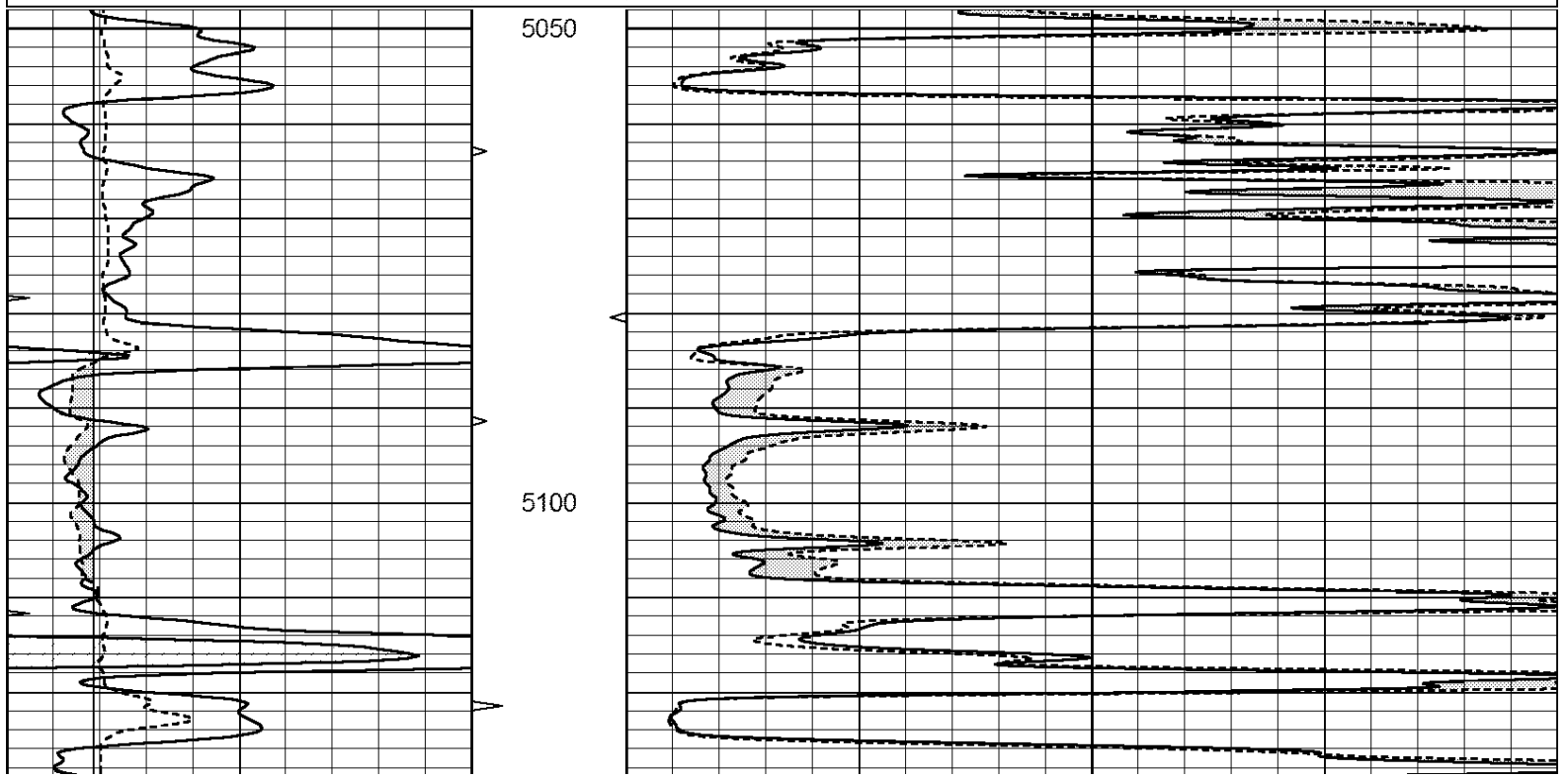


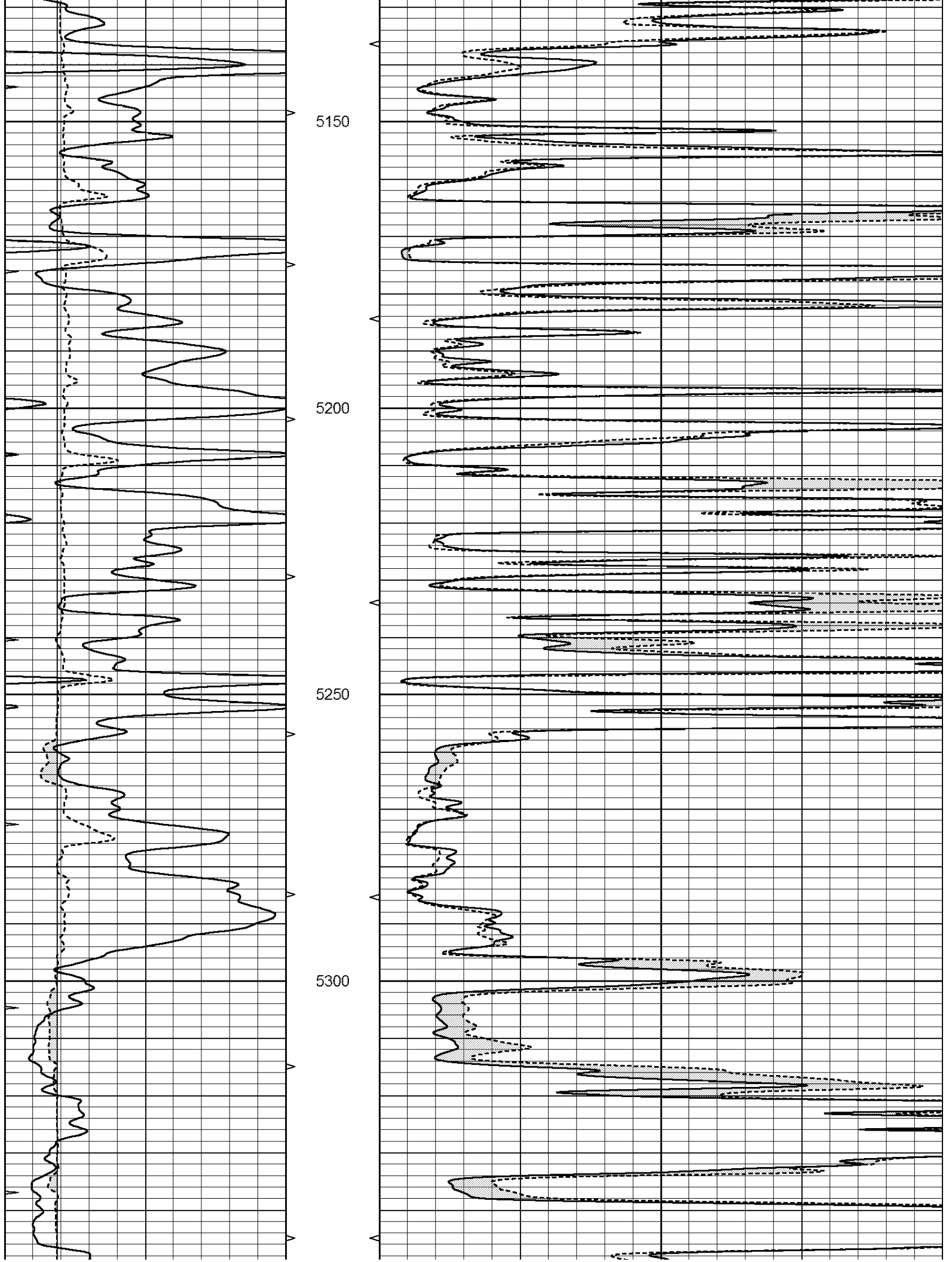
SUPERIOR
Hays,
Kansas

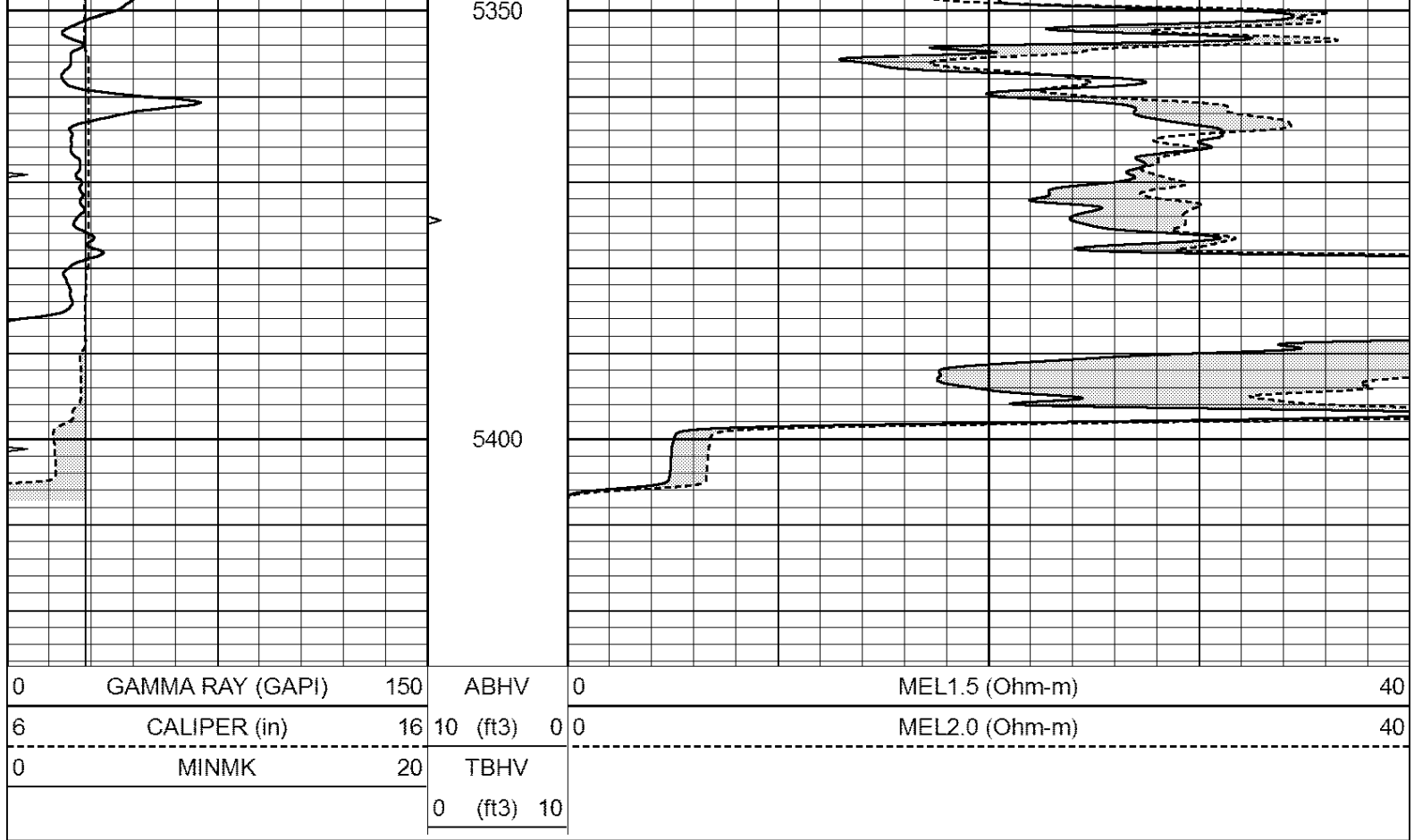
REPEAT SECTION

Database File: 409445pe.db
 Dataset Pathname: pass6.3
 Presentation Format: micro
 Dataset Creation: Thu Aug 02 10:34:50 2012
 Charted by: Depth in Feet scaled 1:240

0	GAMMA RAY (GAPI)	150	ABHV	0	MEL1.5 (Ohm-m)	40
6	CALIPER (in)	16	10 (ft3)	0	MEL2.0 (Ohm-m)	40
0	MINMK	20	TBHV			
			0 (ft3)	10		







Calibration Report

Database File: 409445pe.db
 Dataset Pathname: pass7.4
 Dataset Creation: Thu Aug 02 10:55:36 2012

MICRO Calibration Report

Serial Number:	MICRO5	
Tool Model:	PROBE	
Performed:	Thu Aug 02 08:51:55 2012	
Caliper Calibration:	Gain=3.572	Offset=-6.120
References	Low Cal	High Cal
Readings	7.900	15.000
	3.925	5.913
1.5" Calibration:	Gain=36.000	Offset=0.000
References	Low Cal	High Cal
Readings	0.000	20.000
	-0.002	0.981
2" Calibration:	Gain=38.000	Offset=0.000
References	Low Cal	High Cal
Readings	0.000	20.000
	0.002	0.898

Gamma Ray Calibration Report

Serial Number:	GR4	
Tool Model:	OPEN	
Performed:	Mon Jul 30 21:53:37 2012	
Calibrator Value:	200.0	GAPI

Background Reading:

0.0

cps

Calibrator Reading:

189.0

cps

Sensitivity:

2.0000

GAPI/cps