



SUPERIOR
Hays,
Kansas

**DUAL INDUCTION
LOG**

Company VINCENT OIL CORPORATION
Well LOKKEN #1-29
Field WILDCAT
County FORD
State KANSAS

Company VINCENT OIL CORPORATION
Well LOKKEN #1-29
Field WILDCAT
County FORD State KANSAS

Location: API # : 15-057-20823-0000
820' FNL & 540' FEL
SEC 29 TWP 29S RGE 24W
Permanent Datum GROUND LEVEL Elevation 2564
Log Measured From KELLY BUSHING 10' A.G.L.
Drilling Measured From KELLY BUSHING
Other Services
CDL/CNL/PE
MEL/SONIC
Elevation
K.B. 2574
D.F. 2572
G.L. 2564

Date	8/2/12
Run Number	ONE
Depth Driller	5420
Depth Logger	5420
Bottom Logged Interval	5418
Top Log Interval	00
Casing Driller	8 5/8"@644'
Casing Logger	644
Bit Size	7 7/8"
Type Fluid in Hole	CHEMICAL MUD
Density / Viscosity	8.9/55
pH / Fluid Loss	9.0/14.8
Source of Sample	FLOWLINE
Rm @ Meas. Temp	.450@90F
Rmt @ Meas. Temp	.338@90F
Rmc @ Meas. Temp	.540@90F
Source of Rmf / Rmc	MEASUREMENT
Rm @ BHT	.314@129F
Time Circulation Stopped	3 HOURS
Time Logger on Bottom	6:45 A.M.
Maximum Recorded Temperature	129F
Equipment Number	4010
Location	HAYS, KANSAS
Recorded By	JEFF LUEBBERS
Witnessed By	JIM HALL

<<< Fold Here >>>

All interpretations are opinions based on inferences from electrical or other measurements and we cannot and do not guarantee the accuracy or correctness of any interpretation, and we shall not, except in the case of gross or willful negligence on our part, be liable or responsible for any loss, costs, damages, or expenses incurred or sustained by anyone resulting from any interpretation made by any of our officers, agents or employees. These interpretations are also subject to our general terms and conditions set out in our current Price Schedule.

Comments

THANK YOU FOR USING SUPERIOR WELL SERVICE HAYS, KANSAS (785) 628-6395
DIRECTIONS
BLOOM, KS. & HWY 54, W. ON HWY 54 TO "CLARK COUNTY RD.9", 2 1/2N., W. INTO



SUPERIOR
Hays,
Kansas

MAIN SECTION

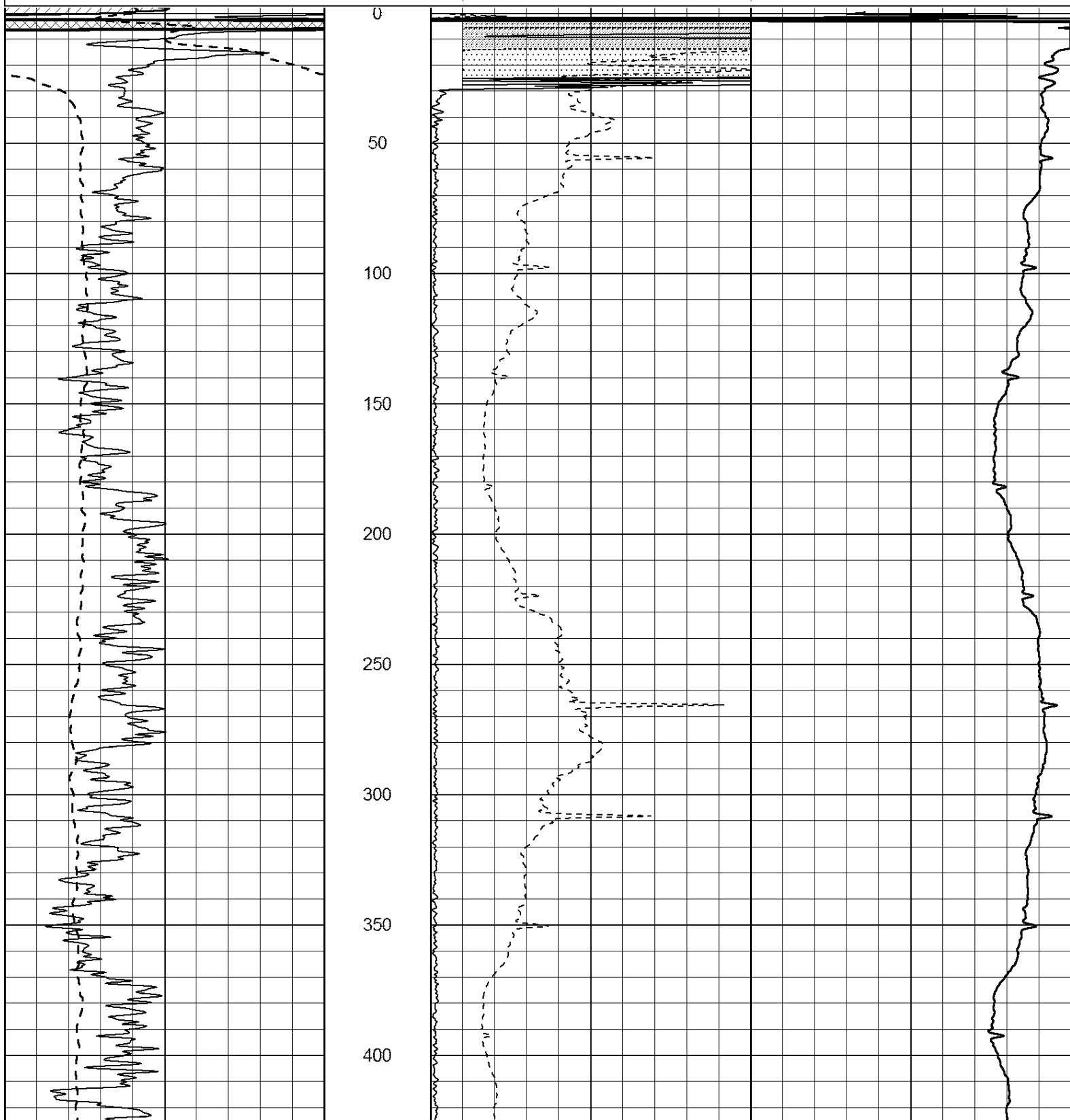
Database File: 409445pe.db
 Dataset Pathname: pass3.8
 Presentation Format: dil2
 Dataset Creation: Thu Aug 02 08:46:26 2012
 Charted by: Depth in Feet scaled 1:600

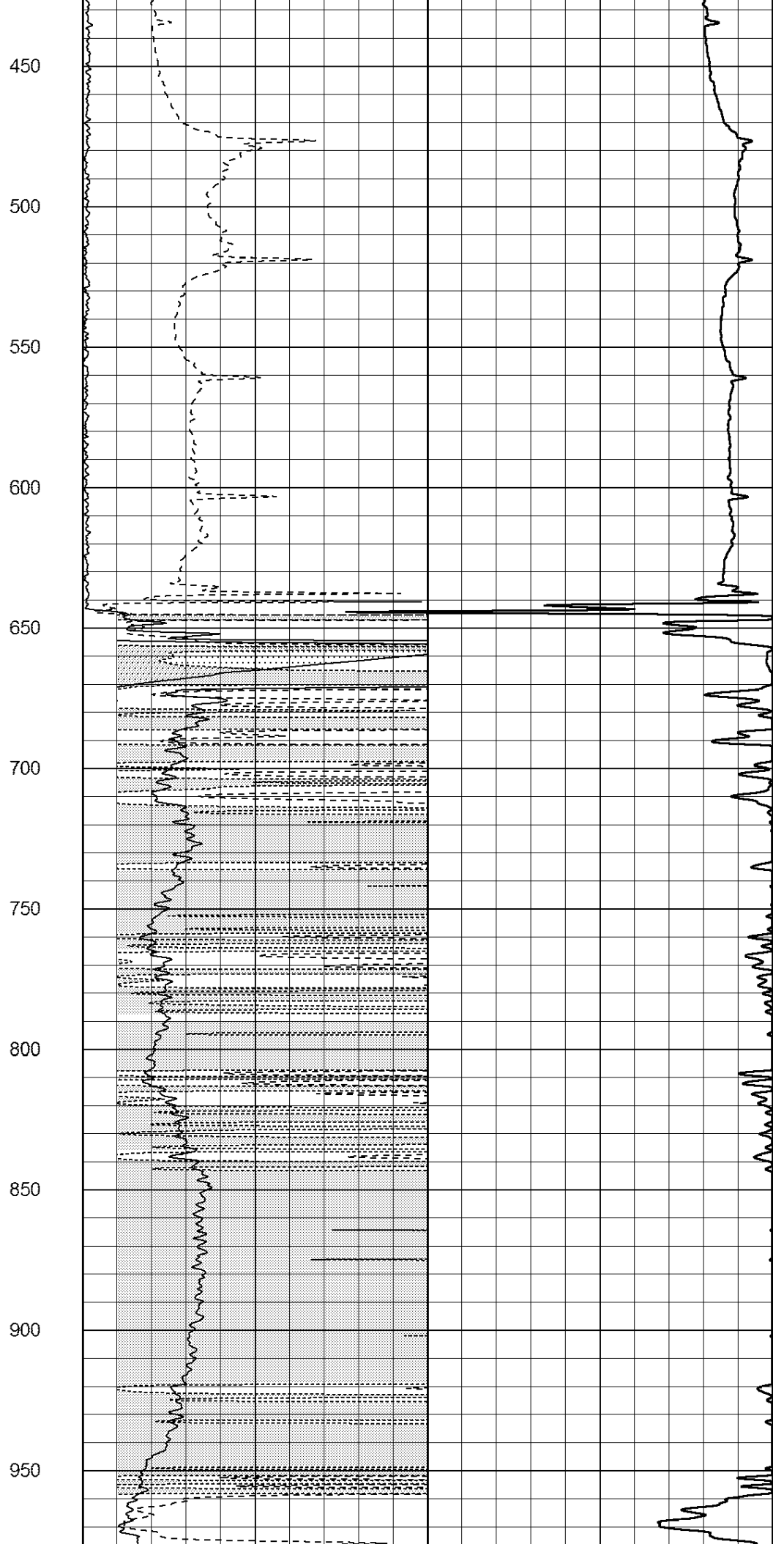
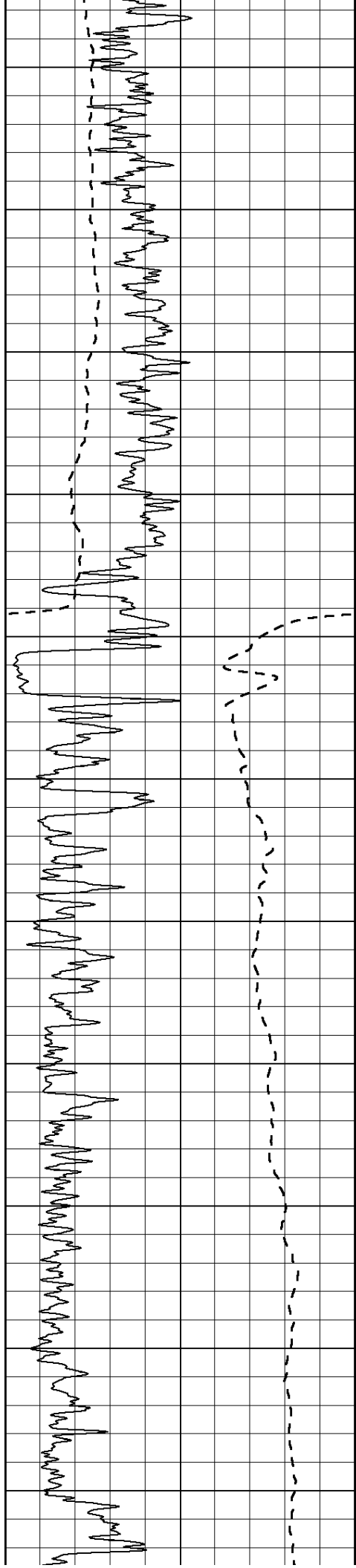
0	Gamma Ray (GAPI)	150
-100	SP (mV)	100

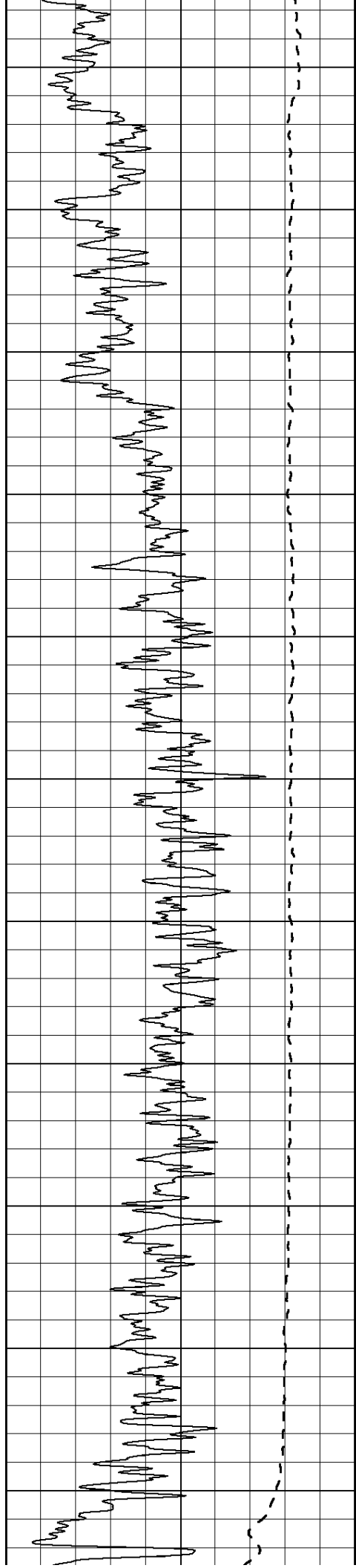
0	RLL3 (Ohm-m)	50
0	RILD (Ohm-m)	50

1000	CILD (mmho/m)	0
------	---------------	---

50	RILD X10 (Ohm-m)	500
50	RLL3 X10 (Ohm-m)	500







1000

1050

1100

1150

1200

1250

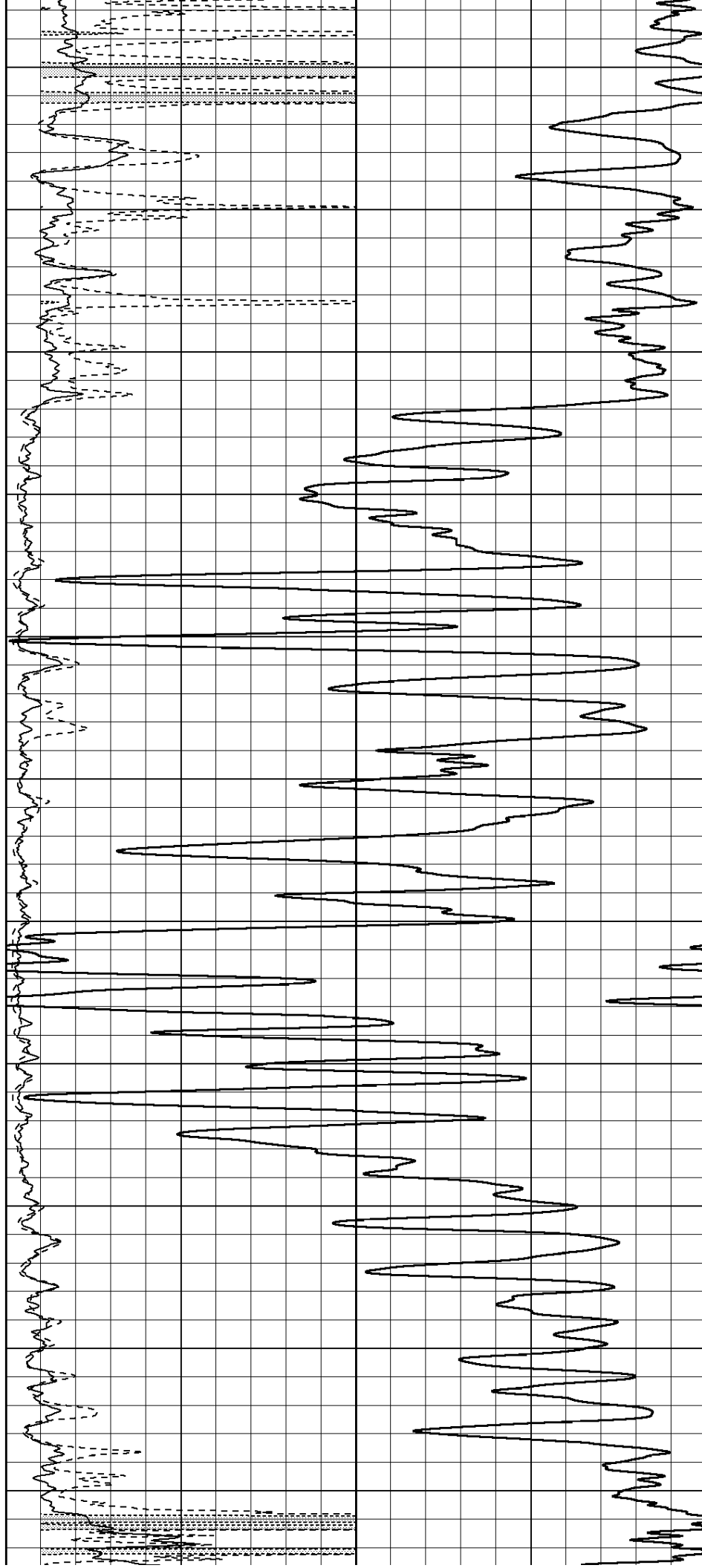
1300

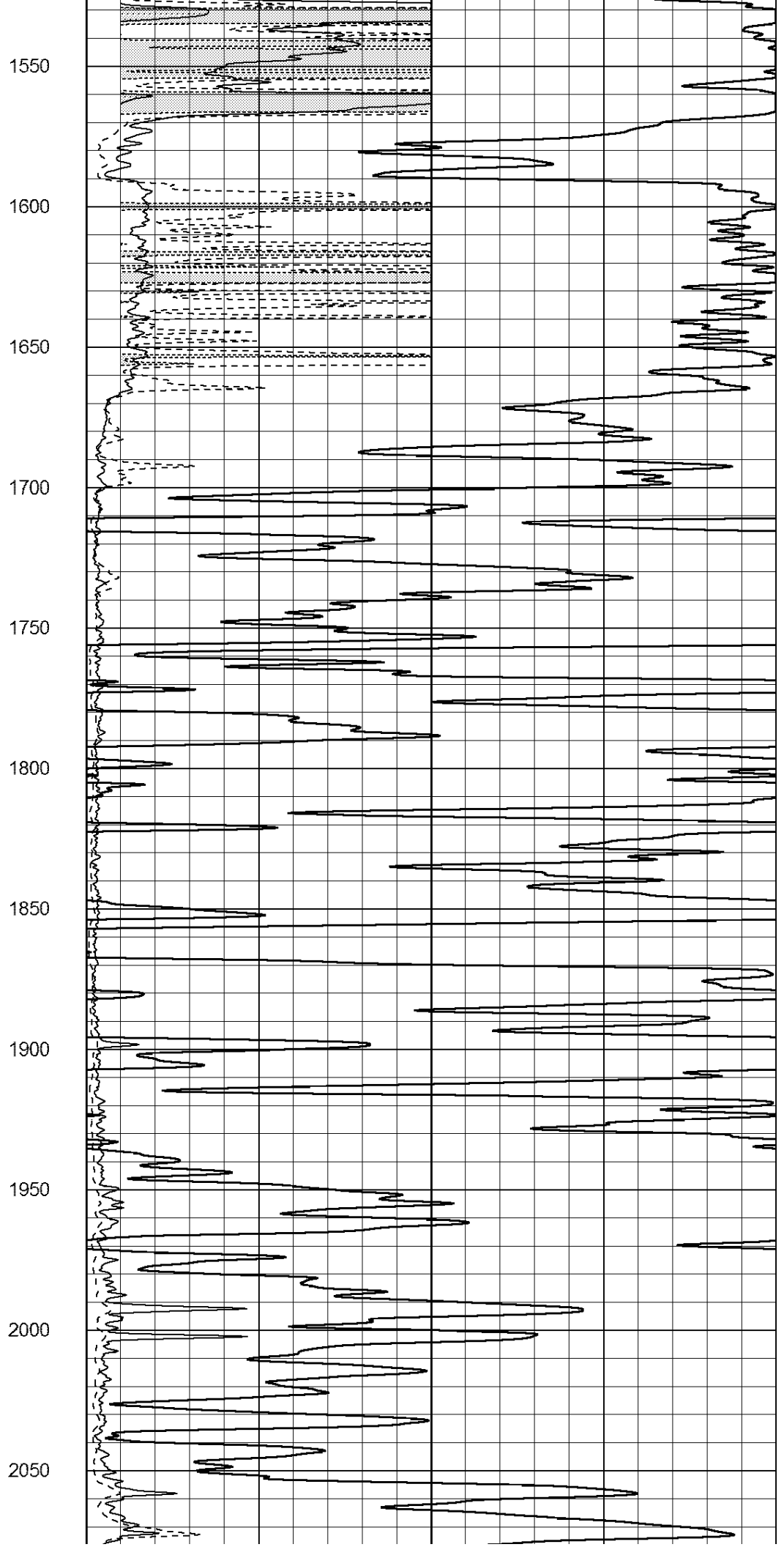
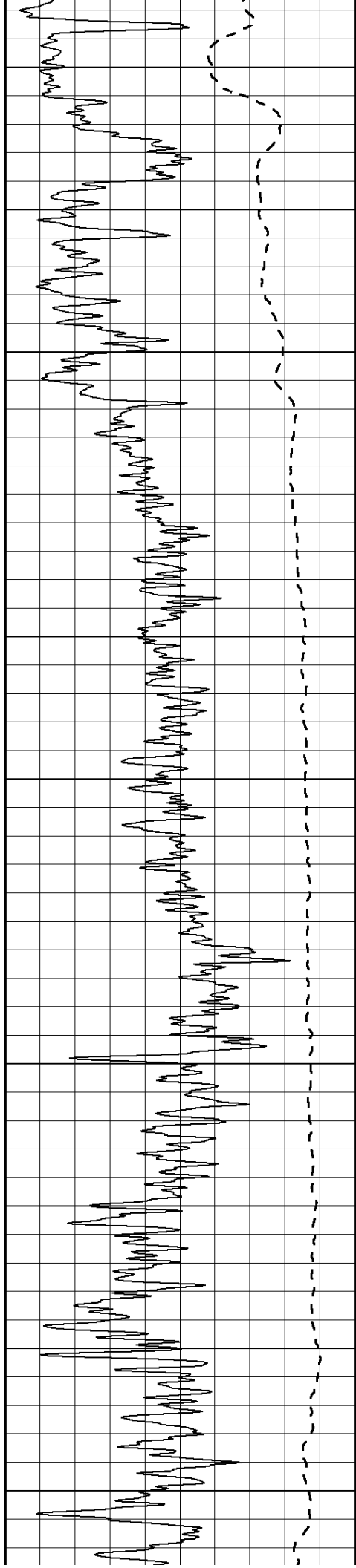
1350

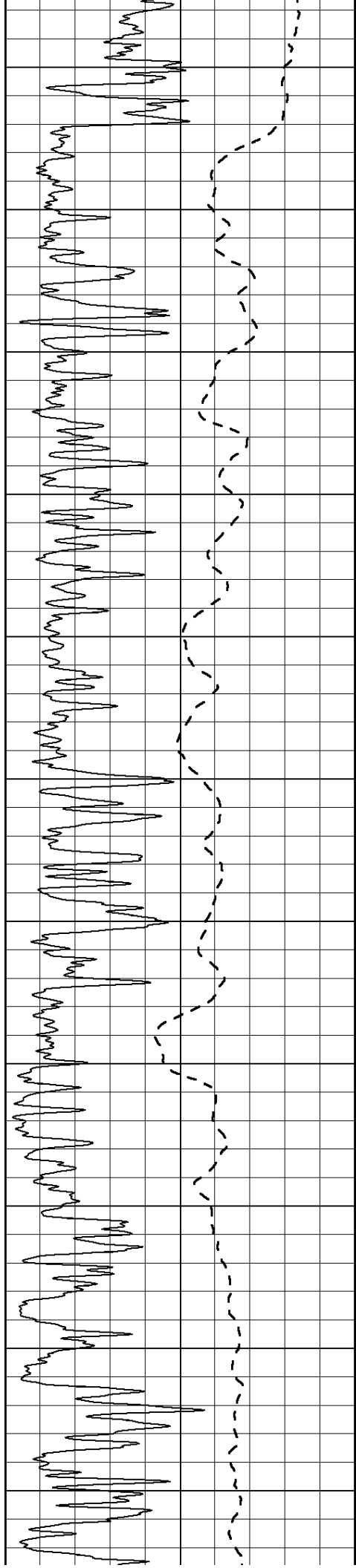
1400

1450

1500







2100

2150

2200

2250

2300

2350

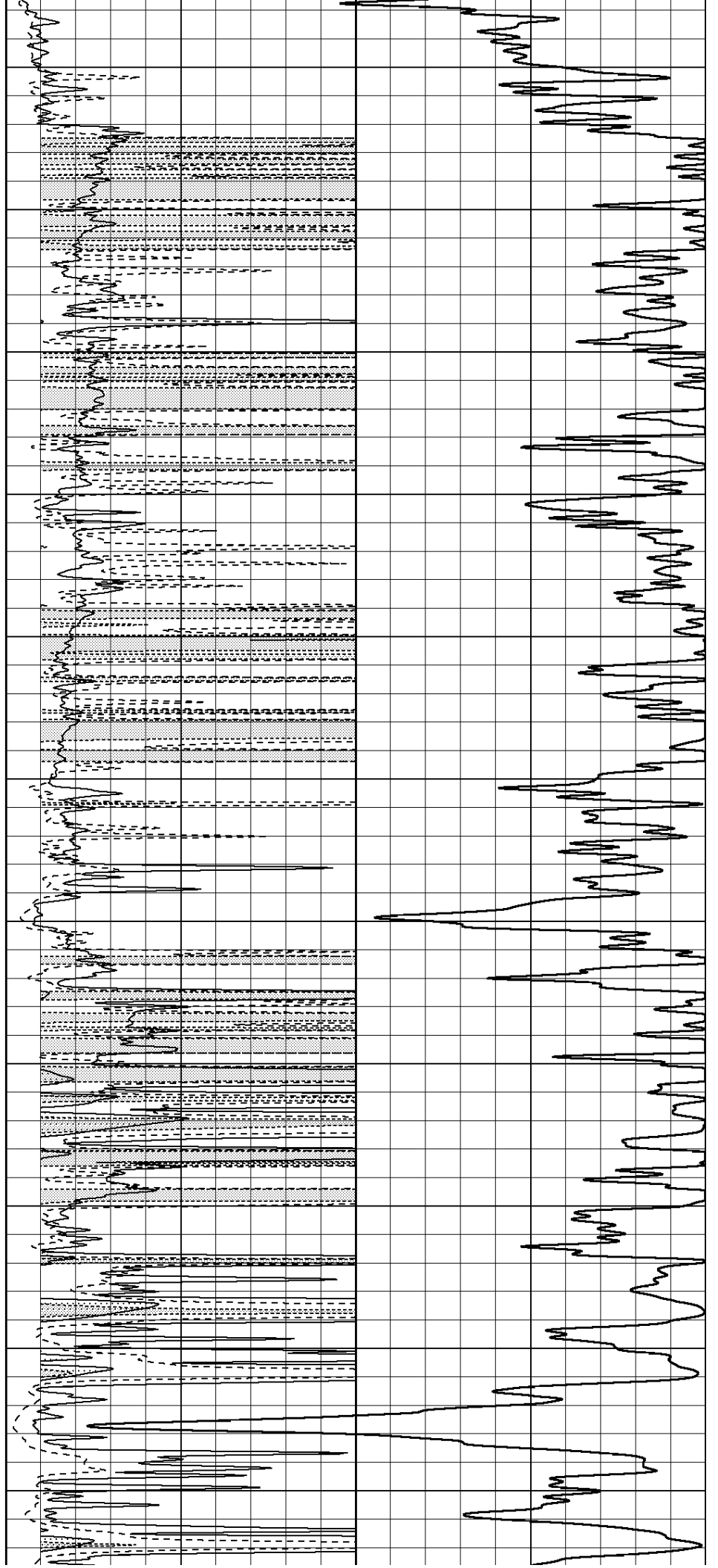
2400

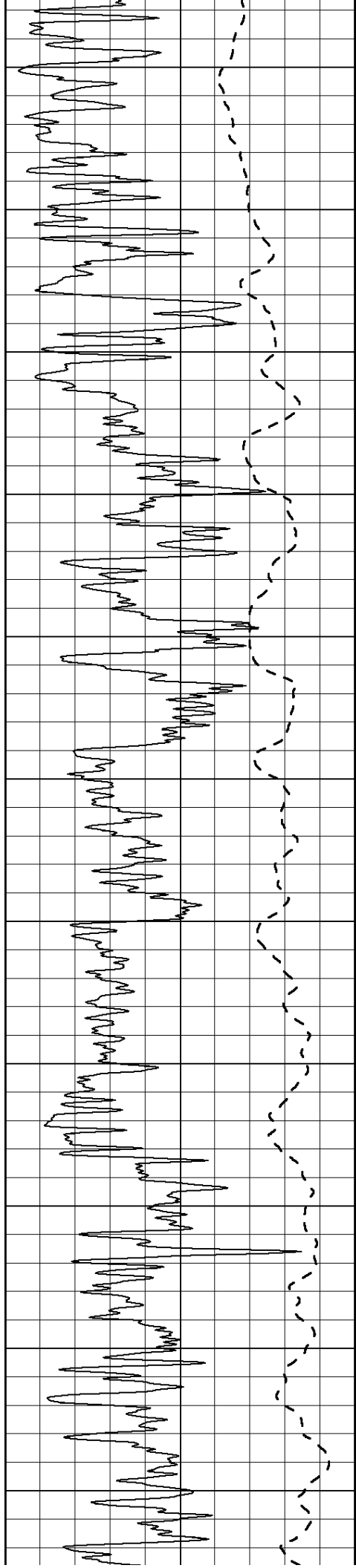
2450

2500

2550

2600





2650

2700

2750

2800

2850

2900

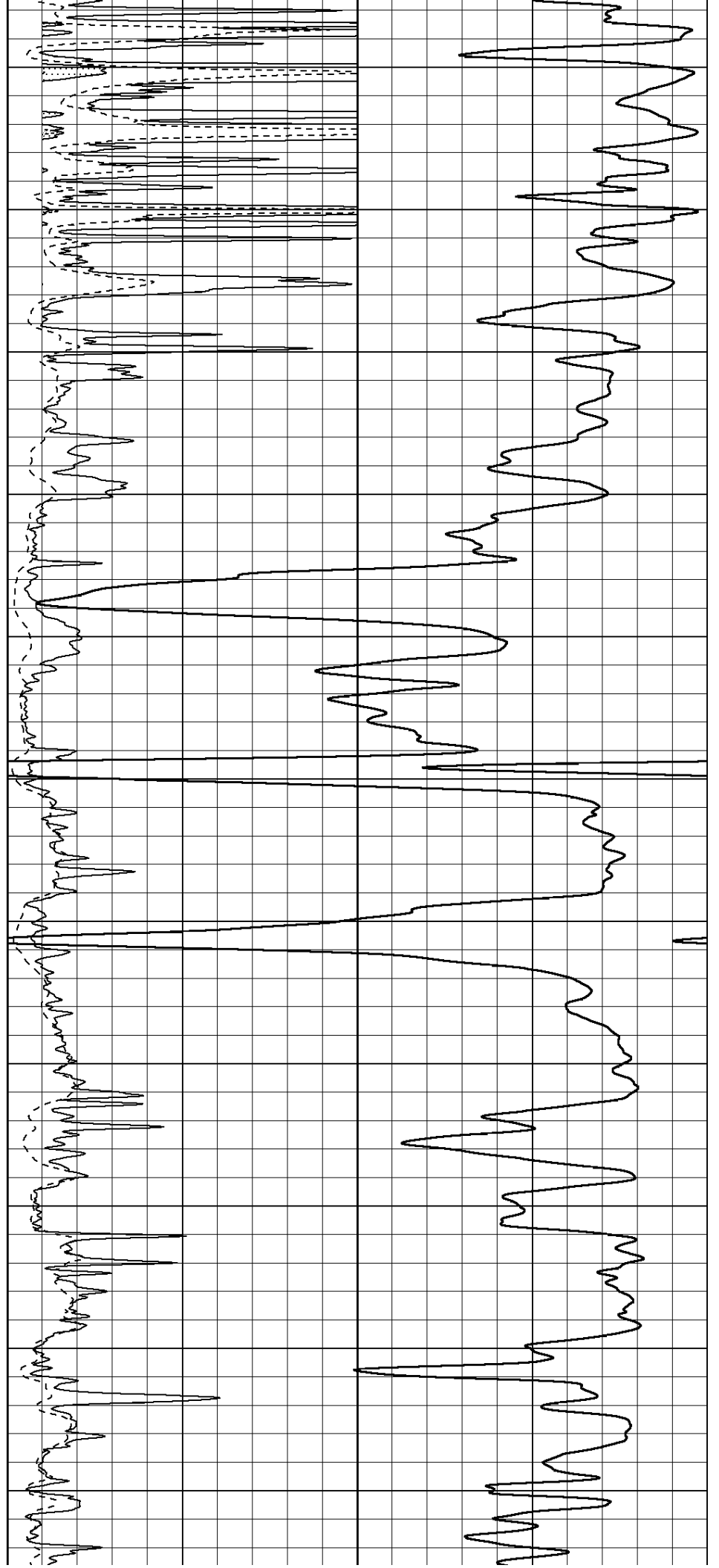
2950

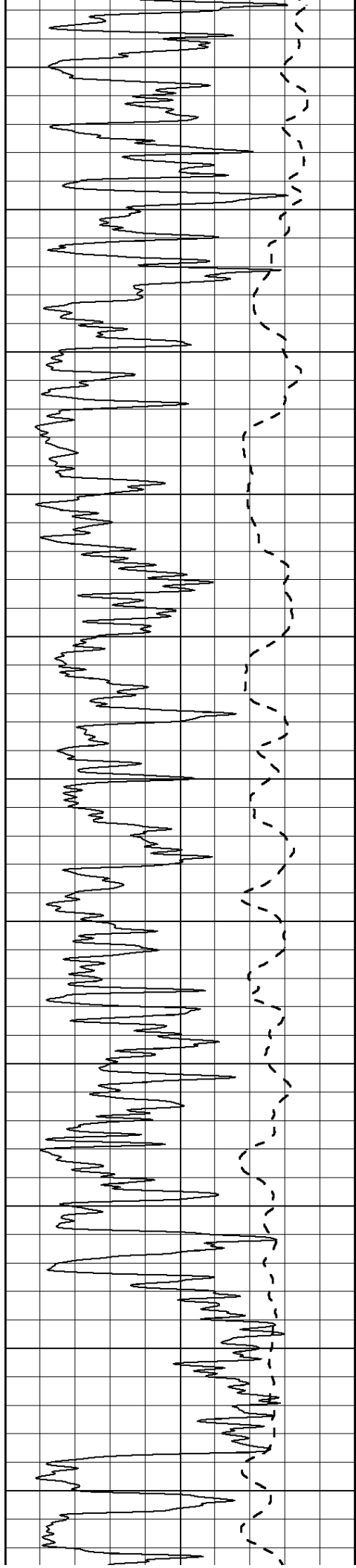
3000

3050

3100

3150





3200

3250

3300

3350

3400

3450

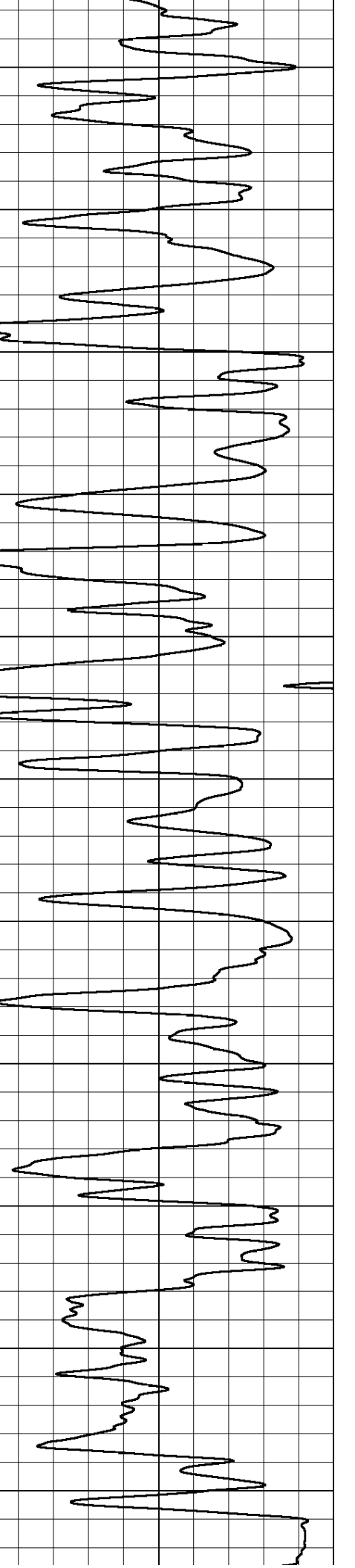
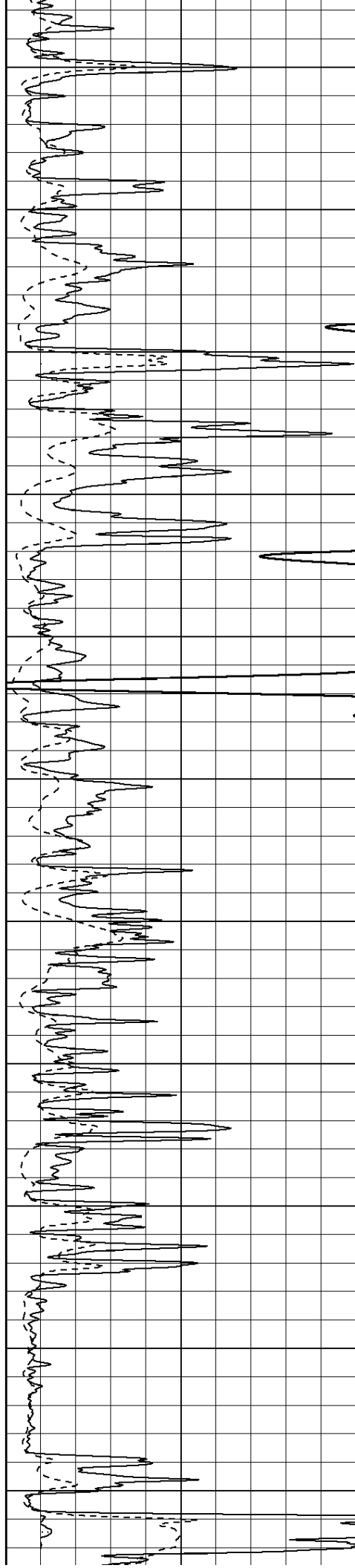
3500

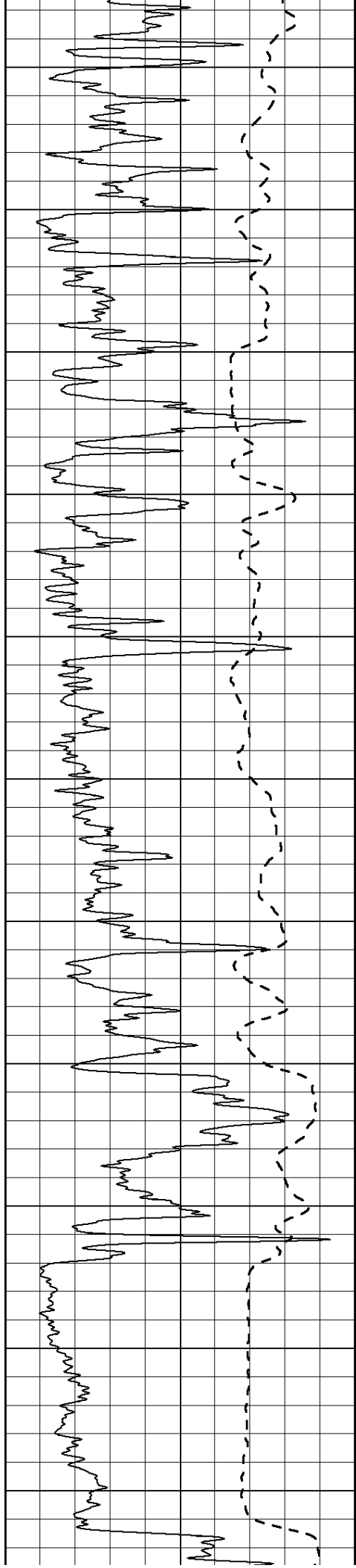
3550

3600

3650

3700





3750

3800

3850

3900

3950

4000

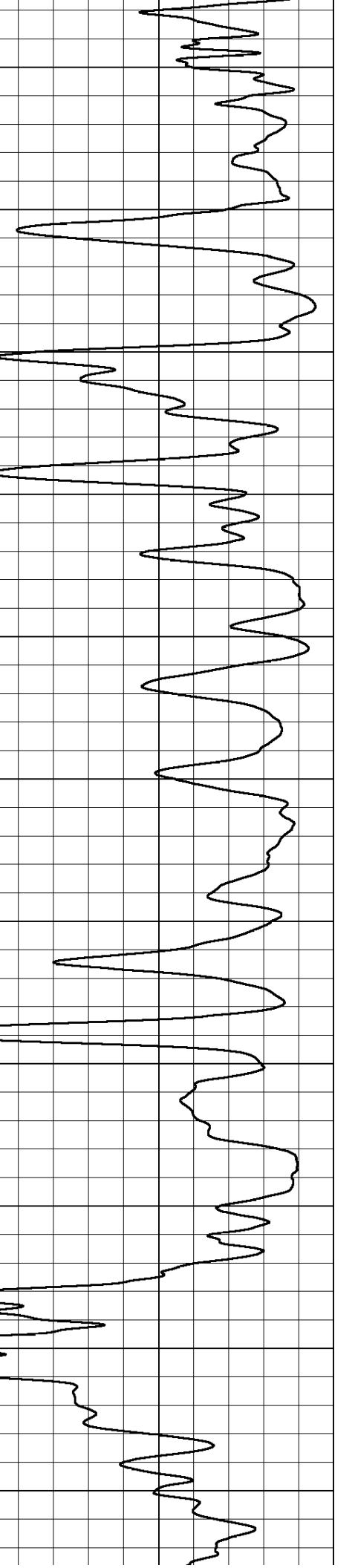
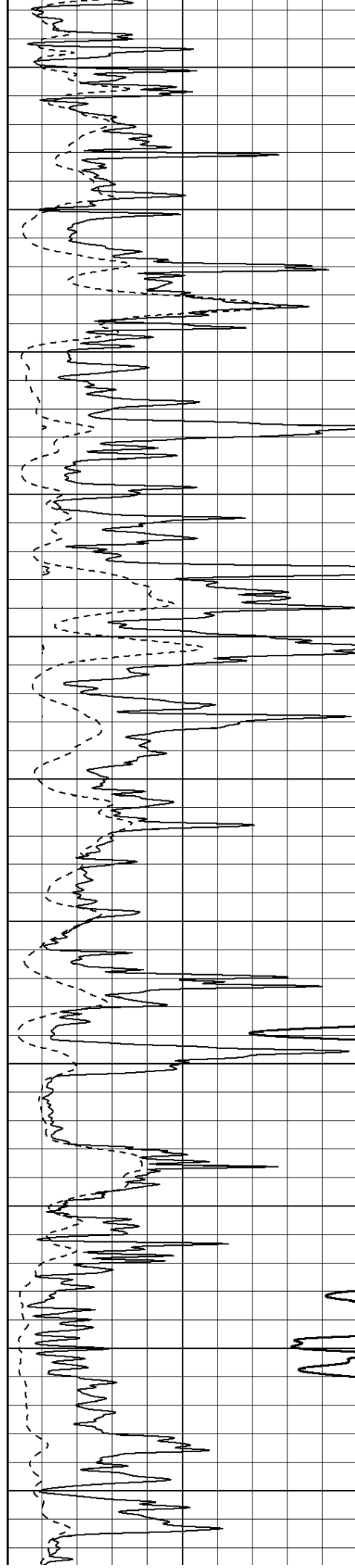
4050

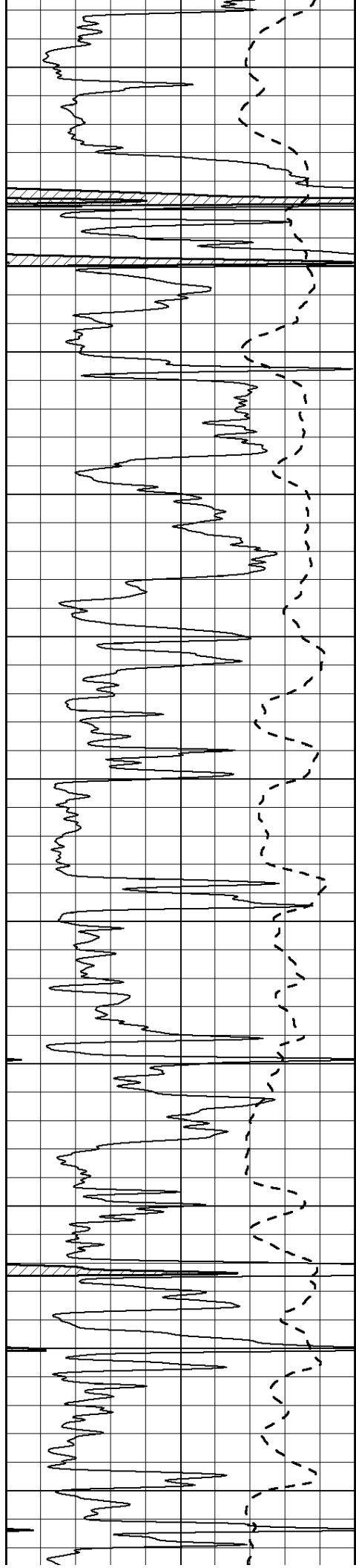
4100

4150

4200

4250





4300

4350

4400

4450

4500

4550

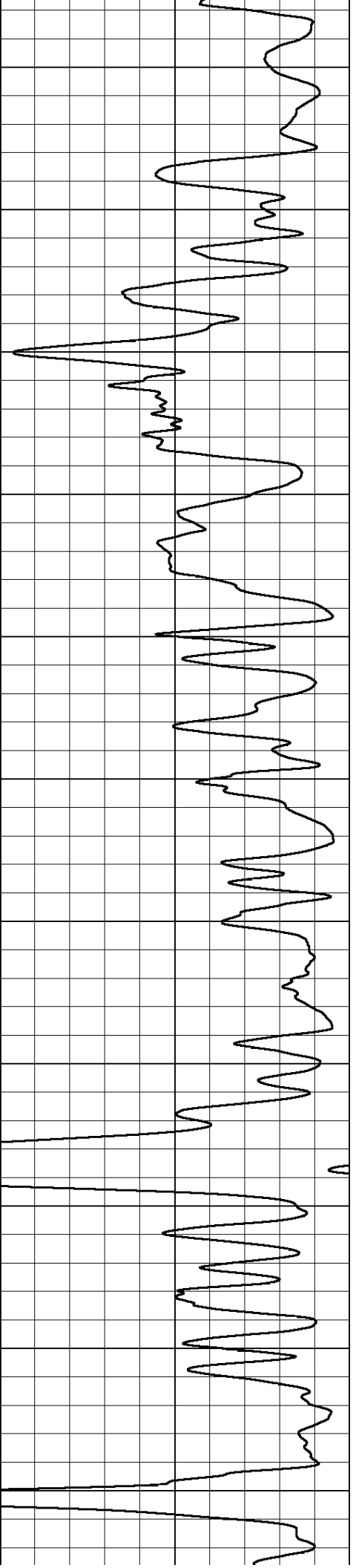
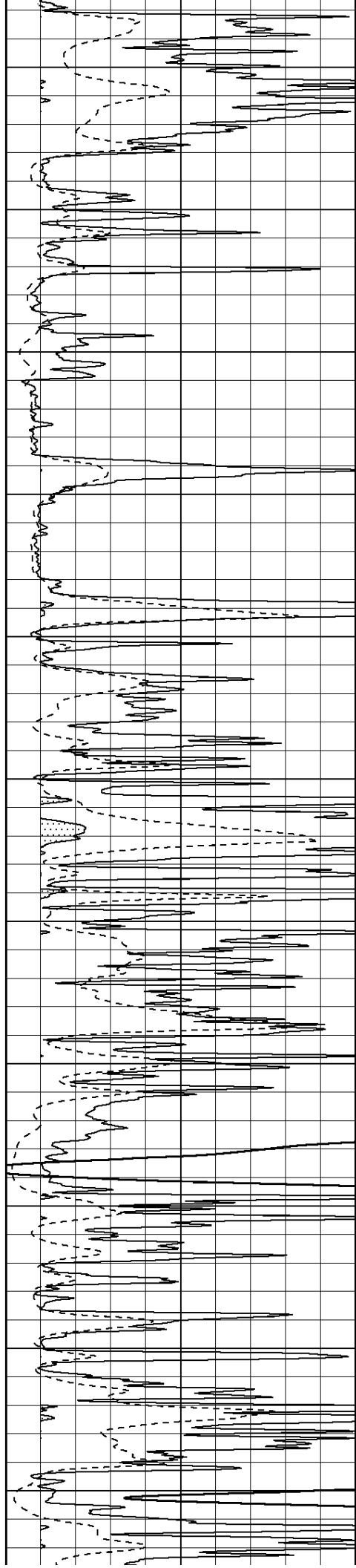
4600

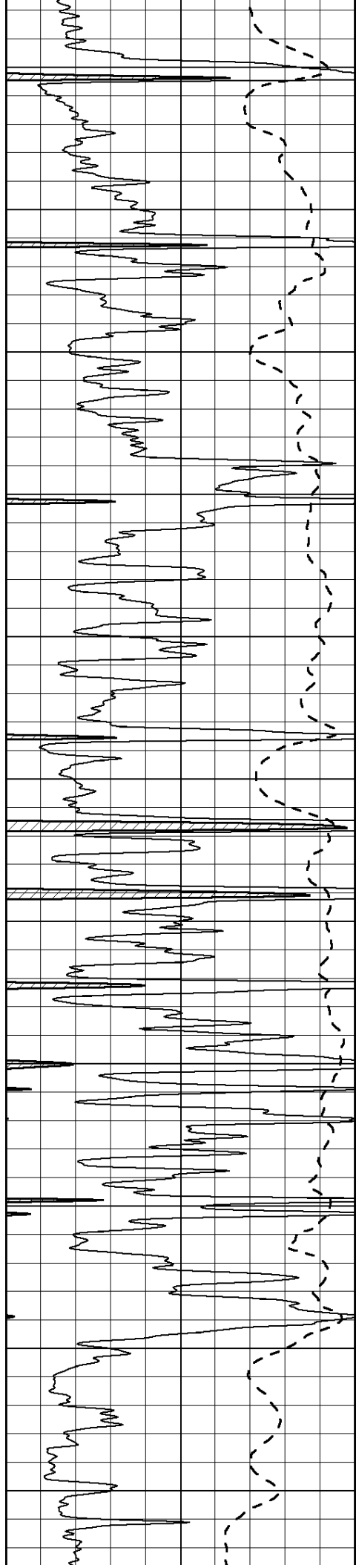
4650

4700

4750

4800





4850

4900

4950

5000

5050

5100

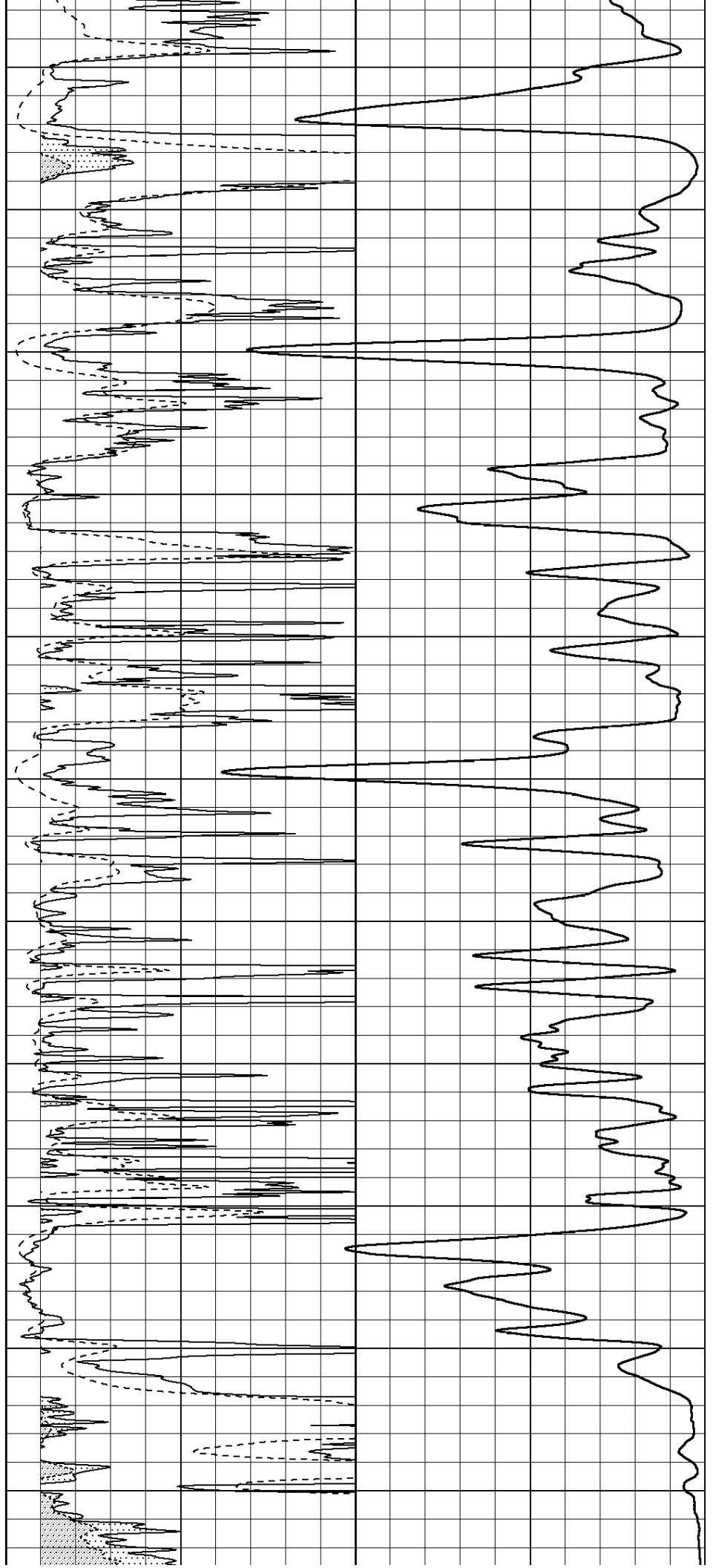
5150

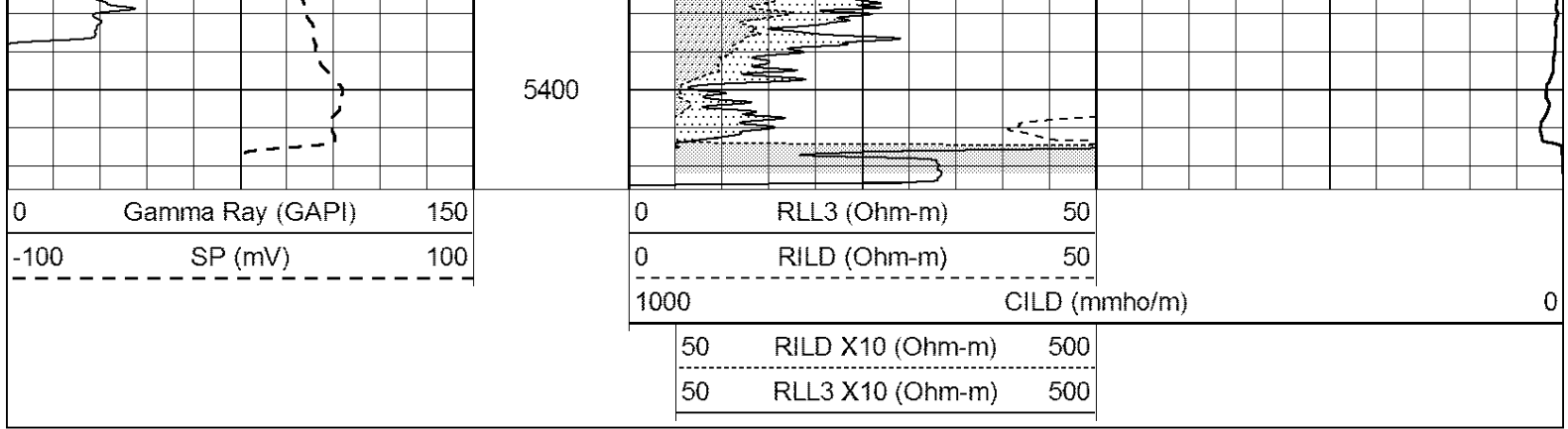
5200

5250

5300

5350



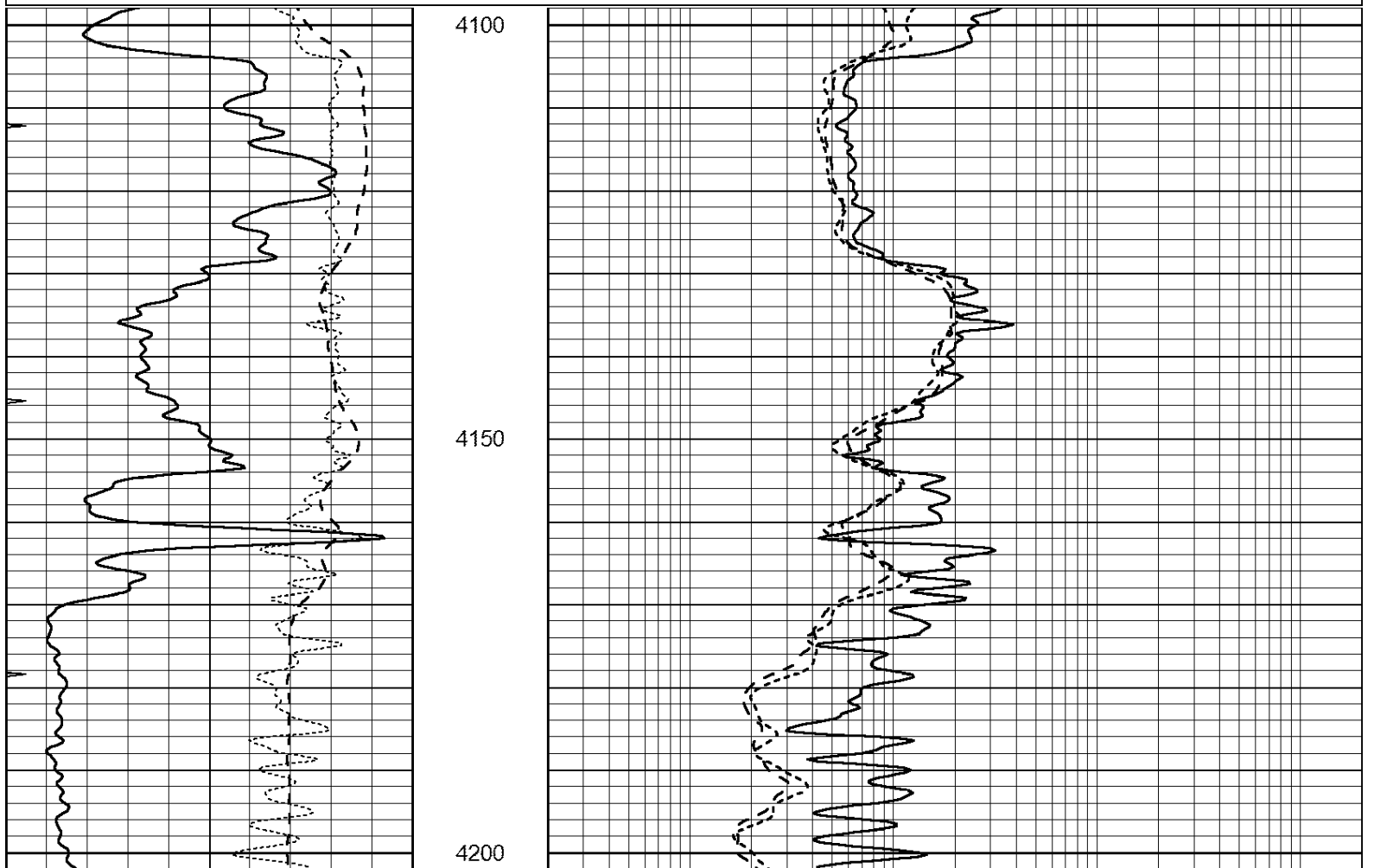


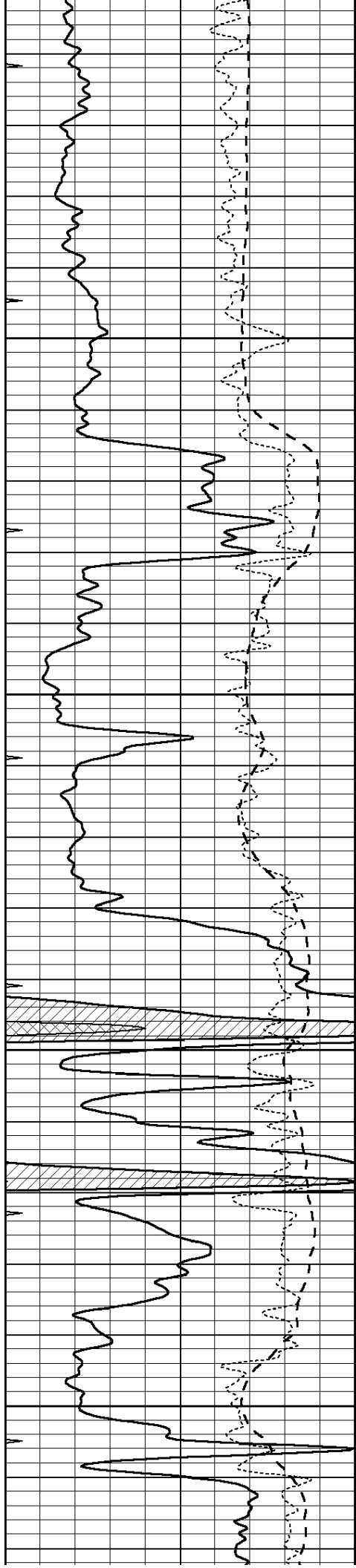
SUPERIOR
Hays,
Kansas

MAIN SECTION

Database File: 409445pe.db
 Dataset Pathname: pass3.8
 Presentation Format: dil
 Dataset Creation: Thu Aug 02 08:46:26 2012
 Charted by: Depth in Feet scaled 1:240

0	GAMMA RAY (GAPI)	150	0.2	SHALLOW GUARD (Ohm-m)	2000
-100	SP (mV)	100	0.2	DEEP INDUCTION (Ohm-m)	2000
-250	Rxo/Rt	50	0.2	MEDIUM INDUCTION (Ohm-m)	2000
0	MINMK	20			



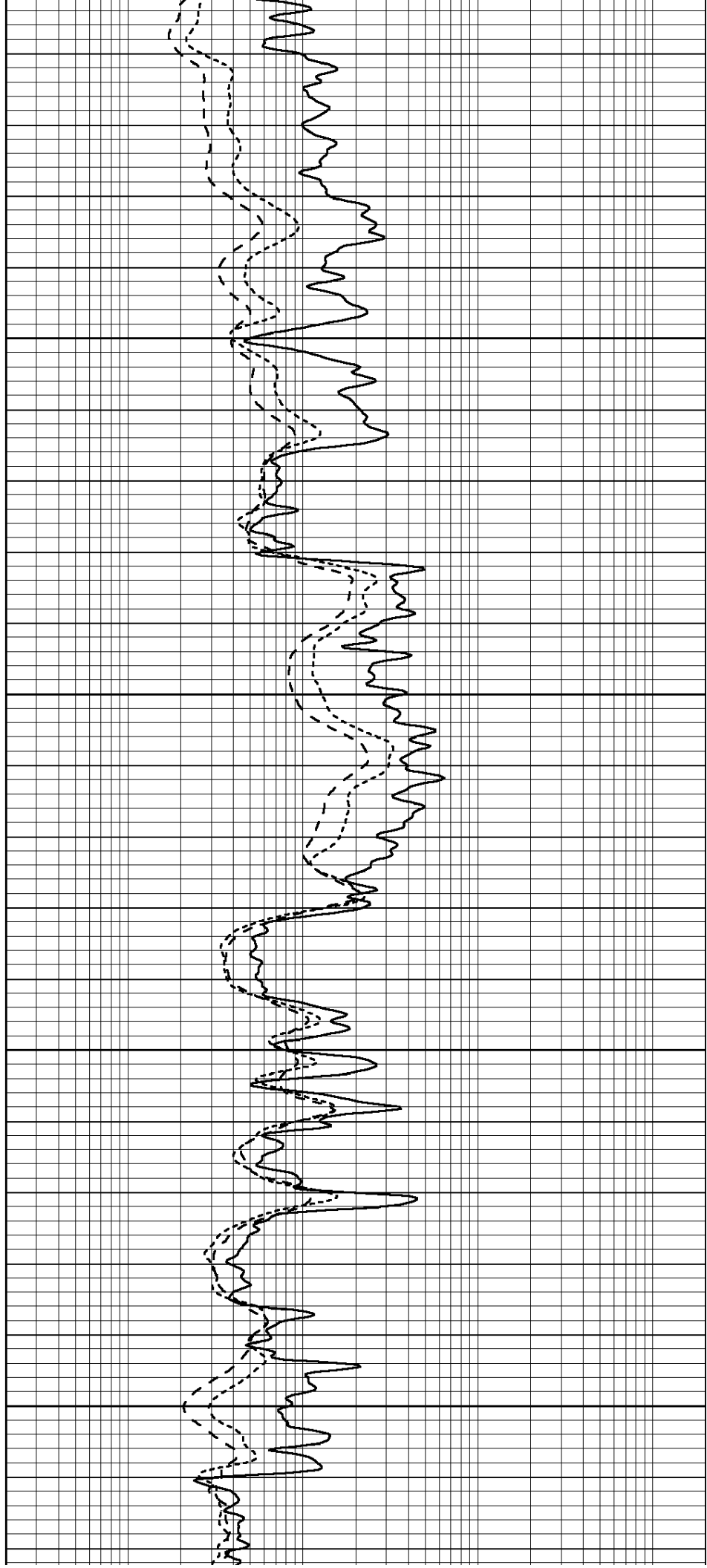


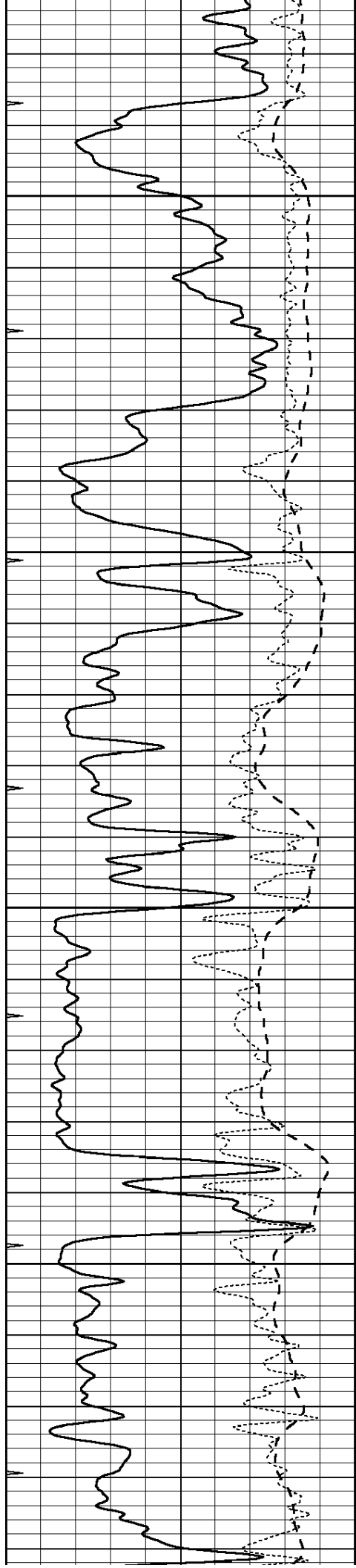
4250

4300

4350

4400



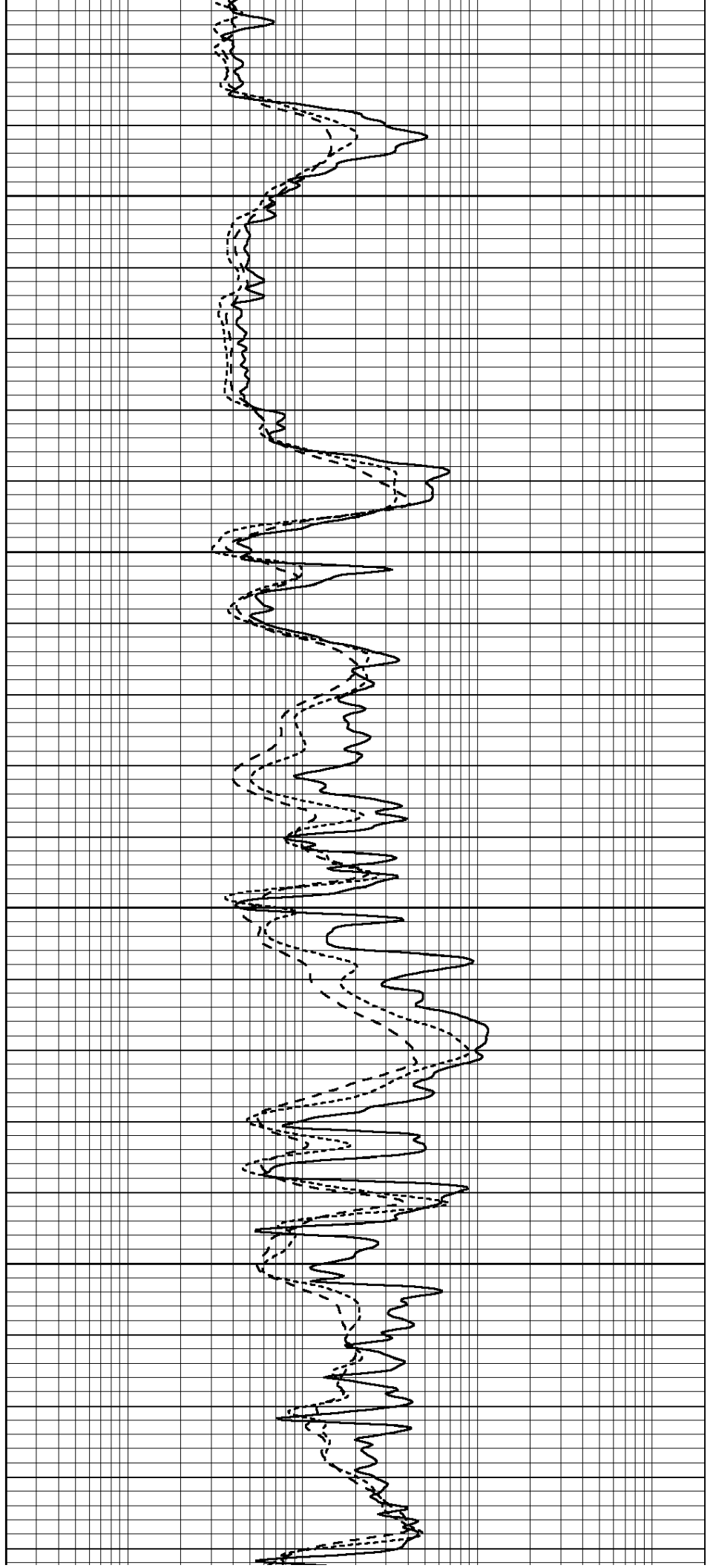


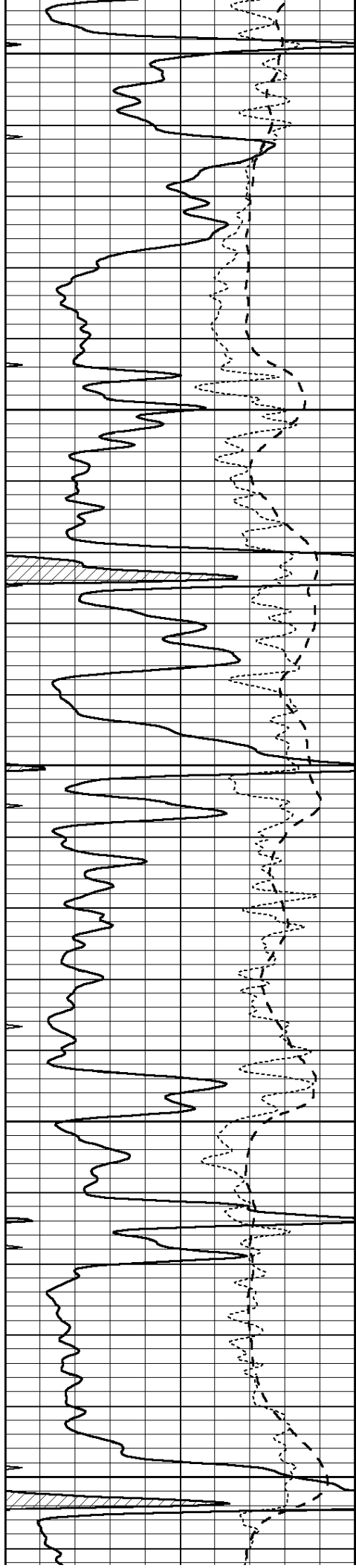
4450

4500

4550

4600





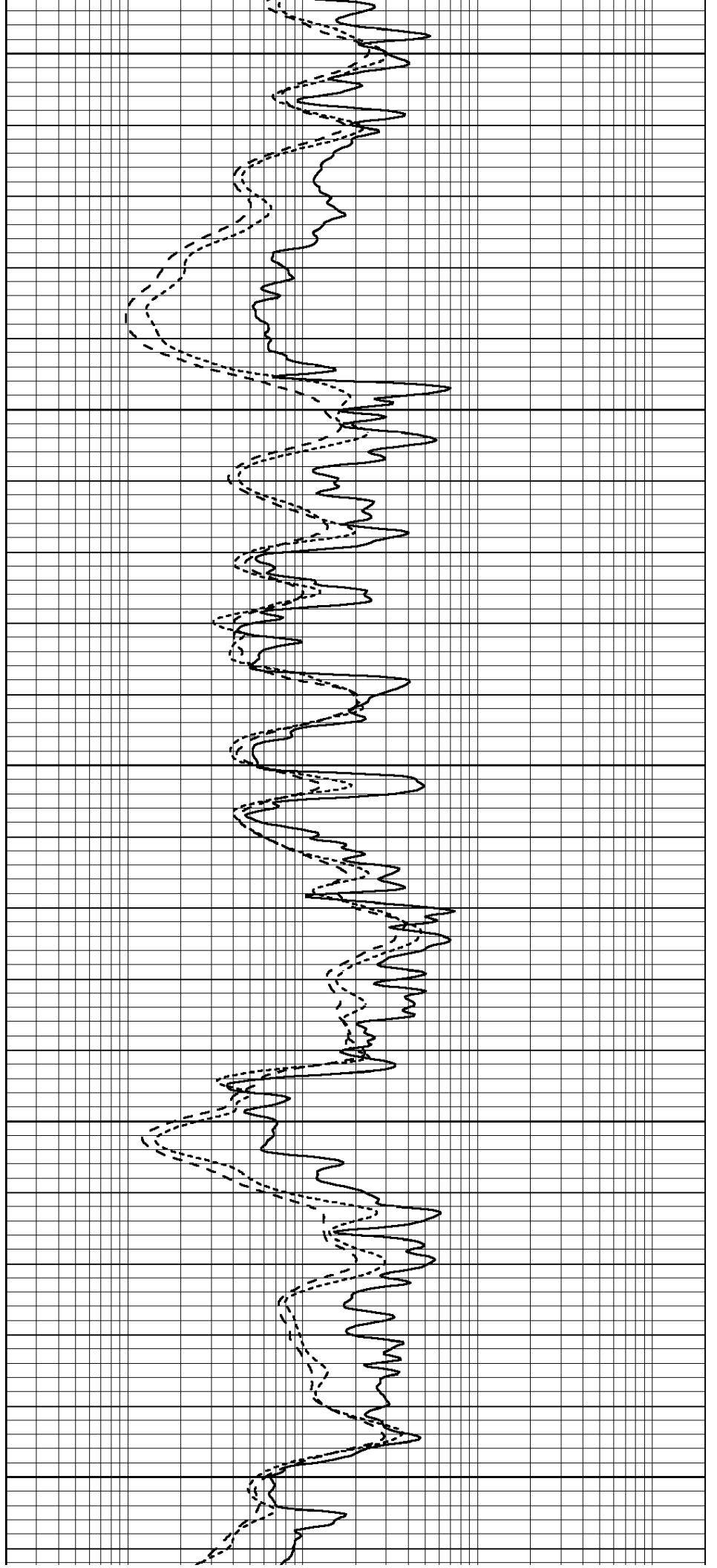
4650

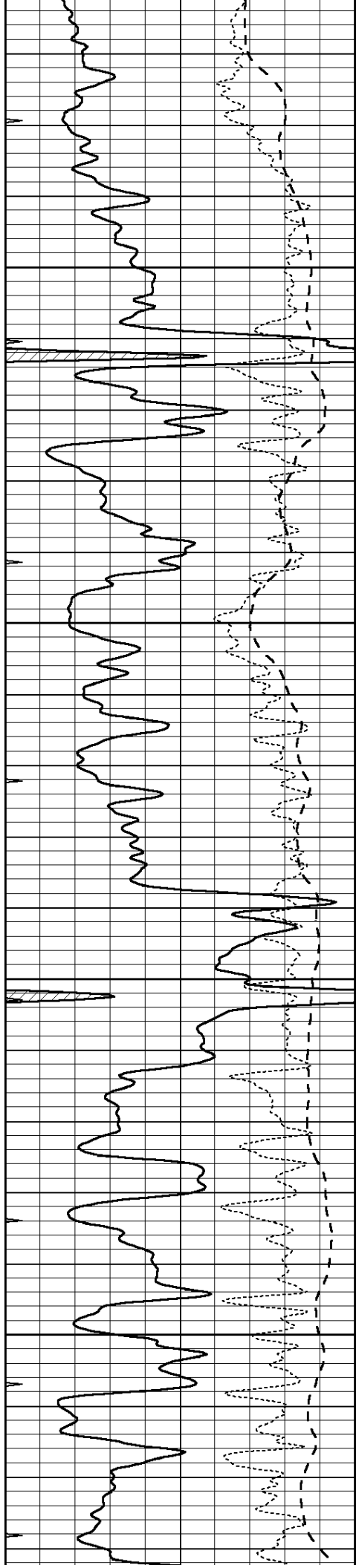
4700

4750

4800

4850



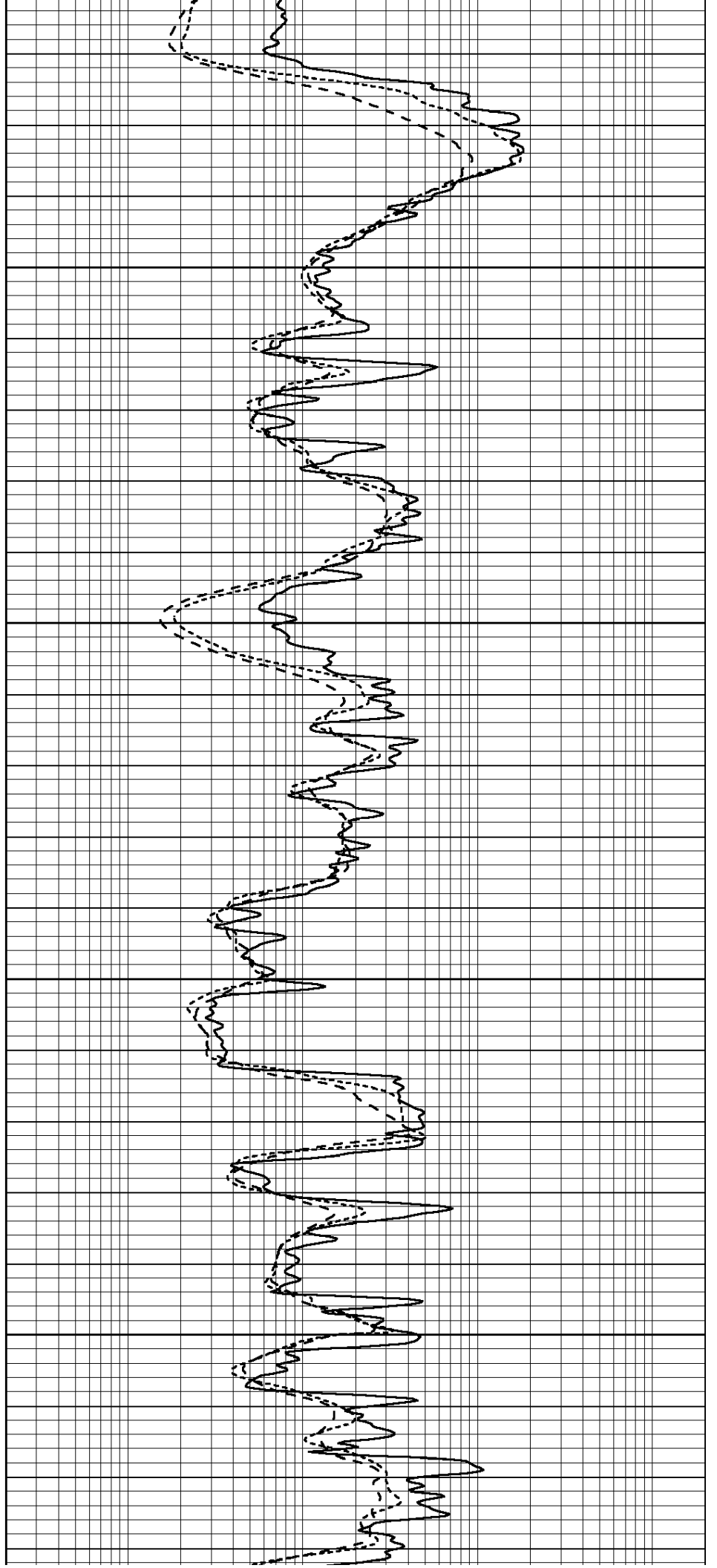


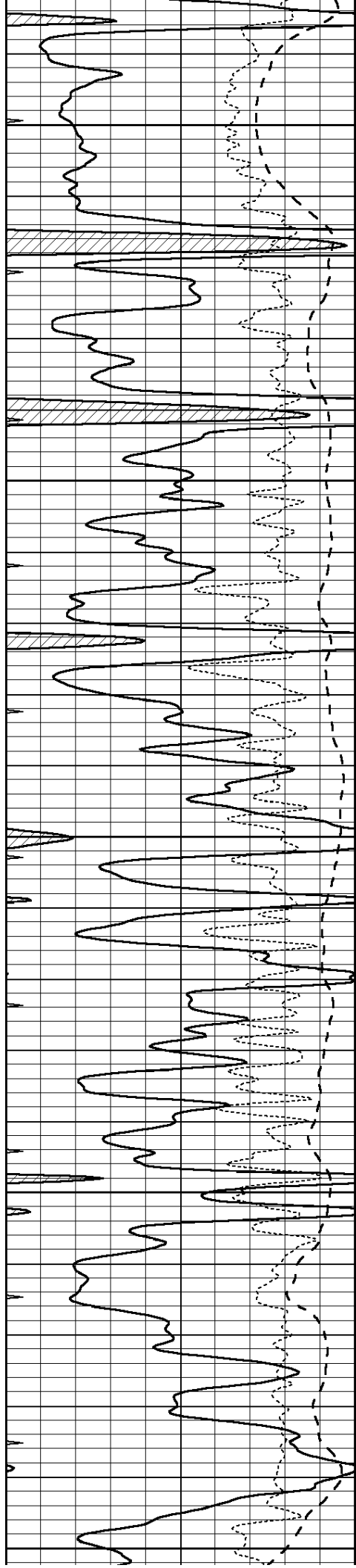
4900

4950

5000

5050





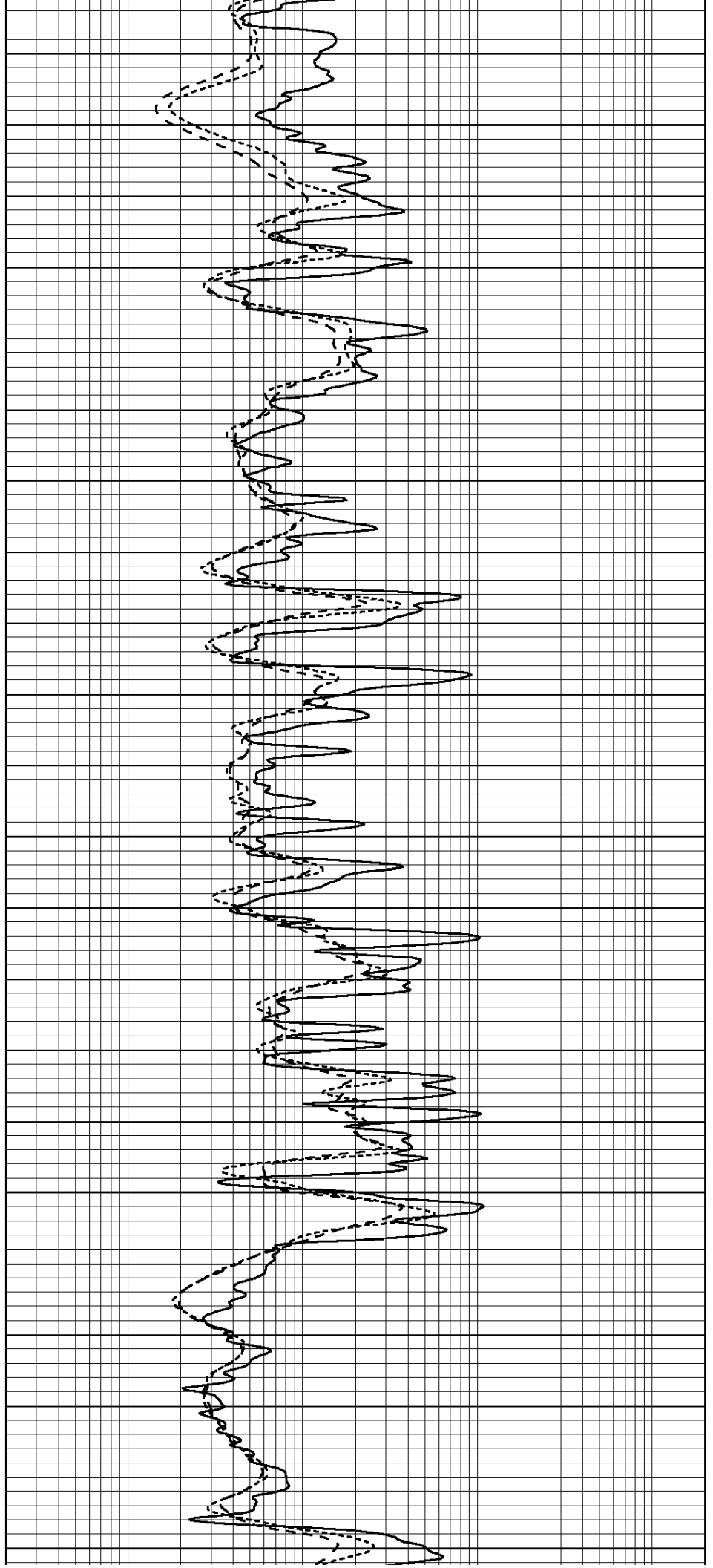
5100

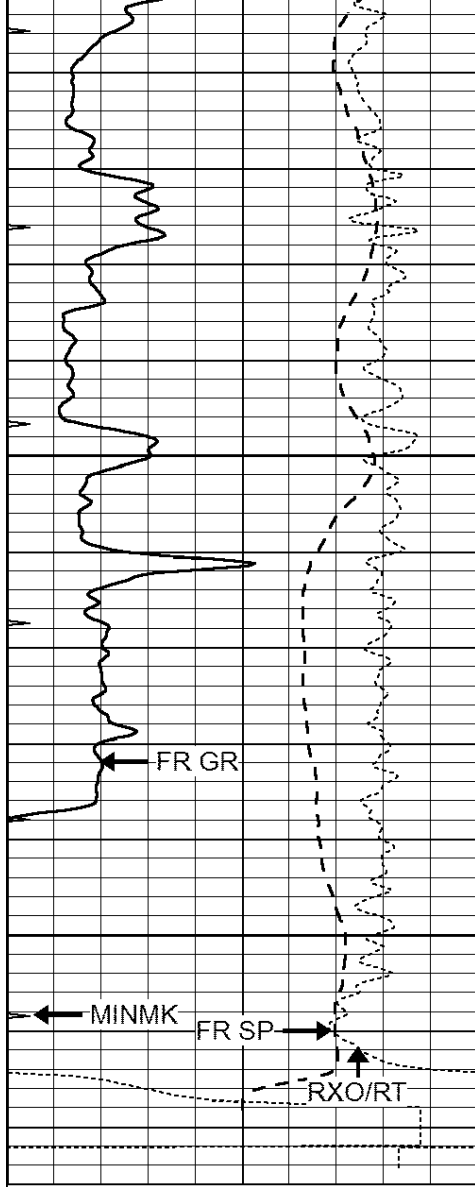
5150

5200

5250

5300



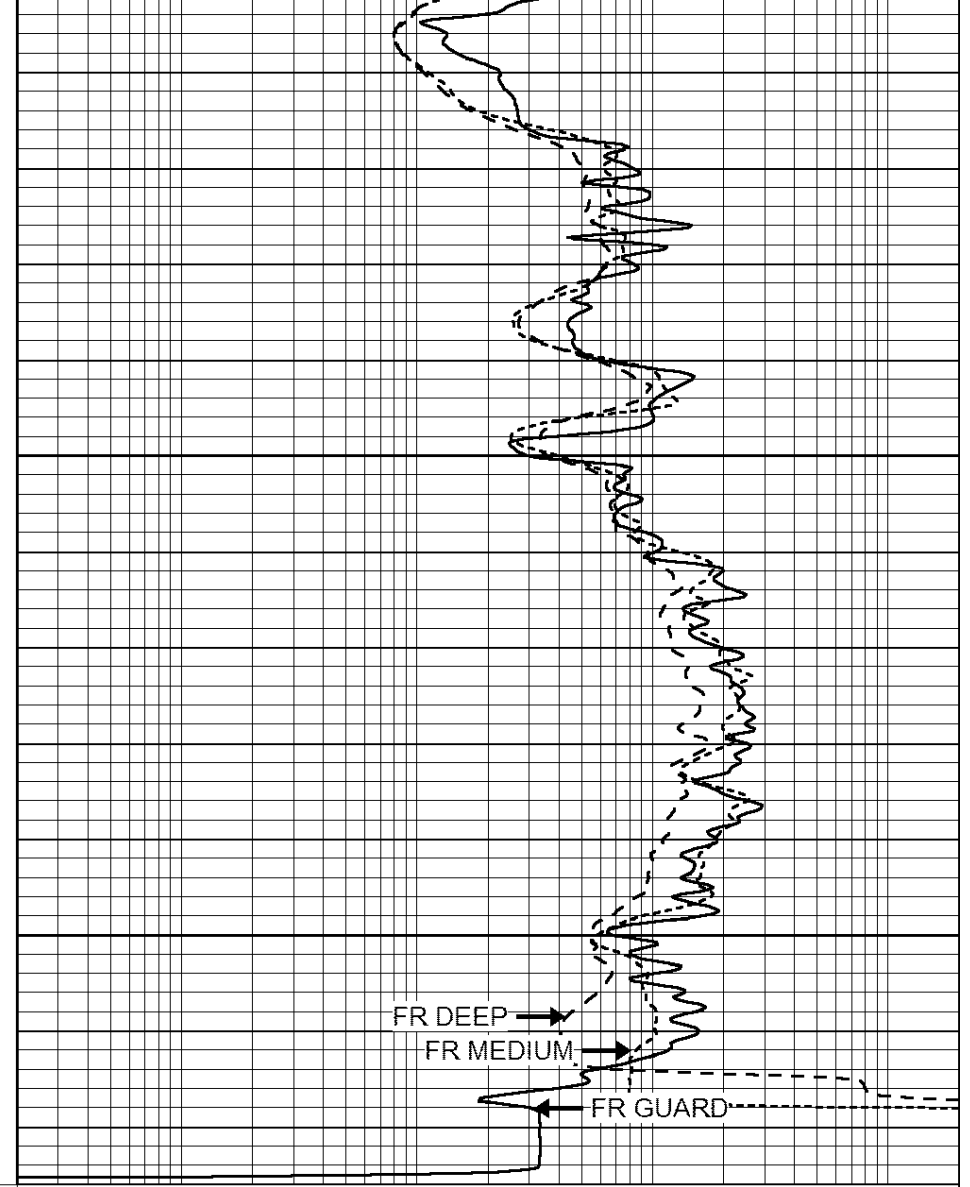


0	GAMMA RAY (GAPI)	150
-100	SP (mV)	100
-250	Rxo/Rt	50
0	MINMK	20

5350

5400

LTD 5420



0.2	SHALLOW GUARD (Ohm-m)	2000
0.2	DEEP INDUCTION (Ohm-m)	2000
0.2	MEDIUM INDUCTION (Ohm-m)	2000



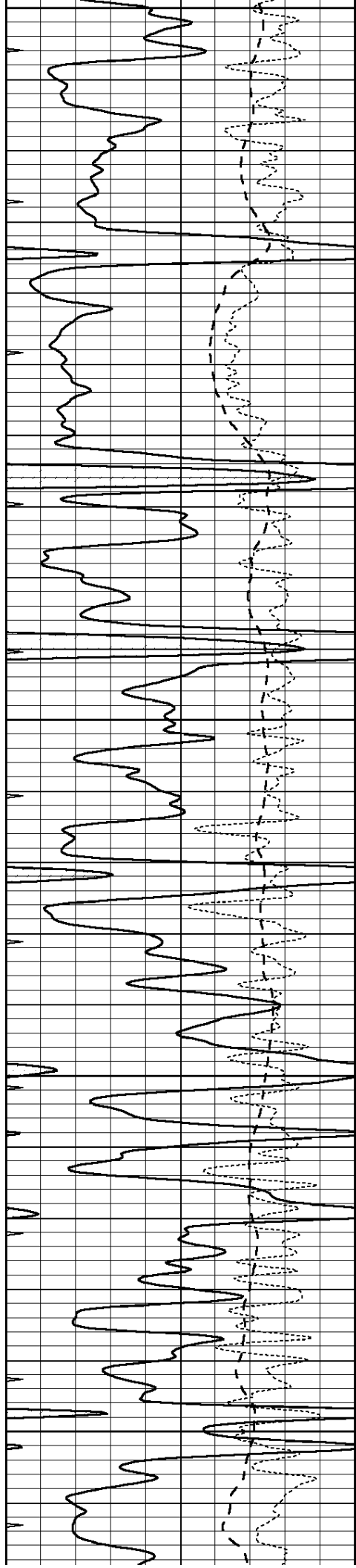
SUPERIOR
Hays,
Kansas

REPEAT SECTION

Database File: 409445pe.db
 Dataset Pathname: pass2.4
 Presentation Format: dil
 Dataset Creation: Thu Aug 02 07:54:30 2012 by Calc Open-Cased 110302
 Charted by: Depth in Feet scaled 1:240

0	GAMMA RAY (GAPI)	150
-100	SP (mV)	100
-250	Rxo/Rt	50
0	MINMK	20

0.2	SHALLOW GUARD (Ohm-m)	2000
0.2	DEEP INDUCTION (Ohm-m)	2000
0.2	MEDIUM INDUCTION (Ohm-m)	2000



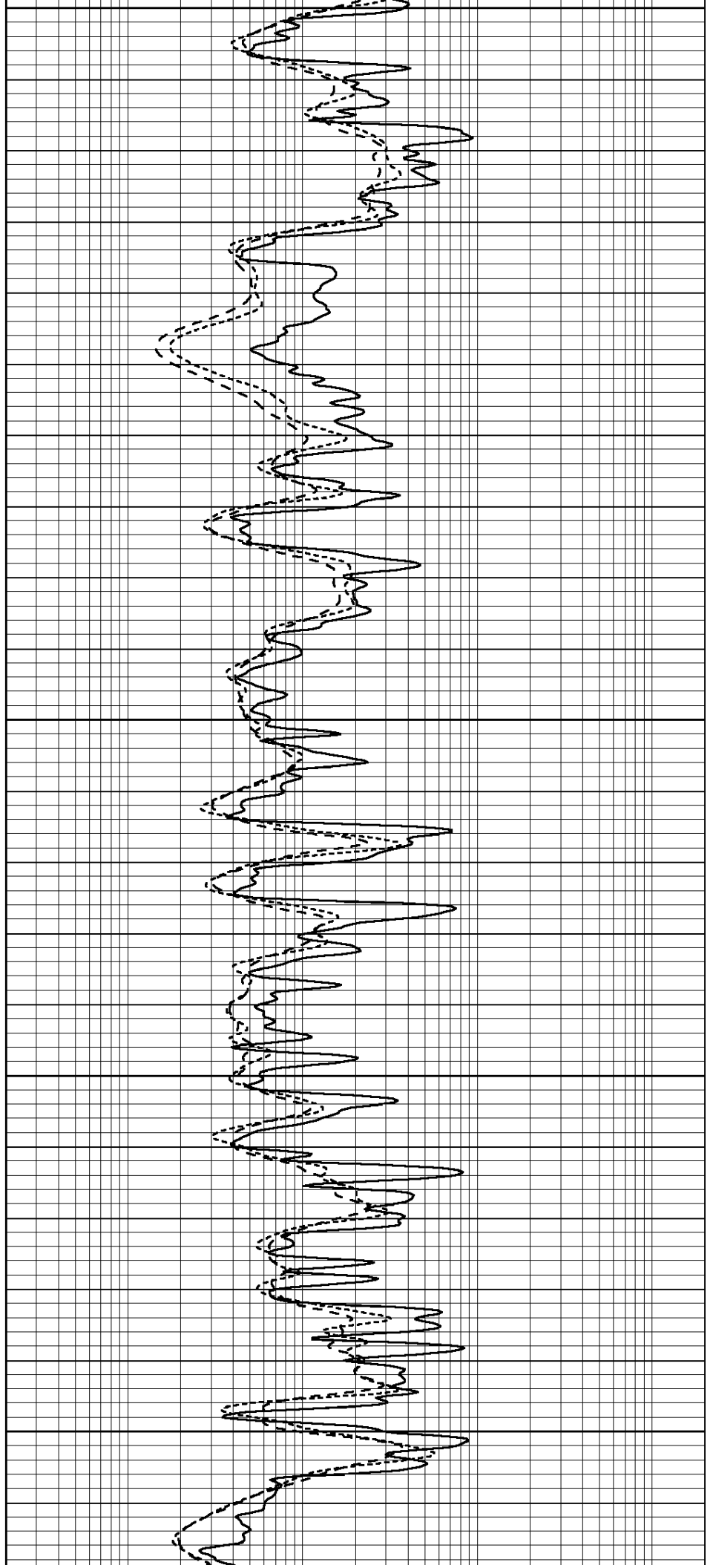
5050

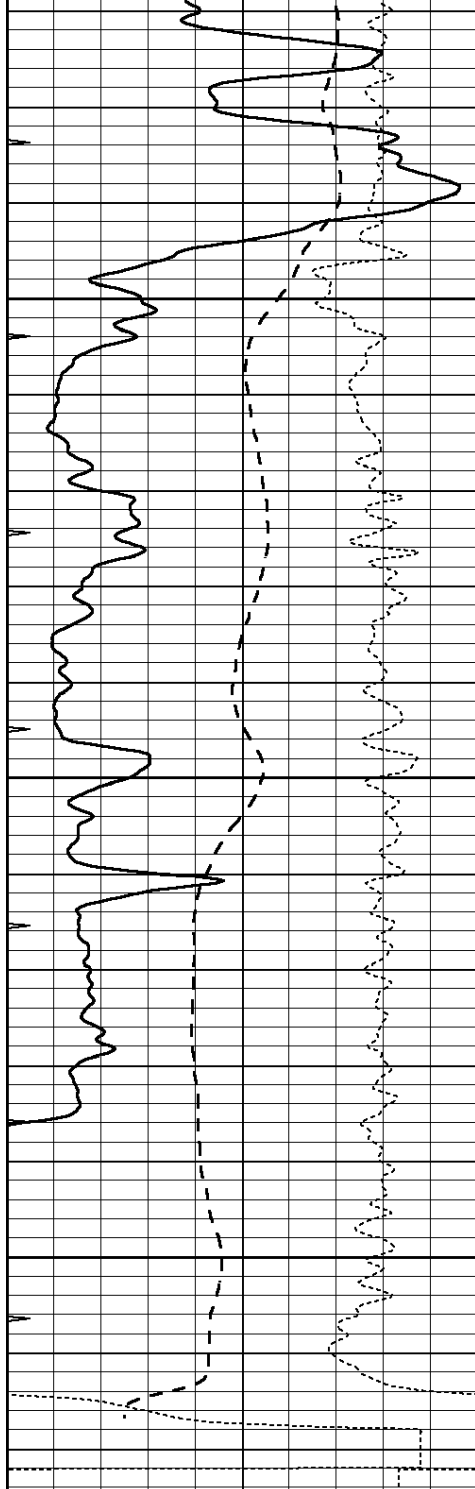
5100

5150

5200

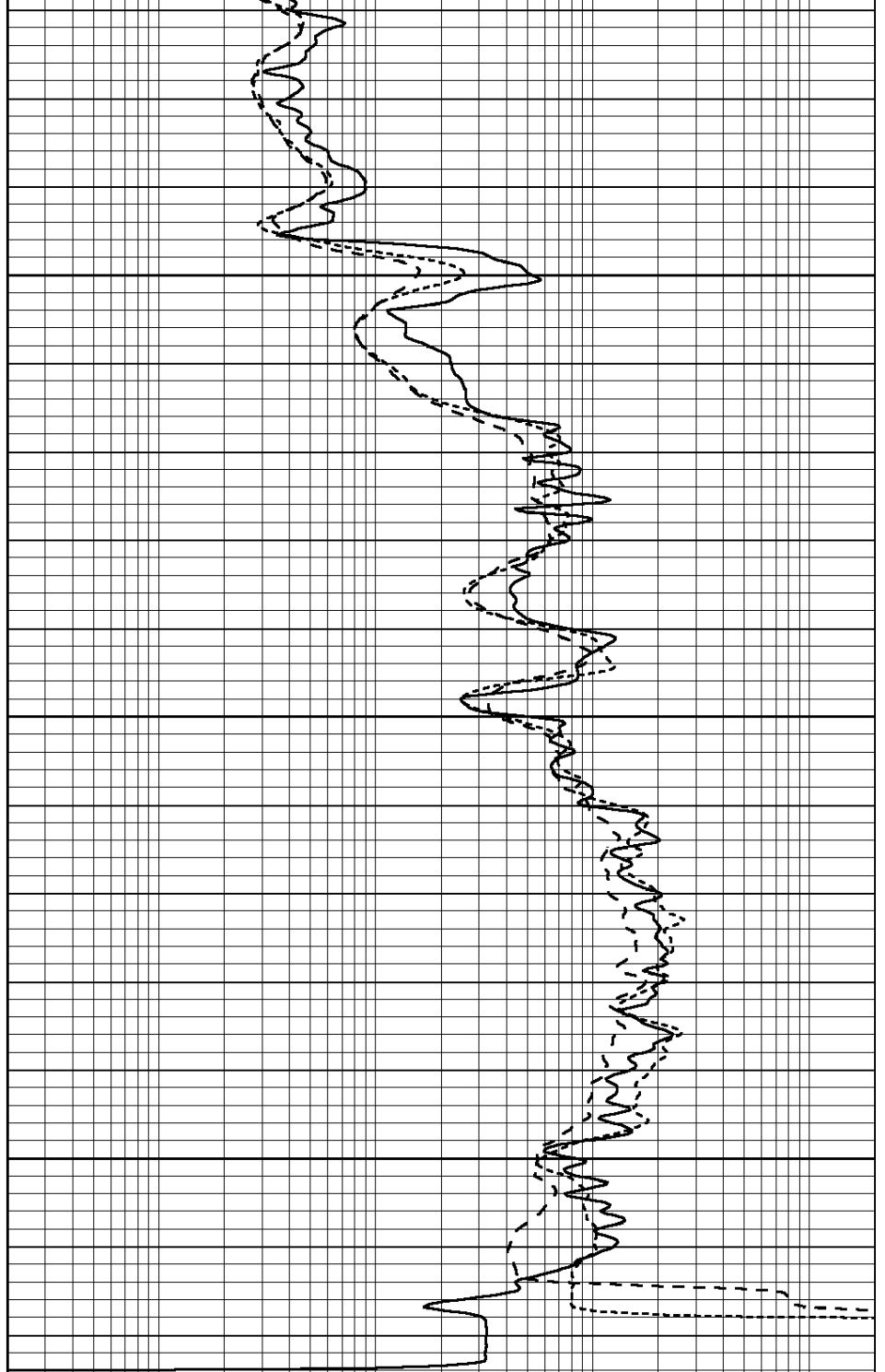
5250





0	GAMMA RAY (GAPI)	150
-100	SP (mV)	100
-250	Rxo/Rt	50
0	MINMK	20

5300
5350
5400



0.2	SHALLOW GUARD (Ohm-m)	2000
0.2	DEEP INDUCTION (Ohm-m)	2000
0.2	MEDIUM INDUCTION (Ohm-m)	2000

Calibration Report

Database File: 409445pe.db
 Dataset Pathname: pass3.8
 Dataset Creation: Thu Aug 02 08:46:26 2012

Dual Induction Calibration Report

Serial-Model: DIL4-GEAR
 Performed: Thu Jul 26 17:34:42 2012

Loop:	Readings			References			Results	
	Air	Loop		Air	Loop		m	b
Deep	0.008	0.666	V	0.000	400.000	mmho/m	570.000	-5.000
Medium	-0.003	0.769	V	0.000	462.500	mmho/m	560.000	-3.000
Internal:	Zero	Cal		Zero	Cal		m	b
Deep	0.013	0.651	V	0.000	400.000	mmho/m	627.541	-8.365
Medium	0.020	0.754	V	0.000	462.500	mmho/m	630.311	-12.549

Litho Density Calibration Report
Serial: 003N Model: PRB
Performed Tue Sep 08 14:14:44 2009

Litho Density Calibration

	Background	Magnesium	Aluminum	Sandstone	
Window 1	2042.6	12312.8	4225.8	13758.4	cps
Window 2	1855.8	10134.7	3624.2	11113.1	cps
Window 3	1639.4	6760.2	2716.3	7260.3	cps
Window 4	466.4	469.2	466.1	476.5	cps
Long Space	0.0	8278.9	1768.4	9257.4	cps
Short Space	2.2	2377.3	1544.1	2574.2	cps
Rho		1.7100	2.5900	1.3800	g/cc
Pe			2.5700	1.5500	
Rib Angle	: 44.4	Rib Slope	: 0.979	Density/Spine Ratio	: 0.549
Spine Angle	: 74.4	Spine Slope	: 3.577	Spine Intercept	: -18.8

Caliper

	Readings	Reference
Low Ref	3.4	7.9
High Ref	5.5	15.0
	Gain: 3.4	Offset: -3.5

Compensated Neutron Calibration Report

Serial Number: 070808
Tool Model: Probe

PRE-SURVEY VERIFICATION

Detector	Readings	Measured	Target
Short Space	cps		
Long Space	cps	pu	pu

POST-SURVEY VERIFICATION

Detector	Readings	Measured	Target
Short Space	cps		
Long Space	cps	pu	pu

Gamma Ray Calibration Report

Serial Number: 070559
Tool Model: OPEN_GR
Performed: Thu Jul 26 17:34:29 2012

Calibrator Value: 1.0 GAPI

Background Reading: 0.0 cps
Calibrator Reading: 1.0 cps

Sensitivity: 0.3000 GAPI/cps

DATE	DESCRIPTION	AMOUNT	BALANCE
1/1/20	Opening Balance		100.00
1/15/20	Deposit	50.00	150.00
1/20/20	Withdrawal	20.00	130.00
1/25/20	Deposit	30.00	160.00
1/30/20	Withdrawal	10.00	150.00
2/5/20	Deposit	40.00	190.00
2/10/20	Withdrawal	15.00	175.00
2/15/20	Deposit	25.00	200.00
2/20/20	Withdrawal	30.00	170.00
2/25/20	Deposit	15.00	185.00
2/28/20	Withdrawal	5.00	180.00
3/1/20	Deposit	10.00	190.00
3/5/20	Withdrawal	20.00	170.00
3/10/20	Deposit	30.00	200.00
3/15/20	Withdrawal	15.00	185.00
3/20/20	Deposit	25.00	210.00
3/25/20	Withdrawal	10.00	200.00
3/30/20	Deposit	15.00	215.00
3/31/20	Closing Balance		215.00