



SUPERIOR
Hays,
Kansas

COMPENSATED
DENSITY / NEUTRON
PE LOG

Company VINCENT OIL CORPORATION
 Well LOKKEN #1-29
 Field WILDCAT
 County FORD
 State KANSAS

Company VINCENT OIL CORPORATION
 Well LOKKEN #1-29
 Field WILDCAT
 County FORD State KANSAS

Location: API # : 15-057-20823-0000
 820' FNL & 540' FEL
 SEC 29 TWP 29S RGE 24W
 Permanent Datum GROUND LEVEL Elevation 2564
 Log Measured From KELLY BUSHING 10' A.G.L.
 Drilling Measured From KELLY BUSHING
 Other Services
 DIL/MEL
 SONIC
 Elevation
 K.B. 2574
 D.F. 2572
 G.L. 2564

Date	8/2/12		
Run Number	ONE		
Depth Driller	5420		
Depth Logger	5420		
Bottom Logged Interval	5396		
Top Log Interval	4100		
Casing Driller	8 5/8"@644'		
Casing Logger	644		
Bit Size	7 7/8"		
Type Fluid in Hole	CHEMICAL MUD	CHLORIDES 9,400 PPM	
Density / Viscosity	8.9/55		
pH / Fluid Loss	9.0/14.8		
Source of Sample	FLOWLINE		
Rm @ Meas. Temp	.450@90F		
Rmt @ Meas. Temp	.336@90F		
Rmc @ Meas. Temp	.540@90F		
Source of Rmf / Rmc	MEASUREMENT		
Rm @ BHT	.314@129F		
Time Circulation Stopped	3 HOURS		
Time Logger on Bottom	6:45 A.M.		
Maximum Recorded Temperature	129F		
Equipment Number	4010		
Location	HAYS, KANSAS		
Recorded By	JEFF LUEBBERS		
Witnessed By	JIM HALL		

<<< Fold Here >>>

All interpretations are opinions based on inferences from electrical or other measurements and we cannot and do not guarantee the accuracy or correctness of any interpretation, and we shall not, except in the case of gross or willful negligence on our part, be liable or responsible for any loss, costs, damages, or expenses incurred or sustained by anyone resulting from any interpretation made by any of our officers, agents or employees. These interpretations are also subject to our general terms and conditions set out in our current Price Schedule.

Comments

THANK YOU FOR USING SUPERIOR WELL SERVICE HAYS, KANSAS (785) 628-6395
 DIRECTIONS
 BLOOM, KS. & HWY 54, W. ON HWY 54 TO "CLARK COUNTY RD.9", 2 1/2N., W. INTO

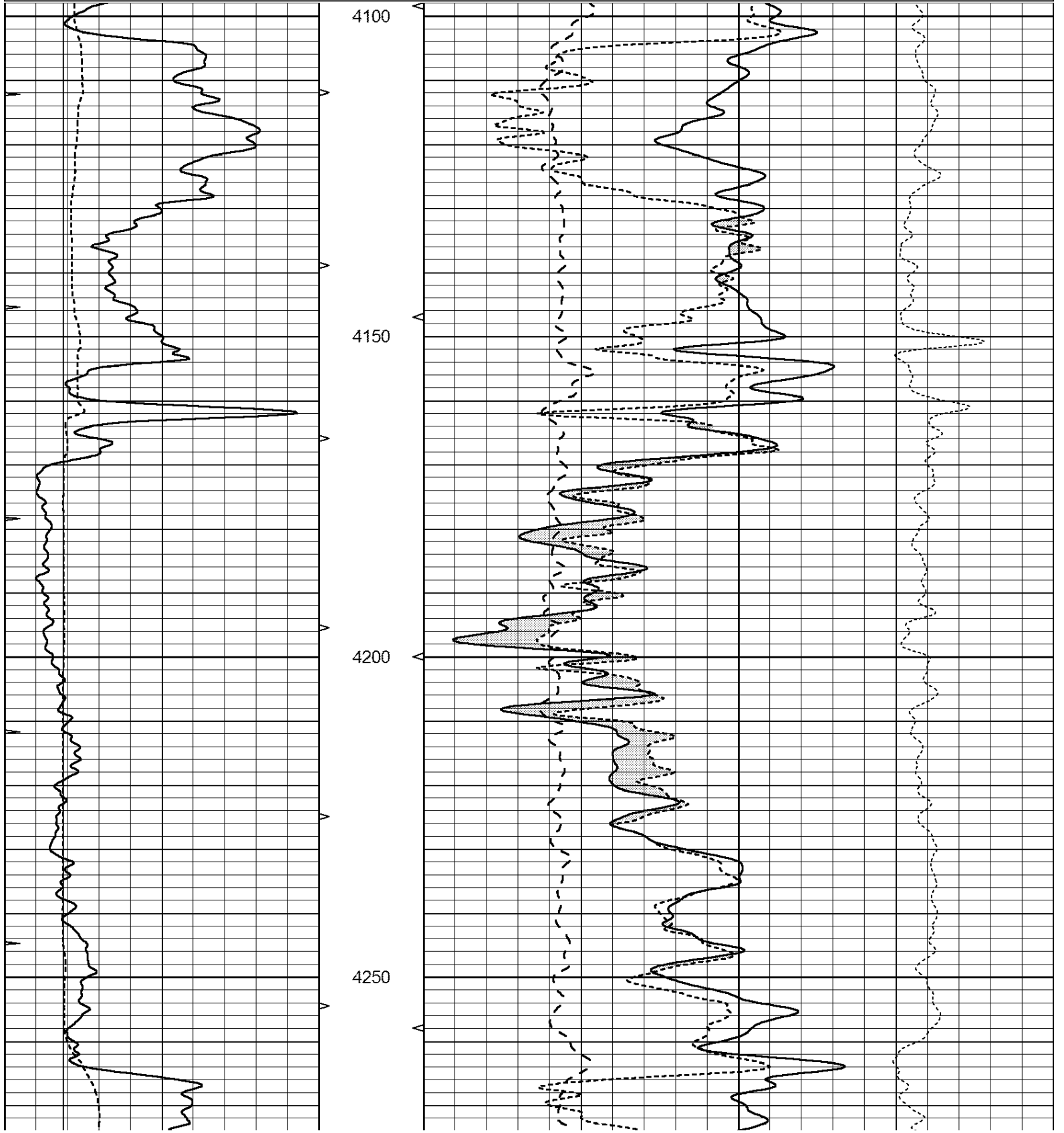


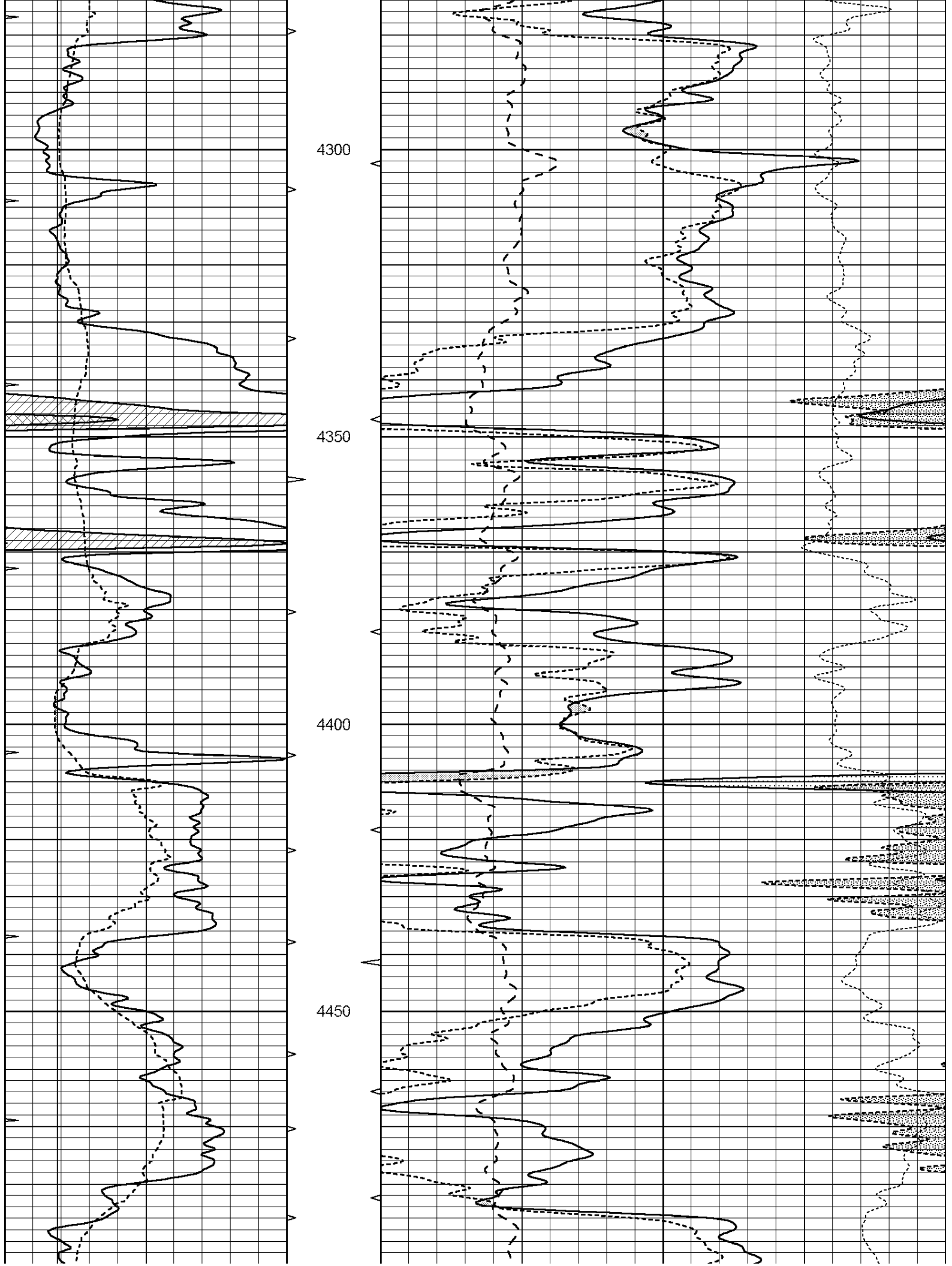
SUPERIOR
Hays,
Kansas

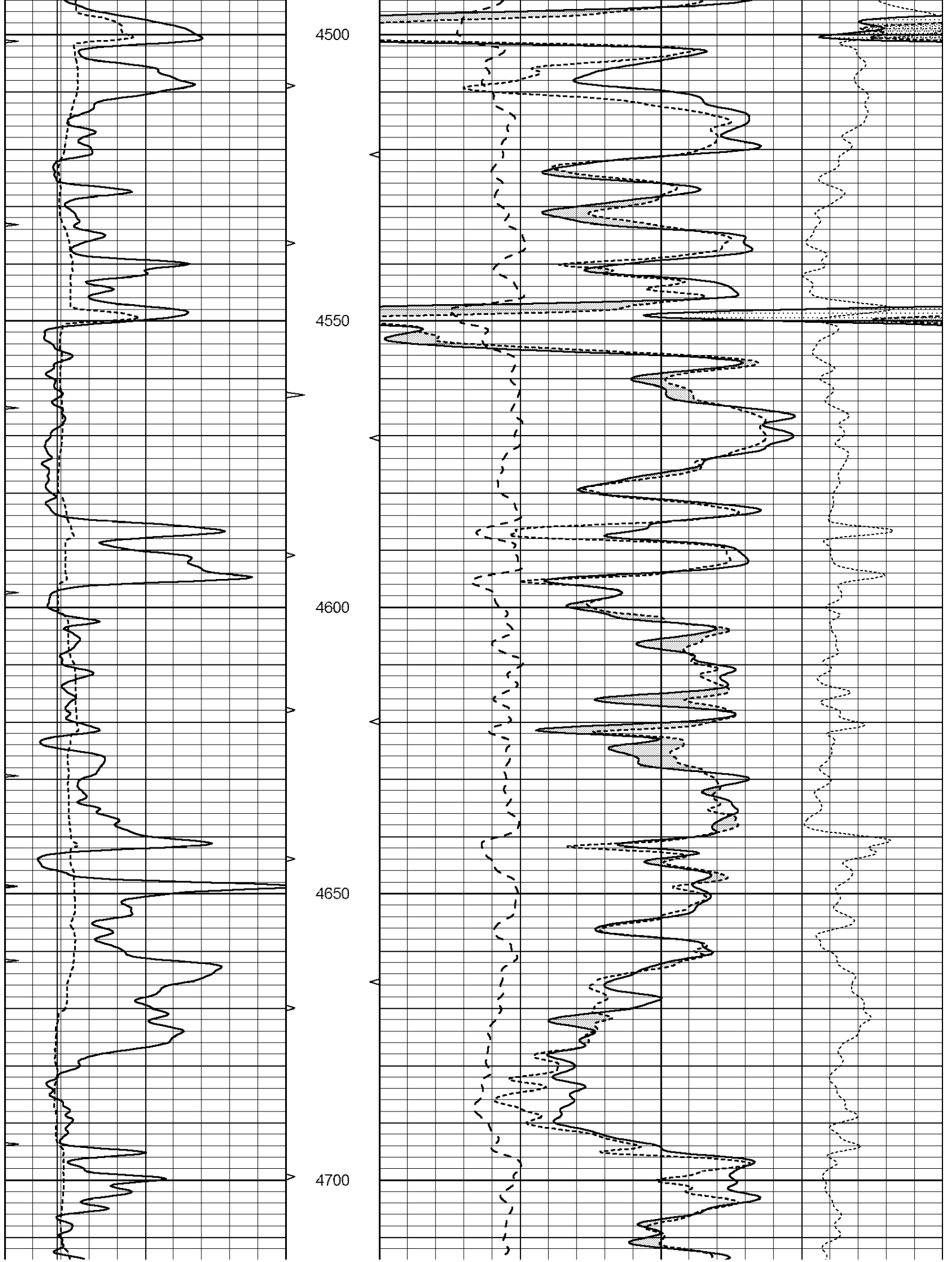
MAIN SECTION

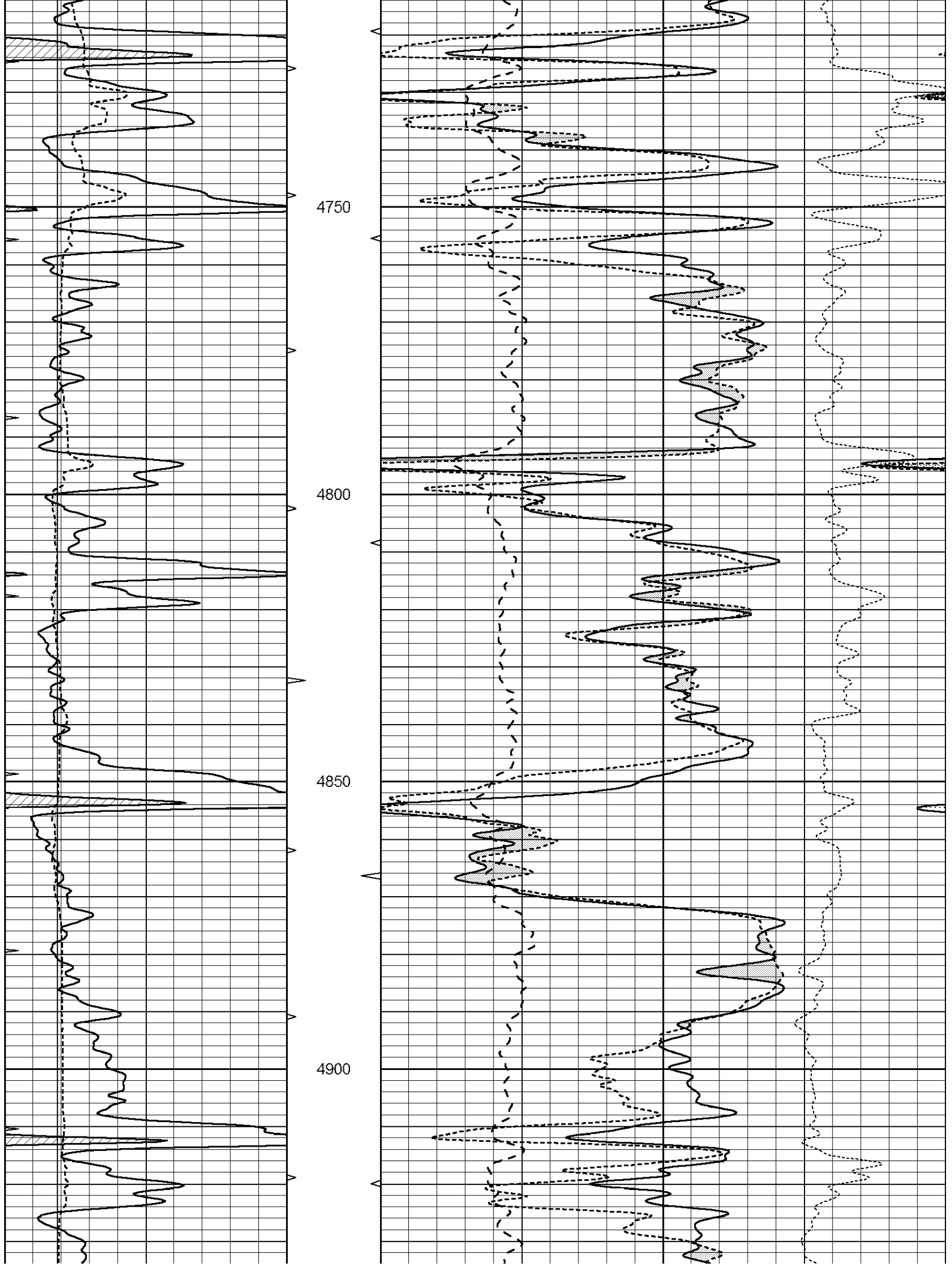
Database File: 409445pe.db
 Dataset Pathname: pass3.8
 Presentation Format: ldt_neu
 Dataset Creation: Thu Aug 02 08:46:26 2012
 Charted by: Depth in Feet scaled 1:240

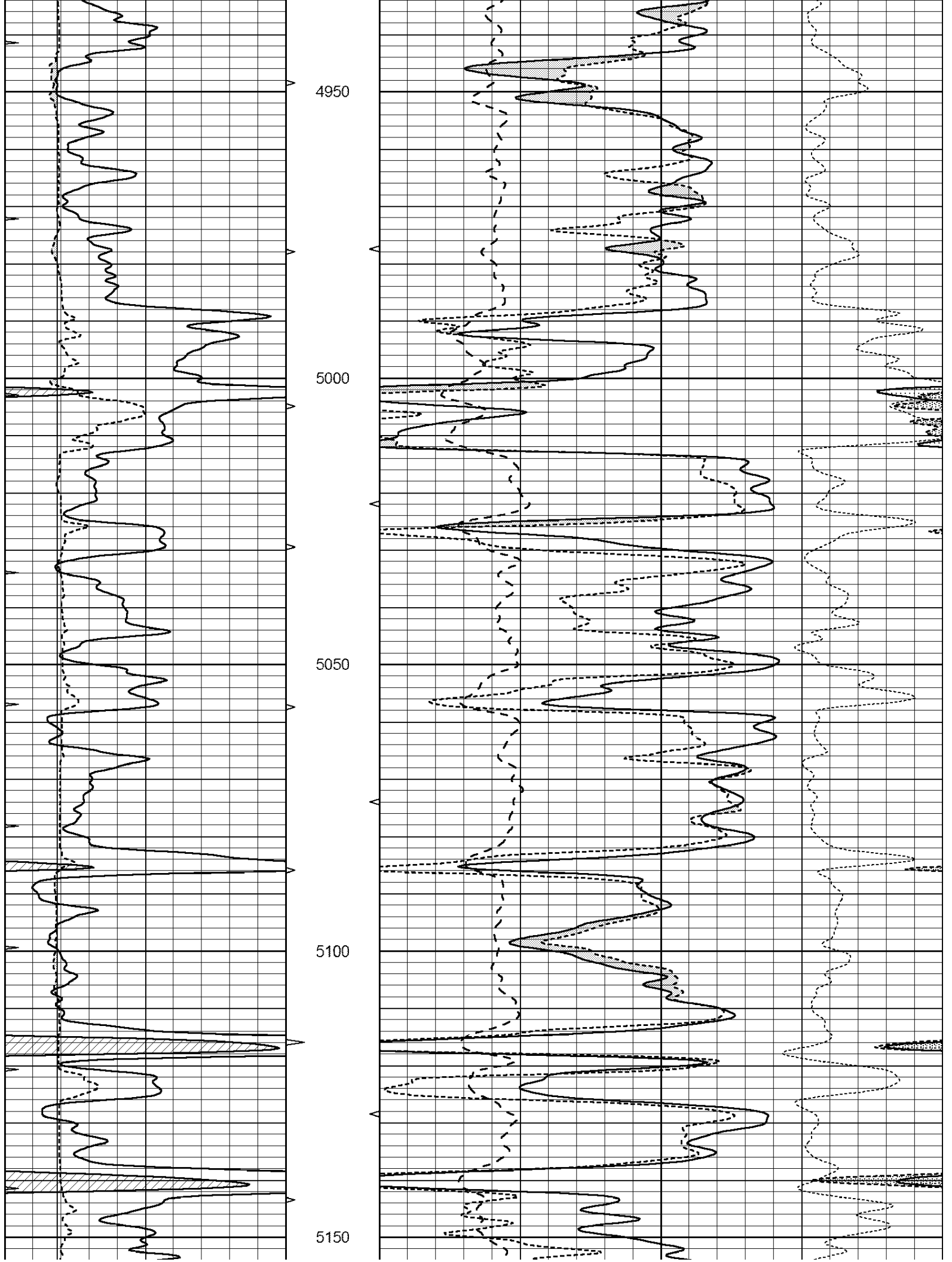
0	GAMMA RAY (GAPI)	150	ABHV	30	COMPENSATED DENSITY (pu)		-10
6	CALIPER (in)	16	10 (ft3)	0	COMPENSATED NEUTRON (pu)		-10
0	MINMK	20	TBHV	0	PE	10	-0.25 CORRECTION (g/cc) 0.25
			0 (ft3)	10			

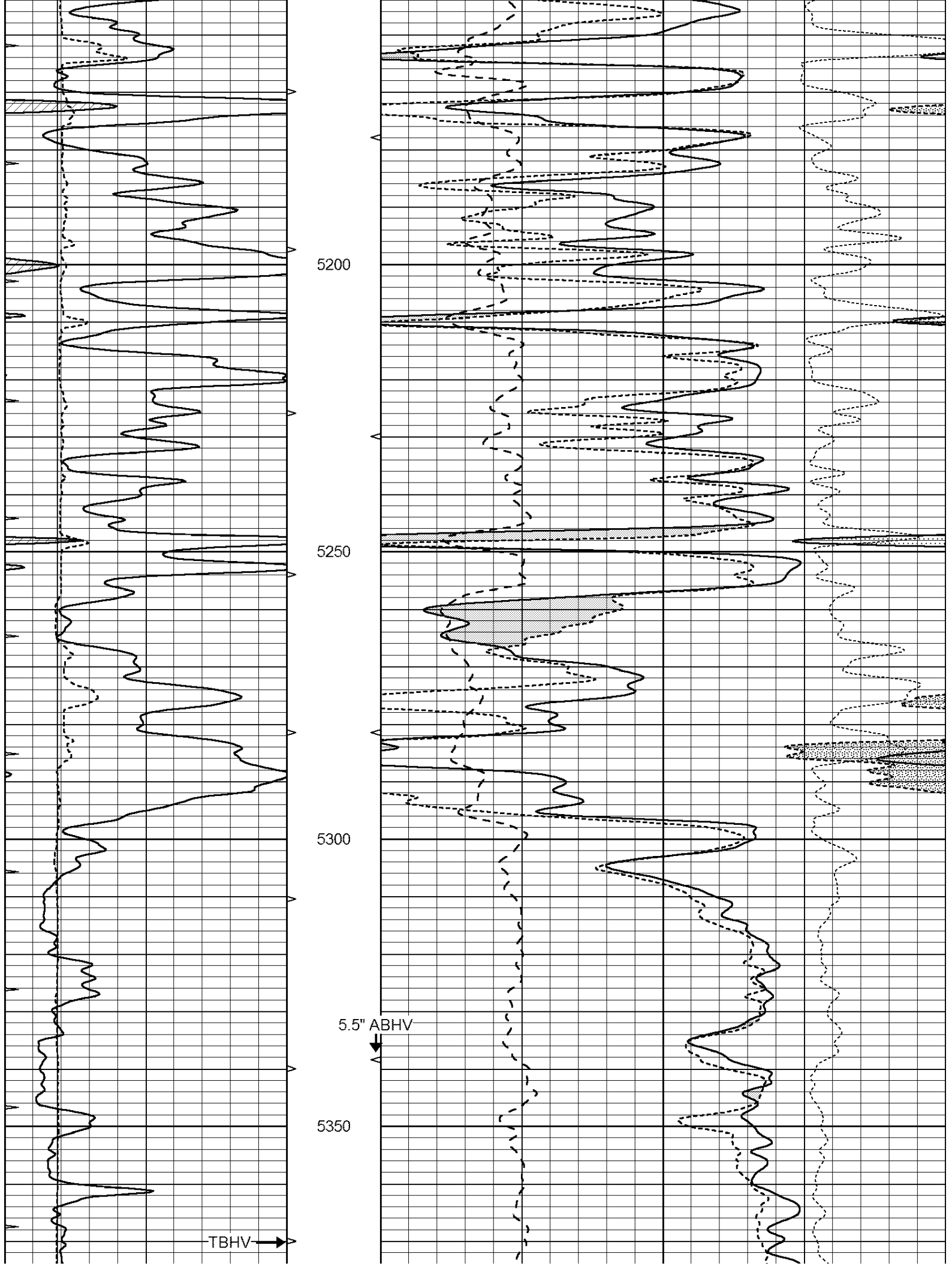


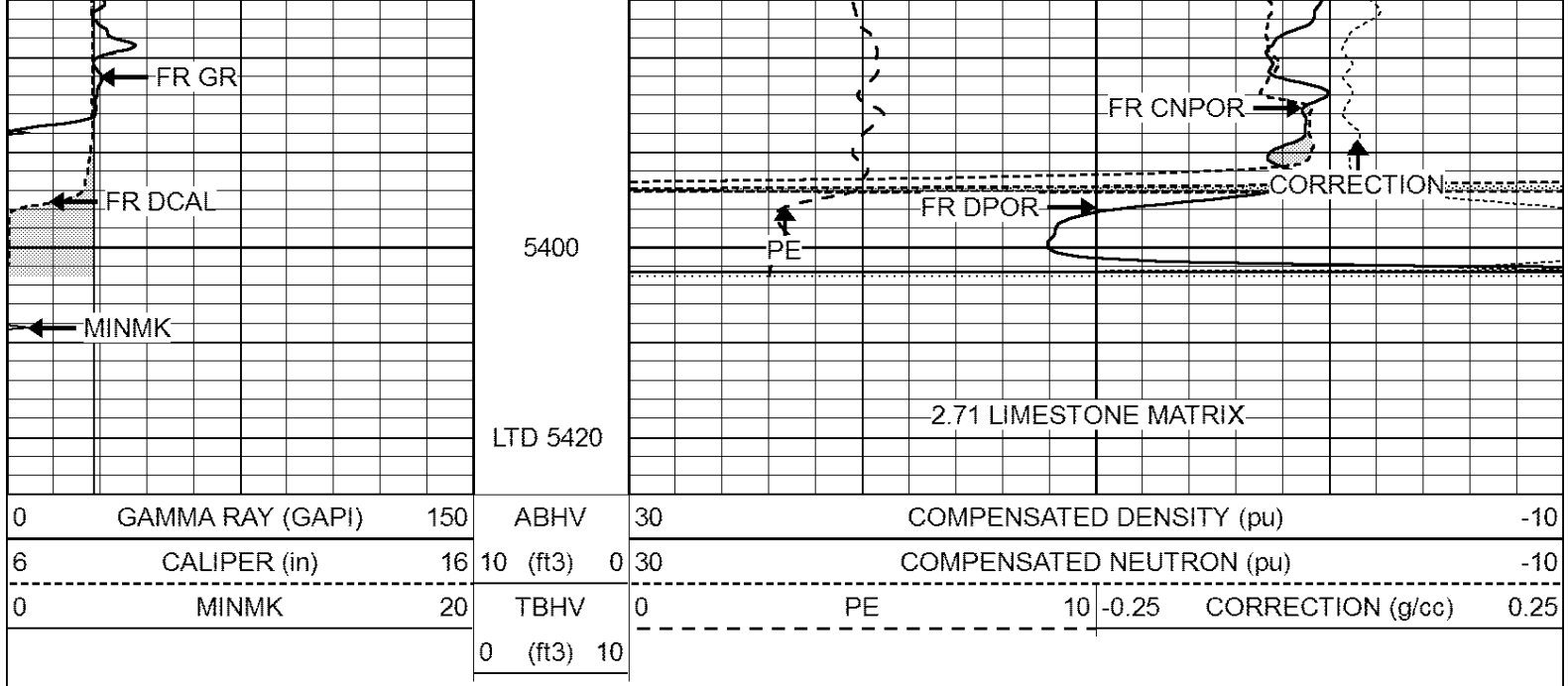










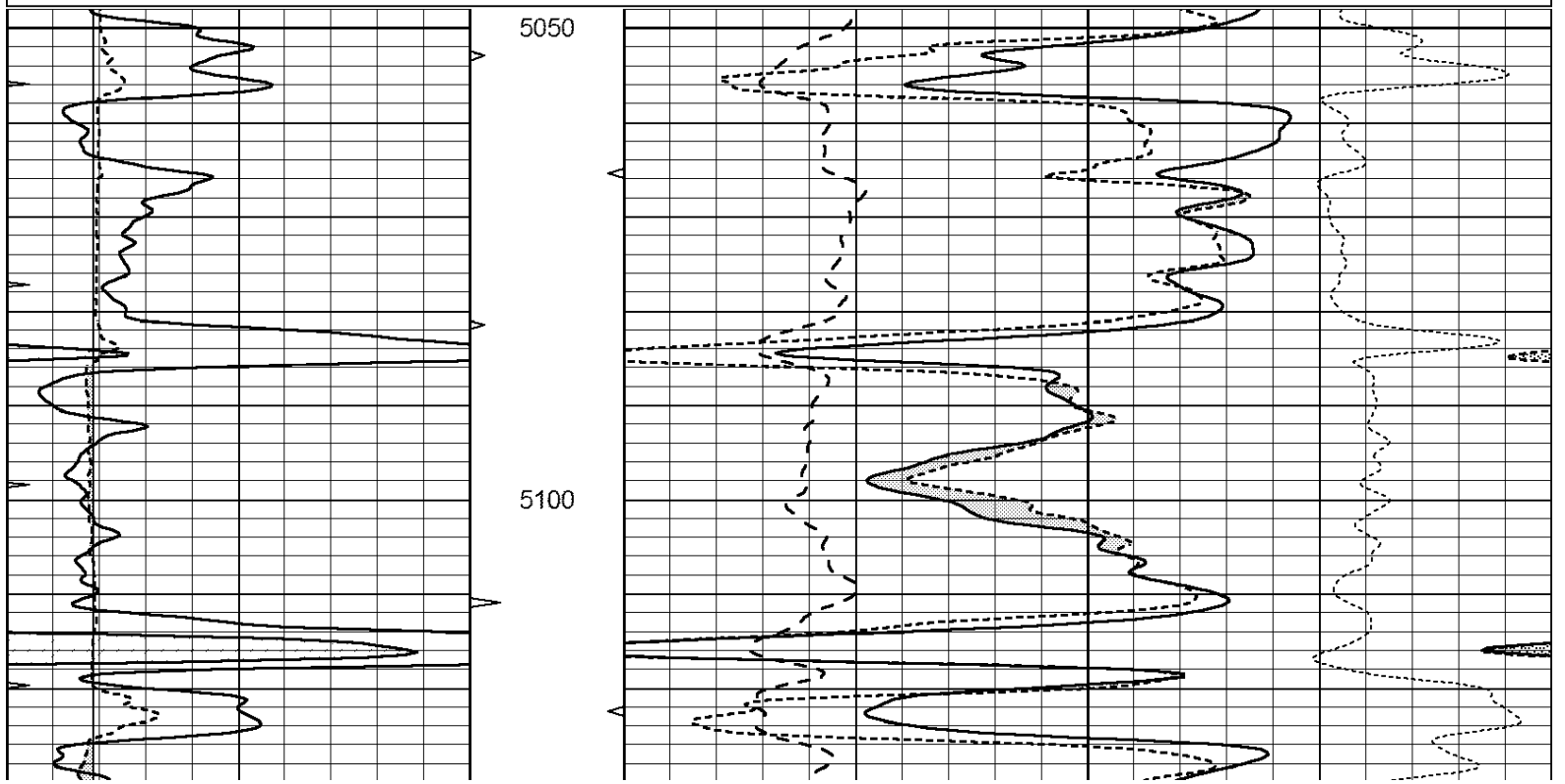


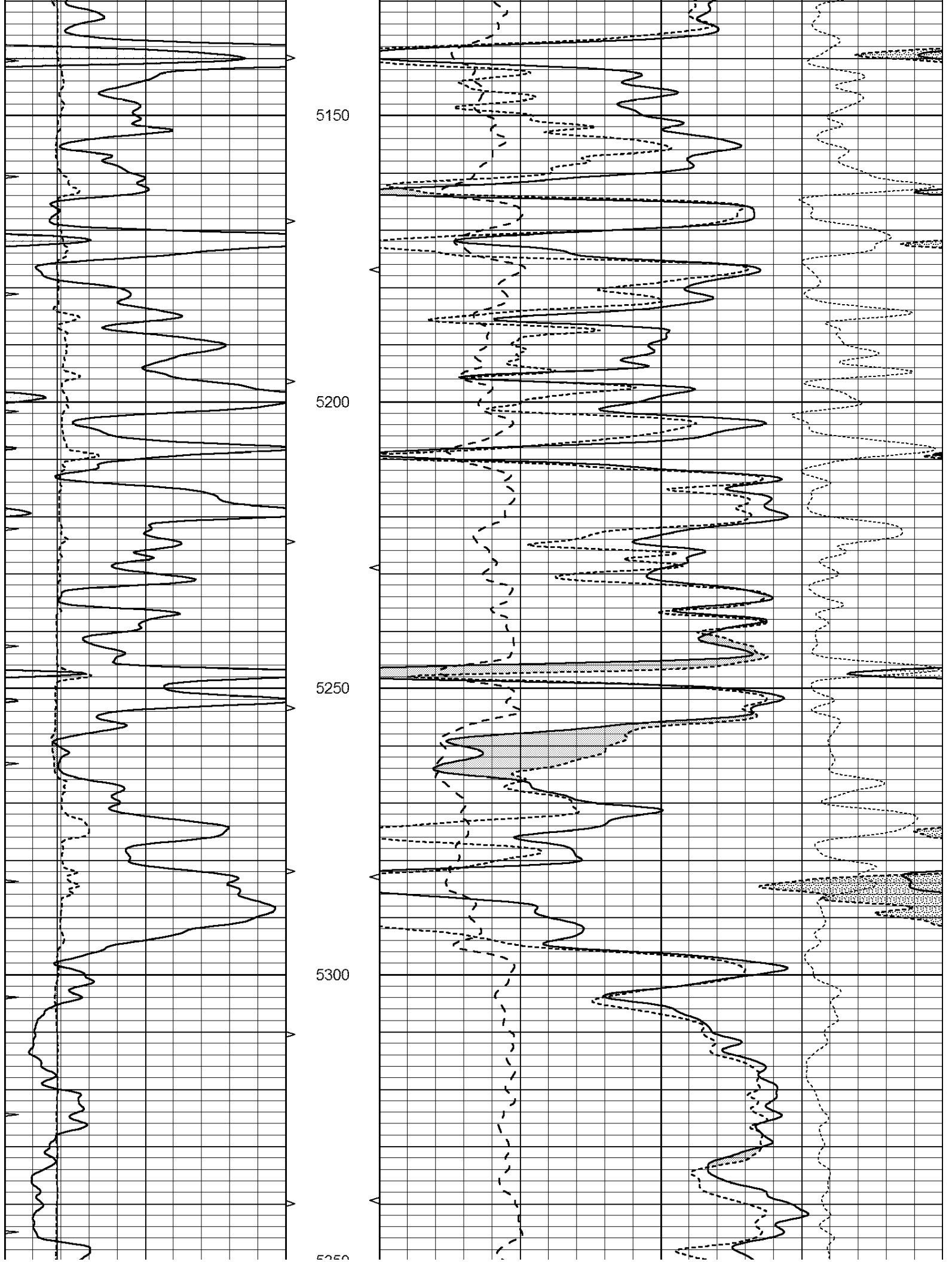
SUPERIOR
Hays,
Kansas

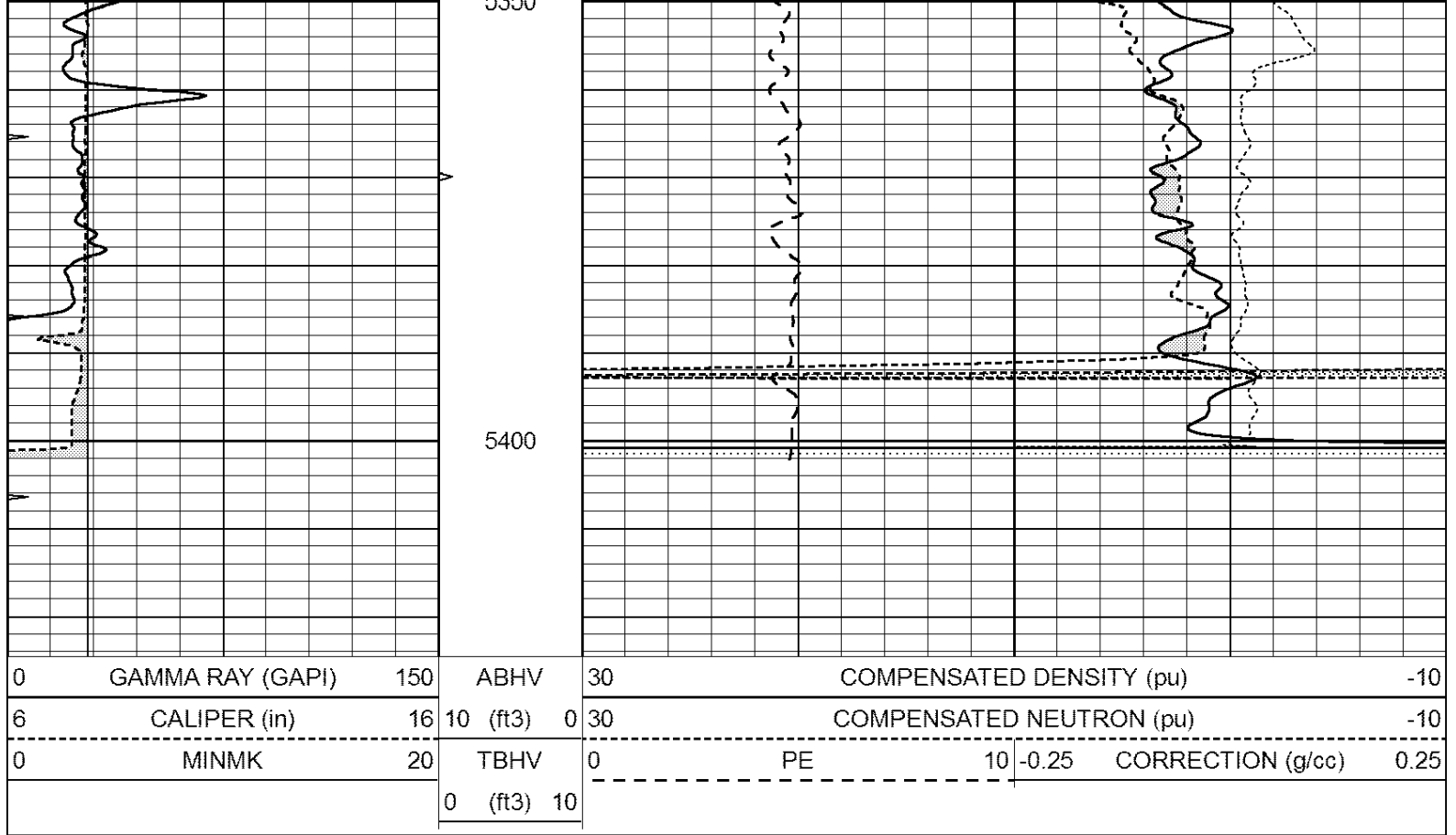
REPEAT SECTION

Database File: 409445pe.db
 Dataset Pathname: pass2.4
 Presentation Format: ldt_neu
 Dataset Creation: Thu Aug 02 07:54:30 2012 by Calc Open-Cased 110302
 Charted by: Depth in Feet scaled 1:240

0	GAMMA RAY (GAPI)	150	ABHV	30	COMPENSATED DENSITY (pu)	-10			
6	CALIPER (in)	16	10 (ft3)	0	30	COMPENSATED NEUTRON (pu)	-10		
0	MINMK	20	TBHV	0	PE	10	-0.25	CORRECTION (g/cc)	0.25
			0 (ft3)	10					







Calibration Report

Database File: 409445pe.db
 Dataset Pathname: pass3.8
 Dataset Creation: Thu Aug 02 08:46:26 2012

Dual Induction Calibration Report

Serial-Model: DIL4-GEAR
 Performed: Thu Jul 26 17:34:42 2012

Loop:	Readings				References		Results	
	Air	Loop			Air	Loop	m	b
Deep	0.008	0.666	V	0.000	400.000	mmho/m	570.000	-5.000
Medium	-0.003	0.769	V	0.000	462.500	mmho/m	560.000	-3.000
Internal:	Zero				Zero		m	
	Cal				Cal		b	
Deep	0.013	0.651	V	0.000	400.000	mmho/m	627.541	-8.365
Medium	0.020	0.754	V	0.000	462.500	mmho/m	630.311	-12.549

Litho Density Calibration Report

Serial: 003N Model: PRB
 Performed Tue Sep 08 14:14:44 2009

Litho Density Calibration

	Background	Magnesium	Aluminum	Sandstone	
Window 1	2042.6	12312.8	4225.8	13758.4	cps
Window 2	1855.8	10134.7	3624.2	11113.1	cps
Window 3	1639.4	6760.2	2716.3	7260.3	cps
Window 4	466.4	469.2	466.1	476.5	cps
Long Space	0.0	8278.9	1768.4	9257.4	cps
Short Space	2.2	2377.3	1544.1	2574.2	cps
Rho		1.7100	2.5900	1.3800	g/cc

Pe
Rib Angle : 44.4
Spine Angle : 74.4

Rib Slope : 0.979
Spine Slope : 3.577

2.5700 1.5500
Density/Spine Ratio : 0.549
Spine Intercept : -18.8

Caliper
Readings Reference
Low Ref 3.4 7.9
High Ref 5.5 15.0
Gain: 3.4 Offset: -3.5

Compensated Neutron Calibration Report

Serial Number: 070808
Tool Model: Probe

PRE-SURVEY VERIFICATION

Detector	Readings	Measured	Target
Short Space	cps		
Long Space	cps	pu	pu

POST-SURVEY VERIFICATION

Detector	Readings	Measured	Target
Short Space	cps		
Long Space	cps	pu	pu

Gamma Ray Calibration Report

Serial Number: 070559
Tool Model: OPEN_GR
Performed: Thu Jul 26 17:34:29 2012
Calibrator Value: 1.0 GAPI
Background Reading: 0.0 cps
Calibrator Reading: 1.0 cps
Sensitivity: 0.3000 GAPI/cps