



NABORS

**COMPLETION
& PRODUCTION
SERVICES CO.**

**MICRO
LOG**

Company CHIEFTAIN OIL COMPANY, INC.
Well ROARK #1
Field WILDCAT
County BARBER
State KANSAS

Company CHIEFTAIN OIL COMPANY, INC.
Well ROARK #1
Field WILDCAT
County BARBER
State KANSAS

Location: API # : 15-007-23956-0000
520' FSL & 340' FWL
NE - SW - SW - SW
SEC 10 TWP 35S RGE 11W
Permanent Datum GROUND LEVEL Elevation 1322
Log Measured From KELLY BUSHING 13' A.G.L.
Drilling Measured From KELLY BUSHING
Other Services
CDL/CNL/PE
DIL
Elevation
K.B. 1335
D.F. 1333
G.L. 1322

Date	10/21/12
Run Number	TWO
Depth Driller	5545
Depth Logger	5546
Bottom Logged Interval	5544
Top Log Interval	4500
Casing Driller	13 3/8"@334'
Casing Logger	334
Bit Size	7 7/8"
Type Fluid in Hole	CHEMICAL MUD
Density / Viscosity	9.2/60
pH / Fluid Loss	10.5/7.8
Source of Sample	FLOWLINE
Rm @ Meas. Temp	.600@80F
Rmt @ Meas. Temp	.450280F
Rmc @ Meas. Temp	.720@80F
Source of Rmf / Rmc	MEASUREMENT
Rm @ BHT	.369@130F
Time Circulation Stopped	5.5 HOURS
Time Logger on Bottom	9:45 P.M.
Maximum Recorded Temperature	130F
Equipment Number	4010
Location	HAYS, KANSAS
Recorded By	JEFF LUEBBERS
Witnessed By	DAVE BARKER

<<< Fold Here >>>

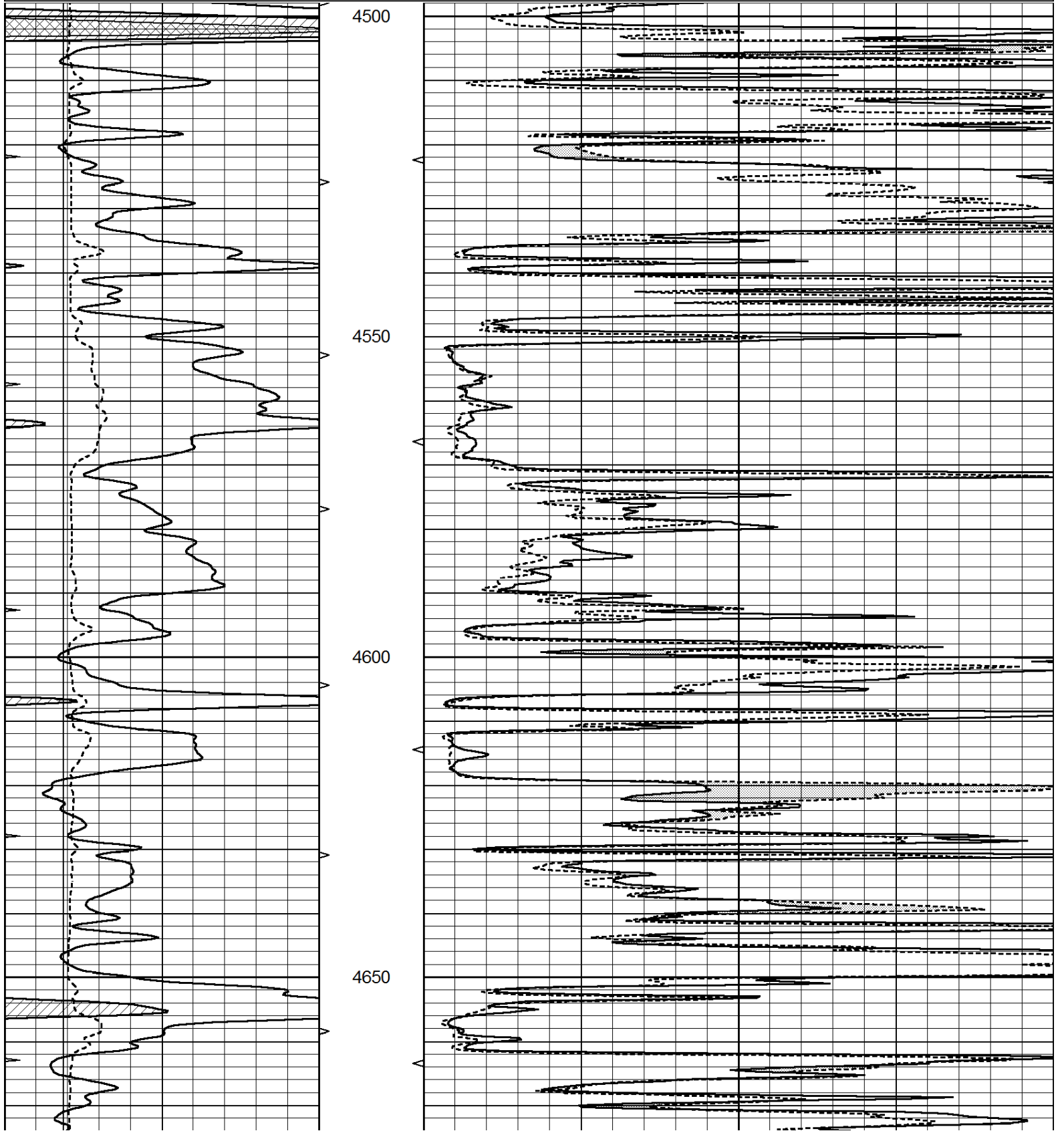
All interpretations are opinions based on inferences from electrical or other measurements and we cannot and do not guarantee the accuracy or correctness of any interpretation, and we shall not, except in the case of gross or willful negligence on our part, be liable or responsible for any loss, costs, damages, or expenses incurred or sustained by anyone resulting from any interpretation made by any of our officers, agents or employees. These interpretations are also subject to our general terms and conditions set out in our current Price Schedule.

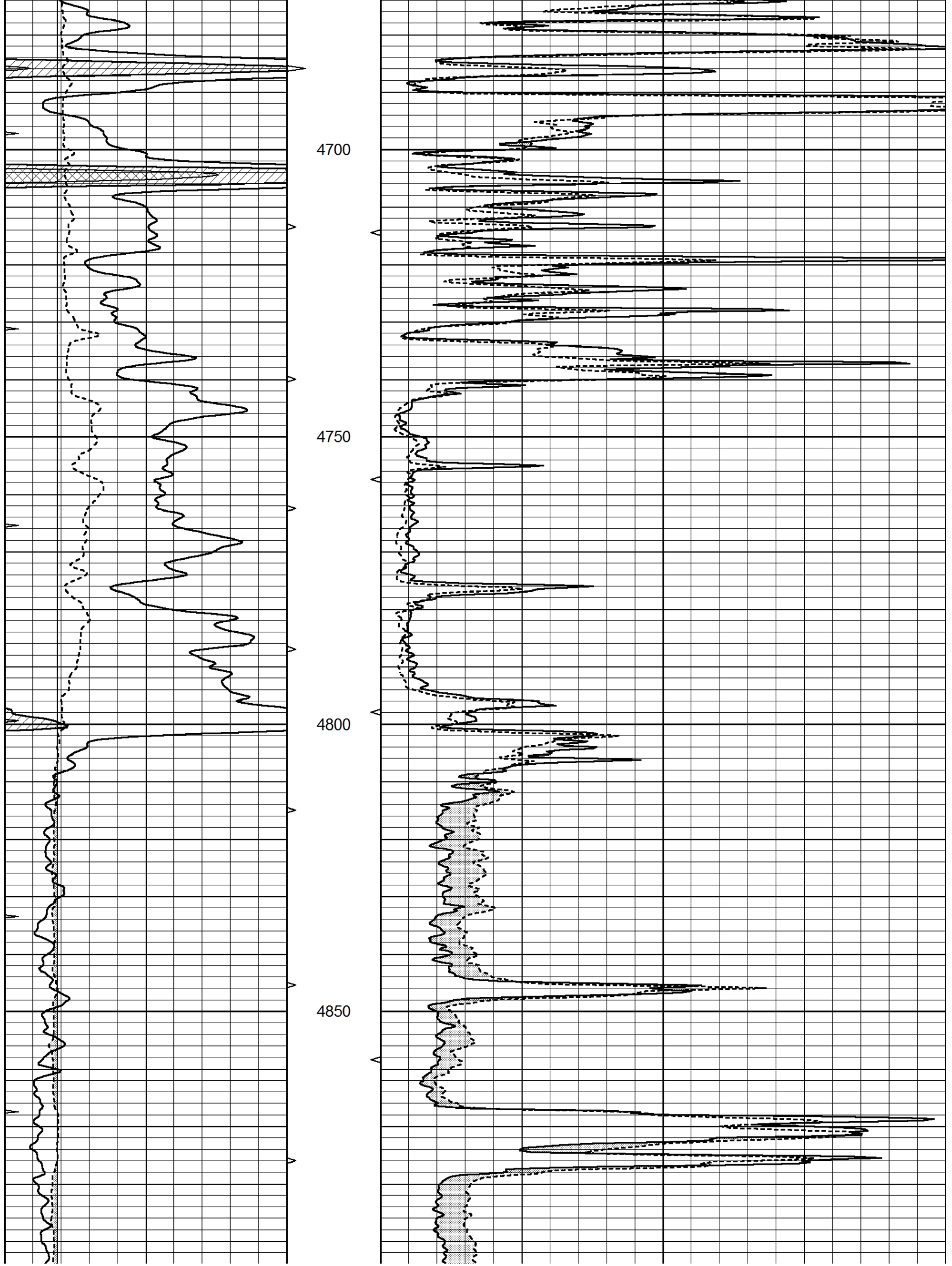
Comments

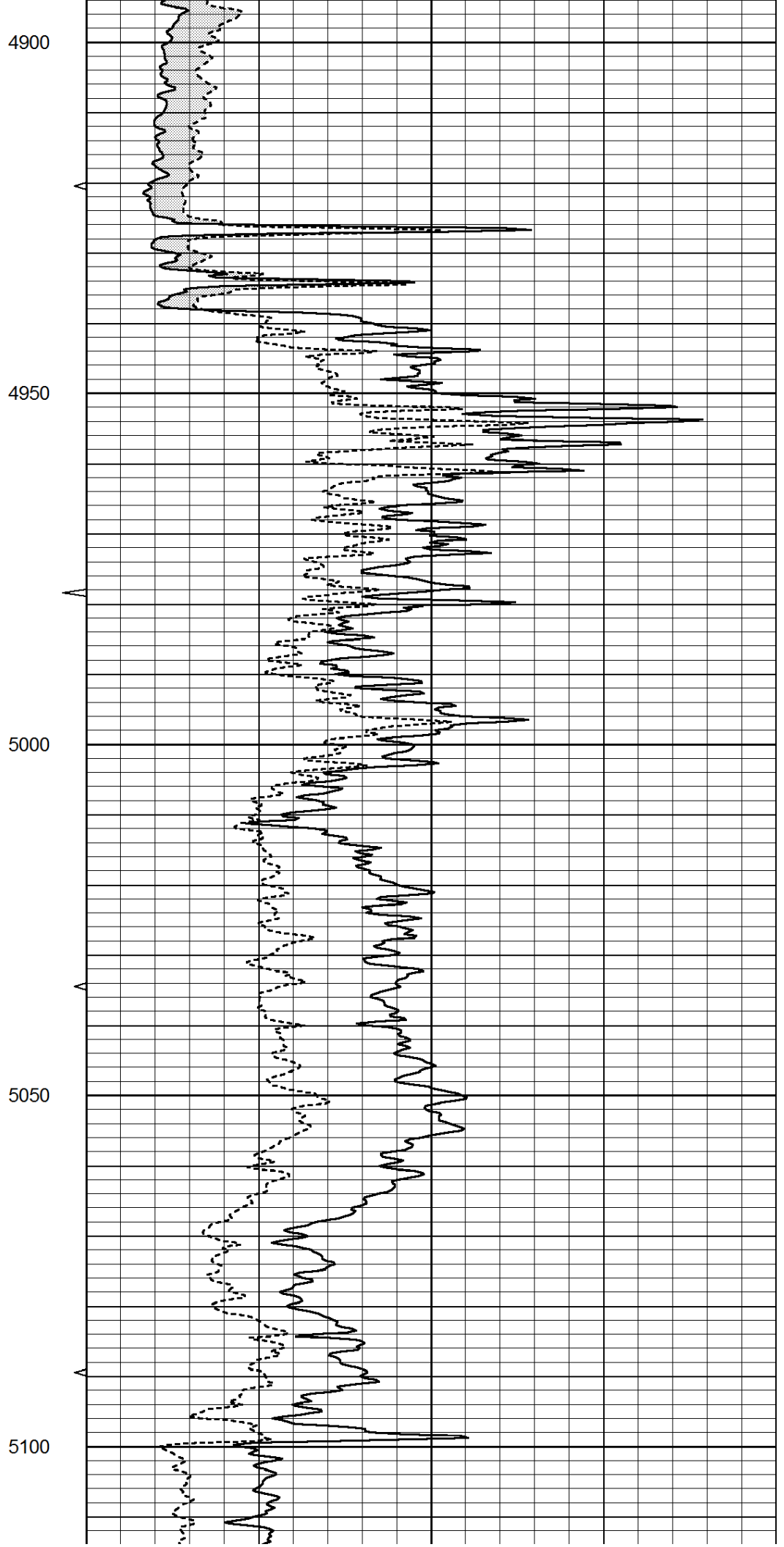
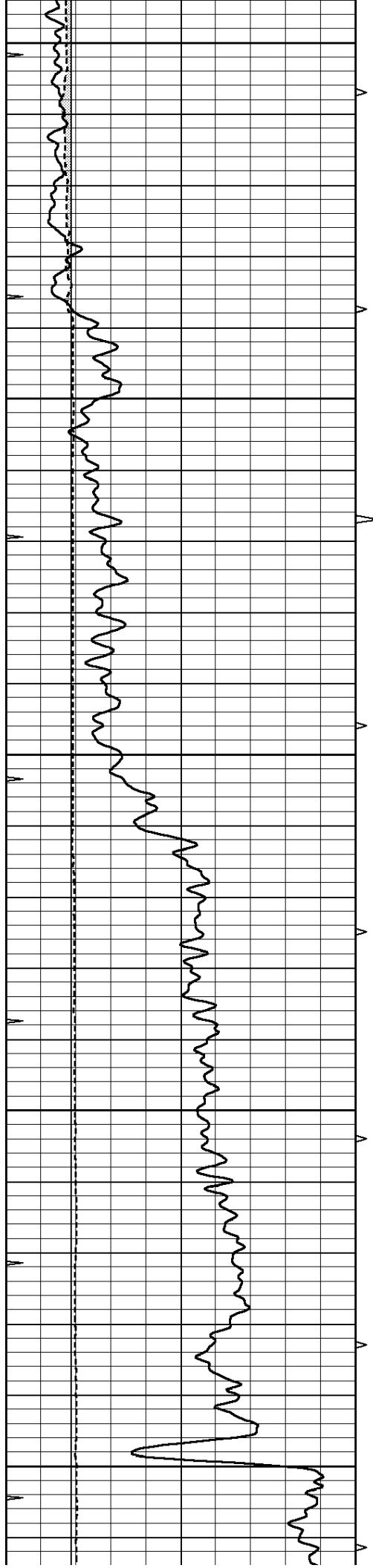
THANK YOU FOR USING "NABORS" HAYS, KS.(785) 628-6395
DIRECTIONS
KIOWA, KS. 1/2 W. ON HWY 2, @CURVE, 1S. ON "BARE RD.", W. INTO

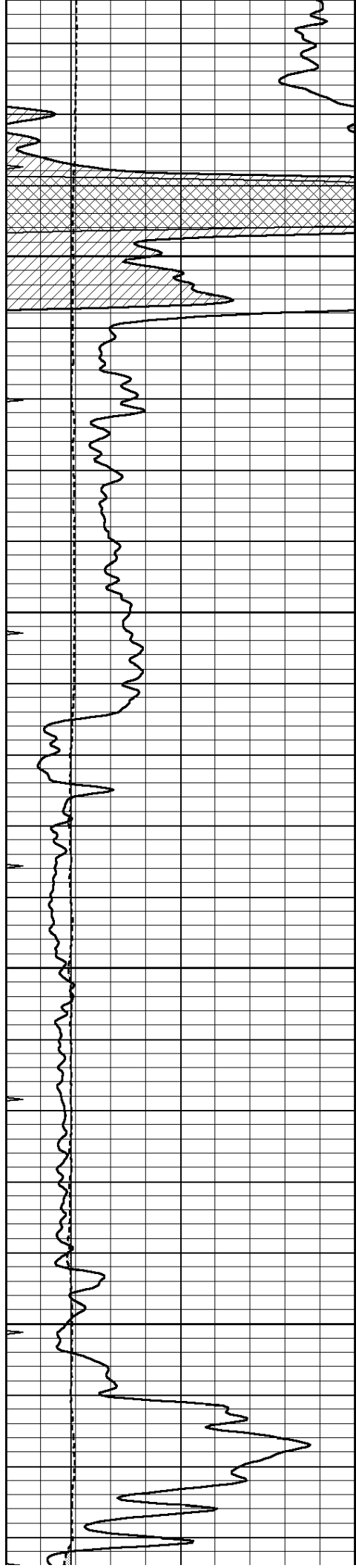
Database File: 409698pe.db
 Dataset Pathname: pass6.5
 Presentation Format: micro
 Dataset Creation: Mon Oct 22 01:32:55 2012
 Charted by: Depth in Feet scaled 1:240

0	GAMMA RAY (GAPI)	150	ABHV	0	MEL1.5 (Ohm-m)	40
6	CALIPER (in)	16	10 (ft3)	0	MEL2.0 (Ohm-m)	40
0	MINMK	20	TBHV			
			0 (ft3)	10		







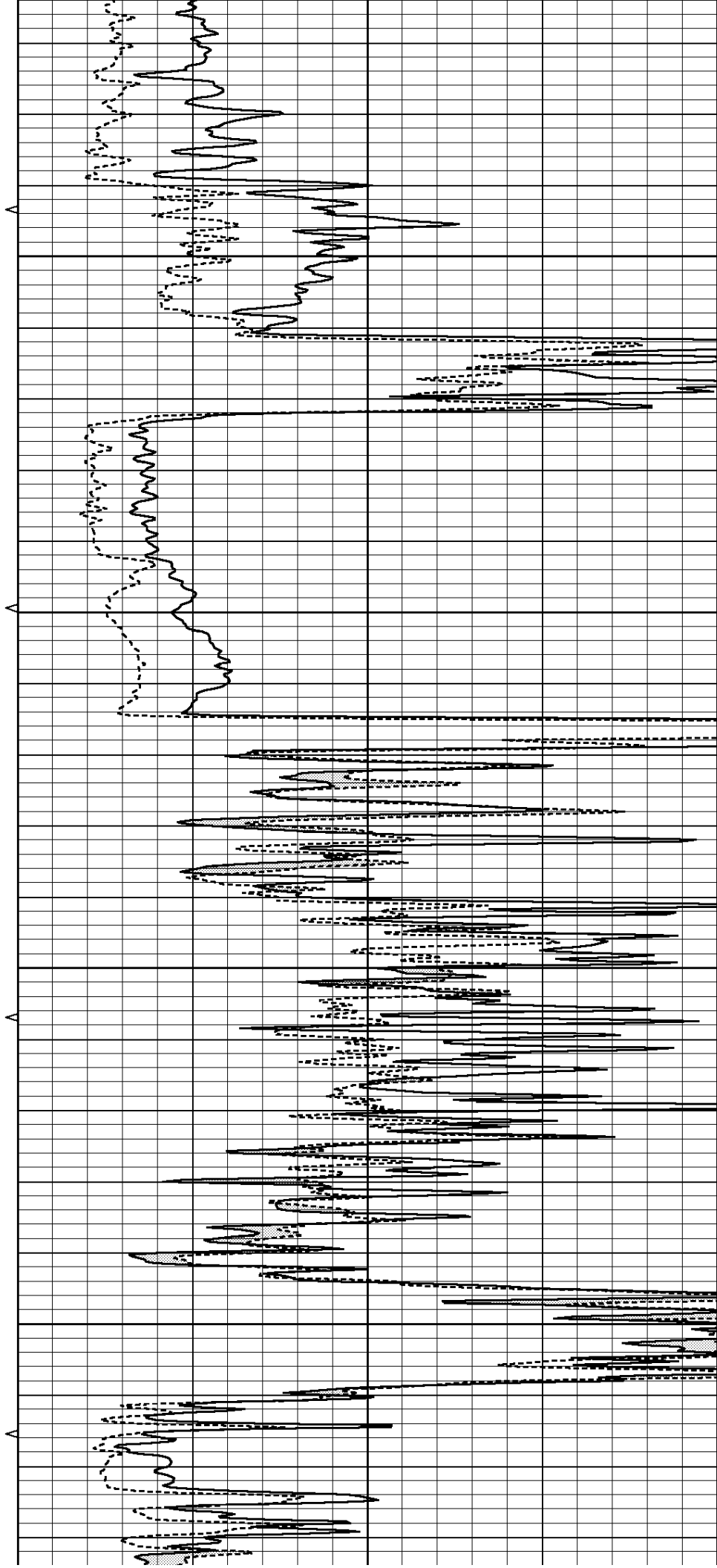


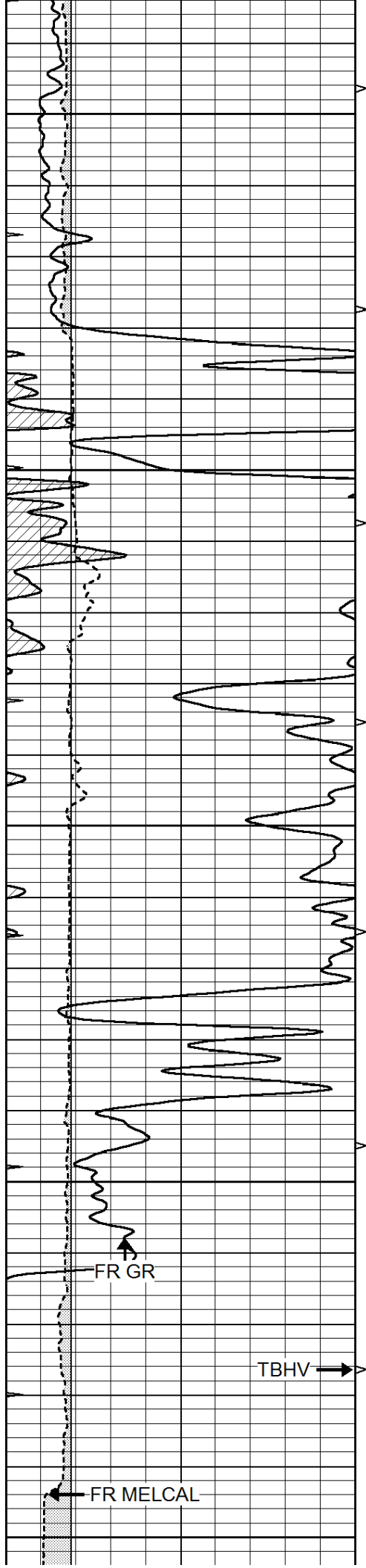
5150

5200

5250

5300





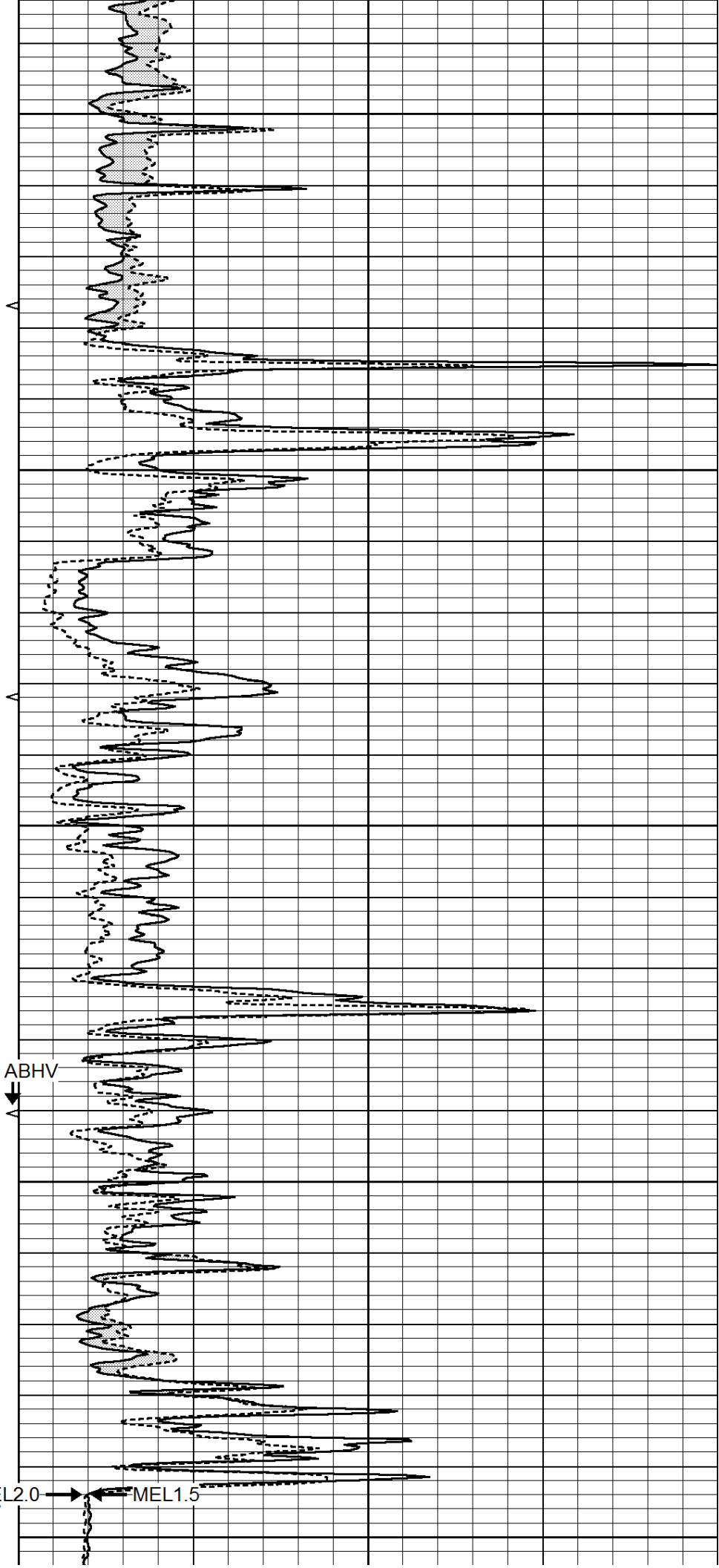
5350

5400

5450

5500

5550



5.5" ABHV

LTD 5 MEL2.0

MEL1.5

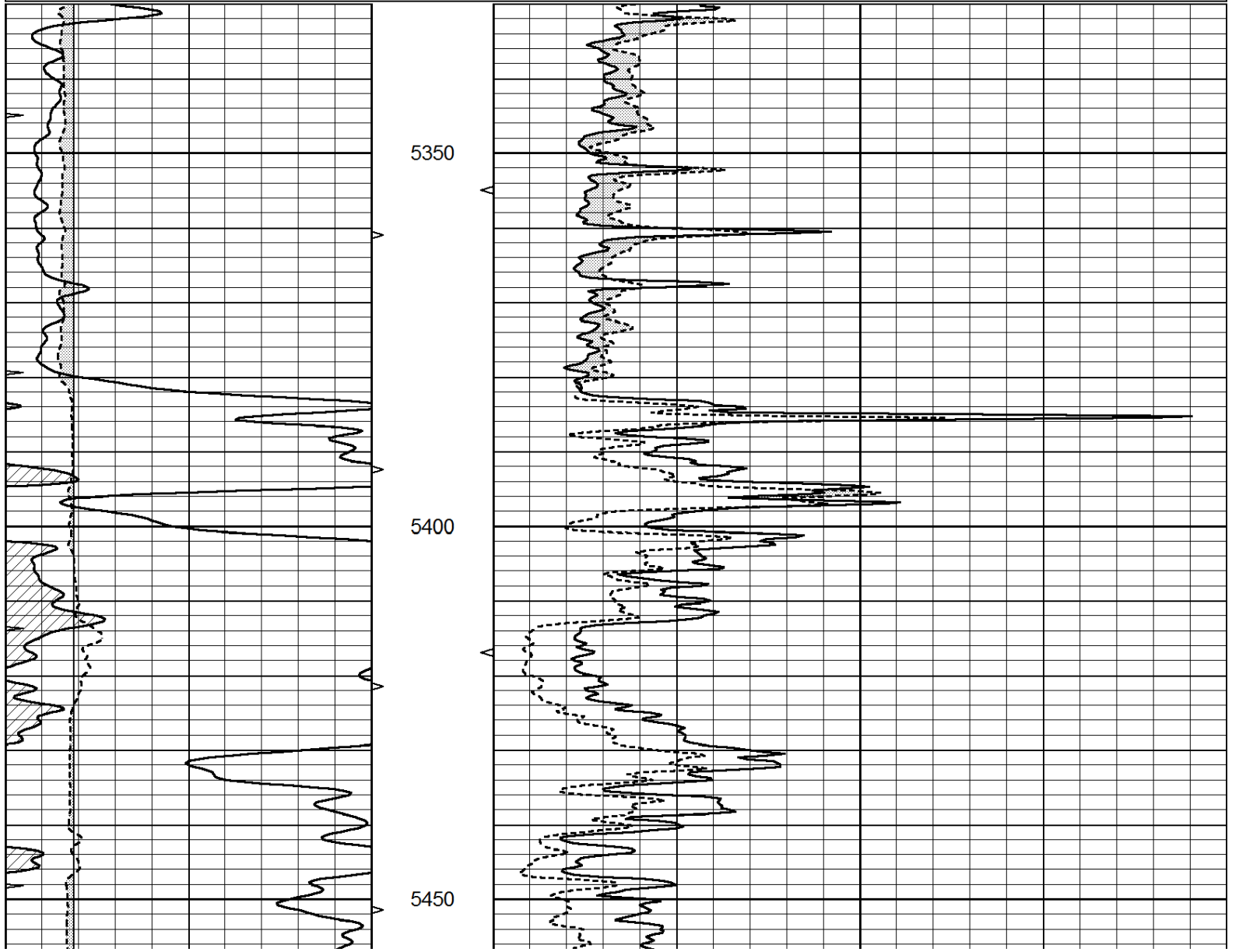
0	GAMMA RAY (GAPI)	150	ABHV	0	MEL1.5 (Ohm-m)	40
6	CALIPER (in)	16	10 (ft3)	0	MEL2.0 (Ohm-m)	40
0	MINMK	20	TBHV			
			0 (ft3)	10		

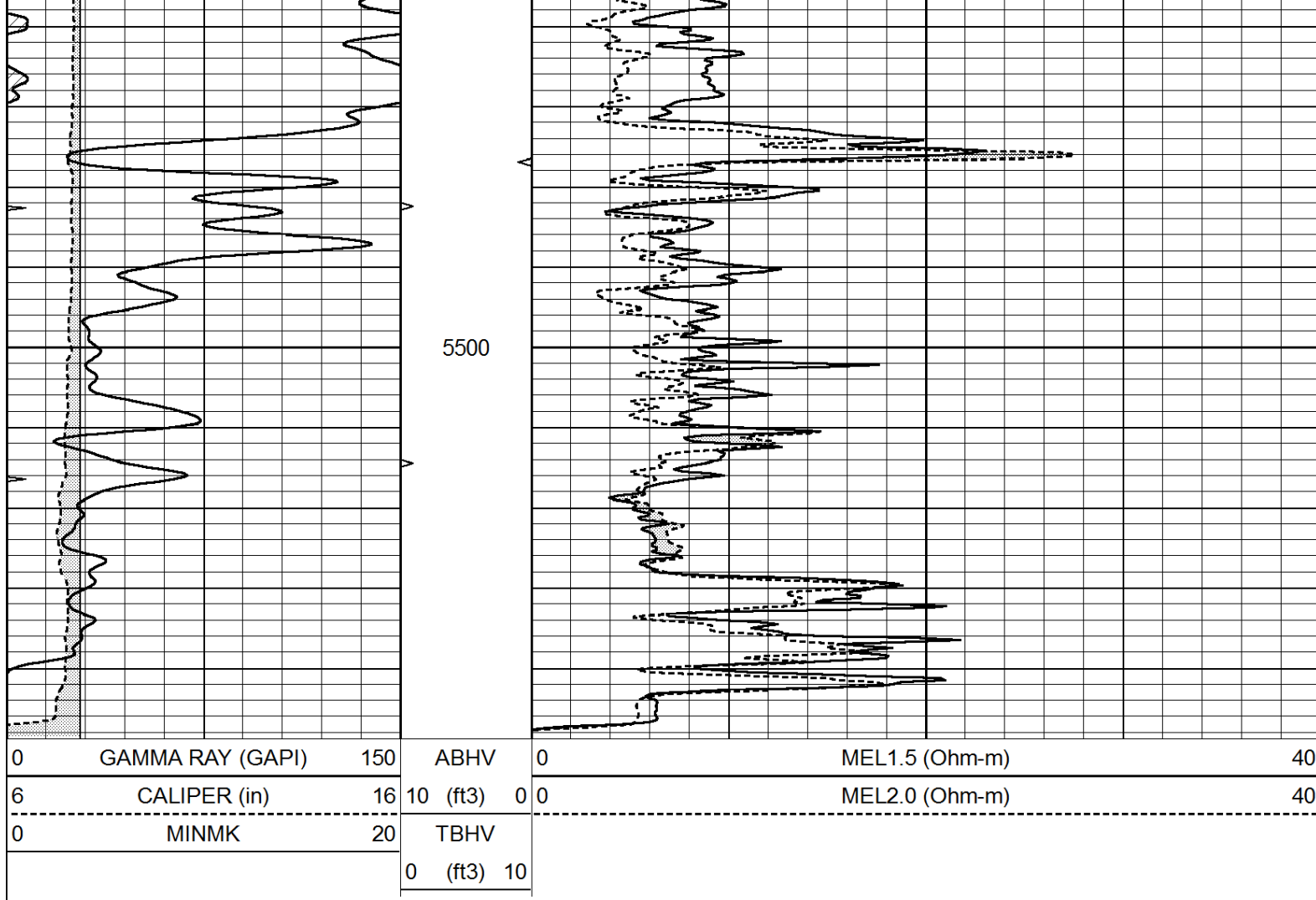


REPEAT SECTION

Database File: 409698pe.db
 Dataset Pathname: pass5.4
 Presentation Format: micro
 Dataset Creation: Mon Oct 22 01:15:30 2012 by Calc Open-Cased 110302
 Charted by: Depth in Feet scaled 1:240

0	GAMMA RAY (GAPI)	150	ABHV	0	MEL1.5 (Ohm-m)	40
6	CALIPER (in)	16	10 (ft3)	0	MEL2.0 (Ohm-m)	40
0	MINMK	20	TBHV			
			0 (ft3)	10		





Calibration Report

Database File: 409698pe.db
 Dataset Pathname: pass6.5
 Dataset Creation: Mon Oct 22 01:32:55 2012

MICRO Calibration Report

Serial Number: 2
 Tool Model: PROBE
 Performed: Mon Oct 22 00:55:27 2012

Caliper Calibration: Gain=3.753 Offset=4.357

References	Low Cal	High Cal
Readings	8.600	15.000
	1.130	2.835

1.5" Calibration: Gain=32.000 Offset=-0.800

References	Low Cal	High Cal
Readings	0.000	20.000
	0.065	1.210

2" Calibration: Gain=44.000 Offset=-0.400

References	Low Cal	High Cal
Readings	0.000	20.000
	0.012	1.043

Gamma Ray Calibration Report

Serial Number: GR4

Tool Model:

OPEN

Performed:

Mon Oct 22 00:55:23 2012

Calibrator Value:

200.0

GAPI

Background Reading:

0.0

cps

Calibrator Reading:

189.0

cps

Sensitivity:

1.6000

GAPI/cps