



Pioneer Energy Services

Radiation Guard Log

15-135-25527-00-00

API No.

Company **Palomino Petroleum, Inc.**
 Well **Rebel # 1**
 Field **Wildcat**
 County **Ness** State **Kansas**

Location **1270' FSL & 960' FWL**

Other Services

Sec: **14** Twp: **19 S** Rge: **25 W**

Elevation

Permanent Datum **Ground Level** Elevation **2388**
 Log Measured From **Kelly Bushing** 10 Ft. Above Perm. Datum
 Drilling Measured From **Kelly Bushing**

K.B. 2398
 D.F. G.L. 2388

Date **01/24/2013**

Run Number **One**

Depth Driller **4540**

Depth Logger **4540**

Bottom Logged Interval **4539**

Top Log Interval **200**

Casing Driller **8.625 @ 222**

Casing Logger **221**

Bit Size **7.875**

Type Fluid in Hole **Chemical**

Salinity, ppm CL **3200**

Density / Viscosity **9.5 43**

pH / Fluid Loss **10.5 7.2**

Source of Sample **Flowline**

Rm @ Meas. Temp **1.4 @ 48**

Rmf @ Meas. Temp **1.05 @ 48**

Rmc @ Meas. Temp **1.89 @ 48**

Source of Rmf / Rmc **Charts**

Rm @ BHT **0.45 @ 123**

Operating Rig Time **3 Hours**

Max Rec. Temp. F **123**

Equipment Number **91**

Location **Hays**

Recorded By **D. Schmidt**

Witnessed By **Ryan Seib**

<<< Fold Here >>>

All interpretations are opinions based on inferences from electrical or other measurements and we cannot and do not guarantee the accuracy or correctness of any interpretation, and we shall not, except in the case of gross or willful negligence on our part, be liable or responsible for any loss, costs, damages, or expenses incurred or sustained by anyone resulting from any interpretation made by any of our officers, agents or employees. These interpretations are also subject to our general terms and conditions set out in our current Price Schedule.

Comments

Thank you for using Pioneer Energy Services
www.pioneerres.com
 785 625 3858
 Ness City,
 8 West to J Rd, 4 South, 1/4 East,
 North Into

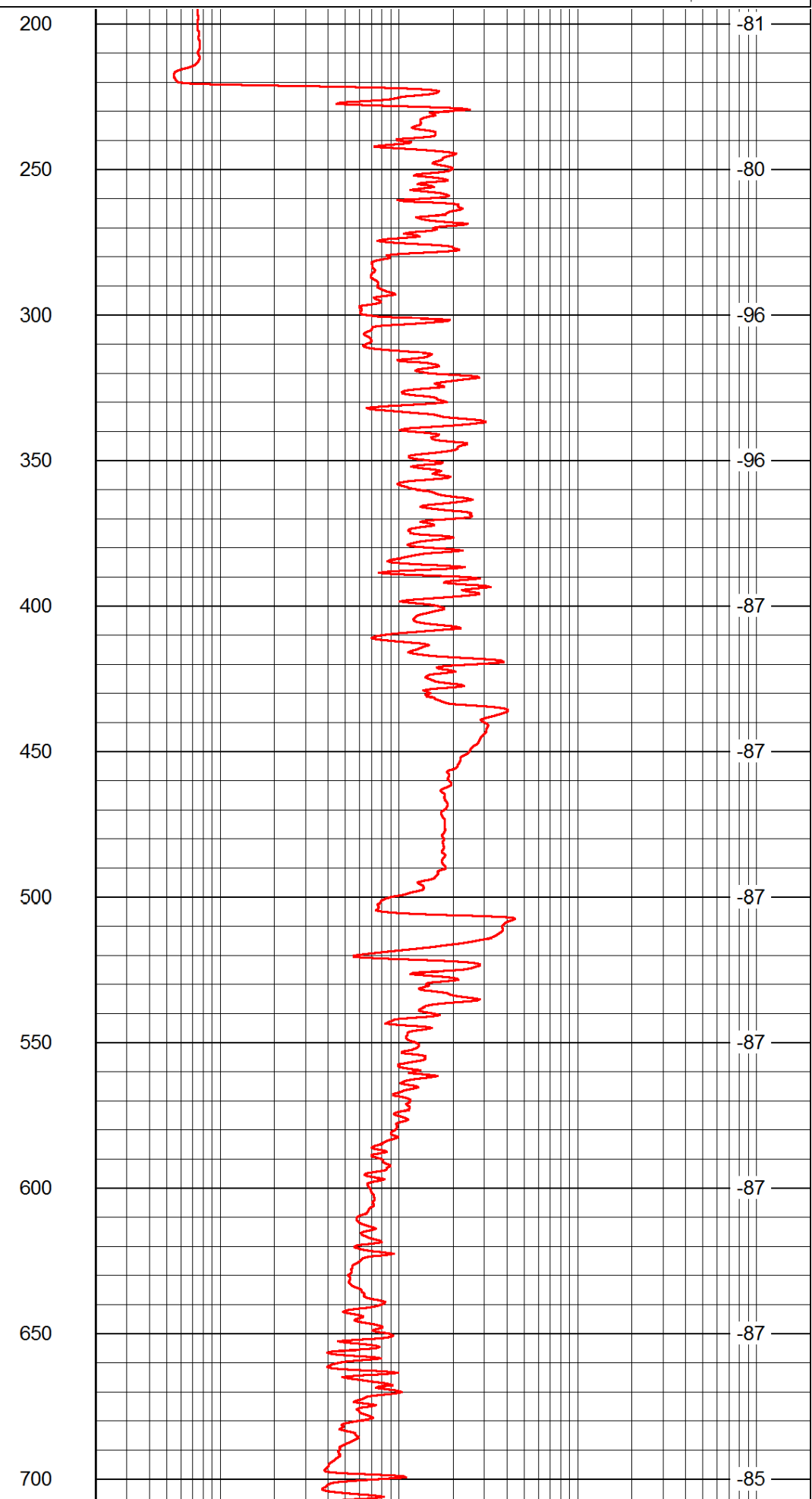
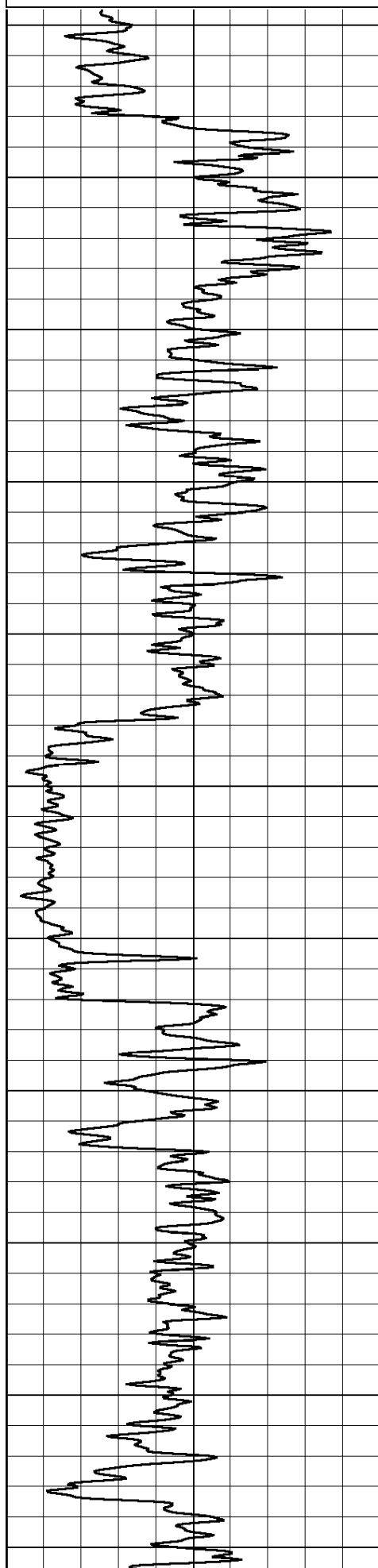
Database File: c:\warrior\data\palomino_rebel # 1\palomino_012413hd.db
 Dataset Pathname: rag/palrag
 Presentation Format: rag2in
 Dataset Creation: Thu Jan 24 18:35:04 2013
 Charted by: Depth in Feet scaled 1:600

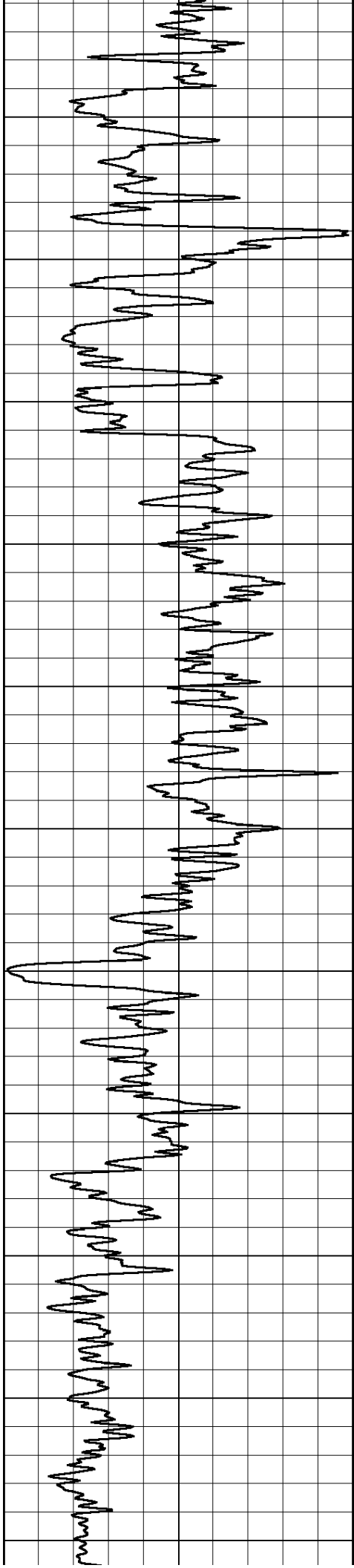
0 Gamma Ray 150

0.2 lgrd

2000

LSPD





750

800

850

900

950

1000

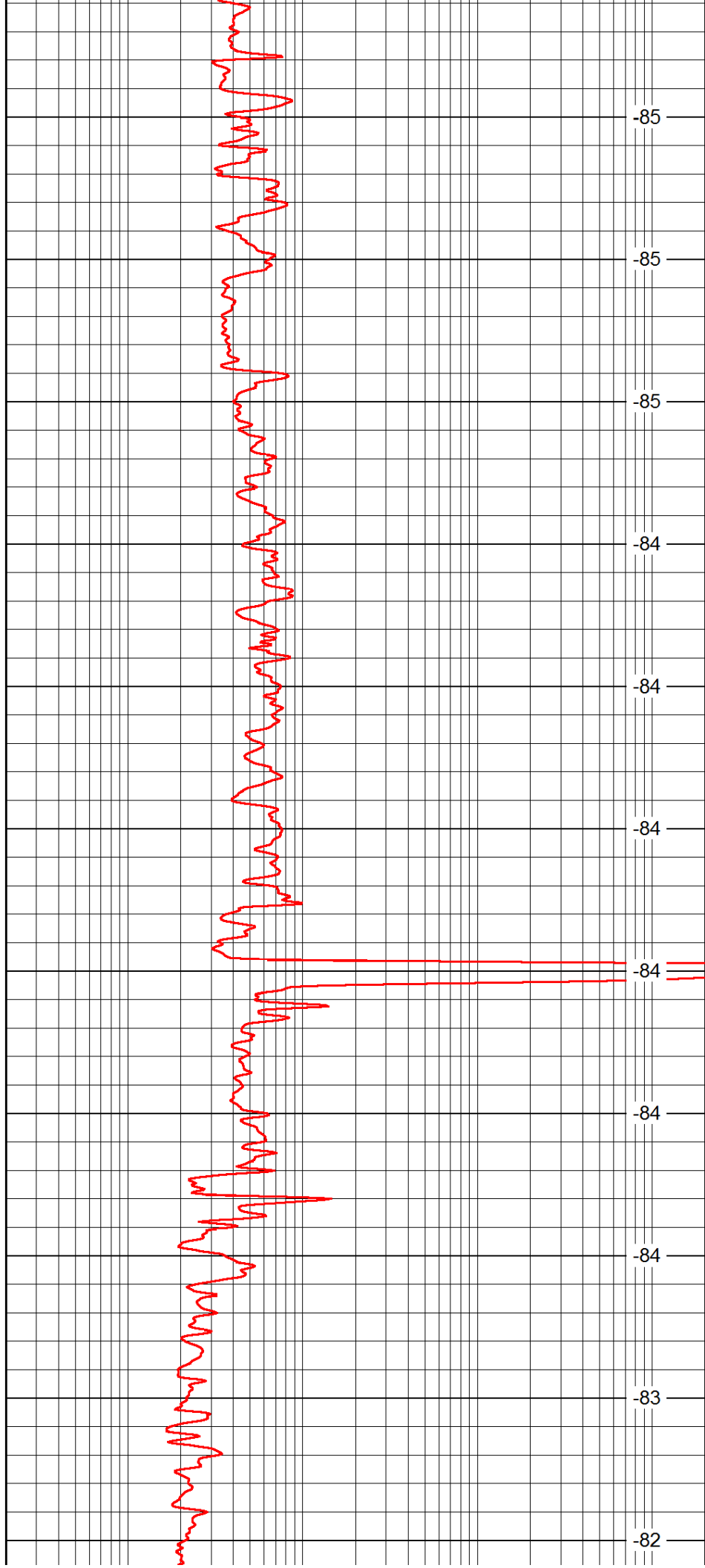
1050

1100

1150

1200

1250



-85

-85

-85

-84

-84

-84

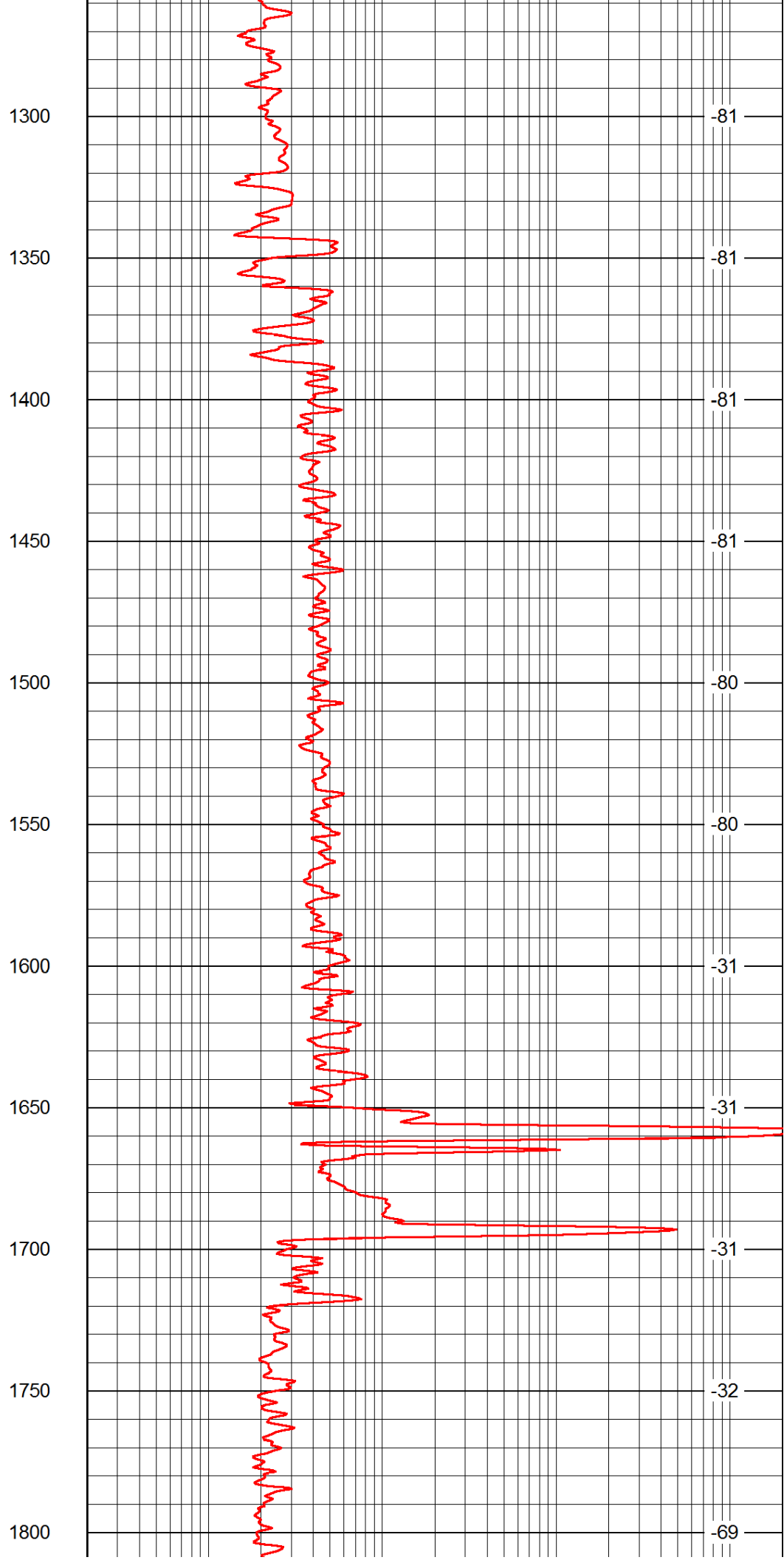
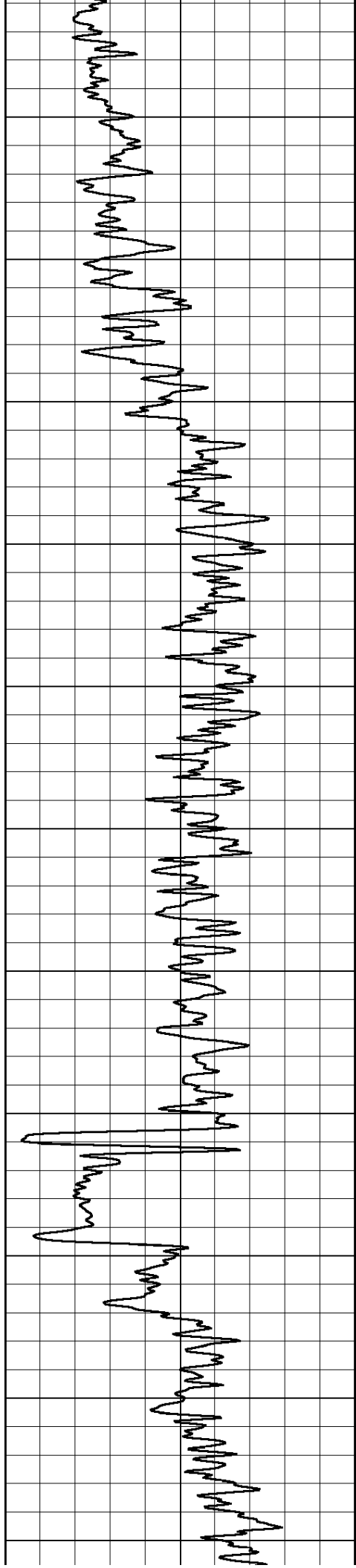
-84

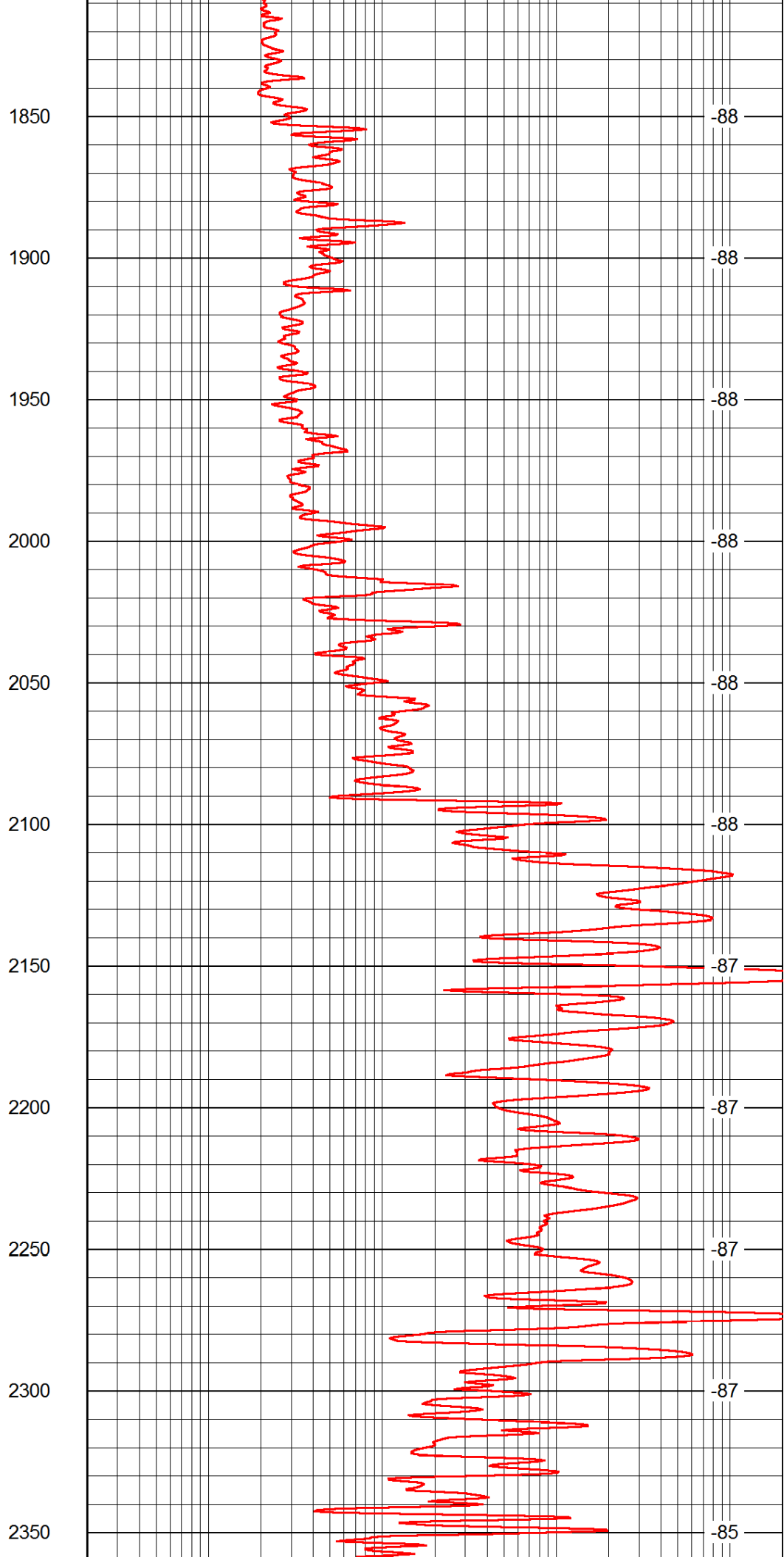
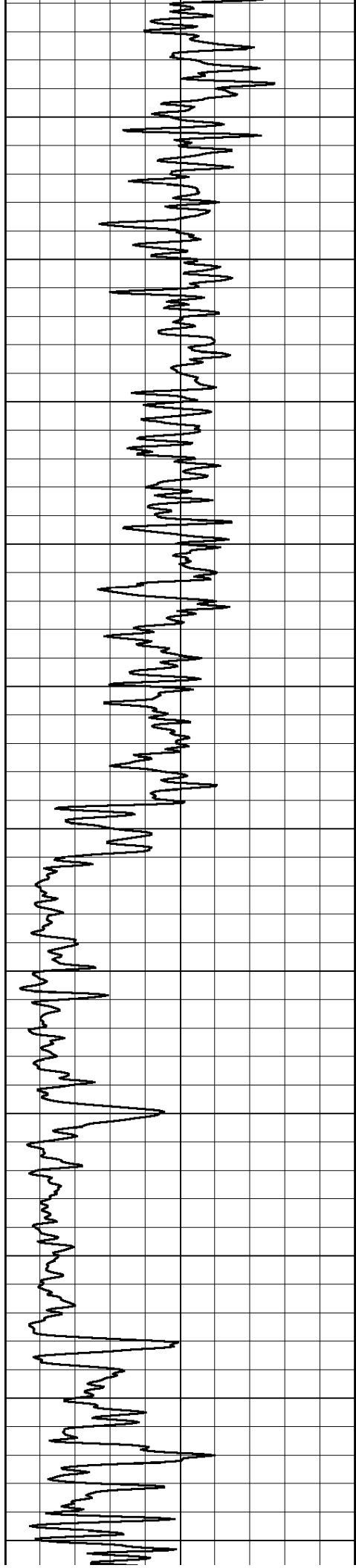
-84

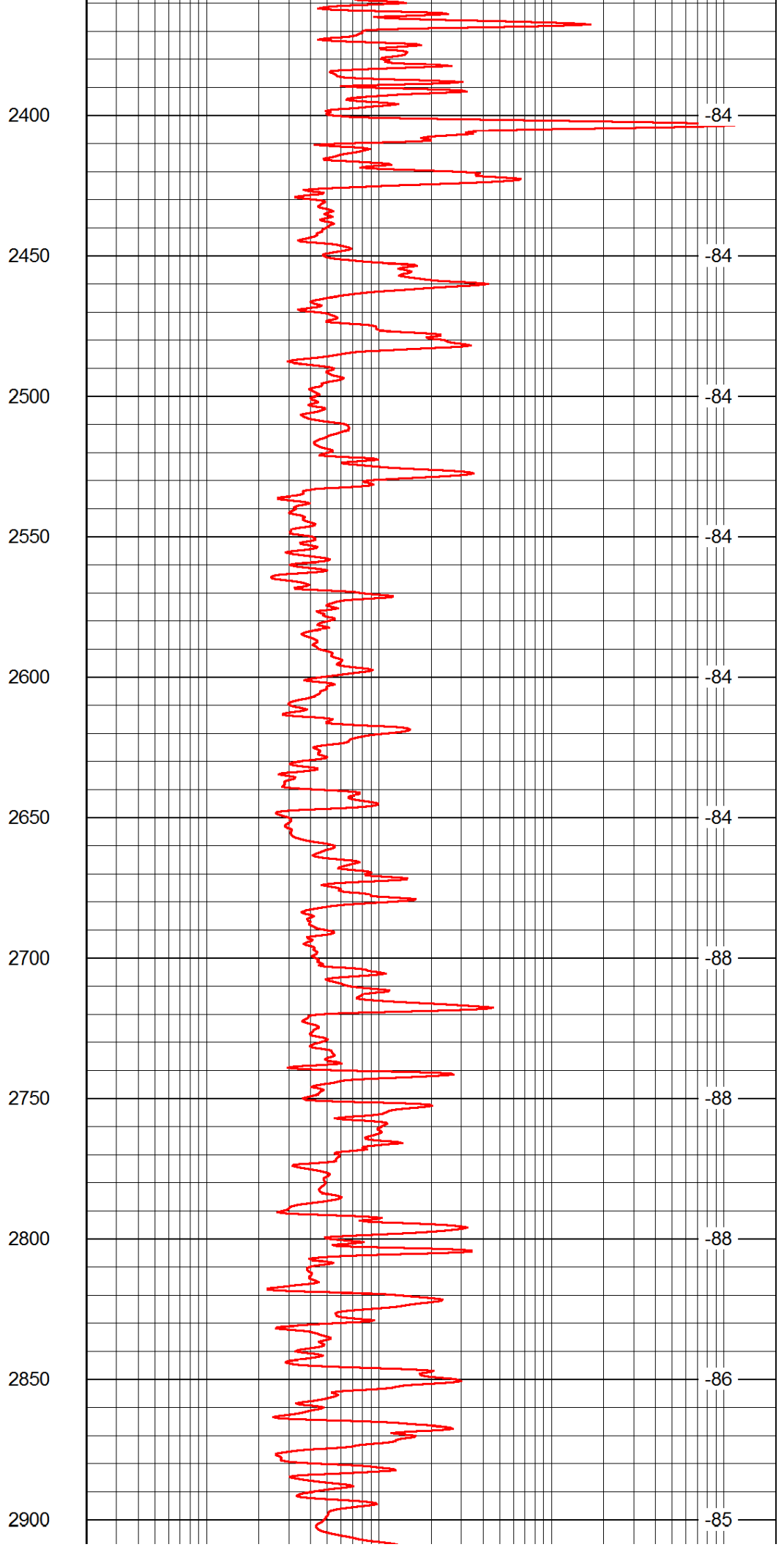
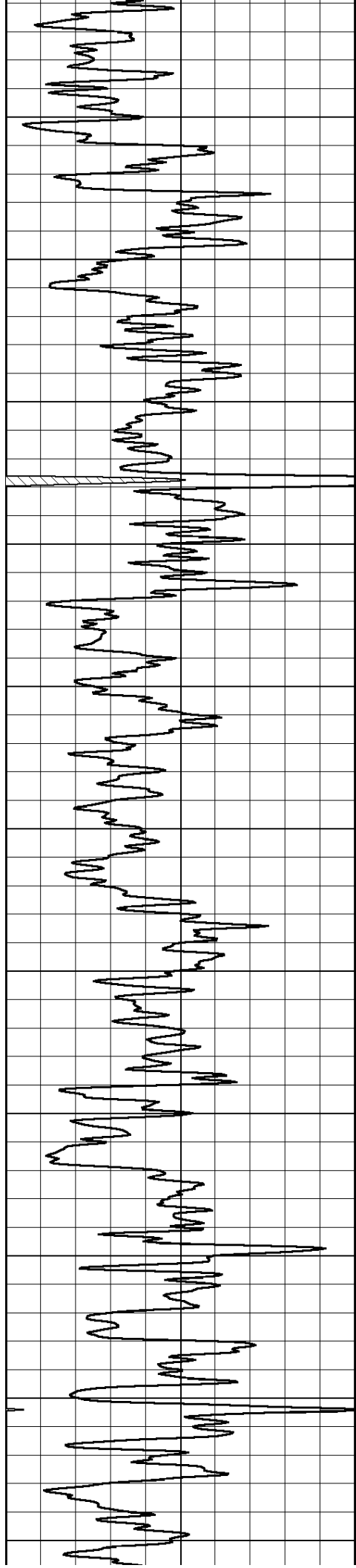
-84

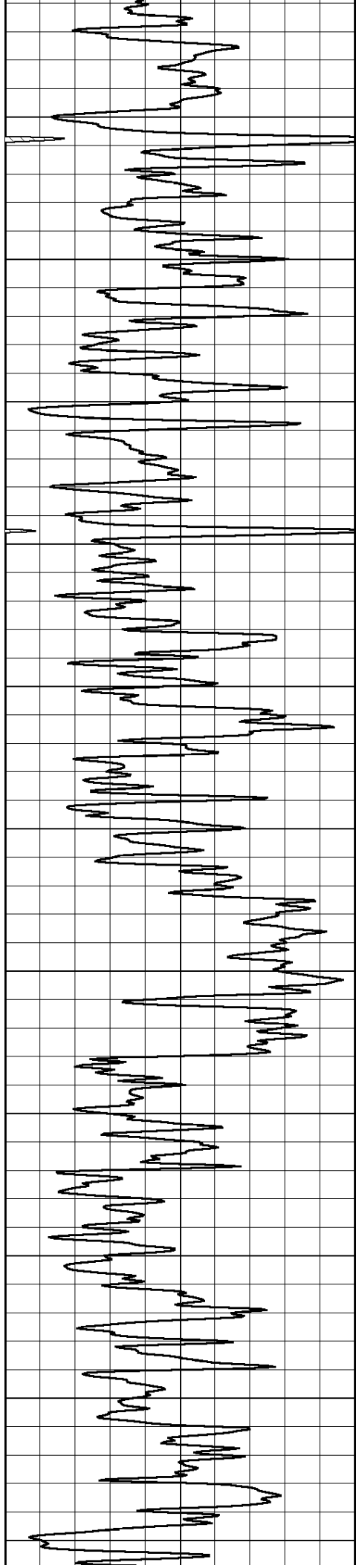
-83

-82









2950

3000

3050

3100

3150

3200

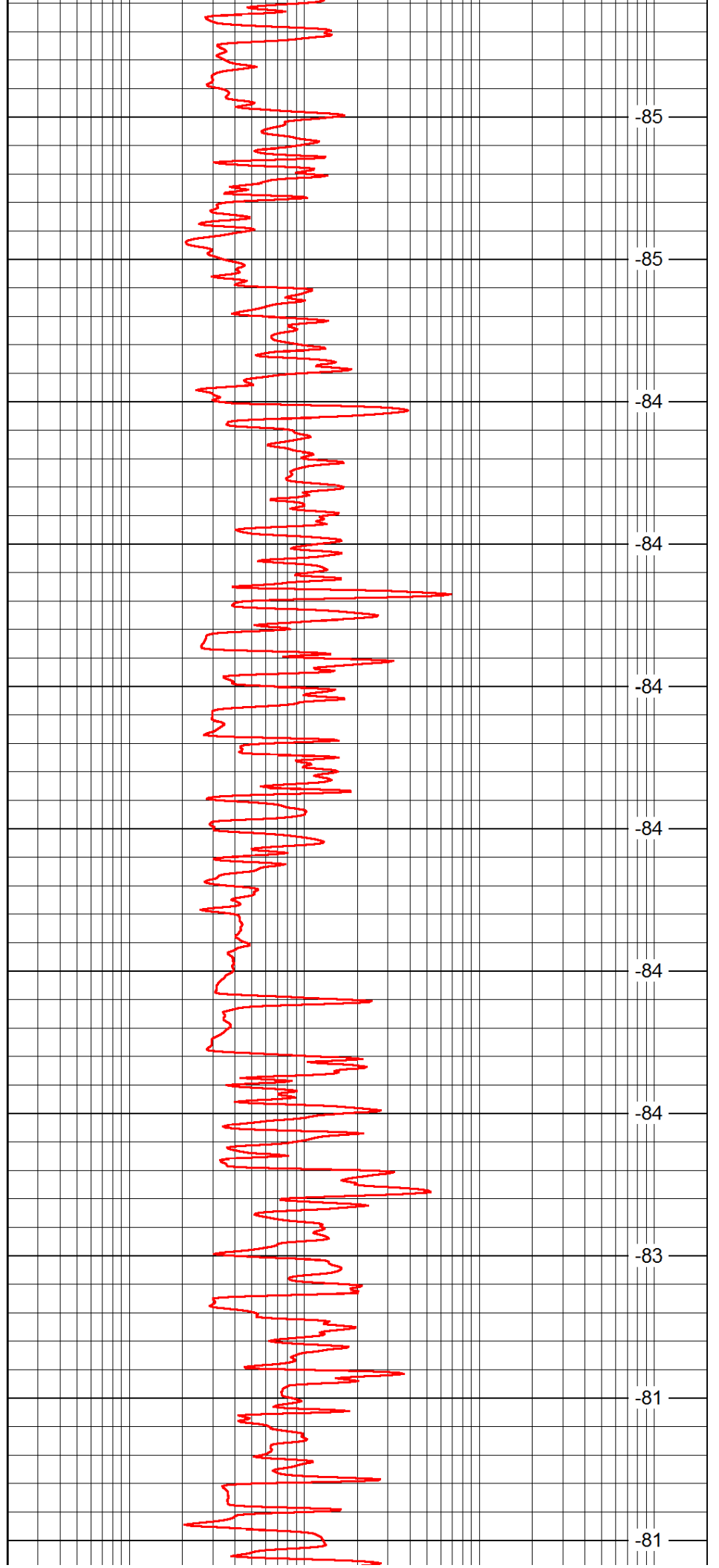
3250

3300

3350

3400

3450



-85

-85

-84

-84

-84

-84

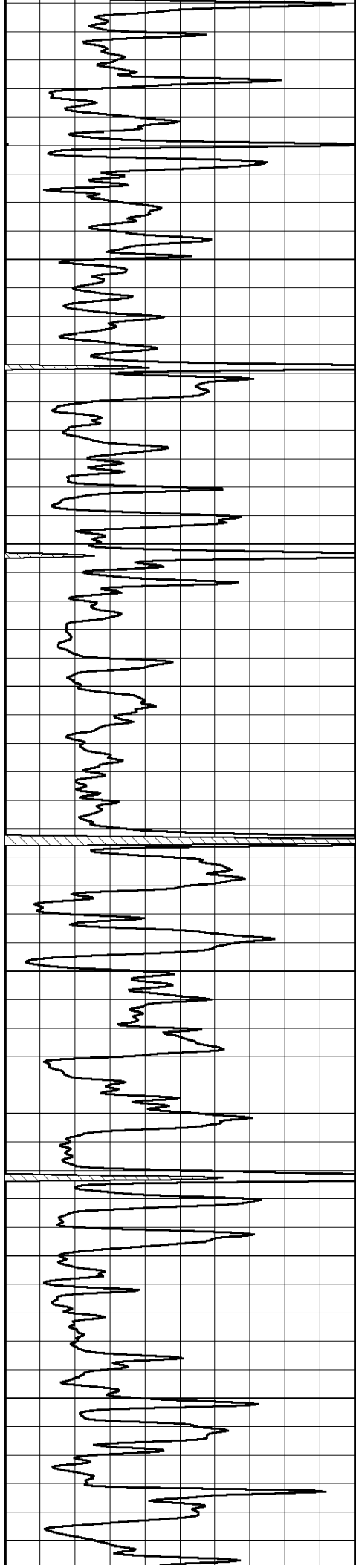
-84

-84

-83

-81

-81



3500

3550

3600

3650

3700

3750

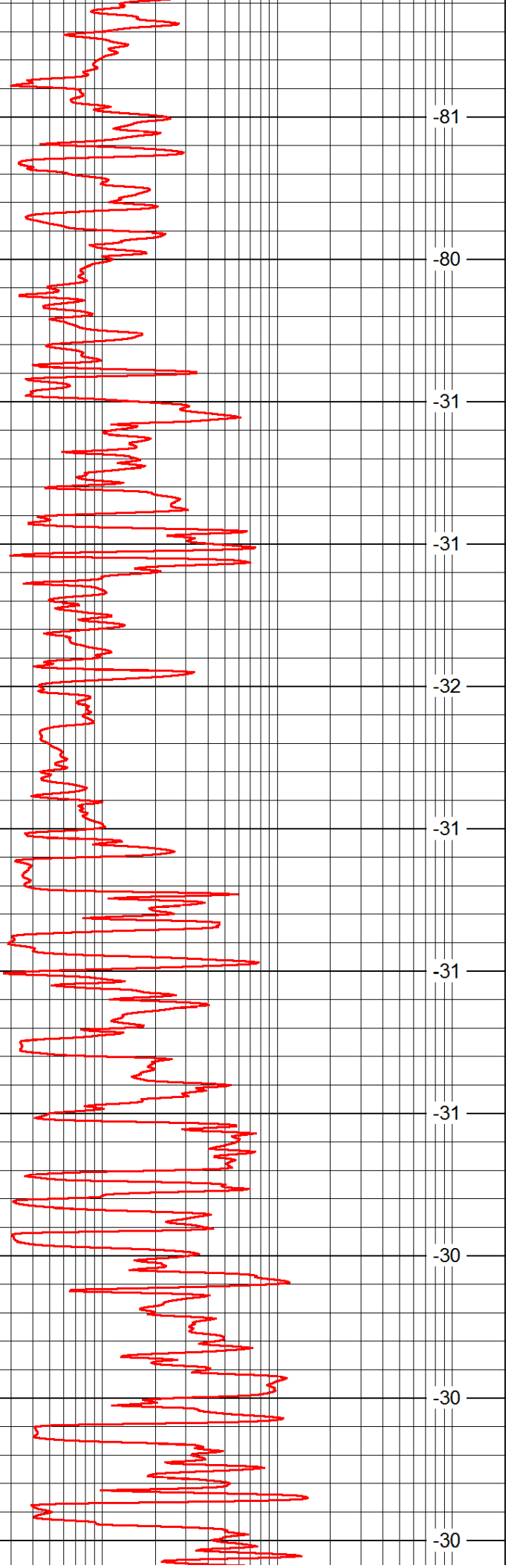
3800

3850

3900

3950

4000



-81

-80

-31

-31

-32

-31

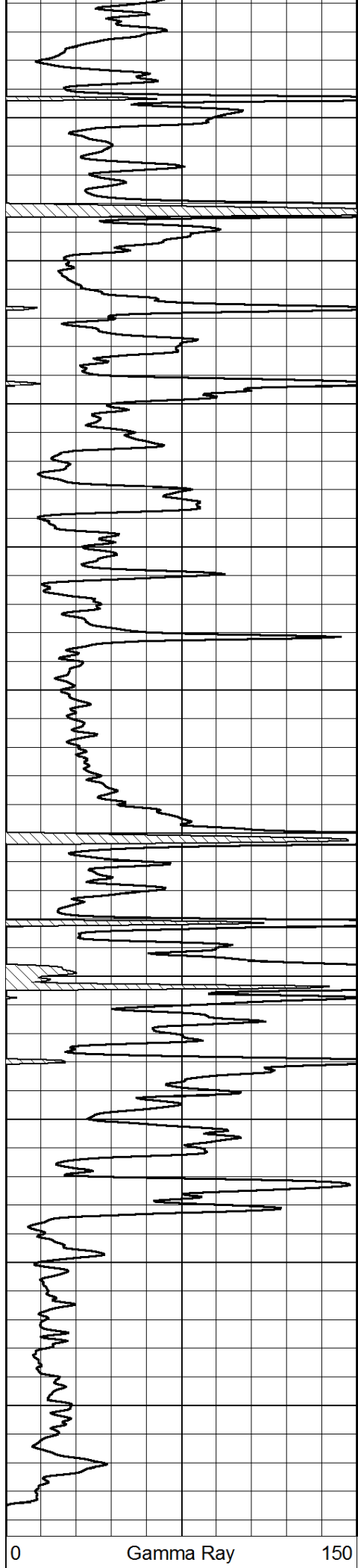
-31

-31

-30

-30

-30



4050

4100

4150

4200

4250

4300

4350

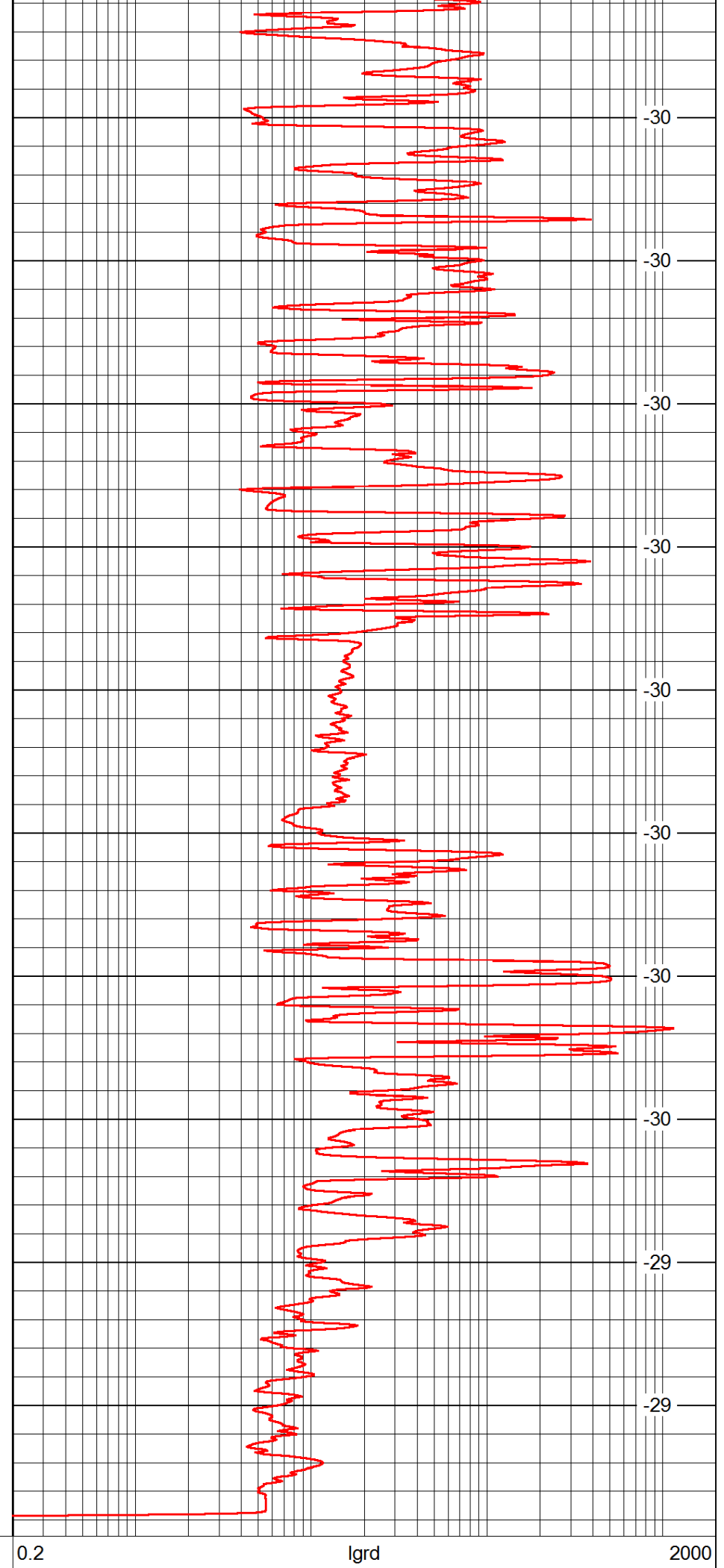
4400

4450

4500

Gamma Ray

150



-30

-30

-30

-30

-30

-30

-30

-30

-29

-29

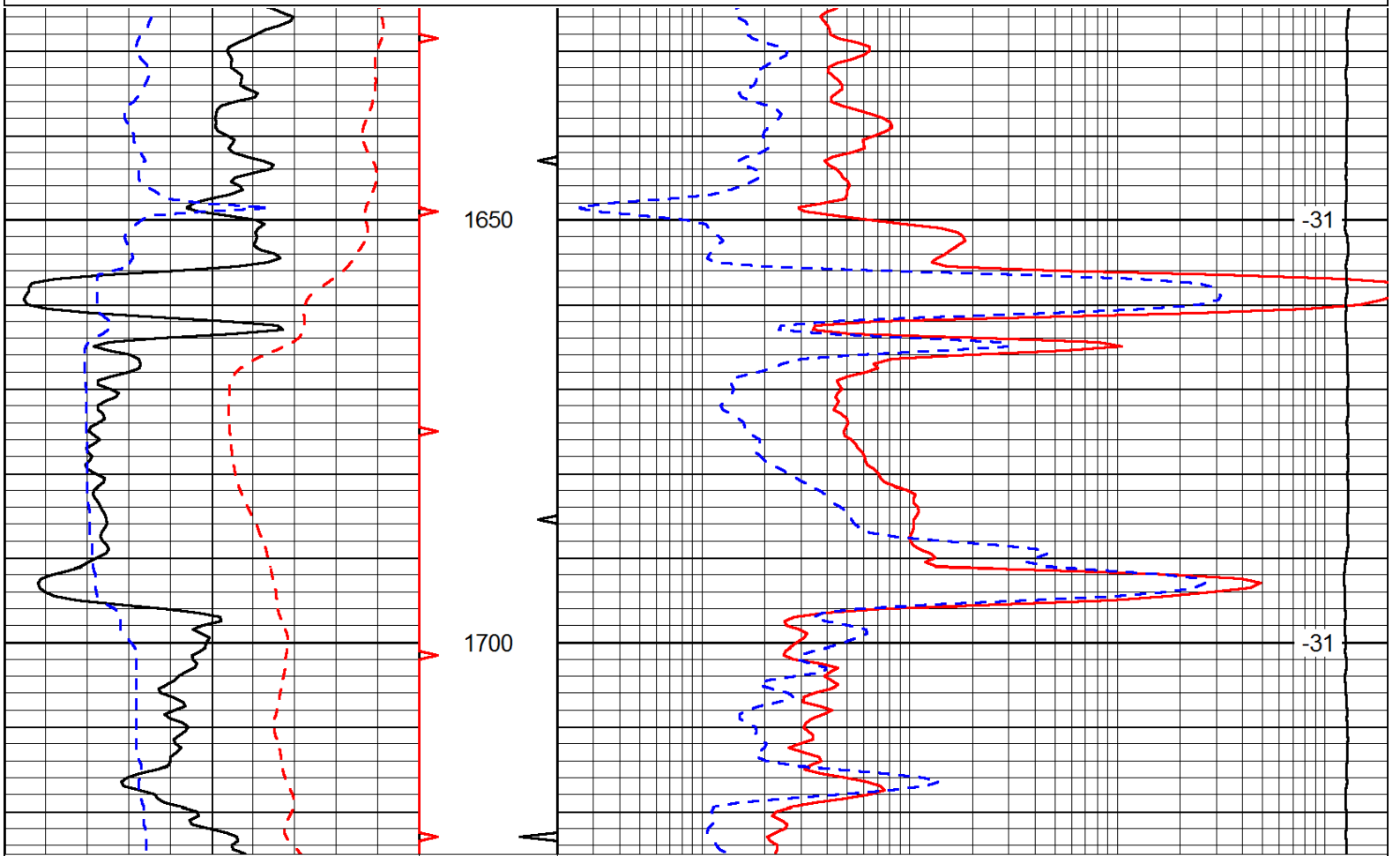
lgd

2000

Database File: c:\warrior\data\palomino_rebel # 1\palomino_012413hd.db
 Dataset Pathname: rag/palrag
 Presentation Format: rag
 Dataset Creation: Thu Jan 24 18:35:04 2013
 Charted by: Depth in Feet scaled 1:240

0	Gamma Ray	150	0.2	Long Guard	2000
6	Caliper (GAPI)	16	560	Neuton	2160
-200	SP (mV)	0	15000	Line Tension	0

LSPD



0	Gamma Ray	150	0.2	Long Guard	2000
6	Caliper (GAPI)	16	560	Neuton	2160
-200	SP (mV)	0	15000	Line Tension	0

LSPD

Database File: c:\warrior\data\palomino_rebel # 1\palomino_012413hd.db
 Dataset Pathname: rag/palrag
 Presentation Format: rag
 Dataset Creation: Thu Jan 24 18:35:04 2013
 Charted by: Depth in Feet scaled 1:240

0	Gamma Ray	150	0.2	Long Guard	2000
6	Caliper (GAPI)	16	560	Neuton	2160
-200	SP (mV)	0	15000	Line Tension	0

LSPD

