



Pioneer Energy Services

# Radiation Guard Log

15-051-26478-00-00

API No.

Company Tomlinson Operating, LLC  
 Well Cleaveland #1  
 Field Leinmiller  
 County Ellis State Kansas

Location

1650' FSL & 2310' FWL

Sec: 2 Twp: 12 S Rge: 19 W

Other Services  
MEL/BHCS

Permanent Datum Ground Level Elevation 2112  
 Log Measured From Kelly Bushing 12 Ft. Above Perm. Datum  
 Drilling Measured From Kelly Bushing

Elevation  
K.B. 2124  
D.F. 2112  
G.L. 2112

Date	04-09-2013	
Run Number	One	
Depth Driller	3750	
Depth Logger	3749	
Bottom Logged Interval	3748	
Top Log Interval	300	
Casing Driller	8.625 @ 303	
Casing Logger	303	
Bit Size	7.875	
Type Fluid in Hole	Chemical	
Salinity, ppm CL	4000	
Density / Viscosity	9.2 48	
pH / Fluid Loss	10.5 7.8	
Source of Sample	Flowline	
Rm @ Meas. Temp	0.60 @ 44	
Rmf @ Meas. Temp	0.45 @ 44	
Rmc @ Meas. Temp	0.81 @ 44	
Source of Rmf / Rmc	Charts	
Rm @ BHT	0.23 @ 116	
Operating Rig Time	4 Hours	
Max Rec. Temp. F	116	
Equipment Number	91	
Location	Hays	
Recorded By	Y. Ruiz	D. Schmidt
Witnessed By	Bob O'Dell	

<<< Fold Here >>>

All interpretations are opinions based on inferences from electrical or other measurements and we cannot and do not guarantee the accuracy or correctness of any interpretation, and we shall not, except in the case of gross or willful negligence on our part, be liable or responsible for any loss, costs, damages, or expenses incurred or sustained by anyone resulting from any interpretation made by any of our officers, agents or employees. These interpretations are also subject to our general terms and conditions set out in our current Price Schedule.

### Comments

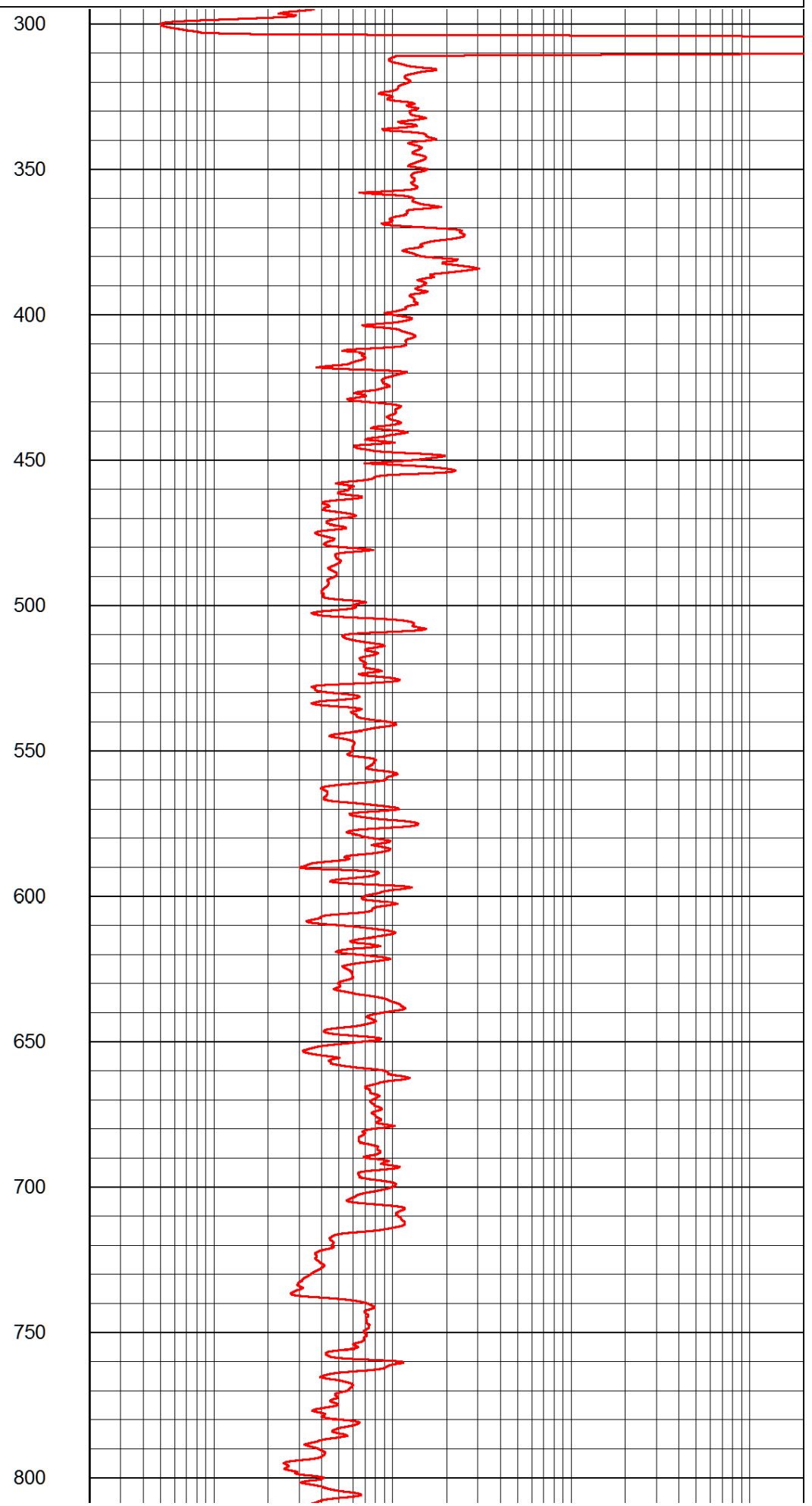
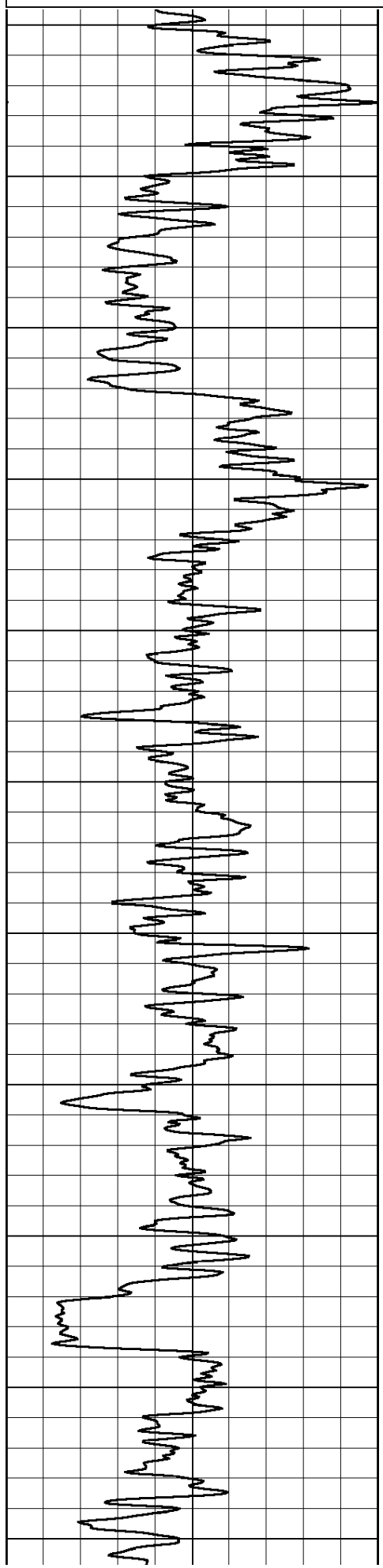
Thank you for using Log-Tech, Inc.  
 (785) 625-3858  
 Hays,  
 North to Buckeye, 4 West to Hyacinth Ave,  
 2 North, 1/2 West,  
 North into

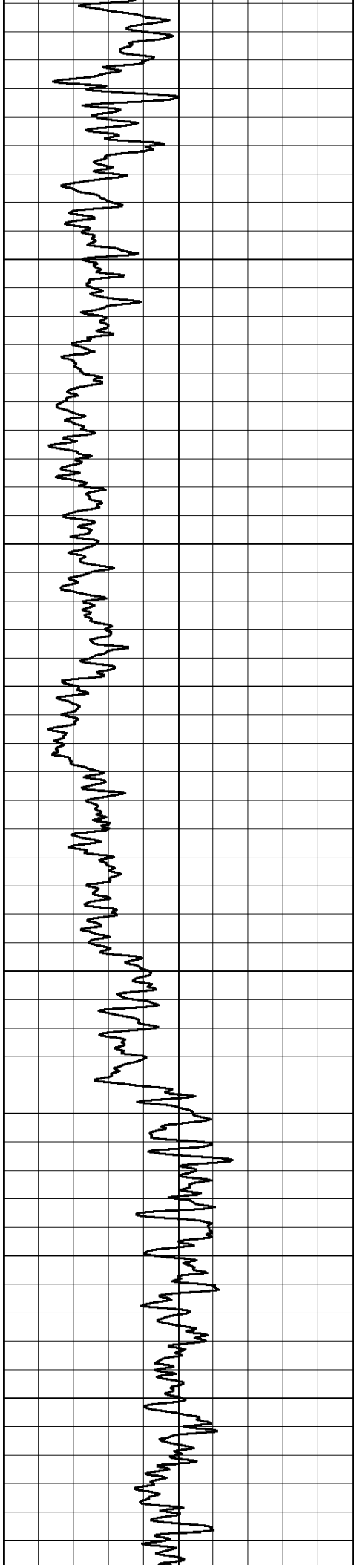
Database File: tomlinson\_040913hd.db  
 Dataset Pathname: rag/tomrag  
 Presentation Format: rag2in  
 Dataset Creation: Tue Apr 09 14:35:33 2013  
 Charted by: Depth in Feet scaled 1:600

0 Gamma Ray (GAPI) 150

0.2 Igrd (Ohm-m)

2000





850

900

950

1000

1050

1100

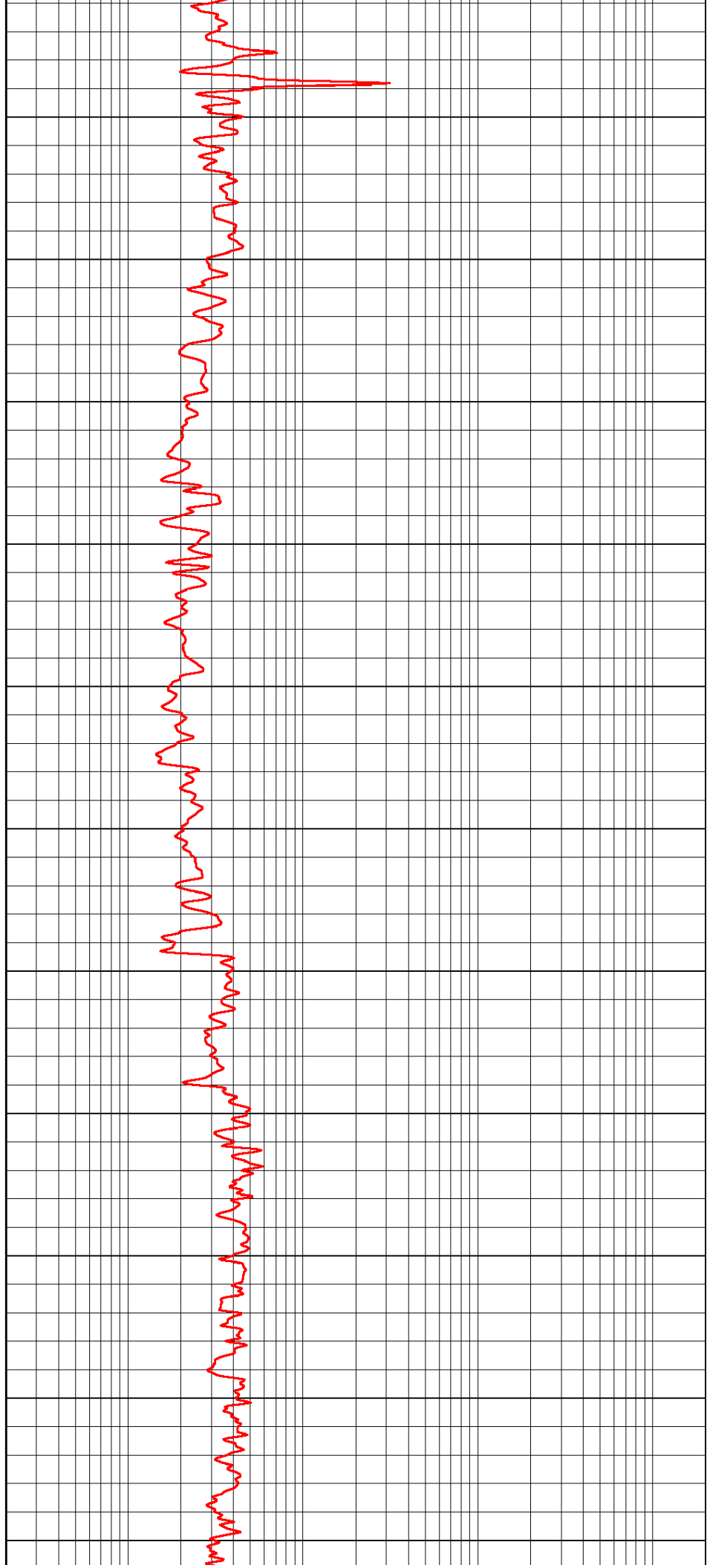
1150

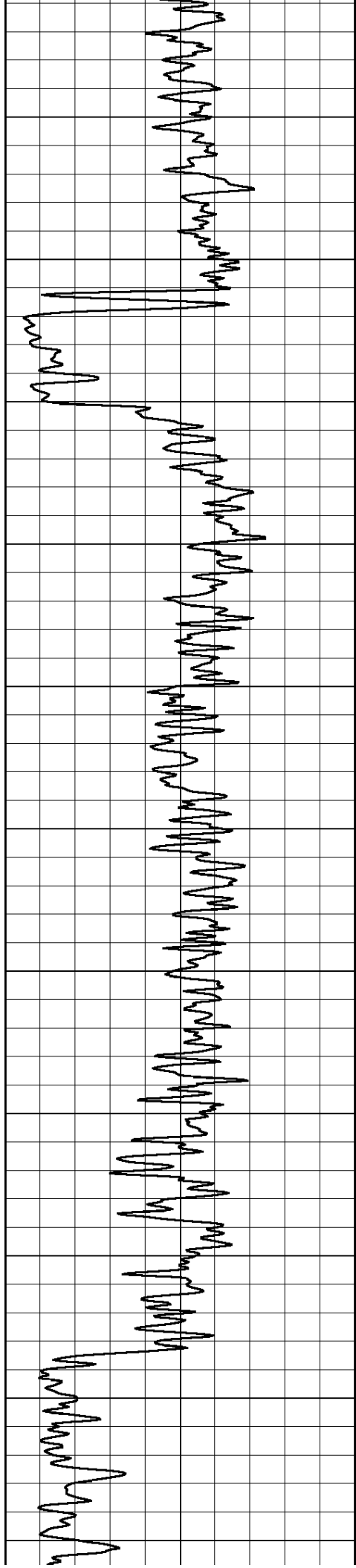
1200

1250

1300

1350





1400

1450

1500

1550

1600

1650

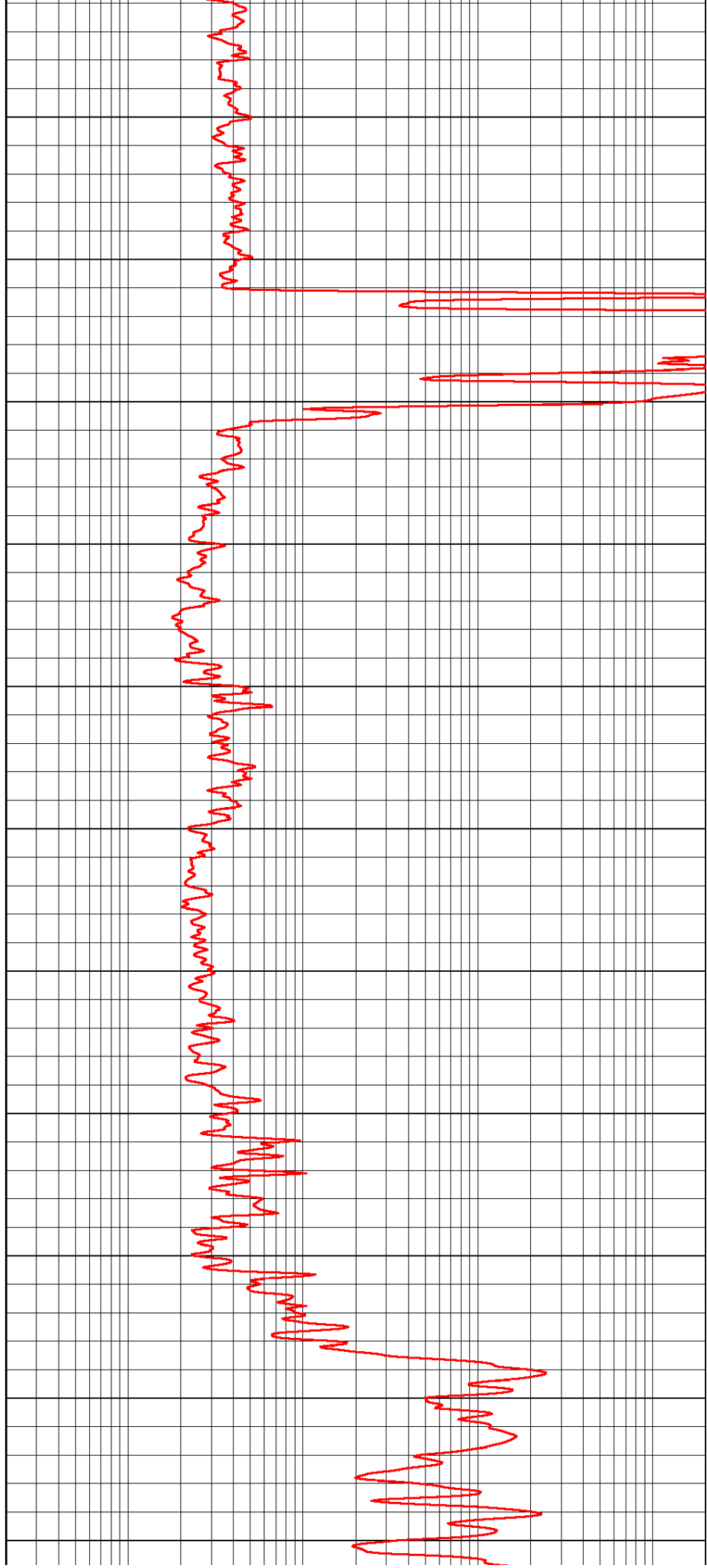
1700

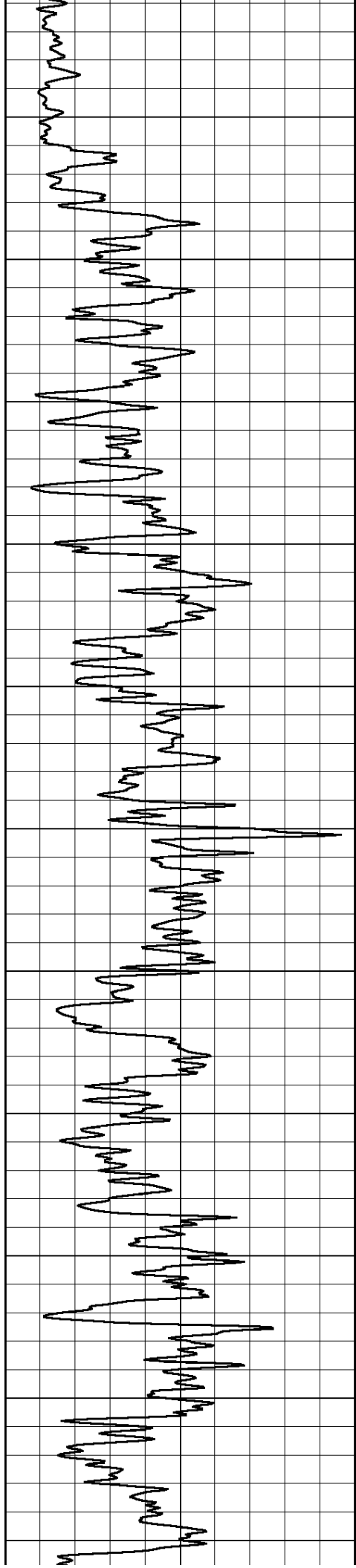
1750

1800

1850

1900





1950

2000

2050

2100

2150

2200

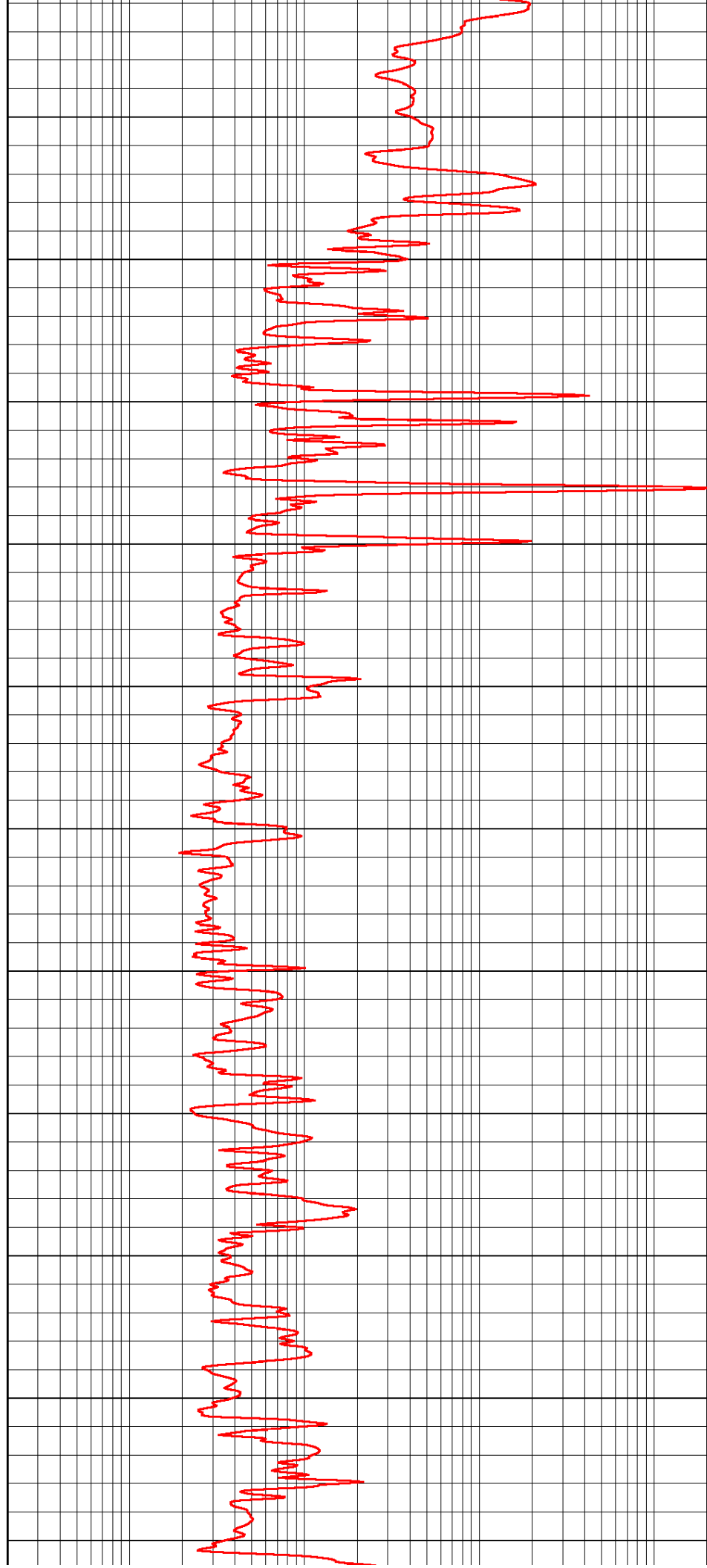
2250

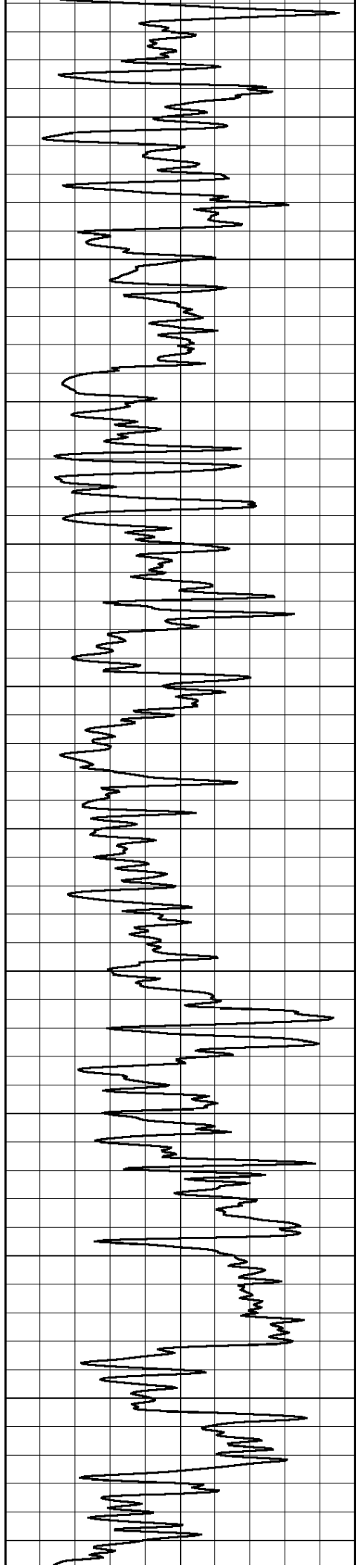
2300

2350

2400

2450





2500

2550

2600

2650

2700

2750

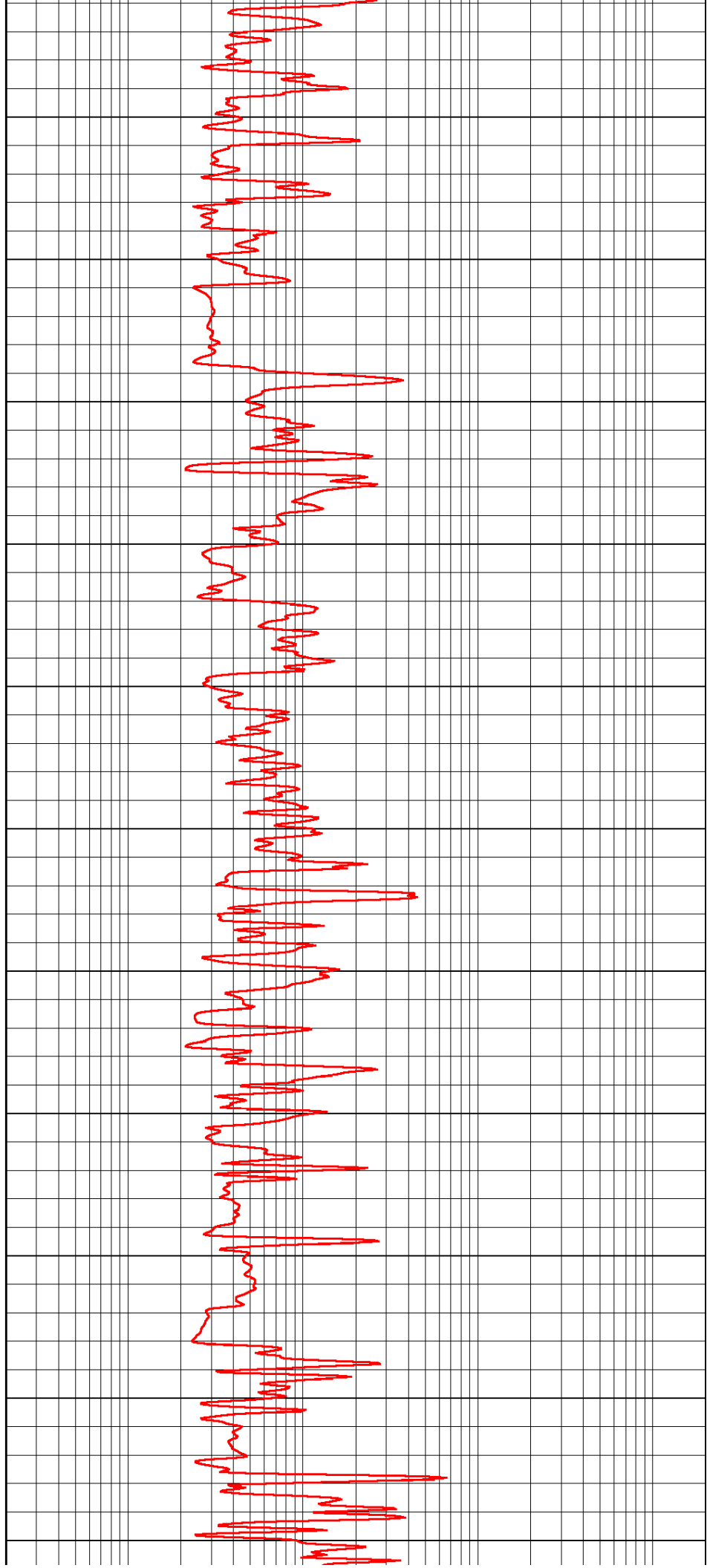
2800

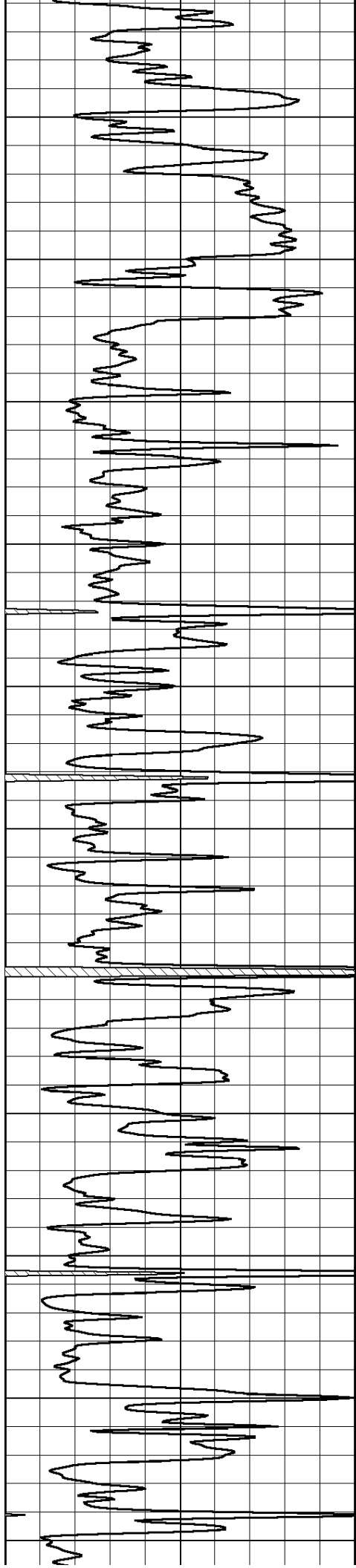
2850

2900

2950

3000





3050

3100

3150

3200

3250

3300

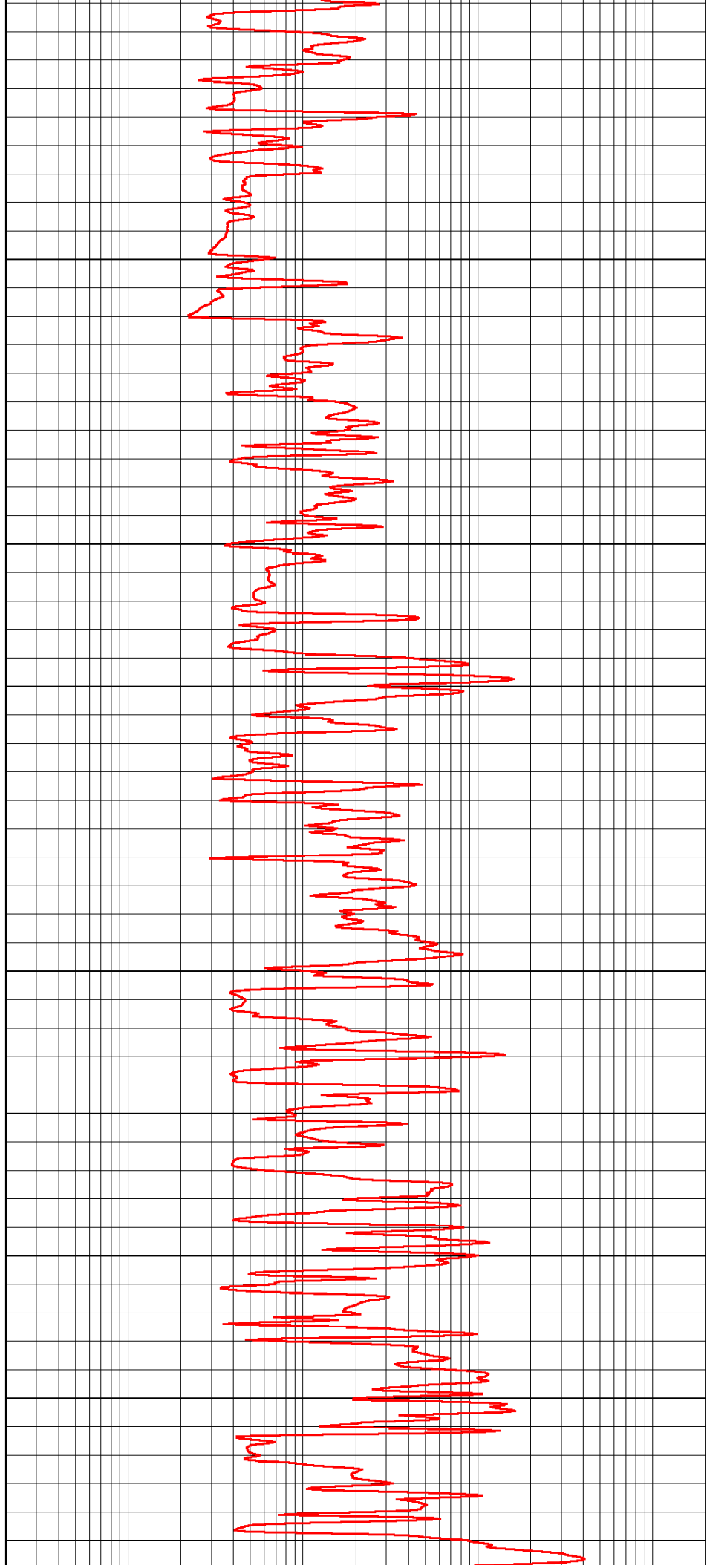
3350

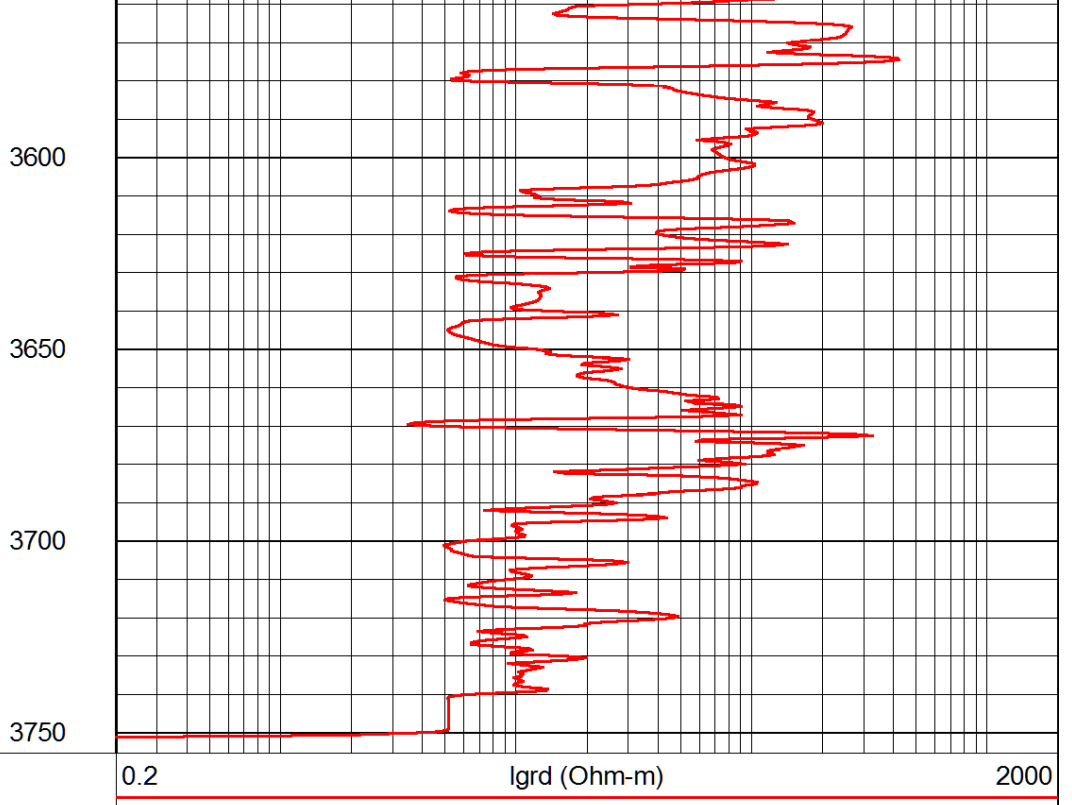
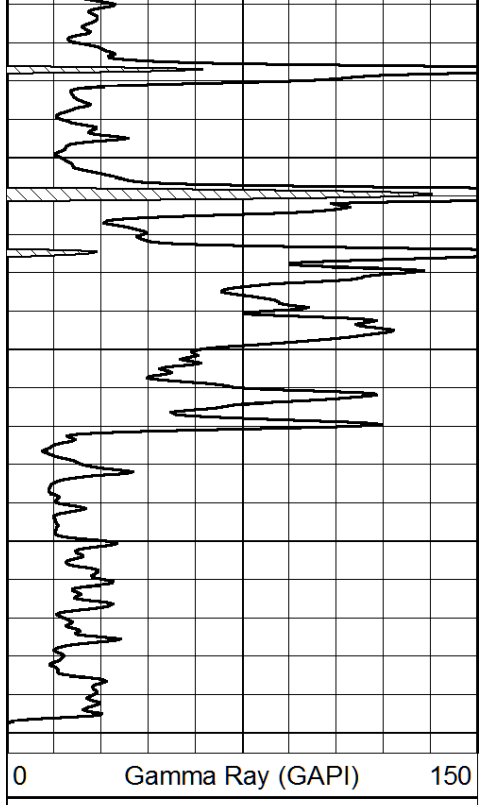
3400

3450

3500

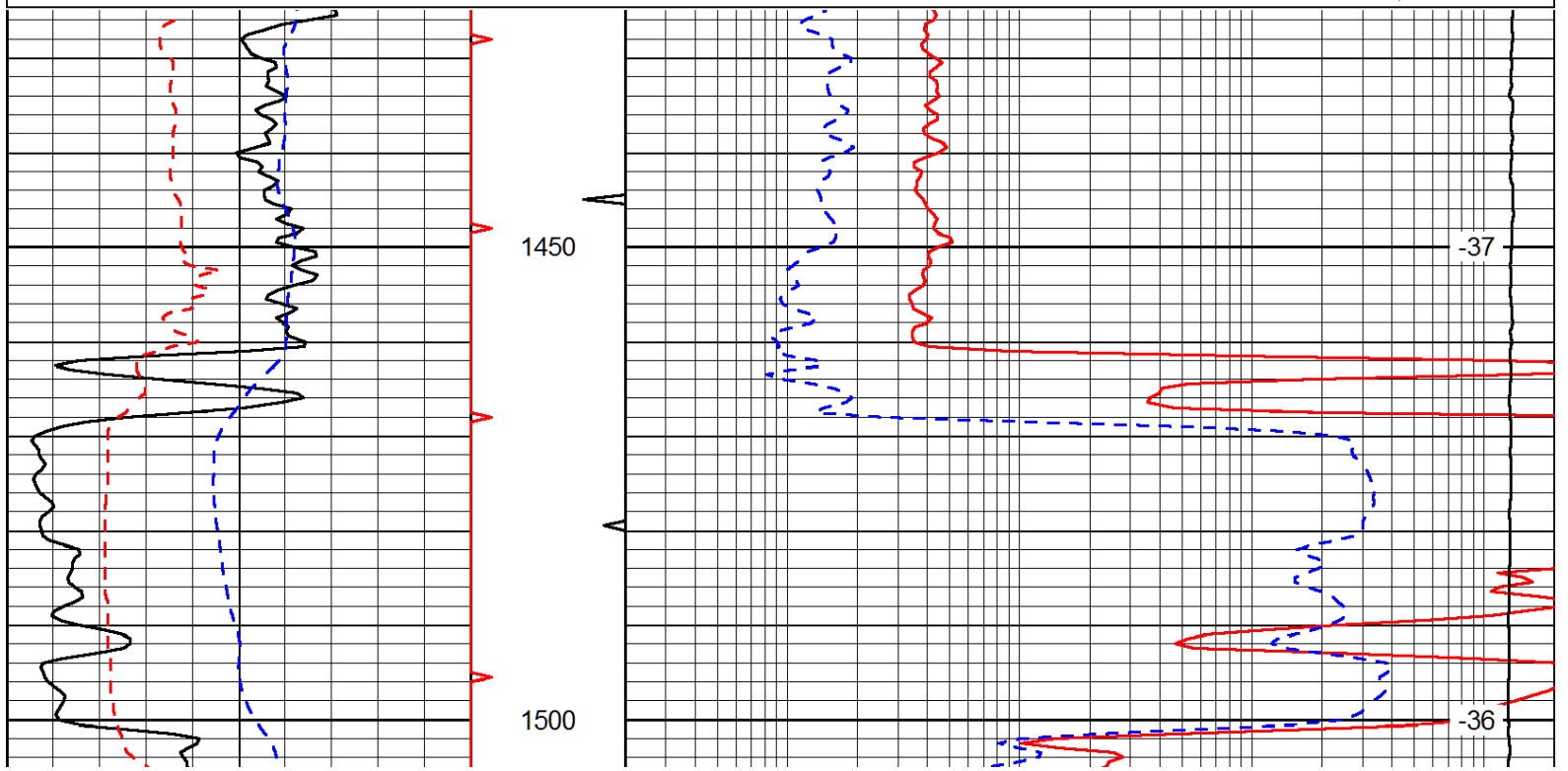
3550



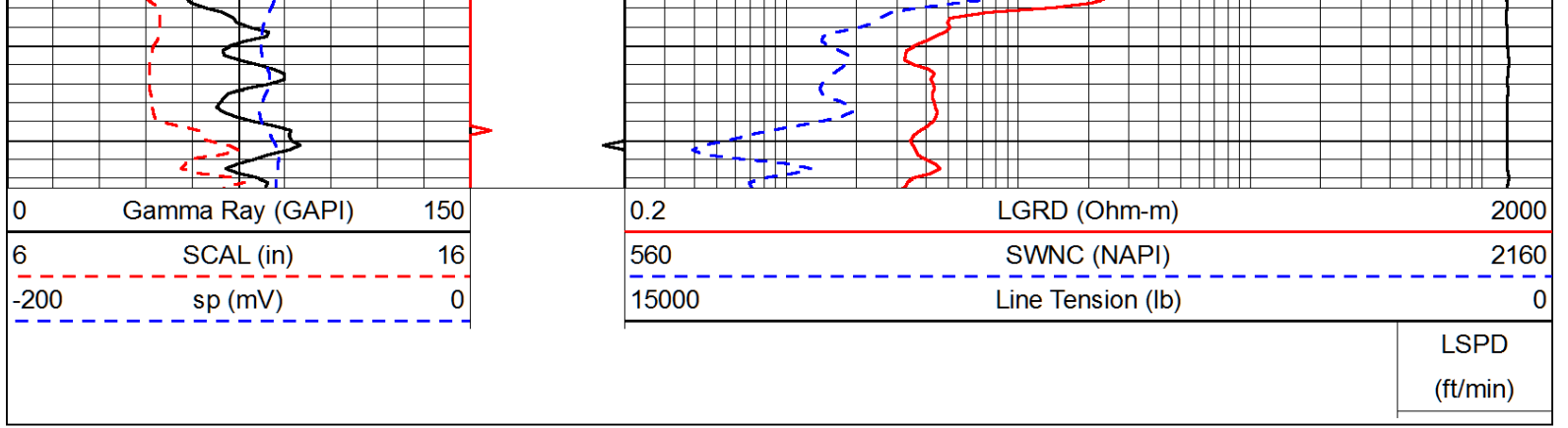


Database File: tomlinson\_040913hd.db  
 Dataset Pathname: rag/tomrag  
 Presentation Format: rag  
 Dataset Creation: Tue Apr 09 14:35:33 2013  
 Charted by: Depth in Feet scaled 1:240

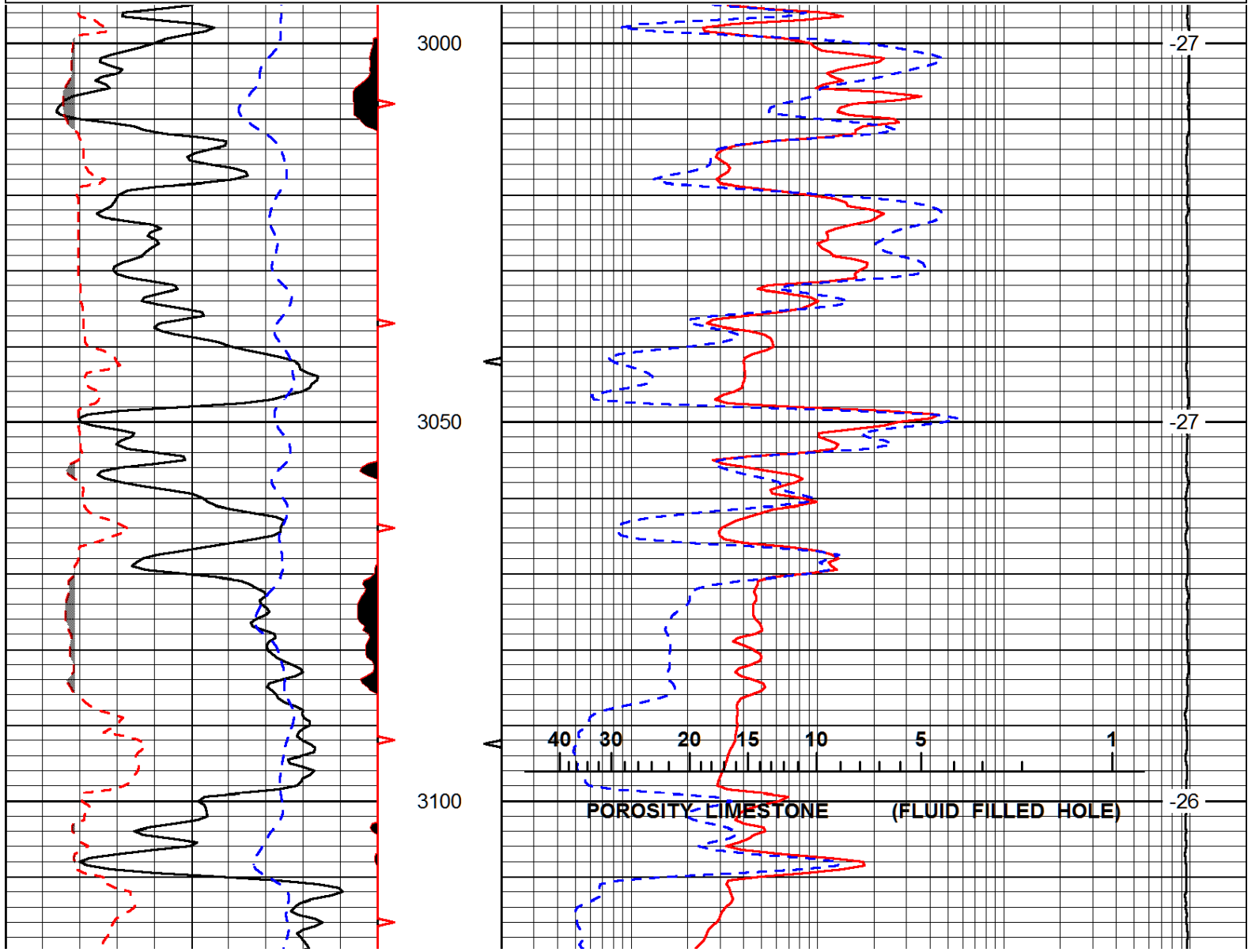
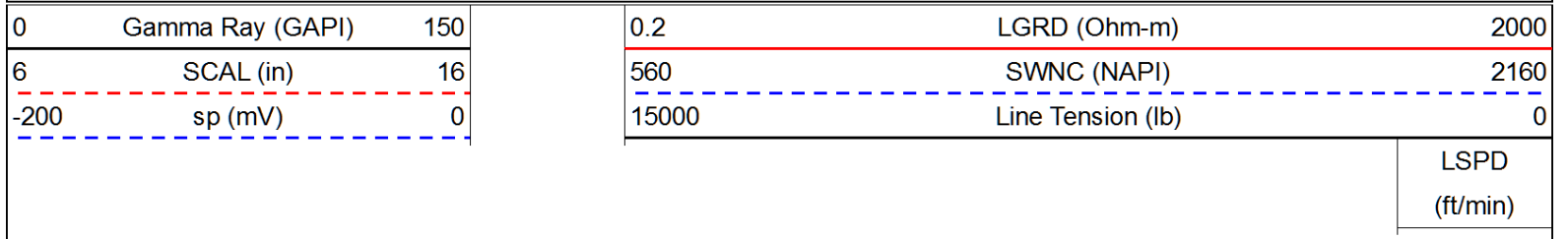
0	Gamma Ray (GAPI)	150	0.2	LGRD (Ohm-m)	2000
6	SCAL (in)	16	560	SWNC (NAPI)	2160
-200	sp (mV)	0	15000	Line Tension (lb)	0
					LSPD (ft/min)

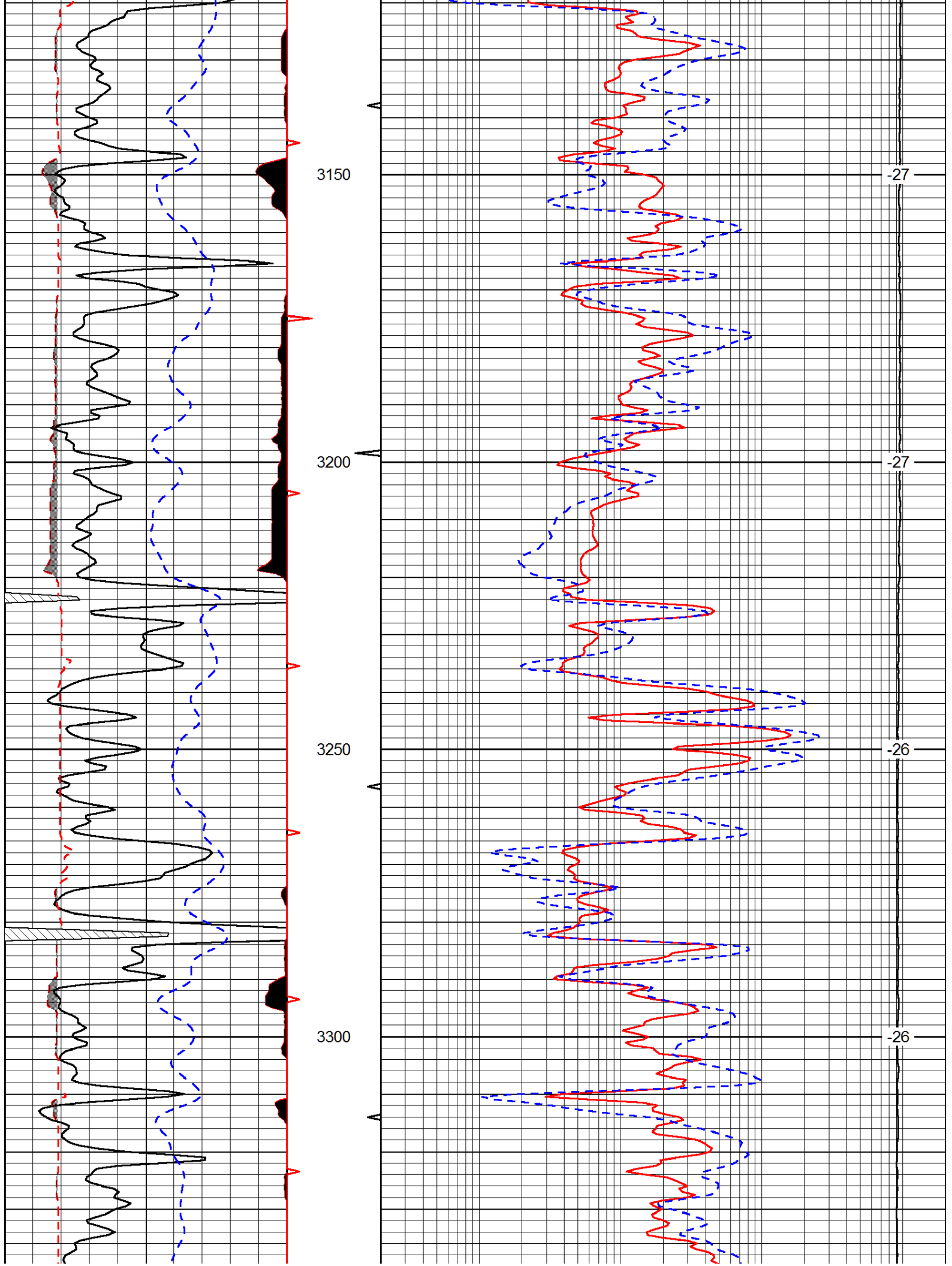


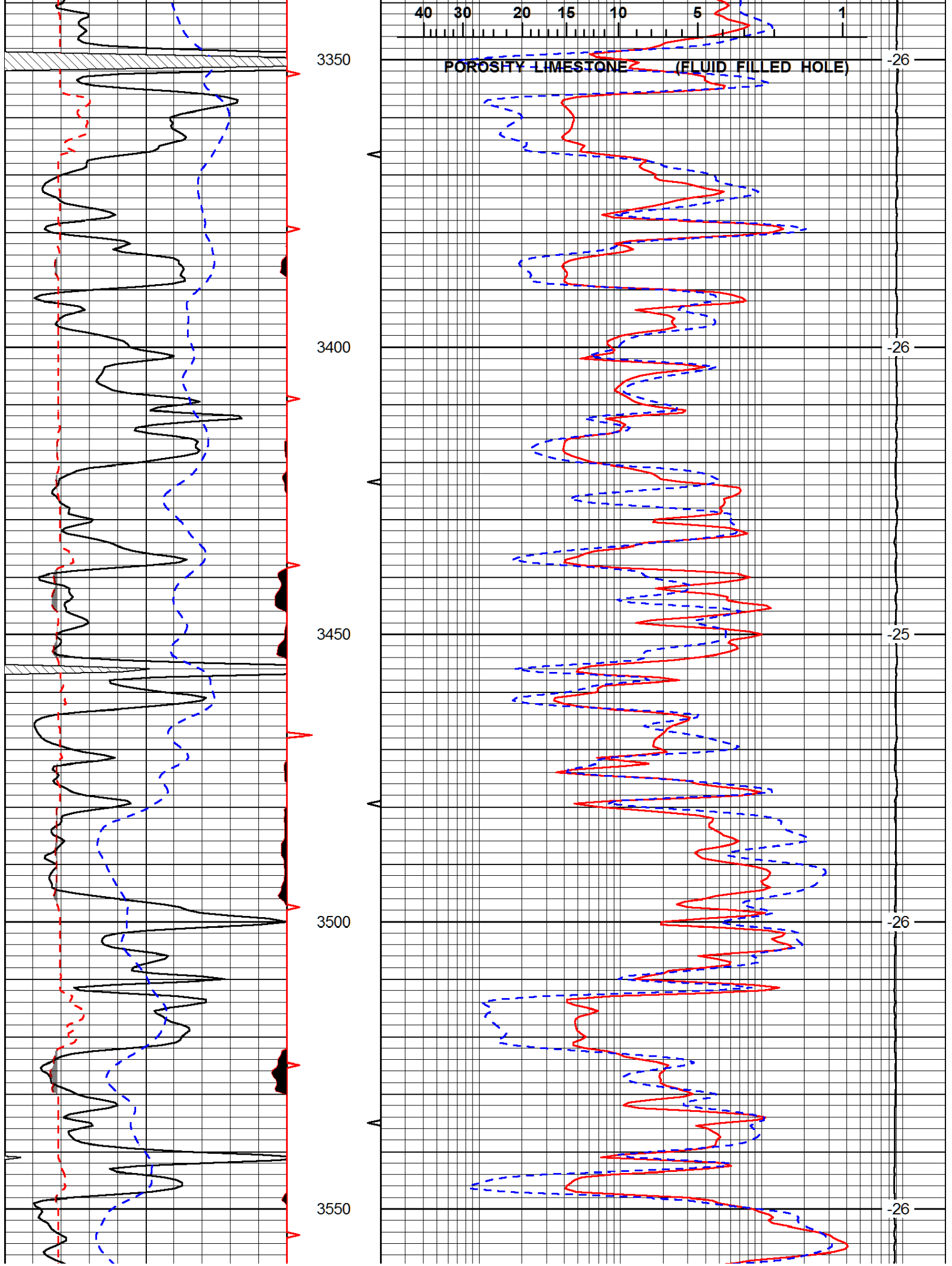


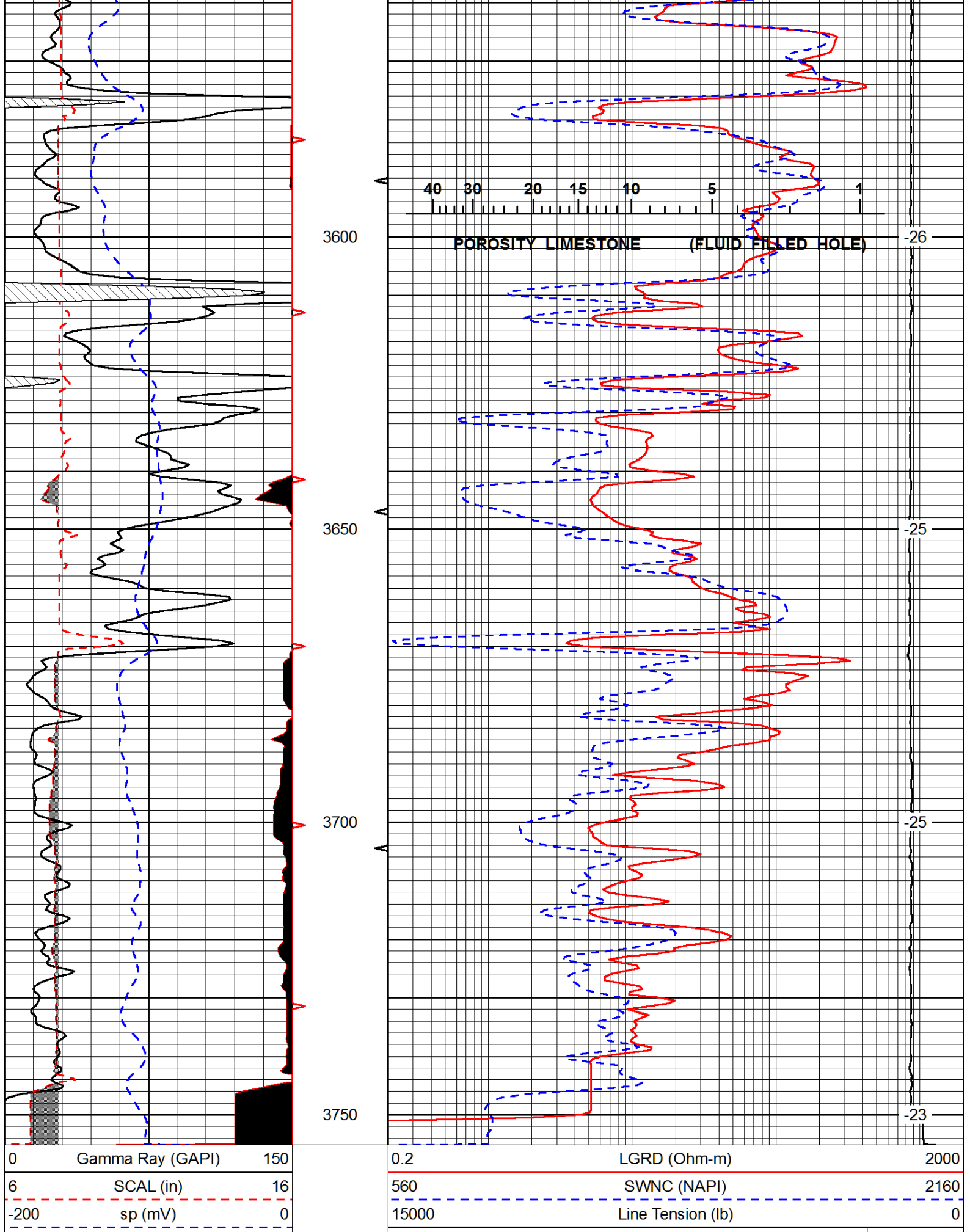


Database File: tomlinson\_040913hd.db  
 Dataset Pathname: rag/tomrag  
 Presentation Format: rag  
 Dataset Creation: Tue Apr 09 14:35:33 2013  
 Charted by: Depth in Feet scaled 1:240









0	Gamma Ray (GAPI)	150
6	SCAL (in)	16
-200	sp (mV)	0

0.2	LGRD (Ohm-m)	2000
560	SWNC (NAPI)	2160
15000	Line Tension (lb)	0

LSPD (ft/min)

