



Pioneer Energy Services

# Borehole Compensated Sonic Log

API No. 15-051-26478-00-00

Company Tomlinson Operating, LLC  
 Well Cleaveland #1  
 Field Leinmiller  
 County Ellis  
 State Kansas

Location 1650' FSL & 2310' FWL  
 Other Services RAG/MEL

Sec: 2 Twp: 12 S Rge: 19 W  
 Elevation 2112

Permanent Datum Ground Level Kelly Bushing 12 Ft. Above Perm. Datum  
 Log Measured From Kelly Bushing  
 Drilling Measured From Kelly Bushing

K.B. 2124  
 D.F. G.L. 2112

Date	04-09-2013	
Run Number	Two	
Type Log	BHC Sonic	
Depth Driller	3750	
Depth Logger	3749	
Bottom Logged Interval	3738	
Top Logged Interval	300	
Type Fluid In Hole	Chemical	
Salinity, PPM CL	4000	
Density	9.2	
Level	Full	
Max. Rec. Temp. F	116	
Operating Rig Time	4 Hours	
Equipment -- Location	91 Hays	
Recorded By	Y. Ruiz	
Witnessed By	Bob O'Dell	

Borehole Record			Casing Record				
Run No.	Bit	From	To	Size	Wgt.	From	To
One	12.25	00	303	8.625	23#	00	303
Two	7.875	303	TD				

<<< Fold Here >>>

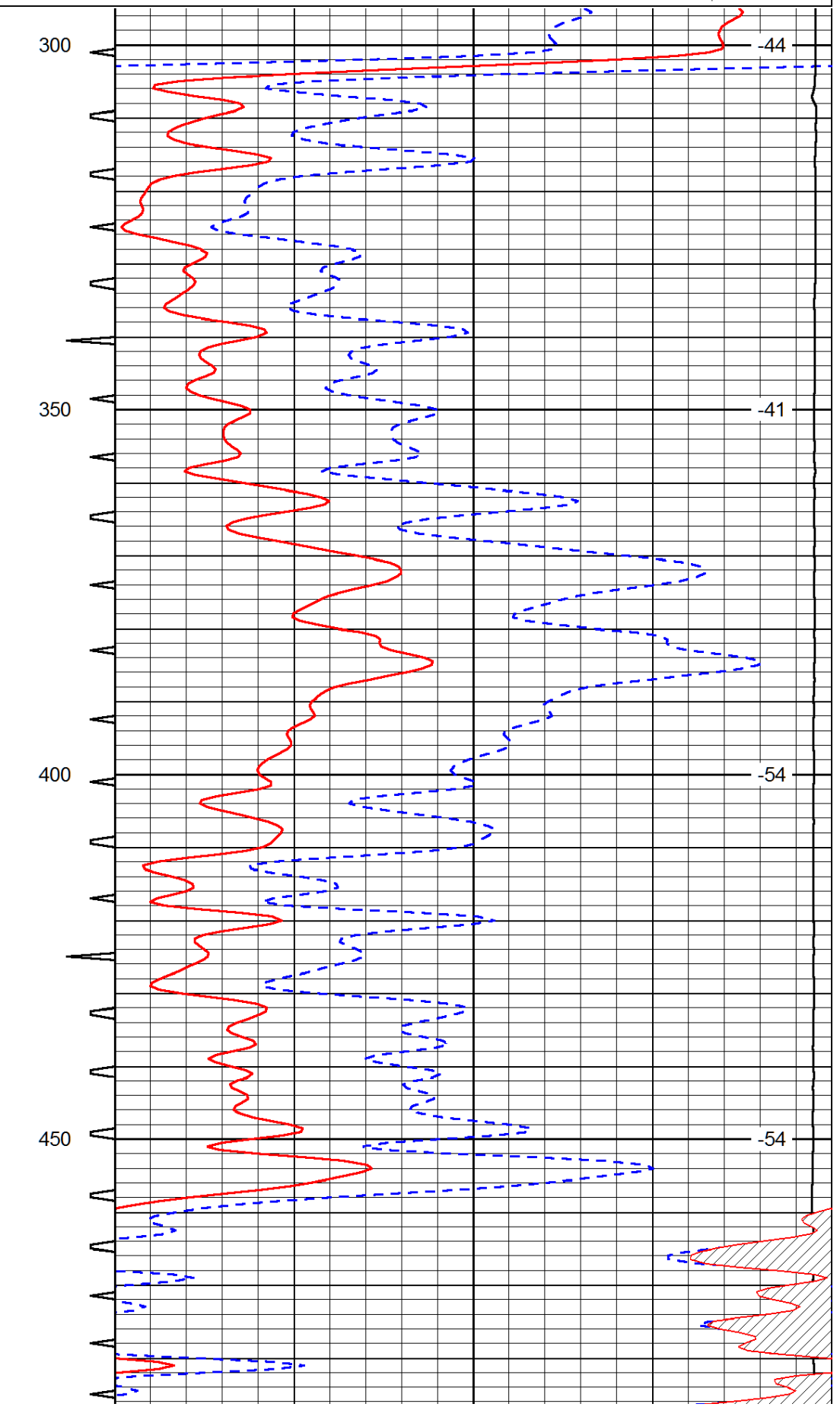
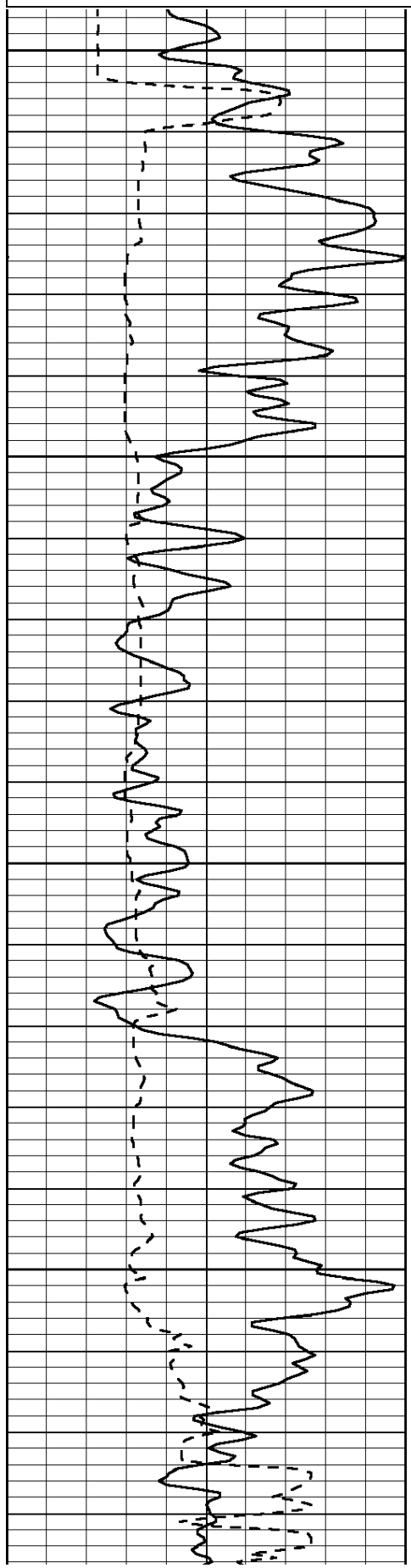
All interpretations are opinions based on inferences from electrical or other measurements and we cannot and do not guarantee the accuracy or correctness of any interpretation, and we shall not, except in the case of gross or willful negligence on our part, be liable or responsible for any loss, costs, damages, or expenses incurred or sustained by anyone resulting from any interpretation made by any of our officers, agents or employees. These interpretations are also subject to our general terms and conditions set out in our current Price Schedule.

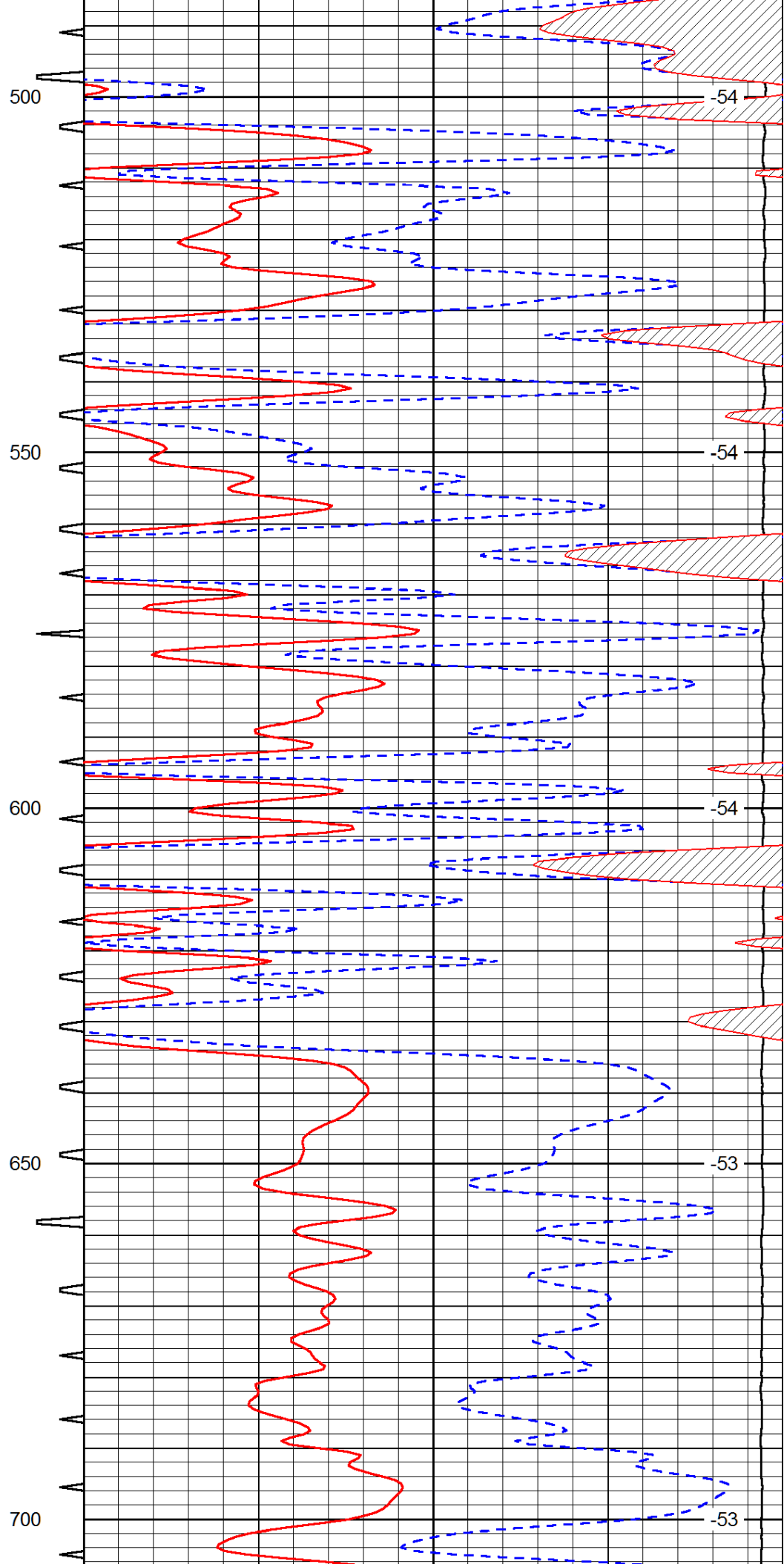
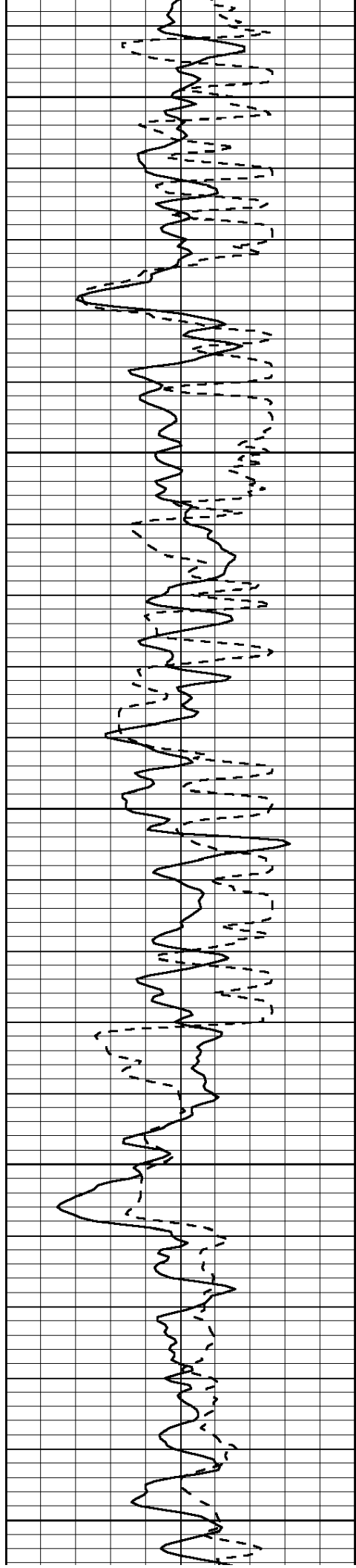
Comments

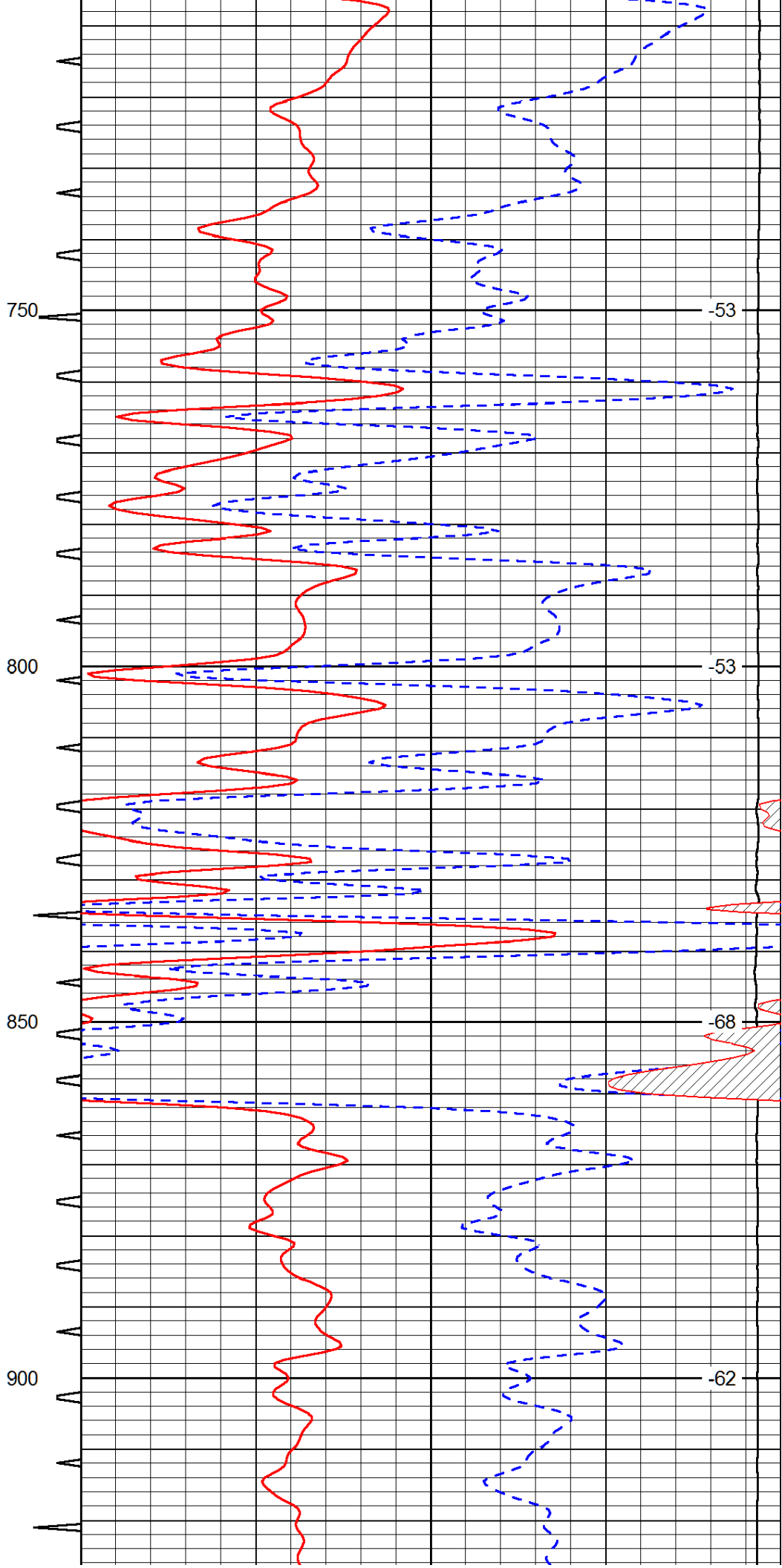
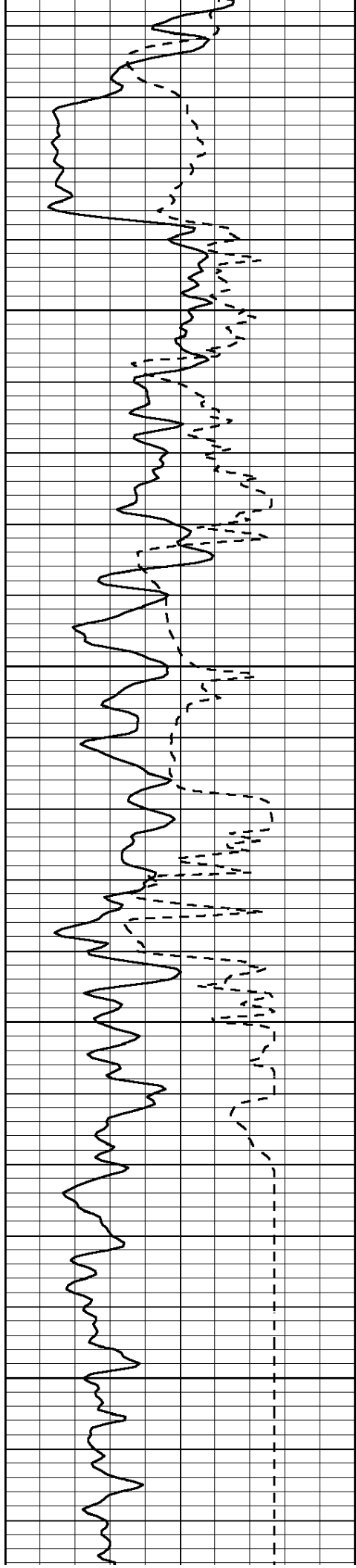
Thank you for using Log-Tech, Inc.  
 (785) 625-3858  
 Hays,  
 North to Buckeye, 4 West to Hyacinth Ave,  
 2 North, 1/2 West,  
 North into

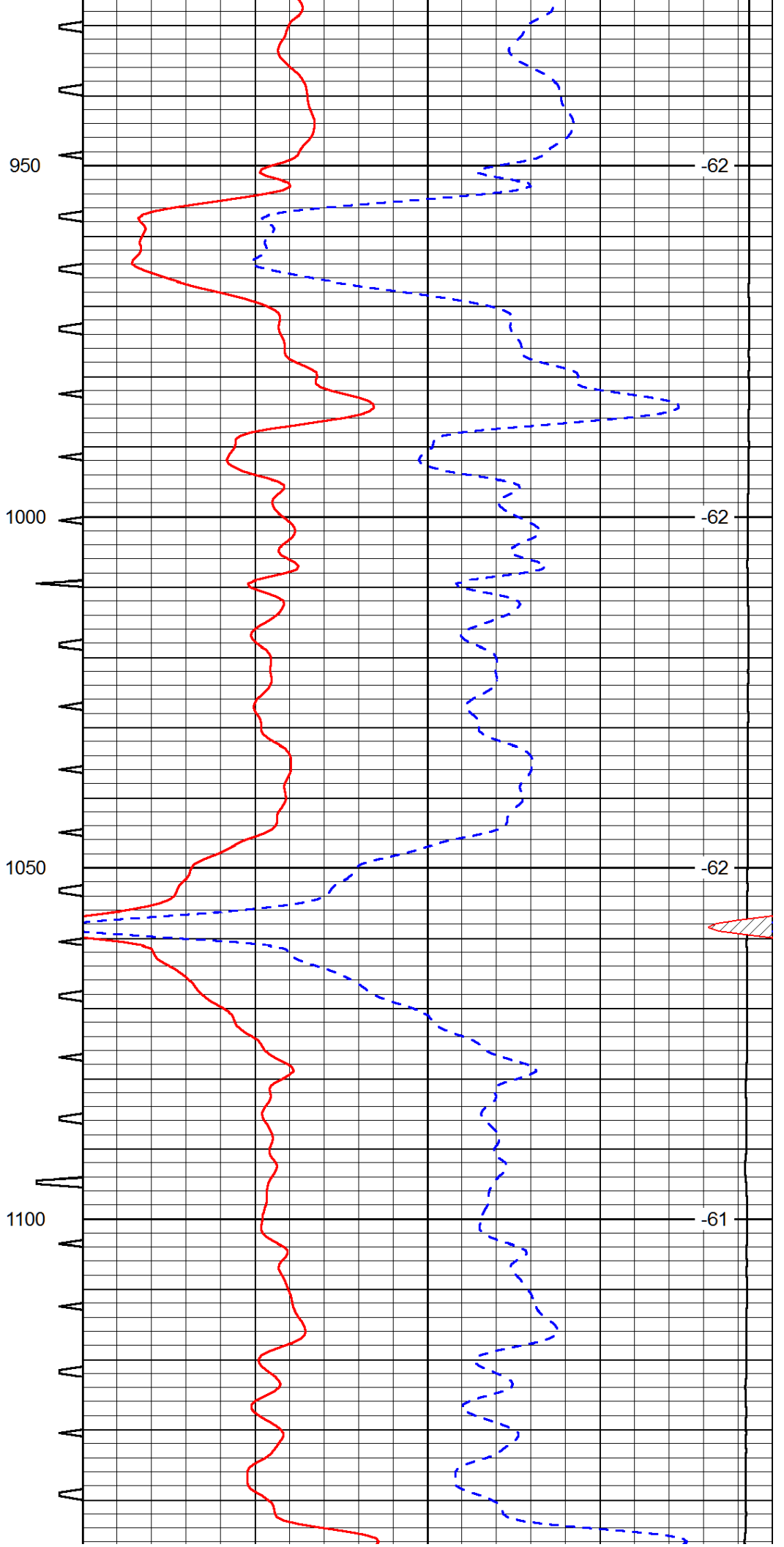
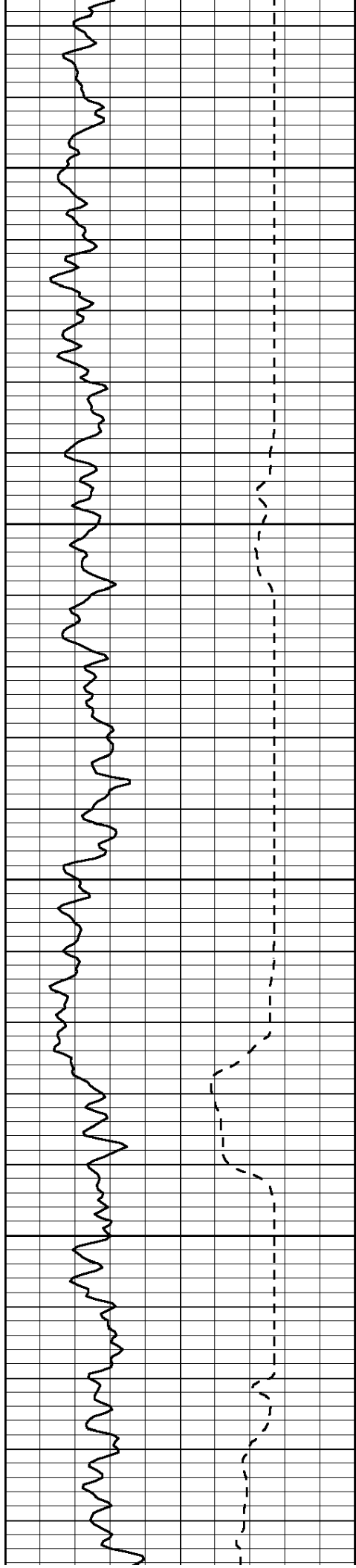
Database File: tomlinson\_040913hd.db  
 Dataset Pathname: rag/tomrag  
 Presentation Format: sonic  
 Dataset Creation: Tue Apr 09 14:35:33 2013  
 Charted by: Depth in Feet scaled 1:240

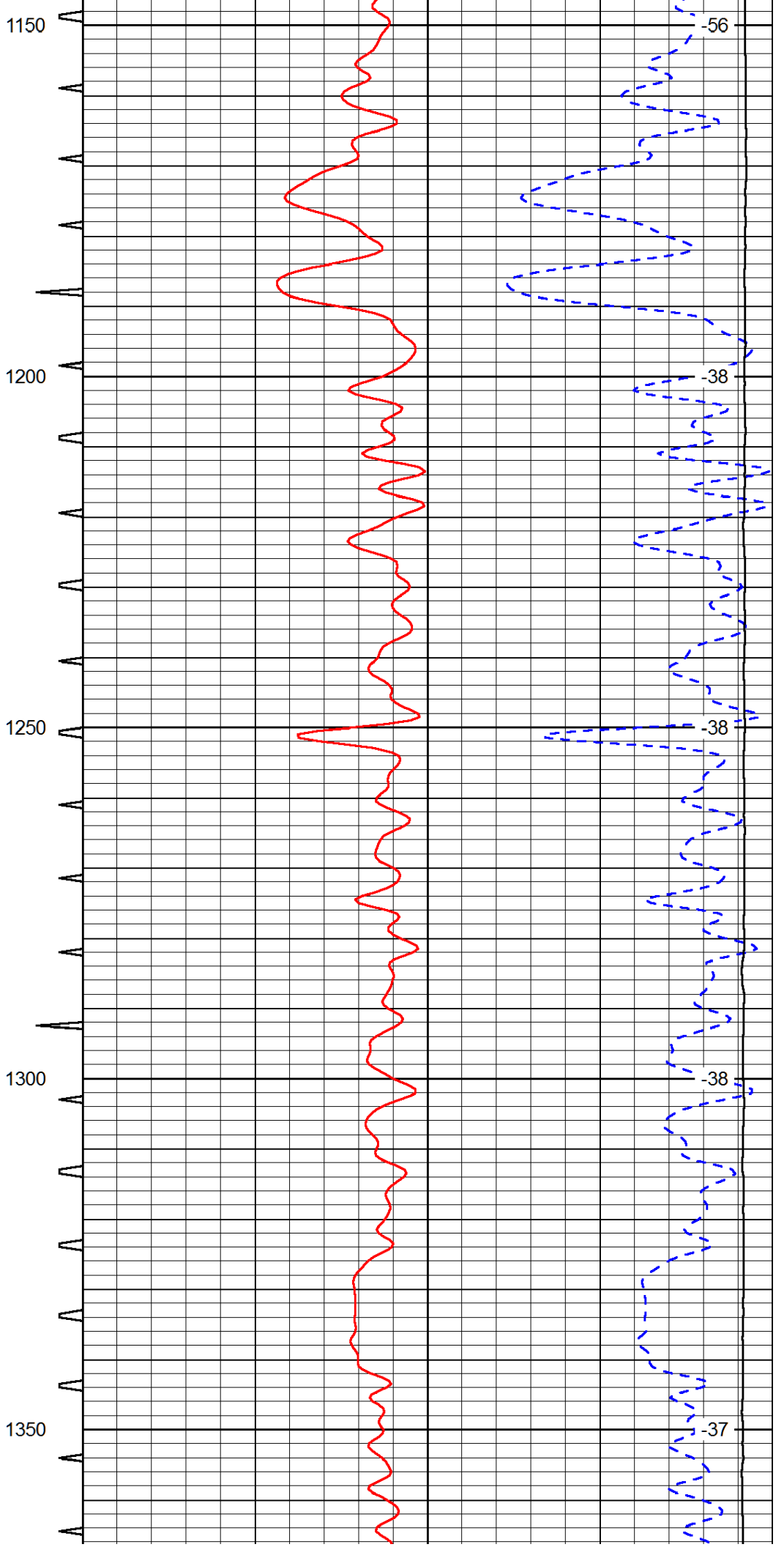
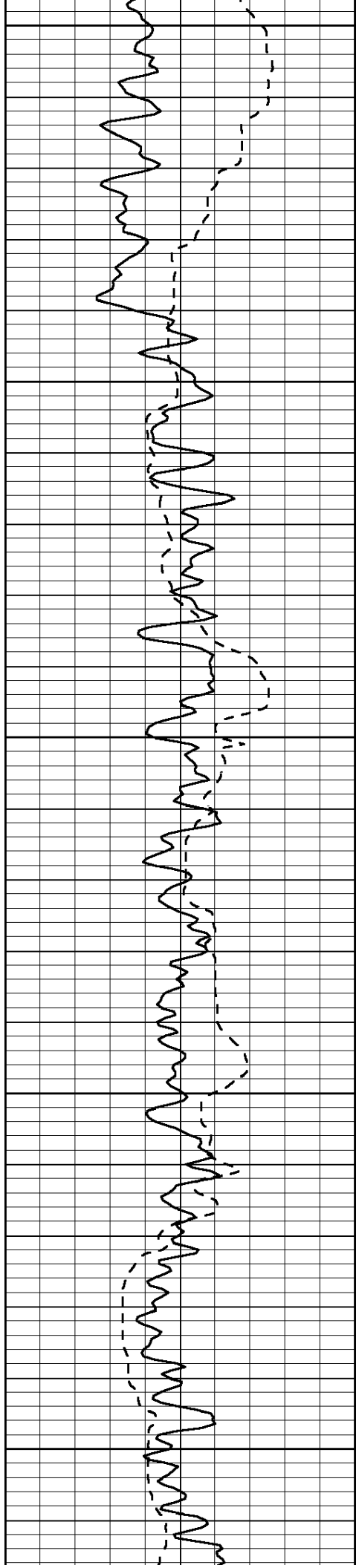
0	Gamma Ray (GAPI)	150	Sonic Int	140	Delta Time (usec/ft) (usec/ft)	40
150	Gamma Ray (GAPI)	300	5 (msec) 0	30	Sonic Porosity (pu)	-10
6	scal (in)	16		15000	LTEN (lb) (lb)	0
						LSPD (ft/min)

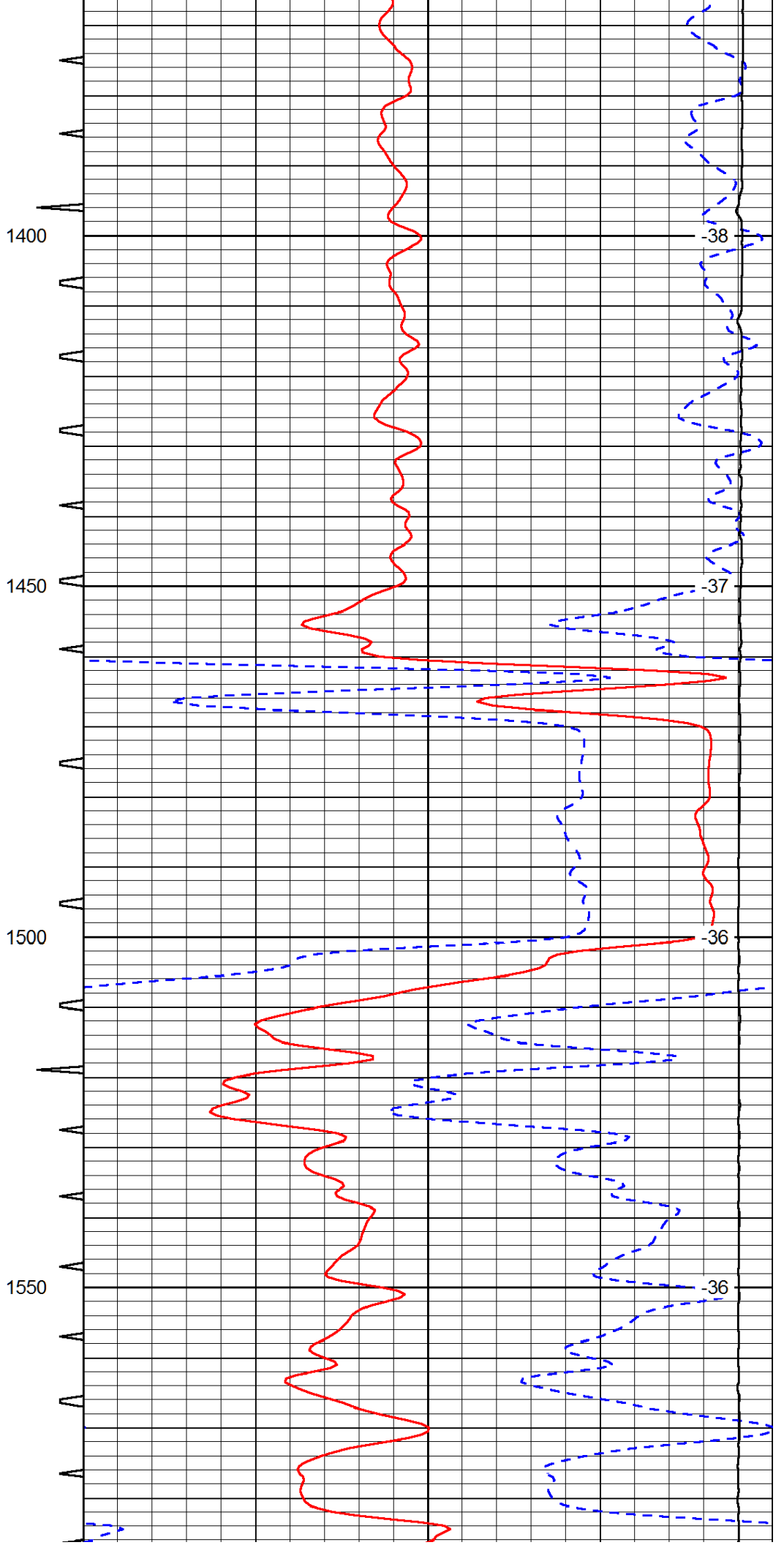
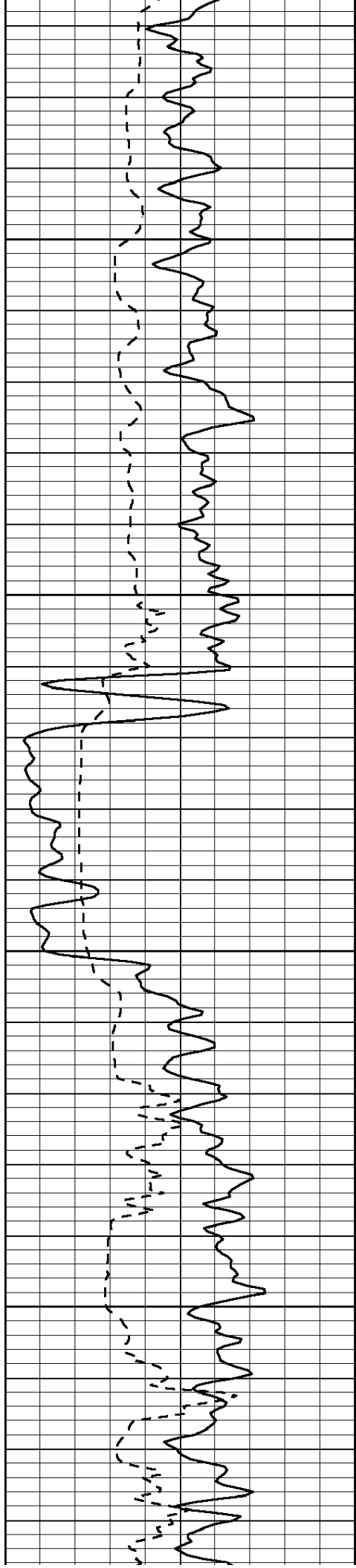


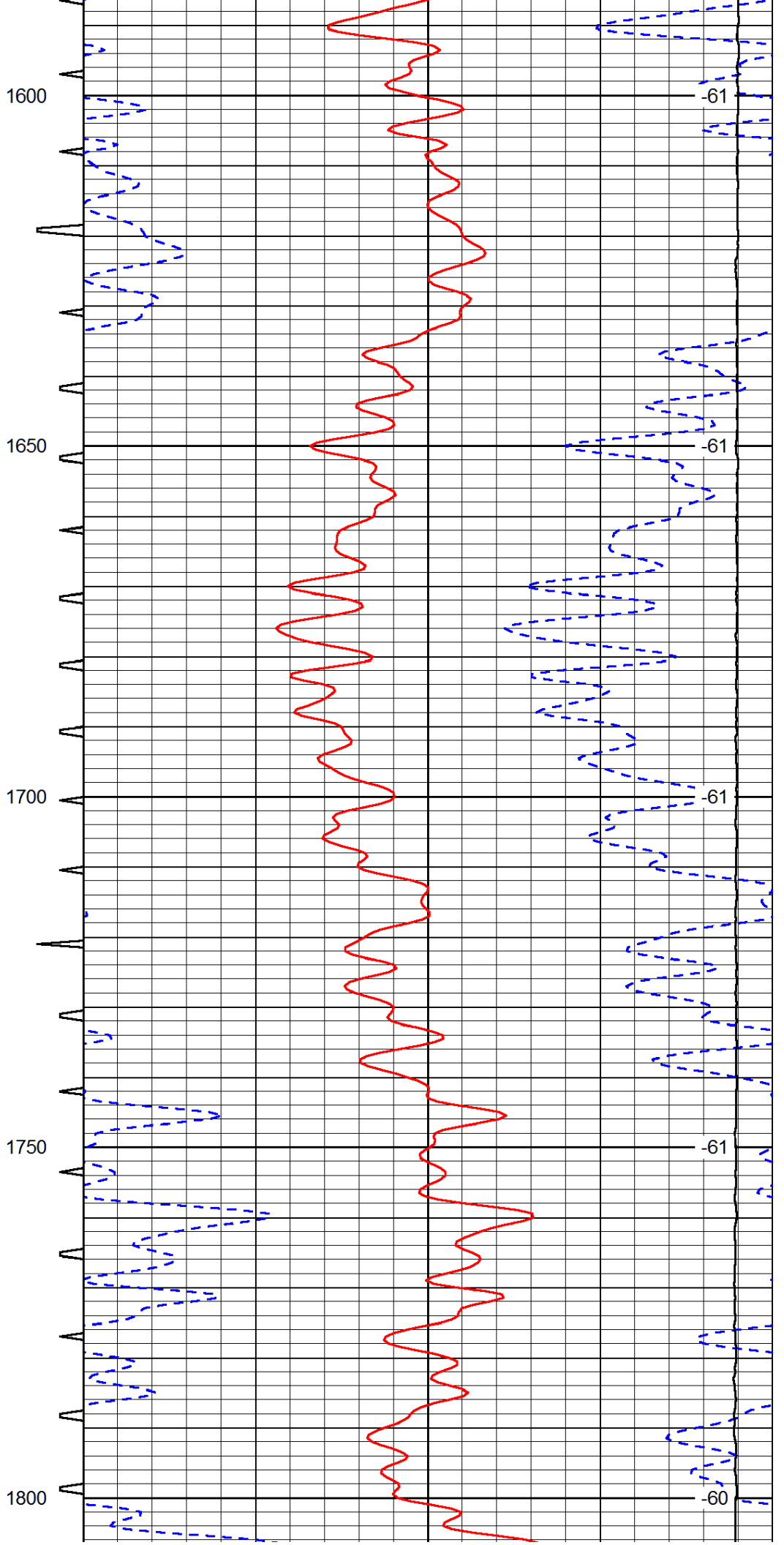
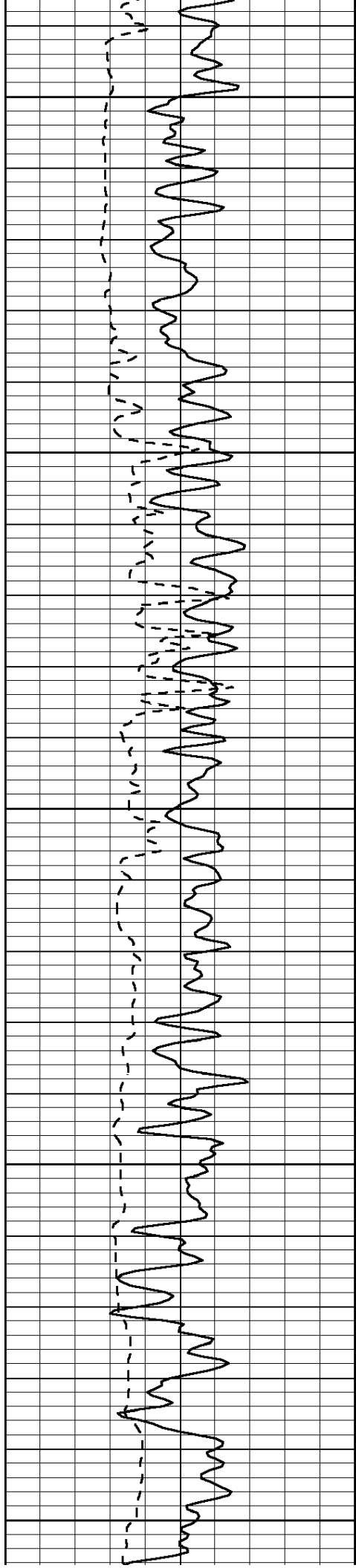




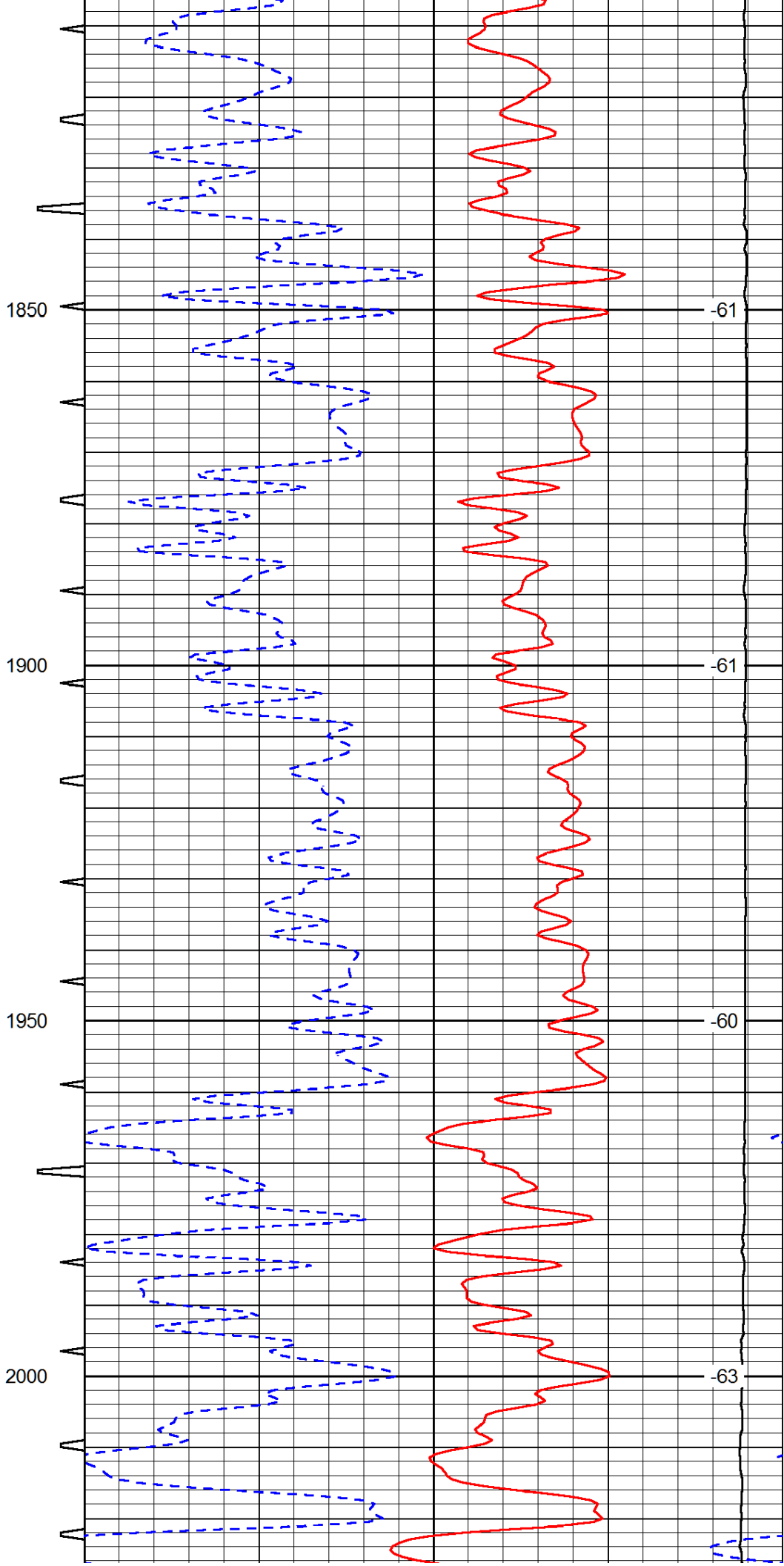
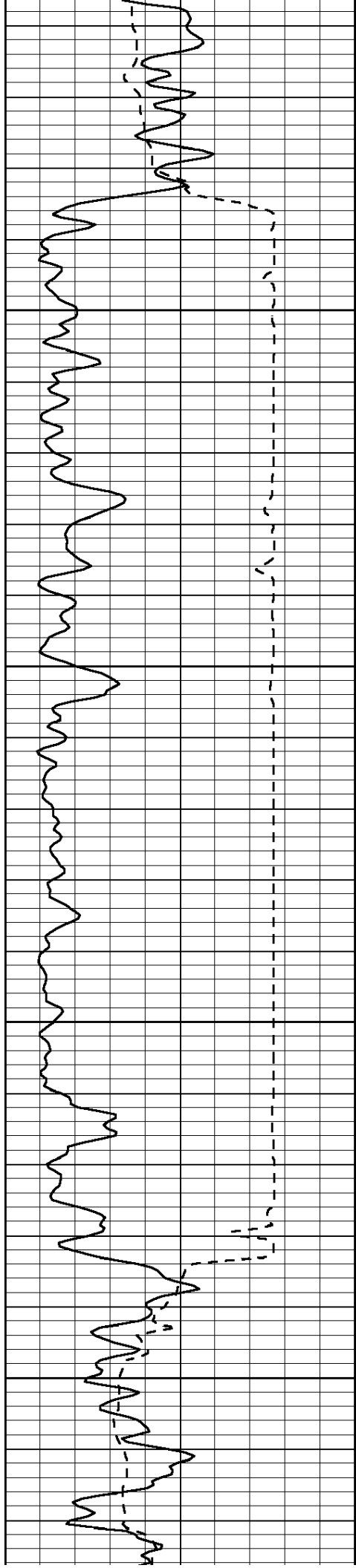


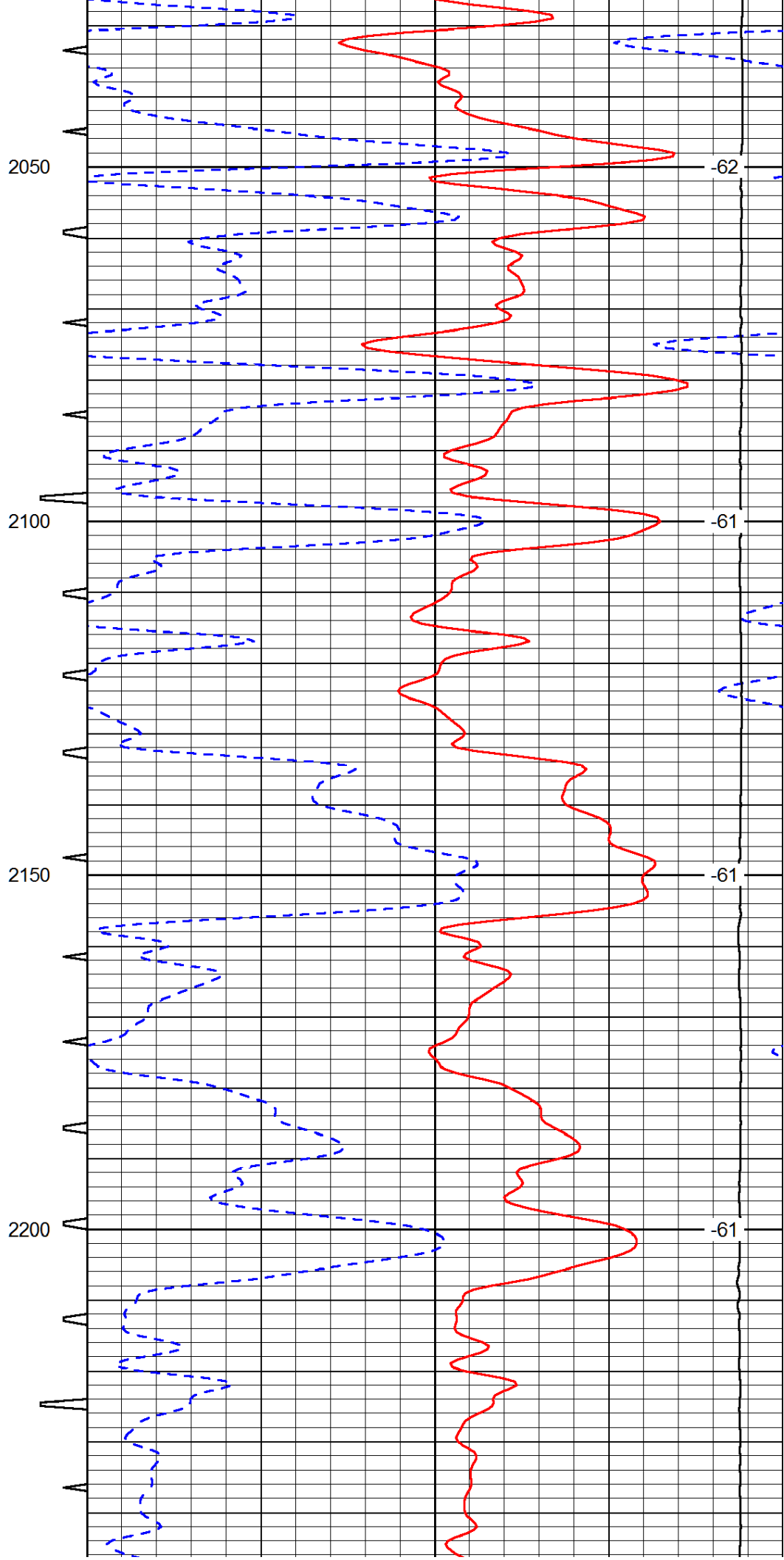
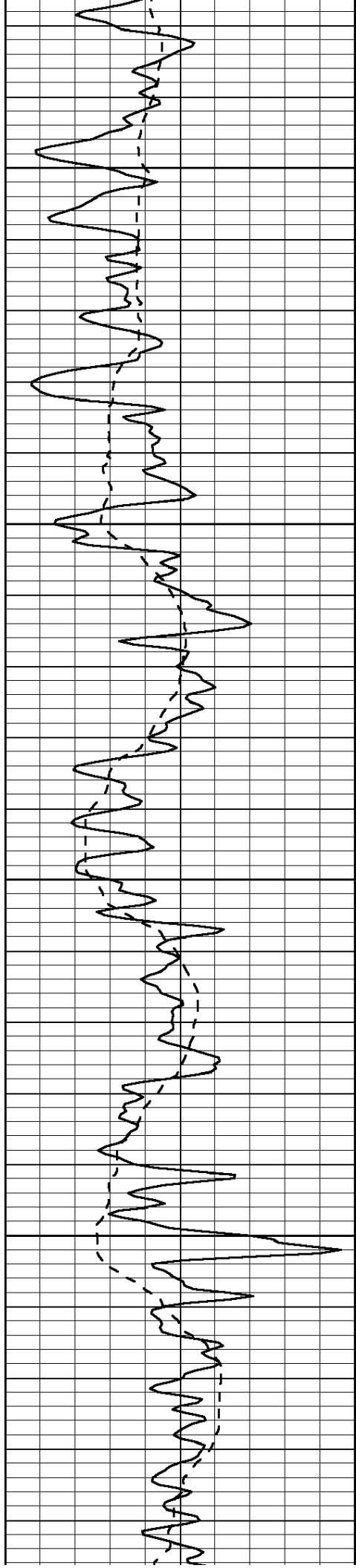


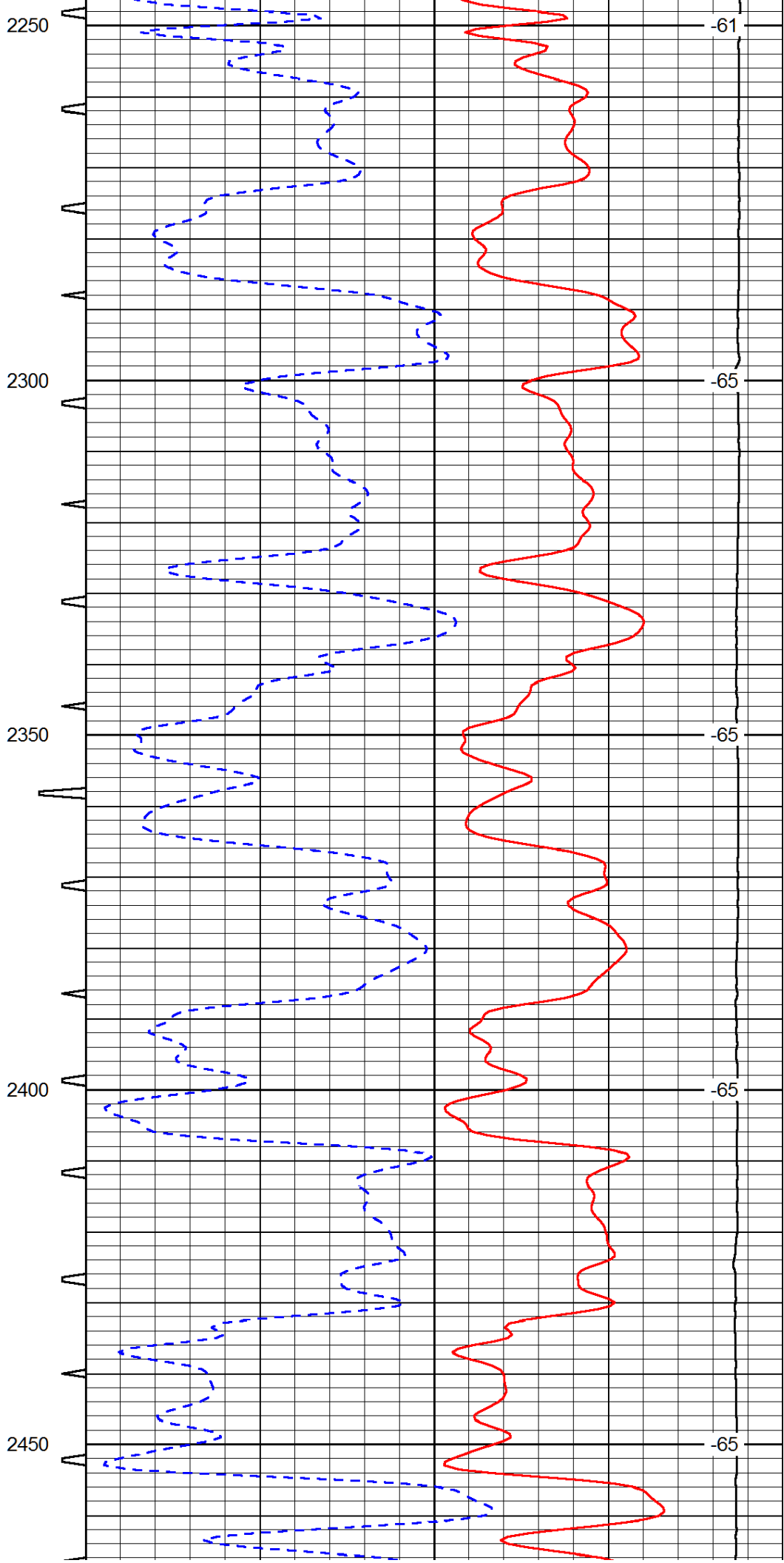
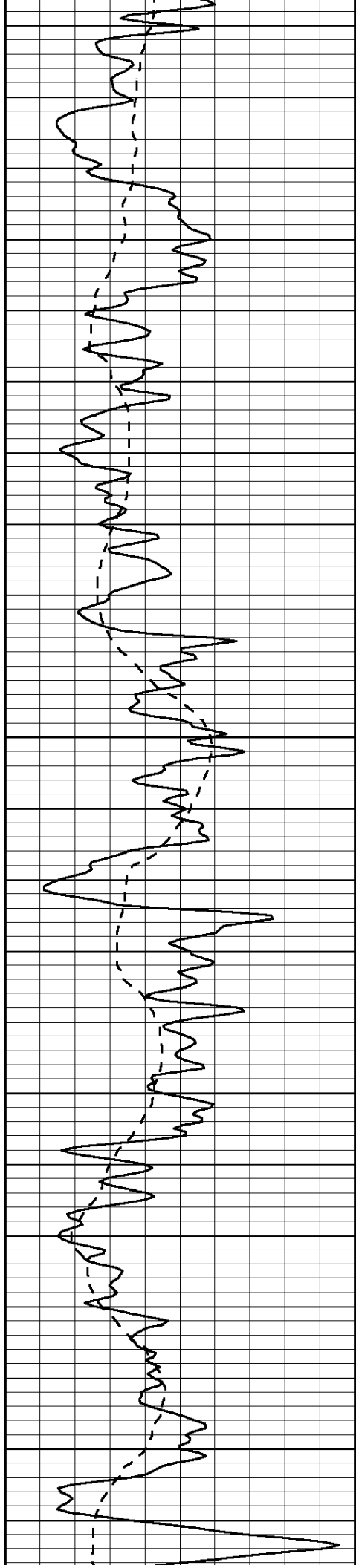


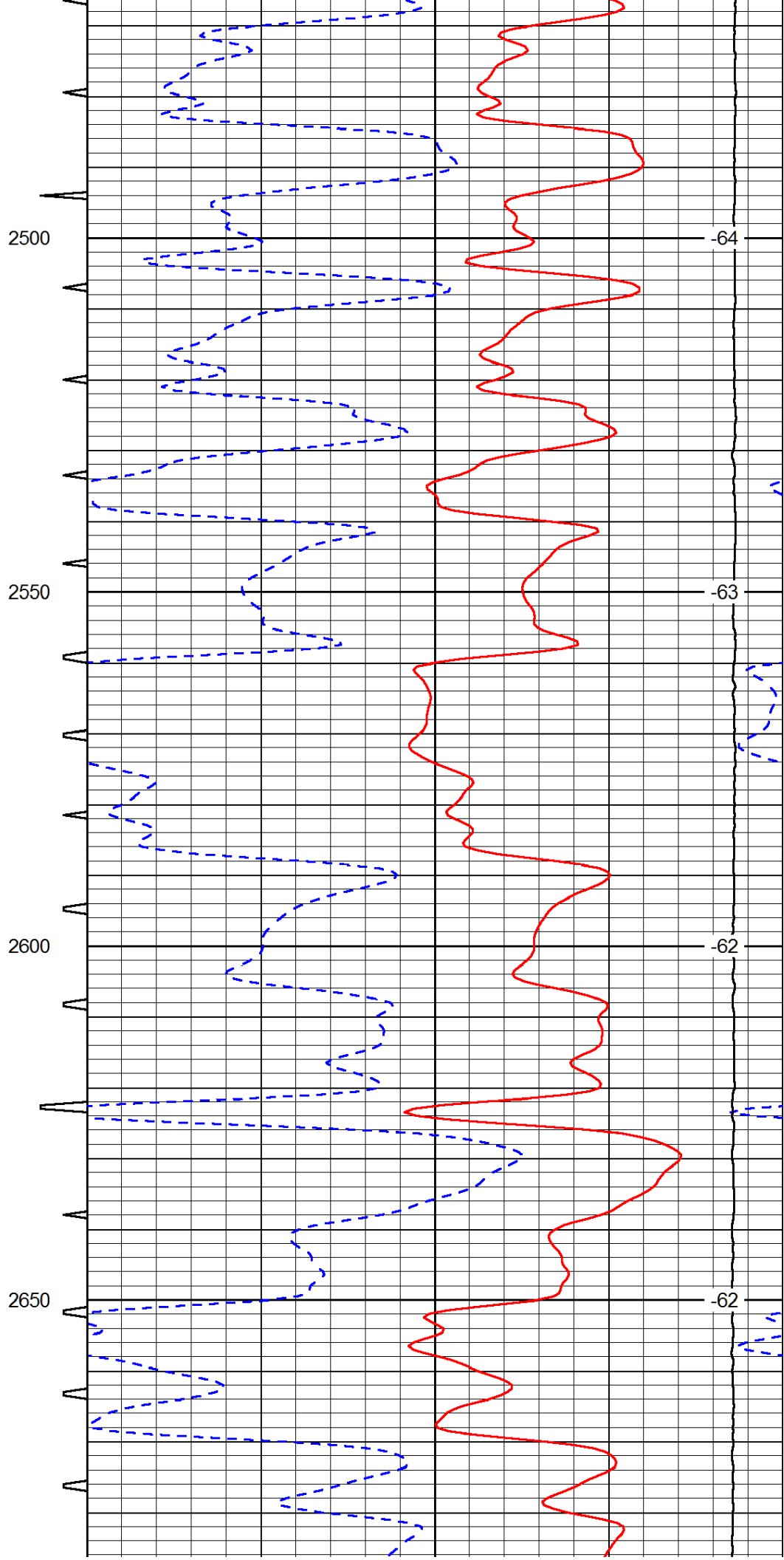
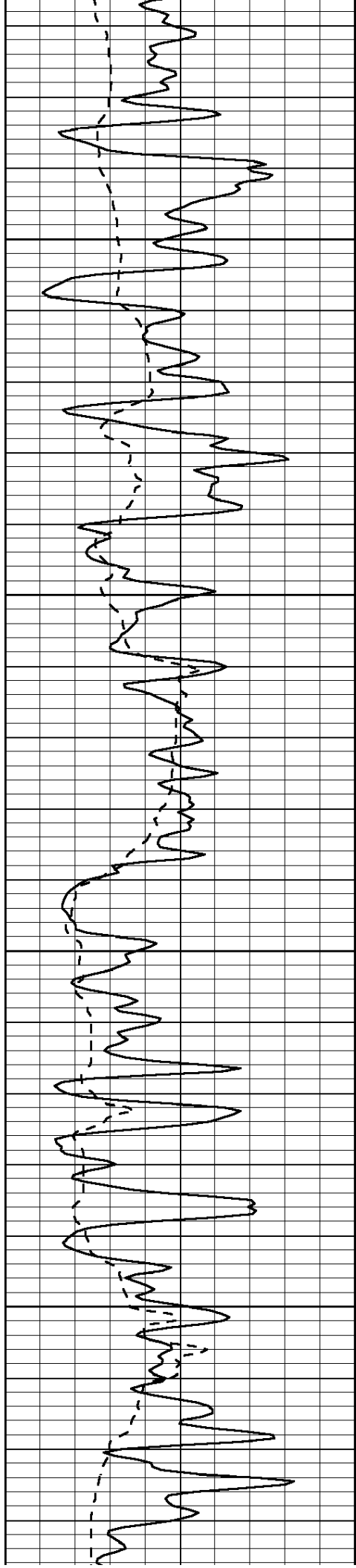


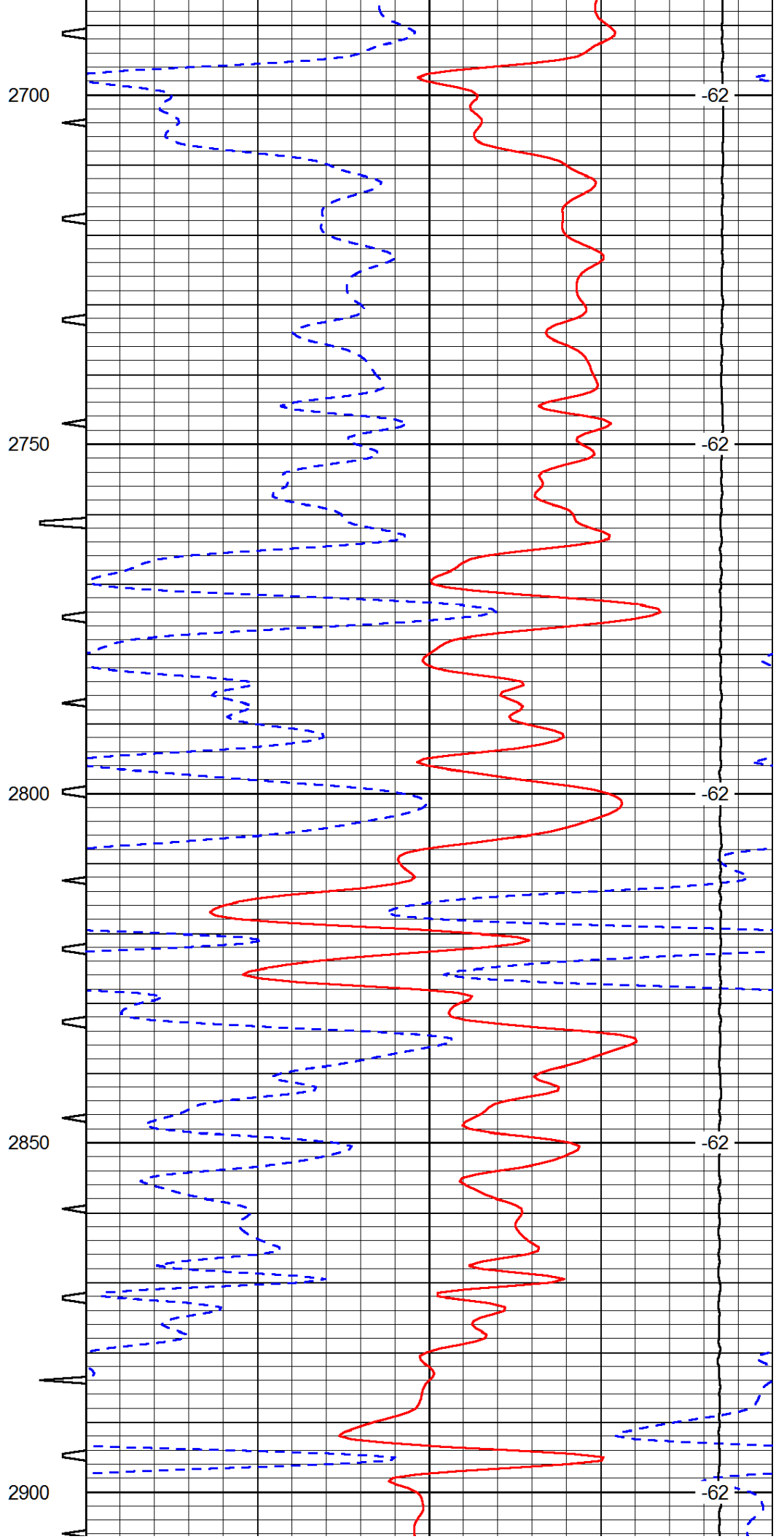
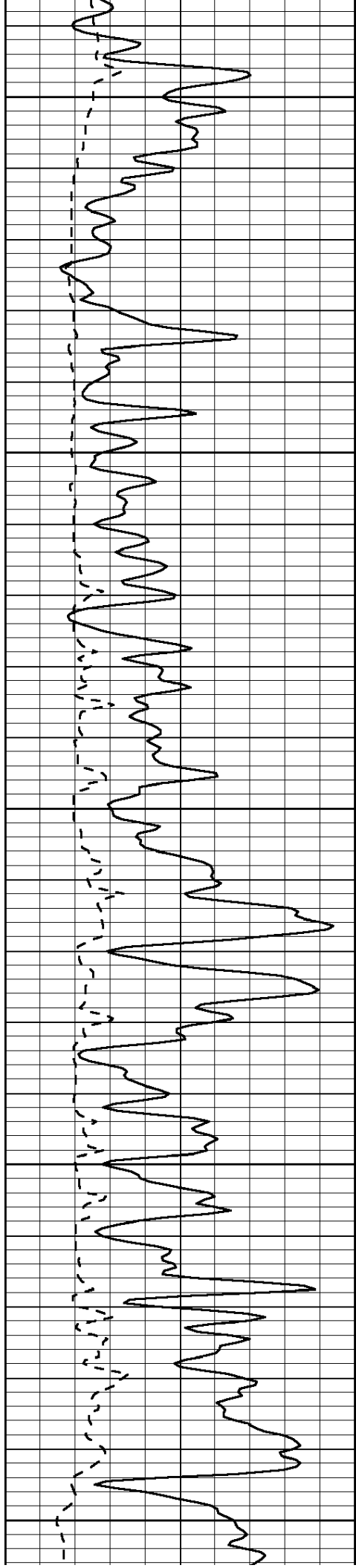


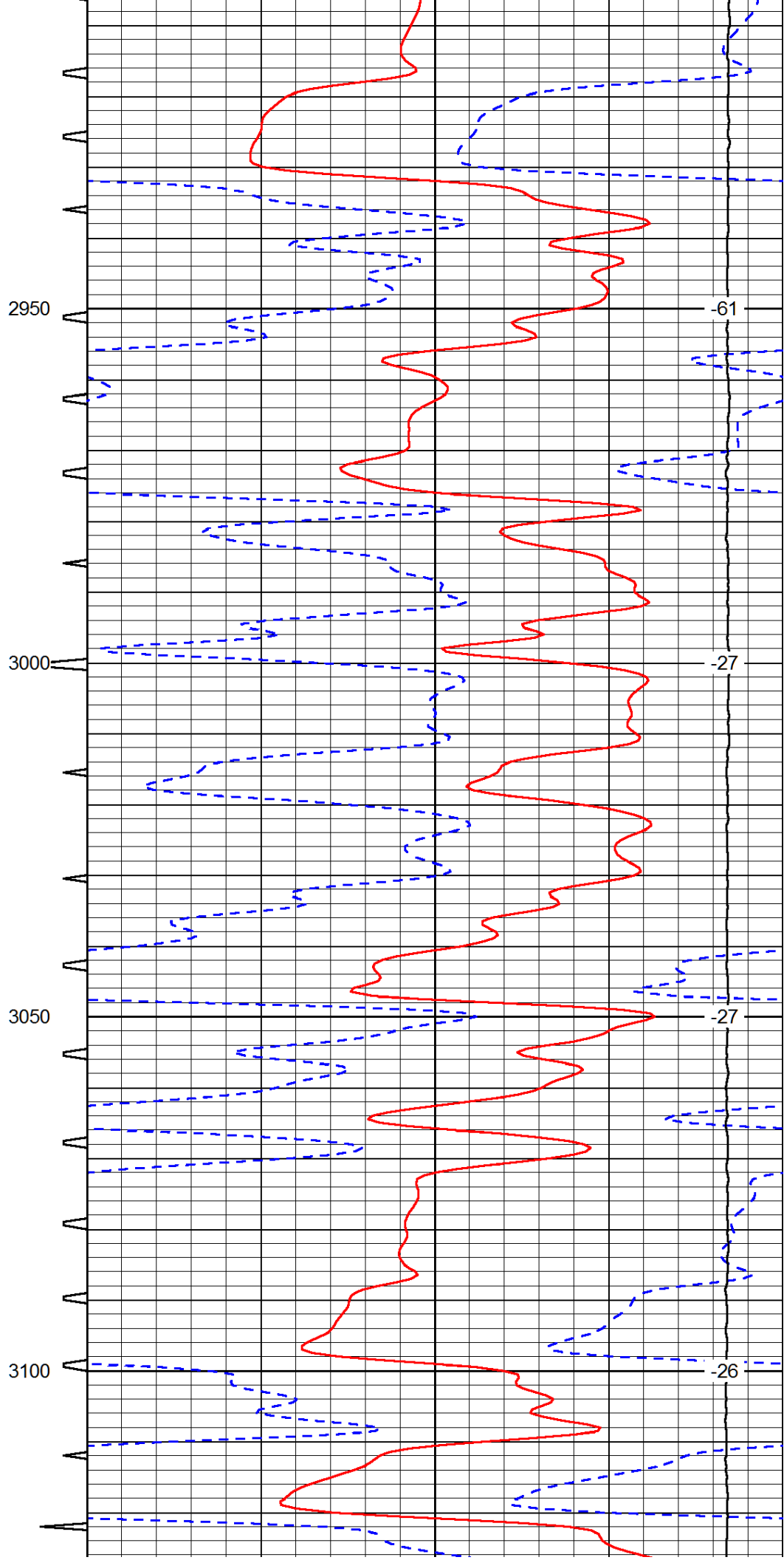
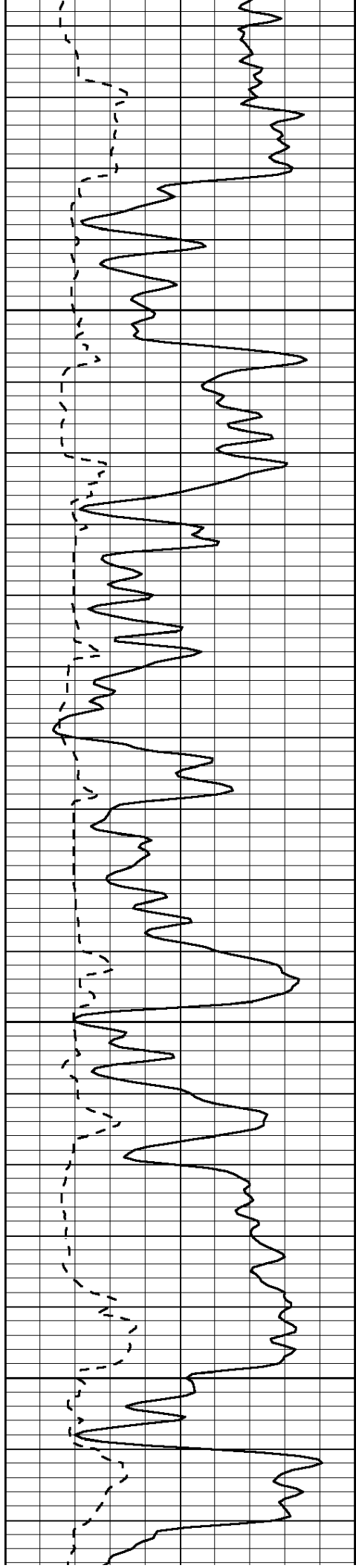


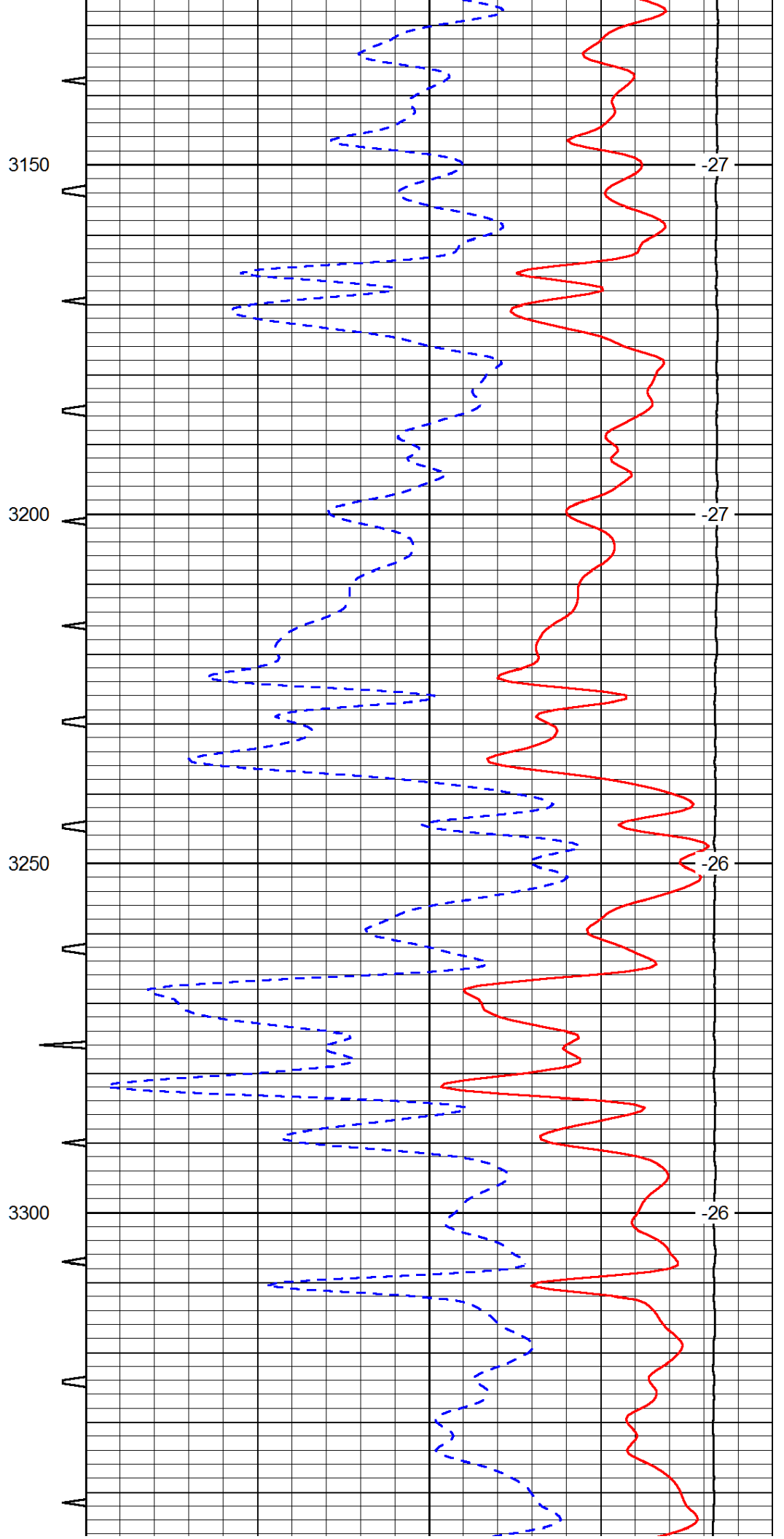
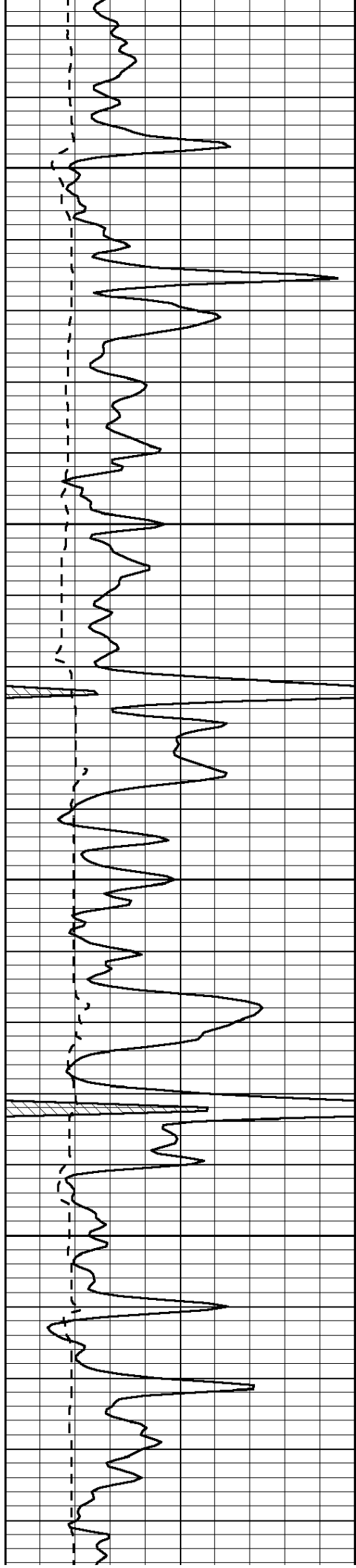


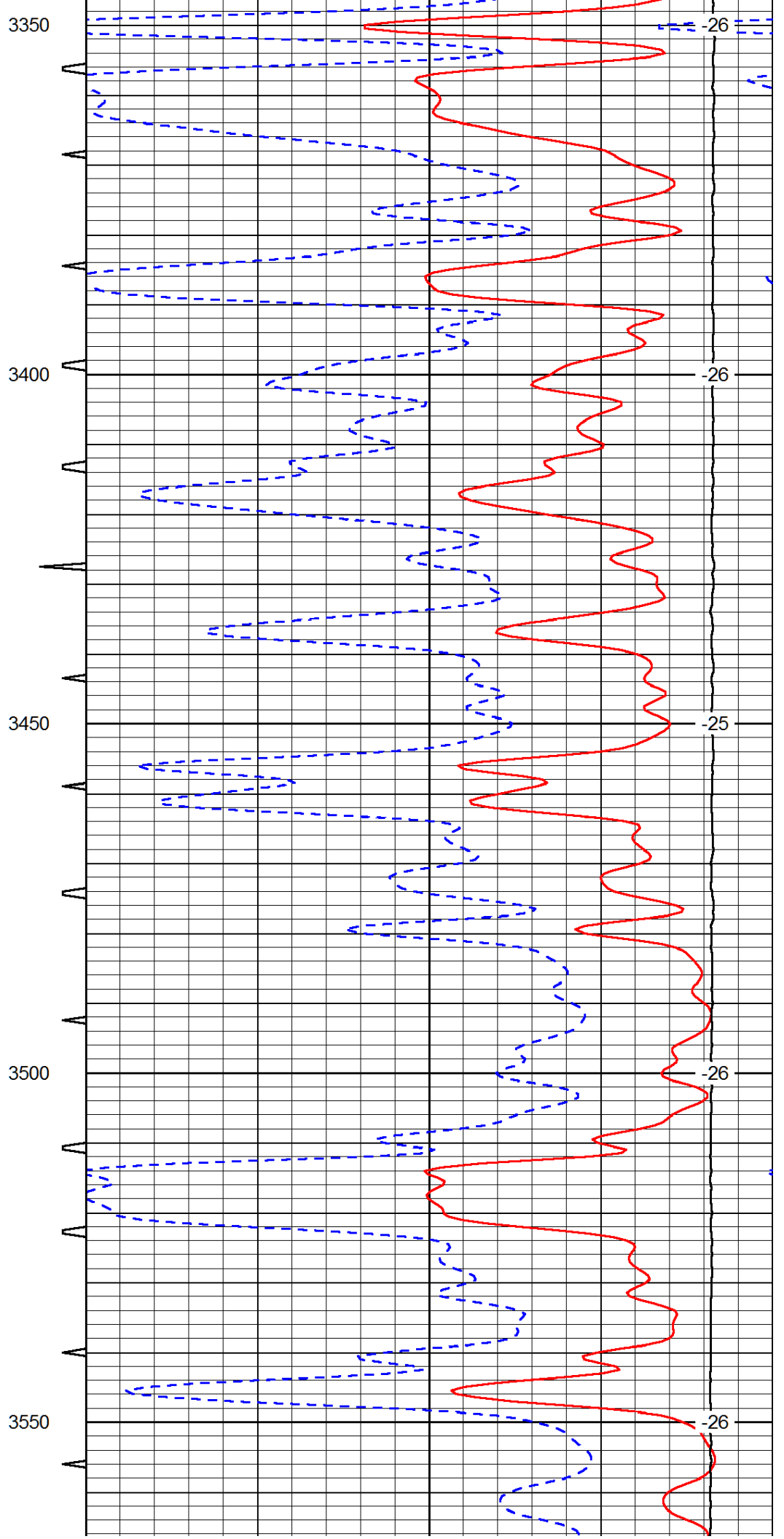
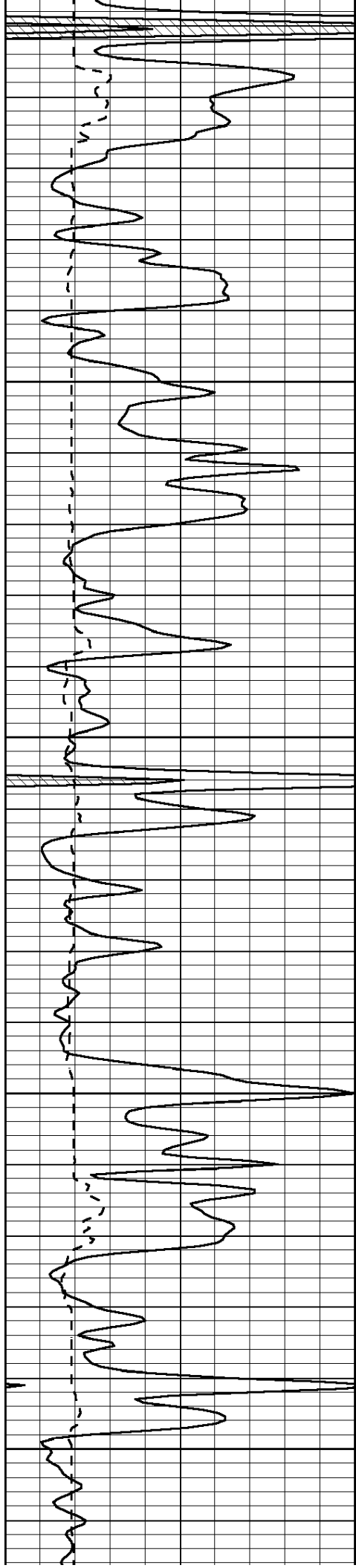




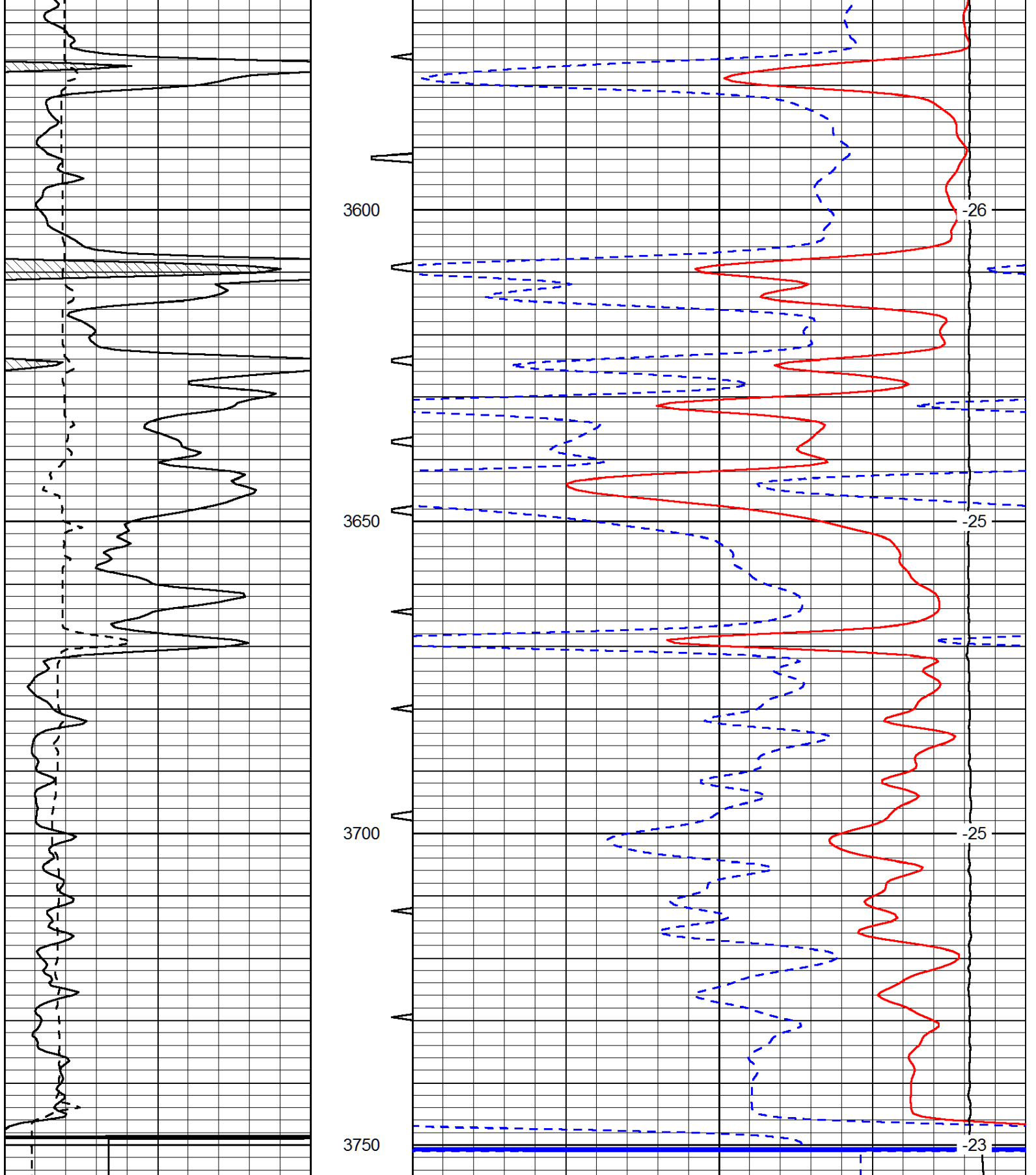












0	Gamma Ray (GAPI)	150	Sonic Int	140	Delta Time (usec/ft) (usec/ft)	40
150	Gamma Ray (GAPI)	300	5 (msec) 0	30	Sonic Porosity (pu)	-10
6	scal (in)	16		15000	LTEN (lb) (lb)	0
						LSPD (ft/min)